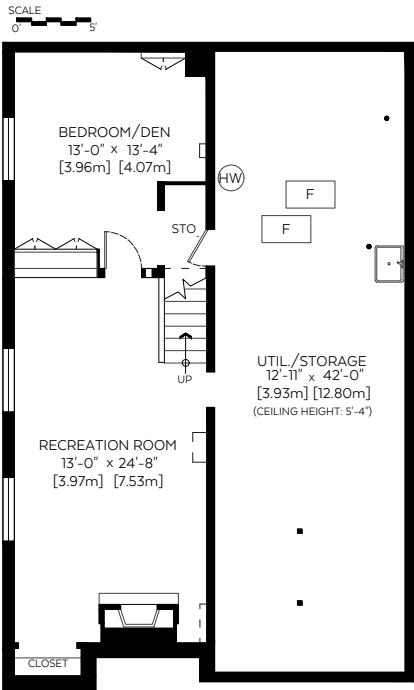
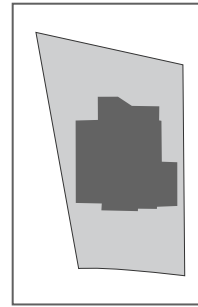


360 Lake Bonavista Drive SE, Calgary, A.B.

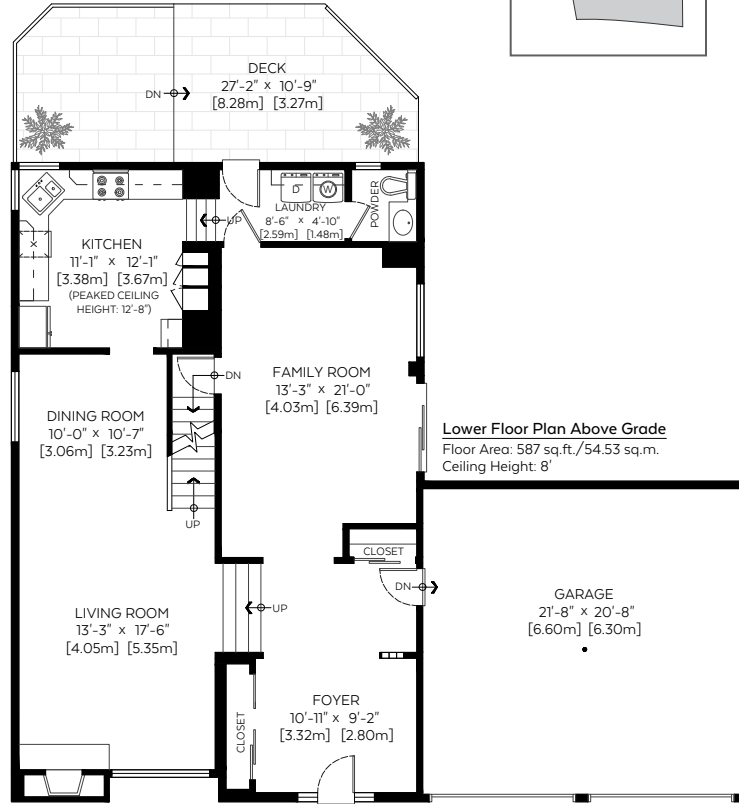
Main Floor:	593 sq.ft.	55.09 sq.m.
Upper Floor:	808 sq.ft.	75.07 sq.m.
Lower Floor:	587 sq.ft.	54.53 sq.m.
<b>RMS Total (Above Grd.):</b>	<b>1,988 sq.ft.</b>	<b>184.69 sq.m.</b>
Basement Floor (Below Grd.):	1,076 sq.ft.	99.96 sq.m.

**Auxiliary Area**

Garage:	447 sq.ft.	41.53 sq.m.
Deck:	264 sq.ft.	24.53 sq.m.
Sunrooms:	428 sq.ft.	39.76 sq.m.
Balconies:	304 sq.ft.	28.24 sq.m.

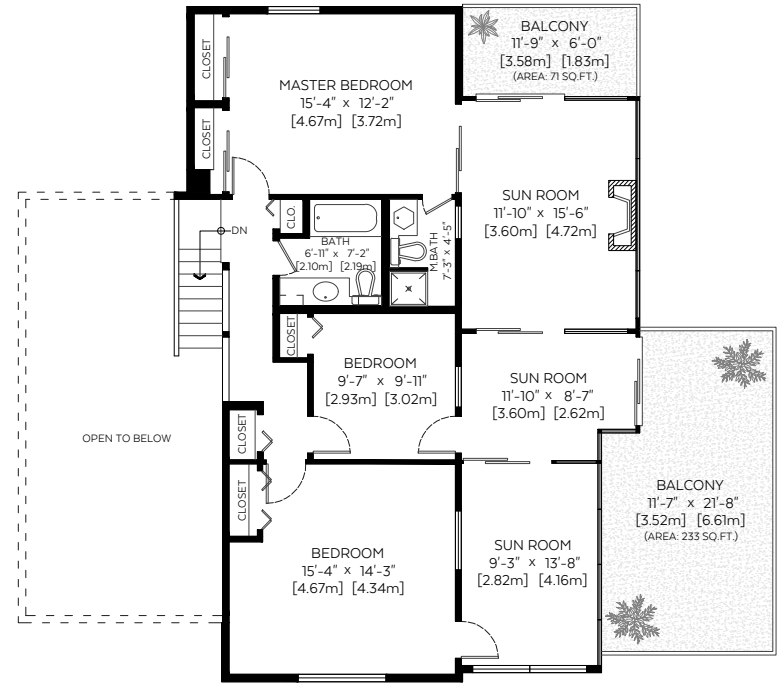


**Basement Floor Plan Below Grade**  
Floor Area: 1,076 sq.ft./99.96 sq.m.  
Ceiling Height: 7'-9"



**Main Floor Plan Above Grade**  
Floor Area: 593 sq.ft./55.09 sq.m.  
Peaked Ceiling Height: 13'-8"

**Lower Floor Plan Above Grade**  
Floor Area: 587 sq.ft./54.53 sq.m.  
Ceiling Height: 8'



**Upper Floor Plan Above Grade**  
Floor Area: 808 sq.ft./75.07 sq.m.  
Ceiling Height: 8'

Measured on: July 31, 2018

Measurements and Floorplans are certified, guaranteed and insured.

The floor plan is not suitable for architectural/construction, square footage-method RMS standards used & is covered under E.O. © Excelsior Measuring Inc. 2018. All rights reserved for Excelsior Measuring Inc. Users shall not publish and distribute such material (in whole or in part) and/or incorporate it in other works in any form.

\*Exterior wall thickness extrapolated from thickness of exterior door and/or window casings in accordance with RMS principle 3.  
\*Below Grade area calculated using interior perimeter walls (paint to paint).



**NORTH**