

Integrating Climate FieldView with ProfitLayers®

Ag-Analytics

www.analytics.ag

Visit <https://analytics.ag/Climate> to link your Climate FieldView account, then sign up for a free Ag-Analytics account.

Connection Instructions

A: Step 1 –Integrate Automatically by Linking Your Climate FieldView Account

To link your Ag-Analytics account with Climate FieldView, visit <https://analytics.ag/climate>.

The screenshot shows the ProfitLayers 4 Climate integration page. At the top, there is a navigation bar with links for HOME, CONNECT PRECISION AG, and FAQ. Below the navigation bar is a banner image showing a combine harvester in a field. The main content area features the Climate FieldView logo and a section titled "Connection with Ag-Analytics®". This section includes four bullet points: 1) Connect your Climate FieldView™ account with Ag-Analytics® to automatically pull in your boundaries, grower(s), farms, and fields for use with Ag-Analytics® tools and services. 2) Try out ProfitLayers® 4 Climate 30 Days Free - Create Custom Profit Maps and Analytics from Your Precision Ag Data. 3) Easily Connect your FieldView™ Account in Less than a Minute. 4) Only \$0.01/Acre per Month thereafter, Cancel Anytime. To the right of the text is a laptop displaying a profit map. Below the laptop is the text "Introducing ProfitLayers® 4 Climate". At the bottom of the page is a "CONNECT NOW" section with a sub-header "Please read and agree to the Terms of Use & Privacy Policy to connect your Climate FieldView™ account." This section contains a "TERMS OF USE" dropdown menu, a checkbox labeled "I have read and agree to the Terms of Use & Privacy Policy", and a yellow "CONNECT TO CLIMATE FIELDVIEW™" button.

Make sure to review Ag-Analytics' Term of Use and Privacy Policy. When ready, verify that you have read and agreed to the Terms of Use and Privacy Policy by clicking the gray check box, then click the CONNECT TO CLIMATE FIELDVIEW button.

CONNECT NOW

Please read and agree to the Terms of Use & Privacy Policy to connect your Climate FieldView™ account.

TERMS OF USE

Privacy and Data Use Policy: Your privacy and data security are important to us.


Terms and Conditions



I have read and agree to the [Terms of Use & Privacy Policy](#)

CONNECT TO CLIMATE FIELDVIEW™

You will be redirected to a login page for Climate FieldView. Log in with your Climate FieldView account.

 Log in with FieldView

Log In

Username

Password

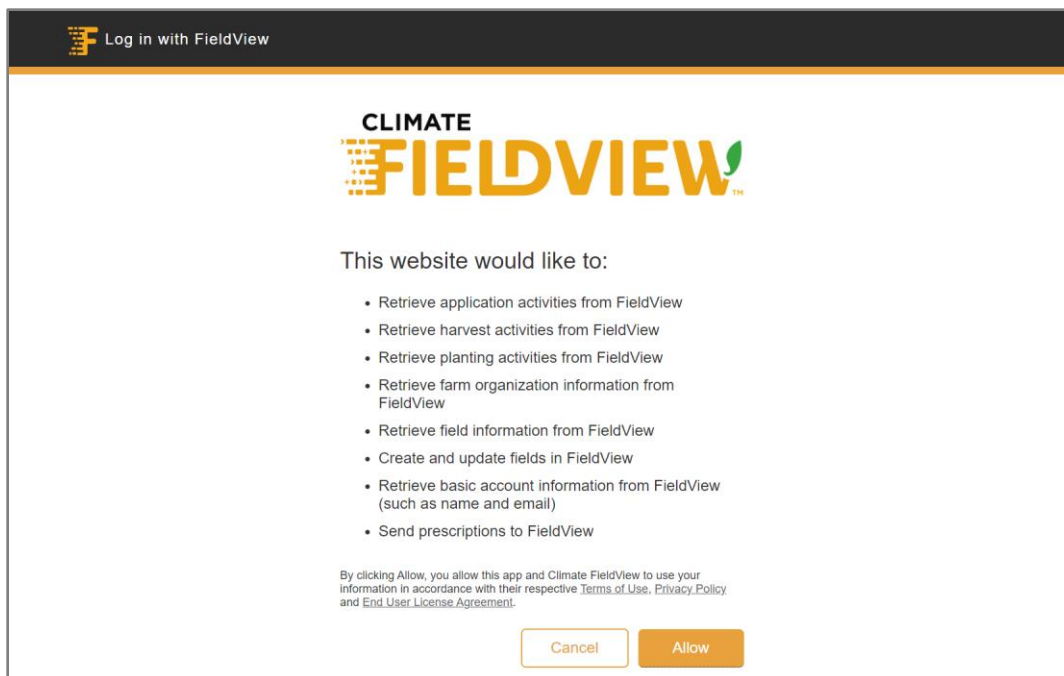
[Log In](#)

[Forgot Password?](#)

[Don't have an account?](#)

[Create Account](#)

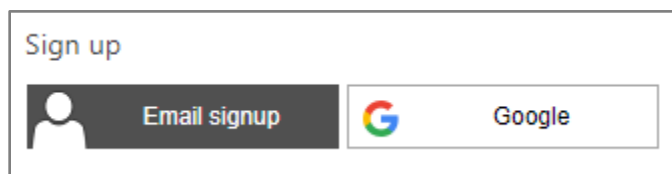
Allow permissions between Ag-Analytics and Climate FieldView to confirm the integration.




Once connected to your Climate FieldView account, your field boundaries and precision ag data will be integrated into Ag-Analytics. The integration process is a one-time operation.

B: Step 2 – Create Your Ag-Analytics Account

Next, create a free Ag-Analytics account to access ProfitLayers and other tools. After allowing permissions on the previous step, you will be prompted to create your personal Ag-Analytics account. Select “Email signup,” or “Google” to sign up with a Google account.



Enter your information to create a new account, or click “Sign in” if you have an existing Ag-Analytics account.



Ag-Analytics

Already existing user?

Sign up with a new account

Email Address

New Password

Confirm New Password

Given Name

Last Name

City

State/Province

Country/Region

C: Step 3 – Log In and Get Started with ProfitLayers

Log in to your Ag-Analytics account by clicking the Login button in the top right corner. Once your precision data is integrated and ready, visit <https://analytics.ag/farmscope/profitlayers> to get started with ProfitLayers.



TERMS OF USE

Privacy and Data Use Policy: Your privacy and data security are important to us.

Terms and Conditions
Last updated: June 04, 2019

New user?

Signup

Sign in with your existing account

Google+

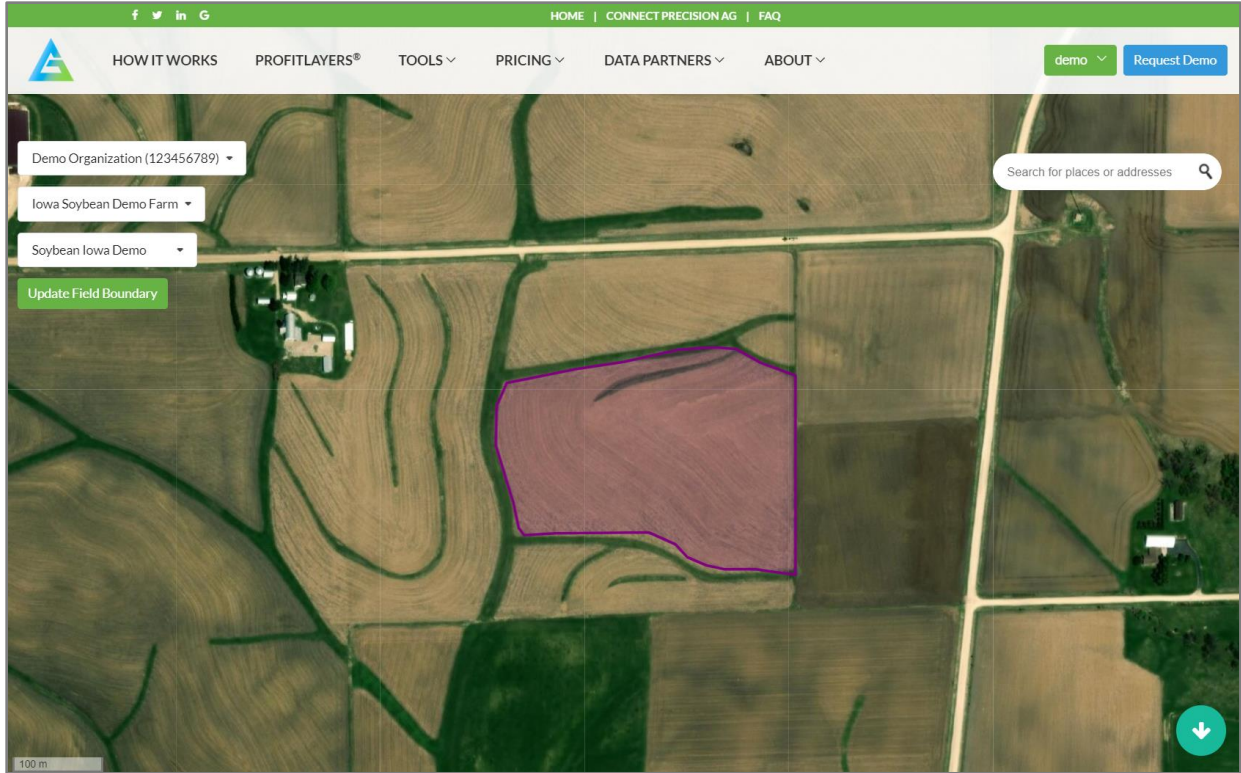
or

Email Address

Password

[Forgot your password?](#)

Sign in



HOME | CONNECT PRECISION AG | FAQ

HOW IT WORKS PROFITLAYERS® TOOLS PRICING DATA PARTNERS ABOUT

demo Request Demo

PROFIT LAYERS

This tool combines harvest, seeding, tillage and application data across your field to estimate revenues and costs. You can expand the details of each calculation to fine-tune the estimates.

Take the ProfitLayers Tutorial

Organization: Demo Organization Farm: Iowa Soybean Demo Farm Field: Soybean Iowa Demo

[Reset Operations](#)
[Refresh Operations Data](#)
[Sync Precision-Ag Data](#)
[Learn More](#)

Show Values per Acre 2018

Total Profit: \$17.94/acre (Net Seeded) Net Seeded Area: 15.88 acre

Harvest Revenues +\$423.32/acre

Date	Crop	Variety	Organic	Irrigated	Acres	Yield per Acre	Price (\$)	Revenue (\$/acre)	Update Deere Data
11/14/2018	SOYBEANS	Dairyland 1526	<input type="checkbox"/>	<input type="checkbox"/>	2.49	56.28 bu	5 /bu	281.39	<input type="checkbox"/>
11/14/2018	SOYBEANS	Dairyland 1721	<input type="checkbox"/>	<input type="checkbox"/>	13.39	54.78 bu	8.21 /bu	449.72	<input type="checkbox"/>

[Save Prices](#)
[Add Operation](#)
[Add Harvests](#)

Seed Costs -\$36/acre