

# › Connecting Climate FieldView and Agvance



## How to Export Fields from Agvance Mapping and Import into Climate FieldView

### + Summary:

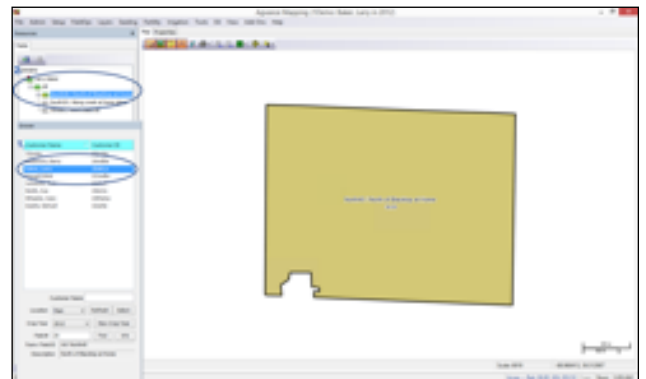
Users of Agvance's Mapping module can export Field Boundaries to a grower's Climate FieldView account. The grower can then import the fields into the Climate FieldView website. Imported Fields are then visible in Climate FieldView Prime/Plus/Pro supported mobile and web applications.

Farmers are using FieldView on more than **90 million acres** and leading every other non-equipment software provider in awareness, usage and acres.

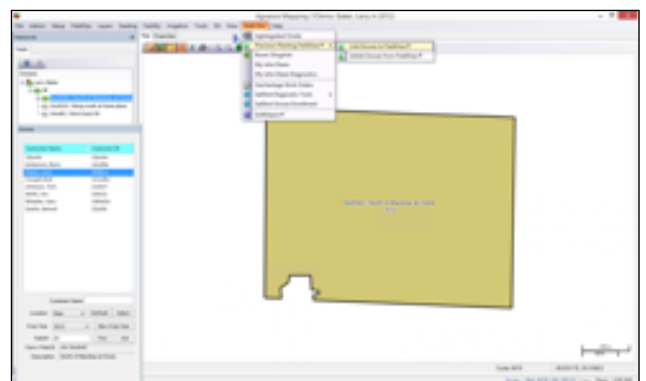
### + Step #1: Linking Agvance Mapping to a Grower's Climate FieldView Account

1. From the Grower panel select:
  - a. Company
  - b. Territory
  - c. Location
  - d. Grower

2. From the Resources tree select the Grower that you would like to link to Climate FieldView



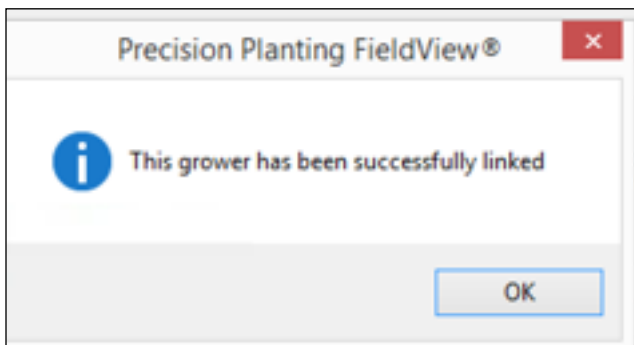
3. From the Add-Ons menu, select Precision Planting FieldView > Link Grower to FieldView



4. Enter Grower's Climate FieldView UserName into the Link Grower to FieldView dialog and select OK

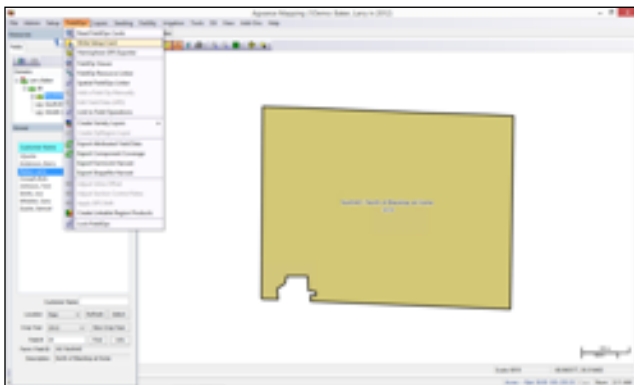


5. Confirmation message will be displayed "This grower has been successfully linked"



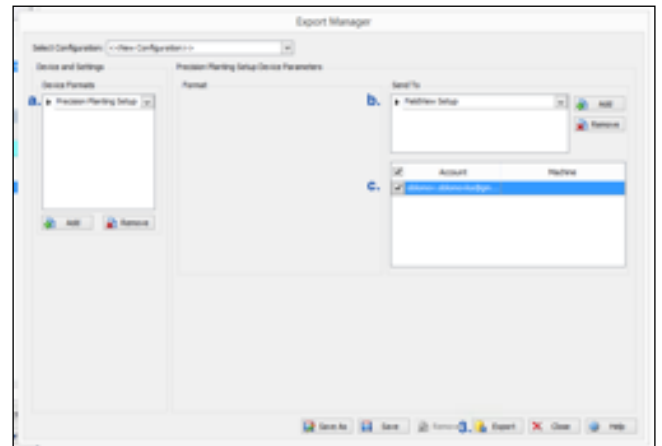
## + Step #2: Export Fields from Agvance Mapping

1. Select FieldOps > Write Setup Card from the menu bar

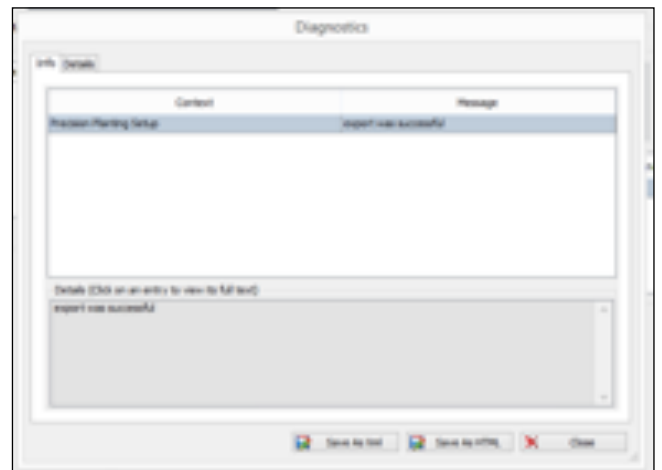


2. Configure the Export Manager
  - a. Set Device Formats to Precision Planting Setup
  - b. Set Send To to Climate FieldView Setup
  - c. Check Grower's Account

3. Select Export



4. Confirmation message will be displayed "Export was successful"



## + Step #3: Import fields into the Climate FieldView website

1. Login to [www.climate.com](http://www.climate.com) and (select Add/Edit Fields)
2. Click on the Data Inbox and select the field(s) you wish to import
3. Fields will imported automatically into your Climate FieldView Prime/Plus/Pro account
4. If you need assistance with this step, please contact Climate FieldView Support.