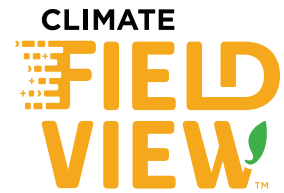


# » External Non-Satellite Imagery Steps



**For new TerrAvion customers:** Visit [www.terravion.com](http://www.terravion.com) to sign up for an account and link to your Climate FieldView™ account.

**For existing TerrAvion customers:** Log in to your TerrAvion Overview account and then use the **Log in with FieldView** button to connect to your Climate FieldView account.

**Step 1:** TerrAvion will provide NDVI, RGB, and Thermal for fields paid for by the farmer.

**Step 2:** Go to [terravion.com/climateterravion/](http://terravion.com/climateterravion/)

**Step 3:** Click the **LINK TERRAVION WITH CLIMATE** button.

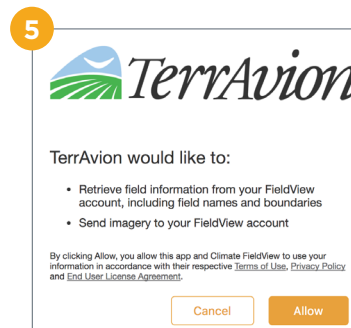
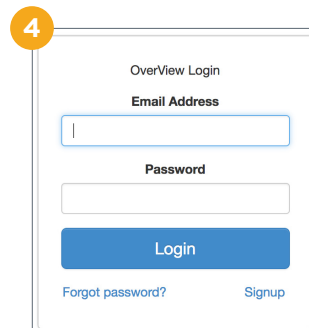
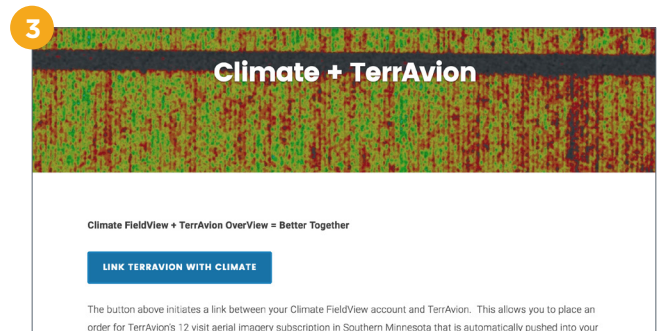
**Step 4:** Log in to your Climate FieldView account.

**Step 5:** You (the farmer) will be asked to allow TerrAvion to do the following:

- + Retrieve field information from your Climate FieldView account (including field names and boundaries), and
- + Send imagery to your Climate FieldView account.

**Step 6:** Make sure to review The Climate Corporation's "Terms of Use", "Privacy Policy", and "End User License Agreement" before you click the **Allow** button.

**Step 7:** This will retrieve field information from your Climate FieldView account, including field names and boundaries.



## » External Non-Satellite Imagery Steps — TerrAvion

**Step 8:** The farmer has to place an order for imagery by providing additional relevant information as shown in the screenshot to the right. You have to place an order only if you have no existing imagery orders with TerrAvion (new customers).

**Step 9:** The farmer can then place an order for the imported farms and fields.

**Step 10:** After the flights have been taken, imagery will be delivered into the farmer's Climate FieldView™ account. When new images arrive, the email address for the Climate FieldView account will get an email notification, if the delivery preference for imagery updates by email has been turned on. Field assignment and confirmation of images is done through the Imagery tab of the Data Inbox.

**Step 11:** The images are available on the Climate FieldView app under Fields and within the Script Creator Map Overlay section of climate.com. They are also available on the Climate FieldView™ Cab app for Climate FieldView™ Pro and Climate FieldView™ Plus users.

8

Order Id:  
7c8cfd0d-dc4f-4164-8e43-2fe9b704806e

Total acres: 0

Total cost: 0

Checkout

Customer

Add a customer

Distributor

Climate Corp

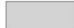
Farms and Fields

0 farms, 0 fields, 0 acres

Subscription Details

Click Checkout to complete your order

10

Fields   Soil Tests   Planting   Harvest   Imagery (1)					
Edit All		Client   Farm   Year			
	IMAGE	FILE NAME	SOURCE	ACTION	FIELD ASSIGNMENT
Your image overlaps with Test Field 1 by 51%, and Test Field 2 by 8%. Please confirm field assignment before importing.					
<input type="checkbox"/>		RGB	non-satellite-image	Import data into existing field	Test Field 1

## » External Non-Satellite Imagery Steps — TerrAvion

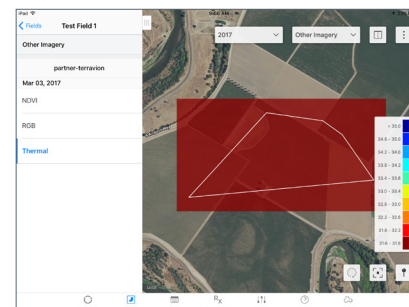
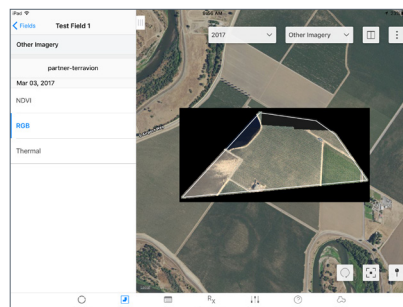
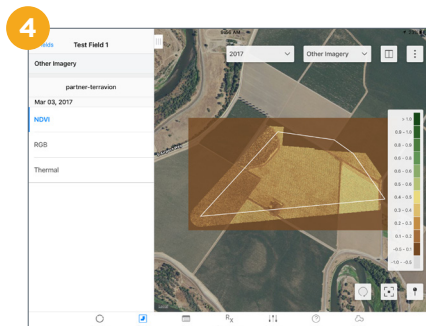
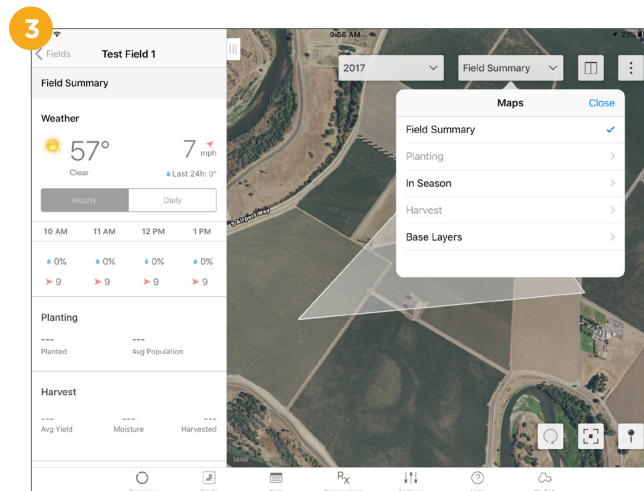
### View Map layers in Fields on the Climate FieldView™ app (iOS only)

**Step 1:** Log in to the Climate FieldView™ app by using the same email address and password that was used to order imagery from the TerrAvion website.

**Step 2:** Navigate to Fields and make sure you (the farmer) are in the right operation for the fields for which the farmer ordered the imagery.

**Step 3:** Tap on the field, then **Field Summary** > **In Season** > **Other Imagery**.

**Step 4:** It will show the partner as “TerrAvion” and the different types of images available under that partner as shown below. Imagery will be grouped by the date the images were taken.



**For questions, please contact Climate Support at 1.888.924.7475 or [support@climate.com](mailto:support@climate.com).**

Our services provide estimates or recommendations based on models. These do not guarantee results. Consult your agronomist, commodities broker and other service professionals before making financial, risk management, and farming decisions. Information and recommendations we provide do not modify your rights under insurance policies purchased through our affiliates. More information at <http://www.climate.com/disclaimers>. All trademarks are the property of their respective owners. Climate FieldView™ is a trademark of The Climate Corporation. ©2017 The Climate Corporation. All Rights Reserved.