

FluroSense®

Integration Guide

CLIMATE
FIELDVIEW™



FluroSat

Getting started

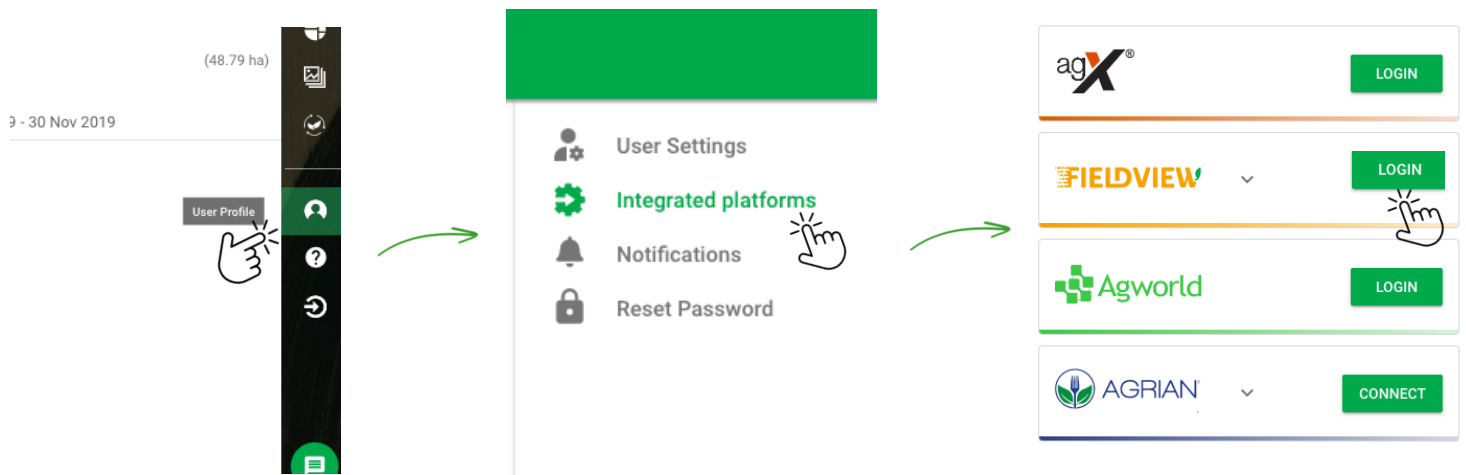
Connect your Climate FieldView account with FluroSense in just a few easy steps. Once the integration is complete you gain proactive insights at the click of a button.

Step 1: Login

- Go to <https://flurosense.com/app/login>
- Enter your username and password for your FluroSense Account

Step 2: Connect Accounts

- Select the "user profile" tab on the toolbar on the right
- Select "Integrated Platforms."
- Select "Login" beside Climate FieldView




- Follow the prompt to log in with your Climate FieldView Credentials
- Make sure you select the "Allow" button

Log In

Username _____

Password _____

Log In 

Forgot Password?

Don't have an account?

Create Account



This website would like to:

- Retrieve application activities from FieldView
- Retrieve harvest activities from FieldView
- Retrieve planting activities from FieldView
- Retrieve farm organization information from FieldView
- Retrieve field information from FieldView
- Create and update fields in FieldView
- Retrieve operation information from FieldView
- Retrieve basic account information from FieldView (such as name and email)
- Retrieve scouting information from FieldView

By clicking Allow, you allow this app and Climate FieldView to use your information in accordance with their respective Terms of Use, Privacy Policy and End User License Agreement.

Cancel Allow 

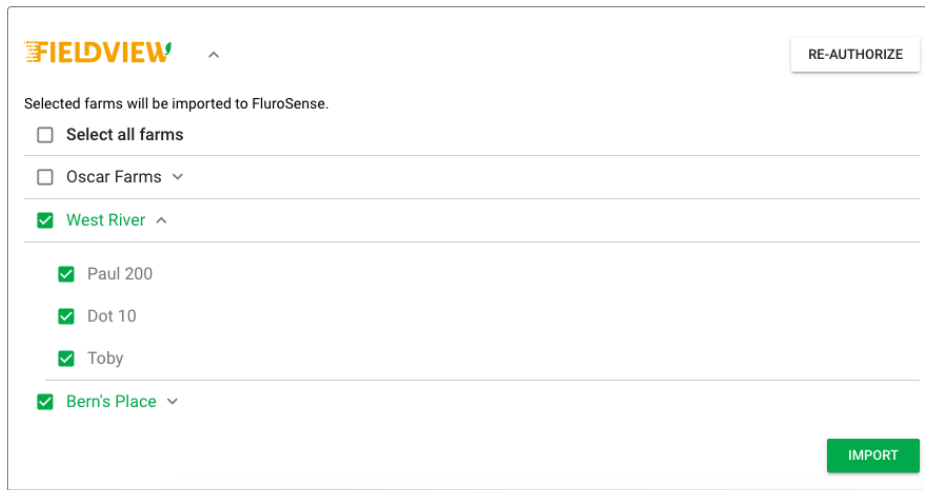
Getting started continued...

Just a few more steps to go and you will be all set!



Step 3: Import Farms & Fields

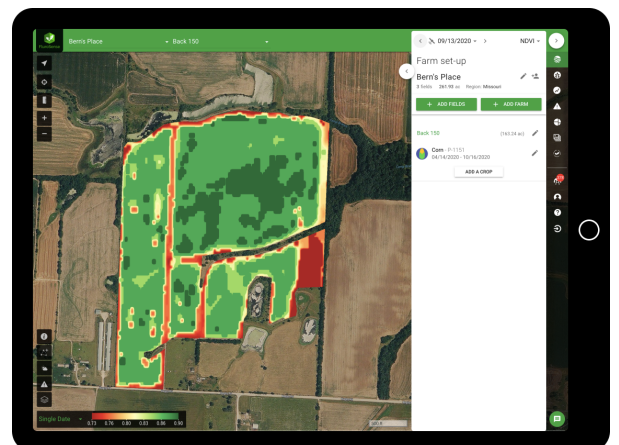
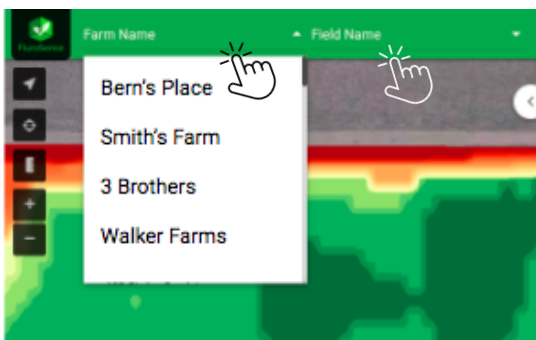
- Once you select "Allow" you will be directed back to the "User Tab" on the FluroSense Platform
- Click the drop down arrow and choose the farms and fields that you want to sync to your FluroSense Account. Click "Import." This will migrate over selected farms, fields and as-planted data from FieldView. This step may take several minutes.



Note: The selected farms and fields will now automatically sync to FluroSense. If you have a new farm or field you want to sync you will have to click the "Refresh" button in the "user" tab and follow the prompts to sync a new account.

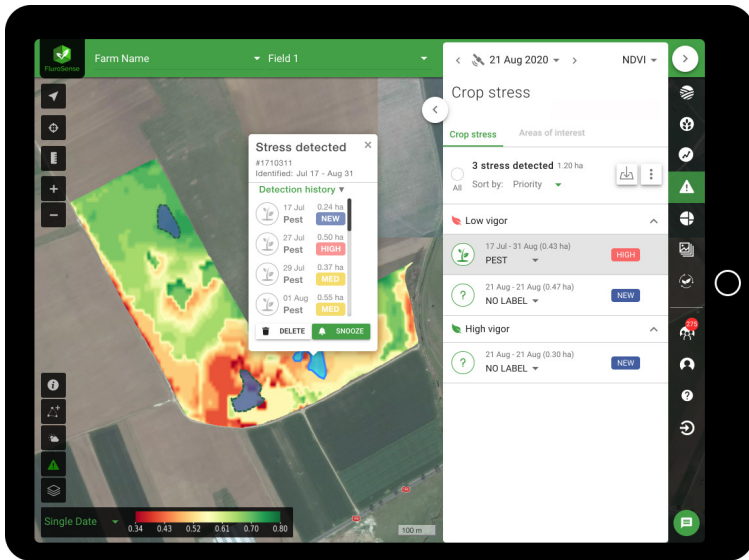
Step 4: Gain Insights

- Once all of the data has migrated over, navigate to the farm and field drop down to select farms and fields.
- View at the field or farm level and gain insights to make data based management decisions!



[Click here to watch a step-by-step Integration Video.](#)

The Power of FluroSense Insights

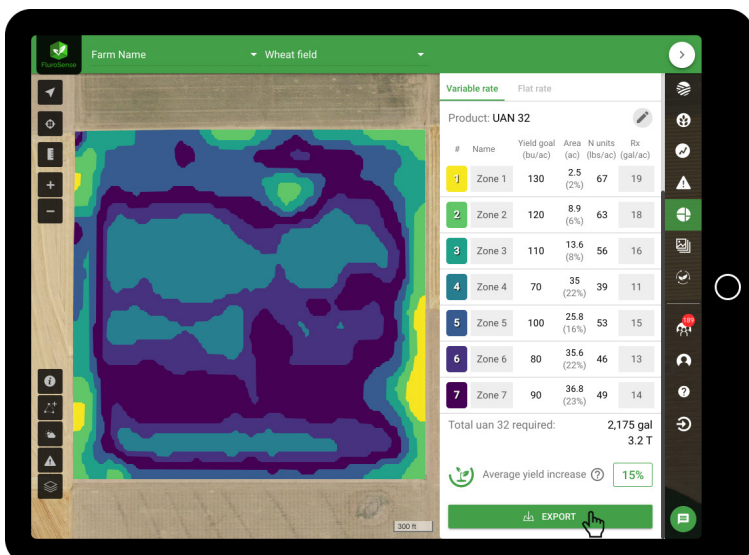
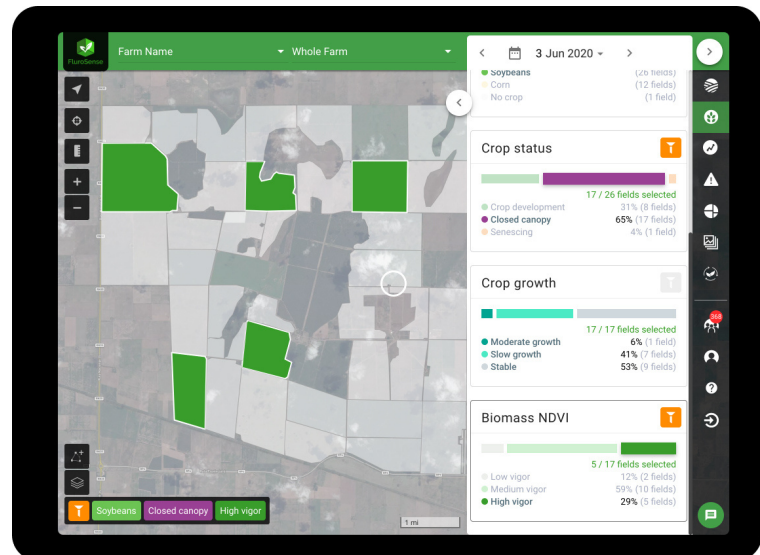


Detect Crop stress areas

- Proactive email alerts with early crop stress detection to prevent yield loss.
- Customizable stress tracking areas so you know when to take action.

Optimize crop management decisions

- Identify high and low performing fields by crop type to inform management decisions.
- Use customized reports to perfectly time spraying, nitrogen application and harvest.



Export machinery ready N Rx

- Get site-specific Variable Rate Nitrogen recommendations with minimal data entry.
- Adjust recommended application rates with farm-specific environmental and financial factors in real-time.

Integrate Climate FieldView to unlock FluroSense Insights.

About FluroSat

FluroSat is a crop health solutions provider that uses the power of scientific modeling, AI and remotely sensed data to deliver early, accurate and actionable information on farm performance and plant nutrition to agronomists and farmers.

Email: support@flurosat.com

Login: <https://flurosense.com>

