



**COUGAR
MOUNTAIN
SOFTWARE**

DENALI

IMPORTING QUICKBOOKS® DATA

Use this guide to help you convert from
QuickBooks to Denali

Microsoft®
GOLD CERTIFIED
Partner

DENALI

Importing QuickBooks® Data



Copyright Notification

At Cougar Mountain Software, Inc., we strive to produce high-quality software at reasonable prices. We can only do this, however, if our rights as developers are respected. Even though we provide exceptional software at low prices, we do not consent to unlicensed use of our software or documentation.

Information contained in this document represents the current view of Cougar Mountain Software on the issues discussed as of the date of publication. Because Cougar Mountain Software must respond to changing market conditions, it should not be interpreted to be a commitment on the part of Cougar Mountain Software, and Cougar Mountain Software cannot guarantee the accuracy of any information presented after the date of publication.

This documentation is for informational purposes only and is not a qualified accounting reference. COUGAR MOUNTAIN SOFTWARE MAKES NO WARRANTIES, EXPRESS OR IMPLIED, AS TO THE INFORMATION IN THIS DOCUMENT. It is the user's responsibility to review the latest publication releases from Cougar Mountain Software. The example companies, organizations, products, people, and events depicted herein are fictitious. No association with any real company, organization, product, person, or event is intended or should be inferred.

Complying with all applicable copyright laws is the responsibility of the user. Without limiting the rights under copyright, no part of this document may be reproduced, stored in or introduced into a retrieval system, or transmitted in any form or by any means (electronic, mechanical, photocopying, recording, or otherwise), or for any purpose, without the express written permission of Cougar Mountain Software.

Cougar Mountain Software may have patents, patent applications, trademarks, copyrights, or other intellectual property rights covering subject matter in this document. Except as expressly provided in any written license agreement from Cougar Mountain Software, the furnishing of this document does not give you any license to these patents, trademarks, copyrights, or other intellectual property.

QuickBooks is a trademark of Intuit Inc., registered in the United States and other countries.

Recognized Trademarks. Microsoft, Windows, Windows 7, Windows 8, and Windows 10 are registered trademarks of Microsoft Corporation. Other brands or products are the trademarks or registered trademarks of their respective holders and should be treated as such.

© 2017 Cougar Mountain Software

All Rights Reserved

UGPDF00013 092517

Importing QuickBooks® Data Into Denali 1

Before Importing QuickBooks® Data Into Denali..... 2

Importing QuickBooks® Data Into Denali 2

Setting Up Denali After the Import..... 5

Minimum Setup for Each Module7

 Accounts Payable7

 Accounts Receivable.....7

 Controller.....7

 General Ledger7

 Inventory8

 Payroll8

 Sales8

QuickBooks® Import File Requirements 9

Accounts Payable 10

Accounts Receivable 10

General Ledger11

Inventory 14

Payroll 15

Sales 18

Chapter

1

Importing QuickBooks® Data Into Denali

Before Importing QuickBooks® Data Into Denali

Importing QuickBooks® Data Into Denali

Setting Up Denali After the Import

DENALI

Use the information in this chapter to import your QuickBooks® data and to start setting up Denali after the import is complete.

Before Importing QuickBooks® Data Into Denali

Before you can import your QuickBooks data into Denali, you must export it to an Excel® file. In QuickBooks, use the Report Lists to create an Excel file of the data you want to import. You can import master account information, such as ledger accounts, customers, inventory, employees, and vendors, as well as ledger and sales transaction history.

If you will be importing General Ledger transaction history, you need to include all accounts in your General Ledger accounts export, including inactive accounts. To import transaction history, you must export the Transaction Detail by Account report from QuickBooks. If you will be importing Sales transaction history, you need to export the Sales by Item Detail report. For both of these, your **Reports and Graphs Company Preferences** must be set to **Name only** in the **Reports - Show Accounts By** section or you will not be able to import transaction history.

You might need to customize the QuickBooks export to include the fields you want to import. See your QuickBooks instructions for information on how to do this.

Before you start the import process, you must have the Demonstration company or another organization installed in Denali. Please contact our Customer Support team at (800) 390-7053 if you have any questions about this. You can also access the installation guides found on our Customer Service Center website to help you.

You must have Excel installed on your system to import QuickBooks files into Denali.

For details of which fields Denali will import, how the export file will convert to Denali, and the fields required for a successful import, see “QuickBooks® Import File Requirements” on page 9.

To begin your organization setup:

- 1 Open the Denali Controller module from your desktop.
- 2 Click on the Demonstration company or another organization that is installed and click **Select**.
- 3 In the **CMS Login** window that appears, enter your user ID and password.
- 4 Select **OK**.

This will log you into a Denali organization from which you can import your QuickBooks data.

See “Importing QuickBooks® Data Into Denali” on page 2 for the next steps in the import process.

Importing QuickBooks® Data Into Denali

After you export your QuickBooks data and make sure it meets the Denali import requirements (see “QuickBooks® Import File Requirements” on page 9), you can begin the import process.

To import your QuickBooks data into Denali:

- 1 Now that you are logged into a Denali organization, select **Company Options > Define Company Information** from the left navigation pane.
The **Set Up/Select Organization** window will open.

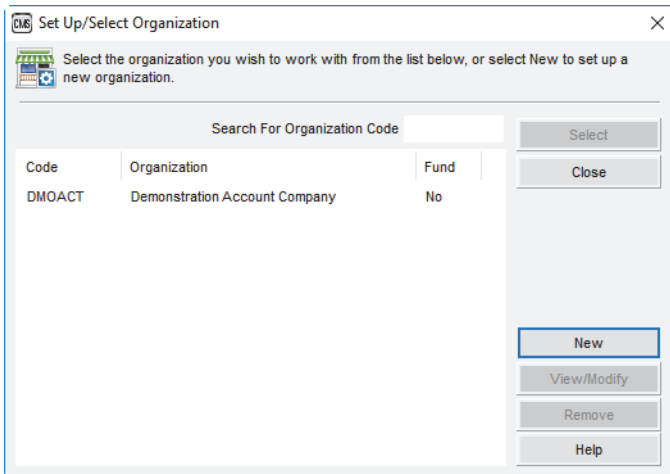


Figure 1: *Set Up/Select Organization window*

- 2 In the **Set Up/Select Organization** window, click **New**.
The **CMS Select Accounting Type** window appears.
- 3 From the radio buttons in the **CMS Select Accounting Type** window choose if you want to create a Fund or Non-Fund organization type.
After you select **OK**, the **Create Denali Organization** window appears.

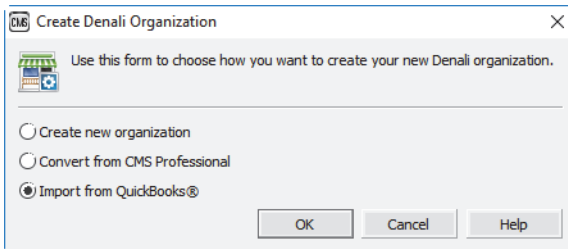


Figure 2: *Create Denali Organization window*

- 4 In the **Create Denali Organization** window, select the **Import from QuickBooks®** radio button.
- 5 Select **OK**.
The **Import Files from QuickBooks** window will open. This will import your master files, such as ledger accounts, customers, and vendors.

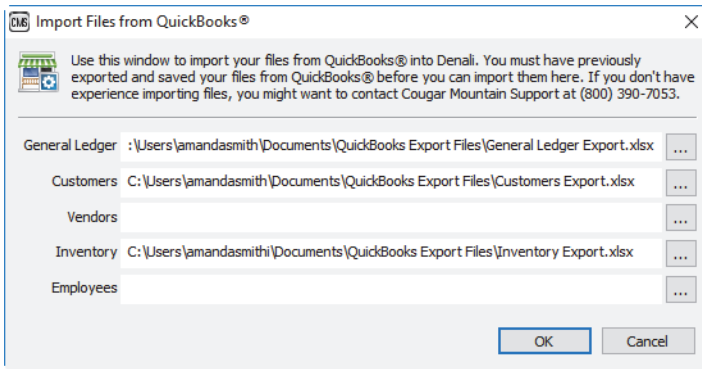


Figure 3: *Import Files from QuickBooks® window*

- 6 For each Excel file you want to import, click the browse button to the right of the field and navigate to the folder where the QuickBooks export file is stored.
- 7 After you select all the QuickBooks files you want to import, select **OK**.

If there are any errors in your import file, a report will appear showing you what the errors are. You will need to correct these errors before you can continue with the Denali import.

This report might also show you warnings. These are issues that Denali will import and you can choose to address them either in your import file or once the data is in Denali.

After you address any issues in the error report, the **Import Transactional History Files from Quickbooks®** window opens.

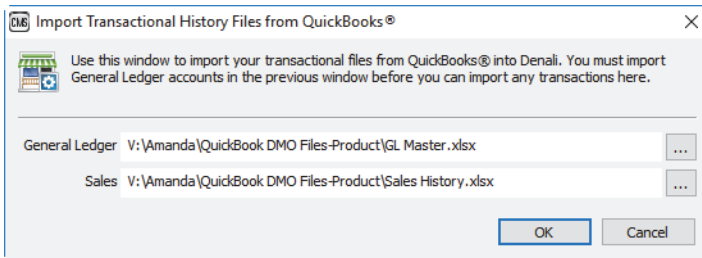


Figure 4: *Import Transactional History from QuickBooks window*

- 8 If you want to import transaction history files for General Ledger or Sales, click the browse button to the right of the field and navigate to the folder where the QuickBooks export file is stored. To import these transaction history files, you must have imported General Ledger accounts in the previous window. If you want to import Sales transactions, you must also import General Ledger transactions.
- 9 Click **OK** to import the data.

If there are any errors in your import file, a report will appear showing you what the errors are. You will need to correct these errors before you can continue with the Denali import.

This report might also show you warnings. These are issues that Denali will import and you can choose to address them either in your import file or once the data is in Denali.

For information about setting up Denali after the import is complete, see “Setting Up Denali After the Import” on page 5.

Setting Up Denali After the Import

To finish your new organization setup process, Denali guides you through a few windows in the Controller module.

If you have questions about any of these windows, you can access help from within Denali by clicking the **Help** button in the software windows or selecting **Help > Contents** from the menu bar. We also offer web help, which you can access at <https://cougarmtnservice.com/help>, and PDFs, which you can access from the Documentation section of the Customer Service Center at <https://cougarmtnservice.com/documentation>. You can also contact Customer Support at (800) 390-7053.

Follow these steps to complete your organization setup:

- 1 In the **CMS Organization Information** window, enter your general information on the **Organization Detail** tab.

Use this window to input information about your organization.

Organization Name ABC Organization
Abbreviation ABCORG This code is used in setting up your organization files and must be unique.

Billing Information
Addr Line1 2525 S. Main St.
Addr Line 2
City Boise State ID
Postal Code 83702 Country United States
Telephone (208) 555-5555 Ext.
FAX
Contact Jane Smith
E-mail JSmith@email.com

Shipping Information
2525 S. Main St.
Boise ID
83702 United States

OK Cancel Help

Figure 5: CMS Organization Information window

- 2 Select **OK**.
After your organization is created in the database, the **CMS Install Modules** window will appear.

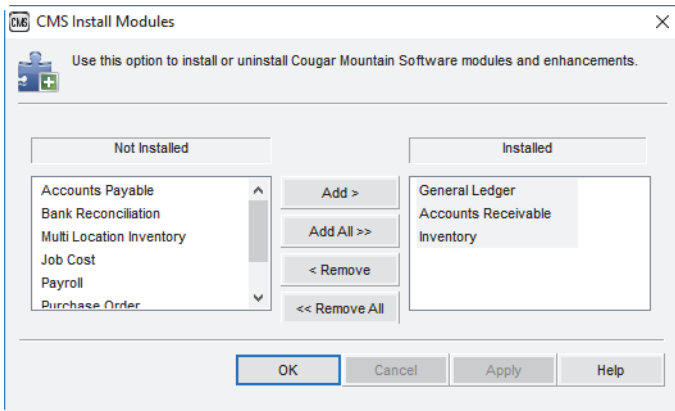


Figure 6: CMS Install Modules window

- 3 Any modules for which you imported data from QuickBooks will be in the **Installed** column. Add any other modules you want to install and select **OK**. After the selected modules are installed, the **CMS Fiscal Calendar** window will open.

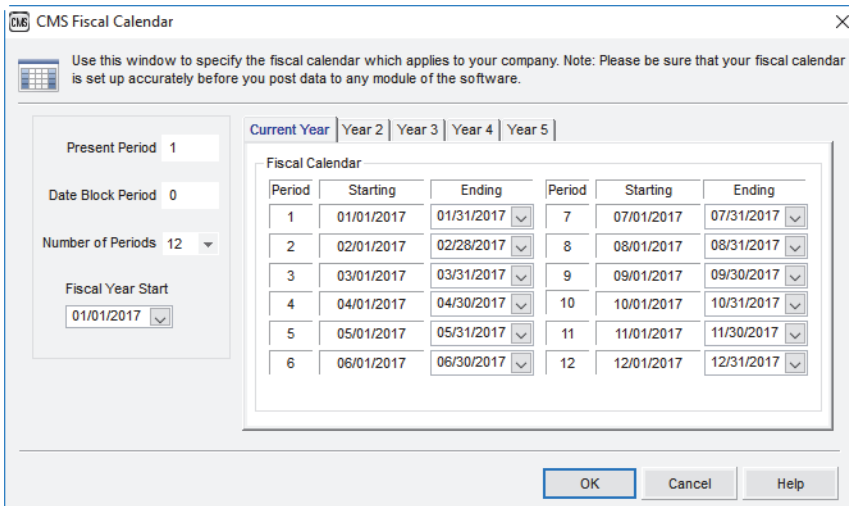


Figure 7: CMS Fiscal Calendar window

- 4 Set up the fiscal calendar to best meet the needs of your organization. The fiscal calendar affects how your transactions post and it can be difficult to change the calendar after you've posted.
- 5 Select **OK**. You can now access all of your installed modules. See "Minimum Setup for Each Module" on page 7 for a list of the minimum setup you must complete for each module before you can begin using Denali.

Minimum Setup for Each Module

After all of your QuickBooks® data is imported into Denali, you are ready to begin using the software. Although your QuickBooks data is available, you still need to complete setup tasks in all of your Denali modules. Many of our customers find training very helpful at this stage. Please contact your account representative if you want to find out about our training options.

Below is a list of the minimum setup required, but we recommend you review all the features of Denali so you can effectively set it up to meet the needs of your organization. Please review our Getting Started guide along with the setup section in the user's guides for each module for additional information.

You can access help from within Denali by clicking the **Help** button in the software windows or selecting **Help > Contents** from the menu bar. We also offer web help, which you can access at <https://cougarmtnservice.com/help>, and PDFs, which you can access from the Documentation section of the Customer Service Center at <https://cougarmtnservice.com/documentation>.

Accounts Payable

For help with the Accounts Payable module, see the Accounts Payable PDF, embedded help, or web help. You can also click the **Help** button in any window.

- Your vendor accounts were imported from QuickBooks, but you will need to review them and enter additional information in the AP Vendors window.
- The AP Code called *AP* was created by default during the import process, but you need to finish setting up this Code and possibly create others.
- Define settings and review integration in Module Preferences.

Accounts Receivable

For help with the Accounts Receivable module, see the Accounts Receivable PDF, embedded help, or web help. You can also click the **Help** button in any window.

- Your customer accounts were imported from QuickBooks, but you will need to review them and enter additional information in the AR Customers window.
- The AR Code called *AR* was created by default during the import process, but you need to finish setting up this Code and possibly create others.
- The Terms Code *NET30* was created by default during the import process, but you need to finish setting up this Code and possibly create others.
- Transaction Codes are set up by default, but you need to enter your ledger accounts and possibly set up additional Codes.
- Define settings and review integration in Module Preferences.

Controller

For help with the Controller module, see the Controller PDF, embedded help, or web help. You can also click the **Help** button in any window.

Much of the Controller setup was done as part of the import, but you will need to set up users and security.

General Ledger

For help with the General Ledger module, see the General Ledger PDF, embedded help, or web help. You can also click the **Help** button in any window.

- Your ledger accounts were imported from QuickBooks, but you should review your Chart of Accounts for accuracy and to make any updates. If you included inactive accounts in your QuickBooks export, you need to mark these accounts as inactive in Denali.

- In the GL Accounts window, you need to adjust the account balance on your retained earnings account to include the difference between revenues and expenses. You can find this number on the Net Income line of your QuickBooks® Balance Sheet Standard. This should put your ledger in balance.
- Account Segment Setup/Define settings in Module Preferences.

Inventory

For help with the Inventory module, see the Inventory PDF, embedded help, or web help. You can also click the **Help** button in any window.

- Your stock items were imported from QuickBooks, but you will need to review them and enter additional information in the IN Stock window.
- Based on your data that was imported, at least one Inventory Code was created. If you had more than one asset account or COGS account in QuickBooks, additional Inventory Codes were created. You will need to finish setting up these Codes and possibly create others.
- Define settings and fix integration in Module Preferences.

Payroll

For help with the Payroll module, see the Payroll PDF, embedded help, or web help. You can also click the **Help** button in any window.

- Your employee records were imported from QuickBooks, but you will need to review them and enter additional information in the Employee Management window.
- Department Codes were imported from QuickBooks, but you need to enter additional information in Denali and possibly define additional Codes.
- Tax Codes were created during the import based on the state in which employees worked. You need to update these in Denali so they are accurate.
- Multiple Leave Codes were imported from QuickBooks based on combinations of Rate and Limit. You will need to enter additional information in Denali and possibly define additional Codes.
- Define settings and review integration in Module Preferences.

Sales

For help with the Sales module, see the Sales PDF, embedded help, or web help. You can also click the **Help** button in any window.

- A default Salesperson Code was created during the import, but you need to review the settings and possibly create additional Codes.
- A default Department Code was created during the import, but you need to review the settings and possibly create additional Codes.
- If you use Point of Sale, a default Register Code was created during the import, but you need to review the settings and possibly create additional Codes.
- If you imported Inventory stock items, review your Sales Tax Codes.
- Define settings and review integration in Order Entry Module Preferences or Point of Sale Module Preferences.

Chapter 2

QuickBooks® Import File Requirements

Accounts Payable

Accounts Receivable

General Ledger

Inventory

Payroll

Sales

Your QuickBooks import file must meet certain requirements for each module to be successfully imported into Denali. The information tables for each module show which fields Denali will import.

You might need to customize your QuickBooks export to include the fields you want to import into Denali. All files need at least four columns with headings to import. Required fields cannot be blank and are noted with an asterisk in each table.

During the import process, a report will be generated that shows you any errors in your files that must be corrected before you can import your data. The report will also show you warnings that you can choose to either fix in the import file or after the data is in Denali.

Accounts Payable

These are the master account fields that are imported from QuickBooks® and the corresponding field names in Denali. Required fields are noted with an asterisk.

An AP Code called *AP* will be generated during the import and attached to all your vendors. You will need to define this Code in the AP Codes window. If you import a vendor with a balance forward amount, you will not be able to change the attached AP Code until the balance is zero.

QuickBooks Export	Denali Field	Notes
*Vendor	Number	50 character limit, uppercase, unique
Vendor	Co/Name	50 character limit
Account No.	Customer #	50 character limit
Website	Internet	80 character limit
Main Email	E-mail	80 character limit
Vendor Type	Prod Type	50 character limit
Tax ID	Federal ID	50 character limit
Eligible for 1099	1099 Applicable	Checked if the value is Yes
Main Phone	Telephone	Formatted
Fax	FAX	Formatted
Mobile	Cell	Formatted
Balance Total	Total Due	Numeric, open and history files
Credit Limit	Credit Limit	Numeric, defaults to 0
Bill From 1 - 5	Address	35 character limit for each line

* Required Field

Accounts Receivable

These are the master account fields that are imported from QuickBooks® and the corresponding field names in Denali. Required fields are noted with an asterisk.

A Terms Code called *NET30* and an AR Code called *AR* will be generated during the import and attached to your customers. You will need to define these Codes in the AR Terms Codes and AR Codes windows, respectively. If you import a customer with a balance forward amount, you will not be able to change the attached AR Code until the balance is zero.

QuickBooks Export	Denali Field	Notes
*Customer	Number	50 character limit, uppercase, unique
Customer	Name	50 character limit
Active Status	Inactive	Checked if the value is not "ACTIVE"
Balance Total	Bal Fwd	Numeric, Open and History tables, defaults to 0
Credit Limit	Credit Limit	Numeric, defaults to 0
First Name	Contact	50 characters on the AR Customers window Contacts tab; merged with M.I. and Last Name and shares 35 character in the Header
M.I.	Contact	Merged with First Name and Last Name and shares 35 characters in the Header
Last Name	Contact	50 characters on the AR Customers window Contacts tab; merged with First Name and M.I. and shares 35 characters in the Header
Main Phone	Telephone	Formatted
Fax	FAX	Formatted
Alt Phone	Alternate	Formatted
Main Email	E-mail Address	80 character limit
Bill to1 - 5	Bill To Address	Each line is 35 characters
Ship to 1 - 5	Ship To Address	Each line is 35 characters

* Required Field

General Ledger

These are the master account and transaction history fields that are imported from QuickBooks® and the corresponding field names in Denali. Required fields are noted with an asterisk.

QuickBooks Master Export	Denali Field	Notes
*Acct. #/Account	Number	50 character limit, uppercase, unique; if this field is not in the import, the value will come from the Account column; account numbers are made up of the header row and header subaccounts.
Account	Description	50 character limit
*Type	Class	Mapping for Type/Class is below
*Balance	Balance	Blank field will import as \$0; imports into history

* Required Fields

You can only import history transactions if you previously imported all accounts in the master file (including inactive accounts). In QuickBooks, your **Reports and Graphs Company Preferences** must be set to **Name only** in the **Reports - Show Accounts By** section or you will not be able to import transaction history.

Transaction history is imported with a posting reference of "QBGL TranImport" and a batch of "_QBGL_." Transaction history imports into the GL_PostedDetail table.

QuickBooks Transaction History Export	Denali Field	Notes
*Any account group	Account Number	Uses the mapping established during the master import; account numbers are made up of the header row and header subaccounts.
Date	Trans. Date	Date format
Item Description	Trans. Detail Description	120 characters
*Amount	Debit/Credit	Numeric; stored as a single value (curAmount) and split up on reports
Last modified by	User ID	6 characters
The following fields are only used if you're importing Sales transaction history.		
*Trans #		Numeric; used to match GL and Sales transactions
*Type		Text; no size limit; used to match GL and Sales transactions
*Num		Text; no size limit; used to match GL and Sales transactions
Name		6 characters, uppercase; populates the tax vendor on generated Tax Codes

QuickBooks Transaction History Export	Denali Field	Notes
Memo		120 characters; used in place of item description when generating missing sales lines
*Item		6 characters, uppercase; matches/creates Tax Codes and other sales lines
Sales Tax Code		Used when generating missing sales lines
*Qty		Numeric; used when generating missing sales lines
*Sales Price		Numeric followed by %; holds the tax percent on Sales Tax lines

* Required Fields

Below is a table mapping QuickBooks account types and Denali account classes.

QuickBooks Account Type	Denali Class
Non-Posting	Non ledger
Bank	Current Asset
Accounts Receivable	Current Asset
Other Current Asset	Current Asset
Other Asset	Asset
Fixed Asset	Fixed Asset
Accounts Payable	Current Liability
Credit Card	Current Liability
Other Current Liability	Current Liability
Long Term Liability	Long Term Liability
Equity	Equity
Income	Income (Operating Credit)
Other Income	Other Revenue/Gains (Income)
Cost of Goods Sold	Cost of Goods Sold (Expense)
Expense	Expense (Operating Debit)
Other Expense	Other Expense (Expense)

Inventory

These are the master account fields that are imported from QuickBooks® and the corresponding field names in Denali. Required fields are noted with an asterisk.

There are several values that might appear in the Type column of the QuickBooks import file. Only rows with the following values will be imported:

- Sales Tax Item is imported into the Tax Codes table
- Non-Inventory Part is imported into the Non-Inventory Codes table
- Service is imported into the Non-Inventory Codes table
- Inventory Part is imported into the Stock Items table

An IN Code called *I1* will be generated during the import and attached to your stock items. If more IN Codes are needed based on the stock item requirements, additional IN Codes will be created with the naming scheme *I2*, *I3*, etc. All of these Codes will default to FIFO as the valuation method. You will need to define these Codes in the IN Inventory Codes window. Although you can change the valuation method on an IN Code, it is not recommended when a stock item has quantity on hand.

QuickBooks Export	Denali Field	Notes
*Type		The value in this column determines which Denali table the data is imported into. See the list above.
*Item	Based on the Type field, Sales Tax Item Type = Sales Tax Code, Non-Inventory Part Type = Non-Inventory Code, or Inventory Part Type = Number	6 character limit for Tax Codes and Non-Inventory Codes; 50 character limit for Stock Items; uppercase, unique
Description	Description	50 character limit for Tax Codes and Non-Inventory Codes; 120 character limit for Stock Items; if blank, Denali gets value from Item field
Account	Based on the Type field, Sales Tax Item Type = Account Number, Non-Inventory Part Type = General Ledger Sales, or Inventory Part Type = GL Sales Income	50 character limit; only appears if there is no integration to Accounts Payable
Taxing Agency	Vendor	50 characters, only when integrated to Accounts Payable
Price	Based on the Type field, Sales Tax Item Type = Tax Percent, Non-Inventory Part Type = Unit Price, or Inventory Part Type = List	Numeric, up to 4 decimal places; for stock items, defaults to list pricing, line 1

QuickBooks Export	Denali Field	Notes
Cost	Based on the Type field, Non-Inventory Part Type = Unit Cost or Inventory Part Type = Last Cost	Numeric; for stock items, Last Cost will also appear in the IN Stock window on the Vendor tab
Sales Tax Code	Taxable (check box)	Checked if value is not "Non"
*Asset Account	GL Control Acct	50 character limit
COGS Account	GL Cost of Goods Sold Acct	50 character limit
Preferred Vendor	Primary Vendor	Primary Vendor will also appear in the IN Stock window on the Vendor tab
MPN	Vendor Stock	50 character limit
U/M	Unit Package	10 character limit
Reorder Pt (min)	Minimum and Maximum	Numeric
Quantity On Hand	On Hand	Numeric
Purchase Description	Notes	If not blank, prefixed with "Purchase Description"

* Required Field

Payroll

These are the master account fields that are imported from QuickBooks® and the corresponding field names in Denali. Required fields are noted with an asterisk.

If the Department column is blank, Denali will create as many Department Codes as necessary using the scheme *DEPT1*, *DEPT2*, etc. Leave Codes are generated as Vacation or Sick types and multiple Codes will be created based on the different combinations of Rate and Limit. You will need to define these Codes in the PR Department Codes and PR Leave Codes windows, respectively. You will also need to review all the information in the Employee Management window, including Pay Rates.

QuickBooks Export	Denali Field	Notes
Account No.	Employee Number	If blank, Denali will create this from the Name fields
Employee	Name Used	Will match First Name, M.I., and Last Name
Department	Department	10 character limit, uppercase, unique
*SS No.	SSN	Encrypted
*First Name	Employee Name (First)	50 character limit
M.I.	Employee Name (MI)	1 character limit
*Last Name	Employee Name (Last)	50 character limit

QuickBooks Export	Denali Field	Notes
Active Status	Status	Active or Inactive unless there is a Termination Date, then status is Terminated. Active, Inactive, Temporary, and Terminated Codes will be generated.
Job Title	Position	50 character limit
Emergency Name (1)	Emergency Contact	50 character limit
Emergency Phone (1)	Phone Number (Emergency Contact)	Formatted; area code is required for correct formatting
Pay Period	Pay Frequency	Encoded
*Federal Allowances	Exceptions (Federal Tax Line)	Numeric; data is required
Federal Extra Amount	Additions (Federal Tax Line)	Numeric, defaults to 0
State Worked	Tax Code (State Tax Line)	Must be a valid state or province; Tax Codes will be generated based on each valid state, but you need to update them in Denali.
State Allowances	Exceptions (State Tax Line)	Numeric, defaults to 0
State Extra Amount	Additions (State Tax Line)	Numeric, defaults to 0
Sick Limit	Accumulation Limit in the Leave Codes window or Annual Limit on the Employee Management window Leave tab	Can be numeric or formatted as hh:mm; blank will default to 0
Sick Rate	Leave Codes Accrual Rate and Apply drop-down value	Can be numeric or formatted as hh:mm; blank will default to 0; if the amount is less than 1, the rate is imported as Per unit, if the amount is between 1 and 30, the rate is imported as Per period; if the amount is greater than or equal to 30, the rate is Annually.
Sick Available	Remaining on the Employee Management window Leave tab	Can be numeric or formatted as hh:mm; blank will default to 0
Sick Used	Used on the Employee Management window Leave tab	Can be numeric or formatted as hh:mm; blank will default to 0
Vacation Limit	Accumulation Limit in the Leave Codes window or Annual Limit on the Employee Management window Leave tab	Can be numeric or formatted as hh:mm; blank will default to 0

QuickBooks Export	Denali Field	Notes
Vacation Rate	Leave Codes Accrual Rate and Apply drop-down value	Can be numeric or formatted as hh:mm; blank will default to 0; if the amount is less than 1, the rate is imported as Per unit, if the amount is between 1 and 30, the rate is imported as Per period; if the amount is greater than or equal to 30, the rate is Annually.
Vacation Available	Remaining on the Employee Management window Leave tab	Can be numeric or formatted as hh:mm; blank will default to 0
Vacation Used	Used on the Employee Management window Leave tab	Can be numeric or formatted as hh:mm; blank will default to 0
Date of Birth	Birth Date	Date format
Hire Date/Original Hire Date	Hire Date	Date format from Hire Date
Date of last raise	Last Raise	Date format
Date of Last Check	Check Date	Date format
Last Day Worked	Termination Date	Date format
Address/Street 1, Street 2, City, State, Zip	Address in Employee Management window	Street 1/Street 2, City (50 character limit), State (2 character), ZIP (15 character limit), Country (20 character limit)
*Federal Filing Status	Filing Status in the Header	If State Filing status is included and it's Head of Household, it will import as Head of Household. You cannot import the QuickBooks Filing Status "Don't Withhold." You must change this status in QuickBooks before you can import.
Home Phone/Alt. Phone/ Work Phone	Phone Number	Imports from the Home Phone first; if it's blank, imports from Alt. Phone, if that's also blank, imports from Work Phone; area code is required for correct formatting
Mobile Phone	Cell Phone	Phone format; area code is required for correct formatting
Main Email/CC Email	Email	255 character limit; imports from Main Email; if blank, imports from CC Email

QuickBooks Export	Denali Field	Notes
Earnings 1/Rate	Rate, Description/Regular Rate	A Pay Rate line is created; Rate (6 character limit, numeric), Description (50 character limit); Department, and State Tax Code will be included. If the amount is less than 500, an hourly rate is created. If the amount is more than 500, a salary rate is created.
Earnings 2/Rate	Rate, Description/Regular Rate	Same as Earnings 1/Rate
Earnings 3/Rate	Rate, Description/Regular Rate	Same as Earnings 1/Rate
Earnings 4/Rate	Rate, Description/Regular Rate	Same as Earnings 1/Rate
Earnings 5/Rate	Rate, Description/Regular Rate	Same as Earnings 1/Rate
Earnings 6/Rate	Rate, Description/Regular Rate	Same as Earnings 1/Rate
Earnings 7/Rate	Rate, Description/Regular Rate	Same as Earnings 1/Rate
Earnings 8/Rate	Rate, Description/Regular Rate	Same as Earnings 1/Rate

* Required Fields

Sales

These are the transaction history fields that are imported from QuickBooks® and the corresponding field names in Denali. Required fields are noted with an asterisk.

To import Sales transaction history, you must import GL transaction history and GL master accounts.

Here are a few items to note:

- Because Last Cost does not export from QuickBooks your Profit Margin Report in Denali will not be accurate.
- Because Base Price does not export from QuickBooks your Price Variance Report will not show variance.
- Fixed Assets and Job Cost line items are imported as special order items.
- Data is imported into the SA_HistoryHeader, SA_HistoryDetail, and SA_HistoryCloseout tables.
- If the import is into Point of Sale, a fake posted register is imported into the SA_HistoryRegisterCode and SA_HistoryRegisterClosing tables.

- Tax amounts are imported into the HistoryTax table.

QuickBooks Transaction History Export	Denali Field	Notes
*At least one level of subgroups containing a line type		Line types include stock items, parts, services, other charges, and discounts
*Trans #		Numeric
*Type		Text; no size limit; if the value is "Sales Receipt", it imports as a cash transaction; if the value is anything else, it imports as an AR Charge
Last modified by	User ID/Salesperson	6 characters
Date	Transaction Date; UDF 5 default value; closeout deposit; return date	Date format
*Num	Invoice Number	50 characters; cannot be blank; if it's not unique Denali will add lowercase letters to make it unique
Name Contact/Name Street 1/Name Street 2/ Name City/ Name State/ Name ZIP	Billing Address	35 characters all fields
Name Phone #	Billing and Shipping phone number	50 characters
Name Fax #	Billing and Shipping Fax number	50 characters
Name E-Mail	Billing and Shipping email	255 characters
Name	Customer, Customer Name	50 characters each field; these should match customers imported into AR
Memo	Trans. Detail Description	120 characters; if this field has text, it will be used instead of Item Description
*Item	Stock Number, IN Code	50 characters, imports into the strStock field; if the item was imported with Inventory, it will match the stock number and the IN Code will be included
Item Description	Trans. Detail Description	120 characters
Sales Tax Code	Taxable	This sets the taxable flag and does not match Denali's Tax Code; only "Non-Taxable Sales" are not taxable
*Qty	Quantity Ordered, Quantity Shipped	Numeric; defaults to 1 if blank

QuickBooks Transaction History Export	Denali Field	Notes
*Sales Price	Unit Price	Numeric
*Amount	Extended Price, Transaction Subtotal, Transaction Total Payment	Numeric; this amount is compared to the opposing line in GL and if they don't match a warning will be generated
Ship To Address 1/Ship To Address 2/Ship To City/Ship To State/Ship To ZIP	Shipping Address	35 characters all fields

* Required Fields

DENALI



**COUGAR
MOUNTAIN
SOFTWARE**

7180 Potomac Dr.
Boise, Idaho 83704
Sales: (800) 388-3038
Customer Support: (800) 390-7053
Forms & Supplies: (800) 454-1660
www.cougarmtn.com