



MODULE 3 Workbook



Anatomy of a Lace Chart

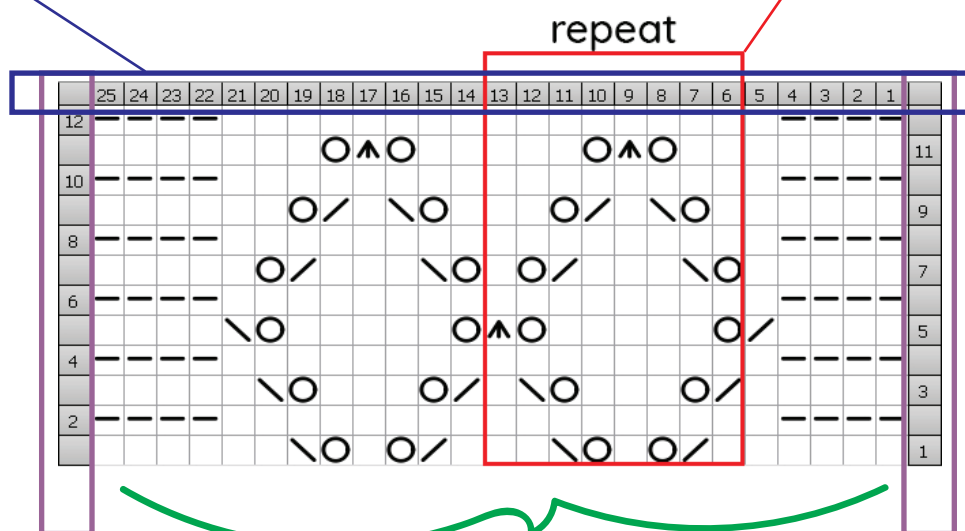
Stitch Count

Shows the number of stitches in a row BEFORE working that row.
Increases and decreases during the row may change the number of actual stitches by the end.

*Particularly useful for counting long stretches of knit stitches

Repeat Box

Designates that this section is repeated in the pattern.



Stitch Symbols

Each symbol represents a stitch.

Check your chart symbol key to find out what each symbol means

Key:

- ☐ Knit (K) ☒ Knit two together (K2tog)
- ☒ Yarn Over (YO) ☒ Slip, Slip, Knit (SSK)
- ☒ Centered Double Decrease (CDD)

Row Numbers

Row numbers are shown on each side of the chart
Right Side rows on the right
Wrong Side rows on the left

Reading a Knitting Chart

Reading Direction

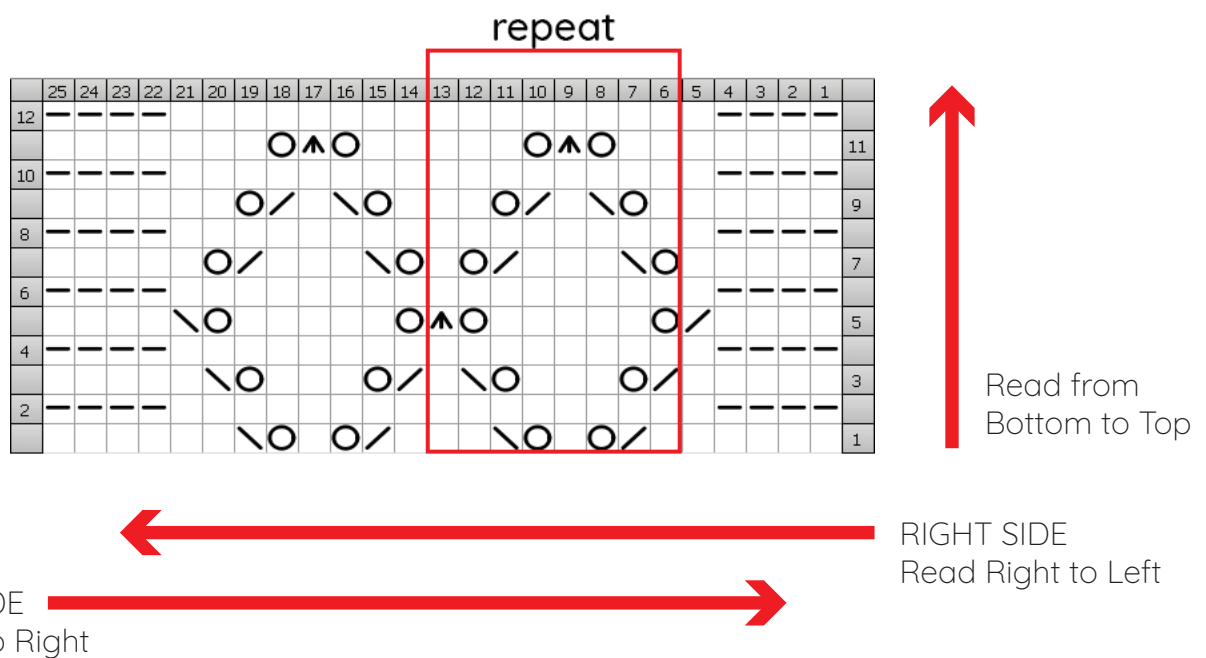
- Charts are read from Bottom to TOP
- RIGHT side rows are read from Right to left
- Wrong side rows are read from Left to right

Symbols

- There isn't a standardized set of symbols
- Different designers may use different "fonts" for their symbols
- Stitches mean the OPPOSITE on wrong side rows
- Always check your stitch key to know what each symbol means

Charts are Condensed

- Check charts for repeats
- Check written instructions to know if the chart is knit in the round or flat
- If wrong side rows are missing, check written instructions for directions



Reading a Stitch Map

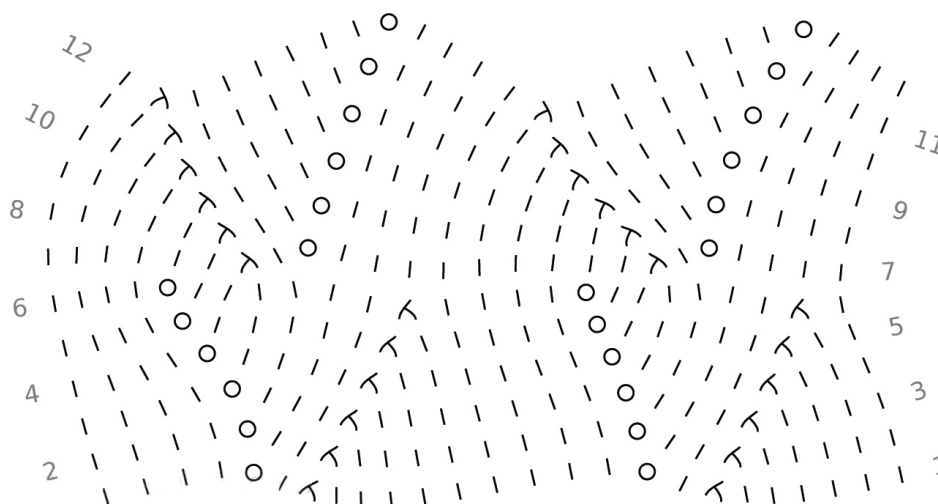
Read the same as a standard chart

- No Rigid boxes
- Solves the “No Stitch” problem
- Shows the shape and bias of the lace better
- Shows how stitches line up with each other and interact in the final fabric

Climbing Ivy - Standard Chart







| | 25 | 24 | 23 | 22 | 21 | 20 | 19 | 18 | 17 | 16 | 15 | 14 | 13 | 12 | 11 | 10 | 9 | 8 | 7 | 6 | 5 | 4 | 3 | 2 | 1 | |
|----|----|----|----|----|----|----|----|----|----|----|----|----|----|----|----|----|---|---|---|---|---|---|---|---|---|----|
| 12 | | | | | | | | | ○ | | | | | | | | | | | | ○ | | | | | |
| 10 | | | | | | | | | ○ | | | | | | | | | | | | ○ | | | | | 11 |
| 8 | | | | | | | | | ○ | | | | | | | | | | | | ○ | | | | | 9 |
| 6 | | | | | | | | | ○ | | | | | | | | | | | | ○ | | | | | 7 |
| 4 | | | | | | | | | ○ | | | | | | | | | | | | ○ | | | | | 5 |
| 2 | | | | | | | | | ○ | | | | | | | | | | | | ○ | | | | | 3 |
| | | | | | | | | | ○ | | | | | | | | | | | | ○ | | | | | 1 |

Climbing Ivy - Stitch Map



Stitch Symbol Cheat Sheet - RIGHT SIDE

Basic Stitches




| | meaning | abbreviation | description |
|---|---------|--------------|-------------|
|  or  or  | Knit | K | Knit |
|  or  or  | Purl | P | Purl |

Decreases

| | | | |
|--|-------------------------------|--------------|-----------------|
|  or  or  or  | Right Leaning Single Decrease | K2tog | Knit 2 together |
|--|-------------------------------|--------------|-----------------|

| | | |
|--|------------------------------|--|
|  or  or  or  | Left Leaning Single Decrease | SSK Slip, Slip, Knit SKP Slip, Knit, Pass slipped stitch over K2tog tbl Knit 2 together through the back loop |
|--|------------------------------|--|

| | | | |
|---|-------------------------------|--------------|-----------------|
|  or  or  | Right Leaning Double Decrease | K3tog | Knit 3 together |
|---|-------------------------------|--------------|-----------------|

| | | |
|---|------------------------------|--|
|  or  or  | Left Leaning Double Decrease | SSSK Slip, Slip, Slip, Knit SSKP Slip, Slip, Knit, Pass slipped stitch over Sl1, K2tog, Psso Slip1, Knit 2 together, Pass slipped stitch over K3tog tbl Knit 3 together through the back loop |
|---|------------------------------|--|

| | | | |
|---|--------------------------|------------|---|
|  or  or  | Centered Double Decrease | CDD | Slip 2 as if to knit, Knit 1 pass slipped stitches over |
|---|--------------------------|------------|---|

Purl Stitches

Adding a ● or — to any symbol changes that stitch from Knit to Purl.

ex:  = K2tog  or  = P2tog



Stitch Symbol Cheat Sheet - RIGHT SIDE 2

Single Increases

| | meaning | abbreviation | description |
|--|-------------------------------|------------------|----------------------------------|
| | Decorative Increase | YO | Yarn Over |
| | Single Increase | INC or M1 | Make 1, or Lift 1, or Cast on 1 |
| | | Kfb | Knit Front & Back in same stitch |
| | | | |
| | Left leaning Single Increase | M1L | Make 1 Left, or Lift 1 Left |
| | | | |
| | Right leaning Single Increase | M1R | Make 1 Right, or Lift 1 Right |
| | | | |

Double Increases




| | | | |
|--|----------------------------|-----------------|--|
| | Decorative Double Increase | K, YO, K | Knit, Yarn Over, Knit in the same stitch |
| | | | |
| | Double Increase | Kfbf | Knit Front, Back & Front in same stitch |
| | | KPK | Knit, Purl, & Knit in same stitch |
| | | | |

Specialty Stitches

| | | | |
|--|------------------------|--------------|---|
| | No Stitch | | There is no stitch here (place holder) |
| | | | |
| | Bind Off | BO | Bind Off |
| | | | |
| | Twisted Stitch | K tbl | Knit through the back loop |
| | | | |
| | | | |
| | | | |
| | Decorative Knot Stitch | NUPP | Knit Front, Back, Front, Back, Front in same stitch |
| | | | Purl 5 stitches together on next row |





Stitch Symbol Cheat Sheet - WRONG SIDE

Basic Stitches




| | meaning | abbreviation |
|---|---------|--------------|
|  or  or  | Knit | P |
|  or  or  | Purl | K |

Decreases

| | | | |
|--|-------------------------------|--------------|-----------------|
|  or  or  or  | Right Leaning Single Decrease | P2tog | Purl 2 together |
|--|-------------------------------|--------------|-----------------|

| | | | |
|--|------------------------------|------------------|--|
|  or  or  or  | Left Leaning Single Decrease | SSP | Slip, Slip, Purl |
| | | SPP | Slip, Purl, Pass slipped stitch over |
| | | P2tog tbl | Purl 2 together through the back loop |

| | | | |
|---|-------------------------------|--------------|-----------------|
|  or  or  | Right Leaning Double Decrease | P3tog | Purl 3 together |
|---|-------------------------------|--------------|-----------------|

| | | | |
|---|------------------------------|--------------------------|---|
|  or  or  | Left Leaning Double Decrease | SSSP | Slip, Slip, Slip, Purl |
| | | SSPP | Slip, Slip, Purl, Pass slipped stitch over |
| | | Sl1, P2tog, Pssso | Slip1, Purl 2 together, Pass slipped stitch over |
| | | P3tog tbl | Purl 3 together through the back loop |

| | | | |
|---|--------------------------|------------|--|
|  or  or  | Centered Double Decrease | CDD | Slip 2 as if to knit, Purl 1 pass slipped stitches over |
|---|--------------------------|------------|--|

Purl Stitches

Adding a ● or — to any symbol changes that stitch from Knit to Purl.

ex:  = K2tog  or  = P2tog

Stitch Symbol Cheat Sheet - RIGHT SIDE 2

Single Increases

| | meaning | abbreviation | description |
|--|-------------------------------|------------------|----------------------------------|
| | Decorative Increase | YO | Yarn Over |
| | Single Increase | INC or M1 | Make 1, or Lift 1, or Cast on 1 |
| | | Kfb | Knit Front & Back in same stitch |
| | | | |
| | Left leaning Single Increase | M1R | Make 1 Right, or Lift 1 Right |
| | | | |
| | Right leaning Single Increase | M1L | Make 1 Left, or Lift 1 Left |
| | | | |

Double Increases

| | | | |
|--|----------------------------|-----------------|--|
| | Decorative Double Increase | P, YO, P | Purl, Yarn Over, Purl in the same stitch |
| | | | |
| | Double Increase | Pfbf | Purl Front, Back & Front in same stitch |
| | | PKP | Purl, Knit, & Purl in same stitch |
| | | | |

Specialty Stitches

| | | | |
|--|----------------|--------------|--|
| | No Stitch | | There is no stitch here (place holder) |
| | | | |
| | Bind Off | BO | Bind Off |
| | | | |
| | Twisted Stitch | P tbl | Purl through the back loop |
| | | | |
| | | | |
| | | | |

Chart Practice

Translate the chart symbols to written knitting instructions
(Answers on bottom of following page)

Diamond Lace

| | 25 | 24 | 23 | 22 | 21 | 20 | 19 | 18 | 17 | 16 | 15 | 14 | 13 | 12 | 11 | 10 | 9 | 8 | 7 | 6 | 5 | 4 | 3 | 2 | 1 | |
|----|----|----|----|-----|----|----|-----|----|----|----|----|-----|----|-----|----|----|----|---|----|----|-----|----|----|----|---|----|
| 12 | | | | | | | | | | | | | | | | | | | | | | | | | | |
| | | | | ○▲○ | | | | | | | | ○▲○ | | | | | | | | | ○▲○ | | | | | 11 |
| 10 | | | | | | | | | | | | | | | | | | | | | | | | | | |
| | | | ○/ | | \○ | | | | | ○/ | | \○ | | | | | | | | ○/ | | \○ | | | | 9 |
| 8 | | | | | | | | | | | | | | | | | | | | | | | | | | |
| | | ○/ | | | \○ | | ○/ | | | \○ | | ○/ | | | \○ | | ○/ | | | \○ | | | | | | 7 |
| 6 | | | | | | | | | | | | | | | | | | | | | | | | | | |
| | \○ | | | | | | ○▲○ | | | | | | | ○▲○ | | | | | | | | | | ○/ | | 5 |
| 4 | | | | | | | | | | | | | | | | | | | | | | | | | | |
| | | \○ | | | ○/ | | \○ | | | ○/ | | \○ | | | ○/ | | \○ | | | ○/ | | | ○/ | | | 3 |
| 2 | | | | | | | | | | | | | | | | | | | | | | | | | | |
| | | \○ | | ○/ | | | \○ | | ○/ | | \○ | | ○/ | | \○ | | ○/ | | \○ | | ○/ | | | | | 1 |

Write instructions here:

Chart Practice

Translate the written instructions into chart format
(Answers on bottom of following page)

Falling Ferns

Row 1: yo, cdd, yo, p1, k9, yo, k1, yo, k4, sssk, p1, yo, cdd, yo

Row 2 and all even rows: Purl

Row 3: yo, cdd, yo, p1, k10, yo, k1, yo, k3, sssk, p1, yo, cdd, yo

Row 5: yo, cdd, yo, p1, k3tog, k4, yo, k1, yo, k3, yo, k1, yo, k2, sssk, p1, yo, cdd, yo

Row 7: yo, cdd, yo, p1, k3tog, k3, yo, k1, yo, k5, yo, k1, yo, k1, sssk, p1, yo, cdd, yo

Row 9: yo, cdd, yo, p1, k3tog, k2, yo, k1, yo, k11, p1, yo, cdd, yo

Row 11: yo, cdd, yo, p1, k3tog, k1, yo, k1, yo, k12, p1, yo, cdd, yo

Fill in symbols here:

| | 25 | 24 | 23 | 22 | 21 | 20 | 19 | 18 | 17 | 16 | 15 | 14 | 13 | 12 | 11 | 10 | 9 | 8 | 7 | 6 | 5 | 4 | 3 | 2 | 1 | |
|----|----|----|----|----|----|----|----|----|----|----|----|----|----|----|----|----|---|---|---|---|---|---|---|---|---|----|
| 12 | | | | | | | | | | | | | | | | | | | | | | | | | | |
| | | | | | | | | | | | | | | | | | | | | | | | | | | 11 |
| 10 | | | | | | | | | | | | | | | | | | | | | | | | | | 9 |
| | | | | | | | | | | | | | | | | | | | | | | | | | | 7 |
| 8 | | | | | | | | | | | | | | | | | | | | | | | | | | 5 |
| | | | | | | | | | | | | | | | | | | | | | | | | | | 3 |
| 6 | | | | | | | | | | | | | | | | | | | | | | | | | | 1 |
| | | | | | | | | | | | | | | | | | | | | | | | | | | |
| 4 | | | | | | | | | | | | | | | | | | | | | | | | | | |
| | | | | | | | | | | | | | | | | | | | | | | | | | | |
| 2 | | | | | | | | | | | | | | | | | | | | | | | | | | |
| | | | | | | | | | | | | | | | | | | | | | | | | | | |

Answers for previous page:

Diamond Lace

Row 1 (RS): K2, k2tog, yo, k1, yo, ssk, k3, k2tog, yo, k1, yo, ssk, k3, k2tog, yo, k1, yo, ssk, k2.

Rows 2, 4, 6, 8, 10, and 12: P25.

Row 3: K1, k2tog, yo, k3, yo, ssk, k1, k2tog, yo, k3, yo, ssk, k1, k2tog, yo, k3, yo, ssk, k1.

Row 5: K2tog, yo, k5, yo, CDD, yo, k5, yo, CDD, yo, k5, yo, ssk.

Row 7: K1, yo, ssk, k3, k2tog, yo, k1, yo, ssk, k3, k2tog, yo, k1, yo, ssk, k3, k2tog, yo, k1.

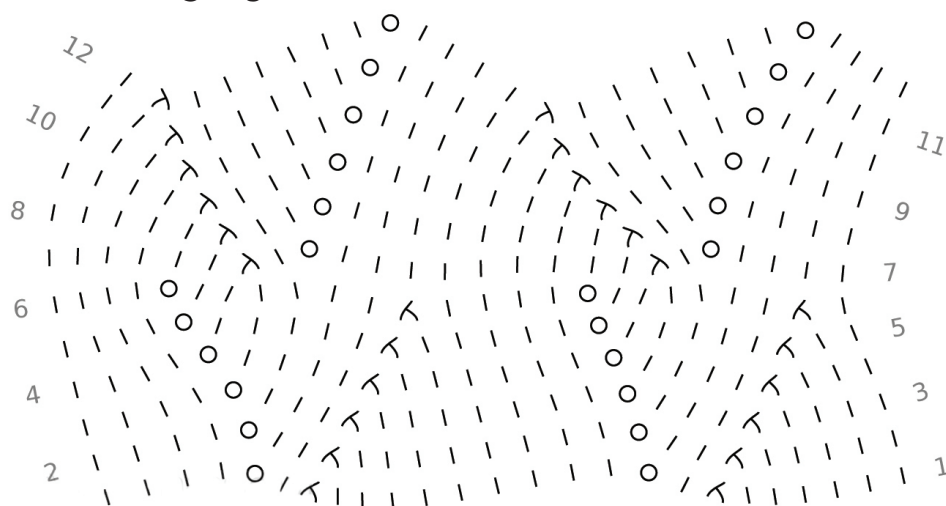
Row 9: K2, yo, ssk, k1, k2tog, yo, k3, yo, ssk, k1, k2tog, yo, k3, yo, ssk, k1, k2tog, yo, k2.

Row 11: K3, yo, CDD, yo, k5, yo, CDD, yo, k5, yo, CDD, yo, k3.

Chart Practice

Translate the Stitch Map symbols to written knitting instructions
(Answers on bottom of following page)

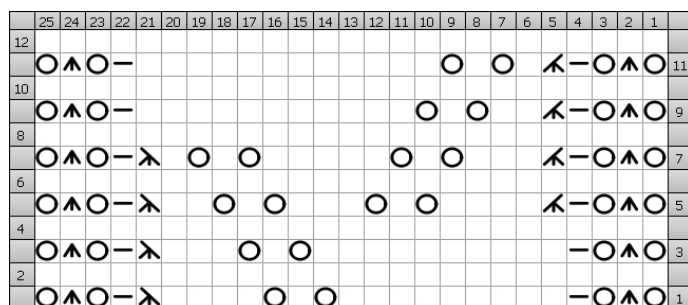
Climbing Ivy



Write instructions here:

Answers for previous page:

Falling Ferns



Additional Practice

Print off as many copies of the graph paper at the end of this workbook to create your own charts!

Try making your own charts, or translate patterns that you find in books, magazines, or on the internet.

You can also create your own charts and stitch patterns digitally for free!

Charts - www.stitchfiddle.com

Stitch Maps - www.stitch-maps.com

Psssst. Don't forget to checkout the "50 Scarves of Lace" bonus! It has gobs of lace stitch patterns for you to practice with, or mix and match them to make your own lace masterpieces! (Look for it in the Bonus Section of the course)

Answers for previous page:

Climbing Ivy

Row 1 (RS): K6, k2tog, k1, yo, k9, k2tog, k1, yo, k4.
Row 2: P4, yo, p2, p2tog, p8, yo, p2, p2tog, p5.
Row 3: K4, k2tog, k3, yo, k7, k2tog, k3, yo, k4.
Row 4: P4, yo, p4, p2tog, p6, yo, p4, p2tog, p3.
Row 5: K2, k2tog, k5, yo, k5, k2tog, k5, yo, k4.
Row 6: P4, yo, p6, p2tog, p4, yo, p6, p2tog, p1.
Row 7: K4, yo, k1, ssk, k9, yo, k1, ssk, k6.
Row 8: P5, ssp, p2, yo, p8, ssp, p2, yo, p4.
Row 9: K4, yo, k3, ssk, k7, yo, k3, ssk, k4.
Row 10: P3, ssp, p4, yo, p6, ssp, p4, yo, p4.

Diamond Lace Washcloth

Size: 9.5" x 7"

Blocked Gauge:

13 stitches / 24 rows = 4"

Materials:

- Aprox 40 yrds worsted weight cotton yarn
- Size 9 (5.5mm) needles (or size needed to obtain) gauge
- Stitch markers if desired
- Yarn needle



Directions:

Cast on 33 stitches

Knit 4 rows

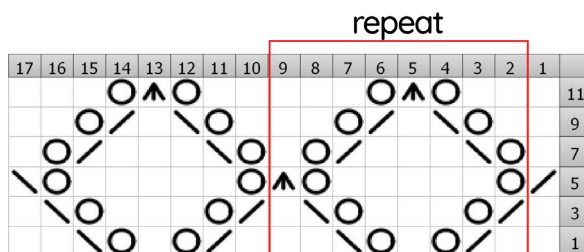
Knit chart 3 times.

**Knitting first 4 and last 4 stitches of each row (Garter stitch border)

**Purl all even rows (with garter stitch border)

Knit 4 rows.

Bind off all stitches.



Key:

- ☐ Knit (K)
- ☒ Knit two together (K2tog)
- ☒ Yarn Over (YO)
- ☒ Slip, Slip, Knit (SSK)
- ☒ Centered Double Decrease (CDD)

Written Chart Instructions:

Row 1: K5, (K1, k2tog, yo, k1, yo, ssk, k2) twice, K1, k2tog, yo, k1, yo, ssk, k2

Row 2 (and all even rows) K4, P25, K4

Row 3: K5, (k2tog, yo, k3, yo, ssk, k1) twice, k2tog, yo, k3, yo, ssk, k5

Row 5: K4, k2tog, (yo, k5, yo, cdd) twice, yo, k5, yo, ssk, K4

Row 7: K5, (yo, ssk, k3, k2tog, yo, k1) twice, yo, ssk, k3, k2tog, yo, k5

Row 9: k5, (K1, yo, ssk, k1, k2tog, yo, k2) twice, K1, yo, ssk, k1, k2tog, yo, k6

Row 11: K5, (k2, yo, cdd, yo, k3) twice, K2, yo, cdd, yo, k7

Just for Fun

Solve the secret code puzzle to find out what Dawn thinks of knitting lace.

(you know you want to)

| | | | | | | | | | | | | |
|----------|----------|----------|----------|----------|----------|----------|----------|----------|----------|----------|----------|----------|
| A | B | C | D | E | F | G | H | I | J | K | L | M |
| ↶ | ↷ | ↵ | ↔ | ↕ | ← | → | ↑ | ↓ | ↶ | ↷ | ↶ | ↷ |
| N | O | P | Q | R | S | T | U | V | W | X | Y | Z |
| ↔ | ↕ | ↶ | ↷ | ↶ | ↷ | ^ | ~ | △ | ▷ | ⬆ | ⬇ | ⬇ |

↶ ↷ ↵ ^ ^ ↕ ↔ → ↶ ↷ ↵ ↕
 ↕ ~ ↶ ~ ↕ ~ ↶ ~ ↕ ↕ ↕

