

Human Anatomy & Physiology I

Lab 6 Overview of bones & the axial skeleton

Lab exercises 6.1

The instructor will provide you with several bones from the human body. For each one, identify which shape category it belongs to and give the reasons why it belongs to that category.

Bone	Shape category	Reasons for categorization
------	----------------	----------------------------

1.

2.

3.

4.

5.

6.

Lab exercises 6.2

The instructor will provide you with a plastic model of enlarged bone tissue. Find all the following items in the model and be prepared to point out any three to the instructor on their request.

compact bone
central canal
trabecular

spongy bone
perforating canal
periosteum

lacuna
lamella
endosteum

canaliculum
circumferential lamella
bone marrow

Lab exercises 6.3

The instructor will provide you with several bones from the human body. Using the bones provided, put the appropriate numbered sticker on a bone marking that fits into each of the following categories.

1. Tubercle
3. Head
7. Trochanter
10. Meatus

2. Condyle.
4. Neck
8. Spine
11. Foramen

3. Epicondyle
6. Ramus
9. Crest
13. Fissure.

Lab exercises 6.4

The instructor will provide you with a model of the human skull. On the model and on the diagrams below, be able to label all the following bones, processes, and foramina:

Bones

B1 – frontal
B2 – parietal
B3 – occipital
B4 – temporal
B5 – sphenoid
B6 – ethmoid
B7 – lacrimal
B8 – nasal
B9 – maxilla
B10 – zygomatic
B11 – mandible
B12 – vomer
B13 – palatine

Sutures

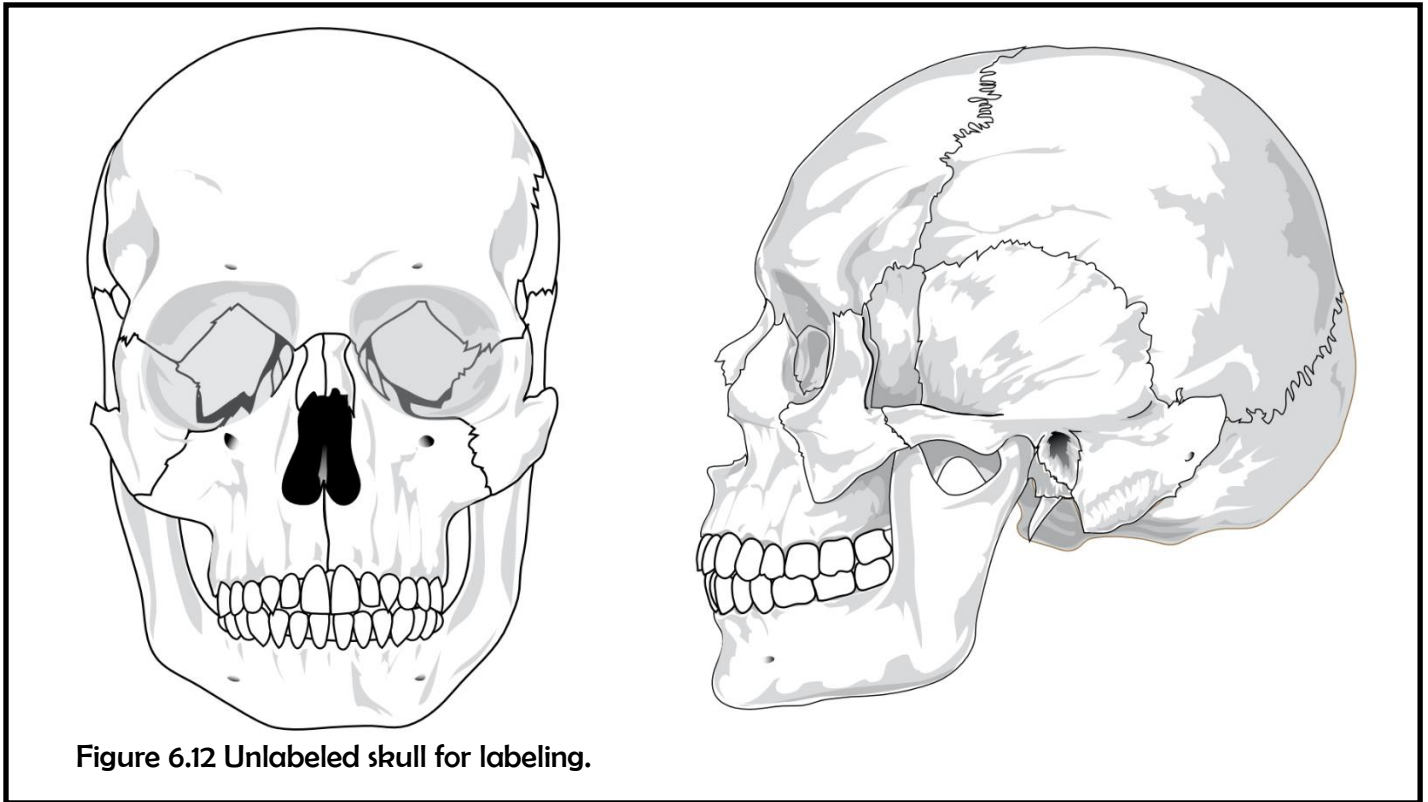
S1 – coronal
S2 – squamous
S3 – lambdoid

Foramina

F1 – supraorbital
F2 – infraorbital
F3 – mental

Processes

P1 – mastoid
P2 – styloid
P3 – zygomatic
P4 – tempoar



Lab exercises 6.5

1. The instructor will provide you with either real or replica vertebrae bones. Identify which in your group are the atlas, axis, cervical vertebrae, thoracic vertebrae, and lumbar vertebrae.
2. Stack your vertebrae in the correct order and in the correct orientation.