

Guided Pathways 101



Tuesday, May 21, 2019

SUNY Guided Pathways Institutes Cohort II

Introductions

Renee Dimino

Associate Professor of Transitional Studies and College Success Program Coordinator

SUNY Guided Pathways Institutes Project Director

Monroe Community College

Jess Wilkie

Associate Professor, English (including ALP)

SUNY Guided Pathways cohort II Lead Coach

Monroe Community College

Team Facilitators' Learning Sessions Series

May: Guided Pathways 101

June: Establishing your “home team” / institute #1 early preview

July: Project Management and facilitating team meetings

July: Key Performance Indicator Reporting (for Data Contacts)

August: Campus Engagement

September: Project resources and institute #1 overview

Look for invitations to each session from Renee soon.

Today's Session

- Why guided pathways?
- How did we get here?
- What is guided pathways?

Why Guided Pathways?



Why guided pathways?

What we know after more than a decade of reform....

- *The proportion of community college students completing community college and earning a credential has not changed*
- *Every college is perfectly designed to produce precisely the results it is currently getting*
- *Challenges in institutional transformation – Institutions not prepared to restructure*
- *Demographic and economic changes – Declining enrollment and declining state appropriation*
- *Culture change vital to implementation and sustainability – Culture trumps strategy every time*

From Community College Research Center



New Students Want to Know...

- What are the education paths to my desired career?
- What will I need to take?
- How long will it take and how much will it cost?
- How much financial aid can I get?
- Will my credits transfer?

From Community College Research Center

Returning Students Want to Know...

- How far along am I toward completing my program? Am I on-schedule?
- How much more will I have to pay?
- What will I need to take next term and what will my schedule be?
- What if I want to change programs?
- How can I get work experience in my field of interest?

From Community College Research Center

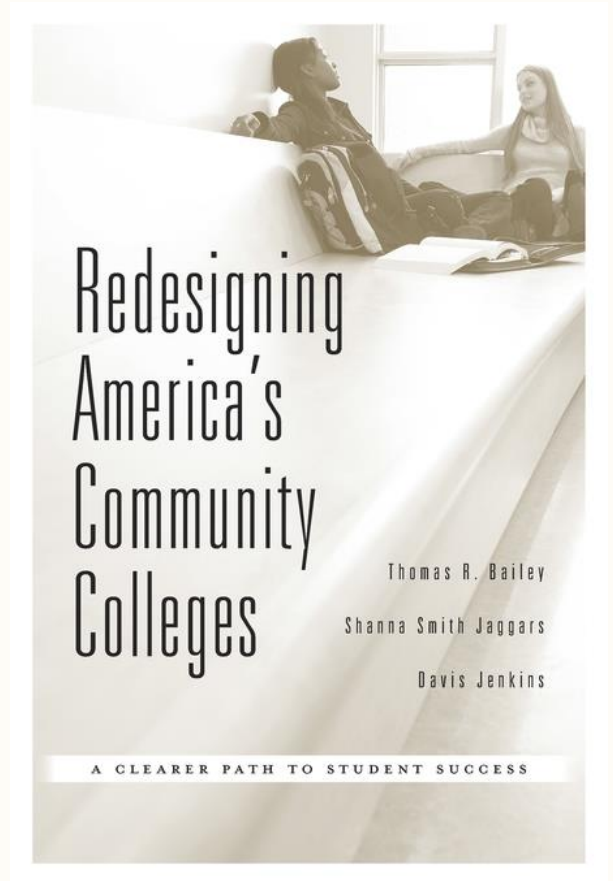
What is guided pathways?



The Foundation

Research-based reform developed by national experts including the Community College Research Center (CCRC) and work with colleges by Completion by Design, NCII, AACC, ATD and others

Although this reform began in the community college sector, an increasing number of 4-year institutions are adopting it.



“The idea behind guided pathways is straightforward. College students are more likely to complete a degree in a timely fashion if they choose a program and develop an academic plan early on, have a clear road map of the courses they need to take to complete a credential, and receive guidance and support to help them stay on plan.”

Bailey, Thomas, Shanna Smith Jaggars, Davis Jenkins. 2015. “What We Know About Guided Pathways.” New York, NY: Community College Research Center.

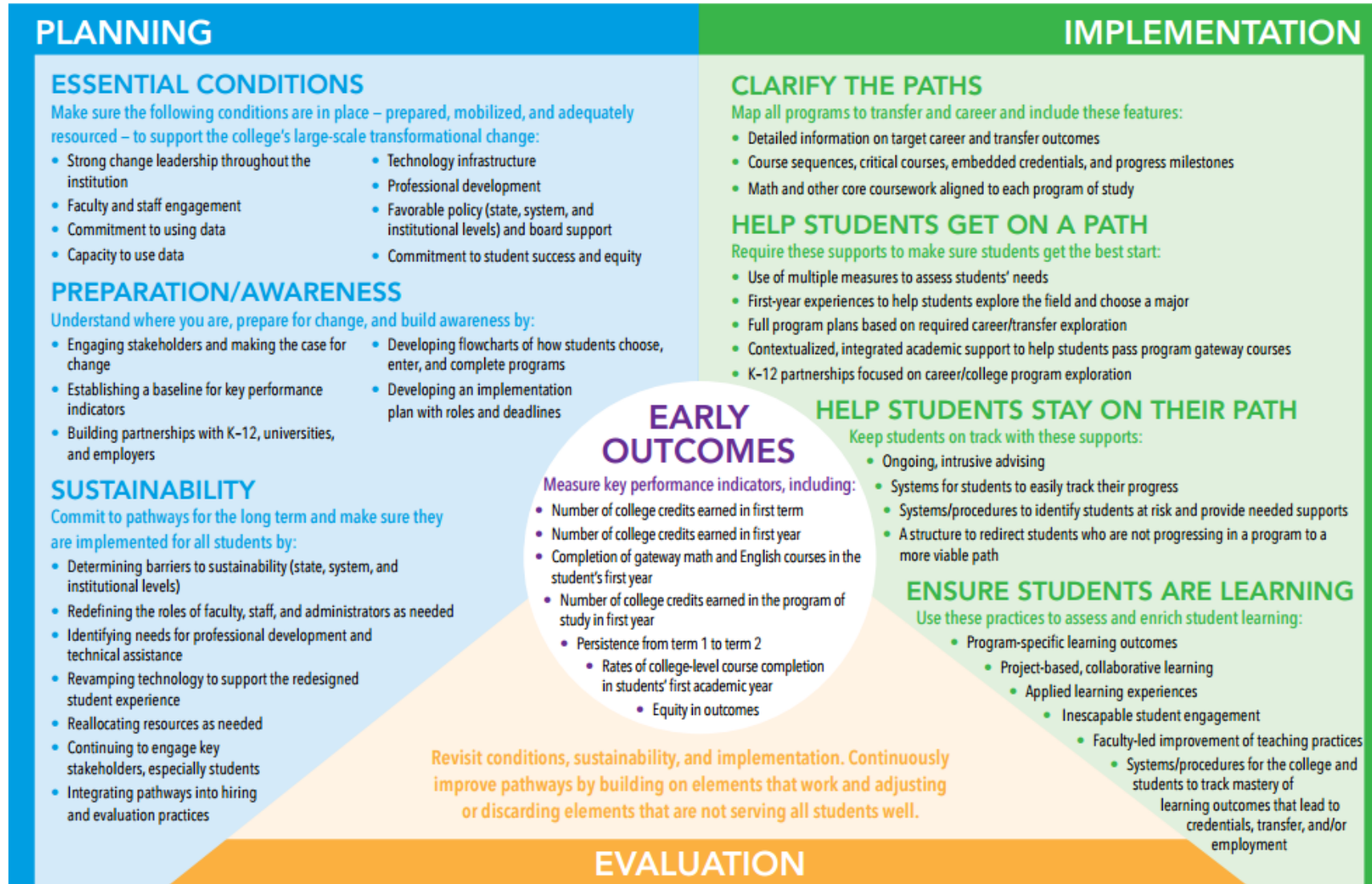
<http://ccrc.tc.columbia.edu/publications/what-we-know-about-guided-pathways-packet.html>





Guided Pathways: Planning, Implementation, Evaluation

Creating guided pathways requires managing and sustaining large-scale transformational change. The work begins with thorough planning, continues through consistent implementation, and depends on ongoing evaluation. **The goals are to improve rates of college completion, transfer, and attainment of jobs with value in the labor market — and to achieve equity in those outcomes.**



The guided pathways Pillars

Clarify the Paths

Help Students get on a Path

Help Students Stay on their Path

Ensure Students are Learning

CLARIFY THE PATHS

Map all programs to transfer and career and include these features:

- Detailed information on target career and transfer outcomes
- Course sequences, critical courses, embedded credentials, and progress milestones
- Math and other core coursework aligned to each program of study

HELP STUDENTS GET ON A PATH

Require these supports to make sure students get the best start:

- Use of multiple measures to assess students' needs
- First-year experiences to help students explore the field and choose a major
- Full program plans based on required career/transfer exploration
- Contextualized, integrated academic support to help students pass program gateway courses
- K-12 partnerships focused on career/college program exploration

HELP STUDENTS STAY ON THEIR PATH

Keep students on track with these supports:

- Ongoing, intrusive advising
- Systems for students to easily track their progress
- Systems/procedures to identify students at risk and provide needed supports
- A structure to redirect students who are not progressing in a program to a more viable path

ENSURE STUDENTS ARE LEARNING

Use these practices to assess and enrich student learning:

- Program-specific learning outcomes
 - Project-based, collaborative learning
 - Applied learning experiences
 - Inescapable student engagement
 - Faculty-led improvement of teaching practices
 - Systems/procedures for the college and students to track mastery of learning outcomes that lead to credentials, transfer, and/or employment

Guided pathways is not:

- A detailed checklist/set of instructions/big box program
- Implemented the same ways at every college
- A way to standardize SUNY community colleges
- An excuse/reason for eliminating programs or positions

Guided pathways is:

- A framework
- A way to focus cultural change
- A way to think about solutions to problems that already exist at your institution
- Data-driven
- Tested
- Worth the effort

Getting to SUNY Guided
Pathways Institutes
cohort II



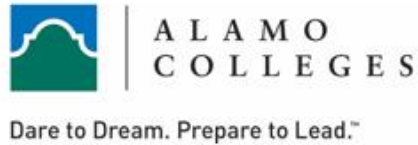
Getting to SUNY Guided Pathways Institutes cohort II



PATHWAYS PARTNERS



AACC Pathways Project Colleges



SUNY Guided Pathways

Cohort I

- 6 institutes, March 2018-June 2019
- 10 SUNY community colleges
- State coaches assisting teams
- Alumni network taking shape

SUNY Guided Pathways

Cohort II

- 5 institutes, October 2019-October 2021
- Webinars focused on discrete facets of the project and on guided pathways implementation elements
- 7 new community colleges, cohort I colleges returning at varying levels
- State coaches assisting teams
- Alumni network will incorporate cohort II

Questions?



Thank You!

Have more questions?

Renee Dimino, SUNY Guided Pathways Project Director, Associate Professor of Transitional Studies at Monroe Community College

(585) 292-3134

rdimino@monroecc.edu

Jess Wilkie, Cohort II Lead Coach, Associate Professor of English at Monroe Community College

(585) 685-6342

jwilkie@monroecc.edu