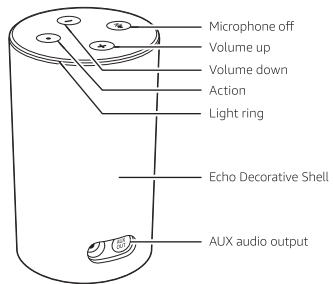


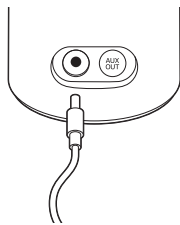
## Getting to know Echo



Also included: Power adaptor

## 1. Plug in Echo

Plug the power adaptor into Echo and then into an electrical socket. You must use the items included in the original Echo package for optimal performance. A blue light ring will begin to spin around the top. In about a minute, the light ring will change to orange and Alexa will greet you.



## 2. Download the Alexa App

Download the Alexa App from the app store.

The app helps you get more out of your Echo. It's where you manage your music, lists, settings and news.

You can also start the setup process from your computer browser at <https://alexa.amazon.com.au>.

If the setup process does not automatically start, go to Settings > Set up a new device.

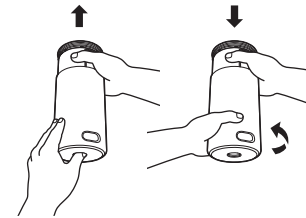
During setup, you will connect your Echo to the Internet, so you can access Amazon services. Please make sure you have your Wi-Fi password.

To learn more about Echo, go to Help in the Alexa App.

## 3. Change your Echo Decorative Shell

To remove the Echo Decorative Shell, unplug the power adaptor from your device, press and hold the button on the bottom of the device and then slide the Echo Decorative Shell off.

To put the Echo Decorative Shell back on, put the cover on the device and gently turn it until it snaps into place.



## Getting started with Echo

### Where to put your Echo

Echo works best when placed in a central location, at least twenty centimetres from any walls. You can put Echo in a variety of places—on a kitchen counter, the coffee table in your living room or a bedside table.

### Talking to Echo

To get the attention of your Echo, simply say "Alexa".

### Give us your feedback

Alexa will improve over time, with new features and ways to get things done. We want to hear about your experiences. Use the Alexa App to send us feedback or visit [www.amazon.com/devicesupport](http://www.amazon.com/devicesupport).