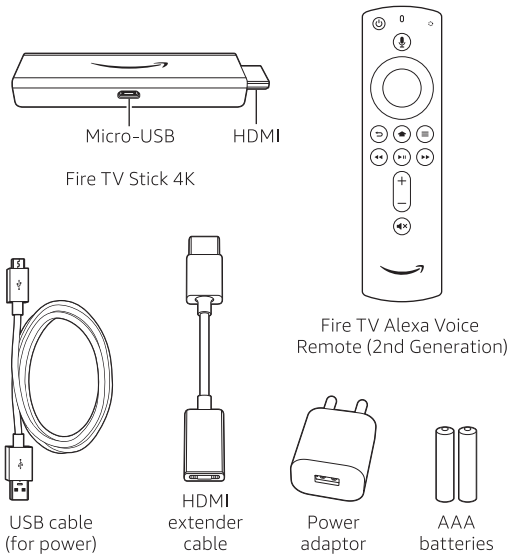


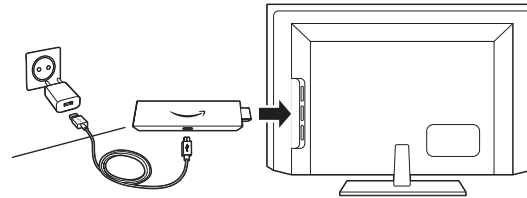
What's in the box



1. Connect your Amazon Fire TV Stick 4K

Connect one end of the USB cable to your Amazon Fire TV Stick 4K and the other end to the power adaptor. Plug your Fire TV Stick 4K into the HDMI port on your TV and then plug the power adaptor into a nearby electrical socket. Turn on your TV and then select the appropriate HDMI input.

For 4K streaming, connect the Fire TV Stick 4K to an HDMI HDCP 2.2 port on your 4K TV.

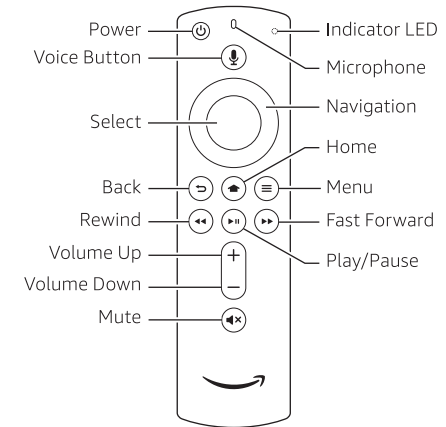


Use the included HDMI extender to improve Wi-Fi and remote performance, or if you have trouble fitting your Fire TV Stick 4K into an HDMI port on your TV.



2. Power up your Alexa Voice Remote

1. Open the back of the remote and insert the included batteries.
2. After pairing your Alexa Voice Remote, follow the on-screen instructions to control the power and volume of your TV.



3. Complete the on-screen setup

Using your Alexa Voice Remote, follow the on-screen instructions.

- Choose your language from the list.
- Select your Wi-Fi network from the networks displayed on the screen.

Note: If your Wi-Fi network is password-protected, have your Wi-Fi network password handy to connect your Fire TV Stick 4K to the Internet. If your network is hidden, select the "Join Other Network" tile from the list. If required, enter your network password using the on-screen keyboard.

Registering your Fire TV Stick 4K

If you purchased your Fire TV Stick 4K online from Amazon.in using your Amazon account, it is already registered to you. If you received your Fire TV Stick 4K as a gift or it is not yet registered, please follow the on-screen instructions to register your device.

Tips and troubleshooting

Wi-Fi

- Use the 5 GHz band on your wireless router if available for best Wi-Fi performance.
- If you see a lock icon, your Wi-Fi network requires a password, so make sure you have it available.
- If you need help finding your Wi-Fi password, go to www.amazon.com/wifi.
- Ensure your Internet connection is working properly. Restarting your router and modem will solve most Wi-Fi network issues.
- Do not place your wireless router or Amazon Fire TV Stick 4K in a cabinet, as it may impact Wi-Fi signal strength.
- Some Wi-Fi issues may be improved by connecting the included HDMI extender.

Remote pairing

Having trouble with your remote? First, remove and reinsert the batteries in your remote. The remote should automatically pair with your device. If your remote isn't discovered, press and hold the Home button until the LED starts to rapidly flash amber.

For more troubleshooting and information, go to www.amazon.com/devicesupport

Get the most out of your Fire TV Stick 4K

About your Alexa Voice Remote

Simply press and hold the Voice button and speak. You can search for movies, TV shows, actors and directors. Just say "Launch Netflix" to launch the Netflix app or "Play Tom Clancy's Jack Ryan".

Even better with Amazon Prime

Amazon Prime members get unlimited access to thousands of movies and TV episodes with Prime Video, including award-winning originals. Get millions of songs with Prime Music. Easily access Prime content from your Home screen.

Content you love

Watch all your favourites from Netflix, Hotstar, Prime Video, and Sony LIV—plus access live news and sports, as well as millions of websites like YouTube, Facebook and Reddit.