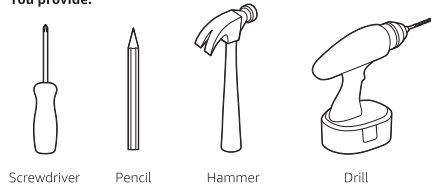


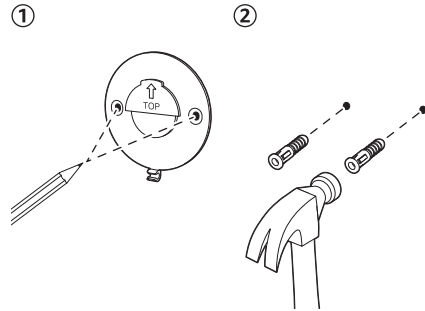
Wall Mounting

You will need the following tools to complete wall mounting.

You provide:

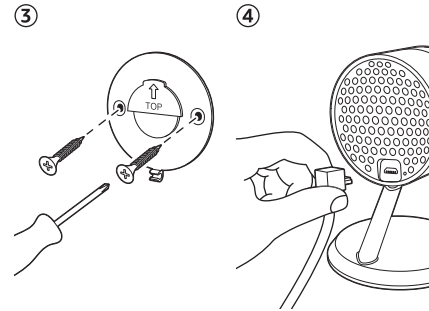


In box:



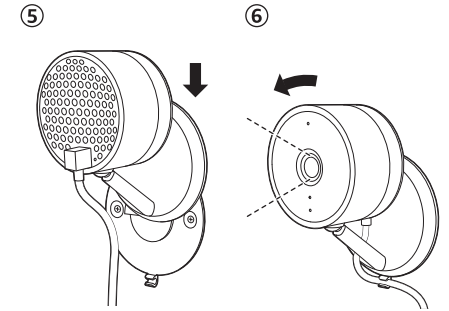
Find a wall placement location within reach of a power outlet. Position the mounting plate on the wall with the arrow pointing up. Using a pencil, mark the location of both holes.

Using a 3/16" drill bit, pre-drill holes into the wall. Gently hammer each anchor into the holes.



Align the wall plate with the anchors and screw each screw into the anchors. Make sure the arrow is still pointing up and the screws are flush with the wall plate.

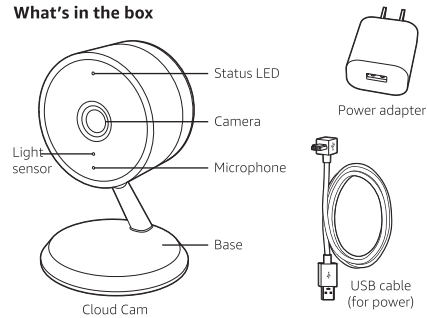
Plug the cable into the power port and the power adapter, then into a power outlet.



Slide the device base over the wall mounting plate using the arrow as a guide.

Rotate your device so that the camera faces the desired viewing area while using the Live View feature in the app. Attach the cable to the cable catch on the wall mount.

What's in the box



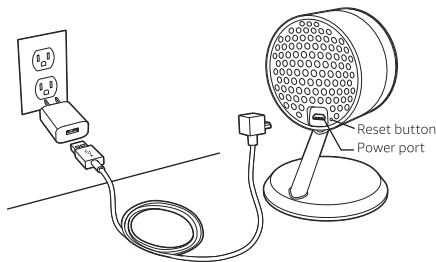
Optional (for mounting)



1. Plug in your Cloud Cam

Plug the cable into the power port and the power adapter, then into a power outlet. The LED will pulse between blue and green when your Cloud Cam is ready for set up.

After 5 minutes, if the LED is not pulsing between blue and green, then use a paper clip to press the reset button for 5 seconds.



2. Setup using the Cloud Cam app

Download the Cloud Cam App from the iOS App Store, the Google Play Store, or the Amazon Appstore. The app is where you can view your camera's live stream, watch event videos, and talk or listen through your camera's mic and speaker.

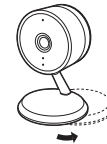
Upon opening the app, you will be prompted to sign in to your Amazon account. After signing in, you can begin the setup process.

The Cloud Cam app enables you to manage your camera settings and customize your experience.

- Use Live View to determine the best location for your camera based on the part of the room you would like to monitor.
- Customize the type of notifications that you want to receive in Settings.
- For information on changing your Wi-Fi network, resetting your device, or troubleshooting your device, go to Help in the Cloud Cam app.

3. Position your Cloud Cam

When free standing, your Cloud Cam can be pointed straight ahead, up, or down. To angle the Cloud Cam up, twist the base of the device 180 degrees.



Note: If you would like to mount Cloud Cam to a wall, see the included mounting instructions.