



HSL16-LM-S-60-BLP-XD

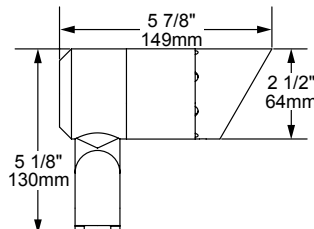


HSL16-LM-R-60-NAT

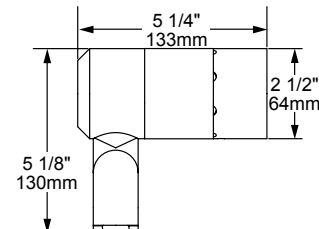
The HSL16-LM Telluride, the flagship directional from Auroralight, utilizes our Thermally Integrated™ Interchangeable LED Module coupled to an all brass body. This union provides superior heat dissipation critical for long life and high performance. The HSL16 includes our Storm Drain™ lens drainage allowing water and dirt to wash away for optimal light transmission. The HSL16 is versatile with over 600 lumens; it has the power to illuminate large-sized trees or, at just 3w, cast subdued light on low shrubbery. Like all our directionals, the Telluride features the Aurora Mount System (AMS™), which provides 360° of fixture rotation on over 12 unique mounting devices for precise aiming without compromising wire integrity.

Features include:

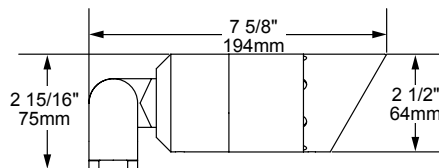
- Interchangeable LED Module in 4, 6, 8 or 12 Watts up to 621 Lumens Delivered
- 6 Interchangeable PMMA Acrylic Optics
- 2700K (80 & 90 CRI) or 3000K (80 CRI)
- Thermally Integrated® w/ Copper Core Technology®
- Storm Drain™ Lens Drainage System
- Aurora Mount System (AMS™) Compatible
- 12V Integral Constant Current Driver (Remote 12V AC/DC Transformer Required)
- Dimmable to <10% (TRIAC/Forward Phase) via Compatible Transformer
- Compatible w/ 12V AC/DC MLV or ELV Transformers
- Solid Brass Construction



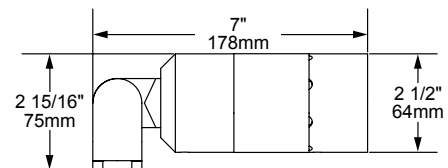
HSL16-S w/ 60° Angled Shroud



HSL16-S w/ 90° Straight Shroud



HSL16-R w/ 60° Angled Shroud

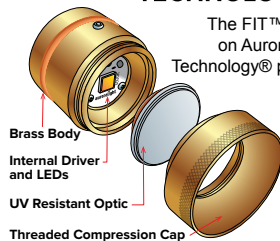


HSL16-R w/ 90° Straight Shroud



FIELD-INTERCHANGEABLE TECHNOLOGY

The FIT™ IP67 module is built on Auroralight's Copper Core Technology® platform and includes FIT™ Acrylic Optics.

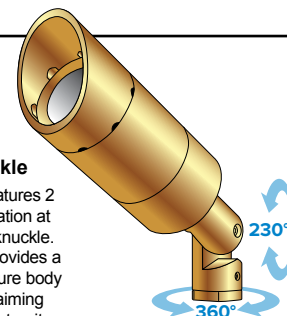
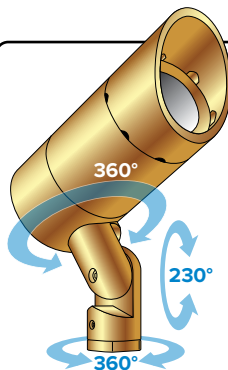


COPPER CORE TECHNOLOGY.



Side Knuckle vs Rear Knuckle

The Aurora Mount System (AMS™) features 2 axis of adjustment – 360° of fixture rotation at the mount and 230° at the solid brass knuckle. When paired with a side knuckle, this provides a 3rd axis of adjustment, up to 360° of fixture body rotation, for the ultimate in precision aiming without twisting or compromising wire integrity.



12V



SEE NEXT PAGE FOR ORDERING INFORMATION



HSL16-LM TELLURIDE



HSL16-LM-R-60-NAT



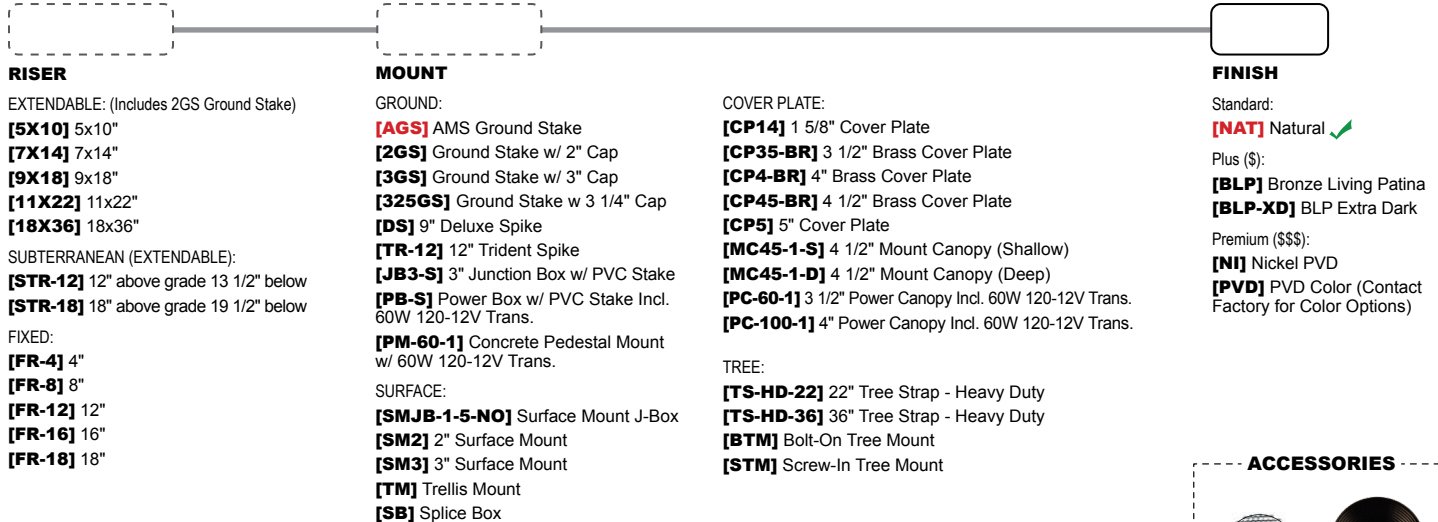
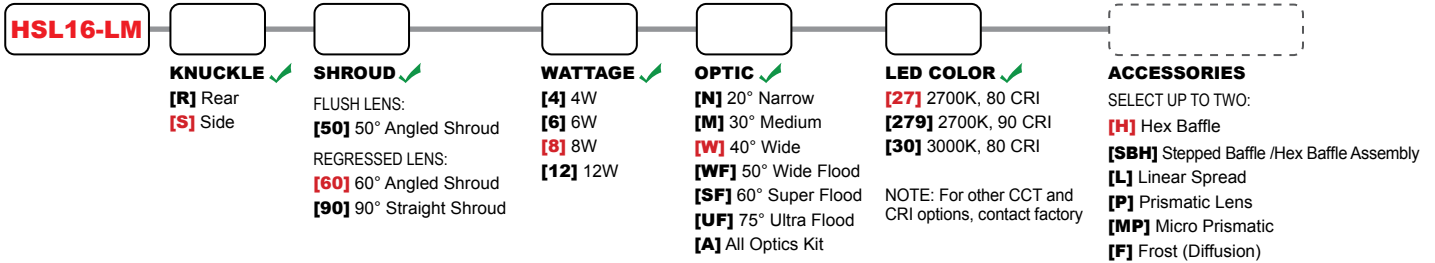
HSL16-LM-S-60-BLP-XD

For smaller wattage and size options see **HSL20-LM**, **HSL11-LM**, **LSL10**, and **LSL8**
 For larger wattage and size options see **LSL4**
 For retrofit lamp options see **HSL20-X**, **HSL16-X** and **SLX16**

ORDERING GUIDE: HSL16-LM ^{Prefix} H (HIGH PERFORMANCE) SL (SPOTLIGHT) 16 (SERIES) L (LED) M (MODULE)

INDICATES REQUIRED FIELD INDICATES OPTIONAL FIELD INCLUDED [_] QUICK SPEC (See Below)

QUICK SPEC SKU HSL16-LM-S-60-8-W-27-H-AGS-NAT



NOTE: Universal Adapter Included w/ Fixture. Most common configurations listed above. See product cut sheets for all options.

