

Thousands To View Parade

Axe Show Satirizes Cal Life

By Mike Abramson

When the curtain goes up on the annual Axe-travaganza tonight in the Gymnasium for Men, Californians will really get the inside dope on how Life magazine covered the campus a few weeks ago.

The show, which goes on at 9 p.m., will depict the magazine reporters and cameramen in a mad scurry about the campus and give quite an insight into the everyday lives of some of the more prominent University figures.

Curtain time for the Axe-travaganza is 9 p.m. today as previously reported in the Daily Californian. The time printed on Axe-travaganza tickets, 8 p.m., is in error.

A musical overture by Russ Bennett and his CBS orchestra will get the evening's entertainment under way. A Life executive, played by Vic Schwartz, a young reporter, Roger Vaughn, and the office girl, Tony Brancato, let the audience in on the plans for Operation University as they are seen in the Rockefeller Center office of the magazine.

Quickly flashing across the country, the Lifemen are again seen in the President's campus mansion. It is then that President Robert Gor-

(Continued on Page 7)



Homecoming Queen 'LIZ DENNISON is shown holding the trophy presented her by Coach LYNN "Pappy" WALDORF yesterday when she was formally crowned on the Campanile steps. Her Majesty and her four attendants, BEVERLY BIRBECK, SUE HOWELL, HELEN MARINONI and MARGE PLOSSER, will be presented in the parade and at the Axe-travaganza today and at the Big Game and Big Game dance.

—Lee Brill Photo.

Bands, Floats Form Big Bear Caravan

The Big Bear Bandwagon rolls to-night.

Several thousand students and Berkeley residents are expected to jam downtown streets early this evening to watch the Homecoming parade and enter into the spirit of Big Game weekend.

Grand Marshals President Robert Gordon Sproul and Fleet Adm. Chester W. Nimitz, preceded by a police and fire department escort, will lead off the parade from Virginia street and Shattuck avenue at 5:45 p.m.

Bands, floats and marching units will parade down Shattuck avenue to Durant avenue, up Durant avenue to College avenue, turn left and march past the reviewing stand at College avenue and Bancroft way, up the hill to Piedmont avenue and finally north on Piedmont avenue past International house to the area north of Memorial stadium, where the parade will disband.

Living groups and ASUC organizations have entered 85 floats in competition for prizes in humor and beauty divisions. As the parade passes the spotlighted reviewing stand, John Vukasin, Homecoming radio committee co-chairman, will describe entries over a public address system.

Yesterday Homecoming Queen Liz Dennison selected at random two series of numbers which were checked against an ASUC card list. Students Wayne Fogleong and Carolee Luedtke, whose ASUC cards matched the numbers, will help judge the parade.

Other judges will be Fred Stripp, lecturer in speech; Chaffee Hall, Jr., advisor for men; Ruth N. Donnelly, housing supervisor; John D. Hicks, Morrison professor of history; William B. McCoard, assistant professor of speech, and Ed Welch, director of ASUC activities.

The Cal and Concord Redmen bands will appear, as will Oski, cavorting Bear mascot.

Parade Chairman Kermit Dorius has ordered floats to be in position by 3:45 p.m. Any group which does not receive detailed instructions by this afternoon's mail is requested to pick them up in 215 Stephens Union. Units will line up in three divisions on Virginia, Francisco and Delaware streets west of Shattuck avenue.

The queen, accompanied by ASUC President Jack Andrew and Homecoming General Chairman Jim Doyaras, will follow Grand Marshals

ASUC and registration cards must be presented at the Memorial Stadium gates to gain admission to the Big Game rooting section. Ticket Sales Manager George Briggs reminded students yesterday.

Sproul and Nimitz and Her Majesty's attendants will follow in the next car.

Richard Smith, '78, and Charles Stewart, '84, will be honored as the University's two oldest living alumni able to attend Homecoming celebrations. The California crew will once again be honored as Olympic and world champions when they pass in review.

Wood from the dismantled floats will be piled at the disbanding point in anticipation of an informal rally to be held after the Axe-travaganza.

Houses Ready To Be Judged On Decorations

Big Bear Bonanza house decorations will be judged from 10 a.m. to 3 p.m. today for prizes in either the beauty or humor classifications.

Each house can win up to 100 points divided as follows: originality, 25 points; workmanship, 25 points; overall appearance, 25 points; consistency with theme, 25 points.

Judging the house decorations will be Glenn Hughes, Art Honor society; Fred Stripp, lecturer in speech; Eugen Neuhaus, professor of art; Stephen Pepper, chairman of the art department, and Michael B. Goodman, professor of architecture.

The deadline for having decorations completed is 9 a.m. today.

House decorations chairman Carney Campion has asked living groups not to take down their decorations until after the Big Game.

Bob Crosby To Star at Dance

Bob Crosby and Margaret Whiting, two of the biggest names in the American dance band business, will be on the bandstand at the Big Game dance tomorrow night.

Crosby and his Club 15 orchestra will furnish dance music for celebrating alumni and undergraduates from 9 p.m. to 1 a.m. in the Gymnasium for Men.

During intermission periods Miss Whiting will entertain with famous songs she has recorded and Crosby will present specialty numbers.

Crosby recently completed a cross-country tour of the nation's dance spots. He is perhaps best known for his hot jazz organization of former years, the Bobcats. Among his recordings are "South Rampart Street Parade" and "Big Noise from Winnetka" which featured two of his side-men.

Miss Whiting has been featured vocalist on the Eddie Cantor and Supper club radio shows and has sung and

Tickets for the Big Game dance tomorrow night are on sale in the ASUC box office in the Stephens Union book store. Tickets are \$3 a couple and attendance will be limited.

recorded popular numbers with the country's leading bands.

During the war, the shapely blonde vocalist made friends with many

servicemen on USO tours and through V-disk recordings. Undergraduates will remember her performance at last year's Homecoming dance.

"We have set a definite limit on the number of tickets to be sold," Dick Bussey, dance chairman, said yesterday. Bussey emphasized that "there will be plenty of room for dancing" and that there is no possibility of the overcrowded conditions of some former Homecoming dances recurring.

A decoration committee headed by Mo Plant and June Wightman has promised that the gym will be fully decorated in line with Homecoming's Big Bear Bonanza theme. Center of attraction will be a replica of the Campanile. A pictorial cavalcade of classes painted in blue and gold will adorn the walls.

Extra Daily Cals

Each living group on the Daily Californian delivery list will receive extra copies of the Homecoming edition today, for distribution to visiting alumni.

Calendar

TODAY

Judging of house decorations, 10 a.m. to 3 p.m.

Homecoming parade begins at 5:45 p.m., Virginia street and Shattuck avenue.

Axe-travaganza, 9 p.m., Gymnasium for Men.

TOMORROW

Big Game, 2 p.m., Memorial stadium.

Big Game dance, 9 p.m. to 2 a.m., Gymnasium for Men. Special 3:30 a.m. lockout.

MONDAY

Finance committee, 4 p.m., Alumni room, Stephens Union.

Executive committee, 7:30 p.m., Alumni room, Stephens Union.

Bearlettes Squash Squaws

By Jeannie Hamilton and Fred Herman

The following "sports" story is an account of the biggest Big Game of the year, as reported by two Daily Californian staff members who were hit on the heads by a football while crossing Eshleman court at noon. (This game was part of Homecoming week events.)

ESHLEMAN COURT BOWL, Nov. 18—California's Golden Bearlettes romped triumphantly over the Stanford Squaws today to clinch their bid for the Shmoes' Bowl.

Overpowering the never-say-die Squaws, 7-0, before a record-breaking crowd of screaming and near-hysterical fans, the Bearlettes came from behind in the very last seconds to

win one of the most thrilling games this season.

Stanford marched the length of the court in the first stanza of this gridiron epic and led, 6-0, as the water gun went off ending the first quarter. The touchdown was made when Nancy Devine sneaked across the goal line from her quarterback slot. The conversion failed.

California's two Jumping Jacks, Jacqueline Swaner and Susie Jensen, played exceptionally fine ball. With less than three minutes to play in the last quarter, the famous signals of "one no-trump, two hearts, three spades" enabled the Bearlettes to waltz down the field.

The California touchdown was made when Jensen faded back for a

pass, was rushed, but finally got away a long, long aerial down center to Babs Van Deren on the Squaws' 15-yard line. Van Deren raced into the end-zone for a touchdown. The conversion was made by Lillie Main in a razzle-dazzle around the Bearlettes' right end.

Other California players who made a magnificent showing were Sandra Duncan, Barbara Celeri and Jean Cunningham. The Squaws line-up was highlighted by Maggie Rosenkrans, Emilie Mitchell and Lucy Anderson.

In other games this season the Bearlettes downed the everpowerful Vasser eleven, 2-0. The Squaws conquered their traditional rivals, the Mills College Chorus girls, 12-6.



You can't tell a rooster from a bleacher without a

White Shirt!

Roos has 'em for only

\$3.95

Row Bros
CALIFORNIA SHOPS

Communists Lose Suchow Battle

NANKING, China, Nov. 18 (UP)—Gen. Chiu Ching-Chuan's Nationalist forces routed 100,000 Chinese Communists in a four-hour battle early today within seven miles of Suchow, 200 miles northwest of Nanking, the semi-official Central News agency claimed.

The agency, in a dispatch from Suchow, said that 20,000 Reds were killed, wounded or captured and that large quantities of arms fell into government hands.

Five Communist columns totalling 100,000 troops were said to have advanced from the southeast under cover of darkness in an attempt to relieve Communist forces besieged by the Nationalists near Nienchuang, 33 miles east of Suchow.

They were intercepted by tanks and armored cars at Pantagchen, seven miles southwest of Suchow, at midnight and by 4 a.m. were seen fleeing southward "in disorder," the dispatch said.

Government planes continued round-the-clock bombing and strafing missions in the Suchow area and heavy artillery pounded Communist-held villages east of Suchow, other government reports said.

The government admitted the fall of Suhsien, 38 miles south of Suchow, claimed by the Communists two days ago. But, a government spokesman

said that Nationalists driving south from Suchow and north from Pengpu, about midway between Suchow and Nanking, were making "good progress" toward reopening the vital Suchow-Nanking railway.

"These government columns were expected to join forces at Suhsien momentarily," the spokesman said.

Hollington K. Tong, government information director, confirmed a Washington report that President

Chiang Kai-shek wrote personally to President Truman, but he said the Chinese government did not intend to publish the letter.

It was presumed here that Chiang asked Mr. Truman for a flat statement to check spreading rumors that the United States has decided to let the Nanking government fight its way out of the present economic and military chaos or bow to the Communists.

Rightist Coalition Government Sworn In By Greek King

ATHENS, GREECE, Nov. 18. (UP)—King Paul today swore in a new rightist coalition government headed by Premier Themistocles Sofoulis which immediately set to work to rejuvenate Greece's economy and press the civil war with the Communists.

The cabinet, composed of 13 Populists and 10 Liberals, appeared no stronger than Sofoulis' previous government which resigned last week in the face of opposition by a group of Liberals headed by Sophocles Venizelos.

Venizelos returned to the Liberal fold, with reservations, but received no cabinet post. The new government, in fact, was similar to the outgoing one except for minor switches which

brought in four new Populists and six new Liberals.

Sofoulis' Liberals took over the war ministry, but turned the air ministry over to the Populists in the most drastic change. The Liberals held the important ministry of public order and managed to get Populist leader Constantine Tsaldaris to substitute a Moderate, Panos Hadjipanos, as interior minister.

Speed Jet Tested

WASHINGTON, Nov. 18. (UP)—The Navy announced tonight it has successfully completed flight tests of a radically new "flying wing" jet fighter plane with a speed of "over 600 miles an hour."



DR. CHAIM WEIZMANN, president of Israel, is shown reviewing the Women's Auxiliary Forces on an inspection tour of his nation's army camps. His government claimed last night invading troops had been withdrawn from the Negev in compliance with U. N. demands.

The Palestine Situation

Israel Withdraws Forces in Negev

TEL AVIV, Israel, Nov. 18 (UP)—Israel made it clear tonight that she intends to keep the Negev desert area in southern Palestine and still comply with recommendations of the United Nations Security Council.

An official government reply to the Security Council's ultimatum said that Jewish "invading troops" had been withdrawn from the Negev but it was announced earlier that Israeli troops which were in the Negev before Oct. 14 will remain "in their positions," thus giving Israel control of virtually all the recently-acquired southern territory.

Jewish authorities were careful not to refuse flatly to give up the area, but their message to U.N. officials said Israel "understands that it is not the intention of the council to call for a withdrawal of forces from positions held before Oct. 14."

With this reservation, Israel will be able to "withdraw" troops from the Negev and still keep control of more than 20 strategic settlements taken over during their recent offensive against Arab forces there.

Britain Supports Bernadotte Plan

PARIS, Nov. 18. (UP)—Britain, without United States support and fighting both the Arabs and the Jews, formally proposed today that the 58-nation United Nations Political Committee endorse the Bernadotte plan for Palestine.

Britain's resolution urged the committee to ask full general assembly support for the plan, including provisions to give the strategic Negev to the Arabs, internationalize Jerusalem and set up a U.N. conciliation commission for the Holy Land.

Hector McNeil, British delegate, told the committee that the alternative to accepting the late Count Folke Bernadotte's proposals was a fight to the finish between Palestine Arabs and Jews.

He warned against inviting Jews and Arabs to negotiate directly toward reaching a settlement. This, he said, "will in fact be opening the way to a settlement imposed by a stronger party upon a weaker."

McNeil submitted the resolution alone after failing to persuade the United States to co-sponsor it. Observers believed the U.S. refusal meant Washington has abandoned its earlier unqualified support of the Bernadotte plan and would, at most, endorse only parts of it.

French Dock Strike Flares in Dunkerque

PARIS, Nov. 18. (UP)—The government tonight sent a strong force of soldiers and security guards into war-famed Dunkerque where 2,000 dock workers struck five days ahead of schedule and barricaded themselves behind the locked iron gates of the port.

A nationwide longshoremen's strike scheduled to paralyze all French ports next Monday was already effective at Dunkerque.

Strikers seized the port entrances and locked the iron gates put up by the Germans during the occupation. They reinforced them with barricades of wire and packing cases and pushed up freight cars from behind.

U.C.

GOOD LUCK BEARS

Livingston Bros.
GRANT AVENUE AT GEARY STREET

Now Available!
LIMITED SUPPLY
Floor Samples and
Demonstrator Machines
The new deluxe
1948
WOODSTOCK



REGULAR PRICE
\$155.00
(tax inc.)

20% off

REGULAR PRICE

(in accordance with Fair Trade Practice Act Feb. 26, 1948)

\$118.56 (tax inc.)

LIBERAL TERMS



OFFICE APPLIANCE COMPANY

569-16th St. - Oakland

FREE DEMONSTRATION

Call Hlgate 4-1511

Six-month guarantee

ORDER YOUR
IMPRINTED
CHRISTMAS
CARDS
NOW

Something different in cards
as advertised in
The New Yorker

DALIEL'S
2466 Telegraph Ave.

Labor—Little Hope for Union Reconciliation CIO Stands Firm

Trade Union Denounced

Dulles Made U.N. Chairman

PORTLAND, Ore., Nov. 19. (UP)—Top level CIO officials shrugged off the new AFL peace proposal tonight and made it clear that they saw little hope for an early reunion of the labor movement.

While formal action, if any, on the labor unity problem must await the

CIO convention next week, CIO leaders were not expecting any solution of the issues which split the labor movement into the AFL and CIO 13 years ago.

The AFL convention yesterday called for new efforts to bring the CIO affiliates into a unified federation. In recent years, there have been many futile conferences with that same objective.

Skeptically CIO leaders believed that there could be no reunion which did not destroy the existing CIO affiliates. And they saw no way of resolving the old, basic jurisdictional conflicts between the craft unions of the AFL and the industrial unions of the CIO.

CINCINNATI, Ohio, Nov. 18. (UP)—AFL President William Green tonight demanded that the CIO and British Trades Union Congress withdraw from the World Federation of Trades Unions which he called a "Communist fifth column."

Turning to the British fraternal delegates on the platform with him at the AFL's 67th convention here, Green shouted:

"The British Trades Union Congress and the representatives from this country should withdraw from that fifth column world federation of trade unions."

The American organization is the CIO, which is expected at its Portland, Ore., convention next week to

authorize withdrawal from the world organization if the British follow through with their recent threat to quit.

He said that evidence of the world's federation's Communist leanings is its failure to endorse and work for success of the Marshall plan in Europe. He said the AFL is ready to join with free trade unions of the world to form a new workers' federation free of Communists.

Earlier, Max Eastman told the convention that the United States must adopt a firmer diplomatic policy to halt and overthrow Russia's Soviet regime or be forced into a "stupid and blundering defensive war."

KEY WEST, Fla., Nov. 18. (UP)—President Harry S. Truman today reaffirmed his bipartisan foreign policy by appointing Republican John Foster Dulles Acting Chairman of the U. S. delegation at the United Nations' meeting in Paris.

The Dulles appointment was the first direct action taken by the President since his Nov. 2 election victory to demonstrate that "no politics" still is the basis of American foreign policy.

Dulles was Gov. Thomas E. Dewey's chief adviser on international affairs and had been generally expected to become secretary of state if the Republican presidential candidate had won.

Farm Bureau Adopts Eight New Measures

SACRAMENTO, Nov. 18. (UP)—The California Farm Bureau Federation closed its convention here today after adopting eight resolutions and recommending the appointment by the University of California of a director of research in the college of agriculture.

A resolution favoring state control of the vital central valley project was adopted. Asking the state water project authority to revive its study of means of transferring CVP control from the Federal Bureau of Reclamation to the state, the resolution also authorized an educational program by the federation toward securing the change.

Delegates also passed resolutions: Recommending control of irrigation and drainage facilities of a Bureau of Reclamation project be turned over to the water users when construction costs have been returned; Asking revision of the 160-acre limitation in the reclamation law;

Endorsing proposed legislation to make the Folsom dam on the American river part of the Central Valley project;

Recommending action to amend "undesirable features" of the state blind and aged pension initiative, proposition No. 4 passed by California voters in the last election;

Opposing the purchase of the federal farm labor camps by the state of California;

Favoring support of existing farmers' markets and the encouragement and extension of additional farmers' markets in California cities.

Wire Roundup

WASHINGTON, Nov. 18 (UP)—Formation of a Continental Air Command to strengthen U. S. defenses was announced by the Air Force today.

PARIS, Nov. 18 (UP)—The U. S. and Britain made clear tonight they will not let United Nations Secretary-General Trygve Lie play any role in solving the Berlin crisis at the present time, by meeting his request for information about Berlin's currency problems with silence.

OSLO, Norway, Nov. 18 (UP)—There will be no Nobel Peace Prize awarded in 1947, the Nobel committee of the Norwegian Parliament announced today.

WASHINGTON, Nov. 18 (UP)—The United States tonight announced an emergency aid program for China which will provide immediate food relief for 12,270,000 persons in seven major cities.

THE DAILY CALIFORNIAN

Published daily except Saturday and Sunday during the college year by the Associated Students of the University of California. Entered as second class matter on March 1, 1901, in the Post Office, Berkeley, California, under the act of March 3, 1879 \$2.25 a semester.

Night phones: AB 3-4814, 3-4815, 3-3464. Member of the California Newspaper Publishers Association, Inc. Member of the Associated Collegiate Press. Represented for national advertising by National Advertising Service, New York, Chicago, Boston, Los Angeles, San Francisco. Lederer, Street & Zeus, printers, Berkeley. Walter Fredrick, director of ASUC publications.

GUY CARRUTHERS Editor JACK SMITH Manager

Managing Editor, Jim Estes; City Editor, Betty Humphreys; Assistant Editor, Charlie Goodman; Assistant City Editor, Red Rosen; Sports Editor, Dave Kirby; Telegraph Editor, Jack Bih; Associate Sports Editor, Jim Dufur. Personnel Manager, Stuart d'Adolf; Asst. Editor, Fred Reichman; Advertising Manager, Bob Slate; Promotion Manager, Debra Duggins; Production Manager, Chris Bothwell; Survey Director, Jerry Morehouse.

Look right, be right- **Roos** knows the campus!

Hold your coat?



Look right, be right- **Roos Bros** knows the campus!

Telegraph Avenue near Sather Gate

Church Notices

CANTERBURY FOR EPISCOPAL STUDENTS: Noon today, Bancroft way and Ellsworth street. Discussion. Bring or buy lunch. All students invited.

CHINESE CHURCH GROUP: 7:45 p.m. today, Berkeley First Congregational church, Dana street and Channing way. Movies will be shown. "Letter From China," a technicolor film taken at Fuchow; "Beyond Our Own," with full dialogue in English and Cantonese; "Simon Peter" and a sports film on basketball are included.

The public is welcome. A freewill offering will be taken for support of the church and for contribution to missionary work in China, after defraying expenses.

CHANNING CLUB: 10:45 a. m. Sunday, First Unitarian church, Bancroft way and Dana street. Thanksgiving service, with a joint sharing of a special music program by the congregation of Beth El and the Unitarian group. Inter-faith service. Rabbi Leo Trepp will give the common prayer and the Rev. J. Raymond Cope will preach on "Thanksgiving and the American Tradition."

EPWORTH CLUB: 5:45 p.m. Sunday, 2516 Durant avenue. Missionary program.

HILLEL FOUNDATION: 7:30 p.m.

and 8:15 p.m. today, 2736 Bancroft way. Orthodox services at the earlier hour, liberal services following. At the liberal services Rabbi William Sajowitz will preach on "Bargaining With God."

8 p.m. Sunday. Evening forum. Beatrice Goldman will give her impressions of Europe, followed by the weekly dance.

CANTERBURY FOR EPISCOPAL STUDENTS: 3 p.m. Sunday, St. Mark's Episcopal church, 2314 Bancroft way. Meet to leave for Grace cathedral in San Francisco to hear the Rev. Charles W. Carnan Jr., at 6 p.m. Supper and meeting.

LUTHERAN STUDENT CENTER: Noon, today, 2311 Bowditch street. Morris Wee, executive secretary of the Student Service commission of the National Lutheran council, will speak.

PLYMOUTH HOUSE: 8:30 p.m. today, Dana street and Durant avenue. Big Game party.

6 p.m. Sunday. Joint meeting with Wesley foundation in the chapel.

WESLEY FOUNDATION: 6 p. m. Sunday, at First Congregational church, 2345 Channing way. Norman Corwin's "Psalm for a Dark Year," will be presented.

7 p.m. tomorrow in Trinity hall, Bancroft and Dana. Traditional banquet and party with Stanford Wesleyans. Harvest moon theme, with square and folk dancing.

**FIRST
Congregational**

Dana and Durant

9:50 and 10:50 A.M.

ACCENT THE POSITIVE

Dr. Vere V. Loper, Minister

MUSIC BY CHANCEL CHOIR

Charles Black, Organist

**TRINITY
METHODIST CHURCH**

Dana & Durant

•

SUNDAY MORNING WORSHIP

Nov. 21, 11:00 a.m.

•

Sermon by
F. MARION SMITH, D.D., Minister

"WHAT ON EARTH
IS GOD DOING?"

**CHRISTIAN SCIENCE CHURCHES
IN BERKELEY**

Branches of The Mother Church, The First Church of Christ, Scientist, in Boston, Massachusetts.

FIRST CHURCH OF CHRIST, SCIENTIST,
2619 Dwight Way at Bowditch

SECOND CHURCH OF CHRIST, SCIENTIST,
1521 Spruce St., near Cedar

THIRD CHURCH OF CHRIST, SCIENTIST,
2715 Prince St., near College Ave.

SERVICES: Sunday 11 a.m., Wednesday 8 p.m., Sunday School 9:30 and 11 a.m. Sunday evening, First Church 8 p.m.

FREE READING ROOMS: At 2105 Center St. Open 9 a.m. to 9 p.m. except Wednesdays and Saturdays to 6. Sundays and holidays 2 to 5.

At 2482 Telegraph Ave. near Dwight. Open 8 a.m. to 9 p.m. except Wednesdays to 7. Sundays and holidays 2 to 5.

At 2715 1/2 Prince St. Open 1 to 4 p.m. daily except Sundays and holidays.

ALL ARE CORDIALLY INVITED

**MASONIC CLUB
BIG GAME DANCE**

FRIDAY, NOVEMBER 20

9:00-1:00 A.M.

+
Informal
75c per non-member
+

Music by RUDY SALIVINI

Y's Plan Asilomar Conference

Plans for the forthcoming Asilomar conference, scheduled for Dec. 26 to Jan. 1, will be discussed during a joint YMCA-YWCA banquet at 6 p.m. Tuesday in the Y cottage.

Chief spokesman for the opportunities and advantages offered at the annual conference will be Mrs. Harry Kingman, wife of the executive head of the University YMCA.

Student speakers will be Vivian Lee and Archie Hanlan, University YWCA and YMCA members. The lighter, gayer side of conference life at Asilomar will be presented in the form of skit dramatizations directed by Jim Page and Jacqui Thompson.

One of the nine regions of the Student Christian movement in the United States, Asilomar draws its members from Nevada, Arizona, California and Hawaii. Students and leading educators from these areas gather annually to study personal,

religious, national and international problems with an aim toward fostering better understanding.

Walter Muelder, dean of the Boston university school of theology, will present the morning platform, while Howard Thurman, minister of the Fellowship church in San Francisco, will lead the morning worship. Fourteen other well-known executives, educators and administrators will be among the seminar speakers.

Subjects pertaining to some of today's most pressing problems have been chosen as topics to be considered during seminar and discussion group meetings. Some of these will be: "Preparation for Marriage"; "Propaganda Analysis"; "Economic Democracy," and "Non-Violence as a Means of Achieving Social Change."

Firesides, entertainment and jaunts into near-by Carmel, Pacific Grove and Monterey will fill the eve-

nings of the seven-day conference. It is not necessary to hold membership in either the YMCA or YWCA to be a delegate. All students and faculty members are eligible to attend and enter into the spirit and purposes of the conference.

Expenses for the week total approximately \$25, including an \$8.50 registration fee which will increase to \$9.50 after Dec. 1. Travel expenses, however, are not included in this account.

Students interested in Asilomar are invited to attend the banquet Tuesday, from 6-7:30 p.m. at the Y cottage. Dinner reservation may be made at either the Y cottage or Stiles hall before noon Monday.

Student Service Commissioner Will Speak

The Rev. Morris Wee, executive secretary of the Student Service commission of the National Lutheran council and a national advisor to students, will be Homecoming guest at the Lutheran Student center this weekend.

The Rev. Mr. Wee will speak at noon today at the center, 2311 Bowditch street. He will also address the Lutheran Brotherhood of the East Bay at 6 p.m. in St. Michel's Lutheran church, Benvenue and Alcatraz avenues.

The speaker is a graduate of St. Olaf college and Luther Theological seminary in Minnesota and obtained his Ph.D. from the University of Wisconsin.

All students are invited to the weekend events. A cost lunch will be served at today's meeting.

Pierre van Paassen To Speak On Jewish National State

Pierre van Paassen, internationally known author, lecturer and traveler, will make a public appearance in Oakland at 8:15 p.m. Monday in the Westlake Junior High School auditorium.

Van Paassen, author of the books "Days of Our Years," "Forgotten Ally," "The Time Is Now," and "That Day Alone," will speak in the interest of the national homeland for the Jewish people.

Speaking on the topic "Israel Today," Van Paassen will answer questions from the audience in Town hall manner following his address.

The lecture will be sponsored by the Jewish Community center of Oakland, a Red Feather agency.

A few tickets to hear the eminent author and lecturer are available at a special student price at the Hillel foundation, 2736 Bancroft way. They may be obtained between 9 a.m. and 5 p.m. and at religious services at 7:30 and 8:15 p.m. today.


A car pool sign-up for the meeting will be posted at Hillel.

Corwin Radio Play Will Be Dramatized By Church Groups

A combined cast from Plymouth house and Wesley foundation will enact Norman Corwin's radio drama, "Psalm for a Dark Year," at 6 p.m. Sunday in the chapel of the First Congregational church, 2345 Channing way.

First given on Thanksgiving, 1944, the drama has been incorporated into a book entitled "More by Corwin."

A social hour and refreshments will follow the services at Plymouth house. The events are open to all students.



"Thanks Be Unto God"

FIRST PRESBYTERIAN CHURCH

Dana and Channing

**FIRST
UNITARIAN CHURCH**

Bancroft Way and Dana

J. Raymond Cope, Ph.D., Minister

NOVEMBER 21, 1948—10:45

Sermon topic:
"THANKSGIVING AND THE
AMERICAN TRADITION"

MYRIAM ZUNSER, Violin
HENRY GIDEON, Organ
CHARLES PIPER, Baritone

In a thirty minute musical program
CHANNING CLUB AT 7:30 P.M.

Zionists Plan Power Politics Talk Tuesday

An analysis of factors involved in power politics will be presented by Morris Lowenthal, San Francisco attorney, at 8 p.m. Tuesday at Hillel foundation, 2736 Bancroft way.

Lowenthal will address an open meeting of the Berkeley chapter of the Intercollegiate Zionist Federation of America.

As chairman of the San Francisco Zionist Emergency council, a coordinating organization for Zionist activity throughout the Bay area, Lowenthal has participated in many national and local activities of Zionist organizations.

"Birth of a Prophecy," movie depicting Zionist activity in the creation of Israel, will also be shown. Plans for a mammoth production to be presented immediately after the December vacation will be discussed during the meeting.

YOUTH VESPERS

Sunday, Nov. 21 - 4 p.m.

AT GRACE CATHEDRAL
California and Taylor Streets
San Francisco

•

Sermon by
The Rev. Charles W. Carnan, Jr.

Bay Area Students To Hold Art Ball

Artists of the entire Bay area are invited to attend a Beaux Arts ball to be given by the art classes of the Oakland Recreation department from 7 p.m. to midnight tomorrow at the Bushrod Community center, 560 59th street, Oakland.

The ball will feature a smorgasbord dinner, an art and sculpture exhibit under black light and fortune telling.

Purpose of the affair will be to raise money for a large brick kiln needed by the classes in the department. Dress will be primarily costume but persons will be admitted in street dress.

European Conditions Will Be Described

Beatrice Goldman, Oakland public school teacher, will discuss her impressions of social and economic conditions in Europe at the Hillel Sunday forum.

The forum will begin at 8 p.m. Sunday at Hillel foundation, 2736 Bancroft way. Hillel's traditional weekly dance will follow the meeting.

The speaker conducts book review seminars for the Oakland Jewish Community center and has been on the Mills College Institute of international relations. She has recently returned from a visit in Europe.

Military Association

Military association will show "Attack," a film telling the story of the battle of Bougainville, at noon today in 89 Gymnasium for Men.

All students are invited to attend.

**UNIVERSITY
LUTHERAN CHAPEL**

(Missouri Synod)

SUNDAY, NOVEMBER 21, 1948

BIBLE STUDY: 10 a.m.—"HOW TO TREAT SKEPTICS"

DIVINE SERVICE: 11 a.m.

Student Supper Hour 5:30 p.m.

1,000 feet of color film taken in five countries of Europe, summer of 1947, to be shown at 7:50 p.m.

A Student Congregation

2740 COLLEGE AVENUE

ST. JOHN'S

PRELIMINARY
2640 COLLEGE AVENUE
STANLEY W. PETERSON, MINISTER

11:00 A. M.
THANKSGIVING SERVICE

5:00 P. M.
ECUMENICAL VESPER SERIES
Rev. Kenneth Adams

Topic—"Living Conditions and Relief
Need in Europe"

5:45 P. M.
ST. JOHN'S CLUB SUPPER
Discussion led by Paul Alexander

Familiar Scenes



The Roofing Section

Flying Club Announces Trial Results

University Flying club announces the following results of team trials held in Livermore last weekend:

Landscaping Program

Landscaping of the area about the new Forestry building will be completed in four months.

Plans call for a parking lot north of the building and a road leading up to the east entrance.

Trees and shrubs will be planted in the area.

Paper cutting: Mike Schnapp, first; Walt Johnson, second.

Spot landings: Bill Knapton, first; Marion Dietrich, second.

Level bombing: Ed Thomas, first; Bill Knapton, second.

Dive bombing: Ed Thomas, first; Bill Shinn, second.

Bill Lorenz, captain of the team, said that members of the 12-man team will be announced later. The team is negotiating for a meet with Stanford, he added.

U.C. Flying Club Doubts Indian Air Raid

PARATROOPERS SEEM ONLY AERIAL THREAT TO CAMPANILE

By Bob Lyhne

That rumored Stanford air raid on the Campanile hasn't got a chance of coming off.

Marion Dietrich of the U.C. Flying club yesterday poured cold water on the idea with this startling information:

The Stanford Flying club is no good at precision bombing. In fact, it's "notably poor."

In the inter-collegiate air meet at Livermore last year the flying Farm boys came in third or fourth (she couldn't remember which but it was

not good) out of a field of four clubs.

And the Stanford flyers haven't done well in other recent competitions either, she added.

The cards, it seems, are stacked against Stanford. Take the technical difficulties, for instance. Miss Dietrich doesn't think a falling sackful of paint would hold together. And the Campanile would be a mighty hard target to hit, even if the Stanfordites were good at it.

Then there's the Civil Aeronautics authority, which frowns on the dropping of anything from airplanes. For

this reason Miss Dietrich believes there's not a commercial pilot in the state who could be hired to do the deed.

Of course it would be difficult to identify a plane making a run at night, she admitted, but there are few light planes operating at night, and the raiders could probably be traced through their air field.

Well, what about a helicopter? Those things, said Miss Dietrich, are even easier to identify. And pouring paint over the side is also a violation of CAA regulations. In addition, helicopters are frightfully hard to maneuver.

There was just one possibility left: What about paratroopers? Miss Dietrich didn't have a good argument against this.

Harvard Physicist To Speak

Philipp Frank, professor of physics at Harvard university, will discuss "Political Ideologies and Scientific Theory" at 7:30 p.m. next Friday in 2503 Life Sciences building.

The professor is a leading authority on geometrical optics and the theory of dynamics. He was chosen by Albert Einstein to be his successor as professor of theoretical physics at Prague in 1912.

The physicist aided in founding the theory of logical empiricism and now plays a leading role in the Institute for Unity of Science.

A question period will follow Frank's talk.

The meeting, sponsored by the Graduate Sociology club, is open to the public.

We Prove

Your Laundry comes out whiter, cleaner!

SCOTT'S LAUNDRAY on BERKELEY WAY

1 block north of University Avenue, between Shattuck and the Campus
Leave your laundry any time, pick it up washed and dried anytime after one hour!

WEEKDAYS 8 a.m. to 9 p.m. — SATURDAYS to 6 p.m.
SUNDAYS 9:30 a.m. to 12:30 p.m.

MERCURY RECORDS PRESENTS NORMAN GRANZ' JAZZ AT THE PHILHARMONIC

Charlie Parker • Flip Phillips
Coleman Hawkins • Howard McGhee
J. C. Heard • Sonny Criss
Tommy Turk

TUESDAY NOV. 23 8:30 P. M.
OAKLAND AUD. THEATRE
WEDNESDAY NOV. 24 8:30 P. M.
SAN FRANCISCO OPERA HOUSE

I. Magnin & Co.
marima-sixth floor

Marima Go-Togethers for College Get-Togethers

gabardine skirt: green, beige, toast, grey, brown, black 17.95
wool weskit: navy, red, grey 6.95
white cotton shirt 4.50

Inadequate, Antiquated . . .

Gallery Needs Space, Funds

By Glenn Loney

Next door to building Q, the University art gallery is situated.

The building is a rectangular old brick edifice adorned with gigantic WPA mural mosaics and guarded by two stone lions.

Once or twice a semester, one may find the small gallery open for exhibit. Inside the brick shell may be found case displays and wall exhibits which often contain numerous phases of art—painting, textile manufacture, ceramics, jewelry making.

Exhibitions have been planned

around cultural and geographic themes such as, "Collections of Japanese Prints" and "Pre-Columbian and Andean Art."

However, exhibits are limited in size by the small building. There is no running water. And it is extremely difficult to arrange displays economically, owing to moving and packing costs.

If this description suggests that present conditions are inadequate, inconvenient and somewhat antiquated, then it has truly depicted the dilemma of Winfield S. Wellington, director of the art gallery.

Wellington, chairman of the department of decorative art, is faced with a lack of adequate display space and funds, on the one hand, and with large collections of valuable materials for exhibition, on the other.

The present gallery was formerly used as the University power plant and was scheduled for demolition in the early '30's. Eugen Neuhaus, professor of art, had the building salvaged for an art gallery in 1933.

Albert M. Bender, the Regents of the University and the Class of 1933 were instrumental in endowing the

gallery, but funds are rather meager. Wellington said that labor costs on exhibits quite often eat up most of the budget.

Despite all the expense and inconvenience, exhibits are always well received. The pre-Columbian show had 14,000 visitors.

Wellington spent three weeks dismantling and packing the exhibit items when the display had closed, however. There is not sufficient storage space in the building, nor is there room to have one show open to the public while another is being arranged.

A new art gallery is not what is really needed, Wellington feels. The gallery director advocates a University museum in which art exhibits would be a portion of the general displays.

"We need a simple structure with flexibility and lots of cubage space for exhibit and storage," Wellington stated.

He feels it is more important to present the University's distinguished collections of classic art objects, textiles, sculpture, than to have displays of current art work. University collections can not be well duplicated, while there are three San Francisco museums featuring current work.

Until a convenient, spacious and well-endowed museum-art gallery is constructed, Wellington will continue to arrange exhibits in the former power plant.

Merchants Offer Suggestions To Solve Traffic Congestion

Berkeley merchant and civic groups, in cooperation with a city-wide survey, have begun to offer suggestions for improvement of traffic conditions in Berkeley.

The Berkeley Chamber of Commerce transportation committee is conducting the traffic survey, which will include a study of parking problems near the University.

"Suggestions by students on this matter will be welcomed providing they contain detailed explanations," Chester Bekins, committee chairman, stated.

Letters have been sent to Berkeley merchant and civic groups asking for their suggestions. When all the answers have been received they will be

consolidated by the committee and submitted to the Berkeley city council for consideration.

Problems being studied in the survey are streetcar and bus service, need for more parking meters, signs and traffic lights, off-street parking facilities and cross-town arterials.

As part of the survey, a group of Telegraph avenue merchants is making a study of parking problems near Sather Gate.

"One of the principal problems which Berkeley faces is providing for the best possible arrangement of streets, parking areas and transit lines to care for a greatly increased circulation of traffic in the city," Bekins emphasized.

SHORT OF CASH?

For \$1.20

you can take home a complete Mexican meal for two . . . ready to serve.

Stop at

La Tolteca

1732 University Ave. - BE. 7-0921
Open Sundays - Closed Mondays

SOMETHING NEW



IN SUNDAY DINING

For enjoyable eating treat yourself to our authentic Italian food

Veal Scallopine a la Marsala
Roast Prime Rib of Beef Au Jus

OUR OWN PIZZA - MADE TO ORDER
Open all day Sunday

ROMA RESTAURANT

5036 Telegraph Ave., Oakland

Make your reservations for DINNER after the BIG GAME

MINISTRONE
JUMBO RAVIOLI

Unique Italian Dinners
Prepared by Mother Ravazza



4073
San Pablo
Emeryville

Activities

Axe-travaganza: 3:30 p.m., Gymnasium for Men, final dress rehearsal.
Chinese Students: 10 a.m. to noon, 2600 Etna street. Reception for Stanford rooters. Refreshments will be served. All CSC members are requested to attend.

Chinese Students Christian Association: Noon, recreation room, Wesley Foundation. Bridge, ping-pong, discussion groups. Everyone is welcome. Bring your own lunch.

College Women's Club Juniors: Noon. Weekly luncheon.

Conference Committee: Noon to 1 p.m., 105 Eshleman hall.

Friday Fling Committee: 3 p.m., 111 Eshleman hall.

Glee Club: 5 p.m., Eshleman auditorium.

Hillel Foundation: 3:30 p.m., Sunday. Executive council meeting.

Hillel Foundation: 2736 Bancroft way. Open house following religious services tonight and after the game tomorrow.

Lambda Delta Sigma: Noon, LDS Institute of Religion, 2368 Le Conte avenue.

Treble Clef: 4 p.m., Eshleman auditorium.

Writers' Conference: 4-5 p.m., poetry, 222 Wheeler; prose 223-224 Wheeler.

Mills Art Exhibit

The Mills College Art gallery is showing the following art exhibits: "American Primitive Painters," a collection belonging to Ernest L. Tross of Hollywood; "Swedish Decorative Arts," and "Early Photographs (Calotypes) by Thomas Hill (1807-1870) and Robert Adamson (1821-1848)."

A lecture on "American Primitives" by Alfred Neumeyer will be given Nov. 26, at 8:15 p.m.

The gallery is open from 2-5 p.m. Wednesday, Friday and Sunday afternoons.

University Board of Regents meets once annually at Santa Barbara college to study problems there at first hand.

Bureau Of Occupations

A representative of the Kaiser-Frazer corporation will interview engineers and accountants for employment at Willow Run, Mich. Engineers will be trained for supervisory positions in the production department.

Arabian American Oil company will interview mechanical, civil, electrical and chemical engineers, geologists, geophysicists and chemists in the bureau today.

Men are needed from 10:30 a.m. to 1:30 p.m. or from 11 a.m. to 2 p.m. Monday through Friday, for restaurant work at \$1.10 an hour.

Big Game Dance

Saturday, November 20

Music by the U.C. favorite,

BUD CHEEK

AND HIS ORCHESTRA

9 o'clock - Informal - Stag or Drag
only 85 cents

Celebrate at the

PALM ROOM

★ **BERR KELLE Y "Y"**

12:00 1 AILESTON WAY

Opposite Berkeley Post Office

Next Sat., Nov. 27

MAURICE ANGER,
his piano and
orchestra
of radio fame

ITS TRADITIONAL . . .

CORSAGES

FOR HOMECOMING WEEKEND
from

LEE'S FLORIST

1420 UNIVERSITY AVE.
Telephone THornwall 3-0502

DANCING . . . every Friday evening

with TOP BANDS ONLY at
Cal's Favorite Dancing Spot

This week:

PRE-BIG GAME DANCE

JACK MUIR, the Magical M.C. and entertainer

Fun Galore - Special rate for college students: 75¢ each

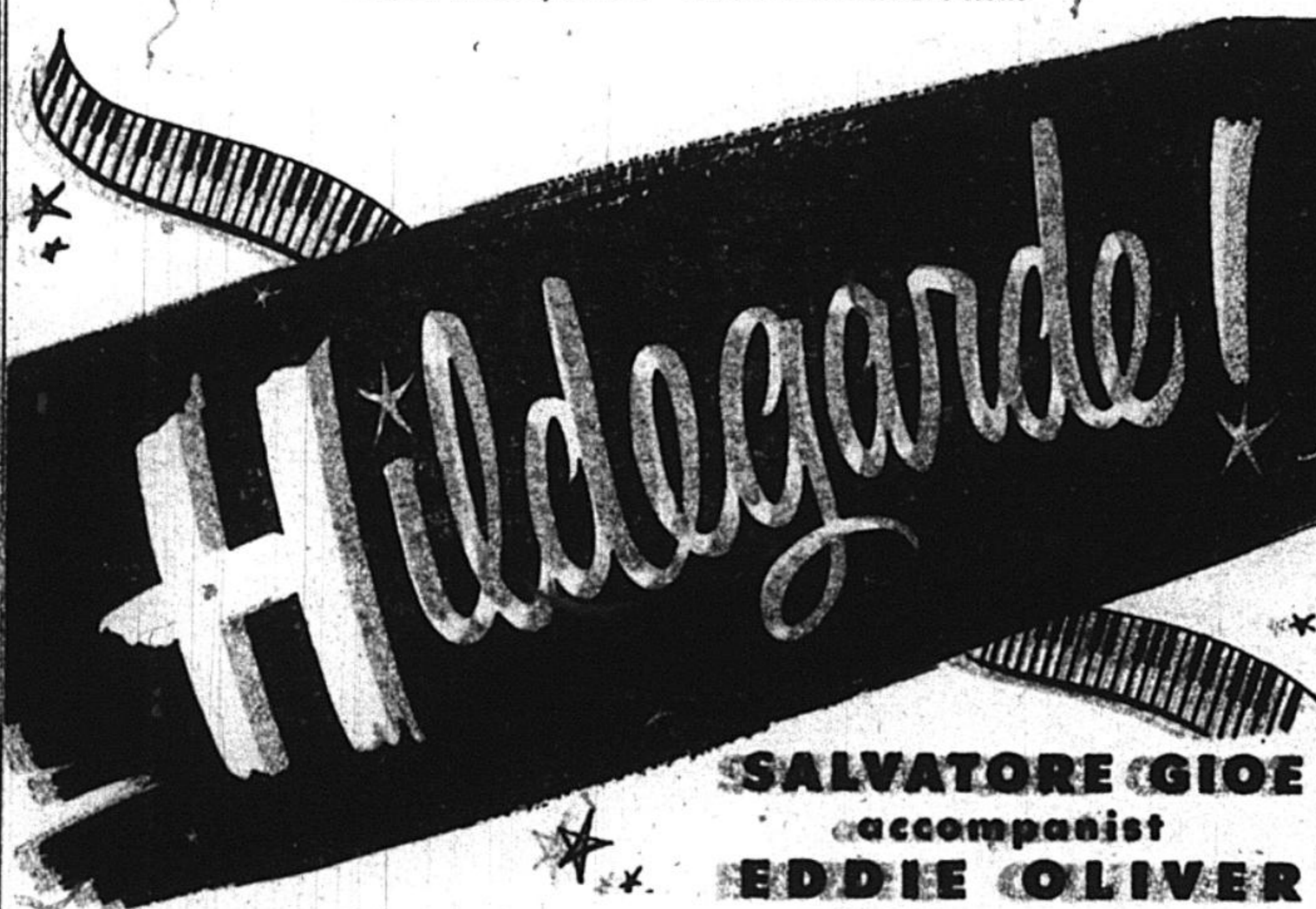
Berkeley Women's City Club

2315 Durant Ave.
(a rental)

**CAL - STANFORD
BIG GAME CELEBRATION**

Table d'hote or a la carte dinners if desired

Cover \$2.50 plus tax - Make reservations now.



SALVATORE GIOE
accompanist
EDDIE OLIVER
and his orchestra

HOTEL MARK HOPKINS

GEO. D. SMITH, GENERAL MANAGER

Axe Show Adds Life to Campus

(Continued from page 1)
don Sproul is thoroughly interrogated about his days on the track team. A few other pertinent facts about the life of a university executive are also revealed in the scene which features Steve Gexter, Bob Newell, Dick Banks, Lillian Mitchell, Jim Leddy, Dave Bowen, Jack Reiser, Bob Fulton and Ann Jeffreys.

Faculty Glade and those three well-known campus figures, Dr. Korner, Professor Rinds and Mr. Lapsky, next comes under the scrutiny of the audience. Dick Van Houten, Jim Leddy and Bob Newell portray the faculty members in their favorite haunt.

A Sather Gate conclave featuring Jim Cundall, Dick Mayes and the Dave Kenyon quartet is the next number. Then the action shifts back to the New York office of the magazine where the staff is again seen in action.

Once more across the nation, and the Greek organizations on campus are visited by the intrepid newsmen. The Sigma Epsilon Xi sorority opens its doors to reveal a boogie dance

featuring Stan Carter, Ruth Evans, John Hampshire, Adele Chase and the chorus. The chorus consists of Ken Ballard, Bert Ballard, Eleanor Nelson, Pat Lux, Pat Mundorff, Diane Harward, Marie Marsico, Delma Brunetti, Phoebe Nichols and Fred Sinclair.

The Eta Beta Pi fraternity is also taken in as Vic Schwartz, Jim Meyer, Dick Mayes, Frank Barney, Ken Grundman, Sheldon Arnot, Bob King and the Dave Kenyon quartet are seen in a satire on fraternal life.

The Cowell Howl, featuring Peggy Teague singing "Solitude," depicts that famous campus institution in its rarest form. Betty Bowen; John Copeland; Jane Biedenbach; Delma Brunetti; Pat Lux; John Hampshire; Dick Robertson; Diane Harward; Bert Ballard; the Discords—Adele Waldenkopf, Carol Pratt, Ann Meek and Betsy Davison, and the chorus are also featured in the number.

Another flashback to the New York office and life goes to a Greek Theatre rally. With Head Yell Leader Jack Wolfe leading the audience in a yell and Homecoming Queen

Liz Dennison and Lee Sutton doing a fast tap duo, Rosemary Hallum, Pally Small, Marilyn Waxman, Everett Shapiro, Carl and Madge Lude, Seymour Rose and Russ Bennett and his Silhouettes rock the gym in the manner of a real rally.

Again a return to the New York office and the reporters come back to Berkeley for an interview with Professor McNutt as portrayed by Tom Trowbridge. Then it is across the seas to Hawaii, as two Bear rovers look over the islands for a possible tenth campus. A Hawaiian War Chant dance by Norma Ballaris; the Skyriders, Chuck Hattersley, Kermit Dorius, Pat Lux, Joe Mendoza; Stan Carter, Carl Pon; Phoebe Nichols, Russ Bennett and the chorus are featured.

The Rockefeller Center office is seen again and the Lifemen head west to the Memorial stadium locker room after the last practice before the Big Game. Pappy Waldorf in the person of Frank Harding and the Bear Varsity portrayed by members of the frosh grid squad will show just what goes on at this tense moment.

An evening stroll about the campus features vocalists Yvonne Martin and Carl Pon singing "Sleepytime," "Sleepytime" and "Nandy," a song used in the Cowell Howl number, were both written by Warren Burns.

Then the entire cast comes forth for the finale to what should be an evening of top entertainment.

The Axe-travaganza is produced by John Russell and written and directed by Jim Meyer, Mary Del Fisher and Dick Van Houten.

Ushering Signups Continue

Ushering signups will be taken from 12:30-1:30 p.m. today at the Daily Californian distribution booth, Eshleman court, for the following performances:

Ed Wynn's "Laugh Carnival," Nov. 28, 29 and 30 and Dec. 2 and 4; "One Fine Day," matinee tomorrow; Bach Christmas concert, Dec. 4; Tassie and Holt, Dec. 7; Nina Dunkel, today; Dean of Canterbury, Dec. 8; Clare

Boothe Luce, today; Pacific Opera's "La Boheme," Tuesday.

Standard Symphony, Nov. 28; symphony matinees Nov. 26 and Dec. 3, 10 and 17; Adler and Splendor, Sunday, and ballet, Dec. 5.

Ushers are reminded that the Pacific Opera company's performance of "Lucia di Lammermoor," scheduled for today, has been postponed until Nov. 26. Students who have signed up to usher and will be unable to attend at this later date should return their tickets as soon as possible to the ushering booth.

ERP Lecture Monday

The European Recovery program will be the topic of a free public lecture to be held at 8 p.m. Monday in 2000 Life Sciences building.

Samuel W. Anderson, director of the industry division of the Economic Cooperation Administration, will be the speaker. Slides will be shown with the lecture.

you'll
want to
stop



... the clock when you taste
the hamburgers at Chats ...
Dinners and Breakfasts ...
they're inexpensive too.

CHATS

FOUNTAIN RESTAURANT
2429 Shattuck Avenue
Open daily - 6 a.m. - 12:30 a.m.

19th Century Music Recitals Set Here

Three recitals of 19th century music will be presented by the Committee on Drama, Lectures and Music at 8:15 p.m. Monday, Nov. 29 and Dec. 7 in Wheeler auditorium.

The first program will consist of three works of Brahms interpreted by Rudolph Schmitt, clarinetist; George Barati, cellist, and Bernhard Abramowitz, pianist.

Nov. 29 Contralto Mary Groom Jones will sing a series of numbers accompanied by Mildred Randolph Strand at the piano. Detlev Olhausen will be guest violinist. Pianist Joaquin Nin-Culmell will participate in the concluding recital.

Tickets for students are 90 cents. They may be purchased at all University Extension centers.

Senior Appointments For B&G Pictures End In Seven Days

Only seven days remain for seniors to buy Blue and Golds.

If seniors want their pictures to appear in the graduating section of the "Golden Nugget edition," they must put down a minimum of three dollars before having their photos taken.

Because 30 to 40 people daily miss photo appointments, Manager Bruce Pass warns that in the closing days of the picture-taking, students with appointments will have preference. The studio will be open to Dec. 9 to accommodate students who have already made appointments.

Workshop Sponsors Chamber Singers

A program of seldom-heard medieval musical selections will be presented on the California Concert hour broadcast at 7:30 p.m. Sunday over KRE.

Featuring the Berkeley Chamber singers, the Radio Workshop concert will include madrigals, rounds, choral numbers and early English folk songs.

The members of the choral group, under the direction of Norman Mealy, have arranged the program as an educational venture into musical history.

Durant Reservations

An appeal was made last night for the return of a book of reservations belonging to the Durant hotel, 2600 Durant avenue, which was taken during a serpentine through the hotel lobby. The book is needed to verify the many reservation claims which will be made today and tomorrow.



**Berkeley's Favorite
Meating Place**

Broiled Hamburgers
Hot Apple Pie

Open daily 11 a.m.
to 2 a.m.

1974 SHATTUCK AVE.
T Hornwall 3-2481

ANNOUNCE YOUR
ENGAGEMENT
WITH A
FIVE-POUND BOX
OF CHOCOLATES

from

Edy's

CHARACTER CANDIES

BERKELEY • SAN FRANCISCO • OAKLAND

NOW OPEN!

Ice Cream Shop and Fountain Lunch
CATERING TO PARTIES
Featuring 17 flavors of Ice Cream
SUPER CHOCOLATE DIPPED CONES 10c
This week's Special: LEMON CUSTARD

Blue & Gold Ice Cream Shop

1660 SHATTUCK AVENUE :: Open daily 'til 12 p.m.

When you ride in a Yellow Cab ...



—provided you do not desire a special
route, or request intermediate stops ...

Any direct trip between two points within this
5-city area never costs more than \$1.75 ...
no matter how much more the meter reads.
Maximum rate savings apply automatically!

Yellow Cabs

Hlgate 4-1234

MEXICAN FOOD at its best

CASA MAÑANA DINING ROOM

Enchiladas Tamales Chili Relleno Tacos

3901 Grand Ave. OAKLAND Piedmont 5-4278

LUNCHEONS 11 to 2 • DINNERS 5 to 9

BERKELEY
SHATTUCK - HASTE - RIVERVIEW 4300

Last Times Saturday
"SAXON CHARM"
and
"Gentleman
from Nowhere"
Starts Sunday
"THE COMMANDOS
STRIKE AT DAWN" also
"THE INVADERS"

Tand
BROADWAY - OAKLAND 2505

OPEN ALL NIGHT
2nd Rave Week!
Jane Wyman - Lew Ayres
"JOHNNY
BELINDA"
also Mystery Thriller!
"Inner Sanctum"

ROXIE
TELEGRAPH - OAKLAND 1311

Meet Venus Jones!
Ava Gardner - Robert Walker
Dick Haymes
"ONE TOUCH
OF VENUS"
Also Murder Mystery!
"Shed No Tears"
with Wallace Ford

ESQUIRE
SAN PABLO - OAKLAND 4412

OPEN ALL NIGHT
Larry Parks
Marguerite Chapman
"The Gallant Blade"
in Glorious Cinecolor — also
"Rusty Leads
the Way"
with Ted Donaldson

OAKS
SOLANO - ALAMEDA 1117

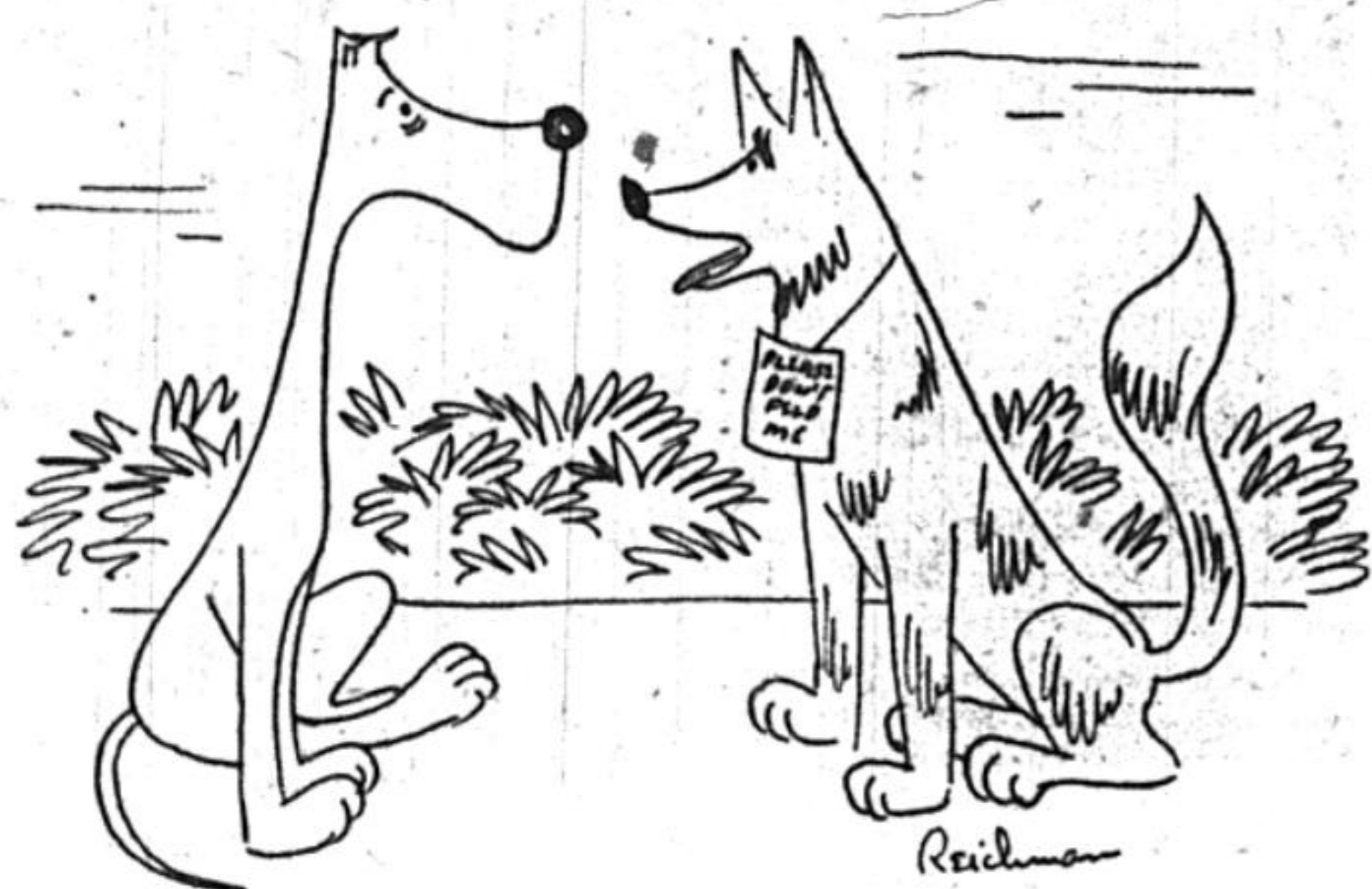
NOW!
Dennis O'Keefe - Louis Hayward
"Walk a
Crooked Mile"
and
Wm. Powell - Ann Blythe
"MR. PEABODY
and the MERMAID"

NEW SHOW TONIGHT!
WORLD'S FINEST
DRIVE-IN THEATRE

El Cerrito MOTOR MOVIES

San Pablo and Fairmount
Avenues
Phone LAndscape 6-7824
TONITE & SATURDAY
"THE MACOMBER
AFFAIR"
Also "LET'S LIVE AGAIN"
Gates Open at 6 P.M.

DOVER



"I feel like a darn fool carrying this sign. What's it say, anyway?"

POTPOURRI

By Mel Novikoff

Most of the people who see Sir Laurence Olivier's "Hamlet," are going to shout "Wonderful!" More than a few, however, are going to cry "Bloody murder!"—and they won't be referring to the action in the play, but rather to the changes made in it.

Since the controversy over Shakespeare's subtle, complex and powerful tragedy has been raging for some 350 years, this is hardly surprising. "Hamlet" has been subject to much varied interpretation, and enjoyment of the film version depends mostly upon acceptance of the extremely original and bold terms in which Olivier has conceived his production. It is only fair, however, that the film be judged not by the completeness and fidelity of the adaptation, but rather by the success with which the play has been translated into cinematic terms within the scope of Olivier's interpretation.

In the film's prologue we see the key to that interpretation, taken from Hamlet's conversation prior to the appearance of the Ghost (which, incidentally, is Olivier's voice mechanically distorted) when he speaks of a "particular fault" from which men "take corruption." That particular "fault" in Hamlet, Olivier tells us, is his inability to make up his mind.

Within such a simplified pattern, it is true, the play's fullest range and meaning is circumscribed and much falls by the wayside, including Rosencrantz, Guildenstern and Fortinbras, and some of the famous speeches. Despite the loss suffered under this seemingly uncompromising attitude, much is gained, including greater dramatic concentration, unity and coherence than is found in the play. Above all, "Hamlet" fulfills a necessary requirement of the screen—intelligibility—and this is a feat in itself.

One major evidence of the film's originality is the treatment of Ophelia's scenes. In the camera's extended and intimate examination of her tragedy, it becomes heightened and more significant, her virtue and innocence a symbol, as she is crushed between the powerful forces of the play. Moreover, Shakespeare's insight into the operation of the human mind grows more remarkable through the new realism which the camera—and Jean Simmon's performance, introduce to the mad scenes.

Other bold and original strokes are found in the incestuous relationship implied between Hamlet and his mother; in the almost offhand delivery of Polonius' famous advice to his son; in dozens of bits of action that give clarity and meaning to otherwise obscure details.

From a purely cinematic viewpoint, "Hamlet" is not as successful as its predecessor, "Henry V." The latter, a glorified, colorful spectacle, teeming with action, was a natural for the motion picture medium, and specifically, the Technicolor camera. "Hamlet," conversely, is lacking in action—a profound psychological study, a play of the mind.

That the film is a tight, intensely suspenseful two-and-one-half hours indicates the obstacle of lack of action has been hurdled. For the most part, this is true. Every descriptive speech, from the Ghost's narration of the murder to Hamlet's letter describing his sea escapade, has been given pictorial treatment.

Every facet of the camera and sound track, including some amazing deep focus photography, has been employed to achieve the pictorial effect. The "To be, or not to be" soliloquy is superb in its integration of voice, sound, picture and music, the camera acting as Hamlet's eyes in his contemplation of suicide. The dueling match is unquestionably the most realistic and exciting ever filmed. Again the superiority of film over stage in depicting the "earthy" realism of the graveyard sequence is obvious.

The pictorial high spot of "Hamlet" comes in the magnificent final scene where the camera sums up and conveys the full impact of the tragedy, though on a somewhat emotionalized level, as it follows the body of Hamlet being borne to the uppermost ramparts of Elsinore, pausing significantly at the empty chambers of the King and Queen.

There are other moments, however, when the camera moves somewhat aimlessly through cold corridors, up and down circular staircases, across barren chambers, with no other purpose, apparently, than to keep things moving at all costs. At such moments, the photography seems forced and self-conscious, the result tiresome and confused.

This discussion of "Hamlet" will be continued next week with a consideration of Sir Laurence Olivier's interpretation of the title role.

Play Tryouts Open

Tryouts for two plays will be open today, University theater announced yesterday.

Last time for auditions for "Defeat" by John Galsworthy will be from 4-5 p.m. in 201 Durant hall.

Students may try out for the first Spring major production, "Arms and the Man" by George Bernard Shaw, from 4-6 p.m. and 7-9:30 p.m.

Auditions next week will be held from 7-9:30 p.m. Monday, Tuesday and Wednesday and from 4-6 p.m. Tuesday and Friday in 106 California hall.

Film Story of Steel To Be Shown Here

"The Making and Shaping of Steel," a detailed motion picture tracing the story of steel from the mine to the finished product, will be shown at 4 p.m. Monday in 300 Mining building.

The film, presented by the engineering department will also be shown at 2 p.m. Tuesday and Wednesday.

Students, faculty and the public are invited to attend.

RUGGED PRICE CUTS—
CORT TAILORS AND A COMPLETE RE-
VAUGHN IS OFFERING THE MEN O-
LARGEST AND FINEST SELECTION O-
STATE ARE SUBSTANTIALLY BELOW
FOR TOP QUALITY BENCH TAILORI-
SUITS 39⁸⁵ 44⁸⁵ 49⁸⁵

\$55 FLEET ST. RANGE—SAM'L CORT FINE
CHEVIOTS—TAILORED WITH DETAIL AND
AND WIDE-SHOULDERED BOX BACK—THRE-
OUR CASH PRICE FOR FALL 1948—\$55—NOW

\$60 IMPERIAL GABARDINES—A HEAVY-BOL-
FULLY—WRINKLES FALL OUT QUICKLY—T-
priced" 44.85

\$65 SAM'L CORT CUSTOM GROUP WORST
WEIGHT SHARKSKINS—PIN CHECKS—MODI-
BENCH TAILORED—STARTED THE SEASON

another example of great vaughn val
 the university manner" FOR THE SM
 cures your choice from complete early
 tuck and 2290 telegraph herkeley—
 broadway oakland

V



"It won't happen again," OSKI promised yesterday. During a slow part of the Washington State game last week he let a couple of Indians tie him up, just for laughs; later he chased them out of the stadium with a broom handle. But this week, OSKI said, he's definitely out for blood. —L. & L. Photo

Peace Hopes Dim

Guard West Europe, Dutch Writer Urges

By Louis Bell

Permanent peace with Russia is a theoretical possibility, but practical chances of achieving it seem dim to Ernst van Raalte, Dutch newspaperman and political scientist who has been visiting the Bay area this week. "Russia probably does not want war, but there is great danger that she may overestimate the amount of aggression she can commit without bringing on war," van Raalte said.

Wednesday in an interview at the Claremont hotel.

Military defense of western Europe is of the utmost importance, van Raalte declared. He added that he believes the United States will soon join in the mutual defense agreement recently signed by Great Britain, France, the Netherlands, Belgium and Luxembourg.

Holland's main contribution to European defense will be the services of her large merchant marine, van Raalte predicted.

"Direct military support will be impossible for us, because most of our army is engaged in preserving law and order in Indonesia," he explained.

Commenting on the Indonesian turmoil, the 56-year-old correspondent and political columnist said an independent government for the East Indies is very likely. He emphasized, however, that such a government cannot be based on the present Indonesian Republic.

The Dutch government and a majority of the Dutch people want to see an independent Indonesian government, van Raalte said. However, the Dutch desire a representative government covering all of the East Indian possessions, rather than what van Raalte called "the Communist-infiltrated Indonesian Republic which has influence in only a small part of Indonesia."

Van Raalte is paying his first visit to the United States. His main purposes in coming here, he said, are to observe government methods of training foreign service personnel and to compare European and American universities.

He has been inspecting American schools of journalism and courses in international relations. At the University Wednesday, van Raalte lectured before two political science classes and toured the campus with faculty members.

Van Raalte finds American universities superior to European ones in several respects. Foremost of these is the closer personal relationship between students and professors.

"Here, the student forms his own ideas and feels free to argue with the professor as an equal," he commented.

Concluding his stay in the Bay area, van Raalte will leave for the east this morning.

U.S. Budget Expert Will Speak Today

Patterson H. French, assistant director of the U. S. Bureau of the Budget, will be the guest speaker at today's meeting of the American Society for Public Administration.

French will give an informal talk at 8 p.m. at the home of Joseph Harris, Professor of political science, 15 Terrace Walk, Berkeley. All interested students and faculty members are invited to attend.

Ether Way

By Tom Wianett

KSFO 560	KLX 910	KSRO 1350
KFRC 610	KROW 960	KRE 1400
KNBC 680	KBS 1100	KSAN 1456
KQW 740	KVA 1260	KTIM 1510
KGO 810	KWBR 1310	KSMO 1550

Big Bear Bonanzas to the contrary notwithstanding, the major networks will broadcast a full schedule of programs this week-end.

TODAY

PROF vs. HERO: Eddie Albert and Barbara Bel Geddes star in the James Thurber-Elliott Nugent comedy, "The Male Animal," about Ohio State football and love (KQW—7 p.m.).

WORLD UNITY: Spokesmen of three major movements for a united world present their cases on "World Affairs Are Your Affairs" (KNBC—10:30 p.m.).

SATURDAY

WIND-UP: The sectional crucials to be broadcast this Saturday include the Big Game (Lee Giroux: KSFO—1:45 p.m.); Michigan vs. Ohio State (Bill Stern: KNBC—11:45 a.m.); SMU vs. Baylor (Harry Wismer: KGO—12:45 p.m.) Stern also expects to do periodic pick-ups from the North Carolina-Duke game.

SUNDAY

JIVE: The hot new team of Fred Allen and Burl Ives joins together in ballading on Fred's show (KNBC—6:30 p.m.).

MAKE-BELIEVE: "The Short Happy Life of Francis Macomber," a Hemingway highlight, is the story on NBC's University Theater (KNBC—12:30 p.m.). . . . Helen Hayes stars in "The Sobbin' Women" (KQW—7 p.m.). . . . Theater Guild on the Air presents "The Winslow Boy," with original Broadway cast members (KGO—7:30 p.m.).

FOOLISH PRESUMPTION: "Living—1948," the weekly documentary, takes up the powerful but capricious role of women's fashions in contemporary life and what, if anything, can be done about them. I shall listen solely on the strength of this excerpt from the script: "We do not foolishly presume to rail against fashion. Instead, we say only that in a world truly at a crossroad, let us strive to apply at least the equivalent of the time, attention and effort we give to the solution of our fashion problems to the basic problem of a peaceful community of nations that is so far more pressing." (KNBC—3 p.m.).

THRU COOPERATION OF SAM'L REVISION OF OUR PRICING SCHEDULE OF NORTHERN CALIFORNIA OUR CLOTHING AT PRICES WE FLATLY LOW ANY OFFERED IN THE INDUSTRY DRING—

NE WORSTEDS AND FAMOUS HARD-FINISH AND INTEGRITY—TWO-BUTTON D.B. LOUNGE THREE-BUTTON SINGLE-BREADED MODELS—now "vaughn-priced" 39.85

BODIED LUXURY FABRIC—DRAPES BEAUTI—TAILORED BY SAM'L CORT—now "vaughn-

RSTEDS SUPERB MATERIALS IN EXTRA MODIFIED HERRINGBONES—LUXURIOUSLY SON AT \$65—now "vaughn-priced" 49.85

value in men's and women's wear "in SMART CASH BUYER—\$5 lay-away separately selections—four stores—2169 shat—1112 k street sacramento—1438

VAUGHN

Studio Dramas Score Hit

WEIRD STUDENT-WRITTEN PLAY PRESENTED

By George Trigueros

Fantasy, romance and violent death were the diverse themes of University theater's interesting three-part studio program presented last night in California hall.

"Prayer of Thanksgiving," contrary to the implications found in its title, was not dedicated to the coming holiday. It was a unique fantasy about what a deceased actress thinks as she lies in state while her admirers pass by her bier. It was weird, at times ridiculous, but highly entertaining.

Janet Stelling played "The Famous One," an actress who commits suicide after discovering that she is losing her theatrical charm. Bob Beck, who wrote and directed the monologue, deserves praise for his novel project.

When Miss Stelling began she seemed as though she weren't sure of herself. But she eased up and made the most of her unusual role. She gave a fine performance in a strange type of play.

Scene one of Ferenc Molnar's play, "Lilom," was the lightest stage offering of the evening. George Hatch, in the lead as Lilom, gave a praiseworthy rendition of the virile hero.

Sara Stribling, as Julie, was convincing in her role of the innocent servant girl who has succumbed to the charms of the lusty gadabout.

Ann Howard, as Julie's friend, Marie, was entertaining in her performance of the exceptionally naive country girl. The villainess, jealous Mrs. Muscat, was played by Marilyn Norville. Her angry contenance contrasted well against the background of romance and happiness.

The third part of the program, scenes from Maxwell Anderson's "Winterset," was fraught with emotion and suspense.

Mio, played by Warren Saltzman, has come to avenge his executed father, but he is dissuaded by Miriamne (Elaine Glasberg). The final scene, reminiscent of the motion picture "Odd-Man Out," finds the lovers dying in a hall of lead. Ironically Mio has not carried out his revenge but he has found peace in death with his beloved.

Saltzman carried his difficult acting load well and was admirably supported by Miss Glasberg. The only fault with "Winterset" was that there was too much omitted between the scenes presented.

Iceberg, 1948 Style

Meet Cal's Welfare Council

Like an iceberg, it's seven-eighths under the surface.

That's the only accurate way to describe the ASUC Welfare council with its many "submerged" activities—an organization which originates many of the motions presented to Executive committee.

But the council does more than present motions concerning student welfare. It also acts upon many problems and conducts investigations from its headquarters in 402 Stephens Union.

The council is made up of a chairman, vice chairman, five representatives-at-large (who undertake special projects), a secretary and seven committees, represented by their chairmen or sub-chairmen.

Committees have continually come and gone on the council. During the '20's Orientations committee was the most important. Now the council's scope has been enlarged to include committees on labor, consumer problems, discrimination, the library, stu-

dent health, Sunday programs and special services.

With its activities reaching into many phases of student life, today's council is a far cry from that of 20 years ago, best known for its rules on blue book covers.

The main duty of the Students Welfare committee in 1918 was to enforce the honor spirit, heritage of student self-government and control "just before mid-terms and finals."

It also looked after the "general moral welfare of the student body" and decided who should receive complimentary bids to school dances. In 1929 the council investigated the lack of student interest in Charter Day and advanced recommendations for making the exercises more interesting.

Stormy battles have characterized the council's career. In 1936 it proposed a revision of the ASUC election system when certain "irregularities" were blamed on student inefficiency. That fall every second council meeting was opened so students could present criticisms and suggestions for campus improvements.

Fair Bear has always been an issue and Labor board was created to investigate complaints that students were forced to work for inadequate wages.

In 1938, upon the council's recommendation, the ASUC unanimously passed a motion forbidding campus publications to accept advertising from any store listed as "unfair." These stores were boycotted and the whole campus joined in the boycotting of an avenue restaurant until it accepted the Fair Bear standards.

Direct control of the four classes, by making them purely ASUC activities, was also advocated and all student activities and their relations to the ASUC were investigated.

Discrimination in housing and the collection of clothes for refugees were the main projects during the war years. The council sponsored all-University Labor days when women rolled bandages and men collected salvage.

In 1941 the council fought a Berkeley Chamber of Commerce resolution which banned "Communist and left-wing" Sather Gate meetings. It was also active in trying to repeal the anti-noise ordinance. That year it received its ex-officio non-voting seat on Executive committee.

Last spring Fair Bear was again a battle issue. When an independent Student Committee to Enforce Fair Bear picketed an avenue restaurant, the merchants repudiated Fair Bear. After one week, Fair Bear was reinstated and Labor Mediation council was set up to settle further contract violations.

Today, Welfare council's activities continue quietly and efficiently, affecting almost every phase of campus life—an iceberg, 1948 style.



Cancer Research Institute Requests High-Voltage X-Ray

The newly created University Cancer Research institute has applied for funds to purchase a two million-volt X-ray machine which was used to inspect bombs and shells during the war.

"It is hoped that the machine will be more effective than present ones in destroying cancers. However, little is known about its potentialities," Dr. R. L. Byron, Jr., assistant director of the institute, stated.

The machine, which has not been used for medical purposes as yet, will be installed in a New York City hospital next summer, where it will be used for the first time in cancer research.

"It is believed that if it is known why cancer is destroyed by X-rays, this may offer the key to a general attack on cancer either by improving the effectiveness of radiation techniques or making the cancer cell more vulnerable to destruction through radiation," Dr. Milton Friedman, therapist at the New York hospital, explained.

Lower voltage machines have been unable to deliver the power necessary to destroy most deep-seated cancers, he added.

The University Cancer Research institute, which is applying to the Damon Runyon Memorial fund for money to purchase the machine, has a similar one million-volt machine at present.

Foreign Information

A file of information on foreign schools is maintained by the International Information and Education sub-commission of NSA.

Schools listed are those approved by the Veterans' administration for GI attendance under the GI bill of rights.

Students have access to the file in the NSA office, 2 Eshleman hall.

GET YOUR FILM FOR THE BIG GAME NOW!

FILM :: FLASH BULBS
COLOR FILM

CAMPANILE
PHOTO SHOP
2435 DURANT AVE.

Going Formal?

Wear a second-glancing, delectable gown... from TINA'S lovely, luscious collection.

Tina's Gown Rental

Phone KELlog 3-1116



"the house of nine"

...a "one-size" shop bringing to the smart "little" women of San Francisco the most complete stock of new and beautiful size 9 dresses in town. Come in and see them... today.

Exclusively
SIZE NINE

ALSO SUITS & COATS

the house of nine

212 stockton st.
3rd floor
cor. geary

jewelry gifts
under \$10.

beautiful Gemex watch bands

Give Gemex watch bands this Christmas to your dearest friends. You will be remembered for your good taste and generous giving. We have a large collection in white, pink, yellow

A . . . \$7.50 D . . . \$5.25
B . . . \$5.00 E . . . \$7.75
C . . . \$7.50 F . . . \$6.00

All prices include Federal Tax

Gilbert Johnson

2155 SHATTUCK AVE.
at Center Street

U.C., U. of Hawaii Announce Marine Laboratory Merger

A hands-across-the-sea agreement has recently been completed between this University and the University of Hawaii for the operation of a marine laboratory to develop research and training programs in oceanography and marine biology.

Announcement of this scientific pact was made yesterday by President Robert Gordon Sproull and Acting President K. C. Leebrik of the University of Hawaii, following approval of the plan by the Regents of both institutions.

Commenting on the agreement President Sproull said, "There has been a long-standing and pressing need for extensive and coordinated research on problems of the Pacific. We of the west coast have a particular interest in that huge body of water—not only from the economic and the political points of view, but also from the scientific."

Adding further support to the merger, Keebrick commented, "The University of Hawaii is delighted to cooperate with the University of California in the direction of the research at the Hawaii Marine laboratory. These studies should contribute immeasurably to the welfare of the people of the Pacific area and to the extension of knowledge which is needed for sound planning for the future."

The laboratory is located on Coconut

island in Kaneohe bay just off the northeast shore of the Hawaiian island of Oahu. Its laboratory facilities recently were leased to the University of Hawaii by the Moku-O-Loe corporation, owning concern.

A gift of \$5,000 from Edwin W. Pauley, University Regent, and one of the co-owners of Coconut island, will be used to recondition buildings to provide additional facilities.

Students at the new central Pacific marine station will be selected graduate students from both cooperating universities. They will be chosen from those who a special interest in tropical biological research.

In addition, faculty and staff members from the Berkeley, Los Angeles and La Jolla campuses of the University will conduct special investigations there during the summer months or during leaves of absence.

To promote research, the University tentatively plans to set up a number of fellowships and research grants. These will include grants-in-aid of \$300 to defray costs of transportation; and fellowships ranging from \$1,500 to \$2,500 to cover transportation costs and living expenses. Tentative plans also provide for exchange of graduate students between the cooperating institutions.

Labor, Management Relations Discussed By Union Secretary

A form of industrial democracy in which labor and management share the responsibilities of production was advocated yesterday as the solution to labor-management disagreement by Jeffery Cohelan, secretary of the AFL Milk Wagon Drivers union, local 302. Cohelan spoke to members of the University chapter of the Society for the Advancement of Management on the subject, "Where and Why Management and Labor Agree and Disagree." Drawing from his own experiences, he presented a detailed social and economic background of present-day labor relations.

Extension Film

Two University Extension colored movies will be presented Tuesday, Wednesday and Friday in Wheeler auditorium.

"This Curious World in Nature," a film showing some of nature's mysteries, will be shown at 7:30 p.m. and 9 p.m. Tuesday.

"Olympic Odyssey," a film record of Olympic winter sports competition, will be presented at 7:30 p.m. Wednesday and Friday.

Tickets are 75 cents for each performance. They may be purchased at the box office before each showing.

Critic Discusses French Writers

"French literature today looks toward the future."

Denying that the present trend is toward the destructive nihilism exemplified by Sartre, Henri Barzun, author, lecturer and literary critic, cited examples of "literature of hope," constructive works by seven authors whom he has known personally.

Barzun said that seven authors—Barres, Gide, Proust, France, Roland, Peguy and Zola—were able to see hope for the future of mankind, or at least were able to advance new critical interpretations of man and his society. "This," he said, "is why they have not degenerated into the denial of existentialism."

Carrying his topic, "Literary Masters I Have Known," to the personal level, Barzun amused his Wheeler hall audience by descriptions of the handshakes of these literati.

"Marcel Proust," he said, "has the

puffy, moist hand of a sick man. In shaking hands with him, one can well feel the physiological decadence of the man."

Emile Zola's grip was described by Barzun to be like shaking hands with a hamburger.

Barzun then described the characteristics of the various writers, pointing out that their environment,

whether the grass-cud desolation of the provinces or the dillitant gaiety of Paris, influenced their writing to a great extent.

In their sentimentalizing about the past glory of France, or in their advocacy of a new universal Christian socialism to be inaugurated by the Gallic peoples, all these authors, said Barzun, are essentially nationalists.

NSA Subscriptions

Students may now subscribe to the NSA News. Over-all coverage of national NSA activity is presented in the monthly bulletin which is published at NSA headquarters in Madison, Wisconsin.

Subscription rate for an eight-month year is 40 cents. Students may subscribe at the NSA office, 2 Eshleman hall.

University Economics Institute Will Meet

The University Institute of Economics will hold a one-day conference Monday on the topic "Reporting World Economic Developments."

Presiding over the morning meeting will be Peter H. Odegard, head of the political science department. Chairman for the afternoon session will be J.B. Condliffe, director of the Teaching Institute of Economics.

Besides just relaxing and getting a snack at the Surf room in the University cafeteria, students will now be able to listen to their favorite records. A new juke-box was installed Monday afternoon, Richard H. Nedderson, residence halls supervisor, said yesterday.

Music While You Eat

CAFETERIA INSTALLS JUKE-BOX

Mountain service is provided from 7:30 a.m. to 11 p.m. and students are welcome to use the room as a lounge, he added.

"Times have become shorter," Nedderson said, "since the Sunlight room was opened for dinner." The Sunlight room is the third room now in use for the evening meal, the Camellia and Surf rooms having been in operation from 5-8 p.m. since the beginning of the semester.

With the opening of the Sunlight room for dinner, the catering and training table functions formerly occupying it have been shifted to the Tuquoise room.

Completion of the landscaping of the inner courts of the cafeteria this week finished the cafeteria's beautification program, Nedderson said.



THE WHITE HOUSE

RAPHAEL WEILL & COMPANY
SUTTER, POST, GRANT AVENUE
SAN FRANCISCO

Editorials in the Daily Californian reflect the opinions of the writer and make no claim to represent student or university opinion. All unsigned editorials are by the editor.



Friendly Spirit? Phooie!

The cartoon above shows to what extremes some people will go to try to imbue our students with the proper, friendly Homecoming spirit.

We asked the art editor to do up something on the general theme of Homecoming, and this is what we got. Personally we think it would be a lot better if the sturdy-you-know-what were giving the scrofulous Indian five in the teeth, but that's neither here nor there since we've got this drawing and we're stuck with it, thank you.

A cartoon like this is just what we've been led to expect around this time though, judging from past issues of this paper. At Homecoming time somebody always sits down and writes something about the Glory of the University and Friendly Spirit and such a cartoon is right in style.

This year, however, we've decided on a different theme and approach to Homecoming. We're going to junk all the pompous platitudes which are usually reserved for this occasion and come out with something a little more to the point. Rather than any hail-fellow-well-met-good-luck-Stanford-have-fun sort of thing, our theme is going to be, "Kill Stanford."

Succinct, eh?

There has been entirely too much talk lately about "be kind to our Indian neighbors," "they're weak and injury-ridden," "they've got a lot of spirit even though they lose all the time," ad nauseum. We're out to straighten everybody out on all this.

The last time we were kind to the poor Indians they sneaked through for three touchdowns in their usual treacherous fashion and made things generally unpleasant. As a result we had to spend three weeks absorbing the taunts of an unenlightened friend who seemed to think this was tantamount to a reversal of Harrison's victory at Tippecanoe.

This must not happen again.

Good feeling was all right in the days when we were the conference doormat, but there's no good reason now why we should not give the Indians that richly deserved come-uppance which they earned last year. The sooner we abandon any good feeling we might be harboring unwittingly toward the Reds, the sooner they'll be cleaned out of this area altogether. Like Mr. Hearst, we think a Red is the worst kind of a viper that we can nurse at our bosom. And a Red Indian is somewhere on the worst side of that.

Somewhere along in here we're supposed to welcome alumni, but we can't imagine an alumnus stopping to read this when there's so much else to do. So we'll just nod hastily and enjoin them to support our anti-Indian campaign. They probably share our opinion of Indians in general anyway, so there's no use belaboring the point.

Give voice to our battle-cry when you go out to the game tomorrow. Subordinate any humanitarian desires to let bygones be bygones or any flabby ideas about giving the underdog a break. Remember: Kill Stanford.

Watching the News

Labor's Role in Marshall Plan

By Wilma Rule, Telegraph Editor Emeritus
American labor's active, but little publicized role in administering the Marshall plan was given a pat on the back Wednesday by someone who can well do the patting—ECA Chief Paul Hoffman.

Hoffman, who spoke before the AFL convention in Cincinnati, commended the three branches of labor—CIO, Railroad Brotherhoods and AFL—for contributing several top officials for full-time work in ECA.

What was not heard, however, was exactly how and what role labor is playing.

Labor's ECA role takes several different forms.

In Washington, top labor men sit in on a Public Advisory board to help decide ECA policy. In Paris, labor's specialists run a labor division to see that formulated policy is properly administered. And in 16 Marshall Plan countries, unionists actually carry out and initiate new ECA policies favorable to the European trade union movement.

Moreover, labor's role has been that of an ever-present and militant watch-dog, ready to criticize and expose any conciliatory moves toward former fascists and cartellists.

Because of these assorted roles, labor has been very influential in implementing the three goals of the Marshall plan: industrial and agri-

cultural recovery, financial recovery, and stimulation of international trade.

Top labor officials who help formulate policy on ECA's Public Advisory board in Washington include James B. Carey, secretary-treasurer of the CIO, and George Meany, secretary-treasurer of the AFL who also heads the AFL's League for Political Education.

One of their main concerns has been strict adherence to the policy that no ECA monies are to be used to pay-off a Marshall plan nation's national debt, and that all ECA funds are to be used for concrete economic improvements.

The Paris group of American unionists form a separate division of the ECA's office of the Special Representative. The job of men such as Clint Golden, former vice-president of the CIO Steel workers and Harry Martin, president of the Newspaper guild, is to work closely with European trade unionists in all aspects of ECA.

Another function of the ECA Labor division in Paris is to recommend policies on use of manpower and on labor standards in Marshall Plan countries.

How do Americans unionists and European labor leaders carry out and initiate policies in the field?

There are at least two methods for doing this.

One is through joint industry-labor councils such as the Anglo-U.S. Council now functioning in Britain. Object of the council is cooperation of management and labor to raise production and to get war-worn industries operating again.

Another method is direct action through such organizations as the International Trade Union conference. The ITUC is comprised of unionists from America and Marshall Plan countries who meet periodically to discuss ECA.

At its July meeting the ITUC voted wholehearted support of the Marshall plan, and worked out a program whereby its members would work directly with ECA administrators in the field.

The ITUC further made it clear that it would never tolerate any attempt by America to interfere with already accepted policies of Western European nations.

As to recent criticism of the Marshall plan by American unionists. There is plenty of that. For example, Victor Reuther, the UAW's educational director, recently returned from Europe with this message:

"Leaders of unions are not being listened to enough in the Western zones of Germany. . . We are hurting our true friends—the democratic trade unionists—and aiding our enemies, former Nazis and Communists."

Recent Books in Review

From Ulysses to the Wake

By Harry Lawton

Esra Pound once remarked that James Joyce spoke—if not with the tongues of men and of angels—at least with a multiple language.

The publication of "James Joyce: Two Decades of Criticism" by the Vanguard Press marks an important addition to literature already written about that great naturalist—and also re-emphasizes Pound's point.

A comprehensive anthology of some of the finest critical essays written on Joyce, it contains writings by such foremost critics as Edmund Wilson, Frank Budgen, T. S. Eliot, William Troy, James T. Farrell, S. Foster Damon and others.

EARLIER WORKS

Beginning in categorical order with essays on Joyce's earlier works the reader is gradually prepared for essays covering the multiple phases of the more complicated "Ulysses" and "Finnegan's Wake."

The anthology should be read as a complete unit by readers unfamiliar with Joyce, who might be guilty of condemning his more abstruse works covered in subsequent essays, without first understanding them. Others may want to sample slowly like a warm Neuchatel wine such choice bits as Edmund Wilson's "The Dream of H. C. Earwicker."

The essays are not only stimulating and exciting to read, but are a gold mine of lesser known facts about Joyce. How many readers are aware that the "Dubliners" like "Ulysses" was modelled upon the Odyssey of Homer, and that each short story in that book bears a comparable relationship to some chapter in that ancient epic?

CLEAR POINT

In reading the anthology one point will become increasingly clear to the neophyte. Each essayist appears to interpret Joyce in his own peculiar vein, some seeing only underlying archetypes and myths, some the psychological import, and others the lyrical quality of his style. Beginning readers will plow through amazingly divergent essays in bewilderment, shifting and swaying between a maze of contrasting opinions.

The advantage inherent in the work over all preceding works on Joyce lies in just this contrast of opinions, however. Gradually the focus widens, and the reader realizes that in order to understand Joyce one cannot take any single essay too

literally. Joyce must be seen like a vast kaleidoscope, all of whose facets must be turned to the light to create the proper picture of the whole.

RAINTREE COUNTY

LATEST ADDITIONS TO THE STACKS: . . . The library appears to have received Ross Lockridge's "Raintree County" a bit belatedly as someone remarked last week. For a brief while the novel balanced on the top of best seller lists; the critics tore into it with greater venom than its faults warranted. They literally picked it to pieces, and the suicide of its despairing author found it a few months later at the bottom of the heap. It is true that deep similarities existed between "Raintree" and the works of Thomas Wolfe, yet the sincerity of the author was obvious.

The creations of such characters as the "Professor" outweigh any artificial flaws, and the many passages of almost mystical beauty will probably keep the book read long after current best sellers are being retailed

cheaply in Salvation Army book-shops.

"Jazz, A People's Music" by Sidney Finkelstein is a study of the origins and history of jazz from early Negro spirituals to modern innovations such as be-bop and progressive. Apparently as the cover indicates it is a good history—certainly my reservation has done me little good toward securing a copy.

Hugh Walpole called Graham Greene, "The finest English novelist of his generation." Superlatives are easy things for authors to come by these days, and though Greene may not be the finest novelist he certainly pounds out some of the most exciting of Albion adventure thrillers. His latest "The Heart of the Matter" measures right alongside his terrifying "Brighton Rock," and his sensitive study of cowardice in "The Man Within." The book is the story of Assistant Police Commissioner Scobie, a Catholic convert, who is married to a wife he no longer loves but whom he does pity.

Letters to the ICE BOX

Disgruntled

TO THE EDITOR: If both California and Oregon complete their schedules undefeated and no playoff can be arranged, one of these teams will be justifiably disgruntled over being voted out of the Rose Bowl. Therefore, the only logical solution would be to make this year's Rose Bowl game a double header: California and Oregon vs. Northwestern and Minnesota, the pairings to be decided by a drawing or by flipping a coin. Both of the big nine teams have impressive records, and as one only defeated the other by three points, either would be a suitable opponent.

—Norman A. Hyams

Bankrupt

TO THE EDITOR: The election seems to have left Students for Wallace clutching for straws like a drowning man. They are so bankrupt that they have to take over non-political organizations in order to hoist their line on the unsuspecting mem-

bership. It is doubtful that the majority of the Students for Wallace would approve these maneuvers, but then it is their responsibility to see that this doesn't happen again. The Student Workers Federation must be a student union, not a political football.—Robert Martinson

Scooped

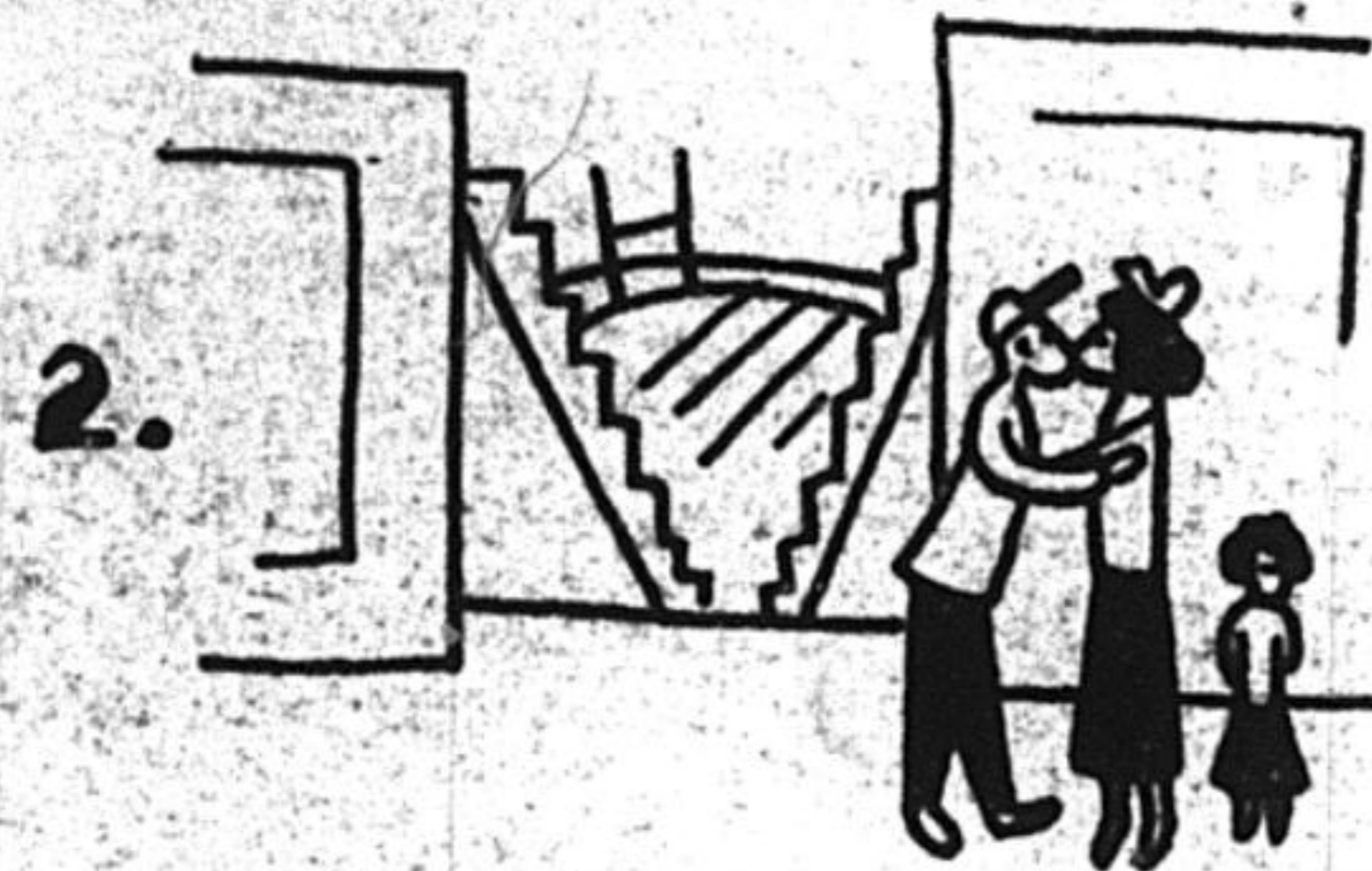
TO THE EDITOR: We would like to call your attention to the sports section of the Daily Cal, particularly that of the 17th of November, 1948. The article in question is entitled "Cal 145s Down Windups." It looks like the Berkeley Gazette "scooped" you on that one—the final score was 39-33, however, that worthy paper carried a much more accurate account of the game than you did. The Windups had the 39 while Bob See was high point man with 18 tallies. We know this to be fact as one of us played while the other rooted.

—Hal Hobson, Chuck Hobson

P.S. It would only cost you 5 cents to call the Gazette for complete sports coverage.



1.



2.



"Til death do us part."

Letters to the ICE BOX

All letters to the Ice Box must be signed and must include the address and/or telephone number of the writer. Contributions should not exceed 150 words in length in order to qualify for publication. Names will be withheld from publication only in instances where the writer fears reprisal for stating verifiable facts. Letters will be published only after being checked in person, by telephone or by mail for authenticity of signature. The Daily Californian reserves the right to edit any contribution whose length exceeds 150 words whenever space limitations so require. Letters which fail to conform to normal standards of decency and good taste as determined by the editors will be automatically edited or rejected.

Student Demands

TO THE EDITOR AND EDITOR FOR A DAY: I wonder if Leon Cohen would condemn the Communist persecution of students in Czechoslovakia as vigorously as he did that by the Nazis? Very doubtful. The Communist party line, which he has faithfully echoed, would not condone any criticism of the actions of Russian-dominated governments.

According to Cohen, American student must demand "honest" negotiations with Russia and repeal of the draft. We must demand an end to "American interference" in the affairs of other nations and "a policy of peace" from our government. He does not say who has not been negotiating honestly, or why we must make these demands.

He criticizes the American-supported Chinese and Greek governments without the slightest suggestion that there might be anything wrong with the Communists they are fighting.

Is this the best type of article that is being submitted to the Daily Californian, or are the editors failing to discriminate between objective analysis and pure propaganda?

—Russell Tuttle

The Editor for a Day column on this page—like the Ice Box—is open to all students without any restrictions other than those set down by normal standards of decency and good taste. It is therefore not our prerogative to censor, suppress or "discriminate" against articles which fulfill the requirements of these standards.—Ed.

Funds Wasted

TO THE EDITOR AND BOB LYHNE: In your story on Hawk Hyde's bullfighting you state that he "travelled 30,000 miles on assignment." With what organization? The Daily Cal? Where are the results of all this expenditure—more ASUC funds gone to waste?—Dave Stead.

We frequently send our reporters as far as Milpitas, partner, but this guy is not one of ourn.—Ed.

★ EDITOR FOR A DAY

By Walter Fitch

For many years, Channing club has been proposed for admittance into Interchurch council. For just as many years, Channing club has been refused membership in the organization. At one time, the constitution of the council required that an incoming organization must have the unanimous approval of the present members. Getting nowhere fast through this means, the constitution was amended last year to read two-thirds instead of unanimous. Still when it came to a vote, 40 per cent voted against the Unitarian group.

Due to limitation of space, it is impossible to present all the facts in the case. I will present a letter written to the council by Wesley foundation on the subject which expresses with fair clarity both its position and mine. I wish only to state further that if you agree with that which is herein contained that you earnestly endeavor to persuade your group to allow Channing club into the fellowship of Interchurch council.

To the Interchurch council:

These are times when we as Christians should be trying to emphasize those things which we have in common with other peoples and religions rather than stressing differences. Putting the emphasis on distinctions rather than on similarities, only breeds contention, be it in the world at large, or in ourselves.

It is easier, however, to practice on ourselves than to try to reform the world and indeed we would be wiser to do so, for it is gross hypocrisy to preach a concept that we are unwilling to practice ourselves. In practicing our Christianity, it is inconceivable that we should allow a discrepancy in theology to weigh against the admittance of another to our organization. Certainly the differences between Channing club and Wesley foundation are less than those within our own Methodist churches.

These are also times when the "One World" of Wendell Wilkie is trying to be achieved not only politically

and economically, but, more important, spiritually. The World Council of Churches, meeting in Amsterdam, was a step in the right direction. The fact that the Unitarians were not invited to that august body should be of little worth in consideration of the entrance of Channing club into Interchurch council. The mistakes of one organization should not be the excuses of our own.

If our purpose and reason for existing is really, as our constitution's purpose states, in the "furthering the spirit of Christian brotherhood through interdenominational fellowship," then it is high time we lost some of our bigotry and unequivocal dogmatism, and accepted the fellowship of any and all who wish to "unite in a desire to realize a full and creative life."

In view of these factors, Wesley foundation unanimously reaffirms its position in having cast its ballot for the acceptance of Channing club and, in the interest of breaking down the barriers of prejudice, of obtaining the fullest amount of unity among the various churches that is possible, and of embracing in our fellowship all who wish to partake thereof, earnestly enjoins the council to reconsider the admittance of our would-be fellow youth group.

It is with deep sincerity that we urge this and with deep remorse that we find it necessary. Yours for a bigger and better council,

Wesley foundation

ICE BOX . . . Lower Shelf

Housewife Fooled

TO THE EDITOR AND THE ICE-BOX ANTI-WALLACE FACTION: My congratulations to Mr. Emmes for his version of why the Wallace bid was so weak. My parents were among the first Wallace supporters and my sister was a delegate to the California State Convention of the Progressive Party—my sister who is a housewife and who has only a high school education. With all due respect for my sister and her ideals, it is not hard to visualize her being fooled into thinking she was backing something that she wasn't at the convention. Gradually I have watched half my family turn from an "America can do little wrong" attitude to an "America can do no right" attitude. And to think that they were all lured into the Progressive party thinking that they might help their country!—George E. Heuer

Biggest Blunder

TO THE EDITOR, BRUTUS HAMILTON, ET AL: If Oregon is sent to the Bowl as a result of Cal's "official" (?) attitude!!! it will be the biggest blunder in California athletic history. If we can't beat Oregon, we don't deserve to go!! Let's not stoop to the tactics of the Big 9. Let the champion go to the Rose Bowl!—Marvin Roewe, Vic Schwartz

Uproar Caused

TO THE EDITOR: At the SWF meeting Wednesday afternoon the legitimate previous membership of

the SWF refused to allow the "new members" to enroll before the election of officers for the year. The uproar which this caused proves beyond a doubt that most of the Students for Wallace people who came were not sincerely interested in organizing student workers and that alone. These people had been asked to join before but had declined to help until this important election meeting. Their goal is obviously political domination of a group whose membership has time and time again voted to remain non-political.

The many points of "undemocratic," "unconstitutional" and so on were incorrect and irrelevant to the real agreement: should the people who were trying to organize student laborers be forced to turn their organization over to a group which does not have the same intentions? All those who can put aside political views to organize a student union are welcome.—Carol Herndon.

TRAILER RENTAL

EXPERT WASHING & POLISHING

CARTER'S Jeep & Trailer Rental 1927 Shattuck. Be. 7-0650

IT'S HERE! . . .
1 HOUR
DRY CLEANING SERVICE
McFARLAND CLEANERS
FREE PARKING ACROSS THE STREET.
Corner of Grove Street and University Avenue



NOW PLAYING

in the Garden Court
NORVAL KNIGHT

AND HIS ORCHESTRA with GIL VESTER THE KNIGHTINGALES

NIGHTLY EXCEPT SUNDAYS & MONDAYS

The Palace Hotel

EDWARD A. RIEGER GENERAL MANAGER

MIDTERM SEMINARS

PHILOS 6A
(Pepper)

BOTANY 1
PHILOS 6B
(Strong)

SUN., Nov. 21, 7:30 p.m.

PHYSICS 4B
PHILOS 6A
HISTORY 17A
(Stamp)

MON., Nov. 22, 7:30 p.m.

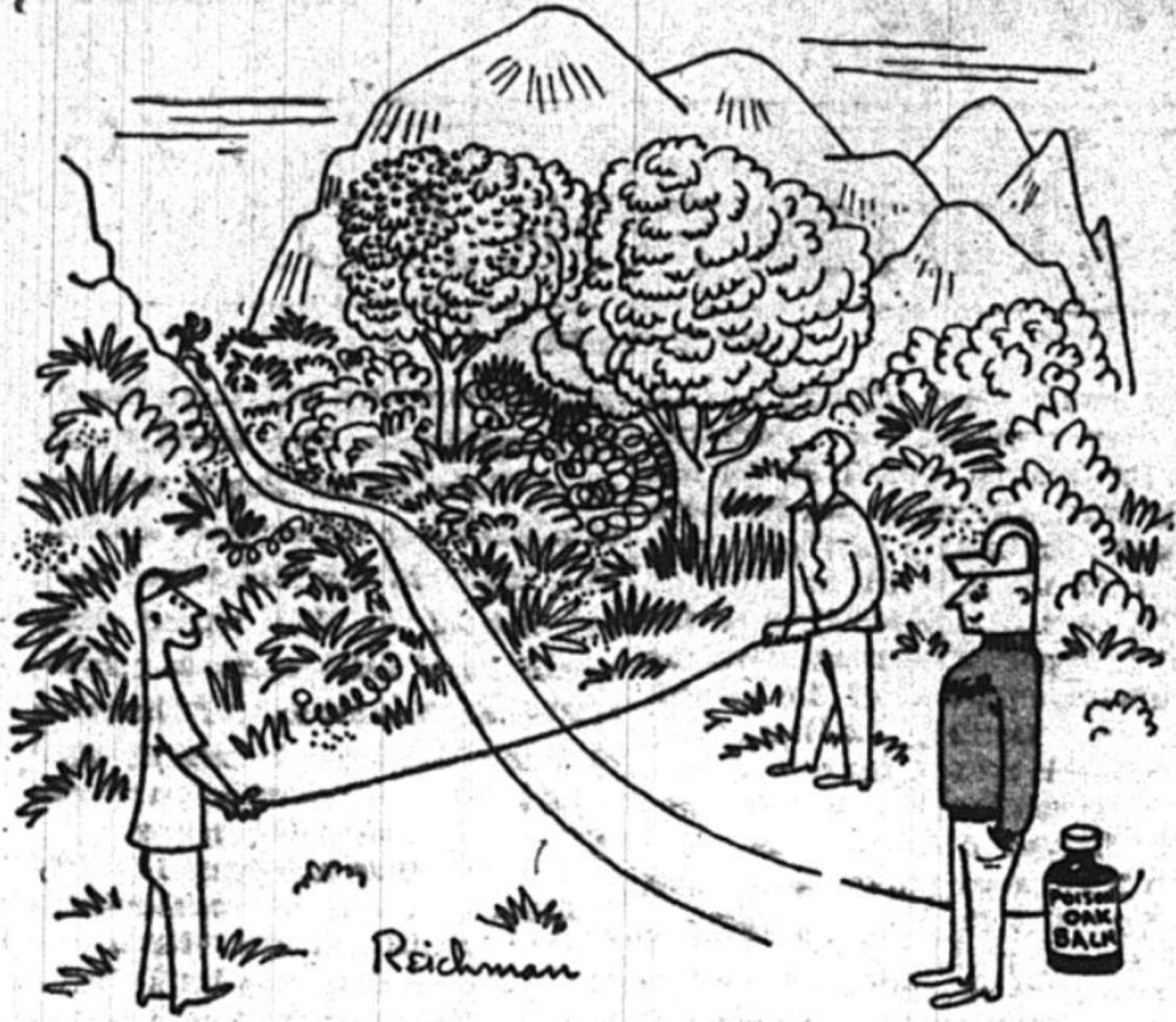
2-3 Hours \$2.00

MASSEY
2610 Bancroft Berk. 7-3402

SURE SAFE PROFITABLE



U.S. SAVINGS BONDS



(Continued from page 16)
WATERPOLO

minute halves for their Alma Mater. Starting at forward and goalie, the two Bears will be out to aid the team in its revenge battle over the team that handed them a 5-0 dunking one week previous.

Coach Scroth is among those who believe the Redman squad is capable of a five goal margin repeat but won't do it. He has sent the team through a rigorous week of offensive drill in the hopes that a certain percentage of their shots will clear the goalie's reach.

That seemed to be the center of trouble in last week's game, not to take any glory away from the sharp-shooting of high-point Harry Borchers and crew from the peninsula.

A possible drawback in the Bear defense is the question mark tabbed on Ron Lacombe and his broken nose. His play will be lost to the Bears unless protection is garnered for his anatomy.

Completing the lineup for the Cal squad will be King Waldo Cook and Wes Prsbrey at forwards and Herb Steiner and Don Fischer at the back spots.

Cal will have 13 members of its squad back next year. For many of them this was the first season in waterpolo, and that includes fundamentals. The game tomorrow will find very few people thinking of next year, however. The Wateraxe is in the offing!

Thor, Barger Provide Mural Boxing Action

The K.P. Koolers and Molar Maulers each scored six points to tie up their dual match yesterday in the Men's Gym boxing room. The Koolers and Maulers each won two bouts while the other two were draws.

Southpaw John Parham of the Koolers took the decision over Bob Deisenroth in the afternoon's opener. Parham of the 130 division retaining his undefeated record looked impressive winning this one. Parham's open style and powerful left hand were troublesome for Deisenroth. In the second round Deisenroth's lip began bleeding after several stiff flurries of punches by Parham. The third round slowed down considerably because both men were tiring.

In the 135 pound class game little Frank Davis of the Maulers lost to Bill Vanderwit of the Koolers. Vanderwit's vicious right hooks to Davis' face were the telling blows in this bout.

The bout of the day was between Howard Thor of the Maulers and the Koolers' Bill Barger. The fight was a real slugfest and ended in a draw. A lot of good punches were thrown in the first round, but the second round couldn't have been better. Barger received a cut lip while Thor's face was pummeled continually.

Thor threw some nice left jabs while Barger's right cross was plenty sharp too. The fans roared their approval at the end of the bout.

The Maulers' John Bartlett took the nod over Dwight Rush of the Koolers in the 155 pound class. Both were fast fighters and threw some good punches but clinches slowed down the fight.

Another 155 pound bout was between Jim Bryan of the Maulers and Hugh Dube rly. This was also a draw. In the first round Dube rly was staggered by Bryan, but Dube rly came back with his rushing attacks to even up the match.

Big Game FACTS, FIGURES

About tomorrow's Big Game: It is the 51st of the series, begun in 1892, the oldest rivalry in the West. California holds 19 wins, the Indians 23. California has scored 554 points, Stanford 552. Eight ties mark the Bear-Indian record.

California has scored the most points in a single game, 42, in 1921. Stanford's top accumulation is 41, in each of 1926 and '30.

Memorial stadium gates will open at 11:30 a.m. tomorrow. Game time is 2:00 p.m. Student ticket holders will have to present both registration and student body cards to be admitted to the rooting section.

Odds favor California at 5 to 1 or by 21 points. The California captain is Tackle Gene Frassetto, Stanford's Emery Mitchell and Marty Anderson are co-captains for the Indians. Mitchell will probably not see action.

Rose Bowl Showdown This Weekend

NEW YORK, Nov. 18. (UP)—The Rose Bowl showdown comes to college football this weekend in climactic contests which will decide whether it will be Northwestern of the Big Nine against California of the Pacific Coast conference in the grandpappy of gridiron spectacles on Jan. 1.

Northwestern and California were heavy favorites respectively to win their final conference tilts and receive the vote of their respective leagues. The Wildcats were picked by 13 points over Illinois and California by 21 over Stanford.

Oregon, also undefeated in conference play on the slopes of the Pacific, was expected to match California's victory as a 13-point choice over Oregon State. But reports indicated that if undefeated California moved past Stanford it would get the PCC vote as the West's New Year's day representative.

Northwestern gets the Big Nine vote as runnerup to unbeaten Michigan, a 14-point favorite over Ohio State, under the terms of the Big Nine-PCC contract which doesn't permit a Mid-Western team to go but once in every three years.

Michigan, California and Clemson, the Southern Conference leader which moved outside as a 33-point favorite over Duquesne, were the only undefeated and untied titans risking their records. Notre Dame and Army were idle.

Oklahoma had a chance to nail down the Big Seven championship as it moved against Kansas. Both clubs are tied for the lead but Oklahoma ruled a 18 point favorite. In one other conference clash, Missouri was picked by 20 over Nebraska.

The rest of the Big Nine schedule picked Purdue by seven over Indiana and Minnesota by 14 over Wisconsin. In other Mid-Western contests, Tulane ruled 27 over Cincinnati and Michigan State by 33 over Washington State.

Bruins Work Lightly

LOS ANGELES, Nov. 18. (UP)—The UCLA Bruins, three-touchdown underdogs for their game with Southern California Saturday, today ran through their final light workout in preparation for the Trojans.

Only Halfback Howard Hansen is a doubtful player for the Bruins' final game of the season. UCLA ticket officials said a crowd of about 90,000 fans was expected.

C-Notes

By Gordon Pusser

The sports staff wishes to announce that there's no truth to the rumor that a new coach is being sought to replace LOU "PAPPY" DELSOL, whose sports staff gridders lost their first game in two years when they dropped a 7-6 battle to the Hand Wednesday. . . This, despite "Goodbye Lou" signs which adorned the office yesterday.

Trick of the week: (From an A.P. release) Three plays later Camp made an 11 yard touchdown pitch which Camp caught with one hand to score. Wonder if he kicked the extra point?

Although Big Game tickets are silver in color, they should be gold. Avenue ticket merchants were quoting them at 55 bucks a pair yesterday.

Things that make you mad: Stanford's cocky assumption that they "Won" last year's big game. . . A statement in DON ENDSLEY's Palo Alto Times column that Stanford's CLEAN, SPORTSMAN-LIKE rooters will always win a victory over the VULGAR and OBSCENE California supporters. We'll see come tomorrow.

Things that make you sad: Those 312 hospitalized vets who will be watching the Big Game from their south end zone seats tomorrow. They played in an ever "Bigger Game" and lost.

Things that make you glad: The fact that the ASUC, too often accused of being overly agaricious, let those same vets in to the Big Game and all other California home games as well. . . The story of the little old couple who won a raffle for two Big Game tickets over in San Mateo. Class of '08, they were planning to come back to Cal for the first time in 40 years for the class re-unions but had despaired of getting to see the game. They almost cried in their happiness.

BOB RUBIN and staff have put out a 25th anniversary program that is well worth the 50 cent tab on it. . .

Two mighty football teams representing the California and Stanford bands will clash in their version of the Big Game at 4 p.m. today on North Field.

A double feature will be shown to the Bear players tonight. Not cow-boys and Indians we hope.



Ready and willing is California's Big-Game captain, Tackle GENE FRASSETTO. Frassetto, a senior, will be playing his last game for the Bears tomorrow, unless Waldorf's Wonders grab off the Rose Bowl bid Jan. 1. —ASUC Photo

Stanford Faces Cal Soccermen

California's powerful league leading soccer squad will participate in a Big Game of its own at 10 a.m. tomorrow on Edward's field when it kicks off against a rugged Stanford booting aggregation.

This will be the Bears' second clash with the Indians this season. In an earlier outing down on the Farm, California trounced Stanford, the only team to defeat the Berkeleyans last year, 3 to 1.

Coach Julius Schroeder is confident of another Blue and Gold victory tomorrow since the Bears have been constantly improving since their first win over the Cards. The Bear

mentor believes his squad, which is sparked by offensive standouts Left Half Oleg Sherbey, Center Forward Izzie Wainberg and Outside Right Tahsin Gensoy, is the fastest passing and running outfit on the coast.

Schroeder has announced that his starting lineup will consist of: C. Chow, goalie; Bob Anderson, right fullback; Malke Shafel, left fullback; Dick Tanaka, center half; Oleg Sherbey, left half; Jose Filloy, outside left; Pete Moreno, inside left; Izzie Wainberg, center forward; Kaya Apayden, inside right, and Tahsin Gensoy or Fernando Walker, outside right.

California, Oregon Set To Take Final Grid Flings

SAN FRANCISCO, Nov. 18. (UP)—The pigskin stage was set today for one of the most dramatic finishes in the long history of the far-flung Pacific Coast conference football races.

At two tiny pin-points on the far west map, 700 miles apart, two teams will take to the gridiron Saturday bent only on winning that coveted New Year's Day trip into the Rose Bowl.

In the Northwest it will be the once-beaten University of Oregon Webfoots, boasting one of the finest passing attacks in the land, against their traditional rival, the Oregon State Beavers. The game will be

played on the Beaver field at Corvallis.

In California, undefeated University of California Bears, 5-1 favorites, take the field against a Stanford university club that has been kicked around the PCC with monotonous consistency for the past two years. The game will be played at Berkeley, home of the Bears.

While California enjoys a better seasonal record than that of the Oregon Webfoots, their PCC records are about equal. In conference competition, the Ducks have won six, lost none; the Bears have captured five and have no defeats.



If others dance
On your shoes too,
Take them to RITZ
For repairs like new!

RITZ
Shoe Rebuilders
2410 Telegraph Ave.
1861 Solano Ave.
Ashberry 3-4619

Give Something Personal
This Christmas

A PROFESSIONAL
PHOTOGRAPH

BY

Bishops

of California

10% STUDENT DISCOUNT
(with ASUC card)

Call Templebar 2-7268

616 GRAND AVE
OAKLAND, CALIF.



FUN IN THE SUN WITH NO GLARE
"FERRARI-NICOLAUS OUTDOOR GLASSES"
Ground lenses sturdy, stylish frames
SPECIAL SALE \$3.50 to \$7.95
AN OUTSTANDING OFFER! SEE US AT
FERRARI-NICOLAUS
Dispensing Opticians
2514 BANCROFT WAY
Telephone THornton 3-9544
"At the edge of the Campus"

PATRONIZE CALIFORNIAN ADVERTISERS

THE DAILY CALIFORNIAN SPORTS

STANFORD'S ARGUMENT

Cards Out For Fifth Win

By Bill Swigart, Sports Editor, The Stanford Daily

Last year Marchie Schwartz was wrong. Midway through the season he had promised his team that they would win at least one game. As losses continued to mount Marchie stuck by his guns. Right up to the Big Game Schwartz believed that Stanford would win one game in 1947.

And what happened in that Big Game? Well, Stanford's 10-1 underdog team came within 2 minutes and 57 seconds of pulling the greatest upset in Big Game history. That's how close Marchie was to being right.

Before the present season opened Schwartz stated that his Cards would win "four or five" this year. To date Stanford has won four games.

Marchie is safe. Four is the minimum number he said we would win. But down here on The Farm there are more than a few of us who are convinced that in his own mind Schwartz is holding out for that fifth victory. **WON'T BE EASY**

We're not kidding ourselves that it's going to be easy. We don't expect to run up against a lethargic, overconfident Cal team this year. It's going to take a lot besides spirit alone.

But we do think that Cal can be beaten. And furthermore we believe that Stanford has a team that can do it.

This year's Indian team is fifty per cent improved over that of last year. Remember Wayne Erickson and Bob Anderson—the Indians who scored Stanford's three Big Game touchdowns last year? They're back, and so are Don Campbell, Marty Anderson, Dave Field, and Jim Nafziger. The soph line that manhandled California in the second half is virtually intact. **SOME HELP AVAILABLE**

But what is more important, they have help this year. Help from junior college transfers Bob White, Jim Castagnoli, Rupe Andrews, Ken Rose and Bill De Young. Help from Gordy White, Dick Abraham, Tom Shaw and Boyd Benson, up from last year's undefeated freshman squad.

And then there was help from Emery Mitchell. Up until the time Mitchell was carried off the field in New York, many of us thought Stanford would win the Big Game hands down. We're not quite so sure now.

Mitchell's running, passing, kicking, and blocking was the spark that set the Stanford attack in motion. Mitchell will be one of the co-captains tomorrow, but he'll watch the game from the bench. Whether Stanford can get along without him remains to be seen.

CAL SHOULD WIN

By any sane method of calculation California should win tomorrow, easily. The Bear line is heavier, the team is deeper at every position. For the most part the California players themselves have an edge in experience and ability. Cal's record is much the better.

Yet picking a Big Game winner is not a sane proposition. Ask the man who gave 30 points last November. He'll tell you.

Stanford will not be able to stand up and slug it out with California tomorrow. In the words of Marchie Schwartz "no team on the Coast can do that and come out on top."

NEXT YEAR

Football is on its way back on The Farm. Next year we figure we'll be able to meet the champ in his own corner and lick him. But not tomorrow.

Stanford will have to play it cute. The Indians will have to hit and run, and hope the counter punches miss. They'll have to gamble. If the gambles pay off they may win. If they don't, the score could go to any figure.

If the Indians catch on fire early, and score the first touchdown—watch out! Marchie might get his fifth win.

WOHSON?

Interceptions Mark Fiji Win Over Betas

In a cleanly played but hard-fought encounter Phi Gamma Delta came up with a 7-0 verdict over Beta Theta Pi on Union field yesterday.

Sterry Fagan wrestled a pass away from two Beta defenders, juggled it, and then slid out of the corner of the end zone to rack up the only TD of the game. Ken Wells was the passer, and his aerial to Jack Bowker was good for the conversion.

The score came early in the first half. Then the game settled down into an old-fashioned Domybrook with neither team able to advance any further than the opponents ten-yard line.

Eleven pass interceptions highlighted the defensive play of both squads. The Fijis maintained game control throughout most of the second half as the Phi forwards out-charged the Beta line.

John Goss and Ray Bartholomew were the standouts on pass defense for the Betas. Goss also heaved most of his team's aerials.

For the Fijis, Fagan and Bowker came up with some timely pass interceptions to thwart the Beta offense.

On North field Phi Delta Theta scored 14 points in the first half and then dug in to hold Pi Lambda Phi to 9 in the second half.

The winning touchdown for the Phi Deltas came on disputed play in which a pass was intercepted over the Phi Delta's goal and run the length of the field. The Pi Lambdas maintained that the whistle should have ended the play automatically, putting the ball on the ten.

Mural Results

- TOUCH FOOTBALL**
- Phi Delta Theta 14, Pi Lambda Phi 9
 - Phi Gamma Delta 7, Beta Theta Pi 0
 - Chi Psi over Zeta Psi (forfeit)
- BASKETBALL**
- Schmerks 43, Kings 38
 - Bed Bugs 40, Stiles Hall 21
 - P.E. Majors 23, Legal Eagles 19
- VOLLEYBALL**
- I House 2, NROTC 1
 - IZFA 2, Casa Blancas 0
 - Forestry 2, P.E. Majors 0
- TENNIS**
- Alpha Kappa Lambda 2, Alpha Delta Phi 1
 - Pi Kappa Phi 2, Theta Delta Chi 0
- HORSESHOES**
- Tau Kappa Epsilon 2, Sigma Chi 1

37 Stations Air Big Game

Thirty-seven stations, including a pair in Hawaii and five in Alaska, will bring the California-Stanford Big Game to all superhets in their respective areas tomorrow.

For local fans that got in the ticket line too late, Lee Groux and Mel Venter will handle the Berkeley classic over KSFO. Air time is 1:45 p.m.

This week the Big Game will also be included in the new CBS piecemeal type coverage of the nation's top games. The West Coast, however, will not be able to receive Red Barber's play-by-play.

All-in-all the Bear and Injun rosters should be heard through 17 California stations, 4 stations each in Oregon and Washington, 5 in Utah, 2 in Hawaii and 5 in Alaska.

For those skeptics that are coming to Memorial stadium tomorrow with one eye on the Bears and two ears on the Oregon-Oregon State game, it will be broadcast over KYA at about 3 p.m.

KFRC will air another of the coast's rivalries tomorrow, the USC-UCLA tussle in Los Angeles, at 2 p.m.

St. Mary's travels to Cod's country for its grid grind with Boston college. The Bay area will carry the game by re-creation over KROW at 12:45 p.m. tomorrow.

Another of Carroll Hansen's recreations is also due at 12:45 p.m. tomorrow for the USF-Villanova contest over KYA.

Troymen Busy

LOS ANGELES, Nov. 18. (UP) — Coach Jeff Cravath warned his heavily favored Southern California Trojans against over confidence and then had his three passing aces sharpen up the S.C. aerial attack today for their game Saturday with UCLA.

Jim Powers, George Murphy and Dean Dill connected with regularity in drills. The Trojans scored their lone touchdown to beat the Bruins last season on a Powers to Jack Kirby pass.

Kirby's Kaleidoscope

(Continued from page 16)

Even the Big Game can't keep us away from the crystal ball as we enter the final week of predictions (along with the Bear Brains) posting a record of 47 wins and 21 losses, an average of .691. So we ain't neat.

Michigan State over WSC—Spartans gunning for Big Nine admittance.

North Carolina over Duke—The choo-choo is right on time.

Northwestern over Illinois—And the Rose Bowl bid.

Oregon over Oregon State—Let's have a big twelve for the Beavers.

Penn State over Pittsburg—Not as easy as it sounds.

USC over UCLA—Troy has too much of everything.

SMU over Baylor—Another one for the methodical Methodists.

Minnesota over Wisconsin—Harry gets another headache.

More News On Varsity Grid

(Continued from page 16)

Swaner and Jackie Jensen, to no-one's surprise, are expected to be the motivating forces of the Cal attack. Stanford expects that, too, and has been building defenses to stop them. It is reported that they dumped one secret defense in mid-week. Maybe they'll try an 11, or 12-man line.

If the Indians do use some sort of heavy line defense, the Bears can be expected to pass, more so than in the early games of the season. In recent weeks Dick Erickson and Bob Celeri have been displaying an increasingly intelligent use of the pass and there is no reason for a decline.

As for the men of Marchie Schwartz, they will undoubtedly be throwing the ball all over the place. Their line averages about 15 pounds per man less than the Bears and also lacks running strength. This leaves them no alternative but passes, a strategy a lot of underdogs are wont to use, some with success. Emery Mitchell's loss hurt their passing and running games but they still have a trio of fair throwers—Aubrey Devine, Tom Shaw and Don Campbell.

PLATOON SYSTEM

Pappy will again use some sort of a platoon system of substitution and Bear fans are hoping he has found a cure for the pass defenseitis his defensive combinations have occasionally fallen prey to.

If the Bears kick off a different team, with the exception of Red Franz, will start for Cal. It has Norm Pressley and George Souza at ends, Herb Schmalenberger and Hank Borghi at tackles, Franz and John Baker at guards, Stormy Hileman at center and Tim Minahan, Bill Montagne, Will Lotter and Paul Keckley in the backfield. The offensive starting lineup appears on page 16.

Four of the Bear offensive starters are seniors. They are Frank Van Deren, left end; Captain Gene Frassetto, right tackle; Dick Erickson, quarterback and Swaner, right half-back. Of the defensive starters Borghi, Baker, Minahan, Lotter and Keckley are fourth-year men.

Other seniors are Dal Porto and Turner, Dave Hirschler, Herb Poddig, Staten Webster and Duke Zenovich.

CLASSIFIED ADVERTISEMENTS

<p>FOR SALE</p> <p>'36 CHEVY in excellent condition. Practically new tires, new battery, very clean. \$395. Bob. BE. 7-6486V. 11-19-3</p> <p>DELIVERY of '49 Nash coming, but can't afford it. Want it? List price. Call Ash. 3-6326. 11-19-1</p> <p>1941 PLYMOUTH coupe. Has to be seen to be appreciated. See at Signal Service. SHATTUCK at ASHBY. 11-19-1</p> <p>CHEVROLET '47 Fordor sedan. Fleetmaster. Full accessories; 14,000 mileage. \$1975. Call Room 739, International House. 11-19-3</p> <p>SONORA table model combination radio and phonograph. 1946 model. Excellent condition. \$40. TH. 3-0798. 11-18-3</p> <p>1935 PLYMOUTH coupe. 1940 motor. 2 new tires, new clutch. \$325. LA. 2-8185. 11-18-2</p> <p>THOROUGHbred Doberman puppies, male, and female, 7 weeks old. Very reasonable. Box 242. 11-18-3</p> <p>POINTERS, 6 weeks, 2 female, 1 male. Unregistered. Of excellent hunting stock. \$20, \$15, \$10. Hubbard. Rich. 9124, after 2. 11-18-3</p> <p>SAVE \$55. Current model laboratory microscope. Excellent condition. Mechanical stage. Call Ash. 3-8722. 11-18-3</p> <p>'46 NASH sedan, Deluxe 600. Motor just overhauled. New brakes, clutch, fuel pump, points, etc. Radio, seat covers, heater. Deated fenders gratis. "Skip," 1811 Bonita Ave. Berkeley. \$1400. 11-17-5</p> <p>BARGAIN: Like new. 35 mm RETINA I Kodak made in Germany. 3.5 lens excellent for color. Compur shutter. Every-ready all leather carrying case also lens shade. Call Room 739. 11-15-4</p>	<p>FOR SALE</p> <p>SMITH-CORONA TYPEWRITER, portable, case, in top condition. Less than year old. \$60. Call Ash. 3-5017, mornings. 11-17-3</p> <p>DON'T throw away those old neckties! Send us 2 to 6 and \$1.00. Receive same number, different, handsomely cleaned. Collegiate Tie Exchange, Box 96, Friley, Ames, Iowa. 11-16-5</p> <p>OKES, MAGIC. Fun for fraternities, parties, etc. We carry greatest fun and mystery range on west coast. California Magic Depot, 2491 Telegraph (by Dwight). 10-22-30</p> <p>FIRE: All makes. ASUC members and faculty, 15% discount. Woods Tire Company, 2013 University Ave. Ash. 3-2336. 11-16-24</p> <p>NEW BATTERIES: \$4 to \$5 allowed on old battery. ASUC, faculty members only. WOODS TIRE CO., 2013 University. 11-16-24</p> <p>SEAT COVERS. Beautiful plastic trim. Textile fibre. Reg. \$35. Students \$14.95. Tailored to fit. Woods, 2013 University. 11-16-24</p> <p>GREAT BRITAIN Olympics complete \$3.60 or only 4 great Britain, \$6.0. Globe Stamp Store, 2125 Center. 10-27-24</p> <p>AUTOMATIC record changer, \$12. Mercury II camera, case, filters and accessories. Call Ash. 3-6309. 11-17-3</p> <p>MODEL "A" '30 coach. Excellent motor, good body, paint, roof, seat covers. \$200. Baum, 2216 1/2 Bancroft. 11-17-5</p>	<p>ROOMS</p> <p>A NICE large clean room for two boys. \$17.50 per month apiece. BE. 7-3985R. 11-19-3</p> <p>TWO men students: Redecorated sunny room. \$50. Kitchen privileges. 2643 Hillside. TH. 3-1261 (evenings). 11-18-3</p> <p>2 SINGLE rooms for male students. Ten minutes walk to campus. Quiet place. Reasonable. Ash. 3-5454. 11-17-3</p>	<p>APARTMENTS WANTED</p> <p>ENGINEERING student and University employed wife need garden cottage, house, or apt. No children or pets, and we're quiet. Call Ash. 3-4900, Ext. 29, 8:30 to 5:00. 10-5-1f</p>	<p>ROOM AND BOARD</p> <p>ROOM and board for men. \$14 weekly. 2 groups of rooms available, near campus. 2430 College Avenue. 11-19-3</p> <p>SET-UP for three men. Large living room, fireplace. Excellent food. \$14. TH. 3-10764. 11-18-3</p> <p>ROOM & BOARD in approved dorm. Excellent food, nice room. Betty, Rm. 15, B.E. 7-4933 or Enid Ash. 3-5900. 11-17-3</p>	<p>TUTORING</p> <p>ENGLISH 1A-1B, also English for foreign students. Miss Tollmann, 1836 Euclid. Ash. 3-0091. 10-27-20</p> <p>TUTORING and SEMINARS. History 17A-17B. Also 4A-4B, 174A & 8A-B Recent History of the United States. Dr. Donald Wheaton, Phone Ash. 3-0256. 9-21-t</p> <p>TUTORING in any lower division Math, physics or Chemistry. Call Esten Buch (M. A. '30), ASH 3-9493, 7 to 7:30 P.M. 2433 Durant Ave. Rates reasonable. 9-16-1</p>	<p>LOST AND FOUND</p> <p>LOST: Gold Guard Ring. With approximately 12 alternately set diamonds and rubys on band. Phone Ash. 3-5861. 11-17-3</p>	<p>TYPING</p> <p>TYPING: Fast, accurate, neat and reasonable. Term papers, reports, thesis, etc. Mrs. Marier, Be. 7-0381. 10-21-30</p>	<p>TRANSPORTATION</p> <p>RIDERS WANTED: Driving to Salt Lake City for Thanksgiving. Leave Wednesday, return Sunday. Bruce. BE. 7-5131. 11-19-1</p> <p>WANTED: Round trip to Portland, Oregon, for Thanksgiving. Call Jim Stenberg, TH. 3-3726 after 5 p.m. 11-19-1</p>	<p>CHRISTMAS CARDS</p> <p>PHOTOGRAPHIC CHRISTMAS CARDS — 25 for \$1.00. Send 5c and your snapshot negative for sample. See before you buy. Christmas Greetings, P.O. Box 443C, Alhambra, California. 11-17-21</p>
--	--	---	--	--	---	---	---	---	--

RATTLE THE REDSKINS

Stadium Has 25th Birthday

By Gordon Pusser

There's a reason for those Big Game tickets being of a silver color. And that reason would be tomorrow's game, the 25th Cal-Stanford clash to be played in Memorial stadium since the big oval in Strawberry canyon was first christened with the 1923 clash between the two rivals.

It was just 25 years ago this week that 74,000 people, up to that time the largest crowd ever to witness a football game west of the Mississippi, jammed themselves into the spanking new bowl to watch a mighty Stanford team meet a slightly underdog California eleven.

True, the Bears had a team which was undefeated, in fact it was one of Andy Smith's Wonder teams with an unblemished record stretching back to 1919. But the Indians had a powerful squad, and besides, they boasted of a big blond fullback by the name of Ernie Nevers, who had been running wild on the Coast all year.

BEARS STAGE UPSET

When the final gun sounded, however, the Bears had the edge on the new scoreboards. The count was 9 to 0, which meant that Andy Smith had another unbeaten season to his credit.

This was the only fitting way the stadium could have been opened, for it was the stirring record of these same Wonder teams which served as the impetus of a drive for a new and larger playing field for the Bears.

The idea for the stadium was conceived in 1921, with students and alumni giving their unanimous support. The necessary funds were soon raised and Strawberry canyon was selected as an ideal location. The excavation work was completed in May, 1923.

As originally designed, it would seat 33,139 persons, but since then bleachers have been added to bring the capacity to 79,928. There are 40,000 seats between the goal lines and an additional 33,000 in the two end zones.

The giant time clock at the north end was installed in 1932 and was the first of its kind in the West. The official opening services took place the day before the 1923 Big Game, at which time it was dedicated in memory of those California heroes who lost their lives in World War I. It was one of the greatest monuments ever created to honor fallen soldiers.

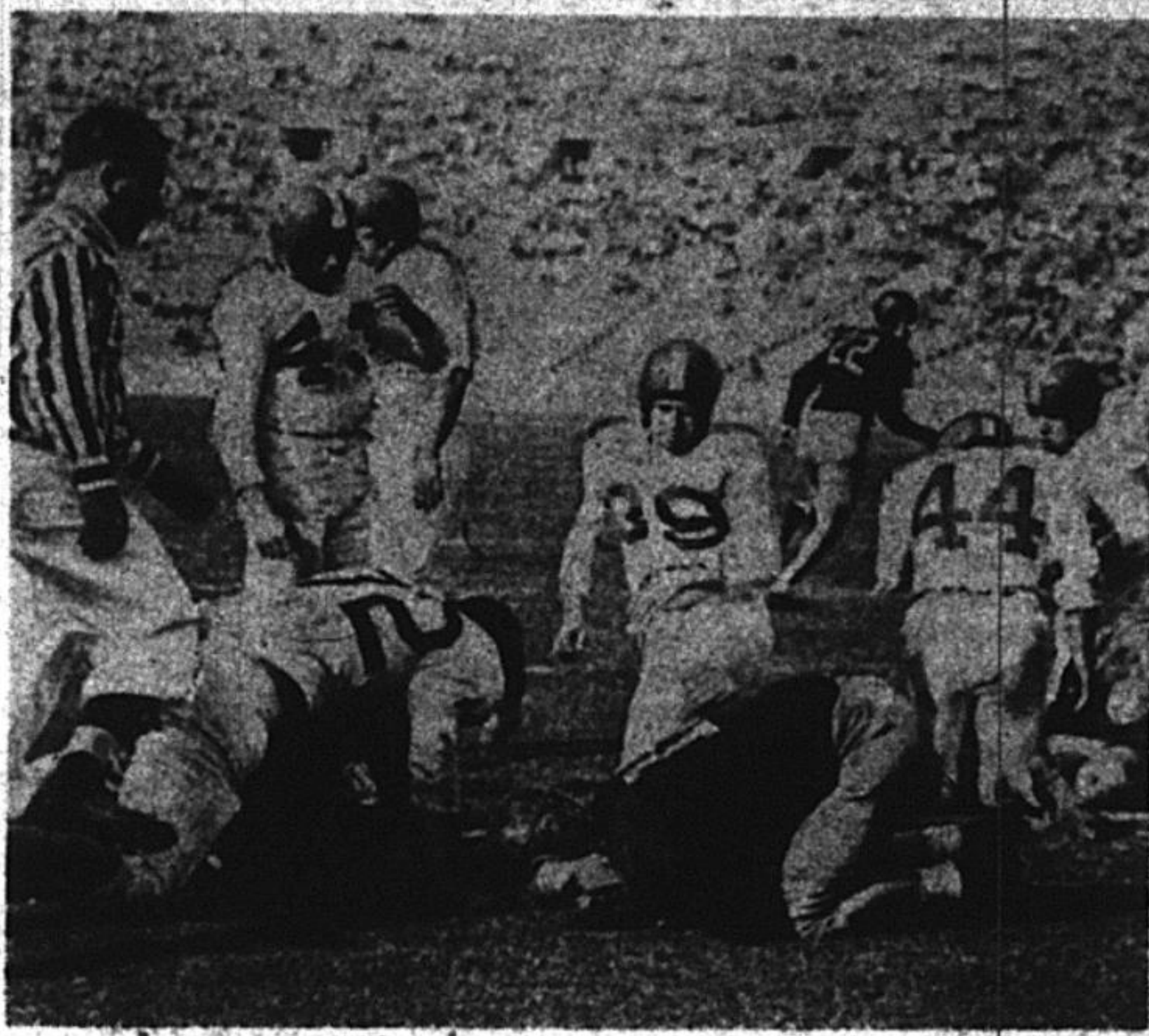
SPROUL SPEAKS

Robert Gordon Sproul, then University comptroller, gave the first address at the ceremony, which was attended by the members of all Bay Area military units, including the ROTC, Grand Army of the Republic, Spanish-American War veterans and veterans of World War I.

One of the more impressive parts of the stadium is the Andy Smith bench. Constructed at the same time as the stadium and located on the California side, the bench has inscribed on it the epitome of the great coach's philosophy: "We do not want men who will lie down bravely to die but men who will fight valiantly to live... winning is not everything. And it is far better to play the game squarely and lose than to win at the sacrifice of an ideal."

It was only two short years later that the revered leader lost his own fight to live. He was stricken with pneumonia and died in Pennsylvania on January 8, 1926. His body was returned to Berkeley, where it was cremated.

Then, on a somber January day as thousands mourned below, an airplane circled high over the California campus. Slowly Andy's ashes were wafted downward by the winds so that they became a part of the stadium he loved so well. And in that moment prior to the Big Game, just as the cleats of the players can be heard as they come rushing out of the far tunnel, it is said that the spirit of Andy Smith is there still, rooting for the Bears.



JACK SWANER, the P.C.C.'s highest scorer, is shown above "cradling" the ball after he plowed over for a touchdown in last week's WSC game, while a Cal defender blocks out a Cougar on the left. Others in the photo are Cal's BOB CELERI (22), and WSC's CHUCK ECKERT (43), EDDY COLEMAN (39), and GORDY BRUNSWICK (44). L&I photo

Traditionals Draw Nation's Grid Fans

By Lee Hirshland

It's THAT time of the year again.

Trains pulling out of Back Bay, chugging into Penn station, planes taking off from the Waco airport headed East, lines of automobiles headed West—the exodus has begun. Tomorrow marks the first of three big game days stretched over a two weeks period across the nation.

Often locally obliterated behind the Bay Area chatter are the traditionals of the South and East. Games that drew capacity crowds when the first pigskin was inflated and games of recent rivalry will all have one thing in common come national homecoming: it's anybody's game. The call to an interested part of our gridiron awareness is out, and so across the nation, by stadiums:

YALE MEETS HARVARD

The tables down at Morris's will be packed again to hash out the 1948 version of the oldest rivals in collegiate football, the Elis of Yale and the Harvard Crimson. New Haven will be the seat of this Ivy league classic tomorrow. In '47 it was the Bulldogs, 31 to 21, over their Cambridge hosts, a kind of final score not uncommon in New England scrimmage. Both schools have been dunned this year, but Yale has their head furthest above water. Yale has proven a big disappointment to pre-season pickers, however. Harvard has lost to Dartmouth by much less than Yale, and defeated Columbia, a team that downed the favored Yale eleven.

The upper Far-West will see a game that is often passed over by a lot of people. Does anybody realize that Oregon and Oregon State have been slinging pigskins at each other for 54 years? 1894 was the year of the initial OSC victory. Last year it was the Ducks in a 14-6 win. A repetition on score and statistics is promising. The city of Corvallis will turn out to see the once-beaten Rose bowl aspirant of the north-west and their Beaver hosts tangle in their 52nd meeting.

Fairly recent among the Nov. 20 clan are the Trojans and Bruins. UCLA has been trying for years to erase that 76-0 scar handed them by USC in their first get-together in 1929. This game will slip in national importance this year, but only this year. The same last year drew a crowd of 102,050 into the stadium, and for the past few years the winner of this contest has gone to Pasadena. Both teams have been downed on the coast and further inland. The Coliseum is the natural site for their 14th meeting.

Draw the analysis if you wish, for it's there in clear-cut black and white — Stanford-Cal and Duke-North Carolina, year after year. The Blue Devils and Tar Heels are sepa-

rated by 12 miles and a host of friendly animosity. Duke's Blue and White are out to avenge the 3-2 verdict that hurls over them. Three to two is the number of times Carolina has knocked a Duke eleven out of a bowl in the last game of the season, to twice for the Durham squad.

Carolina is some-bowl bent this year and is 13 points over its rivals, but Duke has the team this year to possibly call a halt to the Chapel Hill pride and joys. Duke has held down Georgia Tech, tied the Volunteers, and rolled over the Navy, while Charlie Justice calls plays for one of North Carolina's most memorable elevens, which all began by a 34-7 thumping of a good Texas Longhorn. To show the feeling of this big game, Carolina has for years ended every yell at every game in the season with "Beat Duke."

VOLS TROD BLUE GRASS

The only time a Tennessee Volunteer is allowed to tread on the blue grass of Kentucky, and then not hard, is tomorrow. The big game between states is more renowned in basketball than football, but always deserves a tune-in. It should be Tennessee all the way tomorrow, especially if they play the game with the same team that sent Georgia Tech out of the unbeaten ranks a few weeks back. Kentucky found their greatest consolation in a win over Marquette and a tie with Villanova.



Perhaps the man pictured above is not an All-American in the eyes of the world, but he was as big a hero as they come when he took Jackie Jensen's pass and scampered 60 yards to score and win the 1947 Big Game. The catch and run took place with less than three minutes left to play and climaxed one of the most thrilling of all Big Games. The man, of course, is PAUL KECKLEY.

Bear Card-o-Scope

CAL, INDIAN STARTING LINEUPS COMPARED

By Walt Winfield

LEFT END

Frank Van Deren

Van Deren has been playing good offensive ball all season. He is 6 ft. 1 in., 197 pounds and a one year letterman. A speedy, powerful player, his pass receiving has been exceptional. George Souza has been backing up the position defensively.

Laakso, 181 pounds, 6 ft., has one year of experience with the junior varsity and has been on the receiving end of a good many aeriels this season. He also is a power on defense. Gene Martin and Bob Ghilotti also add to the strength of this position. Give edge to Cal.

Al Laakso

LEFT TACKLE

Jim Turner

Turner, the largest man on the squad, stands 6 feet 4 inches, weighs 235 pounds and is a two year letterman. He is fast for his size and although he has been sidelined by a knee injury received in the Washington tussle should be ready to spark the Bears once again. Jim Cullom adds plenty to this tackle spot.

White, up from the Indian's frosh eleven last year, has shown great ability thus far. His defensive work, especially in the S.C. game, has been of high calibre. Whit Budge, regular from last season, has also had notable games in his career. Edge to the Bears.

Gordon White

LEFT GUARD

Jon Baker

Weighing 205 pounds, standing 6 feet 1 inch, Baker is a tough, rugged, experienced player. He is a three year letterman and is outstanding both on offense and defense. He has played great ball this year and rates up with the best of them. Ray DeJong backing up Baker, especially on defense, is also a standout among guards.

McKittrick is 6 feet, 191 pounds and is a one year letterman. He is an exceptional blocker with a full season of experience, having played as a regular on last year's edition of the Cardinal eleven. Bob Rohrer has been sharing the position with McKittrick. Rohrer looks very good, but margin to Cal.

Jack McKittrick

CENTER

Doug Duncan

A two year letterman with 195 pounds in a 6 feet frame is a statistical view of Duncan. He is strong on offense and can open up holes and lead plays with much skill. Stormy Hileman usually is the defensive center. Hileman is terrific at backing up the line.

Castagnoli is a transfer from Vallejo college. He stands 6 feet and weighs 209 pounds. His defensive work is the best part of his game. The S.C. game was probably his best this season. He recovered three S. C. fumbles to halt Trojan marches and was in on a good many tackles. Dick Abraham, up from the frosh, looks good too. Position seems to be a tossup.

Jim Castagnoli

RIGHT GUARD

Rod Franz

All-American Franz is the stalwart of the Bears' forward wall. He weighs 205 pounds and is 6 feet 1 inch tall. Very steady. Herb Poddig gives depth to the position.

Fix weighs 201 pounds, is 6 feet 3 inches, and is a one year letterman. He was a regular last season but lacked experience. Now he is a seasoned performer and deserves the spotlight in the Indians' front rank. Edge to Cal.

Don Fix

RIGHT TACKLE

Gene Frassetto

Strong, hard charging and extremely dependable is Frassetto. His 215 pounds and 6 foot structure enable him to make many tackles and bust up a lot of plays. Very fast for his size. Big Hank Borghi gives plenty of depth to this important post.

Rau, a 201 pounder and standing 6 feet 2 inches, adds a lot to the Indians' line. He is big, aggressive and experienced. Superb on defense. Atherton Phleger shares the position with Rau. Phleger played a lot with the '47 Indians. He is also big and plenty capable. Nod to the Bears.

Al Rau

RIGHT END

John Cunningham

Six feet 3 inches, 230 pounds of muscle is Cunningham. He is a rugged, driving charger. His pass receiving has been of good quality all year. Norm Pressley, strong defensively and speedy, gives strength to the position.

Mervin, 6 feet 1 inch and 189 pounds, is a good, solid, experienced end. He is a one year letterman, having been a starter on last year's team. Ken Rose, an outstanding transfer, helps support the position. Edge to Cal.

Dan Mervin

QUARTERBACK

Dick Erickson

The Bears' steadiest field general is Erickson. He is 6 feet 1 inch, 175 pounds and a two year letterman. A good signal caller and passer, he has directed most of the play this season. Bob Celeri trades off with Erickson.

Devine, 5 feet 10 1/2 inches, 170 pounds and with 2 years of varsity experience, is one of the top Indian signal callers. His southpaw tosses have improved greatly and his signal calling is good. Don Campbell is also a top-notch quarterback. He is a good ball-handler, passer and is strong defensively. He is on a par with Devine and may get the starting nod by game time. Slight edge to Stanford.

Aubrey Devine

LEFT HALFBACK

Billy Main

Little Billy Main, only 165 pounds and 5 feet 8 inches, is a great, speedy ball carrier. He is an excellent blocker and a good defensive player. This is his third year on the Varsity. Paul Keckley ably backs up Main. He also is the small, fast type of ball carrier. Keckley's catch of Jensen's aerial for the winning score in last year's Big Game was one of the highlights of his career.

Turriziani is also small. He weighs 175 pounds and is 5 feet 10 inches. He has improved greatly since last season and has developed into a good ball carrier. Bob Anderson has also played good ball for the Cards this season and probably will see a lot of action in the game. Another vote for Cal.

Al Turriziani

RIGHT HALFBACK

Jack Swaner

Big blond Swaner is one of the top ball carriers on the Cal squad. He is 5 feet 11 inches and weighs 195 pounds. His power-running has been sensational this season and he is among the top scorers on the team. His defensive work is also creditable. Staten Webster, a quick opener specialist, has been quite effective this season to bolster the position.

White has been a surprisingly good runner for the Indians. He was an unknown at the start of the season but showed good qualities. He is a shifty, elusive speedster and hard to tackle. Jim Nafziger and Mickey Titus also look good. Edge to Cal.

Bob White

(Continued on Page 14)