

# The Daily Californian

Vol. 183, No. 71.

Berkeley, California, Wednesday, January 8, 1964

THornwall 8-4800, Ext. 3932

## Test Ban Treaty— Backward Step for U.S.

BY DON CRAWFORD

The nuclear test ban treaty and its implications will lead to political controversy in this election year. But University students seem disinterested.

A tiny crowd of 50 appeared in West Pauley Ballroom yesterday to hear Paul Seabury, University associate professor of political science, present his view of the treaty's implications.

Seabury began his discussion by pointing out that a prevalent concept sees the treaty as a "first step" toward something else.

"A first step usually means you're learning to walk . . . but doesn't mean you're walking in any particular direction," he said.

According to Seabury there are two categories of first stepness in this concept of the treaty.

First, it is regarded as a first step towards general and complete disarmament. The flowing language of the preamble to the treaty leads to this conclusion, he said, but the actual text of the treaty barely mentions such further steps.

Moreover, he added, spokesmen testifying before a Senate hearing on the treaty barely mentioned these aspects. The congressional hearings had a little of the aspect of the administration presenting an agricultural measure to congress and then hiding away the Secretary of Agriculture so he couldn't testify and spoil chances of getting the bill pass, Seabury said.

Second, the treaty is viewed as a first step toward improving diplomatic relations between the western blocs and the USSR.

The view is "since the powers agree on something, then maybe they can agree on something else. The treaty is looked at as a kind of nature's remedy for international diplomatic constipation," he said.

Seabury said there is uncertainty about which of these two possible paths is most important.

The treaty as it now stands, he said, is incomplete because it does not control all types of tests (it permits underground testing) and is in fact a diplomatic setback to the U.S. because the long-held U.S. demand on open inspection has been rejected by the Soviets.

Thus, the first step is actually a backward step for this country, and any further agreements must involve a return to the U.S. position demanding inspection systems, Seabury said.

In discussing what he terms the treaty's threats to this country Seabury agreed with Edward Teller, who said two months ago in the same room that the treaty is actually a threat to western unity.

Seabury asserted, "Further U.S.-Soviet agreements could weaken our thermo-nuclear commitment to protect Europe and cause the European countries to seek their own nuclear weapons.

"Our collaboration with Russia might aggravate Europe and challenge it to take DeGaulle's independent attitude. The western community might break apart like an iceberg in the warmth of the new conditions of agreement," he said.

What paths lie ahead for the U.S.?

First some strategic principles must be formulated in the interest of peace and of the democratic worlds. A principle he called "Seabury's law" states there will be "mutual renunciation of the not yet existent."

By this principle, "one gives up those things not yet developed, and this would lead to the prospect of a fruitful treaty," he said.

For example, the treaty could be extended to large geographical areas where nuclear weapons

(Continued on page 3)



—Daily Cal Photo by Ron Enfield

PAUL SEABURY

On the implications of the Test Ban Treaty

## A Window, Rope And Imagination

BY PEGGY KRAUSE

Have you ever tried to get rid of a body?

A zoology student has come up with a good plan:

First, drag the body across campus to the Life Science Building (west side) at 3 a.m.

Go to the large window well, tie a rope to the railing, tie the body to the rope; lower the body by means of the rope, into the well. Then jump down yourself. Untie the body and push it through the open window. Jump in the window yourself. You and the body are now in the boiler room of LSB, one flight of stairs down from the incinerator. Carry

the body up the flight of stairs to the incinerator room.

The student, who has a part time job in the zoology department, breaks into LSB this way (without an extra body, of course) about once a week. He likes to finish studying before he cleans up the lab.

The first time he broke into LSB after Judy Williamson's death he saw a rope tied to the railing. On the rope were two or three brownish-red spots.

"I pulled on it to see if it could support weight and I decided it could," the student said.

A few days later he read the

(Continued on page 3)

## Darwinist Huxley Opens Galapagos Island Talks

Noted British biologist Sir Julian Huxley will open the Galapagos Islands Symposium with a talk on "Charles Darwin and the Galapagos Islands: the Origins of the 'Origin of the Species,'" at 8 p.m. tonight in Wheeler Auditorium.

Huxley, the brother of novelist Aldous Huxley and grandson of the 19th century Darwinist Thomas Henry Huxley, is honorary president of the Charles Darwin Foundation for the Galapagos Islands and a former director general of UNESCO.

A resumé of the Galapagos International Scientific Project will be given by Robert L. Usinger, professor of entomology. Victor Van Straelen, president of the Charles Darwin Foundation for the Galapagos Islands and honorary director of the Royal Institute of Natural Sciences of Belgium, will also speak.

Fee for the entire University Extension symposium is \$16. Tickets for tonight's session will be on sale at the door for \$2.50.



SIR JULIAN HUXLEY  
On Sir Charles Darwin

## Darwin Trip Spurs Debate On Evolution

Charles Darwin, whose historic voyage to the Galapagos Islands in "The Beagle" is being repeated this spring by the University, drew fire from Max Rafferty yesterday.

Rafferty, in turn, drew fire from a University professor for his remarks.

As State Superintendent of Public Instruction, Rafferty said he will recommend some changes be made in California State textbook discussions to the Board of Education.

Although Rafferty did not disclose his plans, he gave his opinion of textbook treatments of evolution at last month's board meeting. Evolution, he feels, should be taught only as a theory—not as a fact.

Karl E. Schevill, temporary Director of Teacher Education here, charged Rafferty was reviving a dead issue to gain personal publicity.

The question of teaching evolution in public schools was raised in the State Legislature last year, and a proposal to ban teaching evolution and natural selection as fact was rejected, Schevill said.

"I support their action," he added.

Calling Rafferty "one of the best known Republican figures in California," Schevill suggested he may be considering the governorship as a potential office for himself.

Rafferty raises these and similar issues to attract attention, Schevill said. "To become a political contender one should keep his name on the front page as often as possible," he added.

Schevill also objected to the claim of two Southern California women that a literal belief in divine creation should be given as much consideration in public schools as atheists receive from the Supreme Court.

It's an attempt to mix religion with education, Schevill said. "It's a question of religious belief versus scientific fact."

## Newest Judy Lead Fizzles

BY RODGER MARCH

Investigation diminished the strength of another lead in the Judith Williamson case yesterday when Oakland police heard the full story of an attempted rape by a man who claimed, "I killed Judy Williamson."

The would-be victim, a 21-year-old former University student, told police she was showing a man in student attire her apartment which she intended to vacate.

## Missing Coed's Classmates to Be Interviewed

All University students who knew missing coed Judith Williamson and all members of the classes in which she was enrolled when she vanished Oct. 29, 1963, are asked to submit to interviews by the Alameda County District Attorney's office, University police announced today.

Interviews will be held in Room 2, Sproul Hall, between 10 a.m. and 6 p.m. tomorrow and Monday, Jan. 13.

The request has been read in Judith's German and zoology classes, and will also be made in chemistry, speech, and social dancing classes which she attended.

The Albany Police Department commented that interviews with other people who had known Judith have been very helpful, and they will continue as long as new information is gained. No specific facts have been turned up, but the inspectors are learning more and more of Judith's habits and attitudes.

Explaining the amount of time devoted to these interviews, Inspector Art Smith of the Albany Police said, "Someone, somewhere has the information we need."

During conversation in which the man described himself as a Marine convalescing from wounds received in Viet Nam, he grabbed her, bound her mouth, threw her to the floor, and boasted of the co-ed slaying.

In the ensuing struggle, the woman was able to tear off the gag. She faced her attacker and asked, "Did you really kill Judy?"

He released her and admitted, "No, I just wanted to frighten you."

She ran to the door, opened it, and told him loudly, although without screaming, he had better go. He ran out, and has not been seen since. Police stated the woman's intelligence and presence of mind probably saved her from harm.

Although efforts are being made to find the man, police agree the woman's interpretation of the statement is correct and it was intended only to scare her.

Preliminary investigation of the suspect, who mentioned the name Richard, led to the suspicion that

(Continued on page 3)

**BEARS**

**COEDS! Big Sale of sweaters 'n skirts at Roos/Atkins! Come scoop up some of these smashing, dashing separates at a mere 10.99 per! They're worth much more . . . all beautifully styled. The Sweaters: cardigans, pull-overs, imports. The Skirts: pleated, wrapped & sheath-styled. Since you live in sweaters and skirts, don't pass up this opportunity to build up a whole wardrobe. Run right down to Roos/Atkins!**

**ROOS/ATKINS**

IT'S  
BIG

IT'S

IT'S

# ROOS/ATKINS

## JANUARY CLEARANCE

# SALE!



Scholars take heed! Get your A in Econ the easy way...come to Roos/Atkins and partake of the great savings on finest quality apparel for young men. Now during our big January Clearance is the time to prove that you know when to buy! Take action now!

### MEN'S MR. WHITE SHIRTS

- \$5 Cotton broadcloth with spread collar, french cuffs **3.99** 3/for 11.75
- \$5 Button-down collar, Ivy Style, in cotton oxford cloth **3.99** 3/for 11.75

### UNDERWEAR & PAJAMAS

- 1.50 T-shirts, crew or V-neck **1.19** 3/for 3.50
- 1.65 Patterned boxer shorts **1.19** 3/for 3.50
- 2.50 Boxer shorts, Dacron/cotton **1.99** 3/for 5.90
- 5.00 Pajamas, drip dry cotton **3.99** 3/for 11.75
- 5.00 Pajamas, cotton flannel **3.99** 3/for 11.75

### MEN'S SUITS

Fine quality men's clothing from current stocks greatly reduced—newest styles, superb tailoring! Famous names regularly 69.50 to \$125

**\$44 \$61**  
**\$78** *Plus no charge for alterations!*

### SAVE on MEN'S SOCKS

- 1.50 Blue Top imported wools **1.19** 3/for 3.50
- 1.00 Heavy rib Nylon stretch **79¢** 3/for 2.29
- 1.25 Orlon/Nylon stretch ribs **99¢** 3/for 2.95
- 1.50 Hi-Bulk Crew Orlon/Nylon stretch **1.19** 3/for 3.50

### MEN'S SPORTSHIRTS

- NOW **2.99** 2/for 5.85    NOW **4.45** 2/for 8.75
- NOW **4.95** 2/for 9.75    NOW **5.95** 2/for 11.75



### Now save big on SPORTCOATS

Superb choice, take advantage! Regularly 39.50, 49.50, 59.50

NOW CUT TO  
**\$31 \$41 \$51**

### MEN'S SWEATERS

Broken sizes of finest imported & domestic pullovers and cardigans  
NOW **9.95 13.95 19.95**

### MEN'S JACKETS & CAR COATS

Excellent selection famous brands-reg. much higher—now cut to clear!  
NOW **14.95 19.95 24.95**

### Your chance to stock up on MEN'S SLACKS

Prices slashed to reduce our huge stocks—pleated, unpleated, ivys, Continentals, many fabrics & colors

- Were 18.50    NOW **\$15** 2/for \$28
- Were 22.50    NOW **\$19** 2/for \$36
- Were 27.50    NOW **\$23** 2/for \$44

**SUPER/CHARGE!**

Buy now & make minimum monthly payments!

THE CAL SHOP \* 2530 BANCROFT WAY

ROOS/ATKINS

## Incinerator Possibility Proves Improbable

(Continued from page 1) newspaper theory that Judy's body was burned in the incinerator. The theory was refuted by police who claimed there was no

way to get a body across campus unnoticed during the day, and no way to get into LSB at night.

The student, trying to be helpful, called the campus police and related the story of the rope. "They were quite interested and took down my number," he said. The police called his home twice but he was not at home either time.

"I hear from someone in the zoology building that a policeman came with a list of people he wanted to talk to and I was on the list, but they haven't caught up with me yet. And it just so happens I'm leaving for South America on Friday (with the Galapagos expedition)."

The police sifted the contents of the incinerator and found nothing.

A Campus Police Department spokesman said "We checked the building out."

The rope is still hanging from the railing.

## Search on for Man Claiming Judy Murder

(Continued from page 1)

his conversation concerning his military exploits is equally false, although a thorough check of the Bay Area military installations has not yet been made.

She is certain of the attacker's appearance, but when shown the Oakland police files on known criminals of this type, she was unable to find his picture.

The Albany police were notified of the woman's statement, but have not yet been able to question her. When asked if she would be shown the composite picture which has been made of the suspected abductor of Judith Williamson, Albany police inspector Art Smith said a composite of the Oakland suspect would be made by the Oakland police, and the two drawings would be compared.

## 'Seabury Law'—New Concept May Lead to Successful Ban

(Continued from page 1)

do not exist and to outer space. Countries could cease development of weapons not already developed. "It is easier to give up what one does not have," he said.

Concern with the extreme positions of complete disarmament, on one hand, and a drive forward in the arms race on the other, weakens the U.S. position, he said. "We are trapped in the second, third and fourth steps by those who see a betrayal of American interests in not pressing forward in the arms race as well as by those who desire total disarmament, which can never be in the future."

The second principle Seabury calls the law of the primacy of politics over weaponry. He said, "A treaty should lead not to the estrangement of weapons and politics, but to stronger political con-

trol over weaponry.

"Our freedom and safety depend on working with free and liberal countries. I believe that rationality can lead to a condition of stability and that a condition of stability can ultimately lead to world peace."

### CASUAL CORNER

It's usual to find the unusual at Jean Harris' Casual Corner

### CASUAL CORNER

2440 Bancroft Way between Telegraph & Dane

## New Research Lab to House Famed Machine

The Richmond Field Station, site of large projects in engineering and related fields, is currently increasing research operations with an \$810,000 building program.

Annual research expenditure at the 160-acre Station is expected to pass the \$2.5 million mark during 1964.

Employees already number more than 450, including 150 graduate students working as research assistants.

The largest construction project on the Richmond Station during the coming year will add a new structural research laboratory, a major facility for the Division of Structural Engineering and Structural Mechanic here.

Built at an expected cost of some \$600,000, the three-story glass and aluminum building will house important research projects aimed at developing new and improved materials and techniques for use in the construction industry.

Research apparatus in the new laboratory will include the University's famed 4-million-pound testing machine to be relocated from its present site here.

Also under construction on the Station during 1964 will be a new traffic laboratory, a new model basin for scientists studying the effects of wave action on ships, an administrative headquarters for work in naval architecture, and additions to the Station's administration and conference building.

Projects in the Institute of Transportation and Traffic Engineering are yielding valuable new knowledge on highway paving materials, street and highway lights, auto safety devices, and runway surfaces and lighting systems for jet airports.

The Forest Products Laboratory, operated by the School of Forestry develops processes utilizing wasted timber species (including several California hardwoods) and reclaiming many of the waste products from lumber manufacturing.

Studies in naval architecture, the only one of their kind in the western U.S., provide a valuable technical resource to the western shipbuilding industry.

In the Sanitary Engineering Laboratory, researchers are demonstrating how green algae may be harnessed to reclaim valuable nutrients in the form of high-protein animal feeds from sewage wastes.

## Cannes Film Festival Winner, 'A Taste of Honey,' Shown Here



"A Taste of Honey," the film adaptation of Shelagh Delaney's stage play, will be presented at 8 p.m. Sunday in Pauley Ballroom.

The film won four British Academy Awards as well as the top acting prize at Cannes Film Festival.

"A Taste of Honey" stars Rita Tushingham, Dora Bryant, and Murray Melvin.

A recent short film by Parisian photographer Eugene Atget will

also be shown as part of the ASUC film program.

Admission is 50 cents.

### THE DAILY CALIFORNIAN

Published daily except Saturday and Sunday and University Holidays during the University year by the Associated Students of the University of California. Entered as second class matter on March 1, 1901, in the Post Office, Berkeley, California, under the act of March 3, 1879. Subscription price \$5.50 a year; \$3.50 a semester.

S. Hurak Presents

# David Oistrakh & Igor Oistrakh

IN JOINT CONCERT WITH ORCHESTRA!  
GERHARD SAMUEL, CONDUCTOR

OPERA HOUSE • THURS. EVE., JAN. 9, 8:30 P.M.

Tickets NOW! Sh. Clay S. F. (Ex 7-0717) & Berk.; Brauners (Oak, Berk. & Rich.) Boxes \$6.50; Orch., Gr. Tier \$5.50; Dr. Clr. \$4.75; Bal. Clr. \$4.50; Bal. \$3.25 & \$2.50.

Vivaldi, Mozart, Bach, Double Concertos; Prokofiev, Double Sonata.

California Music Foundation

### CIVIL RIGHTS

**REMEMBER:** Support organizations fighting for civil rights, for example.

**CORE** 38 Park Row, New York 38, N.Y.

**NAACP** 20 West 40th St., New York 18, N.Y.

**NAACP** Legal D.E.F., 10 Columbus Circle, New York 19, N.Y.

**SCLC** 334 Auburn Ave., N.E., Atlanta, Ga.

**SNCC** 6 Raymond St., N.W., Atlanta, Ga. 30314

**FACULTY REMINDER GROUP**

J. Neyman, Chairman  
212 Amherst, Berkeley

M. Darland, Secretary

February Graduates, Professors, Students

Save \$\$ by going to Europe in the off season  
...AND FLY there on

# FEBRUARY CHARTER FLIGHTS

PAYMENT MUST BE MADE BEFORE JAN. 10

San Francisco to London for only \$210

FOR INFORMATION AND APPLICATIONS

LEW VAN BLOIS  
655-2320

BOB SHUKEN  
TH 8-5316

CALL 7 PM-9 P.M.

# SALE

## STOREWIDE JANUARY CLEARANCE

### Discounts of 20 to 50% on ALL Stock

### Including SKIWEAR

# MACKES' SWEATERS

2440 Bancroft Way

848-1036

# Sadalla, Tennant Top Intramural List

BY JOE VAN HOFF

Ed Sadalla, Gilman's amazing pass-catching end, and Bob Tennant, Boalt's bruising defensive end, led the field in a balloting of the intramural officials to determine the 1963 All-Star Football Team. Sigma Alpha Epsilon, third-place finishers in the National League, led the teams by placing two men on the offensive team and nailing down three defensive positions.

## VOLLEYBALL COMPETITION

As volleyball play reaches its final stages, only four teams remain in contention in each league. Undefeated Smyth has the inside track in the American League as winners of the top bracket. Their finals opponent will be decided in games between Ehrman and Boalt, the winner meeting Deutsch in the battle for the other finals berth.

### OFFENSE

Pos.	Name	Team
E	Sadalla	Gilman
E	Harding	Phi Tau
G	Archer	Psi U
C	Pinkham	SAE
QB	Matasievitch	SAE
HB	Budman	PhiEPi
HB	Wallenstrom	Gilman

### DEFENSE

Pos.	Name	Team
E	Tennant	Boalt
E	Walshal	Boalt
G	Sullivan	SAE
C	Hoffman	Bowles
QB	Wells	Boalt
HB	Weiss	SAE
HB	Fleming	SAE

Beta Theta Pi currently leads National League volleyballers, and will now be content to relax and watch Sigma Chi, Sigma Nu, and Phi Gamma Delta fight it out to get into the final game.

In tennis, I-House has already sewed up a position in the American League finals, while Phi Epsilon Pi leads the fraternity league in the net sport.

Team standings as of December 13 showed Sigma Chi and Boalt leading their respective leagues.

### NATIONAL

1.	Sigma Chi	600
2.	Sigma Alpha Epsilon	515
3.	Phi Epsilon Pi	475
4.	Zeta Beta Tau	475
5.	Sigma Phi Epsilon	455

### AMERICAN

1.	Boalt	550
2.	Ehrman	465
3.	Smyth	435
4.	Deutsch	410
5.	Bowles	390

## Pardon My Thoits ...

### Mindel Tagged 'Em With Lots of Show

BY C. A. BRICKER

A wonderful success story came to life when the Daily Cal's Al Mindel became the Bay Area's top handicapper during the recently completed Golden Gate meeting.

It's a heart-warming story of how a lad, renounced by his first love, baseball, bounced back to find his place in society—at the race track.

How well I remember the day when Alan came staggering in, to see me. His eyes were reddened. The world had cast him aside. Even his girl had betrayed him.

He looked at me with a sickly grin and said, "C. A., what am I going to do?"

I could see that this was no time for humor, so I cast my pen aside. "Alan," I said, "I'll take you under my wing. I'll find a place for you right here with me."

That sickly grin was replaced by that bright-eyed, happy look for which Al had been known before those dark days of baseball dismality.

This was the beginning of Al Mindell, boy handicapper. And what a success he became. So accurate were his selections that he soon became the talk of local newspapers. Charles McCabe, Prescott Sullivan, and Jack Macdonald all featured him in their columns.

And then Alan became a national celebrity. So widespread was his fame that he received a letter from a library in Kentucky desiring his complete works. Carolyn Arcaro, daughter of famous jockey Arcaro joined the Mindell bandwagon as she sent him her picture all the way from New York. Could be a hot romance brewing.

Before the racing season began, the Daily Cal ran a quick survey of the local collegiate horseplayers. Almost to the man they favored the conservative line of betting. It seemed that most of the local track inhabitants were experiencing a period of hard times so that a policy of show betting was set forth for the Golden Gate season.

With this in mind I instructed Alan not to be too concerned with selecting a winner, but to make sure that the horse finished in the top three. "Tag a nag that will finish in the money," I recall as my exact words.

And he did just that. So accurate were Al's figures that he had more horses in the money than any other handicapper.

Twelve of the Daily Cal's ace handicapper's horses romped home in the money out of fifteen selections for a nifty 80%. The ex-champion, Mark Roberts of the Chronicle, came close with 11. Chet Keppel of the Examiner only had 10 ponies in the money. I couldn't get figures on the Tribune and News-Call Bulletin, but I'm sure they came nowhere near our boy.

The local collegiate horseplayers who followed Al's selections soon became rich. Show bettores were returned a fat 19 per cent profit for their trouble. Horseplaying is once again a profitable pastime.

So great is the demand that the Daily Cal is considering the sale of the newspaper as a tout sheet during the upcoming Golden Gate season. In fact, I am thinking of organizing a college newspaper syndicate to cover the racing matters. And guess who I'll hire as handicapper?

**The Daily Californian Sports**

**LOWELL HICKEY**  
Sports Editor

**C. A. BRICKER**  
Assistant Sports Editor

**AKIN ADUBIFA**  
Night Editor



**AL MINDELL**  
Star Handicapper

## University Ski Club Presents Annual Winter Carnival Soon

The University of California Ski Club Winter Carnival is January 29 through Jan. 31 this year at Squaw Valley.

A \$17.50 ticket (\$16.50 for Ski Club members) entitles you to lodging Wednesday and Thursday nights at the Olympic Village, breakfast and dinner on Thursday and breakfast on Friday, admission to the Chanteymen concert Thursday evening, reduction on lift tickets, ski lessons, equipment rentals, and other events, plus participation in all the Winter Carnival activities.

Tickets may be purchased at the ASUC Box Office.

The following activities are open to all participants in the Winter Carnival unless otherwise specified. Those marked with "\*" require registration in the Ski Club Office (Eshleman Hall) on or before Friday, January 24, at 5 p.m. Those marked with "+" require team participation.

### WEDNESDAY

- 1:00 p.m.—Fun race over obstacle course.
- 2:30—Bear Slalom for skiers and drinkers.
- 3:30—Snowshoe Race on a skating rink.
- 6:30—Torch Skiing under torch light.\*
- 7:00—Broom hockey with broom and softball.\*†

### THURSDAY

- 10:00 a.m.—Relay race.\*†
- 11:00—Giant Slalom.\*†
- 2:00 p.m.—Fun race over obstacle course for beginners.
- 7:00—Broom hockey finals.\*†

### FRIDAY

- 10:00 a.m.—Tug-O-War on skis.†
- 11:00—Flying Saucer Race (participants should provide their own saucers).
- 1:00 p.m.—Hare and Hounds game where hounds chase the hare.

Questions about the Giant Slalom Race should be addressed to Dick Cornwall, 849-0488. Other questions may be addressed to Bob Holmstrom, 652-5903, or John Sebastian, 261-5566 or campus extension 2668.

## Announcements

### PITCHERS AND CATCHERS

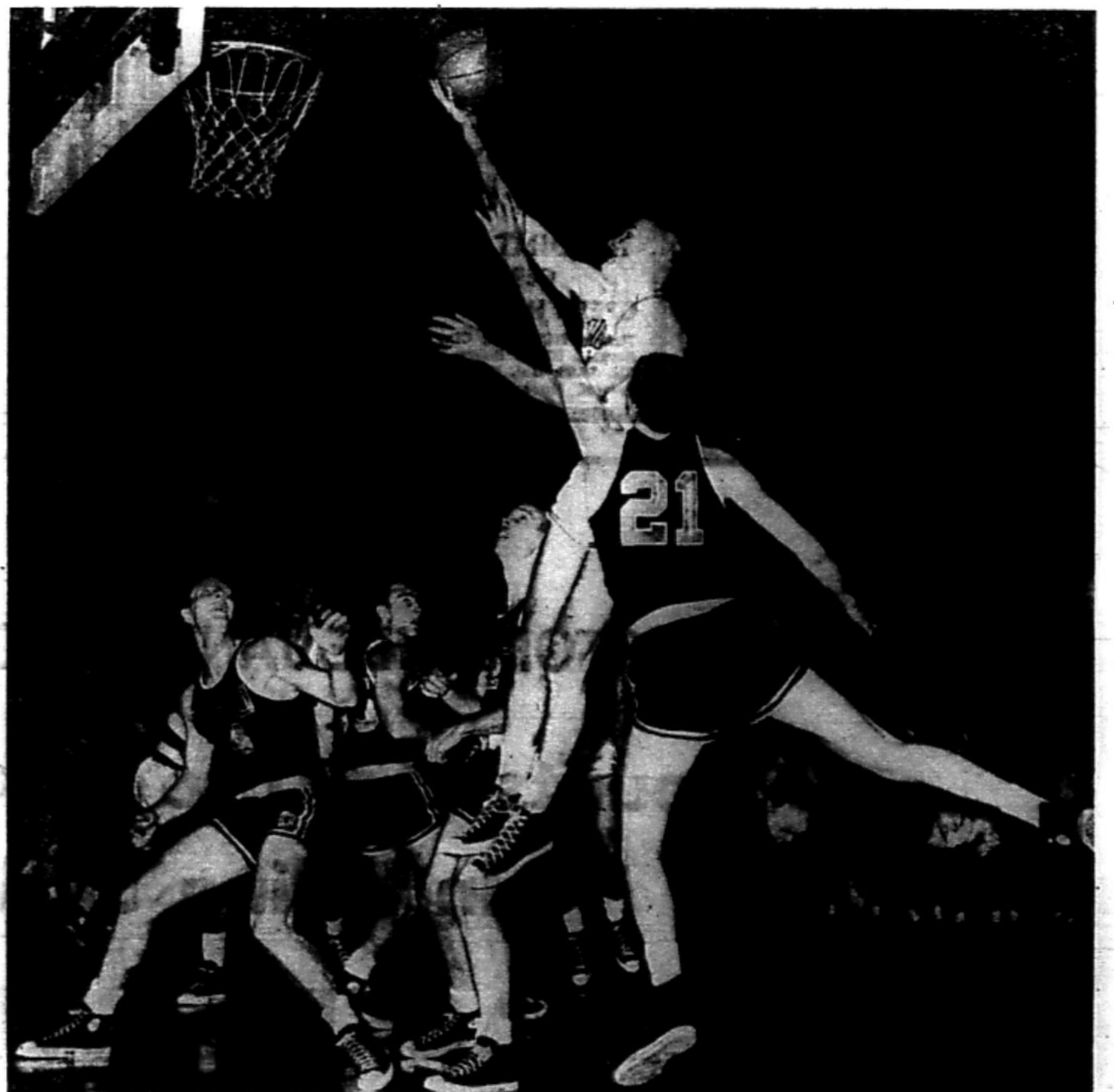
Baseball practice for pitchers and catchers starts Monday, Feb. 3. All others report Friday, Feb. 7. Physicals for pitchers and catchers will be given from 11 a.m. to 12 noon in the training quarters on Monday, the 3rd of Feb. Physicals for all others will be given from 4 to 6 p.m. on Thursday, Feb. 6. All players must get a tetanus shot prior to their physical.

### BASEBALL MANAGERS

Baseball managers are urgently needed. Free travel to L.A., Arizona, Omaha, Japan . . . all for a nominal amount of work. Anyone interested, please contact Walt Buck at the Phi Kappa house, 848-9303.

### BASEBALLER MEETING

There will be a meeting of all varsity and Freshman ballplayers on Thursday, Jan. 9 in room 11 Wheeler. Starting time is 4 p.m.



Washington State center Ted Werner scores on a layup over the outstretched arm of Oregon State's Mel Counts (21). Werner and the rest of the Cougars will be in town for two games with Cal, Friday and Saturday nights.

Reminder

Aliens Must Report Address During Month of January

C. W. Fullilove, district director of the Immigration and Naturalization Service, said that aliens in the United States will be required to report their addresses to the U.S. Attorney General during the month of January.

Any aliens who willfully violates the address report requirement may be fined up to \$200, imprisoned for 30 days and deported, he said.

Aliens who are not in the United States during January must report their addresses to the Service within 10 days of their arrival.

According to the Foreign Student Advisor's Office, the 2,477 foreign students attending the University are subject to the address report requirement.

All the foreign students at the University have entered the country under one of three visas: the student, exchange visitor, or immigrant visa.

Those under the latter visa entered the country with the intention of becoming citizens. Those possessing one of the other visas are permitted to remain in the United States as long as they are officially enrolled as students and are making "satisfactory progress."

The address report forms (No. 1-53) may be obtained at the Foreign Student Advisor's Office at International House and at any U.S. post office or Immigration and Naturalization Office.

Zoology Professor's Sculptured Work Goes on Exhibit in SF Soon

A month-long exhibition of the sculptured work of artist-zoologist Max Alfert will begin Jan. 18 in San Francisco.

A professor of zoology, Alfert is also a self-taught printmaker, painter, and sculptor.

His one-man show of 24 pieces will be presented Jan. 18 through Feb. 16 at the California Palace of the Legion of Honor in Lincoln Park, San Francisco.

Items to be displayed include assemblages of objects collected at local beaches and metal castings made from wax and other materials.

The subjects were suggested by the material rather than premeditated concepts, the artist has said.

A native of Vienna, Austria, Alfert has been a member of the University faculty since 1950 and has become a leading researcher on the chemistry of living cells.

In his artistic avocation, he has exhibited works at the Diablo Pageant of Arts, the 79th Annual of the San Francisco Art Institute, the International Graphics Biennial at Ljubljana, Yugoslavia, the Jack London Square Art Festival, and most recently at Oakland Art Museum.

Two One-Act Belgian Plays To Be Presented Tomorrow

"The Blind Men" and "The Strange Rider," two one-act plays by the Belgian playwright Michel de Ghelderode, will be presented at 4 p.m. tomorrow in the Durham Studio Theatre, B-45 Dwinelle Hall.

"The Blind Men," a parable inspired by Breughel's painting and directed by Jules Rothman, and "The Strange Rider," a radio adaptation directed by Virginia Maynard, are both University Theatre Workshop Productions of the dramatic art department. They will be performed as part of the work of Dramatic Art 181, a seminar in Michel de Ghelderode taught by Samuel Draper, visiting assistant professor of dramatic art.

Draper spent 1959 and 1960 in Brussels working with the late playwright on a forthcoming book "Ghelderode: His Life and Work." Several productions of Ghelderode's plays as translated by Draper have been seen in New York,

and "Pantagleize" is scheduled to open Off-Broadway in March.

Admission to the two plays is free.

Daily Cal Meets

The old cronies of the Daily Californian will reunite officially for the last time this semester at 7 p.m. today in 12 Eshleman Hall. Money will be taken from them for their semi-annual bash tomorrow night. They all better appear.

START THE NEW YEAR RIGHT

with the Best Pizza in the Bay Area

This Coupon worth 50¢ off on any one Pizza

Coupon Good only Sundays thru Thursdays

also

Free Soft Drinks with Every Pizza order (for Diners Only) at

Giovanni's Restaurant

1866 Euclid Ave.

841-8076

Offer Ends March 1st, 1964

CAMPUS CALENDAR

TODAY SEMINARS

R. A. Struble, professor of mathematics, North Carolina State College, will speak on "The Duffing Problem Completed," at 3:30 p.m., 277 Cory Hall.

Jack Richardson, Harpur College, will speak on "Learning During Paired-Associate Recall Trials," at 7:45 p.m., 5107 Tolman Hall.

A. A. Kadib, graduate student in Hydraulic engineering, will speak on "Sand Transport by Wind," at 3 p.m., 212 Hesse Hall.

W. Kendall, graduate student in metallurgy, will speak on "The Glass Transition Phenomenon," at 4 p.m., 290 Hearst Mining Building.

J. More, graduate student in metallurgy, will speak on "A Device for Tensile Testing Between 4.2 and 77°K," at 4 p.m., 390 Hearst Mining Building.

LECTURE

Leonard Goddard, professor of philosophy, University of New England, Armindale, New South Wales, will speak on "Types and Meaninglessness," at 8:15 p.m., 160 Dwinelle Hall.

Advertisement for Stayner Keep-A-Wake Tablets, featuring a mug and text: "FIGHTS FATIGUE AND DROWSINESS. STAYNER KEEP-A-WAKE TABLETS BETTER THAN COFFEE. AT DRUG STORES."

ZOUNDS! ONCE-A-YEAR SAVINGS!



GRODINS RAMS HEAD

FIRST ANNUAL JANUARY SALE

good values... good taste... in California's finest university shop for men

Our \$65 to \$115 Suits . . . . . \$48 to \$99

Our \$39.50 to \$65 Sport Coats \$29 to \$49

Our \$12.95 to \$25 Slacks . . . . . \$9 to \$19

- Our 39.50 Raincoats . . . . . \$29
Our 29.50 Raincoats . . . . . \$19
Our 18.95 Jackets . . . . . \$12.99
Our 15.95 Cardigans . . . . . \$9.99
Our 5.95 Shirts . . . . . \$3.99
Our 1.50 Hose . . . . . \$1.19
Our 2.50 Silk Ties . . . . . 3 for \$5
Our 1.50 T-Shirts . . . . . 3 for \$3.50
Our 19.95 Brogues . . . . . \$14.80
Our 16.95 Dress Shoes . . . . . \$11.80

Generous selections on sale but not everything reduced. Charge accounts welcome. You may take up to 12 months to pay.

GRODINS RAMS HEAD

Charge Accounts welcome. All you need is your Reg. Card, an eye for value, and you may take up to 12 months to pay.

WHERE GOOD TASTE ISN'T EXPENSIVE

2330 Telegraph Ave.

Open Thurs. Nite 'til 9

CLEARANCE

FLORSHEIM SHOES

Selected Styles Regularly \$19.95 to \$24.95. \$16.80 and \$18.80

MEN'S SHOES

Selected Styles Values to \$17.95. \$11.80 and \$13.80

Your semi-annual chance to save on selected styles. Large selection, but not all sizes in all styles.

GRODINS RAMS HEAD

WHERE GOOD TASTE ISN'T EXPENSIVE

2330 Telegraph Ave.

Open Thurs. Nite 'til 9

### Kabil to Conduct Erosion Seminar

Y. H. Kabil, assistant professor of materials, properties and testing, Cairo University, will discuss "Erosion of Metals" at 3:30 p.m. today in 310 Hearst Mining Building. The discussion is open to the public. Coffee will be served.

#### EXCUSE ME

Sonar helps dolphin mothers burp their babies, according to a UCLA scientist.

### Phelan Award Competition Announced by Trustees

Three thousand dollars in prizes will be awarded to writers of the novel, drama, and non-fictional prose by trustees of the James D. Phelan Awards in Literature and Art. One award of \$1,000 is offered in each of the three fields of literature in the competition which opened Jan. 1. Awards are made available in

literature and art (in alternating years) under the terms of a bequest of the late Senator James D. Phelan. Applicants must be native born Californians between the ages of 20 and 40, and they must make application on a special form which can be obtained from the Phelan Awards office.

### Paul Hau

### Watercolor Artist to Give Painting Demonstration

Paul Pei-Jan Hau, whose watercolors are now on exhibit in the Main Lounge of the Student Union, will give a demonstration of Chinese brush painting during a coffee hour at 3:30 p.m. tomorrow in 406-408 Student Union.


Hau's paintings mainly feature landscapes with birds, flowers, and other figures. Also in the collection are his interpretations of familiar California landscapes, such as Yosemite, in the techniques of ancient Chinese painting.

Other Hau subjects include the traditional Chinese peacock, bamboo, and Omei Mountain.

Many of Hau's paintings contain poems of his own composition in classical calligraphy.

Hau is a native of Peiping. He studied under the old Chinese master, Haung Pin-hung. Later he taught at the National Art College in Peiping.

Hau has exhibited his works in galleries in Peiping, Shanghai and Hong Kong. He has recently completed shows at the "Women's Today Department" of the San Francisco Examiner, the Lorne-Williams Gallery and the M. H. de Young Memorial Museum.



**CURRENT NOTES**

Classics 10a Econ 1a(1) & (2), 1b, 103a, 212b Philos 6a (3)	Poli Sci 118a, 141a, 194 Psych 1a Slavic 39
---	---

**COMPLETE SEMESTER SETS**

Anatomy 25 Anthro 1, 2a, 118 Arch 121 Art 1a, 1c Astro 1 Botany 1, 10 Bus Ad 18, 118 Chem 1a, 1b, 8 Classics 28 Econ 1a, 1b, 2, 113 English 1b, 30, 44a, 46a, 46b, 117a, 125b, 125c, 130b, 130c, 155, 158b French 39a, 39c Geog 1, 131 Geol 10	Hist 4a, 8a, 17a, 134a, 151a, 174a Ital 39a Linguistics 35 Math 1b, 3a, 3b, 16a Palaeo 1, 10 Philos 6a, 6b, 20a, 20b, 101 Physics 2a, 2b, 4a, 10 Physio 1 Poli Sci 1, 2, 100, 103, 120a, 162, 163 Psych 1a, 1b, 5, 168 Soc 1, 100 Zoo 1a, 10 Music 27a
---	--

SIR GAWAIN AND THE GREEN KNIGHT  
... A literal translation

## rybate lecture notes

ESTABLISHED 1934

2440 Bancroft Way TH 3-8080  
Campus Bancroft Building

Today's Artists Concerts  
presents

### The Songs of South Africa's *Miriam MAKEBA*

GOOD SEATS AVAILABLE!

Fri., Jan. 10, 8:30 p.m. Masonic Aud., S.F.  
Sat., Jan. 11, 8:30 p.m. Berk. Com. Theatre

Tickets Now: \$4.50, 4.00, 3.50, 2.50, 2.00 Downtown Center Box Office, 325 Mason Street, S. F. (PR 5-2921); Sherman-Clay, Oakland (WI 4-8375); Campus Records in Berkeley and Brauer's in Oakland & Berkeley.

## The MONKEY INN

3109 SHATTUCK AVE., BERKELEY  
BETWEEN BRINCE AND WOOLSEY



The MONK PRESENTS

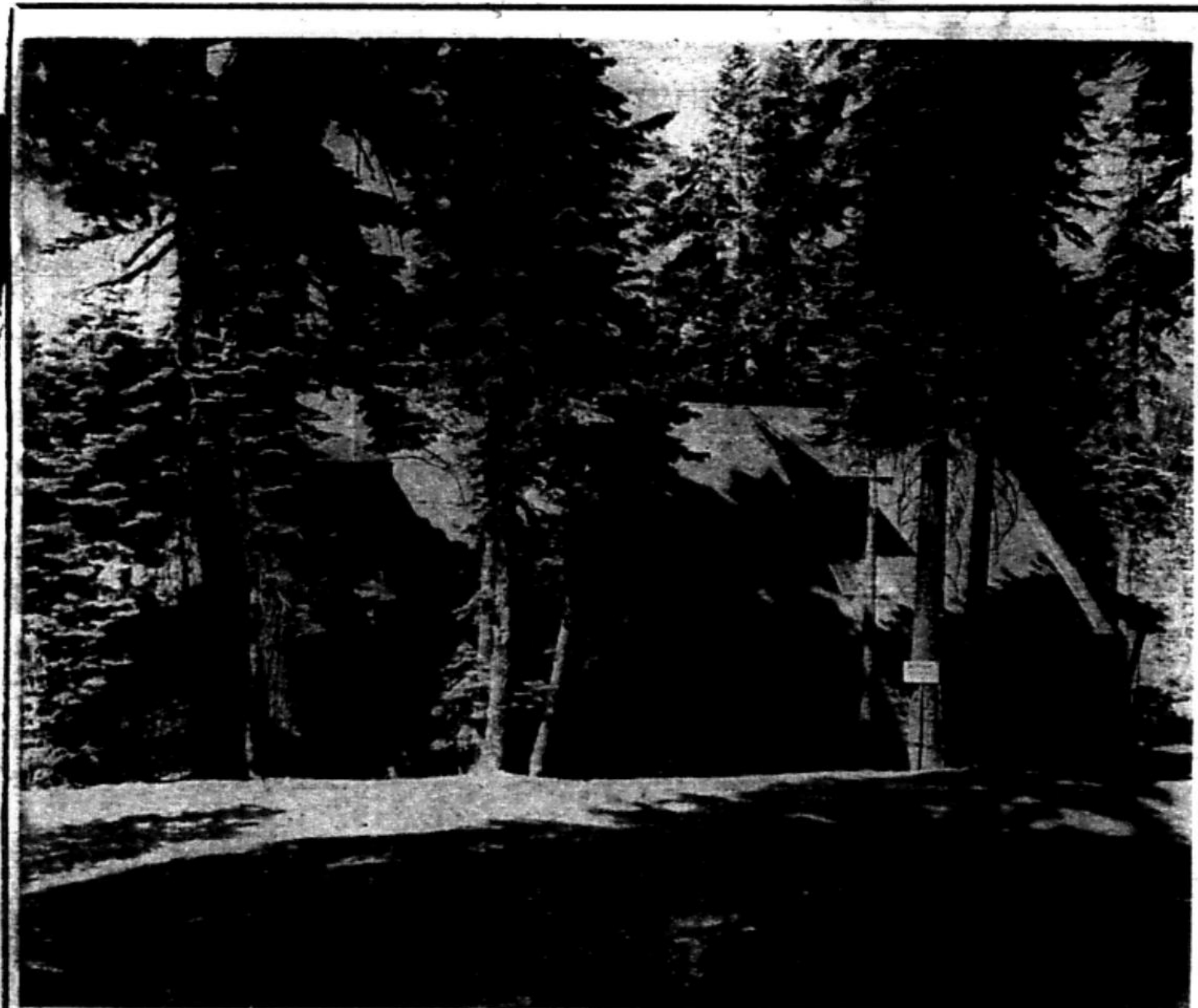
### "THE PLAYBOYS"

Starting Thursday Night

### Tomorrow Last For Daily Cal

Tomorrow will be the last official publication day for the Daily Californian this semester. Friday's edition—the Soph Edition—will be devoted only to satire and parody.

The Daily Californian will resume regular publication Wednesday, February 5. Persons with items for Campus Memo or Campus Calendar taking place after January 9 or before February 5 must turn them into the Daily Californian office before noon today.



# CAL LODGE

## NOW ACCEPTING RESERVATIONS FOR THE 1963-64 SKI SEASON!

- Learn to ski at Cal Lodge, 7000 feet high in the Sierra Mountains in the heart of the Sugar Bowl winter sports area.
- Student rates: \$5.75 daily (3 meals and lodging)  
\$10.00 weekend (Friday night thru Sunday lunch)
- Faculty, employees, and alumni are also welcome.
- FREE WEEKEND: spend 5 weekends at the Lodge; 6th weekend is free!
- THERE IS PLENTY OF SNOW.

MAKE YOUR RESERVATION TODAY AT THE A.S.U.C. BOX OFFICE, STUDENT UNION.  
Cal Lodge is owned and operated by the A.S.U.C.

**Sellouts**

**Four Musical Treats Coming, But Tickets Are Going Fast**

**BY PAUL HERTELENDY**  
Four musical events featuring an opera star, thirteen Viennese, and a clavichord player constitute the unusual campus fare slated for the coming weeks.  
Lyric soprano Victoria de los Angeles, who had to cancel her 1962 appearance in Harmon Gymnasium, is giving two separate programs in the more intimate confines of Hertz Hall on January 12th and 15th. Miss de los Angeles, who sang Desdemona in the San Francisco Opera's production of Verdi's "Otello," has starred at the Metropolitan Opera, La Scala, Covent Garden, and the Paris and London operas. Her program is not yet available at press time, but the Jan. 12 ap-

pearance is virtually sold out.  
Die Wiener Solisten, an orchestra of thirteen string players under conductor Wilfried Boettcher, will appear Friday at Hertz Hall. The all-Mozart program of the touring chamber orchestra will include both "Eine kleine Nachtmusik" and the Adagio and Fugue in C Minor.  
Their program is completely sold out.  
Joan Benson of Stanford University will give a clavichord concert Jan. 26 in the University Art Gallery. Only 100 tickets are being sold in deference to the almost inaudible tones of this portable precursor of the piano.  
The clavichord was widely used during the Renaissance and Baroque eras, and Mozart was known to have used it in composing operas.  
The program will include Haydn, W. F. and C. P. E. Bach and Wagenseil.  
All programs are scheduled for 8:30 p.m. Tickets are available through the CAL office at 2620 Bancroft Way and the ASUC box office at the Student Union.

**CAMPUS MEMO**

**Alpha Kappa Psi:** 7:15 p.m., Steven's Lounge. Election of new officers.

**Chinese Students' Club:** 3:30 p.m., 406-408 Student Union. Coffee hour: demonstration of Chinese brush painting by Paul Pei-Jen Hau.

**Delta Phi Epsilon:** 8 p.m., Expresso (on North Side). Meeting.

**Newman Hall:** 7:30 p.m., Newman Hall. Theology course, "The Meaning of Christ Today." The speaker will be Fr. James Schall, "Christ and the Trinity."

**Oski Dolls:** 4 p.m., Phi Beta Phi Meeting.

**Peace Corps:** 7:30 p.m., Sproul Room. Informal discussion conducted by Joyce Edwards and Neil Barron, recently returned from the Philippines and Pakistan. Jim Baylor will answer questions on the Peace Corps program.

**Prytanean Society:** 7 p.m., Senior Women's Hall. Meeting.

**Unitarian College Fellowship:** noon, University YWCA. Katharine Foley, "Sabbatical in England."

**University Society of Individualists:** 7:30 p.m., Music Room, Stiles Hall. Meeting and assembly of January issue of "Man and State."

**UC Folk Dance Club:** 8:10 p.m., 237 Hearst Gym. Request program.

**UC Photo Club:** 7:30 p.m., 408 Student Union. Elections, slide show and plans for next semester.

**Cal Student Employment Opportunities**

Inventory . . . Men students . . . PBX operator . . . Switchboard operator on-campus. Work 16 hours on weekends and holidays. Girl should have own transportation. Salary varies according to experience.  
available for inventory Sunday, Jan. 19 or evenings the last week in January should register now with the Student Placement office.

**DEMAND = SUPPLY**

This equation of economics, always true in the accounting sense, can be proven true in the student's life. The supply of ideas to meet the demands placed upon the student is infinite, for the source is God, Mind.

Hear specific instances of applying this principle in student life. We welcome you to our meetings, Tuesday evenings 7:30-8:30.

**Christian Science Organization**

AT THE UNIVERSITY

2601 Durant Avenue, corner of Bowditch

**KALDOR'S YEAR END CLEARANCE SALE**

**BEST BUY**  
Cotton, Dacron, Cotton & Dacron, Corduroy

**DRESSES**

Solids and Prints  
Slim and Flare Skirts

REG. UP TO 23.95

REGARDLESS OF COST

each

**\$7**

**YEAR END CLEARANCE SALE**

- KNITS
- WOOL DRESSES & SUITS
- STRETCH PANTS
- CAPRIS
- SWEATERS
- BLOUSES

REDUCED UP TO

**1/2**

**YEAR END CLEARANCE SALE**

**BEST BUY**  
WOOL

**SKIRTS**

Solid and Plaid,  
Slim and Pleated

REG. UP TO 15.95  
REGARDLESS OF COST

each

**\$6**

**COME EARLY FOR BEST SELECTION**

TO  
**Kaldor's Knit Shop**

2115 Shattuck Ave.  
Berkeley

(near the Bank of America)  
Use BankAmericard or just present your Reg. Card to open your charge account.

**Tom Huck sought scientific excitement**



**He's finding it at Western Electric**

Ohio University conferred a B.S.E.E. degree on C. T. Huck in 1956. Tom knew of Western Electric's history of manufacturing development. He realized, too, that our personnel development program was expanding to meet tomorrow's demands.

After graduation, Tom immediately began to work on the development of electronic switching systems. Then, in 1958, Tom went to the Bell Telephone Laboratories on a temporary assignment to help in the advancement of our national military capabilities. At their Whippany, New Jersey, labs, Tom worked with the Western Electric development team on computer circuitry for the Nike Zeus guidance system. Tom then moved on to a new assignment at WE's Columbus, Ohio, Works. There, Tom is working on the development of testing circuitry for the memory phase of electronic switching systems.

This constant challenge of the totally new, combined with advanced training and education opportunities, make a Western Electric career enjoyable, stimulating and fruitful. Thousands of young men will realize this in the next few years. How about you?

If responsibility and the challenge of the future appeal to you, and you have the qualifications we seek, talk with us. Opportunities for fast-moving careers exist now for electrical, mechanical and industrial engineers, and also for physical science, liberal arts and business majors. For more detailed information, get your copy of the Western Electric Career Opportunities booklet from your Placement Officer. Or write: Western Electric Company, Room 6405, 222 Broadway, New York 38, N. Y. And be sure to arrange for a personal interview when the Bell System recruiting team visits your campus.

**Western Electric** MANUFACTURING AND SUPPLY UNIT OF THE BELL SYSTEM

AN EQUAL OPPORTUNITY EMPLOYER  
Principal manufacturing locations in 13 cities • Operating centers in many of these same cities plus 36 others throughout the U. S. Engineering Research Center, Princeton, N. J. • Teletype Corp., Skokie, Ill., Little Rock, Ark. • Gen. Hq., 195 Broadway, New York

**STUDENT GROUPS ABROAD**

Wide Variety of Tours planned for students only

**SORBONNE STUDY TOUR**  
70 days, \$1388

Including England, Holland, Belgium, France, Spain, Portugal

**DISCOVERY ADVENTURE TOUR OF EUROPE**  
76 days, \$1295

Many other Student Tours featuring Europe, Israel, Greece and USSR.

or Form your Own Group

Ask for Plans and Profitable Organizer Arrangements

SPECIALISTS IN STUDENT TRAVEL SINCE 1926



For folders and details SEE YOUR LOCAL TRAVEL AGENT or write

UNIVERSITY TRAVEL COMPANY  
Cambridge 38, Mass.

# Daily Californian EDITORIAL PAGE

MARY MCGOWAN JENNY WENK  
Editor Business Manager

Editorials express the opinion of the Daily Californian and make no claim to represent University or student opinion.

## Ex-officio Regents

Jesse W. Tapp, chairman of the Bank of America's board of directors, is now an ex-officio member of the University's board of Regents. He automatically assumed the post Monday when Governor Brown appointed him chairman of the State Agricultural Board.

Ever since 1868 the agricultural board's chairman, along with the president of the Mechanic's Institute in San Francisco, has been an ex-officio regent. The other ex-officio posts now automatically go to the governor, the University's president, the lieutenant governor, the speaker of the assembly, the state superintendent of public instruction and representatives from the University's alumni.

Long ago when the University was just beginning and California was primarily an agricultural and mining state, the inclusion of representatives on the Board of Regents from the two major areas of the economy answered an obvious need. Although it was not a land grant school, one of University's major functions was to turn out the necessary mining and mechanical engineers to uncover the state's resources. Another was to develop better and more efficient farming methods and train men to carry them out.

In 1915, when the University's structure was redefined it was still a leader in mining, engineering and agricultural education.

But since that time the nation's and the state's economy has changed. And the University's functions have, also. Pure and applied physical science, the social sciences and the humanities have replaced the prominent position technical subjects held at one time. Academics are more important today than techniques. And the University's well-deserved reputation as one of the intellectual centers of the country rests on that premise.

So in the second half of the 20th Century it seems that the presence of the agriculture board's chairman and the Mechanic's Institute president is an anachronism.

They are not needed. Indeed, one doubts if they do anything at all.

If it is necessary that there be a certain number of ex-officio regents, perhaps better representatives could come from one of the national science organizations. Or perhaps the chairman of the Northern and Southern divisions of Academic Senate could assume the ex-officio posts, giving a voice to the University's faculty within the Regents. Or maybe we could just forget the two positions, so only officials elected by the state, the University's president and the alumni would have ex-officio status.

It sure looks silly and an unnecessary waste of what could be important positions the way it is now.—Mary McGowan.

## Speakers Ban

The American Legion has again expressed concern that the public is putting out tax money to have University students indoctrinated by Communists.

In its latest attack on the decision last summer to lift the Communist speaker ban, the American Legion reflected the age-old fallacy that by hiding something it may somehow disappear. Communism does exist and shrouding it in a blanket of mystery by not allowing students to hear and understand the Communist viewpoint is not an effective means of fighting it.

In fact, the speaker ban was helping Communism more than hindering it by giving Communist speakers the title of "martyr." Communists gained excessive publicity when they were denied the opportunity to speak at the University and then drew overflow crowds off campus.

Last summer when Albert J. Lima, northern California chairman of the Communist Party, became the first Communist to speak on campus, he drew a large crowd of curious students and press. Anybody attending his speech had no fear that he swayed a single person with what he had to say.

Earlier this semester another Communist, Herbert Aptheker spoke on campus. The attention he got was not comparable to what he got a year ago when he was refused permission to speak on campus. He became just another speaker.

The Regents, in lifting the Communist speaker ban, expressed confidence in the students' "judgment in properly evaluating any and all beliefs and ideologies that may be expressed." University students have not betrayed this confidence and have shown by their conduct under the truly open forum policy that they are intelligent and mature enough to listen to all viewpoints.—Par Mar

I have known people to stop and buy an apple on the corner and then walk away as if they had solved the whole unemployment problem.

—Heywood Braun, "It Seems to Me"



## LETTERS TO THE ICE BOX

### Goldwater's Stand TO THE ICE BOX:

Yesterday's lengthy letter describing the virtues of Arizona Senator Barry Goldwater deserves some consideration (at least for the time that the author spent in writing it). In particular, several points intrigue me.

First, it is interesting that in Mr. Rosehill's second paragraph he identifies anti-Goldwater sentiment with anti-Semitism. Being Jewish and at the same time disagreeing entirely with the philosophy Goldwater espouses, I find it very difficult to accept this identification.

Secondly, Mr. Rosehill's letter goes on to defend Goldwater's support of anti-subversive legislative investigating committees and laws because it was "the potent, steadfast opposition to these committees and laws that kept the road open for Communism to creep into the minds of some Americans."

Perhaps it might be well to evaluate why we believe our nation has more to offer than do the Communists. Much of this, I believe, rests on the liberty and freedom of the individual citizen within our nation, and when we begin to subvert the very principles for which we stand in an attempt to defeat a system which we believe is our enemy, we must then begin to question the validity of our actions. For what will we be fighting if the institutions which have made our system as valuable as they are are undermined? When a man such as Joseph McCarthy in all of his witch hunting efforts received the unflinching support of the Arizona Senator, I find it very difficult, if not impossible, to understand how Goldwater can be identified as one who favors civil liberties.

Thirdly, Mr. Rosehill points to Goldwater's respect for American military might rather than for a foreign policy which considers the needs of humanity. It is exceedingly sad when, in a debate before the United States Senate, Mr. Goldwater can unashamedly admit that "I don't give a tinker's damn what the rest of the world thinks about the United States as long as we keep strong militarily." An attitude as shortsighted and as uncaring as this may indeed bring victory to the stronger military power. Yet for what reason would that victory have been achieved if the principles for which we are fighting no longer abound?

It is true that Mr. Rosehill accurately portrays Mr. Goldwater's position, but I believe that he does not go far enough. Thus, I

would like to point to several comments from Mr. Goldwater's book "Why Not Victory?" A careful analysis of this book as well as his book "The Conscience of A Conservative" would provide the reader with pages of quotations at which he could gasp in dismay. Yet for the sake of space, I will only point to several.

Mr. Goldwater says, "For the American Conservative, there is no difficulty in identifying the day's overriding political challenge: it is to preserve and extend freedom." Although it may seem obvious to the reader, Goldwater never defines the type of freedom of which he is speaking and for whom the freedom is meant. If his works are further analyzed, serious questions must be asked about these definitions, for freedom to Goldwater seems to be freedom only for those who can afford it and who are at the upper end of the social ladder.

Goldwater explains that he "constantly opposed summit meetings on grounds that the only progress they can produce is progress toward Communist domination of the world." Thus Goldwater excludes the possibility of discussion with our adversary — the only possibility of tension reduction in today's world. For on what is democracy founded if it is not discussion and freedom of expression, and how long can that system last or can competing systems co-exist if that possibility is removed?

Goldwater explains that backers of the United Nations "believe in a 'world government now'." This is simply not correct, as I believe many backers of the United Nations would admit.

Goldwater asks, "Are we prepared to allow a dozen African states (still ignorant—let's face it—of the ways of the world) to change the course of our foreign policy?" How can a man who hopes to be President of the United States, hence becoming our chief diplomatic representative to the world, display such shocking non-concern and disrespect for other human beings and sovereign states?

I will agree with Mr. Goldwater that the American system is the finest that this world has to offer, and I would also agree with him that it is a responsibility of American citizens to defend and preserve that system. The ideals and institutions for which this nation stands signify freedom, liberty, and justice for all men. Furthermore, they provide for the freedom of expression of all political views and for the protection of civil liberties to all minority groups. It is admirable for

(Continued on page 9)

# 8 a.m.

T. Hoadley

Am I furious! They did it again in the residence halls. They conceived of another means to restrict the normal freedom of those poor students. They have officially outlawed goldfish!

Now that may not sound like very much, but it is important to me. I lived in the halls three years, and I kept two small fish in one small bowl on my bookcase. They never made any noise or trouble or inconvenience for anyone but me, who had to change their water daily.

But they were interesting to watch once in a while, and they provided amusing diversion for me during long study hours. I can't say I really loved my little fish, but I would certainly have been the less without them. Besides, without me they would surely have perished.

And now they are illegal. Can you imagine that? I can just see it now: ten deans, four administrators, and six student leaders sitting around a table and considering the ponderous question of whether goldfish are to be or not to be. All in favor of goldfish say Aye.

All against students say No. If there was any one thing that bothered me about the residence halls, it was not the constant noise or the wretched food or the useless dues; it was the thousand stupid petty rules which restrict any normal behavior and contribute towards an intolerably sterile impersonality. You must eat breakfast by 8:30, but we'll slam the door in your face at 8:31. You must not drink alcohol in your room, even if you are 21, because it might corrupt a freshman. You must pay your hall dues and make your bed, but you mustn't show a girl your room or put pictures on your wall. I once knew a fellow whose mother made him special curtains for his room, but he wasn't allowed to use them because they were of a different color from everyone else's!

I know the residence halls will never change, and I know that I will never let any of my progeny enter one. The reason I know is that students are here only four years and, even if their arguments are good and sound, the bureaucrats will never forget their advantage, time, and will resist and outlast any number of ideas for change. Long live the residence halls! Long live stagnation! And regression! Poor kids, some of my best friends were dormies.

## Rossini Disappoints in 'Italian in Algiers'

BY PAUL HERTELENDY

A group of spirited young aspirants from the UCLA Opera Workshop did their best to breathe life into Rossini's comic opera, "An Italian in Algiers" in Hertz Hall Monday night. The English version of the work, under the direction of UCLA music chairman Jan Popper, played to a capacity house.

If the attempt was not a success, the fault lay principally with the composer, who dashed off this absurdity in three weeks at the age of 21.

Incredibly, the San Francisco Spring Opera is producing this one too, threatening to make 1964 Rossini's year.

The music, even for Rossini's day, sounds vacuous and trite, the plot as nonsensical as any of its time (1813), and the humor as subtle as Laurel and Hardy.

Indeed, Rossini seems to have picked out some of the worst elements of the previous generation's comic opera, and only in rare ensembles does the musical effect jell.

Worse yet, the English translation, done in part by UCLA's Robert Mesrobian, only brings home the banality of the libretto, despite the translators' many witty touches.

The acting was generally excellent, even if its humor was rather broad. Mezzo soprano Stella Herman and bass Muneo Ohakwa as Isabella and Mustafa were particularly engaging in their caricature roles.

Of the ensembles, the act one finale septet "I Am Afraid I'm Going Mad" was most effective. With Berkeley's Ronald Mitchell singing Taddeo, the opening Taddeo-Isabella duet was an instant success, as were Taddeo's "Long Life" with the harem guard chorus and the Pappataci trio, with Mitchell, Ohkawa, and tenor Richard Magpiong.

The staging was simple, as it must be in Hertz Hall, but it well suggested the frivolous, circus-like papier-mache aspect of the work.

"An Italian in Algiers" is Anachronism in UCLA. While the Workshop's lively productions are always welcome in Berkeley, its Dallapiccola "The Prisoner" of last year and Britten "Midsummer Night's Dream" of next spring befit its versatility much more than does this operetta.

## The Daily Californian

JIM HOUCK, managing editor; ALEX STEVENS, city editor; PAT MAR, assistant editor; SUSAN JOHNSON, news editor; MIKE FISCHER and MARILYN GRISANTI, assistant city editors; LOWELL HICKEY, sports editor; C. A. BRICKER, assistant sports editor; TSAMI ARIFUKU, advertising manager; ALICE WONG, production manager; JOHN GUELDER, promotion manager; JANE COOLIG, office manager; RON ENFIELD, chief photographer.

50  
NANCY TOLBERT, Night Editor  
KEN BUDMAN, Night Manager

# LETTERS TO THE ICE BOX

(Continued from page 8)

an individual to defend these institutions, but it is dangerous for an extremist to subvert the very institutions that he is defending in an attempt to defeat an opponent.

I applaud Senator Goldwater for advocating victory over Communism, but I deplore the cost that his program for victory will entail, as the victory that he espouses would be a hollow one indeed. Let us prove to the world that what we have to offer is a true democracy which provides for freedom of expression, for the freedom of competition of ideas and thoughts and in which our own freedoms, liberties, ideals, and goals will not be sacrificed at any cost.

—Mel Levine  
senior, political science

## Voting

To the Ice Box:

Miss Mar's naive belief that the quality of government in the United States will be improved if more people are permitted to vote admittedly has great appeal—especially on a campus where a large number of the students are between 18 and 21. But this belief has very little logical basis.

"The United States lags behind many other free countries in voter participation." Fine. Would Miss Mar seriously want the United States to imitate the chaos of French politics, with better than 90 per cent voter participation? Or the volatile situation in Italy, which also has greater participation in elections than the United States?

There is nothing inherently good in simply turning out large percentages of the population for each election. Studies of the American voter have shown that he is often completely unaware of current issues, influenced to a fantastic degree (as much as 80 or 90 per cent) by inherited party loyalties that may have been formed before 1900, and generally not the ideal citizen of democratic theory.

Wouldn't we be better off to make it as difficult as possible to vote in elections, so that only the really concerned citizens would do so?

Whether or not he has just completed a high school civics course, an 18-year-old is still very likely to be influenced by other than objective factors—the party affiliations of his parents, the sex appeal of a candidate, and so on. While reaching 21 does automatically exempt a potential voter from these influences, isn't it better to permit a three-year cooling-off period, so that only those who are at least somewhat interested in the election will vote. There is nothing wrong with apathy, if

the alternative to apathy is stupidity.

As for literacy tests, Miss Mar's vague desire to eliminate them because they seem to have something to do with segregation shows her good intentions—and her fuzzy thinking. Applying her own logic, a man must be able to read to be accepted by the Army; the least one can ask is that the same criterion be applied at the polls.

—Steve Zorn  
Junior, journalism

President Kerr in his book "The Uses of the University" describes these as the "walking wounded," but he offers them no escape or hope. How this group is to be dealt with is probably one of the main problems of higher education.

—Al Connelly  
Sophomore, engineering

## Intellectuals

To the Ice Box:

I believe that Mr. Hutchins forgot one very important group in his article on the ills on education. That group, really a collection of individuals, is that of the intellectual deviates. They are readily divided into two groups: those interested in some esoteric field of knowledge and those who have broad but acute interests. This group is different from the "normal" GPA centered group, and as a consequence, is often out of contact with the reality of the university.

Now I contend that deviates are more perceptive and sensitive than the average student in that he realizes that the course wise fragmentation of knowledge results in a net gain of knowledge near zero. However, I also believe that deviates cover the full range of intellectual capabilities so that it is only the deviate of the highest level of capability who is able to satisfy his own desire for knowledge and fulfill the course requirements satisfactorily. The remainder must suffer rejection by the system of his desire to learn-and/or frustration of his desires in submission to the system.

Stereo & Hi-Fi Components  
**DISCOUNT PRICES**  
We Sell and Service Wallensak



**THE Sounding Board**

2342 Shattuck  
TH 3-7031

Daily 10:30 a.m. - 9 p.m.  
Sat. 10:30 a.m. - 6 p.m.  
Sunday 1 p.m. - 5 p.m.

# EUROPEAN STUDY TOUR

## Summer — 1964

### 48 Days — 8 Countries

Visiting art galleries, museums, palaces, Roman and Greek buildings, and other sites of interest in Switzerland, France, Italy, Austria, Germany, Holland, Belgium, and England.

6 Units credit San Francisco State College Summer Session

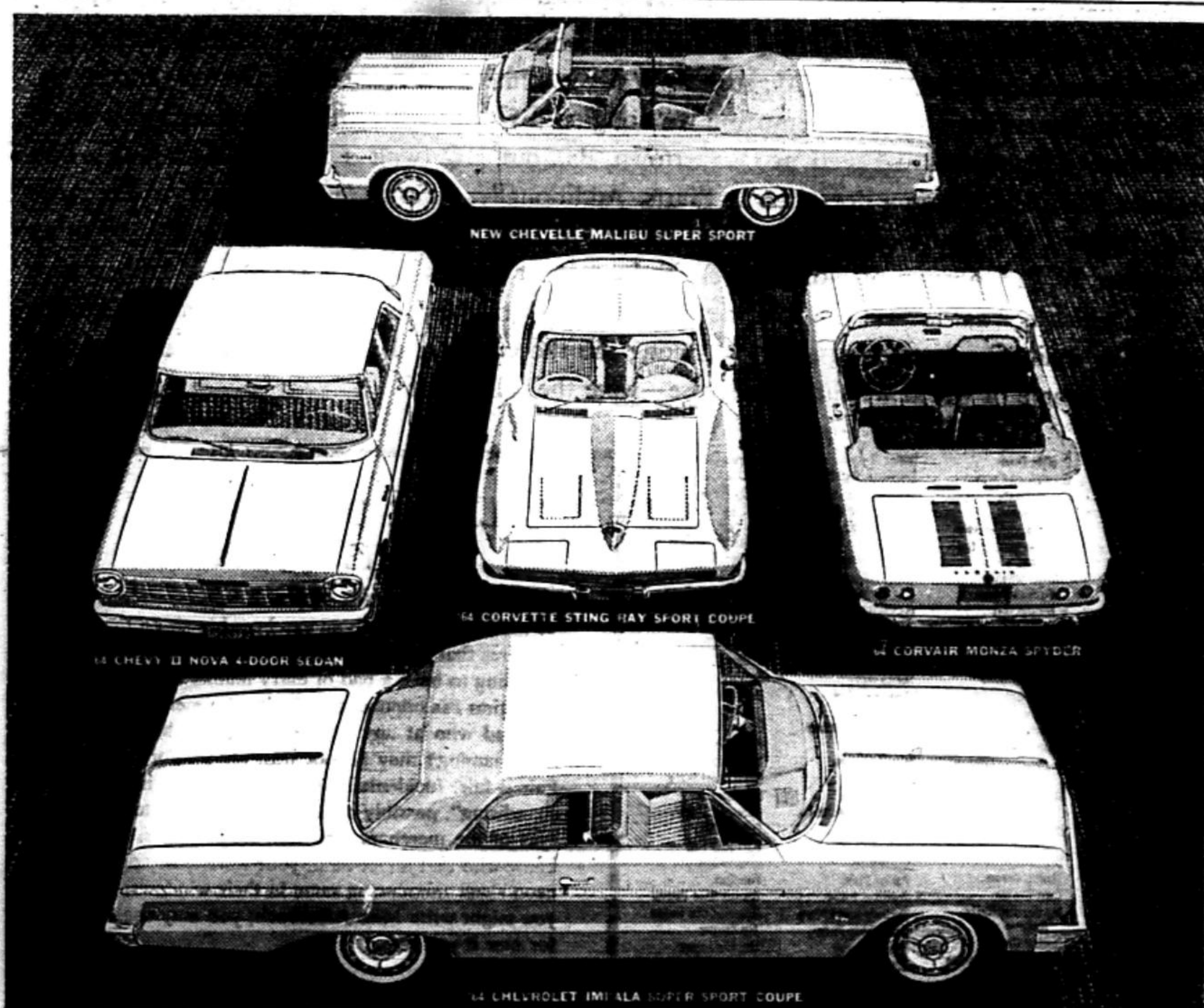
**Total Cost for European Arrangement: \$850.00**

Tuition and transportation to and from Europe additional.

FOR BROCHURE GIVING FULL INFORMATION WRITE TO:

**DR. RICHARD MARSH**  
1600 HOLLOWAY AVE.

**SAN FRANCISCO STATE COLLEGE**  
SAN FRANCISCO



## COUNT ON CHEVROLET TO BUILD THE ONE YOU WANT

**ONE-STOP CHEVROLET SHOPPING** never meant more than it does today. Five lines to choose from—starting with the Jet-smooth luxury Chevrolet, then the totally new Chevelle, the better-than-ever Chevy II, sporty Corvair, and the exciting Corvette Sting Ray. And you've got 45 models and 22 engines to choose from.

Chevrolet's Impala Super Sport series tops the lineup with luxury you'll love to get used to.

Chevelle has the room you want in a size you can handle. Chevy II's handsome in sparkling new trim. Corvairs for '64 enjoy crisp styling accents and more power—nearly 19% more horsepower in the standard engine. The famous Corvette Sting Rays have a smoother ride and smarter interiors.

Put all this choice together and you see why you can count on Chevrolet to build the one you want in '64! And it's at your Chevrolet dealer's!

**THE GREAT HIGHWAY PERFORMERS Chevrolet • Chevelle • Chevy II • Corvair • Corvette**

See them at your Chevrolet Showroom

cough..  
wheeze

**SPUTTER**

money  
worry

**STOP**

**Vern Bridges**

**Purrr.....**

P.S. We also have a  
coke machine

**Vern Bridges**  
**Shell**

Claremont Avenue & Russell  
Berkeley TH. 5-9001

**Attention SENIOR and GRADUATE MEN Students** who need some **FINANCIAL HELP** in order to complete their education this year and will then commence work.  
**Apply to STEVENS BROS. FOUNDATION, INC.**  
 A Non-Profit Educational Fdn. 610 Endicott Bldg., St. Paul 1, Minn.  
**UNDERGRADS, CLIP AND SAVE**

**Interested in GRADUATE TRAINING**

**Predocctoral fellowships and tuition grants are available to students with superior academic records in the natural-sciences, who wish to pursue a course of study and research leading to the Ph.D. degree in Pharmacology.**

Modern pharmacology is a biomedical science of unusual breadth and versatility. Its tools are those of biochemistry and molecular biology, genetics, microbiology, physiology, the neurological sciences and psychology, computer sciences and biostatistics. Its aim is to gain a deeper understanding of how chemical agents modify fundamental biological processes.

At Stanford University research in pharmacology seeks to discover how drugs alter cellular function at the molecular level, and how drugs influence the activity of the brain.

Qualified applicants with majors in chemistry, biology, physics, mathematics or related sciences are invited to apply for more information to:

**DEPARTMENT OF PHARMACOLOGY**  
**Stanford University School of Medicine**  
**Palo Alto, California**

**Women's Summer Jobs Discussed**

Summer jobs for undergraduate women will be discussed at noon tomorrow in 406-408 Student Union. A representative of the campus employment office will talk to all interested women about job opportunities in fields of summer camp employment, in department stores, and business offices.

**C-Is Join Socially With Dorm**

A program designed to meet one of the basic needs of commuter-independents — the need for social contacts — will be sponsored next semester by the Commuter-Independent Association in conjunction with the Women's Residence Hall Affiliation.

Girls selected for the program will be full members in all social activities of the residence hall.

They will have full use of the hall's recreational facilities, will attend all floor and housemeetings, and will have dinner at the hall every Monday evening.

The girls will gain all the social advantages of living in a residence hall while retaining the advantages of commuter-independent life. The only charges for this service include the small residence hall social fee and the price of the Monday night dinners.

All girls interested in participating should fill out an application at 405-Student Union between 10 a.m. and 2 p.m. on Thursday or Friday. Applications are due Monday in 405 Student Union. Interviews will be given later next week.

**Natural Man and Spiritual Man**

"Eye hath not seen, nor ear heard, neither have entered into the heart of man the things which God hath prepared for them that love him. But the natural man receiveth not the things of the Spirit of God: for they are foolishness unto him: neither can he know them, for they are spiritually discerned." 1 Cor. 2:9, 14.

"Natural man" is the product of physical birth—anyone who is born into this world is born natural man. Many wonderful capabilities are given to us by our physical birth, but one painful deficiency is apparent. Natural man lacks the capacity to understand spiritual truths: "They are foolishness to him." Indeed, he CANNOT know them, the Bible says, because they can only be "spiritually discerned." To become aware of the things of God requires a spiritual birth. This regeneration by God the Holy Spirit happens to any individual who will commit himself to Jesus Christ. The Holy Spirit takes up residence in the believer's body in a real and unmistakable way and brings him into a knowledge of God. "He will guide you into all truth" John 16:13, and perfect you so that you grow up into "the stature of the fulness of Christ" Eph. 4:13. If you have any questions, please write to Box 11791, Palo Alto

**Peace Corps Campus Chief Appointed**

The ASUC Senate has recently given its approval to the appointment of Barbara Gullahorn as Chairman of the ASUC Peace Corps Committee beginning in the spring semester.

The committee works in conjunction with the ASUC International Relations Board to provide information about and to stimulate interest in the Peace Corps.

Miss Gullahorn has served on the committee for more than a year in the March 1962 "International Week Conference" and the Oct. 1963 University Meeting. Both events featured addresses by Peace Corps Director Sargent Shriver.

A major in Soviet government, Miss Gullahorn is studying economics. She speaks French fluently and studied for a year at the University campus at Bordeaux.

[Eagle Shirtmakers Proudly Announces]

**NO. CALDWELL, N. J. MAN or a MISS LAUREN WINS COVETED AFFLERBACH FELLOWSHIP!**

**A**FTER what is possibly the world's record rumination over who won a color-naming competition we have reached a decision. If you can remember that far back, more than a year ago we deplored the uninspired names given to colors (light green, dark blue, etc.) as well as the sheer flights of fancy that conveyed nothing at all (Kumquat Blossom Time, December Showers, Teaneck, etc.). We asked your assistance in conjuring up new, evocative names for shirt colors, but names that also had some connection with reality; such as Whizzer White, Well Red, Navel Orange, and so on. ★ To make the enterprise more tempting we dangled a Grand Prize of a Traveling Afflerbach Fellowship: a glamorous weekend at Quakertown, Pa., our HQ (with a free sightseeing trip into romantic Philadelphia), or a dozen Eagle Shirts. Additionally, there were 9 Stationary Afflerbachs of 1/2 dozen Eagle Shirts offered as second prizes. ★ Well, here it is: The winner is none other than either W. R. Goodwin of No. Caldwell, N. J. or Janet Lauren of New York, N. Y.! They were so close, which is what held us up, that they both win the grand prize. Second prize winners will be notified by mail. Congratulations, all! ★ Among the thousands and thousands of splendid names submitted—some of which we shall surely use—were the following:

- |                      |                       |                     |                    |
|----------------------|-----------------------|---------------------|--------------------|
| Forever Amber        | Profits Ecu           | Willie Maize        | Glasses Colored    |
| Chat Aqua            | Goodclean Fawn        | Sweet Molly Maroon  | Rose               |
| Freres Aqua          | Proud Flesh           | Your Mauve          | Tokyo Rose         |
| Come Azure           | Rudolf Flesh          | Afterdinner Mint    | Abie's Irish Rose  |
| Sick Bay             | Too too solid Flesh   | Establish Mint      | Braint Rust        |
| Editorial Beige      | Another part of the   | U. S. Mint          | Guaranteed Rust    |
| Gar Beige            | Forest                | Shotan Mist         | Implicit Rust      |
| Noblesso Beige       | Unforeseeable         | Mickey Moss         | Livery Sable       |
| Shan Franshisco      | Fuchsia               | S. F. B. Moss       | Old Chinese Sage   |
| Beige                | Freudian Gilt         | Go-Easy-on-the      | Polish Sauce Sage  |
| Hole of Calcutta     | Barry Water Gold      | Mustard             | Lock Sand          |
| Black                | Bydosis Gold          | Plastered Mustard   | Leapin' Lizards    |
| Jungle Board Black   | Common Gold           | Army Navy           | Sandy              |
| Miss Affler Black    | Ill-Gotten Gold       | Swiss Navy          | Hell Sapphire      |
| Strap Molasses Black | Molly Berg Gold       | Uncommitted         | Holy Mackerel      |
| Fountain Blue        | Conquered Grape       | Neutral             | Sapphire           |
| Gabriel Blue         | Statutory Grape       | God's Little Ochre  | Lawy Miss Scarlet  |
| Hulla Blue           | Gang Green            | Medi Ochre          | Point Sierra       |
| St. James Infirmary  | Keep-Bucks County     | Wicked Ochre        | Hiho Silver        |
| Blue                 | Green                 | Strip Ochre         | Bipartisan State   |
| Something Blue       | Lohen Green           | Tappi Ochre         | Last Straw         |
| Turn Blue            | One-Putt Green        | Bringemback Olive   | Outright Steel     |
| Elizabeth Barretting | Other Fellow's Grass  | Im Peach            | Eppy Taffy         |
| Brown                | Green                 | Com Pewter          | Barroom Tan        |
| Hush Brown           | Sha Green             | Lydia Pink          | Charla Tan         |
| How Now Cow Brown    | Thumb Green           | Parlor Pink         | Fan Tan            |
| Some-kind-of-nut     | Turn Green            | Political Plum      | Convertible Taupe  |
| Brown                | My Darling Nelly      | Tuckered Out Plum   | Room at the Taupe  |
| Wernervon Brown      | Grey                  | Hilanimous Puca     | Tip Taupe          |
| Blind Man's Buff     | Dorian Grey           | Rest in Puca        | Unsafe Topaz       |
| Civil War Buff       | At-night-all-cats-are | Clare Booth Luce    | Down Umber         |
| And-to-Hell-with     | Grey                  | Puca                | Telephone Umber    |
| Burgundy             | Prematurely Gray      | Quida Purple        | Unshrinking Violet |
| Bizet's Carmine      | Stin Gray             | People Eater Purple | Bied White         |
| De Sapio Carmint     | Zane Gray             | Unpertur Purple     | Civil White        |
| Carmintative         | Hard Hearted Henna    | Silly Putty         | Enajienable White  |
| Cyd Carise           | Lie Down Honey        | Better Dead than    | "Eny" Liggins Just |
| World Carise         | Outdigo Indigo        | Red                 | You White          |
| Bit Cherry           | Mood Indigo           | Blooded American    | Fwankloyd White    |
| Bread Chrome         | Kiddiedy Ivy          | Boy Red             | Hepple White       |
| Hot Chestnut         | Hill Mob Lavender     | Light District Red  | Hereford Faced     |
| Original Cinnamon    | Blind Date Lemon      | Sea Red             | White              |
| Purr Cinnamon        | Lilac & Trooper       | Thorob Red          | White Urp          |
| Roe Cocoa            | Harry Lime            | Shad Rose           | Follow the Brick   |
| Come and Get Me      | Mason Dixon Lime      | Billy Rose          | Road Yellow        |
| Copper               | My Fanny Valiant      | Cost-of-living Rose | Stonepark Yellow   |
| Robert Shaw Coral    | Lime                  | Gypsy Rose          | Sunlight on the    |
| Eagle's Cream        | Quick Lime            | Hackles Rose        | Mustard of a       |
| Isles Cream          | Sub Lime              | Hedge Rose          | Coney Island Hot   |
| Dun Scotus           | Free Loden            | Too Black Rose      | Dog at Sunset      |
| Seventh Ebon         | Impenetrable Maize    |                     | Yellow             |

**PLEASE DO NOT FILL IN THIS COUPON!**

**T**HE only reason this coupon is here is: we are going to make this page into an easel card to sit on the counters of stores that sell Eagle Shirts; and where this space is we are going to have a pad of entry blanks which people who buy shirts (as opposed to people who merely read ads like this and who at any rate have already had a chance at color-naming), may fill out with their color name entries. Fair is fair. Incidentally, this sort of effort is called "merchandising", possibly because it is intended to brighten the eyes of the merchant who sells Eagle shirts. If you don't know who that might be in your town (they don't all have neon signs announcing same in their windows, you know) you might write Miss Afflerbach; you may use the coupon for that if you like.

Dear Miss Afflerbach  
 Eagle Shirtmakers,  
 Quakertown, Pa.:

Where is my nearest Eagle Shirt dealer? (Psst, how about \_\_\_\_\_ for a color name?) Sincerely,

Name \_\_\_\_\_  
 Address \_\_\_\_\_  
 City \_\_\_\_\_ Zone \_\_\_\_\_ State \_\_\_\_\_

© 1964, EAGLE SHIRTMAKERS, QUAKERTOWN, PENNSYLVANIA

**Now...**

**2 for the price of 1**

**ANNUAL CLEARANCE**

Vaughn's terrific 2 for the price of 1 sale! An opportunity to add to your "natural shoulder" wardrobe at phenomenal reductions. Buy now! ... Limited Time



**SUITS  
 COATS  
 SHIRTS  
 PANTS  
 SWEATERS**

**ALL 2 FOR THE PRICE OF 1**

Early Selections Advisable  
**Thurs. 'til 8:30**

**VAUGHN'S**  
 Student Clothing Union  
 2333 Telegraph Ave.,

DAILY CALIFORNIAN WANT ADS

This newspaper fully supports University policy on housing. Therefore, classified advertising relating to housing is only available to those who do not discriminate on the basis of race, color, religion, national origin or ancestry.

Apartments

TIRED OF SHARING AN APARTMENT DO YOU WANT TO LIVE ALONE? New furnished—1 Bedroom Apartment Next to U.C. Campus Reasonable prices Single men & women. By appointment only. Phone 841-2760

DELUXE NEW AP1, 1 and 2 bed., electric kitchen, carpeting, drapes, swimming pool, Sauna Baths, covered parking, close campus. 1921 Francisco, 849-0599.

AVAILABLE SPRING TERM, \$110 up. Summer sessions, \$100. 2115 Haste, 3 blocks U.C. Berkeley's first, new, attractive, soundproofed, 1 bed. apt. Couples, 3 persons, child welcome.

STUDIO APT. FEBRUARY through August for 1 or 2 grads. 1/2 block from campus. TH 1-9459.

AN OPENING AT Bishop Parker. Must sacrifice. Furnished, pool, dishwasher, 2 bedrooms and 2 baths. TH 8-8580.

\$170 MONTHLY. TWO bedroom, furnished, new. Spring semester. 2119 Carleton. Dick Cutler. 849-2470 evenings.

LARGE APT. FURNISHED. 1/2 block from campus. Studio or one bedroom \$90-\$125. 1765 Oxford. 524-5771.

3 MODERN FURNISHED. Lease through August. Near Co-op. \$100. 841-9054 after 7 p.m.

BISHOP PARKER APT. available spring semester. Pool, dishwasher, 2 bedrooms, 2 baths, furnished, new. Apt. 302. TH 9-2428.

IN AN OLDER building with high ceilings and white walls. Cheerful studios and one bedroom. Unfurnished. Campus. \$85-\$100. 845-1421.

NEW 2-BED. FURNISHED APT'S. Electric kitchen, desks, garage, W/W carpets, pool, sun decks, modern furniture. TH 3-0164.

UNFURNISHED 1 BDR. Apt., modern, 4 blocks campus southside. Electric kitchen \$115/month. 848-1960.

APT., NEW, FURNISHED, large, 3 bedrooms, 2 baths. 2131 Blake #2. 849-2475.

SUBLET LARGE APARTMENT. Two bedroom for four. Furnished near campus. \$200 spring semester. TH 5-5728 after 5.

2 BED. UNFURNISHED or furnished new building near campus. Separate shower stall, 2 doors and hall, separate bedroom and living areas. See others then see this. Unfurnished \$150. 1921 Delaware. 524-5771.

ATTRACTIVE, SPACIOUS, NEW 2-bedroom furnished apt. Electric kitchen, pool, parking, elevator, soundproof, fully carpeted. 1927 Dwight Way #208. TH 1-7302.

1 GIRL SHARE 2 BEDROOM 2 bath Bishop Parker apt. with 3 others. Phone 842-50. Call TH 8-3264.

2 OR 3 WOMEN WANTED to share modern 2 bedroom, 2 bathroom apt. on Parker. All electric kitchen, pool, \$55. Call 849-2501.

SUBLET MODERN FURNISHED 2-bedroom. Big patio, utilities. Call 843-7955, 7-9 p.m.

APARTMENT SHARE 2525 STUART furnished. Geoffrey Russell 841-4883, 845-9412. \$70. Call after 7.

FURNISHED MODERN APARTMENT for girl. Electric kitchen, dishwasher, pool. Near campus. \$65 plus house utilities. 845-5217 evenings.

SUBLET 1 BED. APT. Furniture optional. Lease Feb. thru Aug. Close campus. Ext. 3241, evenings 845-7060.

Apartment to Share

MALE WANTED to share furnished apartment very close to campus. \$40/mo. including utilities. 843-0825.

WOMEN—YOUR OWN room in roomy upper flat. Or I will share your apt. TH 1-4147.

LARGE FURNISHED HOUSE: Girls; sem. private \$37.50, \$40.00. Boys; private "room" \$20. 843-6350 after 5. 2032 1/2 Parker.

ROOMMATE NEEDED: MALE, non-smoker. New furnished apartment. \$70. Close campus. Call TH 8-6536.

3 GIRLS TO SHARE furnished house for 6. \$45 month including utilities. Will lose house if not found within week. TH 9-1220 ext. 715 Spens-Black evenings.

STARTING SPRING SEMESTER. Senior girl wants roommate for 1 bed. modern. All electric kitchen. Walking distance. \$45 plus utilities. 841-4805 after 6.

PANORAMIC BAY VIEW apt. 3 grad. students seeking 4th roommate. Call 843-7685 or 162 Panoramic after 6.

NEW MODERN 2 bed. apt. near everything to share with male. Call 841-5014 after 6 p.m.

GIRL TO SHARE attic apt. near campus. \$33. 845-5136 or 848-7338.

MALE TO SHARE large 1 bedroom apt. with working student. Furnished. 2245 Derby. TH 3-3298.

GIRL TO SHARE modern 2 bedroom apt. with 2 girls. \$45. Call TH 1-2013 before 10 a.m. or after 10 p.m.

MALE TO SHARE large 1 bedroom apt. with deck with 3 others. Near campus. 843-8294.

WOMAN WANTED to share furnished apt. Call 848-7245.

SPACIOUS 2 GIRL APARTMENT \$47.50. 1 1/2 blocks from campus. 1669 Oxford Apt. #2. 843-0639.

3 FEMALES NEEDED to share house. \$45. Judy, 413 Ida Sprout 849-1220 after 5.

3 GIRLS NEEDED roommate share 2-bedroom furnished apartment in older house, south side. TH 1-7622, 510, 511-Cunningham Hall.

Miscellaneous Offices

3 FURNISHED OR UNFURNISHED offices Berkeley. 2831 7th St. near Freeway. Off-street parking. 841-1194.

Homes For Sale

ONE ACRE ORINDA. Trees, creek, hillside, 8 minutes to campus. \$3,000. 841-8670.

Typing

EXPERT TYPING. PAPERS, theses, dissertations. Reasonable rates. Grace O'Connell, 780 Vincente LA 6-3043.

FOR BEAUTIFUL ACCURATE professional typing—math, sciences, languages, arts-dissertations, manuscripts. Carole Smith, LA 4-8105. R-2-11-5

TYPING: EXPERIENCED, FAST. 35c/page. Pickup and delivery. Rush jobs accepted. Call Jean Warner, OL 8-8264.

TERM PAPERS, THESES, manuscripts. TH 8-2298, evenings and weekends. 12-11-R

EXPERT TYPING, ALL TYPES. Convenient pickup in Berkeley. 843-5278.

TYPING (ELECTRIC), PROMPT service. Theses, term papers, manuscripts. Mrs. Corso LA 6 Q333

TYPING TERM PAPERS, theses, dissertations. Experienced. Near campus. No delay. 849-1508.

NEED EXPERIENCED TYPIST? Theses, term papers done accurately, in-opsively, on electric machine. LA 5-3331, Mrs. Breazeale.

FINEST QUALITY TYPING on special Olympia. Standard page 30c; carbons 5c. Call Mrs. Wehmeier LA 7-1562.

TYPING—ALL TYPES. Convenient Berkeley location. 843-3175.

EXPERT TYPING, BERKELEY. Reasonable rates. Call before 8:30 p.m. Mrs. Panerio 843-5278.

CAMPUS TYPING SERVICE

2521 Durant Avenue

Theses our specialty. Also manuscripts, briefs, ditto masters, duplicating. Prompt, accurate, dictating machine—you dictate, we transcribe. Editing. TH 5-8980. Mrs. Perrin.

TERM PAPERS AND THESES. 1939 Stuart. TH 8-1778.

FOR ACCURATE TYPING on electric Pica-term papers, theses, manuscripts. Call Mrs. McCroskey. LA 6-6159.

TYPING AND EDITING. Fast, accurate, reasonable. 10 years experience. Parker and Fulton. TH 8-7283.

FYBATE PRINTING SERVICE

2440 Bancroft - TH 3-8080

Typing - Mimeographing - Printing Photocopying - Layout - Editing - Binding IBM electric "Executive" and elite Offset press - Mimeograph

TYPING: THESE AND TERM PAPERS. Experienced. TH 3-4745.

TYPING: ACCURATE, PROMPT service. Reasonable rates. 848-7748.

TYPING—INEXPENSIVE. All on IBM Executive. Term papers, theses, manuscripts—rush jobs. Larry Freda, 845-8035.

Janice Tate. Public stenographer. 4422 MacDonal Ave., Richmond. 233-8234 or 232-5299.

TERM PAPERS TYPED. 25c per page. Marilyn Wood. 654-1922.

ELECTRIC TYPEWRITING by professional. Over night service. 30c per page up. 849-1303. Save this ad.

Rooms

MEN, WOMEN, TELEVISION, laundries. Student kitchens, fireplaces. Meals optional. Reasonable rates. 2434 Warring. 845-3661.

ATTRACTIVE FURNISHED ROOMS, kitchen privileges, separate entrance, maid service, near campus, transportation. Call mornings, evenings TH 1-5222. Men only.

QUIET ROOM SOUTHERN EXPOSURE, kitchen privileges, maid service. University near Shattuck. \$40/month. VE 7-2036 after 6.

SECLUDED STUDY ROOMS. University near Grove. \$15-\$17.50 month. Furnished. 284-1089 after 5.

PLEASANT QUIET ROOM, in private home. 538 Graduate male student. South campus. Available 1-28. OL 2-7703.

SINGLE AND DOUBLE rooms for girls. Close to campus. 2550 Haste. TH 5-4384.

LOVELY ROOM WITH bath near campus. Breakfast privileges, low rent, exchange few hours driving. 841-9902.

SINGLE ROOM. ADJOINING bath. Furnished. Good bed—electric blanket, linens. Very light. Walk campus. 841-3931.

WOMEN. GARDEN COTTAGE for 2 or 3. Also, rooms available with lounge, kitchen, study, laundry, parking. 2520 College. TH 8-3608. TH 1-2575.

PANORAMIC VIEW, MEN. Private room, bath, entrance. Grad, faculty or business men available immediately. \$65. Also share cottage with 3 men grad students including board \$520 per semester. 848-0553.

Books

INTERNATIONAL BOOK STORE

1408 Market St. San Francisco

UN 3-2986

Marxist Americana—Negro Liberation Movement. Books & Periodicals from China and USSR.

USED BOOK SALE NOW

1/2 OFF ENTIRE STOCK

(Berkeley's best)

(Reason: we are moving)

11:00 to 5:30 Daily at 2013 Milvia

THE GLOZERS BOOKSHOP

1-10-G

Travel

STUDENT NEEDS RIDE FLORIDA. Route 66 around Jan. 25. Share expenses, driving. TH 1-0778.

Help Wanted

EUROPEAN JOBS—TRAVEL GRANTS for students. Lifeguarding, office work, etc. For prospectus, application send \$1: Dept. C, ASIS, 22 Avenue de la Liberté, Luxembourg City, Grand Duchy of Luxembourg.

WANTED IMMEDIATELY: TUTOR for Geology 10. Call 845-7005.

FEMALES. PART TIME telephone order desk. Salary plus bonus. Apply 2108 Shattuck, suite 124. 10-5:00.

MARRIED STUDENT, VET. 20 to 30 hours week. Salary will commence with experience. Hours flexible. Richfield OH Distributor. LA 4-3899 after 7.

Miscellaneous Services

SHOESHINE DON'T go off campus—see Jim in the Student Center, between the Bowling Alley and the Barbershop.

ALTERATIONS BY EXPERIENCED dressmaker. Ladies' apparel. Convenient North campus location. Reasonable rates. Phone 849-0371, 527, 0241.

AUTO DRIVING INSTRUCTION. Private lessons. Patient, professional instructors. Dual controls. Daytime, evenings, Saturdays. Convenient pickup service. Berkeley Driving School. LA 4-5321.

HAIRCUTS BY APPOINTMENT. TITO MORENO. Formerly of Sather Gate Barbers. Now in the ASUC Barbershop. Student Union. Tel. 845-9024.

DRESSMAKING, ALTERATIONS, REPAIRS. Original designs in casual and evening wear. Prices reasonable. Call TE 6-21-99.

CLASSICAL GUITAR INSTRUCTION, James Baron. Concert technique. Beginning and advanced. Home 527-2270, message service 845-5224.

Child Care

PERMANENT BASIS. FULL or part time. My home. Fenced yard, sand box. 1414 Bonita. 524-7200.

BABYSITTER NEEDED IN my home. 8:00 to 1:00. Mon. through Fri. 1767 Euclid Apt. 3. 849-1841.

DAY CARE for your child in my home. Age to 5 years. License. Phone 845-8293.

Room and Board

CALVIN LODGE

MEN AND WOMEN

Television—Laundries

Student Kitchens

Co-ed Dining Room

Outside boarders accepted

Reasonable rates

2434 Warring Street

TH 5-3661

R-2-6-Mc

MALE ROOMMATE: SPRING; 12 excellent meals per week. Swimming pool. Laundry facilities. \$450. TH 5-9566. Wolden.

U.C. RESIDENCE CLUB. \$90 and up. Single or double with private bath; daily maid service, TV, 24 hour desk service. Special semester rates for students. 1/2 block from campus. Co-ed. 2045 University Ave. 841-1163.

STUDENTS INTERNATIONAL ROOM, board available second semester. Men and women. Reasonable rates. 2728 Haste. TH 1-1516.

MALE STUDENT SPRING semester. Contract \$450. One block campus. 13 excellent meals. 845-9201. Gary Gray.

APT. WITH BOARD, across street from Tolman Hall, Male, for spring sem. 2283 Hearst 2, or see Mrs. Becker, 1849 Arch.

ATTRACTIVE UNIVERSITY APPROVED residence for women. Excellent food, 4 vacancies. \$450 per semester. TH 8-2525.

MALE GRAD. For 2nd semester. 2 blocks campus. Quiet. Good food. 845-9317, Bernie. 1-10B

WOMAN STUDENT FOR spring semester. Kitchen privileges. TV, ping-pong, co-ed dining, close to campus. 841-6714.

SINGLE ROOM FOR man student. 12 meals a week. 841-6714.

INTER-FAITH CO-ED RESIDENCE. Fellowship. 3 blocks south U.C. Students and employed. Room, all meals, excellent food. TH 3-2461, if no answer TH 1-4686, TH 5-4832.

A BEAUTIFUL ROOM for professional or graduate. Delicious food, reasonable. 2 blocks campus. 2717 Haste. See manager.

Rentals Wanted

GARAGE OR PARKING space needed. Hearst, Euclid area. Will pay \$10/month. 841-8076 after 1 p.m.

CALL SUSIE: 845-9505! SHE wants apt. with 1 or 2 girls for spring semester.

LOWER DIVISION GIRL wants to share apt spring semester. TH 1-6313 x 403 Sheny (Val) after 6.

Auto Insurance

AUTO, FIRE, SCOOTER, MOTORCYCLE. All your insurance needs in one convenient stop. 1688 Shattuck. 841-2833.

ALL DRIVERS—LOWEST possible rates, single/married. Ask for Mr. Siewert. Days TE 4-7100, Evenings OL 5-0377.

GOOD DRIVERS, PHONE me for rates. Save on auto insurance. Compare. Also, Scooters \$20, 6 months. Motorcycles \$28, 6 month. PL-PD. Farmers Insurance, 1887 Solano Ave., near Oaks Theater. 527-2141. 845-5796 evenings.

Personals

UNWANTED HAIR MARS your beauty. Permanent, gentle. Ruth Sayers, Registered Electrologist. 845-1917.

TROUBLE ON YOUR dates? Read "How to Succeed with Modern Women." Send \$1 cash to P. O. Box 355, Berkeley, Calif.

SALLY, I'LL BE boarding at the Co-ops next semester. Maybe you'd better too, it's a bargain. Call me at TH 8-1936 for more info. Freddy.

WANTED: SNOW FOR U.C. winter carnival.

SLEEP-LEARNING, HYPNOTISM! TAPES, records, books, equipment. Astonishing details, strange catalog free! Sleep-Learning Research Assn., Box 24-CP, Olympia, Wash.

Miscellaneous For Sale

NEW 1963-64 Student Telephone Directories

1/2 PRICE—50¢ (with an ASUC card)

Names, local address, major, status, telephone number, home address.

ON SALE NOW ASUC STORE Student Union

GUITAR SALE

Demonstrators, close outs and trade ins. Choose from 75.

\$24.00 to \$200.00.

Save 10%, 20% and 30%.

Sale also on Tape recorders, AM-FM radios and Pianos.

TUPPER & REED

2277 Shattuck Ave.

1-9-T

SAXOPHONES: CONN ALTO, \$110; Buescher Soprano, \$65; both in good condition. TH 3-4496, BE 2-14-60.

UNDERWOOD PORTABLE TYPEWRITER. Excellent condition. \$30. Best offer. 848-2362.

TYPEWRITER \$45/OFFER. Smith-Corona silent-super. See Steve Wetter, 2024 Channing Way, 5-7 p.m.

10-SPEED BICYCLE. LENTON grand prix. Huret derailleur. \$60. Dick Cutler, 849-2470 evenings.

DIAMOND ENGAGEMENT RING, must sell. Reasonably priced. Proof of ownership. 848-6400 ext. 417.

Apparel

NICE USED CLOTHING. We buy and sell, wool Capri pants \$1.98, car coats 98c to \$3.98, formal like new, sweaters for the family, men's sportswear \$2.98, ladies wool skirts \$1.98, children's clothing. 11732 San Pablo, El Cerrito. Garment Exchange. BE 4-0341.

Tutoring

FRENCH, ITALIAN, GERMAN, SPANISH coaching by experienced tutor. Course exams. M.A., Ph.D., translations. Three minutes to Dwinelle. TH 3-5158.

TUTORING SERVICE

BERKELEY SCHOLAR'S AID

Effective tutoring in more than 300 courses: math, physics, chem., stat., econ., bus. adm., history, 8 languages, music, English, composition. Training for term papers, etc. Fair rates. Call LA 5-4496 for immediate service.

TUTORING FOR MEN IN ANY lower division mathematics or physics. Esten-Buck (MA '30). 2424 Channing Way. TH 8-3346, 7 to 7:30 p.m. Rates reasonable.

Lost and Found

LOST AND FOUND is located in Room 2, Sprout Hall. Hours: 12 noon to 4 p.m. Mon. through Friday.

BRACELET, GOLD, JADE Between Piedmont, Telegraph 1-1-64. Reward. TH 5-9469 after 5. Liz Bishop.

TO THE PH.D. candidate in Philosophy. Dec. 15 you left your glasses at the Pancake House of Berkeley, 2645 Telegraph.

Motorcycles & Scooters

1963 HONDA 305. 1300 miles, garaged. Perfect condition. \$540. LA 6-8556.

1963 DUCATI 125cc. Bought in June. \$325 or best offer. 841-9270.

1962 BMW 600cc. 2500 miles, windshield, saddlebags, crashbars, large tank, custom handlebars. TH 5-5544 after 5.

CUSTOM HONDA 305 Hawk glove leather seat by Bates. TH 5-9317, ask for Steve Dane. 2-5-D

1959 VESPA. EXCELLENT condition. \$180. Call 652-4169 after 5 p.m.

1964 HONDA 50, red, electric starter and turn signals. \$250. BE 2-7995.

1963 HONDA SCRAMBLER 250cc, good condition; \$300 for equity and take over payments. 848-0748.

1958 VESPA G.S. SPARE tire. Luggage rack. \$160. TH 9-2893 after 1 p.m.

1959 YAMAHA 250cc. MUST SELL. Needs repairs. \$75 or best offer. Joe, 848-3875 after 5.

1963 HONDA 50 cc, 2500 MILES, \$225 or best offer. TH 1-7622, ext. 311. Ask for Steve.

1961 VESPA 125 cc. VERY GOOD mechanical condition, new clutch cables, \$190. BE 3-7976 after 5.

'58 MATCHLESS SCRAMBLER 650cc, recently rebuilt, \$425. Excellent condition, TH 5-9575. Ask for Scholz.

50 cc HONDA 3 mos. old. Like new, must sell \$425. 524-4016.

1960 VESPA 125. GOOD. \$150. TH 3-2740 Ext. 5570. Weekdays 9-5.

HONDA 50 GOOD CONDITION \$150. Phone 524-6378.

# S.F. Bay Delay?

SACRAMENTO (AP)—Governor Brown was urged today to call a special session of the 1964 legislature to consider a three-year moratorium on filling of San Francisco Bay.

Chairman Edwin L. Z'berg (D-Sacramento) of the Assembly planning subcommittee, said hearings have shown that immediate action is needed.

The legislature convenes Feb. 3 for a 30-day session which is limited to consideration of the state budget and finances unless the governor places other matters before it in a special call.

Z'berg called for legislation to:

- Rewrite state tide lands grants

to local governments to stipulate that any filling must conform to a regional plan.

- Declare a three-year moratorium on any further filling, including on private land.

"During the three-year period the Association of Bay Area Governments will have had an opportunity to get a regional plan under way and at that time we should have some determination as to whether the activities of private land owners conform to the preservation of San Francisco Bay as a natural resource belonging to all the people of the State of California," Z'berg said in a press statement.

# ASUC Senate Decides to Distribute Anti-Bias Leaflets

BY PEGGY KRAUSE

The ASUC Senate last night decided to ask the administration to include among the literature handed to students in registration line a leaflet giving state laws on housing discrimination.

The leaflet was proposed by the Student Civil Rights Commission which was established as part of the ASUC this semester. The vote was 15-2 in favor of the proposal.

The Senate decided that groups receiving funds from the ASUC cannot be considered "student political parties," and cannot sponsor or endorse candidates in ASUC elections.

The measure was proposed by Mike Gold, rep-at-large, after Student Judicial Committee ruled it

was legal for the Commuter-Independent Council, which receives funds from the ASUC, to endorse a candidate in the last election.

The Senate decided to ask the regents for money to light the major paths and roads through campus.

Pat Axtel (nee Boster), women's co-op and small approved living group rep, resigned her position because she felt she could not adequately fulfill her duties. She married Keith Axtel, rep-at-large, during Christmas vacation.

The Fair Bear Wage was raised to \$1.50.

# Edward Teller Lauds Stand By Rockefeller

SAN FRANCISCO (AP)—Edward Teller, University professor of physics at-large, Monday lauded New York's Gov. Nelson Rockefeller for developing "a realistic plan which is second to none in its tough stand against communism."

In a statement released through Rockefeller for President headquarters Teller said:

"This plan is not concerned with a fruitless search for subversion nor does it attempt to appease the Soviet rulers. Rockefeller suggests a daring program which offers the free world unity, safety and progress. I know from many personal discussions that this plan includes the need for compromise with our friends but no compromise with enemies of freedom."

Teller listed efforts by Rockefeller in behalf of peace and freedom, then said:

"I hope, that in the coming critical period Nelson Rockefeller's voice shall be increasingly heard and his influence be felt in the most significant way."

## Bible

A rare copy of the first complete Bible printed in English from the original languages has been given to the UC, Santa Barbara library.

# Study Hall Opens On Northside

Students living on Northside will be able to use a study hall located in Tolman Hall beginning Jan. 20.

The Commuter-Independent Association will open 2301 Tolman during finals and 2326 Tolman during the spring semester. Room 2301 will be open Jan. 20-24 from 5-11 p.m. daily; Jan. 25-26, from 9 a.m. to 5 p.m.; and Jan. 27-28 from 5 p.m.-11 p.m.

The study halls will be open to all students.

# Placement Center

Men interested in manual (hashing) jobs for Spring semester should register now.

Girl needed for weekend waitress position in College Avenue restaurant, 16 hours Saturday and Sunday at \$1.50 an hour plus meals.

# Buy Your Yearbook By MAIL

## 1964 BLUE & GOLD

110 Eshleman Hall UC, Berkeley 4, Calif.

Name \_\_\_\_\_  
 Campus Address \_\_\_\_\_  
 City \_\_\_\_\_  
 Phone \_\_\_\_\_

Enclosed is my  Check  Money Order  
 For  \$3.00 (First Installment)  \$8.00 (Full Payment)

PAYABLE TO BLUE AND GOLD

SAVE TIME AND TROUBLE

# Scholarships Head Schedule For UC Senate

Limitation of enrollment and distribution of funds to aid talented underprivileged students will head the schedule of Monday's meeting of the Berkeley Division of the Academic Senate.

The meeting will be held at 3:10 p.m. in 155 Dwinelle Hall.

The debate on the limitation of enrollment carries over from the last meeting of the Senate on December 9. At that time, academic excellence was proposed as one of the criteria for redirection of students from the Berkeley campus.

L. A. Henkin, professor of mathematics, is expected to present the Senate with a report from an ad hoc faculty Committee on Talent Among the Underprivileged.

The report will probably discuss the University's new program making available \$100,000 on a matching basis for grants to enable underprivileged students to meet the University's entrance requirements.

## Turfgrass

According to a UCLA soil scientist the general well being of turfgrass, as well as of most plants, is largely dependent upon the amount of oxygen made available to the roots.

## POLICE DEPARTMENT

Berkeley, California

Patrolman

\$628.00 - 693.00

Requirements include: 2 years college; at least 5'9" tall; in good health; between 20 and 29 years of age; vision of at least 20/40, corrected to 20/20 in both eyes; good color vision; excellent personal and work history; valid Calif. driver's license; U. S. citizenship.

Apply by Thursday, Jan. 30, 1964. Examination tentatively scheduled for first week in February.

EQUAL OPPORTUNITY EMPLOYER

Personnel Department, City of Berkeley, TH 1-0200 ext. 361.

## VERVE JAZZ SALE

Any 4.98 Special 3.49  
 Any 5.98 Special 4.19

## CAMPUS RECORDS

2490 Bancroft Way  
 opp. Student Union

# DRIVE THRU EUROPE

VW PORSCHE MG  
 VOLVO MERCEDES and many others

FOR INFORMATION and  
 FOR SALES on  
 EUROPEAN DELIVERY

For Information call . . .

TH 8-5316

after 6 p.m. 655-2320

# Hofbrau

# Chinese Food

ORDERS TO TAKE OUT

Hours: 11:00 a.m. to Midnight



CAFETERIA

2379 Telegraph Ave. TH 8-6475

# MOVIES

## BERKELEY THEATERS

**NORTHSIDE** 1828 Euclid TH 1-2647

— STUDIO A —

Audrey Hepburn—George Peppard  
 "BREAKFAST AT TIFFANY'S"  
 Marlon Brando—Karl Malden  
 "ONE-EYED JACKS"

— STUDIO B —

TIME Magazine Choice for 1957  
 Robert Mitchum—Curt Jurgens  
 "THE ENEMY BELOW"  
 ACADEMY AWARD—Henry Fonda  
 "THE MAGNIFICENT SEVEN"  
 with Yul Brynner—Steve McQueen

**United Artists** 2274 Shattuck TH 3-1487

Frank Sinatra, Ursula Andress  
 "FOUR FOR TEXAS"  
 — and —  
 "IN THE FRENCH STYLE"

**OAKS** Solano at Alameda LA 6-1334

Jack Lemmon  
 "UNDER THE YUM-YUM TREE"  
 — and —  
 Kirk Douglas, Mitzl Gaynor  
 "FOR LOVE OF MONEY"

**BERKELEY** 2425 Shattuck THormwall 8-4306

Walt Disney's  
 "THE INCREDIBLE JOURNEY"  
 — and —  
 "THE MAGIC VOYAGE OF SINBAD"

**ELMWOOD** 2964 College TH 8-0931

Marcello Mastroianni in  
 FELLINI'S "8 1/2"

## OAKLAND THEATERS

**Paramount** 2025 Broadway TW 3-2300

Walt Disney's  
 "THE SWORD IN THE STONE"  
 — and —  
 "MISTY"

**ROXIE** 519 - 17th St. TW 3-3311

Tom Tryon  
 "THE CARDINAL"

**Parkway** Park Blvd. near Lake Merritt GL 2-3993

Margaret Rutherford  
 "MURDER AT A GALLOP"  
 — and —  
 "MAID FOR MURDER"

**TOWER** 5110 Telegraph Ave. OLYmpic 3-8023

"LORD OF THE FLIES"  
 — and —  
 "A TASTE OF HONEY"

**T & D** 429 - 11th Street TW 3-5503

Cary Grant, Audrey Hepburn  
 "CHARADE"  
 — and —  
 "SPEED OF SOUND"

**CINE 7** MacArthur at 38th Ave. AN 1-3382

"MR. PETER'S PETS"  
 — and —  
 "GIRL WITH AN ITCH"

**Grand Lake** 8200 Grand GL 2-3556

Doris Day, James Garner  
 "MOVE OVER DARLING"  
 — and —  
 "JESSICA"

**Fox Oakland** 1819 Telegraph TW 3-2303

Dean Martin, Anita Ekberg  
 "FOUR FOR TEXAS"  
 — and —  
 "MAN FROM GALVESTON"

**Piedmont** 41st & Piedmont 654-2727

East Bay Premier!  
 Yul Brynner, George Chakiris  
 "KINGS OF THE SUN"  
 — and —  
 "MOUSE ON THE MOON"