

Reporter Learns About University Sex Life

BY SUSAN JOHNSON

The woman reporter graduated from Berkeley in 1937. She sat in the student apartment and regarded the three coeds carefully.

"Things like that just didn't happen in my time," she said simply.

The reporter had spent two hours talking to three Berkeley women students about sex, education, parents, the University, apartments and morality.

The interview was in response to the so-called exodus from women's dormitories this semester. The reporter was searching for a "sign of the times."

But the "sign of the times" is not news in the strictest sense. The real story is what women think of sexual morality.

"Men can talk all they want about the advantages of an affair," one girl said. "But it's the girls who

get the lectures that a man will have no respect for a 'fallen woman'."

"I get mad when I'm pressured to 'do it or else'—or else lose the guy I'm interested in," a freshman said. "I just get stubborn when the guy wants sex and nothing else."

"My parents are what you'd call puritans," a

FIRST OF A SERIES

transfer senior commented. "But I haven't toed their morality line as much as they would probably like me to. I think they're really worried about me; but I don't toe their line out of my own free will."

"If my parents knew that I had slept with my boy friend," another student said, "they would be very disappointed. But I don't think they would know what to say. It was different when they were in school."

The last sentence is perhaps a critical factor in what women students think and how much they talk about sex and sexual morality.

A freshman described her background:

"My mother never told me the facts of life. I learned from listening to my brothers, talking to my girl friends and from high school movies. My mother just tells me being a virgin is better than not being a virgin.

"She says sex can be beautiful at the right time—after marriage. She says premarital sex relations will make me lose my self-respect and the respect of men.

"But I have seriously thought about sleeping with boy friends. They expect it and if you don't do it, they drop you."

This is the common conflict among many young women. They consider their resolutions, however, different from their parents' "day and age."

The Daily Californian

NINETY-THREE YEARS OF CONTINUOUS PUBLICATION

Vol. 184, No. 7.

Berkeley, California, Friday, February 14, 1964

THornwall 8-4800, Ext. 3932

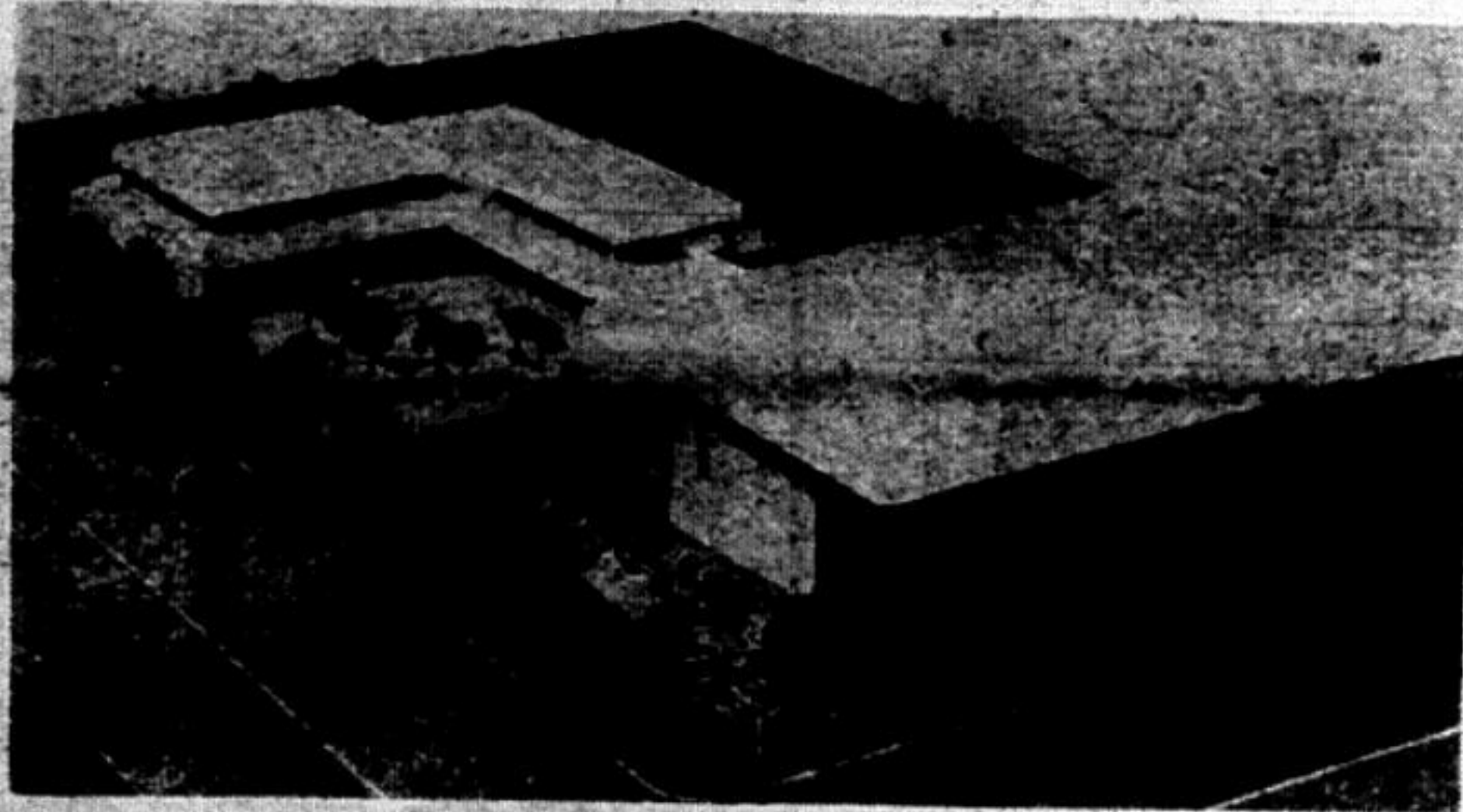
New Newman Hall Plans Reveal Changes in Design

BY RODGER MARCH

Modern church design, in its attempt to follow the new trends in architecture, often meets re-

sistance from the public preference for traditional design.

The controversy has reached the University campus in the de-



NEW NEWMAN HALL
Church design controversy

sign of the Newman Hall Chapel and Student Center which will be built on the corner of Dwight Way and College Avenue. Although not solely a church edifice, Newman Hall will be used for religious functions by a religious group; many alumni and students feel the original sketch did not reflect this use.

The chapel-center complex was designed by San Francisco architect Mario Ciampi.

According to Father Joseph L. Quinn, C.S.P., pastor of the student center, when the first sketch of the new center was placed on the building site about 18 months ago, "we received a tremendous number of comments, both pro and con."

As it turned out, the final design was dictated by the land available, which was insufficient for the original design. While both designs are contemporary, the final choice does not differ much externally from the usual conception of a religious center.

Criticisms of the first sketches usually followed two forms.

"It doesn't look like a church." According to Father Quinn, "Much the same thing was said several hundred years ago when

(Continued on page 16)

Experts Talk On War and Game Theory

Lectures on atomic war prevention progressed into a debate in semantics between the two lecturers last night in Wheeler Auditorium.

Anatol Rapoport, senior research mathematician of the Mental Health Research Institute, University of Michigan, and Albert Wohlstetter, University visiting professor of political science, spoke to a capacity crowd.

"It is high time," concluded Rapoport, "to stop calculating long enough to think awhile, perhaps even to listen to the voice of our conscience."

Wohlstetter agreed with Rapoport on basic principles but disagreed with some of his definitions. He protested the arousal of prejudice against strategists by name-calling their tool-game theory.

"The word 'games,'" he said, "suggests frivolity; frivolity in matters of life and death... worse, it suggests pleasure: sadistic pleasure in calculations about enormously painful and cataclysmic events."

Rapoport came back defending game theory as a valid tool but said this tool alone could not produce an answer. "Without mutual trust 'human organization would be impossible.'"

Both speakers quoted heavily from Thomas Schelling, professor of economics, Harvard University, and member of the Scientific Advisory Board of the United States Air Force. Schelling will be speaking today at 8:45 p.m. on "Arms Management in an Insecure World."

Schelling will be preceded by Morton Deutsch, practicing psychotherapist and professor of psychology and education at Teachers College, Columbia University. Deutsch will speak on "A Psychological Approach to International Conflict" at 8 p.m.

Card Senders Show Modern Subtle Touch

BY MARY MCGOWAN

Back in the old days a young man would often declare his affection for a girl by sending her a beautiful froth of lace and red velvet hearts on Valentines Day.

So one might expect that the mailmen trudging around today would be carrying tender messages of young love.

"But humorous cards outold hearts and flowers this year," stationery stores around campus reported.

That doesn't necessarily mean the thought has gone out of this holiday, developed from the celebration of an early Christian martyr.

The stores were crowded yesterday with people searching for just the right card to send to a friend.

One clean-cut young man held up a traditionally frilly card for a friend's approval.

His friend made a face. "You aren't sending that one to the doll you were with last weekend are you? I sent one like it last year. The girl hasn't spoken to me since."

Another fellow picked out four pretty cards and one that was rather insulting.

"These go to some girls I just date," he said, pointing to the flowery ones. "The other goes to a really sharp girl I'd like to know better. She'll think it's funny. She understands me," he added.

And a girl hesitated before the depleted Valentine racks, then went over and bought paper doilies and some fancy red, velvet-like paper.

"I keep remembering how much fun it used to be to make valentines," she said as she picked up a bottle of glue. "Like when we were in elementary school and everybody made cards for the entire class."

"The cards I send this year may look funny because I haven't done much cutting and pasting lately, but they mean a lot," she said, as she walked out humming "My Funny Valentine."

ASUC Fair

Students Get Opportunity To View Campus Activities

The ASUC Activities Fair will be held from 10 a.m. to 4 p.m. today in Pauley Ballroom.

Held at the beginning of each semester, the three-year-old fair acquaints students with various activity groups at the University.

Approximately 65 groups—both on and off campus—will have information booths set up in the ballroom. On-campus groups will have sign-up sheets available, giving students the opportunity to join groups which interest them.

The fair will feature several special attractions. Glee Club and Treble Clef will play recordings of past concerts during the day, and will sing at noon.

The Chinese Students Association will present a dance, complete with dragon, at noon around Ludwig's Fountain in honor of the Year of the Dragon.

The Folk-Dancing Club will give demonstrations in the middle of the ballroom. A puppet show will be presented by Cal Camp.

The Straw Hat Band will play at noon. The pom-pom girls, and of course Oski, will also be there.

Among other groups represented will be Ski Club, Angel Flight, Collegian Singers, and Cal Prep, the Freshman Orientations organization.

Study Lists

Study list filing begins today and will continue until Feb. 24 from 8:30 a.m. to 5 p.m. in the registrar's office, Sprout Hall.

The schedule is as follows:
A-E, inclusive, today.
F-K, inclusive, Monday and Tuesday.

L-Q, inclusive, Feb. 19 and 20.
R-Z, inclusive, Feb. 21 and 24.
The study list must be signed by the student's advisor before filing.

Sale of Graphic Arts Department?

BY JAI SINGH

ASUC Graphic Arts may be sold and its space in the new Student Office Building may be allocated to the Department of Intercollegiate Athletics. That is, if a motion made by ASUC President Mel Levine at the senate meeting Tuesday night is passed.

Graphic Arts, an ASUC enterprise, prints syllabi for University classes, posters for ASUC events, election posters, materials for clubs, and other ASUC printing.

It provides photography services for all students at a generally lower price than they would have to pay elsewhere, and takes pictures for sports events.

Levine said it should be sold because the functions of a printing and duplicating shop may not be consistent with the aims and purposes of the ASUC, whose primary responsibility is to provide services for students.

Graphic Arts does not benefit the students as much as the ASUC store, the bowling alley

and the ski lodge do, for example, Forrest Tregga, director of ASUC activities, said. It also does not relate to student programs as much as other ASUC activities do, he added.

The space planned in new Eshleman Hall for Graphic Arts could be more appropriately assigned to the Department of Intercollegiate Athletics, Levine said.

The main reason for making this proposal now, Levine said, is that space allocations for the new

Eshleman Hall must be made immediately, so the Senate must decide whether it is worthwhile using one entire floor of the building for Graphic Arts.

If Graphic Arts is not put in Eshleman Hall, it will have to be sold because there is no other place to put it. It cannot stay where it is now, in old Eshleman Hall, because the ASUC sold the building to the University.

According to Levine, the Department of Intercollegiate Ath-

(Continued on page 3)

BEARS

One of Roos/Atkins February specials is a genuine alpaca sweater at the somewhat amazing price of just 19.90! This is a beauty, a v-neck, with raglan sleeves that comes in black, gold, blue, red or green. If your budget is really limited, R/A has another great sweater buy, too: a lambswool cardigan at just 10.90. This one's in the new colors: camel, black olive, or blue green. Drop in today & check them out.

ROOS/ATKINS



Why you should buy this R/A Cashmere and Nobody else's!!!

Because we tested it with comparable Cashmires and it's proven out standing at 16.90... Better yet, 2 for 29.90!

Jeweler shaping, More complete full fashioned styling, More weight, Fuller cut than any other tested! Exquisite soft knit... smooth flat neckline... and luscious colors! 36-40 Buy at least 2 with supercharge!

Today! Valentine Fashion show 3:30 P.M. Drawing for free "Tom Jones" Blouse!

California Shop - 2530 Bancroft Way.

Student Assistants

School Volunteers Program Needs Teachers' Helpers

The School Resource Volunteers Program (SRV), which assists the teachers of Berkeley's public schools, needs more students of all majors, grade levels and interests to work with the program.

Volunteers are being used on a regular basis, at least two hours a week, in three major areas.

- As classroom help, SRV members assist in taking roll, correcting papers and working with individual or small groups of children—slow learners, fast learners or foreign born children. They will help in all subjects.

- As study center help, they assist children in all subjects after school.

- As club leaders, they are especially needed to work with science clubs. In addition, SRV members work with art, music, drama, math, and ham radio clubs.

According to the by-laws of SRV, "volunteers supplement the work of public school personnel by relieving them of some of their time-consuming, non-teaching tasks."

In addition, SRV members "supplement and enrich the educational program by providing services beyond the usual scope of the school, or for which school personnel are not available."

Any University students who

are interested in the program should contact the Program Director, Mrs. Violet Smith, 10-4:30 on February 13 and 14 at Stiles Hall, 2400 Bancroft Way, or 11-5 on February 17-21 at the University YWCA, 2600 Bancroft Way.

As an example of the work SRV volunteers do Burbank Junior High School reports that Mrs. Maryse Tondeur, a native French woman and the wife of a graduate student, is helping in a French class, putting lessons in the French textbook on tape, so that the pupils can have a genuine French accent to imitate.

Dean to Recruit For Institute

Milton C. Towner, dean of the American Institute for Foreign Trade, will visit the University Tuesday. Students interested in foreign trade may make an appointment to see Towner through Will Vujovich, engineering placement, Student and Alumni Center.

Towner heads the American Institute for Foreign Trade, a post-graduate school specializing in international commerce. Courses at the school are rigorous with about four hours a day spent on language and the rest of the time spent on area study and technical aspects of trade.

Before he headed the Institute, Towner was head of the Korean training section of Economic Cooperation Administration. He graduated from Coe College, Iowa, and gained his doctorate at the University of Iowa.



He who is not prepared today, will be less so tomorrow—
OVID

Prepare now—so you're not up a creek tomorrow.

The best time to start preparing for your financial future is while you're still in college; you'll be glad you did when you look back and see the value of your head start.

Life insurance is an integral part of any financial planning and Provident Mutual is up to date with the latest plans and features especially designed for young adults.

Don't put it off. Contact our campus office now for a talk about your financial future.

The
Stephen L. Davenport
Agency
2015 Center St.,
Berkeley 4, Calif.
TH 5-3583

PROVIDENT
MUTUAL LIFE
INSURANCE COMPANY OF PHILADELPHIA

THE DAILY CALIFORNIAN

Published daily except Saturday and Sunday and University Holidays during the University year by the Associated Students of the University of California. Entered as second class matter on March 1, 1901, in the Post Office, Berkeley, California, under the act of March 3, 1879. Subscription price \$6.00 a year; \$3.50 a semester.

HOWARD TOURS

1964 YEAR THE ORIGINAL STUDY TOUR IN THE PACIFIC

CIRCLE WORLD

NINE UNIVERSITY CREDITS
57 DAYS \$2599

Enjoy your greatest summer and if you wish, earn almost one full quarter of university credit by enrolling in the optional San Francisco State College summer and post sessions held in conjunction with the tour. Program includes Hawaii; Japan; Hong Kong; Saigon; Angkor Wat; Bangkok; India, with visits to Calcutta, Taj Mahal, Delhi and Kashmir; Cairo, with its Sphinx and Pyramids; Lebanon; Jerusalem; Israel; Istanbul; and Athens with its Parthenon and Acropolis. Return via Rome, with time for independent visits in Europe. Such a world trip is the "ultimate", an unmatched travel experience. Offers all first class services ashore and the most extensive schedule of special dinners, cosmopolitan entertainment, evening events and social functions; plus all necessary tour services.

SO. AMERICA

SIX UNIVERSITY CREDITS
46 DAYS \$1799

Travel roundtrip by air from Miami to Panama - Colombia - Ecuador - Peru - Chile - Argentina - Uruguay - Brazil on this most diversified itinerary covering all of Latin America — a full program of very best hotels, meals, sightseeing, evening activities, social functions, and special events — plus all essential-tour services — highlighted by excursions to the Andean highlands, the lost cities of the Incas, Iguassu Falls, and Brasilia, the city of the future — a truly great educational and enjoyable summer vacation adventure. It is even more enriching for members who enroll in the optional San Francisco State College Summer Session courses.

APPLY

MRS. ROBERT WARD

2710 Channing Way
Berkeley 4, Calif.

TH 3-4493

HOWARD TOURS

Many Speakers

ASUC, Stiles Hall, Sponsor Race Relations Conference

Final plans have been formulated for the ASUC-Stiles Hall co-sponsored Student-Faculty Conference on "The Dynamics of Race Relations in California," March 20-21.

The participants in the conference include Loren Miller, civil rights attorney, author, and NAACP official, who will give the keynote address; Mrs. Eileen Her-

nandez, assistant State Fair Employment Practices Commission chief, who will speak on "Discrimination in Employment;" W. Byron Rumford, assemblyman, who will discuss "Equality of Opportunity in Housing."

Also participating will be Wilson Riles of the Commission on Equal Opportunities for Teachers, California Department of Education, speaking on "De Facto Segregation in Schools," and Hubert Coffey, University professor of psychology, on "Interpersonal Relations across Racial Lines."

Herman Blake, a teaching assistant in the sociology department, will give the summary statement.

The conference will also include faculty-led student groups, a panel discussion and a social event.

Faculty personnel who are interested in helping plan the conference should contact the Conference Chairman, Peter Lathrop, Olympic 5-5100, John Martin of the Stiles Hall staff, Thornwall 1-6010, or Bill Miller, Chairman of the ASUC Union Program Board Public Affairs Committee, Thornwall 5-8329.

Applications For Co-op Rep

Applications are being accepted for women's co-ops and small approved living group representative in the ASUC Senate.

The rep serves as a voting member of the ASUC Senate and on one of the Senate's legislative committees. An applicant need not actually be a member of a women's co-op or small approved living group.

Applications are available in 410 student Union or from Bob Draper, ASUC first vice president.

Interviews of applicants will be announced.

Sale of ASUC Department?

(Continued from page 1) letics should be given Graphic Arts' place in the new Student Office Building because it is a student-oriented activity and its offices, including ticket sales, should be located in an area readily accessible to students.

It must soon move from its present temporary space to make room for the new Environmental Design Building, which will occupy its place.

Levine said it is better to put this department in the new Eshleman Hall than to reassign it to an off-campus location on Anna Head property at Haste and Bowditch.

If the Department of Intercollegiate Athletics does occupy Eshleman Hall, it will be "under such terms and conditions as will assure no restriction in activity programming nor reduction in total funds presently available for student functions," according to Levine.

Graphic Arts clears over \$2,000 a year, according to ASUC Accountant Garth Blier. Levine said this is nominal compared to other ASUC enterprises.

If the Department of Intercollegiate Athletics does move into the new Eshleman Hall it will be charged enough rent so that there will be no loss to the ASUC by dropping Graphic Arts.

The ASUC has offered to sell Graphic Arts to Ed Kerwin, manager of the Graphic Arts depart-

ment, who could run the department as an off-campus enterprise.


Students will then have to get printing done from an off-campus printing shop or from Central Stenographic in University Hall.

Central Stenographic, which is run by the University, does mimeographing and offset printing.

Wilke Appointed To State Board

Governor Edmund G. Brown recently appointed Charles Robert Wilke, former chairman of the University's chemical engineering department, to the State Board of Registration for civil and profession engineers.

Card's
DWIGHT WAY HARDWARE
 TH 1-1202
 2480 Shattuck Ave.
 Berkeley 4, California

FLAMINGO

MOTEL
 30 Modern Units
 BERKELEY
 Free Continental Breakfast
 Room Phones - Television
 Kitchens - AAA Approved
 4 Blocks West of U.C. Campus
 1761 University TH 1-4242

CURRENT NOTES - MORE TO COME
 Psych 1a, Poli Sci 100(1), 118b
COMPLETE SEMESTER SETS

Anatomy 25	Geol 10
Anthro 1, 2b, 118	Hist 4b, 8b, 17b, 134b,
Arch 122	143c, 174b, 189b
Art 1B	Italian 39a
Astro 1	Linguistics 35
Bac 1, 2	Math 1b, 3a, 3b, 16a
Botany 1, 10	Music 27a, 27b
Bus Ad 18, 101, 118	Paleo 1, 10
Chem 1a, 1b, 8	Philos 6a, 6b, 20a, 20b, 101
Classics 10b	Physics 2a, 2b, 4a 10
Econ 1a, 1b, 2, 113	Physio 1
Eng 103	Poli Sci 1, 2, 100, 101, 106,
English 1b, 30, 44b, 46a,	120, 163
46b, 116, 117b, 117s,	Psych 1a 1b, 5, 33, 100b
125d, 125e, 130b,	136
130c, 152, 158b	Scandinavian 108
French 39b	Soc 1, 30
Genetics 10	Zoo 1a, 1b, 10, 113
Geog 1, 121b, 131	

ybate lecture notes
 ESTABLISHED 1934
 2440 Bancroft Way TH 3-8080
 Campus Bancroft Building

Everything in Wearing Apparel For Big Men

TALL MEN SIZES 6' 1" to 7' 2"

BIG MEN SIZES 44 to 66

ROCHESTER CLOTHING
 Corner Mission at Third - San Francisco
 YU 2-6455 Est. 1906
 (Free parking adjacent to store on Mission)
 Send for Free Catalog

BERT'S FOREIGN CAR REPAIR

FROM ORLANDO
 Shattuck Ave
 Parker

2603 Shattuck Ave
 Turn on Parker

BERKELEY TH 8-4353

15% DISCOUNT FOR STUDENTS on labor

Complete service, repair and overhaul jobs on:
BRITISH, FRENCH GERMAN and ITALIAN CARS




BEAUTY and the BEARD
 (YOU'LL LOVE THE BLENDING)

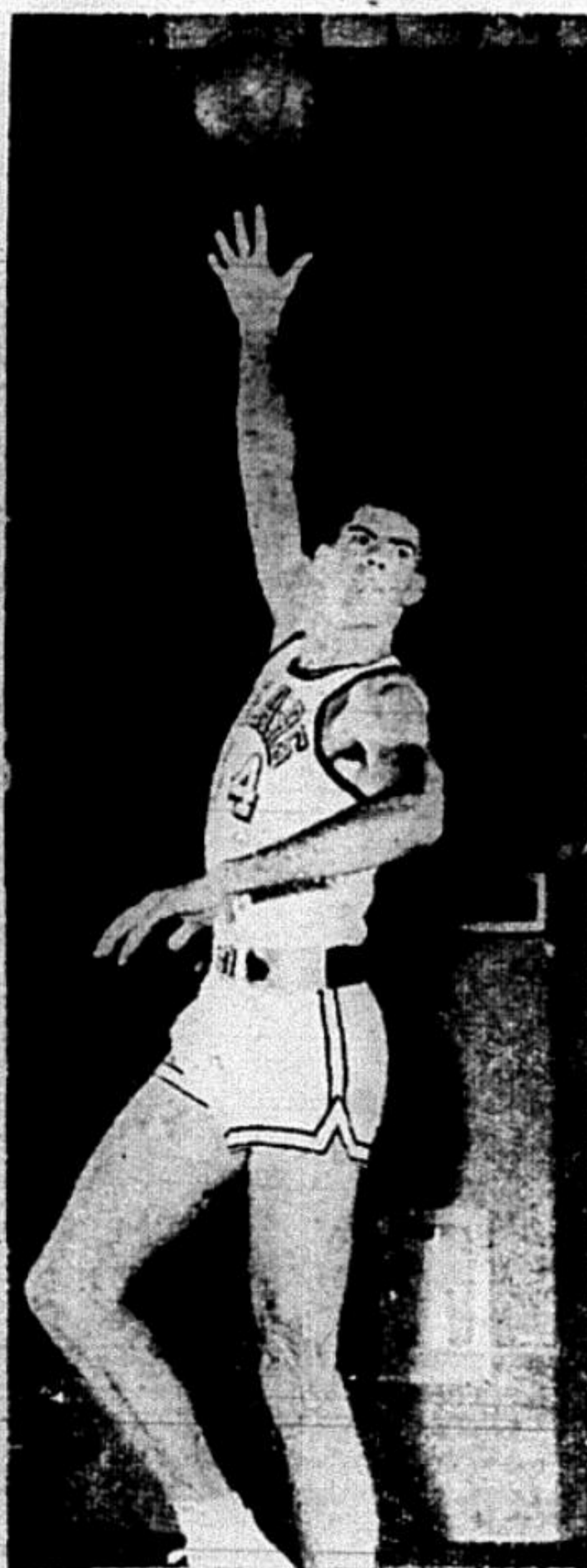
When an irresistible force like Ann-Margret meets an immovable object like Al Hirt... POW! You know she can sing but wait 'til you hear him! And with Al on his horn for extra good measure, "Beauty" and "The Beard" make a most happy "Bill Bailey," "Just Because," "Personality" and many more. Get this joyous album today. You'll love it. It's the blend.

RCA VICTOR
 The most trusted name in sound

Beauty and the Beard
AL HIRT · ANN-MARGRET



Statistics Favor Stanford Five in Big Games



CAMDEN WALL
wary of over-dose

BY RICHARD HOLMES
Oh no. That's all that can be said after analyzing season statistics on the Stanford Indians and comparing them to the figures on California.

All the statistics are in favor of the men from the Farm.

The Stanfordites have a slight edge in field goal percentage, 42 per cent-40 per cent, a much better free throw percentage, 74 per cent-60 per cent, a telltale edge in rebounding against their opponents and have outpointed their opponents an average of 7.3 points per game to Cal's .8 advantage over its opponents.

Stanford has the height edge at every position except center, where Camden Wall is two inches above Tom Dose, but Wall's weak knee negates the height advantage.

As a matter of fact, both centers have less than perfect underpinnings—Dose's is so bad that he has been working out only once a week.

If any additional evidence is needed to prove the Indians' superiority on the boards, someone who ought to know, UCLA forward Jack Hirsch, said that Stanford was much tougher in the retrieve department.

The scene of the downfall of the Golden Bears is Saturday night's hard-fought battle was the free throw line. It may well be their Waterloo against Stanford, which hits 74 per cent of its charity tosses to the Bears' poor 60 per cent.

The one spot that the California Golden Bears outdo the Farmers is in their ability to handle the ball. Stanford was killed by UCLA's fabled press, but the Golden Bears did not lose the ball once to the Bruins' pressure tactics.

That is easy to explain in view of the fact that all of Stanford's starters were forwards or centers before this year, whereas all of Cal's top quintet but Wall have played the guard position.

The Stanford lineup consists of a group of specialists. Kent Hinkley and Tom Dose are outstanding shooters from anywhere up to 20 feet. Clayton Raaka is a prolific rebounder, as is former all-American Tom Dose. Hollis Moore and Bob Bedell are the outstanding defenders on the team.

However, it is obvious that the Indians lack the one specialist that carried them to a share of the AAWU title last season, and that is a feeder, the likes of which the Cards haven't seen since dead-end Don Clemetson packed up his scalpel and left for Cal's med school.

The battle for second place in the Big Six may be decided at the forward spots, where inexperience is the rule. Both teams are starting one sophomore and one junior.

Cal must be more aggressive on the boards, particularly at these positions, in order to control and hopefully win the games.

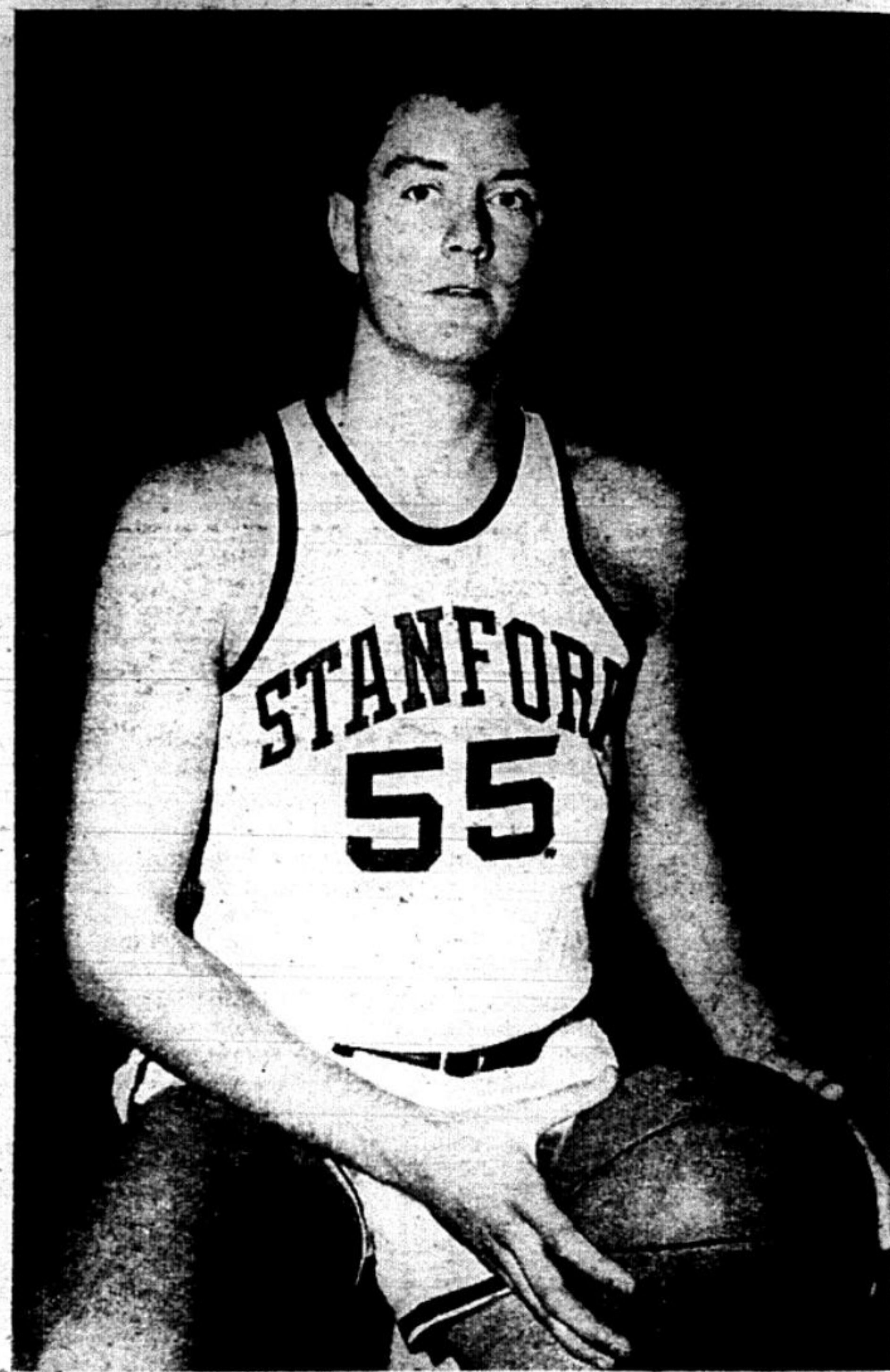
Indeed, after the tilts are over, Howie Dallmar may be wondering, "Is one Dose enough?"

The Daily Californian

SPORTS

LOWELL HICKEY
Sports Editor

BILL ROWEN
Assistant Sports Editor



TOM DOSE
weak legs have been hurting

Novices Come Through

Boxers Surprise Nevada, Tie 4-4

BY HOWARD SANGER

Coming off an encouraging 4-4 tie against Nevada at Reno, California's boxers will face Chico State tomorrow in Harmon gym at 7:15 p.m.

Two of the five novices, on whom Coach Nemir was counting so heavily against Nevada, came through with clutch victories.

Tom Corrigan (139) stopped Tom Jarvas in two, while Cal teammate Jerry Knapp, belting his opponent along the ropes, likewise scored a TKO in two rounds.

Veterans Paul Rein and Tom Gioseffi scored the other two Cal victories.

Two of Nevada's wins came by way of the TKO route. Larry Williamson belted out Kunio Inoue (126), and Skip Houk (147) stopped Dave Weiner. Nevada's Chuck Breese (132) and Jim Evans (HW) got decisions over Cal's Paul Bell and Bob Winter.

From the opening bell, the battle which was not decided until the last bout of the evening, had the large Reno crowd on its feet.

Attempting to battle it out with

conference champ Williamson, Inoue tried to match the power of the experienced Williamson.

In the first round Williamson dropped Inoue with smashing rights; the end came in the third when Inoue was dropped by a punch to the stomach.

Williamson has now won his last 8 straight bouts, 7 by TKO's.

Powerful Skip Houk (147), bidding his time in the first two rounds, caught Cal welterweight Dave Weiner with a vicious shot to the head. Weiner went down and Coach Nemir moved in to stop the fight against Weiner's wishes.

Cal letterman Paul Rein found himself in the wildest fight of the evening when he locked up with newcomer John McSweeney, a Nevada gridiron hero.

The third and final round of the bout had the spectators on their feet.

At the end of the fracas the fighters were battling toe-to-toe along the ropes, exchanging sharp hooks. Rein got the nod in the wild fray.

Novice Tom Corrigan (139) methodically boxed Nevada's Tom

Jarvas at long range in the opening round, landing to the head and body.

In the 156 pound bout, Tom Gioseffi, handily whipped Nevada boxer Dave Stix. Stix was last year's 147 lb. Conference champion.

Going into the last bout of the card, an upset was in the making as Cal led 4-3. However, it was not to be.

Frosh Track Team Weak in Jumping Events,

BY STAN SMITH

Freshmen! If you can jump, Edwards Field is the place for you this spring.

The initial sign-up for the track and field team, held last Tuesday, indicates that the Frosh cindermen will be hard pressed for points in the broad jump, the high jump, and the hurdles in this year's competition.

A total of 34 aspirants produced only two broad jumpers, a high jumper, and a hurdler. The team desperately needs more depth in these events before facing a schedule which includes some of the best young competition around.

If you were thinking about some other event, though, you

had better reconsider. Headed by a strong turnout in the pole vault and distances, the early-season roster paints a potentially rosy picture for veteran coaches Brutus Hamilton and Al Ragan.

Outstanding in the middle and long-distance group are Bob Price, who starred on last fall's varsity cross-country squad; Poal Graham, who has been clocked at 9:26.6 in the 2-mile and 1:55 in the 880; Dick Elliott (4:19 mile), and Martin Koenekamp (4:23.3 mile and 1:56.3, 880).

Versatile Jerry Bradley, who snagged passes as a flanker on the freshman football squad, leads a potentially superb group of sprinters. Bradley boasts a 9.5 hundred which will require little

improvement to establish him as one of the top sprinters on the coast.

Michael Boskin backs Bradley with a 10-flat hundred and a 22.3 220. In the latter event Richard Snow leads the squad with 21.8.

Mike Shaffer's claim as the top quarter miler, at 49.0, will be hotly contested by John Diehl and Larry Hengl, each having times less than a second behind him.

Early standouts in the throwing are Roy Johnson with the javelin, Kenneth Cole and Keith Hansen in the discus event, and Art Shartsis and Michael Pretto with the shot.

This Week In Sports

TODAY

SWIMMING—Varsity vs. Long Beach City College, Harmon pool, 10 a.m.

WRESTLING—Varsity vs. UCLA, Harmon gym, 3 p.m.

BASKETBALL—Varsity vs. Stanford, Harmon gym, 8 p.m.

TOMORROW

RUGBY—Varsity at SC.
WRESTLING—Varsity vs. Oregon and Washington at Eugene, 2 and 8 p.m.

SWIMMING—Varsity vs. Cal Poly and Arden Hills, Harmon Pool, 10 a.m.

BOXING—Varsity vs. Chico State, Harmon gym, 7:15 p.m.

GYMNASTICS—Varsity vs. Long Beach State, Harmon gym, 9 p.m.

BASEBALL—Varsity vs. alumni, Edwards Field, 3 p.m.

BASKETBALL—Varsity vs. Stanford, 8 p.m.



TOM GIOSEFFI
and veteran comes through

Swimmers Face Arden Hills

In a killing schedule, California's swim team will have few days to compete in three meets in Harmon Pool, against Long Beach City College today, Arden Hills and Bakersfield City College in a tri-meet tomorrow, and UOP on Monday.

By far, the toughest competition will come from the team with the innocent sounding name—Arden Hills.

Arden Hills is an independent AAU club boasting some of the top swimming talent in Northern California. Among them are Burton, who has broken 5:00 in the 500 freestyle, and Ferris, who is close to 2:10 in the 200 butterfly.

Like Cal, Arden Hills was not able to topple Stanford in their recent meet on the Farm. But the

independent swimmers put up "a very tough fight," according to Cal coach Pete Cutino.

Based on the Cal swimmers' defeat of San Jose State, the Cal-Arden Hills match could come down to the wire.

Cutino will be depending particularly on Grady Romine, who has been improving spectacularly in the 100 free, and Ed Duncan, top butterfly man.

The match between Duncan and Arden's butterfly man Ferris could be one of the highlights of the season.

Ordinarily, the rest of the competition would not be too strenuous, but having so many meets back-to-back will make things very tough for Cutino's swimmers.

Announcements

CREW LAUNCH DRIVERS

Anyone interested in being a crew launch driver should contact coach Jim Lemmon at the Athletic Department or Senior Manager Lee Johnson at TH 8-9669.

BASEBALL MANAGERS

Baseball managers are still urgently needed for the coming semester. All interested sophomore or freshman men please contact Walt Buck at 843-9303 immediately.

WRESTLING CLUB

Weightlifting club meeting today at 4 p.m. in 95 Harmon. Meets against San Quentin and Junior Northern will be held soon.

Undefeated Gymnasts Meet Long Beach



TO FACE LONG BEACH — Veteran gymnast Steve Zahm, shown here working out on the side horse, will be performing on the still rings tomorrow evening when the Bears take on Long Beach State.

The winningest team on campus plans to twist, swing, bounce and tumble its way through another fabulous season.

Coach Hal Frey's gymnasts, undefeated in their last forty-four meets, will challenge, and, according to Frey, conquer the invading Long Beach State 49'ers Saturday at 9 p.m. in Harmon Gymnasium.

Last year Cal's musclebound athletes beat Long Beach 69-59, giving the Bears a 3-0 record against the 49'ers.

This year the Bears have improved more than the Long Beach squad, so Frey predicts a win of at least 10 points, and probably more.

Cal's strongest events are the still rings with seniors Steve Zahm and Rich Golden; tumbling with Big Six champ Mac Sutherland, Lloyd Davidson, and John Ford; side horse with Ken Schind-

ler, Rich Field, and Crodd Chin; and parallel bars with Fred Wantland, 1962 State College champ, followed by Paul Newman and Crodd Chin.

Coach Frey claims that his main problem this year is discipline. But from the record of past performances, it appears that he won't have any trouble.

In fact, he said that if the team

can get past a grueling three days — February 19, 21, and 22, they could conceivably come up with another undefeated season.

February 19 the Bears meet Stanford in Palo Alto; Feb. 21 they host San Fernando State, and Feb. 22, in a triangular meet at Sacramento, the Bears compete with Sacramento State and Los Angeles State College.

Basketball Highlights Intramurals

BY JOE VAN HOFF

Intramural basketball action continues to highlight the current season, and competition is becoming rougher as teams fight for the top spots in their respective round-robin leagues.

Alpha Epsilon Pi enjoyed a tenuous lead in one of the best-balanced of the National round-robin leagues until they suffered their first loss Tuesday night to Kappa Sigma, 24-21. Now they must win over the tough Betas to gain consideration for a winner's berth in the playoffs.

One of the leagues contains two undefeated teams which will battle each other for their round-robin title. Phi E Pi and the Phi Sigs will match perfect records in a decisive tilt to be played next week.

Other undefeated teams in the N.L. are SAE, ZBT, the Phi Taus and the Phi Psis.

In the American League, Gilman bulldozed Boalt Monday night, 43-20, to tie for the lead in the strongest round-robin league in that division. Smyth and Gilman, now both sporting 4-1 records, will probably furnish the A.L. with a worthy champion. Smyth defeated Gilman, 37-29, in a previous encounter.

Herrick Manor, playing against slightly weaker competition, is the only undefeated American League team.

In the all-important total-point standings, each league's top ten at the beginning of the semester were:

NATIONAL LEAGUE

1. Sigma Chi
2. Sigma Alpha Epsilon
3. Phi Epsilon Pi
4. Zeta Beta Tau
5. Sigma Phi Epsilon
6. Phi Kappa Tau
7. Sigma Nu
8. Alpha Tau Omega
9. Lambda Chi Alpha
10. Phi Gamma Delta

AMERICAN LEAGUE

1. Boalt
2. Ehrman
3. Deutsch
4. Smyth
5. Bowles
6. Barrington
7. Putnam
8. Oxford
9. Cloyne
10. Norton

Following is another reminder of important meetings and deadline dates for intramural participants:

February 17—4 p.m. meeting in Room 175 Harmon of representatives from U.C. League soccer organizations.

Stereo & Hi Fi Components

DISCOUNT PRICES

We Sell and Service Wollensak



THE


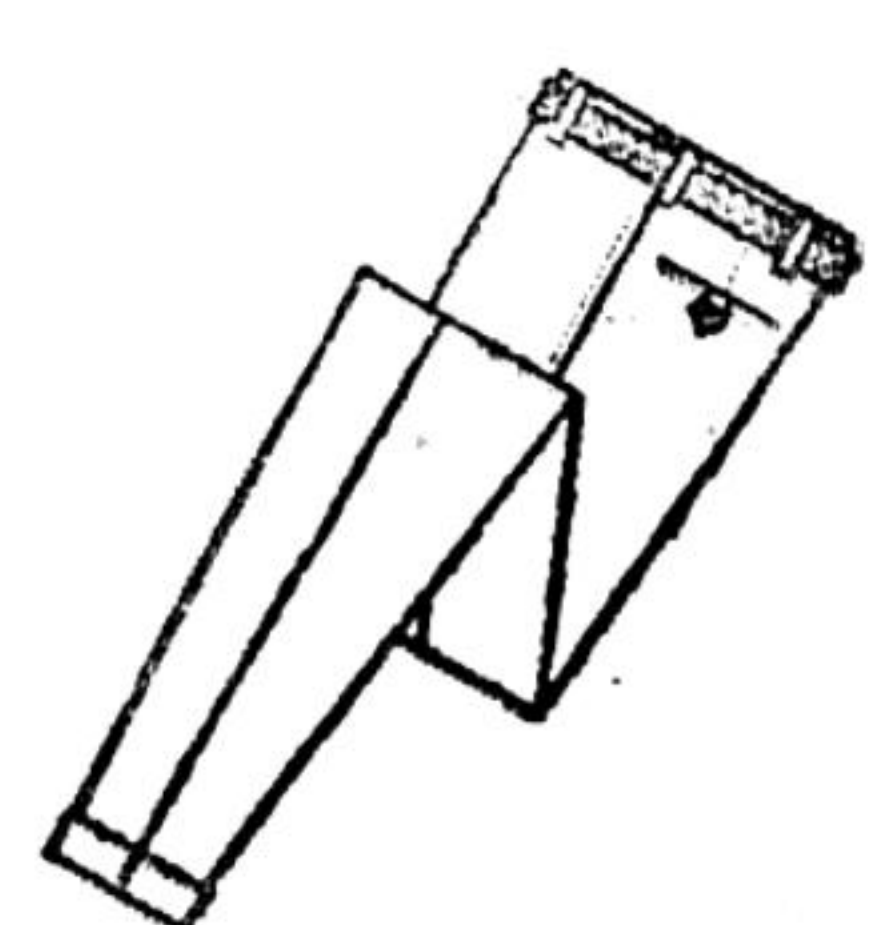
sounding board

2342 Shattuck TH 3-7031

Daily 10:30 a.m. - 9 p.m.
Sat. 10:30 a.m. - 6 p.m.
Sunday 1 p.m. - 5 p.m.

The enrollment period for the supplemented student health insurance program is now open. Enrollment cards will be accepted by Continental Casualty Co. until March 1, 1964. Descriptive brochures and enrollment cards are available at the ASUC accounting office, Room 207, Eshleman Hall.

LOOK TO VAUGHN'S FOR A PHENOMENAL SELECTION OF FINE SPORT SHIRTS, TRADITIONALLY TAILORED FOR US BY SOME OF NEW ENGLAND'S FINEST SHIRT-MAKERS.

ALL LESS 35% DISCOUNT TO STUDENTS AND FACULTY . . . INCLUDING ALL OTHER MERCHANDISE IN OUR ESTABLISHMENT. SHOW IDENTIFICATION FOR PERMANENT DISCOUNT CARD.

VISIT OUR LARGE CAMPUS TROUSER DEPARTMENT. YOU'LL FIND IT STOCKED WITH ODD COTTON CHINO TROUSERS, DACRON-COTTON BLENDS AND SYNTHETIC WASH & WEAR SLACKS.

4.95	3.21
5.95	3.83
6.95	4.51
7.95	5.16
8.95	5.82

VAUGHN'S

Student Clothing Union

2333-TELEGRAPH AVE. BERKELEY

THURS. EVENINGS 'TIL 9:00

TH 8-1906

While You're Young

Right now, that is, you should take advantage of science's most modern techniques for the perfection of your figure or your build. The science of physical culture is available to you at VIC TANNY'S, together with steam bath (nothing better for your complexion), mechanical massage (helps trim problem areas), and sunlamp room. Private, individual consultation at no charge.

LET VIC TANNY'S HELP YOU.

Student rates now available . . . Call today!

848-9350
2620 Telegraph
Berkeley

Alumni Day Chairman Named

Roger J. Traynor, associate California Supreme Court justice, has been named chairman of the Boalt Hall Alumni Day planning committee.

Final arguments in the Moot Court competition, Alumni attendance at classes, the Walter Perry Johnson Lecture on Law and Public Affairs, reunion luncheons, panel discussions and a Citation Awards Dinner will be included on the April 11 Alumni Day program.

Other committee members are: Alec Cory, San Diego attorney; David A. Long, Oakland attorney;

David W. Louisell, faculty member of Boalt Hall; and Verlyn Jensen, president of the Hall's student association.

Senior Class Meets Today

The Senior Class will meet today at La Val's Gardens, north-side, from 4-6 p.m. Admission for men is \$1.50 without a class card and \$1 with one. Admission for women is \$1.25 without the card and 75 cents with one.

Quadricentennial Lecture

Sir Tyrone Guthrie, a man as unlikely as his name, opened the Shakespeare Quadricentennial Lectures Wednesday with a lively discussion of Shakespeare and the Contemporary Stage.

"The Guthrie Hamlet" is almost a legitimate expression in the world of theater and, strangely enough, was coined by taxi drivers during last summer's opening of Guthrie's unique new theater in Minneapolis.

A well-known director in the English-speaking world and former director of the Old Vic in London, presented "Hamlet" as a completely contemporary play.

As Travis Bogard, chairman of the dramatic art department, termed it, Guthrie has "set himself against stereotype."

After a brief sketch of the history of the theater, Guthrie explained his reason for the contemporary production of "Hamlet," saying that "every age has got to interpret Shakespeare according to their own society and actions. There is no right way to interpret Shakespeare as there is no right way to do anything."

Guthrie strongly advocated presenting more productions on stages "in the round." In other words, the audience would be half way around each side of the stage. Although the actor must have his back turned to some of the audience some of the time, the necessary movement of the actor would make a play more choreographically feasible as well

New Shakespeare On Modern Stage

as more fluid in movement.

Another point in favor of stages, "in the round" is the fact that more people can be accommodated in the same amount of cubic space making audience reaction a more cohesively powerful element in the production. In fact, Guthrie stated, "People should be uncomfortably crowded."

Throughout the talk, Guthrie gave several hints, on "how to enjoy Shakespeare without really trying."

First, in any Shakespearean production, an audience should count time sequence and place as relatively unimportant. "If time

and place were important, Shakespeare would have told us, if he didn't, why bother inquiring?"

Secondly, Guthrie pointed out that only when great demands are made on the audience can you get extreme pleasure out of a performance. In a theater of ideas such as Shakespeare wrote for, this demand is accomplished.

One final question that Guthrie posed to his audience was, "Why does Shakespeare have to be held up as education?" He continued by saying it is a tragedy that the theater has to pretend to be educational. "Art is not to educate but to delight." And according to Guthrie, the main delight of art is the sharing experience; the sharing between actors, between actors and audience, and between the audience itself.

Signups for Travel Programs

Monday is the deadline for signing up for one of the three Easter travel programs sponsored by the National Student Association and open to University students. People signing up after Monday cannot be assured of receiving a ticket.

More information about where to sign up for the programs, which last eight days each, may be obtained from NSA campus Rep. Eileen Spielman at THornwall 5-9541, TH 5-9127, or TH 5-9590.

One of the programs, "Easter Week Fiesta with USNA," includes four days in Mexico City and four days beachside in Acapulco. The price of \$190 includes round-trip air fare, motel and breakfast accommodations. Among other things, students participating will see the University of Mexico and a bullfight.

Another program "Easter in Hawaii," is available for \$259 which includes round-trip air fare, eight nights accommodation in a beach-side Waikiki apartment, luau, surfing lessons, and a visit to the outer islands.

The third program, primarily for students interested in skiing, is in Aspen, Colorado. The price of \$150 covers round-trip air luncheons, panel discussions, and fare, hotel accommodations, and kitchenette facilities stocked for breakfast.

HILLEL FOUNDATION
2736 Bancroft Way
Friday, Feb. 14, 8:00 p.m.
Sabbath Services & Oneg Shabbat
"PAGAN ISRAEL"
Richard Webster, Prof. of History
Sunday, Feb. 16, 6:00 p.m.
Hillel Supper.
Call in for reservations: 845-7793

THE RIDDLE OF EVIL
Campus Pastor Sig Lokken will discuss such questions as "If God is both good and all powerful, then how can we account for the existence of evil?" "What is the cause of evil? Is it man? or God? or another force?" This forum will take place at the Lutheran Campus Center, 2311 Bowditch, on Sunday, February 16, at 7 p.m. Supper is served at 6 p.m.

TRINITY METHODIST CHURCH
Dana, Durant and Bancroft Way
Sunday, February 16
First Sunday in Lent
FROM GALILEE TO CALVARY
9:30, 11 a.m.—Morning Worship and Church School
I. He Cursed a Tree.
Lenten Organ Concert

Berkeley Fellowship of Unitarians
Fellowship Hall
1924 Cedar
Clark B. Olsen, Minister
Sunday Service 10:30 a.m.
"OBSERVATIONS ON THE ECUMENICAL COUNCIL"
Father Francis Maurovich, guest lecturer and editor of The Catholic Voice.

FIRST CONGREGATIONAL CHURCH
Dana, Durant, Channing Way
9:00 and 11:00 a.m.
The First Sunday in Lent
Public Worship
The Sermon by Dr. Browne Barr
on
THE PARABLES OF JESUS
Broadcast 11:00 a.m. by KSAY (1010)

THE FIRST UNITARIAN CHURCH
Above Arlington, Up Terrace, Rt. on Craft, Kensington
Dr. J. Raymond Cope, Minister
Services, 10:45 a.m.
"HUMANITY NEVER HAS HAD BUT TWO RELIGIONS"
Arthur Hills, Organist
Chancel Choir


Are YOU Our Tenth Man?
Berkeley's youth orthodox congregation invites you to a
Sunday Morning Minyon and Lox & Bagel Breakfast—no charge
Feb. 16, 9 a.m. Rabbi Saul Berman will speak on "The Meaning of Prayer to the Modern Intellectual."
Congregationa Beth Israel Bancroft & Jefferson
For information regarding our full program of activities call:
Rabbi S. Berman, TH 3-5246 or
Dr. J. Ritchie, TH 8-3633

SPRING RECEPTION
NEWMAN HALL
2630 Ridge Road
TONIGHT 8:30-12:30 p.m.
"The time to meet the co-ordinating council, faculty, and chaplains."
REFRESHMENTS ALL WELCOME

VEDANTA
India's Universal Philosophy and Religion
Sunday, February 16
8:00 p.m.
"HOW DOES SRI RAMAKRISHNA APPEAR TO THE WESTERN EYE?"
Swami Chidrupananda
VEDANTA CENTER
Haste and Bowditch Streets
Berkeley
The public is invited

UNITARIAN COLLEGE FELLOWSHIP
(Liberal Religious campus organization)
A SUPPER (35c)
MEETING — FOLK SING
Sunday, February 16
6:30 p.m.
STARR KING SCHOOL
2441 Le Corte Ave.
(2 blocks north of campus off Euclid)

CHRISTIAN SCIENCE CHURCHES
Branches of The Mother Church
The First Church of Christ, Scientist, in Boston, Massachusetts
FIRST CHURCH OF CHRIST, SCIENTIST
2619 Dwight Way, corner Bowditch Street
SECOND CHURCH OF CHRIST, SCIENTIST
1521 Spruce Street, near Cedar Street
THIRD CHURCH OF CHRIST, SCIENTIST
2715 Prince Street, near College Avenue
"SOUL"
Lesson-Sermon Subject for Sunday
FEBRUARY 16
SERVICES: Sunday, 11 a.m., Wednesday, 8 p.m. (First Church also has a Sunday evening service at 8 o'clock.)
SUNDAY SCHOOL: 9:30 and 11 a.m. at First Church; 9:30 and 11 a.m. at Second Church; 11 a.m. only at Third Church.
FREE READING ROOMS:
2142 Center Street. Open 8 a.m. to 9 p.m., except Wednesdays, when it closes at 6:00 p.m. Sundays and holidays, 2 to 5 p.m.
2482 Telegraph Avenue, near Dwight Way. Open 8:30 a.m. to 9 p.m. except Wednesdays, when it closes at 7 p.m. Sundays and holidays 2 to 5 p.m.
892 Coluse Avenue. Open 9:30 a.m. to 5 p.m. daily; also 7-9 except Wednesdays when it closes at 5 p.m. Closed Sundays and holidays.
2715 Prince Street. Open 1 to 4 p.m. daily, except Sundays and certain holidays. Also Wednesdays 7 to 8 p.m. and immediately following services.
ALL ARE CORDIALLY INVITED

THE MINISTRY OF
THE UNITED PRESBYTERIAN CHURCH, U.S.A.
IN BERKELEY

Durant Presbyterian
2024 Durant, near Shattuck
Church School 9:30 a.m.
Worship, 11:00 a.m.
Stuart S. Pratt, Pastor
Westminster Presbyterian
1901 8th St., at Hearst
Church School 9:45
Worship 11:00 a.m.
Frank G. Mar, Pastor
St. John's Presbyterian
2440 College, at Dorby
Worship: 10:30 a.m.
James Comfort Smith, Pastor
First Presbyterian
Dana & Channing Way
Worship and Church School
9:00 and 11:00 a.m.
Evening Worship 7:30 p.m.
Harold England, Pastor
Calvary Presbyterian
1940 Virginia, at Milvia
Worship and Church School
9:30 and 11:00 a.m.
Laurence P. Byers, Pastor

ST. MICHAEL'S LUTHERAN CHURCH
2516 Durant Avenue
Sunday, February 16
"NOTHING AND EVERYTHING"
by Rev. H. P. Schaeffer
9:15 a.m.: Family Service
10:00 a.m.: Adult Class
11:00 a.m.: Worship Service

ST. MARK'S EPISCOPAL CHURCH
Bancroft & Ellsworth
SUNDAY, FEBRUARY 16
7:30 a.m.—Holy Communion
9:00 a.m.—Morning Prayer and Sermon.
11:00 a.m.—Holy Communion and Sermon.
5:30 p.m.—Evensong.
Tues. 12:10—Holy Communion followed by lunch
Thurs. 7:15 p.m.—Holy Communion

CAMPUS MEMO

TODAY

Chinese Students Association: 3:5 p.m., Stephens Lounge, Student Union. New Chinese students welcome. Refreshments.

Elections Council: noon, 406 Student Union, meeting. Everyone interested is welcome.

Folk Dance Party: 7:30 p.m. to midnight, Hearst Gym. Wear costumes. Bring refreshments.

Hillel Foundation: 8 p.m. Sabbath services. Professor Richard Webster, "Pagan Israel."

Humanist Society of Berkeley: 3 p.m., Sproul Room, International House. E. C. VanDerlaan will speak on "Some Aspects of the God Idea."

International House Auditorium: 7 p.m., social dance instruction, folk dancing, 8:15-10:15 p.m.

Madrigal Singers: 4 p.m. Regular rehearsal.

Treble Clef: 4 p.m. Regular rehearsal.

Sophomore Class: dance after the basketball game, Pauley Ballroom. Two bands, the "Excellents" and the "Greek Grabbers" will provide music.

UC Folk Dance Club: noon, North Field, Hearst Gym. Dancing.

SATURDAY

AIIESEC: 8 p.m., Professor Malm's home. Pick up directions in 113 South Hall.

Baptist Student Union: 7 p.m. Banquet. Meet at BSU Center, rides.

2601 Channing, at 6:30 p.m. for Chinese Students Club: 9 p.m.-1 a.m., Pauley Ballroom. Members free. Non-members, \$1.25. Pete Dutton quartet.

Korean Students Society: 7-9 p.m., 2 International House. Refreshments will be served.

Masonic Club: 8 p.m. Square dance and buffet dinner. The event is free, but reservations must be made by noon today.

UC Hiking Club: 4 a.m., West

Gate. Hike to top of Mt. Diablo. Bring food. Cars needed. Return by noon.

SUNDAY

Baptist Student Union: 9:15 a.m., BSU Center. Fellowship and Bible study. Cars leave for University Baptist Church, 10:45 a.m. and 6 p.m. College students will have charge of morning worship this Sunday. Richard Mowat will serve as pastor.

Hillel Foundation: 6 p.m. Sunday supper. Complete chicken dinner.

Lutheran Student Association: 6 p.m., Lutheran Campus Center, 2311 Bowditch. Supper. Forum at 7 p.m. "The Riddle of Evil" to be presented by Pastor Sig Loken.

Student Zionist Organization: 2 p.m., Hillel Foundation Library, 2736 Bancroft Way. Business meeting and discussion of future plans.

Unitarian College Fellowship: 6:30 p.m., Starr King School, 2441 Le Conte Ave. Supper, 35 cents, meeting, and folk-sing. Open to all interested in a liberal religion.

UC Hiking Club: Beginners' cave trip. Details and sign-up sheet in Room C. Eshleman.

University Lutheran Chapel: 6:30 p.m., College at Haste. Stanford students will read, "A Cup of Trembling," play about the life of Dietrich Bonhoeffer. Open to the public. Cost supper at 5:30 p.m.

Counselors

Prospective Cal Prep counselors may apply and sign up for interviews today at the activities fair, or at 412 Student Union until Feb. 21.

Grand Opening Special

All-Wool Skirt
Made to fit

only \$9⁹⁹

House of Nile
OAKLAND

5250 College
654-9928

5805 Grove St.
654-9079

CHARGE IT — ALL CREDIT CARDS HONORED

**NEW FULL RECAPS
SPECIAL**

NARROW WHITE-WALLS

FREE WHEEL BALANCING
GUARANTEED 1 YEAR
TUBE TYPE or TUBELESS

ANY SIZE

\$6⁹⁵ Exch.

Open All Day Saturday • Sunday 9-2

FYNE TIRE CO.

2424 San Pablo, Berk., 845-1416

Foreign Car Tire Specialists

THE BELL TELEPHONE COMPANIES

SALUTE: HERB SUTTON, JR.

Herb Sutton (B.S.E.E., 1961) got a good basic foundation in telephone communications. Outside plant work involving engineering and actual physical construction validates Herb's claim of starting from the ground up. But up he came, and fast!

Herb advanced from an assistant engineer in construction work to Chief Line Assigner where he is responsible for the maintenance and service of all outside telephone

equipment in the San Bruno area of Pacific Telephone.

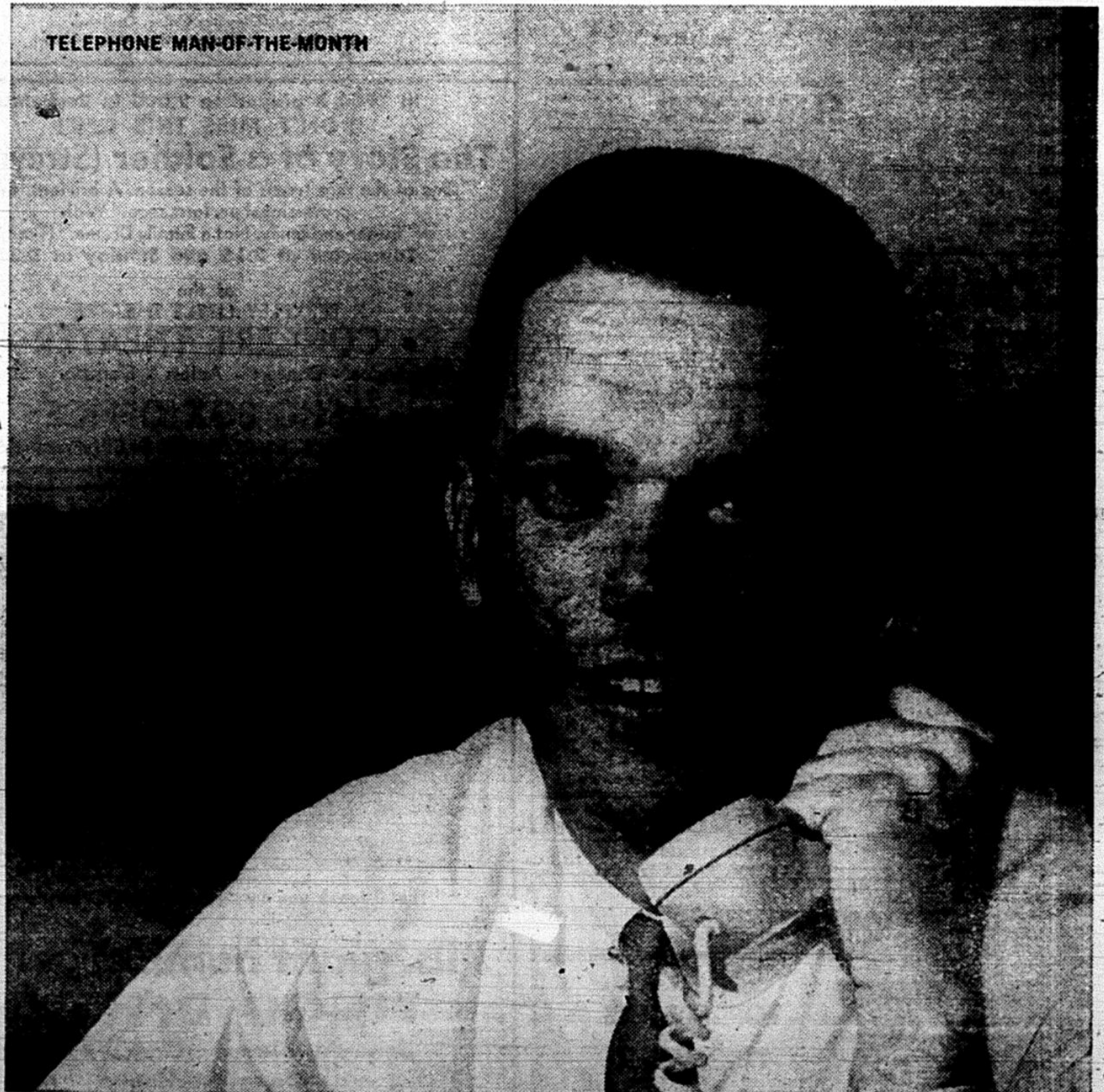
His present assignment puts him at the hub of telephone operations, a pressure job that demands the very most of his telephone knowledge and his supervisory abilities.

Herb Sutton, like many young engineers, is impatient to make things happen for his company and himself. There are few places where such restlessness is more welcomed or rewarded than in the fast-growing telephone business.



BELL TELEPHONE COMPANIES

TELEPHONE MAN-OF-THE-MONTH



HOWARD TOURS

1964
THE ORIGINAL
STUDY TOUR IN THE PACIFIC

HAWAII TOUR

SIX UNIVERSITY CREDITS

57 DAYS \$549 Plus Tax

Attend University of Hawaii Summer Session and earn college credits while enjoying beautiful Hawaii with the nationally popular Howard Tour — the program in which you "live in" and enjoy Hawaii — not just see it; the tour in which you personally participate in the very best of island living, not just hear about it.

Tour price includes roundtrip jet thrift flights between California and Hawaii, campus residence, and the most diversified itinerary of the highest quality and largest number of dinners, parties, shows, and cruises, sightseeing, beach activities, and cultural events; plus all necessary tour services.

Waikiki apartments and steamship passage are available at adjusted tour rates. Also available, optional tours to neighbor islands.

ORIENT TOUR

SIX UNIVERSITY CREDITS

44 DAYS \$1989

Hawaii, Japan, Taiwan, Hong Kong, Philippines, Thailand, Singapore — famed names you've dreamed about — all in a single "epic" program for sophisticated travelers whose intellect, adventurous spirit, and previous travel to other more accessible areas make them ready for one of the most exciting and pleasurable of all travel experiences on earth. If you desire, you may also enroll in the San Francisco State College Summer Session courses offered in conjunction with this program. Price includes roundtrip air travel between West Coast and Orient, plus all first class and luxury services ashore — hotels, meals, sightseeing, all tips, and the most extensive schedule of special dinners, cosmopolitan entertainment, evening events, and social functions; plus all necessary tour services.

APPLY

Mrs. Robert Ward

2710 Channing Way

Berkeley 4, Calif.

TH 3-4493

HOWARD TOURS

WING 永光 KONG'S



SHATTUCK AT UNIVERSITY
TH 3-7464

Chinese and American Dishes
BEAT STANFORD

And top off the evening here with some great food.. Come by before the basketball game if you can't wait that long.

Food to take out

Hours: 11-11, Closed on Tuesday

French Company to Stage 'L'Alouette'

Jean Anouilh's "L'Alouette," the story of Joan of Arc, will be presented in French at 2:30 and 8:30 p.m. Sunday in Wheeler Auditorium.

The play will be presented by

ISTANBUL RESTAURANT

Near Eastern and American Dishes
Shish Kebab—Baklava—Istanbul Stew

10% DISCOUNT TO STUDENTS

1879 Solano Avenue,
next to Oaks Theater
Phone: 525-9998

the Le Treteau de Paris Theater Company, which since 1958 has made successful annual tours of campuses of the United States.

The leading performers will include Luce Vincent as Joan, Richard Clark as Warwick, Claude Richard as Baudricourt, Francois Marie as Brother Ladvenu, and Montique Sainty as the queen.

Anouilh is considered one of France's most prolific and versatile contemporary playwrights. Since his first play "L'Hermine" was produced in 1932, he has become widely acclaimed in Europe and the United States and directs all his plays in their Paris productions.

The presentation is sponsored by the Committee for Arts and Lectures. Tickets are \$3.25 for

general admission and \$1.75 for students, available at the Committee ticket office, 2620 Bancroft Way, and the box office in the Student Union.



LUCE VINCENT
As Joan of Arc

MOVIES

BERKELEY THEATERS

BERKELEY 2425 Shattuck
Thornwall 8-4300

The Award Winning
"BLACK ORPHEUS"
Special Return Engagement:
"JULES AND JIM"
with Jeanne Moreau
Box Office Opens 6:30

CINEMA Shattuck & Haste
Thornwall 8-2038

Turgenev's
"FATHERS AND SONS"
— and —
Marlene Dietrich in
"THE BLUE ANGEL"

GUILD & STUDIO
Telegraph & Haste Thornwall 8-2038

GUILD — Eugene O'Neill's
"LONG VOYAGE HOME"
— and —
Ernest Borgnine, Anne Baxter
"THE SUMMER OF THE SEVENTEENTH DOLL"
STUDIO — Ernie Kovacs in
"OPERATION MAD BALL"
— and —
Peter Sellers in
"I'M ALL RIGHT, JACK"

California Kittridge & Shattuck
TH 8-0620

Jackie Gleason, Steve McQueen
"SOLDIER IN THE RAIN"
— also —
Robert Morley
"LADIES WHO DO"

TAKE IN A MOVIE

OAKLAND THEATERS

Paramount 2025 Broadway
TW 3-2300

Tommy Kirk, Annette in
Walt Disney's
"THE MISADVENTURES OF MERLIN JONES"
— plus —
"DOG OF FLANDERS"

Grand Lake 3200 Grand
GL 2-3556

Gene Kelly, Leslie Caron
"AN AMERICAN IN PARIS"
— and —
Gene Kelly, Van Johnson, Cyd Charisse
"BRIGADOON"

Parkway Park Blvd. near
Lake Merritt
GL 2-3391

BIGGEST THRILL OF THE YEAR!
John Gaby, Alain Delon
"ANY NUMBER CAN WIN"
— and —
"IN THE DOG HOUSE"

TOWER 5110 Telegraph Ave.
OLympic 3-8022

Danielle Darrieux, Alain Delon
in
"THE DEVIL AND THE TEN COMMANDMENTS"
— plus —
"CROOKS ANONYMOUS"
with "That Carry-on Gang"

T & D 429 - 11th Street
TW 3-5505

Doors Open 12:15 Daily
Vince Edwards, Albert Finney
Carl Foreman's "THE VICTORS"
12:30—3:20—6:30—9:45
Plus: "SONG OF LONDON" in color
"MAGOO'S CHECKUP"

NORTHSIDE 1828 Euclid
TH 1-2648

STUDIO A — William Shakespeare's
"RICHARD III"
Laurence Olivier
Clara Bloom
— and —
Greek Classic
"ELECTRA"
with Irene Pappas

STUDIO B — "THE L-SHAPED ROOM"
Leslie Caron
— and —
Jules Dassin's Suspense Classic
"RIFIPI"

United Artists 2274 Shattuck
TH 3-1487

Otto Preminger's
"THE CARDINAL"
Weekdays 5:20, 8:40
Sat. & Sun. 1:45, 5:00, 8:30

OAKS Solano at Alameda
LA 6-1836

Cary Grant, Audrey Hepburn
in
"CHARADE"
in Technicolor

ELMWOOD 2964 College
TH 8-0931

HELD OVER AGAIN
Marcello Mastroianni
in
"FELLINI'S 8½"

CINE 7 MacArthur at 39th Ave.
AN 1-3382

In Color—NUDIE CUTIES
"KNOCKERS UP"
— and —
"SHAMELESS SEX"

ROXIE 519 - 17th St.
TW 3-3311

Funniest Picture of the Year
"TOM JONES"
Albert Finney, Susannah York
2ND BIG WEEK!

Fox Oakland 1819 Telegraph
TW 3-2303

Bette Davis, Carl Malden, Peter Lawford in
"DEAD RINGER"
Continuous From 12:30 p.m.
— plus —
"DR. CRIPPEN"
Tickets Now on Sale—"Liston vs. Clay"

Piedmont 41st & Piedmont
654-2727

SPECIAL STUDENT RATES!
Liz Taylor, Margaret Rutherford
"V. I. P.'s"
— plus —
Jean Seberg
"IN THE FRENCH STYLE"

TOP MOVIES THIS WEEK

Entertainment Manager
KEN BUDMAN
Assistant
JEFF MORRISON

ASUC PRESENTS
BARBARA BOYCE
— SULTRY SONGSTRESS —
BEAR'S LAIR CABARET
FRIDAY, FEB. 14 50c
9 p.m. - 1 a.m.

MARY ANN POLLAR PRESENTS
BOB DYLAN
... in a Folk Music Concert
SATURDAY, FEB. 22 — 8:30 P.M.
BERKELEY COMMUNITY THEATRE
Admission: \$2.50, 3.00 and 3.75
Tickets: Downtown Center Box Office and Variety Box Office, S.F.
Record City, Campus Records, Breuner's Box Office, Berkeley.
Sherman/Clay Box Office, Oakland
Reservations and Information—OL 3-6328

In 1960 it played to 2,000 in Berkeley.
DON'T MISS THIS ONE!
The Story of a Soldier (Stravinsky)
"One of the rare treats of the season. A brilliant, first-rate professional performance." With
"Edgar and Emily, Not a Family Drama." (Toch)
Tomorrow at 2:15 and Sunday at 8:30
at the
BERKELEY LITTLE THEATRE
• **CONCERT THEATER** •
Orchestra - Dancers - Actors - Narrator - Singer
ASUC BOX OFFICE
Eve., \$1.50, \$2.50, \$3.00. Mat. \$1.50 (unreserved)



"That'll teach you to steal my TINGO hamburger"
1 lb. giant hamburger 55¢
TINGO Drive-In
University Avenue Opposite Co-Op
Open 24 Hours

UNITED ARTISTS
"The Cardinal"
Named one of the 10 Best Motion Pictures of the year
You must see it—
—ED SULLIVAN
THE CARDINAL
AN OTTO PREMINGER FILM
SEE "THE CARDINAL" FROM THE BEGINNING
Weekdays: 5:15—8:40 p.m.
Sat. & Sun.: 1:45—5:00 & 8:30
Special Added Short Subject
WITH THEIR EYES ON THE STARS

Trident Productions
presents
the East Bay premiere of
"PERIOD OF ADJUSTMENT"
Tennessee Williams' Uncensored Broadway Comedy
OPENING FEBRUARY 28th
at the
"ON STAGE" THEATRE
4116 MacArthur Blvd., Oakland
Reserve now for the
Gala Champagne Opening
Phone 532-9558 or
351-4560
Only \$1.25 with ASUC card

Oakland Jr. Chamber of Commerce
Presents
JOHN VAN DRUTEN'S BELL BOOK & CANDLE
Last Times, Feb. 14, 15
MOUSE LODGE
1428 Alice Street—Oakland
TICKETS \$2.00 (Adults Only) at
Sherman-Clay, Oakland, HI 4-9575
Oakl. Jr. Cham. of Com., GL 1-7800

THERE'S MUSIC IN THE BEAR



Entertainment galore is appearing in the Bay Area this weekend and the following week. Coming to our own odoriferous Harmon Gymnasium will be Johnny Mathis in a concert for the benefit of Cal Camp. Sponsored by the Freshman class, the Tuesday, February 18th show should prove enjoyable and hopefully successful for Cal Camp. As a warmup to Johnny, the always popular Bear's Lair Cabaret presents the songs of Barbara Boyce tonight. The atmospheric atmosphere of the Lair usually adds to an interesting evening for Bears. Appearing again this weekend to a probable turnaway crowd, Vince Guaraldi and his trio plays at the Trois Couleur. Bears are urged to come early to be sure and get a seat. Another date to keep in mind is Saturday, February 22nd. At the Berkeley Community Theatre will appear the very popular folk singer, Bob Dylan in concert. So you can see, Bears, there is a lot to see and do.

But don't stop there. Yesterday started Chinese New Year, as you can tell from the off-color of yesterday's scratch sheet. This week of festivities includes a beautiful parade which is a good excuse to cross the bridge. It will be best if it doesn't rain, as it did last year.

There are a great many new movies in the East Bay again this week. Like a broken record, I'll repeat—if you haven't seen "Tom Jones," SEE IT!! Another excellent movie, with Albert Finney, is "The Victors." Playing at the T & D, "The Victors" should prove worthy of any Bears' time.

An after-show retreat is the Golden West Restaurant. Coming back from Oakland, or going after the show, the Golden West features excellent food by the fireside. The pizza is great as is the exclusive "Umphred" sandwich. Try it. For unusual cuisine, try the Istanbul Restaurant near the Oaks Theatre on Solano Avenue. They feature delicious Near Eastern (not Brooklyn) and American dishes. There's a lot to do this weekend, BEARS, SO DON'T BE LATE!

Tuesday, Feb. 18
 HARMON GYM—8:00 P.M.
Frosh Class For Benefit of Cal Camp
 Presents in Concert the

Johnny Mathis
 SHOW

Tickets now at ASUC Box Office and the C.A.L. Box Office
 \$1.50 and \$2.00 Students
 \$2.75 and \$3.50 Non-Student

ONE WEEK ONLY
"ELECTRA"
 CACOYANNIS' Superb New Film Version
 plus: **"PICASSO"**
 Full-length Color Documentary

SU4 Irving at 46th Ave. San Francisco MO 4-6300

ASUC SUNDAY FILM
OSCAR WILDE
 STARRING ROBERT MORLEY
SUNDAY, FEB. 16
PAULEY BALLROOM
 8 p.m. 50¢

Fantasy Recording Star
VINCE GUARALDI
 and his trio
APPEARING TONIGHT & TOMORROW NIGHT
FRI. & SAT., FEB. 14 & 15
 AT THE
Trois Couleur
 3101 San Pablo Ave. Berkeley OL 3-1745
 MINORS WELCOME
 Live Jazz after hours on the same nights (2-4) Roy Henderson Quartet

Valuable ad
UNTIL MARCH 15
Franco's Villa Nova
 I free pizza of your choice with the purchase of one
Banquet Accomodations
 up to 150 people
Catering
 at your living group
 2775 Telegraph Ave., Oakland GL 2-1965

SPECIAL STUDENT RATE WITH ASUC CARDS

T and D
 14th & Broadway • TW. 3-5505

OPEN DAILY AT 12:15 P.M.
 Feature at 12:30—3:20—6:30—9:45

CARL FOREMAN
 Presents
 THE MUCH TALKED ABOUT STAR OF
"TOM JONES"
 ALBERT FINNEY in

THE VICTORS
 A COLUMBIA PICTURES RELEASE

VINCE EDWARDS
 GEORGE HAMILTON
 GEORGE PEPPARD
 ELI WALLACH
 ROMY SCHNEIDER
 MICHAEL CALLAN
 PETER FONDA

UNESCORTED LADIES
 MAT. SPECIAL! 12:00-3:00
 MON. THRU FRI. 50¢

Hofbrau
Chinese Food
 ORDERS TO TAKE OUT
Hours: 11:00 a.m. to Midnight

ROBBIE'S CAFETERIA
 2379 Telegraph Ave. TH 8-6475

EXCLUSIVE SHOWING
 — SPECIAL STUDENT PRICES — ALWAYS —
PARKWAY CINEMA
 Park Boulevard at East 18th
 Just minutes away from the campus
 BIGGEST THRILL OF THE YEAR
 Please See This from the Beginning!
 JEAN GABIN, ALAIN DELON
 In
"ANY NUMBER CAN WIN"
 — AND —
A CRAZY-HOUSE OF FUN! . . .

THE RANK ORGANIZATION PRESENTS
IN THE DOGHOUSE
 A ZENITH INTERNATIONAL RELEASE



**Join The Ranks
of Daily Cal
Managerial**

Room 114
Eshleman



Communist Speaks at UCSB for First Time

Dorothy Healey, first Communist to speak on the Santa Barbara campus, predicted that President Johnson's attack on poverty would be fruitless. She said probing the cause of misery is impossible in the "so-called bastion of the free world."

The chairman of the Southern California District of the Communist Party spoke on issues ranging from the ultra-right to her vision of the "ultimate Communist society."

Although Mrs. Healey spoke Feb. 3 during Santa Barbara's Dead Week, her precedent-setting talk packed the campus Campbell Hall, and drew listeners close to loudspeakers in the Student Union.

After attacking Johnson, Mrs. Healey turned on Barry Goldwater and the ultra-right.

She proclaimed, "They cannot have a positive theory, because they distort the realities of life and therefore their proposals are

as empty as their analyses."

After discussing "the myth of folksy-wolksy government at local level," Mrs. Healey turned to the integration problem.

Countering Goldwater's "change hearts first policy," she said, "We Communists join with millions of other Americans in saying: Integrate today, and let the hearts and minds of the white South get changed gradually."

Switching to the left wing, Mrs. Healey praised socialism as providing "the basis for the transition to the much later Communist society where the abundance of the economy is matched by the abundance of the new ethical and moral qualities of man."

Elaborating on her vision of a Communist world, Mrs. Healey saw "that ultimate Communist society" where "labor is no longer solely a need but an enjoyable act," and "man becomes accustomed to function without constraint of any kind; self-discipline and self-government emerge as the social consensus, and then indeed all vestiges of the State will have withered away."

Student reaction to the Communist speaker was generally favorable.

Her talk is one of a series sponsored by the Santa Barbara Associated Students. The Regents removed the 11-year-old speaker ban last June.

A small group of students protested Mrs. Healey's appearance, but Ruth Girvin of the Santa Barbara "El Gaucho" said students were "interested" in seeing the communist speak and thought inviting her was a "good idea."

Miss Girvin said that Associated Students planned to invite additional controversial speakers to the school.

Those invited include John Rousselot of the John Birch Society and Joseph Shell, former conservative candidate for the governorship. Additional communist speakers are not planned for this semester, Miss Girvin added.

Beaty, Johnson In Indoor Meet

Indoor track and field returns to the bay area with the second running of the Golden Gate Invitational tomorrow at 7:30 p.m. in the Cow Palace.

Cal's Gene Johnson again will be matched against Australia's national high jump record holder, Tony Sneazwell, who cleared seven feet in last week's Los Angeles indoor games.

Soph sprinter Forrest Beaty of California will be making his first appearance of the indoor season when he faces Herb Carper and others in the 60-yard dash.

Give a **BEAUTY** GIFT CERTIFICATE

K beauty shop 2304 ELLSWORTH at BANCROFT TH 1-4754

The Yenching Alumni Association of Bay Area presents

The Famous Peiping Pera HU Troupe in

The Jade Bracelet — Loh Yang Bridge
Red Peach Mountain — The Ribbon Dance

BERKELEY LITTLE THEATRE
Saturday evening, February 29th, 8:30 P.M.
Benefiting Dr. Leighton Stuart Scholarship Fund
Tickets on sale at Breuner Box Office—\$3.25, \$2.25
2128 Center Street 843-5589

EUROPEAN STUDY TOUR FOR COLLEGE CREDIT

48 days travel through France, Switzerland, Italy, Austria, Germany, Holland, Belgium, and England

Six units credit in S.F. State Summer Session

Instructor: Dr. Richard Marsh, Associate Professor of of Creative Arts, S.F. State

ATTEND INFORMATION MEETING TUESDAY, FEB. 18, IN STEPHENS ROOM, STUDENT UNION, 7:30 P.M.

Come East Young Man

A Message to MBA Candidates From Donald C. Cook, President American Electric Power System

Many years ago Horace Greeley advised young men to "Go West" to find new career opportunities. Today, I urge you to investigate an unusual opportunity offered to outstanding MBA candidates by the American Electric Power System to "Come East."

We offer a select group of young men the opportunity to participate in a comprehensive two-year management training program. Twelve months of this training takes place in New York City.

Included in this program are rotating assignments in accounting, finance and other functional areas. Experience is gained from top executive staff contact.

I can assure you that as a participant in this program, which is under my personal guidance, you will have every opportunity to prepare for future positions in management. Your salary will reflect the high regard we hold for men of ability.

The American Electric Power System, through its operating electric power companies, serves over 2,300 communities in a 7-state area from Michigan to Virginia. AEP is recognized as a world pace setter in the generation, transmission and distribution of electricity.

Mr. Harry Hergert (BS, U of California, MBA, Harvard Business School) of our New York office will visit your campus. As my personal representative he will be pleased to meet with you and review in more detail the various aspects of this program. Please make your appointment through your placement office.

INTERVIEWS
FRIDAY, FEBRUARY 28, 1964

Donald C. Cook



University Alumna Goes to Colombia With Peace Corps

Susan M. River, an alumna of the University's School of Nursing, left the United States Feb. 1 to begin a two-year assignment as a Peace Corps volunteer in Colombia.

She is one of over 500 volunteers now serving in rural and

urban community action programs in Colombia.

Miss River is participating in the Colombian government's National Rural Health Program which calls for the construction and/or equipping of 90 small hospitals and health centers throughout the country.

Peace Corps Exam

A Peace Corps placement test will be given on campus February 22. Questionnaires may be obtained from the ASUC Peace Corps Committee, 104 Eshleman Hall.

**BEAT
STANFORD
OPEN
HOUSE**

FREE BEER

3-5:30 p.m.
Today

THETA CHI
2499 Piedmont

Dr. E. E. Vanderlaan will speak on Sunday, Feb. 16 at 3:00 p.m. in the Sproul Room at International House on

"SOME ASPECTS OF THE GOD IDEA"

A scientific, humanist approach

ALL STUDENTS WELCOME
Humanist Society of Berkeley

ASUC to Show 'Oscar Wilde'

"Oscar Wilde," starring Robert Morley as Wilde, will be this Sunday's ASUC movie. It will be shown at 8 p.m. in Pauley Ballroom. Admission is 25 cents.

I-House Dance Free for Girls

A St. Valentine's dance will be held from 9 p.m. to 1 a.m. tomorrow at International House. Music

will be provided by the Murray Peterson Orchestra.

Admission is 50 cents for all non-resident men and \$1.25 for non-members. Dates are optional and all women will be admitted free.

First Annual
**MOONLIGHT
BOAT RIDE & DANCE**

sponsored by the Brick Muller Society
exclusively for U. C. Students!

Space limited . . . (to give you more room!)

Three exciting hours of . . . dancing (to the music of Walt Tolleson) . . . fun . . . entertainment . . . and refreshments . . . in the most ROMANTIC of settings . . . the glamorous waters of the Bay!

Welcome aboard at Jack London Square . . . at 8:30 p.m. . . . sailing at 9:00 p.m. Returning at midnite, Saturday, March 14, 1964.

Tickets at the ASUC box office

3.65 each

DON'T MISS YOUR BOAT!!!!

GRODINS RAMS HEAD

... California's finest university shops for men



GREY OLIVE

adds new personality to your traditional worsted suit

\$59 only \$5 a month

Quiet quality . . . grey olive . . . new mellow blend of two traditional shades. Our Rams Head suit of pure m'lage-producing worsted has the right look at the right price. Also in barkbrown and oxford grey.

For completeness of selection Grodins offers many varieties of Rams Head traditional suits from \$49.90 to \$125.

GRODINS

OPEN THURSDAYS 'TIL 9 P.M.

WHERE GOOD TASTE ISN'T EXPENSIVE

2330 TELEGRAPH AVENUE

Redirection and Quality

The University's hope of using voluntary methods to redirect students to a less crowded campus has apparently failed—to nobody's surprise.

Only five per cent of the applicants who have responded are willing to consider another University campus when the Berkeley campus surpasses its maximum enrollment of 27,500 students this fall.

The voluntary method was only a stall for time, while the administration and the Academic Senate worked out criteria for mandatory redirection. The most the University could have hoped for was that enough students would willingly choose another campus this fall.

The University faces the problem that while long range plans are being made for nine campuses, most of which will eventually reach Berkeley's population, many people still equate the University with its Berkeley campus. The University is now attempting to acquaint potential students with the programs and advantages of the other campuses, in hopes that students will find another campus equally appealing.

The criteria used to redirect students when mandatory diversion becomes necessary is of vital importance to all campuses because of its effect on the quality of students.

As it stands now, regardless of the attempts to portray the University as one institution with many equal branches, Berkeley is attracting the top students.

The Berkeley Academic Senate has proposed that redirection be based mostly on academic criteria; the top students would get their choice of campus. This method would insure that Berkeley maintains its top ranking status in the University system.

Although the other campuses, other than UCLA which will reach its maximum population in four years, will not face the problem of having to turn away students for many years, the criteria Berkeley uses to choose its students will have long range effects on the quality of the other campuses.

As long as Berkeley continues to get the cream of the crop, the other campuses will not be able to attain hoped-for status. They may never attract enough students to face a redirection problem.

However, academic standards are the only criteria that can be applied if the University as a whole is to maintain its quality. The top students, if rejected from Berkeley, are not likely to choose another campus; if they can afford it, they will go to good private universities.

A superior university cannot select its students by lot, home town location, first-come first-served, or parents' campus affiliation.—PAT MAR

Classrooms

At this time every semester students begin to feel the University was patterned after Dante Algeheri's "Inferno," with graduation at the center and the Devil handing out the diplomas. The classes everyone wants to take are impossibly overcrowded, or scheduled at impossible hours.

The usual procedure in such cases is for the professor to eliminate the lower division students and non-majors from the class, or find a larger classroom, or both. Courses which, by the nature of their subject matter, have restricted enrollment often produce the worst results for the student: by restricting a course to majors in the field the professor is simultaneously contributing to a trend towards specialization—restricting the breadth of modern education.

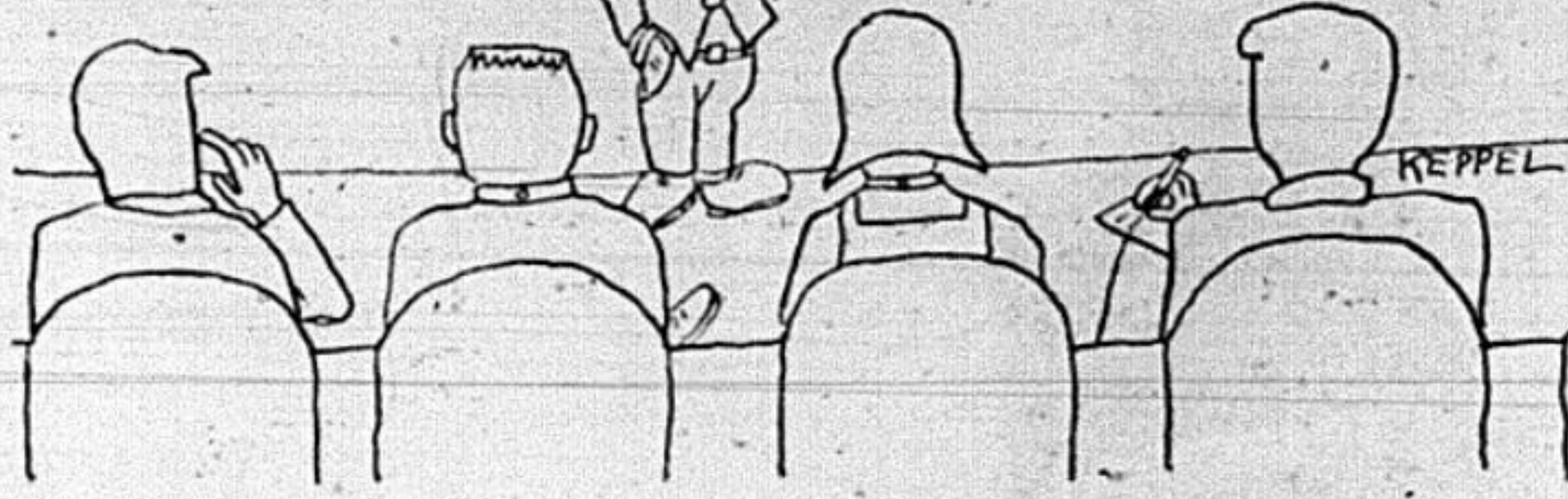
At least one professor—Jacobus ten Broek—found a partial solution to the dilemma.

When confronted with at least twice as many students as his Political Science 157B classroom could hold, he first tried to find a larger room. There was no larger room available for his class time.

Instead of restricting the class in the usual manner, ten Broek chose to saddle himself and his teaching assistants with two sections of the course—doubling their work load.

Even so, this is only a partial solution to the problem. The department was unable to provide any additional funds for teaching assistants. No professor, no matter how devoted he is to his subject or his students, can teach two sections of a course as well as he could teach one. The real solution is a healthy injection of money, and personnel.

—ALEX STEVENS



"YESTERDAY YOU WERE INFORMED THIS WAS NOT A MICKEY MOUSE COURSE!"

LETTERS to the ICE BOX

To the Ice Box:

As a former resident of both a women's co-op and a "small approved boarding house," I do not find it hard to say that there is certainly more opportunity for expression of individual living patterns and less pressure for conformity at the co-ops.

Yet this is due not to the co-op and boarding house regulations but only to some of the girls living in these two types of houses.

This difference is just not enough to achieve the glorious visions of non-conformity (their word, not mine) painted by the USCA director of public relations.

The social pressures from other co-op members are practically non-existent. Yet this noticeable absence of an informal drive to spread social norms seems futile and hollow when it is forced to exist in a framework practically as moralistic, self-righteously puritan, and regimented as that of the dormitories which have lately been the subject of so much criticism.

Spending five hours a week with her hands in vegetable barrels and living in a rugless, curtainless, "instant proletarian" cubby-hole does not give a women's co-op resident an automatic passport to freedom from conformity. She can never have this freedom while she must adhere to the archaic WDA lockout rules and house dinner customs which are enforced in at least some of the girls' co-ops.

If the new, utopian, Ridge project continues to impose on its girl residents served meals which must be begun and ended at exactly the same time as the house-mother begins and ends them, this project with its glorious ideals of freedom and non-conformity will be no more than a hypocritical sham.

By no means am I being so radical as to suggest the absence of a housemother; her presence is a requirement of the Associated Women Students. But there is no requirement that says an artificial and undesired formality must be imposed upon the house meals in deference to conventions mostly not believed in by the girls or in deference to a woman who does not even know most of their names.

Girls with late classes are forced to take late dinners when everyone is finished, regardless of how much studying they may have to do in the evening. Girls who happen to stay late on campus for a previously unannounced lecture or discussion (supposedly encouraged by the glorious co-op spirit) probably get no dinner at all. Serving dinner, as the boys' co-ops easily do, continuously from 5:30 to 6:15, is unheard of in this so-called female haven of non-conformity.

Likewise, I am not suggesting, as much as I would like to do so, a campus-wide abolition of lockout. It should exist for the girls and their parents who feel it is necessary. But not all girls or their parents do.

The University Students' Co-operative Association operates the only mass low-cost housing available to Berkeley students. They operate one unapproved men's co-op, Oxford Hall, and have in

no way been discredited for it. Yet why is an "unapproved" girls' co-op not even considered?

The USCA cannot be consistent with its claim of providing an opportunity for lack of conventionality unless it provides some housing for women which is free of lockout, though not necessarily signout, regulations.

Most of the girls in the co-op in which I lived, unlike the happy Hoyt girl quoted in last Monday's Daily Californian, readily acknowledged that they would probably come in earlier without lockout restrictions. In the few cases when then were unable to come in by lockout time, they would not be forced to sign out overnight. Yet they were a camp divided on the matter of enforcing lockout.

Girls, including our judicial committee chairman, who tried to be as rational as one can be about lockout and refused to "campus" someone for being 30 second late, were put under such pressure by more puritan, rule-happy girls that they either became tools of the overly strict system or resigned from judicial committee. A girl who tries to avoid placing informal social pressures on her fellow residents is forced to apply the pressures of petty and disproportionately limiting restrictions.

The co-ops can achieve their "utopia," even with the leaking roofs, not so luxurious rooms, and sometimes with profuse apologies to Mr. Andre Castro) monotonous food of which Mr. Bear complained in his letter of February 11. But many girl students who want to partake of any genuine lack of pressure for conformity are completely unable to do so because of the hypocrisy produced by regulations and limiting traditions completely incompatible with the "co-op philosophy."

Judith Baston
Junior, Journalism

Straw Hat Band

To the Ice Box:

One group on this campus which gains recognition and deserves all of the praise it receives is our Straw Hat Band. These fine spirited members of the band work long and hard to represent our University in the finest way possible, and they certainly succeed.

During semester break I had the opportunity to follow the Bears up to their series with the University of Oregon Ducks. Every Oregon paper I read concerning the game included more than just a mention of "the world-famous Straw Hat Band."

Once the band arrived in the Duck's gym they never let their presence be forgotten. There were only a handful of Cal rooters present, but the Straw Hat Band succeeded in making a fine show of California spirit.

Nearly everyone on this campus has seen the Straw Hat Band in action. And nearly everyone who has seen them holds them in very high esteem and considers them the core and pride of California spirit. I, for one, wish to express my pride in this fine group of California students, and I take my hat off to the Straw Hat Band.

—Art Shartsis
Freshman Class President

Julliard Plays Beethoven's String Works

BY PAUL HERTELENDY

Whoever would have predicted last fall that the most sought after ticket of the year here would be for an evening of string quartets would have been politely ridiculed.

Yet such a campus is Berkeley, where a Beethoven cycle given by New York's heralded Julliard quartet has been sold out four weeks in advance. The first of five programs in this titanic effort featuring the complete Beethoven string quartets was launched Wednesday night in Hertz Hall before some 900 chamber music enthusiasts.

Choosing one piece each from the early, middle, and late periods, the group unveiled three contrasting styles of the greatest quartet composer of them all while showing off a tightly welded ensemble structure rarely heard in the chamber music world.

Each quarter poses its own charm in addition to a fecundity of musical ideas. The early rather Mozartian Opus 18, No. 1 prompted Beethoven to write to Amenda, "I have finally learned how to write quartets." It does contain a romantic adagio that was well ahead of its time, inspired, according to Beethoven, by the tomb scene in Shakespeare's "Romeo and Juliet."

The more romantic middle quartet, Opus 59, No. 2, includes a chorale-like slow movement, a driving fugue in the presto, and a Russian folk theme woven into the allegretto to please the Count Rasoumovsky, who commissioned the work.

The dissonant Opus 132 was one about which Tchaikowsky wrote, "A chaos of impenetrable fog." Despite the fact a very ordinary folk march and a country waltz form the melodic skeleton of two of the movements, Beethoven created of it what is today generally considered a work of genius.

The third movement, called a prayer of thanks on his recovery from illness, projects not only a reverently religious testament but also foreshadows Debussy's impressionism of seventy years later.

The tremendous wealth of harmonic and contrapuntal ideas in the works were magnificently exposed by the Julliard in a most striking display of balance and unity of expression. Undaunted by several lapses in intonation, they presented such a unified interpretation of subtle tempi and dynamics one would swear they had played these pieces together continually for the seventeen years since their group was formed.

Like the better-known Budapest String Quartet, this animated group emphasizes Beethoven's dramatics over his lyricism. Viennese quartets tend to do just the reverse.

The Daily Californian welcomes letters from any member of the University community on any pertinent subject. Letters will be printed subject to the availability of space and the timeliness of the topic. We cannot guarantee publication of any letter.

To be acceptable letters must be typed, double-spaced, and signed with the writer's name and telephone number. No anonymous letters will be accepted.

Letters under 150 words in length will have a better chance of publication than long letters.

Authors of letters should bring them to the Daily Californian Editorial office, 12 Eshleman Hall, with proof of identity.



BESLEY'S ICARUS

Chosen for the Paris Modern Art Museum

Student Honored by France For Aluminum Sculpture

An abstract cast aluminum sculpture by Bruce Beasley, a recent University graduate, will be placed in the French national collection of contemporary art in Paris.

The selection was made by Andre Malreaux, the French Minister of Cultural Affairs. The French government purchased the sculpture and will exhibit it permanently in the Paris Museum of Modern Art. Very few works in the Paris Museum come from this country.

The sculpture "Icarus" consists basically of two slender curved elements flowing out of a central core, from which also radiate several smaller projections. Malreaux termed it "a linear construction embracing but not filling the space which it dominates."

Beasley was one of the University artists who helped pioneer techniques of metal casting used by the artists themselves.

The sculptors first explored the new images they could create as their own foundrymen in a Berkeley waterfront factory building four years ago.

The 24-year-old artist is also represented in permanent collections at the New York Museum of Mod-

ern Art, the Guggenheim Museum, and the Los Angeles County Museum.

Beasley will replace "Icarus" with another of his works for the Biennale group on display from Saturday through March 25 at the University Art Gallery. The exhibition is entitled "Onze Sculpteurs Americains."

COMPUTER

A new IBM 1620 digital computer with a memory capacity of 20,000 decimal digits has been added to the school of engineering facilities at Santa Barbara.

ATTENTION

If you have an IBM card for DRAMATIC ART 40B that you plan not to use please contact

Bolette Butler
2231 Shattuck

841-7406 845-9101

REWARD

Customs Halts Art Exhibit

The customs office didn't care how many prizes the sculptures won, they weren't going to let the art department's exhibit through until they were darned ready.

After winning two major prizes at the Paris Biennale, including the Prix de la Ville de Paris, the 13 sculptures sat in a customs shed for two weeks while the mystified committee for arts and lectures office tried to plan today's opening of the exhibit at the Art Gallery.

Suddenly customs demanded the sculptures be removed by 10 a.m. Immediately CAL rented a truck and somehow managed to transport the exhibit to the campus.

The exhibit "Onze Sculpteurs Americains" opens tonight at the Art Gallery and will run through March 25.

P.E. Course Enrollment

Enrollment hours for physical education 12 and 26 will be from 8:45 a.m. to 4:30 p.m. today near the West entrance of Hearst Gymnasium.

The enrollment time for next week will be from 9 p.m. to noon.

CITRUS MANURE

Citrus growers are wasting both time—and money in many cases—by applying manure on the surface of orchard soil according to Riverside scientists.

STAN ANDERSON'S SHELL SERVICE



Foreign & Sports Service
1752 Shattuck at Francisco

Patronize Our Advertisers

ANNUAL SALE

Guitars, Banjos, Mandolins, Harmonicas, Pix Cases, Strings, Parts & Books.

NEW LPS (MONO OR STEREO)

Reg. 3.98 - 5.98

2 DAYS ONLY!! \$2.54 EACH!!

Ask about old 78s

CAMPUS MUSIC SHOP

2506 Haste (at Telegraph) behind Lucky's

TH 1-5872

Daily 1-6

Sat. 10-6

NEW CAREER FRONTIER

In Israel

FELLOWSHIPS

For Graduates in Industrial Engineering and Business Administration

Are you receiving your Bachelor or Masters Degree in Industrial Engineering or Business Administration in 1964? If so...

This fellowship program offers you on-the-job experience in diversified industrial problems, valuable experience in foreign markets, and the adventure of working in a dynamic, progressive country.

While employed, special arrangements are made for you to pursue post graduate studies leading to a MSc or Dsc degree at the Technion—Institute of Technology—Haifa.

LOCAL INTERVIEWS WILL BE CONDUCTED BY ISRAELI representative in the near future. To arrange an appointment in your school,

Rush resume to:

Mrs. M. Kabat, Exec. Secty. Fellowship Program

COMOI

515 Park Ave., New York 22, N.Y.
212, PL 2-0600

Police Here to License Bikes

University police announced that an officer of the Berkeley Police Department will be on campus Tuesday, Wednesday and Thursday to license student bicycles.

Berkeley City ordinance requires licenses for all bicycles operated on city streets. Licenses are issued for the full calendar year and cost 50 cents.

On-campus registration will take place from 8:30 a.m. to 4:30 p.m. in the foyer of the cafeteria. Bicycles may be wheeled into the foyer via the north doors opposite Strawberry Creek.

(Advertisement)

Qualified candidates are needed for a variety of management positions in colleges and universities. Opportunities are available to ambitious and mobile people with at least three years experience at the Assistant Director level.

Write
CUPA PLACEMENT SERVICE,
1942 Broadway
Boulder, Colorado

Sponsored by the 540 member institutions of the College and University Personnel Association.



FOR THE MANY LIVES YOU LEAD..

Make your mark with fashions from London, Paris, Rome... designed for the "in" group by L.L.L.L. Sizes 5-15, Gingham Double Jumper (#5201) of Arnel* and cotton twill in Raspberry, Sail Blue, and Tangerine... about \$15.00. Tab Double Jumper (#5215) in cotton denim, Charcoal, Banana, Denim Blue... about \$18.00. Prices slightly higher on the West Coast.

Jr. Sportswear Dept.

MACY'S CALIFORNIA

Oski Dolls Hold Tryouts Soon

Tryouts for Oski Doll membership, the University's official student hostesses, will be held after the Thursday application deadline.

Tryout applications will be available at an Oski Doll booth

today at the Activities Fair, or in 410 Student Union.

Forty-two new hostesses will be selected through interviews by a panel of University officials and students. Co-eds of undergraduate standing are eligible.

**What is
extremely
intelligent ...**

has 162 arms ...

**and flies
North
and South?**

A group of 80 college students on a PSA super Electra Jet. And why so smart? Because they chose PSA, the airline with the MOST! Most flights—245 a week—even more for holidays. Only 13.50 San Francisco - Los Angeles, 19.85 San Diego - San Francisco, 6.35 Los Angeles - San Diego. And fast—only 60 minutes between San Francisco & Los Angeles! Call PSA at 761-0818 in San Francisco, 776-0125 in Los Angeles, 298-4611 in San Diego.

In case you wondered, one of them was carrying a chair.

CAMPUS CALENDAR

TODAY Seminars

Professor E. T. Degens, Division of Geological Sciences, California Institute of Technology, will speak on "Genetic Relationships Between the Organic Matter in Meteorites and Sediments," at 3:10 p.m. in 141 Earth Sciences Building.

Nels Nelsson, head of the Learning Machine Group, Stan-

ford Research Institute will speak on "Learning Machines" at 11 a.m. in 421 Cory Hall.

Irving B. Fritz, department of physiology, University of Michigan, Ann Arbor, Michigan, will speak on "The Role of Carnitine in Fatty Acid Metabolism" at 4 p.m. in 102 Biochemistry and Virus Laboratory.

Curt Stern, professor, department of zoology, will speak on

TRAVEL MEDITERRANEAN LANDS SUMMER OF 1964

See where Western Civilization began.

Tour Directed by Professor Warren E. Tomlinson,
World Traveler, Lecturer and
Experienced Tour Conductor

Leave New York June 26;
Return July 26 or August 26

Sponsored by The University of Puget Sound
Six semester hours upper level Academic Credit if desired.

Write for descriptive folder to

Gerard Banks, Bursar

University of Puget Sound
Tacoma, Washington 98416
(Skyline 9-3521)

"Richard Goldschmidt, Biologist (1878-1958)" at 4:15 p.m. in 2503 Life Sciences Building.

Lectures

Morton Deutsch, professor of psychology and education, Teachers College, Columbia University, will speak on "A Psychological Approach to International Conflict" at 8 p.m. in Wheeler Auditorium.

Thomas C. Schelling, professor of economics and member of the Center for International Affairs, Harvard University, will speak on "Arms Management on an Irsecure World" at 8:45 in Wheeler Auditorium.

Concert

Marie-Claire Alain, organist, will perform works by Couperin, Pasquini, Bextehude, Bach and Franck at 8:30 p.m. in Hertz Hall.

TOMORROW

Concert

The Juilliard String Quartet will perform the second concert in the Beethoven Quartet cycle at 8:30 in Hertz Hall. The program includes Quartet in G Major, Op. 18, No. 2; Quartet in F Major, Op. 59, No. 1; and Quartet in C-sharp Minor, Op. 131.

SUNDAY

Concert

University Repertory Chorus, directed by Edward Lawton, will perform "The Passion According to St. Matthew" at 8:30 p.m. in Hertz Hall.

Drama

Le Treteau de Paris production of Jean Aouilh's "L'Alouette" will take place at 2:20 and 8:30 p.m. in Wheeler Auditorium.

Course Changes

Agriculture Economics 112B: Will meet in 363 Dw.

Agriculture 5: Will meet in 107 California

Business Administration 298: Will meet in 2007 LSB W 3-5.

Business Administration 133, Section 1: Will meet in 219 Dw.

Chemical Engineering 260, Section 2: Will meet in 220 Gilman.

Electrical Engineering 117A, Section 1: Will meet in 142Dw.

Engineering 10, Section 1: Will meet in 310 HM.

French 115B: Will meet in 188 Dw.

Geography 140: Will meet in 2320 Tolman.

Italian 3, Section 7: Will meet in 127 Dw MWF 1 and 109 Dw TuTh 1.

Mechanical Engineering 102, Section 3: Will meet in 210 Eng.

Music 110, Section 1: Will meet in 123 Morrison.

Physics 141B: Will meet in 2301 Tolman.

Political Science 1: Make-up exam 3-6 p.m. Feb. 20, 208 Eng.

Political Science 258B: cancelled.

Psychology 143: Will meet in 120 Latimer.

Public Health 217: Will meet in 522 Warren.

Scandinavian 206: Will meet in 363 Dw.

Social Welfare 100: Will meet in 340 Haviland.

Sociology 101: Will meet in 123 W.

Sociology 242: Will meet in 343 Dw F 1-3.

Photographer

Male Pt. Time

Functions: Weekend, eves.; need car, camera and strobe.

\$4-6 hr.

Also need 2 men part time \$1.50-\$2 per hr. Inside sales work M-Th evenings.

Apply in person

CLAREMONT HOTEL
1-5 P.M. Sunday



NO!

DON'T BOTHER TO CARRY AN EXTRA SUPPLY.

New Carefree® tampons promise so much more protection—you can leave the extras at home!

The principle of this superior protection is simple, natural. Most old-style tampons flatten, thin out, elongate when moisture strikes. This shape simply cannot cover the area of flow properly. Thus embarrassing accidents occur.

But a Carefree tampon (firmly compressed so it needs no rigid applicator) expands into a natural, round shape that conforms to your own body's structure, responds to your own body's needs. It gives you more comfort than any tampon or napkin ever developed.

Actual use tests proved that the new Carefree tampon absorbs, without leakage, 73% more than the leading tampon—starts to absorb more quickly than any other.

Better protection—longer protection. That's why you can leave that extra supply at home.

Because Carefree is far more absorbent, there is no need for a Carefree super size. If you are using tampons for the first time, you may wish to try Carefree Slim (the smaller size).

Carefree

© PHARMEDICA LABORATORIES, MENLO PARK, N. J.

The newspaper fully supports University policy on housing. Therefore, classified advertising relating to housing is only available to those who do not discriminate on the basis of race, color, religion, national origin or ancestry.

Apartments

TYPED OF SHARING AN APARTMENT DO YOU WANT TO LIVE ALONE? New furnished—1 Bedroom Apartment Next to U.C. Campus Reasonable prices

NEW 2-BED. FURNISHED APT'S. Electric kitchen, desks, garage, W/W carpets, pool, sundeck, modern furniture. TH 3-0164.

PREVIEW Now Leasing 2606 BENVENUE

One bedroom apts. from \$125. Two bedroom two baths from \$200. • dishwashers • disposals • stoves • refrigerators • patios • sundecks • covered garage • wall to wall carpets • drapes • elevator.

2 BED. FURNISHED \$150. Parking. Quiet. Available now. 2119 Carleton Apt. D 1/2 mi. from campus. Call 849-2470.

2124 PARKER: 2 bedr. 2 bath apartment. Accommodates 4. Excellent soundproofing. Top furniture, carpeting, draperies. Large pool; dishwasher; storage; garage. Close campus, East of Shattuck location. \$55 each (\$220 for four). 526-5998.

DUPLEX. NEW 2 bed. electric kitchen, fenced yard, \$115. 234-8330 after 6 all day Sat. Sunday. 2-14-S

TWO BEDROOM APARTMENT to sublease. Near campus. \$200 or deal. Call TH 5-9505 for Barbara Query. 2-17-Q

TWO BEDROOM APARTMENT, room for three, close to campus. 1736 Dwight Way. Call 843-7755. 2-17-K

BISHOP PARKER APARTMENTS, 2 bed, 2 bath, pool, dishwasher, disposal, furnished, 2124 Parker, apt. 102. TH 1-3614. 2-24-N

JUNE 15 THRU Aug. 2-3 persons, large rooms, brand new kitchen. \$140 month. 845-5458 after 6. 2-25-J

A TASTEFULLY FURNISHED and decorated two bedroom apartment. Elegant Victorian building. \$125. 845-1421, 843-8573, 848-7929. 3-11-S

A FRIENDLY STUDIO with small bay view. Pleasant furnishings. Campus. \$80, includes all utilities. 845-1421. 3-11-D

STUDIO APT. to sublease (4 months or more) furn. (2 beds) 2 blocks from W-camp. \$95. See Clement, 1912 Addison, Apt. 16. Evenings. 2-14-C

ONE GIRL to share deluxe modern apt. All furn. heated, pool, \$55. 2124 Parker #208. TH 8-8158. 2-20-W

HOMELESS? TWO GIRLS want one to share spacious, pleasant, modern, 2-bedroom apt. Close campus. \$58. 843-8202 after 5. 2-14-G

LARGE, MODERN 2 bedroom apartment to sublet. Close campus. Shopping, bus, etc. Parking available. \$175. 843-8202 after 5. 2-14-G

MANAGER FOR APT. building, 2-4. Male grad. student. TH 3-0164. 3-4-D

Homes For Sale

SOUTH ORINDA 3 bedroom 2 bath, good condition. Easy terms. 89 Hillcrest. 15 minutes from campus. 845-8923 days. CL 4-3978 after 8 p.m. 3-10-V

Houses to Share

THREE GIRLS NEED one to share eight room furnished house at 2311 Hearst. 2-14-B

MEN: HUGE QUIET five bedroom house. Share with three others. 1810 Virginia. Rent: \$42 each with six. Call Hamanjan TH 3-6551. 2-18-M

Rooms

SINGLES AND DOUBLES. Kitchen. 2208 Roosevelt. 2-19-R

SINGLE FURNISHED ROOM near U.C., Bay view, private washstand. Male teacher or graduate student, non-smoker. Inquire Euclid Book Store, 1879 Euclid, TH 8-7952. Residence TH 8-0573. 3-6-Mc

AMPLE ROOMS FOR men. Kitchen privileges, board near by if desired. 2 blocks south U.C. 2401 Bowditch. TH 3-2461, TH 1-4686, TH 5-4832. 3-9-L

MODERN FURNISHED ROOM, bath, large living room, TV, phone, refrigerator. 10 min. campus. \$50. TH 8-4489. 2-17-V

LARGE SINGLE ROOM for male. Linen, shared kitchen, bath, \$40. 2502 Telegraph. 843-7698. 2-14-M

ATTRACTIVE ROOM, CHOICE location in quiet private home for graduate student or teacher. 524-5815. 2-25-P

2 BLOCKS NORTH campus. Man, share modern sunny redecorated. Maid, kitchen, work possible. 2699 Le Conte. TH 8-1845. 2-25-M

MALE TO SHARE double, Northside apartment. Block to campus. \$35 month. Call 848-3626 after 5. 2-14-J

MEN'S ROOMS SINGLE or double, share kitchen and bath facilities. Visit, 2729 Fulton St. mornings. 2-19-G

DOUBLE AND SINGLE rooms for rent for men. Call TH 5-9195. 2-18-A

CLAREMONT AREA. PRIVATE bath and separate entrance. \$50 per month. 845-0833. 2-20-A

House For Rent

FURNISHED 4 BED.; close campus; study; children/pets welcome; fenced; washer/dryer; fireplace. TH 3-3803 from 3-9:00. 2-17-S

Apparel

NICE USED CLOTHING. We buy and sell, wool Capri pants \$1.98, car coats 98c to \$3.98, formal like new, sweaters for the family, men's sportcoats \$2.98, ladies wool skirts \$1.98, children's clothing. 11732 San Pablo, El Cerrito. Garment Exchange. BE 4-0341. R-2-19-G

Typing

EXPERT TYPING. PAPERS, theses, dissertations. Reasonable rates. Grace O'Connell, 780 Vincente. LA 6-3043. R-2-21-0

FOR BEAUTIFUL ACCURATE professional typing—math, sciences, languages, arts—dissertations, manuscripts. Carole Smith, LA 4-8105. R-2-11-5

TYPING: EXPERIENCED, FAST. 35c/page. Paper and delivery. Rush jobs accepted. Call Warner, 526-9732. R-3-J

TERM PAPERS, THESES, manuscripts. TH 3-2289, evenings and weekends. R-2-26-R

TYPING (ELECTRIC), PROMPT service. Theses, term papers, manuscripts. Mrs. Corso LA 6-0333. R-2-26-C

TYPING TERM PAPERS, theses, dissertations. Experienced. Near campus. No delay. 849-1508. R-3-9-T

NEED EXPERIENCED TYPIST? Theses, term papers done accurately, inexpensively, on electric machine. LA 5-3331, Mrs. Breazeale. R-2-20-B

TYPING—ALL TYPES. Convenient Berkeley location. 843-3175. 2-25-R

EXPERT TYPING, BERKELEY. Reasonable rates. Call before 8:30 p.m. Mrs. Panerio 843-5278, Mrs. Severy 843-6672. 3-3-P

CAMPUS TYPING SERVICE

2521 Durant Avenue Theses our specialty. Also manuscripts, briefs, ditto masters, duplicating. Prompt, accurate, dictating machine—you dictate, we transcribe. Editing. TH 5-8980. Mrs. Perrin. R-3-5-P

TERM PAPERS AND THESES. 1939 Stuart. TH 8-1778. R-3-9-R

FOR ACCURATE TYPING on electric Pica-term papers, theses, manuscripts. Call Mrs. McCroskey. LA 6-6159. 2-26-Mc

FYBATE PRINTING SERVICE

2440 Bancroft — TH 3-8080 Typing — Mimeographing — Printing Photocopying — Layout — Editing — Binding IBM electric "Executive" and elite Offset press — Mimeograph R-2-28-F

PERSONALS

UNWANTED HAIR MARS your beauty. Permanent, gentle. Ruth Sayers, Registered Electrologist. 845-1917. 3-2-S

TROUBLE ON YOUR dates? Read "How to Succeed with Modern Women." Send \$1 cash to P. O. Box 355, Berkeley, Calif. 2-17-G

JERRY M., I love you madly but won't speak until you find my pet Pelican. If I don't have him by Feb. 26, goodbye forever. Lucy. 2-17-P

KARATE PARTNER WANTED to practice drill and sparring. Send postcard to Kent Redelings, 2500 Webster. 2-20-R

Travel

JET TO EUROPE JET TO JAPAN \$426 \$555 S.F.—London June 20 S.F.—Tokyo July 10 London-S.F. Sept 6 Tokyo-S.F. Aug. 12

FLIGHTS OPEN TO STUDENTS, FACULTY, STAFF AND IMMEDIATE FAMILY.

Call 849-2607 or 841-9793 (7:00 to 9:00 p.m.) 2-17-W

Help Wanted

CALIFORNIA ENGINEER URGENTLY needs salesgirls. Earn \$20/month for 2 hours a week work. See Ozzie, room 109, Eshleman or call TH 8-4800 ext. 3960. 2-18-C

ROOM AND BOARD in exchange for babysitting. 2351 Virginia St. TH 9-0427. 2-14-Z

WANTED: BABYSITTER Mon. Wed. Fri. 8:30 to 12:30 in my home. 2309 Grant, TH 1-0615. 2-18-G

BUS. AD OR Journalism student to sell East Bay Advertising for San Francisco business newspaper on commission basis. Contact Miss Clark, Student Placement Center. 2-18-D

UNIVERSITY COUPLE for light apartment building management. Prefer eagerness to experience. Reply Box M, 101 Eshleman. 2-19-K

SAFEMAN CALLING ON Auto repairing and other metal working workshop to sell hand saw, band saw blades. 25% commission. Phone 527-0308 evenings. 2-19-M

GIRLS • GIRLS • PHONE solicitors part time, we train, salary plus bonus. Apply, 9-5 daily. 2108 Shattuck, Suite 124. 2-19-H

MEN BUSINESS MAJORS Juniors Seniors work 15 hours week. \$125 month. Career opportunity after graduation. Send resume and picture to Mr. McGraw, 3645 Grand Suite 102 Oakland, California. 2-19-Mc

LIVE IN POSITION for experienced girl. Prepare breakfast at 7:30 a.m. Assist children 5-7 p.m. Babysit 3 nights week. Must be neat and good student. Offer full time help employed. Call 843-3829 after 4 p.m. 2-19-J

COACHING IN EE-100, ME-110 and other senior ME courses. Phone 841-8108. 2-17-B

Auto Insurance

AUTO, FIRE, SCOOTER, MOTORCYCLE. All your insurance needs in one convenient stop. 1688 Shattuck. 841-2833. R-2-19-T

ALL DRIVERS—LOWEST possible rates, single/married. Ask for Peter Siewert. Days TE-4-7100. Evenings DL 5-0377. R-2-11-S

NON-DRINKERS ONLY. GET the best for less. Preferred Risk Mutual Insurance Co. TH 3-4711. Open evenings. 3-4-N

GOOD DRIVERS, PHONE me for rates. Save money on auto insurance. Also scooters \$20 each 6 months. Motorcycles \$28 each 6 months. PL-PD. Farmers Insurance Group, 1887 Solano "near Oaks Theatre." 527-2141. R-3-11-C

Miscellaneous Services

SHOESHINE? DON'T go off campus—see Jim in the Student Center, between the Bowling Alley and the Barbershop. 12-13

ALTERATIONS BY EXPERIENCED dressmaker. Ladies' apparel. Convenient North campus location. Reasonable rates. Phone 849-0371. 3-2-S

AUTO DRIVING INSTRUCTION. Private lessons. Patient, professional instructors. Dual controls. Daytime, evenings, Saturdays. Convenient pickup service. Berkeley Driving School. LA 4-5321. R-3-2-B

HAIRCUTS BY APPOINTMENT. TITO MORENO. Formerly of Sather Gate Barbers. Now in the ASUC Barbershop. Student Union. Tel. 845-9024. 12-13-M

UNDESSMAKING, ALTERATIONS, REPAIRS. Original designs in casual and evening wear. Prices reasonable. Call TE 6-2199. R-2-8-B

CLASSICAL GUITAR INSTRUCTION, James Baron. Concert technique. Beginning and advanced. Home 527-2270, message service 845-5224. 3-10-B

CLASSIC GUITAR

SCHOOL OF TARREGA-SEGOVIA. Beginners, intermediate, advanced. Gerard Schoon — 845-5224 3-4-S

FASTIDIOUS WOMEN HAVE unwanted hair removed. Jeanne McGettrick, R.E., Room 302, 2140 Shattuck, Phone 849-2072. R-3-2-Mc

IRONING NICELY DONE in my home. South Berkeley. References. TH 8-1264. 2-19-Z

TELEVISION RENTED \$10 a month with option to buy. Otis TV, 1796 Shattuck Ave. 848-5593. 3-9-0

PIANO LESSONS, MASTERS in Boston. Experience in performing and teaching. Janet Jamison. 841-3506. 2-19-J

GRAPHS, CHARTS, ILLUSTRATIONS for manuscripts, theses, term papers etc. Call 527-1726. 2-27-G

Apartment to Share

FEMALE ANTHRO SENIOR transfer wants roommate grad, similar-age 23, or working. Very liveable, fully equipped home. Sundeck, 3 Bridge view, fireplace. Private entrance bathroom bedroom. Block above Euclid Rose garden. Easy transport. Many benefits. Approx. \$80, utilities included. LA 5-3235 Laura. 2-19-M

WORKING GIRL 27 needs same to share apt. \$50 plus utilities. Call 848-6423 after 5. 2-19-M

MALE SENIOR OR Grad., share furn. apt. with 2 others. Own room. 841-1306. 2525 Durant. \$55. 2-14-C

MALE ROOMMATE WANTED. Share 2 bed, flat w/3 others. \$140 includes utilities. 2736 Haste. Cutler 849-2470. 2-14-C

FEMALE TO SHARE with two others own room 3 blocks campus. \$50. Fireplace. 845-3409. 2-14-P

WANTED: QUIET, RESPONSIBLE male student to share 2 bedr. 2 bath apartment with same. Fully furnished, large swimming pool, garage. 526-5998. 3-6-D

WANTED: GIRL to share modern apartment with three others. All electric kitchen, balcony. \$43.75. 841-7059. 2-14-N

WANTED: 1-3 MEN, W/W carpeting, furnished, pool, electric kitchen, modern. \$55 & utilities. 2124 Parker #202. 2-14-S

WANTED: 1 FEMALE roommate. Dishwasher, pool, balcony, close campus. 2124 Parker, apt. 302. TH 9-2428. 2-17-B

MAN SHARE HEATED pool, furnished (modern), free parking, kitchen utensils, coin washer, dryer, approx \$60 month. 5248 Claremont #36, TH 8-6163, 3-5:00; otherwise 658-7371. John Johnson. 2-17-J

NOW: 4-ROOM furnished apt. Modern. Girl over 21. FM-TV. \$43. Fulton/Ashby. 841-8334. 2-17-R

ONE BEDROOM 2535 College to share \$45, completely furnished. TH 8-7788 after 5. Male grad. or undergrad. 2-14-L

THREE SENIOR GIRLS WISH 4th roommate for modern apartment. Pool, two bedrooms, W/W carpeting, disposal. Only \$40 month. Call 848-7325. 2-18-F

GIRL: MODERN 2 BED. apartment, pool. Three want fourth. Reasonable. Convenient. 848-2843, 1927 Dwight Way #110. 2-18-B

FEMALE STUDENT to share spacious 1 bed. apt. with another. \$55. 2 blocks to campus. TH 1-6568 after 5. 2-18-G

ROOMMATE NEEDED: 2 bed. deluxe modern apt. with 3 other girls. \$53.75. Bayview, dishwasher, sundeck. Sylvia 843-6817, 843-0285. 2-18-K

APPRECIATE CHARMING ENVIRONMENT? Quiet 2 bed. apt. with pool. Graciously furnished, own room. Female. \$62.50. LA 4-8975. 2-25-C

FEMALE SENIOR WISHES to share furnished apartment. Good clean kitchen close campus. \$47.50. 843-2890. 2-29-B

MALE UPPER DIVISION or Grad. 4 rooms furnished, fireplace, 2 1/2 blocks north campus. \$62.50/mo. 849-2583. 2-14-Z

NOW: 1 MALE student needed to share modern 2 bed. apartment with 3 others. Call TH 8-7187 or come to 2131 Parker Apt. E. 2-17-0

APARTMENT TO SHARE. Need two male undergrads. to share 2 bed. furnished apt. with kitchen. Excellent location 1/2 block from campus. \$33 month. 2517 Durant apt. 1. 2-14-M

GIRL WANTED TO share large furnished apt. Own bedroom Telegraph and Haste. 845-1246. 2-17-A

ROOMMATE NEEDED TWO bedroom—bath. Pool. Call TH 5-6331 or inquire apt. 203, Bishop Parker Apts. 2-14-C

GIRLS NEED 4th roommate. Modern apt. 2 blocks from campus. Call after 3 p.m. 843-3151. 2-14-J

MALE: LARGE COMFORTABLE 2 bedroom apartment \$45. 848-6684. 2-17-Mc

2 MEN WANTED. Furnished. 2 blocks from campus. \$40/month including utilities. Call Michael Kroil 841-9732. 2-14-K

WANTED: ONE GIRL to share deluxe, modern apartment. Beautifully furnished, pool. 2124 Parker. Call TH 8-8158. 2-20-W

SENIOR OR GRAD WOMAN share cottage-apt. with two. Fireplace, garage, yard, washer. \$41.66. 841-2068. 2-20-K

TWO GRADUATE GIRLS will share with one more two bedrooms, deluxe apt. No lease. 841-2426. 2-17-S

GIRL TO SHARE with 3 others furnished, 2-bedroom, view. \$50. 2329 Channing, Apt. K. 2-18-F

WANTED COUPLE OR SINGLE: For very large three-bedroom apartment in Oakland, \$65-845-7811. 2-20-B

Miscellaneous Wanted

WANTED: HERMES TYPEWRITER. Phone 841-8108. 2-14-B

WANT AUTOHARP. Will pay cash or trade. 2539A Dwight Way. See Ron. 2-14-Mc

Room and Board

U.C. RESIDENCE CLUB. \$90 and up. Single or double with private bath, daily maid service, TV, 24 hour desk service. Special semester rates for students. 1/2 block from campus. Co-ed. 2045 University Ave. 841-1163. 2-25-L

INTERNATIONAL HOUSE

Openings in double rooms with board. Available for upper division and graduate men and women.

Semester Contract. Apply: Residence Office

International House

2-14-I

PICK A WINNER. Hearty breakfast, delicious dinner. 848-9561. 2434 Warring Street. 2-14-L

BOARDING MEN AND WOMEN

Board and Room—Spring Semester Breakfast, Lunch, Dinner. Six days a week Sunday Brunch. All you can eat.

Study quarters, spacious living room Laundry, Television, Student Kitchen

848-9561

2434 Warring Street 2-14-L

APARTMENT \$350. NORTHSIDE across from Tolman, includes board and kitchen quiet neat. Similar units \$450. Men—must rent. Miller TH 5-0427. 2-17-C

INTER-FAITH COED Residence Fellowships. 3 blocks south U.C. Students, employed. Room, all meals, excellent food. TH 3-2461, if no answer TH 1-4686, TH 5-4832. 3-9-L

SINGLE ROOM & BOARD 2528 Benvenue. \$400 semester. Call George Curtin 845-9471, Charles Boddie 849-2896. 2-17-B

MAN: SPRING SEMESTER. \$370. 13 meals/week. Double room. 2 blocks from campus. TH 5-9126, Bob Van-Dyke. 2-14-H

CONTINENTAL BOARDING HOUSE. Two rooms available with board and maid service optional. Call TH 5-9270. 2-18-F

MAN: LARGE DOUBLE, close to campus. Kitchen privileges. Ping-pong, TV room. 841-6714. 2-18-B

SPACE FOR MAN student on North side campus. 841-6714. 2-18-B

SPACE FOR WOMAN student, close to campus kitchen privileges. 841-6714. 2-18-B

HOUSING YOU LIKE

Room and Board for one more girl only at BAPTIST STUDENT CENTER 2601 Channing Way Call: 843-1183 2-19-B

MALE: DOUBLE ROOM with board. Maid service exc. meals. TH 5-9341. Hank Johnson, Jon Rosenthal after 6. 2-19-J

GIRL SHARE 2 bedroom unfurn. apt. \$37.50 plus utilities. TH 5-5054. 2-19-C

ROOM, BOARD CONTRACT. Will sell at loss. Pool, all facilities. 841-9942 after 6. 2851 Dwight Way. 2-14-H

LOOK WHAT'S COOKING. Family style, home cooked meals scheduled for students. Baptist Student Center, 843-1183. 2-26-B

PRIVATE ROOM, BATH, LIMITED meals. Plus extra work for gardening etc. Need car. CL 4-3545 after 7. 2-14-H

THREE BOARDING HOUSE contracts for sale. \$440 each per semester. Reduced from \$540. Heated pool. Location—(corner) Dwight, Warring near campus. Call TH 5-9130 Steve Colliau. 2-20-C

Tutoring

TUTORING SERVICE BERKELEY SCHOLAR'S AID Effective tutoring in more than 300 courses: math, physics, chem., stat., econ., bus. adm., history, 6 languages, music, English, composition. Training for term papers, etc. Fair rates. Call LA 5-4496 for immediate service. R-2-19-L

TUTORING FOR MEN IN ANY lower division mathematics or physics. Esten Buck (MA '30). 2424 Channing Way. TH 8-3346, 7 to 7:30 p.m. Rates reasonable. R-3-6-B

FRENCH, ITALIAN, GERMAN, SPANISH COACHING, experienced tutor. Course exams. M.A. Ph.D., translations. 3 minutes Duwinnelle. TH 3-5158. 5-22-S

RUSSIAN BY NATIVE speaker retired instructor at Cal. TH 5-7461. 5-22-P

Situations Wanted

CHIEF FIFTEEN OFFSET Multi T 51 Color specialist. 12 years experience in line. Box L, 101 Eshleman. 2-19-M

Lost and Found

LOST AND FOUND is located in Room 2, Sprout Hall. Hours: 12 noon to 4 p.m., Mon. through Friday.

LOST CAMPUS AREA, brown and tan Doberman Pinscher with tan collar. Owners miserable. Reward 841-4797. 2-14-S

Transportation

WANTED: RIDE OR carpool from Walnut Creek. Call 934-3267 evenings. 2-11-B

Design Incorporates Policies Of Latest Ecumenical Council

(Continued from page 1) the first Gothic cathedrals were constructed. The concept of a church changes from age to age because the latest building techniques are used in different times to construct different structures.

"Today, the shape of the new center is possible because of the new building techniques available. For example, the roof over the chapel will 'float' above the walls, supported only by four columns. The space between the roof and the walls will vary, filled by glass panels of various sizes, and possibly of various colors."

Father Quinn also said many people felt "the chapel spoke too loudly." Considering the present neighborhood in which the center will be located, this is a factor to examine. According to the booklet of instructions to the architect, "The complex should be readily identifiable, without being overly assertive."

However, the instructions went on to say, "The new buildings, particularly the Church, should have dignity and quiet power, befitting their purpose."

Planning started in 1959, by asking students, alumni, friends, and Catholic officials what was needed in a student chapel and religious center. By combining these recommendations in a complex of three integrated functions—the chapel, the student center, and the rectory—the final design was adopted.

The chapel was also influenced by the policies developed by the latest Ecumenical Council. The Council called for an "Age of the Laity," with greater participation by the congregation in the church service. The resulting plans call for a semicircular seating arrangement for 700, but no person will be more than seven rows from the altar.

Scientist Given Research Grant

Dr. John E. Casida, a University scientist, has been awarded a \$3,500 research grant for the study of possible harmful agents in household insecticides.

A. Lee Oder, president of the American Cancer Society's Alameda County Branch, announced that the six-month grant is part of the Society's regular research grant program.

Casida has been studying carcinogenic agents in mammals and insects for many years. In the control of many common household pests, certain compounds are used which he believes could possibly cause cancer in the mammal or insect.

PAYLESS

31,000 Records To Go
\$3.98 Beatles-LPS \$2.79

\$5.98 Folkways \$3.98

3 Penny Opera \$1.98

DIAMOND NEEDLES

DC Pub Board Positions Open

Applications are available in 101 Eshleman Hall for two student positions on the Daily Californian Publisher's Board.

The students must be juniors or seniors.

Applications will be due at 4 p.m. Tuesday. All applicants will be interviewed by the Publisher's Board, which selects the student members.

The Publisher's Board appoints the Daily Californian's editors and business staff, and meets regularly to discuss the newspaper's problems.

(Good student discount available)

CAR INSURANCE DUE?

Save with State Farm's low insurance rates for careful drivers.


SEE ME

Dave Schiller

1537 Shattuck

TH 1-6171

Evenings 254-5072



STATE FARM MUTUAL

Automobile Insurance Company
Home Office: Bloomington, Illinois
STATE FARM Insurance, Dave Schiller
TH 1-6171. Good rates.




Taste before you buy.
Rent a barrel for your party!
Half a gallon Burgundy.

87c

OAK BARREL WINE CELLARS

1485 San Pablo Ave.
Berkeley LA 6-3376



Ladybug

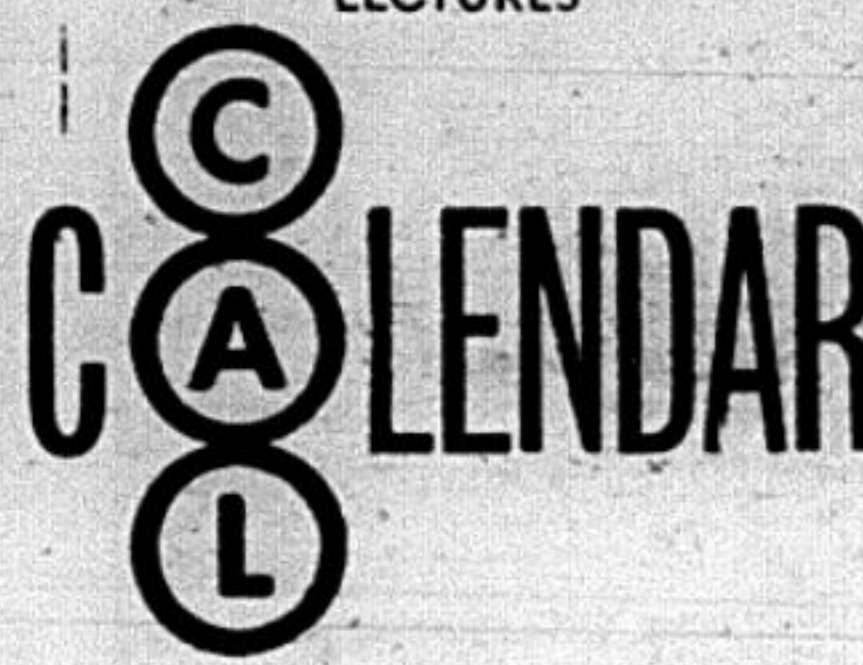
SATHER GATE APPAREL

Durant and Telegraph



Le Treteau de Paris' Roger Montsoret and Luce Vincent in "L'ALOUETTE" Sunday, February 16

THE COMMITTEE FOR ARTS AND LECTURES



FRIDAY February 14
8:00 p.m.
8:45 p.m.

LECTURES (2): "A PSYCHOLOGICAL APPROACH TO INTERNATIONAL CONFLICT." Morton Deutsch, Professor of Psychology and Education, Teachers College, Columbia University.

"ARMS MANAGEMENT IN AN INSECURE WORLD." Thomas C. Schelling, Professor of Economics and Member of the Center for International Affairs, Harvard University.

Both lectures in Wheeler Auditorium FREE

CONCERT: MARIE-CLAIRE ALAIN, Organist. Program includes works by Couperin, Pasquini, Buxtehude, Bach, and Franck.
8:30 p.m. Hertz Hall 50c
All Seats Reserved

DRAMA: "ST. JOAN," by George Bernard Shaw. A concert reading by the University Theater.
8:15 p.m. Studio Theater, Dwinelle Hall 25c
Seats Not Reserved

through SATURDAY February 15

SATURDAY February 15
8:30 p.m. Hertz Hall \$2 (students, \$1)
All Seats Reserved

SUNDAY February 16
2:30 & 8:30 p.m., Wheeler Aud., \$3.25 (stdts. \$1.75)
All Seats Reserved

CONCERT: UNIVERSITY REPERTORY CHORUS, orchestra and soloists, directed by Edward Lawton, present Bach's "St. Matthew Passion."
8:30 p.m. Hertz Hall 50c
All Seats Reserved

MONDAY February 17
4:30 and 8:15 p.m. Wheeler Auditorium Matinees Evenings (All Seats Reserved)
(Seats Not Reserved)
Series Tickets (6)-\$4.50 Single Admission \$1.00
Single Admission 85c

CONCERT: UNIVERSITY REPERTORY CHORUS, orchestra and soloists, directed by Edward Lawton, present Bach's "St. Matthew Passion."
8:30 p.m. Hertz Hall 50c
All Seats Reserved

TUESDAY February 18
FILMS: CINEMA REDISCOVERIES. Neglected Films of Merit.
"THE LETTER THAT WAS NEVER SENT." (1959) Directed by Mikhail Kalatozov, with Yevgeni Urbansky and Tatiana Samoilova. (Russian, with English subtitles). (98 min.), and "VIOLENT SUMMER" (1960)—West Coast Premiere. Directed by Valerio Zurlini. With Eleanora Rossi-Drago and Jean Louis Trintignant. (Italian, with English subtitles.) (110 min.)
4:15 & 8:15 p.m. Wheeler Aud. \$1 (students 85c)
Tickets Sold only at Door. Seats Not Reserved.

LECTURE: "FAUST FOR TODAY," Heinz Politzer, Professor of German, Department of German, U.C., Berkeley.
8:15 p.m. Room 145 Dwinelle Hall FREE

WEDNESDAY February 19
LECTURE: "DONNE'S POETIC MODELS," Robert C. Bald, Professor of English, University of Chicago.
8:15 p.m. Room 145 Dwinelle Hall FREE

CONCERT: JULLIARD QUARTET. Third program in Beethoven Quartet cycle.
8:30 p.m. Hertz Hall \$2 (students, \$1)
All Seats Reserved

THURSDAY February 20
LECTURE: "THE FIRST FORTY YEARS: THE COST OF POLITICAL AND ECONOMIC UNIFICATION (1860-1900)." The first in a series of five lectures on "ITALY DURING THE LAST ONE HUNDRED YEARS: FROM AN AGRICULTURAL TO AN INDUSTRIAL COUNTRY." Manlio Rossi-Doria, Prof. of Agricultural Economics, University of Naples; Visiting Professor, Chair of Italian Culture, Department of Italian, U.C., Berkeley.
8:15 p.m. Room 145 Dwinelle Hall FREE

FRIDAY February 21
CONCERT: JULLIARD QUARTET. Fourth in a series of five programs in the Beethoven Quartet cycle.
8:30 p.m. Hertz Hall \$2 (students, \$1)
All Seats Reserved

SATURDAY February 22
CONCERT: JULLIARD QUARTET. Fifth and last concert in Beethoven Quartet cycle.
8:30 p.m. Hertz Hall \$2 (students, \$1)
All Seats Reserved

SATURDAY February 15 through WEDNESDAY March 25
"ONZE SCULPTEURS AMERICAINS DE L'UNIVERSITE DE CALIFORNIE, BERKELEY." Direct from Paris, the prize-winning sculpture exhibition which was the U.S. Entry in the 1963 Biennale de Paris.
UNIVERSITY ART GALLERY
12-6 p.m. daily FREE

Tickets and information available at CAL Ticket Office, 2620 Bancroft Way, Thornwall 1-1170. Hours: 9-5:30 p.m. Monday Through Friday