

The Daily Californian

Ninety-Three Years of Continuous Publication

Vol. 184, No. 13. Berkeley, California, Monday, February 24, 1964 THornwall 8-4800, Ext. 3932



PRESIDENT LYNDON B. JOHNSON
"There is no panic on our agenda"

34,000 at UCLA

Johnson Reiterates U.S. Foreign Policy

BY PAT MAR

LOS ANGELES—An International atmosphere pervaded UCLA's Charter Day ceremonies Friday beginning two days of policy discussions between U.S. President Lyndon Johnson and Mexican President Adolfo Lopez Mateos.

An audience of 34,000, including many Mexican-Americans, filled a temporary \$50,000 stadium constructed for the event to hear

Simple Signout System Seems Successful

After a weekend of operation, the pilot signout program in Cunningham and Freeborn Halls seems successful.

Under the new program, detailed signout sheets in the lobby are replaced by cards which can be flipped to read "in" or "out" posted on floor bulletin boards. Problems such as congestion around the signout desk, pranksters stealing or defacing the sheets, the numbers of minor violations possible and the paper work involved are reduced.

Ronnie Kordell, judicial chairman of Freeborn and one of the originators of the plan, said that so far the system is very popular. She noted there have been very few cases of girls forgetting to flip their cards and she attributes this to the enthusiasm of the girls and their desire to see the system work.

The residents themselves appreciate the sense of freedom provided by the new system. Kathy Samuels, a freshman in Cunningham said, "Now, I don't feel like I'm petitioning to leave the dorm."

The convenience of the new method is another cause for the enthusiasm. Several coeds were pleased about the absence of a bottleneck at the lobby desk, and the near impossibility of forgetting to sign out since the cards are right by the elevator.

Johnson reiterate the administration's foreign policy objectives and Mateos speak on the university's role in human understanding. Both received honorary degrees from the University.

A squadron of University helicopters bearing the two presidential parties and White House press corps, circled the crowded stadium and landed on an adjoining field.

Among the guests were U.S. Secretary of State Dean Rusk, Mexican Foreign Minister Manuel Tello, U. S. Assistant Secretary of State for Inter-American Affairs, Thomas C. Mann, Mexico's Ambassador Antonio Corillo Flores, U.S. Senator Thomas Kuchel, California Governor Edmund G. Brown and Mexican educational leaders.

Armed guards perched on the top of UCLA's buildings and the tall dormitories overlooking the athletic field observed special regulations for the day—all windows remained closed and all doors open during the ceremony.

Johnson said U.S. foreign policy offered "neither room for complacency nor for alarm." He promised the U.S. will never retreat from its obligations to any ally nor be intimidated by "any state anywhere, anytime in the world that chooses to make itself our adversary."

"There is no panic on our agenda."

He pledged continued support to South Vietnam against the Communists, promised U.S. efforts to solve the Cyprus dispute, called for a "covenant of cooperation" between the U.S. and Panama, and with a dig at Senator Barry Goldwater, boasted "we have dealt with the latest challenge and provocation from Havana without sending the marines to turn on a water faucet."

Lopez, whose speech was paraphrased into English by an interpreter, said the highest duty of a university is discovering and transmitting the laws governing nature and society, with one main purpose: "to use, in the best possible way, the natural powers to make life among men more harmonious everyday."

Voluntary Redirection Gains Time

The University has gained an extra year to solve its over-enrollment problem at the Berkeley campus.

President Clark Kerr told the Regents Friday that more than 700 Berkeley applicants are expected to enroll at another University campus voluntarily. In addition, another 500 students who are registered but not actually studying at Berkeley will be deducted from Berkeley's enrollment figures.

Kerr sent letters to 3,500 potential Berkeley students a month ago asking them to consider another campus. By Friday 1,750 persons had replied and 15.7 per cent of these changed their campus choice. Another 3,000 letters will be mailed this month, and if the trend continues, about 700 persons will change campuses by the time all replies are in.

The Santa Barbara campus is the leading second choice followed by Davis and Los Angeles, Kerr reported.

Redirection of students to other campuses has caused a controversy throughout the University system. The Berkeley Academic Senate favors using academic criteria to select students, while the other campuses fear this would give Berkeley the best students, leaving the second-best for the smaller campuses.

Strong Holds Office Hour

Chancellor Edward W. Strong will hold a student office hour from 3-4 p.m. today in 3335 Dwinelle Hall.

Students should make an appointment by calling Mrs. Akiko Owen at THornwall 5-6000, ext. 2331.

Anti-CORE Pickets Foil Lucky 'Shop-in'

CORE pickets at Lucky Store No. 18 had unexpected guests over the weekend.

Students from Boalt Hall began Thursday to replace the mounds of groceries which had been piled on the checkstands by the CORE "shopping-in" tactic.

By Friday, the sixth day of picketing, word had spread and some 30 students appeared at 4 p.m. to help replace the groceries.

The added volunteers were independents, fraternity and sorority members, and graduates. Many students heard about "the anti-shop-ins" from friends while others passed the store and stopped to help.

Lucky Manager Louis Mascola said when protestors removed merchandise from the shelves, the "anti-shop-ins" replaced it. Mascola rerouted customers to the meat counters because of the resulting confusion at the checkstands.

Mark Jordan, first year law student and one of the "anti-shop-ins," said "What they're doing is absolutely wrong and contrary to the law." He added, "We're not against them (CORE), it's the quality of their acts. They've met a resounding defeat if I must say."

As Jordan was speaking, 12 students from Logie House were

sitting on the counters to prevent goods from piling up. Burk Murray, a volunteer who stayed at Lucky's until 10:30 p.m. Thursday, said, "Maybe they have a good point, but they go about it in the wrong way."

Murray and Jordan estimated that for every CORE member "shopping-in," about five students from Boalt Hall, Herrick Manor, Logie House, Barrington and Deutsch Halls and Newman Club put merchandise back.

Michael Hemp, a Lucky store employee, said clerks usually estimated the amount of the groceries on the counter, rang it up, and when there was no money, the food went back on the shelves. Some sales ran up to \$80. Hemp said the receipts are kept and deducted from actual sales.

A member of the Berkeley police said that behavior in general, was good but he added, "One problem is that volunteer students are not organized. They should establish some leaders."

Lucky's business volume has remained the same, dropping only slightly in the evenings, but Manager Mascola added "all of our senior citizens are disgusted about this."

Mascola expects approximately 100 Boalt Hall students and additional fraternity and sorority members to replace merchandise.

Legal Question

Graphic Arts Petitions Under J-Com Study

Petition proceedings for an injunction halting the sale of ASUC Graphic Arts have been postponed until this morning to allow Student Judicial Committee more time to consider the constitutionality of the injunction.

J Com will resume hearings at 8:30 a.m. today in 406-408 Student Union.

J Com member Ron Yank said more time was also needed to gather information on the petitioners' claim the ASUC Senate acted "improperly" in passing the motion allowing ASUC Executive Director Forrest Tregua to sell Graphic Arts.

The four petitioners, James F. King, Bernard Herschberg, Stephen N. Huffman and Robert T. Cockburn, called for the injunction to prevent Graphic Arts from being sold while a petition for a student referendum on the issue is being circulated.

The petitions charged Friday the Senate based its decision on confidential information which

"was not reported to the student body nor brought out materially in Senate session . . ."

"The confidential nature which surrounded the action taken by the Senate was entirely improper. . . . We submit that on the basis of this improper procedure by a majority of senators, the student body has a right to review their actions," King told J Com.

Tregua argued, through a statement to J Com, that an injunction is unconstitutional. Under the ASUC Constitution J Com's powers extend to questions concerning the constitution, ASUC rules and regulations or the by-laws of the ASUC's subordinate organizations.

"Therefore there exists, under Student Judicial Committee procedures for issuance of an injunction, no basis for such an action by the committee," Tregua said.

Furthermore, ASUC First Vice-President Bob Draper, arguing the ASUC's case, said not only is the injunction unconstitutional, but so is any student referendum on the proposed sale.

ASUC President Mel Levine said Wednesday that a referendum petition was unconstitutional because the ASUC Constitution does not allow referendums on "budgetary" matters.

Campus Goes Swedish



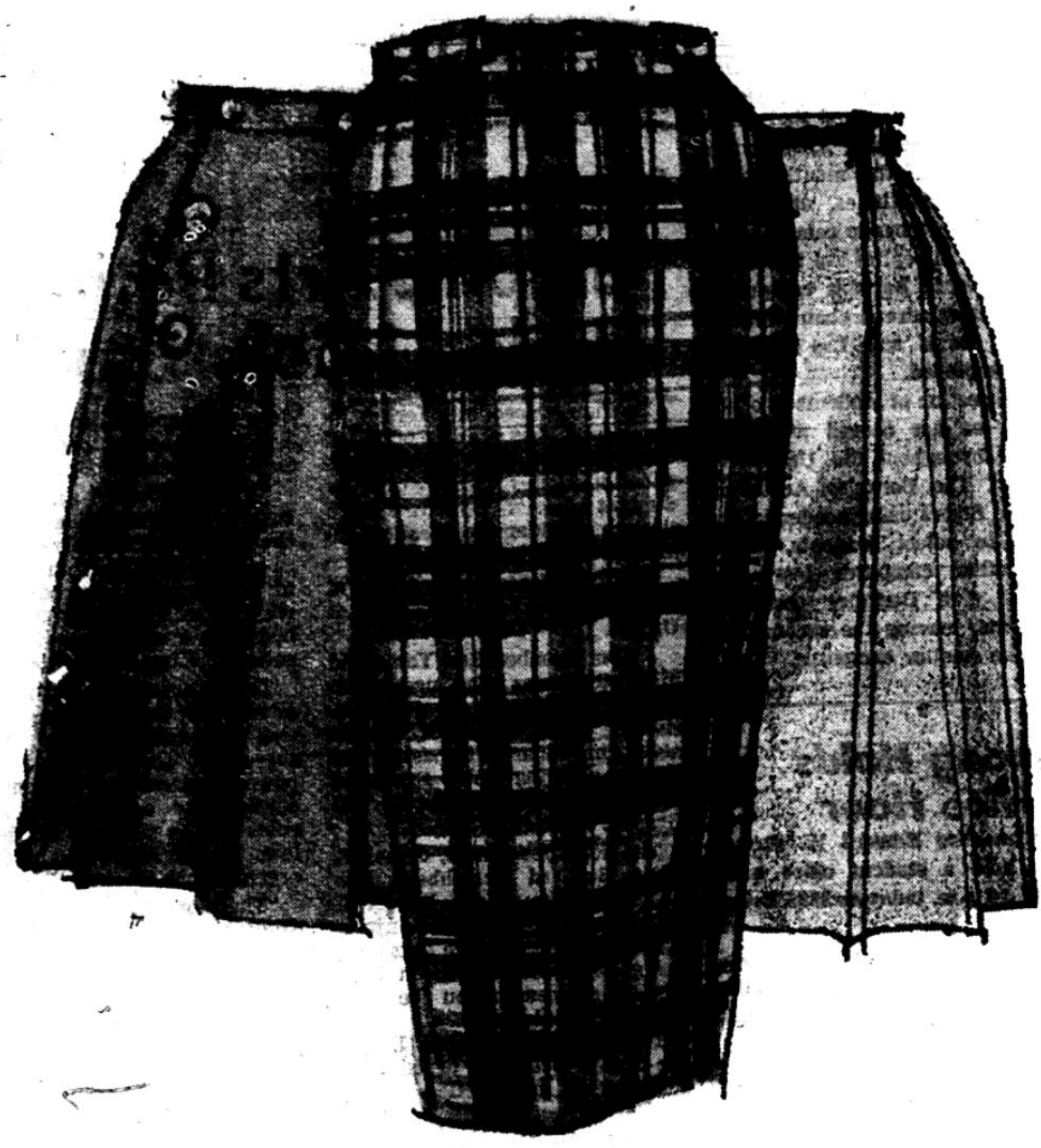
SWEDISH ART . . . pictured above is one of the exhibits of Swedish Steuben Glass now on display in the Student Union lobby. The exhibit is presented in conjunction with San Francisco's Sweden Week. For more details, see page 10.

BEARS

Stay cool & comfortable during warm weather by having a few short-sleeved white shirts in your wardrobe. And check out R/A's special: regularly \$5, now just 3.99 per. These are of pima cotton batiste or cotton oxford, your choice of collar styles. Also other great buys: Dacron polyester & cotton T-shirts at 1.59, white cotton or colored Madras boxer shorts at 3/for \$5, etc., etc.

ROOS/ATKINS

Scoop!
Crisp New Spring Skirts
Now Only
7.99



Now's the time to buy the freshest-looking skirts on campus! Small price for easy-care fabrics, like Dacron polyester & cotton blends. And the silhouettes! Front wraps sheath, flared, A-line! Matchable colors! Come scoop 'em up. 8-16

ROOS & ATKINS

California Shops
 2536 Bancroft Way

Law Appointment

New Boalt Professor Joins Psychiatry and Law

BY DAVE ALLEN

The appointment of Bernard L. Diamond as Boalt Hall professor of law and criminology is a sign of growing recognition in legal circles that psychiatry can make a significant contribution to law.

Dr. Diamond, a practicing San Francisco psychiatrist and psychoanalyst, has had no legal training, although he has always taken an interest in criminology.

As of now, Yale, Michigan and Pennsylvania are the only other universities which have appointed psychiatrists to their law schools.

But more psychiatrists are likely to join law schools in the future. There has been a tendency for psychiatric evidence to be used in both civil and criminal cases ever since the 1954 Supreme Court decision on school segregation which used psychiatric and sociological data.

According to Diamond, there is nothing new about the use of psychiatric evidence in criminal cases since it was introduced in the trials of the assassins of both Garfield and McKinley.

But the M'Naghten Rule, based on an 1846 legal decision, is in effect in most states, preventing psychiatry from making a considerable contribution to law.

The rule states that a defendant is presumed to be guilty unless he is unable to tell right from wrong. Dr. Diamond said this has meant "the psychiatrist must either renounce his own values with all their medical-humanistic implications, thereby becoming a puppet doctor used by law to further the punitive and vengeful

goals demanded by society; or he must commit perjury . . ."

Every psychiatrist who states on the witness stand that almost any defendant, no matter how mentally ill, knows the difference between right and wrong in the literal sense of the phrase, becomes an expeditor to the gas chamber, he explained.

But fortunately the M'Naghten Rule is dying, Dr. Diamond added.

Many states have adopted "irresistible impulse" clauses declaring that the man who cannot control his criminal actions, even if he knows they are wrong, is legally insane.

Even more enlightened rulings declaring a criminal insane if his mental condition has been a major contributing factor to his crime, are slowly being adopted in many legal circles, Dr. Diamond said.

San Francisco lawyer Melvin Belli hopes to have Jack Ruby's trial moved from Texas where the M'Naghten rule is in effect, to a state which has more liberal psychiatric legislation, Dr. Diamond added.

New Mexico U. Pledges Hurt House Ousted

The Sigma Alpha Epsilon chapter at the University of New Mexico has been suspended until May 20 following an incident which sent 10 of 21 pledges to the infirmary and one later to a hospital.

Sherman E. Smith, dean of men, said medical diagnosis indicated extreme exhaustion and over-exertion. All of the hospitalized pledges have been released from the infirmary and the hospital.

Smith announced the suspension which prohibits the election of officers, holding of meetings, pledging or initiation, organized participation in campus activities, and fraternity social functions.

The fraternity's charter has been suspended by its national office and by the university. Both will review the suspension May 20 to decide whether to allow the chapter back on campus.

In other SAE news, the Boston University chapter has been placed on social restriction this semester. The dean of men's office would give no reason for the action.

Placement Center

MBA candidates and Business Administration majors interested in summer work should register now with Mrs. Graham, Student Placement, Room 8, South Hall.

Key-punch operator is needed on-campus for part-time work on call. Man or woman student is eligible, either an experienced operator or graduate of a recognized training course.



First American Tour

The Committee for Arts and Lectures presents

JOHN OGDON
 PIANIST

First Prize Winner in 1962 Tchaikowsky Competition.

WEDNESDAY, February 26

Hertz Hall • U.C. Campus
8:30 p.m.

Adm. \$2.50 Students \$1.50

For tickets and information call CAL Ticket Office, TH 1-1170.

ENGINEERING SENIORS!

Your Future Is Unlimited in
LOS ANGELES

**CIVIL
 ELECTRICAL
 SANITARY**

Engineers are needed for the challenging work of planning, designing, building and operating one of the largest electric and water systems in the world. Arrange with the Placement Office to talk with our engineering representative, who will be on campus

MONDAY, MARCH 2, 1964

DEPARTMENT OF WATER AND POWER
 City of Los Angeles

Man of Many Talents to Speak Chancellor Strong Moderates

San Francisco Medical Center Chancellor John Bertrand DeCusance Morant Saunders, whose name is only outmatched by his accomplishments will meet with Chancellor Strong, noon today in West Pauley Ballroom to discuss "Origins of Renaissance Medicine."

Born in 1903 in Grahamston, South Africa, Chancellor Saun-

ders, who trained for the medical profession, has excelled in various unrelated areas of human endeavor.

He has worked as guide on elephant expeditions, acted as medic on a whaling ship, raced cars professionally in Europe and placed in the British Open Golf Tournament.

In addition Saunders paints water colors, speaks fluent Swahili, and is a gardener.

Dr. Saunders studied at St. Andrew's College in Scotland, and at Rhodes University College in South Africa before earning his medical degrees at the University of Edinburgh in 1925. He has been a member of the University of California Medical Center Faculty since 1931.

But today Dr. Saunders will be medical historian specializing on the Renaissance.

What will make the lecture unique will be the presence of Chancellor Strong who will act as moderator. Strong is also Renaissance historian, a philosophy historian who specializes in Renaissance scientist Galileo Galilei.

Dr. Saunders' illustrated lecture is sponsored by the Honor Students Society as its Spring 1964 Forum Lecture. Admission is free.

REDISTRICTING

In restoring equality of popular representation as the primary factor in county supervisorial districting, the California Supreme Court has given the state's urban centers a legal base for challenging district arrangements that favor rural areas, according to a Davis political scientist.

Ads Called Science

Pease Speaks On Ads; Calls Agencies Ad Labs

"People don't read ads; people read what interests them and sometimes what interests them are the ads."

This is the opinion Paul Pease, copy chief of Hofer, Dieterich & Brown, Advertisers, expressed in a lecture Thursday on "Lab Ads & Ad Labs."

Lab ads are specific advertisements for scientists and ad labs are the advertising agencies. Pease calls the agencies labs because he believes advertising is truly a science and the agency is the advertising-scientist's lab.

Scientific ads interesting to readers have certain characteristics in common, Pease said. They generally have a "graphic hook," a large photograph of groups of people on a piece of equipment. The ad copy may provide interesting information about a company's work, pose an intriguing question to a scientist, or just talk in the language of the trade.

An ad for a company needing several experienced physicists would picture a "hunk of sophisticated machinery" with a few people standing around it. The men would be approximately the same age as the physicists needed. Caption below the picture will be a headline asking the reader to consider the possibilities of working with such equipment; the rest of the ad copy will build up the company.

Pease assured his audience that recruiting ads are, for the most part, honest. Ads which falsify the available jobs generally return to haunt the company, he added.

People who read "Life" or

Coffee Hour Held

Occident, campus literary magazine, will sponsor a writers' coffee hour from 4-6 p.m. Friday in the Stephens Memorial Room of the Student Union.

VIN ET FROMAGE

presents an evening of

Dolmetsch

and

Chopin

TONIGHT

From 6 p.m. on

1556 SOLANO

525-9916

Controversial Forum Talks

The controversial dormitory issues and the equally controversial picket of Lucky Store #18 were discussed Thursday night at the ASUC Student Forum.

Speaker Gary Reigg classified the meeting officially as "students assembled" and not an actual meeting of the forum, since many speakers were non-members.

A proposal that the University halt further residence hall construction until the cause for the "dorm exodus" is found was tabled until next week.

One student turned, sat on a table facing the audience and said the reason for lockout, the dorm problem, and almost every other restrictive measure imposed on the students was due to the parents' desire for the student not to mature. Other students objected, saying lockout is protective in nature.

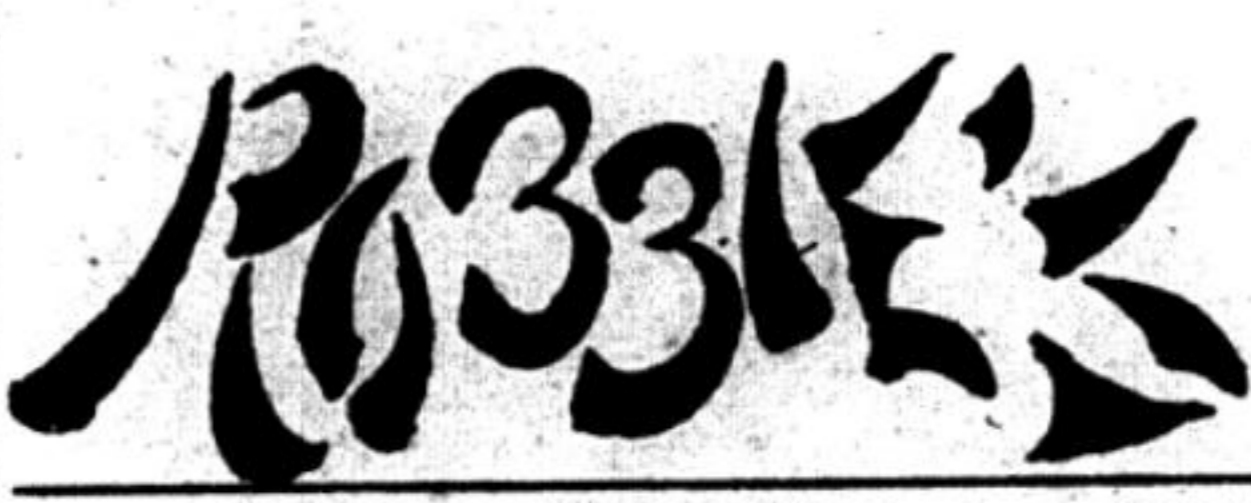
The second proposal affirmed the Forum's belief in peaceful picketing as a method of fighting discrimination. However it deplored the campus CORE picket of Lucky Store #18. The resolution passed shortly before adjournment at 9:30 p.m.

Hofbrau

Chinese Food

ORDERS TO TAKE OUT

Hours: 11:00 a.m. to Midnight



CAFETERIA

2379 Telegraph Ave. TH 8-6475

A.S.U.C. STORE CALENDAR

MONDAY, FEB. 24

- UGLY MAN CONTEST**
- 12:00 Noon—Lecture: "Renaissance Medicine." Provost Sanders..... Ballroom, SU
- 3:30—Rugby: Cal vs. University of British Columbia..... Memorial Stadium
- 4:15—CAL Lecture: "The Covenant Mediator in The Old Testament." James Muilenburg 145 Dwinelle
- 4:30, 8:15—CAL Films: "3000 Years Under the Sea" **..... Ballroom, SU
- 8:15—CAL Lecture: "Abstract Lyrics of Expressionism: End or Transformation of the Symbol," Richard Brinkmann..... 145 Dwinelle
- 8:30—CAL Concert: University Repertory Chorus, "St. Matthew Passion" Hertz Hall

TUESDAY, FEB. 25

- UGLY MAN CONTEST**
- 4:15, 8:15 p.m.—CAL Cinema Rediscoveries: "Casque D'or" and "Arturo's Island" Wheeler Aud.
- 4:15—CAL Lecture: "British Political Parties: Activism Reconsidered," Jean Blondel..... 145 Dwinelle
- 7:00—ASUC "Just Dance" Ballroom, SU
- 7:00—ASUC Master Point and Duplicate Bridge T.V. Lounge, SU

WEDNESDAY, FEB. 26.

- UGLY MAN CONTEST**
- 4:00 p.m.—Swimming: Cal vs. University of Pacific..... Harmon Gym
- 8:00—Lecture: "New Images: American Painting Since 1946, Great Divide: New York School," George McNeil..... 101 Cal Hall
- 8:30—CAL Concert: John Ogdon, pianist **..... Hertz Hall

THURSDAY, FEB. 27

- UGLY MAN CONTEST**
- 3:15 p.m.—Baseball: Cal vs. University of San Francisco..... Edwards Field
- 8:15—CAL Lecture: "Italy During the Last One Hundred Years: The Rise of Industry and the Agricultural Crisis: 1880-1900," Manlio Rossi-Doria..... 145 Dwinelle

FRIDAY, FEB. 28

- HIGH SCHOOL MODEL UNITED NATIONS**..... Student Union
- UGLY MAN CONTEST**
- 3:15 p.m.—Baseball: Cal vs. San Jose State..... Edwards Field
- 7:00—Co-recreation Hearst Gym
- 7:30—Wrestling: Cal vs. San Jose State..... Harmon Gym
- 8:00—Gymnastics: Cal vs. San Francisco State..... Harmon Gym
- 9:00—ASUC Cabaret Bear's Lair, SU

SATURDAY, FEB. 29

- HIGH SCHOOL MODEL UNITED NATIONS**..... Student Union
- 2:00 p.m.—Swimming: Cal vs. Stanford..... Harmon Gym
- 2:00—Baseball: Cal vs. Fresno State..... Edwards Field
- 8:00—Basketball: Cal vs. U.S.C..... Harmon Gym
- 9:00—ASUC Hootenanny Bear's Lair, SU

SUNDAY, MARCH 1

- 1:00 p.m.—Co-recreation Harmon Gym
- 8:00—ASUC Film: "Lady With the Little Dog" Ballroom, SU

... EXHIBITS ...

- Feb. 15-March 25—"Onze Sculpteurs Americains" Univ. Art Gallery
- Thru Feb. 27—Shakespeare Exhibit Student Union
- Thru March 15—"The Dreamers: A Contemporary California Indian Religion" Lowie Museum

* Tickets on Sale at Door

** Tickets on sale at ASUC Box Office and Committee for Arts and Lectures

This is the last week of our
Special Leap Year Sale

20% off on: Cal jackets • alarm clocks • brief cases • umbrellas • lamps

25% off on: calendars

\$1 off on: girl's white tennis shoes

50c off on all 3-ring binders priced at \$2.50 and up

Sale ends Saturday, Feb. 29



STUDENT UNION PLAZA

Cal Goes Into WSU Game Alone in Second

BY JOHN RODGERS

The Golden Bears of California find themselves alone in second place of the Big Six by virtue of last Saturday's victory over the Washington Huskies, 57-51, and the defeat of Stanford by UCLA, 100-88, as they go into tonight's game against Washington State.

The Bears, now 7-4, need to win the game tonight against the Cougars to be assured of having a .500 season in AAWU competition as they meet UCLA and Stanford, both away, in the last two games of the regular season. The Indians are the only real challenge to the runner-up position with a 6-5 conference mark.

The way the game started many people began to feel that it was going to be a rout as the Bears hit a hot 52 per cent from the floor to zoom off to a 36-28 half-time lead behind Dan Wolthers' 14 first-half points.

After the intermission the Huskies came out of the locker room with one purpose—to overcome the eight point Cal lead. But all the Huskies could do was to close the gap to one point with 7:34 remaining in the game when Clint Peoples made two charity tosses. From that moment the Bears widened the gap to win going away.

Leading the Cal point makers was Dan Wolthers, who added six more points to his half total to wind up with 20 points. He also grabbed seven rebounds, a total matched by big Camden Wall, who had seven points.

Forward Steve Smith came through with 11 points with a perfect night of 3 for 3 at the free throw line. Guards Bruce Ballmer, Dan Lufkin, Howard Holt, and Robby Olsen accounted for 17 points as Ballmer bagged 7, Lufkin 6, and Holt and Olsen each made two free throws for two points each.

The Washington game marks the end of Cal's first conference series this season and the Bears came out the winner, winning two games and losing one. They split in Seattle winning the first contest by two points and losing the next night, 59-53.

Continuing his fantastic shooting and all-around great play, Charlie Perkins led the California freshman basketball team to a 68-60 victory over Sacramento City College Saturday night in Harmon Gym.



BIG MAN'S GAME . . . Centers Camden Wall, 6-11, and Clint Peoples (42); 6-9, battle in Saturday's California-Washington game.

The Daily Californian SPORTS

LOWELL HICKEY
Sports Editor

BILL ROWEN
Assistant Sports Editor



DRIVIN LAYUP . . . California's Dan Lufkin goes over the head of defender Henry Matthews in Saturday's Washington tilt.

Bear Nine Ties USF 6-6, Ditto With San Fernando 8-8

In 21 innings of baseball this weekend California could not squeak out a victory. With amazing consistency, the horsehiders provided sun-drenched fans with two unsatisfying ties to USF, 6-6, and San Fernando State, 8-8.

In both games Cal had big leads and in both very easily threw these margins away. In Friday's game against the Dons the Bears picked up two easy runs in the first, and by the eighth had a 5-1 lead.

USF caught the Bears napping as they converted sacrifices, walks, errors, and one single into five runs. Cal found another run to tie it 6-6 before darkness stopped the game.

The game with San Fernando was a carbon copy. The Bears' early 7-1 lead broke in the eighth. They came back to tie it in the ninth. The game was called after 12 innings.

Friday's game:

USF	000 000 150—6 4 5
Cal	200 010 210—6 7 4

Green, Burch (6), Eilers (7) and Courtney, Beasley (6), Evans, Nye (5), Sternberg (8), Wierbowski (9) and Ingebretson.

Announcements

BASKETBALL TICKETS

Student tickets for Saturday night's basketball game between the Bears and USC are now available at the Athletic Ticket Office. They are free with an athletic privilege card.

Saturday's game:

SFSC	001 012 031 000—8 14 4
Cal	043 000 001 000—8 6 7

Greenfield, Kovalik (3), Capka (8), Schmidt (11) and Czarke, Silverman (5), Phillips, Colton, Harrison (6), Wierbowski (10) and Diamond.

Weekend Scoreboard

Gymnasts Win; Boxers, Matmen Maul Tribe

It was victories number 45, 46, and 47 in a row as the mighty California gymnastic team, under the leadership of Coach Hal Frey, defeated San Fernando State, Sacramento City, and Los Angeles State colleges over the week-end.

The Cal still ring teams, perhaps the best in the nation, swept all three top places both Friday and Saturday nights. The still ring men are Rich Field, Steve Zahm and Rich Golden.

Friday night the Bears won over San Fernando Valley State college by a score of 84-44 before a home crowd in Harmon Gym. Besides winning the still rings competition, Field also won the side horse.

Saturday the Bears recorded victories 46 and 47 with a 99-29 rout of Sacramento and a 78-50 win over Los Angeles State. Paul Newman was one of the outstanding Cal men as he scored a 9:35 on the high bar.

WRESTLING

Despite beating Stanford 21-13

Friday night in Harmon Gym. Cal's wrestlers succumbed to a strong Cal Poly team 16-18 Saturday.

The Stanford results: 123—Walson (C) dec. Anderson (S), 5-2; 130—Sylvester (C) pinned Davis (S); 137—Siegel (C) pinned Smith (S); 147—Takemoto (C) pinned Bridgewater (S); 157—Kendall (S) pinned Barker (C); 167—Kay (S) dec. Kuhlman (C), 8-5; 177—Allen (S) pinned Killman (C); Hwt—Garamendi (C) dec. Duncan Ross (S), 14-5.

Cal Poly results: Walson (C) pinned Franklin (CP); 130—Teem (CP) pinned Sylvester (C); 137—Forfeit to Cal; 147—Takemoto (C) dec. Taberna (CP); 157—Crecheres (CP) dec. Barker (C); 167—Kuhlman (C) dec. Dillascrusta (CP); 177—Wool (CP) pinned Kleeman (C); Hwt.—Doupler (CP) dec. Garamendi (C).

BOXING

California's boxers defeated Stanford 6-3 Friday in Harmon

to scoring on two different occasions in the first half. One time prop Gary Bruce actually crossed the goal line with the ball, but he was ganged up on and could not touch the ball down.

Lloyd Reist scored Cal's three points by climaxing a 13-yard passing rush that went from John Barovetto to John Whyte to Reist. Field position making the try possible was gained by two beautiful kicks by Whyte and Steve Nesbitt.

But it was still UBC that was giving the appearance of being the more polished team and seven minutes into the second half the Canadians' dazzling passing rushes, which forced the game into Cal territory most of the

afternoon, finally paid off.

With the ball on the 18-yard line the Bears committed a major foul and Dave Howie tied the score with an 18-yard penalty kick.

Minutes later the Thunderbirds scored their first try of the day when C. Pentland recovered the ball over the goal after Peter Brown had gotten it there with a 20 yard dribble.

Down 6-3 the Bears responded marvelously under the pressure and the game all of a sudden was being played mostly in UBC territory.

Scrum half Stan Geel came within inches of tying the score when he crossed the goal, but couldn't touch the ball down.

Gym and by remaining undefeated paved the way to a league championship at the same time.

The Stanford ring results: 125—Forfeit to Cal; 132—Bell (C) and Oberzan (S) drew; 139—Corrigan (C) dec. Bob Miller (S); 147—Weiner (C) and Gaylord (S) drew; 156—Giuseffi (C) dec. Gans (S); 167—Rein (C) TKO'd Lippman (S); 178—Moore (C) dec. Winters (S); 178—Knapp and Konker drew; Hwt—Pettigrew (S) dec. Winter (C).

SWIMMING

Cal's varsity swimming team pulled an expected victory over UCLA (58-37) and went down to defeat to the nation's number one swim team, USC, (65-30) last weekend in Los Angeles.

Bear Grady Romine set a new Cal 100-yard freestyle record with a clocking of 50.9 at UCLA.

Cal winners at UCLA: 400-yard medley relay; (McCreary, Gage, Goode, Baker); 50 yd. free, first—Romine, 23.1, second—Kagan; 200 yd. free, second—Knight;

third—Teele; 200 yd. individual medley, second—McCreary, third—Ed Duncan; 200 yd. butterfly, first—Goode, 2:13.2, second—Darney; 100 yd. free, first—Romite, 50.9, second—Kagan; 200 yd. back, second—McCrary, third—Voorhees; 500 yd. free, second—Baird, third—Teele; 200 yd. breast, first—Gage, 2:28.3, second—Stanley; 400 yd. free relay, first, disqualified; diving, first—Rodrigo, second—Pletcher.

GOLF

The California golf team nipped Cal State 14-13 Friday in the first meet of the season.

The Bears' John Einhorn was the medalist with a 73 on the par-72 Mira Vista Country Club course.

FENCING

Last Saturday the fencing teams of UC Berkeley and UCLA met to display their skill at swordmanship. Cal won in saber 5-4 and epee 7-2 to show their superiority.

New Fund Serves 'Little Old Ladies'

Memorial Fund For Ugly Wazu

Altruistic individualists who have no special candidate in the Ugly Man contest now have an outlet for their generosity. They may contribute to the Wazu Memorial Fund.

Last year Wazu, a "black mongrel" and Alpha Epsilon Pi mascot, was one of the top three candidates going into the last day when he disappeared. At first the disappearance seemed a publicity stunt, but Wazu was never seen again.

According to Lou Bluestein, vice chairman of the Ugly Man contest, the Wazu fund will also serve "for little old ladies who don't think any of the candidates are ugly enough."

The 20 candidates are Dan Appleton, Joaquin Hall; Beatles, U.C. Photo Club; Norton Beatles, Norton and Ida Sprout Hall; Box, California Pelican; Ringo Beatle Byrne, Phi Delta Theta; C1392764, Priestley and Spens-Black Hall; Crunchy Munchy Man, Davidson Hall; Bill Ellsworth, Commuter-Independent Association.

Brutus Epsilon, III, Tau Kappa

U.C. PHOTO CLUB



BEATLE

YEAH, YEAH, YEAH . . . This is an artist's conception of the Photo Club's entry in the Ugly Man contest.

Epsilon; Paul Gomberg, Sherman Hall; Dan Grisot, Freeborn Hall; Je Palmer, Delta Gamma and Bowles Hall; Bob Price, Barrington

Hall; Ronald Quick, Masonic Club; Bruce M. Showner, Chateau de Longpre; Alden Dievers, Landscape Design Club; Lynn Sims,

Not Obscene, Ugly But Clean

"Make it ugly!" screams Jim Peterson.

Jim is promoting the Ugly Poster Contest, a promotion stunt for the Ugly Man Contest, which promotes the Beauty and Beast Ball, promoting Alpha Phi Omega, which promotes the ideal of service.

Jim will accept "uglies" until Friday in 105 Eshleman (now Moses) Hall.

The artist's concept of ugliness is limited to 20 by 30 inches and, adds Jim, "Keep it clean, not obscene."

An example of "ugliness" created by Alpha Phi Omega member Heil Hoffman is now on exhibit at North Gate. According to Neil, it depicts typical meals served at Unit II. It also quotes John Donne, "Get with child a mandrake root," because John Donne "was a romantic cynic."

Kappa Delta; Ringo Starr, Ehrman and Cunningham Halls; George Szabo, Hoyt Hall, and an unnamed candidate from International House.

USN Officer Applications

A U.S. naval reserve representative will conduct interviews and administer the Officer Qualification Test today through Friday in the Navy Van outside Wheeler Hall.

Seniors interested in attending classes at the Officer Candidate School at Newport, Rhode Island in the Summer and Fall of 1964 should apply now. Applicants should be between 19 and 27 and have or be receiving a BA degree within 9 months.

SONNY LISTON CASSIUS CLAY
CHAMPIONSHIP FIGHT
WORLD HEAVYWEIGHT CHAMPIONSHIP FIGHT
Large Screen Tues. Feb. 24, 1964
AT ALL THREE THEATRES!
FOX OAKLAND
PARAMOUNT
GRAND LAKE
Reserved and Unreserved Seats Now on Sale at the theatre of your choice! No Home TV

'City of the Dead' Adventure

The oldest shipwreck ever found is the subject of "3,000 Years Under the Sea," a color adventure film which will be shown at 4:30 and 8:15 p.m. today in Wheeler Auditorium.

The life and color of the Cyclades and Dodecanese, classic islands of the Aegean, and the discovery of a strange "City of the Dead" on a long-forgotten part of the Turkish coast, are shown in the film.

"3,000 Years Under the Sea" is sponsored by the Committee for Arts and Lectures and has a special music score of Aegean folk music and modern jazz.

Diving photographer and explorer, Stanton Waterman, will narrate the film in person.

Tickets for the matinee will be available at the door for 85 cents. Evening performance tickets are \$1. and are on sale at the C.A.L. and Student Union box offices.

This Week in Sports

TODAY
RUGBY—Varsity vs. UBC, 3:30 p.m., Memorial Stadium.
BASKETBALL—Varsity at Washington State, 8 p.m., KSFO (560).

TOMORROW
BASEBALL—Varsity at USF, 2:30 p.m.
BOXING—Varsity in Navy Invitational at Mare Island.

WEDNESDAY
TENNIS—Varsity in Northern California Intercollegiate at San Jose State through Saturday.

THURSDAY
BASEBALL—Varsity vs. USF, 3:15 p.m., at Edwards Field.

FRIDAY
BASEBALL—Varsity vs. San Jose State, 3:15 p.m., at Edwards Field.

GYMNASTICS—Varsity vs. SFS, 8 p.m., at Harmon Gym.
WRESTLING—Varsity vs. SJS, 7:30 p.m., at Harmon Gym.

SATURDAY
BASKETBALL—Varsity vs. USC, 8 p.m., Harmon Gym.
BASEBALL—Varsity vs. Fresno State, 2 p.m., Edwards Field.
BOXING—Varsity at Chico State, 8 p.m.

SWIMMING—Varsity vs. Stanford, 2 p.m., Harmon Gym.
RUGBY—Varsity at Stanford, 1:30 p.m.

CURRENT NOTES—MORE TO COME

Anthro 120
Bac 2
Chem 5 (1)
Econ 1a, 103b
Math 2b (2)
Hist 131

Music 27a
Poli Sci 1, 2, 100 (1), 100(2), 101, 118b
Psych 1a
Soc 109, 117
Zoo 10(1)

COMPLETE SEMESTER SETS

Anatomy 25
Anthro 1, 2b, 118
Arch 122
Art 18
Astro 1
Bac 2
Botany 1, 10
Bus Ad 18, 101, 118
Chem 1a, 1b, 8
Classics 10b
Econ 1a, 1b, 2, 113
Eng 103
English 1b, 30, 44b, 46a, 46b, 116, 117b, 117s, 125d, 125e, 130b, 130c, 152, 158b
French 39b
Genetics 10
Geog 1, 121b, 131

Geol 10
Hist 4b, 8b, 17b, 134b, 143c, 174b, 189b
Italian 39a
Linguistics 35
Math 1b, 3b, 16a
Music 27a, 27b
Paleo 1, 10
Philos 6a, 6b, 20a, 20b, 101
Physics 2a, 2b, 4a 10
Physio 1
Poli Sci 1, 2, 100, 101, 106, 120, 163
Psych 1a, 1b, 5, 100b, 136
Scandinavian 108
Soc 1, 30
Zoo 1a, 1b, 10, 113

lybate lecture notes
ESTABLISHED 1937

2440 Bancroft Way TH 3-8080
Campus Bancroft Building

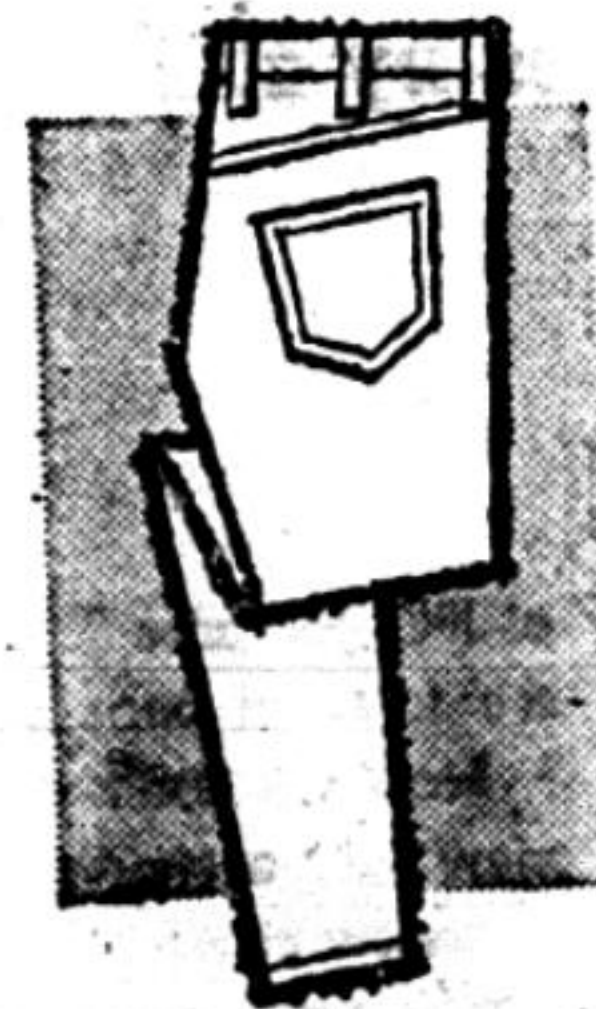
GRÖDINS RAMS HEAD

for Young Men of All Ages



Showing their cheerier side—

OUR AWNING STRIPE BUTTON-DOWN SHIRTS



Now sparking the traditional field: bolder, more strident multi-tones livening your favorite button-down shirts. In oxford? Of course. But get some, too, in rugged denim or fine broadcloth.

595

White Levis . . . 425

GRÖDINS

3350 Telegraph Ave.

Open Thurs. Nite til 9

WHERE GOOD TASTE ISN'T EXPENSIVE

8 a.m. calculus...late
rush...arrive...quiz...
Eng...read...write...
...correct...Psych...
psychotic...neurotic
Pavlov...bell...lunch
whew...pause



Bottled under the authority of The Coca-Cola Company by: BOTTLEERS NAME HERE
COCA-COLA BOTTLING COMPANY OF CALIFORNIA, OAKLAND, CALIF.

Specialists Begin Training For Native Development

Seventeen specialists representing Africa, Latin America and Asia have begun a four-month training program here designed to raise living standards in their countries.

Conducted by the University's Community Development Project and administered by University Extension, the program concentrates on basic community development principles applicable to varying conditions in different societies.

The specialists represent Kenya, Tanganyika, Northern and Southern Rhodesia, British Guiana, Panama and Korea.

Community Development Projects concentrate on public health,

agriculture, political and social science, anthropology and education. They emphasize voluntary participation and local decision-making so that grassroots democratic processes are instilled in project villages.

Through these methods the returning specialists and villagers will construct village schools, pure water supplies, better roads and more productive agricultural and marketing procedures.

The Community Development Project created five years ago by faculty members is now part of the University's Institute of International Studies. More than 100 community development specialists from 28 nations have received training.

CAMPUS CALENDAR

SEMINARS and COLLOQUIA

Scott Lynn, Dow Chemical Company, Pittsburg, California, will discuss "Simultaneous Polymerization and Diffusion in Laminar Flow," at 4:10 p.m. in 120 Latimer Hall.

Anatol Rapoport, Albert Wohlsetter, Morton Deutsch and Thom-

as C. Schelling will discuss "Problems of Disarmament and Security," at 10 p.m. on KQED-TV. Caspar Weinberger will moderate.

Dr. Marvin B. Siperstein, department of internal medicine, Southwestern Medical School, University of Texas, will speak on "Feedback Control of Cholesterol Biosynthesis," at 4 p.m. today in 102 Biochemistry and Virus Laboratory.

Heino Jogis, Civil and Architectural Engineering Department of Standard Oil, San Francisco, will discuss "The Civil Engineer in Refinery Products" at 3:30 p.m. today in 390 Hearst Mining Building. Refreshments will be served at 3 p.m. in the lobby of the Hearst Mining Building.

Professor Frederick C. Robbins, Nobel Laureate in Medicine, will discuss "Interferon and its Role in the Pathogenesis of Virus Infection" at 4:10 p.m. in 155 Donner Laboratory. Robbins is a guest scientist at Donner and Lawrence Radiation laboratories.

MUSIC

The University Repertory Chorus will perform Bach's "Passion According to St. Matthew" at 8:30 p.m. today in Hertz Hall. Edward Lawton will direct. Tickets are 50 cents.

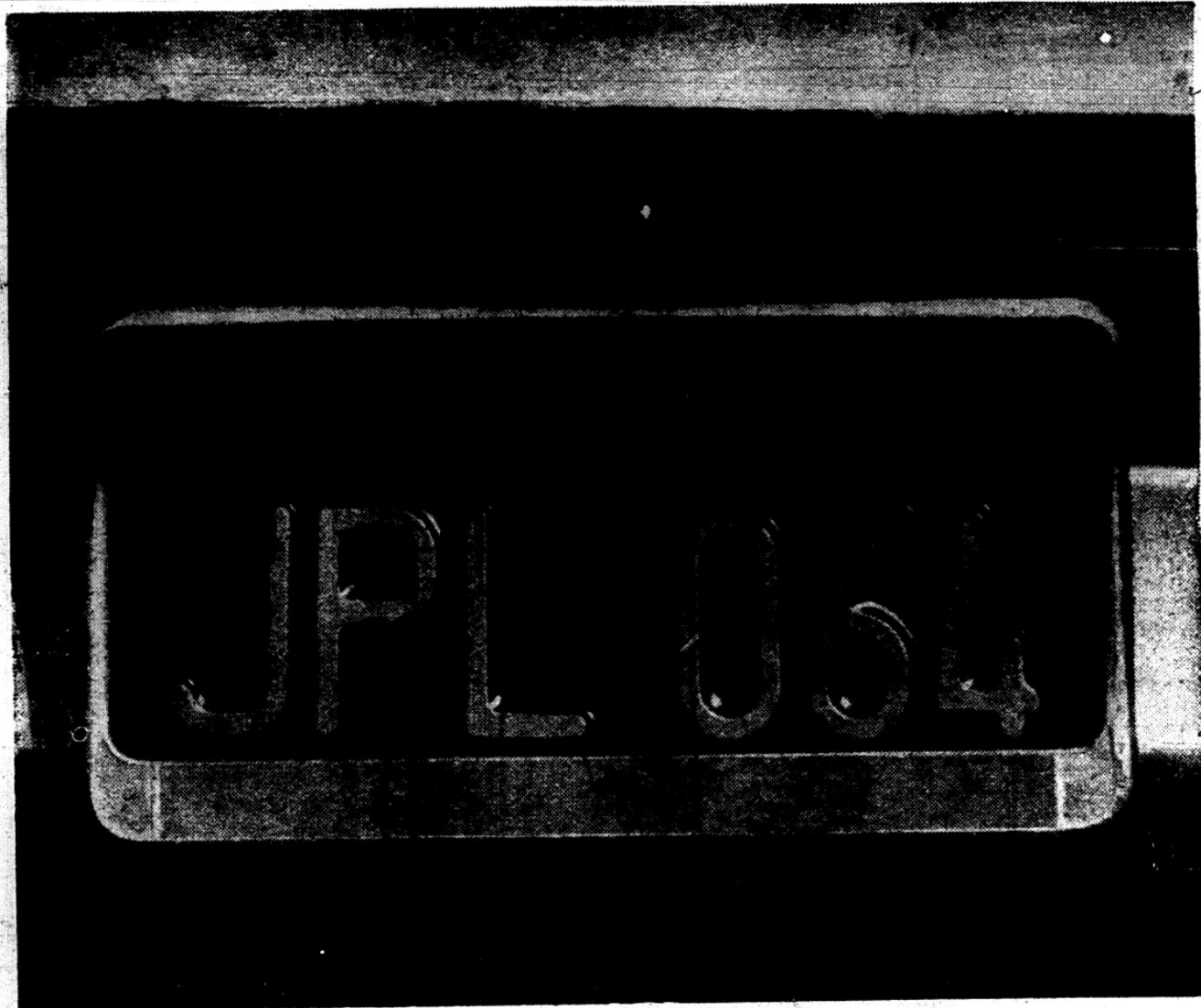
LECTURES

Richard Brinkmann, Professor of German Literature at the University of Tubingen, Germany, will speak on "Abstract Lyrics of Expressionism: End or Transformation of the Symbol?" at 8:15 p.m. in 145 Dwinelle Hall.

James Muilenburg, Old Testament and Semitic languages expert, will speak on "The Covenant Mediator in the Old Testament" at 4:15 p.m. today in 145 Dwinelle Hall.

FILMS

Stanton Waterman will describe the discovery and salvage of a late Bronze Age cargo ship in the adventure film "3,000 Years Under the Sea" at 4:30 and 8:15 p.m. today in Wheeler Auditorium. Admission to the matinee is 85 cents. Reserved seats only are available at \$1 for the evening performance.



He got the plates by chance

But he came to Caltech's Jet Propulsion Laboratory on purpose. How? When he was two months away from his Ph.D., the JPL interviewer came to his school. Our Ph.D.-to-be made it a point to see him. And he liked what he heard.

He heard how JPL scientists and engineers are designing spacecraft and instruments destined to drop in on our moon and planets. He heard about the many facilities housed

at JPL's 150-acre Pasadena complex. And he found out about the talented people he'd work with in space exploration.

Now we don't suggest that every Ph.D.-to-be we interview will come to JPL. But we do suggest that such an interview could be your opportunity of a lifetime.

JPL JET PROPULSION LABORATORY
4800 Oak Grove Drive, Pasadena, California

"An equal opportunity employer." Jet Propulsion Laboratory is operated by the California Institute of Technology for the National Aeronautics and Space Administration.

ON CAMPUS INTERVIEWS:

March 10 and 11, 1964
Contact University Placement Office for Appointment

Informed?

We don't think so!

—not if you're like so many students we've talked with lately. It's OK to be armed with conclusions, but a few basic facts from the original source is the American Way of evaluating our problems. Or as George Washington said, "Truth will ultimately prevail where there is pains taken to bring it to light."

So if your mind isn't yet "made up" and can tolerate a few more of the facts, visit THE AMERICAN OPINION LIBRARY, 904 San Pablo Ave., Albany, California, Tel. 524-4424, DISTRIBUTORS OF JOHN BIRCH SOCIETY MATERIALS.

President of Academic Senate Remembers the 'Little' University

BY PEGGY KRAUSE

"University service is the price I'm willing to pay for the privilege of teaching," James Cline, English professor and president of the Berkeley division of the academic senate, said in a recent interview.

In 1961 Cline was acting dean of the graduate division; from 1950 to 1961 he was associate dean of the graduate division; from 1942 to 1944 he was chairman of the English department; and from 1939 to 1942 was assistant dean of the college of letters and sciences.

One of the duties of the academic senate is to make recommendations on appointments, promotions, and—if necessary—demotions of faculty members. The recommendations are usually accepted by the Regents.

The recommendation process is extra effort for faculty members who participate, yet Cline believes the effort is necessary. "The faculty here is what it is because it has been evaluated by a jury of its peers," he explained.

Cline admits he is not typical; he has spent more time in extra University service than the ordinary faculty member. He became involved in administration work during the war, when many faculty members went into government service or the armed forces.

After the war there was an influx of new faculty, and Cline remained one of the administrative heads. "I got caught in a point in the history of the University when it was changing very rapidly," he said.

His one regret now is the size of the University. Looking back on his first years here he reminisced a bit. "I'm still hoping we can get back to the spirit of the 1920's. . . . We were small enough then so you had a much more comprehensive view of the University. I knew all the important faculty."

"A lot used to be settled over the luncheon table which now has to be settled at a large meeting," he continued.

"There was no radio to speak of and no TV. Berkeley was a little town with no traffic problems. We were a very innocent little community, lived innocently and thought important thoughts." The town had not yet attained world distinction and felt "free and easy."

"Do you know where Berkeley

got its name?" he asked, explaining it was named after philosopher Bishop William Berkeley. He quoted a specific passage, "Westward the course of empire takes its way," as the one he thought inspired Berkeley's founding fathers to name the town after the philosopher.

But he became practical, realizing Berkeley's size was one thing he could not change. "I'm a little helpless there, you can't make the University smaller. I just wish there were a little more concern with the University as a whole," He paused and added, "This may be just old age."

However, Cline does not believe that the professor-student relationship has been harmed by the University's growth. "I don't detect any loss of intimacy with my students," he said.

One aspect of the University has continued from the 1920's to the present—its friendliness. "I came here from the East in 1927 and was struck at once by the goodwill of the students. I've never been in a place where there is such a spirit of friendship between faculty and students."

Defending one aspect of the large university system—teacher's assistants—Cline said they teach sections to give them an opportunity to learn to teach as an apprentice, "not to get us out

of work. Let's not blink at the fact that they read a lot of papers through."

He stressed the fact that teacher's assistants are not employed in order to avoid professor-student contact. Teaching an English 1A section himself this semester, Cline participates in an example of a desirable professor-student relationship.

Cline and the teacher's assistant are both in the classroom at the same time; one teaches while the other sits back and listens, occasionally asking questions. "We show the class that most of the questions are somewhat unanswerable and broader than the student thinks," and that opinions of different authorities vary.

Freshmen "haven't acquired any undergraduate pedantry, ask pertinent questions, and expect categorical answers. They haven't become hardened," Cline said, explaining why he enjoys teaching freshmen.

Forestry Prof Cited For Work

John A. Zivnuska, professor of forestry, has been elected a Fellow of the Society of American Foresters for "outstanding achievement . . . of a fruitful character."

Zivnuska, an authority on long-term timber supply and demand relationships in the United States, recently directed studies on the future prospects of California wood industries.

A FREE CLASS IN THEOSOPHY

MAN: his place in the scheme of life.

Theosophy in the field of philosophy.

Shattuck Hotel 8 p.m., Feb. 24

Samuel H. Wylie, leader.

Placement Center

A man student with previous clerical experience and who can type 50 words per minute is needed to work either 8-12 noon or 1-5 p.m., Monday through Friday.

Summer Sales Positions: Junior or Senior to work with retail drug firms out of the Bay Area. Salary \$300 per month, plus company car and expenses.

MEMO

Baptist Student Union: 6:45 p.m., BSU Center, 2901 Channing. Seminar, Rev. Eric Rust, professor of theology, "Does Science Leave Room for God?"

Deutscher Verein: 7 p.m., Stevens Room, Student Union. Skit and refreshments.

Graduate Sociology Students: Room, 230 Wheeler. Professor Glock speaks on religion and prejudice in the U.S.

Hillel Foundation: 4:6 p.m., Hillel Foundation. Dr. Sachar interviews applicants to Jacob Hiat Institute of Brandeis.

Le Cercle Francais: 4 p.m., French Library at Dwinelle Hall. Spring program discussion.



FORMAL WEAR

SELIX

BERKELEY

Fine Fashions in Men's Formal Wear For Every Occasion

RENTALS → Convenient, economical rental.
SALES → One of America's largest selections.

• Summer Formals • Tuxedos • Full Dress
 • Culfways • Director Coats • Formal Accessories

Largest & finest stock in the West since 1906

SELIX

SALES • RENTALS

2121 SHATTUCK • TH 1-1312
 Open Thursday until 8:30 p.m.

SAN FRANCISCO • OAKLAND • BERKELEY • SAN MATEO
 PALO ALTO • SAN JOSE • SACRAMENTO



1. I've decided on the kind of job I want when I graduate.

Knowing you, I'd guess it to be something modest—like Secretary of State or President of GE.



2. I hadn't thought of those specifically. What I had in mind was a job where they give you a lot of assistants. I think that would be nice.

Very nice. Maybe they could start you off at a hundred grand a year.



3. Well, I did run an extremely successful Nickel-a-Pickle sale.

Don't forget to demand plenty of stock options.



4. You think maybe I should lower my sights a little.

I'm afraid to tell you what I think.



5. I'd be willing to settle for a vice-presidency.

Look—why don't you see if you can qualify for one of Equitable's executive training programs. The work is interesting, the pay is good. And if you prove you have the ability, you may very well end up with a title and a couple of assistants.

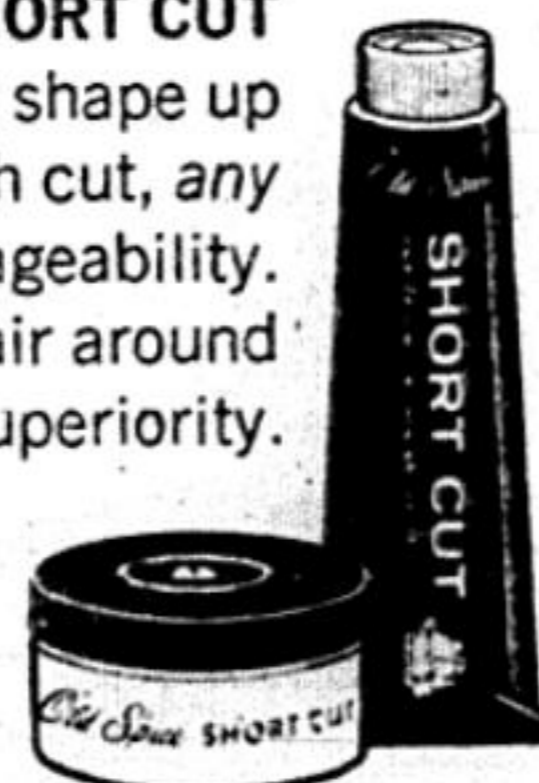


6. You really have a way of seeing through a problem.

Rooming with you has taught me a lot.

SUPERIORITY COMPLEX NOW SELLING FOR .50

So you're *not* a football hero, a big Brain, or a hot Hot-rodder. You can still be *top man* in the Girl Department! . . . if you let **SHORT CUT** take control of *your* top! It'll shape up the toughest crew cut, brush cut, *any* cut; give it life, body, manageability. Give you the best-looking hair around—and a feeling of natural superiority. So get with it! Get Old Spice **SHORT CUT** Hair Groom by Shulton . . . tube or jar, *only* .50 plus tax.



See your Placement Officer for the date Equitable's employment representative will be on campus. Or write to William E. Blevins, Employment Manager.

The EQUITABLE Life Assurance Society of the United States
 Home Office: 1285 Avenue of the Americas, New York, N.Y. 10019 © 1964

Civil Rights

The CORE picketing of Lucky's goes on. For almost a week patrons of the store have been subjected to harassment. The store has suffered heavily from the business losses created by the pickets. Why? Because CORE is of the opinion that Lucky's has not hired enough employees from one minority group: Negroes.

Apparently the heart of CORE's complaint is that out of 320 new employees hired by Lucky Stores in the past three months only 18 were Negroes. They claim this is proof of discrimination.

We are not in a position to evaluate this claim. There are several questions which must be answered before the truth of this claim can be determined:

1. How many persons applied for positions?
2. Of these applicants, how many were members of minority groups?
3. Of these, how many were Negroes?
4. How many positions were available?
5. What per cent of qualified employees were hired?
6. What per cent of qualified applicants of minority groups were employed?
7. What per cent of qualified Negro applicants were employed?

When all of these questions have been answered there will at least be some evidence upon which to base a judgment as to the accuracy of CORE's claim.

The management of Lucky's has estimated that the demonstrations are costing \$50 a day just in overtime pay and property destruction. They have made no estimate of the loss in business caused by normal aversion to such poor shopping conditions.

This is the price, the judgment, which CORE has rendered, having found Lucky Stores guilty of a violation of a moral law. That law is not in question; the judgment most certainly is.

CORE is not the final moral authority. They have no right to impose such a judgment without proof, substantive proof, by which they can demonstrate to all reasonable men that discrimination has, in fact, occurred, and has occurred in such measure to justify the plan of action they have set out upon.

Not only has CORE enacted a judgment against Lucky Stores, they have done so against all those who might shop there, by hindering them in their freedom to purchase where they will. Much as they may wish to assert that customers of Lucky Stores, by purchasing there, give tacit support to racial discrimination, we find it difficult, if not truly impossible, to accept.

CORE's willingness to demonstrate publicly against a great social evil is commendable; if more people had the courage of their convictions the racial problem would not exist today. CORE has a right to picket. They enjoy that right so long as they do not violate the law. Thus there is no legal force that can deter them, if such be their beliefs that only this form of action will suffice.

Demonstrations such as have taken place at Lucky's however, manifest not the spirit of peaceful resistance as much as they do of malevolence and ill-will. The form the protest has taken bespeaks ill of CORE in this area. One does not protest a wrong by throwing a tantrum in the streets. It is far better man who, knowing right is on his side, abstains from childlike behavior.

Art Gallery

The Regents are now considering the establishment of an art gallery of major proportions to be built on the University campus. At the present there is still a small doubt as to whether the gallery will in fact be built. The final determination will rest upon whether sufficient paintings to become a part of the permanent exhibit will be received.

A gallery of this nature would be a definite asset to the University community as well as to the public. The present galleries in San Francisco and Oakland, fine as they may be, are still woefully inadequate for the demand in the area.

The Regents have expressed the desire to go ahead with the project. One large donation has already been received. We hope other donations will be received soon and the Regents give final approval to the project.



What In The World



U.S. Education System A Map of Injustice

Robert M. Hutchins

The educational map of the United States is a checkerboard of injustice. Since we have no national policy, local prejudices and local resources largely determine the educational opportunities of the American child.

From the standpoint of education, there is no such thing as an American child. Every child is the child of the locality in which he happens to live.

Localities vary from very rich to miserably poor. Some, like California, are devoted to education. Some, like Massachusetts, have lost interest in the public schools.

The American child who wants a good elementary and secondary education has to be careful in selecting his place of birth. He should not permit himself to be born anywhere in the Deep South, even if he is white. On the other hand, Massachusetts is so rich that it will absent-mindedly spend a lot of money on his education.

In fact, it will spend more than twice as much on him as Mississippi would. The current expense per child in Massachusetts in 1962 was \$465. In Mississippi it was \$230.

Why should a Mississippi child be fined \$235 a year, with all the implied consequences for his human development for committing the crime of living in Mississippi?

The cry is that education has always been a matter for the states and local communities. In the first place, the statement is untrue. In the second place, even if it was true once, it can no longer be justified.

If we could force Mississippi to secede from the Union once more, and if we could refuse to permit immigration from it, then perhaps we could say that we had no more interest in its children than in those of any other backward country.

If we cannot take these protective measures, if Mississippians are to vote in national elections, sit in the national legislature and move in next door to us, then we are going to have to do something about education in Mississippi. We are going to have to do it in self-defense.

Mississippi has been trying. It has been trying almost twice as hard as Massachusetts and getting, in terms of money per child, less than half the results.

Of course, it may be said that Mississippi, the home of States Rights fanaticism, deserves its fate. But that seems a little hard on the children.

'Noa Noa'—A Confused History

"Noa Noa," by Paul Gauguin. Translated by Jonathan Griffin.

Reynal and Company. Illustrated. \$15.00.

BY VAN ESSAYAN

Noa Noa means "very fragrant" and is the name given by Gauguin to Tahiti. "Noa Noa" is also the culmination of Gauguin's exhaustive literary efforts; designed to make his painting more easily understood to an unresponsive Parisien audience.

Gauguin made his second voyage to the South Seas in 1894. He had decided to collaborate with a poet-friend, Charles Morice. By 1897, Morice had published first writings of the joint effort. Gauguin met the result with disdain and disillusionment.

Contrary to his objections, however, Morice published "Noa Noa" in 1901.

In 1910, Daniel de Monfried published portions of "Noa Noa" with some illustrations. When contrasted with the earlier, Morice-Gauguin edition, it was discovered to be "simpler, more full-bodied, and striking."

For many years, Monfried's edition was accepted, undisputed. There was, however, one more version of "Noa Noa." This was read by Jean Loize in 1951 and printed, for the first time, in English, in the edition review here.

Charles Morice had, in 1908, sold Gauguin's first manuscript, whose existence he had never mentioned. The writing was sketchy and not fully developed; Morice was to handle these details. Instead, he took the liberty of expanding, rewriting and transforming. Loize's research has provided us with a new Gauguin. Without the clever embellishments of Morice's crafty hand, Gauguin's writing comes on strong. His style is free and entirely spontaneous.

The legitimate, unexpurgated version of "Noa Noa" is both a noteworthy document and a beautiful, uninhibited piece of writing.

Review

LETTERS TO THE ICEBOX

Approval

To the Ice Box:

I was very pleased to read in the Daily Cal that the ASUC Senate approved the motion to negotiate the sale of Graphic Arts and to work towards the residency of the Athletic Department in the new Eshleman Hall adjacent to the Student Union. I feel that even though Graphic Arts has some value to the Associated Students the Athletic Department has a far greater value.

The primary factor in this feeling is the annual voluntary purchase of 11,000 athletic privilege cards by students and the direct participation in athletics of at least 1,100 others. This demonstrated interest of the students is a good indication of athletic's value to the campus. Furthermore, the athletic program, in both its public relations effects on the campus community in combination with many other student activities and its schedule effects on the social environment of the entire campus, merits as close a relationship as possible with the Associated Students. Nor do I see the move to Eshleman Hall as unfeasible, for the present utilization of the old cafeteria space is very poor and with good planning efficient and pleasant offices could easily be established there.

On the other hand, Graphic Arts, which presently carries on only 5 per cent of its business with students and which neither employs students nor is a student activity, seems much less vital to the student community. Many of its present services can now be obtained in better quality at outside sources, and were it to be sold to an outside interest it would have to meet these standards and still maintain reasonable prices or else run the risk of losing its business from the University as well as the students. Also, in the production of syllabi, the ASUC Store in the very past has published this item within its own facilities.

On these bases, therefore, I feel extremely gratified by our Senate's willingness to be self-critical in regards to the worth of the Graphic Arts enterprise and to act in the interest of the student association in encouraging a closer relation with the athletic program of the campus. I sincerely hope the Executive Director will be able to complete those negotiations necessary to carry out the Senate's wishes in these matters.

—Michael A. Cummings
Senior, Chemistry

Lucky Stores

To the Ice Box:

Because I hold civil rights to be the most pressing problem before us today, I have tried to do whatever I can to alleviate the injustices of bigotry. Such efforts have included lending sympathy to CORE and by joining in some of its picket lines. However, the time has come when re-evaluation of Campus CORE's actions is important and criticism is imperative.

The fact that Lucky Stores may be exercising prejudice in their hiring policies is no longer the central issue. CORE happens to believe that prejudice is involved, and thus, has every right to make its objections known. However, it does not have the right to interfere with the property of Lucky Stores, nor does it have the right to enter the building with the express purpose of physically disrupting business. In terms of direct actions against Lucky Stores, I believe that CORE has no right whatsoever to go beyond its rights to picket and request, either by print or by mouth, that people send their business elsewhere.

Until the time that CORE proves to me that it is willing to act in a manner worthy of the cause for which it is fighting, I shall have nothing more to do with it.

—Michael Patterson
English

LETTERS TO THE ICE BOX

The Senate View

To the Ice Box:

The sale of Graphic Arts is a complex issue, but you would never know it from Nancy Tolbert's report of Tuesday's Senate meeting. There are very good reasons for making this sale, but again you would never know it from Miss Tolbert's article. I have always found Miss Tolbert a very good reporter—good except in those cases when she has such a strong personal bias that it clouds the issue for her. At Tuesday night's Senate meeting there were five noticeably rabid fans of the opposition: the four State members who voted against the motion and our roving reporter, Nancy Tolbert. I have no real objection to Nancy's starry-eyed dedication to State ideals, but I do object to this being reported in the Daily Cal as straight news.

There were two main reasons for the sale of Graphic Arts with the possible substitution of the Department of Intercollegiate Athletics in its space. One was financial, the other dealing with student service. Financially, Nancy mentioned that Graphic Arts does over \$100,000 worth of business per year. As a matter of fact, it is closer to \$160,000 per year, but the implication that we are "giving away" a business of this volume is totally unjustified. Prices are so low that (with a payroll of \$12,000, overhead costs, supplies, etc.) the profit is less than \$200. Against this we have the fact that not only will the sale of the assets of Graphic Arts net revenue for the ASUC, but rent of \$10,000-\$15,000 per year from the Athletic Department will more than make up both this loss of revenue and any additional expenses from printing. In sum, financially the Association will be much better off from this transaction. I am simply amazed that Miss Tolbert did not feel these facts important enough to mention.

In terms of service to students Miss Tolbert again seemed to miss the essence of the majority opinion. The Senate felt that having the Department of Intercollegiate Athletics in the Student Center would be a great service to the students. 11,000 of whom voluntarily bought athletic privilege cards and 1,100 of whom directly participate in the athletic program here at Cal. This is against the 5 per cent of the Graphic Arts gross business done for individual students. Those who protest that Intercollegiate Athletics is not part of the ASUC or that we might just as well rent the space out to a Sather Gate merchant miss a very important point: that service to students and the greatest number thereof is a prime purpose of the ASUC. I am not surprised that State members (and only State members) opposed this motion, for State has shown throughout that they, in turning the ASUC to their private political ends, desire to neglect the services to the students provided by activities, by our programs, and now by athletics. As I say, this opposition does not surprise me, but I am surprised by the fact that in Miss Tolbert's "news article" none of the very good reasons—in terms of student service—for the sale of Graphic Arts were mentioned.

For me the idea of a campus newspaper has always been one involving great responsibilities as the only way a majority of students ever find out what is going on; the paper must exercise extreme diligence in presenting both sides of every question. Per-

haps this is too great a charge for students to handle—I know it has proven difficult for many in the past. Miss Tolbert I believe grappled with it, if at all, unsuccessfully. I am certainly not objecting to Miss Tolbert's right to form an opinion—this is, after all, a complex issue with two sides. What I do object to is the fact that by withholding one side of the story Miss Tolbert has denied to students the right which she holds most dear, that is, the right to examine both sides of a question and then to form an opinion based not upon ignorance, but upon knowledge. If Miss Tolbert can't handle this difficult assignment, then maybe we had better get someone else, but we must get fair reporting. The Senate deserves an unbiased report, the Department of Intercollegiate Athletics deserves it, and most important of all, the students who are paying for the newspaper deserve it.

Robert S. Draper
First Vice-President

Graphic Arts

To the Ice Box:

I would like to offer my support of the ASUC Senate's decision to sell Graphic Arts. The decision was based on philosophies which I feel are entirely applicable to the ASUC. Graphic Arts employs no students. Granted, it does provide a service to students, but it is entirely operated by professional help. Furthermore, approximately 50 per cent of its work is for the University, not for the ASUC or individual students. In fact, only about 5 per cent of the work done by Graphic Arts is for individual students. And a 2 per cent profit margin certainly does not provide the ASUC with any significant income.

The Senate's plan of negotiating with the Intercollegiate Athletic Department for the rental of space in New Eshleman Hall deserves student support also. Since the fall of 1960, when the Athletic Department was transferred from the ASUC to the University, there is no doubt that the ASUC has benefited financially. However, a student activity of the magnitude of athletics—approximately 12,500 students are directly or indirectly involved with athletics—

most assuredly warrants a very close relationship between the Athletic Department and the students who do take part in this activity. The separation which has grown between athletics and the students since 1960 has been very disappointing to many people. Remember, all the spirit groups associated with athletics are ASUC-sponsored! The desire to re-establish closer communication and cooperation between the ASUC and the Athletic Department could be greatly aided by the re-creation of a "living together" situation.

Admittedly, the sale of Graphic Arts, taken alone, may not appear reasonable since the business does provide a small profit and some service to the students. Comparing these two small attributes of Graphic Arts to the desirability of bringing the Athletic Department back into real contact with students, definitely leads me to support the latter as the best course of action for the ASUC. Consequently, I do not appreciate the forces who are trying to make this action of the ASUC Senate a political bonfire. Should we keep an enterprise whose utility and contributions to the ASUC are questionable, and separate the Athletic Department even further from the students by forcing it to move completely off campus? Or shall we do what is obviously in the best interest of the majority of students by providing—for a profit, I might add—a home to a major student activity, even if it is not operated by the ASUC? Let's wade through all the usual political slush and support the Senate's decision! It is the best one for the students and the Association.

—Charles H. Schaupp
Junior, Civil Engineering

Co-ops

To the Ice Box:

Mr. Bear's axe-grinding has become tiresome and I do not wish to further prolong the debate, but again he has misrepresented the facts.

Our kitchens are periodically (and voluntarily) closed down for a day or two during vacations or between semesters to allow routine maintenance, repainting and replacement of equipment. (Ever

try preparing a meal while standing on wet paint, Josh?) This is standard practice in all commercial kitchens and will eventually be necessary in the now new residence hall and dining commons kitchens.

Cloyne Court invites inspection of its kitchen by anyone with a less "high degree of emotional involvement . . ." than Mr. Bear has. If you come as the guest of a member you can even get a free meal. Our food is not exotic, low-calorie or just like mother used to make, but it is clean, wholesome and remarkably inexpensive (\$1.32/day for three meals).

Come see for yourself.

—Dick Palmer
President, Cloyne Court

CORE

To the Ice Box:

"We hold these truths to be self-evident: that man is endowed with certain inalienable rights . . ." The advancement of these rights is a goal of prime importance. It is good to bring abridgements of them out into the open where the offenders can be prosecuted by public opinion. But the manner in which CORE has attempted to do this has been damaging.

Most transitions are painful. The end of full Negro rights is good enough to be worth suffering for. But if the means of transition are sufficiently painful, many good people will resist the change to the ends. Rather than looking at the ends, they might attack the injustices of means that cause damage to private property and prevent people from doing their jobs, and they might attack the motives of the "true believers" who are picketing. As far as they

do this, the purposes of advancing the Negro and eliminating prejudice are defeated. Any action CORE takes should be weighed against the reaction it will cause.

—Bruce Jones,
Senior, Econ.

The Daily Californian welcomes letters from any member of the University community on any pertinent subject. Letters will be printed subject to the availability of space and the timeliness of the topic. We cannot guarantee publication of any letter.

To be acceptable letters must be typed, double-spaced, and signed with the writer's name and telephone number. No anonymous letters will be accepted.

Letters under 150 words in length will have a better chance of publication than long letters.

Authors of letters should bring them to the Daily Californian Editorial office, 12 Eshleman Hall, with proof of identity.

Barrett's Cycle and Electric
Motor Bikes and Scooters.
Bicycles and Elec. Repairing
Firestone Tires

Call and Delivery

673 Sycamore St., Oakland, 832-5366

JIM BARRETT

Discount to Cal Students

APPLIED RESEARCH LABORATORIES, INC.

Subsidiary of Bausch & Lomb Incorporated

GLENDALE, CALIFORNIA

Offers Professional Opportunities in
Non-Military Instrument Systems
for Spectrochemical Analysis

- Non-Military, but "Essential Activity"
- Aggressive Organization, Technically and Commercially
- Small Company Atmosphere
- Technically Oriented Management
- Challenging Assignments
- Opportunity for Professional Growth
- Company-supported Advanced Education
- Other Excellent Benefits

Degrees: BS & MS in EE, ME & Applied Physics;
and MBA with any of the foregoing

Register with Your College Placement Office for

Campus Interviews March 2, 1964

Or you may write us direct at

P.O. Box 1710, Glendale, California 91209

Attention: C. F. Hartman, Personnel Director



A 35% OFF SALE? NO!!

Vaughn's has established a permanent policy of giving to the students and faculty a 35% DISCOUNT on all merchandise all year 'round!

Due to our low overhead and buying power, which has enabled us to buy in volume in the specific field of Natural Shoulder Clothing, we are able to extend a saving to you, the students . . . a 35% REDUCTION!

Why not drop in and browse through our complete selection and wide variety of carefully selected New England style suits and sportswear?

We invite you to drop in and take advantage of these savings designed for you.

Show student or faculty identification for permanent discount card.

VAUGHN'S Student Clothing Union

2333 TELEGRAPH AVE. BERKELEY

THURS. EVENINGS 'TIL 9:00

TH 8-1906

THE DAILY CALIFORNIAN

Published daily except Saturday and Sunday and University Holidays during the University year by the Associated Students of the University of California. Entered as second class matter on March 1, 1961, in the Post Office at Berkeley, California, under the act of March 3, 1879. Subscription price \$5.00 a year; \$2.50 a semester.

Dorm Rep. Elections Invalidated; Salamando - 'Not Able to Open All Polls'

The Men's Dorm Rep elections —held in the dorms for the first time Thursday and Friday—turned into a farrago of confusion, and everything was invalidated.

"We were not able to open all the polls," Alex Salamando, Elections Council Chairman, said, "and rather than risk getting complaints we decided to start all over."

Some of the poll workers did not appear and ballots never ar-

rived at some of the polling places, Salamando said. Voting did take place in Bowles, Smyth, and Unit I.

Salamando added that the Elections Council considered allowing the election to count where voting took place. However, this would be unfair to those who had already voted since they couldn't change their votes in case of a further development over the weekend, he said.

The Council decided to hold the primary last Friday and continue it today. If a run-off is necessary it will be held on Wednesday and Thursday.

Royalty Comes to Campus

A royal visit, a lute concert, and exhibits of folk and modern art will keynote the University's celebration of Sweden Week.

H. R. H. Prince Bertil of Sweden will highlight the events of the week with his tour of the campus and reception at 3:45 p.m. Thursday in Kroeber Hall.

He will arrive at 3:30 p.m., first inspecting the Swedish books and

photographs on display at the Main Library from Wednesday through March 20, and then proceeding to the lobby near Lowie Museum of Anthropology in Kroeber Hall.

The Museum will display samples of Swedish ethnic costumes modeled by small dolls through March.

The Prince will be joined at the reception by Consul-General Per Anger.

Anger and Eric C. Bellquist, professor of political science and Assistant Dean of Students, will announce the first award of the Fritz O. Fernstrom Fellowship to bring Swedish students to the University campuses.

This week students can learn about Swedish folk arts and crafts from experts.

Albert Eskerod, head of the Ethnological department of the Nordic Museum at Stockholm will discuss folk art forms in a free lecture at 8:15 p.m. in 155 Dwinelle Hall.

The famous Swedish design will be discussed at 8:15 p.m. in 145 Dwinelle Hall Tuesday by Miss Tyra Lundgren, a designer and ceramist.

An unusual evening of lute music, poetry, and pictures will be presented 8:15 p.m. Wednes-

day in 145 Dwinelle Hall.

Carl J. Engblom, Director of the Augustana Swedish Institute in Illinois, will sing some of the poem-songs of Carl Michael Bellman, accompanying himself on the lute.

Bellman is considered an immortal for both his poetry and his mastery of the difficult lute.

The three lectures on Swedish culture are sponsored by the ASUC Committee for Arts and Lectures.

"More beautiful things for everyday use," the now-famous motto of Swedish artisans, will be seen clearly in the Student Union display of Steuben crystal glass.

The collection is on loan from the Royal Consulate General of Sweden in San Francisco.

The glass is made in a few large factories and about 40 small ones in Sweden.

The University's celebration of Sweden Week is in part an intellectual response to the more commercially-oriented "Meet Modern Sweden" activities in San Francisco.

San Francisco will feature Swedish technology and art in the San Francisco Museum of Art, the Palace of the Legion of Merit, the de Young Museum, and the California Academy of Sciences.

Bike Reg. Held, 425 Register 1575 To Go

Student bicycle registration, which was held on campus, attracted more than 425 bicycles, the Berkeley Police Department said last week.

Officer Warren Young, head of the Bicycle Detail, said this year's campus registration drive was the most successful so far. Last year, 303 bicycles were registered, but only three appeared the year before.

Young also said that although the program was successful, 425 is only a small proportion of the estimated 2000 bicycles on the campus.

"Those bicycles which have not been licensed are liable to be ticketed," he said, "and those who ignore the citations may see the inside of our Municipal Court."

However, he also emphasized the benefits of bicycle licensing. Of the licensed bikes stolen in Berkeley, 90 per cent are recovered, while only 40 per cent of stolen unlicensed bicycles are found.

Although the registration service will not be available on campus any more this year, Young said his office in the Berkeley City Hall is open during business hours throughout the year.

Placement Center

A large national firm has sales positions in 7 different regions in U.S. Excellent training, salary. Must have driver's license.

A man student with ability to type 60 words per minute is needed to work a forty hour week, Monday through Friday job, after 1 p.m.

this week only! shampoo, haircut & set... all for

\$5

Regularly 7.50
Beauty Today...
Pay Later with Super/Charge!



ROOS AINS
FASHIONAIRE COIFFEURS

CALIFORNIA SHOP
2530 BANCROFT WAY
THORNWALL 3-6241

ASK ME!

NOW MUCH YOU MAY SAVE ON YOUR CAR INSURANCE WITH STATE FARM!



Dave Schiller
1527 Shattuck
841-6171
Evenings 254-5072



ENGINEERING OPPORTUNITIES

for Seniors and Graduates in **MECHANICAL, AERONAUTICAL, CHEMICAL, ELECTRICAL, NUCLEAR, and METALLURGICAL ENGINEERING**

ENGINEERING MECHANICS APPLIED MATHEMATICS PHYSICS and ENGINEERING PHYSICS

CAMPUS INTERVIEWS

THURS., FRI., FEB. 27, 28

Appointments should be made in advance through your College Placement Office

Pratt & Whitney Aircraft



An Equal Opportunity Employer

SPECIALISTS IN POWER... POWER FOR PROPULSION—POWER FOR AUXILIARY SYSTEMS. CURRENT UTILIZATIONS INCLUDE AIRCRAFT, MISSILES, SPACE VEHICLES, MARINE AND INDUSTRIAL APPLICATIONS.

Traditional Ideologies

Edited Folklore Possibly Chinese Propaganda Tactic

Wolfgang Eberhard, professor of sociology, held a seminar on the use of traditional Chinese folklore in Communist propaganda Thursday at the University YWCA.

The professor said that most propaganda can be seen in archeology, art, and folk literature. In fact, he said, only a minute part of local propaganda is in the form of forced ideas.

Professor Eberhard stated that only 10 per cent of all existing Chinese folklore is printed by the Communists in Red China.

The tactics used by the Red Chinese are to leave unpublished those folk dramas and folk tales which have a religious message, and talk about a diety, those which concern an emperor and how he helps the people, and those which make "heroes" of young scholars.

Folklore running contrary to

the traditions of pre-Communist China are the ones which are published. These include stories of adolescent rebellion to fixed marriages, superiority of women over men, and the incapacities and wrath of emperors.

Stories of a poor man's plight and the nationalism of a country at war are also kept.

Besides printing only those stories which are favorable to them, the Communists also change or "edit" those which are popular and may not quite fit into their way of thinking. This is verified by comparing the stories to those found by reliable collectors of Chinese folklore.

According to the professor, folklore has always been used to express ideologies, either ultra right or ultra left. It seems that now traditional Chinese folklore is altered to further the cause of the Communists in Red China.

TRAVEL WITH A PURPOSE

July 2 - August 31, 1964

Use your education program in search of man's past

NEG Archaeological seminar

Excavate Ancient Sites in

EGYPT, JORDAN, ISRAEL

Participate in

ARCHAEOLOGICAL EXCAVATION

ACADEMIC PROGRAM

Archaeology of Palestine

Historical Geography of Palestine

Class in Hebrew

Courses are accredited by Associate Institutions

For further information, please write to Institute for Mediterranean Studies, 2054 University Avenue, Room 312, Berkeley, California, or contact your Local Travel Agent.

Schuh Awarded Fellowship \$1,200 Vera Christie Prize

Allen John Schuh, a candidate for Ph.D. in industrial psychology here, was recently awarded the Western College Placement Association's Vera Christie \$1,200 Graduate Fellowship at the Association's Annual Conference in Portland.

Schuh was a teaching assistant at the UCLA Engineering and Extension Division, a research assistant at the Western Behavioral Sciences Institute, and currently is a research assistant at the Institute of Industrial Relations.

Dancing Class Every Saturday

Dancing classes will be given from 9 a.m. to midnight every second and fourth Saturday nights in the Palm Room of the Berkeley YMCA, 2001 Alston Way.

Men and women who enjoy dancing and meeting new friends are invited.

New White Mountain 'Copter To Ease Mono County Travel

A new helicopter for the University's White Mountain Research Station will arrive at 10:30 a.m. tomorrow morning at Kleeberger Field.

The copter, manned by full-time pilot Leonard A. Johnson, will facilitate transportation to

the Mono County research projects and will be a safeguard for workers at the remote laboratories in case of emergency.

The three-place helicopter is equipped with turbosuperchargers, which enable it to fly up to 20,000 feet altitude.

Daily Cal Want Ads

Apartment to Share

FEMALE ANTIPO SENIOR transfer wants room-mate and, similar apt. 23, or working. Very livable, fully equipped home. Sundeck, 3 bedrooms, fireplace. Private entrance bathroom-bedroom. Black above Euclid Rose garden. Easy transport. Many benefits. Approx. \$90, utilities included. LA 5-3235 Laura. 2-26-M

WANTED: QUIET, RESPONSIBLE male student to share 2 bedr. 2 bath apartment with same. Fully furnished, large swimming pool, garage. 526-8978. 3-6-D

MAN SHARE HEATED pool, furnished (modern), free parking, kitchen utensils, coin washer, dryer, approx \$60 month. 5248 Claremont #236, TH 8-6163, 3-5:00; otherwise 658-7371. John Johnson. 2-24-J

APPRECIATE CHARMING ENVIRONMENT? Quiet 2 bed, apt. with pool. Graciously furnished; own room. Female. \$62.50. LA 4-8975. 2-25-C

ROOMMATE WANTED: MALE. \$42. Furnished 2 story house. Two need a third. 845-4451. 2-24-Mc

'ROOMMATE WANTED' prefer grad. or upper division. Close to campus, on College. \$55. Call 845-5444. 2-24-W

TWO GIRLS WANT one to share modern, furnished two bedroom apartment. \$45. 2314 Parker TH 3-7536. 2-24-S

ONE GIRL WANTED to share apartment with 2 others four block campus. \$41.60. TH 1-9985. 2-25-G

MALE SHARE QUIET furnished Northside apartment with two, 4 1/2 rooms, \$46.50. Three minutes campus. 843-4005. 2-26-L

SHARE TWO BEDROOM furnished with upper division or grad. girl. Fireplace, parking, sundeck. 849-2675 evenings. 2-26-J

MALE ROOMMATE WANTED. 2736 Haste, #3, W/3 others, \$35 includes utilities. No lease. Cutler, 849-2470. 2-26-C

2 FEMALES WITH house need one more, 23-27. Own room. Yard. Fireplace. \$40 plus utilities. Call Myrna 527-1243. 2-27-B

FEMALE SENIOR WISHES to share large furnished studio apt. close to campus. After 7, 843-2890. 2-28-B

WANTED: TWO FEMALE roommates for two bedroom, modern, furnished apt. 2404 Falton, \$55 month. 841-9395. 2-25-F

NEED ONE GIRL share apt. with 3 others, 1/2 block campus. \$38. 1856 Spruce #7. 843-6639. 2-28-W

PREVIEW Now Leasing 2606 BENVENU

One bedroom apts. from \$125.
Two bedroom two baths from \$200.

• dishwashers • disposals • stoves
• refrigerators • patios • sundecks
• covered garage • wall to wall carpets • drapes • elevator.

TH 8-3200 LA 4-4098

2124 PARKER: 2 bedr. 2 bath apartment. Accommodates 4. Excellent soundproofing. Top furniture, carpeting, draperies. Large pool; dishwasher; storage; garage. Close campus. East of Shattuck location. \$55 each (\$220 for four). 526-5998. 3-6-D

BISHOP PARKER APARTMENTS, 2 bed, 2 bath, pool, dishwasher, disposal, furnished, 2124 Parker, apt. 102. TH 1-3614. 2-24-N

JUNE 15 THRU Aug. 2-3 persons, large rooms, brand new kitchen. \$140 month. 845-5458 after 6. 2-25-J

MANAGER FOR APT. building; 2-4. Male grad student. TH 3-0164. 3-4-D

NEW ONE BEDROOM furnished. Four blocks campus. Will accommodate three. 2534 Benvenue. 841-1405 after 3:30. 2-24-S

1 BEDROOM \$150 month. 2-bedroom \$185, water, garbage included. 2540 Regent Apt. 9. 848-1640. 2-24-S

2416 ROOSEVELT: new 3-room furnished, \$100-\$115. 1821 Addison: 2 bedroom \$140, (utilities). 843-9652. 2-25-L

FURNISHED 2 BED. W/W carpets, balcony, large closets, \$190. Lease to May 31. 1925 Delaware. 3-4-T

ONE BEDROOM UNFURNISHED apt. equipped kitchen, \$83 per month. 1931 Dwight Way. 841-8165. 2-26-R

A MAGNIFICENT STUDIO in a Gothic brick building. Ample spacious. \$75-\$105. Mr. Dunn, 845-1421. 3-18-K

BEAUTIFULLY FURNISHED MODERN one bedroom apt. Terrace and electric kitchen. 2210 Ward apt. D. Phone 845-5008. 2-26-J

HOUSEKEEPING: CAMPUS THREE blocks. Private bath, entrance, refrigerator, \$55. Army bunks for two freshmen \$32.50 each. Sleeping room \$35. TH 8-5685. 2-26-B

LUXURY APT. WITH excellent view, drive in garage. Overbills for \$100. (\$20 cheaper than lease). 849-0978. 2-26-P

ONE BEDROOM FURNISHED facing north side campus. All new furniture. Rent \$120 to \$135. 848-0984. 2-27-P

ATTRACTIVE ONE BEDROOM unfurnished, quiet, four blocks campus, carpets, disposal, parking, elevator. \$125. 848-6550. 3-5-G

ATTRACTIVE LARGE ONE bedroom, unfurnished near transportation, shopping center. Quiet. \$88.50, water, garbage. 569-6773. 2-27-V

CLAREMONT, AMPLE PARKING, new one bedroom, distinctively furnished, large desk, \$95, \$110, professional adults. 653-8741. 3-20-W

Rooms

SINGLE FURNISHED ROOM near U.C., Bay view, private washstand. Male teacher or graduate student, non-smoker. Inquire Euclid Book Store, 1879 Euclid, TH 8-7952. Residence TH 8-0573. 3-6-Mc

AMPLE ROOMS FOR men. Kitchen privileges, board near by if desired. 2 blocks south U.C. 2401 Bowditch. TH 3-2461, TH 1-4686. TH 5-4832. 3-9-L

ATTRACTIVE ROOM, CHOICE location in quiet private home for graduate student or teacher. 524-5815. 2-25-P

2 BLOCKS NORTH campus. Man, share modern sunny redecorated. Maid kitchen, work possible. 2669 Le Conte. TH 8-1845. 2-25-M

FURNISHED ROOM LARGE and sunny, 10 min. walk to campus. \$54. Share all electric kitchen, washer, dryer, bathroom. TH 8-4489 after 3:00 p.m. 2-24-V

FURNISHED ROOM, WHOLE house privileges. Near campus. \$45 month including utilities. Call 843-9398 evenings. 2-24-D

REGENT CORNER ALCATRAZ, sunny, quiet, pleasant, male student, with young bilingual couple. \$35 monthly. 653-4316. 2-26-B

Miscellaneous Rentals

SKI HOUSE NEAR Heavenly Valley available weekends, sleeps six comfortably. Inquire evenings 1445 Euclid. 2-28-F

Room and Board

U.C. RESIDENCE CLUB. \$90 and up. Single or double with private bath, daily maid service, TV, 24 hour desk service. Special semester rates for students. 1/2 block from campus. Coed. 2045 University Ave. 841-1163. 2-25-L

INTER-FAITH COED Residence Fellowships. 3 blocks south U.C. Students, employed. Room, all meals, excellent food. TH 3-2461, if no answer TH 1-4686, TH 5-4832. 3-9-L

LOOK WHAT'S COOKING. Pantry style, home cooked meals scheduled for students. Baptist Student Center, 843-1183. 2-26-B

ROOM AND BOARD for men \$80 month. Free washer, dryer, TV etc. Close campus. 845-9078. 2-24-A

ROOM AND BOARD AT Barrington available. \$65.50 month. Member of the U.S.C.A. TH 3-6551. 3-2-U

WOMAN STUDENT: SUB-LEASE large sunny double. Room and Board, \$350. from \$475. 1 block campus. Call Bebe Queary. 845-9505. 2-25-P

MAN, 13 MEALS/WEEK, roommate \$90/month. 2411 Bowditch. TH 5-9126. Bob Van Dyck. 2-25-V

SINGLE ROOM & BOARD 2528 Benvenue. \$325 semester. Call George Curtin 845-9471, Charis Boddie 849-2896. 3-6-B

Miscellaneous for Sale

ATTN: FOREIGN STUDENTS. Complete line of new 220 volt, 50 cycle General Electric appliances for use in your country. ALLIED EXPORT DISTRIBUTORS, LO 9-7057. 5-22-A

STAMP COLLECTOR WILL exchange or buy First Day Covers & Stamps (U.S. and Foreign). 841-9660 after 6 p.m. 2-28-Q

TOP QUALITY EUROPEAN Hickory Multilaminated Skis. Privately imported. (Like Kastle). Value \$80, only \$29.95. TH 5-2920. 4-3-B

GRETSCHE ELECTRIC GUITAR. Perfect condition. Hard-shell case. \$260. TH 1-3504. 2-24-G

SKIS, SKIING EQUIPMENT, Rucksack, Rock Climbing equipment, Guitar. Phone anytime LA 5-0883. 2-24-C

FURNISHING AN APARTMENT OR house? We are selling ours, the baby's too. Call TH 3-7400. 2-26-K

Situations Wanted

CHIEF FIFTEEN OFFSET Multi T 51 Color specialist. 12 years experience in line. Box L, 101 Eshleman. 2-26-M

MASCOT: EXPERIENCED, RELIABLE pelican desires part time post. Contact Ishmael, Jacob, or Alice. WE 6-1234. 2-25-P

Lost and Found

LOST AND FOUND is located in Room 2, Sprout Hall. Hours: 12 noon to 4 p.m. Mon. through Friday.

LOST: FULL GROWN black Labrador male, vicinity "Hinks." \$25 reward. LA 4-0333. 2-24-W

SPIRAL NOTE BOOK lost on College Ave. with Engineering notes. Call 848-9726. 2-24-M

Personals

REGULAR GIRL DANCE partner (social) needed to improve skills. Hugo. TH 8-2618. 2-24-V

PUT YOUR MONEY on the Best! Dan Appleton is uglier than thou! 3-6-G

Auto Insurance

AUTO, FIRE, SCOOTER, MOTORCYCLE. All your insurance needs in one convenient stop. 1688 Shattuck. 841-2833. R-3-18-T

ALL DRIVERS—LOWEST possible rates, single/married. Ask for Peter Siewert. Days TE-4-7100, Evenings OL 5-0377. R-3-11-S

NON-DRINKERS ONLY. GET the best for less. Preferred Risk Mutual Insurance Co. TH 3-4711. Open evenings. 3-4-N

GOOD DRIVERS, PHONE me for rates. Save money on auto insurance. Also scooters \$20 each 6 months. Motorcycles \$28 each 6 months. PL-PD. Farmers Insurance Group, 1887 Solano "near Oaks Theatre." 527-2141. R-3-11-C

Tutoring

TUTORING SERVICE BERKELEY SCHOLAR'S AID

Effective tutoring in more than 300 courses: math, physics, chem., stat., econ., bus. adm., history, 8 languages, music, English, composition. Training for term papers, etc. Fair rates. Call LA 5-4496 for immediate service. R-3-18-L

TUTORING FOR MEN IN ANY lower division mathematics or physics. Esten Buck (MA '30). 2424 Channing Way. TH 8-3346, 7 to 7:30 p.m. Rates reasonable. R-3-6-B

FRENCH, ITALIAN, GERMAN, SPANISH COACHING, experienced tutor. Course exams. M.A., Ph.D., translations. 3 minutes Dwinelle. TH 3-5158. 5-22-S

RUSSIAN BY NATIVE speaker retired instructor at Cal. TH 5-7461. 5-22-P

TUTORING: PHYSICS 2A, 2B, 10. Chem 5. Elementary German. Near campus or in own home. TH 8-1649. 2-26-L

GRADUATE ECON. (MA '63) will exchange tutoring, babysitting, for refresher driving lessons, your car. 845-8367 evenings. 2-24-G

EXPERT TUTORING IN Freshman English Composition; TH 1-6905. 2-28-G

House For Rent

VERY CLEAN 2-bedroom furnished house. 6 blocks campus. 4 students \$50 each. TH 1-2455. 3-3-17-G

Board

EXCELLENT BOARD. WOMEN students. Two meals six days week. Breakfast Sunday. \$50 month. 2430 Piedmont. 3-2-T

Miscellaneous Services

SHOESHINE! DON'T go off campus—see Jim in the Student Center, between the Bowling Alley and the Barbershop. 12-13

ALTERATIONS BY EXPERIENCED dressmaker. Ladies' apparel. Convenient North campus location. Reasonable rates. Phone 849-0371, 527-0241. 3-2-S

AUTO DRIVING INSTRUCTION. Private lessons. Patient, professional instructors. Dual controls. Daytime, evenings, Saturdays. Convenient pickup service. Berkeley Driving School. LA 4-5323. R-3-2-B

HAIRCUTS BY APPOINTMENT. TITO MORENO. Formerly of Sather Gate Barbers. Now in the ASUC Barbershop. Student Union. Tel. 845-9024. 12-13-M

DRESSMAKING, ALTERATIONS, REPAIRS. Original designs in casual and evening wear. Prices reasonable. Call TE 6-2199. 2-28-B

CLASSICAL GUITAR INSTRUCTION, James Baron. Concert technique. Beginning and advanced. Home 527-2270, message service 845-5224. 3-10-B

NEW C GALLERY 2109 Shattuck. 848-9210. Specializing Original Paintings by Old Masters. OPEN 24 hours. 2-26-C

CLASSIC GUITAR

SCHOOL OF TARREGA-SEGOVIA.

Beginners, Intermediate, advanced.

Gerard Schoon — 845-5224 3-4-S

Typing

EXPERT TYPING. PAPERS, theses, dissertations. Reasonable rates. Grace O'Connell, 780 Vincente, LA 6-3043. R-3-20-D

FOR BEAUTIFUL ACCURATE professional typing—math, sciences, languages, arts-dissertations, manuscripts. Carole Smith, LA 4-8105. R-3-11-S

TYPING: EXPERIENCED, FAST. 35c/page. Pickup and delivery. Rush jobs accepted. Call Jean Warner, 526-9732. R-3-12-W

TERM PAPERS, THESES, manuscripts. TH 3-2289, evenings and weekends. R-2-26-R

TYPING (ELECTRIC), PROMPT service. Theses, term papers, manuscripts. Mrs. Corso LA 6-0333 R-2-28-C

TYPING TERM PAPERS, theses, dissertations. Experienced. Near campus. No delay. 849-1508. R-3-9-T

NEED EXPERIENCED TYPIST? Theses, term papers done accurately. Inexpensively. on electric machine. LA 5-3333, Mrs. Breazeale. R-3-19-B

TYPING—ALL TYPES. Convenient Berkeley location. 843-3175. 2-25-R

EXPERT TYPING. BERKELEY. Reasonable rates. Call before 8:30 p.m. Mrs. Panerio 843-5278, Mrs. Severy 843-6672. 3-3-P

CAMPUS TYPING SERVICE

2521 Durant Avenue

Theses our specialty. Also manuscripts, briefs, ditto masters, duplicating. Prompt, accurate, dictating machine—you dictate, we transcribe. Editing. TH 5-8980. Mrs. Parra. R-3-5-P

TERM PAPERS AND THESES. 1939 Stuart. TH 8-1778. R-3-9-R

FOR ACCURATE TYPING on electric Pica-term papers, theses, manuscripts. Call Mrs. McCroskey. LA 6-6159. 2-26-Mc

FYBATE PRINTING SERVICE

2440 Bancroft — TH 3-8080

Typing — Mimeographing — Printing
Photocopying — Layout — Editing — Binding
IBM electric "Executive" and elite
Offset press — Mimeograph R-2-28-F

TYPING: THESES AND TERM PAPERS. Experienced. TH 3-4745. R-3-10-M

TYPING: ACCURATE, PROMPT service. Reasonable rates. 848-7748. R-2-28-O

ELECTRIC TYPEWRITING BY professional. Over night service. 30c per page up. 849-1303. Save this ad. 2-25-B

GRAPHS, CHARTS, ILLUSTRATIONS for manuscripts, theses, term papers etc. Call 527-1726. 2-27-G

TYPING TERM PAPERS: Call 845-8152 3-13-S

TYPIST: EXPERIENCED. 35c page. Call Pat Urton at 652-6070. 3-20-U

Autos For Sale

1957 CHEVY. 6 Cyl. automatic. Good condition. \$475/offer. See Steve's Garage, 2170 Dwight. 2-28-C

1956 FORD VICTORIA. Black/White, R/H, automatic. Excellent condition. \$350. 848-8201. 2-28-B

1958 MG-A. New red paint, maintenance record. A-1 throughout. \$1,050. TH 8-4341. 2-28-C

1956 VOLKSWAGEN, GOOD condition. \$635. 843-2441 after 6. 2-28-T

BUICK CONVERTIBLE ROADMASTER 1952. Good tires, top, leather seats, power steering, windows etc. Perfect condition. Excellent buy at \$250. See 825 Sutter S.F. Bicker, TU 5-9955. 2-28-B

CORVAIR 1961 coupe, stick \$950.
CORVAIR 1961 4 dr., stick \$985.
FALCON 1961 wagon, stick \$1095.
FALCON 1961 Futura automatic \$1295.
FALCON 1962 Tudor automatic \$1295.
PORSCHE 1961 Super 90 coupe \$2995.
RAMBLER 1960 wagon overdrive \$795.
RAMBLER 1961 2-dr. sedan, overdrive \$650.
VOLKSWAGEN 1960 sedan, radio \$350.
VALIANT 1960 wagon, 9 Pass. \$350.
VALIANT 1960 wagon, automatic \$375.
VALIANT 1962 Signet, automatic \$1795.
Compacts wanted TH 5-1515.
Frank Henry, 1798 University, Berkeley. 2-24-H

FOR SALE: '53 FORD 6-Ranch Wgn., stick, radio, exc. mech. condit., good tires. \$229. 843-8309. 2-28-S

1954 CHEVY 6 cyl. New tires, R/H, good transmission. \$200. 841-9320 eve. and weekends. 2-28-N

KARMANN GHIA 1958. Economical, excellent condition, good tires, best offer. 848-6080 evenings. 2-28-N

1957 RAMBLER WAGON. Automatic transmission, R/H, new tires, interior. Good condition. \$400. 843-3828 after 5. 2-25-F

1955 CHEVROLET BEL AIR, radio, etc. Extremely clean. Asking \$375. TH 5-2760 after 4 p.m. 2-28-W

MUST SELL 1957 OLDS Super 88 hardtop. New tires, brakes, interior. Good engine, paint. \$650/best offer. 849-1798. 2-24-B

1956 OLDSMOBILE HOLIDAY 88. 4-door hardtop, top, power steering, brakes, white walls. \$650 asking. 525-3226. 2-24-A

1961 VOLKS SEDAN. Radio, new battery. \$325 or best offer. See at 2231 Ward apt. 6-8 p.m. weekdays. 3-4-B

PONTIAC 1956 CONVERTIBLE. New top, radio, heater, power steering, and brakes. Excellent condition. \$495. 527-1826. R-26-R

1950 CHEVROLET 4-door 6 stick, good condition. \$67. Phone 845-0819 after 6. 2-24-C

1954 BUICK SPECIAL. Two door sedan, R/H, stick shift, good condition. Asking \$225. Call 843-9878. 2-27-B

1955 VOLKSWAGEN: (1958 motor). Good fuses, clean. \$420. 1953 Chevy 1/2 panel. \$150. 843-4020, 843-0263. 2-27-G

AUSTIN HEALEY 3000 1960. Very fine, dark metallic green, factory hardtop, radio, \$1800. GL 1-9836. 2-27-K

1957 FIAT 600 25,000 miles. Radio, heater, good tires, good condition. \$250. Call 655-7241. 2-28-A

CHEVY 1953-AUTOMATIC. Radio, heater, rebuilt engine. \$185 or offer. Call evenings 843-2689, UN 1-0706. 2-28-J

1954 MG 1100 Sport sedan. Radio, heater, W/W, like new. Save 15%. 843-4341 evenings. 2-28-W

Apparel

NICE USED CLOTHING. We buy and sell, wool Capri pants \$1.98, car coats 98c to \$3.98, formal like new, sweaters for the family, men's sportcoats \$2.98, ladies wool skirts \$1.98, children's clothing. 11732 San Pablo, El Cerrito. Garment Exchange. BE 4-0341. R-3-18-G

CLASSIFIED ADVERTISING

101 Eshleman Hall
TH 8-4800, ext. 3941
8-12 noon 1-6 p.m.
DEADLINE 12:00 NOON

Patronize Our Advertisers

Stereo & Hi Fi Components
DISCOUNT PRICES
 We Sell and Service Wollensak



THE sounding board

2342 Shattuck
 TH 3-7031

Daily 10:30 a.m. - 9 p.m.
 Sat. 10:30 a.m. - 6 p.m.
 Sunday 1 p.m. - 5 p.m.

Valentine Battle Over

9 x 12 Card Man Wins War

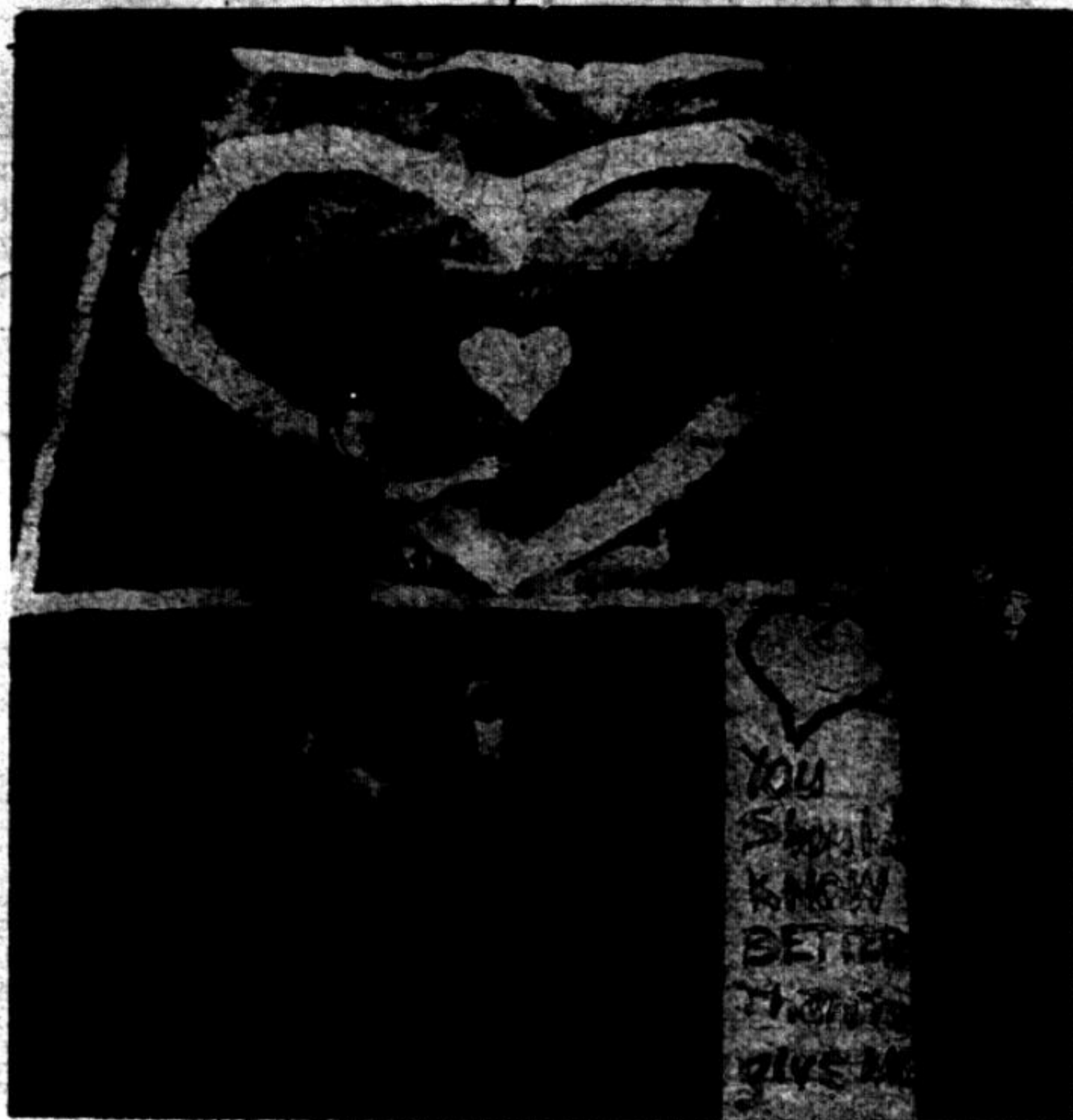
The war between the sexes reached a new peak Friday with a war of Valentines.

John Lock, an electrical engineering major, went all-out by sending his girl friend a Valentine measuring 9 by 12 feet. This was the fourth in a series of progressively larger ones that the couple have exchanged since Valentine's Day.

Lock painted his masterpiece Friday afternoon on a sheet of oil paper in his backyard at a cost of \$2. The colors are red, blue and gold around a pink heart with a pink border.

The recipient, Virginia Downs, will have some trouble finding a place for it, since she has a single room in a dormitory at the Riverside campus. The card was folded and sent in a pillow-sized envelope for Monday delivery.

Lock hopes to conclude the battle by enclosing a P.S. which reads "You should know better than to give me a ridiculous challenge. I win."



BIG HEARTED . . . Oil paper card wins Valentines war for electrical engineer John Locke. The giant card is off to Riverside in a pillow-sized envelope.

MOVIES

BERKELEY THEATERS

BERKELEY 2425 Shattuck
 THornwall 8-4300

The Award Winning
"BLACK ORPHEUS"
 Special Return Engagement:
"JULES AND JIM"
 with Jeanne Moreau
 Box Office Opens 6:30

CINEMA Shattuck & Herta
 THornwall 8-2038

Turgenev's
"FATHERS AND SONS"
 — and —
 Satyajit Ray's
"DEVI (THE GODDESS)"

GUILD & STUDIO
 Telegraph & Herta THornwall 8-2038

GUILD — Startling!
"THE CURSE OF FRANKENSTEIN"
 — and —
 Edward Judd, Janet Munro
"THE DAY THE EARTH CAUGHT FIRE"

STUDIO —
 Danny Kaye, Curt Jurgens
"ME AND THE COLONEL"
 — and —
 Fernandel in
"THE MAN IN THE RAINCOAT"

California Kittridge & Shattuck
 TH 8-0620

Dean Martin, Carol Burnett
"WHO'S SLEEPING IN MY BED"
 — and —
 Yul Brynner, Kay Kendall
"ONCE MORE WITH FEELING"

TAKE IN A MOVIE

OAKLAND THEATERS

Paramount 2025 Broadway
 TW 3-2300

Tommy Kirk, Annette in
 Walt Disney's
"THE MISADVENTURES OF MERLIN JONES"
 — plus —
"DOG OF FLANDERS"

Grand Lake 3200 Grand
 GL 2-3556

Jack Lemmon, Carol Lynley
"UNDER THE YUM YUM TREE"
 — and —
"A NEW KIND OF LOVE"
 Paul Newman, Joanne Woodward

Parkway Park Blvd. near
 Lake Merritt
 GL 2-3391

BIGGEST THRILL OF THE YEAR!
 John Gaby, Alaina Delon
"ANY NUMBER CAN WIN"
 — and —
"IN THE DOG HOUSE"

TOWER 5110 Telegraph Ave.
 OLYmpic 3-8022

Rossano Brazzi, Leslie Caron
 in
"THREE FABLES OF LOVE"
 — plus —
"CROOKS ANONYMOUS"
 with "That Carry-on Gang"

T & D 429 - 11th Street
 TW 3-5505

Doors Open 12:15 Daily
 Vince Edwards, Albert Finney
 Carl Foreman's **"THE VICTORS"**
 12:30-3:20-6:30-9:45
 Plus: **"SONG OF LONDON"** in color

NORTHSIDE 1828 Euclid
 TH 1-2648

STUDIO A —
"TOUCH OF EVIL"
 Orson Welles, Charlton Heston
 — and —
"EXPERIMENT IN TERROR"
 Glenn Ford, Lee Remick

STUDIO B —
"OCEANS 11"
 Frank Sinatra, Dean Martin, Sammy Davis, Jr.
 — and —
"CAPE FEAR"
 Gregory Peck, Robert Michum

United Artists 2274 Shattuck
 TH 3-1487

Bette Davis, Carl Malden, Peter Lawford in
"DEAD RINGER"
 — plus —
"DR. CRIPPEN"

OAKS Solano at Alameda
 LA 6-1836

Cary Grant, Audrey Hepburn
 in
"CHARADE"
 in Technicolor

ELMWOOD 2964 College
 TH 8-0931

HELD OVER AGAIN
 Marcello Mastroianni
 in
"FELLINI'S 8 1/2"

CINE 7 MacArthur at 39th Ave.
 AN 1-3382

Ras Vallone, Jean Sorrell
"VIEW FROM THE BRIDGE"
 — and —
 Peter Sellers
"WRONG ARM OF THE LAW"

ROXIE 519 - 17th St.
 TW 3-3311

Funniest Picture of the Year
"TOM JONES"
 Albert Finney, Susannah York
 3rd BIG WEEK!

Fox Oakland 1819 Telegraph
 TW 3-2303

Natalie Wood, Steve McQueen, Edie Adams in
"LOVE WITH THE PROPER STRANGER"
 — and —
"JET STORM"
 Tickets now on Sale "Liston vs. Clay"

Piedmont 41st & Piedmont
 654-2727

SPECIAL STUDENT RATES!
 Otto Preminger's
"THE CARDINAL"
 Tom Tryon, Carol Lynley
 — and —
 Terry-Thomas
"A MATTER OF WHO"

**. . . NO,
 BUT I SAW THE
 MOVIE**



HEY!

Wanna Be A
 Playboy Bunny?
 Wanna Make
 A Lot of Lettuce?
 Well Hop Into
 114 Eshleman . . .

