

Heyns Issues New Campus Rules

Final Set To Come Later

By LARRY GARTNER

The new University student activity regulations, including many "extensive changes" according to Vice-Chancellor Earl Cheit, were released in press conference yesterday afternoon.

The new rules go into effect immediately.

The new regulations, along with a statement by Chancellor Roger W. Heyns, are printed in full on pages 6 and 7 of this edition.

Accompanying Cheit to the press conference was John D. Searle, associate professor of philosophy, who has been appointed the Chancellor's Special Assistant on Student Organizations.

The new rules "are provisional and will be in effect until a final set is developed with formal student participation," Heyns' statement said.

Cheit said that no formal deadline has been set for the adoption of the final rules.

But even after the permanent rules are adopted, Searle said, they will be under constant review.

Cheit said a "fairly extensive series of changes" were made from the proposed rules released from the Chancellor's Office on September 3.

One major change was in the fund raising procedure on campus specified in the rules (section 4 b). Formerly an organization had to register a financial statement with the University. The new rules require that an organiza-

The DAILY CALIFORNIAN

93 YEARS OF CONTINUOUS PUBLICATION

Vol. 189, No. 2

University of California, Berkeley, California

Thursday, September 16, 1965



ROGER HEYNS

tion's financial records only be available for inspection on reasonable grounds of belief of misuse.

Both Searle and Cheit expressed their belief (on the basis of their personal discussions with faculty members and students) that the overall response of the academic community to the new rules has been favorable.

Many minor changes were also (Continued on page 10)

Searle Appointed to Post

John D. Searle, associate professor of philosophy, yesterday was named Special Assistant to the Chancellor on Student Organizations, replacing Neil Smelser, professor of sociology, who is on sabbatical leave.

Searle's appointment was announced at a press conference where Vice Chancellor Earl Cheit released the new student regulations.

Searle's task, according to Cheit, will be to aid Chancellor Roger Heyns in consulting student organizations concerning the new rules.

Asked why he had accepted the post, Searle replied, "To me this is a case of put up or shut up."

"I have been critical of some of the University's procedures in the past, and this appointment gives me the opportunity to make suggestions . . . necessary to make

the University run more effectively."

Searle said he planned to ex-



JOHN SEARLE

periment with various ways of increasing student participation in rule-making procedures.

Searle attended the University of Wisconsin and received a Rhodes Scholarship to Oxford University, where he received a B.A. in 1955 and a D.Phil in 1959. He was a lecturer in philosophy at Oxford from 1956-1959.

He became an assistant professor here in 1959, and was appointed associate professor in 1964. His field is philosophy of language.

Searle was appointed a member of the Senate Policy Committee of the Academic Senate in May, 1965. He was also very active in the passage of the December 8 resolution of the Academic Senate, in which that body proposed a set of rules for establishment of free speech on the campus.

FSM Trial

16 More Sentenced

Berkeley Municipal Judge Rupert Crittenden, in less than an hour yesterday passed sentences on 16 FSM members involved in sit-ins last December.

Before September, 575 demonstrators had been found guilty of trespassing, and many were found guilty of resisting arrest as well. Most have appealed their cases. "Within the next two days," FSM legal counsel Albert Litewka said, "25 to 30 more defendants will come up to have sentences executed."

The defendants will have the option to post bail or request a

10-day stay, he explained. At the end of the stay, the defendants may pay cash for bail, which is refundable, or they may pay a bail bondsman ten-per cent of bail price. This amount is unrefundable. The bondsman then insures the court that the defendants will appear.

Because most of the FSM defendants cannot raise the cash for their entire bail, the 10 per cent method has been employed, said Litewka. But it is an expensive method. The bail bondsman makes the profit on the ten per cent.

Litewka estimated defendants already sentenced had paid \$20,000 to bail bondsmen.

Litewka also spoke of a new process which defense will try to use for the remaining 125 defendants when their 10-day stay is up.

A defendant may by this method, have two citizens appear in court for him; each swears that he is worth the bail price of the defendant and will pay it if the defendant does not appear in court.

Although Crittenden would not allow defendants to be released in this manner in five test cases this summer, Judge Floyd Talbott approved in one case while Crittenden was on vacation.

For several weeks, Litewka said, professors have been recruited to act as "co-signers" for the defendants.

Fewer Register Than in '64

4755 students registered yesterday bringing the total to 25,607

That total is 850 less than at this time last year. Another thousand students registered late last year.

The ratio of men to women yesterday was three to one.

Co-eds Exhibit Little Surprise At Draft Forms

After years of putting students through the machine, the University has committed the final ignominy — the distinctions between male and female students have been erased.

At least, that seems to be the case since the University began putting draft deferment forms, bureaucratically known as "SSS Form 109 for undergraduates," in registration packets sent to women students.

Happily (or unhappily as the case may be), most of the women students were not too shocked by the apparently complete disregard of their sex.

One smiling frosh co-ed explained it didn't worry her. "I thought it was a sign of their non-discrimination," she said.

A spokesman in the Registrar's office explained the cards were automatically put into all of the registration packets sent out. "However, the instructions were clear," she said.

Sic Semper Universitas . . .

UC Mourns Jenkins Death

University flags were flown at half-mast yesterday in recognition of the passing of Professor James Jenkins, 61, of the department of genetics.

Jenkins, a full professor, became acutely ill in his office on the third floor of Mulford Hall early yesterday afternoon. Associates took him downstairs, where his condition worsened.

He was driven to Herrick Memorial Hospital in Berkeley where he was pronounced dead on arrival shortly before 2 p.m.

Jenkins leaves a wife, Katharine, who is presently in Mexico. Mrs. Jenkins has also been associated with the University in the position of lecturer in decorative arts from 1951-52. They had no children.

Besides holding the rank of professor of genetics, Jenkins was also geneticist at the University's (Continued on page 10)

Splits Arise in FSU On Plans and Policies

By James Gewirth

Debate is raging within the Free Student Union over the general role of the student movement in American society, the function and organization of a central student protest movement, and what student problems should be targets of the movement.

The Free Student Union is the successor to the Free Speech Movement. It was active on the campus last spring, concerning itself with limits on student political activity.

One argument concerns the extent of student protest against U. S. policy in Vietnam. Tom Irwin, FSU press secretary said student Vietnam protest should be confined to demonstrations against whatever role the University might play in the defense effort.

Proponents of a wider protest effort would not comment on Irwin's viewpoint.

The most burning issue within the group is the role and organization of the overall student protest movement.

What is desperately needed is a "conscience" of the student body, the Free Student Union which would have real power to influence the University's viewpoint or action on any student-related issue, Irwin said.

"The central organization of student protest is imperative," he said, "because it is easier for the University to ignore small groups concerned with only one issue than a large coalition of student protest groups."

Organization of small protest groups — "locals" of the larger coalition — would be easier Irwin said, if they all had a central clearing house where telephones could be manned and printing, mailing, and public relations

could be handled easily. Also the whole "umbrella" organization would be ready for a mass student demonstration whenever necessary.

The opposing faction, including Jack Weinberg and Alan Butler of the FSU Summer Organizing Committee, argues there is no need for an "isolated bureaucracy" which would be without a cause.

They feel "instigation of student protest is wrong, and protests and the organization which sponsors them should be "spontaneous." Irwin thinks education of the student body is imperative.

GOP Leaders Attack VDC

SAN FRANCISCO (AP) — Republican party spokesmen have called for dismissal from the University of students who participated in attempts to stop troop trains this summer.

The Republican group is currently touring the state to present voters with "responsible constructive alternatives to the Gov. Edmund G. Brown administration," according to Assemblyman Robert Monagan of Tracy.

Monagan, GOP minority floor leader, is one of the members of the touring "Republicans in Action" group.

They maintained that illegal activities of any kind must not be permitted on the University campus.

Others in the group are Assemblyman Don Mulford of Oakland, minority caucus chairman; GOP State Chairman Gaylord Parkinson of San Diego; State Vice Chairman James W. Halley of San Mateo, and Assemblyman John G. Veneman of Modesto.

Mulford said Gov. Brown, as president of the Board of Regents, should put a halt to activities of students to participate in Vietnam Day Committee activities.

"We are at war and the governor has the obligation to urge our loyalty to the commander-in-chief," the Oakland assemblyman declared.

Opportunities On Daily Cal

The Daily Californian is expanding its staff and is currently asking all interested students to apply for jobs as reporters. For students interested in journalism careers, and for those interested in becoming acquainted with the campus and its most interesting figures, the Daily Californian is the only means.

New staff members will be fortunate enough to enroll in a series of journalistic training sessions conducted by George Randol, a copy editor with the San Francisco Chronicle.

Please come in and meet our staff. Assistant City Editor Barry Bishin and Feature Editor Konstantin Berlandt will be helping new reporters become oriented and are in the Daily Californian office on the sixth floor of Eshleman Hall most of the day. I hope to see you up here.

Peggy Krause, Editor

Regents Meeting On Greek Rules

The Regents will hold their first meeting this semester today and tomorrow in San Diego. Among other topics to be discussed, there will be a report on fraternity and sorority compliance with the University's non-discrimination pledge.



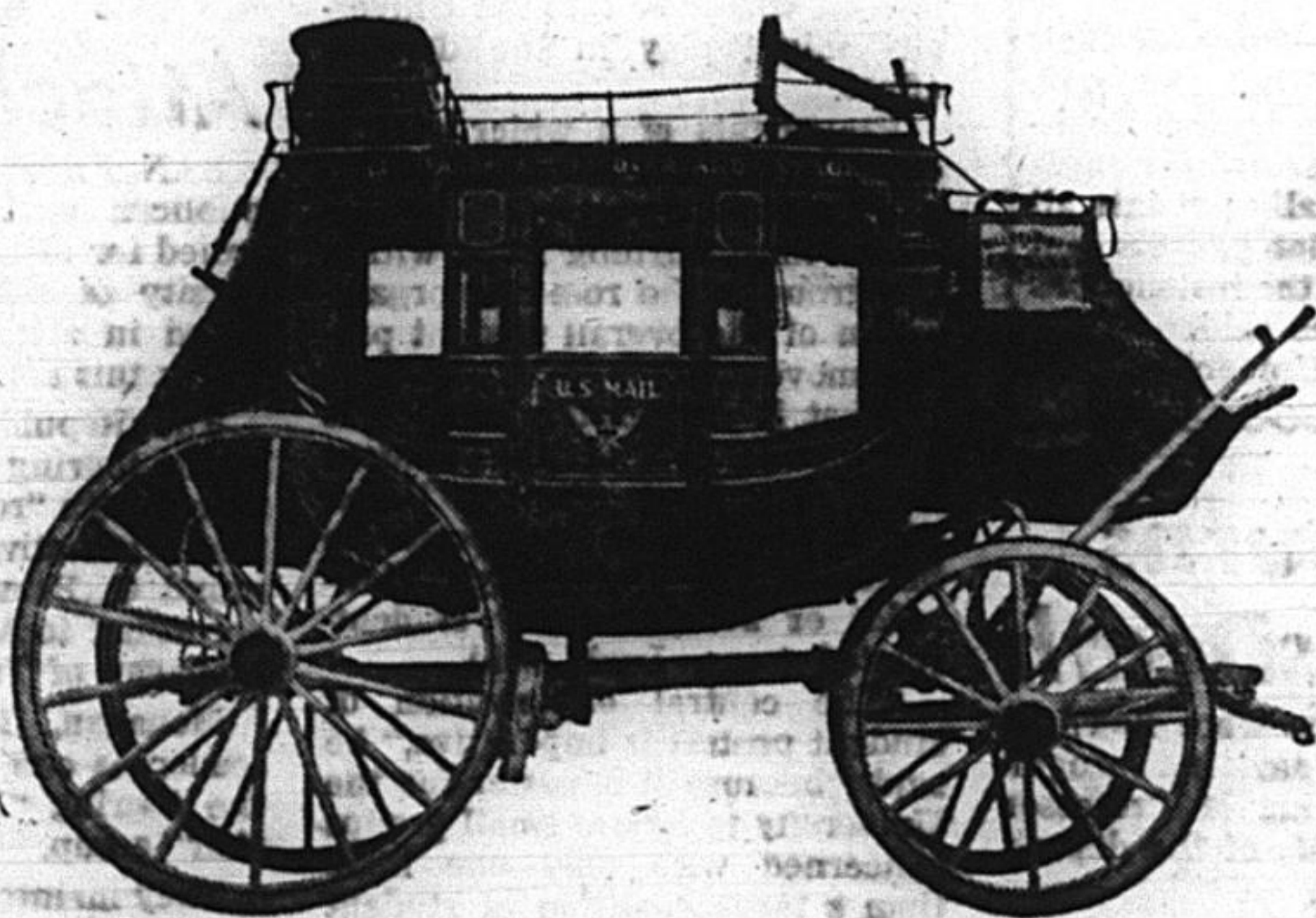
signed

A Wells Fargo Bank checking account is the easy way to keep track of when, why and where your money went. It doesn't cost an awful lot either. A special account costs only 15¢ per check. A regular account may cost even less, depending on the balance you keep and how many checks you write.



sealed

Now you can have a checkbook bearing an insignia of the University of California at Berkeley. Printed in the school colors of blue and gold. It's a new service from Wells Fargo Bank. And it's free.



delivered

Your University Checkbook is waiting for you at our nearest branch. Just come on in. You'll get a real Western Welcome. And when you open your account, take a good look at our exclusive stagecoach checks. They're real Western Money — available only at the oldest bank in the West.

MEMBER FEDERAL DEPOSIT INSURANCE CORPORATION

Ferber New UC 'Lobbyist'

The Multiversity has spread again, this time to the Nation's capital.

The University has appointed a Special Assistant for Governmental Relations to handle its business in Washington.

Mark Ferber, the man in charge of the University's Washington operations, emphasized his office is not engaged in lobbying in the legal sense.

He said the Lobbying Act of 1954 requires all lobbyists to obtain a license, but this rule applies only to those who are lobbying in Congress.

The University is mainly concerned, Ferber said, with obtaining such things as government grants and contracts, and would thus be dealing with the Executive branch of the Government.

His office has already worked with the Atomic Energy Commission, and will be working on procuring a large portion of the upcoming federal research funds for oceanic research.

Smaller problems, such as an individual student's draft status or a new professor's visa, also go through this office.

Ferber said he considered the distinction between a Congressional lobbyist and an executive lobbyist "foolish."

"They are both involved in trying to influence the workings of government," he said.

FREE MOVIE "DEATH OF A SALESMAN"

Starring Frederick March

Thursday, Sept. 16, 8 p.m.

WESLEY FOUNDATION

Bancroft and Dana

THE HOUSE OF PIERCED EARRINGS

From \$2.50 to \$20.00 in 14 Karat Gold

Expert Watch Repairing

3-5 day service

SATHER GATE JEWELERS

2390 Telegraph
TH 8-5303

Near Channing Way
Berkeley

YOU MAY BE SHIPPED TO HAWAII IF YOU GET CAUGHT

CARRYING A CAL GUIDE

Don't miss the fun

PICK UP A
CAL GUIDE



today

FREE

available at businesses listed here:

DURING THE FALL SEMESTER, 1000 STUDENTS CARRYING A CAL GUIDE WILL BE CAUGHT ON CAMPUS BY Secret Agent 008. If you have a CAL GUIDE in your purse or wallet when you are stopped, you will be given a PRECISION, FLORENTINE, CAL GOLD PEN. STUDENTS, so "penned," will participate in the 008 DRAWING in January, 1966. The WINNER OF THE DRAWING WILL BE SENT TO HAWAII ON A SEVEN DAY JET HOLIDAY. The trip may be taken any time before September, 1966.

FOR PURSE OR WALLET

CAL
GUIDE

• COMPLETE MAPS OF THE CAMPUS and BERKELEY

• CALENDAR of ACADEMIC DATES

FREE

• UNLISTED PHONE NUMBERS and VITAL INFORMATION

• SPECIAL—STORE DIRECTORY

THE ACTION IS AT HARRIS GOLDEN-BEAR SHOP



Big Zipper
BENCH WARMER

The jacket for action. Warm, wool melton. Comfortable parka. Big zipper, closing for front and pockets, with easy-pull ring. Draw cord hood. Great.

1212⁹⁵

HARRIS
OF BERKELEY

SHATTUCK at UNIVERSITY
Open Thurs. Nite to 9 p.m.
TH 1-3955

ADDING MACHINES and TYPEWRITERS

"Van" the typewriter man
2510 Channing Way

AIRPLANE

SCHEDULES and RESERVATIONS
FLY OAKLAND DESK
562-4165

BARBER SHOP

Stadium Barber Shop
2254 Bancroft Way

BEER and PIZZA PARLOR

Straw Hat Pizza
63rd St. and Telegraph Ave.,
Oakland

BUTTONS, BUMPER STRIPS, PARTY FAVORS

call Rich Reese
Don Wright Associates—654-1437

CAR WASH and SERVICE STATION

California Car Wash
Kittridge and Fulton

ENTERTAINMENT—ICE SKATING

Berkeley Iceland
Ward and Milvia

FOREIGN AUTOMOBILE REPAIR (all makes)

Leif Lindzen
2250 Fulton Street

FURNITURE, APPLIANCES and TV

Barker Tilton Co.
2128 Center St.

HONDA SALES, PARTS and SERVICE

Honda of Berkeley
1536 University Ave.

HI FI KITS

Zackit Corporation
2140 University Ave.

LAUNDRY and DRY CLEANING

COIN-OP and professional
Sunshine Centers
2847 Shattuck
1187 University

NEWSPAPER

San Francisco Chronicle
2510 Grove St., Oakland, 444-1414

PHOTOGRAPHIC EQUIPMENT & SUPPLIES

Berkeley Photo Co.
2311 Telegraph Ave.

RESTAURANT

Robbie's Cafeteria
2379 Telegraph Ave.

READING IMPROVEMENT

Evelyn Wood
READING DYNAMICS INSTITUTE
1440 Broadway, Oakland, 444-3047

USED CARS (economical transportation)

BEACON MOTORS
4444 Telegraph Ave., Oakland
655-1157

VARIETY STORE

Golden Bear Variety
2411 Telegraph Ave.

Western Variety
2360 Telegraph Ave.

AUTO PARTS & ACCESSORIES,

CORDOVAN TIRES & BICYCLES

GRAND AUTO STORES
1909 University Ave., Berkeley

DON'T GET CAUGHT WITHOUT ONE!!!

CARRY A CAL GUIDE

ALL
SEMESTER

THE ASUC STORE IS OPEN TONIGHT, UNTIL 9.

Improved Offensive Line Ready for Irish

By GEORGE BAKER

Saturday's tussle with Notre Dame may turn out to be a slow conservative game with the running attacks dominating the contest. If so, the offensive line of

Cal Snatches Two Future Grid Stars

Future greatness for the University of California's football team was given a little extra assurance when two of the state's top high school gridgers registered in Harmon gym yesterday morning.

This event was even more spectacular because both boys had previously signed letters of intent to go to other AAWU schools — Stanford and USC.

But it would seem that halfback Rick Bennett and end Tom Born have seen the light of the Campanile and have made the switch, but not without a fight.

Conference rules state that once an athlete has signed a letter of intent to an AAWU school he may not change without a penalty. The penalty is the loss of one year of eligibility (the freshman year in this case) and financial assistance from the University during that period.

The University filed a petition to have this penalty waived, but it was denied.

Both Bennett and Born said they will pay their own way the first year, Born with the help of a part-time job.

Both boys can be considered prize catches for the Blue and Gold.

Bennett, who signed the letter of intent with Stanford, is a 6-1, 200 pounder. College scouts classify him as the best running prospect since Hugh McElhenny.

A 10-flat sprinter from Selma, Bennett owns all the rushing records in the Central Sequoia League. He rushed for 1,200 yards last season, an average of 11 yards per carry, scoring 27 touchdowns. "Now that I am at California I know I made the right decision," Bennett said. "I think it's great here."

USC was supposed to get Born, 6-2, 200 pounds, but the star end said he became disillusioned with the Los Angeles area when he was down there for the North-South Shrine Game.

Both athletes had received numerous offers from colleges throughout the Western United States.

Cal will be under heavy pressure to open holes in the Irish line.

Unlike last season, the Bears' line is much more experienced, with three linemen returning to the interior line spots. Fitting in with Cal's new formation, a variation of the slot T with strong and weak sides, will be tackles John Rusev and Roger Foster, and guards John Garamendi and Tom Brown.

Foster, the pride of Lynwood and the biggest lineman at 240, will be anchoring the line at strong side tackle after running at defensive tackle last campaign. He is a candidate for All-Coast and All-American honors and great things are expected of him.

Foster's opposite number, the weak-side tackle, will be Rusev, a strapping 6-5, 236 pounder who

has great mobility and speed for a big man.

At the weak side guard position is Garamendi, an all around lineman who logged the most time played for any player and also was accorded All-Coast honorable mention honors last season. The one newcomer to the offensive line will be Brown, who sat out last season but has been performing outstandingly well so far in practice.

The center position is being anchored by Jeff Palmer, a two year letterman who tips the scales at 6-0, 215 pounds.

Backing up the interior line is a bevy of men who should provide the depth necessary to carry the team through the season. Men such as Sam Hard, a starter last year, Gary Bystrom, John Salis-

bury, and Bob Hammes, appear capable of filling in when needed.

With all the experience of these men the lines figures to be greatly improved over last year. Offensive line coach Bud Van Dern commented, "With more experience the line is performing the fundamentals a lot better, and since we won't be using the pass formation as much as last year the line is able to use much more aggressive blocking."

BIG LINE

Is the line big enough to move the massive Notre Dame forward wall which include 270-pound Kevin Hardy? "This line is big enough for any college line. But more than that they are able to adjust to various situations and understand the blocking assignments," said Van Dern.

But as experienced and as improved as the line is, they still haven't jelled the way the coaches would like. "Individually, we have a much better line and it is better conditioned. But we haven't quite started playing as a unit. But of course this takes time and right now they are coming along real fast," Van Dern concluded.

Unlike last season the ends will be employed primarily as blockers, but they can also catch the pass. Mike Gridley, starting his third season, will be set at the strong side end, while John Beasley, a rangy 6-3, 220 pounder will open at the weak side position. Backing up these men will be Dick Williams, a returning letterman, and Bill Krum who sat out last season with an injured shoulder, but who played great ball as a sophomore.

As Saturday's game approaches the big question mark is who will be in the starting backfield. As

of today three-fourths of the backfield slots are still up for grabs, according to Coach Ray Willsey.

At quarterback it will either be Jim Hunt, Craig Morton's understudy last year and a fine defensive back, or Dan Berry, a south-paw slinger who won All-American junior college honors at San Diego City College last season. No matter who starts it is likely that both men will see plenty of action Saturday. Hunt is a good passer and handles the option well, but Berry is the better runner and throws a much harder pass than Hunt.

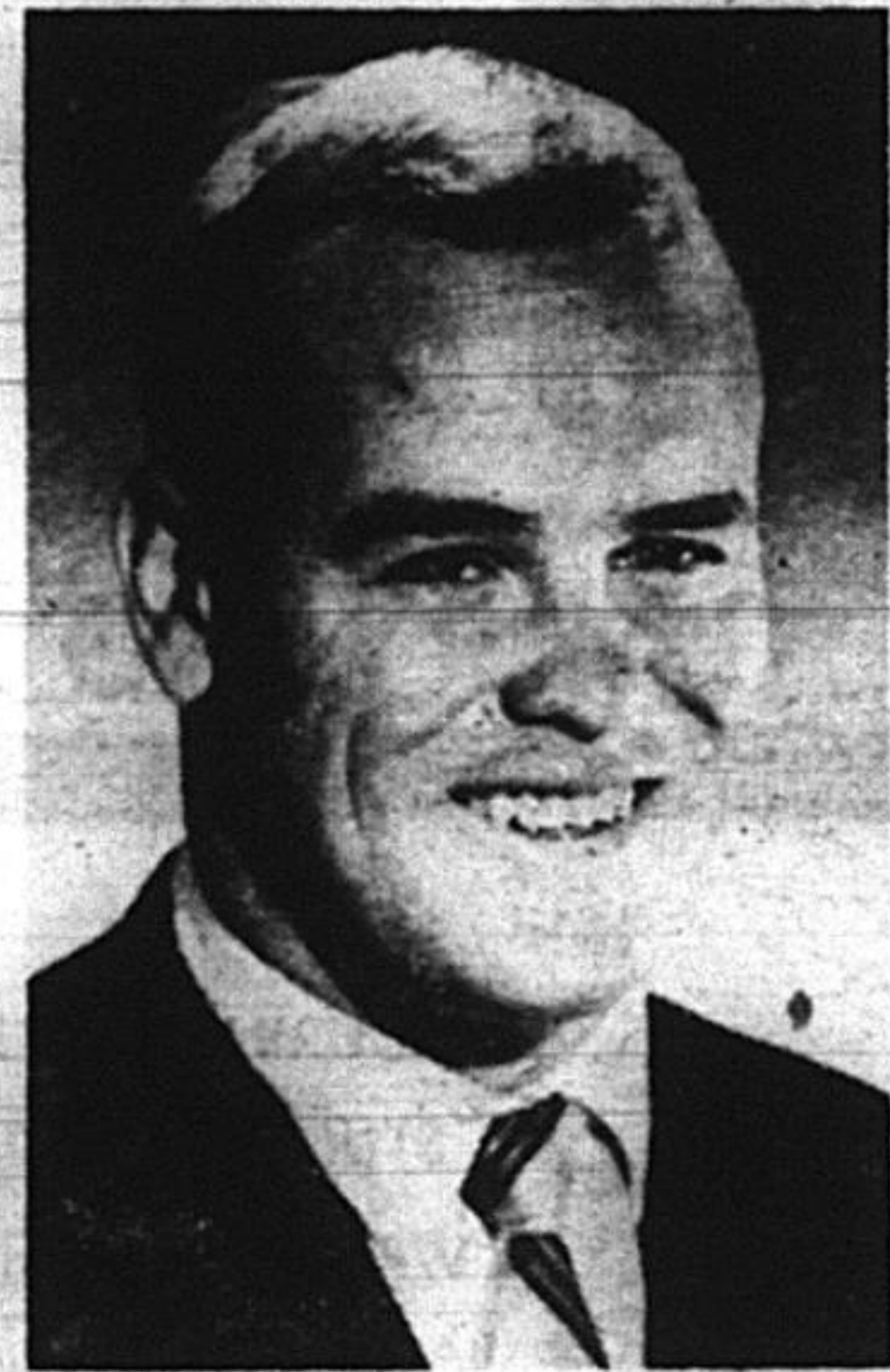
FULLBACK BATTLE

Another tussle is shaping up between Ron Minamide and Frank Lynch for the fullback spot. Both are in their first year of varsity competition, Minamide having sat out last year, and Lynch transferring from Foothill Junior College. While "Minnie" is only 5-9, 190 pounds, both men are tough, headdown runners, hard to bring down, and excellent blockers.

The halfback spot is a battle between two more newcomers, Lloyd Reist and Ted Parks. Reist was the top halfback during Spring drills, but Ted Parks, the top performer on the frosh squad last season is coming along quickly and may move Reist behind him.

The only settled position is at wingback where Tom Relles, Cal's top runner last year as a junior, is set. Relles will be a great triple threat from the wingback spot, being in position to block, catch passes or carry the ball.

Two other backs who should provide plenty of speed for the Bears are Forest Beaty and Jerry Bradley.



JIM HUNT and DAN BERRY
Who will the starter be?

Scouting Report

Strong, Fast is Word on Notre Dame

By DAVE BUSH

Big, fast, experienced, without a weakness in sight.

That is the report on the Notre Dame crew which will thunder from the south end of Memorial Stadium this Saturday afternoon to open the 1965 season against the Golden Bears.

The last time the Irish played and kept score was in the Spring when they nipped their alumni, 72-0. Cal assistant coach Howard White, who witnessed the debacle, said the current edition of the Fighting Irish is indeed 72 points

better than the alumni, which included '64 All-Americans John Huarte and Jack Snow.

Coach White said with a shudder "They are in midseason form. Parseghian (Head Coach Ara) is a master at getting teams ready early. At Northwestern where he didn't have the material he has now, his clubs would always pull off a couple of early-season upsets."

The strongest of the Irish strong points on the field, pinpointed by White, is the offensive line. "From end to end they are big and quick," White said with a shudder.

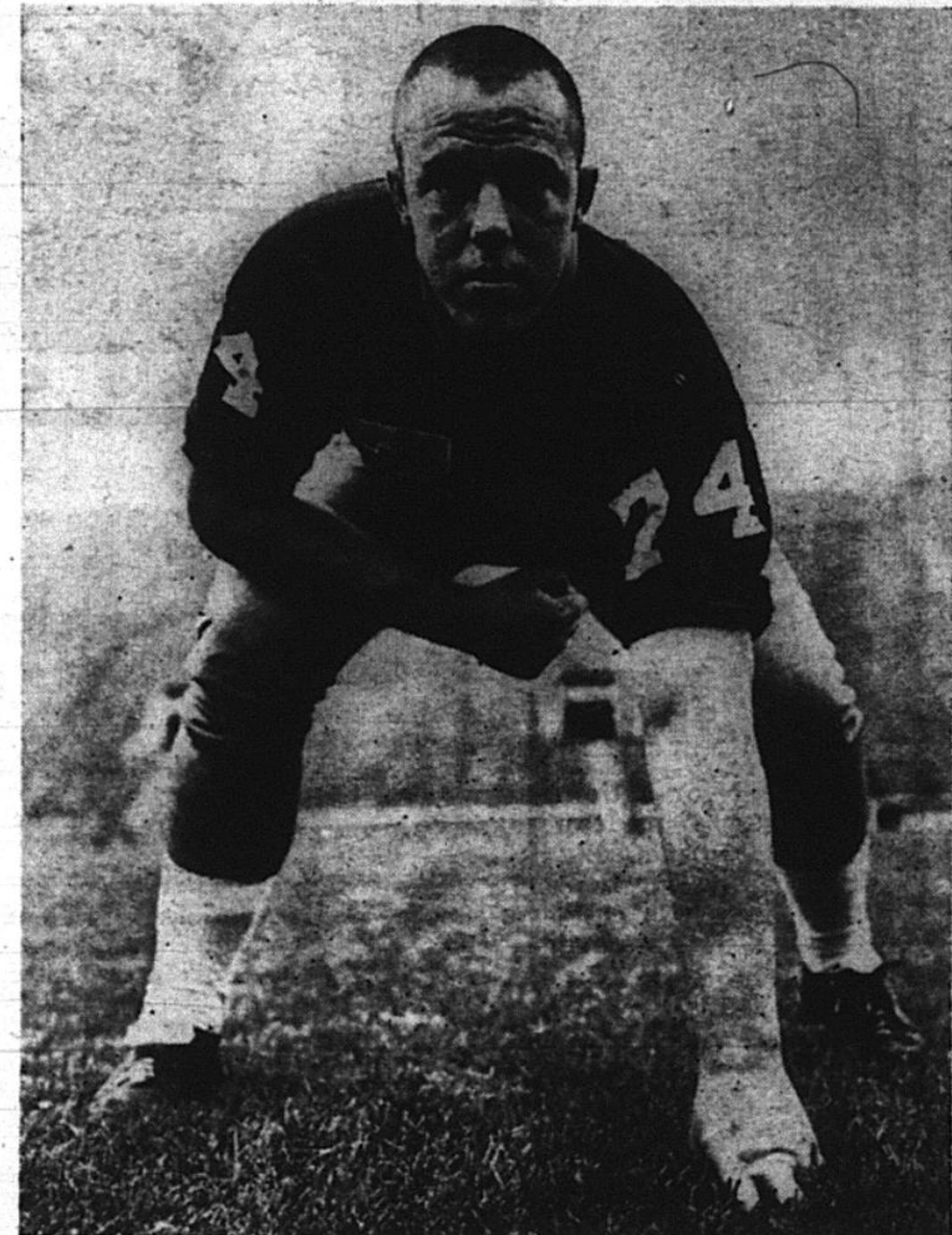
Captain Phil Sheridan anchors the line at end and on the opposite flank Don Gmitter, who switched from defense, was very impressive in the Spring. Tackles Bob Meeker and Paul Seiler, guards Dick Arrington and Tom Regner and center Norm Niccola complete the awesome array.

In the backfield Nick Eddy, the Tracy flash, and Bill Wolski, give the Irish a great halfback duo. Fullback Larry Conjar is in White's words, "on the verge of stardom." Bill Zloch, who impressed in the Spring, is the probable starting quarterback.

On defense, where the Irish were second in the country against the rush and not too kind to passers either, Oakland's Kevin Hardy spearheads a front four that might shake Strawberry Canyon by its eye teeth with its charge.

Hardy won three letters as a soph last year—football, basketball and baseball—and packs 270 pounds on his extremely mobile 6-5 frame. Alan Page is as fine a defensive end as is found in collegiate uniforms, while hulking (6-3, 240) Mike Wadsworth is a bone-rattler. Peter Duranko, a line-backer last year completes the front four.

Veteran Jim Lynch, is the only returnee of the four linebackers, but he is a good one.



KEVIN HARDY

270 pounds of meanness that leads Notre Dame

In the secondary Tony Carey, Ken Ivan and Tom Longo, all returning starters, give the Irish excellent pass coverage.

White figures the Bears will have to run, no easy task, if they are to upset the Irish appercart. The Irish defense is what White calls a forcing type defense. "They keep the pressure on you with that great rush."

In the kicking department the

Irish are typically strong also. Dan McGinn inherited the punting chores from Snow and has been averaging 40 plus yards per boot.

Jim Ryan is the Irish place-kicker and he put one through the uprights from 43 yards away in a scrimmage last week.

"We will probably be happy to have him kick field goals all day," White said with a smile.

ANNOUNCEMENTS

GATEMEN

Male students interesting in working as gatemen for California home football games should sign up immediately in room 403 Eshleman Hall. Positions are paid.

ATHLETIC PRIVILEGE CARDS

Athletic Privilege Cards are now on sale at numerous locations on the campus. The Privilege Card will admit each student free to all California home football games and most home basketball games plus the entire spring sports slate of track and field, baseball, rugby, etc. Tickets may be purchased for \$10 at the Athletic Ticket Office, garage level in Eshleman Hall, and special ticket booths located on the upper and lower Student Union Plaza, and at the conclusion of registration line at the rear of Harmon Gymnasium.

FROSH WATERPOLO SIGNUP

Sign up for all freshman interested in Water Polo will be taken today at 4:30 p.m. in room 127A Harmon Gymnasium.

BASEBALL SIGNUPS

Frosh and Varsity baseball sign-ups will be taken Monday, Sept. 20 at 3:00 p.m. in Room 11 Wheeler Hall.

CREW SIGN-UP

All varsity and freshman crew

candidates, new and old, are to attend a sign-up meeting Monday, Sept. 20 in 11 Wheeler at 4 p.m. Films will be shown.

CREW PHYSICALS

Physicals for all returning crewmen will be given tomorrow, Sept. 17 at Cowell from 3 to 5 p.m. First station is the lab.

BIG C SOCIETY

Initiated Big C members may purchase athletic privilege cards in Athletic Dept. during Reg. Week. They will need a registration card.

SPORTS STAFF

Anyone interested in writing sports for the Daily Californian is invited to drop by the office, 600 Eshleman hall, tomorrow and talk to either John Rodgers or George Baker.

TRACK AND X-COUNTRY

Sign-ups will be held for all those interested in varsity or freshman fall and spring track and cross country Monday, at 4:15 in Edwards track stadium.

CRICKET

Anyone interested in Cricket is invited to the Cal team practice drill tomorrow on North field, behind Hearst gym, between 4-6. All staff and students are welcome.

Student Union Tours Today

Tours of the Student Union will begin today for new students and returning students. The Union

Program Board has announced that the information desk in the lobby will serve as the departure point, beginning at 2 p.m. The tours are scheduled on the half hour until 4:30 p.m.

SNCC To Present Flicks In Dwinelle

8 p.m. today in Dwinelle Hall and will charge \$1 admission. They are "Scorpio Rising," "I Was a 90-Pound Weakling," "The Red Balloon," "The Day of the Painter," "Moonbird," "The Hole" and "The Interview."

Visitor Record For Campanile

The Campanile is not to be outdone in the setting of new records. Guide Harold Lyman reports the expanded hours (every day except holidays, 10-noon, 1-5 p.m.) helped push to 60,000 the number of visitors who ascended the 307-foot tower in 1964-65. The price of a ride is still the same today as in 1923 (10c), a claim few others can make.

Pilgrimage

The Freshman Pilgrimage will take place 2:50 today, beginning at Ludwig's Fountain. Sponsored by the Junior Class, the trip is open to all freshmen and juniors.

S.F. Opera Ushering Tickets

Ushering tickets for the San Francisco Fall Opera Season will be available today at the Ushering Services new location, the Student Union Box Office.

Ushering tickets will be available for other productions including "the Dutchman" and "the Toilet," two controversial LeRoi Jones plays, and the Civic Light Opera production "The Great Waltz."

Returning members will note traditional volunteers have been replaced by ASUC employees. Due to this change, ushering tickets will be available on an "all day" basis.

Through the Ushering Service, students are able to see theatrical productions free of charge in return for their services as ushers.

All registered students and their spouses are eligible for membership in the ASUC Ushering Service.

Buddhist Will Speak Tonite

Gadgin M. Nagao, professor of Buddhist Philosophy at Kyoto University in Japan will lecture on the "silence of the Buddha", 8 p.m. today at the Buddhist Study Center, 2121 Channing Way.

Nagao, recipient of the distinguished Gakushi-in Prize and author of many books and articles, recently presented a paper at the 11th International Congress of the International Association for the History of Religions at California's Claremont College.

He is scheduled to teach at the University of Wisconsin this Fall.

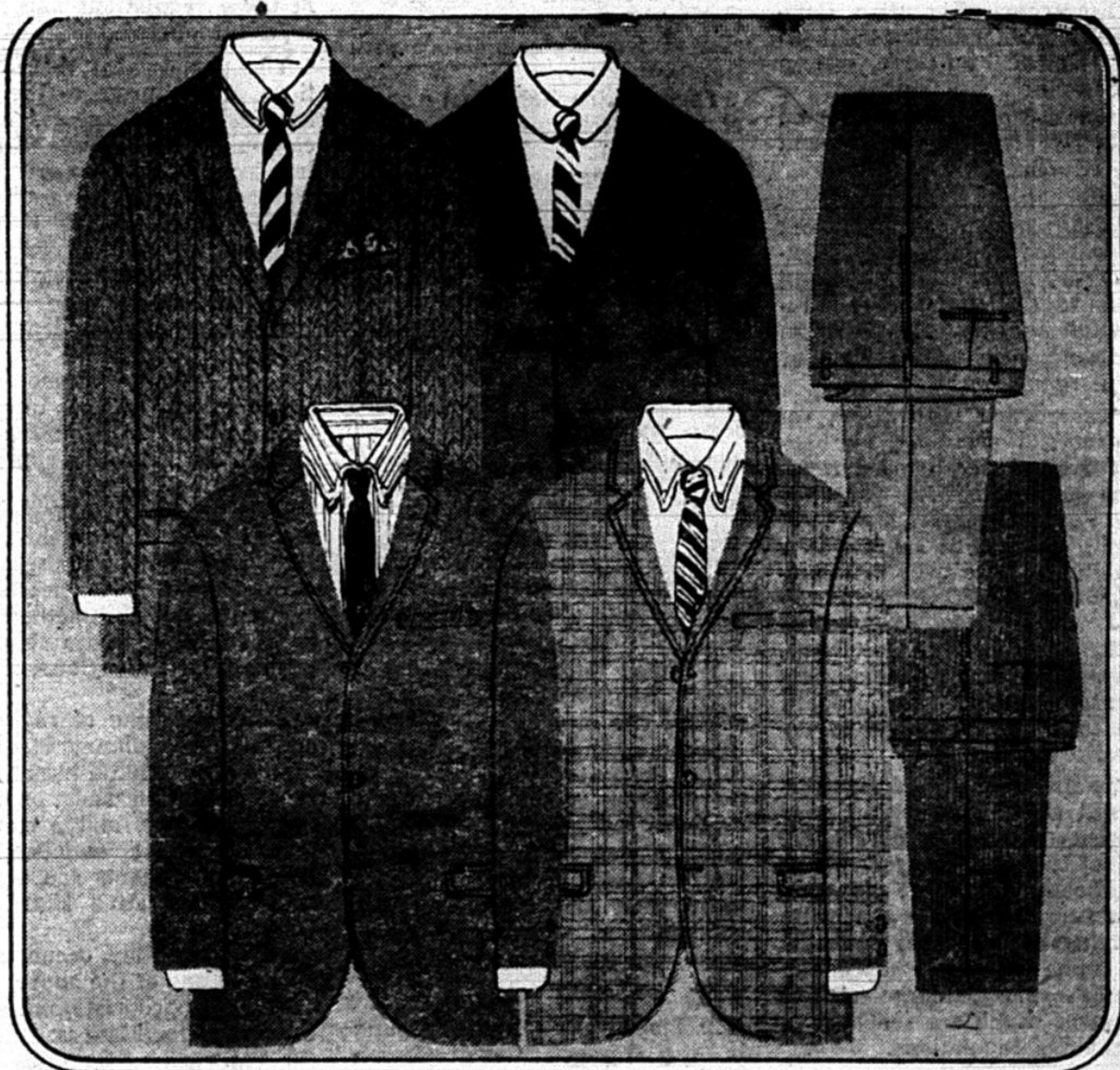
The public is invited to attend the evening lecture and participate in a discussion to follow.

PAYLESS
2394 Telegraph
RECORDS
Most Complete Selection
BIG DISCOUNTS
\$5.98 STEREO \$3.98
GOLDFINGER
DIAMOND NEEDLES
STEREO PHONOS
FM RADIOS
\$20 to \$200
RECORDING TAPE
BALCONY BARGAINS
MONO &
STEREO
FROM **99c**

**Attention students:
We'll be open extra hours
for your convenience
during Registration Week!**

**September 14, 15, 16
Open 9:30 a.m. to 4:00 p.m.**

WELLS FARGO BANK
Since 1858 FORMERLY WELLS FARGO BANK AMERICAN TRUST COMPANY MEMBER FEDERAL DEPOSIT INSURANCE CORPORATION
University Office: 2460 Bancroft Way
Across from the Student Union



GREAT GOING...for campus or business!
**GRODINS TRADITIONAL
MANY-WAYS WARDROBE**

only **10.00** a month

For the young man on the move... a chance to move into great savings on the best-looking natural shoulder wardrobe anywhere! All the quality clothes you need for campus or weekend dating in one perfectly co-ordinated package:

	Value
YOUR CHOICE of any fine Sharkskin or Worsted SUIT at	\$ 72.50
YOUR CHOICE of any Shetland SPORT COAT or BLAZER at	39.50
YOUR CHOICE of any two pairs of fine Worsted Plain Front Slacks	23.50
	23.50
	Total Value \$159.00
	Rams Head Special Wardrobe Price 129.00
	YOU SAVE \$ 30.00

GO GRODINS
the store that knows mens wardrobes best
SATHER GATE - SHOP THURS. 'TIL 9:00 P.M.

**FLY TO THE
EAST and MIDWEST
FOR**

CHRISTMAS
ON INEXPENSIVE
CHARTER FLIGHTS

Fly **UCNA CHARTERS** . . . Now in its **FOURTH** consecutive year.

- OVER 2,000 STUDENTS HAVE FLOWN ON UCNA CHARTERS
- COMPLETE PROTECTION OF ALL FUNDS
- IN CONJUNCTION WITH ONE OF THE OLDEST AND BEST KNOWN TRAVEL AGENCIES IN CALIFORNIA.

WRITE NOW FOR DETAILS.

TO

**UCNA CHARTERS
2926 BENVENUE
BERKELEY 5, CALIFORNIA**

Student Conduct Provisional

(Editor's note — Following is a complete copy of Chancellor Roger Heyns's provisional regulations on student conduct.)

TO THE BERKELEY CAMPUS:

With this announcement, I am issuing Berkeley Campus regulations.

The fundamental assumptions behind these rules can be stated quite briefly. They are, first, that the primary purpose of the University is the advancement and dissemination of knowledge; clearly, rules should be designed to promote that primary function. Second, that the rules must not regulate the content of expression or advocacy or otherwise limit constitutional rights. Third, that the rules should, as far as possible, reflect the consensus of the campus community.

These rules are provisional and will be in effect until a final set is developed with formal student participation. The rules implement Universitywide policies on student conduct and student organizations. The Universitywide policies were formulated from a report submitted to The Regents last May. Students, faculty, and the Emergency Executive Committee of the Academic Senate offered comments on these, and on the basis of these comments, a final text was prepared and issued by the President on June 29, and made effective July 1.

These Universitywide policies regulating student conduct and organizations require the chancellor to issue "implementing campus regulations" and to "consult with students and faculty in the development and review of student regulations."

In accordance with these requirements, I presented on September 3 a set of proposed regulations and asked for your advice. Your response has been prompt, helpful, and gratifying. In all there were over 100 communications. We received detailed memoranda and held lengthy personal consultations. Several departments have already requested authority to proceed under our new proposals to decentralize regulation.

A reading of the regulations below will show how helpful your comments and advice have been. Many of the proposals for change have been adopted. Your comments and advice were especially gratifying because they revealed that from last year's discussion there have emerged large areas of agreement which are reflected in our campus regulations.

Although I cannot respond to all comments, a few general statements will clarify some of the questions you have raised. The rules that go into effect today implement only those sections of the Universitywide policies that require action at this time. I have not repeated in the rules the many self-executing provisions of the Universitywide policies, such as the one prohibiting the use of University facilities "for the purpose of religious worship, exercise or conversion," nor have I attempted to define other, general provisions of those policies, such as the Standard of Conduct, a task which must have the thought and formal participation of students and faculty.

In the rules on procedural fairness, a "public, adversary hearing" includes the safeguards traditionally attending administrative hearings, including the confrontation and cross-examination of witnesses. These rules do not delineate internal administrative relationships, such as those providing for the Dean of Students to coordinate the decentralized regulation of facilities. Such matters will be administered through internal guidelines.

Finally, these rules make no

specific provision for fund-raising by organizations of University employees. Their activities may continue in accordance with past practices pending completion of a current study of the problem.

Several problems still remain. It is to these problems that we must now address ourselves, and on which I shall be requesting your aid in the coming months.

We need to establish the machinery for formal student consultation in the process of making and amending campus rules, including these provisional rules. For this important assignment, I have asked Professor John Searle to be my Special Assistant on Student Organizations. I am delighted to report that he has accepted and will begin work today.

He succeeds Professor Neil Smelser, who started work on these problems last semester and is now on a scheduled sabbatical leave. Professor Searle will begin at once to meet with students and faculty and to arrange preliminary programs of consultation. I urge all interested persons to offer Professor Searle their suggestions on these matters. He will study and recommend to me the role of students in developing and reviewing campus rules and also in assuring compliance with the rules.

I think it inevitable that a study of these problems will have to evaluate the extent to which broadly representative student government can be the focus of formal student participation.

We need also to resolve several other pressing issues. These include:

1. Universitywide standard of conduct. Our new machinery for consultation and decision should begin work promptly. We need understanding of what is expected of students and of the circumstances in which discipline is appropriate. We need to analyze what interests of the University and what norms of a university society require protection through University discipline.

We may want to draft a code of proscriptions that attempts to catalog the conduct that may be disciplined and the University interests served by discipline. Or, by building upon years of experience in developing agreed-upon norms, as in the common law, we might do better to avoid codification and its dangers — rigidity and divisive disagreements in the formulation of a code.

2. Electrically amplified sound in the Upper Student Union Plaza. Some people feel that voice amplification on the Sproul Hall steps provides the most meaningful form of free expression and advocacy on the campus. Others, as your comments to me show, feel that voice amplification at that place is contrary to the privacy of individuals and the possibilities of open discussion in a free speech area.

Pending a solution to this issue, these provisional regulations effect a kind of compromise by regulating how often one organization can use the amplifier.

Even while we complete the necessary task of establishing appropriate regulations for the conduct of student affairs, we can turn our attention to the possibilities that lie ahead. They are vast, exciting, and touch all aspects of University life. Within two weeks, there will begin a series of open meetings, sponsored by the Select Committee of the Academic Senate, in which students and faculty will be invited to share their views on education at Berkeley.

The Regents and the President are now encouraging our campus to recreate its organizational structure and to contribute, along with our sister campuses, to the

reordering of the University as a whole. The ASUC is developing plans to call a constitutional convention on student government. In short, the opportunity for all of us to participate in the life of a vital academic community is at hand.

Roger W. Heyns
Chancellor

September 16, 1965

REGULATIONS CONCERNING THE REGISTRATION OF STUDENT ORGANIZATIONS ON THE BERKELEY CAMPUS

1. Scope and Purpose

These regulations implement Section 11, C of the Universitywide Policies Relating to Student Conduct and Student Organizations, Use of University Facilities and Non-discrimination, issued by the President effective July 1, 1965, and are subject to the definitions and provisions of the Universitywide policies.

The organization and activities of registered student organizations are regulated in a number of respects by provisions of the Universitywide Policies that require no specific implementation in these regulations and are not repeated herein.

The purposes of these regulations are to promote the opportunities and advantages of association among students within the intellectual environment of the University and to assure that these benefits of the University will not be used in ways interfering with its educational responsibilities.

2. Registration of Student Organizations

a) An organization meeting the requirements of the Universitywide Policies may be registered upon filing with the appropriate office of the University:

i. At the time of registration, the name of the organization, a statement of its purposes, its requirements for membership (including fees), the method of selecting officers, and a copy of its constitution and bylaws, if it has them;

ii. At the time of registration and at the beginning of each semester thereafter, a list of its current officers, the name of its University advisor, and a statement that its active membership is limited to students and academic and administrative staff of the University;

iii. When they occur, amendments to any of the above.

b) The appropriate office of the University for filing is:

i. The Dean of Students, or

ii. Any college, school, or department, which agrees to act as the registering office, from which the organization draws the major portion of its members, and which will ordinarily be the only unit of the University significantly affected by the activities of the organization. Units of the University registering organizations will notify the Dean of Students when organizations are registered.

c) A registered student organization will be noncommercial in purpose and may have religious purposes.

3. Advisors to Organizations

Registered student organizations are urged to have a University advisor to provide continuity in programming and to assist the organization in operating in a manner which is consistent with the purposes of the University.

The advisor, to be chosen by the organization, should be a member of the faculty, a senior member of the administrative staff, or an individual approved by the Dean of Students or the unit of the University with which the organization is registered.

4. Use of University Name

Only an organization which is sponsored by the University or a

unit of the University or by the ASUC may use the name of the University or abbreviations thereof as a part of its own name.

A registered student organization may not use the name of the University or abbreviations thereof as part of its own name. Other terms, such as "campus" and "Berkeley campus," may be used by a registered student organization as part of its name.

REGULATIONS CONCERNING THE USE OF UNIVERSITY FACILITIES ON THE BERKELEY CAMPUS

1. Scope and Purpose

These regulations implement Sections 11, C, e and 111, A of the Universitywide policies Relating to Student Conduct and Student Organizations, Use of University Facilities and Non-discrimination, issued by the President effective July 1, 1965, and are subject to the definitions and provisions of the Universitywide Policies.

For the most part, these regulations authorize use of University facilities and establish procedures for authorized uses. The rights, obligations, and liabilities of authorized users and of other persons seeking to use the Berkeley campus are governed also by provisions of the Universitywide Policies and of state and federal law which do not require specific implementation in these regulations and are not enumerated herein. These regulations do not affect cooperative relationships with governmental agencies concerning use of University facilities.

The purpose of these regulations is to assure the full, effective use and enjoyment of the facilities of the Berkeley campus as an educational institution. Orderly procedures are necessary to promote the use of facilities by students and University personnel, to conserve and protect facilities for educational use, and to prevent interference with University functions.

2. Reservation of Facilities for Meetings or Other Events

(a) Available University facilities may be used and may be reserved in advance for meetings and other events by:

i. Registered student organizations, for events related to the purposes of the organization;

ii. Members of the teaching staff and administration, for events related to the performance of their duties;

iii. Organizations of University employees, for events related to the purposes of the organizations;

iv. The ASUC and its agencies, official alumni and similar University-related organizations, and colleges, schools, departments and other units of the University, for events related to their purposes;

v. Groups of ten or more students, for events related to their activities as students. As specified in the Universitywide Policies these groups may not invite non-University persons to address or perform at events; nor may they reserve voice amplification equipment.

(b) Registered student organizations, groups of ten or more students, members of the teaching staff and administration, and organizations of University employees should make reservations for facilities on forms provided for that purpose. The form will show the applicant's name and status in the University, the general nature of the event, its date and time, the facility requested, the names (if required under section 6 below) of non-University persons invited to speak or perform, and any special arrangements needed. Reservations should be made a reasonable time in advance of the event, preferably at least 48 hours, to permit scheduling to be arranged.

Reservations will be granted in the order of application, unless considerations of format, room size, equitable distribution of special facilities, or the like require adjustments. Reservations should be made through the Dean of Students, except for the following facilities:

Facility

Alumni House
Cafeteria and Dining Commons
Rooms in Student Union complex, Lower Student Union Plaza, and Senior Men's Hall
Strawberry Canyon Recreational Area: Haas Clubhouse, pool and picnic area
Tennis courts and Athletic Fields
University Rooms and Auditoriums, Greek Theatre, Harmon Gymnasium, Hearst Gymnasium

Where to Make Reservations

Alumni House
Food Service Manager,
111 Dining Commons
Reservation Service,
200 Eshleman Hall
Strawberry Canyon Recreational Area Office
Chairman, Department of Physical Education, or Intercollegiate Athletics Director, as appropriate
Office of the Registrar,
120 Sproul Hall

In addition, certain buildings, indoor areas, or outdoor areas of the campus are physically situated in such a way that activities occurring there ordinarily significantly affect only one college, school, or department. Areas so associated with a particular unit of the University will be identified by agreement between that unit and the Chancellor at the request of such unit.

With respect to any building or area so identified, the Chancellor may delegate to the appropriate unit of the University authority to make rules consistent with these regulations. Facilities so identified should be reserved through the appropriate unit of the University.

(c) Procedures for reserving facilities in open discussion areas are established in Regulations Concerning the Time, Place and Manner of Public Expression on the Berkeley Campus.

(d) The ASUC and its agencies, official alumni and similar University-related organizations, and colleges, schools, departments, and other units of the University should make reservations in accordance with procedures now in use.

3. Charges for the Use of Facilities

(a) The University may make reasonable charges to registered student organizations, groups of ten or more students, members of the teaching staff or administration, and organizations of University employees, based on the cost to the University for:

i. Special arrangements needed by the user of the facility which impose identifiable costs on the University, and

ii. Identifiable increments to the University's operating or overhead expenses, other than for police services, imposed by the use of the facility.

The University may make reasonable charges against registered student organizations for the rental of its facilities for events open to the public and for which donations are solicited.

(b) Arrangements concerning charges, if any, should be initiated between the unit of the University through which the facility is reserved and the person, group, or organization making the reservation.

(c) Records of all such arrangements, showing the events for which charges were made, against whom, and the amount and basis

Regulations Issued Today

of the charges, will be public.
 (d) Charges, if any, for the use of University facilities by the ASUC and its agencies, official alumni and similar University-related organizations, and colleges, schools, departments and other units of the University will be made in accordance with procedures now in use.

4. Fund Raising on the Campus by Registered Student Organizations

(a) Subject to Regulations Concerning the Time, Place and Manner of Public Expression on the Berkeley Campus, a registered student organization may sell materials clearly related to the purposes of the organization and may collect dues, initiation fees, donations, and admission charges at tables, in open discussion areas and at meetings, and may solicit funds in announcements, posters and hand bills.

(b) A registered student organization using the campus to raise funds must keep adequate records showing the means by which funds were raised on the campus, the uses for which the funds have been or will be spent, and the amounts thereof.

In the event of complaints giving reasonable grounds to believe that funds raised through use of campus facilities were not used for the general purposes of the organization or for a related specific purpose for which they were raised, these records must be available for inspection.

5. Fund Raising on the Campus by Other Organizations

(a) The ASUC and its agencies, official alumni and similar University-related organizations, and colleges, schools, departments and other units of the University may use campus facilities for fund raising in accordance with procedures now in use.

(b) In recognition of the University's obligations as a major employer in the community and to the promotion of education, the Chancellor will approve a limited number of fund-raising programs by charitable organizations and public service agencies.

(c) Except as provided in these regulations, fund raising on the Berkeley campus is prohibited.

6. Invitations to Non-University Speakers to Use University Facilities

(a) A registered student organization inviting a non-University person to address or perform at a meeting or other event on the campus must give notice of the name of the invited person to the Dean of Students or other unit of the University having authority to make rules for the facility to be used. The notice must be made a reasonable time, preferably at least 48 hours, before the meeting or event is to occur. The notice should ordinarily be given at the time the facility is reserved.

(b) In accordance with the traditions of a University community, audiences should be allowed to ask questions of speakers unless considerations of time limitation, form, or the like indicate otherwise.

(c) If the Chancellor finds a reasonable likelihood that good order will not be maintained at a meeting to be addressed by a non-University person invited by a registered student organization, he may require that the meeting be chaired by a member of the teaching staff or administration. In such instances the University will assist the organization in securing a chairman.

REGULATIONS CONCERNING THE TIME, PLACE AND MANNER OF PUBLIC EXPRESSION ON THE BERKELEY CAMPUS

1. Scope and Purpose
 These regulations implement Section 11.B.b of the University-

wide Policies Relating to Student Conduct and Student Organizations, Use of University Facilities and Non-Discrimination, issued by the President effective July 1, 1965, and are subject to the definitions and requirements of the Universitywide Policies.

Other sections of the Universitywide Policies and state and federal laws that may protect or regulate matters of public expression on the Berkeley campus must be observed, but they require no specific implementation in these regulations and are not enumerated herein.

The purposes of these regulations are to assure the right of free expression and advocacy, to minimize conflict between the form of exercise of that right and the rights of others in the effective use of University facilities, and to minimize possible interference with the University's responsibilities as an educational institution.

2. Outdoor Meetings and Other Events

(a) Students and University personnel may gather at reasonable places and times on the campus consistent with the orderly conduct of University affairs and the free flow of traffic. Interference with entrances to buildings and University functions or activities, disturbances of offices, classes and study facilities, and harm to property is prohibited.

(b) The Lower Student Union Plaza, the Upper Student Union Plaza, the Wheeler Oak area, and the North Gate are available as open discussion areas.

(c) Voice amplification will be permitted in the Lower Student Union Plaza and from the Sproul Hall steps in the Upper Student Union Plaza between 12 noon and 1 p.m. and between 5 p.m. and 7 p.m. Voice amplification equipment will be provided by the University, upon request and without charge, and no other voice amplification equipment may be used.

The Dean of Students may arrange for voice amplification at other times or places on the campus if unusual circumstances require it to implement the purposes of these regulations. The volume and direction of voice amplification will be adjusted to reach no further than the audience present.

3. Advance Reservations for Outdoor Meetings and Other Events

(a) Space in open discussion areas may be reserved for meetings or other events by users authorized under Regulations Concerning Use of Facilities on the Berkeley Campus. Other outdoor areas may be reserved if circumstances so require to implement the purposes of these regulations. Voice amplification equipment must be reserved in advance. Reservations should be made through the Dean of Students.

(b) Reservation for particular spaces or equipment will be made in the order of application.

(c) In order to accommodate the rights of individuals and small groups to engage effectively in public discussion without voice amplification in the Upper Student Union Plaza, no applicant may reserve voice amplification equipment in the Plaza more than once in any week.

(d) Reservations should be made on forms provided by the Dean of Students. The form will show the applicant's name and status in the University, the general nature of the event, its date and time, the names (if required under Regulations Concerning Use of Facilities on the Berkeley Campus) of non-University persons invited to speak or perform, and any special arrangements needed. Reservations should be made a reasonable time, normally not more than two weeks and preferably at least 48 hours, in advance of the

event, to permit scheduling to be arranged.

4. Tables

(a) Registered student organizations may maintain a table at a specific location mapped by the Dean of Students in each of the following areas:

- i. Either the Bancroft and Telegraph entrance, Sather Gate, the area east of the low concrete wall east of the Golden Bear Restaurant, or the fountain area;
- ii. Lower Student Union Plaza;
- iii. North Gate;
- iv. the Tolman Hall area; and
- v. Between Kroeber Hall and the Law Building.

Specific locations for tables are available on a daily first-come, first-served basis.

(b) Tables should be manned at all times by students or University personnel. The name of the sponsoring organization must be displayed at each table.

(c) Tables should be the approximate size of a standard card-table. Posters may be attached to the sides of tables but no poster or other structure should extend beyond the table or be erected above the top of the table.

(d) Tables may be used to distribute free of charge and to exhibit non-commercial announcements, statements, and materials and for fund raising. Distributing, soliciting or selling by means of accosting individuals or by hawking or shouting is prohibited.

5. Posters, Notices, Handbills

(a) University personnel, students, and registered student organizations may have non-commercial announcements posted on the University's general-purpose bulletin boards. Announcements to be posted should be brought to 201 Sproul Hall and will be posted by the University.

Announcements should not exceed 11"x14" in size and will be removed at routine times. Announcements should indicate the name of the person or registered student organization on whose behalf the announcement is posted.

(b) University personnel, students and registered student organizations may exhibit portable non-commercial announcement or statements, of a size appropriate to standard portable easels, at the following locations:

- i. North Gate
- ii. Sather Bridge
- iii. Moses Court
- iv. Engineering Quad
- v. Library Annex Plaza
- vi. Outside southeast entrance of Life Sciences Building
- vii. Lower Student Union Plaza

Exhibits should indicate the name of the sponsoring person or organization.

(c) University personnel and students may personally distribute free of charge non-commercial announcements, statements, or materials at any reasonable outdoor area on the campus consistent with the orderly conduct of University affairs, the free flow of traffic and persons, and the maintenance of University property.

Efforts must be made to avoid litter. Distribution by means of accosting individuals or by hawking or shouting is prohibited. Announcements or statements should indicate the name of the distributing person or the registered student organization on behalf of which the distribution is made.

(d) Use of ASUC bulletin boards and kiosks will be in accordance with ASUC rules.

(e) Except as permitted herein, no poster, handbill, or any other form of announcement or statement may be placed on, attached to, or written on any structure or natural feature of the campus such as the sides or doors of buildings, the surface of walkways or roads, Sather Gate, posts, waste receptacles, trees or stakes.

6. Decentralized Regulation by Particular Colleges, Schools and

Departments

(a) Certain buildings, indoor areas, and outdoor areas of the campus are physically situated in such a way that activities occurring there ordinarily significantly affect only one college, school, or department. Areas so associated with a particular unit of the University will be identified by agreement between that unit and the Chancellor at the request of such unit.

With respect to any building or area so identified, the Chancellor may delegate to the appropriate unit of the University authority to make rules consistent with these regulations.

i. Permitting advance reservation of outdoor space and permitting voice amplification in addition to that provided for under Section 2 above;

ii. Permitting the maintenance of tables in addition to that provided for under Section 4 above;

iii. Permitting the posting, exhibiting, and distributing of non-commercial announcements, statements, and materials in addition to that provided for under Section 5 above.

(b) Use of department bulletin boards will be in accordance with rules issued by the department.

REGULATIONS CONCERNING PROCEDURAL FAIRNESS IN STUDENT DISCIPLINE CASES

1. Scope

These regulations implement Section 11.E.a of the Universitywide Policies Relating to Student Conduct and Student Organizations, Use of University Facilities and Non-discrimination, issued by the President effective July 1, 1965, and are subject to the definitions and provisions of the Universitywide Policies.

Except as otherwise specifically provided herein, these regulations do not affect any existing jurisdiction, power, or practice of University officials or student judicial or other disciplinary committees; nor do they affect any existing rights of appeal within the University. These regulations are designed to assure procedural fairness in student conduct cases and are not in derogation of rights assured by other University policies or by law.

2. Procedural Safeguards in All Cases

(a) These regulations contemplate disciplinary action both of the types described in Appendix C of the Universitywide Policies and in the form of sanctions denying use of University facilities. In any proceeding before any individual or committee authorized to impose in the first instance or to recommend disciplinary action, the following procedural safeguards will apply:

i. The student shall be given written notice of the charges against him.

ii. The student is entitled to an impartial hearing.

iii. He shall be told the evidence against him and identity of its sources, and is entitled to present evidence in his own behalf.

iv. No ex parte communications will be received.

v. The student may be accompanied by an attorney or other advisor.

vi. No one will be required to give self-incriminating evidence.

vii. An adequate summary of the proceedings will be kept.

viii. The student will be informed of the recommendation.

(b) If discipline more severe than that recommended by the individual or committee is finally imposed, the Chancellor or other person imposing such final discipline will familiarize himself with the record and evidence and will not consider new evidence unless its content and sources have first been told the student.

3. Public Hearings

In any proceeding before the Faculty Committee on Student Conduct in which disciplinary ac-

tion as severe as suspension may be imposed, or in any proceeding in which a sanction denying use of University facilities may be imposed, the student may request a public, adversary hearing.

Upon such request, the case will be heard and a recommendation made to the Chancellor by an impartial hearing officer selected by the Chancellor from a panel of members of the Academic Senate. The panel will be nominated annually by the Committee on Committees of the Berkeley Division and may be composed of ten or fewer members.

4. Interim Action

Pending final determination of cases in accordance with these regulations, the Chancellor may, independently of Section 2 above, impose warning or interim suspension upon a student when circumstances warrant such action. The Chancellor will inform the student in writing of the reasons for the interim action.

Year-round School, No Demonstrations Asked by Brown

SACRAMENTO (AP)—California must consider new educational concepts — like junking the nine-month public school year in favor of year-around classes—to keep pace with the "knowledge explosion," Gov. Brown said yesterday.

In a speech prepared for delivery at the first governor's Conference on Education, Brown told leading educators the state must make better use of its classrooms and its top teachers to meet the challenges of a booming school-age population.

At the same time, the governor called on California's college and university students to abandon off-campus demonstrations and picket lines and turn their idealism toward curing the social ills and solving the educational failings of the state.

Noting that one-fourth of the state's population now is in school, and that the figure is increasing each year, Brown called for a new commitment to education. And he warned part of the commitment would have to be financial.

In order to continue a state educational program that currently embraces more than 4.12 million students from the first grade through college, Brown said "there will have to be new taxes" because "the state tax base is no longer expanding as fast as expenditure requirements." The reason, he added, was that:

"Last year, close to half of California's population was under 25 years of age. The vast majority of these youngsters do not pay taxes. Yet they consume—for education alone—53½ cents of every dollar the state spends each year."

Talking of the "knowledge explosion," Brown said "we still try to teach the old knowledge—along with the new—in the same given time . . . children still go to school six hours a day, five days a week . . . they still take the entire summer off, just as they did a hundred years ago when they were needed to harvest crops . . ."

Brown said colleges and universities have seen the advantages of year-around education, "but this trend must move down into the lower schools."

He also assailed assigning "most of the best teachers to the best schools and most of the new, inexperienced teachers . . . to the slums."

WANTED

to take lecture notes. Upper-division or graduate students with some writing experience

Starting Pay — \$9.00 per lecture

Apply immediately.

FYBATE LECTURE NOTES

2440 Bancroft—near of east mall.

HAIR PIECES

CHIGNONS SWITCHES

Hand made to match your hair

\$17.95

Have your Tovar Chignon made by a specialist in her private salon.

The cost is no more and is made by an expert. Call for appointment. Open 11 to 6 p.m. Phyllis Jennings is a specialist with years of experience.

Phyllis Jennings

Formerly at City of Paris, I. Magnin

133 Geary St. Salon 723
San Francisco

GA 1-8031
Nights WA 1-6902

Smoker Tonite For Engineers

There's going to be another men's smoker.

Sigma Phi Delta is sponsoring a men's smoker for entering engineers. There will be a chance to meet professors and get acquainted with the University's academic and social life.

Dentistry School Sending Advisor

All pre-dental and pre-dental hygiene students may seek advice from a representative of the School of Dentistry who will be on campus tomorrow, in 125 Dwell Hall.

Examples of the Performance Test will be shown and appointments to see Mrs. Monti.

Correction

Due to incorrect information received from the Free Student Union, the Daily Californian incorrectly stated in Wednesday's paper that the Dick Gregory program would take place this Friday. The correct date for the

FSU-sponsored event is next Friday, September 24.

Purpose of the program is to raise money for the Free Speech Movement defense fund. A donation of 75 cents is requested.

Beer Signs on Sale at Auction

Items for interior decoration—including prints, travel posters, and beer signs—will go on the Chinese auction block for the benefit of the University YWCA, 2600 Bancroft Way, from 2 to 5 p.m., tomorrow at 2600 Bancroft Way.

A Chinese auction operates with a pre-determined time limit on bidding—the item is automatically sold to the person who bids at the end of the allotted period.

Items for sale will be displayed today at the YWCA.

Solons to Conduct Inquiry

State Assembly Speaker Jesse M. Unruh has designated five assemblymen to complete a joint legislative committee that will investigate higher education in California, particularly the University system.

The committee will conduct an 18-month inquiry. Unruh, author of the legislation forming the committee, and Speaker Pro Tempore Carlos Bee are among the Assembly members. Included in the Senate committee is San Francisco Senator J. Eugene McAteer.

Unruh said the general purpose of the investigation was the necessity for the people's representa-

tives to fully understand the University system.

"The legislature," he said, "cannot possibly be expected to make intelligent decisions on the future course of this great enterprise unless fully informed. No public trust should be immune from the necessity of explaining its operation, and major proposed changes in those operations, to the people, and that includes our institutions of higher learning."

Unruh said in answer to speculation that this campus would be a prime target for the probe:

"I think that it is clear that there will be no isolated 'investigation' of the student-faculty problems at Berkeley which might have caused last December's demonstrations there.

"Instead, he said, this committee will delve much more deeply into the development of both the University and the state colleges, in an effort to determine whether a reorganization of both systems might result in an improved, and less impersonal, educational system for California and its citizens."

The other Senate members of the committee, aside from McAteer, are: President Pro Tempore Hugh M. Burns (D); Albert L. Rodda (D); John Holmdahl (D); and Donald Grunsky (R).

The Assemblymen appointed to the committee included James Mills (D), chairman of the Assembly Rules Committee; Robert Stevens (R); and Gordon Duffy (R).

The committee will meet early this month to organize itself and to select a chairman.

FSU Slates Rally Today

The Free Student Union is continuing its series of orientation-discussion programs this week.

A noon rally will be held today in Sproul Plaza concerning . . . "the new chancellor; new rules; and how to get a co-op bookstore."

An 8 p.m. meeting in Wheeler Auditorium featuring Hal Draper, representatives of the Vietnam Day Committee, Students for a Democratic Society, and possibly representatives of foreign student movements, will participate in a panel discussion on "Where is the Student Movement in Berkeley Going?"

Contrary to the incorrect information given the Daily Californian by the FSU and printed in yesterday's paper, Dick Gregory will not be appearing in Harmon Gym Friday. His benefit concert for the FSM defendants will be next Friday, Sept. 24th. A donation of 75 cents will be requested.

Typewriters in S.O.B. Library

Electric typewriters will be installed in Eshleman Library within the next two weeks to accommodate students who have objected to the typewriter rental services provided by the University Library.

The ASUC made the decision to install the typewriters because it received so many complaints about the "beat-up" typewriters in the University Library, according to Tim Lyons, ASUC First Vice President.

Lyons said the ASUC typewriters would be rented for 25 cents an hour while the Library charges 25 cents for 40 minutes.

The library has 14 typewriters available for rent, none of which are electric.

Lyons said the ASUC hoped by this action to make the Library improve the quality of their typewriters.

A spokesman for the Library Administration said the ASUC plan to put in typewriters "sounded good" but the Library would not be affected.

"It won't change" said the spokesman.

Eshleman Library, where the ASUC typewriters will be available, is on the seventh floor of Eshleman Hall, the Student Office Building.



CHECK THE ACTION

In Our Budget Shop

Short Sleeve Shirts \$3.69
3 for \$10.99



2576 Bancroft Way
Directly Across from the Campus

The Oakland Civic Ballet Company
presents

SEPTEMBER CONCERT

Saturday, Sept. 25, 8:30 p.m.

Berkeley Little Theatre
Grove Street and Allston Way
Berkeley

Adults \$2. Students \$1.25

Seats available ASUC, Sherman-Clay and at the door

harpsichord

A superb, authentic, full toned instrument, same as owned by Philadelphia Orchestra and the Metropolitan Opera

In kit form for home assembly \$150.
Also Clavichord kit \$100



Free Brochure. Write or Phone:
zuckermann harpsichords
Dept. C, 1211 Evelyn Avenue
Berkeley, California
LA 4 8730

MEN WANTED TO WORK WITH TROUBLED BOYS

The Interpersonal Relations Project of Stiles Hall needs fifty male students to work as companions with 5th and 6th grade school boys. This is an experimental project exploring ways in which students can help young boys overcome some of their difficulties in getting along with others.

- Each pair will share activities of mutual interest
- Students of all majors, races, ages, etc., needed
- Work starts in early October
- Six to nine hours per week
- Sensitivity training program
- \$1.40 per hour

Interested students can find applications and additional information at Stiles Hall, 2400 Bancroft Way (841-6013), at the Institute of Human Development (Tolman Hall), or at the Placement Center. **APPLY NOW.**

Come to Mademoiselle
Berkeley Square
For your Campus Fashions



Get Into the Swing with Pandora Campus Mates

Pretty plaid, pleated plaid, have both in this all wool skirt with the "in" look. Top it with color mated wool cardigan with matched ribbon trim.

SKIRT (5-13) 13. CARDIGAN (34-40) 13.

Solid swinging "a" line bonded wool skirt, with its own matching shag-spun wool pullover. Zip-up back and long skinny sleeves.

SKIRT (5-13) 10. SWEATERS (34-40) 12.

Mademoiselle

115 BERKELEY SQUARE
Open Thursday to 9

Meyerson to Help Save Bay

Martin Meyerson, 43, dean of the College of Environmental Design and former acting Chancellor was named yesterday to a five-man commission established to prevent destruction of San Francisco Bay.

Governor Brown named Melvin B. Lane, 43, executive vice president of Lane Magazine and Book Co., to head the commission.

Other persons named to the commission include Joseph L. Eichler, 65, president of Eichler Homes, Inc.; commission vice-chairman Mrs. Dorothy Erskine, 69, a San Francisco resident and

an officer of several conservation and planning groups; John H. Sutter, 37, Oakland attorney and chairman of the Citizens for Regional Recreation and Parks. All but Lane are Democrats.

The commission's task as outlined by Brown will be to formulate a comprehensive and enforceable plan for the conservation of San Francisco Bay and the development of its shoreline. The commission will hold its first meeting Sept. 23 in San Francisco and will eventually have 27 members, including representatives of state, federal, county, and city governments.

For the discerning
JOIN THE DAILY CAL

MOVIES

BERKELEY THEATERS

BERKELEY 2425 Shattuck Thornwall 8-4300

"7 BRIDES FOR 7 BROTHERS"
Howard Keel, Jane Powell
— also —
"THE TRAIN"
Burt Lancaster

CINEMA Shattuck & Haste Thornwall 8-2038

Signore Signoret, Lawrence Harvey in
"ROOM AT THE TOP"
— plus —
Jean Paul Belmondo, Claudia Cardinale
"LA VIACCIA"

GUILD Telegraph & Haste Thornwall 8-2038

Ozu's
"EARLY AUTUMN"
— and —
Antonioni's
"LA NOTTE"

STUDIO Telegraph & Haste Thornwall 8-2038

Von Stroheim's
"GREED"
— and —
Eisenstein's
"POTENTIN"

California Kittredge & Shattuck 848-0620

"VON RYAN'S EXPRESS"
Frank Sinatra
— and —
"HUSH, HUSH SWEET CHARLOTTE"
Bette Davis

ALBANY Solano at San Pablo LA 4-5656

"SONS OF KATIE ELDER"
Dean Martin & John Wayne
— and —
"GIRLS ON THE BEACH"

NORTHSIDE 1828 Euclid TH 1-2648

STUDIO A —
Fellini's
"8 1/2"
Marcello Mastroianni, Claudia Cardinale
— and —
"EMPTY CANVAS"
Betty Davis, Arthur Kennedy

STUDIO B —
"BLACK ORPHEUS"
Winner Grand Prize Cannes Film Festival
— and —
Jules Wassin's
"PHAEDRA"
Tony Perkins, Melina Mercurie

United Artists 2274 Shtk TH 3-1487

"MURIETTA"
Jeffrey Hunter, Arthur Kennedy
— and —
"ROBIN AND THE 7 HOODS"
Frank Sinatra, Dean Martin

OAKS Solano at Alameda LA 6-1836

"BILLY"
Patty Duke
— and —
"MR. MOSES"
Robert Mitchum

ELMWOOD 2964 College TH 8-0931

"YELLOW ROLLS ROYCE"
— and —
"OPERATION SNATCH"
Terry Thomas, Dennis Price

UC 2936 University Ave. 843-6267

The Beatles in
"HELP!"
— and —
"LOVE IS A BALL"
Glenn Ford, Hope Lange

OAKLAND THEATERS

Paramount 2025 Broadway TW 3-2300

"PARIS SECRETS"
— and —
"MODEL MURDER CASE"

Grand Lake 3200 Grand GL 2-3556

"ONCE A THIEF"
Alain Delon, Ann Margaret
— and —
"SIGNPOST TO MURDER"
Joan Woodward

Parkway Park Blvd. near Lake Merritt GL 2-3391

"THE COLLECTOR"
— and —
"BANANA PEEL"

TOWER 5110 Telegraph Ave. OL 3-8022

"HMS DEFIANT"
— and —
"LORD JIM"

ROXIE 519 - 17th St. TW 3-3311

"MY FAIR LADY"
Rex Harrison, Audrey Hepburn

Piedmont 41st & Piedmont 654-2727

"SANDPIPER"
— and —
"JOY HOUSE"

SAN FRANCISCO

CEDAR ALLEY CINEMA

Centrally located on Cedar St. off Geary and Larkin near Van Ness PR 6-8300
A new professionally equipped art house seating 250.

Jeanne Moreau, Oskar Werner
"JULES AND JIM"

Bill's MEN'S SHOP SHOES

1965 CAMPUS

BONANZA

If you're at Cal you're invited. Enter Bill's Bonanza Give-Away of 1965, now. Drawing will be held at Bill's Friday Oct. 1 at 5 p.m. No purchase necessary. Get a free entry blank every time you come in Bill's.



SPORT COAT

Traditional wide wale Corduroy. Whiskey & Beach Leaf shades. 36 to 46. **21.50**

SHOES

Penny loafer traditionals, Wax tan finish. Sizes 7 to 12. **15.95**

WHITE LEVIS

America's favorite. Colors white, green, faded blue, black. **4.25**

INDIA MADRAS

Shirts. Guaranteed to bleed. Best selection of colors. S M L sizes **5.00**

MADRAS JACKETS

Reversible to Navy. 36 to 44. Excellent assortment of colors. **14.95**



SWEATERS

V-neck, long sleeve saddle shoulder. Beautifully made in Lovat, Burgundy, Navy, Black. 36 to 46. **10.95**

BONANZA

FIRST PRIZE

\$100⁰⁰ WARDROBE

- Harris Tweed Sport Coat
- Wool Slacks
- 2 Pairs Levi Casuals
- 3 Pair Socks
- 3 Tee Shirts (Jockey)
- 3 Jockey Briefs
- Arrow Shirt
- Necktie (by Talbot)

2nd PRIZE

\$21.50 Corduroy Sport Coat

3rd PRIZE

- 2 White Levi's value 4.25 each
- 2 Pair Crew Sox value 1.00 pair
- Leather Belt value 4.00

NEXT SIX PRIZES

- 2 Pair White Levi's value 4.25 each

BONANZA BONUS PRIZE

Pair of JARMAN \$20.00 Wing Tip SHOES — with winning First prize ticket... if you present a current Bill's sales receipt.



Remember, no purchase necessary. Come in for entry blank.

Bill's MENS SHOP

2386 TELEGRAPH AVENUE • BERKELEY
PHONE — 848-5436

READ YOUR CLASSIFIED ADS

PRESIDENT'S AND CHANCELLOR'S RECEPTION FOR NEW STUDENTS

All new undergraduate students who are registering for the first time this semester or who registered for the first time last February are cordially invited to attend the President's and Chancellor's Reception on Monday evening, September 20, at 8:15 p.m., in the Student Union. Admission is by printed invitation only. Students who did not receive invitations by mail are invited to obtain them in the Office of the Dean of Students, 201 Sproul Hall, any time before the reception.

All new undergraduate students will be welcome at the Reception.

New Student Guidelines

Heyns Issues Campus Rules

(Continued from page 1) made in the wording of the new regulations.

The Chancellor in his statement said that over 100 communications about the rules were received. He

Monk Speaks On Buddhism

A Sinhalese Buddhist monk will speak at 8 p.m. Friday at the Buddhist Churches of America Study Center, 2121 Channing Way.

The Venerable Piyatassi, who comes from Colombo, Ceylon, will discuss "Buddhism as a Way of Life." Author of numerous books on Buddhism, he is presently research associate with Harvard's Center of World Religions.

The public is invited to attend the evening lecture.

Rally Committee To Hold First Bonfire Rally

The first giant bonfire rally of the football season will be presented tomorrow night at 8 p.m. in the Greek Theater.

The rally is being sponsored by the California Rally Committee in hopes of spurring the Golden Bears on to victory against Notre Dame Saturday afternoon.

The wearing of red to the rally is taboo and no one wearing red will be admitted.

also said that "many of the proposals for change have been adopted."

Searle also said that one basic aim of the administration was to increase the participation of the students in the rule-making process.

Several other points about the rules were raised in the conference.

The regulations state that a registered student organization's "active membership is limited to students and academic and administrative staff of the University."

Cheit said a working definition of "active member," pending further discussion, is a member who has "the right to vote and

hold office."

In response to a question about the issue of possible "subtle jeopardy" under both University regulations and civil law, Cheit taken for violations of the norms said disciplinary actions would be of the University regardless of the civil law.

Cheit referred to the Chancellor's statement on University-wide standard of conduct when asked how the norms of the University would be determined.

Cheit said the Chancellor had flown to Berkeley Tuesday night in order to work on the new rules. The Chancellor then went to Los Angeles and will return to Berkeley late tomorrow night.

UC Professor's Death

(Continued from page 1) Agricultural Experiment Station.

Jenkins was born August 6, 1904, at Regina, Canada. He received his B.S. degree at the University of Saskatchewan, Canada, in 1927 and his M.S. in 1929. He obtained his Ph.D. here in 1936.

Jenkins held the position of Laboratory Instructor of Biology at Saskatchewan from 1927-28 and was Bursar with the National Research Council of Canada from 1928-29. He worked with the Carnegie Institute from 1933-35.

Jenkins came here in 1935 as an associate professor at the Agricultural Experiment Station and was made a full professor in 1955.

He was considered one of the top experts on tomatoes in California and was working on a

three-year grant from the U.S. Public Health Service. The project, entitled "Morphogenetics Study of Leaf-Shape Mutants in the Tomato," studied the relationship of tomato genes to the shape of the tomato plant.

In the past, Jenkins has been interested in the origins of modern tomatoes.

At the time of his death, Jenkins was planning a new course, "Developmental Genetics." No one as yet has been named to teach his courses.

Holder of two Guggenheim Fellowships from 1945-46, Jenkins was also a member of Phi Beta Kappa and the Genetics Society of America. He was also associated with several other scientific organizations.

Student Tours

Orientation tours for new students will be conducted by Alpha Phi Omega service fraternity today at 10 a.m. and 2 p.m. at Ludwig's Fountain.



WIN a new Polaroid Camera from LEVI'S

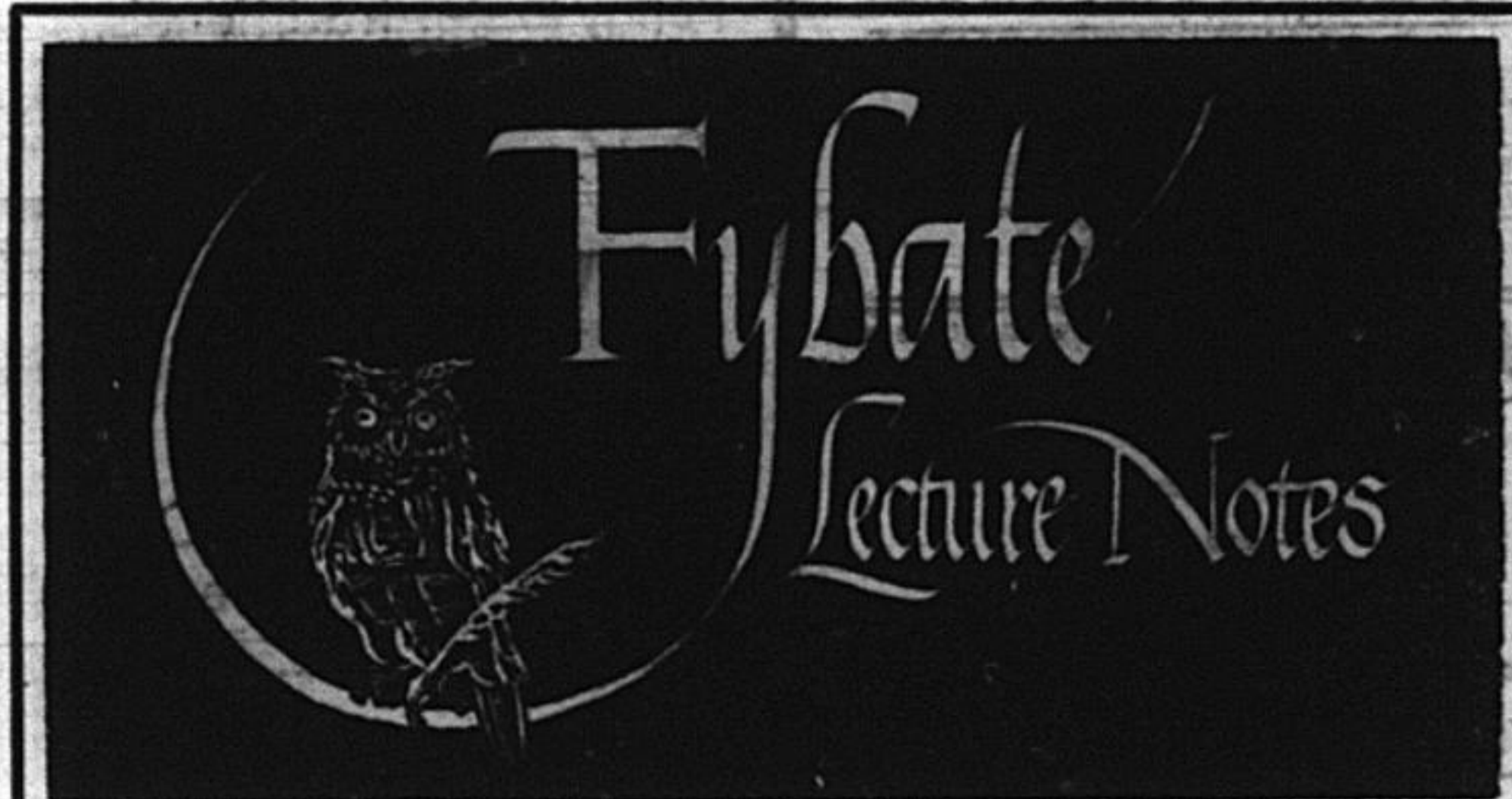
It's the "instant snapshot" camera you've always wanted! Crystal-clear black-and-white photos ready for your album in 10 seconds! Works indoors and out, rain or shine!

Not a contest! Nothing to buy!
Come in for details!

2386 TELEGRAPH

Bill's MEN'S SHOP SHOES

NEAR DURANT



COMPREHENSIVE NOTES AVAILABLE NOW!

- | | | |
|---|---------------------------------------|---|
| Anthro 1, 2A, 118, 130 | French 39A, 39C | Philos 6A, 6B, 20A, 20B |
| Arch 121 | Geography 1, 131 | Physics 2A, 2B, 4A, 4B, 10 |
| Art 1A, 1B | Geology 10 | Physio 1 |
| Astronomy 1 | History 4A, 8A, 17A, 134A, 151A, 189A | Poli Sci 1, 2, 15, 101, 118A, 120, 141A, 162, 163 |
| Botany 1, 10 | Italian 39A | Psych 1A, 1B, 5, 140, 168 |
| Bus Ad 118 | Linguistics 35 | Public Health 200A |
| Chem 1A, 1B, 5, 8 | Math 1B, 2B, 3A, 3B, 16A | Slavic 39 |
| Classics 10A, 17A, 28 | Music 27A | Soc 1, 109 |
| Econ 1A, 1B, 103A, 130 | Paleo 1, 10 | Zoo 1A, 10, 100, 101 |
| English 1B, 30, 44A, 46A, 46B, 117A, 117S, 121, 130B, 130C, 155, 158B | | |

—plus some new currents

AVAILABLE SOON: English 125C

Sir Gawain: a literal translation

2440 Bancroft Way TH 3-8080
Campus Bancroft Building



CHECK THE ACTION

In Our Budget Shop

Lambs wool Sweaters
Crew neck or V-neck
Saddle-shoulder
\$10.99

bruce bary

2576 Bancroft Way
Directly Across from the Campus

ASUC STORE OPEN EVERY NIGHT (except Monday) NEXT WEEK

T.A. CUTBACK THREAT TO UNIVERSITY

AN OPEN LETTER:

Last June, the legislature cut the budget of the University for the purpose of eliminating 372 teaching assistants. Although the Regents cannot be required to make specific budgetary changes, and indeed, are constitutionally charged with maintaining the autonomy of the University, the legislature made its wishes clear and the Regents complied. 264 T.A. positions—more than one-fifth of those usually employed here—were cut from the Berkeley campus.

Further budgetary cuts reduced the number of tuition waivers to out-of-state and foreign students by one-sixth. At the same time, the non-resident tuition fee was sharply increased from \$600 to \$800.

Whatever the reasons for these outrageous actions, it is clear that their effect would be a sharp decline in the quality of undergraduate education. Section sizes would have to be increased and course enrollments curtailed. Some courses presently taught with teaching assistants would lose them, and the level of personal contact between student and instructor would deteriorate. Similar educational limitations confront the graduate students. T.A.'s would be faced with accepting an increase in an already heavy workload or loss of financial support. And if financial support is not available, many graduate students would be forced to go elsewhere.

It is the policy of the Union of University Employed Graduate Students (Local 1570, American Federation of Teachers, AFL-CIO) that these conditions shall not exist on the Berkeley campus.

We demand that the funds be restored at the September 20 Special Session of the Legislature, and that the University take all possible action to accomplish this. In any case, we demand that the Regents exercise their Constitutional Authority to re-allocate funds to maintain the number of teaching assistants and tuition waivers, at least at last year's level.

In the interest of preserving the quality of education on the Berkeley campus, we present the following demands:

1. The ratio of students to instructor in sections shall not be increased.
2. Readerships shall not be created to replace positions previously held by teaching assistants.
3. Section meetings shall not be eliminated from courses that have had them in the past.
4. Graduate students, who under normal conditions, would be supported, shall receive that support.

**THE UNION WISHES THE UNIVERSITY COMMUNITY TO KNOW
THAT IT WILL TAKE APPROPRIATE ACTION TO INSURE THAT
THESE DEMANDS ARE MET.**

Executive Committee

UNION OF EMPLOYED GRADUATE STUDENTS,

Local 1570, American Federation of Teachers, AFL-CIO

Rally — Sproul Hall Steps — 12 Noon Today

It's About Time

Graduate student Mark Van Loucks intends to file a suit against ASUC President Jerry Goldstein and perhaps against other members of the ASUC for alleged misuse of ASUC funds.

He contends that the \$400 check — for a civil suit against the Regents — donated to the four ex-students involved in last semester's obscenity case is a misuse of ASUC funds.

The ASUC Senate considered the suit against the Regents as a test case to determine whether or not the term "conduct unbecoming a student" is unconstitutionally vague as the four are charging. It was on the charge of "conduct unbecoming a student" that the four were dismissed and suspended.

The case is certainly a poor one for determining the constitutionality of the charge. Because obscenity is such an emotional issue the four ex-students may have a better than reasonable chance of losing and the Senate's attempt to liberalize disciplinary rules may fail.

In another sense the donation may prove a bad idea—the court may never come to grips with the real question of the constitutionality of the charge "conduct unbecoming a student"—it may rule on other grounds.

However a test case on this issue is long overdue and the ASUC Senate is very much within its power in attempting to settle an issue so directly concerning the students.

The Senate was also within its power in giving the money to only one party of the test case. Obviously the Regents don't need the money—but giving it to the former students makes the test case possible. Even if the Regents had needed the money the Senate is within its rights in taking a side in an issue of so much concern to students.

Mr. Van Loucks' case against the ASUC officers will fail we hope. If no connection can be found between the duties of the ASUC Senate and student discipline—if the Senate must return to playing in the sandbox—we fear for the ASUC.

Review

Slate Supplement Old Hat

By BILL ROWEN

As the years roll on, the Slate Supplement to the General Catalogue becomes more and more venerable, a respected monument like the facade of Sproul Hall.

The current edition, the fifth ever issued, creaks and totters like an alumnus of '08. It is conscientious, forthright and full OF THE SAME TRIED-BUT-TRUE CLICHES WHICH EVERY STUDENT should know but most apparently don't.

The supplement is sadly Jacking, but at least it fills a vacuum. All universities need a guide to teachers and courses.

At Harvard, for example, the "Conf-Guide" is published by the student newspaper, thus bypassing a few of the inevitable prejudices which are bound to pop up when a special interest group evaluates the university.

The idea of a political party like Slate providing the only establish-

Slate providing the only established guide is absurd. This is probably what the University deserves, though.

The supplement's method of evaluating courses was to distribute detailed questionnaires and summarize the consensus opinion.

But in many cases, it is obvious that few questionnaires were received. When the supplement first came out, it was severely attacked for criticizing courses on the basis of as few as three questionnaires, so perhaps this explains why no statistical summaries were supplied in this issue.

In many departments where 20 or more upper division courses are offered, less than five are listed in the supplement.

However, most of the course and teacher evaluations do appear to be reasonably accurate. There has to be someone to deflate the faculty windbags who think that they are God's gift to scholarship.

A Viable Voice

To the Icebox:

A group of my colleagues has suddenly seen fit to announce that they are opposed to the war in Vietnam, sort of, but that they are even more opposed to the methods and manners of the Vietnam Day Committee (VDC) on the Berkeley campus. Accordingly, they have composed a public letter seeking my signature if I "can agree with the general tenor... or accept most of its basic positions." At the same time, the letter seems to be directed partly to me since I am a faculty participant in the VDC to the extent of financial contribution. I have refrained from signing the letter not only because I am unaccustomed to writing letters to myself, but also because I am unimpressed with the hand-wringing, tea-cup liberalism which it represents despite the distinguished names to be found among its signatories.

Actually, I find myself in agreement with some of the major points in that letter, and I find myself unable to agree with every action and slogan of the VDC. But with the fundamental implications of the letter I disagree profoundly, and with the basic premises of the VDC I agree wholly. The letter implies that refuge in an ivory tower is the only right and seemly way for academics to respond to the complex problem of U.S. involvement in Vietnam. Such refuge is to be mitigated only by sending "letters to the President, to our congressmen, and to the public." The basic premise of the VDC seems to be that the United States is involved in a totally immoral military adventure, opposition to which must be expressed as urgently and effectively as possible in the hope that the killing will stop. Letters have proved ineffective over the months and years, so the VDC is trying more direct and dramatic means. I cannot believe that their means are absolutely ineffective nor, most especially, that they are relatively less effective than those of the signatories of the letter opposing them.

In the covering letter seeking my signature, I was told that "in a calmer and slower-moving situation, it would be appropriate for each one of us" (to express our reservations regarding the VDC precisely and, presumably, separately). "With the beginning of

the semester, however, we find ourselves in a situation where large numbers of idealistic and inexperienced students might be tempted to follow the melodramatic activism of the VDC—to their own detriment and to that of the University—and it is important that the faculty speak up" (by signing the letter).

Concern for the intellectual and behavioral welfare of our students is appropriate and in this instance it is well nigh touching, but I have more faith in the judgment of students than to think that they need preaching on how to be discreetly moral. Did my colleagues concerned for the welfare of the University learn nothing from last year's experience? Do they think the students learned nothing? Activism, melodramatic or otherwise, is something about which students know a good deal these days and it is rather poignant to think that my colleagues wish to protect them from it.

In a calmer and slow-moving situation" (to borrow a phrase) than that represented by U.S. involvement in Vietnam, I would perhaps find it appropriate to remain aloof; to examine each facet of that involvement with dispassionate and loving rationality, to savor fully the implications of every possible alternative, and to convey my conclusions (as I often have) in closely reasoned letters to the decision-makers. "With the beginning of the semester, however, we find ourselves in a situation where large numbers of idealistic and inexperienced" (Borrowing, again) young Americans

have been killed and will be killed in a war I consider to be utterly immoral and indefensible. In these circumstances, I think it important that those willing to act with the courage of their convictions be encouraged to do so. Those of us who prefer to wring our hands, to bemoan the actions of our government ex post facto, or to submit closely reasoned analyses to our president, should be free to do so (and to ponder the evident impact of our communiques along with the content of the replies we get from harried State Department PR men).

The supporters of the letter to which I am responding regret the activist means of the VDC while applauding its ends. I shall await eagerly evidence that they have undertaken—or even suggested—a more effective course of action. Until then, I will support the VDC even though I think it is at times unseemly, at times over-enthusiastic and even rash, at times embarrassingly frank, at times melodramatic, at times naive, and perhaps always quite unacademic in its approach. Maybe opponents of public immorality need to be these ways. If I see fit, I may work from within to achieve greater rationality in their proceedings, but I shall not attempt to destroy the one viable voice in this area crying out against the immorality of our war in Vietnam.

Sincerely,
 Gerald D. Berreman,
 Associate Professor,
 Dept. of Anthropology

D.C. Needs Columnists, Reviewers, Cartoonists

The Daily Californian is seeking qualified columnists, reviewers and cartoonists.

COLUMNISTS

Any persons wishing to write a column on a subject of general interest—including politics, cultural topics, education, humor, or social observation—may submit an example column along with a list of ideas for future columns to the editor. Columns generally run two pages, double spaced typewritten. Columnists will be chosen within the next week so applicants should submit examples as soon as possible.

CARTOONISTS

Both cartoonists to work independently and cartoonists to help illustrate editorials are needed. Interested persons should submit three samples (either single box cartoons or strips) drawn in black ink on heavy white paper.

Persons interested in writing columns and reviews, and drawing cartoons should submit their samples to the editor in 618 Eshleman Hall any time during the day.

Non-Discrimination Policy

(Editor's note—The Daily Californian has been asked to print the following University and ASUC policies on nondiscrimination.)

The following is a summation of University policies on non-discrimination. The full text of these policies can be found in *University of California Policies Relating to Students and Student Organization*.

The University of California has always had a policy in the administration of its affairs against discrimination based on race, religion or national origin. This policy has been followed strictly in the admission of students to the University and in the utilization of all University facilities. All groups operating under the administrative control of the Regents, including administration, faculty, student governments, and University-owned residence halls, are governed by this policy of nondiscrimination.

Discrimination based on race, religion or national origin is specifically forbidden in the administration of the affairs of student governments and their subsidiary agencies, all other student organizations which have a special relationship to the University or to student governments, and in privately-owned housing facilities which are inspected and approved by the University for student housing.

The University will not schedule the regular season athletic events in connection with which the participation, housing or other treatment of a University athlete, the selection of opposing team members, or the admission or seating of the audience, is regulated on the basis of race, religion or national origin.

The Associated Students of the University of California are in full accord with the University's policy prohibiting discrimination against any individual or group on the basis of race, religion, or national origin.

THE DAILY CALIFORNIAN

Peggy Krause, editor; Jim Branson, managing editor; Peter Benjaminson, city editor; John Oppedahl, assistant managing editor; Barry Bishin, assistant city editor; Konstantin Berlandt, feature editor; John Rodgers, sports editor; Chris Shores, business manager; Ken Luk, advertising manager; Tomas Zierer, production manager; Tim Hedermark, promotions manager.

NIGHT EDITOR
 ANDY MCGALL

NIGHT MANAGER

Editorials represent the opinions of the Daily Californian, not necessarily those of the University or student body.

Two Students Die in Tent

BRIDGEPORT (AP) Bodies of two University students who suffocated in a makeshift tent in Inyo National Forest were brought out by pack mule Tuesday night, the Mono County sheriff's department said today.

They were identified by personal papers as James Bruce Moorehead Jr., 21, of San Carlos, and Randal Gee, 22, of Santa Rosa. Both were seniors.

They went on a camping trip in the Thousand Island Lake region Aug. 28 and suffocated about a

week ago, Deputy Earl Crawford said. Their tent was fashioned out of a heavy plastic sheet and they burned charcoal briquets inside for heat in 30-degree temperature, he said.

The bodies were discovered Monday, five days after death Crawford said. High winds kept a helicopter from reaching the area and a ground party went in Tuesday.

Moorehead, a chemistry major, lived at 1161 Elm St., San Carlos. Gee, an engineering major, lived at 2747 Mohawk Dr., Santa-Rosa.

Memo


AWS: 3-5 p.m., Stephens Room, Student Union, Out-of-State Women's Tea.

Book Exchange: 10 a.m. to 4

p.m., Basement Eshleman Hall. Hillel Student Council Meeting, 7-10 p.m., Hillel Foundation, 2736 Bancroft. "Meet the Rabbi," 4 p.m.; "Happy Hours," 7-10 p.m. Phi Chi Theta: noon, 185 Barrows Hall. Ex. Com. Student Orientation Service: 9

to 4:30 p.m., 406 Student Union. Questions answered. Young People's Socialist League: 8 p.m., 2431 Dwight Way. Panel: "Pacifism and Anti-Pacifism" with Robert Catlett and John Maxwell. 6:30 p.m. Business meeting.

andré godet



RUFFLES & POLKA DOTS?

Jonathan Logan combines them in this wool dress reflecting the London influence.

\$25.00

Free Parking
Hours: 6-6, Thurs. 6-9
Durant and Telegraph
BERKELEY

andré godet



BLAZER

The traditional flannel blazer is the ideal all-purpose sport jacket. Tailored with natural shoulder detailing of course, welted edges, patch pockets, center vent and brass buttons. Available in navy, black, camel and bottle green. 42.50

Less 35% discount

27.87

BankAmericard welcomed here.

It's VAUGHN'S policy to give a reduction of 35% IN ALL DEPARTMENTS

Thurs. Evenings 'til 9:00

"Established 1927"

VAUGHN

at Sather Gate
2333 Telegraph, Berkeley
848-1906

VAN... the typewriter man...

MODEL TYPEWRITER CO.

CUSTOMER PARKING
DRIVE UP RAMP
PARK AT OUR DOOR
SALES-RENTALS-SERVICE

ENTRANCE → CUSTOMER PARKING

YOU NEED A CAL-GUIDE
to be Eligible
for a **FREE TRIP to HAWAII**
(students only)
Pickup a **CAL-GUIDE**
FREE
from

VAN the typewriterman

**WE SELL THE BEST
WE FIX THE REST**

WE REPAIR and SELL ALL MAKES
Portable and Electric

HERMES
OLYMPIA

ROYAL
SMITH

OLIVETTI
TORPEDO

"Rent to Own Program"

TYPEWRITER RENTALS - 3 Months for \$15.00

Phone
843-4686

CHAN-TEL PATIO
2510 Channing Way
Berkeley

Who has

Used Textbooks

For Women

CAMPUS PACS

For Men

New Textbooks

Art, Engineering, Stationary Supplies

california book co., ltd.
telegraph at bancroft

*Open evenings till 9:00 p.m., Sept. 13-17, 20-23

CO-OP IS NON-PROFIT

WE PLANNED IT THAT WAY

THAT'S WHY IT'S SO CHEAP

**UNIVERSITY STUDENTS
CO-OPERATIVE ASSOCIATION**

2175 Allston Way

TH 8-1936

Library Excursions

Thirty minute tours of the Main Library will be given today for interested new students.

The tours will leave at intervals between 9 a.m. and 11 a.m., and resume at 1:30 p.m.

Peacecorpsman Raps Corps

BURLINGAME (AP)—The U.S. taxpayers aren't getting their money's worth from the Peace Corps and it "is clearly not a workable method" to stop Com-

munism, a young Burlingame Peace Corpsman said today.

Gregory W. Stikes, 25, former high school athlete just back from Peace Corps duty in Indonesia and Thailand, said:

"I've talked to corpsmen stationed from Afghanistan to Thailand, and the general opinion is the same—we're not doing enough to warrant our being there. It's the same story of frustration everywhere. The corpsmen have had to lower their goals, and after they've gone their work is soon forgotten.

"I feel very strongly about stopping the advance of Communism. But, certainly in Indonesia and most of the rest of the Far East, the Peace Corps doesn't seem to be the answer."

The \$800 million spent in Indonesia made little difference, Stikes said. "The corps was kicked out by President Sukarno. And Indonesia is going Communist. The obvious conclusion is that the taxpayers didn't get their money's worth and that the Peace Corps is clearly not a workable method there to stop Communism."

Stikes joined the Peace Corps in October, 1964, after graduation from the University of the Pacific. He trained in Hawaii and was sent to Djakarta and then to the island of Ambodia in Indonesia.

He said Sukarno asked corpsmen to help Indonesia to build better athletes.

"Specifically, I was asked to develop a basketball team that could beat a Chinese team. At least, the Corps succeeded there. We did build a basketball team that beat the Chinese."

"Otherwise," Stikes said, "the athletic program was pretty much a failure."

Open Daily 9-5:30
Saturdays 9-4:00

Est. 45 years

GETTING ENGAGED?

• Full Discounts to Students
on all Fine Jewelry by a Major

WHOLESALE JEWELER

Zwillinger & Co.
760 Market St.

Suite 800

EX 2-4088
San Francisco

Try Our New
SNAP COURSE
In Shopping!

We feature all of the following to make your book buying easier and cheaper than ever—

1. **USED BOOKS**—for hundreds of courses from Ag. Econ. to Zoology—all clearly marked with our bright new blue and gold used stickers. More used books than ever before. Thousands of used paperbacks all set out for courses.
2. **EASE IN FINDING BOOKS**—We are the only bookstore to set up the courses in *alphabetical order* instead of scattered around at random. Finding your department is as easy as A, B, C. A cross reference system helps you locate other courses where you can find a particular book.
3. **RED STAR CASH REGISTER TAPE**—A red star on your cash register receipt is worth cash to you.
4. **TOP PRICES PAID FOR YOUR USED BOOKS**—whether used here or not.
5. **A COMPLETE ENGINEERING COUNTER, ART DEPARTMENT and SUPPLY DEPARTMENT** to fill your non-textbook needs.

You'll Get an A in Shopping at

**Campus
Textbook Exchange**

BANKAMERICARD HONORED HERE

2470 Bancroft Way

Across from the Bear's Lair

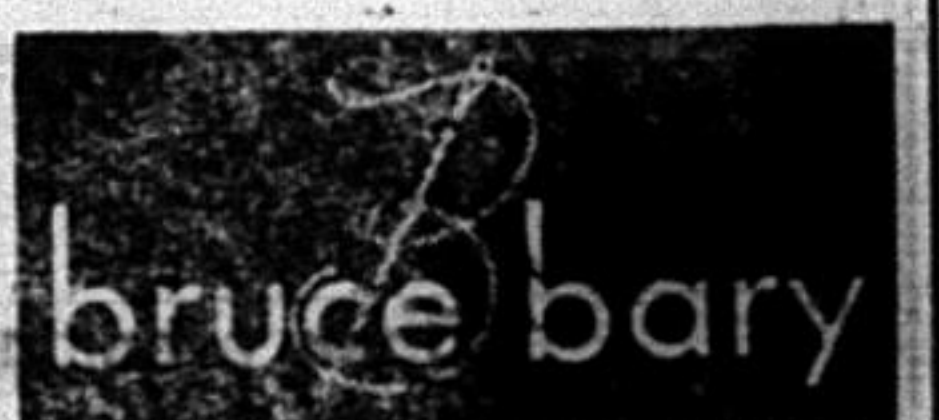
**JOIN
THE
DAILY
CAL**



**CHECK THE
ACTION**

In Our Budget Shop

Nylon Jackets
Fleece lined
navy blue
\$9.99



2576 Bancroft Way

Directly Across from the Campus

Daily Cal Want Ads

READ AND USE THE WANT ADS

This newspaper fully supports University policy on housing. Therefore, classified advertising relating to housing is only available to those who do not discriminate on the basis of race, color, religion, national origin or ancestry. Individuals with a valid complaint concerning housing discrimination are asked to report the matter to 204 Eshleman Hall.

The Daily Californian screens all classified ads. However, neither the newspaper nor the ASUC can be held responsible for misleading ads inserted. If there are any legitimate complaints regarding ads, these will be withdrawn without further notice.

Apartments

Designed for 2, 3, or 4. VERY LARGE, NEW, FURNISHED 2 BEDRM. Desks, bookshelves, W/W carpets, electric kitchen, large divided bedrooms, large closets, balconies, sun decks, heated pool, storage lockers. Soundproofed. Reasonably priced. Reservations for Fall or Spring. 1927 Dwight Way. TH 3-8144. R-9-17-D

AVAILABLE SECOND SESSION, 3 blocks U.C., huge 5 & 6 room flats. Absolutely soundproof (no neighbors). Fireplace, yard, dishwasher, huge refrigerator, freezer. Fabulous furnishings, plush carpets. Double bathroom. Suitable 4-6 girls. \$30-\$35 each. Inquire 2115 Haste Street TH 1-6240. 10-11-S

9-BLOCKS CAMPUS, 2115 Haste Street, Fall term \$120 up. Attractive, new, soundproof one bedroom apartments. Swedish modern furnishings, individual study desks (7 Ft. Long), sealy beds (twin or double), tropical patio, parking. Choice location. TH 1-6240. R-10-11-S

ALMOST ON CAMPUS (across street). 2523 Ridge Road. 4 Room furnished apartments. Available August \$110., September \$150., up. Artistically beamed ceiling, natural wood paneling, separate kitchen, utilities included. Also 5-6 room flats, August-September. TH 1-9010. R-10-11-S

Bishop Parker Apartments

2124 PARKER STREET (between Fulton & Shattuck)

STILL the only development offering the "package" of all these features:

- FURNISHED two bedrooms only (the owner is in the furniture business, and will occasionally provide extra case goods, just for the asking.)
- TWO FULL BATHS in ALL of our two bedroom units.
- Elevator, laundry room, free storage and parking.
- Large open spaces and landscaped patios.
- LARGEST apartment house SWIMMING POOL in the area.
- All-electric kitchens, including DISH-WASHERS in all units.
- Quality carpeting (Du Pont #501) and draperies throughout.
- An "East of Shattuck" location, within easy walking distance from Campus.
- Nine month leases for the academic year (Sept. 10-June 10) provided on request.
- RENTS YOU CAN AFFORD (check somebody else's first, and then come see us.)

See manager on premises or call 526-3998; 848-0585. 10-6-D

THE AMBASSADOR

"CONTEMPORARY ELEGANCE"

2211 Carleton Southside

All Electric Kitchens
W/W Carpeting and Drapes
Heat and Sound Insulation
Electric Heat
Central Hot Water
Automatic Elevator
Sundeck-Roof View
Private Decks and Balconies
Individual Lockers
Washer and Dryers—coin
Locked Building—Intercom

One and Two Bedrooms Furnished or Unfurnished
See for yourself or call 843-6398 9-17-A

HELENA MANOR

2114 Parker 843-4491

LARGE 1 AND 2 BEDROOM APTS.
PRIVATE BALCONY TOP FLOOR
DANISH MODERN FURNITURE
PARKING, LAUNDRY, SPACIOUS CLOSETS 9-28-H

UNIQUE FURNISHED PENTHOUSE. Three bedrooms, sunperch. Also garden Studio. Men. Reasonable. 3006 Claremont. 849-0880. 9-22-C

AN UNUSUAL MAN'S apartment for four, 6 rooms, fireplace, wonderful kitchen, enclosed garden, car-port. Above College-Ashby, 2729 Elmwood Ave. 9-23-M

FIVE BEDROOM APARTMENT anyone? Most spacious, sleeps 10. Three baths, tastefully decorated. TH 5-9603. 9-21-M

TWO MALE SOPHS need two roommates. Modern apartment 15 min. Student Union. \$50/month. 1927 Dwight, #303 elevator. Pool, carpeted. Near everything, 10-mo. lease. Try 841-4953 or come. Prefer studios type. 9-17-S

CLASSIFIED ADVERTISING

8-12 noon 1-5 p.m.

209 Eshleman Hall
TH 8-4800, ext. 3941
No ads taken over phone.
Come in or mail ad with check
Deadline 3:00 p.m.
2 days in advance

House For Rent

FIVE PLUS BEDROOM, contemporary, view, furnished. Much parking. Faculty/group. 350. 803 Craft. 849-1580-549-1551. 9-21-U

House to Share

5TH GIRL WANTED to share large house in Kensington with graduate students. Fireplace, yard, view, transportation available. \$50. 524-8876, 845-3454. 9-21-C

Rooms

ATTRACTIVE ROOM NEAR U.C. for male teacher or graduate student, non-smoker. Inquire Euclid Book Store, 1879 Euclid, 848-7952; Residence 848-0573. Also a room exchanged for work. 9-24-Mc

ROOMS FOR GIRLS, 4 blocks U.C., 2506 College. Kitchen privileges, laundry facilities. 845-9591, 531-9240. 9-27-L

VISITING PROFESSOR, GRADUATE student, private room, separate study, quiet neighborhood, kitchen privileges, 1130 Collins. LA 6-4052. 9-17-G

DURANT PLACE, 2605 Durant Ave., room & board for men. Fall-Spring. 1/2 block from ASUC. Two meals daily, five days/week. Reasonable price. 849-1169. 9-16-24-D

INTERFAITH CO-ED RESIDENCE fellowship. 3 blocks south of U.C. Young men and women. Ideal for students and employed. Room and all meals. \$440 a semester. Excellent food. 843-2461, 845-8329. 9-30-L

LOOKING FOR A ROOM? Try the C-1 roommate file. Third floor Eshleman: commuter independent office. 9-20-T

ATTRACTIVE ROOM PRIVATE bath, garage and board free for oriental student in return for 15 hours work. 653-7924. 9-16-R

STUDIO AND ROOM AAA location. Kitchen, living, dining room. Maid, laundry, \$35 up. 2434 Piedmont Avenue. Piedmont Lodge for women. 9-21-S

EXCELLENT BOARD WOMEN students \$225 semester rate, 2430 Piedmont Ave. Corner Haste phone 845-5765. 9-22-B

ROOM IN EXCEPTIONAL home with unexcelled view. Exchanged for six hours work per week. Near transportation. Oakland, Montclair area. Male student preferred. Telephone 339-9107. 9-17-R

OLD WORLD CHARM, contemporary convenience, above College-Ashby, spacious, colorful, comfortable, singles. Doubles. Kitchen, Lounge, 2729 Elmwood Ave. \$40 up. 9-21-M

WOMEN'S ROOM, BOARD, Alpha Delta Chi, 2726 Channing Way, Berkeley, TH 5-9140. \$395 semester. 9-23-H

Apartment to Share

QUIET GIRL OVER 22 wanted—share large house /2 others. Own bedroom. \$40. Near Shattuck, Vine, S.F. bus. 527-1243 6-9 p.m. 9-17-D

FEMALE STUDENT WANTED to share large attractive flat with three others, 2127 Haste, 841-6836. 9-17-K

ROOMMATE WANTED—MALE block from campus. \$60 furnished, electric kitchen. 1700 Spruce #1 UN 7-3374 collect Terry. 9-17-M

2 MORE MALES needed, 2 bedrooms, 2 baths, pool, kitchen, furnished 848-3065, 2437 Piedmont #106. 9-22-G

TWO FRENCH GRADS want two American grads—two bedrooms—\$45/each, quiet. 1534 Arch, 841-9918. 9-17-B

3 GIRLS WANT fourth. Spacious 2 bedroom. View. 2201 Channing Way, #3. Call Jean Abkin 843-6789. 9-17-A

FEMALE STUDENT to share 2-bedroom, furnished apartment. 3 blocks from campus. \$65. 549-1561 evenings, 376-4242. 9-21-W

FOURTH MALE ROOMMATE wanted—modern apt. \$50 mo, 2529 Benvenue #104, 843-4054. 9-28-W

CHANNING: TWO MEN need two upper division share modern two bedrooms apt. Pool, two baths, 5 min. campus. \$62.50 each. 848-5947. 9-16-F

Board

MEALS ONLY.

HASTE HOUSE

Known for its sumptuous food, elegant furnishings and strategic location, has a few Day Boarder openings for the Fall. Rates are \$80.00 per month. Interested men and women should contact the manager at 2717 Haste Street, Berkeley, in person, or phone 849-2383 or 254-5584. 9-24-N

INEXPENSIVE BOARD AVAILABLE

COED DINING

Three meals daily seven days a week at eight convenient campus locations.

For Particulars apply:
UNIVERSITY STUDENTS' CO-OPERATIVE ASSOCIATION
2175 Allston Way 848-1936

Be sure to ask about our special two week introductory offer. 9-28-U

Announcements

NEW DEADLINE FOR CLASSIFIED ADVERTISING

Starting Sept. 15 the deadline for classified ads will be 3 p.m. 2 days preceding publication. 9-17-C

Miscellaneous Services

AUTO DRIVING INSTRUCTION. Private lessons. Patient, professional instructors. Dual controls. Daytime, evenings, Saturday. Commuting pickup service. Berkeley Driving School, LA 4-8321. R-9-17-D

ALTERATIONS BY EXPERIENCED dressmaker. Ladies' apparel. Convenient North campus location. Reasonable rates. Phone 849-0371. R-9-20-S

FASTIDIOUS WOMEN, HAVE unwanted hair removed. Jeanne McGettich, R. E. Room 302, 2140 Shattuck Ave., Phone 849-2672. R-9-27-Mc

CONTACT LENSES EXPERTLY fitted to all ages. Clinic fees. Dr. Ralf W. Lorenz, Ophthalmologist. 2132 Center Street Berkeley, 843-9068. R-10-12-L

BUDGET MOVING; Any time; small jobs preferred: Call 647-7590. 9-17-B

edit

Prepares manuscripts of any size, on any subject for final typist or printer; integrates figures, tables, footnotes; indexes; proofreads M.A. English. 7 years general book and technical editing experience.

Phone 841-8837 most days, any evening. Box 801, Berkeley. R-9-29-S

ALL-ROUND PHOTOGRAPHY to fit academic and artistic publishing needs. PHOTON GRAPHICS, 1652 Shattuck, TH 3-3900. 10-11-H

Student, Prices

XEROX COPIES

8 1/2 x 11" 10 cents
8 1/2 x 14" 12 1/2 cents

Green Light Copy Service

2634 Ashby Ave.
(near College Ave.)

Open 9 to 6 Monday thru Saturday TH 8-1715

T.V. RENTALS \$10.00 a month. Free delivery. Otis TV—848-5593. 10-12-0

ALTERATIONS ON CLOTHING and custom shirt making. Fast dependable service. 843-7400. R-10-12-M

DRUMMER WITH YEARS experience wishes to join or form working combo. Bob Benson 845-9268. 9-16-B

ALL SURPLUS DESKS \$19.95. Files, Kardex, Duplicators, Projectors, etc. Kantor & Sons, 5847 San Pablo, 653-1254. R-9-22-K

Miscellaneous For Sale

IMPORTED INDIA coarse cotton, 36" natural for drapes etc. 39c yd., Burlap, natural 40c, colors 59c. Canvas for art painting 48" 60" 72" wide also silks, woolsens, synthetics. Freefields Fabrics, 2042 University, next to U.C. Theatre. R-9-21-F

NEW BABY CRIBS \$16.95; portable cribs \$10.95; high chairs \$8.49; bassinets; strollers; carriages; new, used. 2444 Grove, Oakland, HI 4-5170. 9-22-J

ATTIC-TREASURES AND old-fashioned furniture at prices grandma paid. Additional price reduction if you buy several items. Cottage Victorian Shop, 6607 Telegraph—3 blocks past Ashby. 10-12-C

HIFI SET: TWO heath 14w amps, health changer, working order, dirt cheap. \$25 total. 845-0930. 9-21-C

MUST SELL APARTMENT FURNITURE. Mahogany dining set, medium size seats six. \$35. Lamps, desks, bookcases, tables, couch and armchair. DL 8-9642. 9-22-W

LADIES SKI SWEATERS. Handknit from Denmark \$20.00—841-3006. 9-22-S

Personals

LOST PASSPORT: #11756. Please send it to Iranian Consulate General, 3400 Washington Street, S. F. immediately. Mohi Emami, 2230 Durant #204. 9-16-E

Lost and Found

LOST AND FOUND is located in Room 2, Sprout Hall. Hours: 12 noon at 4 p.m., Mon. through Friday.

Typing

THIS NEWSPAPER REQUIRES ALL PERSONS LOCATED IN BERKELEY TO SHOW PROOF OF BUSINESS LICENSE BEFORE PLACING TYPING ADS.

TYPING, TERM PAPERS, Call 845-8152 between 9 a.m. and 8 p.m. R-9-16-S

EXPERIENCED TYPIST: Theses, dissertations, manuscripts. IBM Electric. Fast, efficient service. Call LA 4-6673. R-10-7-S

FYBATE PRINTING SERVICE

2440 Bancroft — TH 3-8080

Typing — Mimeographing — Printing
Photocopying — Editing — Binding

SOCIAL ANNOUNCEMENTS AND CARDS R-10-4-F

EXPERT TYPING. All types. Convenient Berkeley location. Reasonable rates. Call before 8:30 p.m. 843-5278. R-9-16-P

THESES—DISSERTATIONS RESUMES—MANUSCRIPTS

Why settle for ordinary typed copy on your papers when you can have them PRINTED AT COMPARABLE PRICES? Greek letters and special symbols for math and engineering. Charts, drawings, tables — A COMPLETE SERVICE. IBM Executive typewriters—skilled typists.

TYPE-INK, 2285 Fulton
Weekdays 8:30-5 849-1625
R-9-27-T

EXPERT TYPING, IBM Electric. Prompt service. Reasonable rates. Call LA 4-2348. R-9-28-B

EXPERT TYPING, PAPERS, theses, dissertations. Reasonable rates. Grace O'Connell, 771 Pomona Ave., El Cerrito. R-9-27-0

SCHEDULE YOUR THESIS-dissertation work now with Type-Ink 2265 Fulton Street, avoid disappointment during rush, 8:30 to 5 weekdays 849-1625. R-9-29-T

TYPING (ELECTRIC), PROMPT service. Theses, term papers, manuscripts. Mrs. Corso, LA 6-0339. R-9-17-C

HAVE EXPERIENCE, NEW Electric Pica will type theses, briefs, etc. Accurate, reasonable. LA 5-5331. Mrs. Breazeale. R-9-21-B

FOR ACCURATE TYPING on Electric Pica: Term papers, theses, manuscripts. Call Mrs. McCroskey, LA 6-6159. R-9-24-Mc

TYPING, TERM PAPERS, THESES, dissertations. Experienced. Near campus. Willow Taylor, 849-1508. R-9-23-T

EXPERIENCED ON IBM executive. Technical typing, manuscripts, Rush Jobs. Multilithing. Shazam Typing Service. 848-9047. 9-17-F

Apparel

Nice Used Clothing for Entire Family. Especially Students

"We buy and sell." Bathing suits for the family, 50c to \$1.98. Capris, shorts, blouses, 25c to 78c. Men's slacks \$1.98 to \$2.98. Shirts 25c to 98c. Shirts like new \$1.98. Children's clothing.

GARMENT EXCHANGE
11732 San Pablo Ave., El Cerrito—BE 4-0341
R-9-24-G

Excellent Resale Clothing

Men, Women, Children

All Merchandise Cleaned and Pressed. Skirts \$.98-1.98; Sweaters \$.78-2.98; Blouses \$.35-.98; Men's Sport Coats \$1.98-3.98; Slacks \$1.98-2.98; Shirts \$.50-.98.

THE TURN-ABOUT SHOP, 567 San Pablo Ave., Albany across from the Albany Bowl. 524-8865—Open Tues-Sat. 10-6, Fri til 9pm R-10-6-T

Tutoring

FRENCH/ITALIAN. Courses, MA & PhD exams, travel; pronunciation, grammar, vocabulary; reading, conversation, exercises. Phone 841-2506. Arden Schaeffer, 3024 #5 Deakin. R-10-5-S

FRENCH, ITALIAN, GERMAN, SPANISH coaching experienced tutor. Course exams. M.A., Ph.D. 3 minutes Duwelle. TH 3-5158. R-9-29-S

TUTORING FOR MEN in any lower division mathematics or physics. Esten Buck (MA '30), 2422 Channing Way, Apt. 9, TH B, 3346, 7 to 7:30 p.m. Rates reasonable. R-9-27-B

Child Care

CHILD CARE, DIAPERS and bottles. Pre-school child. 654-5310. 9-20-D

CHILD CARE IN my home. Diapers & Bottles. Pre-school child. 654-5310. 9-20-D

Autos For Sale

SAVE ON 1965 Barracuda, Gold with black interior, 6,000 miles. Perfect condition. 524-7197. 9-21-C

FRANK HENRY, THE small car buyer, is now at 2817 Shattuck TH 5-1515 / LA 6-9257. 9-21-H

1955 RAMBLER STATION wagon. Running condition. Heater. Good tires. \$100. LA 6-1213. 9-21-G

1957 CHEVROLET HARDTOP, 210, Radio-heater, Good motor. \$950 or offer. Phone 655-4461 after 6. 9-21-C

V. W. BUS. STANDARD '61. With soul. \$800. LA 4-3999. 9-21-P

1964 KARMANN GHIA conv. white extras \$1995. Tel. 841-9625 or leave message at 841-6313 Rm. 2411. 9-21-G

FORD CONVERTIBLE 1958. Sleek, good top, good tires, \$250/offer. 849-2494 evenings. U.C. x 2020 days. 9-21-R

REBUILT 1964 FORD. All new: motor, auto-transmission, brakes, tires. Radio, Heater, Hard-top. \$275—OL 8-9842. 9-22-W

1959 SUNBEAM CONVERTIBLE "Rapier." Excellent condition. New top. \$375.00. 841-3568. 9-22-P

1962 TR3B, R/H, Excellent condition, TR 4 engine, etc., new tires, \$1450. 843-9558. 9-29-0

1930 MODEL A, Rebuilt engine. New: paint, tires, brakes. \$495. TH 8-2425 eve. OL 8-0949. Dave Burg. 9-22-B

MGA ROADSTER 1958 Good mechanical and physical condition white 1600 series, wire wheels \$700. 600 Alvarado Road, Berk. 9-22-T

1956 OLDS SUPER 88 new battery. Muffler. \$295 or Best offer. Eve's 452-4614. 9-22-Y

1958 SIMCA, FINE running condition. Just \$250. Call after 5 p.m. 653-6329. 9-17-B

Motorcycles & Scooters

TRIUMPH 1964 BONNIVILLE 650cc. Brand new engine. Customized. Modified. All chrome. Spotless. \$1300/offer. Call 697-3982. 9-22-T

1964 HONDA 305 'Super Hawk,' new rack, low mileage, excellent condition. Best offer over \$500. 845-7191 between 6-8 p.m. 9-20-D

1962 HONDA 250cc. Excellent condition. Tuned. Clean. New tires. Must sell. \$325 or offer—848-0214. 9-17-B

YAMAHA 1964 125cc. 1100 miles. Auto-lube. Luggage rack. \$395. TH 5-1515 / LA 6-9257. 9-21-H

LAMBRETTA 1963 150cc excellent condition, accessories. \$150. 832-5075. 9-21-R

TRIUMPH 1961 500cc. Neat, reliable, excellent condition. Tachometer. New clutch, paint, battery. \$550. 261-0986 evenings. 9-21-L

Auto Insurance

ALL DRIVERS—LOWEST possible rates single/married. Ask for Peter Siewert. Days TE 4-7100. Evenings OL 5-0377. R-9-24-S

AUTO, FIRE, SCOOTER, MOTORCYCLE. All your insurance needs in one convenient stop. 1688 Shattuck. 841-2833. R-11-20-T

Instruction

SCHOOL OF CLASSICAL BALLET. Jan Carpenter, Director. Fall classes now forming for children and adults. Pre-ballet through advanced ballet training. Classes held at Williams College, Arlington Avenue, Berkeley. Information: 533-2341. 10-11-C

CLASSICAL GUITAR LESSONS

Emphasis on disciplined study for development of technique and correction of faults. Interpretation of music of all periods for guitar. Private lessons, or possibility of forming seminar groups.

JOSEPH BACON
GA 1-2870. R-10-13-B

Help Wanted

YOUNG WOMAN FOR baby sitting. 20 hours per week. LA 4-2683, Kensington. 9-3-G

MALE STUDENTS NEEDED FOR MENTAL HEALTH PROJECT

Students will be paired with troubled 5th and 6th grade boys to share activities of mutual interest. 6-9 hours a week, \$1.40 per hour. Training program. All majors, ages, races, etc., needed. Work starts first week of October. Apply now for the interpersonal Relations Project at Stiles Hall (2400 Bancroft) or at the Placement Center. 9-21-S

BABYSITTER FULL-TIME for four-year-old girl, your home. Call 849-4938 evenings. 9-22-B

HASHERS WANTED 6 days a week. Contact Andy 845-9220. 9-21-A

PART-TIME SECRETARIAL-general assistance by responsible woman for salary or studio apt. Box R 209 Eshleman Hall. 9-22-M

MALE STUDENTS WITH auto to deliver at night. Earn extra money plus hourly wages. Telephone 841-9340 after 10:30 a.m. 9-16-P

ATTENTION COLLEGE MAN—3 openings for part-time work. During school year. Call Mr. Reed. 655-5692. 9-28-R

Course Change

History 17A has been changed from Tuesday-Thursday at 2 p.m., 155 Dwinelle Hall, to Tuesday-Thursday at noon, Wheeler Auditorium. The exam group number is 19.

Daily Cal Staff Meet Today

The Daily Californian will hold its first staff meeting of the semester, 2 p.m. today in its offices on the sixth floor of Eshleman Hall.

Anyone interested in joining the paper should come to the meeting, which will include a critique of the paper's first two editions.

University Official Explains Out-of-State Tuition Fee

By BRUNO BRANDLI

"Increases in the out-of-state tuition fee are tied together with nothing other than the rising costs of education," an official of the University's Educational Relations Department said yesterday.

Casting aside suggestions the

fee hikes were discriminatory to out-of-staters, Assistant Director J. Price Gittinger added, "We never use fees as a method of controlling admission to the University."

Tuition fees have increased steadily in the last five years. Most recent was one approved by the Board of Regents for the academic year 1965-66, boosting the non-resident tuition fee from \$600 to \$800 a year.

According to the official University Bulletin, the Regents approved the change because of "expanding costs of education and the need for out-of-state students to bear a more equitable share of these costs."

"Equitable share" is based on a statistic for the amount California pays to educate a state resident at the University, explained Gittinger.

He did not know how much this figure was.

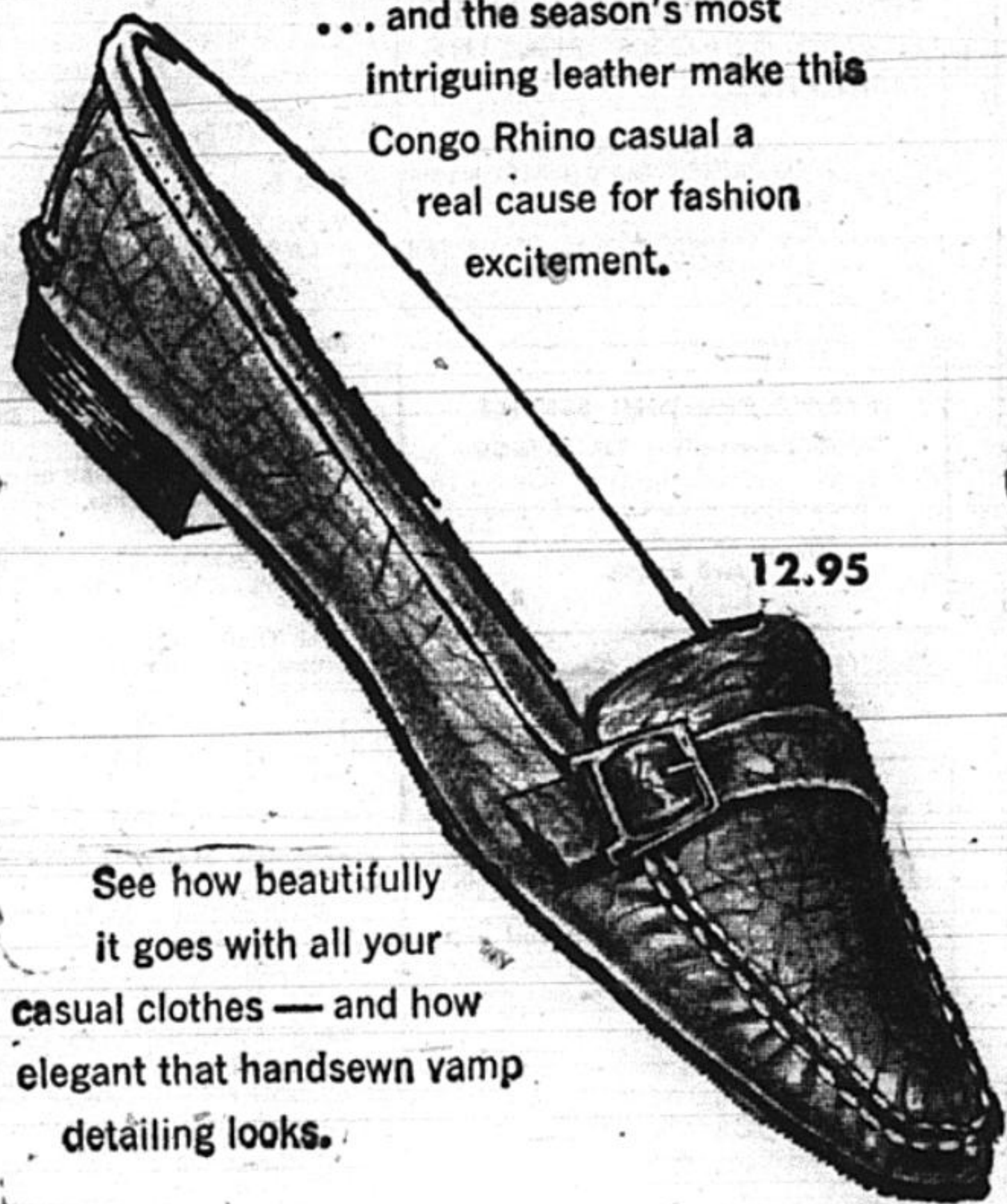
The non-resident tuition is comparable to similar fees at other major state universities including Colorado, Wisconsin, Michigan, Oregon and Minnesota.

State residents pay only the incidental fee; the actual cost of education is paid through taxes.

Join The Daily Californian

Prettiest shoe on the square

A squared-off toe...dashing buckle... and the season's most intriguing leather make this Congo Rhino casual a real cause for fashion excitement.



See how beautifully it goes with all your casual clothes — and how elegant that handsewn vamp detailing looks.

naturally

oldmaime trotters

Layton's

SHOES FOR WOMEN

TELEGRAPH AVENUE AT DURANT

ASK ME!

HOW MUCH YOU MAY SAVE ON YOUR CAR INSURANCE WITH STATE FARMS

SEE ME



Dave Schiller

1527 Shattuck

841-6171

Evenings 254-5072



Automobile Insurance Company Home Office: Bloomington, Illinois

Students & Faculty Members!

YOU MAY CHARGE \$100 WORTH OF THE FINEST CLOTHES ON CAMPUS

just show your reg. or faculty card

GRODINS

has the best credit deal for young guys anywhere!

BOOKS

USED and NEW for all courses

ED HUNOLT BERKELEY BOOK

2476 BANCROFT WAY



CHECK THE ACTION

In Our Budget Shop

Wash Pants \$2.69
3 pair for \$7.99

bruce bary

Clothier To Men & Young Men

2576 Bancroft Way

Directly Across from the Campus