

KAL Hopes Rise For FM License

Radio KAL, currently broadcasting only to University living groups and the campus, may become an FM station next year, according to KAL manager Bob Kennedy.

As such KAL would reach 90 per cent of the students and 95 per cent of the faculty.

Working through an advisory board to Chancellor Roger Heyns, KAL is now in the process of applying for the only ten watt FM license available in the Bay Area.

If the Federal Communications Commission awards the remaining frequency to someone else the student body would have to pay more than \$100,000 for a commercial frequency, provided one became available, he said.

Two months ago KAL's Radio Policy Board met to advise Chancellor Roger Heyns about the licensing proposal.

(Continued on page 6)

'Strings' on Budget - Convention Worried

By JOHN VANEK

The week-old Constitutional Convention got a \$120 budget recommendation yesterday from the Finance Committee.

But the strings attached to the money sounded like ASUC Senate control to some Convention members.

Fi-Com's recommendation has a rider that the Convention follow the ratification process outlined in Article XI of the present ASUC Constitution.

"It sounds like an attempt to establish Senatorial control over the Convention finances," said Charles Bordin, Slate chairman.

Article XI of the existing ASUC Constitution requires a two thirds affirmative vote by the members of the ASUC for the adoption of an amendment.

Bordin added "if the ASUC didn't plan to finance the Conven-

tion, why did it set us up in the first place."

The 60 Convention delegates, elected a month ago and scheduled to meet well into next semester, are to draft a new Constitution for student government.

Scope's Sharon Mock, one of the 11 non-Slate, non-Graduate Coordinating Committee delegates to the convention agreed with the existing ratification process but resented Fi-Com's attempt to allocate money with "strings attached."

She felt the creation of the Convention by the Senate implied the latter would pay for "book-work, communications and secretarial help."

Marston Schultz of Slate said the Senate voted down a proposal to impose article XI on the Convention.

In creating the Convention the Senate set up certain rules under which the Convention must operate.

These rules provide for the election of a chairman, adoption of meeting rules, and well publicized meetings open to the public.

Tom Brougham, a Slate delegate to the Convention, had asked Fi-Com for an allotment of \$300.

The money was to be used for "a ditto machine, two typewriters, paper and stationery supplies and wages for work study workers," Brougham said.

(Continued on page 16)

Powerful Mag - Biggest Ever

Today's Weekly Magazine—the biggest ever—tells how the University can save \$2 million a year on its electric power bill; reviews Mt. Everest, "The Last Analysis," and the quarter system; and contains Ann Whipple's tasteful holiday greetings. See pages 7 through 11.

Heyns Announces Rules Com Members

By CAROL LIEBMAN

The Administration and faculty members of the Campus Rules Committee were announced late yesterday by the Chancellor's Office.

The four faculty members are: Robert O'Neil, professor of law; Raymond Sontag, professor emeritus of history; Lloyd Ulman, professor of economics, and Reginald Zelnik, assistant professor of history.

(Heyns' statement is printed on page 13.)

The four were nominated by the Committee on Committees of the Academic Senate.

Vice Chancellor Earl Cheit will represent the administration.

Chancellor Roger Heyns, in a written statement, said the committee will meet shortly after Christmas vacation when he will "present to it a series of questions on which I shall seek its advice."

He also said "a study of student

conduct and activity rules is in the process at the Universitywide level as well."

The three undergrad and two grad members of the committee were elected a month ago in a campus election.

Graduate committee member Jamie Burton said he was not at all surprised with the appointees.

Dan Griset, an undergraduate committee representative, said "The faculty will provide good judgment and a stabilizing influence."

According to an authoritative source, the faculty representatives were balanced politically.

He said Zelnik is the most "liberal" of the group, Sontag the most "conservative," and O'Neil and Ulman are the "moderates."

Bettina Aptheker, an undergraduate committee member, and Burton were disturbed with the Chancellor's statement that the committee would only act as an advisory body to him.

Both said they ran on platforms that the committee's function was to rewrite all the rules.

But the function of the committee has been changed from writing the rules to advising on the present rules, they said.

Miss Aptheker said that the committee's function of advice on the already written rules rather than rewriting them is "non-sense."

Griset disagreed with Miss Aptheker and Burton.

"Our committee is by definition advisory," Griset said.

O'Neil said the Chancellor is in no way legally bound to follow the dictates of the committee.

"The committee can only be advisory," he said.

Both Heyns and Associate Professor John Searle, the Chancellor's Special Assistant for Student Organizations, have been attending a series of meetings with the Regents and the University President's Council of Chancellors to discuss possible changes in Universitywide policies, Heyns' statement said.

Searle said yesterday the student conduct rules fall within two categories: the Universitywide rules in the University Regents' Code, and rules made by individual campus rules committees.

These meetings will attempt to bring the Universitywide rules into closer conjunction with what the students rules committees advocate, Searle said.

Heyns' statement said copies of Universitywide policies had been distributed to delegates to the ASUC Constitutional Convention.

Also, he said, "Professor Searle will distribute late this week further information regarding legal and policy aspects of the Convention and the ASUC generally."

Searle said so long as the ASUC functions under the authority of the regents, it must abide by the Universitywide Rules.

Christmas Carols Highlight University Meeting Program

University students will join in singing Christmas carols in the annual University Meeting devoted to Christmas music at 2 p.m. today in Pauley Ballroom.

The program will feature music by the University Chamber Band, conducted by James Berdahl, and the Glee Club and Treble Clef, conducted by James Frankhauser.

All classes at that time are cancelled.

The traditional Christmas Message will be delivered by William Dennes, Mills Professor of Intellectual and Moral Philosophy and Civil Policy, Emeritus. Chancellor Roger Heyns will preside.

After the performance of J. S. Bach's "Von Himmel Hoch" by

the band, the choral groups will sing, "Hodie Christus Natus Est," by Monteverdi; "My Dancing Day," arranged by Shaw-Parker; "The Hunter," by Brahms; "O Magnum Mysterium," with two different musical settings by Gallus and Gabrieli; "There Is No Rose," by Britten; "The Sleigh," by Kountz; and "Magnificat," by C. P. E. Bach.

The audience will join the music organizations in "The First Noel," "Silent Night," and "Adeste Fideles." The band will play J. S. Bach's choral prelude, "Wachet Auf," and the program will conclude with the same composer's chorale, "Now Let Every Tongue Adore Thee," performed by the entire ensemble and audience.

Unattended Booths Raise Election Questions



BALLOT BOX BURGLARS . . . Two Daily Californian staff members stage a mock theft at an unattended polling place. The picture was taken at noon yesterday in front of the Student Union.

By DAVID NEWMAN

The threat of scandal hung over the first day of balloting in the ASUC elections with a report that one of the polling booths was left unmanned for some time yesterday morning.

The Student Union polling booth was unattended, with all the ballots and the ballot box out in the open, for approximately 20 minutes about noon.

Dave Engel, acting elections chairman, said he didn't know about the report of the length of time the booth was unattended, but said he had checked the booth at about 11:30 a.m. and was manning the booth himself starting shortly after noon.

Several possibilities were raised by the brief abandonment of the booth, including such things as stealing the completed ballots or replacing them with other ballots, and simply stuffing the ballot box.

While he didn't disallow the possibility of someone walking off with a ballot box or some other similarly nefarious act, Engel did say he had rather potent checks against ballot box stuffing.

He was understandably reticent about revealing exactly how the checks operated.

Engel said late yesterday he

had counted the ballots against the names on the sign-up sheets at the various polling places and found "only two missing."

Engel said there are normally two people at each polling booth, so that one person can take a short break if necessary.

But, he added, "So few people have signed up to man the polls that occasionally there is only one person at each booth."

Speaking somewhat more informally, Engel said that any election of this type depended to a large extent on the basic honesty of the students.

"Any one of the poll workers could stuff a ballot box if he really wanted to," he said.

He was somewhat chagrined at the low turnout of voters for the first day of balloting. Only about 1100 ballots were cast for the nine contested offices.

Balloting continues today for three rep-at-large seats, sorority representative, men's residence hall Rep, Commuter-Independent rep, men's co-op and small living group rep, head yell leader and associated women's student chairman.

Polling booths will be open today from 9 a.m. to 4:30 p.m. at several places on campus.

News from the Wire

Court Holds Ban

WASHINGTON—The Supreme Court refused yesterday to review a ban on the voluntary recital of nursery-type prayers by public school students.

Parents of 21 New York City school children had asked the court to rule the simple non-denominational and nonsectarian prayers constitutional under the 1st Amendment guarantee of freedom of religion.

They appealed to the court after the U.S. Circuit Court in New York reversed a lower federal judge and upheld the ban the school principal had put on the voluntary prayers.

The parents, members of five different faiths, argued that voluntary prayers are materially different from Bible reading programs and required recitation of official school prayers ruled unconstitutional by the Supreme

Court under the 1st Amendment prohibition against "establishment of religion."

The Supreme Court's refusal to act on the case was announced in a brief order that gave no reasons.

Himalayan Battle

NEW DELHI, India — Communist Chinese and Indian troops in the snowy Himalayan mountains have made contact three times in two days and engaged in one brief but heavy fight.

This was revealed in separate announcements made in New Delhi and Peking yesterday over increased activity along the border of northern India and Communist-controlled Tibet.

The Indian government said 250 to 300 Chinese troops intruded Sunday into Sikkim and clashed with an Indian patrol. Sikkim is a former British protectorate of 2,700 square miles that came under Indian Indian protection in 1950.

The Indian announcement said, "Sizable casualties were suffered by the Chinese. There were also casualties on our side."

Peking Blasted

MOSCOW — The Soviet Union, in its bluntest tirade against Communist China since Premier Niki-

ta S. Khrushchev's ouster 14 months ago, says Peking has sabotaged the "sacred cause" of communism in Vietnam.

The Soviet Communist party newspaper Pravda charged editorially Sunday that Mao Tze-tung's regime deliberately refused to take joint action with the Soviet Union and other Communist countries "against American aggression in Vietnam which is extending a direct threat to world peace."

Instead, Pravda charged, Peking's leaders are increasing activities to widen the breach between the Soviet Union and Red China.

Britain Likes Truce

LONDON — The British government came out yesterday in favor of U.S. acceptance of the yuletide truce proposed by the Communist Viet Cong in Vietnam.

George Thomson, minister of state for foreign affairs, told the House of Commons:

"It is a very short truce. We would hope that it could be extended sufficiently long to allow the possibility of real negotiations to take place."

Mrs. Joyce Butler asked if the U.S. government could be urged to accept the truce proposal and to extend it "into an armistice which would give the opportunity to have a saner policy adopted."

Thomas replied that the best way to end the Vietnam conflict was by negotiation.

Initial American response was to say that the best sort of Christmas gift would be a long truce that presented a chance for negotiations. Meanwhile it is being left to the discretion of local American commanders whether they would choose to observe or to ignore the ceasefire.

AFL-CIO to Fight

SAN FRANCISCO — America's to labor leaders pledged yesterday to fight for a stronger voice in Congress and state legislatures to wipe out discrimination in America and seek \$10 billion in federal funds to expand educational opportunities.

The 10th anniversary convention of the AFL-CIO also re-elected President George Meany with a standing ovation.

Delegates then went on to nominate eight slate candidates to replace older or inactive vice presidents on the federation's executive council.

Meany told delegates, "We have a great deal of work to do," particularly for "all the little people of America."

"They have no one else to represent them," Meany said.

Peace Corps Trainees Found

MANZANO, N.M.—Eight Peace Corps trainees were found yesterday near a ranch on the western side of the rugged Manzano Mountains in central New Mexico, and all were in good condition, the Forest Service said.

The four men and four women all in their 20s, left Thursday in a four-day, 30-mile training hike across the mountains but had failed to arrive at their destination Sunday.

About 60 persons and ground units, assisted by a helicopter, fought snow and cold yesterday in the search.

Spokesmen said all eight trainees were walking out of the mountains.

All were in their ninth week of training at the Peace Corps Center at the University of New Mexico in Albuquerque and are scheduled to serve in Chile.

A-1 STARTS THE ACTION WITH STYLE!

THE SLIM CONTINENTALS WITH SLEEK CONCOURSE STYLING



NO-IRON GUARANTEED NEVER NEEDS IRONING

A-1 Racers

A-1 SHARP men's stores that carry the LATEST or write A-1 Kotzin Co., 1300 Sunset St., Los Angeles, Calif. 90015

Choose from the Finest Stereo Component

McDANIEL'S
HI-FI

2984 College Ave
449-3272 • Berkeley

Featuring

SONY TAPI RECORDERS



Christmas cards
Gill books
Candies
Umbrellas
Brief cases
Souvenirs
Art supplies

FREE GIFT WRAP

SUNCO
student union plaza

7:45 am to 6:00 pm

Memorial Set for Rad Lab Physicist

A memorial service will be held in Berkeley today for Sulamith Goldhaber, a respected high energy physicist, who died last week in Madras, India.

The 42-year-old scientist and mother was on a world lecture tour with her husband, Gerson Goldhaber, when she died. Her husband is a professor of physics at the University and a co-leader of a research group at the Lawrence Radiation Laboratory. Her death was announced by the laboratory Sunday.

Funeral services were held Sunday in Tel-Aviv, Israel, where relatives of the couple live. The couple were accompanied on the tour by their son, Nathaniel, 17, a high school student.

Edwin McMillan, director of the radiation laboratory, said: "Mrs. Goldhaber was a fine person. In her scientific work, she had a flair for style and a clarity of understanding that aroused enthusiasm and brought inspiration to her colleagues. Her loss is more than personal: it is a loss to science."

Mrs. Goldhaber, a research physicist at the radiation lab, had collaborated closely as a member of research teams solving problems in high energy physics. She was experimenting with a new measu-

UC Scientist Dies in India



SULAMITH GOLDHABER

ing system to calibrate reactions in bubble chambers, detectors which take high-speed photo-

graphs of particle interactions.

She was on a Guggenheim fellowship to deliver a series of lectures at the Mathematical Science Institute in Madras. While preparing the lectures, she was stricken with a brain hemorrhage. Surgery revealed a brain tumor, the cause of her death Dec. 8.

The Goldhabers, who came to Berkeley in 1953, were among the early experimenters on the Bevatron. At that time, it was known as one of the world's largest atom smashers.

Their experimenting helped to establish the properties of the nuclear particles which are called K mesons and antiprotons.

Their work on reactions of the K-plus meson over a wide range of energies is considered a great contribution to particle physics.

She was born in Vienna, Austria. She received her master's degree in science from Hebrew University in Israel and her doctorate from the University of Wisconsin. She is survived by her widower and son, a brother, S. Low of Tel-Aviv, and a sister, Mrs. Lola Cappel of New York City.

—Compiled in part from AP

Faculty Referendum Rebuffs UCLA Football Stadium Plan

A proposal for a UCLA football stadium received a sharp setback yesterday when a faculty referendum expressed disapproval of the project by almost 2 to 1.

The results showed 522 against the stadium, and 274 in favor, a total of 796 votes out of 1314 faculty members.

The results of the referendum are technically still unofficial because they have not been received by the UCLA Academic Senate, which meets today.

A student referendum on the same issue was extended an extra day because of a foul-up in election procedures. The vote ends today.

The stadium is a pet project of UCLA Chancellor Franklin Murphy, who has argued that the stadium will provide a sense of identity for students on what is a predominantly commuter campus.

A student referendum held last semester rejected the stadium proposal by a 2 to 1 margin, but the results were considered inconclusive because only 20 per cent of the student body voted.

An anti-stadium petition run recently in the Daily Bruin, the UCLA campus newspaper, received 2660 signatures.

Murphy's original plan called for a \$6.5 million appropriation from student incidental fees.

However, he recently switched to an alternate plan which called for a \$2.9 million appropriation from student fees, with the remainder of the financing to come from other sources, primarily donations.

Student objection to the stadium has had two focal points. Many students consider the stadium unnecessary as it would be used only four times a year. UCLA currently plays its football games in the Los Angeles Memorial Coliseum, 15 miles from campus.

A second objection is aimed at Murphy's claim that the stadium will increase the "aura of community" at UCLA.

Some students have objected that this is an impossible thing to achieve at a campus with such a high percentage of commuter and independent students.

Viet Protestors Given 30 Days

SAN FRANCISCO (AP)—Jerry Rubin, a leader of the Vietnam Day Committee, and Steve Weissman, a leader of last year's Free Speech Movement, received 30-day jail sentences for trespassing and resisting arrest during Gen. Maxwell Taylor's recent visit here.

The arrests occurred at the Fairmont Hotel last August.

Henry Mitchell of Fresno and Barbara Gullahan of Berkeley were similarly sentenced by Municipal Court Judge Donald Constine yesterday.

Constine ordered the jail terms after turning down defense attorney Beverly Axelrod's plea for probation.

"This . . . is no ordinary case. No real purpose will be served now to lecture, preach or admonish."

Rubin, who protested that the group was being punished for "a political protest," was ordered immediately to jail.

The other three promised to report to authorities Saturday to begin serving their terms.

Appearing in court with Mitchell was his father, the Rev. Henry Mitchell of the Second Baptist Church in Fresno.

Campanile Steeplejack Climbs Sather Tower The Hard Way



—Daily Cal Photo by EVAN WILSON

CAMPANILE ADORNED . . . The rope you may have seen yesterday on the Campanile wasn't holding it up. Actually, it was being used by a steeplejack to make a routine check of the tower. He will examine every block of granite and marble for defects before he finishes.

Dzura Tabbed For '65 Santa

Hospitalized football player Stan Dzura will be this year's Santa Claus, and his sponsoring organization, Alpha Xi Delta sorority, has won the Cal Camp St. Nick contest for the second year in a row.

The sorority, under the leadership of chairman Kerry Harper earned \$218.00 from 21,800 votes at a penny a vote.

The sorority also sponsored last year's winner, Jerry Goldstein, current ASUC President.

In order to raise funds, the sorority sold mistletoe, candy, donuts, and suckers, at a table in the Student Union Plaza. The sorority also hashed at fraternities and auctioned themselves off to do various tasks such as car washing, mending, and ironing.

Also in the running was second place winner, Don Lively for the freshmen and Brick Muller Society with \$79.79; Joe Eisenberg for Kappa Delta with \$53.98; The Ugly Man 1966 for the Alpha Phi Omega's with \$1, and Steve Sander for Cheney Hall with \$170.13.

The money will be donated to Cal Camp and the World University Service.

Talk to Probe 'Why Vietnam?'

The American Legion will sponsor a discussion asking "Why Vietnam?" at 8 p.m. today in Veterans Memorial Hall at 1931 Center Street, Berkeley. Marine Corps Major Richard Barty, an artillery officer stationed in Vietnam, will speak.

LARGEST SELECTION IN NORTHERN CALIFORNIA

BERKELEY LUGGAGE

FINE GIFTS IN LEATHER

BRIEFCASES, LUGGAGE, HANDBAGS, ATTACHEE CASES, QUALITY IMPORTS, LEATHER GOODS

FREE MONOGRAMMING

BEST VALUES IN THE BAY AREA

2116 Shattuck Ph. 841-5377

Studies piling up?
Pause. Have a Coke.
Coca-Cola — with a lively lift
and never too sweet, refreshes best.

THE BERKELEY FACULTY HAS GIVEN OVER \$20,000 TO OUR BUILDING FUND

THEY KNOW A GOOD OPERATION WHEN THEY SEE ONE.

UNIVERSITY STUDENTS CO-OPERATIVE ASSOCIATION

2175 Allston Way TH 8-1936

things go better with Coke

Bottled under the authority of The Coca-Cola Company Inc.

The Coca-Cola Bottling Co. of California, Oakland, California

Coast Clubs Blush; Duke Supplants UCLA

Compiled from AP and UPI dispatches

Perhaps rather than asking a lot of embarrassing questions, the Northern California Basketball Writers and Broadcasters decided not to hold a coaches' luncheon yesterday.

Thus, USF mentor Pete Peletta didn't have to explain how Cazzie Russell burned his NorCal Player of the Week, Joe Ellis, for a record 45 points in leading Michigan to an easy 96-78 rout of the Dons in Chicago Saturday. And Cal

coach Rene Herrerias didn't have to recall the painful last 14 minutes against Nebraska Saturday, when his Bears managed just 10 points, blew a 15-point lead and lost 70-68.

MEANWHILE, THERE are plenty of pretenders today for the title of national champion, which appears shaky in the grasp of UCLA.

Heading the list are the Duke Blue Devils with Bob Verga and Jack Marin, who won the top ranking in the UPI coaches' poll

after walloping the Bruins twice over the weekend, 82-66 and 94-75.

Rated just behind Duke is St. Joseph's, while Vanderbilt, Kansas, Michigan, Minnesota, Providence, UCLA, Brigham Young and Wichita round out the top 10.

Other potential kingpins are Bradley, Iowa, Kentucky, Dayton, Temple, Princeton and Syracuse, as well as Connecticut, Colorado State U., Utah, Oklahoma City, Texas A&M, Chicago Loyola, Western Kentucky, DePaul and Boston College.

UCLA, WHICH suffered two straight defeats for the first time in years, must still be reckoned with as the team picked before the season opened to win an un-

precedented third straight national crown.

"Every team plays poorly away from home," said UCLA coach Johnny Wooden after the disasters against Duke. He referred to Duke's upset on the road by South Carolina last Monday and could have included Michigan's road defeat by Wichita last Wednesday.

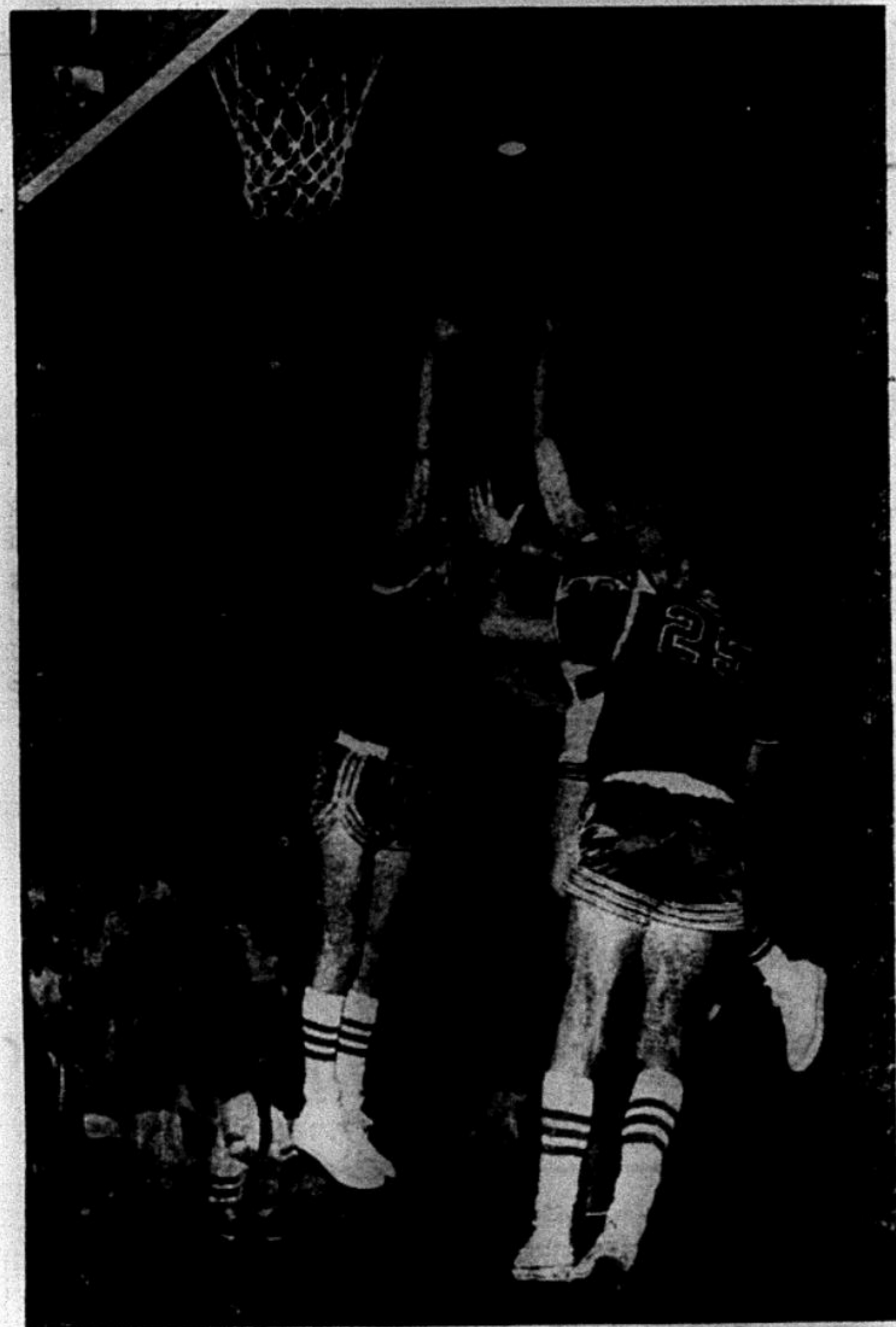
The Bruins were clobbered on the backboards by Duke, after handily whipping Big 10 teams Ohio State and Illinois, and their outside shooting also faltered against the Devils. They sorely missed guard Freddie Goss, who can hit from outside and whose presence would free Kenny Washington for duty at forward. Goss

is still recovering from a mysterious stomach illness which has not yet been satisfactorily diagnosed.

UCLA will be back home in Los Angeles this week ready to show there's life in the old boy yet. The unbeaten Kansas Jayhawks (5-0) get the chance Friday to test their championship aspirations. On Saturday the Cincinnati Bearcats will get their whack at the Bruins.

KANSAS KNOCKED St. John's of New York from the unbeaten ranks 61-55 Saturday while Cincinnati humbled South Dakota 112-66.

Michigan rebounded from its Wichita defeat by beating San Francisco and is looking ahead to its meeting with Duke next week.



ROARING RUSS . . . California guard Russ Critchfield drove between two St. Mary's Gaels to score this layup. Critchfield is averaging 15 points per game and hitting over half of his field goal attempts, and he may become the first sophomore in 11 years to lead the Bears in scoring.

Daily Cal Sports

JOHN RODGERS
Sports Editor

GLENN BECKER, Night Editor

GEORGE BAKER
Asst. Sports Editor

All-U Grid Tilt Matches—

Theta Delts vs. Barristers

National League football champion Theta Delta Chi will meet American League champion Boalt #1 today at 3:30 at Kleeberger Field for the All-U laurels.

Paced by the passing combination of Dan Miller and Henry Richmond, the Theta Delts should be given the edge on past performances in the tougher league. Boalt #1 has yet to meet a team that runs like the well-oiled Theta Delts machine.

But whatever the outcome, the traditional American-National League rivalry will be hard-pressed to match the UC football championship game Friday. The Rejects' passing combination of Barry Schieber and Dave Weise told the story as they upended the Sons of Bowditch by the score of 46-40. Even the fine individual

performance of Andy Messersmith, star varsity baseball pitcher, could not overcome the well-balanced attack of the Rejects. Messersmith accounted for six scoring catches by the end of the game.

For the past few weeks, with most eyes turned to football, the basketball season has been in full swing. Sigma Nu should be favored to retain the All-U championship it captured last year. Few National or American League teams have the height Sigma Nu has to offer, or its speed and depth. Phi Kappa Sigma also should have a shot at the National League title.

Last year's American League champion, Ehrman Hall, has lost the nucleus of that squad. The Commuters, Boalt #1 and Deutsch impressed in last week's opening encounters. One of these three could meet Sigma Nu in February for the All-U cage crown.

With much action in the minor sports last week, and the addition of points in handball, horseshoes and boxing, SAE stretched its grip on first place in the National League and the Commuters did likewise in the American League.

HHH to Announce Track Arbitrators

WASHINGTON (AP)—A five-member board of arbitration will be appointed Tuesday in an effort to settle the jurisdictional dispute between the Amateur Athletic Union and the National Collegiate Athletic Association.

Vice President Hubert H. Humphrey will announce the members at a news conference at 11 a.m. EST.

Creation of the panel was provided in a resolution adopted by the Senate last Sept. 20 in hopes of resolving the controversy over participation of athletes in open track and field events.

Announcements

SPORTS STAFF

The Daily Cal sports staff will report to Ye Newe Office at noon today with teeth brushed, hair combed and smiles painted on their faces. The occasion: we are to be reproduced (Ye gods!)—on film, that is. Our collective portrait will be photographed, so be there, fans.

SAM. Theta Delta Chi, Phi Epsilon Pi, and Lambda Chi Alpha round out the top five Greek houses.

Boalt #1 fell 170 points behind the Commuters in second place. In the American League the fight seems to be for third among Norton, International House, and Ehrman.

INTRAMURAL STANDINGS

National League	
1. SAE	825
2. SAM	685
3. Theta Delta Chi	620
4. Phi Epsilon Pi and Lambda Chi Alpha	560
American League	
1. Commuters	1015
2. Boalt #1	845
3. Norton	670
4. International House	650
5. Ehrman	635

Blues Battle Undefeated Contra Costa

By JOHN MORTHLAND

Coach Dick Doughty's junior varsity cagers will attempt to get back on the winning track tonight when they invade Richmond to battle highly-regarded Contra Costa JC.

Tip-off against the undefeated Comets is 8 p.m. Contra Costa will carry a 6-0 record into the game, and in view of the Cal Frosh victory over City College of San Francisco, will probably be rated the best JC in the state.

Three members from the Harry Ells High School team which captured the Northern California title in 1963-64 are now cavorting for the Comets. They are Wes Russell, Gary Lloyd, and Vince Clemens. Lloyd played freshman basketball last season at Bradley University, but returned to Richmond this season.

Following last weekend's 66-65 loss to Laney JC of Oakland, the Blues' record stands at 1-1. The JV five had defeated St. Mary's, 83-59. The opening win over the Cal frosh does not count on the record.

Eric Unruh, one of four Bears to hit in double figures against Laney, is the leading scorer with 37 points in two games. Also impressive for Cal last Saturday were high-point man Bob Nichols, grid star Jerry Mosher and Don Ready.

Great Moments Cage Champs, Then Runnersup

By VIC BEDOIAN
and GLENN BECKER

The year 1959 saw California reach the pinnacle of collegiate basketball success—the NCAA championship. Right through the final tilt with West Virginia, the Bears were lightly rated by basketball observers east of the notoriously chauvinistic Bay Area sportswriters.

The Bears didn't lose much from the championship club—notably guards Denny Fitzpatrick and Al Buch and forwards Bob Dalton and Jack Grout—and they were not able to sneak up on the nation's basketball powers the next season as they had in 1959.

Returning were All-American center Darrall Imhoff and his back-up, Dick Doughty, who gave Cal two postmen better than anyone most clubs could boast. Forwards Tandy Gillis and Bill McClintock gave coach Pete Newell experience in the front court. They were of contrasting types; McClintock was a rugged 6-4 ex-Marine who rebounded well and let everybody know it when he was around the backboard, while Gillis was a lanky 6-6 and gave the Bears their most consistent outside shooting.

The Bears opened with a 64-48 win over U.C. Santa Barbara and ploughed past their next five opponents with relative ease.

CHRISTMAS VACATION brought the Los Angeles Classic in the new Sports Arena. Some of the best teams in the nation were invited, including the NCAA championship finalists of the previous year, California and West Virginia.

It looked as if a dream rematch would be played. West Virginia still had its great All-American guard, Jerry West, who had sparked the Mountaineer comeback against Cal the previous year which just fell short, 71-70. But Cal almost stood the West Virginians up.

The Bears routed Illinois, 62-48, in the first round, as Imhoff scored 23 points and grabbed 16

rebounds. The next night they met their most serious rivals for the Pacific Coast Conference title, Southern California, with its talented pair of forwards, John Werhas and John Rudometkin.

The Trojans raced to a 32-25 lead at the half and with less than two minutes remaining they still led by six. Then the Bear' full-court press finally proved too much for them and Cal pulled it out, 65-61. Gillis had 17 points and 10 rebounds in this one.

West Virginia had less trouble getting to the final tilt and the stage was set for another donnybrook. But the Bears threw out the script that called for them to hang on again at the wire and instead ran the Mountaineers right out of the arena. West was held to one field goal and eight points—which in retrospect is almost incredible—and Cal breezed to a 65-45 win.

THE BEARS LOST their first conference game to USC, but routed Troy 60-45 in the rematch and went through the remainder of their schedule unbeaten. They clobbered Santa Clara and Oregon in the Western Regionals and prepared to host the National Championships at the Cow Palace in San Francisco.

Once again Cal faced Oscar Robertson and Cincinnati in the semifinals and once again the Bears prevailed. Holding Oscar to 18 points while McClintock marched that and Imhoff bagged 25, Cal won 77-69. Meanwhile, Ohio State trounced NYU.

So there they were—Cal's veteran defending champs and the young, powerful Buckeyes with their sophomore stars Jerry Lucas, John Havlicek, Mel Nowell and Larry Siegfried. Bear fans hoped that defensive wizard Imhoff could contain Lucas and the others around the bucket, but the Big 10 champs hit well over 50 per cent in a dazzling shooting exhibition and trounced Cal, 75-55. A new champion was enthroned, but the old king had fought to the wire before surrendering his crown.

'Paranoid President' Journalist Lashes Left

By CHRISTINE CUDIAMAT

Conservative criticism was launched yesterday against liberal political policies and power structures by a noted journalist and columnist.

Ralph de Toledano, a former Newsweek senior editor, spoke on "Behind the Scenes in Washington" in his noon lecture in Wheeler Hall.

As a conservative and a news reporter, de Toledano said the present atmosphere of the press versus governmental bureaucracy is unique.

There is "almost an atmosphere of fear behind the official facade of our government. The bureaucrats are afraid of the press and the upper echelons of government," he said.

He said there are specific regulations that stipulate "anyone in the Pentagon who talks to a reporter must make a full written report to the Assistant Secretary of Defense Arthur Sylvester. This includes civilians as well as military people."

As a result, he added, "the people who have information are afraid of their bosses and the press."

De Toledano asserted this policy has stemmed from several people including President John F. Kennedy.

Kennedy would tolerate "no opposition or criticism," according to de Toledano. He said President Lyndon Johnson is not as rigorous as Kennedy along these lines, but has "a paranoid attitude about his position and his critics."

De Toledano also alleged there are a series of governmental power groups, obscured from public view, which are headed by the Pentagon power center.

Besides President Johnson, and what he termed the "White House Gang," de Toledano asserted that Defense Secretary McNamara "hold a unique position in American government."

"No man after President Johnson," de Toledano said, has "more military power and dominance at Cabinet and at National Security Council meetings. McNamara also represents programs at Congress which are remote from the Pentagon," he said.

"In Vietnam, McNamara does not go to see what the troops are doing. He goes there to discuss diplomatic matters, and this is not the job of Secretary of Defense."

De Toledano said the "Secretary of Defense is not a position of policy. It is primarily a technical job, beyond which McNamara has moved."

"McNamara is the closest man to the President and the one the President turns to first even in the New York black-out," he said.

De Toledano said of the Pentagon itself, "it is completely computerized."

"Everything known about all Congressmen, from

computer cards and is used for putting on the squeeze to get some legislation through."

The overall conflict de Toledano submits, is the "conflict between those who fear control by the Federal government and those who would see it grow, and grow and grow."

"I speak as a conservative and as a conservative I have a great fear of the government. The government as a necessary evil, must be restrained and its role in the economic life of the nation must be restrained," he said.

On the other hand, de Toledano supports strong government military policy.

"My prediction is we will soon be bombing North Vietnam and heavy industrial areas," he said.

"That's why McNamara went to Vietnam . . . to suggest what we call escalation."

"I believe the foreign policy issue is the most important issue of today," he said, "and if Johnson is wrong, we won't have to worry about domestic policy at all. We'll be destroyed."

De Toledano supports forceful action because, "One, if you are going to fight you can't fight in a half hearted way. And two, in the present situation, if Vietnam goes or even if there is a dead lock, it will become like the Philippines, who were once pro United States but have now become disenchanted."

"One of the causes of disenchantment is the feeling that the United States is not prosecuting the war as vigorously as it might."

De Toledano then talked about federal aid to education.

He said conservatives are opposed to such aid because, "We think it's unnecessary."

"We've said all along federal aid would mean the setting up of a national school system controlled by the government. If this situation were to become established, it would deaden the system and you'll get a grey conformity."

He said, "I see nothing wrong in Federal grants to universities for research, but the pattern this has fallen into has become pro-military and this upsets me."

"There have been very few grants to the universities for pure science. It's all for more technology and new mechanisms."

"We conservatives are sometimes the butt of violent attacks," he continued. "Working in Washington has not completely dismayed me. There is still hope."

Evidences of changing attitude is increasing "day by day, month by month and year by year even though it is not yet reflected in the national magazines or newspapers," he said.

Correction

In the ASUC election supplement published in yesterday's Daily Californian, John Simmons of Slate was incorrectly listed as running for Commuter-Independent Representative. He is instead seeking one of the Representative-at-Large seats.

Other candidates running for rep-at-large are Marc Fairman, Dan McIntosh, Roosevelt Williams, Bruce Henstell, Rich Smith, Henry Weinstein, Bob Keagy, Dave Frizbane, Barry Smith, Garrett Riegg, and Robert Lane.

The Baltimore Sun reports that a pub in the town of Rhosnesby has asked the local woman's college to keep the girl students out because their foul language shocks the patrons. The main patrons of the pub are miners and steelworkers.

California will not have any agricultural land left in 50 years, if the present rate at which it is being lost to urban uses continues, Frank Bingham, soil scientist at the University, Riverside, warns.

... perfectly translates a new complicated society"



Permitted to explore ever areas usually forbidden. JAN and GUN MYRDA have emerged with

CHINESE JOURNEY

—in which photographs (many of them in color) and text synthesize in a direct report on how Chinese Communism has actually affected the lives of the people. 8.95

Sather Gate Book Shop

2335 Telegraph, 843-0580

Smoke But No Fire

Three fire engines, a fire chief's car, and a policeman or two rolled up in front of Dwinelle Plaza shortly before noon, yesterday, in search of a fire.

However, it was a false alarm, according to a policeman. Someone just pulled a fire alarm box in Dwinelle Hall, he said.

With no fire or smoke in sight, the firemen and police left the area shortly after 12:05 p.m.

Christmas Classic Reading Set

An oral reading of Charles Dickens' "A Christmas Carol" will be given by Speech Professor Garff Wilson at 4 p.m. tomorrow in Heller Lounge of the Student Union.

Wilson's annual reading of the Christmas classic has become a tradition at the University.

Barbara Miller, chairman of the Union Program Board, said: "Garff Wilson's interpretation of

'A Christmas Carol' is always one of the highlights of Cal's Christmas activities. We expect the same large enthusiastic crowd as in past years."

PAYLESS
2394 Telegraph
RECORDS
Most Complete Selection
BIG DISCOUNTS

POPS - JAZZ - CLASSICS

DIAMOND NEEDLES
STEREO PHONES
FM RADIOS
\$20 to \$200
RECORDING TAPE
BALCONY BARGAINS
MONO & STEREO
FROM **99c**

THE DAILY CALIFORNIAN
400 Esplanade Hall

Peggy Krauss, editor; Jim Branson, managing editor; John Oppedahl, city editor; Barry Bishin, assistant managing editor; Lawrence Gartner, assistant city editor; Konstantin Berlandt, feature editor; John Rodgers, sports editor; Chris Shores, business manager; Ken Lax, advertising manager; Tomas Zierer, production manager; Dr. Schutz, promotions manager.

Published daily except Saturday and Sunday and University Holidays during the University year by the Associated Students of the University of California. Entered as second class matter on March 2, 1961, in the Post Office at Berkeley, California, under the act of March 3, 1879. Subscription price \$6.50 a year; \$3.50 a semester.

50

BOAC will leave you alone in Europe.

On a swinging BOAC Grand Orbit student tour you can explore the coast of Portugal, gaze at the Rif Mountains of Morocco, take an Adriatic cruise, visit the Islands of Greece, absorb culture in Spain, France, Italy and England, find yourself a Scandinavian viking, lift your stein in Germany, Switzerland and Austria, play roulette in Monaco, and have plenty of time to roam around on your own. The whole package will cost you \$1921.30* round trip from New York. And that includes most meals, hotels and everything else. (You can also jet BOAC direct from Miami, Boston, Chicago, Detroit, San Francisco, or Honolulu. And join the group in London.)

To be sure you get what you pay for we hired some young tour leaders from Oxford and Cambridge and told them not to bug you.

They were all for it. They said that's the only kind of tour they'd be interested in

leading anyway. And that they weren't above a little freedom themselves while working their way through college.

So that's the kind of deal you'll get on a BOAC student tour of Europe this summer.

Clip the coupon for more facts. And cut out for Europe.

*Based on economy jet fare and double or triple occupancy in hotels.



British Overseas Airways Corporation, Dept. BE-178, Box No. VC 10, New York, N.Y. 10011. MU 7-1600.

Please send me details on the 1966 Student Tour Program.

Name _____

Address _____

City _____

State _____ Zip Code _____

IF YOU'RE ONLY FOOLING, DILUTE IT



RIP-TIDE

After-Shave, \$3.50, Cologne \$4.00
Available at these campus stores:

HARRIS' AT UNIVERSITY SQUARE
ROOS/ATKINS, INC.
STROM'S, INC.

KAL-FM Hopes Rekindled

(Continued from page 1)
 Last week KAL's Assistant Manager Jim Welsh and Manager Kennedy talked with Vice Chancellor Earl Cheit.
 KAL plans an official meeting with the Chancellor on January 4.
 Cheit declined to comment yesterday on the scheduled meeting with the Chancellor.
 Since only the University Board of Regents can apply for the FM license from the FCC the Chancellor's vigorous support is needed, Kennedy said, if the University is to try to obtain the ten watt license.
 From the depths of Dwinelle, Radio KAL reaches about 4000 students.
 It broadcasts through telephone cables, which rent for about \$50 a year, to dormitories, fraternities, sororities, and co-ops.
 Portable as well as plug in radios can receive KAL in buildings wired to KAL's phone cables. The windowless headquarters

has three studios and a growing collection of records sent by record manufacturers.
 More than 100 students work at the station, which broadcasts from 4 p.m. to midnight every day. Generally, KAL programs 70 per cent music, news on the hour, and sports events.
 No one is quite sure where the \$3000 required for an FM transmitter would come from, Welsh said. The last proposal was to take the money from unallocated incidental fees.
 However, he indicated, this once-and-for-all expense is a small problem compared to securing approval for the license in time to start hearings before the FCC to get the remaining ten-watt frequency.
 The operating budget for the station is currently \$2000 a year. A licensed FM station will cost about \$3500 a year. No one on the staff is paid, however, and there are no commercials.

review Lenny Bruce in Translation

By GLENN BECKER

SUNDAY EVENING—the original Filthy Speech Movement came to his spiritual home, Berkeley, for a one-nighter at the Community Theater, and I was dispatched with two front-row center tickets to review him.
 Frankly, I was somewhat envious of Lenny Bruce. Here, I figured, was a guy getting paid a lot of money for saying things I say for nothing. I was wrong. Bruce has not earned his popularity with his ever-flowing stream of obscenities, but rather with a pungent wit uncompromising in its ridicule. To be sure, the profanities are part of the show; but they are obviously not just a calculated stage device. Bruce manifests a sense of refreshing, coarse honesty and the language he uses is as natural to him as "Cuber" and "Africker" were to John F. Kennedy.
 One of his funniest moments Sunday, in fact, dealt with just this matter of speech habits. He was discussing how he felt sorry "for the Grand Kleagle of the Klan—whatsisname? I mean, they hauled him in front of the House Unamerican Activities Committee and shot a lot of questions at him—this guy's from the South and it's like another country down there and they speak differently and this poor guy understood maybe one out of 10 words they were saying."
 "TAKE LYNDON JOHNSON. They didn't let him talk for six months until he could say Negro. 'Nigra.' 'No. KNEE-GROW.' 'Negra.' 'No. KNEE-GROW.'"
 Before relating how Bruce got launched on this and other parts of his performance, I must set up a short code by which we may circumvent the policy of this paper against publishing the more graphic appellatives of the English language. Thus, a parenthetical "bang"—(!)—shall henceforth signify that scatological term most literally applied to male cattle. This mark so modified—(h)—will alter the description from bovine to equine. (S) will signify a two-syllable word meaning anus; (") will signify the male sex glands, and with that we are probably ready to proceed:
 "The House Unamerican Activities Committee," Bruce announced halfway through the performance, "is (!). I'll tell you why they're (!). It's their treatment of the Ku Klux Klan. It's just a repeat of the Communist witchhunts."
 HE CAME ONSTAGE in a trench coat, blue jeans and old boots, pushing a rostrum. "I found this backstage. I like it. It's faith and goodness—and veneer. . . . Catholicism is like Howard Johnson's . . . You know, they grant franchises everywhere. . . . They keep saying the Messiah's coming back. They've tried five times, but He's embarrassed. I mean, Charlton Heston's 6-foot-3 and He's only 5-1. . . ."
 "When I was a kid I had this hostility toward Christians. They all could fight and I couldn't. But I respected them for it, too: there was this ambivalence. Well, here's Ruby—a Jew in Texas. He figures like this. He kills the guy that killed the President and then what'll Texans say. 'Ooh, there's the guy that killed Oswald. Ooh, jeez, that guy's got the (") . . ."
 On Demonstrations: "People are demonstrating against the police department and the policemen. They can't separate these people from the authority vested in them."
 "It started like this. People decided they needed rules, so they said, 'okay, here's A, B and C. We eat in A, we sleep in B and we throw the crap in C.' One night a guy's sleeping and—Pow! He's got a face full of crap."
 "HEY! WHAT THE HELL'S going on? I just got a face full of crap!" They told him, Never mind, must be a mistake. Few nights later—Pow! Guy's got a face full o' crap. Now he's really mad and pretty soon they decide they need someone to enforce the rules. So a guy starts hirin' men to enforce the rules and he tells 'em, 'You see anyone throwin' crap, you throw 'em in the craphouse. I gotta stand back here outa sight, because I gotta do business with these (\$). Now, if they ask us why we hired you, we'll tell 'em, well, it takes someone with that sort of mentality to do this job. But that's (h), so never mind that."
 "This confusion between people and the authority vest in them started with the early missionaries. Someone would ask them, 'Are you God?!!' 'Well, no, but . . .'
 "The post office is the one place where the authority and the man are the same. I mean, the postman wouldn't let a package go three cents light for the rabbi's priest's ass!"
 CHANCELLOR HEYNS HAS said that college students today are absolutely bugged by hypocrisy. If it particularly bugs you, catch a bit of Lenny Bruce; he's with you and he puts it across.

Louis Lomax: 'Integration?'

Louis Lomax, author, television personality, and lecturer, will speak at noon tomorrow in Pauley Ballroom. His topic will be "Integration into What?" A reception will follow at 1 p.m. in Stephens Room of the Student Union.
 In one of his books, entitled "The Negro Revolt," Lomax wrote that "Whatever the Negro is, he is an American. Whatever he is to become — integrated, unintegrated — he will become it in America. . . . Our lot is irrevocably cast, and whatever future awaits America, awaits the Negro; whatever future awaits the Negro, awaits America."
 He went on to state, "The ultimate goal of the Negro revolt is when a Negro will stand or fall on his own merits, neither hindered nor helped by the fact that he is a Negro."
 Lomax now has his own weekly television show in Los Angeles on Sunday evenings.

Calendar

UNIVERSITY MEETING

Annual Meeting devoted to Christmas music will be held at 2 p.m., today in the Pauley Ballroom, Student Union. Chancellor Roger Heyns presiding. Annual Christmas message will be delivered by William Dennes, Mills Professor of Intellectual and Moral Philosophy and Civil Polity, Emeritus. Christmas Music by the University Chamber Band and the Glee Club and Treble Clef Society, with the audience joining in traditional carols. All other University activities will be suspended for the 2 p.m. to 3 p.m. meeting.

COLLOQUIUM

C. K. Birdsall, professor of electrical engineering, "Confined and Non-Confined Plasma Instabilities, as Obtained from Nonlinear Computer Experiments." 4 p.m., 277 Cory Hall.

SEMINAR

H. T. Spieth, professor of zoology, Davis: "Mating Behavior and Population Structure of Native Hawaiian Drosophila." 4 p.m., 230 Mulford Hall.

LECTURES

William McEwen, research consultant in the behavioral sciences, Calif. State Health Dept., will speak on "Researching Comparative Social Structure in a Revolutionary Setting — Bolivia, 1964-66." 4 p.m. at the Institute of Inter. Studies, 2538 Channing Way, Room B-200. Students and faculty are invited.

David Lyon, professor of chemical engineering: "Energy Transfers Between Liquid Helium and Solid Surfaces." 8 p.m., 145 Dwinelle Hall.

Panel Discussion: "Controversy over the Redwoods." Moderator: Henry J. Vaux, professor of forestry; discussants: Edgar Wayburn, vice president, Sierra Club, and Hardin Glascock, Jr., forest counsel, Western Forestry and Conservation Association. 8 p.m., 155 Dwinelle Hall. Public \$2.50, students \$1.50. Tickets at door.

Gaston Hall, professor, The University, Warwick, England: "Le Bourgeois Gentleman" (In English). 8:15 p.m., 159 Mulford Hall.

Student Groups EUROPE

<p>CRIMSON Series</p> <ul style="list-style-type: none"> Grand Tour ★ Continental Tour Favorite Tour ★ Fiesta Tour Comprehensive Tour Holiday Tour Extensions to Greece & Israel <p>BY STEAMER OR AIR \$840*</p> <p>35 TO 64 DAYS from</p> <p>for folders and details SEE YOUR LOCAL TRAVEL AGENT or write UNIVERSITY TRAVEL COMPANY</p> <p>UTRAV SPECIALISTS IN STUDENT TRAVEL SINCE 1926 Cambridge 38, Mass.</p>	<p>DISCOVERY Series</p> <ul style="list-style-type: none"> Discovery Tour Explorer Tour <p>BY STEAMER OR AIR \$770*</p> <p>42 TO 56 DAYS from</p> <p>* excluding trans-Atlantic transportation</p> <p>or Form your Own Group</p> <p>Ask for Plans and Profitable Organizer Arrangements</p>
--	--



during vacation come in and browse...
OUR UNIVERSITY SHOP
 good-looking suits and sportwear
 for undergraduates, in sizes 36 to 44

We have a comprehensive and distinctive selection of clothing and furnishings in our University Shop, specially designed for undergraduates. Included among our 3-piece suits are worsted flannels, sport models in worsted cheviot, unfinished worsteds in herringbones...and interesting new designs and colorings in tweed sport jackets...all reflecting Brooks styling and good taste.

Suits, \$85 to \$95 • Tweed Sport Jackets, \$50 and \$60
 Tweed Topcoats, from \$90 • Flannel Blazers, \$55
 Our Warm Outerwear, from \$35

Prices slightly higher west of the Rockies.

ESTABLISHED 1818

Brooks Brothers
 CLOTHING

Mens & Boys Furnishings, Hats & Shoes

201 POST ST., COR. GRANT AVE., SAN FRANCISCO, CAL. 94108
 530 WEST 7th STREET AT GRAND, LOS ANGELES, CAL. 90014
 NEW YORK • BOSTON • PITTSBURGH • CHICAGO

GUITAR PICKERS !!

Be the FIRST kid on your block to be

Magnificently ★ IN TUNE ★ The EASY way

the new way to tune is VU-TUNER™... tune your guitar visually... quicker, easier, & better than the (ugh) ear method (inexpensive too)...

VU-TUNER IS AT YOUR MUSIC STORE NOW ★

NOW! THE SENSATIONAL DOBY ("The in Crowd") GRAY

and his "Persuaders" TEENAGE DAYS

Folk and Roll with The Schillings
 Sundays from 5 p.m.

Win the new Rolling Stone Album
 Tina Loo (in the glass booth)

Whisky A Go-Go

568 Sacramento St., S.F.

NO COVER—NO MINIMUM—NO DRESS RESTRICTIONS
 Sundays from 5:00 p.m.—Weekdays from 4:00 p.m.

Saturdays from 8:00 p.m.

WHERE THE ACTION IS!

How do you know you can't wear Contact Lenses? New techniques have been developed which now enable almost everyone to be successfully fitted for a reasonable fee.

For information call 843-9068 or visit

DR. RALF W. LORENZ
 Optometrist

1/2 block from campus
 2132 Center St.

The Daily Californian WEEKLY MAGAZINE

December 14, 1965

Issue Number 7

How to Save \$2,000,000 A Year—Public Power

By EDWARD C. HAYES
and MICHAEL HALEY

Can the Berkeley campus eliminate the incidental fee for its students? Can the University, which has slipped from fifth to fifteenth in salary scales among American public universities, restore itself to a nationally competitive salary position? In short, can the University find the necessary money to do either of these two jobs: about \$2,000,000 a year?

The answer to these questions lies, surprisingly enough, "deep in the heart of a contract"—the contract between the University and the supplier of Berkeley electric power, the Pacific Gas and Electric Company.

The Berkeley campus can save itself over \$2,000,000 annually by dropping PG&E and purchasing government-produced power, according to a study commissioned by the Regents and published in December, 1962. That saving alone, applied to each student in 1965, would practically abolish the incidental fee, and for the future could drown the talk of tuition charges in a flood of dollar bills.

That such a switchover to public power is both feasible and desirable can be seen by examining the University's electric needs and the history of its contractual obligations with PG&E.

Berkeley and PG&E

The Berkeley campus first began obtaining its electric power from the Pacific Gas and Electric Company in 1906, when PG&E bought out the California Gas and Electric Corporation. The early years of Berkeley electric consumption saw a gradual increase in purchases; but by the '50's, with the Livermore Radiation Laboratory and the expansion of the campus, the Berkeley power bill began to mount rapidly.

In fiscal 1953-54, it was \$389,395; by 1957-58 it was \$857,913; by 1960-61 it was \$1,471,660.

And by last year, fiscal 1964-65,

it had grown to a whopping \$1,895,000, even incorporating a rate reduction granted by PG&E which saved the campus over \$100,000.

The "overcharges," comparing the amount paid by the University in the past decade with the rates currently charged for government-produced electricity, appear in the chart accompanying this article.

While PG&E was thus milking the University it had become the world's largest privately-owned utility, with a net worth in 1964 of \$3,090,387,366, and net profits for that year of \$133,305,379. The small acorn had become quite an oak.

A CHEAPER SOURCE

But in the intervening years another source of electricity has appeared in Northern California. In 1934 the Federal government, against vociferous objection and strenuous lobbying by the private California electrical utilities, began construction of the Central Valley Project. The CVP was originally designed as a reclamation project, which, like TVA in the east, would control flooding and provide for irrigation, with a series of dams on major northern California rivers. Hydroelectric generators in combination with steam plants would provide a constant or "firm" source of cheap electric power that would help to pay for the project.

For decades the political lobbying muscle of PG&E and Southern California Edison, the largest utilities in the state, slowed the progress of the Central Valley Project so effectively that many of the dams proposed in 1934 have yet to be completed. In addition, PG&E managed to have its power lines connected to most of the Federal generators.

They also successfully stopped construction of any publicly owned steam generation facilities to "firm up" the hydroelectric power.

Hydro-operated generators slow down in the summer when Cali-

fornia's rivers "dry up," and steam-generated power is necessary to make up the difference. Without its own "firm" power facilities, the CVP had to depend on PG&E steam plants to perform this function, and it became necessary for the CVP to completely integrate its system with that of PG&E.

This integration allows PG&E to absorb all of the excess Central Valley Project power, up to 60% of the total produced in some years, which it buys at low gov-

ernment prices, then added to PG&E produced power to be sold to the campus at PG&E prices. PG&E is "in the middle," and has used its position to charge the campus a monopoly price.

In 1962 the Regents of the University, faced with the growing cost of power for the Berkeley campus, commissioned a study by R. W. Beck and Associates on the University's electric power service. That study reported, in December 1962, that the acquisition

of public power from the Central Valley Project would save the University a total of \$21.8 million over the next ten years, or approximately \$2 million annually, compared to the prices presently paid to PG&E.

CONTRACT RESTRICTIONS

Mr. Gerdes' interpretation of the contract's provisions are those of a monopoly utility not wishing to lose an extremely valuable customer. Other interpretations might be found.

The exact wording of the provision is, "Such energy shall be supplied to serve the loads of the United States and its customers . . . (who) are located and use such energy outside the corporate boundaries of municipalities wherein the Contractor (PG&E) serves at retail."

The provision is located in a subsection five times removed from the main article. It appears to exist solely to frustrate just such attempts as the University's to receive public power.

SECESSION NO SOLUTION

Because PG&E declined to wheel CVP public power to the Berkeley campus the Regents have been considering "de-annexing" the University from Oakland and Berkeley. But, again, in the words of the Blade-Tribune (August 29),

"This poses problems. Because certain civic facilities, such as fire protection and sewage removal, now come from these municipalities. Furthermore, the University has expanded, it has grown in a checker-board fashion with blocks of University property separated by other blocks belonging to the cities."

At their September meeting the Regents dropped the idea of de-annexation.

The Power Cooperative

Temporarily frustrated by the refusal of PG&E to carry power over its transmission lines and unable to build its own lines under the 1951 contract, the University has looked elsewhere for a source of cheap electricity. It is not alone in this search.

In mid-November, the Bay Area Rapid Transit District, the city of Santa Clara, the San Francisco Public Utilities Commission, and the University announced plans to launch a combined study of the feasibility of producing and distributing their own electric power in conjunction with the State Department of Water Resources.

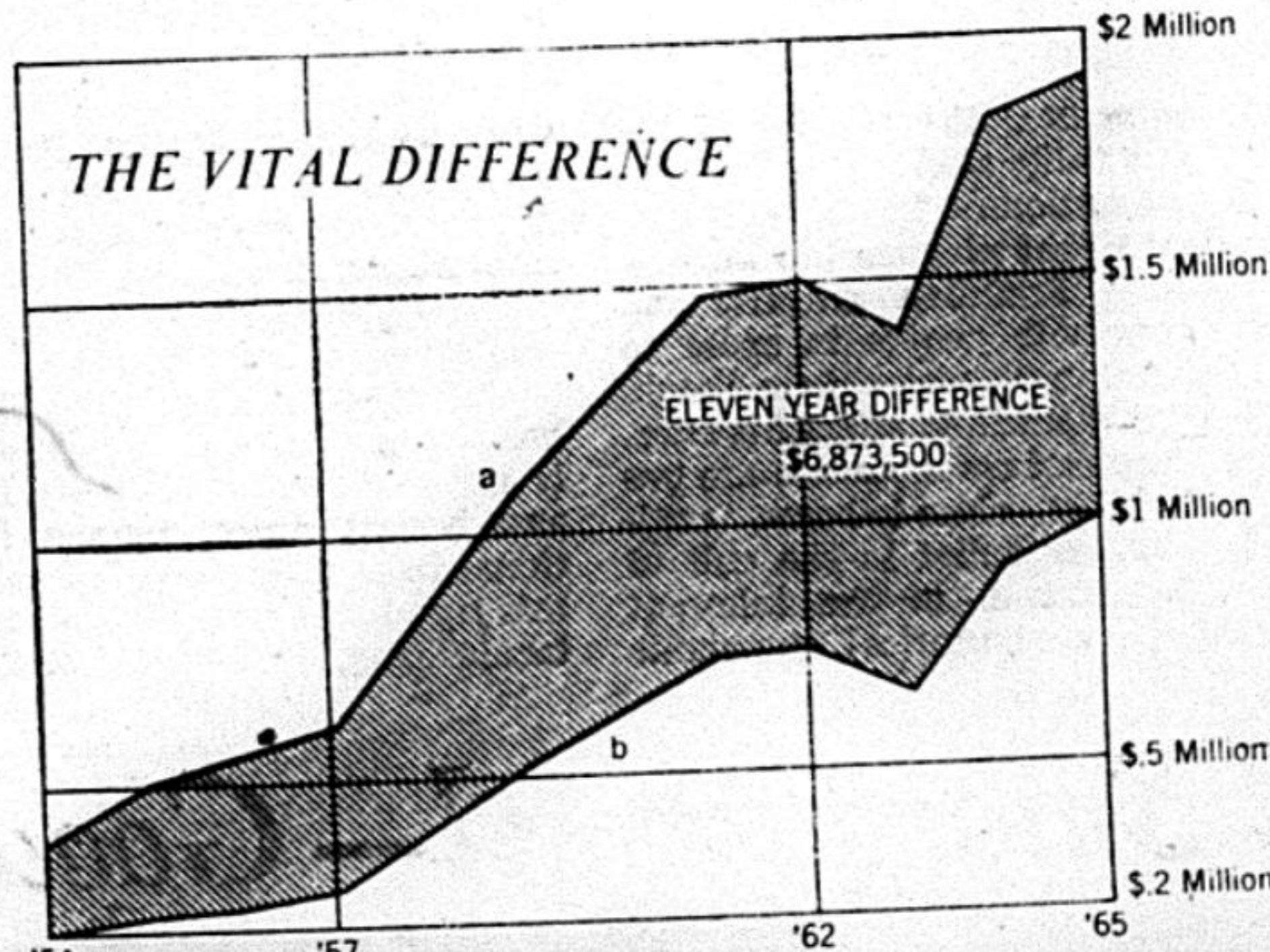
All of the participants in the study are in the PG&E service area, and all have reason for dissatisfaction with the rate.

San Francisco, which owns its own power generator in the Sierras at Hetch-Hetchy, and which wheels the power all the way to Newark in the East Bay, must then pay PG&E the fantastically high rate of 6.71 mills per kilowatt hour to wheel the power across the Bay. It has been estimated that the overcharges on this service to date are in excess of \$20,000,000. The rate is more than 650% higher than the rate that PG&E charges the closely accounted CVP. PG&E has the only power lines crossing the Bay, just as it has the only lines from Tracy to Berkeley.

3 MILLS CHEAPER.

Santa Clara, which owns its own distribution system, buys its power at retail. (August 29, 1965)

(Continued on page 11)



USING PUBLIC POWER, the Berkeley campus would have paid only \$6,520,000 for power (line b) in the fiscal years 1954-65 at the rate the Davis campus pays, 4.5 mills/KWH. Instead the University has paid PG&E \$13,394,000 (line a). The dip in 1963 came when the bevatron was turned off for maintenance.

ernment prices and then sells to its private customers at a minimum profit of 6.25%. PG&E's privileged position also allows it to wheel (transmit) virtually all of the CVP's public power allocations to preference customers

IN THE MIDDLE

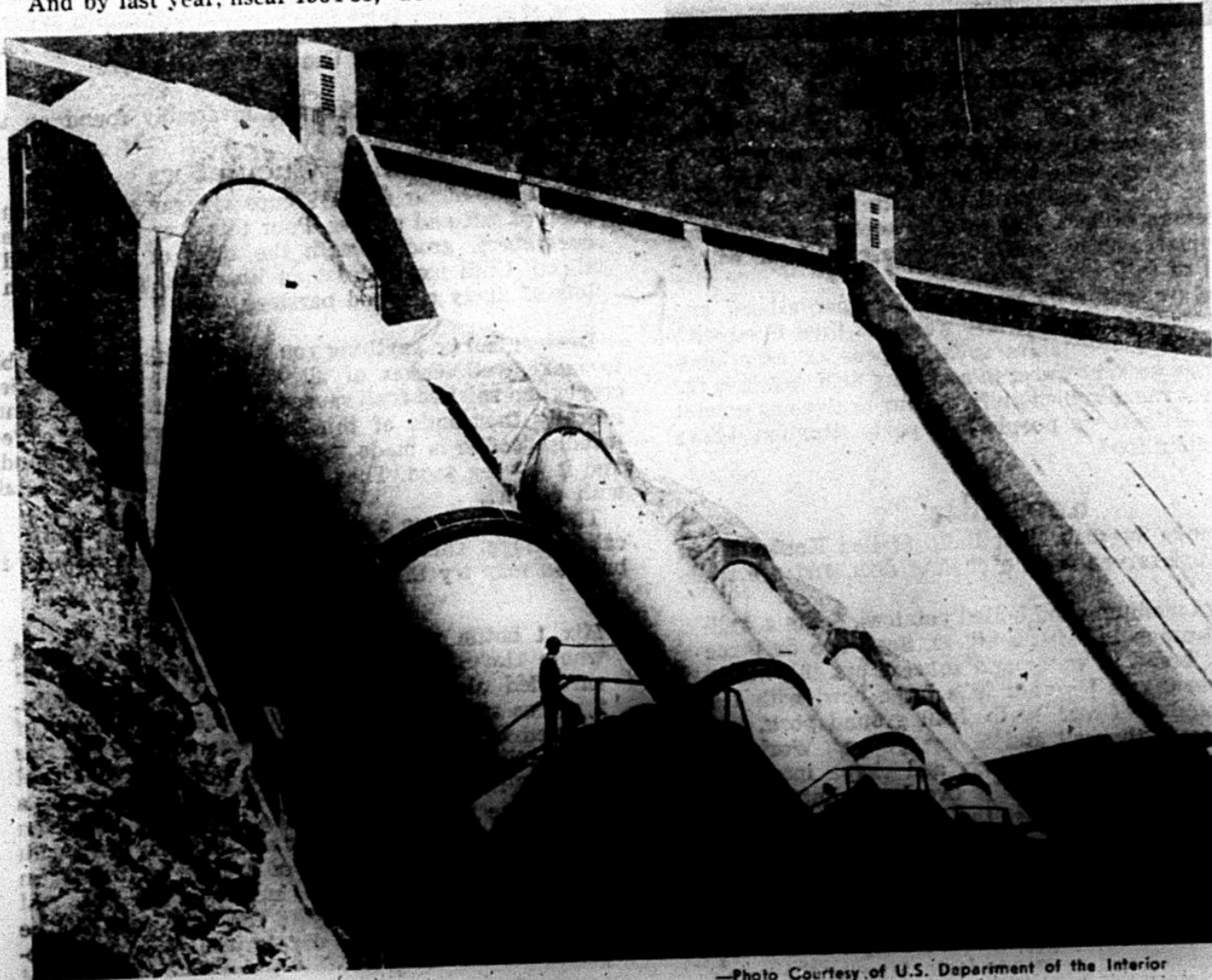
This, indeed, is how the Berkeley campus obtains its power: Federal power is generated at Federal dams where it is immediately purchased by PG&E at

of public power from the Central Valley Project would save the University a total of \$21.8 million over the next ten years, or approximately \$2 million annually, compared to the prices presently paid to PG&E.

The report was not publicized, but after the Regents meeting of July 15, 1965, Governor Brown requested a Berkeley campus "power allocation" from the CVP, and the Department of the Interior allocated 66 megawatts from CVP to the University. This allocation is nearly twice the power estimate used in the Beck report and substantially increases the possibility of savings. The University already owns and operates its own distribution system, so all that is necessary for the savings to become an actuality is the transfer of the allocated power to the campus.

The following passage from the Oceanside, California Blade-Tribune summarizes events after the power allocation:

"The problem of transferring this power from the nearest CVP substation at Tracy, 50 miles to the east of Berkeley, to the campus was left to the University for solution. On July 28 the University formally asked the Pacific Gas and Electric Company if it would "wheel" (transmit) the power to Berkeley on lines PG&E already has available . . . The PG&E response to the University's request of July 28 was the epitome of caution. The PG&E chairman, Robert H. Gerdes, wrote that the "understanding" the PG&E has with the Department of the Interior, going back to 1951, recognizes that it is not "practical" for federal power to be made available "within cities where the Company sells power at retail." (August 29, 1965)



—Photo Courtesy of U.S. Department of the Interior

WATER FLOWS through these penstocks, each large enough to hold a school bus, to power Shasta Dam generators, producing enough electricity to fill the needs of a city of 500,000. The Federally-constructed Shasta Dam is on the Sacramento river. Its spillway (at right) creates a waterfall—3 times higher than Niagara.

In The Last Analysis, Freud Has Gone Show Biz

By LYNN VERNIK

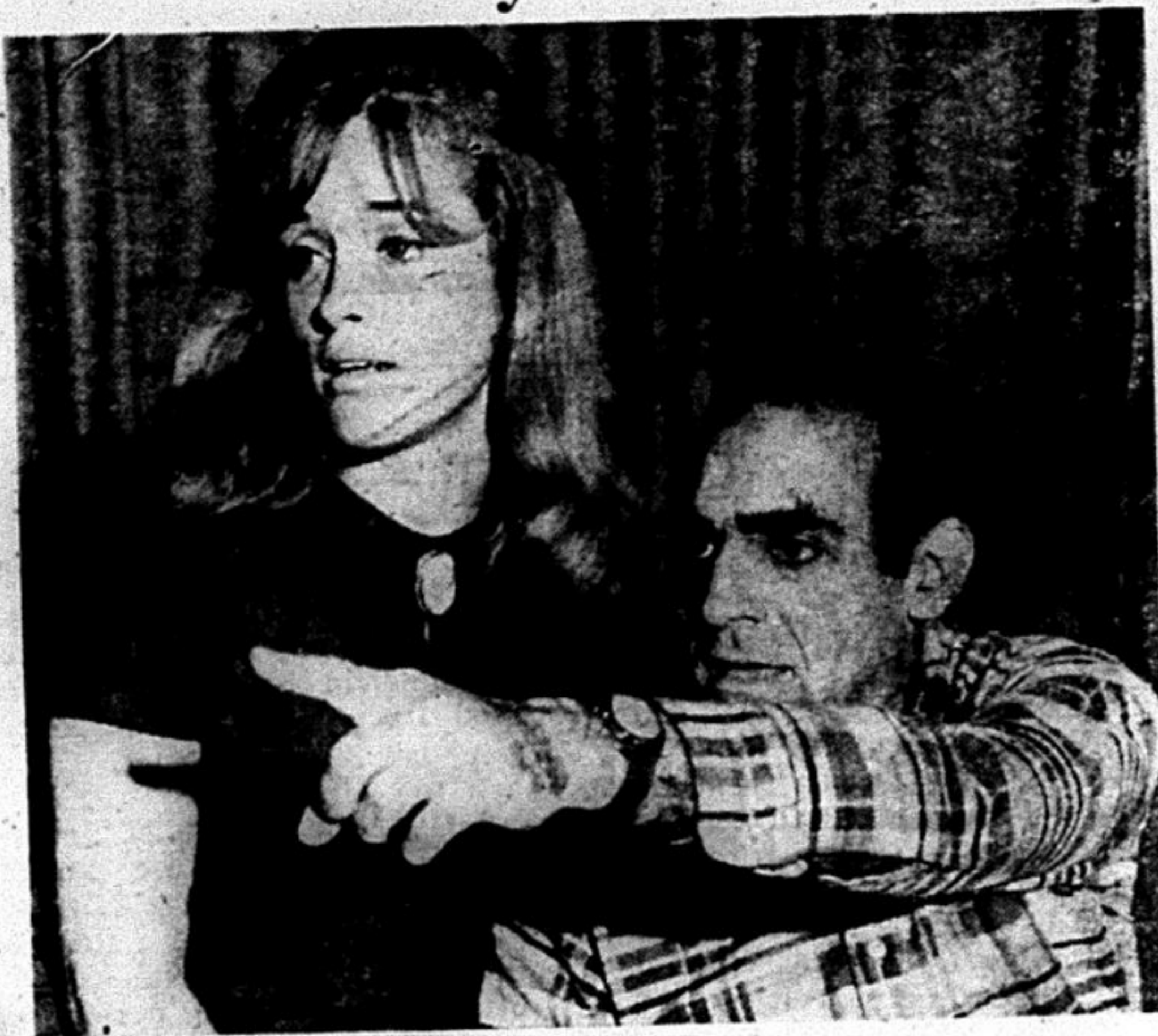
The Actor's Workshop production of Saul Bellow's *The Last Analysis* is an untidy energetic spoof on 20th century cultism.

The source of the energy is Abe Vigoda, a veteran of the New York Shakespeare Festival as well as of a recent New York production of *Seidman and Son*. Vigoda plays the lead role of Bummidge, a conglomeration of the eccentric joie de vivre that characterized the era of Jolson, Groucho Marx, Eddie Cantor, Charlie Chaplin and, yes, Milton Berle.

Bellow allows Shakespeare's line about all the world being a stage and the people merely players to melt into Freud's conception of the various stages of human development. The blending of the two results in Bummidge, an ex-vaudeville comic now playing psychoanalyst in a studio in a New York warehouse, involved in a closed-circuit TV broadcast to the Waldorf Astoria where the American Psychiatric Association is assembled to witness the ultimate experiment in auto-analysis.

It is Freud gone show biz with all of the exaggerated spectacle of TV "specials" and Brooklynese lending a wholesome, truly funny (in the good old bourgeois way, i.e., haha, ho, ha from the diaphragm) overall effect that sews up the battered sleeve of the underlying absurdist, piercing satire.

Bummidge's dream is to reopen a deserted vaudeville house and



ABE VIGODA (right), "the source of the energy," plays Bummidge. On his lap is Imogen (Bonnie Beecher), Bummidge's secretary.

there to heal the wounds of humanitis (alienated depression due to recognition of "the human condition") that plagues the masses. Through Freudian analysis, and working with people in order to (of all things) make them laugh, Bummidge intends to effect his cure. Its more serious moments are uncomfortably close-to-home criticism of our belief in the cult of Saviour Freud—in the inherent dangers of uncritical messianic

worship. If the play fails because these moments do not frighten us unutterably and hush the theater into hopeless silence, then the play has been true to its more comic vision.

And who can say that Freud has not gone show biz? America is not a place to allow its ideas and beliefs quiet, refined functional lives. Bellow has picked up this trend in American life—spectacularizing, TV specials, Hunt-

ley-Brinkley, Uncle Miltie craziness—and has it play havoc with Freudian thought. And no one in the audience can pretend that he doesn't know what is going on.

Bummidge is a Feifferesque Bernard who knows all about his Oedipal problems and frustrated childhood but refuses to believe it. Vigoda, in a backstage interview, said, "In his heart Bummidge doesn't believe it all — He's just searching for a new life. The guy is nuts, but he isn't that nuts."

The role of Bummidge is an impossible one. Although the play has been cut 20 per cent from its New York length, it still derives most of its energy from the main character played enthusiastically and respectfully by Mr. Vigoda. One cannot help sensing a Volponian mind at work in the character, a conniving busy energy toward which flock the play's minor characters, just as the gulls flock around the Alchemist.

There is a one-time biologist, now rat-catcher, brilliantly portrayed by Richard Bright, who has discovered via his analysis that he is too neurotic to laugh. The sexy good-natured secretary, Bummidge's wife, his whores, his snivelling, greedy son—they're all there to lick up the rewards of his frantic search for a past glory.

ONTOGENY

The highlight of Vigoda's acting is a scene in which he plays both European analyst and patient in a super-Freudian session. Or again when the cast, acting as Greek chorus, provides a chanted background while Bummidge in pantomime relives ontogeny recapitu-

lating philogeny. At any crisis Bummidge is ready to go back into his childhood to relive a trauma—anal, genital or financial—and in the finale he delves into his family life by way of a *This Is Your Life* as Psychodrama that literally reveals more about their lives than his status-seeking relatives care to recognize.

The rest of the cast picks up the energy emanating from Vigoda who, once into the role, becomes Bummidge to the fullest. In his excitement Vigoda's diction occasionally suffers. When he leaves the stage the action too often falters awkwardly due to lack of directorial management and staging.

BUMMIDGE'S MISSIONARIES

The play ends on a quasi-religious note. Bummidge, covered in white toga, Kakfaesque arms outspread, directs his "missionaries" to France and Germany—such very civilized places—to carry the gospel of Laughter. At once this is a solution and also Bellow telling us that such religious-tinged fanaticism is finally more dangerous than it is worth.

I do not think Bellow's play has revitalized the American comic stage. Nor do I think that the play is an avant-garde attempt at intellectual satire. It is an unbalanced, sloppy endeavor that often rises to brilliance. But it—and the Workshop's production—is sloppy like a big fat sandwich from a New York delicatessen is sloppy and dripping over the edges. In short, the play is a theatrical feast.

I recommend it.

A Modified Smorgasbord—Good for This Time of Year

By ANN WHIPPLE

As much as I like cold roast beef, ham and turkey, I feel a little apprehensive when I see them on the sideboard at a big party. In the first place, one is usually expected to cut them up oneself, or cajole someone else into doing it, which is a nuisance. Then, one doesn't want to eat too much for fear enough will not remain to feed the family for the next week. Perhaps I do my hosts an injustice here; but that is the feeling I always get, and it makes me uncomfortable.

On the other hand, I do not like parties with "themes" such as one finds lavishly illustrated in *McCall's* and the like magazines. In other words, I do think that party food should be simple and eminently edible, but not everyday fare.

A modified smorgasbord appeals very much to me. The combination of hot and cold dishes is good for this time of year, and the whole thing looks very attractive. Smorgasbord food goes very well with any type of liquor you serve, although, of course, it does best with aquavit and/or beer.

There is a good deal of etiquette surrounding a real smorgasbord, and for this reason it is wise to borrow only some of the dishes served at this Swedish institution. Swedish drinking, too, is not generally to American tastes: one takes one's little glass of schnapps and downs it, following the draught with a piece of herring on bread, or a glass of beer.

Chicken Gelatin

This is a very flavorful dish always served by my Swedish relatives at their parties. It is simply cut in slices.

Boil a chicken gently in half water and half dry white wine for at least an hour, or until it is very tender. Add to the stock two or three pieces of celery with their tops, a carrot, an onion, a bay leaf and a few peppercorns. Remove the chicken and remove the meat from the bones in small pieces. Strain the stock and boil it until it is approximately three cups. Soften two tablespoons of gelatin in cold water, add to the stock, and heat this mixture. Put the cut up chicken in a mold and pour the stock over it, straining again if needed.

Keep in the refrigerator until ready to unmold. Garnish with cherry tomatoes and watercress or parsley.

Fish in any form is always a big part of the smorgasbord, and herring especially plays a large part.

Pickled Herring in Mustard Sauce

Drain about two cups of pickled herring and arrange on a plate. Mix 2 tbs. prepared mustard, 3 tbs. vinegar and 4 tbs. sugar in a saucepan and heat until the sugar melts. Add about 2 tbs. olive oil. Add 2 cups beets cut in small cubes and ½ cup apples, also cubed. Pour this sauce over the herring and chill for 2 hours. Serve cold, garnished with parsley.

Have a plate of prettily sliced kippered salmon garnished with watercress and, near it, a plate of dark rye bread and some butter balls. This (including some of the watercress) makes splendid open-faced sandwiches,



—Photo by RICHARD VAUBEL

GOD JUL! SKOLI

which I like especially well with a glass of aquavit.

Have also a plate of fairly large shrimps cooked in a spicy stock, chilled and garnished with feathers of fresh dill and lemon wedges. Dill may be kept for a long time in the refrigerator by putting it in a closed jar with a good deal of salt.

Omelets are ordinarily served on the smorgasbord, and these are made in the ordinary way, and then filled with savory creamed vegetables such as peas or asparagus. Omelets may be kept warm in a chafing dish, but it is far better to eat them immediately. A four or five-egg omelet will serve at least six people in a party situation where there is other food.

Kottbullar

The famous Swedish Meat Balls (called Kottbullar in Swedish) are served from a chafing dish, and are made as follows:

Mash two medium sized boiled potatoes. Saute a well-chopped onion in a little butter. Soak two or three slices of bread in water and squeeze out the water. Mix these things together in a large bowl with 1½ lbs. ground beef and ½ lb. lean ground pork, two eggs, 1 scant tbs. salt and ½ tsp. pepper. Work the mixture well with the hands and shape into neat balls. Brown the meat balls evenly in butter over moderately high heat. Set the meat balls aside and make the gravy in the same pan: Melt 3½ tbs. butter and add to it ½ cup flour to make a roux. Add about three cups of beef stock or consomme and a little red wine or sherry, if desired, stirring the liquid well into the roux to avoid lumps. Add 1 cup cream and salt and pepper to taste. Simmer the gravy for 5 or 10 minutes, then pour it over the meat balls and simmer them for nearly an hour. A cup or so of chopped mushrooms may be added.

Stuffed cabbage made in your favorite manner is also appropriate on the smorgasbord, and so is stroganoff, another item for a chafing dish. More of a contrast with the meat balls, however, would be a baked tongue with a nice sauce. For example:

Baked Tongue

Simmer a corned beef tongue for about two hours in water to cover, with a carrot, an onion, a bay leaf, a stalk of celery and a few peppercorns added. Skin and trim the tongue and return it to the broth until it is tender. Put it in a baking dish with half of the sauce and bake for 45 minutes at 375 degrees. Slice thinly and cover with the rest of the sauce.

SAUCE

Peel and skin 1 cup chestnuts and break them into small pieces. Melt 4 tbs. butter in a saucepan and add 4 tbs. flour to make a roux. Gradually add 1 cup of stock from the tongue, unless it is too salty, in which case use any other kind of mild stock. Allow to simmer about 5 minutes, then add another cup or so of the same stock. Add 3 tbs. brown sugar, 2 tbs. sherry and the chestnuts and let simmer for another five minutes. Use as directed above

Cold pickled cucumbers are invariably found on the smorgasbord.

Pickled Cucumbers

Mix 1 cup sugar and 1½ cups vinegar and a pinch each of salt and pepper. Pour this over two or three cucumbers, grooved with the tines of a fork and sliced. Chill for at least an hour and garnish with lots of finely chopped parsley.

Dessert can be anything you like to make and are able to make well. Cakes of all kinds, meringues, cookies, crepes and spirited fruit sauces, peaches Melba—there are literally thousands of things to have with the coffee. Swedish coffee is made with a raw egg in the grounds, and it is very good. They drink it constantly, not solely with dessert.

The Swedes have a special Christmas drink which is called Glogg. There are innumerable ways of making it, but you may try this:

Glogg

Mix 1 bottle muscatel and 1 bottle claret with 4 whole cloves, 8 cardamoms, ½ cup blanched and shredded almonds and 1½ cups seedless raisins, 2 pieces stick cinnamon and 3 or 4 large slices of candied orange peel, chopped coarsely. Bring this to a boil and store it overnight or longer in a cool place. When ready to serve, heat it up again in a nice kettle for bringing to the table. Put about ten sugar cubes in a tea strainer and moisten them with brandy. Float about 1 cup of brandy on the warm wine mixture. Light the sugar cubes and add them slowly and carefully to the wine, so that the whole business ignites. I dare say there is an appropriate Nordic song for this moment, but I do not happen to know it. Ladle the Glogg into cups when the flames have died down. It is a very warming potation.

God Jul! Skol!

Everest: The Sierra Club's New 'West Side Story'

Everest: The West Ridge, by Thomas F. Hornbein. Photographs from the American Mount Everest Expedition and by its leader, Norman G. Dyhrenfurth. Edited by David Brower. Sierra Club, \$25.

By TOM COLLINS

Almost from the beginning Berkeley was involved in the 1963 American Mount Everest Expedition. William Siri, deputy leader in charge of the scientific program, is a professor of molecular biology. James Lester, the clinical psychologist, had an office on campus, but has since moved to Los Angeles. Gilbert Roberts, the physician, has a medical practice in Berkeley. John Breitenbach, who was killed by a collapsing ice wall shortly after Base Camp was established, had been a graduate student here.

The story of that expedition has been told elsewhere, both as a formal, dramatic story, and as a first person narrative. This account by Thomas Hornbein lacks many of the details and dramatic highlights of other accounts, sometimes almost to the point of causing confusion. For instance, the lack of a map or diagram showing the location of the camps, West Ridge, Hornbein Couloir, South Col, Rongbuk Glacier, and other landmarks, is acutely felt. It is, however, an intensely personal account by the person who pioneered the previously unattempted West Ridge, and who, along with William Unsoeld, on May 22, 1963 first climbed Everest by that route, and who first traversed any Himalayan peak.

In his preface, Hornbein writes that his goal "is to place the drama, the hardship, the toiling up windswept heights into a setting of day-to-day reality, a setting of grubby unbathed liv-

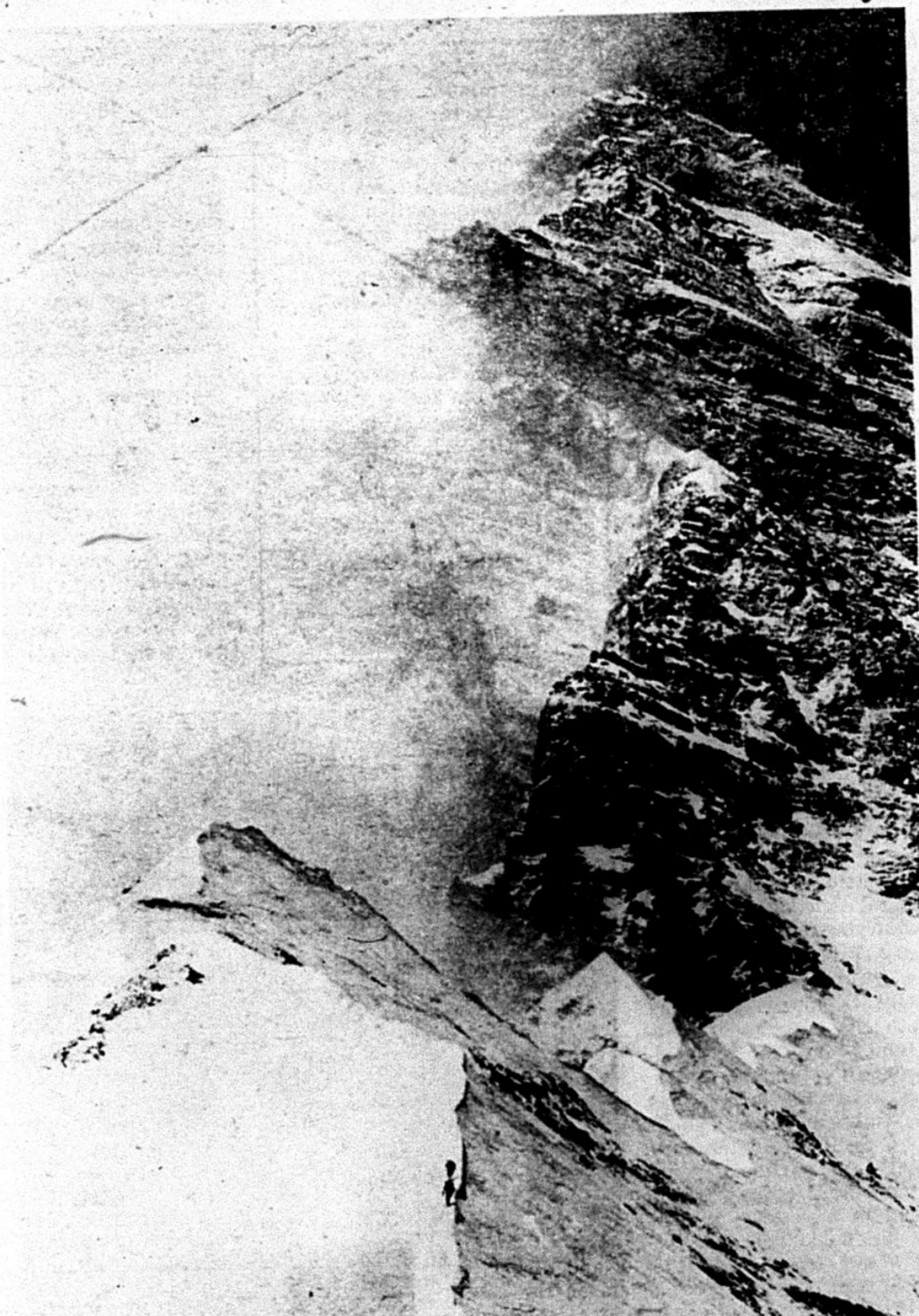
personal glimpses of Hornbein, Barry Bishop, Luther Jerstad, Breitenbach, and others skinny-dipping in the streams along the way to the mountain, skipping stones, and shooting rapids in the altogether. "By lantern light we groped for tea, cocoa water, and Metrecol cookies to plaster peanut butter on," Hornbein writes of one morning's awakening. And there were the psychology tests—every morning the decision whether Everest was masculine or feminine.

Then too, there is the final achievement:

"Ahead the North and South ridges converged to a point. Surely the summit wasn't that near? It must be off behind. Willi stopped. What's he waiting for. I wondered as I moved to join him. With a feeling of disbelief I looked up. Forty feet ahead tattered and whipped by the wind was the flag Jim (Whittaker) had left three weeks before. It was 6:15. The sun's rays sheered horizontally across the summit. We hugged each other as tears welled up, ran down across our oxygen masks, and turned to ice.

"Just a rock, a dome of snow, the deep blue sky, and a hunk of orange painted metal from which a shredded American flag cracked in the wind. Nothing more, except those last few feet to the top of the earth."

This is the twelfth in the Sierra Club's Exhibit Format series. As usual it is in large size, and full of photographs—nearly 90 full-page photographs in this case, all in incredibly beautiful color. Unlike any other book in the series, this one has depended largely on 35 mm color transparencies. The pictures were lithographed on the highly calendared side of Champion Kromekote sheets, single sheet



EVEREST . . . Unsoeld and Hornbein approaching the West Ridge, photographed by Barry Bishop. "These two black specks, scarcely visible among the vast eccentricities of nature, but moving up slowly, intelligently, into regions of unknown striving, remain for us a symbol of the invincibility of the human spirit."



SNOW BANNERS . . . Above Khumbu Icefall. John Breitenbach was killed by a collapsing ice wall here March 23, 1965. Photo by Thomas Hornbein.

ing, of hours of sweaty boredom and moments of fun or aloneness for introspection, a setting where men are human beings, nothing more . . . and nothing less."

Hornbein's account is emotionally charged, not because he emphasized excitement and danger, but because he minimized them. His story is not of heroes but of men. "One must conquer, achieve, get to the top; one must know the end to be convinced that one can win the end—to know there's no dream that mustn't be dared. . . . Have we vanquished an enemy? None but ourselves," wrote George Mallory, most famous of Everest's early explorers. This is Hornbein's story.

Surprisingly, perhaps, explorers are people too. There are

collated, and bound in Columbia Mills' Sampson linen. Accordingly, it is a book of extraordinary beauty.

One of the problems with the process that troubled David Brower when he was putting the book together was the requirement that there must be at least one page of text for each page of illustration. In order to get in all the pictures they wanted it was therefore necessary to pad the book in several places. The opening credits, list of photographs, chronology, contents, and other paraphernalia are placed around these pictures. In addition, there are several interludes paved with relevant quotations sent in by Sierra Club members in response to a request for "paragraphs to be turned on by"

for use in the book.

The value of the format is that one is forced to read slowly, digesting the content along with the pictures. This produces a kind of enforced introspection, which results in a greater understanding and appreciation of the idea of mountain climbing as adventure, and as art.

The Sierra Club is known primarily for its conservation work. As this book went to press, the Club was actively engaged in trying to save the Grand Canyon from being dammed by the Bu-

reau of Reclamation, the last redwoods outside of a national park from being logged by private industry, and the Northern Cascades from suffering the same fate at the hands of the Forest Service. And there is Bay-fill, PG&E, the Corps of Engineers' threat to Alaskan wildlife, Consolidated Edison's attack on Storm King Mountain, and so on.

Unlike some of the club's previous books there is no purpose behind Hornbein's West Side Story except the thought,

"it is all right to enjoy mountains from time to time as well as worry about what's happening to them."

"We would help them enjoy Everest so long as they would share the worrying in their odd moments," Brower writes in his foreword. "That is part of the price of this book."

Tom Collins, a sophomore in English and Drama, is a Daily Californian staff member. His entertainment column, "Program Notes," appears each Friday.



POOL . . . in glacier at Base Camp. "The temperature of the water offered a Spartan challenge. . . . But the sun was warm and the pool inviting. Photo by James Lester.

Students Evaluate New Catalog for the Quarter System

By ALICE SINGER

Two weeks ago President Kerr reiterated the University's stand on conversion to the quarter system. The change from semesters to quarters will occur next September — despite protests from students and faculty that there has been insufficient time to prepare for the change.

A small amount of time still remains before the final changes will have been made in the General Catalog for 1966-67. As the Honor Students Society survey of student opinion suggests, the provisional copy of the General Catalog, which represents current planning for the conversion, indicates that the response to the opportunities for educational improvement has been highly varied.

REQUIRED COURSES

First of all, the number of courses required for or prerequisite to the major poses both mechanical and substantial problems. Many of these problems existed before the quarter system and have been indifferently incorporated into the new program. Although students in the sciences and humanities foresee little change in their major programs, a number of social sciences (including psychology, anthropology, and political science) have reduced requirements.

A psychology major commented: "The new requirements will force the student to know something about both the experimental-biological issues and the clinical-social issues in psychology today. Nowadays, when the layman has so many misconceptions about what goes on in contemporary psychology, it is particularly necessary that the average student be exposed to a variety of concerns in the field. The new requirements are looser than the old, but just as effective in providing a broad framework with less confusion."

Satisfaction with present and future major requirements was not universal. An anthropology major wrote, "Department requirements are justifiable only in some cases . . . the justification usually depends on the professor who gives it. I like the choice-of-one-course-from-each-group type requirements. The only exception is 142A (Comparative Society). Unless it is changed drastically, this required course is a waste of time, especially for those not planning to continue in anthropology."

Many students concurred with the psychology major who wrote that Psychology 1A was not a necessary prerequisite for "any upper division psychology course I have ever taken."

An anthropology major hoped to have Anthropology 2 and 3 "a little more intelligently presented than 2A and 2B were in the past." Moreover, improvement of lower division introductions may help raise the level of the upper division classes to which they are prerequisite.

FEWER COURSES?

In addition to the problem of specific arrangement of major requirements, students have expressed much concern over the general allocation of course work. An overwhelming majority of the students sampled expressed a preference for three five-unit courses per quarter rather than four four-unit courses — particularly in the social sciences, where this opinion was held unanimously.

A questionnaire on the quarter system, returned by 40 students, was the basis for this condensed report. The length and detail of their answers to the questions provides at least partial compensation for the relatively small number of questionnaires. Further information was solicited in discussions with many individuals and groups.

The survey is a project of the Honor Students Society committee on the quarter system, a subcommittee of the HSS committee on education. Those who helped with the report were subcommittee chairman Vivian Hara, assistant Don Hunt, and Raymond Alpert, David Fahle, Dan Heyman, Camille Holser, Regina Janes, David Overstreet, Con Slobodchikoff, and Dan Weiner.

all courses be either four or five units to equalize work loads. Intensive upper division survey classes, lab courses, and small seminars (such as French 101 and 102, English 100 and 151, and psychology 150 and 160) frequently seem to cover too much material to fit into one quarter, even with high unit value.

Those students who preferred four courses per quarter generally gave reasons like these. "I believe that it is easier to comprehend the material . . . In addition, it allows faster completion of prerequisites to . . . U.D. courses . . . In addition, taking more courses at once gives one a broader outlook and may allow a wider synthesis of knowledge. Exams, papers, lectures, etc., may come more often but the reduced material will make it easier to study." The two most frequent concerns were time to absorb material and

breadth, history and institutions, language, and English — leaving little room for electives above the level of unsatisfactory and unsatisfying introductory survey courses, courses which teach "practically nothing about practically everything," particularly to major students.

HORIZONTAL & VERTICAL

To remedy this situation the Honor Student Society Committee on Education has suggested that a distinction be made between two types of courses: an integrated, "horizontal" survey course such as Social Science 1A-B, which would not be prerequisite to anything but would give a student a general idea of the content of a particular field; and a "vertical" sequence designed to pursue a specific topic in greater depth.

Both types of courses would fulfill breadth requirements.

Under this plan courses serving little or no educational value, such as Psychology 1A, Botany 10 or Physics 10, could be eliminated, leaving the faculty free to teach non-technical courses concerning what a discipline is about and what that means to the layman, instead of trying to cram four to eight years of intensive study and many lifetimes of research into a quarter.

INTER-DEPARTMENT COURSES

An engineering student has noted the reluctance of faculty members to teach on a non-technical level. Nevertheless, that a course is non-technical need not mean that it must be on a juvenile level, as some teachers may think. The interdepartmental nature of these classes would prevent some repetition of general introductory material so that lectures could be fairly sophisticated. Coupled with a distinction be-

tween "horizontal" and "vertical" course sequences, the Honor Student Society Committee recommends an expanded program of subject (but not necessarily unit) credit by examination, which would also satisfy requirements on all levels. A student who can satisfy breadth requirements or prerequisites by examination would be free to take more advanced work in fields of interest or more courses in diverse fields, thereby "electing" to obtain more breadth or more depth, according to his own preference.

INDEPENDENCE

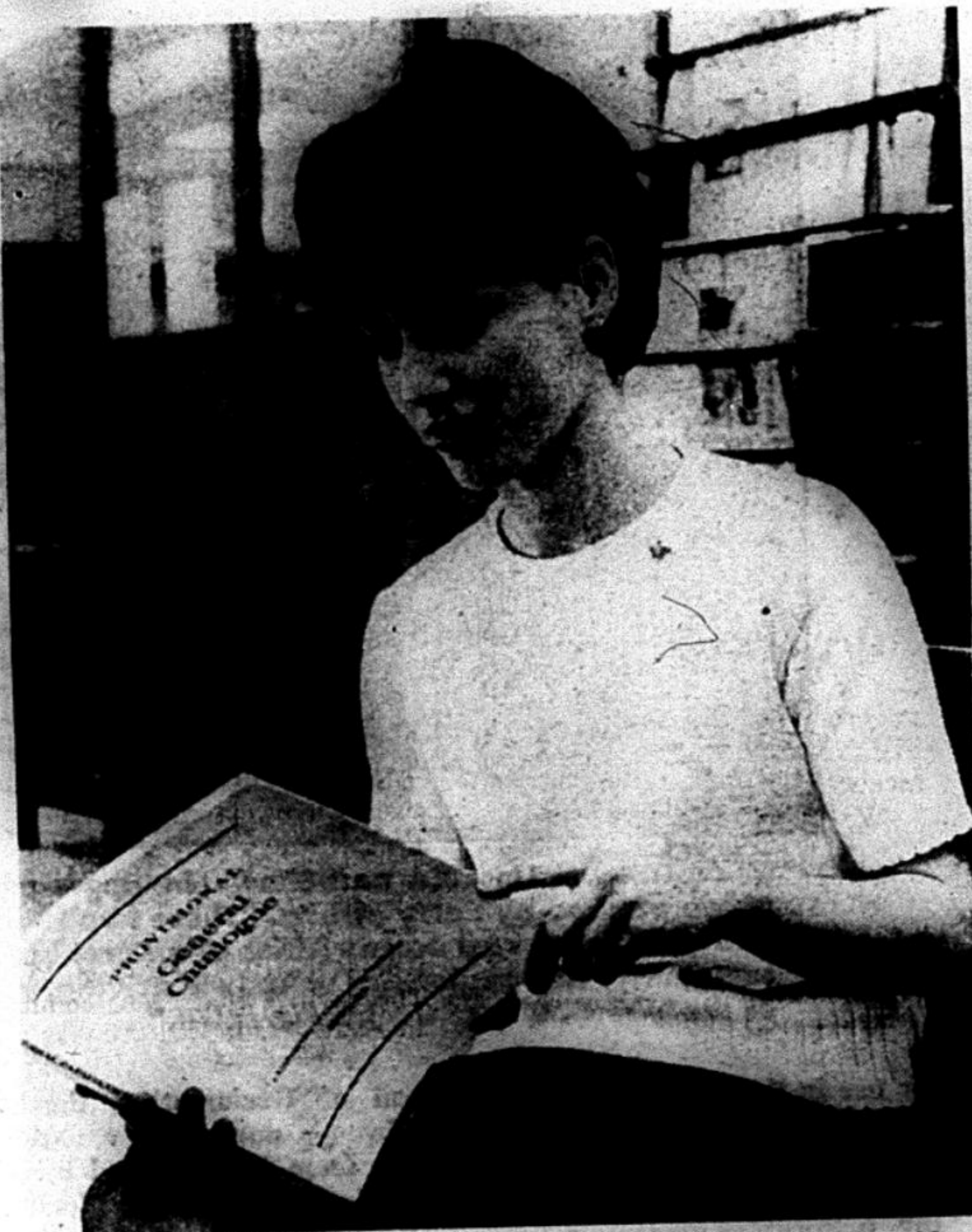
Flexibility and breadth can also be increased by an expanded independent reading plan similar to the 199 program but greatly en-

IN OUR NEXT ISSUE

As final exams approach, the Weekly Magazine will devote most of its next issue (January 4) to an important report on the grading system. It will be the last issue of the semester.

larged in scope both "horizontally" and "vertically." Dartmouth College, which changed to a three-term (equivalent to three-quarter) program precisely to reduce the load from five to three courses, requires a general independent reading program to increase "sampling of disciplines" and "help offset the loss of electives" as well as to "increase rather than diminish the appeal of reading as a legitimate activity of the college student," according to the Dartmouth Magazine of April, 1957.

Alice Singer, a senior in anthropology, is chairman of the Honor Students Society committee on education.



—Photo by RICHARD VAUBEL

"I do not envision much difficulty or change for myself, but others who do not look into the changes adequately may indeed encounter considerable difficulty. God help them." (Comment by undergraduate in biochemistry).

ference for three five-unit courses per quarter rather than four four-unit courses — particularly in the social sciences, where this opinion was held unanimously.

The reasons most commonly given for this preference were reduction in the time spent in mechanical activities such as registration, dead week, and exams, less repetition of introductory material, greater continuity of presentation, better opportunity to become acquainted with professors, the enormous time and energy required for many reading classes regardless of unit value, and larger blocks of time available for research and working.

A criminology student wrote, "I prefer few but intensive courses. Many courses on the same general topic increases chances of boring repetition and a confusing array of professors. Much time is now wasted over trivia. Intensive study motivates me much more . . . Also more class rapport develops when classes meet often."

A Spanish major who prefers three intensive courses wrote that "I enjoyed the courses the most in which I did a great deal of research and/or analysis myself, with lectures intended only as background material."

EQUALIZING LOADS

On the other hand, a number of students with majors requiring courses in several departments, although preferring the principle of fewer classes, suggested that

opportunity for breadth as well as depth in studies.

SUMMER SESSIONS

Enough courses must be given during the summer to make attendance worthwhile. Students have the impression that the first summer quarter will offer fewer courses than previous summer sessions. In addition, no courses should be offered only during the summer, since many students need to work at that time.

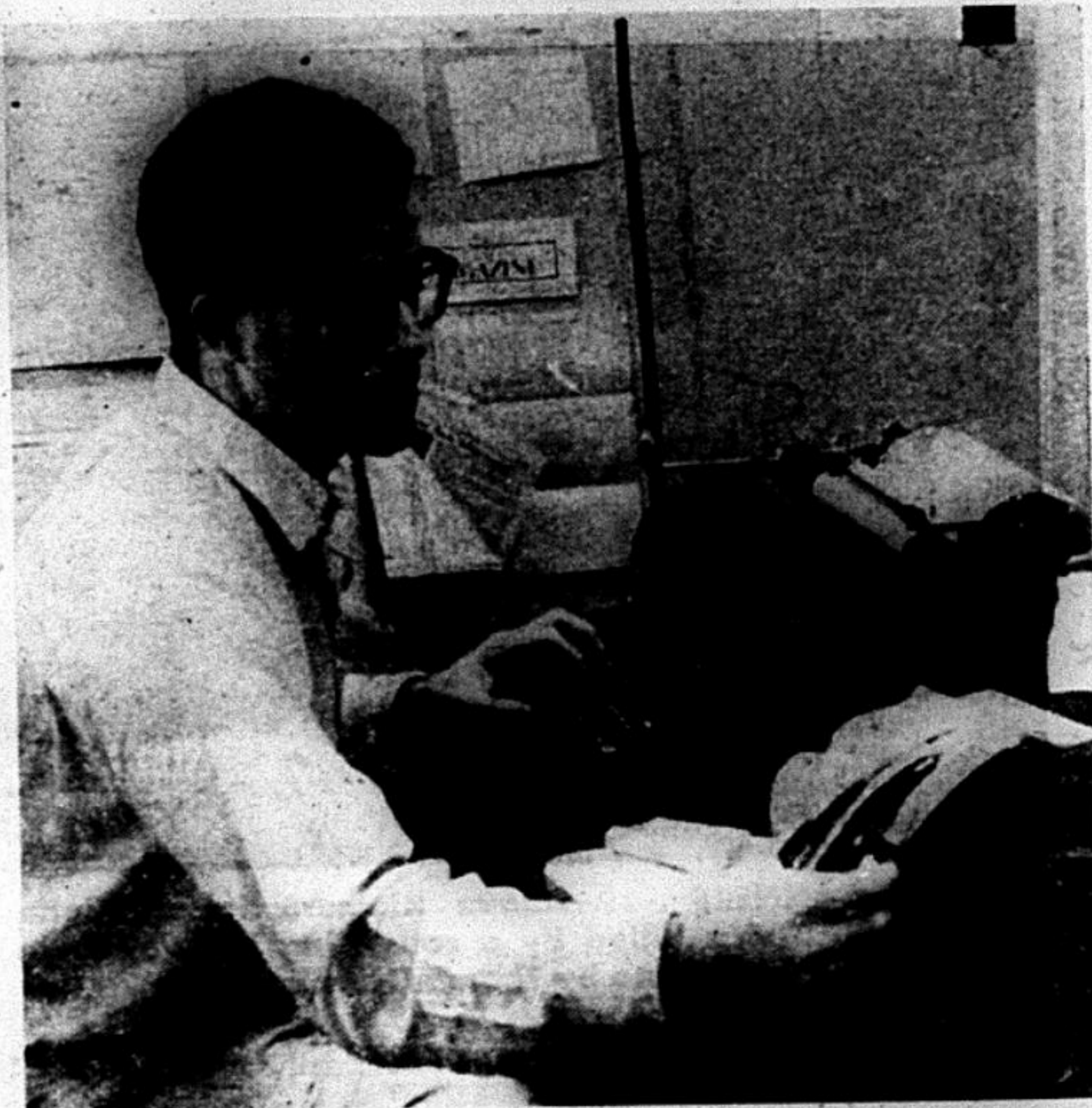
Therefore, when the demand warrants it and facilities are available, courses should be offered at least two quarters a year to provide the greatest possible flexibility in programming. This is especially important for sequence courses in which a year's progress may be lost by a student entering after the first quarter or by a student with a scheduling conflict.

DEPTH vs. BREADTH

Many students argue that they can learn better with fewer courses per quarter. Since a three-course-per-quarter system (each course averaging five units) would require an average of thirty-six courses for graduation, students would obviously take courses in a smaller number of subjects. Nevertheless, with a slight adjustment of the proposed system, a serious student need not have to specialize only at the expense of a well-rounded education.

Under the present system much of the student's time is spent filling requirements — for a major,

FAREWELL



—Photo by RICHARD VAUBEL

REED STRAUS, Graduate Student in Philosophy

He walked into the green-curtained Editor's office one sunny autumn afternoon. It was his first week in Berkeley. The Weekly Magazine was about to be born. He volunteered, and we accepted—and he became the Associate Editor.

A week ago he left for New York, to return to his graduate work and exams at Columbia, thus depriving the Weekly Magazine of its Associate Editor.

But his departure, far from weakening the Weekly Magazine, makes it nationwide. He is now Executive Director of our Eastern Offices, and will handle letters and contributions from members of the University community who happen to be in New York, as well as contributing articles on his own. The address is 540A West 113th St., New York 10025.

Our loss is our gain.

But we'll miss you, Reed Straus.

The Daily Californian

WEEKLY MAGAZINE

Published Tuesdays by the Daily Californian. Temporary office, 606 Eshleman Hall.

Allan Metcalf, Magazine editor
Assistant editors: Gloria Kaiz, Martin Weis.

Editorial Assistant: Teri Flynn.
Book reviews: Anne Marie Ferraris, Lynn Vernik.

Cuisine: Ann Whipple.

Contributing editors: Alison Schoenfeld, Ralph Maltes.

Eastern offices: 540A East 113th St., New York 10025.
Reed Straus, executive.

Copy deadline, eleven days before issue.

LETTERS

Gentlemen:

The articles "Universities, Social Sciences and Military Research" by Messrs. Briemberg, Makolsky and Shechner on Nov. 23 and Dec. 7 cannot be allowed to stand without some comment. For if these articles reflect the state of mind of any substantial portion of the campus community it would be a most distressing symptom. But it would be an even more distressing sign if they failed totally to elicit a reply.

This is not so much because of the name-calling ("paranoic," "machinators," "the gown is used as a cloak for the dagger," "academic espionage," etc.), although in the interests of a continued dialogue between faculty and students someone should have applied a red pencil to these invectives. What is even more alarming is the Manichean mode of reasoning and the cavalier attitude toward evidence. . . . These articles . . . are a wholesale indictment of the University, and indeed of American intellectuals generally, as constituting a kind of "military-academic" complex which is guilty of betraying every value of the intellect and of conscience and of living in voluntary bondage to "the forces of annihilation." And this indictment is founded on the primitive assumptions that any contact with American governmental institutions or policies is ipso facto immoral, and 2) that any profession of anti-communism by an intellectual is automatically a betrayal of freedom. Yet from what logic does it follow that American military forces, any more than those of other states, automatically equal annihilation; or that a dim view of communists' devotion to liberty inevitably implies reaction and treason to the intellectual calling?

The articles' use of factual evidence is open to similar question. A few very vaguely described instances of professorial contact with government are mentioned and the impression is conveyed that the University as a whole is a factory of death. The authors of the articles seem to forget that the integrity of the University depends, among other things, on the observance of certain canons of logic and proof and on certain ethics of controversy. . . .

To turn to the vexed question per se of the relation of the University to government, since this seems to be one of the topics that is most difficult to discuss rationally at the present time on this campus. To be sure, no moral or reasonable person can fail to wish for the elimination of violence from international life, and many of us work for that goal as best we can. If the goal were reached, armies and much of power politics would be obsolete. But this goal has not been reached. Not only are there violent struggles between defenders and attackers of vested interest in many countries, struggles which occasionally spill over into international politics, thereby making it inevitable that other governments, including our own, must take some stand. There is also international action by adherents of a social system of a totalitarian kind who are convinced that they have a mission to spread that system, especially through "wars of liberation," and that this end justifies the large-scale use of violence for its realization.

In this situation, concerned individuals in the United States can take two different attitudes. Some will be non-resisters, either from a personal desire to express their faith or from a belief that violence eventually exhausts itself. Others, however (we would assume a majority of the Berkeley faculty) feel that to stop violence, counter-violence is justified.

The latter position, of course, does not mean support for all actions of counter-violence by the U.S. government. Most of the Berkeley faculty, we are sure, would refuse to support biological warfare or would be very selective about assisting projects of the CIA. Still, many of the faculty sincerely and conscientiously feel that, as the world is today, American power is necessary over-all for human freedom and welfare; when that power is misused, they prefer to fight the misuse rather than to discredit or destroy the power. At the same time, they are prepared to respect and defend the rights of non-resisters or of opponents of U.S. policy who follow their convictions; but they also claim for the position of association with the government a similar moral legitimacy, founded on the right of individual choice in determining one's politics. As long as we have not succeeded in building a peaceful world, it is either nonsense or hypocrisy to treat our military and political leaders as butchers and those academics who associate with them as accessories to a crime.

To be sure, such association poses its problems. We are all well aware that power can easily corrupt. Yet, on the other hand, total and alienated withdrawal of academics from all contact with state power could have unfavorable consequences for society of another kind. For state power will remain, whether we like it or not. The real problem is not how to negate it, but how to promote its enlightened use. So long as there is free—and reasoned—debate within the University on this subject, there is good hope of preventing those corruptions that power can bring. And such a debate presupposes that academics of all political persuasions must be free from personal vilification.

Thus the most objectionable feature of the articles in question is the insinuation that professors who work on government projects are corrupted by the hope of personal advancement. . . . some social scientists seek contact with military institutions, projects and funds in order to carve a private province of specialization. They then use this domain to command intellectual recognition within the university. . . . The new savant, like the nouveau riche, craves recognition." The only shred of evidence offered for this blanket assertion is the case of an unnamed Michigan State professor who, according to his interviewer Robert Scheer, said that he took a government job in Vietnam primarily to advance his own career.

Later in the article the names of more than a dozen Berkeley professors are mentioned as having had contact with the military. However, nothing is said to suggest that these professors may have had very different motives from those which the Michigan professor reportedly attributed to himself. Quite certainly, many readers will succumb to the implied suggestion that the Berkeley professors named are no more than self-seekers, who have betrayed all moral and professional values for the sake of personal advancement. This portion of the articles is simply McCarthyism in reverse.

Sincerely yours,

CARL LANDAUER, Professor of Economics
MARTIN MALIA, Professor of History

Gentlemen:

Congratulations to Lynn Vernik and Reed Straus for having seen through Antonioni in their splendidly critical review. And why not too Alain Resnais? There is all too much trifling with the moviegoer's mind in the work of these two: too much suggestion of depths that could never occur to them; too much form and formal trick to cover a real lack of content. The result is, that instead of being frankly branded as fraudulent and inadequate, they make the sensitive and intelligent moviegoer feel that he himself is shallow and stupid. Let us then have more of this quality of highly cognitive criticism.

Sincerely yours,

ERNEST BECKER, Lecturer in Social Psychology

Gentlemen:

Hopefully Miss Vernik and Mr. Straus will have an opportunity to see The Red Desert before it leaves the Cinema. A rolling mind gathers no Antonioni!

Sincerely yours,

R. F. DWYER, Freshman, Letters & Science

(For further commentary on the Antonioni review, see the letter on p. 13.)

Public Power?

Reddy Kilowatt Costs Just a Little More

(Continued from page 7)
er wholesale from PG&E at the high PG&E rate, 7.25 mills per kwh as compared to 4.33 mills per kwh for CVP power.

A spokesman for BART has stated that with public power his agency hoped to save one third of its estimated \$3,000,000 yearly PG&E power cost, or \$10,000,000 in the first decade of operation.

The financial success of BART depends on a source of cheap power. Electricity for this new "co-op" would come from the state operated generators at the Oroville dam, the Hetch-Hetchy turbines and a new steam plant in the Delta at the north-east corner of San Francisco Bay.

AGENCIES BACK OUT

After expressing strong interest in the co-operative project, one agency has suddenly reversed itself. James K. Carr, Manager of the San Francisco Public Utilities Commission and brother of PG&E vice-president Francis Carr, on November 23, less than one week after voicing support for the project, recommended against San Francisco joining in such a co-operative venture. The plan, said Carr, was "unrealistic." The San Francisco PUC then voted unanimously against the planned study.

Why is it that these public agencies are staging a minor revolt against PG&E? An examination of the prices charged to PG&E customers provides some interesting answers. Having insinuated itself between Tracy and the Berkeley campus, PG&E is in the position to charge the University, in the next ten years, at least \$20,000,000 more than the University would have to pay were they receiving public power from the Central Valley Project. This is four times the price of constructing new lines from Tracy to Berkeley at today's advanced prices. With a monopoly on transport lines across the Bay, PG&E is able to "hold up" the city of San Francisco for hundreds of thousands of dollars annually for transporting electricity the city itself has generated.

ROBBER BARON

Thus, like a robber baron, does the company employ its strategic location to exact tribute from its customers. Little wonder, then, that cities receiving PG&E power often go through costly litigation over many months, and in some cases, many years, to release themselves from this monopoly's bondage.

Santa Clara requested, and received, 75 megawatts of Central Valley Project power in 1964. It took them sixteen additional months to finally receive a ruling from Secretary Udall that PG&E must wheel the power to them, their previous commitment to PG&E notwithstanding. Yet Santa Clara's contract with PG&E included a "release clause" which allowed Santa Clara to cancel the contract at any time. Hence the delay was entirely the fault of PG&E; they can well afford to pay for the litigation, since their customers, you and me, pay for it through our utility bills. And the longer the delay, the longer PG&E can charge its high rates.

Communities that have successfully escaped to public power have shown dramatic decreases in their utility bills. The Davis campus is an example. Writes the Blade-Tribune:

"In February, 1965, the Davis campus paid the government 4.932 mills per kilowatt hour for its electricity. Had the University continued with PG&E service, the cost would have been 9.954 mills per kwh. Thus the cost of electricity at Davis has been more than cut in half. These figures . . . by E. K. Crouch, the University's engineer for planning and construction."

Palo Alto switched to CVP power

er two years ago, and has saved about \$2,000,000 annually on its electric bills. That is enough to put it well on its way to undergrounding all of its utility lines, and still give the city a tax rate of 80 cents per \$100 of assessed valuation, the lowest in the Bay Area. They have done all this while maintaining power rates well below those that PG&E charges surrounding communities.

out a struggle. The city of Sacramento, with the Sacramento Bee on its side, fought for over twenty years to create its own municipal utilities district. The new Bay Area co-op, with its original participants, BART, the University, San Francisco and Santa Clara, would probably involve an immediate annual loss in excess of \$5,000,000 to PG&E.

Despite the difficulty, the Uni-



—Courtesy of State Dept. of Water Resources

OROVILLE DAM, when completed in 1968, will look like this—the highest earthfill dam in the world. The State-built dam is on the Feather River. By March 1969 the power plants at Oroville and nearby Thermalito will be generating about 710,000 kilowatts of public power.

There is no distinction, other than cheap electric power, to differentiate Palo Alto from many other like-sized Bay Area communities with much higher tax rates.

Sacramento, after putting up a twenty-five year fight to buy out PG&E, now has one of the lowest electric rates in the state. Santa Clara will save at least \$1,000,000 annually by getting its power from the CVP instead of PG&E. The savings that these communities have made will grow as their consumption of electricity grows. None wishes to return to PG&E.

In answer to these figures PG&E argues that, as a privately owned utility, its rates reflect city taxes which municipally-owned power systems needn't pay. Yet many of the city-owned utilities do charge themselves a tax, usually in the form of a tax-equivalent that goes into the city's general fund. Palo Alto's municipal power district allocated \$266,358 into the Palo Alto general fund in lieu of taxes this year. This is more than the \$187,921.22 that PG&E paid Berkeley, a larger community, in taxes for the 1964-65 fiscal year (Blade Tribune, October 24, 1965).

The city of Berkeley is presently considering a study aimed at buying out PG&E's distribution system. The move is being watched closely by other California cities, since most of them have a charter provision enabling them to acquire the electric distribution system within the city when they so desire. Forty-one communities in California own their own distribution systems, and use the profits for the cities themselves.

On December 7 the Berkeley City Manager told the City Council that they would be "remiss" if they did not go ahead with a \$15,000 study of the feasibility of acquiring the city's electrical distribution system from PG&E. The Council will act on the City Manager's report on January 4.

Should Berkeley acquire PG&E's distribution facilities, no legal obstacle would remain to obtaining public power for the campus. The campus would no longer be located within a municipality served by PG&E at retail rates.

How long, Oh Lord?

No customer, large or small, gets out from under PG&E with-

versity should continue its search for public power. The major, indeed, the only argument PG&E has against wheeling CVP power to the Berkeley campus is the clause in the 1951 contract which prevents the Bureau of Reclamation from supplying power to areas served by PG&E at retail.

Yet there is nothing to indicate that the contract was ever subject to approval by the Interior Department in Washington. And recently the Department has overriden similar objections, and ordered PG&E to wheel previously committed CVP public power to the city of Santa Clara.

In a memorandum dated October 22, 1965, Frank J. Barry, Solicitor for the Department of the Interior, stated that, "The existence of the dispute (between PG&E and Santa Clara) does not relieve the Secretary of his responsibility to provide electric service to a customer that meets all the requirements of the law."

SUBSIDY FOR PG&E?

Beyond this there is the question of why the University should continue to subsidize a privately owned utility, much of whose stock is owned by large holding companies and insurance corporations located in the East, who use none of the power and are interested wholly in what they can get out of the California consumers. There is the question of why a public utility, which is both a natural monopoly and the world's largest privately-owned utility, should be privately owned at all—any more than the highways or post office.

And there is the basic question for the University of whether we shall continue to contemplate a tuition on University education, or whether we shall instead employ all of the means at our disposal to secure the revenue to preserve free higher education in California. The alternative, education for those who can pay, is a blow at democracy itself.

Edward Hayes, a graduate student in the Department of Political Science, is president of the Free University, an independent campus research and lecture forum. Michael Haley is a member of the executive committee of the California Power Users Association.

The Daily Californian

EDITORIAL PAGE

Page Twelve

Tuesday, December 14, 1965

DAILY CAL PHONE NUMBER... 848-4800

Editorial... ext. 3932

Classified Ads... ext. 3941

Managerial and Display Ads... ext. 3937

The Rules Committee

With yesterday's announcement of the faculty and administration representatives to the Campus Rules Committee, this campus has taken another step towards Chancellor Roger Heyns' concept of an autonomous University community. Now students will have a very definite voice, even if no actual power, in determining student rules.

This semester is almost over, and the effectiveness of the committee probably cannot be judged until the end of the current academic year. But even at these early meetings certain guidelines as to procedure and substance ought to be followed.

First and foremost, the committee should devise a system of rules solely for the benefit of the entire University community. Rules written to serve other functions, such as mitigating outside criticism, are harmful. To the purpose of serving the University community, rules should be flexible. It is the spirit, rather than the letter, of rules or any law which is important.

Another important consideration is the attitude of the committee members both towards their job and their colleagues. Committee meetings will accomplish nothing if debate predominates over discussion, if every petty point is argued again and again, and if members form factions and refuse to see another viewpoint. If committee members will haggle over the wattage of amplifiers to be used in the Sproul Hall area, if they visualize other committee members as continually conspiring to crush those principles which they staunchly defend, then the committee will lose the respect of the administration, the faculty, and the students.

The school has suffered greatly to establish some of those principles from which the rules committee was formed. It would be inexcusable for the committee to degenerate into pettiness and infighting. For the sake of the University community, we hope it will not.

Financial Coercion

In its meeting yesterday, the ASUC Finance Committee recommended \$120 be given to the Constitutional Convention to help pay expenses. But the committee added a restricting clause to this recommendation. It stipulated that the Convention make its ratification procedure the same as provided in the ASUC Constitution for approving amendments.

This issue of ratification should not be decided by a clause tacked onto an appropriation motion. The issue ought to be considered separately by the Senate.

The Constitutional Convention needs money. It is unfair to ask the delegates to spend their own money when they are already expending much time and effort to the Convention.

We resent the attempt by the Finance Committee to determine the ratification procedure by such a coercive method. We urge the Senate to grant the Convention the needed funds for expenses and then consider the issue of ratification separately. Ratification is an extremely important matter and should not be decided by such a procedure.

THE DAILY CALIFORNIAN

Peggy Krause, editor; Jim Branson, managing editor; John F. Oppedahl, city editor; Barry Bishin, assistant managing editor; Lawrence Gartner, assistant city editor; Konstantin Berlandt, feature editor; John Rodgers, sports editor; Chris Shores, business manager; Ken Luk, advertising manager; Tomas Zierer, production manager; Drew Schutz, promotions manager.

NIGHT EDITOR
DAVE NEWMAN

NIGHT MANAGER
DENNIS SOLOMON

Editorials represent the opinions of the Daily Californian, not necessarily those of the University or student body.

Letters to the Ice Box

Russian History

To the Ice Box:

Re: Mr. William Mandel's article in the Tuesday, Dec. 7 Daily Cal: Deeply sympathetic as we are to both the personal and political dilemmas of sensitive "left" intellectuals such as Mr. Mandel in contemporary American society we must profoundly disagree with his characterization of the senior Russian History faculty and his analysis of the type of scholarship engaged in by their students at Berkeley.

Doors have indeed been cruelly closed to Mr. Mandel for political reasons. And the results of McCarthyism were "catastrophic not only for U.S. foreign policy but for scholarship" (p. 10, D.C. Dec. 7). But it is totally unwarranted to imply that the senior Russian History faculty is tainted by McCarthyism because "their views made them acceptable during the wild anti-Sovietism of the McCarthy era" (Ibid.10).

It demeans Mr. Mandel's very legitimate intellectual stature to indulge himself in such petty personal vilification. Moreover, we, like Mr. Mandel, also wish to live rather than "grapple with the U.S.S.R." (Ibid., 10), and we have found no evidence of a contrary sentiment in History No. 136A, the course covering the period 1890-1953. If there are seminars in cold war scholarship they are not being conducted by the present Russian History faculty which has, on the contrary, encouraged a diversity of interpretations, in the best, excuse the word, Liberal tradition.

N. Pereira
Richard Rosen
James W. Marquis
Graduates, History

Poor Quality

To the Ice Box:

Your article of Friday, Dec. 10 concerning candidates campaigning for office was another example of the poor quality of reporting so predominant in the Daily Californian.

Not only was it of rather questionable importance for a front page article, but it also gave inaccurate information. Having lived in a dorm for one year, I am amazed at the respect and consideration sororities give to speakers. Questions are frequently asked of the candidate, and after he has left the girls often discuss the candidate's qualifications and his capabilities for the office.

Any inattention given the candidates just may be due to their inept speeches which are given in a monotone from the far corner of the dining room. Frequently the candidates themselves seem uninterested in what they have to say, generating about as much enthusiasm as milk toast.

—Kathi Davis
—Paula Bacher
—Chris Bakarian
—Mary Louise Swift

Societal Neuroses

To the Ice Box:

It is with hopeless resignation that other motorcyclists and I view the recent legislation regarding "scooter squeezing." Admittedly, most of us are guilty of having caused anxiety to car driving citizens of Berkeley, by parking free on their nickel, or parking such that they have to turn the wheel a few extra times to get out of a parking space. Hence, another of the freedoms which motorcyclists cherish has been taken away.

A motorcyclist makes a trade with the world. He surrenders comfort and safety for one of the few remaining manifestations of freedom. He gets badly hurt in minor accidents, he freezes when it is cold, and he walks when it rains. In return for this, he has the wind in his face, he moves when traffic stalls, and he saves on gas. He used to have no parking problem. Now he is eligible for another of the societal neuroses which afflict his brethren on four wheels.

—Jim Brock
Senior, Bus. Adm.

WAY OUT WHERE

An Open Letter

—leymour samuel davis

Welcome to the club, Bobby. You've finally arrived, and I stretch out my arms to pull you in amongst us. No more the freewheeling Dylan with hands in pockets, coming toward us on an album cover with innocence right beside him. No more angry Dylan frowning at us from a grey album cover with dungaree work shirt and angry determination. The serpent has finally gotten to you, too, eh, friend? Coiling around you with its slimy body and destroying those pretty illusions!

Well, don't take it too hard. It was bound to happen. Anyone who can look around himself and observe what this country is about must catch on sooner or later. And it doesn't even pay to be bitter.

Oh, it's not that I didn't know what was going through your mind. A new born babe opened his eyes and spun the words of what he saw around him. "With God on Our Side,"—the hypocrisy of a country's history. "Blowin' in the Wind,"—the futility and endlessness of war. "The Times They are a Changin',"—the theme of a hopeless generation that rebelled against the injustices they saw around them. You said it all, man, and there were many others like you.

You said other stuff, too. You sang about heartbreak. You talked about beauty around us. You told us about loneliness. "Spanish Boots of Spanish Leather," "Girl from the North Country," "Don't Think Twice." Yeah! Well, I guess we all believed in love somewhere along the way. We all thought love was salvation.

"I gave her my heart, but she wanted my soul

Don't think twice, it's all right."

And down the road you came.

I first know it when you picked up the electric guitar last year. Martins may be nice for the Smithstonian, but if you want the truth of today, man, electric rock is the only tranquilizer. I'm glad you're finally with us.

OK. Maybe you were right. You look around the world and what do you see. Sickness, hypocrisy, dirt, and just plain ugliness. So what do you do? You try to better the things on the outside and build your world on the inside. So, thanks for trying, but now you know like I know that it just doesn't work.

Cause somewhere along the way, you notice that hypocrisy, shame, and selfishness stays around no matter what you try to do. And the ideals and truths of your own life are knifed and butchered by those around you until a bleeding carcass is all that remains of former dreams.

So welcome to reality, Bobby, and serenade us with another twang from your electric amp. So what if what you say isn't what I hear. Don't let communication be your hang-up. I just keep listening 'cause I get a kick out of you. And you just keep writing as long as you don't have anything better to do. Write about V.D. and egotists, Queen Jane and good highs. Write about Juarez or St. Annie, or a man named Mr. Jones. That's all fine. But listen, can I ask you something? Don't end the kicks on a 12 minute "Desolation Row." My insides are balanced too narrow for that. And so is that of everyone else around me, including you. Don't send us all off the edge by telling us where we really are. Stay hip... please.

LETTERS

The Daily Californian welcomes letters for its "Letters to the Ice Box" section.

Letters submitted in person to a member of the Daily Californian staff in 600 Eshleman Hall will receive precedence over letters submitted by mail.

Letters should be typewritten, double-spaced. We reserve the right to shorten any letters longer than 20 lines.

review

Glee Club— Treble Clef Stage Concert

By DANIEL COREN

Anyone who attended last spring's joint concert by Glee Club and Treble Clef was fully justified in coming to last Saturday's program with the greatest expectations. But even the most optimistic member of the audience could not have anticipated the sort of performance which conductor James Fankhauser produced.

Whether the choruses were singing Jakob Handl's "O Magnum Mysterium" or Holst's arrangement of "Lullay My Liking," their pronunciation was clear, their intonation impeccable, and their rhythm both precise and flexible. One learns to expect such things from Mr. Fankhauser.

One also expects Glee Club and Treble Clef to do lighter music, such as the second half of Saturday's concert, better than anyone else, and nobody could have been disappointed in this respect. The folk-song arrangements, the Christmas music, were all a constant source of delight. Everyone knows that the Senior Men's Octet is the best 7-man octet in existence; every one knows that what the Jade Singers do, nobody else does better.

But nobody could have been quite prepared for the brilliant programming on the first half of the concert. The composers' names alone would make many choral conductors hesitate; Mr. Fankhauser chose pieces by C.P.E. Bach, Monteverdi, Schutz, Schubert, Mendelssohn, Morales, Victoria, Jakob Handl, and Giovanni Gabrieli. Admittedly, some of the pieces sounded better than others; Monteverdi's "Hodie Christus Natus Est" and Schutz's "Ich bin die Auferstehung" both failed to get off the ground. But perhaps this seemed so only because every other piece on the first half of the program was on a level which few choruses can sustain for as long as a few seconds, let alone for more than half an hour. The opening chorus of C.P.E. Bach's "Magnificat" is a fine curtain-raiser; the opening choral entrance here was the sort of sound one remembers for a long time with great pleasure.

The pieces done by Glee Club and Treble Clef individually were perfectly suited to the best capacities of each group. One does wonder, though, whether the girls in Treble Clef ever stop smiling.

Perhaps the high point of the evening was the group of settings of "O Magnum Mysterium" by Morales, Victoria, Handl, and Gabrieli. There was no applause between these numbers, and the incandescent choral sound which was sustained throughout these four wonderful pieces defies verbalization.

Mr. Fankhauser and his chorus deserve the highest praise, but they don't seem to need much publicity. Hertz Hall was sold out Saturday night to a highly appreciative audience. The sooner we can hear such a concert again, the better.

Heyns' Statement

Editor's Note: The following is the text of Chancellor Roger Heyns' announcement of the Administration and faculty representatives to the newly formed Campus Rules Committee.

TO THE CAMPUS:

With the Christmas holidays nearly here, I should like to announce several recent developments concerning student affairs. The Academic Senate's Committee on Committees has sent me its nominations for the four faculty members on the Campus Rules Committee: Professor Robert O'Neil, School of Law; Professor Raymond J. Sontag, Department of History; Professor Lloyd Ulman, Department of Economics; and Assistant Professor Reginald E. Zelnik, Department of History. I am appointing each to the Committee. Vice Chancellor Earl F. Cheit will represent the administration. These individuals together with the five elected student representatives, Ed Berman, James Burton, Dan Griset, Bettina Aptheker Kurzweil, and Jacob Sperber, comprise the membership of the Committee. Shortly after classes resume I shall call the first meeting of the Committee and present to it a series of questions on which I shall seek its advice.

A study of student conduct and activity rules is in process at the Universitywide level as well. In this connection, Professor Searle and I met with the President's Council of Chancellors at the November meeting of The Regents to discuss possible changes in Universitywide policies. We are meeting again with the same group in Los Angeles on Wednesday to continue these discussions.

In regard to the Constitutional Convention, on December 9, 1965, we distributed copies of the Universitywide policies regarding student government to all the delegates. Professor Searle will distribute late this week further information regarding legal and policy aspects of the convention and the ASUC generally. With his help, I hope also to make some comments about possible roles and functions of student government in the University for the consideration by the delegates and the campus community. We plan to have this statement ready in the near future.

—Roger W. Heyns

Psychiatrists' Report Urges Colleges to Ignore Student Sex

NEW YORK (AP)—Should college administrators worry about their students' sex lives?

A report by a group of psychiatrists says they shouldn't, provided sexual activity is "practiced with appropriate attention to the sensitivities of other people."

An Associated Press survey of campus opinion today found much interest, but little agreement, concerning a report by a committee of the Group for the Advancement of Psychiatry, a nationwide organization.

Most college administrators who had read the report and were willing to comment on it approached it cautiously.

Dr. Henry Bruyn, director of the University's student health service, said:

"I think it is an excellent report. The sexual growth and behavior of young adults is very often distorted and disturbed by overly restrictive college rules and policies."

"It's a very liberal view, a little too far-fetched for me," said Thomas Jones, president of the University of South Carolina. "I can't be very detached about our young people's concerns and needs."

At the University of Michigan, Richard Cutler, vice president in charge of student affairs, said:

"These people are professionals and entitled to their own opinion, but the University of Michigan at this time is not prepared to follow their advice."

Their advice, in essence: Make explicit the school's attitude towards sexual conduct and set up a "sound rules structure"; but don't interfere unless sexual activity "fails to maintain privacy" and "is likely to be disturbing to others."

It "sounds like a good, sensible, down-to-earth statement of the situation," said William Speer, associate dean for student counseling at Massachusetts Institute of Technology. "I am all in favor of anything that meets the issue head on, rather than with pussy-footing."

The Rev. James McGlynn, dean of the Graduate School of the University of Detroit, a Roman Catholic school, called the report "a strange combination of valuable insights and bland oversimplification."

"It seems to overlook the sacred and personal nature of sex," he said. "Specifically for church-related colleges and universities our stand must clearly be for the morality of our religious group."

Letters to the Ice Box

On Antonioni

To the Ice Box:

Messrs. Vernik and Straus' review of Antonioni's "The Red Desert" reveals that they have not managed to identify the artistic method which the film has employed. That is why, even after the film is "well under way," they "still don't quite know what to make of the situation." This method consists in creating a sole character by identifying, as an artist, with him and describing external reality through his perception of it. It has had great fortune in cold-war literature, when it is pointless for the artist to simply describe the environment and people in it, as the Realists did, because nothing seems to be happening. Horrible threats are enclosed in countless silent warheads, aimed but motionless.

Our conflicts, too, seldom appear to us to materialize into gesture—e.g., revolution—but destroy us inwardly. When one sees "The Red Desert" from this perspective, it ceases to be a "bore." The reviewers are close, perhaps, when they mention "a visual background in which all nature echoes the distorted perception of a psychotic woman;" what we are seeing is, in fact, not nature at all but her perception of it.

Thus, when they say that Giuliana "never be-

comes real enough to warrant our interest" or that "human experience is missing from the photography," they are not understanding that every scene of the film is a study of her psychotic and very human personality, not just those in which she appears physically. This is why Antonioni focuses Giuliana against a "flat, angular, scarcely two-dimensional milieu" (including people, of course), thus emphasizing her aloneness.

I can't try to answer here the questions they rather idly raise, and others, on the interpretation of the films various symbols (the boy says in Italian, by the way, that 1 + 1 = 1 and proves it), but seen in the light of the above-described method they most certainly have been "charged with meaning." Nor do I find the Italian banal (let's not blame Antonioni for the subtitled).

With these remarks, I don't mean to say that "The Red Desert" deserves unqualified praise (elsewhere I've tried to examine the question you raise of the validity of the human experience and growth portrayed in the film) but only to clarify what must be clarified in order that the film may be viewed critically, with understanding of the director's intentions.

—Gordon M. Poole
T.A. Italian Dept.



The young bucks of America go clean-white-sock in the new crew Adler calls Adlastic

Meet the revolutionary crew of 65% lambswool plus 35% nylon with spandex for 100% stretch. Up and down. This way and that. That's Adlastic with the give to take on all sizes 10 to 15 and last far longer and fit far better. Size up Adlastic in 28 clean-white-sock colors. Clean-white-sock? The now notion with it even without the wherewithall. Whatever, get Adlastic at stores where clean-white-sock is all yours for just one young buck and a quarter. **ADLER**

THE ADLER COMPANY, CINCINNATI 14, OHIO

DIVISION OF BURLINGTON INDUSTRIES

BRUCE BARY

2576 Bancroft Way

Directly across from the campus

Pizza Haven

**Today Only
Spaghetti and
2 Pieces
Garlic Bread**

35c

2440 Bancroft Way
843-8476

(Special offer not good for delivery)

Co-op Residents Ponder Ridge Autonomy

By KAREN SJOGREN

The \$1.5 million Ridge Project, a new co-op to be completed in July, may not be University approved housing.

University Students' Co-operative Association (USCA) is polling those of its members who intend to live in the project on whether they want the project approved or not.

USCA has posted information sheets in the three women's and five men's co-ops.

Those who wish to live in the new co-op are asked to sign the sheet, stating how many semesters they have lived in a co-op, what USCA activities they have participated in, and whether they would prefer the Ridge project approved or not.

They are also asked if they would live in the project if it were not approved.

Gideon Anders, USCA president, emphasized the purpose of the questions on the information sheet on unapproved-approved housing is merely to gain the students' opinions on the matter.

Whether or not the USCA will even consider the matter of an unapproved Ridge co-op will be decided by the USCA Executive Committee and Board of Directors "sometime next semester."

He said the questions were entirely secondary to the main purpose of the information sheet, which is to ascertain the

demand for the Ridge project.

The demand to live in the Ridge project will determine if Ridge will accept applications from outside the co-ops or only present USCA members.

If the Ridge project were unapproved, the "significant changes would be in the woman's wing, where there would be no lockout, non-student supervision, nor University inspection."

The University presently inspects the co-ops unannounced once a semester. Also each of the women's co-op has a house mother.

An unapproved house, in addition, would not be required to follow the University rules which prohibit liquor and members of the opposite sex in rooms.

Anders said that this does not necessarily mean the new co-op would not have lock-out, or other regulations. It only means, he said, that the students in the co-op rather than the University would decide what rules and regulations would be established.

He said this "complete autonomy" is one of the advantages cited by proponents of an unapproved Ridge co-op.

Debbie Shields, vice-president of Stebbins Co-op, said this "autonomy" would be a disadvantage rather than an advantage.

"I don't like lockout," she said, "but I

don't think that is enough of a reason to sacrifice the physical condition of Ridge. I think lockout's on its way out anyway.

"The physical standards of the house wouldn't be kept up unless they were enforced by the University."

She referred to such standards as kitchen regulations, general cleanliness, and amount of sleeping space.

Other co-op members disagreed, including Penny Whiteman, who said, "I think it's possible for a co-op to run without all those rules," and added, "It would attract a more independent type of person."

Another possible disadvantage of an unapproved house is that "the building will not receive the advertising and publicity" which present co-ops receive through the University.

This includes, for example, brochures on approved housing which are sent to new entering students.

In addition, co-op member Karen Post pointed out the disadvantage of "not being able to advertise the Ridge project as an 'approved house'—not that the word 'approved' means that much."

Another important consideration in the issue is that the University requires women under 21 to have the permission of their parents in order to live in unapproved housing.

According to Al Davenport, of Oxford co-op, it would be financially unfeasible to consider running an unapproved house if few women under 21 could get permission from their parents, and those over 21 preferred to live in an apartment rather than an organized living group such as the Ridge project.

One freshmen co-op member added this factor would make the population of Ridge "more selective—there wouldn't be as many undergraduates."

"I don't think my parents would let me live in Ridge if it were unapproved," she said.

Anders said one of the problems in the question of an approved versus unapproved housing is that there is no exact definition of "approved" or "unapproved" housing.

Living quarters can have adequate facilities and follow certain regulations, yet voluntarily choose to run on an unapproved basis, he said.

Anders said it is the function of the Social Policy Board, organized by the Dean of Student's Office, to define what comprises approved housing and to recommend what rules and regulations should be in operation.

Church Figure To Talk Tonight

David du Plessis will speak tonight at 7 p.m. at the Chi Alpha Student Center.

He is a world traveler, leading figure in the Pentacostal Church and a personal guest of the Bishop of Rome at the Ecumenical Council and will speak on "Charismata Around the World."

The Center is located at 2530 College Ave.

Memo

AFT: noon, 251 Dwinelle Hall. Meeting of Library Chapter.

Baptist Student Movement: 2 p.m. to 4 p.m., 103 Durant Hall. Organizational meeting.

Chi Alpha Student Center: 7 p.m., 2530 College. Davis du Plessis, speaker.

Christian Science Organization: 7:30 p.m., 2601 Durant. Testimonial meeting.

Class Officers' Board: noon, Douglas Fir Room, Student Union. Meeting.

Hillel: 5:45 p.m., Hillel Foundation, 2736 Bancroft Way. Kosher Co-op. Price \$1.10, 7 p.m. to 10 p.m., Hillel Foundation. Israeli folk dancing.

Megaphone Society: 7 p.m., fourth floor, Student Union. Meeting.

Particle-Berkeley: 8 p.m., 145 Dwinelle Mall. David Lyon, professor of chemical engineering, speaking on "Energy Transfer Between Liquid Helium and Solid Surfaces."

Stiles Hall: 4 p.m., 2400 Bancroft Way. Coffee hour with Edward Setchko.

Study Abroad Counselor: 6:15 p.m., Putnam Hall Lounge. Discussion.

UC Square Dance Club: 8 p.m., Plymouth House. Christmas Party.

UC Yacht Club: 8 p.m., Stevens Lounge, Student Union. General membership meeting, election of officers.

Vietnam Day Committee: 7:30 p.m., 204 Engineering. Meeting.



DODGEREBELLIONGIRL Watchers, Rejoice!

Prompted by a ground swell of collegiate enthusiasm (and to help eliminate long vigils and scrambling for choice seats when she suddenly appears on TV), Dodge Division is happy to publish Reb-Girl Pam Austin's complete schedule through January, 1966. Be sure to watch the Rose and Orange Bowl games on New Year's Day. You'll see Pam in a new color commercial introducing the fabulous fastback, Dodge Charger. And now a word from your sponsor: Back to the books!

12/19. AFL Football. 2 Positions. NBC.
1. 1. Rose Bowl. 3 Positions. NBC.
1. 1. Orange Bowl. 3 Positions. NBC.
1. 2. Wackiest Ship. 1 Position. NBC.
1/3. Run For Your Life. 1 Position. NBC.
1/7. UNCLE. 1 Position. NBC.
1. 8. Senior Bowl. 2 Positions. NBC.
1/8. Big Ten Basketball. 2 Positions. Sports Network.

1/10. Run For Your Life. 1 Position. NBC.
1/12. Chrysler Theater. 4 Positions. NBC.
1/13. Dean Martin. 1 Position. NBC.
1/14. UNCLE. 1 Position. NBC.
1/15. Big Ten Basketball. 2 Positions. Sports Network.
1/15. AFL All-Star. 3 Positions. NBC.

1/19. Hope Special. 3 Positions. NBC.
1/21. UNCLE. 1 Position. NBC.
1/22. Big Ten Basketball. 2 Positions. Sports Network.
1/27. Dean Martin. 1 Position. NBC.
1/28. UNCLE. 1 Position. NBC.
1/29. Big Ten Basketball. 2 Positions. Sports Network.

The Dodge Rebellion Girl Watchers Club of America Wants You!



CAMPUS SEXUAL FREEDOM FORUM

presents

DANIEL ROSENTHAL

past president of the Cal Conservatives for Political Action, speaking on

"A Conservative View of Sexual Freedom"

TOMORROW NOON
in 100 Wheeler

DAILY CALIFORNIAN WANTS ADS

Apartments

This newspaper fully supports University policy on housing. Therefore, classified advertising relating to housing is only available to those who do not discriminate on the basis of race, color, religion, natural, origin or ancestry.

Bishop Parker Apartments 2124 PARKER STREET (between Fulton & Shattuck) STILL the only development offering the 'package' of all these features:

3 BLOCKS CAMPUS, 2115 Haste Street. Spring term \$110 up. Attractive, new, soundproof one bedroom apartments.

STUDIO APT. FURNISHED tile shower, private entrance, no lease, \$75. Phone 845-2766.

STUDIO APARTMENT ELLSWORTH at Blake. Sun porch. Outside entrance. \$95./month. Call TH 3-1479.

HOWARD HALL APARTMENTS

The only apartments in Berkeley built to U.C. specifications and officially approved by the University for women students.

\$295 for Each Student From January to June

Uniquely enables students to enjoy the popularity, home-like comfort, and freedom of apartment living while satisfying themselves and their parents of U.C. approved residence.

Completely furnished in absolutely every detail, including the kitchen, except for linen and towels. Luxuriously appointed, at ideal location.

Penthouse and other space available for spring semester. Call or visit Howard Hall Apartments—telephone 849-1081—2330 Warring Street at corner of Channing Way.

Reserve for February. Convenient, quiet two bedroom newly furnished for 3 or 4 students.

QUIET MODERN ONE bedroom, unfurnished. W/W, drapes, disposal. Married/Grad. \$125. 2521 Regent. 848-3244.

SUBLET SPRING THROUGH August, 2 bedroom, unfurnished. Dwight-Telegraph. \$125. Grad/couples. 841-5504. Afternoon-evenings.

SUBLET JAN. TO June, 2 bedroom modern, pool, cheap. 1927 Dwight, Apt. 210. 849-2728.

STUDIO SPRING SEMESTER sub-let large comfortable older building attractive furnishings. Convenient 2320 Haste #2, 843-9440.

SUBLET OR SHARE spacious two bedroom apartment, February to June. Fireplace. 2214 Channing Way. 849-3672.

ON CAMPUS MODERN two bedroom full carpeting. Furnished. Garage parking. \$190. 2534 Benvenue. 848-2046.

DESIGNED FOR 2, 3, or 4.

VERY LARGE, NEW, FURNISHED 2 BEDRM. Desks, bookshelves, W/W carpets, electric kitchen, large divided bathrooms, large closets, balconies, sun decks, heated pool, storage lockers. Soundproofed. Reasonably priced. Reservations for Spring or Summer.

1927 DWIGHT WAY. TH 3-0164.

MODERN ONE BEDROOM. Sublet two blocks northeast campus. Married/Grad. \$115. Call 6:30 p.m. 848-8354.

NEAR CAMPUS, SPACIOUS, modern, 2 bedroom, unfurnished, carpeted, drapes, parking, avail. Feb. 1, \$155.00—848-5364.

FURNISHED APT. LARGE living and bedroom. Ground floor. 2 or 3 students. 1 block North Gate. \$150 month. TH 3-6229.

HEARST NEAR NORTHGATE. \$92.50 furnished studio, utilities included. 841-1182.

SUBLET TO JUNE. Modern three bedroom apartment, furnished, pool. Four or five. 2150 Channing. 843-7455.

SPRING SEMESTER ONE bedroom furnished, near campus, modern. Free to keep, dishes, linens, utensils. \$125 (approx.). 841-4466.

SPRING SUBLET THREE bedroom furnished flat, near campus, just redecorated. \$230/month. 849-1864. 12-14-4-S

Apartment to Share

FEMALE ROOMMATE FOR spring semester, modern one bedroom apt. \$65 per month. Call 843-7244. 12-8-15-F

SPRING: SEMESTER. FEMALE roommate wanted; 2 bedroom apt. to share—three others. Good location. 549-0363. 12-8-14-S

FEMALE ROOMMATE FOR modern furnished one bedroom, quiet, 3 blocks to UC. \$62.50. 849-1839 5-7 p.m. 12-8-17-S

FEMALE ROOMMATE NEEDED; \$60, share with two girls. Two bedroom; two bath. 549-0679. 12-8-14-B

GIRL ROOMMATE WANTED spring semester. Share furnished 1 bedroom apartment Northside, 2202 Cedar. \$62.50. 841-7026. 12-10-16-W

FEMALE ROOMMATE WANTED: Spring semester; modern, furnished, two bedroom; share with two others; \$60. 843-0758. 12-13-17-H

SHARE TWO BEDROOM apt. with two undergrads; parking; available now. \$55. Dwight & Dara. 549-1817. 12-13-17-G

FEMALE WANTED to share modern furnished two bedroom apt. \$55. Call evenings—843-0806. 12-13-17-R

SPRING SEMESTER. FEMALE wanted to share an attractive spacious flat with three others. 841-6836. 12-14-15-H

MALE STUDENT NEEDED to share furnished apt. near campus. Private bedroom. 848-7381 after five. 12-14-15-K

4th GIRL WANTED to share spacious Blake Street apartment. \$55 month. 849-4711. 12-14-4-E

Room and Board

AVAILABLE NOW. BEAUTIFUL rooms for professional men and women or graduate students. Delicious food, reasonably priced, 3 blocks from campus. See manager at Haste House, 2717 Haste Street, Berkeley; or phone 849-2383, 254-5584. 12-16-16-N

INTERNATIONAL HOUSE, RESIDENCE and program center for American and foreign students, will have openings in double rooms for men for Spring semester. Upper division undergraduates and graduates eligible. Rooms and Board \$430 per semester. Apply Residence Office, International House, Piedmont Ave. & Bancroft Way. 12-1-17-B

Rooms

GIRLS ROOM/BOARD. Clean rooms. Good food. Low rates. Baptist Student Center. 2601 Channing. 843-1183. 12-11-30-B

ROOMS—BEAUTIFUL REDWOOD house—men—near campus. No lease. Single or double. 2901 Channing Way 841-9148. 12-6-17-A

2414 TELEGRAPH. APT. 302. \$35. Use kitchen. Consider two. Inspect after 4 p.m. Women. 12-13-17-A

FURNISHED ROOMS, KITCHEN privileges. One block North Gate. \$30 month. TH 3-6229. 12-13-17-N

ROOMS FOR GIRLS. Single, double rates. Kitchen, Laundry facilities. 2506 College. Phone Manager 845-9591, 531-9240. 12-13-2-16-L

553—ROOM ONE block from Telegraph, three blocks from campus. Kitchen with cookware. 848-9223 Tim. 12-14-15-E

Board

COED DINING LOW rates, excellent home cooked food. Baptist Student Center. 2601 Channing. 843-1183. 12-11-30-B

Miscellaneous Rentals

SMALL OFFICES OR study rooms, near campus. \$20-\$35/month. 841-4450. 12-8-14-L

ARTIST'S STUDIO \$25. Not for residence. Hearst near North Gate. 843-8790/845-6000 after 6 p.m. only ex. 3641. 12-9-15-Mc

House to Share

FEMALE ROOMMATE: SPRING semester \$50—share large house with 3 others. Dwight/College. 841-9264. 12-8-14-B

HIP MALE ROOMMATE needed. House, north Oakland, off Grove. Pleasant room, \$49/mo. Jerry, nights. 654-1048. 12-10-16-S

TWO GRADS SHARE large house with third. Private bedroom. Fabulous view. Excellent for entertaining. 655-9851. 12-10-17-N

Rentals Wanted

WANTED 2 BEDROOM APARTMENT in older building or house near Cal for second semester. Call 658-9763. If no answer call 261-0176 and leave your number. 12-13-2-A

HOUSE WANTED—Large, near campus. Semi-permanently. 845-0458 or 652-6017 evenings, weekends. 12-13-17-M

Miscellaneous For Sale

IMPORTED INDIA coarse cotton, 36" natural for drapes etc. 39c yd. Berlin, natural 40c, color 65c. Canvas for art painting 49¢/60" 72" wide also silks, woolsens, synthetics. Freifields Fabrics 2042 University, next to U.C. Theatre. R-11-16-F

ALL SUPPLUS DESKS \$19.95. Files, Kardex Duplicators, Projectors, etc. Kantor & Sons 5847 San Pablo. 653-1254. R-12-17-K

NEW BABY CRIBS \$15.95 up; portable cribs highchairs, bassinets, strollers, carriages, clothing, etc. Used crib, \$10; highchair \$4. JEAN'S 1529 Clay, Oakland HI 4-5170. R-10-5-3-J

T.V. RENTALS \$10 month—Free Delivery. Oil TV, 1796 Shattuck Ave. Phone 848-5593. 11-16-15-C

DALMATIAN NAMED SNCC needs home. Year old. Beautiful. (Riot of black spots). Reasonable. 848-0484. 12-8-14-A

CUSTOM MADE AND DO-IT-YOURSELF deep pile wool rugs. Some Plax, 2990 Adeline. 843-7178. 12-8-14-K

PENTAX SV 35mm camera, Super-takumar f/1.8 lens, self timer, coupled meter, leather case. \$130. 843-7178. 12-8-14-K

20' SLOOP, CARINITA class, racing-cruising, f/Dac. Sis., O'bra., Head top condition. 841-6962. 12-9-15-S

12 STRING GUITAR, Sell (\$100/offer) or trade comparable G-string steel guitar. Eric 885-9539. 12-10-16-S

GIRL'S BICYCLE, USED 1 hour, \$30. Short wave radio \$35/\$35. TH 1-6667 eves. 12-14-2-3-D

SKIIS (6'11") Boats (size 10) Poles. All in excellent condition. \$40. See at 1832 Vine (up). 12-14-15-O

SALE OF 100% WOOL sweaters sponsored by manufacturer for marketing study 1/2, 2 1/2 regular price. Different size style for men, ladies, teenage. TH 9-3586 evenings, weekends, holidays. 2125 Prince, Berkeley. 12-14-6-H

Child Care

BABY SITTING DAYTIME in my home. My child, is three. Cynthia Carvalha. 655-2031. 12-8-14-N

Typing

THIS NEWSPAPER REQUIRES ALL PERSONS LOCATED IN BERKELEY TO SHOW PROOF OF BUSINESS LICENSE BEFORE PLACING TYPING ADS.

TYPING, TERM PAPERS, Call 845-8152 between 9 a.m. and 8 p.m. R-12-13-S

TYPIST: THESES, DISSERTATIONS, Manuscripts, IBM pica, elite, Executive, Charter type for tables—LA 4-6673. R-12-13-S

Typing—Printing—Mimeographing

\$8.25 per 1000 8 1/2 x 11 printing! RESUMES — Beautifully Printed

FYBATE PRINTING SERVICE 2440 Bancroft — TH 3-8080 R-12-1-F

TYPING, IBM ELECTRIC. Term Papers, Theses, Dissertations. Call LA 4-2348. R-1-7-B

EXPERT TYPING, PAPERS, theses, dissertations. Reasonable rates. Grace O'Connell, 771 Pomona Ave. El Cerrito. LA 6-3043. R-11-22-O

SCHEDULE YOUR THESIS-dissertation work with Type-Ink, 2286 Fulton Street, avoid disappointment during rush, 8:30 to 5 weekdays 849-1625. R-11-30-T

TYPING (ELECTRIC), PROMPT service. Theses, term papers, manuscripts. R-12-14-C

FOR ACCURATE TYPING on Electric Pica. Term papers, theses, manuscripts. Call Mrs. McCroskey, LA 6-6359. R-1-5-Mc

TYPING, TERM PAPERS, THESES, dissertations. Experienced. Near Campus. Willow Taylor, 849-1508. R-11-18-T

HAVE EXPERIENCE, NEW electric Pica, will type theses, briefs, etc. Accurate, reasonable. LA 5-3331. Mrs. Brazzale. R-11-16-B

THESIS, MANUSCRIPT TYPING, technical symbols. Electric. Near campus. Phone 841-3252. Time or project rates. R-12-14-H

PAPERS AND THESES on Electric Typewriter; 1939 Stuart Street, TH 8-2713 or TH 8-1778. R-1-7-R

SECRETARIAL SERVICE—TYPING—Mimeographing, IBM Executive Typewriter. Gladys Blankenship, 700 Arlington Ave., Berkeley. 525-7694. R-1-5-B

EXPERT TYPING: THESES, dissertations, manuscripts. Electric. Fast service, reasonable rates. Call 655-5861. R-12-20-L

PROFESSIONAL TYPIST, PAPERS, manuscripts, briefs, theses, dissertations, stencils, ditto masters. TH 3-5655, Betty Mann. Message, TH 3-9263. R-12-2-M

THESES, TERM PAPERS, etc. Technical typing, Pick-up, delivery. Stencils. Also graphs, illustrations: Reasonable. LA 7-1243 1-5 p.m. 11-9-17-0

PROFESSIONALLY EXPERIENCED, FAST manuscript typing on IBM Selectric, plain & italics type, symbols. Mrs. Lym, 525-7222. R-12-15-L

FOR OUTSTANDING TYPING call Mrs. Henry Lynn, LA 6-5466. Extensive experience in term papers, theses, manuscripts. R-11-18-12-17-L

EXPERIENCED ON IBM. Executive. Theses, technical typing, paper. Multitasking service available. Fast. Larry Freda. 848-9047. R-11-18-17-F

EXPERT TYPING. ALL types. Convenient Berkeley location. Reasonable rates. Call before 8:30 p.m. 843-5278. R-1-9-P

TYPING-ELECTRIC, CARBON ribbon. Non-technical. Pick-up, delivery. 835-4884. 12-2-15-S

TYPING: THESES, TERM PAPERS, manuscripts. Phone: TH 3-8610. 12-2-27-H

TRIED THE REST? Now try the best. Expert typing—IBM—fair rates. Secy. major. Will pick up and deliver. 234-2426. R-2-7-S

TERM PAPERS TYPED—30¢ per word. Trumpet, silver with case \$20.—Guitar 3/4 \$800. 654-1922. 12-14-4-W

Help Wanted

ENERGETIC, INTELLIGENT YOUNG couple to manage well-maintained older building near campus. Write skills and background to Box 5, 209 Eshleman Hall, campus. 11-24-1-7-5

STAFF NEEDED for the California Engineer. Rapid advancement to paying positions. All majors and backgrounds sought. 516 Eshleman, Ex. 3960. 12-9-15-C

THE CALIFORNIA ENGINEER seeks authors for a Special Issue entitled: Communications in the Modern World, 516 Eshleman Hall, ext. 3960. 12-9-15-C

SINGLE MEN age 21-40. Volunteer for space-oriented nutrition experiment, UC campus. 3-4 months 100% full-time employment. Housing & generous salary provided. Must be in excellent health. Call UC extension 1037, Mrs. Wasik. 12-10-7-D

HASHERS WANTED EXCELLENT meals. Call Andy 845-9220 between 8:30 a.m. and 5:30 p.m. 12-13-15-A

ADMINISTRATIVE ANALYST, JUNIOR—\$583 to \$644. Young college graduate as trainee in municipal budget and finance. Challenging. Good benefits. Personnel Department, Room 100 City Hall 273-3111. 12-14-16-O

Apparel

Excellent Resale Clothing Men's, Women's, Children's All Merchandise Cleaned and Pressed. Shirts \$.98-1.98; Sweaters \$.78-2.98; Blouses \$.35-.98; Men's Sport Coats \$1.98-3.98; Slacks \$1.98-2.98; Shirts \$.50-.98. THE TURN-ABOUT SHOP, 567 San Pablo Ave., Albany across from the Albany Branch. Fri. till 524-8865—Open Tues.-Sat. 10-6. R-12-3-T 9 p.m.

BUY and SAVE on new and used clothing! well known brands and labels. WE PAY CASH. For food and clothing. "New and Used Clothing Store" GARMENT EXCHANGE "New & Used Clothing Store"—we buy & sell 11732 San Pablo Ave., El Cerrito Phone: 234-0341 R-1-7-G

Instruction

LEARN SKYDIVING—Stevens School of Sport Parachuting, Oakland International Airport, Bldg. 727. Phone 569-5358. R-12-7-4

AWAKEN YOUR INTUITION, Live in Higher States of Consciousness, Study Yoga in HILMA LAYAN ACADEMY, 2575 Sacramento, S.F. 931-5011 evenings. R-11-24-M

Miscellaneous Services

AUTO DRIVING INSTRUCTION. Private lessons. Patient, professional instructors. Dual controls. Daytime, evenings, Saturday. Convenient pickup service. Berkeley Driving School, LA 4-5321. R-11-12-B

ALTERATIONS BY EXPERIENCED dressmaker. Ladies' apparel. Convenient North campus location. Reasonable rates. Phone 849-0371. R-12-15-S

edit

Prepares manuscripts of any size, on any subject for final typist or printer; integrates figures, tables, footnotes; indexes; proofread. M.A. English, 7 years general book and technical editing experience. Phone 841-8837 most days, any evening. Box 801, Berkeley. R-11-24-S

Student Prices

XEROX COPIES 8 1/2 x 11" 10 cents 8 1/2 x 14" 12 1/2 cents

Green Light Copy Service 2634 Ashby Ave. (near College Ave.)

Open 9 to 6 Monday thru Saturday

TH 8-1715 R-12-19-G

CUSTOM SHIRTMAKING and alterations on clothing. Fast dependable service. 843-7400. R-11-9-M

ALL SURPLUS DESKS \$19.95. Files, Kardex, Duplicators, Projectors, etc. Kantor & Sons, 5847 San Pablo, 653-1254. R-12-17-K

CONTACT LENSES EXPERTLY fitted with latest equipment in modern office; 1/2 block from campus—clinic fees. Dr. Ralf W. Lorenz, Optometrist. 2132 Center Street, Berkeley, 843-9068. R-1-7-L

TROUBLE HEARING IN class? A Hearing Aid may be your answer. Berkeley Hearing Aid Center, 1/2 block from campus—2132 Center St. H. J. Bluchel, 841-0681. R-10-12-B-8

FASTIDIOUS WOMEN, HAVE unwanted hair removed. Jeanne McGettrick, R.E., Room 302, 2140 Shattuck Ave. Pho. 849-2072. R-11-8-Mc

UNWANTED HAIR MARS your beauty. Permanent, gentle. Ruth Sayers, Registered Electrologist. 845-1917. R-11-24-1-7-S

BERKELEY LITHO SERVICE: low prices; fast service; student discounts. 3005 Grove near Ashby, TH 1-5807. 12-8-14-S

Announcements

FREE STUDENT DIRECTORY

While they last with the purchase of a Blue & Gold. \$8.00. 515 Eshleman 12-2-17-B

STUDENT DIRECTORIES

names and addresses for your

XMAS LISTS

ASUC STORE Price \$1.00

with ASUC card 50¢ 12-6-17-A

Will the student or students who removed the scaled model of Eshleman Hall from the north area of Heller Lounge exhibit PLEASE return it to the information desk of the Student Union. 12-10-15-A

WILL PERSON WHO removed grey Samsorite briefcase from cafeteria cubicles Fri. noon please return my class notes—Student Union information desk. DESPERATELY NEEDED FOR MIDTERM FRIDAY! 12-14-15-B

REWARD FOR COLOR slides of big game rally taken from Eshleman Basement. 843-8289. 12-14-17-C

Tutoring

FRENCH, ITALIAN, GERMAN, SPANISH coachman experienced tutor. Course exams. M.A., Ph.D. 3 minutes Dwinelle. TH 3-5158. R-9-30-1-7-4

TUTORING FOR MEN in any lower division math, ematics or physics. Esten Buck (MA '30), 242 Channing Way, Apt. 9. TH 8-3346, 7 to 7:30 p.m. Rates reasonable. R-11-22-I

RUSSIAN BY NATIVE retiree instructor at Cal \$3.00 per hour. TH 5-7461. 10-8-12-17-I

TUTORING: STATISTICS, MATH, physics, etc. by statistics graduate student. Tutors wanted. Leighton Whipple 843-6915. MWF 3-6. 12-13-2-20-W

Transportation

FLY TO Reno. Private pilot leaving Dec. 31—return Jan. 1. Cherokee 235, 2 seats available. 843-1180 nites. 12-9-15-S

WANTED: RIDER TO Chicago—Xmas vacation. Mrs. Bernard. 532-2508 after 5 p.m. 12-13-17-B

SAVE PLANE FARE. Drive VW from Washington D.C. to Berkeley, anytime. 527-2692 early or late. 12-14-17-C

Travel

1966 STUDENT TOURS TO EUROPE. Lower priced than all other INFO: Intercontinental STS, 323 N. Beverly Dr., Beverly Hills, Calif. 11-29-2-2-1

Autos For Sale



VOLKSWAGEN 1966. SAVE considerable on Fastbacks, Squarebacks and Beetles. Auto Squors Co-op International. (415) 221-2000. R-1-5-A

1957 CHEV., NEW rebuilt engine, good rubber, immaculate throughout, automatic transmission, 2343 Warring Blvd. 845-9210. 11-29-1-7-G

1957 TR-3. REBUILT engine differential, new transmission, roll bar. 1931 Dwight #15. 841-8318 after 6 p.m. 12-1-14-S

1962 VOLKSWAGEN SCODAN (black), excellent condition. Radio, heater, snow chains, dual skiracks. \$900. Day: 845-6000 ext. 1017, evenings: 845-3235 Lynda. 12-1-14-B

TRIUMPH 1964 SPITFIRE red convert., 24000 miles. Clean. New top. \$1300/offer. TH 3-4490 evenings, weekends. 12-9-15-S

VW 1962 EXCELLENT condition. Radio, W/W, rebuilt engine. Must sell. \$925. Call Bud Sanders. 841-9148. 12-6-17-R

VOLKSWAGEN, 1500 S Variant (Squareback), dark blue. Virtually new, 3200 miles; radio, seat belts, dashboard rack. \$2,200. 525-8940. 12-8-14-K

TR-3 '59. 3000 running condition—needs paint—R/H. \$825/offer. TH 8-2986. 12-8-17-V

C

NEEHAN, Wis. (AP) — If your newspaper delivery boy looks a little worn lately, this may help explain it — newspapers used 86 pounds of newsprint this year for every man, woman and child in the United States.

State Presses Quarter Plan

Much to their apparent displeasure, the trustees of the California State Colleges were urged yesterday to speed up conversion to year-round operation and the quarter system.

The California Co-ordinating Council on Higher Education voted 12-3 to order the University and the State Colleges to complete conversion to the quarter system by 1967-68 and to year-round operations by 1970-71.

The three dissenting votes were cast by the three State College representatives on the council.

The Council oversees the planning of higher education in Cali-

fornia, at the University, State College and Junior College levels.

The text of the resolution is as follows:

"The Co-ordinating Council on Higher Education has declared its desire that the University of California and the California State Colleges proceed with year-round operations on all campuses at the earliest feasible date, and the Board of Trustees of the California State Colleges and the Board of Regents of the University of California have declared their intention to proceed with year-round operations;

"And, whereas the Legislature

has supported the move toward year-round operations by appropriating funds for preliminary costs;

"And, whereas the capital outlay is estimated to be reduced appreciably in the long run under year-round operations and future state bond issues may soon be necessary to finance additional capital outlay for higher education;

"Now, therefore be it resolved that the California State Colleges be requested to study the feasibility of moving to the quarter system throughout the system by the academic year 1967-68;

"And be it further resolved that the California State Colleges and the University of California be urged to complete the transition to year-round operations for all campuses by the academic year 1970-71, except for campuses of the University of California and the State Colleges newly opened since the adoption of the Master Plan and campuses and State Colleges where the size is deemed too small for effective year-round operations, such size to be subject to study by each segment with a report to the Council."

Union Program Board Corner

LOUIS LOMAX

to speak in Pauley Ballroom noon, Wednesday, Dec. 15

**Also on Wed., 4 p.m., Heller Lounge.

Garff Wilson reading Dicken's "A Christmas Carol"

Beethoven's Birthday Party, Thurs., Dec. 16, noon, Heller Lounge

MOVIES

BERKELEY THEATERS

BERKELEY 2425 Shattuck Thornwall 8-4300

Richard Widmark, Sidney Poitier

"THE BEDFORD INCIDENT"

— also —

"FAIL SAFE"

Dan O'Herlihy, Walter Matthau, Henry Fonda

Box Office Opens 6:30

CINEMA Shattuck & Haste Thornwall 8-2038

LAST 2 DAYS!

Antonioni's

"THE RED DESERT"

— and —

Robert Enrico's

"MAGIC MOUNTAINS"

Starts Thurs. Inkar Bergman's

"THE SEVENTH SEAL"

GUILD Telegraph & Haste Thornwall 8-2038

"BABY THE RAIN MUST FALL"

— and —

"THE HUSTLER"

Paul Newman, Jackie Gleason

STUDIO Telegraph & Haste Thornwall 8-2038

"SINGIN' IN THE RAIN"

— and —

"SUNSET BLVD."

California Kittredge & Shattuck 848-0620

"SANDPIPER"

Liz Taylor, Richard Burton

— and —

"SWEET BIRD OF YOUTH"

Paul Newman, Geraldine Paige

ALBANY Solano at San Pablo LA 4-5656

Vivian Leigh, Simone Signoret, Lee Marvin

"SHIP OF FOOLS"

— and —

Terry Thomas, Michael Callan

"YOU MUST BE JOKING"

Adult Matinee Sat., Sun., 1:00 p.m.

Stud. rate w/reg. card

NORTHSIDE 1828 Euclid TH 1-2444

STUDIO A —

"THE PUMPKIN EATER"

Anne Bancroft, James Mason

— and —

"LILITH"

Warren Beatty, Jean Seberg

STUDIO B —

"DR. STRANGELOVE"

Peter Sellers

— and —

Jacques Costeau's

"WORLD WITHOUT SUN"

United Artists 2274 Sht TH 3-1407

"THE MUSIC MAN"

Robert Preston

— and —

"FANNY"

Leslie Caron, Maurice Chevalier

OAKS Solano at Alameda LA 6-1836

"SITUATION HOPELESS BUT NOT SERIOUS"

Alec Guinness

— and —

Terry Thomas

"A MATTER OF WHO"

ELMWOOD 2964 College TH 8-0931

FINAL WEEK!

Adult Swedish Film

"TO LOVE"

— and —

Unusual, Startling!

"MALAMONDO"

UC 2036 University Ave 843-6267

"GHIDRAH—THE THREE-HEADED

MONSTER"

— and —

"THE BLOB"

Amigos Anonymous Train In Oakland for Mexico Project



AMIGOS ANONYMOUS . . . self-help on the community level.

The romance of Old Mexico is combined with a chance to help others under the Amigos Anonymous program.

Amigos Anonymous, a service organization which sends members to Mexico each summer to participate in self-help programs on the community level, is recruiting volunteers for next summer.

Amigos member, Steve Hughes, said the group conducts a training program similar to the Peace Corps' training period.

The training program consists of community work in "the ghettos in East and West Oakland," he said.

He said the project work here plus lectures helped the prospective Amigo worker prepare for the summer work in Mexico.

Among the training programs in Oakland is teaching seventh and eighth grade students one night a week a subject not normally taught in public schools, he said.

The Amigo's Mexican work consists of working with Mexicans "in setting up health, education, and building programs in 14 villages," Hughes continued.

Amigos has set four prerequisites for prospective summer workers:

- One semester or 40 tutoring hours of Spanish.
- Fifteen hours of work in community development projects in the Bay Area.

- One college semester of schooling.
- Good mental and physical health.

These prerequisites have always been "more or less unofficial" and not required, he said.

"Although each student in the program may have different motives, the general philosophy of the group is the same—the future of the developing nations lies in their ability to use their human resources at the community level," he said.

Students interested in the program may go to or call the Amigos office at 2431 Durant Avenue, telephone 841-8953, or may call Bob Gatov at 849-4702.

Constitutional Convention

There will be a plenary meeting at 7:30 p.m. tomorrow in Pauley Ballroom.

The Activities and Services Committee will meet at 6 p.m. tomorrow in 303 Eshleman to discuss the scope and financing of future ASUC activities.

The Structures Committee will meet Thursday at 3:30 p.m. in 505 Eshleman. This room is now the Convention office.

Convention..

(Continued from page 1)

During yesterday's meeting, Ned Averback, alumni Representative to the Senate, bitterly attacked the allocation of funds to the Convention, saying the Senate had no control over the body.

The rider to the budget request was introduced by Samuel Markowitz, Senate faculty representative.

The Senate will meet tonight at 7 p.m. in the Senate chamber on the ground floor of Eshleman Hall.

At the meeting the Senate will decide whether to accept or reject Fi-Com's recommendation on the Constitution's budget and an earlier Fi-Com recommendation on ASUC budget cuts.

Brougham said the Convention would have a better chance of getting money from the Senate since there is a heavier State representation on the senate than Fi-Com.

The Senate will also consider the validation of this week's primary results and vote on whether to give up salaries for all Senate members except executive members.

The motion by Commuter-Independent Rep John Simmons of Slate would have the Senators voluntarily relinquish their salaries in order to help finance the Constitutional Convention.

Peace Corps Meeting Slated

Peace Corps representatives from summer training projects will hold a symposium at 7:30 p.m. today in 11 Wheeler Hall to evaluate their experiences and to discuss opportunities for interested Juniors next summer.

The two dozen University students, who have attended the advanced training programs, will be leaving for Brazil, Africa, Thailand and Turkey next year.

Harris Wofford, associate director of the Peace Corps, and Dan Sharpe, former representative in Bolivia and Peru will moderate the panel and will also be on campus this week to set up training programs in Berkeley next summer.

After the discussion, "A Choice I Made," a film of the Peace Corps in India, will be shown.

Summer openings for men and women students on a college board are available in a St. Louis department store to residents of the area. Interviews will be held during Christmas recess. Apply: Student Placement Center.

OAKLAND THEATERS

Paramount 2025 Broadway TW 3-2300

"THE CINCINNATI KID"

Steve McQueen, Edward G. Robinson

— and —

"OPERATION C.I.A."

ROXIE 819 - 17th St TW 3-3311

Best of the year!

"MY FAIR LADY"

— and —

Rex Harrison, Audrey Hepburn

Special Student Rates Sun.-Sat. \$1.50

Grand Lake 3200 Grand GL 2-3556

"GHIDRAH—THE THREE-HEADED

MONSTER"

— and —

"THE BLOB"

Piedmont 41st & Piedmont 654-8727

Ingrid Bergman, Rex Harrison

"YELLOW ROLLS-ROYCE"

— and —

Sophia Loren, George Peppard

"THE GREAT SPY MISSION"

(Code name: Operation Crossbow)

Starts Dec. 22 — "THUNDERBALL"

Parkway Park Blvd. near Lake Merritt 835-3535

6th Fantastic Week!

"THE KNACK . . . AND HOW TO GET IT"

Rita Tushingham

Cannes Film Winner 1965

— and —

Peter Sellers, Terry Thomas

"YOUR PAST IS SHOWING"

TOWER 5110 Telegraph Ave 653-8022

MOST TALKED ABOUT PICTURE

Rod Steiger as

"THE PAWNBROKER"

— plus —

"MONKEY IN WINTER"

Jean-Paul Belmondo

Attend a Movie Tonight

art seminar-nong gallery

professional training
painting-sculpture-philosophy of art

5819 college ave., oakland