



**ON THE WAY**

**SEKOU**

**COMING THROUGH**

**Sophomore Linebacker Sekou  
Sanyika Thrives Despite the Odds**

**GAL VS ARIZONA STATE**

**Also Inside**

**Today's Lineups**

**Pac-10 Bowl Outlook**

**THE DAILY CALIFORNIAN**

**11897**

# THE DAILY CALIFORNIAN

GAMEDAY

NOVEMBER 8, 1997 • CAL vs. ASU

Editors: Yash Mehta and Joe Eskenazi  
 Cover Design: Anthony Biondo  
 Cover Photo: Jesse Ehrman  
 All Departments: (510) 548-8300  
 Fax: (510) 849-2803  
 Publication Office: 600 Eshleman Hall  
 UC Berkeley  
 Mailing Address: P.O. Box 1949  
 Berkeley, CA 94701-1949  
 E-Mail: dailycal@dailycal.org  
 Online Edition: http://www.dailycal.org

Published by the Independent Berkeley Student Publishing Co., Inc., 1996, all rights reserved. Reproduction in any form, whether in whole or in part, without written permission from the editor is strictly prohibited.

## Editor's Note

Arizona State head coach Bruce Snyder returns to Memorial Stadium armed with a team making a rather impressive defense of its Pac-10 title. Cal, meanwhile, just achieved its first Pac-10 victory last weekend. The Bears are hoping the 33-14 thrashing was more than just an escape from last place.

Our thanks to Sekou Sanyika and everyone who made this issue possible. Enjoy the game.

*Joe Eskenazi*  
 Joe Eskenazi

*Yash Mehta*  
 Yash Mehta

# He Did It His Way

Despite his detractors, Sekou Sanyika has become a defensive mainstay. BY ANIL PODDUTURI

He comes from a small town called Hercules, the bronzed bruiser who now hunkers beneath a pack of ravenous reporters. He wants to inhale the rest of his cold turkey sandwich, but such efforts are fruitless as the impending onslaught converges on his noon grubbing.

Lunch will have to wait. And that is fine because he knows turkey sandwiches and chips will not brighten this decidedly not-so-Kodak moment. Only the man himself can shake this media merry-go-round.

He carefully rewraps his sandwich and smiles respectively for the overhanging audience. The reporters, meanwhile, hound their prey like vultures prodding for scraps, each one swooping down to pose the same piddling question as his predecessor before him.

And despite the persistent hounding, Cal football player Sekou Sanyika endures.

He is cool and calm as he entertains the press room with generous grace, deliberating his responses even though every question ultimately reverts back to the same shallow routine:

*SEKOU my man!! Howzit hanging bud? What d'ya think will happen this weekend? You guys gonna win or what??*

Despite all the chumming, however, don't be fooled by this charade of intimacy: Sekou is not hanging with childhood pals Mike Prowell and Ed Lambert — the two extra brothers he never had, the buddies he's spent



Staff/Jesse Ehrman

**CAL LINEBACKER** Sekou Sanyika leads the Bears with 11 tackles behind the line of scrimmage.

both good and bad times for most of his life. They're the friends who, at the age of 14, both made the mature decision to join Sekou at a prestigious private boarding school two hours south of home, at Robert Louis Stevenson School in predominantly white Pebble Beach, Calif.

It was tough times at R.L. Stevenson, where Sekou and his two closest friends fought to defy the racial stereotypes that entrapped them from the first day they stepped onto this suburban campus.

Sound like a made-for-television

movie? Think again. This is what happens when three young men of African American descent — who just happen to play football — earn scholarships to a traditionally white school with a \$20,000 per year pricetag.

But those adversities seem worlds apart from the peaks and valleys Sekou has scaled to reach his current plateau. Today, Sekou has an opportunity not too many men his age can rival.

At the weekly Cal football press

See SANYIKA Page 7

## JOIN THE FUN!

**CAL FOOTBALL SPECIAL**  
 -Win or Lose!  
 -bring this ad and receive  
 \$5 off pool time  
 (min 1 hr play & after 7 pm)  
 not valid w/other offers

## WE'RE OPEN

- 20 POOL TABLES
- OUTDOOR PATIO
- LARGE BEER SELECTION
- VALIDATED PARKING (4 & 5TH STS)
- OPEN 2 PM DAILY
- CLOSE 2AM DAILY
- 21 & OVER PLEASE!



2367 Shattuck Avenue  
 Berkeley, CA 94704  
 510.848.1766  
 Fax: 510.848.1767  
 www.berkeleybilliards.com

**BERKELEY BILLIARDS**

COMPLIMENTARY SCREENING & MAIL ORDER VISION & INSURANCE PLANS LENS EXPRESS & KAISER MEMBERS WELCOME

**EXAM & 2 PAIR CONTACTS \$99**

WALK-INS & SAME DAY APPTS.

Se Habla Español

Free Parking

- GLASSES OR CONTACTS & EXAM ..... \$84
- CONTACTS, GLASSES & EXAM... all for only \$109
- EXAM & BIFOCALS ..... \$124

### SUNGLASSES GALORE:

FILA, GIVENCHY, POLO SPORT, TODD OLDHAM, RAY BAN, BOLLÉ, REVO, R, SWIM GOGGLES, OVER 6,000 FRAMES & LENSES IN STOCK: SAKI, MODO, RED ROSE, PRODESIGN, MIDORI, RALPH LAUREN, GUESS, SPORT SPECS...

Examination includes fitting, follow-up and guarantee. With this coupon thru 11/13/97. Restrictions apply.

Customize a Personal Eyecare Package. Call Today! Family & Group Plans Available

**Andrew M. Clay, O.D.P.C. Harlan Wong, O.D.**  
 843-4030 • 1-800-733-1312  
 ONE HOUR SERVICE  
 1928 Shattuck, Berkeley (3 blocks from BART) Mon-Sat 9am-6pm  
 Voted Best Eyecare Professional in Berkeley. Satisfaction Guaranteed.

# HI-TECH USA

## BEST PRICES IN TOWN!

BERKELEY STORE: 2316 Shattuck Ave. Phone: (510) 843-8688 Fax: (510) 843-8658

## COMPUTER SYSTEMS & COMPONENTS



SUPER SALE!		M/B CPU		HI-TECH USA SUPER MULTIMEDIA SYSTEMS		COMPUTER SYSTEMS & COMPONENTS	
PENTIUM II-300C (Intel Atlanta) ATX	206 968	32MB RAM (8MB ADD \$10)		144MB RAM COMB. ADD \$30		48MB RAM & TEAC 144MB FDD	
PENTIUM II-266C (Intel Atlanta) ATX	206 748	Teac 144MB 3.5" Floppy Drive		4.3GB HDD (4.3GB ADD \$70)		4.3GB HDD (4.3GB ADD \$70)	
PENTIUM II-233C (Intel Portland) ATX	198 728	4.3GB HDD (4.3GB ADD \$70)		Matrox Millennium II 4MB		Matrox Millennium II 4MB	
PENTIUM II-300C (ASUS M/B) ATX	206 948	Mid Tower Case w/Power Supply		Mid Tower Case w/Power Supply		Mid Tower Case w/Power Supply	
PENTIUM II-266C (ASUS M/B) ATX	206 728	Keyboard/Power Mouse		Keyboard/Power Mouse		Keyboard/Power Mouse	
DUAL PP-200C PCI (Intel Pentium) w/ICPU	398 858	24X CD-ROM		24X CD-ROM (24X ADD \$20)		24X CD-ROM (24X ADD \$20)	
PP-200C PCI (Intel Pentium) ATX	188 554	Creative Sound Blaster AWE64 Value or YAMAHA Sound		Creative Sound Blaster AWE64 Value or YAMAHA Sound		Creative Sound Blaster AWE64 Value or YAMAHA Sound	
MMX-P233/52K (Intel Pentium) ATX	182 478	58.8 Fax Modem w/Voice (Internet Ready) (US Robotics 56K ADD \$80)		58.8 Fax Modem w/Voice (Internet Ready) (US Robotics 56K ADD \$80)		58.8 Fax Modem w/Voice (Internet Ready) (US Robotics 56K ADD \$80)	
MMX-P200/52K (Intel Pentium) ATX	182 388	Free YAMAHA Stereo Speaker & CD Decks		Free YAMAHA Stereo Speaker & CD Decks		Free YAMAHA Stereo Speaker & CD Decks	
MMX-P166/52K (Intel Pentium) ATX	182 286	Free Microsoft Windows 95 & Mouse		Free Microsoft Windows 95 & Mouse		Free Microsoft Windows 95 & Mouse	
MMX-P233/52K (Super Micro TX)	128 448	Monitor Sold Separately (See Below)		Monitor Sold Separately (See Below)		Monitor Sold Separately (See Below)	
MMX-P200/52K (Super Micro TX)	128 358	PENTIUM II-300 (Intel Atlanta) ATX	\$1,948	PENTIUM II-300 (Intel Atlanta) ATX	\$1,948	PENTIUM II-300 (Intel Atlanta) ATX	\$1,948
MMX-P166/52K (Super Micro TX)	128 258	PENTIUM II-266 (Intel Atlanta) ATX	\$1,738	PENTIUM II-266 (Intel Atlanta) ATX	\$1,738	PENTIUM II-266 (Intel Atlanta) ATX	\$1,738
MMX-P233/52K (ASUS SP 97) (TX 97:65)	94 408	PENTIUM II-300 (ASUS M/B) ATX	\$1,938	PENTIUM II-300 (ASUS M/B) ATX	\$1,938	PENTIUM II-300 (ASUS M/B) ATX	\$1,938
MMX-P200/52K (ASUS SP 97) (TX 97:65)	94 328	PENTIUM II-266 (ASUS M/B) ATX	\$1,728	PENTIUM II-266 (ASUS M/B) ATX	\$1,728	PENTIUM II-266 (ASUS M/B) ATX	\$1,728
MMX-P166/52K (ASUS SP 97) (TX 97:65)	94 228	PENTIUM II-233 (Intel Portland) ATX	\$1,908	PENTIUM II-233 (Intel Portland) ATX	\$1,908	PENTIUM II-233 (Intel Portland) ATX	\$1,908
PS-150/52K PCI (ASUS SP 97)	94 188	DUAL PP-200/52K (Super Micro TX)	\$1,648	DUAL PP-200/52K (Super Micro TX)	\$1,648	DUAL PP-200/52K (Super Micro TX)	\$1,648
AMD K5-200/52K (Intel Triton TX)	88 258	MMX-P233/52K (Intel Pentium TX)	\$1,438	MMX-P233/52K (Intel Pentium TX)	\$1,438	MMX-P233/52K (Intel Pentium TX)	\$1,438
AMD K5-166/52K (Intel Triton TX)	88 178	MMX-P200/52K (Intel Pentium TX)	\$1,288	MMX-P200/52K (Intel Pentium TX)	\$1,288	MMX-P200/52K (Intel Pentium TX)	\$1,288
CYRIX M2-200/52K (Intel Triton TX)	88 218	MMX-P166/52K (Super Micro TX)	\$1,188	MMX-P166/52K (Super Micro TX)	\$1,188	MMX-P166/52K (Super Micro TX)	\$1,188
CYRIX M2-166/52K (Intel Triton TX)	88 178	MMX-P233/52K (Intel Pentium TX)	\$1,308	MMX-P233/52K (Intel Pentium TX)	\$1,308	MMX-P233/52K (Intel Pentium TX)	\$1,308
MMX-P233/52K (Intel Triton TX)	88 398	MMX-P200/52K (Intel Pentium TX)	\$1,278	MMX-P200/52K (Intel Pentium TX)	\$1,278	MMX-P200/52K (Intel Pentium TX)	\$1,278
MMX-P166/52K (Intel Triton TX)	88 298	MMX-P166/52K (Intel Pentium TX)	\$1,178	MMX-P166/52K (Intel Pentium TX)	\$1,178	MMX-P166/52K (Intel Pentium TX)	\$1,178
PS-166C PCI (Intel Triton VX)	68 196	UPGRADE		UPGRADE		UPGRADE	
PS-150C PCI (Intel Triton VX)	68 154	Microsoft Office Pro 95 (W/3.5")	Add \$188	Microsoft Office Pro 95 (W/3.5")	Add \$188	Microsoft Office Pro 95 (W/3.5")	Add \$188
PS-133C PCI (SS)	48 138	30 Bit Flatbed Scanner (W/3.5")	Only \$98	30 Bit Flatbed Scanner (W/3.5")	Only \$98	30 Bit Flatbed Scanner (W/3.5")	Only \$98
6X86-P200+/512 PCI (Intel Triton VX)	88 158	PENTIUM II-300 ONLY \$1,948		PENTIUM II-300 ONLY \$1,948		PENTIUM II-300 ONLY \$1,948	
6X86-P166+PCI (Intel Triton VX)	68 134	BUSINESS LEASE \$89/MO.		BUSINESS LEASE \$89/MO.		BUSINESS LEASE \$89/MO.	
486DX4-100C PCI-VLB	58 96						

SIMM MEMORY & CPU		VGA CARDS		MONITORS		MULTIMEDIA	
8MB/4MB (20Pin)	\$8/\$15	SVGA 8MB ISA	\$28	14" VGA MON	\$38	30-BIT FLATBED PRINTER PORT SCANNER	\$18
4MB/8MB/16MB/32MB (72Pin)	\$13/\$20/\$30/\$41	PCI OR VLB W/MS	\$18/\$23	17" 1280 1024 28 IN	\$142/\$208	30-BIT PMP/70 SOUND CARD	\$55/\$78
4MB/8MB/16MB/32MB (EDO)	\$12/\$18/\$26/\$37	32VIRGE 2MB	\$35	17" 1280 1024 28 IN	\$308		
32MB/64MB DIMM	\$30/\$35	MAATROX	\$48	IMPRESSION W/75" 10"	\$151/\$222/\$410	CREATIVE SOUND BLASTER	\$42/\$72/\$77
6X86 166+/200+	\$88/\$124	MILLENNIUM PCI 2MB (RETAL)	\$128	MAG/DJ530/10V/DJ702	\$264/\$458/\$510	16/32/AWE64 (BLK) (BLK)	\$158/\$176
AMD K5-166/200/233	\$70/\$88/\$98	MILLENNIUM PCI 2MB (BLK)	\$122	NAMAD FX-85 15" 17-1725 17"	\$493/\$556	AWE64 GOLD (BLK) (RETAL)	\$158/\$176
Intel Pentium 150/166/200	\$98/\$130/\$178	MYSTIQUE 220 4MB (RETAL)	\$108	NEC A500/E500/A500	\$348/\$368/\$378	CREATIVE 16X UPGRADE KIT	\$248
Intel MMX-P166/P200/P233	\$100/\$122/\$138	MYSTIQUE 220 4MB (BLK)	\$98/\$108	NEC A700/M700/P750	\$618/\$738/\$778	YAMAHA M7/MRS SPEAKERS	\$368/\$44
Intel Pentium P-100/200	\$108/\$148	MILLENNIUM II 4MB (BLK)	\$128	NEC XV17+/E100	\$648/\$708	SPEAKERS 80W/100W/200W	\$12/\$24/\$44
Intel Pentium P-233/266	\$148/\$198	MILLENNIUM II 8MB (RETAL)	\$148	PRINCETON 15" 17"	\$278/\$458	CD ROMS	\$52/\$57/\$58
Intel Pentium P-300	\$178	ATI	\$52	SONY 1005X (15" 17" 2005X117)	\$648/\$934	CD ROM 6X/12X/16X IDE	\$52/\$57/\$58
		3D XPRESSION 2MB EDO	\$52	WINMODEM 28.8 INT	\$48/\$58	CD ROM 6X/12X/16X IDE	\$52/\$57/\$58
		3D XPRESSION + W/TV 2MB/4MB	\$65/\$82	FAX MODEM 33.6 W/VOICE INT/EXT	\$44/\$57	CD ROM 6X/12X/16X IDE	\$52/\$57/\$58
		3D XPRESSION + W/TV 2MB/4MB	\$78/\$94	FAX MODEM 33.6 W/VOICE INT/EXT	\$44/\$57	CD ROM 6X/12X/16X IDE	\$52/\$57/\$58
		PRO TURBO 4MB/8MB SGRAM	\$128/\$168	FAX MODEM 56K W/VOICE INT	\$84	CD ROM 6X/12X/16X IDE	\$52/\$57/\$58
		XPRT W/WORK AGP 4MB/8MB	\$178/\$214	PCMCIA FAX MODEM 33.6/56.6	\$94/\$104	CD ROM 6X/12X/16X IDE	\$52/\$57/\$58
		DIAMOND	\$28/\$45	USB PROBO/TCS	\$54	CD ROM 6X/12X/16X IDE	\$52/\$57/\$58
		EDGE 3D 2MB (DRAM) (VIRAM)	\$28/\$45			CD ROM 6X/12X/16X IDE	\$52/\$57/\$58
		STEALTH 16 PCI 2MB (DRAM)	\$52/\$72			CD ROM 6X/12X/16X IDE	\$52/\$57/\$58
		STEALTH 3D 2000 2MB/4MB (DRAM)	\$52/\$72			CD ROM 6X/12X/16X IDE	\$52/\$57/\$58
		STEALTH 3D 3000 2MB/4MB (DRAM)	\$97/\$127			CD ROM 6X/12X/16X IDE	\$52/\$57/\$58
		STEALTH 16 PCI 2MB (DRAM)	\$84/\$128			CD ROM 6X/12X/16X IDE	\$52/\$57/\$58
		STEALTH 16 PCI 4MB (DRAM)	\$104/\$154			CD ROM 6X/12X/16X IDE	\$52/\$57/\$58
		FIRE GL 1000 4MB (DRAM)	\$104/\$154			CD ROM 6X/12X/16X IDE	\$52/\$57/\$58
		FIRE GL 1000 PRO 4MB (DRAM)	\$104/\$154			CD ROM 6X/12X/16X IDE	\$52/\$57/\$58
		VPER V330 AGP 4MB	\$82			CD ROM 6X/12X/16X IDE	\$52/\$57/\$58
						CD ROM 6X/12X/16X IDE	\$52/\$57/\$58

BERKELEY Tel: (510) 843-8688 Fax: (510) 843-8658 SAN FRANCISCO Tel: (415) 753-6888 Fax: (415) 753-6846  
 MENLO PARK Tel: (415) 329-8688 Fax: (415) 329-8680 SUNNYVALE Tel: (408) 732-8688 Fax: (408) 732-9388  
 MILPITAS Tel: (408) 262-8688 Fax: (408) 262-8772

# Peering At The Crystal Bowl

Four teams have shot at Rose Bowl. BY YASH MEHTA

Every year, overzealous Pac-10 fans conjure equally overzealous notions about going to a bowl game. Aided by the perennial proclamation by conference pundits that "this may be the tightest race yet," and armed with phrases like "run the table," every team somehow manages to find its way in an array of "what if" scenarios.

With only three games remaining in the 1997 schedule, this may be the year that warrants such enthusiasm. Four Pac-10 teams still have a shot at the Rose Bowl and every conference squad has an opportunity — albeit slim in some cases — to make some sort of postseason appearance.

Washington, Washington State, UCLA and Arizona State may all be Pasadena-bound if things go their way. The Huskies have the confidence of knowing if they "run" the proverbial "table" — which means "winning the rest of their games" in laymen's terms — they could end up No. 1 in the conference.

The scenario makes for a potentially critical Apple Cup matchup when UW and WSU square off Nov. 22 in Husky Stadium.

While Washington (7-1, 5-0 in the Pac-10) sits atop the standings now, it also possesses the toughest schedule ahead — home games vs. Oregon and WSU and a road contest at UCLA.

WSU, UCLA and ASU don't have the luxury of just winning the rest of their games — all three need outside help to emerge as conference cham-

## Pac-10 Standings

Team	Conference Games		All Games	
	W	L	W	L
1. Washington	5	0	7	1
2. Washington State	5	1	7	1
UCLA	5	1	7	2
4. Arizona State	4	1	6	2
5. Stanford	2	3	4	4
USC	2	3	4	4
7. Oregon	1	4	4	4
Arizona	1	4	3	5
California	1	4	3	5
10. Oregon State	0	5	3	5

See BOWLS Page 8

BUY YOUR CLASS RING FROM A

**REAL JEWELER!**

We guarantee BEST PRICE, BEST QUALITY and FAST SERVICE. Many of our rings are available for same day delivery. Better designs, custom work available and... YOU DON'T HAVE TO WAIT FOR A SALE!!



Come In and see what we can do for you. **LIFETIME WARRANTY!**

THE ASUC JEWELRY STORE/BRONZE, SILVER & GOLD  
Located in the ASUC Store  
(510) 642-1175

University Special!  
**35% OFF** (with this coupon)  
**Any Body Work**

- WE'LL ALSO HELP YOU ON ANY INSURANCE JOB:
- Free Towing From Anywhere in California
- Free loaner while Your Car is Being Repaired
- We'll Work With You on Your Deductible



Pinnacle Auto Body & Paint  
2285 San Pablo Ave.  
Berkeley, CA 94704-3300

### CARAVAN CROSSING IMPORTS

A UNIQUE ORIENTAL RUG STORE

Rugs from China, Iran, Turkey, India, Pakistan & Afghanistan. Unique home furnishings & artifacts from Indonesia & India.

**GOING OUT OF CARPET BUSINESS SALE**  
**EVERYTHING MUST GO**

**50% to 75% OFF**  
**ALL RUG INVENTORY STOREWIDE**

HOURS: Tuesday thru Saturday 11-6 • Sunday 12-5  
2956 College Ave at Ashby Berkeley, CA (510) 549-1020



### University Students' Cooperative Association

Inexpensive housing  
Democratically run  
Close to campus

\$1893 per semester for Room and Board

2424 Ridge Road  
Berkeley, CA 94709

tel: 510 848-1936  
fax: 510 848-2114

www.uscaberkeley.org

SPRING HOUSING

Alan Abruzzo Design



BANCROFT CAFE

foot Locker



**Go Bears!**

Bath & Body Works

FROM  
*The Granada*  
at  
*Sather Gate*



Sunglass Attitudes

PRESTO PRINTS

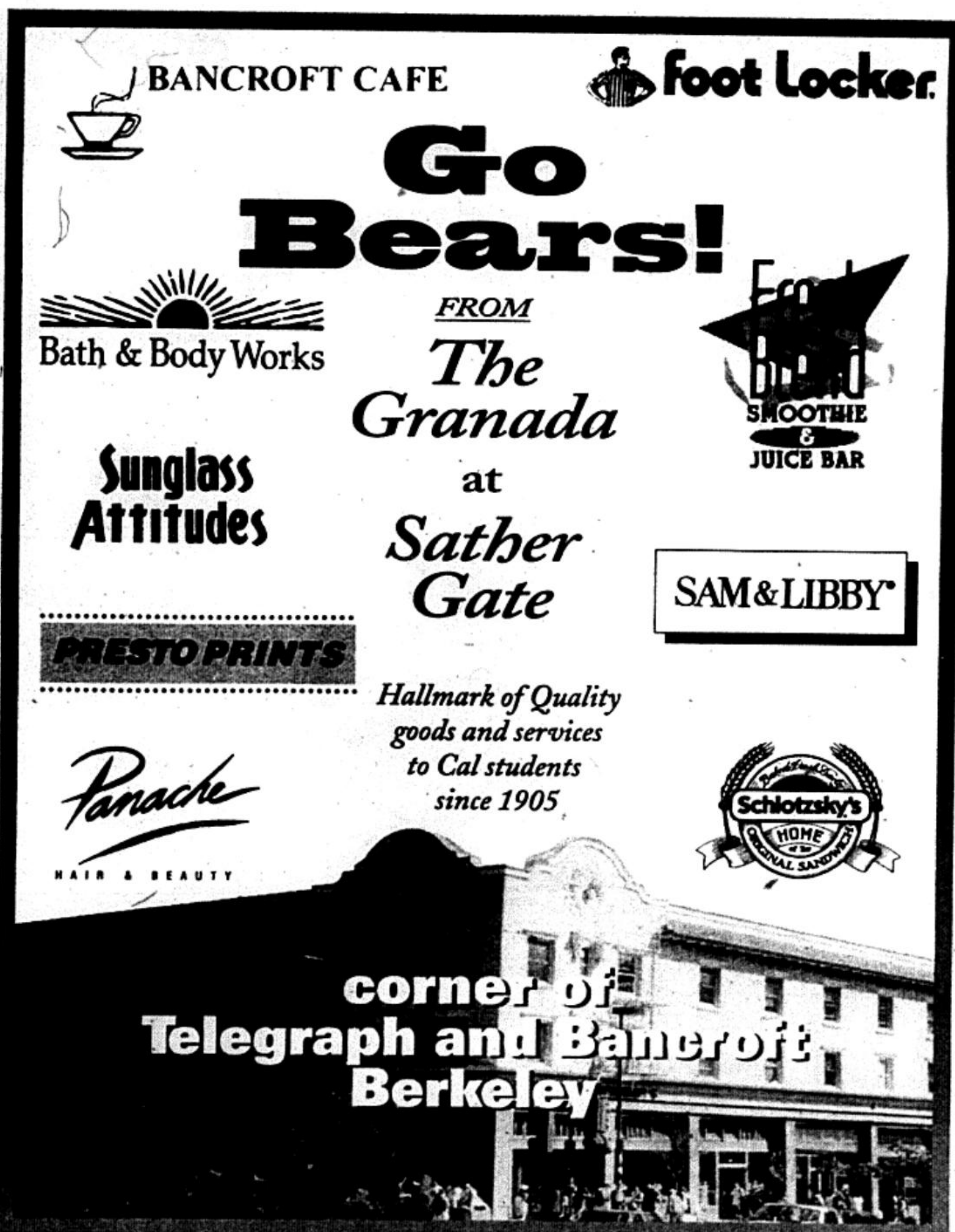
Panache  
HAIR & BEAUTY

Hallmark of Quality goods and services to Cal students since 1905

SAM & LIBBY



corner of  
**Telegraph and Bancroft**  
**Berkeley**



## ASU OUTLOOK

Defending Pac-10 champion Arizona State was the nation's surprise team a year ago, but the Sun Devils' 1997 campaign has been even more remarkable in some regards.

After winning national Coach of the Year honors for guiding ASU to an undefeated regular season, former Cal coach Bruce Snyder lost a ton of talented players — a list that includes quarterback Jake Plummer, wide receiver Keith Poole, tailback Terry Battle and defensive end Derrick Rodgers.

Through eight games, the 15th-ranked Devils haven't experienced the drop-off many expected would befall them. With a freshman quarterback and a good number of first-year starters, they've lost just once in conference play — an Oct. 4 defeat to Washington in Seattle. Last weekend, they knocked off undefeated Washington State, 44-31, in a huge upset.

ASU has three games to go, all against sub-.500 opponents, meaning the Devils still have a good shot at returning to the top 10 and defending their Pac-10 title.

The Fiesta Bowl is also talking about offering them an at-large alliance bid. Whatever the postseason destination, Snyder's young team is primed to succeed for some time to come.

**OFFENSE:** Redshirt freshman Ryan Kealy won the starting quarterback job before the season and has performed like a veteran so far. His emergence following an amazing senior year by local hero Plummer bodes well for ASU's future.

Kealy is currently one of the hottest QBs in the conference, racking up 721 yards and seven touchdowns in his last three games.

With a potent tailback combo, the Devils' backfield is perhaps their most dangerous weapon. Senior tailback Michael Martin came back this season from a career-threatening neck injury and leads all rushers with 588 yards. Speedy sophomore J.R. Redmond (83.3 yards per game) also must be contained.

Junior Lenzie Jackson is Kealy's favorite wideout target. The receiver had a career-high nine catches for 89 yards last week against WSU. Kendrick Bates is second in the Pac-10 among tight ends with his 20 catches and 277 yards.

**DEFENSE:** Arizona State was one of the most dominating defensive teams in the country last season,



**Nickname:** Sun Devils

**Colors:** Maroon and Gold

**Coach:** Bruce Snyder (38-26), 6th year

**Current Record:** 6-2 (4-1 in the Pac-10)

**Key Returners:** FS Mitchell Freedman, WR Lenzie Jackson, TB Mike Martin, LG Kyle Murphy, PK Robert Nycz, TB J.R. Redmond, LB Pat Tillman

**Key Newcomers:** QB Ryan Kealy, RG Victor Leyva, LT Marvel Smith, LB Stephen Trejo

leading the Pac-10 in almost all defensive categories. The mighty haven't fallen too far, as ASU ranks second in the conference in total defense behind only first-place Washington.

Only two teams have completed more than 50 percent of their passes against the Sun Devils' secondary — this in a conference with three of the country's top five signal callers. WSU's Ryan Leaf did torch ASU for 447 yards last week, but he fumbled twice in the fourth quarter — one of them forced by junior free safety Mitchell Freedman.

Outside linebacker Pat Tillman is ASU's most explosive defender. The senior leads the team with 58 tackles, 11 of them behind the line of scrimmage. He also has three sacks and has picked off three passes.

Strong safety Damien Richardson is second on the team with 54 tackles. **SPECIAL TEAMS:** Senior kicker Robert Nycz is as solid as they come. He has made 88 straight extra points and 114 out of 115 in his career. Nycz has a career 70 percent field goal mark and rarely misses from inside the 40.

Punter Marcus Williams is averaging 43.6 yards per kick, good for 24th in the nation. The Devils are terrific on the other side of the kicks as well — they have blocked two field goals this season and at least one punt in five of their last 10 games.

**OUTLOOK:** Arizona State dominated Cal last season in Tempe, 35-7, to clinch a Rose Bowl berth. While this may not be their year to return to Pasadena, the Sun Devils have made great strides to remain a standout football team.

The Devils are still better than the Bears in all areas. Unless there is a huge letdown from the Washington State game, the rest of their contests shouldn't be too much trouble.

— Jeremy Sampson



### BRUCE SNYDER

**Career Record:** 106-87-5 (18th season)

**Record at Asu:** 38-26 (6th season)

**Record against Cal:** 4-1

'We're young, and still mature'

— Bruce Snyder  
ASU head coach



**AFTER A SEASON** of frustrations, Cal tailback Tarik Smith (34) broke carries. Paired with freshman sensation Marcus Fields, the team's leading

### SCHEDULE

8/30	NEW MEXICO STATE	41-10
9/13	at Miami	23-12
9/20	BYU	10-13
10/4	at Washington	14-26
10/11	USC	35-7
11/1	WASHINGTON STATE	44-31
11/8	at Cal	Today
11/15	OREGON	7:00 p.m.
11/22	ARIZONA	4:30 p.m.

### WHEN ASU HAS THE BALL

OFFENSE		DEFENSE	
WR	83 Lenzie Jackson X	RC	31 Derrick Gardner
	84 Terry McDonald	DE	58 Marquis Tugberonyoh
LT	70 Marvel Smith X	OLB	13 Sekou Sanyika
	51 Grey Ruesgarner	SS	11 Andre Rhodes
LG	56 Kyle Murphy X	DT	46 Brandon Whiting
	63 Corey Ramsey	ILB	59 Matt Beck
C	51 Grey Ruesgarner X	NT	56 Jerry DeLoach
RG	75 Victor Leyva X	DE	73 Andre Carter
	76 Mike Brown	FS	20 Pete Dastefano
RT	70 Glen Gable X	LC	25 Chidi Iruoma
TE	85 Kendrick Bates X		
	88 Matt Carcone		
WR	81 Kenny Mitchell X		
	2 Craig Spann		
TB	29 Mike Martin X		
	21 J.R. Redmond		
QB	8 Ryan Kealy X		
	7 Steve Campbell		
FB	44 Jeff Paulk X		
	35 Darrin Hancock		

### ASU OFFENSE

Avg. points scored	26.4
Avg. rush yards gained	179.9
Avg. pass yards gained	207.4

### CAL DEFENSE

Avg. points allowed	31.1
Avg. rush yards allowed	142.6
Avg. pass yards allowed	231.9

### SPECIAL TEAMS ASU



P	18 Marcus Williams
PK	41 Robert Nycz
KO	18 Marcus Williams
HOLD	8 Ryan Kealy
SNP	87 Brian Jennings
	77 Jeff Johannesen
PR	21 J.R. Redmond
KOR	21 J.R. Redmond
	4 Marlon Farlow



**ASU WIDEOUT**  
Lenzie Jackson is the top receiver in a balanced Sun Devils offense.

Photos Courtesy ASU Media Relations

## LAITRON

2113 University Ave.  
Berkeley, CA. 94704  
Phone: (510) 647-1777  
Fax: (510) 647-1333  
7 Bay Area Stores to Serve You

## TWIN 56K

Int. Fax/Modem

-Fast 56K Baud  
-Rockwell Chipset  
-Retail Box

**\$65**



Chembook 6800  
-200 MHz w/MMX  
-32MB Video  
-12.1 DSTN

**\$2199**

## iiyama



**\$615**

## VISIONMASTER

9017-E 17" Monitor  
-17" (15.9 View)  
-25DP  
-3 Year Warranty

**PC WORLD**  
BUY

**CAL OUTLOOK**

After snapping a five-game losing streak with last week's win over Oregon State, the Bears take the field against Arizona State, their fourth top-15 opponent in the past month.

Cal will need a huge effort to pull off an upset of the No. 15 Sun Devils, who arrive in Berkeley having won nine of their last 10 road games.

**OFFENSE:** A revamped offensive line helped the Bears put together one of their most balanced offensive performances of the year in last week's win.

Jeremy Newberry, an All-America candidate at center, shifted to left guard vs. Oregon State while Caleb Brown was inserted at center.

The move paid off as Cal rolled up 208 yards on the ground and another 215 through the air. The Bears will stick with the same lineup for Saturday's game.

"You saw some things we did at guard with Jeremy that we couldn't do earlier in the year," Cal head coach Tom Holmoe said.

Senior wide receiver Bobby Shaw is one catch away from tying Brian Treggs' school record of 167 career catches. He should pass that mark early on against the Sun Devils.

Although the wideout was slowed last week by bruised ribs suffered against UCLA, the Bears received a big effort from fellow starter Dameane Douglas, who hauled in two touchdowns from quarterback Justin Vedder against OSU.

**DEFENSE:** The Bears line up against the Pac-10's No. 1 rushing offense in ASU. Cal has defended against its share of high-powered passing attacks already this season, so the Sun Devils offer a change of pace with tailbacks Michael Martin and J.R. Redmond.

Cal rebounded with a nice defensive effort against the Beavers last week, limiting OSU to 207 total yards.

"It was a good start to a turnaround," Holmoe said. "But turnarounds happen over a matter of weeks."

The Bears benefited last week from the return of linebacker and defensive leader Matt Beck while they welcomed a new starter into the defensive backfield, redshirt freshman Chidi Iwuoma. If his thigh bruise is healed, Iwuoma gets the start again this week over Kato Serwanga.

**SPECIAL TEAMS:** Junior Tim Wolleck gets his first shot as Cal's kicker on Saturday. The transfer from Moorpark Junior College takes the place of sophomore Ignacio Brache.

"We think he deserves an opportunity," Holmoe said of Wolleck. "It's time to make that change."

**OUTLOOK:** Last year, Arizona State used a 35-7 win over the Bears to clinch a berth in the Rose Bowl in front of its home crowd.

Though this game doesn't hold the same importance, Cal fans may also find reason to tear down the goalposts if the Bears pull off a win.

ASU is on a big roll right now and is the clear favorite going into Saturday's game. The Bears got a morale boost with last week's win but are still looking for the big victory that could salvage this season.

— Joe Stiglich



**Nickname:** Golden Bears

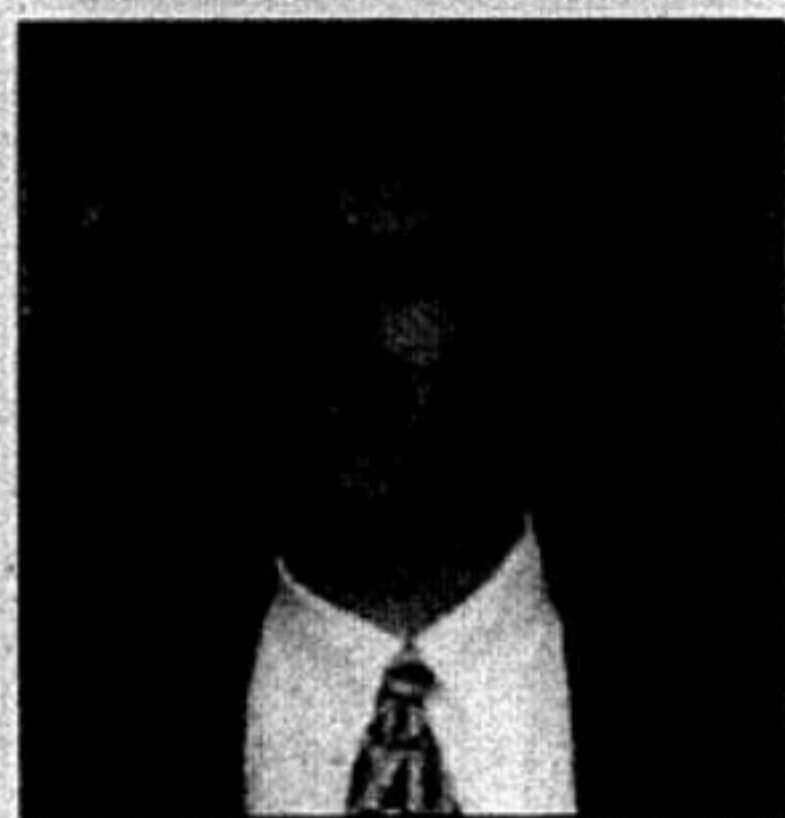
**Colors:** Blue and Gold

**Coach:** Tom Holmoe (3-5), first year

**Current Record:** 3-5 (1-4 in the Pac-10)

**Key Returners:** ILB Matt Beck, C Jeremy Newberry, CB Kato Serwanga, WR Bobby Shaw, TB Tarik Smith, DT Brandon Whiting

**Key Newcomers:** DE Andre Carter, LB Albert Dorsey, TB Marcus Fields, NT James Gibson, DE John McLaughlin, QB Justin Vedder, FB Joshua White



**TOM HOLMOE**

**Career Record:** 3-5-0 (1st season)

**Record at Cal:** 3-5-0 (1st season)

**Record against ASU:** 0-0

'We have an outside chance at a 6-5 season.'

— Tom Holmoe  
Cal head coach

**SCHEDULE**

9/6	at Houston	35-3
9/20	OKLAHOMA	40-36
9/27	USC	17-27
10/4	at Louisiana Tech	34-41
10/11	WASHINGTON	3-30
10/18	at Washington State	37-63
10/25	at UCLA	17-35
11/1	OREGON STATE	33-15
11/8	ARIZONA STATE	Today
11/15	at Arizona	6:00 p.m.
11/22	at Stanford	12:30 p.m.

**WHEN CAL HAS THE BALL**

<b>WR</b>		<b>RE</b>		<b>DEFENSE</b>	
34 Tarik Smith	64 John Welbourn	23 Courtney Jackson	3 J. Juan Cherry	39 Damien Richardson	31 Christian France
4 Marcus Fields	62 Jeremy Newberry	98 Vince Amey	91 Quincy Yancy	37 Paul Reynolds	86 Joe Costa
	75 Tobe McCullister	25 Larry Johnson	30 Stephen Trejo		
	63 Caleb Brown	97 Albery Battle	37 Pat Tillman		
	62 Jeremy Newberry	92 Jeremy Staat	95 Ryan Robby		
	55 Yauger Williams	48 Hamilton Mee	88 Derrick Ford		
	78 Kevin Smith	10 Jason Simmons	3 J. Juan Cherry		
	65 Brian Shields				
	79 Kameron Shuler				
	87 Brian Surgener				
	88 Hood Stahl				
	3 Bobby Shaw				
	83 Bruce Piere				

**CAL**

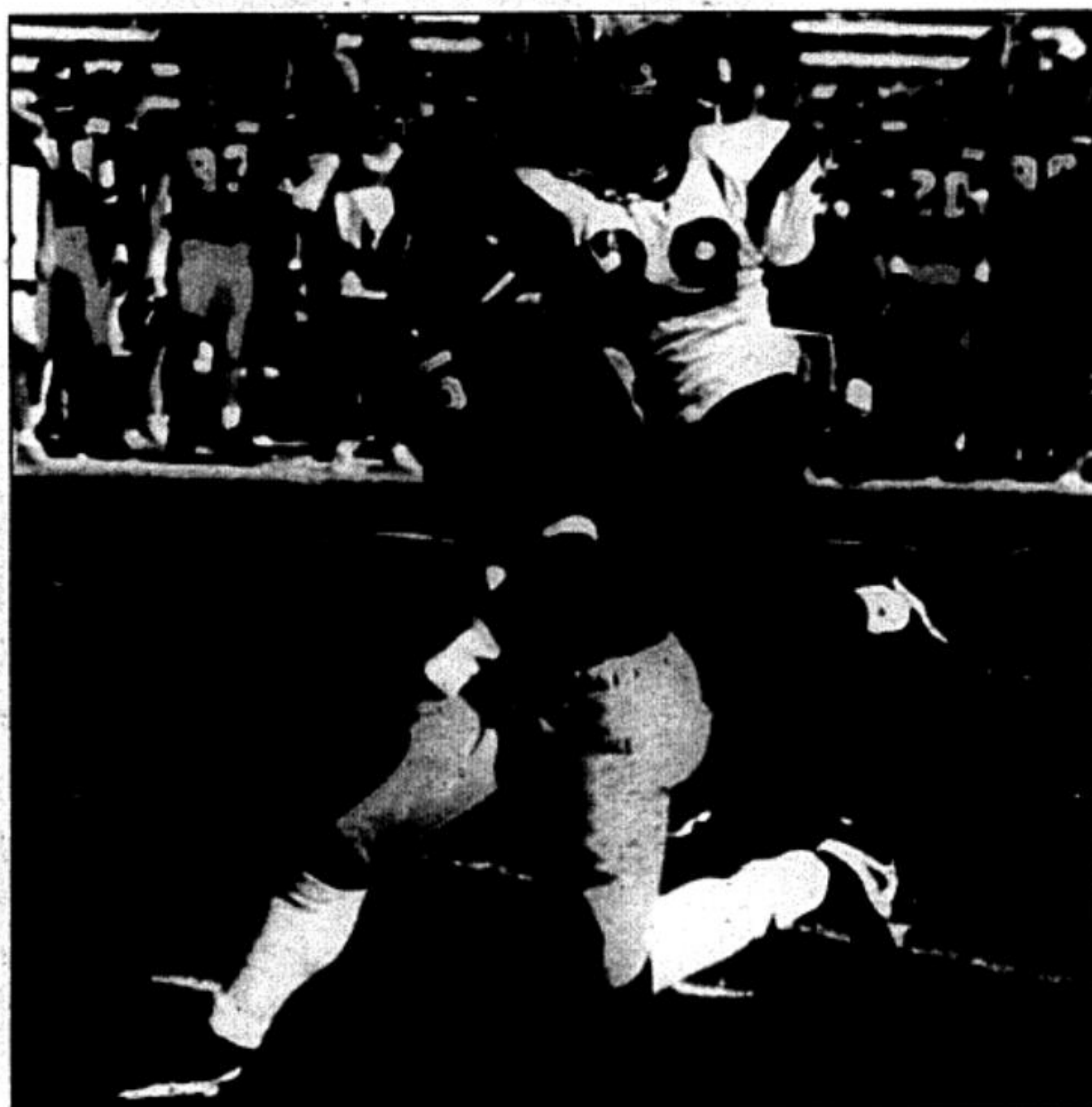
P	89 Nick Harris
PK	29 Tim Wolleck
KO	29 Tim Wolleck
HOLD	3 Bobby Shaw
SNAP	87 Brian Surgener
	62 Jeremy Newberry
PR	3 Bobby Shaw
	8 Deltha O'Neal
KOR	8 Deltha O'Neal

**CAL OFFENSE**

Avg. points scored	27.0
Avg. rush yards gained	148.8
Avg. pass yards gained	263.9

**ASU DEFENSE**

Avg. points allowed	15.4
Avg. rush yards allowed	101.6
Avg. pass yards allowed	216.8



Staff/Jesse Ehrman

**DAMEANE DOUGLAS** turned in his best effort of the season last week, hauling in five catches for 85 yards and two touchdowns.

**initio** ULTRA-WIDE

-40 MB/sec Transfers  
-Drivers for NT, Novell, Win 95  
-5 Year Warranty

**\$89**

Berkeley Store Only

**Microsoft**

MS Mouse ps/2.....\$21  
MS Intellimouse.....\$29  
MS NT 4.0 WS CD.....\$21  
MS Windows 95.....\$99  
MS Works 95.....\$35

**IBM** Ultra Wide

-4.3GB UW HD  
-5400RPM

**\$349**

**Stellar Series**

-Asus SP97-V w/512K  
-Intel 200MHz w/MMX  
-32 MB EDO RAM  
-WD 3.2GB UDMA HD  
-Diamond 2500 2MB  
-24X CD ROM  
-16-bit Sound

-56K Int. Fax Modem  
-1.44 Floppy, mouse  
-Speakers, keyboard  
-Mini case, Win 95

**\$999**

Who? will make a statement next?

Cashback Bonus<sup>®</sup> award\*

It could be **you** if you call  
**1-800 IT PAYS TO**  
and apply  
for a Discover<sup>®</sup> Card

DIESEL.....

TOWER RECORDS.....

NORTHWEST AIRLINES.....

THE SHARPER IMAGE.....

Cash Advance.....

it pays



Accepted where you see the Discover Sign

## Sanyika

FROM PAGE 2  
 luncheon at Memorial Stadium, Sekou — a bonecrushing linebacker who along with sophomore teammate Matt Beck is expected to spearhead a talented Bears defensive for years to come — is on hand to fend off the media inquisition.

He handles this situation as graciously as possible because he knows this is another opportunity for him to show character, honesty and integrity.

This is another opportunity to be a hero, another chance to be himself. Perhaps this is why he endures.

Sometimes it is hard to believe Sekou is only a teenager. While the 19-year old linebacker is somewhat undersized for his position — tipping the scales at a lean 230 pounds — it's easy to see why his coaches believe he will reach even more robust proportions in upcoming seasons.

And if this guy's going to get bigger and badder, opposing teams better be warned. Sekou has put together an impressive season this year, regarded by many as a breakthrough year in just his second full stint with the Bears. Through seven games, the Bears' emerging defensive demon has racked up 11 tackles for 46 yards in total lost yardage.

And he's getting bigger. Just look at those biceps. You can call them arm muscles, but they seem more like oil drums. His arms burst from his makeshift tanktop like the thick limbs of a redwood tree. And suddenly it hits you, Sekou is no kid. Sekou is huge.

But how did a kid like Sekou, whose collegiate potential was not realized until his senior season at R.L. Stevenson, ever rise to this level. Sekou forged his own bridges, made his own choices, and followed up his ambitions with a solid work ethic.

Is it any wonder that Sekou's

favorite professional athlete is the great San Francisco 49er Jerry Rice, whose legendary five-hour daily workouts have made him the best player to ever play his position?

Sekou's drive for success should be acknowledged as well.

The decision to leave home for R.L. Stevenson was clearly a difficult one. But Sekou wanted to succeed and the pilgrimage down south was worth the impending trouble. His father, Mtangulizi was against the boarding school, but had Sekou not attended R.L. Stevenson, who knows if he would have ended up at Cal?

"We all knew it was a great opportunity for us that we really couldn't pass up," recalls Sekou. "We went and it worked out well for all of us. The school had great people who really pushed us in the college direction. We also had a great football coach who marketed us well to recruiters. At the public school at home, I could see people not really being successful coming out of that high school."

Surviving the racial tension at the school was an equally daunting task. During the three years he spent at the school, Sekou and his friends helped bring a new cultural awareness to the R.L. Stevenson community by spearheading different campus programs designed to open eyes to a new reality.

They forced the school to celebrate Martin Luther King Day when Sekou and his friends arranged for their recently deceased pastor, Eugene Forlow, to come speak to the R.L. Stevenson student body during an unprecedented assembly.

Still though all the trials and successes, there was still the racism and altercations with insensitive students. Sekou did his best to cope and disprove the stereotypes, earning a 3.72 GPA at the school which ranks in the top 25 nationally for high school academics.

See SANYIKA Page 8

# Pre-Game Festivities

For All Home Football Games This Year:  
 From 11:30 am until Game Time all Pitches of Beer are \$8.50



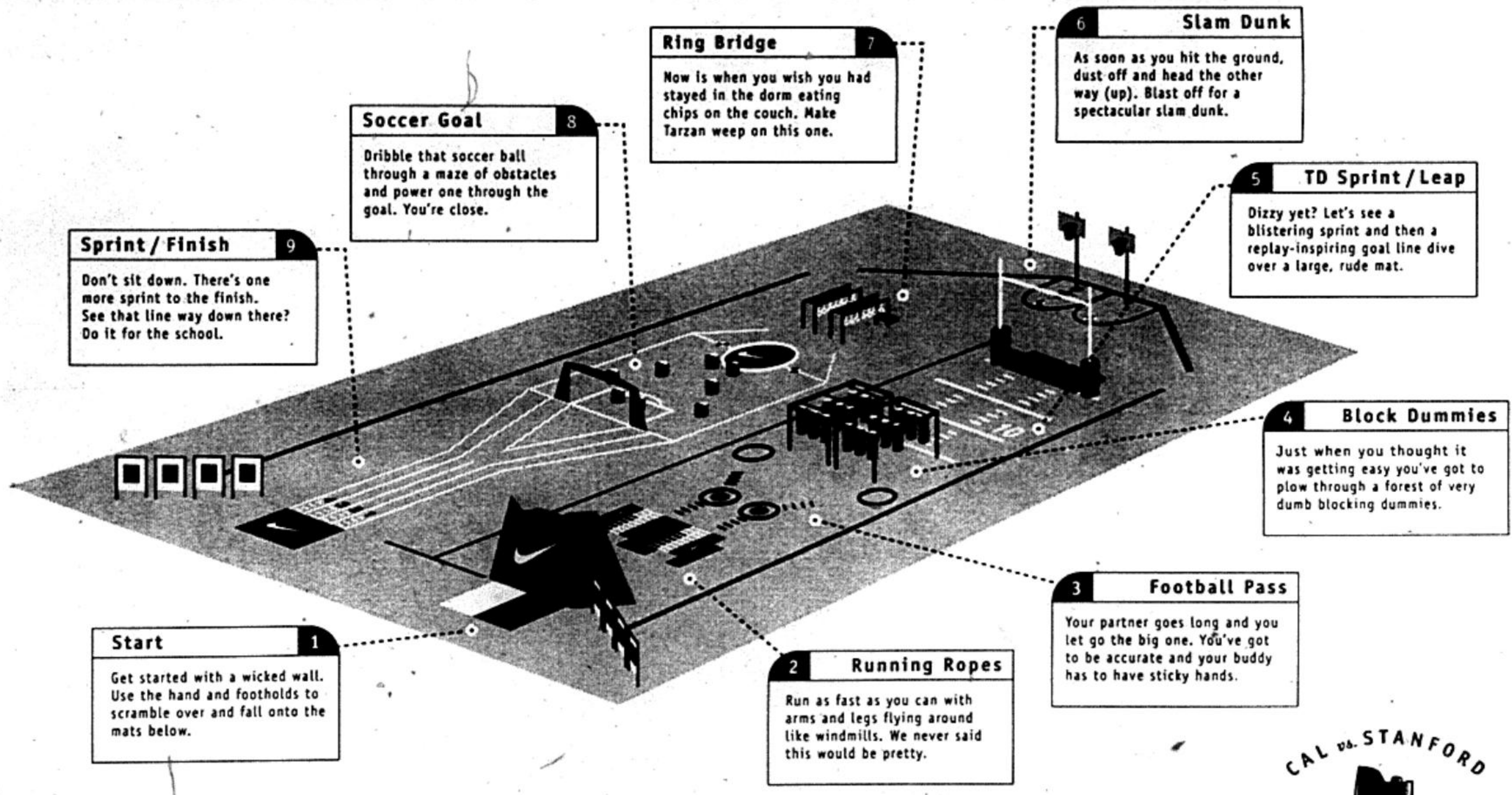
## TRIPLE ROCK

### BREWERY & ALEHOUSE

1920 Shattuck Ave. • Berkeley • 843-2739

Call Our Info Line: 843 7625 (THE ROCK) • WWW: <http://triplerock.com>

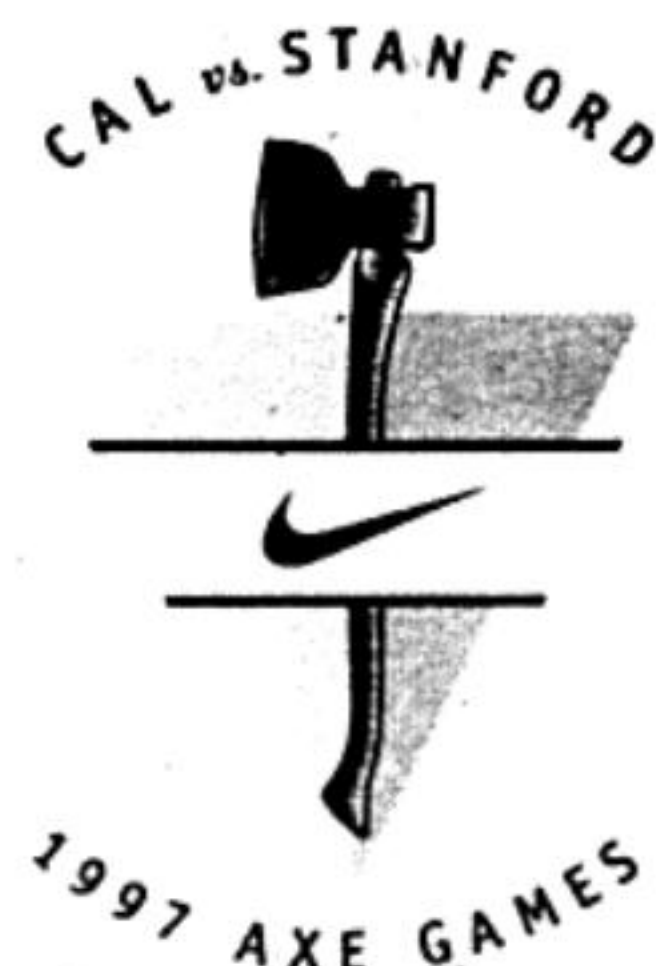
# THE BIG GAME BEGINS HERE!



Don't wait for the Big Game. Now's the time to find a friend, form a team and kick some Stanford butt. It's fun; it's wild; it's the Nike Axe Games, a timed obstacle course for teams of two. Men's, women's and coed divisions. Grab this chance to win the axe for Cal. First, you have to beat the best here. Then the top five

teams in each division will get to whip the "best" from Stanford — and get Nike prizes and free tickets to the Big Game. Winners of the final get to bring the axe trophy home. No need to sign up, just show up early early (spots fill up fast.) For info call 643-6822.

CALIFORNIA PRELIMINARIES  
 12-4 PM, FRIDAY, NOV. 14  
 HEARST NORTH FIELD  
 CHAMPIONSHIP FINAL  
 9:30 AM, SATURDAY, NOV. 22  
 ANGELL FIELD, STANFORD



# Bowls

FROM PAGE 3  
pions.

Washington State (7-1, 5-1) may gain its first conference title since 1931 if it sweeps its Pac-10 games against Stanford and Washington. WSU must hope that ASU loses, though, since the Sun Devils possess the edge in head-to-head competition.

After an 0-2 start, the Bruins (7-2, 5-1) have compiled an impressive league record. They have a chance to gain ground with a UW matchup at home before facing crosstown rival USC.

If UCLA prevails in both contests, it could still lose out to WSU if the Cougars beat the Huskies in the final game of the year. A loss to Washington virtually ends all Rose Bowl hopes for the Bruins.

Meanwhile, defending Pac-10 champions Arizona State aided its chances for the title by upsetting Washington State, 44-31, last weekend. Of the four schools in contention, Bruce Snyder's Sun Devils have the easiest remaining schedule with Cal, Oregon and Arizona left on tap.

If the Sun Devils sweep their three contests, it would take two Huskies losses for ASU to win the conference. Another scenario is if UW falls to UCLA but defeats WSU. In that case, the Bruins would get the league crown provided they win all their games.

Finally, if just ASU and UCLA are at the top of the pack, an extensive tie-breaker system would be implemented. The two don't square off this year, so a head-to-head tie-breaker doesn't work. Also, both teams would finish the season with the same overall record — another futile determining factor. The ruling would rest on who has not played in the Rose Bowl for the longest period of time, which would give UCLA the title.

The runners-up have a bevy of bowls to go to after that. The Bowl Alliance has the option of picking up the No. 2 team in the conference — a strong possibility if the Fiesta Bowl decides it wants ASU.

Should the conference earn a Bowl Alliance berth, the third-place team ends up in either the Cotton Bowl or the Holiday Bowl. The Cotton Bowl has the option of selecting the WAC champion instead of a Pac-10 contender.

The fourth-place team in the league is slated for the Sun Bowl and the fifth-place squad for the Aloha Bowl.

If the Bowl Alliance neglects the Pac-10, each team is bumped down one spot in the bowl progression.

Teams must have winning records to gain eligibility for a postseason berth.

In the unlikely case that Cal or Oregon State finish above .500, interest may arise from an independent bowl such as the Las Vegas Bowl.

# Sanyika

FROM PAGE 7

Somehow, Sekou found a way to endure.

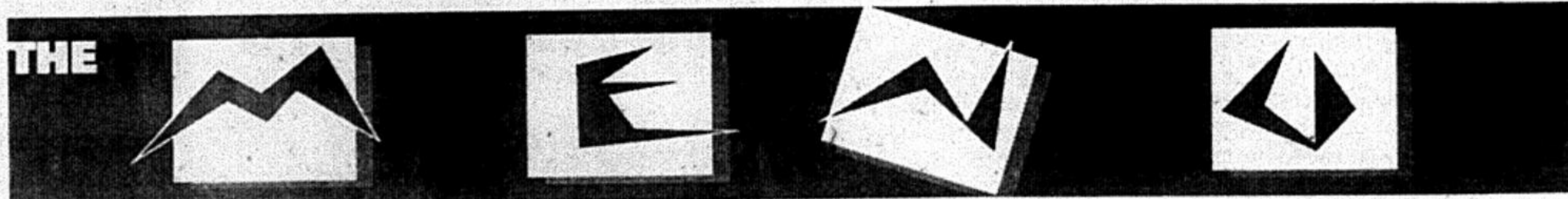
But when his performances in the classroom and on the football field weren't enough to change hardened impressions — when racial expletives rang within hearing distance, fortunately Sekou had his friends.

"Things got tough now and then," recalls Sekou. "We were so far away from home, and we were by ourselves. But we had each other. I don't think I would have survived without those guys."

"People would talk that the only reason we were there was because we were athletes," he continues. "There was a lot of jealousy. It was pretty much a white school, and they weren't used to seeing an influx of blacks coming in. Those are just haters on the road to success."

Now, Sekou doesn't worry about his detractors.

"I can't really do anything about it except just be who I am," he says. "If that hasn't changed their image of me, I'm sorry."



## AMERICAN

### Cafe Durant

2517 Durant Ave., Berkeley. 841-9905. Tue-Sun 7:30am-8:30pm, Mon 7:30am-6pm. Cafe Durant has been serving the Berkeley community for over 15 years. Budgeted for the students, we offer a variety of hearty American and Mexican breakfast and lunch

specials. All items are served all day. We use the freshest ingredients for our homemade fare. Our large, heated patio for outside dining and a cozy fireplace in our main dining room, offer comfortable seating.

### Homemade Cafe

2454 Sacramento corner of Dwight Way, Berkeley. 845-1940. Mon-Fri 7am-2pm, Sat-Sun 8am-3pm. Traditional American menu. Breakfast served all day. Large portions,

moderate prices. Great pancakes, waffles and blintzes. Our special: "Homefry Heaven." Credit cards: ATM.

## MEDITERRANEAN

### Europa

1981 Shattuck Ave., north of University, Berkeley. 841-1981. Lunch Tue-Fri 11:30am-2:30pm, dinner Tue-Fri dinner 5:30pm-9:30pm. Sat 5:30-10pm, Sun 5:30-9pm. Mediterranean murals, lush plants and a fountain provide a bright, casual atmosphere by day and a warm, romantic ambience by night. Favorites include Pomegranate Chicken, Lamb with Fig and Skewered Swordfish. Also featuring vegetarian specialties, wines, teas and dessert. Sample our traditional Mezza table with wine tasting every Thurs. Wheelchair accessible. Reservations and credit cards accepted.



**CHEESE'N'STUFF**

843-9233

Full Deli with Imported Cheeses  
Homemade Salads • Beer & Wine  
Catering Available

**Super Deluxe  
Deli Sandwich**

**\$2.00** w/coupon



Offer expires 11/20/97

## CHINESE

### The Orchid

2517 Durant Ave., (upstairs) Berkeley, 548-6959. Mon-Sun 10:30am-9:30pm. Lunch specialties—very large portion entrees that includes soup and salad—served all day until closing! Credit cards and reservations accepted.

## DELI

### Cheese-n-Stuff

2442 Durant Ave., Berkeley, 843-9233. Delicious sandwiches made fresh while you wait. A wide variety of tasty salads to choose from...clam chowder and chili in a big bread bowl...we've got more than just cheese!

## MEXICAN

### Fabuloso

2366 Telegraph Ave., Berkeley, 649-0292. 11am-10pm daily. Mexican food that is a bite above the rest. Only the freshest ingredients combined daily creating a variety of entrees, complete w/sauces, salsas, and sensational fruit drinks. Voted Best Burrito & Mexican Restaurant honorable mention Daily Cal 1997. No reservation or credit cards.

### Una Mas

1841 Euclid at Hearst Ave., on the north side of campus, Berkeley. 649-2780, fax 649-1700. Open 11am-8pm daily. Featuring tasty Mexican cuisine at reasonable prices in a lively atmosphere. Specialties are fish tacos and burritos—fish taco 99¢, draft beer 99¢—eat, drink, be merry and maybe go home with some change!

## ETHIOPIAN

### Blue Nile

2525 Telegraph, Berkeley, 540-6777. 11:30am-10pm Mon-Sat, Sun 5pm-10pm. Featuring authentic Ethiopian cuisine. Serving fresh, mild and spicy vegetarian and meat dishes in a relaxing, exotic atmosphere. The Blue Nile has been voted best in the Bay Area for 9 years in a row in consumer surveys. Beaded curtains, private booths, bamboo and plants enhance the aromas and flavors of this unique cuisine. A must visit. V, MC.

## ITALIAN

### Caffe Candido

2520 Durant Ave., Berkeley, 548-2727. Lunch 11:30am-2:30pm, dinner 5pm-9:30pm. Come celebrate the art of eating authentic Italian cuisine created by chef/owner Candido DiTerlizzi, a native Italian. Organic and seasonally inspired pastas, risottos, seafood and vegetarian specialties. Located in the award-winning Beau Sky Hotel. California and Italian wines, beer and espresso. Reservations accepted. V, MC, DC.

## VIETNAMESE

### Saigon Express

2045 Shattuck Ave., corner of Shattuck and Addison, Berkeley, 486-1778. Mon-Fri 10am-10pm, Sat 11am-10pm, Sun 11am-9pm. Specialties include banh mi, pho soup, cafe filtre & CH'E. V, MC, DC.

**\$1 off**

**Dinner Menu**  
starts at 4pm

with this ad.  
One per customer.  
expires 11/14/97



2045 Shattuck Ave  
Berkeley • 486 1778  
corner of Shattuck &  
Addison

Open Monday-Saturday  
11 am - 10 pm

**Saigon Express**

*We go to market for you!*

Authentic Vietnamese Cuisine

**Europa**

**Mediterranean/Arabic Cuisine**

**FREE DINNER ENTREE**

with ad & purchase of a 2nd dinner entree of greater or equal value.

Expires 11 20 97. One per party please.

1981 Shattuck Ave. Berkeley, CA 94704 • 841-1981

open for lunch and dinner

Cafe Durant

2517 Durant Ave. Berkeley


On the Sundeck

Now open for Dinner until 8:30 pm

Check it out!

Open:

7:30am - 8:30pm Tue-Sun  
7:30am - 6:00pm Mon



VOTED BEST FOR 9 YEARS IN A ROW

The Blue Nile

Authentic Ethiopian Cuisine

2525 Telegraph Avenue • Berkeley • 540-6777



10% OFF

all items

THE ORCHID

Chinese Cuisine



548-6959

Open until Midnight Mon-Fri  
9:30pm Sat & Sun  
2517 Durant Ave. #D  
2nd floor • Berkeley  
(across from Tower Records)

FRIDAY at

Fabuloso

After 5:00pm

\$1 Bottle Beer



2366 Telegraph Ave., Berkeley • 649-0292