

THE DAILY CALIFORNIAN

Established 1871. Independent Student Press Since 1971.

BERKELEY, CALIFORNIA

WEDNESDAY, NOVEMBER 6, 2002

WWW.DAILYCAL.ORG

ELECTION RESULTS NOV. 2002

If the mayor or a City Council candidate does not receive more than 45 percent of the vote, the top two candidates will face off in a runoff election Dec. 3. Asterisk (*) denotes incumbent.

BERKELEY MAYOR

Tom Bates	18,895	55.9%
Shirley Dean*	14,349	42.4%
John Boushell	514	1.5%

100% (77 of 77) precincts reporting

CITY COUNCIL

DISTRICT 8 (Southeast Berkeley/Elmwood)

Gordon Wozniak	1,684	41.8%
Andy Katz	1,446	35.9%
Anne Wagley	779	19.3%
Carlos Estrada	115	2.9%

100% (10 of 10) precincts reporting

DISTRICT 7 (Southside)

Kriss Worthington*	1,942	60.6%
Micki Weinberg	1,247	38.9%

100% (10 of 10) precincts reporting

DISTRICT 4 (Downtown)

Dona Spring*	2,340	67.2%
Bob Migdal	707	20.3%
LA Wood	352	10.1%
David Freeman	75	2.2%

100% (8 of 8) precincts reporting

DISTRICT 1 (Northwest Berkeley)

Linda Maio*	3,449	85.6%
Rhiannon	555	13.8%

100% (9 of 9) precincts reporting

GOVERNOR

Gray Davis (D)*	3,057,304	47.7%
Bill Simon (R)	2,700,935	42.1%
Peter Camejo (G)	337,344	5.3%

97.0% (23,988 of 24,726) precincts reporting

BERKELEY BOARD OF EDUCATION

Nancy Fiddle	17,245	24.7%
Terry Doran*	14,766	21.1%
Shirley Issel*	14,253	20.4%
Sean Dugar	8,895	12.7%
Lance Montauk	4,519	6.5%
Derick Miller	4,312	6.2%

100% (77 of 77) precincts reporting

BERKELEY MEASURES

MEASURE I (Animal Shelter Bond)†

Yes	21,247	68.5%
No	9,782	31.5%

MEASURE J (City Hall Retrofit Bond)†

Yes	11,827	39.6%
No	18,059	60.4%

MEASURE K (School Board Salary Increase)

Yes	20,335	67.2%
No	9,923	32.8%

MEASURE L (Pedestrian Safety)†

Yes	16,731	54.2%
No	14,121	45.8%

MEASURE M (Affordable Housing/Property Transfer Tax)†

Yes	16,026	51.3%
No	15,191	48.7%

MEASURE N (Waterfront Plan)

Yes	19,540	67.2%
No	9,537	32.8%

MEASURE O (Organic, Fair-Trade Coffee)†

Yes	9,564	30%
No	22,352	70%

MEASURE P (Limits Building Heights)

Yes	6,256	20%
No	24,949	80%

† requires two-thirds vote to pass
100% (77 of 77) precincts reporting

See RESULTS, page 3

ONLINE

Elections: New electronic voting machines are put to the test in Alameda County.

Tobacco: The city of Berkeley offers a program to help smokers quit.

Visit www.dailycal.org/news.

Bates Wins Mayoral Seat by Large Margin



STAFF/RAMIN RAHIMIAN

STUDENTS AND CHAMPAGNE surround a triumphant Tom Bates after he won Berkeley's mayoral election last night.

Candidate Thanks Students for Support

by WENDY LEE
and NATE TABAK
DAILY CAL STAFF WRITERS

Tom Bates trounced eight-year incumbent Shirley Dean for mayor by a large margin early this morning.

Dean was defeated by a nearly 13 percent margin, with Bates earning 55.6 percent and Dean 42.7 percent of the total vote.

Dean admitted defeat but had not yet conceded to Bates at press time.

"We now have a chance to solidify the progressive majority," Bates said, announcing his victory at around midnight. "We now need to move on."

The mayor-elect said he would push through more progressive-backed measures than Dean, who he said often blocked them.

Bates added that he would work with moderates to pass measures but said the moderates "may not always like what I do."

Bates said he would bring the recent development of the Downtown arts district to the rest of Berkeley. In addition, he said he would encourage the construction of more affordable housing and make Berkeley an environmental leader.

"We need to provide hope for the rest of the nation," Bates said. "The rest of the nation is going in the wrong direction. Berkeley is going in the left direction."

He also added that he plans to appoint more students to city commissions.

See MAYOR, page 4

ASUC SENATE SCRAMBLES FOR MONEY TO PAY LIABILITY TO UC

About \$400,000 Owed to University Financial Aid Programs

by JAY KAPP
CONTRIBUTING WRITER

The ASUC has failed in its obligation to pay the university nearly half a million dollars gleaned from a recent increase in student fees, leaving the student government severely strapped for cash.

The ASUC contingency fund, usually used to cover such emergency situations, currently contains less than \$20,000.

This failure represents a violation of UC policy requiring the ASUC to return one third of the money generated by a student fee increase to need-based financial aid programs.

The controversy stems from the 2001 passage of Proposition 2, which raised the student activity fee by \$17.50

per student per semester. Proposition 2 money has subsequently gone to the ASUC for distribution primarily to student groups.

The ASUC budget for 2002-03, which last year's senate decided upon, did not make any allowances for this substantial portion of the nearly \$1.9 million budget to be returned in this manner.

In sharp contrast, the fall budgeting process of the year immediately following Proposition 2's passage, when \$1.1 million in student fees were disbursed to the ASUC, returned \$367,000 to the university for financial aid in accordance with UC policy.

But this year, that mandatory

See ASUC, page 4

Progressives Up Council Majority; Bates Says All Voices Will Be Heard

by KIM-MAI CUTLER
and STEPHANIE LEE
CONTRIBUTING WRITERS

Tom Bates' victory in the Berkeley mayoral race was more than just a personal triumph. The new leader of Berkeley's progressive majority adds one more council seat to a faction that already controlled a 5-4 majority.

At least six of the nine members of the newly elected City Council will be progressives.

Depending on the results of a month-long runoff, that margin could increase to 7-2.

"I think it will allow more progressive things to happen in harmony in Berkeley," said victorious Councilmember Dona Spring. "There will be a less sharply divided council. It will be working more in consensus, less in polarity."

District 4 incumbent Spring won

handily. With all precincts reporting, she has 67 percent of her district's vote.

The city's voters also returned Spring's fellow progressive incumbents, District 7 Councilmember Kriss Worthington and District 1 Councilmember Linda Maio.

Worthington refused to characterize Bates' success as a progressive mandate, however.

"All eight (council) members' lives will be much happier regardless of their political background," Worthington said. "(Bates) will treat all council members with dignity and respect."

Maio's victory was all but assured. The only opposition the popular council member faced came from political novice Rhiannon. With all precincts reporting, Maio has 86 percent of

See COUNCIL, page 4

Andy Katz Prepares To Get Out the Vote For District 8 Runoff

Students in District 7 Not Enough for Weinberg

by KIM-MAI CUTLER
and RONG-GONG LIN, II

In an election featuring two heavily backed student candidates, both failed to win outright in yesterday's election.

Andy Katz, a UC Berkeley graduate student supported by the city's progressive faction, came in a close second to former Berkeley lab employee Gordon Wozniak, who was supported by moderate homeowners in the District 8 race.

With no candidate winning more than 45 percent of the vote, the Southeast Berkeley/Elmwood district will face a runoff election on Dec. 3.

Moderate-backed UC Berkeley sophomore Micki Weinberg made a respectable showing in the Southside's District 7, garnering 40 percent of the vote in a race where the incumbent, progressive stalwart Kriss Worthington, was heavily favored to win.

At one point in last night's count Weinberg even pulled ahead of Worthington by two percentage points, surprising many political observers.

District 8 voters will participate in an all-mail-in runoff election, receiving ballots from the city clerk's office by Nov. 22. Voters will have to mail in or drop off their ballots at the city clerk's by Dec. 3.

Runoff elections generally have lower turnout, which could negatively affect Katz's bid for a council seat.

Lower turnout generally favors more conservative candidates such as Wozniak. The runoff period also comes during Thanksgiving and the final week of classes at UC Berkeley.

"We need to advise voters to watch their mail and look out for the ballot and to not treat it like junk mail," Katz said. "It's going to take a strong

See STUDENTS, page 6

Democrats Nearly Sweep State Offices

California Voters Approve Education-Friendly Prop. 47

by R. TYLER HILLMAN
and AMELIA HEAGERTY

In a blaze of apathy, California voters heaved Gov. Gray Davis back into the governor's mansion for another four years yesterday.

After what at first appeared to be a close race, Davis managed to pull ahead and trounce his Republican opponent Bill Simon.

Early returns had Simon leading Davis by a 2 percent margin with 21 percent of precincts reporting.

The tables were turned by 11:30 p.m. when Davis took the lead with 47.3 percent of the vote against Simon's dwindling 42.6 percent.

"With all our challenges and all our problems (California) is still the greatest place to live on the planet Earth," Davis said during his victory speech in Los Angeles, prior to thanking the Republicans and independent voters who crossed party lines to re-elect him.

Other statewide races followed a

See STATE, page 4

NEWS IN BRIEF

Alleged Robber of Bag Chased by Its Owner

A Concord man was arraigned on a robbery charge yesterday a day after he allegedly mugged a man standing in front of Tully's Cafe who refused to give him a cigarette.

Kevin Clark, 21, was arrested Monday night after his victim chased him through the streets of Downtown Berkeley, police said.

Clark made off with the man's bag after a struggle on the 2100 block of Shattuck Avenue shortly before 8 p.m., said Berkeley police Officer Mary Kusmiss.

The man was rolling a cigarette outside when Clark asked him for a cigarette, Kusmiss said.

When the man refused, Clark stated he would not leave until he got a cigarette, Kusmiss said.

After the man finished his cigarette he told Clark, "I guess I'm not a nice person 'cause I'm not going to give you a cigarette," according to police.

"I can be not nice too—do you want to see?" Clark replied, according to police.

Clark allegedly moved in closer and took the bag, escaping after the struggle. He dropped the bag but later returned to retrieve it, Kusmiss said.

Police recovered the bag, which contained about five dollars, tobacco, multiple asthma-type inhalers and clothing after Clark was arrested.

—Nate Tabak

Chancellor Speaks Regarding Grievances

In a year of budget cuts and paltry salary raises, Chancellor Robert Berdahl answered questions from UC Berkeley staff yesterday about wages and increased workload.

Berdahl offered no immediate solutions to employee grievances, and audience members moved from laughter to tense criticism of his policies during a speech sponsored by the Berkeley Staff Assembly.

"We take pride at public universities that we are doing more with less," he said. "But we have probably overdone this. At some point there is no more give."

Responding to complaints that UC Berkeley faculty salaries could not support families, Berdahl said faculty income will only increase if employees move up to higher paying positions within the university.

"We don't begin to pretend it is easy," Berdahl said. "The way people can better be able to provide for their families is through (career) advancement. Our hope is that we can provide the opportunities and means by which people can obtain advancement."

He pointed to a new UC Berkeley program, the Career Development Opportunity Program, as evidence.

—Emma Schwartz

See full story online at www.dailycal.org.

Student Candidate Campaigns Near Polls

City Council District 7 candidate Micki Weinberg and his supporters were seen campaigning near at least two polling sites on Southside, prompting questions about its legality.

California Elections Code Section 18370 states that no person shall conduct any sort of "electioneering" within 100 feet of a polling place.

Weinberg, who was defeated in his City Council bid, was seen campaigning to voters waiting in line outside the Center for Independent Living, a polling site on Telegraph Avenue. He was reportedly asking voters "Can I count on your vote?" as they were waiting to cast their ballots.

Weinberg said he did set up a campaign table that was more than 100 feet outside a polling site, but was unsure of the exact distance.

"I mean, I don't have a tape measure with me," Weinberg said.

People donning Weinberg T-shirts and carrying signs were also campaigning on the Durant Avenue sidewalk adjacent to Norton Hall, Unit 3, another Southside polling site, said UC Berkeley junior Lauren Sasaki.

"They were much closer than 100 feet (from Norton Hall)" said UC Berkeley sophomore Alyson Edwards. "They were reminding people, 'Are you voting for Micki?' They were very persistent."

—Paul Thornton

DAILY CALENDAR

Wednesday, November 6

AN DIE FERNE GELIEBTE Benjamin Park, bass, and Roger Moseley, piano, play Beethoven. Noon, Hertz Hall, UC Berkeley, free. 642-4864.

SWAN LAKE Staged by the Bolshoi Ballet, with members of the Berkeley Symphony Orchestra, sponsored by Cal Performances. 8 p.m. through Sat., also 2 p.m. Sat., 3 p.m. Sun., Zellerbach Hall, UC Berkeley, \$38 and up, half price w/ student ID. 642-9988.

WHAT CAN WE RATIONALLY WILL? A series by moral philosopher Derek Parfit, "Contractualism," today and seminar discussion on Thursday, sponsored by the Tanner Lectures. 4:10 p.m., Toll Room, Alumni House, UC Berkeley, free. 643-7413.

Thursday, November 7

LUNCH POEMS Ni-Young Lee reads from "The City in Which I Love You" and "Book of My Nights." 12:10 p.m., Morrison Library in Doe Library, UC Berkeley, free. 642-0137.

MIDDLE EASTERN FILM SERIES "Desiring Europe: The Migrant Subject in the New Moroccan Cinema" and other films, introduced by Tarek Elhaik. 5 p.m., Sultan Room, The Center for Middle Eastern Studies, 340 Stephens Hall, UC Berkeley, free. 642-8208.

THE RED HOT CHACHKAS Rip-roaring Klezmer

musicians celebrate the release of their new album. 8 p.m., Freight and Salvage Coffee House, 1111 Addison St., \$14.50. 548-1761.

CAUGHT IN FADING LIGHT Zen interpreter Gary Thorp recounts his experiences during a trek to see the mountain lion in its natural habitat, from his new book. 7:30 p.m., Cody's Books, 2454 Telegraph Ave., free. 845-7852.

Friday, November 8

UNIVERSITY GOSPEL CHOIR Music in the American tradition, directed by Silvester Henderson. Noon, Hertz Hall, UC Berkeley, free. 642-4864.

FLU SHOTS (FOR EVERYBODY) Noon, Tang Center, 2222 Bancroft Way, \$20, \$4 with Student Health Insurance Plan. 642-1814.

HECHO EN CALIFAS FESTIVAL Puerto Rican Hip Hop and Nuyorican poets. 8 p.m., La Pena Cultural Center, 3015 Shattuck Ave., \$12 advance. 849-2568.

Calendar listings may be submitted as follows: fax (849-2803), e-mail (calendar@dailycal.org) or in person (sixth floor Eshleman Hall, Monday through Friday, 9 a.m. to 5 p.m.). Always include contact name and phone number along with date, day, time, location and price (if applicable) of event. Placement is not guaranteed. Events that do not directly relate to UC Berkeley students or Berkeley residents will not be listed.

Incumbents Retain Seats On School Board

Newcomer Riddle Expected To Bring Financial Wisdom

by EMMA SCHWARTZ
DAILY CAL STAFF WRITER

The new Board of Education the city of Berkeley elected last night sent a message that voters want more budgetary responsibility from their board members but also affirmed that they are at least somewhat satisfied with the board's progress.

In a small victory celebration at her home, Nancy Riddle—chief finance officer for a local business and newly elected board member—said she was tired, but that her victory will give the school board a strong sense of fiscal guidance. "I think that it was broad support (that got me elected)," she said. "People saw my financial background and said, 'I need a piece of that.' I'm looking forward to going back to research and committee work."

Riddle's victory raised hopes that the district will soon solve its budget woes. "She's got a big business background

See SCHOOLS, page 3

Height Initiative, Coffee Measure Are Both Resoundingly Defeated

Berkeleyans Also Fail to Pass Most City Bond Measures

by RONG-GONG LIN, II
DAILY CAL STAFF WRITER

By three-to-one margins, Berkeley voters overwhelmingly rejected two controversial proposals that would have restricted the sale of nonorganic coffee in the city and the height of new buildings in Berkeley.

A wide range of bond measures and new taxes, from retrofitting Old City Hall to a property transfer tax for affordable housing, fell well short of the two-thirds margin required for victory. Measure I, a bond measure to construct a new animal shelter, appeared to be heading toward victory.

Voters dismissed Measure O by a lopsided 30-70 percent margin, with 97 percent of the precincts reporting. The proposal would have required that brewed coffee sold in Berkeley be organic, shade-grown and fair-trade certified. Violators would be punished by up to six months in jail or a \$100 fine. Supporters, who were outspent by opponents four-to-one, were disappointed by the wide margin of rejection but said the proposal wasn't a complete failure.

"I think that it certainly has raised people's awareness about the coffee issues. It has raised people's awareness in general about the consequences of

their purchases," said Rick Young, the UC Berkeley Boalt Hall School of Law alumnus who authored Measure O.

Measure P, which would have put restrictions on the heights of newly constructed buildings in Berkeley, was defeated by an even greater margin—80 percent voted against the measure.

"I feel very gratified that all the work helped vote down the measure in a town that reads and educates itself before it votes," said Berkeley City Councilmember Linda Maio, an ardent opponent of Measure P, who was also re-elected by a wide margin last night.

"I'm happy Measure P is going down in flames," said Councilmember Miriam Hawley.

The proposal would have prevented new buildings from being taller than two to three stories along several major avenues. Supporters said tall buildings were threatening neighborhoods' characteristics.

Howie Muir, who co-sponsored the initiative, said the measure brought up concerns about growing residential density that are not going away.

"The population density, how Berkeley will grow—all those issues, they'll be there waiting even though election day is over," Muir said. "I just hope the city engages positively on the issues rather than trying to ignore

POLICE LOG

MONDAY, NOVEMBER 4, 9:18 A.M. Vandalism to a telephone, Moffitt Library. Under investigation. (UCPD)

9:39 A.M. Female victim of petty theft of campus parking permit, Prospect Court. Under investigation. (UCPD)

12:45 P.M. Female victim of petty theft of two bicycle helmets, 2300 block of Bancroft Avenue. (UCPD)

3:04 P.M. Residents, staff report annoying phone calls, Unit 1. Under investigation. (UCPD)

3:58 P.M. Fire alarm malfunction, Haas School of Business. BFD responded. Alarm reset. (UCPD)

10:44 P.M. Suspicious circumstance reported, Dwinelle Hall. Under investigation. (UCPD)

them."

Measure I, a \$7.2 million bond measure to construct a new animal shelter, appeared to have garnered the necessary two-thirds vote to pass, bringing in 68 percent of the vote, with 97 percent of the precincts reporting.

But that was the only bond measure to pass. Voters resoundingly rejected the three other bond measures on the ballot, including Measure J, a \$21.5 million bond to retrofit Old City Hall. The other two bond measures fell well short of the two-thirds majority to pass: Measure L, which would have a special tax on land improvements to fund pedestrian safety improvement projects, and Measure M, a property transfer tax that would fund affordable housing projects.

Berkeley voters approved Measure K, which increases salaries of Berkeley Board of Education members from \$875 to \$1,500 per month, the first salary increase since 1988.

Voters also approved Measure N, a proposal that would give the Berkeley City Council authority to alter policy-controlling development of the waterfront property.

Wendy Lee of The Daily Californian staff contributed to this report.



ADMINISTRATION

HUBERT BRUCKER, General Manager
CORINNE CHEN, Classifieds Manager
JOYCE CHEN, Sales Manager
TANYA DUNN, Accounting Manager
KEN PAGANO, Production Manager

This publication is not an official publication of the University of California, but is published by an independent corporation using the name The Daily Californian pursuant to a license granted by the Regents of the University of California. Advertisements appearing in The Daily Californian reflect the views of the advertisers only. They are not an expression of editorial opinion or of the views of the staff. Opinions expressed in The Daily Californian by editors or columnists regarding candidates for political office or legislation are those of the editors or columnists, and are not those of the Independent Berkeley Student Publishing Co., Inc. Unsigned editorials are the collective opinion of the Senior Editorial Board. Reproduction in any form, whether in whole or in part, without written permission from the editor, is strictly prohibited. Copyright 2002. All rights reserved.

THE DAILY CALIFORNIAN

Berkeley's Independent Student Press—Celebrating 131 Years.

SENIOR EDITORIAL BOARD

RONG-GONG LIN, II, Editor in Chief and President
VIRGINIA GRIFFEY, Managing Editor

TYLER CHAN, Online Editor R. TYLER HILLMAN, University Editor
GEORGE CHIKOVANI, Sports Editor MEGAN MAJOR, Staff Representative
SOUMMYA DATTA, Photo Editor MIKE MEYERS, City Editor
MARGARET GOUGH, Night Editor ERIC SCHEWE, Arts Editor
ANDREW HARKINS, Design Editor PAUL THORNTON, Opinion Page Editor

CORRECTIONS/CLARIFICATIONS:

The Daily Californian strives for accuracy and fairness in the reporting of news. If a report is wrong or misleading, a request for a correction or clarification may be made.

LETTERS TO THE EDITOR:

Letters may be sent via e-mail. Letters sent via U.S. mail should be typed and must include signature and daytime phone number. All letters are edited for space and clarity.

ALL DEPARTMENTS:
(510) 548-8300
FAX: (510) 849-2803

ONLINE EDITION:
http://www.dailycal.org

ONLINE CITY GUIDE:
http://www.bestofberkeley.com

OFFICES:
600 Eshleman Hall

MAILING ADDRESS:
P.O. Box 1948
Berkeley, CA 94701-0949

E-MAIL:
dailycal@dailycal.org

Published Monday-Friday during the academic year by The Independent Berkeley Student Publishing Co., Inc. The nonprofit 185PC serves to support an editorially independent newsroom run by UC Berkeley students.

DEPARTMENT DIRECTORY

EXTENSIONS
(510) 548-8300

E-MAIL

CLASSIFIED ADS..... X 211	classes@dailycal.org
DISPLAY ADS..... X 216	ads@dailycal.org
UNIVERSITY DESK..... X 415	newsdesk@dailycal.org
CITY DESK..... X 414	newsdesk@dailycal.org
SPORTS DESK..... X 425	sports@dailycal.org
OPINION DESK..... X 417	opinion@dailycal.org
ARTS DESK..... X 422	arts@dailycal.org
SCIENCE..... X 429	science@dailycal.org
PHOTO..... X 427	photo@dailycal.org
LIBRARY..... X 433	library@dailycal.org
SUBSCRIPTIONS..... X 428	subscription@dailycal.org

ELECTION RESULTS NOV. 2002

RESULTS, continued from front

ALAMEDA COUNTY MEASURES

MEASURE AA (AC Transit Parcel Tax)
 Yes 113,997 68.6%
 No 52,216 31.4%
 requires two-thirds vote to pass
 94% (680 of 719) precincts reporting

MEASURE BB (BART Seismic Safety Bond)
 Yes 165,897 66.4%
 No 83,968 33.6%
 requires two-thirds vote to pass
 95% (1047 of 1092) precincts reporting

PROPOSITIONS

PROP 46 (Housing/Shelter Bond)
 Yes 3,461,668 57.8%
 No 2,535,438 42.2%

PROP 47 (School Facilities Bond)
 Yes 3,582,948 59.1%
 No 2,482,736 40.9%

PROP 48 (Court Consolidation)
 Yes 4,094,860 72.6%
 No 1,551,868 27.4%

PROP 49 (After School Programs)
 Yes 3,418,005 56.7%
 No 2,615,708 43.3%

PROP 50 (Water Quality Bond)
 Yes 3,307,717 55.5%
 No 2,657,529 44.5%

PROP 51 (Redistribution of Transportation Tax)
 Yes 2,412,957 41.5%
 No 3,392,549 58.5%

PROP 52 (Same-day Voter Registration)
 Yes 2,453,806 40.9%
 No 3,532,728 58.1%

UNITED STATES REPRESENTATIVE

Barbara Lee (D)* 100,317 81.3%
 Jerald Udinsky (R) 18,736 15.2%
 89.6% (481 of 481) precincts reporting

RENT STABILIZATION BOARD

Chris Kavanagh 15,833 20.4%
 Selma Spector 15,469 19.9%
 Robert Evans 15,451 19.9%
 Howard Chong 15,024 19.4%
 Pinkie Payne 14,881 19.2%

LT. GOVERNOR

Cruz Bustamante (D)* 3,099,816 49.9%
 Bruce McPherson 2,563,772 41.3%
 95.4% (23594 of 24726) precincts reporting

SECRETARY OF STATE

Kevin Shelley (D) 2,852,310 46.6%
 Keith Olberg (R) 2,563,979 41.9%
 95.4% (23594 of 24726) precincts reporting

CONTROLLER

Steve Westly (D) 2,795,788 45.7%
 Tom McClintock (R) 2,734,789 44.7%
 95.4% (23594 of 24726) precincts reporting

TREASURER

Phil Angelides* (D) 3,014,467 49.7%
 Greg Conlon (R) 2,432,671 40.1%
 95.4% (23594 of 24726) precincts reporting

ATTORNEY GENERAL

Bill Lockyer* (D) 3,161,266 51.7%
 Dick Ackerman (R) 2,440,749 40.0%
 95.4% (23594 of 24726) precincts reporting

INSURANCE COMMISSIONER

John Garamendi (D) 2,846,149 46.8%
 Gary Mendoza (R) 2,510,319 41.3%
 95.6% (23626 of 24726) precincts reporting

STATE SUPERINTENDENT

Jack O'Connell 3,164,144 61.8%
 Katherine Smith 1,959,125 38.2%
 95.6% (23626 of 24726) precincts reporting

MEMBER, STATE BOARD OF EQUALIZATION FIRST DISTRICT

Carole Migden (D) 1,014,408 60.3%
 Mark S. Bendick (R) 570,134 33.9%
 98.0% (6889 of 7027) precincts reporting

Decreasing Racial Achievement Gap a Priority

SCHOOLS, from page 2

and done a lot of (committee work) and I think that she'll be helpful in getting into the district through budget issues," said Andy Turner, school board student director.

Despite voter's dissatisfaction with the district's \$3.9 million deficit, incumbents Shirley Issel and Terry Doran retained their seats on the board.

Issel campaigned heavily on decreasing the racial and economic achievement gap. She also stressed her leadership in establishing a writing

program in Berkeley's public schools.

She said her re-election is a sign from the voters that the board was on the right track in bringing the district out of the red.

"I'm really pleased," Issel said. "It's an affirmation of the board and the direction we are taking to face up to a problem. I think it is a recognition of the progress we made."

Doran, a former Berkeley High School teacher, has been a strong advocate for students and creating small schools at the high school.

"I am just glad to continue what I

started pushing for four years ago," he said, adding that he was pleased with the makeup of the new school board.

In another city election, a pro-tenant slate of rent board commissioners swept their way onto the Rent Stabilization Board.

"I'm very happy to be able to work as a commissioner to protect, extend (and) maintain these protections," said incumbent Howard Chong, a recent UC Berkeley alumnus.

Other rent board commissioners elected include Robert Evans, Pinkie Payne, Chris Kavanagh and incumbent Selma Spector.

Nate Tabak of The Daily Californian staff contributed to this report.

Senior Portraits
 How do you want to be remembered?
 Sign up online at laurenstudios.com Questions? Call 642-8247 • bluegold@berkeley.edu

BANCROFT CLOTHING CO.

25% OFF ALL Cal HOODS

Choose from over 35 styles. All styles 25% OFF
 2530 Bancroft Way, Berkeley (510) 841-0762 • Across from Sproul Hall on Bancroft

Don't fret...
 Maxwell Yim's column
 will return next week.

sure, you can quit.
 or stick around
 and [learn]
 how not to.

In Army ROTC, you'll develop skills you can use in the real world - thinking on your feet, staying focused under pressure, taking charge. Give it a shot. Visit the Army ROTC department. We'll stick around for you.

ARMY ROTC

Unlike any other college course you can take.

Call (510) 643-7505
 Or visit: <http://army.berkeley.edu>

Hey, Fall-only students!
 Time's running out for
 financial aid applications.

If you are enrolled at Cal *only* for the Fall semester and you still want to apply for financial aid, you must complete the online 2002-2003 Free Application for Federal Student Aid (FAFSA) by November 15, 2002.

Visit www.fafsa.ed.gov to complete your FAFSA. You will need a federal PIN number to file the FAFSA. You and your parent (if you are a dependent student) can obtain a PIN at www.pin.ed.gov.

UC Berkeley
 Financial Aid Office
 211 Sproul Hall

Katz, Wozniak to Face Each Other in Runoff

COUNCIL, from front

the vote.

"I had very little opposition," Maio said. "I've worked in my district for almost a decade. I've helped solve problems, and I had a lot of support."

The city's nine-member council has 8 districts. The mayor occupies the ninth seat and chairs the council meetings.

Bates said that although the progressives already possessed a majority before his victory, their vision was suppressed by the outgoing Mayor Shirley Dean.

"I'll ensure they get heard," Bates said.

Only the District 8 race seat remains undecided. The top two vote-getters are headed to a runoff election that will be decided Dec. 3.

Moderate-backed Gordon Wozniak will face the nominally progressive Andy Katz. The two received 41.8 percent and 35.9 percent of the District 8 vote, respectively.

A council candidate needs 45 percent of the vote to win outright and avoid a runoff.

Since neither of the two candidates did that, Katz and Wozniak now face the prospect of an intense one month campaign.

"We need to reach out to all neighborhoods in the district to show voters that I'm the candidate that will make Berkeley work," Katz said.

The amount of money each candidate can afford to spend in the next few weeks could tip the election, although Katz was unwilling to concede this.

"The most important thing is people power and not just the power of

money, (but) now I'm running against a well-funded opponent," Katz said.

The now more-outnumbered moderates were dismayed at their newly deteriorated situation.

"I'm feeling very disappointed about it," said District 5 Council member Miriam Hawley, who was not up for re-election this year.

Hawley said her only consolation was that the height initiative, Measure P, "went down in flames."

Measure P would have limited building heights outside the city's downtown.

Nate Tabak of The Daily Californian staff contributed to this report.

Rep. Barbara Lee Wins Re-Election

STATE, from front

similar pattern, beginning close and ending in a Democratic victory when the party swept California's major offices.

Democrat Cruz Bustamante was elected Lt. Governor and Bill Lockyer became California's choice for Attorney General.

"I'm extremely pleased that the state of California has re-elected Democratic leadership and rejected the reactionary politics of Simon," said Berkeley resident Nancy Carleton. "I hope we see more movement toward environmental protections such as the stricter emissions standards that Davis has passed and more forward movement on expanding domestic partnership rights."

Green Party candidate Peter Camejo, though receiving only 5.2 percent of the vote statewide, polled nearly double that in Alameda County.

Similarly, the split between Davis and Simon was considerably more lopsided in Davis' favor in Alameda County than the neck and neck returns statewide.

Simon's camp had been beset in the last weeks of the campaign by a flap over erroneous accusations of Davis' fundraising practices—leaving many doubtful of a Simon victory.

"All of the models we have to predict elections say that Gray Davis should lose—the economy is not doing well, and Davis is unpopular," said UC Berkeley political science graduate student Justin Buchler, who attended an election night event at the Institute for Governmental Studies. "People assume those models to

be wrong because Bill Simon has been running a terrible campaign."

Incumbent Rep. Barbara Lee (D-Berkeley), most famous for her lone vote against the use of force following Sept. 11, was re-elected to her seat.

Her progressive views appeared to speak to Berkeley residents, who elected her by a margin greater than 80 percent.

Despite Lee's galloping success, the Democrats failed to make overall headway in the Congress.

The House of Representatives party makeup includes 225 Republican, 202 Democrats, one independent and seven undeclared at the time of printing.

In the Senate, Republicans secured a slim majority of 50 seats. With three seats undeclared, Democrats had notched three seats with one going to an independent.

Though neither of the state's senators faced re-election this year, concern arose among California residents over the Democratic loss in the Senate.

"I'm sad to hear it," said Berkeley resident Gerry Robinson, referring to the new Republican senate majority. "If the Republicans get in and make a mess of it, they deserve to sit in their own crap."

Berkeley residents last night were already envisioning a government dominated by Republicans.

"I think it's a tragedy for the nation," Carleton said. "We'll have horrible judicial appointments and (President) Bush will have been given a blank check to go to war and destroy the environment, and all of us in Berkeley need to fight back."

Despite the shift in the Senate, politics in Washington D.C. may return to partisan bickering.

"Whichever way it goes, it's only one or two votes," said political scientist Paul Eykamp. "For the most important issues like judges, because of the filibuster, it's not going to matter much anyway."

Statewide Proposition 52, which would allow same-day voter registration, appeared set to pass early this morning.

Heavily promoted by the UC, Proposition 47 also seemed likely to become law.

This proposition would target \$13 billion to improve education facilities throughout the state.

The only proposition on yesterday's ballot in danger of failing last night was Proposition 51, which would allocate tax receipts to highway safety.

"Voters in 2004 (were) faced with a clear retrospective decision," said Matt Jarvis, a UC Berkeley political science graduate student who also attended an election night event at the Institute for Governmental studies. "Do they like what happened since 2000 or not?"

R. Tyler Hillman is a staff writer and Amelia Heagerty is a contributing writer for The Daily Californian. Bonnie Chan, Kim-Mai Cutler and Stephanie Lee contributed to this report.



MAYOR DEAN reacts after hearing that Tom Bates has taken the lead in the mayoral race. Her campaign manager, Bryan Schwartz, broke the news.

Bates Says He Won't Forget Students' Support

MAYOR, from front

"I'm really happy that the students supported me," Bates said after he claimed victory. "I'm not going to forget it."

Bates' campaign party was in full swing last night, as attendees shouted "kick ass" as the returns came out in their candidate's favor.

Over 200 supporters attended the event.

"I think he will bring a great deal of perspective and pragmatism to the council," said Rep. Barbara Lee, D-Berkeley.

A group of supporters chanted "ding dong the witch is dead" after Bates announced his victory.

Meanwhile, farther down Shattuck

Avenue, morale was low at Mayor Shirley Dean's headquarters.

Supporters were doubtful of victory despite Dean's initial lead from absentee ballot returns.

Outgoing moderate-backed Councilmember Polly Armstrong said the absentee ballots "sound worrisome."

"You did everything you could do," Armstrong told Dean. "If Berkeley doesn't appreciate you, screw them."

Five minutes before midnight, Dean announced to a remaining group of approximately 20 supporters, "The numbers don't look good."

With a glint of sadness in her eyes, Dean recalled an elderly man's words said to her in front of the North Berkeley Bart Station yesterday morning.

"Well, you're gonna win," Dean recalled the man saying. "He was

wrong," she added.

"If you win, you will have four glorious years," the man told Dean. "If you lose, you will have four glorious years."

"We'll just leave it at that," Dean said as she accepted a hug from her husband. "Let's fold this place up."

Despite Dean's nonconcession to Bates, her campaign manager, Bryan Schwartz, accepted defeat.

"We lost. I hope Tom Bates doesn't blow all the progress (Dean) worked so hard for," Schwartz said.

Some of the supporters cried after Dean made her announcement, while others said they were skeptical of the mayor-elect's promises.

"Let's see when the rubber hits the road what they can produce," said Dan, Dean's husband.

Dean's term as mayor ends on Nov. 30.

Stephanie Lee contributed to this report.

Senators Propose Ways to Find Funds

ASUC, from front

allocation was not made.

"I think that last year's senate screwed up," said Student Action Senator Cliff Costa. "We are going to solve it for them."

Over the past two months, the ASUC Senate addressed the problem behind closed doors in meetings known as executive sessions.

ASUC President Jesse Gabriel cited "pending litigation" as the reason for the secrecy.

"We are having some financial issues with the university, but I suspect we will work this out," he said.

It is unclear at this time where the money will be drawn from to fulfill this obligation because the ASUC has already completed its 2002-03 budgetary allocations.

Senators have so far proposed a variety of different methods to pay back the university, but no concrete plans have been made.

"It's something the ASUC Senate and executives still haven't figure out," said Student Action Senator Jenn Ro, chair of the Senate Finance Committee.

Some senators have proposed using money from both the Long-Term Investment fund and the Legal Defense fund, although the amount accessible from these funds is less than \$125,000.

"It is a crisis for the ASUC because now we need to allocate \$400,000 from some funds," Costa said.

Many senators agreed that money should not be taken away from student groups who were already allocated money for this year.

"If anything comes of this, it is definitely within our capabilities to solve this so that it won't hurt student groups," Gabriel said.

Although the university has not yet demanded the payments from the ASUC, senators said they are worried it could start to charge interest on the money.

"If we owe the university money, they could just start tacking money on top of that," said Berkeley College Republicans Senator Paul LaFata.

The debt is only one of many financial obstacles facing the ASUC.

"We are all facing deficits in some places and cutbacks in others," Ro said.

"It hurts in small ways, and it hurts in big ways," she added, citing the financial aid debacle as one of the major issues facing the ASUC.

A senate bill to resolve the situation is currently being drafted, senators said.

Jay Kapp covers the ASUC. E-mail him at studentgov@dailycal.org.

\$7.99

(Reg. \$14.00)

M-F 9-9
Sat 9-7
Sun 11-6

HAIRCUT & BLOW DRY

Great Clips for hair.

Guaranteed Satisfaction
Guaranteed Style.™

2415 Shattuck Ave. • 845-2322
(Across from Toyota's)

Limit one per customer.
Void with other offers.
Expires 1/15/03

Turn your trash into treasure!!!

Donate your stuff to Cal's Re-Used Stuff Emporium...and pick-up some free stuff for yourself

Re-USE is a program that collects usable but unwanted items and re-distributes them to faculty, students, and staff only.

Check out our hours at recycle.berkeley.edu/reuse.htm

In coordination with Excess Surplus and Salvage
Made possible through the combined efforts of:
Campus Recycling and Refuse Services,
Physical Plant - Campus Services,
Business and Administrative Services, ASUC, and
California Integrated Waste Management Board

LAW SCHOOL 101

Secrets to 1st Year Success

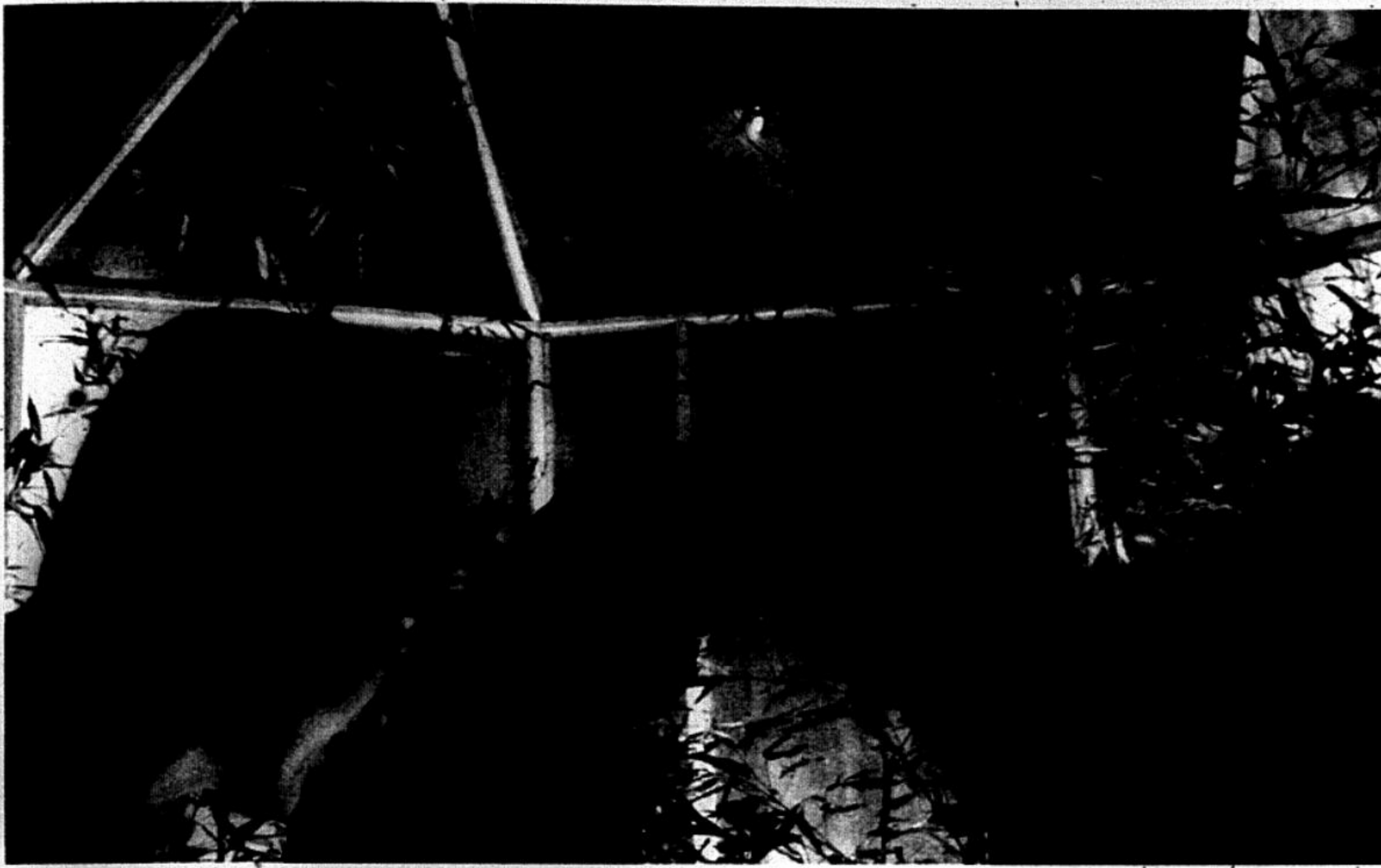
At this **FREE EVENT**, get insider tips from **Larry Levine**, professor of law at New York University and the University of the Pacific. Learn how to brief a law case, use the Socratic Method...and much more!

Tuesday, November 12
7pm - 8:30pm
UC Berkeley

Space is limited! Register today by calling
1-800-KAP-TEST or visiting kaptest.com/law

SCIENCE & TECHNOLOGY

THE DAILY CALIFORNIAN | WEDNESDAY, NOVEMBER 6, 2002



PHOTO/GARRETT HUBING

VISITORS TO 'OXYGEN Flute 2.0,' an interactive art exhibit located at the Hearst Museum of Anthropology on UC Berkeley's campus, listen to sounds produced in response to the carbon dioxide they exhale.

TECHNOLOGY, ART FUSE IN INTERACTIVE EXHIBIT

'Oxygen Flute 2.0' Turns Breath Into Sound

by JUSTIN LEE
CONTRIBUTING WRITER

Though you might not know it to pass by the Hearst Anthropology Museum on UC Berkeley's campus, a new interactive work of art located nearby has been busy turning greenhouses gases into moving harmonies.

"Oxygen Flute 2.0," which outwardly resembles a futuristic greenhouse, opened Monday night.

The exhibit was created by UC Berkeley practice of art and film studies professor Greg Niemeyer along with Stanford University music professor Chris Chafe.

A visitor stepping inside the exhibit's chamber first notices 58 stalks of live bamboo surrounding the central

viewing platform.

Each stalk, or culm, of bamboo, served a commemorative purpose.

"The motivation (for the installation) comes from the story where 58 Chinese illegal immigrants suffocated in a shipping container en route to the United Kingdom," Niemeyer said. "This incident is an example of how far our civilization has come today."

Visitors soon began to notice something else unusual within the chamber—computer-simulated flute music that changes in response to their own breathing.

A sensor continuously recorded fluctuating levels of carbon dioxide within the chamber while a computer presented data to visitors by altering the flute tempos and rhythms accordingly.

Several flutes presented real-time data while others presented carbon dioxide data recorded from previous visitors.

"We display a very large amount of data in real time, through music," Niemeyer said. "By hearing, we can perceive many different types of information without being confused."

The flute music was based on a computer simulation of 9,000-year-old bone flutes excavated from Jiahu, China.

A more subtle percussive sound within the chamber was actually a hydrophone recording of thousands of snapping shrimp at the Hopkins Marine Station in Monterey Bay, intended to symbolize the ocean's vast role in the carbon dioxide cycle.

Niemeyer and Chafe used aesthetic judgment when choosing these sounds—intending to express the themes of their work.

"What you hear is a quartet of flutes and a very subtle percussion section going on all the time," Chafe said. "This is the sound work that was directed by a composer's instincts, as opposed to a scientist's."

Niemeyer and Chafe also intended for the chamber to send a message about the greenhouse effect—which

See OXYGEN, page 6

Berkeley Women Among Influential Scientists

by R. TYLER HILLMAN
DAILY CAL STAFF WRITER

Three Berkeley women—two UC Berkeley professors and one a researcher at Lawrence Berkeley National Laboratory—were named to Discover magazine's list of the nation's top 50 female scientists.

Darlene Hoffman, of the Berkeley lab's nuclear science division, received the honor for a lifetime devoted to atomic physics.

One of her most notable achievements was the discovery of naturally occurring deposits of plutonium-244.

Hoffman was honored with the National Medal of Science in 1997, one of the highest honors an American scientist can receive.

Hoffman recalled experiencing a large degree of gender discrimination when she began her scientific career, and vividly recalls working alongside UC Berkeley chemist Glenn Seaborg.

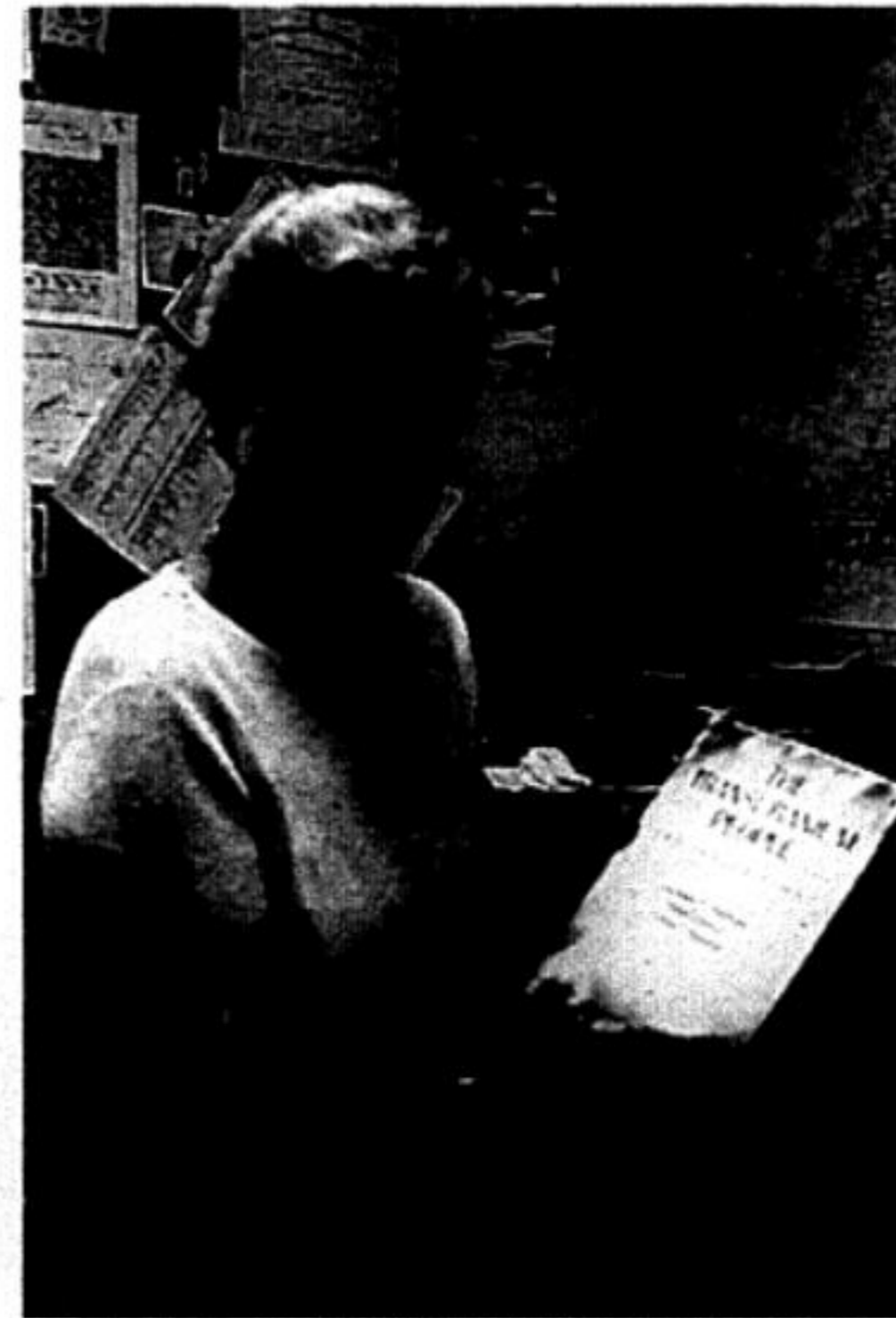
Electrical engineering and computer science professor Ruzena Bajcsy also appeared on Discover's list.

She currently directs UC Berkeley's CITRIS center, an interdisciplinary effort designed to foster information technology research.

UC Berkeley anthropology professor Margaret Conkey was named to the list for her contributions to the field of anthropological archeology and feminist critique.

Thirteen of the women on the list were from California, and 11 of those hail from the Bay Area.

The list will be published in the November issue of Discover magazine.



PHOTO/R. TYLER HILLMAN

DARLENE HOFFMAN was recently named one of the nation's 50 most influential female scientists by Discover magazine.

New Technique Swiftly Detects 'Mad Cow Disease'

Underlying Science May Help Fight Other Disorders

by JENNY DUONG
CONTRIBUTING WRITER

UC San Francisco scientists have developed a new test to detect the diseased proteins behind mad cow disease that may prove more rapid, accurate and sensitive than current methods.

Known as the conformation-dependent immunoassay, the test can identify infected cattle before symptoms appear, helping to prevent the spread of the disease to humans.

"The (test) essentially lowers the threshold for detection of bovine spongiform encephalopathies (mad cow disease)," said Jiri Safar, the lead scientist involved in the test's development, in a press release.

Prions are a type of protein typically found in humans and animals. Deformed versions of these proteins are responsible for mad cow disease.

The new test involves genetically engineered mice that are extremely sensitive to infection by the deformed prions.

It uses high-affinity antibodies, molecules oftentimes used by the body to combat invaders, to identify abnormal prions in brain tissue by locking on to the exact shape of the molecules.

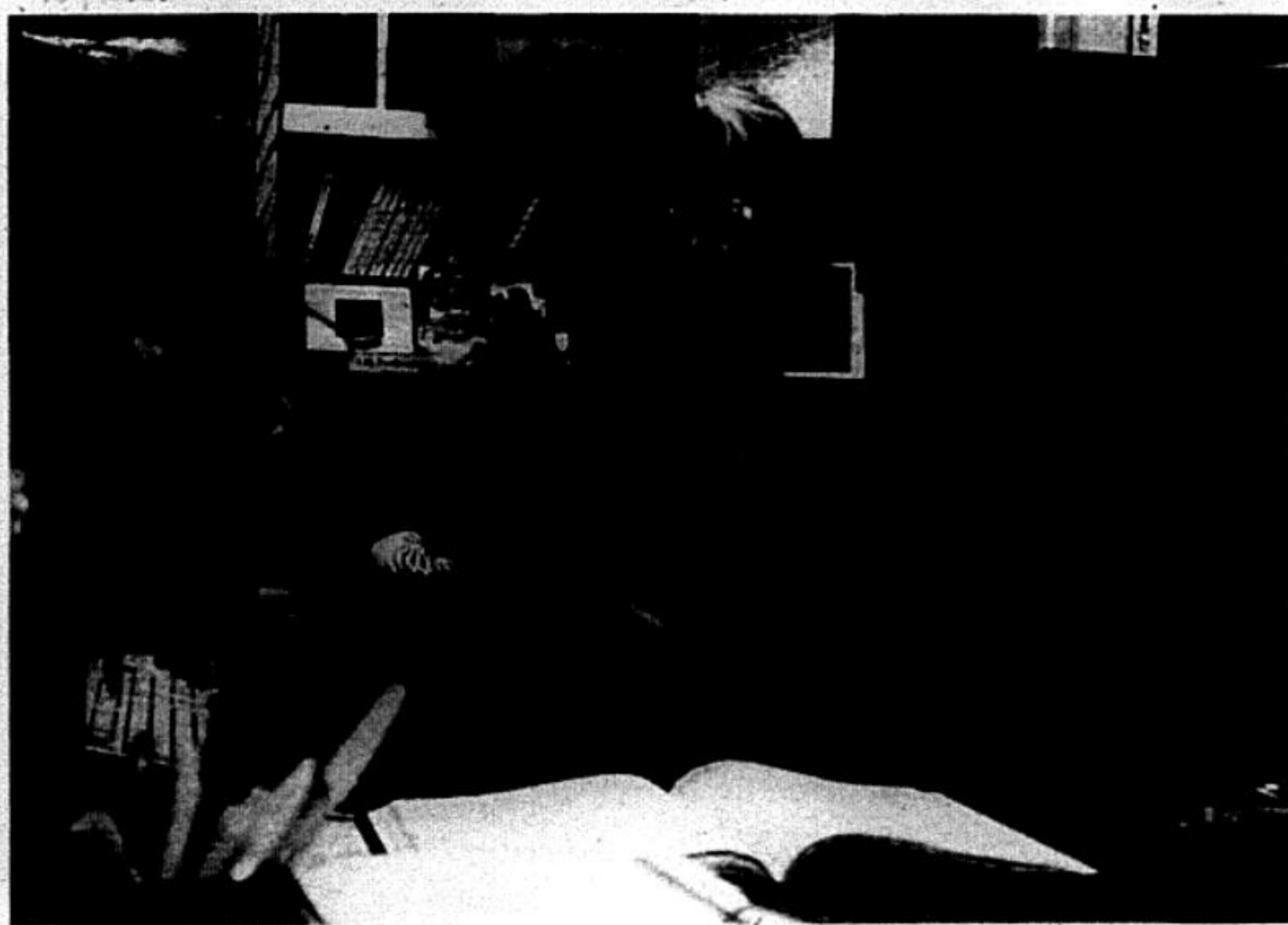
"Normal and infected prions only differ by shape," Safar said. "We must look directly at the shape of the molecule."

The test exposes an infected tissue extract in its natural state to the antibody, then monitors its reactivity.

The older, more conventional technique uses an enzyme to destroy normal brain tissue prions.

After they are destroyed, fluorescent antibodies that react with deformed prion proteins are added.

See TEST, page 6



PHOTO/R. TYLER HILLMAN

BERKELEY LAB SCIENTIST Mina Bissell explains how the three dimensional environment of cells influence their development.

Dying Cells: A New Approach to Combating Cancer

by CHARLES LEE
CONTRIBUTING WRITER

Mina Bissell of the Lawrence Berkeley National Laboratory may have taken a giant step closer to discovering a cure to one of the most common and incurable diseases—cancer.

Diseased and damaged cells are often subject to a process called programmed death, or "apoptosis."

Chemotherapy, a form of artificially-induced apoptosis, is a common treatment for cancer. In chemotherapy, doctors use specific chemicals that seek out and destroy malignant tumor

cells.

The technique isn't 100 percent effective at making cancer manageable. Some tumor cells will often just refuse to die.

Bissell attributed a surprising new factor to cells' ability to resist apoptosis—their structure and resulting polarity, which means looking in three dimensions.

"We developed a 3-D model in which we put cells in an abbreviated cellular matrix, which is the material

See CANCER, page 6

UC BERKELEY PROFESSOR DEVELOPS TOXIN DETECTION SYSTEM

by DAWN BEAHM
CONTRIBUTING WRITER

A UC Berkeley professor is working to create a portable chip capable of detecting biowarfare toxins in the field.

Over two years ago UC Berkeley chemistry professor Jean Frechet and researcher Frantisek Svec embarked on a project to develop a portable device capable of detecting chemical and biological toxins.

"Small concentrations of toxins can still be potentially harmful," Frechet

said. "Accumulation causing increases in concentration can increase the toxicity, although some toxins have strong biological activities at small concentrations to begin with."

Although chemical techniques for toxin detection already exist, the goal was to make these techniques portable so that analyses can be made on site and potential contaminations can be caught early—before biowarfare agents reach their targets.

"Essentially this will be something that will do everything in a single,

portable box," Svec said. "On one side you will drop a droplet of sample and on the other side you will get a display of the composition of that sample."

Eventually the chip will contain all three stages of chemical analysis—concentration, digestion and analysis.

"Imagine you have potentially harmful toxins somewhere, at low concentrations," Svec said. "The polymer in the microfluidic chip concentrates the toxins to a level where you can detect them."

The system is designed so that the compounds of interest will stick to it as liquid flows down a channel, concentrating the protein in the synthetic

See TOXINS, page 6

Student Candidates Lack Enough Support

STUDENTS, from front

get-out-the-vote drive.

Wozniak could not be reached for comment last night.

Both student candidates said they felt successful promoting student issues in this campaign. Katz centered his campaign on his experience working with the city to support building more affordable housing for students, mass transit programs for students, such as the Class Pass, and increasing safety.

Katz sat on the city's powerful Zoning Adjustments Board.

Weinberg, backed by Mayor Shirley Dean and the city's moderate faction, focused his campaign on incumbent Worthington.

Weinberg repeatedly said Worthington "paid lip service" to students but voted against some housing projects and backed off when it came to supporting the creation of a student-majority council district.

But both student candidates failed to get out enough of a student vote or attract a strong enough coalition to beat either Worthington or Wozniak. The last and only UC Berkeley student to win a council seat was graduate student Nancy Skinner, who first won as a progressive in 1984.

"I bet if students had a higher turnout, success would be much more likely," Weinberg said.

While students make up one quarter



ANDY KATZ checks early poll results last night at his campaign office. He will face Gordon Wozniak in a runoff for City Council District 8.

of Berkeley's residents, they are divided among several districts.

Students make up the largest proportion of voters in District 7, composing a slim majority.

Worthington bolstered his student-friendly credentials in this district by appointing numerous students to city commissions and has been known as extremely accessible to student. But he alienated some student government officials last year when he opposed plans to carve out a student-majority City

Council district on Southside.

ASUC leaders—including President Jesse Gabriel and Executive Vice President for External Affairs Jimmy Bryant—endorsed Weinberg.

Bryant credited a successful ASUC-led voter drive for Katz's large support.

"We have a voice, and we will let them know," Bryant said.

Rong-Gong Lin, II, is a staff writer and Kim-Mai Cutler is a contributing writer for *The Daily Californian*.

Feddersen Ready to Lead Bears Through Postseason Tourneys

FIELD HOCKEY, from back

was very close."

Junior midfielder Nora Feddersen agrees.

"It doesn't matter who we play," Feddersen said. "We know we have to win every game. If we don't win, we don't go further."

The Mountaineers are led by senior Emily Walls, who has scored four goals and 15 points on the season. Nonetheless, the Bears should fully expect to get to the later rounds.

Cal and Stanford have dominated the conference in recent years, meeting in the title game each of the last three seasons, with the Bears winning two of those. This year, Cal is 2-0 against the Cardinal.

"It's exciting," Onstead said. "It feels like we've come to expect to be one of the top teams in the conference every year."

Onstead relies heavily on the trio of Feddersen (10 goals, 26 points) and seniors Pooja Mehta (six goals, 15 points) and Michelle Wald (four goals, 10 points).

Feddersen is on a tear heading into the tournament. The native of Berlin, Germany has tallied points in ten of the Bears' last twelve games and

leads the team in scoring.

Onstead had plenty of praise for her star midfielder.

"It's one thing to be expected to play well," Onstead said. "But she plays up to it. I've never seen her have an awful game."

Despite her outstanding regular season, Feddersen understands that now is the time to step up her play.

"The most important part comes now," Feddersen said. "I think that if everyone brings to the field what they do best, we can go very far."

The Bears won last year's NorPac tournament, but only got as far as the second round of the NCAA tournament, where they fell to Syracuse in a 2-1 overtime battle.

The rest of tomorrow's tournament games are Southwest Missouri State (7-10, 3-2) vs. Pacific (3-12, 2-4), Radford (7-10, 4-1) vs. St. Louis (2-16, 0-6), and Stanford (8-10, 4-2) vs. Davidson (7-12, 3-3).

If the Bears advance past the NorPac tournament, they will face the added obstacle of having to play in a play-in against the Patriot League champion in order to get one of the 16 spots in the NCAA Tournament.

Cell Polarity Influences Fate

CANCER, from page 5

outside of cells," Bissell said. "We now have shown that many genes and pathways behave very differently in three dimensions than when they do in two."

The research conducted by Bissell and her team showed that malignant tumor cells that manage to mesh themselves within the body's natural cell structure—in a glandular cell—are more resistant to drug-induced apoptosis.

Some malignant tumor cells exhibit this apoptosis-resistant property without actually being arranged into glandular cells. These cells acquire the virtue of being coated with a specific cell-adhesion integrin which almost mimics being arranged into a glandular shape.

University of Pennsylvania professor Valerie Weaver was a co-author of the study, which was published in the September 2002 issue of the journal *Cancer Cell*.

Traditional medical doctrine states that many tumor cells erupt as a series of gene mutations in built-in tumor suppressors, Weaver said.

Bissell and Weaver's findings have nevertheless faced skepticism.

"The relevance of the 'newer integrative perspective' is quite powerful but considering the scientific community's current honeymoon with the genome project and the single molecule perspective our ideas are not always met with great enthusiasm," Weaver said. "So it has been rather difficult over the years to convince others of the importance of our work."

If cells are indeed more susceptible to drug-induced apoptosis based on their polarity, then new chemotherapy methods could be developed to more effectively target cancerous cells.

"I believe that to understand tumor behavior we must think about things from an integrated perspective and consider tissue organization and tissue microenvironment as key elements in tumor progression particularly with respect to generating better cancer therapies," Weaver added.

Both Weaver and Bissell intend to further investigate the importance of tissue organization as it relates to normal and abnormal cell behavior, but Weaver intends to simultaneously focus on apoptosis-resistance.

Polymer Used to Concentrate Toxins

TOXINS, from page 5

polymer.

After the toxin is concentrated to the point where it can be detected, another liquid is passed through to dissociate the toxin from the polymer. The liberated toxin can then flow freely and run through an enzymatic "trypsin reactor."

"The trypsin digests each protein

into smaller peptides, shorter amino acid chains," Svec said.

A separate polymer inside the chip then separates these peptides according to molecular properties like size and charge.

"Each protein can then be fingerprinted by these smaller peptide chains," Svec said. "The number of toxic proteins is very limited, so you can easily detect which toxin it is from these peptide fingerprints."

The final component of the microfluidic chip would incorporate a computer chip capable of storing peptide fingerprint data and identifying the unknown toxin.

Art Highlights Greenhouse Effect

OXYGEN, from page 5

manifests itself quickly to visitors in the form of intense heat inside the exhibit.

The greenhouse effect is a form of global warming caused by solar heat trapped near the planetary surface by atmospheric gases such as carbon dioxide.

"This growth chamber displays the greenhouse effect," Niemeyer said. "Our main point is to directly display a breathing person's effect on the environment."

The professors hoped that visitors to the installation will become more cognizant of pressing environmental issues.

"We're both very personally concerned with environmental issues on a planetary scale," Chafe said. "The installation lets you have a look at human influences and interactions on a local scale."

Although bamboo metabolizes carbon dioxide and produces oxygen particularly effectively, the 58 stalks within the chamber are far from sufficient to meet the needs of even a single visitor.

"We would need a field of 1,000 acres of bamboo per person (per day) in order to sustain breathing," Niemeyer said. "If we were in the chamber for 12 hours, we would probably suffocate."

Niemeyer and Chafe made a point of noting that in the past 200 years, the level of carbon dioxide in the atmosphere has increased by 300 to

400 percent, which they blame on the byproducts of the Industrial Revolution.

Visitors inside the chamber were capable of temporarily raising carbon dioxide readings to nearly 70 times those of average Berkeley levels.

The long-term consequences of continuing rises in global atmospheric carbon dioxide levels are dire, Niemeyer said.

"The only cause we know for the increase of carbon dioxide is human activity," he said. "We will die much sooner from overheating than we will from lack of oxygen."

Niemeyer and Chafe both hoped that visitors will leave the exhibit with a renewed sense of appreciation for the environment.

"The final component (of the installation) is one of intense beauty and of the generosity of nature," Niemeyer said. "The final level is one of hope and privilege."

At least several observers on opening night seemed to have grasped the intended message.

"I'm sort of aware that it's all a cycle that comes back to you," said Lawrence Wang, a visitor to the installation. "It's a little delayed reaction in there, but I think it's pretty clear."

The original "Oxygen Flute" was commissioned in 2000 and displayed in at the San Jose Museum of Art.

The new version features deepened flute sounds, as well as tomato seedlings meant to symbolize the tomato crates that the Chinese immigrants were hiding amongst while inside the shipping container.

The installation was funded by a grant from the Intel Corporation.

"Oxygen Flute 2.0" is being hosted by UC Berkeley's Hearst Museum of Anthropology.

Clerical Union Refuses UC Contract Offer

The UC clerical union rejected a new contract offer last week, the second union to reject a UC settlement offer in the space of two days.

Coalition of University Employees officials said they rejected the offer because it failed to address the union's demands.

"It was the exact same offer as they had made previously, which we had rejected," said Margy Wilkinson, chief negotiator for the union. "I couldn't figure out why they thought we would accept it."

The contract offer, which followed a bargaining session last month, could have ended the two-year negotiation stalemate.

UC and union officials will return to the bargaining table Nov. 13 and 14, but another breakdown may lead to state intervention.

UC officials said the outcome of the negotiations will depend on the union's offer.

"Whether this leads to settlement or impasse depends largely on the sub-

stance of the union's offer and their willingness to compromise," said UC spokesperson Paul Schwartz.

Unions can legally strike over contract negotiations if the Public Employment Relations Board—the state board which oversees labor relations—announces an official impasse. The board would then send a state fact-finding team to evaluate negotiations.

The union's UC Berkeley chapter plans to announce the results of another strike authorization vote Nov. 13—the first day of the next round of negotiations.

Union officials cited ongoing negotiation problems with UC officials as the impetus for the vote.

The American Federation of Teachers, which represents UC lecturers, rejected a UC contract proposal Wednesday, citing grievances similar to the clerical union.

UC officials and the lecturers union will resume negotiations sometime during the week of Nov. 18, Schwartz said.

—Emma Schwartz

Emma Schwartz covers labor. E-mail her at labor@dailycal.org.

Malformed Proteins Cause Disease

TEST, from page 5

Some portions of abnormal prions are not affected by protease, and thus evade detection—limiting the effectiveness of the technique.

The new test will be able to identify smaller levels of malformed prions than previous methods, which only detect fragments of infected prions.

The new immunoassay test is also able to yield results faster, as it requires only six hours to complete.

Comparatively, the older technique typically takes almost 400 days.

The new test will be capable of

matching the sensitivity of the traditional method while also rapidly detecting infectious prions.

For UCSF scientists, the concepts underpinning the new test can be applied widely to other neurodegenerative diseases.

The treatment of afflictions like Alzheimer's disease and Creutzfeldt-Jakob disease that also involve deformed prion proteins may be improved by this new research.

The test is a first step towards early detection of these other chronic wasting diseases in humans and animals.

Experiments thus far have been very accurate and effective at detecting diseased proteins in both infected and uninfected cattle.

The ultimate goal of the immunoassay test development effort would be to apply the technology to test infectious proteins while animals are still alive.

Get Daily Cal headlines e-mailed to you

www.dailycal.org

The Daily Californian

CLASSIFIEDS

548-8300 x211, x212
 classics@dailycal.org
 Fax 510-849-2803
 Mon-Fri, 10am-5pm

05 LEGALS

NOTICE OF PETITION TO ADMINISTER ESTATE OF:
LEWIS G. LEE AKA LEWIS GIM-TIN LEE
CASE NO. 256233-9

To all heirs, beneficiaries, creditors, contingent creditors, and persons who may otherwise be interested in the will or estate, or both of LEWIS G. LEE AKA LEWIS GIM-TIN LEE.

A PETITION FOR PROBATE has been filed by LILY T. LEE in the Superior Court of California, County of ALAMEDA.

THE PETITION FOR PROBATE requests that LILY T. LEE be appointed as personal representative to administer the estate of the decedent.

THE PETITION requests authority to administer the estate under the Independent Administration of Estates Act. (This authority will allow the personal representative to take many actions without obtaining court approval. Before taking certain very important actions, however, the personal representative will be required to give notice to interested persons unless they have waived notice or consented to the proposed action.) The independent administration authority will be granted unless an interested person files an objection to the petition and shows good cause why the court should not grant the authority.

A HEARING on the petition will be held on 12/17/02 at 9:30AM in Dept. 23 located at 1221 OAK ST., OAKLAND, CA 94612

IF YOU OBJECT to the granting of the petition, you should appear at the hearing and state your objections or file written objections with the court before the hearing. Your appearance may be in person or by your attorney.

IF YOU ARE A CREDITOR or a contingent creditor of the deceased, you must file your claim with the court and mail a copy to the personal representative appointed by the court within four months from the date of first issuance of letters as provided in Probate Code section 9100. The time for filing claims will not expire before four months from the hearing date noticed above.

YOU MAY EXAMINE the file kept by the court. If you are a person interested in the estate, you may file with the court a Request for Special Notice (form DE-154) of the filing of an inventory and appraisal of estate assets or of any petition or account as provided in Probate Code Section 1250. A Request for Special Notice form is available from the court clerk.

Attorney for Petitioner
F. THOMAS HUSTER
 309 4TH AVENUE #200
 SAN FRANCISCO, CA
 94118-2405

11/05/02, 11/06/02, 11/12/02
 CNS- 461460#
 DAILY CALIFORNIAN

NOTICE OF SALE OF INTENTION TO SELL REAL PROPERTY
 (Probate code Sections 10300 and 10304)

In the Superior Court of the State of California in and for the County of ALAMEDA.

In the Matter of the Estate of MARIAN NANCY BISBIGLIA, deceased.

NOTICE IS HEREBY GIVEN that the Administrator of the above estate will sell at private sale on the day and at the time hereinafter mentioned, to the highest and best bidder, on the terms and conditions hereinafter mentioned and subject to confirmation by the above-designated Court all the right, title, and interest of the captioned estate in and to real property located at 2340 8th Street, in Berkeley, California.

The conditions of the sale are as follows:
 A. The property is being offered "as is," without condi-

05 LEGALS

tion, representation, warranty or covenant of any kind, express or implied. All submitted offers must strictly comply with the terms herein. Prospective buyers should not submit offers containing any additional terms. The property will be sold for cash or for a combination of cash and credit.

B. No personal property is to be included.

C. Sealed bids must be mailed or delivered to: JOSHUA BISBIGLIA, c/o EVE T. CONTENTE, Attorney at Law, 1493 Solano Avenue, Albany, CA 94706, marked "SEALED BID, ESTATE SALE, OPEN ON BID DATE ONLY." Bids will be received until the time set for said sale, to wit: NOVEMBER 13, 2002, 9:30 a.m., in Department 23 of the Alameda County Superior Court, located at 1225 Fallon Street, Oakland, CA 94612.

D. A Deposit of ten percent (10%) of the amount bid must accompany the offer. Deposits must be made payable to the above-named estate. Balance to be paid on or before forty-five days after the confirmation of the sale by the above Court.

E. Subject to the right of the Administrator to accept or reject any or all bids received. If no acceptance offer is received at the bid opening, offers may be considered on a first come, first served basis.

F. Arrangements for the inspection of said property may be made through Joseph Bisbiglia, Administrator of the Estate of MARIAN NANCY BISBIGLIA, c/o Eve T. Contente, Attorney at Law, 1498 Solano Avenue, Albany, CA 94706, tel (510) 528-1411.

G. Commission, if any, subject to approval by the Superior court and to be paid only out of proceeds of sale.

H. No signs are to be posted, except as authorized in writing by the Administrator.

I. Fees for examination of title, inspections relating to sale, recording of conveyance, transfer taxes, escrow charges, and any title insurance policy shall be paid entirely by purchasers.

J. Subject to tenants rights under local Rent Control Ordinances, if any.

K. Information given herein is believed to be correct, but there is no warranty expressed or implied as to the correctness of any statements herein set forth.

Dated: October 22, 2002
 Eve T Contente
 Attorney for Administrator
 Publish: 11/1, 11/6, 11/12/02

15 NOTICES

Fraternities • Sororities
 Clubs • Student Groups
 Earn \$1,000-\$2,000 this semester with a proven Campus Fundraiser 3 hour fundraising event. Our programs make fundraising easy with no risks. Fundraising dates are filling quickly, so get with the program! It works. Contact Campus Fundraiser at (888)-923-3238, or visit www.campusfundraiser.com

HELP WANTED

Get Paid to Help Others Create Families
Sperm Donors Wanted \$50 per acceptable sample 510.841.1858
 We're a friendly non-profit located 3 blks from Cal. If you're healthy, aged 18-40 and can make weekly visits for a year, call us!

Artist/photographer seeks attractive women models 18+ for fine art photo and erotica. Great \$\$\$. Safe, friendly, sensual, magical, seductive passion. (415) 721-2807

BARISTAS Top pay for Special Event. Call Gary at 510-527-7330

30 HELP WANTED

BARTENDERS Make up to \$300/Shift. No exp. required. Great College Job. Call 800-806-0085 ext. 1235

Become An Escort. Have fun, gain valuable experience, enjoy a flexible, part-time schedule, and earn \$2500 per week. Please call Michele at 415-661-9570. You will be pleasantly surprised!

BROKE FOR X-MAS?

PT positions available for seasonal work. High starting pay and scholarships are possible. Call M-Th, 12-5pm, 644-2888 or apply online, workforstudents.com/cal

EAST INDIAN EGG DONOR NEEDED

\$50,000 compensation
 Highly successful, professional East Indian couple, need an egg donor of East Indian descent, who is attractive and intelligent (SAT score of 1400+) with a good personality. Privacy is guaranteed. Please contact our agent: Darlene@aperfectmatch.com www.aperfectmatch.com 800-264-8828

FEMALE MODELS wanted for casual work. Good pay. Call 650-333-7134

Get Paid For Your Opinions!
 Earn \$15-\$125 and more per survey!
 www.dollars4opinions.com

HOSTESS/HOST/Bar Asst. for Sherhna Restaurant on College Ave. wkday & wkends 11:30am-2:30pm, or 5-9:30pm. Call Joseph & Ed bwn. 5-6 pm 883-1777.

HOUSEKEEPER needed perf. for student. Oak/Berk. hills. Must be detailed and reliable. flex. hours. 3+ days/wk. 812-7467

N BERKELEY salon looking for models for advanced hair cutting and chemical classes. Small fee required. 644-2444

OVUM DONORS NEEDED

\$10,000 (PLUS ALL EXPENSES)
 We are seeking women who are attractive, intelligent, between the ages of 18-29, physically fit and maintaining a healthy lifestyle. If you have a desire to help an infertile family and would like more information please contact us.
 Must be college student or college graduate.
 1-800-264-8828 or 1-619-464-1424
 Email: darlene@aperfectmatch.com www.aperfectmatch.com

PART-TIME telemarketer needed for physician staffing service. flex. schedule 20 hrs/wk, relaxed office, no hard sell. Terrific earning potential. (draw/commission). Close to UCB. Call Larry 601-7676

TELEMARKETERS loc. mortgage brokerage firm in Walnut Creek. Start \$10/hr + bonus. Flex hours. 925-330-3867

TUTORS - ALL SUBJECTS, ESP. MATH, PHYSICS, ENGLISH \$20-25/hour. Call 925-256-9254 or e-mail: applications@tutorexperts.com

VOLUNTEERS NEEDED to work in bookstores of the friends of the Berkeley Public Library 981-6152

WOMEN Be An Angel!

Donate Eggs!
 If you are 21-30 yrs, healthy, bright & responsible...
 Family Fertility Center
 1-800-939-6886
 Generous Compensation
 ALL NATIONALITIES NEEDED

SERVICES

ACADEMIC EDITING Ph.D. Dissertations. Essays. Articles. MA Theses. Books. APA Specialty. Vitalee, MA. 510-234-0057

ACADEMICWRITING.COM Edits, rewrites 10 years exp. VISA/MC. Dave, 601-9554

LOW REFERRALS We can help. Good credit/bad credit. 1-888-213-5602

PROFESSIONAL EDITOR/WRITER Ph.D. Academic or creative. (510) 234-0095.

TUTORING in essay composition. English professor. Low intro rate. 510-559-8442

WRITER'S RESCUE- Finest editing: Word processing: Video/Audio Tape Transcribing: Marcy 848-4990.

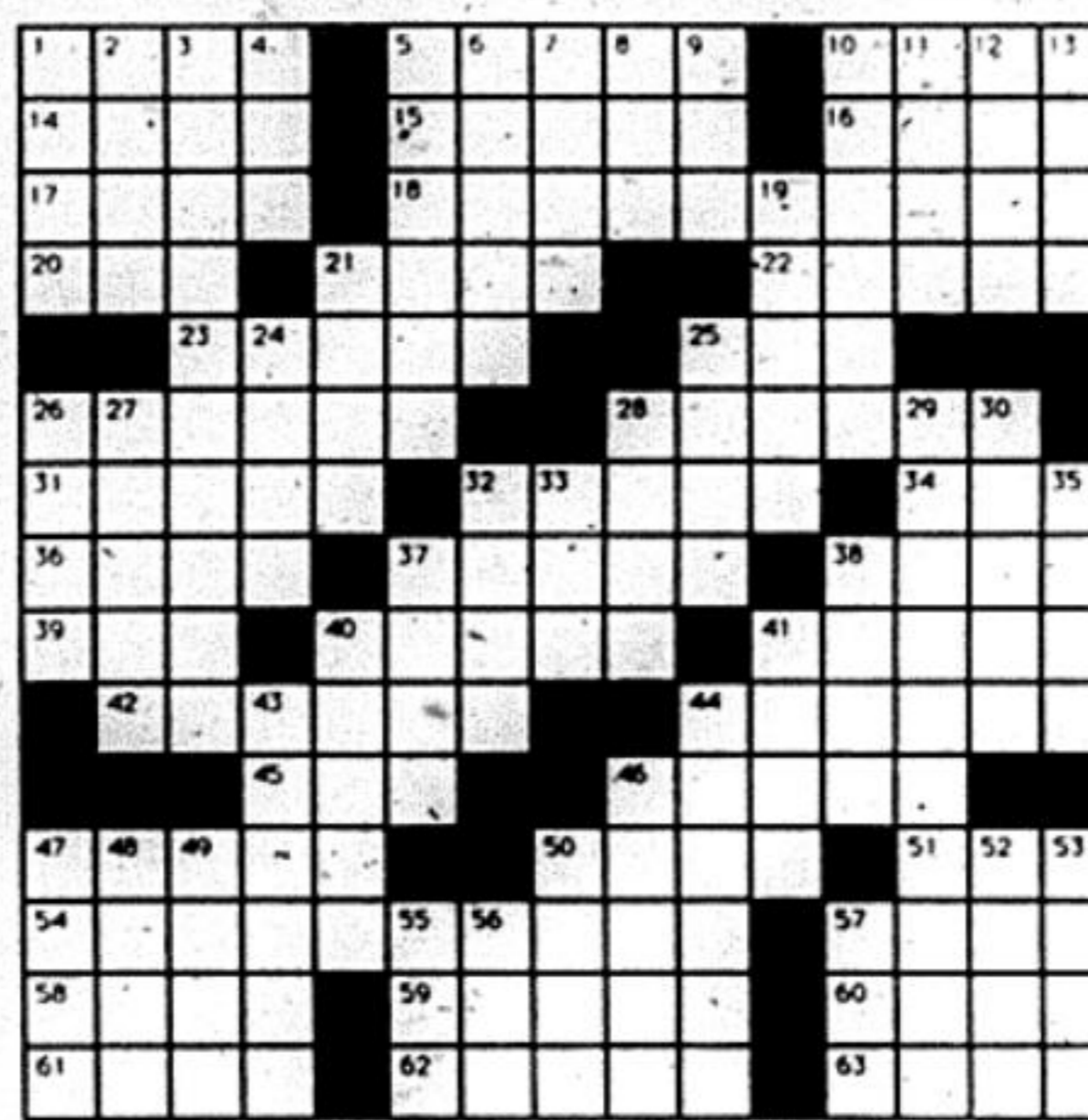
BODY, MIND & SOUL

STRESS MANAGEMENT: 2hr MASSAGE \$75 intro rate. profound professional care no lohaus.cmt/www.alOmy.com/486-8798

INSTRUCTION

FUN CHRISTMAS CAROLLING Voice Classes or Private Lessons www.MelodyLineStudio.com #527-2402

DAILY CROSSWORD



- DOWN**
- partidge in a pear tree.
 - Clumsy one and depend
 - Downhill glider
 - Switch positions
 - Make fun of
 - American Indians
 - Fails to keep up
 - Wednesday
 - Nevertheless
 - Bids
 - Depressed
 - Phooey!
 - States
 - Examinations
 - Story
 - Rising star
 - Bread spreads
 - Latvian capital
 - Throw forth lava
 - 1st, 2nd or 3rd
 - Like evidence allowed in court
 - Intended

- Hemmed in by
- Math. procedure
- Suffixes for respond
- Toward shelter
- infied protector, during a rainstorm
- TV's Green
- Coal or gas
- Cerify by oath
- Monsters
- Ports
- Earth
- Competent
- Purposes
- American Beauty
- Partial amount
- Furniture wood
- Undermine
- Country est in 1948
- Word whose homonym has no a

ANSWER TO PREVIOUS PUZZLE

ANDES SPOT ATTU
 CARAT HEAR DOES
 TIARA INFATUATE
 SLY BLEED ELDER
 SLED TRET
 BALLET ROAM BEG
 ELEE AERIE BLI
 REDWHITEANDBLUE
 ERG ABASH ALIDA
 ATE RILE CARBEN
 BASE WARE
 IOTAS MART FRY
 BLOSSOMED IDEAS
 AIRS LATE SURGE
 ROTO DEER TONER

ACROSS

- Singer's range
- Tarry
- Bettor's concern
- One of two twelves
- Obliterate
- song; cheapy
- Names
- Privilege of the first to reach a four-way stop
- From Z
- Traditional gifts for dad
- Lets
- FDR and JFK, to Harvard
- Jolt
- Feast
- Soothing resin
- Hot under the collar
- Monroe's follower
- Five cees
- Weaponry
- Wrong
- Govt. employee
- Jungle creature
- Kicking's partner, in phrase
- Dim
- Drew on a transparent sheet
- Pops
- Three in Tivoli
- Shows great emotion
- Use a pan
- Foreign coin
- Adherent: suff.
- Ideas one can't get rid of
- Orchestra instrument
- Lands off the coast of France
- Fine personal quality
- mater
- For fear that
- Newspapers & magazines
- Smell

DAILY HOROSCOPE

by SYDNEY OMARR

ALFRED KINSEY: This Cancer native was a relatively obscure psychologist when he published "The Kinsey Report," which made him the leading authority on the sexual male and female. Kinsey was controversial, his reports became a best seller, and some insisted they provided information that had long been suppressed or ignored. His writings caused many to raise their eyebrows.

ARIES (MAR. 21-APR. 19): Your philosophical concepts will arouse more interest than originally anticipated. You gain added admiration as result of publicity, publishing. Romance involves journey.

TAURUS (APR. 20-MAY 20): Give full play to intellectual curiosity. You learn more about money and how it gets that way. You exude aura of personality, sex appeal. Virgo native plays prominent role.

GEMINI (MAY 21-JUNE 20): Lie low, be unobtrusive, and make intelligent concession to family. Focus on where you live, marital status and income potential. People will comment on your voice; it is melodious.

CANCER (JUNE 21-JULY 22): Find different ways of getting job done. Speed up production, tie loose ends. Avoid self-deception where romance is concerned.

Recognize flaws rather than overlook them. Pisces represented.

LEO (JULY 23-AUG. 22): Attention revolves around creativity, variety of "feelings." You will be asking, "Is it love or lust?" Find outlet for "hidden talents." Key is to organize priorities and to accept responsibility.

VIRGO (AUG. 23-SEPT. 22): You reach conclusions concerning building material and relationship. Temporary separation should not cause bitterness. Reunion will occur sooner than you think; it will be exciting, dramatic.

LIBRA (SEPT. 23-OCT. 22): Highlight versatility without scattering your forces. Don't follow others. Make personal appearances and begin project. A "different" kind of relationship will stir creative juices.

SCORPIO (OCT. 23-NOV. 21): Focus on special collections, antiques and significant dialogue with older individual, including parent. Emphasis also on living quarters, partnership and marriage. Cancer native involved.

SAGITTARIUS (NOV. 22-DEC. 21): Popularity hits peak. Cycle high; you will be at right place at crucial moment. Have luck in matters of speculation by sticking with No. 3. You might become involved in fashion world!

CAPRICORN (DEC. 22-JAN. 19): What you feared

will turn out to be to your advantage. You will not only beat the odds, but you could beat the game! You will be dealing with temperamental Leo, Scorpio individuals.

AQUARIUS (JAN. 20-FEB. 18): Many of your hopes and wishes come true! Warning: Don't wish for more than you can handle. You learn more about what you need and what is fantasy. You will win friends and influence people.

PISCES (FEB. 19-MAR. 20): Family member is due for unique honor. You will want to be present; stick close to home. You receive gift of luxury item; it could be start of something big. Libra plays key role.

IF NOVEMBER 6 IS YOUR BIRTHDAY: You have unusual voice, sense of harmony and color-coordination. Family means much to you; you undergo sacrifices to keep loved ones together. Taurus, Libra and Scorpio individuals play major roles in your life, could have these letters in names: F, O, X. During December, there will be domestic adjustment that could include actual change of residence, marital status. Financial problems could be erased.

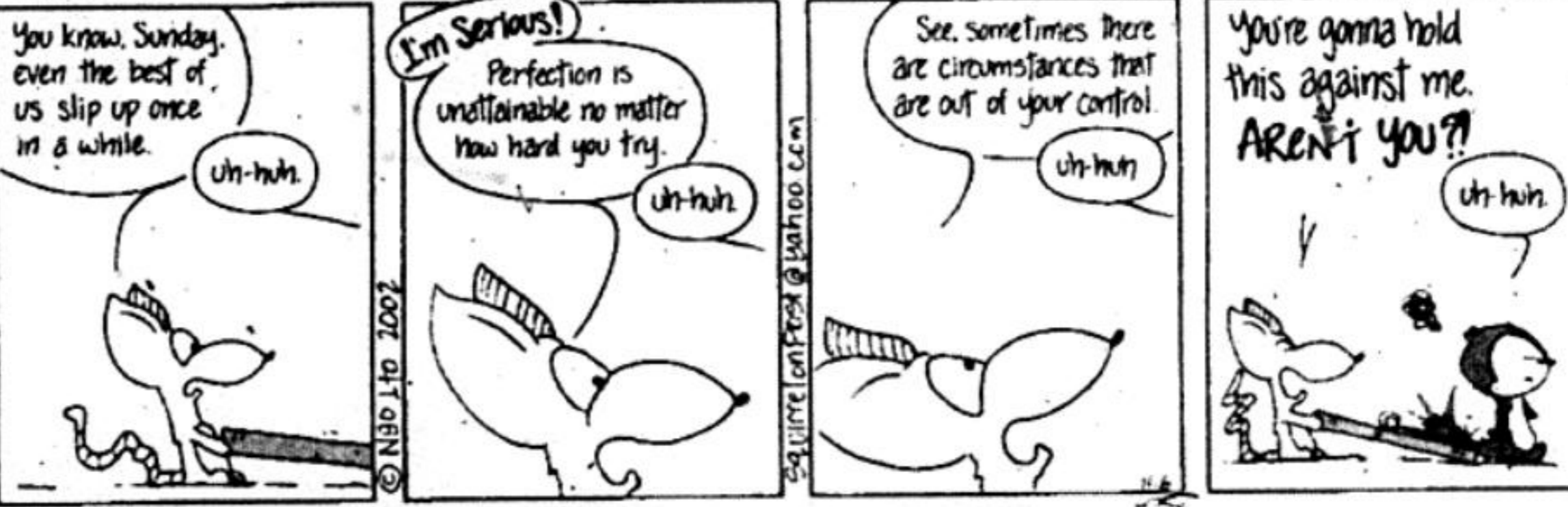
© 2002 Tribune Media Services Inc.

NUKEES



by DARREN BLEUEL

SQUIRREL ON POST



by NGO ITO

ITEMS FOR SALE
 BED all new PILLOWTOP Mattress + Box in plastic w/warranty cost \$600 sell \$250 510-550-4162 can deliver!

RENTALS
 LARGE SUNNY two bedroom w/ a balcony and security garage completely redone \$1295 per month available immediately 1919 Dwight Way 287 5674.

RENTALS
 \$1095 1-BD pool vu, jacuzzi, sauna, gym, parking, 51 to UC, walk to BART, pay electric only. lease no pets 510-843-3152

RENTALS
 NEAR CAMPUS! Move-In by 11/20 to receive \$800 OFF 2BR or \$300 OFF 1 BR. 5 pools, 4 jacuzzis, tennis, racquetball and more! Enjoy resort living just 20 min from campus. CALL TODAY! 510-223-2000.

RENTALS
 \$750/MO 1 furn. rm to share/rent in large No. Berk. House. (4bdms/3bths, fireplace) UCB Female/Int'l Grad Stud pref. Walk to campus. Close to pub., trans, shops, restaurants. 1st+dep. (510) 843 6519

RENTALS
 2BD on MLK. 2 levels. 2 car parking, near BART & freeway \$1,385 415-336-1125

RENTALS
 3 UNFURNISHED rooms in 5-woman Berk house for mature lesbians or celibates: 2 rms, \$650 each; 1 rm, \$540 843-0680

SHARE RENTALS
 1 BDRM available, newly remodelled. Nice neighborhood on Channing, quiet \$625 female preferred. 510-387-6561



SPORTS

BERKELEY, CALIFORNIA

WEDNESDAY, NOVEMBER 6, 2002

WWW.DAILYCAL.ORG/SPORTS

Whine Cellar

Dressing Down Sports World's Freaks, Geeks



DAN HODES

Here in the Whine Cellar, we always have room for an actual whine. Like how I took a day trip to Reno this past weekend and was doing just fine at the pai gow table until Mr. Enlightenment to my right blurted out to our Mexican dealer, "Hey, maybe that next card could be green for ya!" Needless to say, all karma was gone, and I dropped four bills like they were hot. Donations are, of course, always welcome.

Proving That The Only Bizarre Voters Aren't Deciding That Ohio State Is Better Than Miami: The women's soccer team was ranked 17th, lost, and is now ranked 15th.

Far And Away My Favorite Name In Cal Sports: When you hear "Attila Banhidly", don't you think he should be invading the Moors or some such?

Given My Performance In Reno, This Is No Surprise: Since becoming the official team of the Whine Cellar, the Cal women's volleyball squad has won just three of its last 11 matches.

The Whine Cellar Shocker of the Week: The Cal women's swimming home page features a picture of someone not named Natalie Coughlin.

Some Ramblings As Our Fighting Tedfords Head South: Suddenly, that Michigan State win isn't looking so important. The Spartans may be the worst team to ever be ranked 15th in the country. Then again, those SCOTIP (that's Southern Cal Officials-In-Their-Pockets) are now ranked No. 9, so I'll be careful with superlatives. We did not play last weekend, so, uh, Go Bears!

Arizona, Oregon, UCLA, Cal?: I think I liked it better when nobody thought the Bears were any good in men's basketball.

And Entering, I Believe, His Ninth Year Of College, At Guard, For UCLA: Jon Crispin still has eligibility?

The Only Thing Worse Than Watching The Cameron Morons Celebrate Another Duke Title: The Blue Devil women's basketball team is the preseason No. 1 and, quite honestly, has by far the best team in the country.

Nobody, And I Mean Nobody, Is Ever Surer Of His Opinions: Let's see if Trev Alberts can say "Iowa is the best team in the Big Ten" a couple hundred times next week as well.

Funny How In The Worst Trades Of All Time Discussion, This One Never Gets Mentioned: Brett Favre for a draft pick.

For Their Next Move, They'll Play With No Goalie: The New York Rangers, 4-8-2-0-0 as of this writing, took the only logical move—benching best and highest-paid Eric Lindros.

The Knicks Sure Are Collapsing In A Lot Of Fourth Quarters, Eh?: Let's see if David Stern brings back the old envelope system to ensure LeBron James plays next year.

And Finally, Regardless Of What Happened In Yesterday's Election, One Immutable Truth: Whoever sponsored that ridiculous coffee initiative should be unorganically ground up and served at Dunkin' Donuts.

Promising Bears Swinging Ahead

by ELI MILLER
CONTRIBUTING WRITER

In today's era of big-ticket free agency, new professional sports teams can become successful much faster than in years past.

The No. 11 Cal women's golf team, which has not shelled out millions of dollars for any key signings lately, has added two impact freshmen and tapped a wealth of international talent.

However, the Bears' quest to become a contending program has been a gradual one.

Now in its eighth year of existence, Cal is poised to challenge for the Pac-10 title.

"For three or four years, we've known that we're a really solid program," says head coach Nancy McDaniel, the only coach the Bears have ever had. "This year we've really elevated ourselves."

The accomplishments speak for themselves—three wins in four starts, a threepeat at the Oregon State Invitational and six golfers with stroke averages less than 76. Each achievement is a first for the Bears.

The most disappointing part of Cal's season so far is that the team must wait until February to resume tournament play.

The Bears' success story starts with McDaniel.

A decorated player in her own right, she was an All-American at Washington and enjoyed a professional career that took her around the world. She spent time on the Women's European, Ladies-Asian, and Players West tours.

However, her quest of reaching the LPGA Tour was never met.

"I gave myself a five-year plan, and if I wasn't at the level I wanted to be, then I would pursue other options," says McDaniel.

One of those other options appeared as a help wanted ad in Golf World



STAFF/ROB KATZER

RIA QUIAZON, Vikki Laing, Sophia Sheridan and Mika Takayama (right to left) have led Cal to its best fall ever.

magazine in 1994.

Cal was looking for a coach for its new women's golf program, and McDaniel decided to apply.

"There was a lot of interest for the position but my interview came at a time when there was still an opportunity for the job," remembers McDaniel.

The Bears showed flashes of promise in their early years, but were unable to play their way into the NCAA Tournament.

Cal earned its first NCAA berth in the 2000-2001 season, the same year McDaniel was honored as Pac-10 Coach of the Year.

Once the Bears discovered what was necessary to make it to the NCAA Championship, they sharpened their game and their focus. Cal won three times last year and established school records in almost every major statistical category.

The first half of the 2002-2003 season has shown the rest of the nation, as well as the team itself, that Cal is for real.

"One of our goals was to win three or four tournaments in the fall," says senior co-captain Vikki Laing. "To carry out that goal is amazing."

Perhaps the most impressive accomplishment this year, and arguably in the history of the program, was winning the Stanford Pepsi Intercollegiate, which featured one of the strongest fields of any fall event, with No. 1 Arizona and then-No. 2 Vanderbilt.

"We had won tournaments with good fields, but before Stanford we hadn't won a tournament with a major field," says McDaniel.

The performances of Laing and senior co-captain Ria Quiazon enabled both golfers to finish in the top five.

"Ria and I have played Stanford's course so many times," Laing said. "To beat some of the best teams in the country was a big turning point."

Quiazon described her final round as one of the crowning achievements of her collegiate career.

"It feels good," says Quiazon. "This one is just really special because it's at Stanford."

The win at Stanford catapulted Cal into its final tournament of the fall, the Kent Youel Invitational in Kapolei, Hawaii. The Bears blew away the field amid the strong trade winds, beating No. 24 UCLA by 18 shots.

In winning its third tournament, Cal once again rewrote the record books, this time breaking the 54-hole team scoring record by 12 strokes.

Freshman Sophia Sheridan led the field by one shot heading into the final round, but stumbled with a four over-par 76. She still finished fifth.

"I've never been in the top 10 of any United States tournament," says Sheridan, originally from Guadalajara, Mexico. "I was really nervous."

Sheridan is one of two freshmen in Cal's starting rotation, which runs seven players deep. The other newcomer is Mika Takayama, who is third on the team with a 74.6 stroke average. "I was having a little trouble at first,"

says Takayama. "But after a while everything got a little easier and I started settling down."

McDaniel thinks so highly of Takayama that she believes the freshman from Alameda High School could have played for the Bears when she was a junior golfer.

Together, Takayama and Sheridan compose arguably the best freshman class the team has ever had.

"The freshmen are pretty much right there with us," says Laing. "It's great for the seniors because it takes a lot of pressure off us."

Cal's ability to recruit strong golfers to such a young program is a testament to the effort of the coaching staff and the opportunities provided on campus.

"We've tried to find people who love Cal and want to stretch their independence," says McDaniel. "We have been blessed with great, mature players."

This year's squad can be seen as a microcosm of the growth of golf itself into a global game. Three of Cal's players came directly from outside the United States, as far east as New Zealand and as far north as Scotland.

Among a team of 10 players, eight different languages are spoken fluently, including Tagalog, Korean, German and Japanese.

"Players have had fun on road trips trying to teach other words from different languages," says McDaniel.

With all of the success Cal has enjoyed in the fall, it is hard to believe that the Bears have yet to crack Golfweek's top 10 rankings.

Arizona, Washington, and USC, all Pac-10 stalwarts, have remained in and around the top 10 for most of the year despite not matching Cal's tournament performances early in the year.

Nevertheless, the Bears are focusing on their golf and not their ranking.

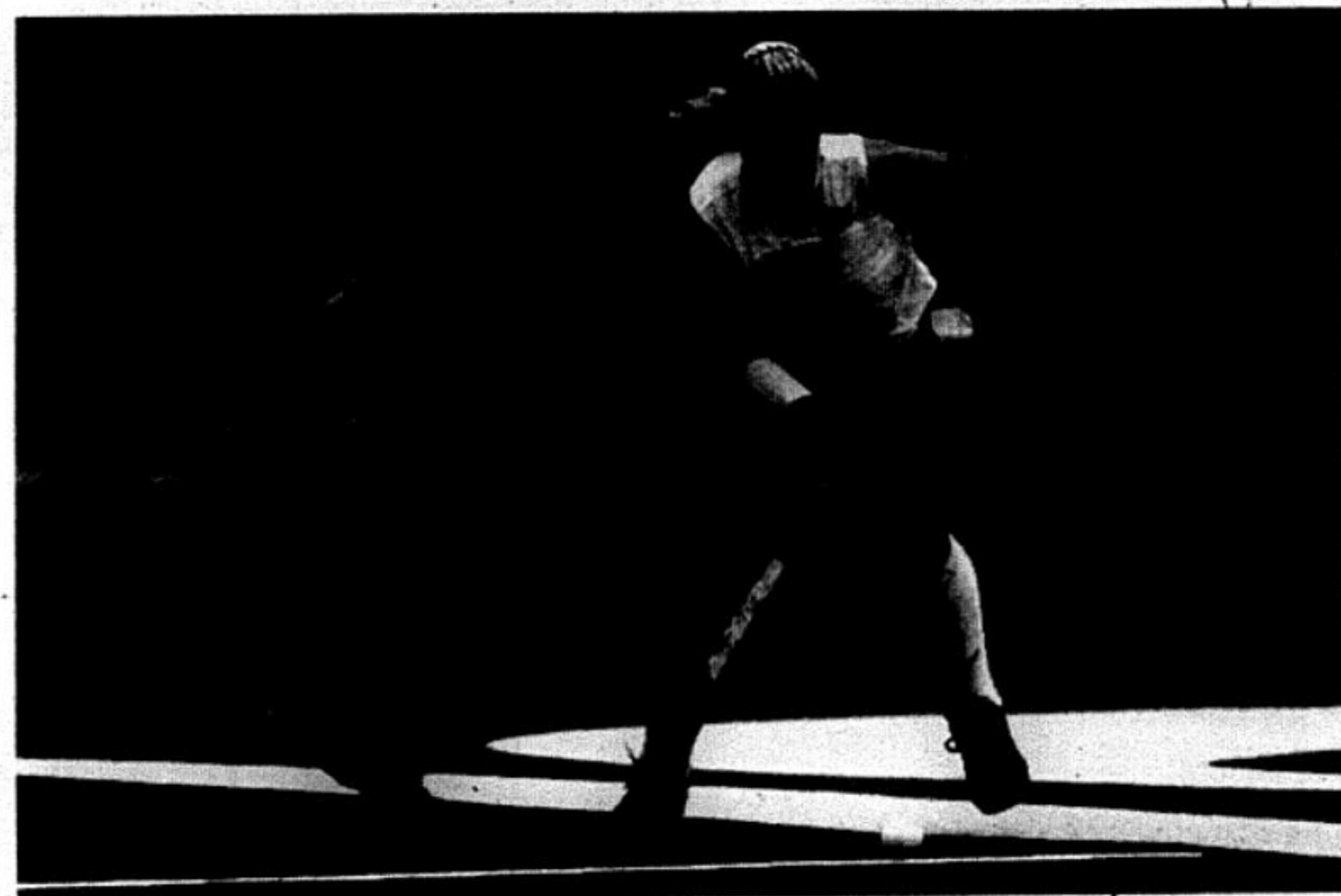
"I'm not really worried about rankings," says McDaniel. "They don't mean much until March."

Laing, who is poised to break her own school stroke average record of 74.5, thinks that setting even higher goals in the spring will elevate Cal to the top of the Pac-10.

"We want to win the Pac-10, or just win every single tournament," says Laing. "We have the potential."

McDaniel is happy to be a part of a program with a budding reputation, not to mention the fact that she has been there from the beginning.

"We keep improving each year," says McDaniel. "That's what's so much fun."



FILE/RAMIN RAHIMIAN

NORA FEDDERSEN fights for the ball in a home victory against St. Louis two weeks ago. The Bears may face St. Louis again in this week's tournament.

NorPac Tournament Begins Tomorrow, Cal Looking to Repeat as Champs

by MATT TOKESHI
CONTRIBUTING WRITER

The Cal field hockey team enters the NorPac Conference tournament opener as the top seed for the fourth consecutive year.

The Bears (11-6, 6-0 NorPac) are also the only team in the eight team tournament that has a winning overall record.

So are they taking tomorrow's 11

a.m. tournament-opening tilt at Stanford's Artificial Turf Field against Appalachian State lightly?

No way, says coach Shellie Onstead.

"I'm not taking them lightly at all," Onstead said of the Mountaineers (5-13, 1-5 4th place in the NorPac East). "The whole race (in the NorPac East)

See FIELD HOCKEY, page 6