

Product Features

BigSky-60D is a double-sided extrusion with a profile width of 60 mm (2.36 in.). Custom-made on the premises, the BigSky-60D extrusion creates four-sided counters, podiums and towers in varied sizes. Over an inch thicker than the BigSky-32D, BigSky-60D is recommended for counters, tables, and large towers. Standard Big Sky Counters and Towers accept four individual custom fabric graphics, excluding top and bottom. An inside corner extrusion can be added to make more complex shapes. You can add-on an acrylic countertop to convert the structure into a podium or counter display. LED lighting options are available to backlight your counter or tower to help your message really stand out.

Specs

Specifications:

- 60 mm (2.36 in) wide aluminum profile
- Multi graphic display
- Accepts 12 mm keder

Functions:

- Podium/counter display
- Backlit
- Towers
- Rooms

Measurements

60D Frame Profile Side:

- 60 mm

Linear Foot Weight:

- 15.1 oz

Maximum Extrusion Length:

- 202 in

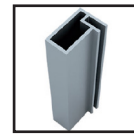
Minimum Extrusion Length:

- 12 in

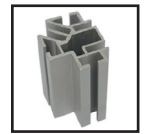
Length For Splits / Cuts In Extrusions:

- 96 in Max

Available Options



Big Sky-CG



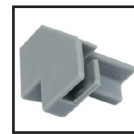
Big Sky-IC



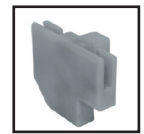
*Resort Light Strip
Qty: (16)



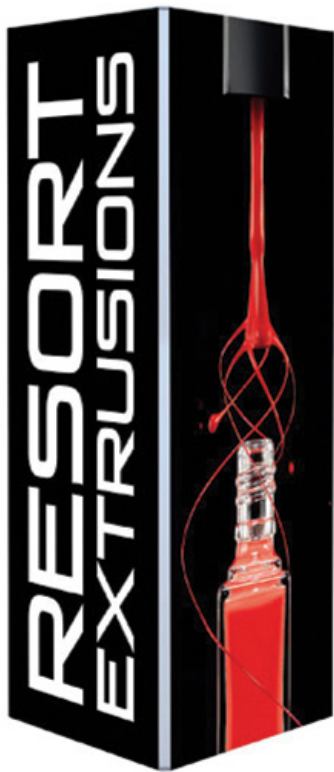
*Ladder Lights



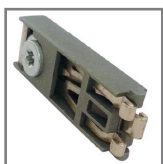
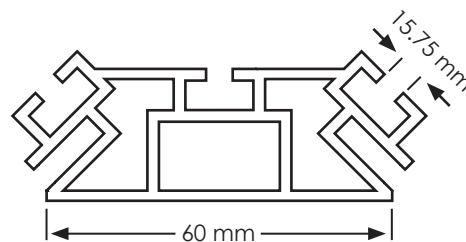
^Caps



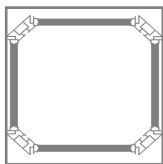
^Caps



Corner Views



Vail Key Lock



Top View