

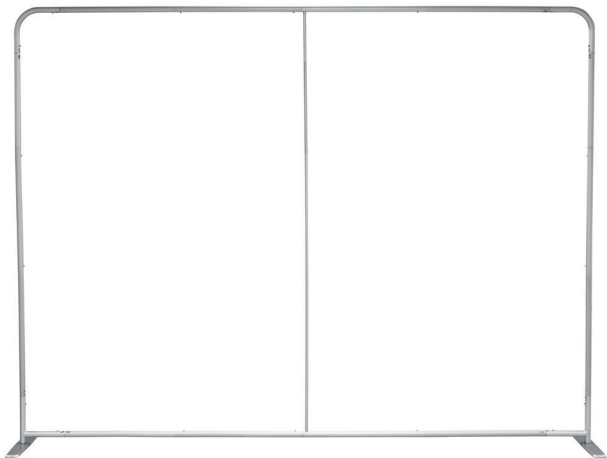
10FT EZ TUBE STRAIGHT 30

EZ TUBE FABRIC DISPLAYS

PRODUCT CODE: EZT1030G1



On frame On graphic



Silver bag



Flat feet (3.125"W x 15.75"L)



Internal bungee cord



LED Light - Silver (Optional)



LED Light - Black (Optional)

PRODUCT DESCRIPTION

With a sleek and thinner diameter, our EZ Tube Straight 30 frames are a great alternative to our premium backwall displays. Quickly assembled in just minutes, slide the tubes together and lock them in place with a push button snap to assemble the frame. Then, simply pull the pillowcase-like graphic over the frame and zip it shut. The bottom zipper — hidden from view, tightens the stretch fabric beautifully displaying your graphic from edge to edge. Disassembled, the lightweight frame and graphic fits inside a beautiful compact silver bag. Like our premium EZ Tube, the Straight 30 is also available in several sizes and shapes. Quantity pricing is available on our website.

DISPLAY DIMENSIONS	116"W x 87"H
--------------------	--------------

GRAPHIC DIMENSIONS	118"W x 89"H
--------------------	--------------

GRAPHIC MATERIAL

Stretch Fabric

GRAPHIC FINISHING

Sewn on the top, left, and right. Zipper on bottom.

DISPLAY CONSTRUCTION

Aluminum frame (30mm tubing)

SHIPPING WEIGHTS & DIMENSIONS

Shipping Weight	18 lbs (frame only)
	23 lbs (frame and graphic)
Shipping Dimensions	13"L x 53"W x 8"H

LARGE QUANTITY FREIGHT

Freight Shipping	24 boxes per 40"L x 48"W x 61"H skid
Freight Weight	467 lbs (frame only)
	587 lbs (frame and graphic)

GRAPHIC TURN AROUND TIME

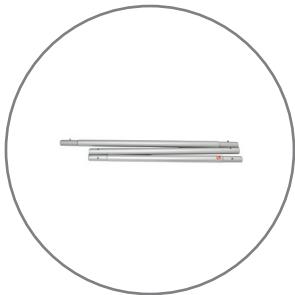
2 business days after proof approval

AVAILABLE ACCESSORIES

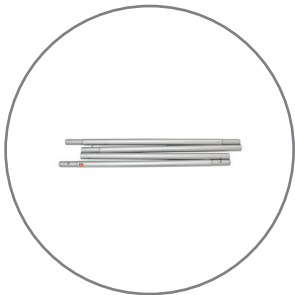
Silver LED Light	Black LED Light
------------------	-----------------

AVAILABILITY	CA and PA
--------------	-----------

PARTS LIST



Qty.2 - Main frame tubing  
3-piece



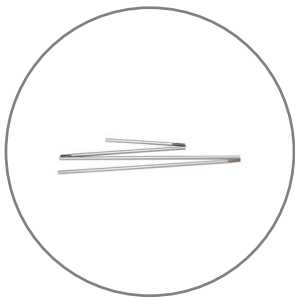
Qty.2 - Main frame tubing  
4-piece



Qty.2 - Top corner arches



Qty.2 - Bottom corner bases



Qty. 1 - Middle support bar



Qty.2 - Base/Foot



Qty. 2 - Bolt

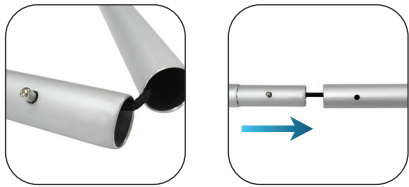


Qty.2 - Washer



SET UP INSTRUCTIONS

A. Horizontal / Vertical frame Tubing



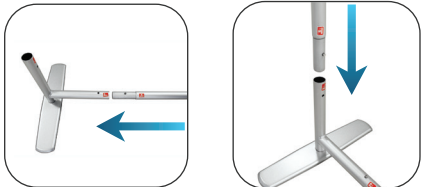
The main frame tubing and support bar are multi-piece units, connected with an internal bungee cord. Connect all of them together using the push caps and lay them to the side.

B. Bottom Corner / Feet

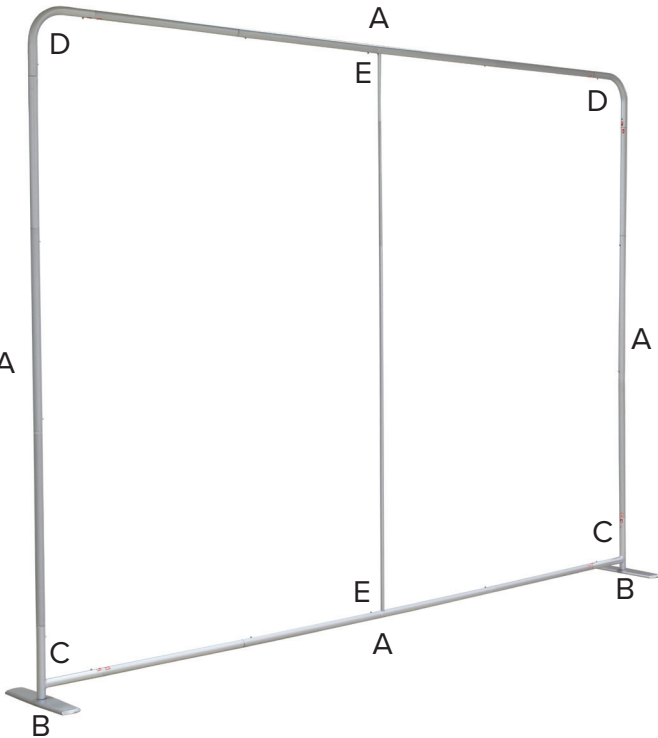


Attach each foot to a bottom corner base using a bolt and washer.

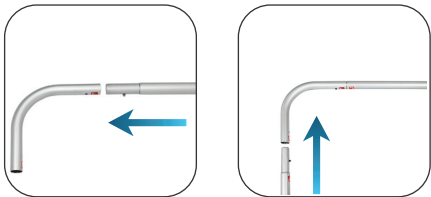
C. Bottom Corner / Horizontal and Vertical Tube



Attach each bottom corner base to each side of a horizontal and vertical frame tube. Each end is conveniently marked with a letter/number decal.

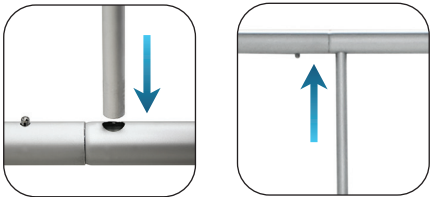


D. Top Arch / Horizontal and Vertical Tube



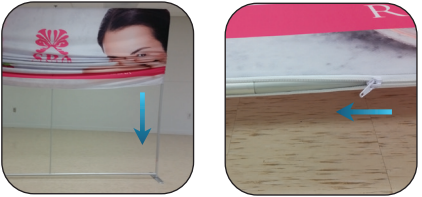
Attach each top corner arch to each side of a horizontal and vertical frame tube. Each end is conveniently marked with a letter/number decal.

E. Middle Support Bar



Complete the structure by sliding in the middle support bar, one end at a time.

F. Install Graphic



Drape the top of the frame, starting with the open end (bottom) of the graphic. Pull the graphic all the way down and zip the bottom shut to maximize tension.