

ROLL UP BANNERS

ONE CHOICE - 33.5 IN. BETTER ROLL UP BANNER STAND

PRODUCT CODE: OC-STPY33.5X80SFLATG



Front View



Angle View

PRODUCT DESCRIPTION

A step up from the Good Roll Up is the Better Roll Up. With a sophisticated base, the Better Roll Up is a stylish choice in portable retractable displays. The custom printed graphic banner attaches to the top of the pole by clamp bar and to the base with adhesive tape.

FEATURES

DISPLAY DIMENSIONS

- 35" W x 80" H x 9 1/2" D

GRAPHIC DIMENSIONS

- 33 1/2" W x 80" H

GRAPHIC MATERIAL

- UV Printed Super Flat Vinyl

GRAPHIC FINISHING

- Cut to size with 5" leader panel bleed

DISPLAY CONSTRUCTION

- Sturdy Aluminum Construction

WEIGHTS & DIMENSIONS (WITH STAND & GRAPHICS)

SHIPPING WEIGHTS

- (Qty 1): 13 lbs
- (Qty 4): 55 lbs
- (Qty 10): 480 lbs

PACKAGE DIMENSIONS

- (Single box): 10" L x 5" W x 37" H
- (Master Boxes): 11.5" L x 21" W x 38" H
- (Freight): 48" L x 40" W x 58" H skid

TURNAROUND TIME

GRAPHIC PACKAGE

- 2 business days after proof approval*

AVAILABILITY

- WEST COAST FULFILLMENT CENTER

*After proof approval, for **up to 20 sets**. Reply with approval via e-mail by 4:00pm PT the day prior to the assigned ship date.



Scan QR Code To View More Resources.

ROLL UP BANNERS

ONE CHOICE - 33.5 IN. BETTER ROLL UP
BANNER STAND

PRODUCT CODE: OC-STPY33.5X80SFLATG



PARTS LIST



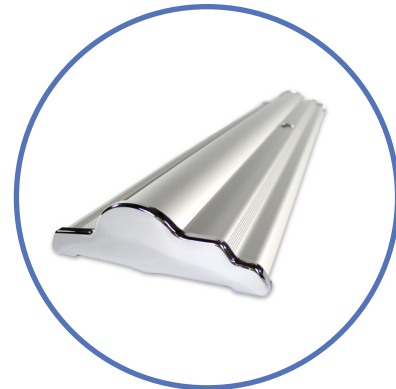
QTY 1:
Travek Bag

Outside Dimensions:

• 36" L x 10" W x 5" H

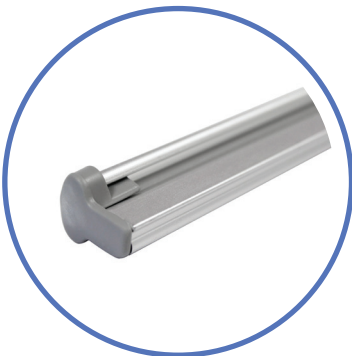
Inside Dimensions:

• 36" L x 9" W x 4 1/2" H



QTY 1:
Best Roll Up Stand

• 35" L x 9 1/2" W x 3" H



QTY 1:
Clamp Bar

• 33 3/4" L x 1 1/2" W x 1" H



QTY 1:
Telescopic Pole

• 70 1/8" H (When assembled)
• 98" H (When Telescopic Pole extends)

