

ROLL UP BANNERS

ONE CHOICE - 36 IN. BEST ROLL UP BANNER STAND

PRODUCT CODE: OC-SS36SLVCB80SFLATG



Front View



Angle View

PRODUCT DESCRIPTION

One Choice 36" Best Roll Up retractable banner stand is reusable, with the durable canvas lead that won't rip on the first change out or thereafter. Moreover, the canvas lead has a hook & loop attachment which enables easy graphic change out. Chrome magnetic end caps make for easy-to-access side panels during graphic installation. The end caps also house the tension pin, plus add a finished, professional appearance to the Best Roll Up base. It's wide aluminum base and adjustable feet provide stability. Inside the adjustable aluminum pole is a bungee cord to help guide pole set up and keep pole parts together so you won't ever lose half of your pole.

FEATURES

DISPLAY DIMENSIONS

- 37 1/2" W x 80" H x 9 1/2" D

GRAPHIC DIMENSIONS

- 36" W x 80" H

GRAPHIC MATERIAL

- UV Printed Super Flat Vinyl

GRAPHIC FINISHING

- Cut to size with 5" leader panel bleed

DISPLAY CONSTRUCTION

- Sturdy Aluminum Construction

WEIGHTS & DIMENSIONS (WITH STAND & GRAPHICS)

SHIPPING WEIGHTS

- (Qty 1): 17 lbs
- (Qty 4): 72 lbs
- (Qty 12): 390 lbs

PACKAGE DIMENSIONS

- (Single Box): 13" L x 5" W x 41" H
- (Master Box): 10" L x 26" W x 42" H
- (Master Box Freight): 48" L x 40" W x 52" H skids

TURNAROUND TIME

GRAPHIC PACKAGE

- 2 business days after proof approval*

AVAILABILITY

- WEST COAST FULFILLMENT CENTER

*After proof approval, for **up to 20 sets**. Reply with approval via e-mail by 4:00pm PT the day prior to the assigned ship date.



Scan QR Code To View More Resources.



ROLL UP BANNERS

ONE CHOICE - 36 IN. BEST ROLL UP
BANNER STAND

PRODUCT CODE: OC-SS36SLVCB80SFLATG

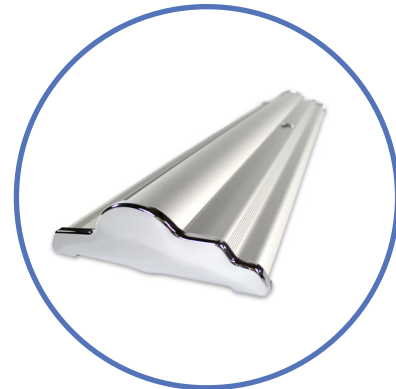


PARTS LIST



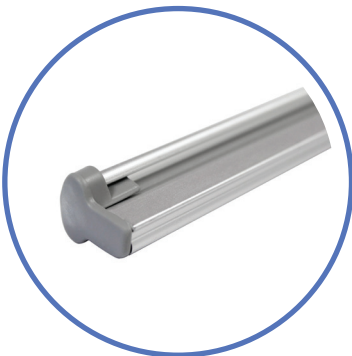
QTY 1:
Silver Bag

- Outside Dimensions:**
- 40 1/4" L x 11 1/2" W x 4" H
- Inside Dimensions:**
- 39" L x 10 1/2" W x 3" H



QTY 1:
Best Roll Up Stand

- 37 1/2" L x 9 1/2" W x 3" H



QTY 1:
Clamp Bar

- 36 1/4" L x 1.5" W x 1" H



QTY 1:
Telescopic Pole

- 70 1/8" H (When assembled)
- 98" H (When Telescopic Pole extends)



QR CODE

Scan QR Code To View More Resources.