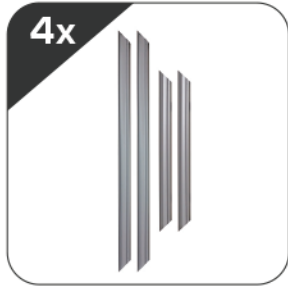


PARTS GUIDE

Please remove all parts from the package and review them.
Contact your service representative if there are any missing parts.



Extrusions

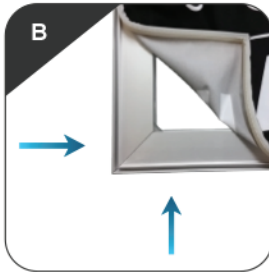
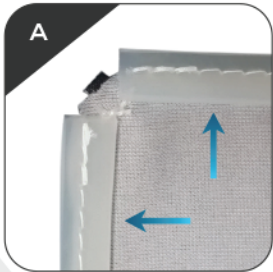


Lock plate

GRAPHIC MOUNTING GUIDE

Step 1

- Locate the silicone edge beading on the back of the graphic, which is sewn to the back perimeter.
- In each corner, insert the silicone edge beading into the groove.



Step 2

- On each side, insert the remainder of the beading.
- The graphic should appear flush and completely tucked into the frame. Repeat the process on the back side if using a 2nd graphic.



ADDITIONAL RESORT EXTRUSION STYLES



ASPEN
T-Leg



ASPEN
Fabric Frame Backwall



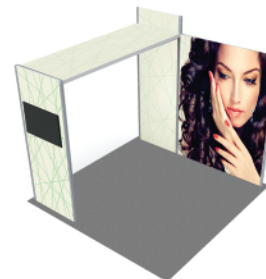
ASPEN
Fabric Frame



ASPEN
Onyx



BIG SKY
Towers & Counters



ALPINE BOOTHS

VAIL

FABRIC FRAME SYSTEMS

SET UP INSTRUCTIONS



INSTALLATION STEPS

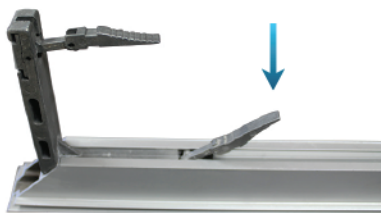
Step 1

Gather all 4 of the extrusions and lay them out on a flat surface. The extrusions will be linked together using the tool free locking mechanisms.



Step 4

Press the lever down completely on the inserted side of the locking mechanism.



Step 7

Make sure the extrusions are flush where the corners meet up.



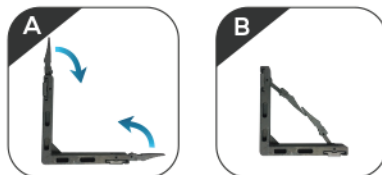
Step 10

The adjacent extrusions should be parallel to each other like the example below.



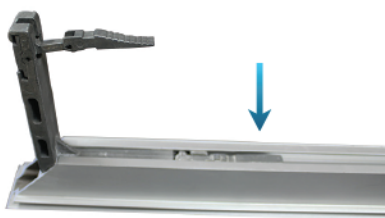
Step 2

Take (1) locking mechanism and (1) extrusion. Make sure the locking mechanism is in the unlocked position with the lever folded in.



Step 5

Fully locked position shown above.



Step 8

Push and lock the 2nd lever on the locking mechanism.



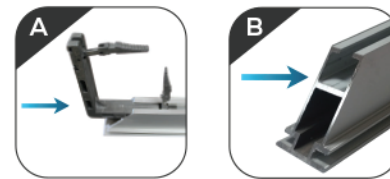
Step 11

Insert the remaining locking mechanisms into the last extrusion. Slide the last extrusion in, then push the remaining levers to lock and complete the frame.



Step 3

Insert the locking mechanism into the slot of the extrusion piece completely, as shown above. Insertion begins at either end of the of the extrusion.



Step 6

Slide on an extrusion to the adjacent corner.



Step 9

One corner is now complete. Repeat the same process for the opposite corner.



Step 12

The frame is now ready to be fitted with the graphic.

