

**www.knittitude.com**

Cream-Colored Cardigan  
Standard Knitting Machine Pattern – Tuck  
S, M, L, XL Sizes



**www.knittitude.com**

Cream-Colored Cardigan  
Standard Knitting Machine Pattern – Tuck  
S, M, L, XL Sizes





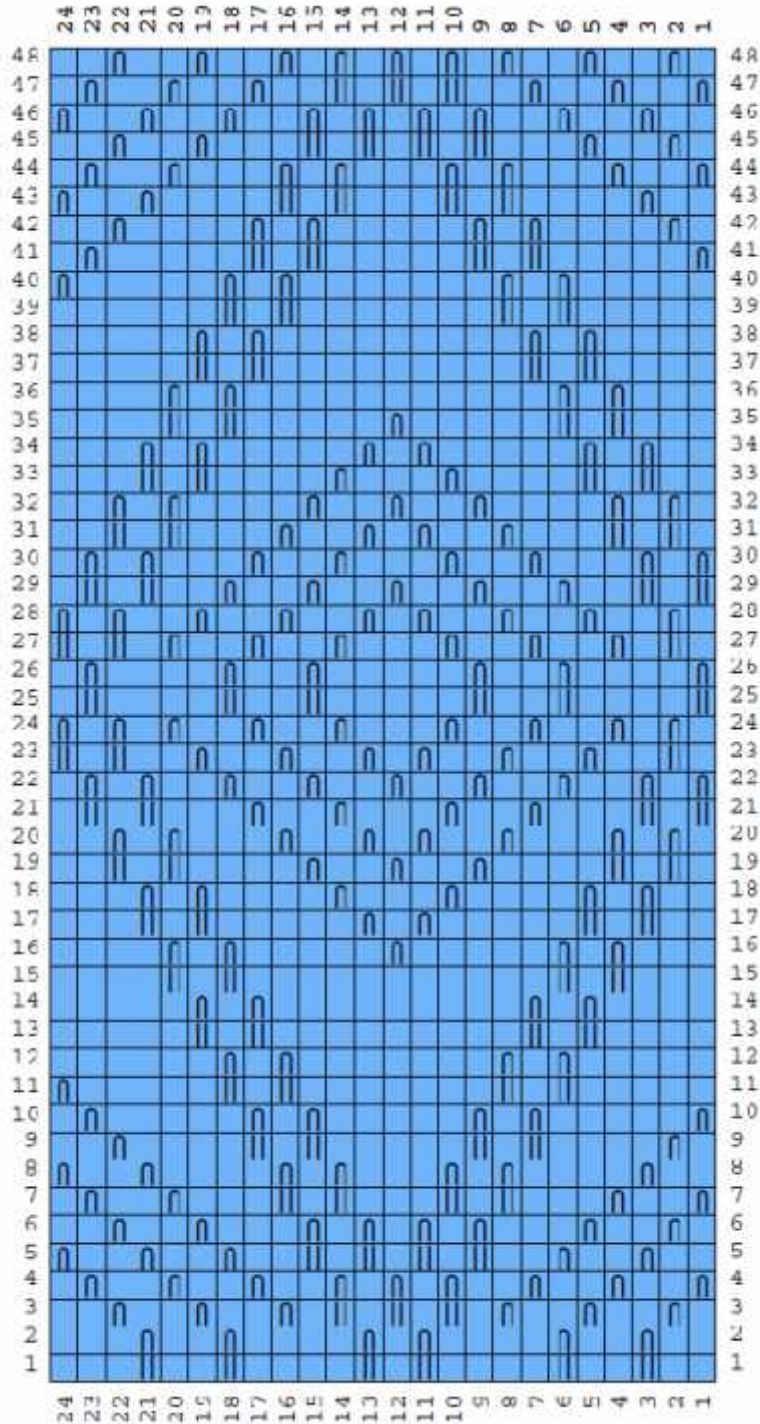
www.knittitude.com

Cream-Colored Cardigan

Standard Knitting Machine Pattern – Tuck

S, M, L, XL Sizes

The Stitch Pattern Symbols



Symbol

Abbreviation

(blank)

Knit

||

Tuck

∩

Tuck



**www.knittitude.com**  
**Cream-Colored Cardigan**  
**Standard Knitting Machine Pattern – Tuck**  
**S, M, L, XL Sizes**

**Stitch Pattern Text**

Abbreviation	Knitting instruction
K	Knit.
T	Tuck.
WS	Wrong Side.

R1: (WS) K2, T1, K2, (T1, K4, T1, K1) twice; K1, T1, K3.  
R2: As row 1.  
R3: (K1, T1, K1) three times; (T1, K1) twice; T1, (K1, T1, K1) three times; K1.  
R4: (T1, K2) three times; T1, K1, T1, (K1, T1, K1) four times.  
R5: (K2, T1) twice; K1, (K1, T1) four times; (K2, T1) three times.  
R6: K1, T1, (K2, T1, K1) twice; T1, K1, T1, (K1, T1, K2) twice; T1, K2.  
R7: (T1, K2) twice; [(K1, T1) twice; K2] twice; (K1, T1, K1) twice.  
R8: K2, T1, K3, [(K1, T1) twice; K2] twice; (K2, T1) twice.  
R9: K1, T1, K2, [K1, (K1, T1) twice; K3] twice; K1, T1, K2.  
R10: (T1, K5, T1, K1) three times.  
R11: K2, [K2, (K1, T1) twice; K4] twice; K1, T1.  
R12: K2, [K2, (K1, T1) twice; K4] twice; K2.  
R13: [K3, (K1, T1) twice; K5] twice.  
R14: As row 13.  
R15: K2, (K1, T1) twice; K10, (K1, T1) twice; K4.  
R16: K2, (K1, T1) twice; (K5, T1) twice; K1, T1, K4.  
R17: K1, (K1, T1) twice; K5, (T1, K1) twice; K3, (K1, T1) twice; K3.  
R18: K1, (K1, T1) twice; K4, T1, (K3, T1, K1) twice; T1, K3.  
R19: (K1, T1) twice; K3, (K1, T1, K1) three times; K2, (K1, T1) twice; K2.  
R20: (K1, T1) twice; K3, (T1, K2, T1, K1) twice; K1, (K1, T1) twice; K2.  
R21: (T1, K1) twice; K1, [(K1, T1, K1) twice; K1] twice; (K1, T1) twice; K1.  
R22: T1, (K1, T1, K1) seven times; T1, K1.  
R23: K1, T1, K2, [(T1, K2) twice; T1, K1] twice; (K1, T1) twice.  
R24: (K1, T1) twice; K1, [(K1, T1, K1) twice; K1] twice; (T1, K1) twice; T1.  
R25: T1, K2, [(K2, T1) twice; K3] twice; K1, T1, K1.  
R26: As row 25.  
R27: K1, T1, K1, T1, K1, [(K1, T1, K1) twice; K1] twice; T1, (K1, T1) twice.  
R28: K1, [(T1, K2) three times; T1, K1] twice; T1.  
R29: (T1, K1) twice; (K1, T1, K1) five times; (K1, T1) twice; K1.  
R30: (T1, K1) twice; K1, [(K1, T1, K1) twice; K1] twice; (K1, T1) twice; K1.  
R31: (K1, T1) twice; K3, (T1, K2, T1, K1) twice; K1, (K1, T1) twice; K2.  
R32: (K1, T1) twice; K3, (K1, T1, K1) three times; K2, (K1, T1) twice; K2.  
R33: K1, (K1, T1) twice; K3, (K1, T1, K2) twice; K1, (K1, T1) twice; K3.  
R34: [K1, (K1, T1) twice; K3] three times.  
R35: K2, (K1, T1) twice; K5, T1, K4, (K1, T1) twice; K4.  
R36: K2, (K1, T1) twice; K10, (K1, T1) twice; K4.  
R37: [K3, (K1, T1) twice; K5] twice.  
R38: As row 37.  
R39: K2, [K2, (K1, T1) twice; K4] twice; K2.  
R40: K2, [K2, (K1, T1) twice; K4] twice; K1, T1.  
R41: T1, K3, [K1, (K1, T1) twice; K3] twice; K2, T1, K1.  
R42: K1, T1, K2, [K1, (K1, T1) twice; K3] twice; K1, T1, K2.  
R43: K2, T1, K3, [(K1, T1) twice; K2] twice; (K2, T1) twice.

**www.knittitude.com**  
**Cream-Colored Cardigan**  
**Standard Knitting Machine Pattern – Tuck**  
**S, M, L, XL Sizes**

R44: T1, K2, (T1, K3, T1, K1) three times; K1, T1, K1.  
R45: (K1, T1, K1) twice; K1, (K1, T1) four times; K1, (K2, T1) twice; K2.  
R46: (K2, T1) three times; (K1, T1) twice; (K1, T1, K1) three times; K1, T1.  
R47: (T1, K2) three times; (T1, K1) twice; T1, (K2, T1) three times; K1.  
R48: (K1, T1, K1) three times; (T1, K1) twice; T1, (K1, T1, K1) three times; K1.

.....

I used 1 strand of cream-colored mercerized cotton yarn Nm 2/10. The finished cardigan size S (in the picture) weights 510 gr (18 oz).

Gauge Swatch with **Tension 6, Stitch Dial 6:**

- 25.32 Stitches & 63.16 Rows per 10 cm (4 in).
- Or
- Width of 40 stitches - 15.8 cm (6.2 in);
- Height of 60 rows - 9.5 cm (3.7 in).

The cardigan was knitted on my [Silver Reed SK 840](#) , standard electronic knitting machine, using main bed and [ribber SRP 60N](#) (for the welt).

To be able to knit this pattern you need a standard (4.5mm) knitting machine and ribber. You need to know how to knit K2 P2 Rib using the Broken Toe Cast-On method and how to transfer the stitches from the ribber on the main bed (you find them in the knitting machine manual).

Here is a video tutorial for the Broken Toe Cast on:

<http://www.youtube.com/watch?v=zSzparWeh8M>

Here is a video tutorial for K2 P2 Rib springy version and transfer stitches to the main bed:

[http://www.youtube.com/watch?v=u90\\_iobGu-0](http://www.youtube.com/watch?v=u90_iobGu-0)

**Legend:**

R - row

K - knit (ex: K50 - knit 50 stitches)

Sts - stitches

Dec - decrease

Inc - inscrease

**www.knittitude.com**  
Cream-Colored Cardigan  
Standard Knitting Machine Pattern – Tuck  
S, M, L, XL Sizes

**Size S**

**Front Left:**

Cast on 51 sts (LN25..RN26) for K2 P2 Rib and Broken Toe Cast-on method.  
Knit 21 rows of K2 P2 Rib.  
Finish with the carriage at right.  
Transfer all the stitches to the main bed.  
Set RC to 0.  
Set carriage for Tuck.

Rows 1-284: K51.  
R285: Dec 1 sts at right. K50.  
Rows 286-298: K50.  
R299: Dec 1 sts at right. K49.  
Rows 300-312: K49.  
R313: Dec 1 sts at right. K48.  
Rows 314-326: K48.  
R327: Dec 1 sts at right. K47.  
Rows 328-340: K47.  
R341: Dec 1 sts at right. K46.  
Rows 342-354: K46.  
R355: Dec 1 sts at right. K45.  
Rows 356-368: K45.  
R369: Dec 1 sts at right. K44.  
Rows 370-382: K44.  
R383: Dec 1 sts at right. K43.  
Rows 384-396: K43.  
R397: Dec 1 sts at right. K42.  
Rows 398-411: K42.  
Cast off remainder. End of piece.

**Front Right:**

Cast on 51 sts (LN25..RN26) for K2 P2 Rib and Broken Toe Cast-on method.  
Knit 21 rows of K2 P2 Rib.  
Finish with the carriage at right.  
Transfer all the stitches to the main bed.  
Set RC to 0.  
Set carriage for Tuck.

Rows 1-284: K51.  
R285: Dec 1 sts at left. K50.  
Rows 286-298: K50.  
R299: Dec 1 sts at left. K49.  
Rows 300-312: K49.  
R313: Dec 1 sts at left. K48.  
Rows 314-326: K48.  
R327: Dec 1 sts at left. K47.  
Rows 328-340: K47.  
R341: Dec 1 sts at left. K46.  
Rows 342-354: K46.  
R355: Dec 1 sts at left. K45.  
Rows 356-368: K45.  
R369: Dec 1 sts at left. K44.  
Rows 370-382: K44.  
R383: Dec 1 sts at left. K43.

**www.knittitude.com**  
Cream-Colored Cardigan  
Standard Knitting Machine Pattern – Tuck  
S, M, L, XL Sizes

Rows 384-396: K43.  
R397: Dec 1 sts at left. K42.  
Rows 398-411: K42.  
Cast off remainder. End of piece.

**Back:**

Cast on 128 sts (LN64..RN64) for K2 P2 Rib and Broken Toe Cast-on method.  
Knit 21 rows of K2 P2 Rib.  
Finish with the carriage at right.  
Transfer all the stitches to the main bed.  
Set RC to 0.  
Set carriage for Tuck.

Rows 1-411: K128.  
Cast off remainder. End of piece.

**Sleeve:**

Cast on 60 sts (LN30..RN30) for K2 P2 Rib and Broken Toe Cast-on method.  
Knit 21 rows of K2 P2 Rib.  
Finish with the carriage at right.  
Transfer all the stitches to the main bed.  
Set RC to 0.  
Set carriage for Tuck.

Rows 1-8: K60.  
R9: Inc 1 sts at left, Inc 1 sts at right. K62.  
Rows 10-16: K62.  
R17: Inc 1 sts at left, Inc 1 sts at right. K64.  
Rows 18-24: K64.  
R25: Inc 1 sts at left, Inc 1 sts at right. K66.  
Rows 26-32: K66.  
R33: Inc 1 sts at left, Inc 1 sts at right. K68.  
Rows 34-40: K68.  
R41: Inc 1 sts at left, Inc 1 sts at right. K70.  
Rows 42-48: K70.  
R49: Inc 1 sts at left, Inc 1 sts at right. K72.  
Rows 50-56: K72.  
R57: Inc 1 sts at left, Inc 1 sts at right. K74.  
Rows 58-64: K74.  
R65: Inc 1 sts at left, Inc 1 sts at right. K76.  
Rows 66-72: K76.  
R73: Inc 1 sts at left, Inc 1 sts at right. K78.  
Rows 74-80: K78.  
R81: Inc 1 sts at left, Inc 1 sts at right. K80.  
Rows 82-88: K80.  
R89: Inc 1 sts at left, Inc 1 sts at right. K82.  
Rows 90-96: K82.  
R97: Inc 1 sts at left, Inc 1 sts at right. K84.  
Rows 98-104: K84.  
R105: Inc 1 sts at left, Inc 1 sts at right. K86.  
Rows 106-112: K86.  
R113: Inc 1 sts at left, Inc 1 sts at right. K88.  
Rows 114-120: K88.  
R121: Inc 1 sts at left, Inc 1 sts at right. K90.  
Rows 122-128: K90.



**www.knittitude.com**  
**Cream-Colored Cardigan**  
**Standard Knitting Machine Pattern – Tuck**  
**S, M, L, XL Sizes**

R129: Inc 1 sts at left, Inc 1 sts at right. K92.  
Rows 130-136: K92.  
R137: Inc 1 sts at left, Inc 1 sts at right. K94.  
Rows 138-144: K94.  
R145: Inc 1 sts at left, Inc 1 sts at right. K96.  
Rows 146-152: K96.  
R153: Inc 1 sts at left, Inc 1 sts at right. K98.  
Rows 154-160: K98.  
R161: Inc 1 sts at left, Inc 1 sts at right. K100.  
Rows 162-168: K100.  
R169: Inc 1 sts at left, Inc 1 sts at right. K102.  
Rows 170-176: K102.  
R177: Inc 1 sts at left, Inc 1 sts at right. K104.  
Rows 178-184: K104.  
R185: Inc 1 sts at left, Inc 1 sts at right. K106.  
Rows 186-192: K106.  
R193: Inc 1 sts at left, Inc 1 sts at right. K108.  
Rows 194-200: K108.  
R201: Inc 1 sts at left, Inc 1 sts at right. K110.  
Rows 202-208: K110.  
R209: Inc 1 sts at left, Inc 1 sts at right. K112.  
Rows 210-217: K112.  
R218: Inc 1 sts at left, Inc 1 sts at right. K114.  
Rows 219-226: K114.  
R227: Inc 1 sts at left, Inc 1 sts at right. K116.  
Rows 228-235: K116.  
R236: Inc 1 sts at left, Inc 1 sts at right. K118.  
Rows 237-244: K118.  
R245: Inc 1 sts at left, Inc 1 sts at right. K120.  
Rows 246-253: K120.  
R254: Inc 1 sts at left, Inc 1 sts at right. K122.  
Rows 255-262: K122.  
R263: Inc 1 sts at left, Inc 1 sts at right. K124.  
Rows 264-271: K124.  
R272: Inc 1 sts at left, Inc 1 sts at right. K126.  
Rows 273-286: K126.  
Cast off remainder. End of piece.

**Side welt:**

Set RC to 0.  
Cast on 24 sts (LN12..RN12) for K2 P2 Rib and Broken Toe Cast-on method.  
Rows 1-87: K24.  
At R88 you start the first buttonhole (see the **Buttonhole** instructions at the end, after size XL instructions).  
At R126 you start the second buttonhole.  
Knit the rest of the rows till R332 as row 1.  
Cast off remainder. End of piece.

**Size M**

**Front Left:**

Cast on 62 sts (LN31..RN31) for K2 P2 Rib and Broken Toe Cast-on method.  
Knit 21 rows of K2 P2 Rib.

**www.knittitude.com**  
Cream-Colored Cardigan  
Standard Knitting Machine Pattern – Tuck  
S, M, L, XL Sizes

Finish with the carriage at right.  
Transfer all the stitches to the main bed.  
Set RC to 0.  
Set carriage for Tuck.

Rows 1-289: K62.  
R290: Dec 1 sts at right. K61.  
Rows 291-298: K61.  
R299: Dec 1 sts at right. K60.  
Rows 300-307: K60.  
R308: Dec 1 sts at right. K59.  
Rows 309-316: K59.  
R317: Dec 1 sts at right. K58.  
Rows 318-325: K58.  
R326: Dec 1 sts at right. K57.  
Rows 327-334: K57.  
R335: Dec 1 sts at right. K56.  
Rows 336-343: K56.  
R344: Dec 1 sts at right. K55.  
Rows 345-352: K55.  
R353: Dec 1 sts at right. K54.  
Rows 354-361: K54.  
R362: Dec 1 sts at right. K53.  
Rows 363-371: K53.  
R372: Dec 1 sts at right. K52.  
Rows 373-381: K52.  
R382: Dec 1 sts at right. K51.  
Rows 383-391: K51.  
R392: Dec 1 sts at right. K50.  
Rows 393-401: K50.  
R402: Dec 1 sts at right. K49.  
Rows 403-411: K49.  
R412: Dec 1 sts at right. K48.  
Rows 413-421: K48.  
R422: Dec 1 sts at right. K47.  
Rows 423-431: K47.  
Cast off remainder. End of piece.

**Front Right:**

Cast on 62 sts (LN31..RN31) for K2 P2 Rib and Broken Toe Cast-on method.  
Knit 21 rows of K2 P2 Rib.  
Finish with the carriage at right.  
Transfer all the stitches to the main bed.  
Set RC to 0.  
Set carriage for Tuck.

Rows 1-289: K62.  
R290: Dec 1 sts at right. K61.  
Rows 291-298: K61.  
R299: Dec 1 sts at right. K60.  
Rows 300-307: K60.  
R308: Dec 1 sts at right. K59.  
Rows 309-316: K59.  
R317: Dec 1 sts at right. K58.  
Rows 318-325: K58.  
R326: Dec 1 sts at right. K57.  
Rows 327-334: K57.

**www.knittitude.com**  
Cream-Colored Cardigan  
Standard Knitting Machine Pattern – Tuck  
S, M, L, XL Sizes

R335: Dec 1 sts at right. K56.  
Rows 336-343: K56.  
R344: Dec 1 sts at right. K55.  
Rows 345-352: K55.  
R353: Dec 1 sts at right. K54.  
Rows 354-361: K54.  
R362: Dec 1 sts at right. K53.  
Rows 363-371: K53.  
R372: Dec 1 sts at right. K52.  
Rows 373-381: K52.  
R382: Dec 1 sts at right. K51.  
Rows 383-391: K51.  
R392: Dec 1 sts at right. K50.  
Rows 393-401: K50.  
R402: Dec 1 sts at right. K49.  
Rows 403-411: K49.  
R412: Dec 1 sts at right. K48.  
Rows 413-421: K48.  
R422: Dec 1 sts at right. K47.  
Rows 423-431: K47.  
Cast off remainder. End of piece.

**Back:**

Cast on 140 sts (LN70..RN70) for K2 P2 Rib and Broken Toe Cast-on method.  
Knit 21 rows of K2 P2 Rib.  
Finish with the carriage at right.  
Transfer all the stitches to the main bed.  
Set RC to 0.  
Set carriage for Tuck.

Rows 1-432: K140.  
Cast off remainder. End of piece.

**Sleeve:**

Cast on 64 sts (LN32..RN32) for K2 P2 Rib and Broken Toe Cast-on method.  
Knit 21 rows of K2 P2 Rib.  
Finish with the carriage at right.  
Transfer all the stitches to the main bed.  
Set RC to 0.  
Set carriage for Tuck.

Rows 1-8: K64.  
R9: Inc 1 sts at left, Inc 1 sts at right. K66.  
Rows 10-16: K66.  
R17: Inc 1 sts at left, Inc 1 sts at right. K68.  
Rows 18-24: K68.  
R25: Inc 1 sts at left, Inc 1 sts at right. K70.  
Rows 26-32: K70.  
R33: Inc 1 sts at left, Inc 1 sts at right. K72.  
Rows 34-40: K72.  
R41: Inc 1 sts at left, Inc 1 sts at right. K74.  
Rows 42-48: K74.  
R49: Inc 1 sts at left, Inc 1 sts at right. K76.  
Rows 50-56: K76.  
R57: Inc 1 sts at left, Inc 1 sts at right. K78.

**www.knittitude.com**  
Cream-Colored Cardigan  
Standard Knitting Machine Pattern – Tuck  
S, M, L, XL Sizes

Rows 58-64: K78.  
R65: Inc 1 sts at left, Inc 1 sts at right. K80.  
Rows 66-72: K80.  
R73: Inc 1 sts at left, Inc 1 sts at right. K82.  
Rows 74-80: K82.  
R81: Inc 1 sts at left, Inc 1 sts at right. K84.  
Rows 82-88: K84.  
R89: Inc 1 sts at left, Inc 1 sts at right. K86.  
Rows 90-96: K86.  
R97: Inc 1 sts at left, Inc 1 sts at right. K88.  
Rows 98-104: K88.  
R105: Inc 1 sts at left, Inc 1 sts at right. K90.  
Rows 106-112: K90.  
R113: Inc 1 sts at left, Inc 1 sts at right. K92.  
Rows 114-120: K92.  
R121: Inc 1 sts at left, Inc 1 sts at right. K94.  
Rows 122-128: K94.  
R129: Inc 1 sts at left, Inc 1 sts at right. K96.  
Rows 130-136: K96.  
R137: Inc 1 sts at left, Inc 1 sts at right. K98.  
Rows 138-144: K98.  
R145: Inc 1 sts at left, Inc 1 sts at right. K100.  
Rows 146-152: K100.  
R153: Inc 1 sts at left, Inc 1 sts at right. K102.  
Rows 154-160: K102.  
R161: Inc 1 sts at left, Inc 1 sts at right. K104.  
Rows 162-168: K104.  
R169: Inc 1 sts at left, Inc 1 sts at right. K106.  
Rows 170-176: K106.  
R177: Inc 1 sts at left, Inc 1 sts at right. K108.  
Rows 178-184: K108.  
R185: Inc 1 sts at left, Inc 1 sts at right. K110.  
Rows 186-192: K110.  
R193: Inc 1 sts at left, Inc 1 sts at right. K112.  
Rows 194-200: K112.  
R201: Inc 1 sts at left, Inc 1 sts at right. K114.  
Rows 202-208: K114.  
R209: Inc 1 sts at left, Inc 1 sts at right. K116.  
Rows 210-216: K116.  
R217: Inc 1 sts at left, Inc 1 sts at right. K118.  
Rows 218-224: K118.  
R225: Inc 1 sts at left, Inc 1 sts at right. K120.  
Rows 226-232: K120.  
R233: Inc 1 sts at left, Inc 1 sts at right. K122.  
Rows 234-240: K122.  
R241: Inc 1 sts at left, Inc 1 sts at right. K124.  
Rows 242-248: K124.  
R249: Inc 1 sts at left, Inc 1 sts at right. K126.  
Rows 250-256: K126.  
R257: Inc 1 sts at left, Inc 1 sts at right. K128.  
Rows 258-264: K128.  
R265: Inc 1 sts at left, Inc 1 sts at right. K130.  
Rows 266-272: K130.  
R273: Inc 1 sts at left, Inc 1 sts at right. K132.  
Rows 274-280: K132.  
R281: Inc 1 sts at left, Inc 1 sts at right. K134.  
Rows 282-295: K134.  
Cast off remainder. End of piece.

**www.knittitude.com**  
Cream-Colored Cardigan  
Standard Knitting Machine Pattern – Tuck  
S, M, L, XL Sizes

**Side welt:**

Set RC to 0.  
Cast on 24 sts (LN12..RN12) for K2 P2 Rib and Broken Toe Cast-on method.  
Rows 1-92: K24.  
At R93 start the first buttonhole (see the **Buttonhole** instructions at the end, after size XL instructions).  
At R133 start the second buttonhole.  
K24 for the rest of the rows until R350.  
Cast off remainder. End of piece.

**Size L**

**Front Left:**

Cast on 72 sts (LN36..RN36) for K2 P2 Rib and Broken Toe Cast-on method.  
Knit 21 rows of K2 P2 Rib.  
Finish with the carriage at right.  
Transfer all the stitches to the main bed.  
Set RC to 0.  
Set carriage for Tuck.

Rows 1-295: K72.  
R296: Dec 1 sts at right. K71.  
Rows 297-302: K71.  
R303: Dec 1 sts at right. K70.  
Rows 304-309: K70.  
R310: Dec 1 sts at right. K69.  
Rows 311-316: K69.  
R317: Dec 1 sts at right. K68.  
Rows 318-324: K68.  
R325: Dec 1 sts at right. K67.  
Rows 326-332: K67.  
R333: Dec 1 sts at right. K66.  
Rows 334-340: K66.  
R341: Dec 1 sts at right. K65.  
Rows 342-348: K65.  
R349: Dec 1 sts at right. K64.  
Rows 350-356: K64.  
R357: Dec 1 sts at right. K63.  
Rows 358-364: K63.  
R365: Dec 1 sts at right. K62.  
Rows 366-372: K62.  
R373: Dec 1 sts at right. K61.  
Rows 374-380: K61.  
R381: Dec 1 sts at right. K60.  
Rows 382-388: K60.  
R389: Dec 1 sts at right. K59.  
Rows 390-396: K59.  
R397: Dec 1 sts at right. K58.  
Rows 398-404: K58.  
R405: Dec 1 sts at right. K57.  
Rows 406-412: K57.  
R413: Dec 1 sts at right. K56.

**www.knittitude.com**  
Cream-Colored Cardigan  
Standard Knitting Machine Pattern – Tuck  
S, M, L, XL Sizes

Rows 414-420: K56.  
R421: Dec 1 sts at right. K55.  
Rows 422-428: K55.  
R429: Dec 1 sts at right. K54.  
Rows 430-436: K54.  
R437: Dec 1 sts at right. K53.  
Rows 438-444: K53.  
R445: Dec 1 sts at right. K52.  
Rows 446-452: K52.  
Cast off remainder. End of piece.

**Front Right:**

Cast on 72 sts (LN36..RN36) for K2 P2 Rib and Broken Toe Cast-on method.  
Knit 21 rows of K2 P2 Rib.  
Finish with the carriage at right.  
Transfer all the stitches to the main bed.  
Set RC to 0.  
Set carriage for Tuck.

Rows 1-295: K72.  
R296: Dec 1 sts at left. K71.  
Rows 297-302: K71.  
R303: Dec 1 sts at left. K70.  
Rows 304-309: K70.  
R310: Dec 1 sts at left. K69.  
Rows 311-316: K69.  
R317: Dec 1 sts at left. K68.  
Rows 318-324: K68.  
R325: Dec 1 sts at left. K67.  
Rows 326-332: K67.  
R333: Dec 1 sts at left. K66.  
Rows 334-340: K66.  
R341: Dec 1 sts at left. K65.  
Rows 342-348: K65.  
R349: Dec 1 sts at left. K64.  
Rows 350-356: K64.  
R357: Dec 1 sts at left. K63.  
Rows 358-364: K63.  
R365: Dec 1 sts at left. K62.  
Rows 366-372: K62.  
R373: Dec 1 sts at left. K61.  
Rows 374-380: K61.  
R381: Dec 1 sts at left. K60.  
Rows 382-388: K60.  
R389: Dec 1 sts at left. K59.  
Rows 390-396: K59.  
R397: Dec 1 sts at left. K58.  
Rows 398-404: K58.  
R405: Dec 1 sts at left. K57.  
Rows 406-412: K57.  
R413: Dec 1 sts at left. K56.  
Rows 414-420: K56.  
R421: Dec 1 sts at left. K55.  
Rows 422-428: K55.  
R429: Dec 1 sts at left. K54.  
Rows 430-436: K54.  
R437: Dec 1 sts at left. K53.

**www.knittitude.com**  
Cream-Colored Cardigan  
Standard Knitting Machine Pattern – Tuck  
S, M, L, XL Sizes

Rows 438-444: K53.  
R445: Dec 1 sts at left. K52.  
Rows 446-452: K52.  
Cast off remainder. End of piece.

**Back:**

Cast on 154 sts (LN77..RN77) for K2 P2 Rib and Broken Toe Cast-on method.  
Knit 21 rows of K2 P2 Rib.  
Finish with the carriage at right.  
Transfer all the stitches to the main bed.  
Set RC to 0.  
Set carriage for Tuck.

Rows 1-453: K154.  
Cast off remainder. End of piece.

**Sleeve:**

Cast on 68 sts (LN34..RN34) for K2 P2 Rib and Broken Toe Cast-on method.  
Knit 21 rows of K2 P2 Rib.  
Finish with the carriage at right.  
Transfer all the stitches to the main bed.  
Set RC to 0.  
Set carriage for Tuck.

Rows 1-7: K68.  
R8: Inc 1 sts at left, Inc 1 sts at right. K70.  
Rows 9-14: K70.  
R15: Inc 1 sts at left, Inc 1 sts at right. K72.  
Rows 16-21: K72.  
R22: Inc 1 sts at left, Inc 1 sts at right. K74.  
Rows 23-28: K74.  
R29: Inc 1 sts at left, Inc 1 sts at right. K76.  
Rows 30-35: K76.  
R36: Inc 1 sts at left, Inc 1 sts at right. K78.  
Rows 37-42: K78.  
R43: Inc 1 sts at left, Inc 1 sts at right. K80.  
Rows 44-49: K80.  
R50: Inc 1 sts at left, Inc 1 sts at right. K82.  
Rows 51-57: K82.  
R58: Inc 1 sts at left, Inc 1 sts at right. K84.  
Rows 59-65: K84.  
R66: Inc 1 sts at left, Inc 1 sts at right. K86.  
Rows 67-73: K86.  
R74: Inc 1 sts at left, Inc 1 sts at right. K88.  
Rows 75-81: K88.  
R82: Inc 1 sts at left, Inc 1 sts at right. K90.  
Rows 83-89: K90.  
R90: Inc 1 sts at left, Inc 1 sts at right. K92.  
Rows 91-97: K92.  
R98: Inc 1 sts at left, Inc 1 sts at right. K94.  
Rows 99-105: K94.  
R106: Inc 1 sts at left, Inc 1 sts at right. K96.  
Rows 107-113: K96.  
R114: Inc 1 sts at left, Inc 1 sts at right. K98.  
Rows 115-121: K98.

**www.knittitude.com**  
Cream-Colored Cardigan  
Standard Knitting Machine Pattern – Tuck  
S, M, L, XL Sizes

R122: Inc 1 sts at left, Inc 1 sts at right. K100.  
Rows 123-129: K100.  
R130: Inc 1 sts at left, Inc 1 sts at right. K102.  
Rows 131-137: K102.  
R138: Inc 1 sts at left, Inc 1 sts at right. K104.  
Rows 139-145: K104.  
R146: Inc 1 sts at left, Inc 1 sts at right. K106.  
Rows 147-153: K106.  
R154: Inc 1 sts at left, Inc 1 sts at right. K108.  
Rows 155-161: K108.  
R162: Inc 1 sts at left, Inc 1 sts at right. K110.  
Rows 163-169: K110.  
R170: Inc 1 sts at left, Inc 1 sts at right. K112.  
Rows 171-177: K112.  
R178: Inc 1 sts at left, Inc 1 sts at right. K114.  
Rows 179-185: K114.  
R186: Inc 1 sts at left, Inc 1 sts at right. K116.  
Rows 187-193: K116.  
R194: Inc 1 sts at left, Inc 1 sts at right. K118.  
Rows 195-201: K118.  
R202: Inc 1 sts at left, Inc 1 sts at right. K120.  
Rows 203-209: K120.  
R210: Inc 1 sts at left, Inc 1 sts at right. K122.  
Rows 211-217: K122.  
R218: Inc 1 sts at left, Inc 1 sts at right. K124.  
Rows 219-225: K124.  
R226: Inc 1 sts at left, Inc 1 sts at right. K126.  
Rows 227-233: K126.  
R234: Inc 1 sts at left, Inc 1 sts at right. K128.  
Rows 235-241: K128.  
R242: Inc 1 sts at left, Inc 1 sts at right. K130.  
Rows 243-249: K130.  
R250: Inc 1 sts at left, Inc 1 sts at right. K132.  
Rows 251-257: K132.  
R258: Inc 1 sts at left, Inc 1 sts at right. K134.  
Rows 259-265: K134.  
R266: Inc 1 sts at left, Inc 1 sts at right. K136.  
Rows 267-273: K136.  
R274: Inc 1 sts at left, Inc 1 sts at right. K138.  
Rows 275-281: K138.  
R282: Inc 1 sts at left, Inc 1 sts at right. K140.  
Rows 283-289: K140.  
R290: Inc 1 sts at left, Inc 1 sts at right. K142.  
Rows 291-303: K142.  
Cast off remainder. End of piece.

**Side welt:**

Set RC to 0.  
Cast on 24 sts (LN12..RN12) for K2 P2 Rib and Broken Toe Cast-on method.

Rows 1-96: K24.

At R97 start the first buttonhole (see the **Buttonhole** instructions at the end, after size XL instructions).

At R139 start the second buttonhole.

K24 for the rest of the rows until R366.

Cast off remainder. End of piece.



**www.knittitude.com**  
Cream-Colored Cardigan  
Standard Knitting Machine Pattern – Tuck  
S, M, L, XL Sizes

**Size XL**

**Front Left:**

Cast on 83 sts (LN41..RN42) for K2 P2 Rib and Broken Toe Cast-on method.

Knit 21 rows of K2 P2 Rib.

Finish with the carriage at right.

Transfer all the stitches to the main bed.

Set RC to 0.

Set carriage for Tuck.

Rows 1-300: K83.

R301: Dec 1 sts at right. K82.

Rows 302-306: K82.

R307: Dec 1 sts at right. K81.

Rows 308-312: K81.

R313: Dec 1 sts at right. K80.

Rows 314-318: K80.

R319: Dec 1 sts at right. K79.

Rows 320-324: K79.

R325: Dec 1 sts at right. K78.

Rows 326-330: K78.

R331: Dec 1 sts at right. K77.

Rows 332-336: K77.

R337: Dec 1 sts at right. K76.

Rows 338-342: K76.

R343: Dec 1 sts at right. K75.

Rows 344-348: K75.

R349: Dec 1 sts at right. K74.

Rows 350-355: K74.

R356: Dec 1 sts at right. K73.

Rows 357-362: K73.

R363: Dec 1 sts at right. K72.

Rows 364-369: K72.

R370: Dec 1 sts at right. K71.

Rows 371-376: K71.

R377: Dec 1 sts at right. K70.

Rows 378-383: K70.

R384: Dec 1 sts at right. K69.

Rows 385-390: K69.

R391: Dec 1 sts at right. K68.

Rows 392-397: K68.

R398: Dec 1 sts at right. K67.

Rows 399-404: K67.

R405: Dec 1 sts at right. K66.

Rows 406-411: K66.

R412: Dec 1 sts at right. K65.

Rows 413-418: K65.

R419: Dec 1 sts at right. K64.

Rows 420-425: K64.

R426: Dec 1 sts at right. K63.

Rows 427-432: K63.

R433: Dec 1 sts at right. K62.

Rows 434-439: K62.

R440: Dec 1 sts at right. K61.

**www.knittitude.com**  
Cream-Colored Cardigan  
Standard Knitting Machine Pattern – Tuck  
S, M, L, XL Sizes

Rows 441-446: K61.  
R447: Dec 1 sts at right. K60.  
Rows 448-453: K60.  
R454: Dec 1 sts at right. K59.  
Rows 455-460: K59.  
R461: Dec 1 sts at right. K58.  
Rows 462-467: K58.  
R468: Dec 1 sts at right. K57.  
Rows 469-474: K57.  
Cast off remainder. End of piece.

**Front Right:**

Cast on 83 sts (LN41..RN42) for K2 P2 Rib and Broken Toe Cast-on method.  
Knit 21 rows of K2 P2 Rib.  
Finish with the carriage at right.  
Transfer all the stitches to the main bed.  
Set RC to 0.  
Set carriage for Tuck.

Rows 1-300: K83.  
R301: Dec 1 sts at left. K82.  
Rows 302-306: K82.  
R307: Dec 1 sts at left. K81.  
Rows 308-312: K81.  
R313: Dec 1 sts at left. K80.  
Rows 314-318: K80.  
R319: Dec 1 sts at left. K79.  
Rows 320-324: K79.  
R325: Dec 1 sts at left. K78.  
Rows 326-330: K78.  
R331: Dec 1 sts at left. K77.  
Rows 332-336: K77.  
R337: Dec 1 sts at left. K76.  
Rows 338-342: K76.  
R343: Dec 1 sts at left. K75.  
Rows 344-348: K75.  
R349: Dec 1 sts at left. K74.  
Rows 350-355: K74.  
R356: Dec 1 sts at left. K73.  
Rows 357-362: K73.  
R363: Dec 1 sts at left. K72.  
Rows 364-369: K72.  
R370: Dec 1 sts at left. K71.  
Rows 371-376: K71.  
R377: Dec 1 sts at left. K70.  
Rows 378-383: K70.  
R384: Dec 1 sts at left. K69.  
Rows 385-390: K69.  
R391: Dec 1 sts at left. K68.  
Rows 392-397: K68.  
R398: Dec 1 sts at left. K67.  
Rows 399-404: K67.  
R405: Dec 1 sts at left. K66.  
Rows 406-411: K66.  
R412: Dec 1 sts at left. K65.  
Rows 413-418: K65.  
R419: Dec 1 sts at left. K64.

**www.knittitude.com**  
Cream-Colored Cardigan  
Standard Knitting Machine Pattern – Tuck  
S, M, L, XL Sizes

Rows 420-425: K64.  
R426: Dec 1 sts at left. K63.  
Rows 427-432: K63.  
R433: Dec 1 sts at left. K62.  
Rows 434-439: K62.  
R440: Dec 1 sts at left. K61.  
Rows 441-446: K61.  
R447: Dec 1 sts at left. K60.  
Rows 448-453: K60.  
R454: Dec 1 sts at left. K59.  
Rows 455-460: K59.  
R461: Dec 1 sts at left. K58.  
Rows 462-467: K58.  
R468: Dec 1 sts at left. K57.  
Rows 469-474: K57.  
Cast off remainder. End of piece.

**Back:**

Cast on 166 sts (LN83..RN83) for K2 P2 Rib and Broken Toe Cast-on method.  
Knit 21 rows of K2 P2 Rib.  
Finish with the carriage at right.  
Transfer all the stitches to the main bed.  
Set RC to 0.  
Set carriage for Tuck.

Rows 2-474: K166.  
Cast off remainder. End of piece.

**Sleeve:**

Cast on 70 sts (LN40..RN40) for K2 P2 Rib and Broken Toe Cast-on method.  
Knit 21 rows of K2 P2 Rib.  
Finish with the carriage at right.  
Transfer all the stitches to the main bed.  
Set RC to 0.  
Set carriage for Tuck.

Rows 1-7: K70.  
R8: Inc 1 sts at left, Inc 1 sts at right. K72.  
Rows 9-14: K72.  
R15: Inc 1 sts at left, Inc 1 sts at right. K74.  
Rows 16-21: K74.  
R22: Inc 1 sts at left, Inc 1 sts at right. K76.  
Rows 23-28: K76.  
R29: Inc 1 sts at left, Inc 1 sts at right. K78.  
Rows 30-35: K78.  
R36: Inc 1 sts at left, Inc 1 sts at right. K80.  
Rows 37-42: K80.  
R43: Inc 1 sts at left, Inc 1 sts at right. K82.  
Rows 44-49: K82.  
R50: Inc 1 sts at left, Inc 1 sts at right. K84.  
Rows 51-56: K84.  
R57: Inc 1 sts at left, Inc 1 sts at right. K86.  
Rows 58-63: K86.  
R64: Inc 1 sts at left, Inc 1 sts at right. K88.  
Rows 65-70: K88.

**www.knittitude.com**  
**Cream-Colored Cardigan**  
**Standard Knitting Machine Pattern – Tuck**  
**S, M, L, XL Sizes**

R71: Inc 1 sts at left, Inc 1 sts at right. K90.  
Rows 72-77: K90.  
R78: Inc 1 sts at left, Inc 1 sts at right. K92.  
Rows 79-84: K92.  
R85: Inc 1 sts at left, Inc 1 sts at right. K94.  
Rows 86-91: K94.  
R92: Inc 1 sts at left, Inc 1 sts at right. K96.  
Rows 93-98: K96.  
R99: Inc 1 sts at left, Inc 1 sts at right. K98.  
Rows 100-105: K98.  
R106: Inc 1 sts at left, Inc 1 sts at right. K100.  
Rows 107-112: K100.  
R113: Inc 1 sts at left, Inc 1 sts at right. K102.  
Rows 114-119: K102.  
R120: Inc 1 sts at left, Inc 1 sts at right. K104.  
Rows 121-126: K104.  
R127: Inc 1 sts at left, Inc 1 sts at right. K106.  
Rows 128-133: K106.  
R134: Inc 1 sts at left, Inc 1 sts at right. K108.  
Rows 135-140: K108.  
R141: Inc 1 sts at left, Inc 1 sts at right. K110.  
Rows 142-147: K110.  
R148: Inc 1 sts at left, Inc 1 sts at right. K112.  
Rows 149-154: K112.  
R155: Inc 1 sts at left, Inc 1 sts at right. K114.  
Rows 156-161: K114.  
R162: Inc 1 sts at left, Inc 1 sts at right. K116.  
Rows 163-169: K116.  
R170: Inc 1 sts at left, Inc 1 sts at right. K118.  
Rows 171-177: K118.  
R178: Inc 1 sts at left, Inc 1 sts at right. K120.  
Rows 179-185: K120.  
R186: Inc 1 sts at left, Inc 1 sts at right. K122.  
Rows 187-193: K122.  
R194: Inc 1 sts at left, Inc 1 sts at right. K124.  
Rows 195-201: K124.  
R202: Inc 1 sts at left, Inc 1 sts at right. K126.  
Rows 203-209: K126.  
R210: Inc 1 sts at left, Inc 1 sts at right. K128.  
Rows 211-217: K128.  
R218: Inc 1 sts at left, Inc 1 sts at right. K130.  
Rows 219-225: K130.  
R226: Inc 1 sts at left, Inc 1 sts at right. K132.  
Rows 227-233: K132.  
R234: Inc 1 sts at left, Inc 1 sts at right. K134.  
Rows 235-241: K134.  
R242: Inc 1 sts at left, Inc 1 sts at right. K136.  
Rows 243-249: K136.  
R250: Inc 1 sts at left, Inc 1 sts at right. K138.  
Rows 251-257: K138.  
R258: Inc 1 sts at left, Inc 1 sts at right. K140.  
Rows 259-265: K140.  
R266: Inc 1 sts at left, Inc 1 sts at right. K142.  
Rows 267-273: K142.  
R274: Inc 1 sts at left, Inc 1 sts at right. K144.  
Rows 275-281: K144.  
R282: Inc 1 sts at left, Inc 1 sts at right. K146.  
Rows 283-289: K146.

**www.knittitude.com**  
Cream-Colored Cardigan  
Standard Knitting Machine Pattern – Tuck  
S, M, L, XL Sizes

R290: Inc 1 sts at left, Inc 1 sts at right. K148.  
Rows 291-297: K148.  
R298: Inc 1 sts at left, Inc 1 sts at right. K150.  
Rows 299-313: K150.  
Cast off remainder. End of piece.

**Side welt:**

Cast on 24 sts (LN12..RN12) for K2 P2 Rib and Broken Toe Cast-on method.  
Knit 21 rows of K2 P2 Rib.  
Finish with the carriage at right.  
Transfer all the stitches to the main bed.  
Set RC to 0.  
Set carriage for Tuck.

Rows 1-100: K24.  
At R101 start the first buttonhole (see the **Buttonhole** instructions below).  
At R145 start the second buttonhole.  
K24 for the rest of the rows until R382.  
Cast off remainder. End of piece.

**Buttonholes:**

When you reach the point you need to start the buttonhole (vertical buttonhole), you need to follow these steps:

- Remember the RC value
- put all the needles in hold position
- set the carriage to skip needles on hold
- cut the main yarn
- transfer the carriage on the other side
- unhold half of the needles from carriage side
- knit how many rows you consider to be necessary depending on the size of the buttons (for the size of the buttons I chose, I knitted 8 rows) - it is advisable to knit a swatch so you can determine how large the buttonhole must be for the buttons you want to use.
- cut the main yarn and put the recently worked needles in hold position
- transfer the carriage on the other side
- unhold the other half of the needles (from the carriage side)
- knit as many rows you knitted on the other side (in my case 8 rows)
- set RC to initial value + how many rows you knitted (in my case initial RC value + 8)
- set the carriage to knit all the needles (including those in hold position)
- knit the rest of the rows until the next buttonhole or the end of the piece.

Here is a video tutorial for vertical buttonholes:

<http://www.youtube.com/watch?v=C24Yvo4G1yI>

**www.knittitude.com**  
Cream-Colored Cardigan  
Standard Knitting Machine Pattern – Tuck  
S, M, L, XL Sizes

Sew the cardigan together and steam it using a garment steamer.

If you desire to write a review for this pattern, please do so at this page:

<http://knittitude.com/cream-colored-cardigan-machine-knitting-pattern/>

Thank you for download,

Happy Knitting,

Nicoleta Ganea

<http://knittitude.com>

