

www.knittitude.com

Mid-Length Red Skirt
Standard Knitting Machine Pattern – Tuck Rib
S, M, L, XL Sizes



www.knittitude.com

Mid-Length Red Skirt
Standard Knitting Machine Pattern – Tuck Rib
S, M, L, XL Sizes



www.knittitude.com

Mid-Length Red Skirt

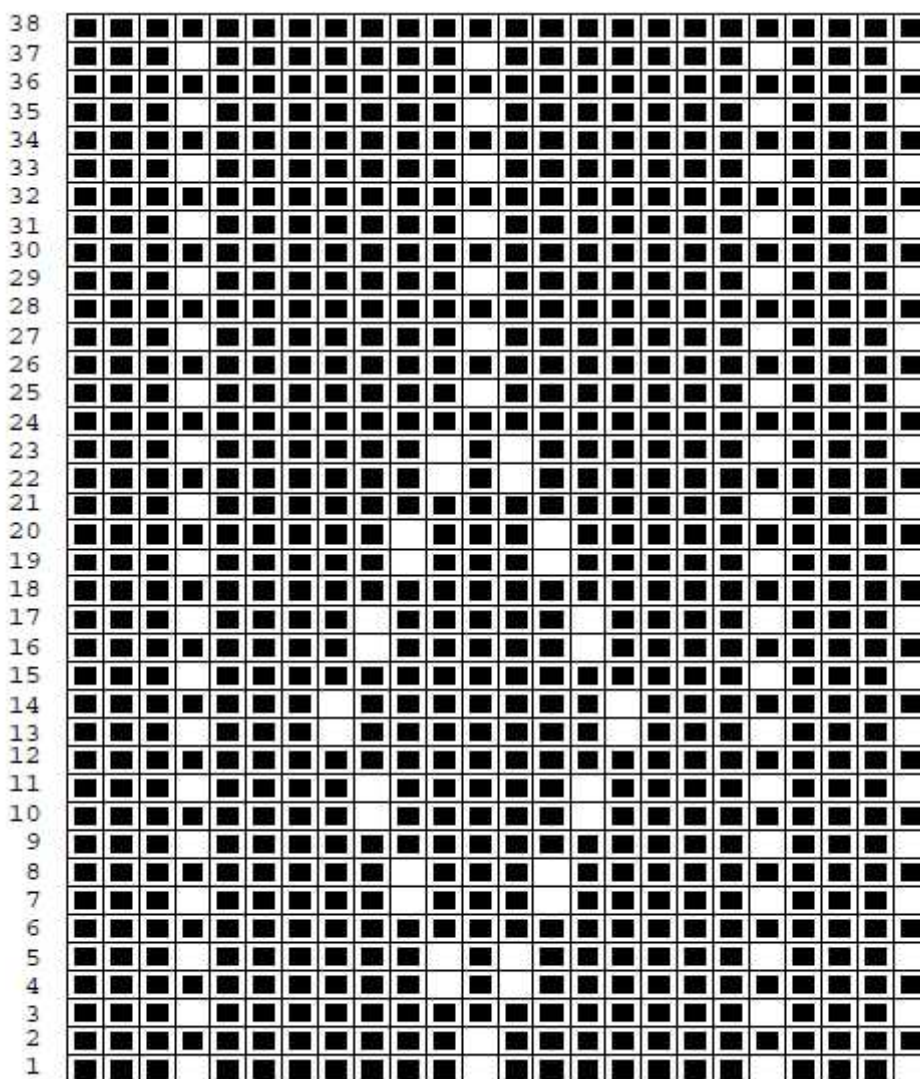
Standard Knitting Machine Pattern – Tuck Rib

S, M, L, XL Sizes

The skirt was knitted on my [Silver Reed SK 840](#) , standard electronic knitting machine, using main bed and [ribber SRP 60N](#).

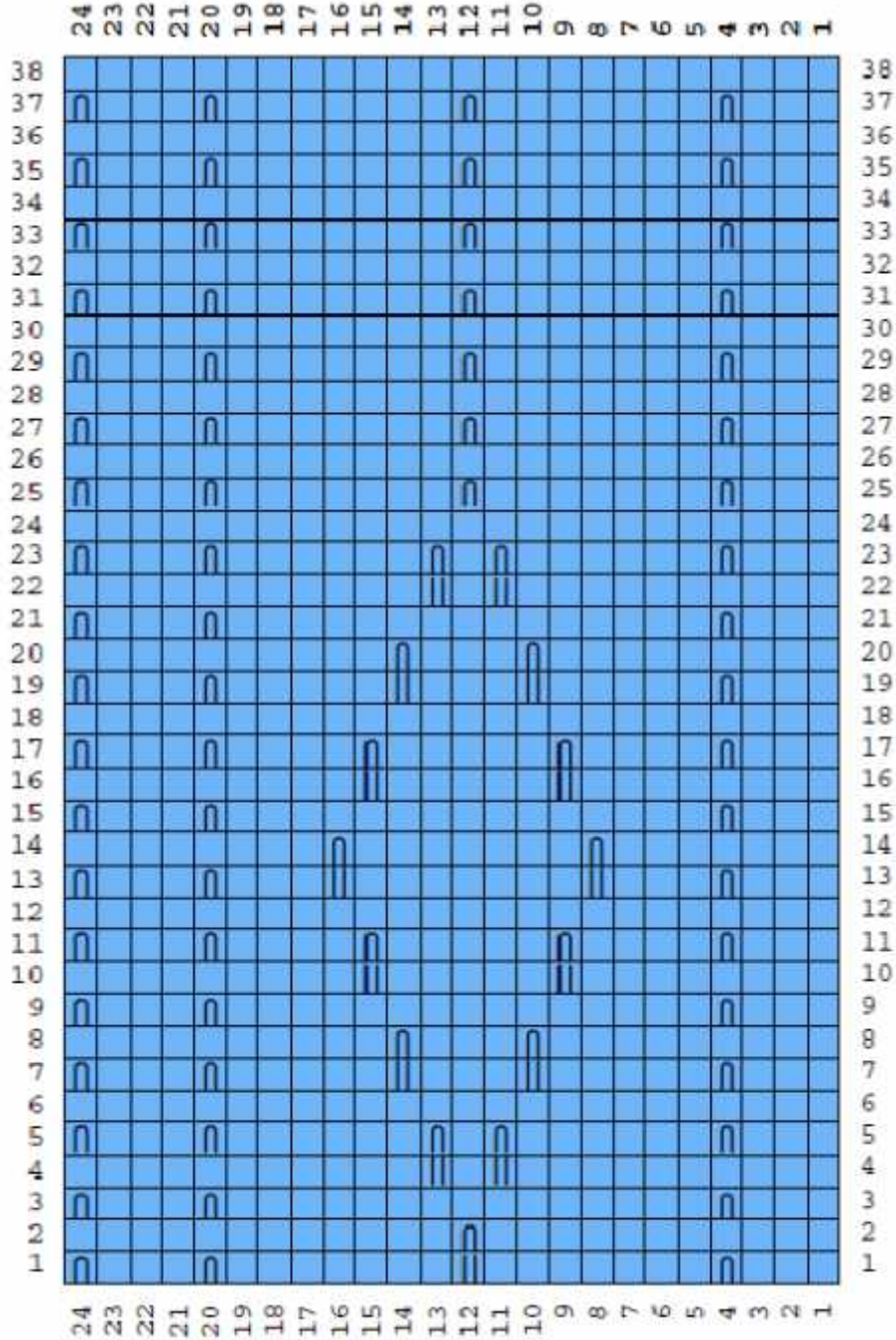
To be able to knit this pattern you need a standard (4.5mm) knitting machine and ribber. You need to know how to knit Double Rib and Tuck.

The Stitch Pattern Template



Mid-Length Red Skirt
 Standard Knitting Machine Pattern – Tuck Rib
 S, M, L, XL Sizes

The Stitch Pattern Symbols



Symbol

Abbreviation

(blank)

Knit

||

Tuck

∩

Tuck

www.knittitude.com
Mid-Length Red Skirt
Standard Knitting Machine Pattern – Tuck Rib
S, M, L, XL Sizes

Stitch Pattern Text (for the main bed)

| Abbreviation | Knitting instruction |
|--------------|----------------------|
| K | Knit. |
| T | Tuck. |

| | |
|------|---|
| R1: | K3, T1, K7, T1, K4, (K3, T1) twice. |
| R2: | K11, T1, K12. |
| R3: | K3, T1, K12, (K3, T1) twice. |
| R4: | K10, (T1, K1) twice; K10. |
| R5: | K3, (T1, K6, T1, K1) twice; K2, T1. |
| R6: | K24. |
| R7: | K3, T1, K4, (K1, T1, K2) twice; (K3, T1) twice. |
| R8: | K8, (K1, T1, K2) twice; K8. |
| R9: | K3, T1, K12, (K3, T1) twice. |
| R10: | K6, (K2, T1, K3) twice; K6. |
| R11: | K1, [(K2, T1, K2) twice; K1] twice; T1. |
| R12: | K24. |
| R13: | K3, T1, K3, T1, K7, T1, (K3, T1) twice. |
| R14: | K4, (K3, T1, K4) twice; K4. |
| R15: | K3, T1, K12, (K3, T1) twice. |
| R16: | K6, (K2, T1, K3) twice; K6. |
| R17: | K1, [(K2, T1, K2) twice; K1] twice; T1. |
| R18: | K24. |
| R19: | K3, T1, K4, (K1, T1, K2) twice; (K3, T1) twice. |
| R20: | K8, (K1, T1, K2) twice; K8. |
| R21: | K3, T1, K12, (K3, T1) twice. |
| R22: | K10, (T1, K1) twice; K10. |
| R23: | K3, (T1, K6, T1, K1) twice; K2, T1. |
| R24: | K24. |
| R25: | K3, T1, (K7, T1) twice; K3, T1. |
| R26: | K24. |
| R27: | K3, T1, (K7, T1) twice; K3, T1. |
| R28: | K24. |
| R29: | K3, T1, (K7, T1) twice; K3, T1. |
| R30: | K24. |
| R31: | K3, T1, (K7, T1) twice; K3, T1. |
| R32: | K24. |
| R33: | K3, T1, (K7, T1) twice; K3, T1. |
| R34: | K24. |
| R35: | K3, T1, (K7, T1) twice; K3, T1. |
| R36: | K24. |
| R37: | K3, T1, (K7, T1) twice; K3, T1. |
| R38: | K24. |

This is a tuck rib pattern, therefore the ribber is used for the whole garment. The needles are arranged for Double (Full) Rib, but the main carriage (of the main bed) is set to Tuck (T).

www.knittitude.com
Mid-Length Red Skirt
Standard Knitting Machine Pattern – Tuck Rib
S, M, L, XL Sizes

I used 3 strands of very thin red mercerized cotton yarn.

Stitch Pattern Gauge Swatch with **Tension 7, Stitch Dial 4:**

- 30.08 Stitches & 52.17 Rows per 10 cm (4 in).
- Or
- Width of 40 stitches - 13.3 cm (5.2 in);
- Height of 60 rows - 11.5 cm (4.5 in).

| Measurements | | | |
|--------------|--------------|---------------|-------------|
| Size | Bust (cm/in) | Waist (cm/in) | Hip (cm/in) |
| S 32" | 82cm / 32" | 62 / 24 | 87 / 34 |
| S 34" | 87cm / 34" | 67 / 26 | 92 / 36 |
| M 36" | 92cm / 36" | 72 / 28 | 97 / 38 |
| M 38" | 97cm / 38" | 77 / 30 | 102 / 40 |
| L 40" | 102cm / 40" | 82 / 32 | 107 / 42 |
| L 42" | 107cm / 42" | 87 / 34 | 112 / 44 |
| XL 44" | 112cm / 44" | 92 / 36 | 117 / 46 |
| XL 46" | 117cm / 46" | 97 / 38 | 122 / 48 |

Legend:

R - row

K - knit (ex: K50 - knit 50 stitches)

Sts - stitches

Dec - decrease

Inc - inscrease

Size S 32"

Panel:

Cast on 112 sts.

R1: K112.

Rows 2-13: As row 1.

When knitting the next row: Inc 1 sts at left, Inc 1 sts at right.

R14: K114.

Rows 15-27: As row 14 (without the shaping).

When knitting the next row: Inc 1 sts at left, Inc 1 sts at right.

R28: K116.

Rows 29-40: As row 28 (without the shaping).

When knitting the next row: Inc 1 sts at left, Inc 1 sts at right.

R41: K118.

Rows 42-53: As row 41 (without the shaping).

www.knittitude.com
Mid-Length Red Skirt
Standard Knitting Machine Pattern – Tuck Rib
S, M, L, XL Sizes

When knitting the next row: Inc 1 sts at left, Inc 1 sts at right.
R54: K120.
Rows 55-67: As row 54 (without the shaping).
When knitting the next row: Inc 1 sts at left, Inc 1 sts at right.
R68: K122.
Rows 69-80: As row 68 (without the shaping).
When knitting the next row: Inc 1 sts at left, Inc 1 sts at right.
R81: K124.
Rows 82-93: As row 81 (without the shaping).
When knitting the next row: Inc 1 sts at left, Inc 1 sts at right.
R94: K126.
Rows 95-107: As row 94 (without the shaping).
When knitting the next row: Inc 1 sts at left, Inc 1 sts at right.
R108: K128.
Rows 109-120: As row 108 (without the shaping).
When knitting the next row: Inc 1 sts at left, Inc 1 sts at right.
R121: K130.
Rows 122-133: As row 121 (without the shaping).
When knitting the next row: Inc 1 sts at left, Inc 1 sts at right.
R134: K132.
Rows 135-147: As row 134 (without the shaping).
When knitting the next row: Inc 1 sts at left, Inc 1 sts at right.
R148: K134.
Rows 149-160: As row 148 (without the shaping).
When knitting the next row: Inc 1 sts at left, Inc 1 sts at right.
R161: K136.
Rows 162-181: As row 161 (without the shaping).
When knitting the next row: Dec 1 sts at left, Dec 1 sts at right.
R182: K134.
Rows 183-186: As row 182 (without the shaping).
When knitting the next row: Dec 1 sts at left, Dec 1 sts at right.
R187: K132.
Rows 188-191: As row 187 (without the shaping).
When knitting the next row: Dec 1 sts at left, Dec 1 sts at right.
R192: K130.
Rows 193-196: As row 192 (without the shaping).
When knitting the next row: Dec 1 sts at left, Dec 1 sts at right.
R197: K128.
Rows 198-201: As row 197 (without the shaping).
When knitting the next row: Dec 1 sts at left, Dec 1 sts at right.
R202: K126.
Rows 203-206: As row 202 (without the shaping).
When knitting the next row: Dec 1 sts at left, Dec 1 sts at right.
R207: K124.
Rows 208-211: As row 207 (without the shaping).
When knitting the next row: Dec 1 sts at left, Dec 1 sts at right.
R212: K122.
Rows 213-216: As row 212 (without the shaping).
When knitting the next row: Dec 1 sts at left, Dec 1 sts at right.
R217: K120.
Rows 218-221: As row 217 (without the shaping).
When knitting the next row: Dec 1 sts at left, Dec 1 sts at right.
R222: K118.
Rows 223-226: As row 222 (without the shaping).
When knitting the next row: Dec 1 sts at left, Dec 1 sts at right.
R227: K116.
Rows 228-230: As row 227 (without the shaping).

www.knittitude.com
Mid-Length Red Skirt
Standard Knitting Machine Pattern – Tuck Rib
S, M, L, XL Sizes

When knitting the next row: Dec 1 sts at left, Dec 1 sts at right.
R231: K114.
Rows 232-234: As row 231 (without the shaping).
When knitting the next row: Dec 1 sts at left, Dec 1 sts at right.
R235: K112.
Rows 236-238: As row 235 (without the shaping).
When knitting the next row: Dec 1 sts at left, Dec 1 sts at right.
R239: K110.
Rows 240-242: As row 239 (without the shaping).
When knitting the next row: Dec 1 sts at left, Dec 1 sts at right.
R243: K108.
Rows 244-246: As row 243 (without the shaping).
When knitting the next row: Dec 1 sts at left, Dec 1 sts at right.
R247: K106.
Rows 248-250: As row 247 (without the shaping).
When knitting the next row: Dec 1 sts at left, Dec 1 sts at right.
R251: K104.
Rows 252-254: As row 251 (without the shaping).
When knitting the next row: Dec 1 sts at left, Dec 1 sts at right.
R255: K102.
Rows 256-258: As row 255 (without the shaping).
When knitting the next row: Dec 1 sts at left, Dec 1 sts at right.
R259: K100.
Rows 260-262: As row 259 (without the shaping).
When knitting the next row: Dec 1 sts at left, Dec 1 sts at right.
R263: K98.
Rows 264-266: As row 263 (without the shaping).
Cast off remainder. End of piece.

Waistband: Knit 43 rows of Double Rib. See **Waistband Instructions** at the end of the document.

Size S 34"

Panel:

Cast on 120 sts.
R1: K120.
Rows 2-15: As row 1.
When knitting the next row: Inc 1 sts at left, Inc 1 sts at right.
R16: K122.
Rows 17-30: As row 16 (without the shaping).
When knitting the next row: Inc 1 sts at left, Inc 1 sts at right.
R31: K124.
Rows 32-46: As row 31 (without the shaping).
When knitting the next row: Inc 1 sts at left, Inc 1 sts at right.
R47: K126.
Rows 48-61: As row 47 (without the shaping).
When knitting the next row: Inc 1 sts at left, Inc 1 sts at right.
R62: K128.
Rows 63-76: As row 62 (without the shaping).
When knitting the next row: Inc 1 sts at left, Inc 1 sts at right.
R77: K130.
Rows 78-91: As row 77 (without the shaping).
When knitting the next row: Inc 1 sts at left, Inc 1 sts at right.
R92: K132.

www.knittitude.com
Mid-Length Red Skirt
Standard Knitting Machine Pattern – Tuck Rib
S, M, L, XL Sizes

Rows 93-106: As row 92 (without the shaping).
When knitting the next row: Inc 1 sts at left, Inc 1 sts at right.
R107: K134.
Rows 108-121: As row 107 (without the shaping).
When knitting the next row: Inc 1 sts at left, Inc 1 sts at right.
R122: K136.
Rows 123-137: As row 122 (without the shaping).
When knitting the next row: Inc 1 sts at left, Inc 1 sts at right.
R138: K138.
Rows 139-152: As row 138 (without the shaping).
When knitting the next row: Inc 1 sts at left, Inc 1 sts at right.
R153: K140.
Rows 154-167: As row 153 (without the shaping).
When knitting the next row: Inc 1 sts at left, Inc 1 sts at right.
R168: K142.
Rows 169-182: As row 168 (without the shaping).
When knitting the next row: Inc 1 sts at left, Inc 1 sts at right.
R183: K144.
Rows 184-202: As row 183 (without the shaping).
When knitting the next row: Dec 1 sts at left, Dec 1 sts at right.
R203: K142.
Rows 204-207: As row 203 (without the shaping).
When knitting the next row: Dec 1 sts at left, Dec 1 sts at right.
R208: K140.
Rows 209-212: As row 208 (without the shaping).
When knitting the next row: Dec 1 sts at left, Dec 1 sts at right.
R213: K138.
Rows 214-217: As row 213 (without the shaping).
When knitting the next row: Dec 1 sts at left, Dec 1 sts at right.
R218: K136.
Rows 219-222: As row 218 (without the shaping).
When knitting the next row: Dec 1 sts at left, Dec 1 sts at right.
R223: K134.
Rows 224-227: As row 223 (without the shaping).
When knitting the next row: Dec 1 sts at left, Dec 1 sts at right.
R228: K132.
Rows 229-232: As row 228 (without the shaping).
When knitting the next row: Dec 1 sts at left, Dec 1 sts at right.
R233: K130.
Rows 234-237: As row 233 (without the shaping).
When knitting the next row: Dec 1 sts at left, Dec 1 sts at right.
R238: K128.
Rows 239-242: As row 238 (without the shaping).
When knitting the next row: Dec 1 sts at left, Dec 1 sts at right.
R243: K126.
Rows 244-247: As row 243 (without the shaping).
When knitting the next row: Dec 1 sts at left, Dec 1 sts at right.
R248: K124.
Rows 249-251: As row 248 (without the shaping).
When knitting the next row: Dec 1 sts at left, Dec 1 sts at right.
R252: K122.
Rows 253-255: As row 252 (without the shaping).
When knitting the next row: Dec 1 sts at left, Dec 1 sts at right.
R256: K120.
Rows 257-259: As row 256 (without the shaping).
When knitting the next row: Dec 1 sts at left, Dec 1 sts at right.
R260: K118.

www.knittitude.com
Mid-Length Red Skirt
Standard Knitting Machine Pattern – Tuck Rib
S, M, L, XL Sizes

Rows 261-263: As row 260 (without the shaping).
When knitting the next row: Dec 1 sts at left, Dec 1 sts at right.
R264: K116.
Rows 265-267: As row 264 (without the shaping).
When knitting the next row: Dec 1 sts at left, Dec 1 sts at right.
R268: K114.
Rows 269-271: As row 268 (without the shaping).
When knitting the next row: Dec 1 sts at left, Dec 1 sts at right.
R272: K112.
Rows 273-275: As row 272 (without the shaping).
When knitting the next row: Dec 1 sts at left, Dec 1 sts at right.
R276: K110.
Rows 277-279: As row 276 (without the shaping).
When knitting the next row: Dec 1 sts at left, Dec 1 sts at right.
R280: K108.
Rows 281-283: As row 280 (without the shaping).
When knitting the next row: Dec 1 sts at left, Dec 1 sts at right.
R284: K106.
Rows 285-287: As row 284 (without the shaping).
Cast off remainder. End of piece.

Waistband: Knit 43 rows of Double Rib. See **Waistband Instructions** at the end of the document.

Size M 36"

Panel:

Cast on 130 sts.
R1: K130.
Rows 2-17: As row 1.
When knitting the next row: Inc 1 sts at left, Inc 1 sts at right.
R18: K132.
Rows 19-33: As row 18 (without the shaping).
When knitting the next row: Inc 1 sts at left, Inc 1 sts at right.
R34: K134.
Rows 35-50: As row 34 (without the shaping).
When knitting the next row: Inc 1 sts at left, Inc 1 sts at right.
R51: K136.
Rows 52-67: As row 51 (without the shaping).
When knitting the next row: Inc 1 sts at left, Inc 1 sts at right.
R68: K138.
Rows 69-83: As row 68 (without the shaping).
When knitting the next row: Inc 1 sts at left, Inc 1 sts at right.
R84: K140.
Rows 85-100: As row 84 (without the shaping).
When knitting the next row: Inc 1 sts at left, Inc 1 sts at right.
R101: K142.
Rows 102-116: As row 101 (without the shaping).
When knitting the next row: Inc 1 sts at left, Inc 1 sts at right.
R117: K144.
Rows 118-133: As row 117 (without the shaping).
When knitting the next row: Inc 1 sts at left, Inc 1 sts at right.
R134: K146.
Rows 135-150: As row 134 (without the shaping).
When knitting the next row: Inc 1 sts at left, Inc 1 sts at right.

www.knittitude.com
Mid-Length Red Skirt
Standard Knitting Machine Pattern – Tuck Rib
S, M, L, XL Sizes

R151: K148.
Rows 152-166: As row 151 (without the shaping).
When knitting the next row: Inc 1 sts at left, Inc 1 sts at right.
R167: K150.
Rows 168-183: As row 167 (without the shaping).
When knitting the next row: Inc 1 sts at left, Inc 1 sts at right.
R184: K152.
Rows 185-204: As row 184 (without the shaping).
When knitting the next row: Dec 1 sts at left, Dec 1 sts at right.
R205: K150.
Rows 206-209: As row 205 (without the shaping).
When knitting the next row: Dec 1 sts at left, Dec 1 sts at right.
R210: K148.
Rows 211-214: As row 210 (without the shaping).
When knitting the next row: Dec 1 sts at left, Dec 1 sts at right.
R215: K146.
Rows 216-219: As row 215 (without the shaping).
When knitting the next row: Dec 1 sts at left, Dec 1 sts at right.
R220: K144.
Rows 221-224: As row 220 (without the shaping).
When knitting the next row: Dec 1 sts at left, Dec 1 sts at right.
R225: K142.
Rows 226-229: As row 225 (without the shaping).
When knitting the next row: Dec 1 sts at left, Dec 1 sts at right.
R230: K140.
Rows 231-234: As row 230 (without the shaping).
When knitting the next row: Dec 1 sts at left, Dec 1 sts at right.
R235: K138.
Rows 236-239: As row 235 (without the shaping).
When knitting the next row: Dec 1 sts at left, Dec 1 sts at right.
R240: K136.
Rows 241-244: As row 240 (without the shaping).
When knitting the next row: Dec 1 sts at left, Dec 1 sts at right.
R245: K134.
Rows 246-249: As row 245 (without the shaping).
When knitting the next row: Dec 1 sts at left, Dec 1 sts at right.
R250: K132.
Rows 251-254: As row 250 (without the shaping).
When knitting the next row: Dec 1 sts at left, Dec 1 sts at right.
R255: K130.
Rows 256-259: As row 255 (without the shaping).
When knitting the next row: Dec 1 sts at left, Dec 1 sts at right.
R260: K128.
Rows 261-264: As row 260 (without the shaping).
When knitting the next row: Dec 1 sts at left, Dec 1 sts at right.
R265: K126.
Rows 266-268: As row 265 (without the shaping).
When knitting the next row: Dec 1 sts at left, Dec 1 sts at right.
R269: K124.
Rows 270-272: As row 269 (without the shaping).
When knitting the next row: Dec 1 sts at left, Dec 1 sts at right.
R273: K122.
Rows 274-276: As row 273 (without the shaping).
When knitting the next row: Dec 1 sts at left, Dec 1 sts at right.
R277: K120.
Rows 278-280: As row 277 (without the shaping).
When knitting the next row: Dec 1 sts at left, Dec 1 sts at right.

www.knittitude.com
Mid-Length Red Skirt
Standard Knitting Machine Pattern – Tuck Rib
S, M, L, XL Sizes

R281: K118.
Rows 282-284: As row 281 (without the shaping).
When knitting the next row: Dec 1 sts at left, Dec 1 sts at right.
R285: K116.
Rows 286-288: As row 285 (without the shaping).
When knitting the next row: Dec 1 sts at left, Dec 1 sts at right.
R289: K114.
Rows 290-292: As row 289 (without the shaping).
Cast off remainder. End of piece.

Waistband: Knit 43 rows of Double Rib. See **Waistband Instructions** at the end of the document.

Size M 38"

Panel:

Cast on 138 sts.
R1: K138.
Rows 2-17: As row 1.
When knitting the next row: Inc 1 sts at left, Inc 1 sts at right.
R18: K140.
Rows 19-34: As row 18 (without the shaping).
When knitting the next row: Inc 1 sts at left, Inc 1 sts at right.
R35: K142.
Rows 36-51: As row 35 (without the shaping).
When knitting the next row: Inc 1 sts at left, Inc 1 sts at right.
R52: K144.
Rows 53-68: As row 52 (without the shaping).
When knitting the next row: Inc 1 sts at left, Inc 1 sts at right.
R69: K146.
Rows 70-85: As row 69 (without the shaping).
When knitting the next row: Inc 1 sts at left, Inc 1 sts at right.
R86: K148.
Rows 87-103: As row 86 (without the shaping).
When knitting the next row: Inc 1 sts at left, Inc 1 sts at right.
R104: K150.
Rows 105-120: As row 104 (without the shaping).
When knitting the next row: Inc 1 sts at left, Inc 1 sts at right.
R121: K152.
Rows 122-137: As row 121 (without the shaping).
When knitting the next row: Inc 1 sts at left, Inc 1 sts at right.
R138: K154.
Rows 139-154: As row 138 (without the shaping).
When knitting the next row: Inc 1 sts at left, Inc 1 sts at right.
R155: K156.
Rows 156-171: As row 155 (without the shaping).
When knitting the next row: Inc 1 sts at left, Inc 1 sts at right.
R172: K158.
Rows 173-188: As row 172 (without the shaping).
When knitting the next row: Inc 1 sts at left, Inc 1 sts at right.
R189: K160.
Rows 190-209: As row 189 (without the shaping).
When knitting the next row: Dec 1 sts at left, Dec 1 sts at right.
R210: K158.
Rows 211-214: As row 210 (without the shaping).

www.knittitude.com
Mid-Length Red Skirt
Standard Knitting Machine Pattern – Tuck Rib
S, M, L, XL Sizes

When knitting the next row: Dec 1 sts at left, Dec 1 sts at right.
R215: K156.
Rows 216-219: As row 215 (without the shaping).
When knitting the next row: Dec 1 sts at left, Dec 1 sts at right.
R220: K154.
Rows 221-224: As row 220 (without the shaping).
When knitting the next row: Dec 1 sts at left, Dec 1 sts at right.
R225: K152.
Rows 226-229: As row 225 (without the shaping).
When knitting the next row: Dec 1 sts at left, Dec 1 sts at right.
R230: K150.
Rows 231-234: As row 230 (without the shaping).
When knitting the next row: Dec 1 sts at left, Dec 1 sts at right.
R235: K148.
Rows 236-239: As row 235 (without the shaping).
When knitting the next row: Dec 1 sts at left, Dec 1 sts at right.
R240: K146.
Rows 241-244: As row 240 (without the shaping).
When knitting the next row: Dec 1 sts at left, Dec 1 sts at right.
R245: K144.
Rows 246-249: As row 245 (without the shaping).
When knitting the next row: Dec 1 sts at left, Dec 1 sts at right.
R250: K142.
Rows 251-254: As row 250 (without the shaping).
When knitting the next row: Dec 1 sts at left, Dec 1 sts at right.
R255: K140.
Rows 256-259: As row 255 (without the shaping).
When knitting the next row: Dec 1 sts at left, Dec 1 sts at right.
R260: K138.
Rows 261-264: As row 260 (without the shaping).
When knitting the next row: Dec 1 sts at left, Dec 1 sts at right.
R265: K136.
Rows 266-269: As row 265 (without the shaping).
When knitting the next row: Dec 1 sts at left, Dec 1 sts at right.
R270: K134.
Rows 271-273: As row 270 (without the shaping).
When knitting the next row: Dec 1 sts at left, Dec 1 sts at right.
R274: K132.
Rows 275-277: As row 274 (without the shaping).
When knitting the next row: Dec 1 sts at left, Dec 1 sts at right.
R278: K130.
Rows 279-281: As row 278 (without the shaping).
When knitting the next row: Dec 1 sts at left, Dec 1 sts at right.
R282: K128.
Rows 283-285: As row 282 (without the shaping).
When knitting the next row: Dec 1 sts at left, Dec 1 sts at right.
R286: K126.
Rows 287-289: As row 286 (without the shaping).
When knitting the next row: Dec 1 sts at left, Dec 1 sts at right.
R290: K124.
Rows 291-293: As row 290 (without the shaping).
When knitting the next row: Dec 1 sts at left, Dec 1 sts at right.
R294: K122.
Rows 295-297: As row 294 (without the shaping).
Cast off remainder. End of piece.

www.knittitude.com
Mid-Length Red Skirt
Standard Knitting Machine Pattern – Tuck Rib
S, M, L, XL Sizes

Waistband: Knit 43 rows of Double Rib. See **Waistband Instructions** at the end of the document.

Size L 40"

Panel:

Cast on 150 sts.

R1: K150.

Rows 2-20: As row 1.

When knitting the next row: Inc 1 sts at left, Inc 1 sts at right.

R21: K152.

Rows 22-40: As row 21 (without the shaping).

When knitting the next row: Inc 1 sts at left, Inc 1 sts at right.

R41: K154.

Rows 42-60: As row 41 (without the shaping).

When knitting the next row: Inc 1 sts at left, Inc 1 sts at right.

R61: K156.

Rows 62-80: As row 61 (without the shaping).

When knitting the next row: Inc 1 sts at left, Inc 1 sts at right.

R81: K158.

Rows 82-100: As row 81 (without the shaping).

When knitting the next row: Inc 1 sts at left, Inc 1 sts at right.

R101: K160.

Rows 102-120: As row 101 (without the shaping).

When knitting the next row: Inc 1 sts at left, Inc 1 sts at right.

R121: K162.

Rows 122-140: As row 121 (without the shaping).

When knitting the next row: Inc 1 sts at left, Inc 1 sts at right.

R141: K164.

Rows 142-160: As row 141 (without the shaping).

When knitting the next row: Inc 1 sts at left, Inc 1 sts at right.

R161: K166.

Rows 162-180: As row 161 (without the shaping).

When knitting the next row: Inc 1 sts at left, Inc 1 sts at right.

R181: K168.

Rows 182-206: As row 181 (without the shaping).

When knitting the next row: Dec 1 sts at left, Dec 1 sts at right.

R207: K166.

Rows 208-211: As row 207 (without the shaping).

When knitting the next row: Dec 1 sts at left, Dec 1 sts at right.

R212: K164.

Rows 213-216: As row 212 (without the shaping).

When knitting the next row: Dec 1 sts at left, Dec 1 sts at right.

R217: K162.

Rows 218-221: As row 217 (without the shaping).

When knitting the next row: Dec 1 sts at left, Dec 1 sts at right.

R222: K160.

Rows 223-226: As row 222 (without the shaping).

When knitting the next row: Dec 1 sts at left, Dec 1 sts at right.

R227: K158.

Rows 228-231: As row 227 (without the shaping).

When knitting the next row: Dec 1 sts at left, Dec 1 sts at right.

R232: K156.

Rows 233-236: As row 232 (without the shaping).

When knitting the next row: Dec 1 sts at left, Dec 1 sts at right.

www.knittitude.com
Mid-Length Red Skirt
Standard Knitting Machine Pattern – Tuck Rib
S, M, L, XL Sizes

R237: K154.

Rows 238-241: As row 237 (without the shaping).

When knitting the next row: Dec 1 sts at left, Dec 1 sts at right.

R242: K152.

Rows 243-246: As row 242 (without the shaping).

When knitting the next row: Dec 1 sts at left, Dec 1 sts at right.

R247: K150.

Rows 248-251: As row 247 (without the shaping).

When knitting the next row: Dec 1 sts at left, Dec 1 sts at right.

R252: K148.

Rows 253-256: As row 252 (without the shaping).

When knitting the next row: Dec 1 sts at left, Dec 1 sts at right.

R257: K146.

Rows 258-261: As row 257 (without the shaping).

When knitting the next row: Dec 1 sts at left, Dec 1 sts at right.

R262: K144.

Rows 263-266: As row 262 (without the shaping).

When knitting the next row: Dec 1 sts at left, Dec 1 sts at right.

R267: K142.

Rows 268-271: As row 267 (without the shaping).

When knitting the next row: Dec 1 sts at left, Dec 1 sts at right.

R272: K140.

Rows 273-276: As row 272 (without the shaping).

When knitting the next row: Dec 1 sts at left, Dec 1 sts at right.

R277: K138.

Rows 278-281: As row 277 (without the shaping).

When knitting the next row: Dec 1 sts at left, Dec 1 sts at right.

R282: K136.

Rows 283-285: As row 282 (without the shaping).

When knitting the next row: Dec 1 sts at left, Dec 1 sts at right.

R286: K134.

Rows 287-289: As row 286 (without the shaping).

When knitting the next row: Dec 1 sts at left, Dec 1 sts at right.

R290: K132.

Rows 291-293: As row 290 (without the shaping).

When knitting the next row: Dec 1 sts at left, Dec 1 sts at right.

R294: K130.

Rows 295-297: As row 294 (without the shaping).

Cast off remainder. End of piece.

Waistband: Knit 43 rows of Double Rib. See **Waistband Instructions** at the end of the document.

Size L 42"

Panel:

Cast on 158 sts.

R1: K158.

Rows 2-20: As row 1.

When knitting the next row: Inc 1 sts at left, Inc 1 sts at right.

R21: K160.

Rows 22-39: As row 21 (without the shaping).

When knitting the next row: Inc 1 sts at left, Inc 1 sts at right.

R40: K162.

Rows 41-59: As row 40 (without the shaping).

www.knittitude.com
Mid-Length Red Skirt
Standard Knitting Machine Pattern – Tuck Rib
S, M, L, XL Sizes

When knitting the next row: Inc 1 sts at left, Inc 1 sts at right.
R60: K164.
Rows 61-79: As row 60 (without the shaping).
When knitting the next row: Inc 1 sts at left, Inc 1 sts at right.
R80: K166.
Rows 81-98: As row 80 (without the shaping).
When knitting the next row: Inc 1 sts at left, Inc 1 sts at right.
R99: K168.
Rows 100-118: As row 99 (without the shaping).
When knitting the next row: Inc 1 sts at left, Inc 1 sts at right.
R119: K170.
Rows 120-138: As row 119 (without the shaping).
When knitting the next row: Inc 1 sts at left, Inc 1 sts at right.
R139: K172.
Rows 140-157: As row 139 (without the shaping).
When knitting the next row: Inc 1 sts at left, Inc 1 sts at right.
R158: K174.
Rows 159-177: As row 158 (without the shaping).
When knitting the next row: Inc 1 sts at left, Inc 1 sts at right.
R178: K176.
Rows 179-203: As row 178 (without the shaping).
When knitting the next row: Dec 1 sts at left, Dec 1 sts at right.
R204: K174.
Rows 205-208: As row 204 (without the shaping).
When knitting the next row: Dec 1 sts at left, Dec 1 sts at right.
R209: K172.
Rows 210-213: As row 209 (without the shaping).
When knitting the next row: Dec 1 sts at left, Dec 1 sts at right.
R214: K170.
Rows 215-218: As row 214 (without the shaping).
When knitting the next row: Dec 1 sts at left, Dec 1 sts at right.
R219: K168.
Rows 220-223: As row 219 (without the shaping).
When knitting the next row: Dec 1 sts at left, Dec 1 sts at right.
R224: K166.
Rows 225-228: As row 224 (without the shaping).
When knitting the next row: Dec 1 sts at left, Dec 1 sts at right.
R229: K164.
Rows 230-233: As row 229 (without the shaping).
When knitting the next row: Dec 1 sts at left, Dec 1 sts at right.
R234: K162.
Rows 235-238: As row 234 (without the shaping).
When knitting the next row: Dec 1 sts at left, Dec 1 sts at right.
R239: K160.
Rows 240-243: As row 239 (without the shaping).
When knitting the next row: Dec 1 sts at left, Dec 1 sts at right.
R244: K158.
Rows 245-248: As row 244 (without the shaping).
When knitting the next row: Dec 1 sts at left, Dec 1 sts at right.
R249: K156.
Rows 250-253: As row 249 (without the shaping).
When knitting the next row: Dec 1 sts at left, Dec 1 sts at right.
R254: K154.
Rows 255-258: As row 254 (without the shaping).
When knitting the next row: Dec 1 sts at left, Dec 1 sts at right.
R259: K152.
Rows 260-263: As row 259 (without the shaping).

www.knittitude.com
Mid-Length Red Skirt
Standard Knitting Machine Pattern – Tuck Rib
S, M, L, XL Sizes

When knitting the next row: Dec 1 sts at left, Dec 1 sts at right.
R264: K150.
Rows 265-268: As row 264 (without the shaping).
When knitting the next row: Dec 1 sts at left, Dec 1 sts at right.
R269: K148.
Rows 270-273: As row 269 (without the shaping).
When knitting the next row: Dec 1 sts at left, Dec 1 sts at right.
R274: K146.
Rows 275-278: As row 274 (without the shaping).
When knitting the next row: Dec 1 sts at left, Dec 1 sts at right.
R279: K144.
Rows 280-283: As row 279 (without the shaping).
When knitting the next row: Dec 1 sts at left, Dec 1 sts at right.
R284: K142.
Rows 285-288: As row 284 (without the shaping).
When knitting the next row: Dec 1 sts at left, Dec 1 sts at right.
R289: K140.
Rows 290-293: As row 289 (without the shaping).
When knitting the next row: Dec 1 sts at left, Dec 1 sts at right.
R294: K138.
Rows 295-297: As row 294 (without the shaping).
Cast off remainder. End of piece.

Waistband: Knit 52 rows of Double Rib. See **Waistband Instructions** at the end of the document.

Size XL 44"

Panel:

Cast on 168 sts.
R1: K168.
Rows 2-20: As row 1.
When knitting the next row: Inc 1 sts at left, Inc 1 sts at right.
R21: K170.
Rows 22-40: As row 21 (without the shaping).
When knitting the next row: Inc 1 sts at left, Inc 1 sts at right.
R41: K172.
Rows 42-61: As row 41 (without the shaping).
When knitting the next row: Inc 1 sts at left, Inc 1 sts at right.
R62: K174.
Rows 63-81: As row 62 (without the shaping).
When knitting the next row: Inc 1 sts at left, Inc 1 sts at right.
R82: K176.
Rows 83-101: As row 82 (without the shaping).
When knitting the next row: Inc 1 sts at left, Inc 1 sts at right.
R102: K178.
Rows 103-121: As row 102 (without the shaping).
When knitting the next row: Inc 1 sts at left, Inc 1 sts at right.
R122: K180.
Rows 123-142: As row 122 (without the shaping).
When knitting the next row: Inc 1 sts at left, Inc 1 sts at right.
R143: K182.
Rows 144-162: As row 143 (without the shaping).
When knitting the next row: Inc 1 sts at left, Inc 1 sts at right.
R163: K184.

www.knittitude.com
Mid-Length Red Skirt
Standard Knitting Machine Pattern – Tuck Rib
S, M, L, XL Sizes

Rows 164-182: As row 163 (without the shaping).
When knitting the next row: Inc 1 sts at left, Inc 1 sts at right.
R183: K186.

Rows 184-208: As row 183 (without the shaping).
When knitting the next row: Dec 1 sts at left, Dec 1 sts at right.
R209: K184.

Rows 210-213: As row 209 (without the shaping).
When knitting the next row: Dec 1 sts at left, Dec 1 sts at right.
R214: K182.

Rows 215-218: As row 214 (without the shaping).
When knitting the next row: Dec 1 sts at left, Dec 1 sts at right.
R219: K180.

Rows 220-223: As row 219 (without the shaping).
When knitting the next row: Dec 1 sts at left, Dec 1 sts at right.
R224: K178.

Rows 225-228: As row 224 (without the shaping).
When knitting the next row: Dec 1 sts at left, Dec 1 sts at right.
R229: K176.

Rows 230-233: As row 229 (without the shaping).
When knitting the next row: Dec 1 sts at left, Dec 1 sts at right.
R234: K174.

Rows 235-238: As row 234 (without the shaping).
When knitting the next row: Dec 1 sts at left, Dec 1 sts at right.
R239: K172.

Rows 240-243: As row 239 (without the shaping).
When knitting the next row: Dec 1 sts at left, Dec 1 sts at right.
R244: K170.

Rows 245-248: As row 244 (without the shaping).
When knitting the next row: Dec 1 sts at left, Dec 1 sts at right.
R249: K168.

Rows 250-253: As row 249 (without the shaping).
When knitting the next row: Dec 1 sts at left, Dec 1 sts at right.
R254: K166.

Rows 255-258: As row 254 (without the shaping).
When knitting the next row: Dec 1 sts at left, Dec 1 sts at right.
R259: K164.

Rows 260-263: As row 259 (without the shaping).
When knitting the next row: Dec 1 sts at left, Dec 1 sts at right.
R264: K162.

Rows 265-268: As row 264 (without the shaping).
When knitting the next row: Dec 1 sts at left, Dec 1 sts at right.
R269: K160.

Rows 270-273: As row 269 (without the shaping).
When knitting the next row: Dec 1 sts at left, Dec 1 sts at right.
R274: K158.

Rows 275-278: As row 274 (without the shaping).
When knitting the next row: Dec 1 sts at left, Dec 1 sts at right.
R279: K156.

Rows 280-283: As row 279 (without the shaping).
When knitting the next row: Dec 1 sts at left, Dec 1 sts at right.
R284: K154.

Rows 285-288: As row 284 (without the shaping).
When knitting the next row: Dec 1 sts at left, Dec 1 sts at right.
R289: K152.

Rows 290-293: As row 289 (without the shaping).
When knitting the next row: Dec 1 sts at left, Dec 1 sts at right.
R294: K150.

www.knittitude.com
Mid-Length Red Skirt
Standard Knitting Machine Pattern – Tuck Rib
S, M, L, XL Sizes

Rows 295-298: As row 294 (without the shaping).
When knitting the next row: Dec 1 sts at left, Dec 1 sts at right.
R299: K148.
Rows 300-303: As row 299 (without the shaping).
Cast off remainder. End of piece.

Waistband: Knit 52 rows of Double Rib. See **Waistband Instructions** at the end of the document.

Size XL 46"

Panel:

Cast on 176 sts.
R1: K176.
Rows 2-22: As row 1.
When knitting the next row: Inc 1 sts at left, Inc 1 sts at right.
R23: K178.
Rows 24-45: As row 23 (without the shaping).
When knitting the next row: Inc 1 sts at left, Inc 1 sts at right.
R46: K180.
Rows 47-67: As row 46 (without the shaping).
When knitting the next row: Inc 1 sts at left, Inc 1 sts at right.
R68: K182.
Rows 69-90: As row 68 (without the shaping).
When knitting the next row: Inc 1 sts at left, Inc 1 sts at right.
R91: K184.
Rows 92-112: As row 91 (without the shaping).
When knitting the next row: Inc 1 sts at left, Inc 1 sts at right.
R113: K186.
Rows 114-134: As row 113 (without the shaping).
When knitting the next row: Inc 1 sts at left, Inc 1 sts at right.
R135: K188.
Rows 136-157: As row 135 (without the shaping).
When knitting the next row: Inc 1 sts at left, Inc 1 sts at right.
R158: K190.
Rows 159-179: As row 158 (without the shaping).
When knitting the next row: Inc 1 sts at left, Inc 1 sts at right.
R180: K192.
Rows 181-205: As row 180 (without the shaping).
When knitting the next row: Dec 1 sts at left, Dec 1 sts at right.
R206: K190.
Rows 207-211: As row 206 (without the shaping).
When knitting the next row: Dec 1 sts at left, Dec 1 sts at right.
R212: K188.
Rows 213-217: As row 212 (without the shaping).
When knitting the next row: Dec 1 sts at left, Dec 1 sts at right.
R218: K186.
Rows 219-223: As row 218 (without the shaping).
When knitting the next row: Dec 1 sts at left, Dec 1 sts at right.
R224: K184.
Rows 225-229: As row 224 (without the shaping).
When knitting the next row: Dec 1 sts at left, Dec 1 sts at right.
R230: K182.
Rows 231-235: As row 230 (without the shaping).
When knitting the next row: Dec 1 sts at left, Dec 1 sts at right.

www.knittitude.com
Mid-Length Red Skirt
Standard Knitting Machine Pattern – Tuck Rib
S, M, L, XL Sizes

R236: K180.
Rows 237-241: As row 236 (without the shaping).
When knitting the next row: Dec 1 sts at left, Dec 1 sts at right.
R242: K178.
Rows 243-247: As row 242 (without the shaping).
When knitting the next row: Dec 1 sts at left, Dec 1 sts at right.
R248: K176.
Rows 249-253: As row 248 (without the shaping).
When knitting the next row: Dec 1 sts at left, Dec 1 sts at right.
R254: K174.
Rows 255-258: As row 254 (without the shaping).
When knitting the next row: Dec 1 sts at left, Dec 1 sts at right.
R259: K172.
Rows 260-263: As row 259 (without the shaping).
When knitting the next row: Dec 1 sts at left, Dec 1 sts at right.
R264: K170.
Rows 265-268: As row 264 (without the shaping).
When knitting the next row: Dec 1 sts at left, Dec 1 sts at right.
R269: K168.
Rows 270-273: As row 269 (without the shaping).
When knitting the next row: Dec 1 sts at left, Dec 1 sts at right.
R274: K166.
Rows 275-278: As row 274 (without the shaping).
When knitting the next row: Dec 1 sts at left, Dec 1 sts at right.
R279: K164.
Rows 280-283: As row 279 (without the shaping).
When knitting the next row: Dec 1 sts at left, Dec 1 sts at right.
R284: K162.
Rows 285-288: As row 284 (without the shaping).
When knitting the next row: Dec 1 sts at left, Dec 1 sts at right.
R289: K160.
Rows 290-293: As row 289 (without the shaping).
When knitting the next row: Dec 1 sts at left, Dec 1 sts at right.
R294: K158.
Rows 295-298: As row 294 (without the shaping).
When knitting the next row: Dec 1 sts at left, Dec 1 sts at right.
R299: K156.
Rows 300-303: As row 299 (without the shaping).
Cast off remainder. End of piece.

Waistband: Knit 52 rows of Double Rib. See **Waistband Instructions** at the end of the document.

Waistband Instructions

Set the main carriage to Stockinet. Set Stitch Dial to 10. Knit 1 row. Set Stitch Dial back to 4. Knit the rest of the indicated number of rows for the waistband (see your size instructions).

Transfer all the stitches from the ribber to the corresponding needles on the main bed. Now, on the main bed, you will have 2 stitches on each needle.

If you have a garter bar, turn the knitting, if not, knit 1 row with the ravel cord, knit like 10 rows with waste yarn, take the garment off the

www.knittitude.com
Mid-Length Red Skirt
Standard Knitting Machine Pattern – Tuck Rib
S, M, L, XL Sizes

machine, turn it and put back the needles on the main bed.

Put the stitches of the row knitted with Stitch Dial 10 (the first row of the waistband) on the corresponding needles like in the photo below. Make sure the 2 stitches of the last row are behind the latches and the stitches of the row knitted with stitch dial 10 inside the hooks. After, push the needles as back as possible slowly and gradually so the stitches from the hooks to be pulled through the 2 stitches that are behind the latches.



Knit 1 row and bind off using your favourite method, mine is loop through loop bind off, that is why this row I knitted with Stitch Dial 10.

Knit 2 identical panels, sew the skirt together using the Mattress Stitch Seam method - make sure you put the elastic inside the waistband before finishing the seaming ☺. Steam the skirt using a garment steamer.

The End.

If you have any questions, feel free to contact me at info@knittitude.com.

If you desire to write a review for this pattern, please do so at this page:

<http://knittitude.com/mid-length-red-skirt-machine-knitting-pattern/>

www.knittitude.com
Mid-Length Red Skirt
Standard Knitting Machine Pattern – Tuck Rib
S, M, L, XL Sizes

Thank you for download,

Happy Knitting,

Nicoleta Ganea

<http://knittitude.com>