

Contact:  
Product Referral  
1-800-652-6013

## Product Safety Summary

---

### SUBSTANCE NAME

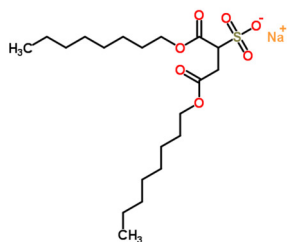
Docusate sodium salt  
Sulfosuccinate ester  
butanedioic acid, 2-sulfo-, 1,4-dioctyl ester, sodium salt (1:1)  
Dioctyl sulfosuccinate, sodium salt  
Sodium 1,4-bis(octyloxy)-1,4-dioxobutane-2-sulfonate  
1,4-Bis(n-octyl) sulfobutanedioate, sodium salt

### GENERAL STATEMENT

Docusate sodium is used to make polymer antioxidants and is not sold directly to the consumer market.

### CHEMICAL IDENTITY

<b>EC Name:</b>	docusate sodium
<b>EC-No. :</b>	209-406-4
<b>CAS-No. :</b>	577-11-7
<b>REACH Registration No.:</b>	not applicable
<b>IUPAC name:</b>	sodium butanedioic acid, 2-sulfo-, 1,4-dioctyl ester, sodium salt (1:1)
<b>Molecular formula:</b>	$C_{20}H_{37}NaO_7S$
<b>Structural formula:</b>	



### USES AND APPLICATIONS

Docusate sodium is a surfactant used in coatings, hydraulic and metal working fluids, lubricants, polishes and waxes, and cosmetics.

### PHYSICAL CHEMICAL PROPERTIES

Docusate sodium is a waxy solid with an odor of octyl alcohol. The physical/chemical properties for Docusate sodium are:

**Melting point** 153 - 157 °C



Contact:  
Product Referral  
1-800-652-6013

## Product Safety Summary

---

**Boiling point/boiling range:** Not applicable  
**Vapor pressure:** Not applicable  
**Molecular Weight:** 444.6 Da  
**Specific gravity:** 1.1 g/cm<sup>3</sup> at 20 °C  
**Flash point:** not applicable  
**Flammability:** not applicable  
**LogPow:** 3.95 (estimated)  
**Viscosity, kinematic:** not applicable  
**Viscosity, dynamic:** not applicable

### HEALTH EFFECTS

Docusate sodium may cause serious eye damage and skin irritation.

EFFECT ASSESSMENT	RESULT
Acute Toxicity (oral/dermal/inhalation)	DOCUSATE sodium does not cause acute toxicity.
Irritation/Corrosivity (skin/eye/respiratory tract)	DOCUSATE sodium causes skin irritation and severe eye damage.
Sensitization (skin/respiratory tract)	DOCUSATE sodium is not known to be a skin sensitizer.
Repeated Exposure	DOCUSATE sodium caused no significant effects after 6 months of dietary exposure at 870 mg/kg/day.
Mutagenicity	DOCUSATE sodium was not mutagenic in the Ames assay.
Carcinogenicity	DOCUSATE sodium is not known to be carcinogenic.
Reproductive Toxicity	DOCUSATE sodium is not known to cause reproductive toxicity

### ENVIRONMENTAL EFFECTS

DOCUSATE SODIUM is not considered to be persistent, bioaccumulating nor highly toxic to aquatic life.

EFFECT ASSESSMENT	RESULT
Aquatic Toxicity	DOCUSATE sodium is slightly toxic to fish and aquatic organisms (LC50 between 28 and 37 mg/l).

FATE AND BEHAVIOR	RESULT
Biodegradation	DOCUSATE sodium is readily biodegradable.
Bioaccumulation potential	DOCUSATE sodium is not expected to bioaccumulate.
PBT/vPvB conclusion	DOCUSATE sodium is not considered to be persistent, bioaccumulating and toxic (PBT).

### EXPOSURE

#### Human Health



Contact:  
Product Referral  
1-800-652-6013

## Product Safety Summary

---

DOCUSATE sodium is used in industrial and consumer applications. When the recommended risk management measures and operational conditions are observed, substantial worker or consumer exposures are not expected during the manufacture and use of DOCUSATE sodium.

### Environment

DOCUSATE sodium is slightly toxic to fish and aquatic organisms, readily biodegradable, and is not expected to bioaccumulate. No direct release of DOCUSATE sodium to soil is expected during manufacturing or industrial use. If a release does occur it is important to use the risk management recommendations provided.

### RISK MANAGEMENT RECOMMENDATIONS

DOCUSATE sodium is an irritant to eyes and skin, and working with this substance requires the use of appropriate chemical resistant gloves, protective clothing and suitable eye protection if any skin/eye contact is foreseen. Personal protective equipment should consist of the use of respiratory protection in case of insufficient exhaust ventilation or prolonged exposure; wearing eye/face protection such as chemical splash proof goggles or face shield; wearing suitable hand protection such as impermeable gloves and impervious protective clothing. Replace gloves immediately when torn or any change in appearance (dimension, color, flexibility etc) is noticed. Industrial workers should receive task specific training on how to use the protective equipment. Industrial workers should be warned to avoid skin and eye contact, to wash off any skin contamination immediately and to report skin/eye problems that may develop.

Industrial workers should handle DOCUSATE sodium in accordance with good industrial hygiene and safety practices. Food, beverages, and tobacco products should not be carried, stored, or consumed where this material is in use. Before eating, drinking, or smoking, wash face and hands thoroughly with soap and water. The following are first aid measures that should be taken if exposure should occur:

- Ingestion: If swallowed, call a physician immediately. Only induce vomiting at the instruction of a physician. Never give anything by mouth to an unconscious person.
- Skin Contact: Remove contaminated clothing and shoes without delay. Wash immediately with plenty of water. Do not reuse contaminated clothing without laundering. Get medical attention if pain or irritation persists after washing or if signs and symptoms of overexposure appear.
- Eye Contact: Rinse immediately with plenty of water for at least 30 minutes or until the chemical has been removed. Obtain medical advice if there are persistent symptoms.
- Inhalation: Material is not expected to be harmful if inhaled. Remove to fresh air.

For the environment do not allow entry into drains, water courses, or soil. Sweep up spills into containers for disposal. Flush spill area with water. Contain contaminated water. If disposal is necessary, it is recommended that organic materials, especially when classified as hazardous waste, be disposed of by thermal treatment or incineration at approved facilities.

### STATE AGENCY REVIEW

DOCUSATE sodium has been registered under REACH (EC) No. 1907/2006. REACH registration number ?????



**Contact:**  
**Product Referral**  
**1-800-652-6013**

## **Product Safety Summary**

---

DOCUSATE sodium is listed in the following Chemical Inventories: TSCA, EINECS, DSL, AICS, IECSC, ENCS, KECL, PICCS and NZIoC.

### **REGULATORY INFORMATION/CLASSIFICATION AND LABELING**

Classification of the substance according to REGULATION (EC) No 1272/2008:

Skin Corrosion / Irritation Hazard Category 2  
Serious Eye Damage / Eye Irritation Hazard Category 1

Classification according to EU Directives 67/548/EEC or 1999/45/EC  
Xi - Irritant  
R38 - Irritating to skin.  
R41 - Risk of serious damage to eyes.

#### LABEL ELEMENTS



Signal Word  
Danger

Hazard Statements  
H315 - Causes skin irritation.  
H318 - Causes serious eye damage.

### **CONCLUSION**

DOCUSATE sodium is used by workers in the manufacturing setting. Before using DOCUSATE sodium, consult the Material Safety Data Sheet for additional information on safety and handling procedures, and recommended personal protective equipment. Taking these measures into account, the intensity of exposure to DOCUSATE sodium is expected to be low.

### **CONTACT INFORMATION WITHIN COMPANY**

For further information on this substance or product safety summaries in general, please contact:

**Company:** Cytec Industries  
**Address:** 5 Garret Mountain Plaza



Contact:  
Product Referral  
1-800-652-6013

## Product Safety Summary

---

Town/Country Postal code: Woodland Park, NJ 07424 (USA)  
E-mail: [custinfo@cytec.com](mailto:custinfo@cytec.com)  
Worldwide Contact Info: [www.cytec.com](http://www.cytec.com)

### **GLOSSARY**

Acute toxicity	Harmful effect resulting from a single or short term exposure to a substance.
Biodegradation	Decomposition or breakdown of a substance under natural conditions (actions of micro organisms etc).
Bioaccumulation	Progressive accumulation in living organisms of a chemical substance present in the environment.
Carcinogenicity	Substance effects causing cancer.
Chronic toxicity	Harmful effect after repeated exposures or long term exposure to a substance.
Flash point	The lowest temperature at which vapor of the substance may form an ignitable mixture with air.
Genotoxicity	Substance effect that causes damage to genes, including mutagenicity and clastogenicity.
Hydrolyze	Undergo hydrolysis; decompose by reacting with water.
Mutagenicity	Substance effect that cause mutation on genes.
PBT	Persistent, bioaccumulative, toxic chemical.
Persistence	Refers to the length of time a compound stays in the environment, once introduced.
Reprotoxicity	Including teratogenicity, embryotoxicity and harmful effects on fertility.
Sensitizing	Allergenic.
Sediment	Topsoil, sand and minerals washed from land into water forming in the end a layer at the bottom of rivers and sea.
Vapor pressure	A measure of a substance's property to evaporate.
vPvB	Very persistent, very bioaccumulative.

### **DATE OF ISSUE**

December 2012

### **REVISION**

Version 1.0



Contact:  
Product Referral  
1-800-652-6013

## Product Safety Summary

---

### **ADDITIONAL INFORMATION**

Further information can be found in the SDS and the disseminated REACH registration Dossier.

### **DISCLAIMER**

The information contained in this paper is intended as advice only and whilst the information is provided in utmost good faith and has been based on the best information currently available, is to be relied upon at the user's own risk. No representations or warranties are made with regards to its completeness or accuracy and no liability will be accepted by Cytec Industries for damages of any nature whatsoever resulting from the use of or reliance on the information.