

# FOR LEASE

## HOLDEN HILL

666 North East Road



### HIGH PROFILE SHOWROOM OF 293 SQM

- Significant main road exposure
- Air conditioned throughout
- Roller door access
- Ample on site parking
- Significant passing traffic
- Rent: \$39,500 pa+ o/gs + GST

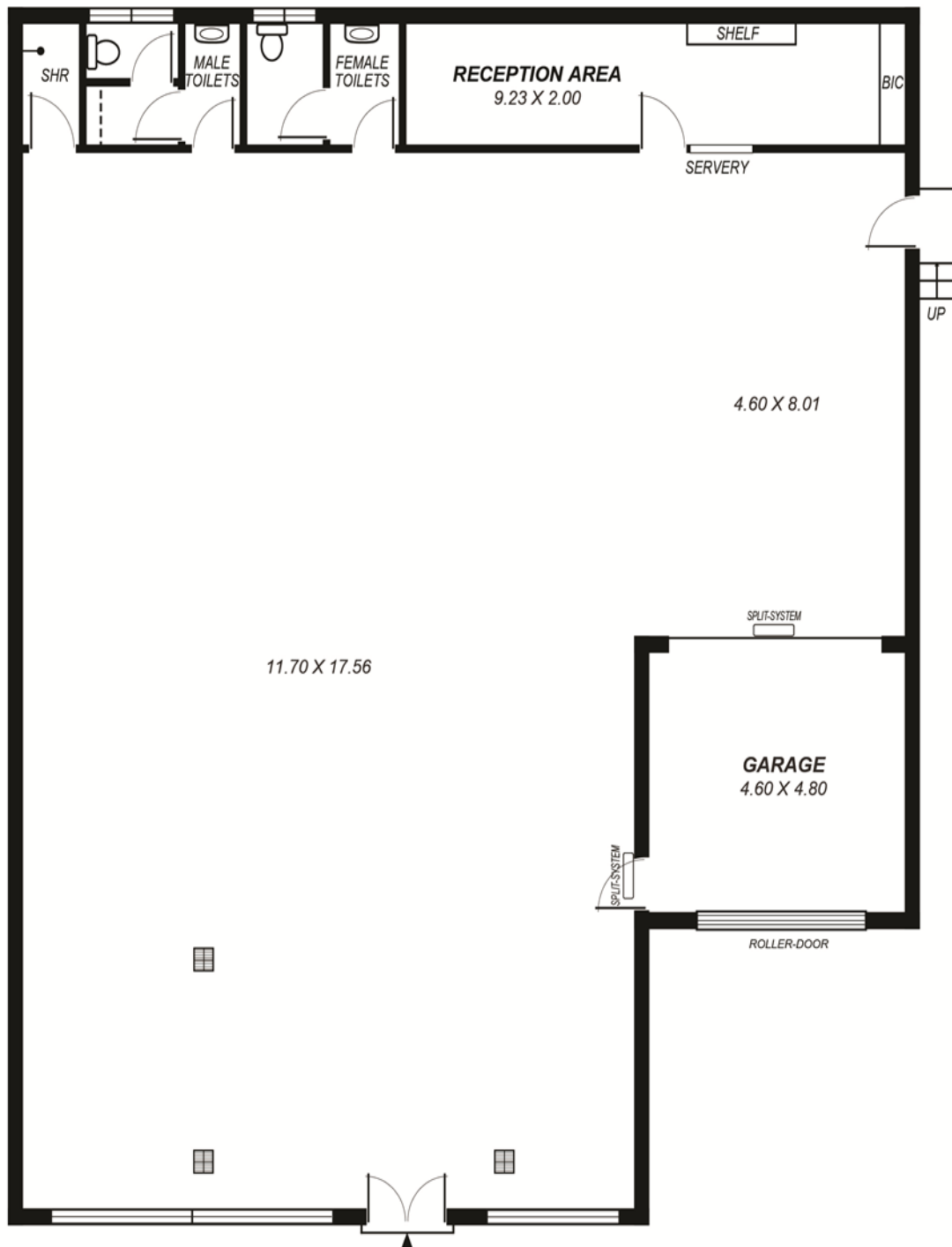
For more information or to arrange an inspection contact:

**Sharna Cavanagh on 0416 083 449 or  
Nic Jordan on 0416 217 219**

**RV Jordan**  
PROPERTY

RV Jordan Pty Ltd  
217 East Terrace Adelaide SA 5000  
PO Box 7169, Hutt Street Adelaide SA 5000  
Telephone 08 8223 2366 Facsimile 08 8232 0024  
info@rvjordan.com.au www.rvjordan.com.au  
RLA 510

## 666 North East Road Holden Hill SA 5088



### RATES & TAXES (Ex. GST)

Council Rates	\$2,860.00 pa
SA Water Rates	\$ 900.00 pa
ESL	\$ 672.00 pa
Building Insurance	\$2,308.00 pa
<b>Total</b>	<b>\$6,740.00 pa</b>

PLEASE NOTE: EVERY CARE HAS BEEN TAKEN TO VERIFY THE CORRECTNESS OF AREAS AND DETAILS USED IN THIS LEAFLET. HOWEVER, NO WARRANTY OR REPRESENTATION IS GIVEN OR MADE AS TO THE CORRECTNESS OF THE INFORMATION SUPPLIED AND NEITHER THE OWNERS NOR THEIR AGENT CAN ACCEPT RESPONSIBILITY FOR ERRORS OR OMISSIONS.