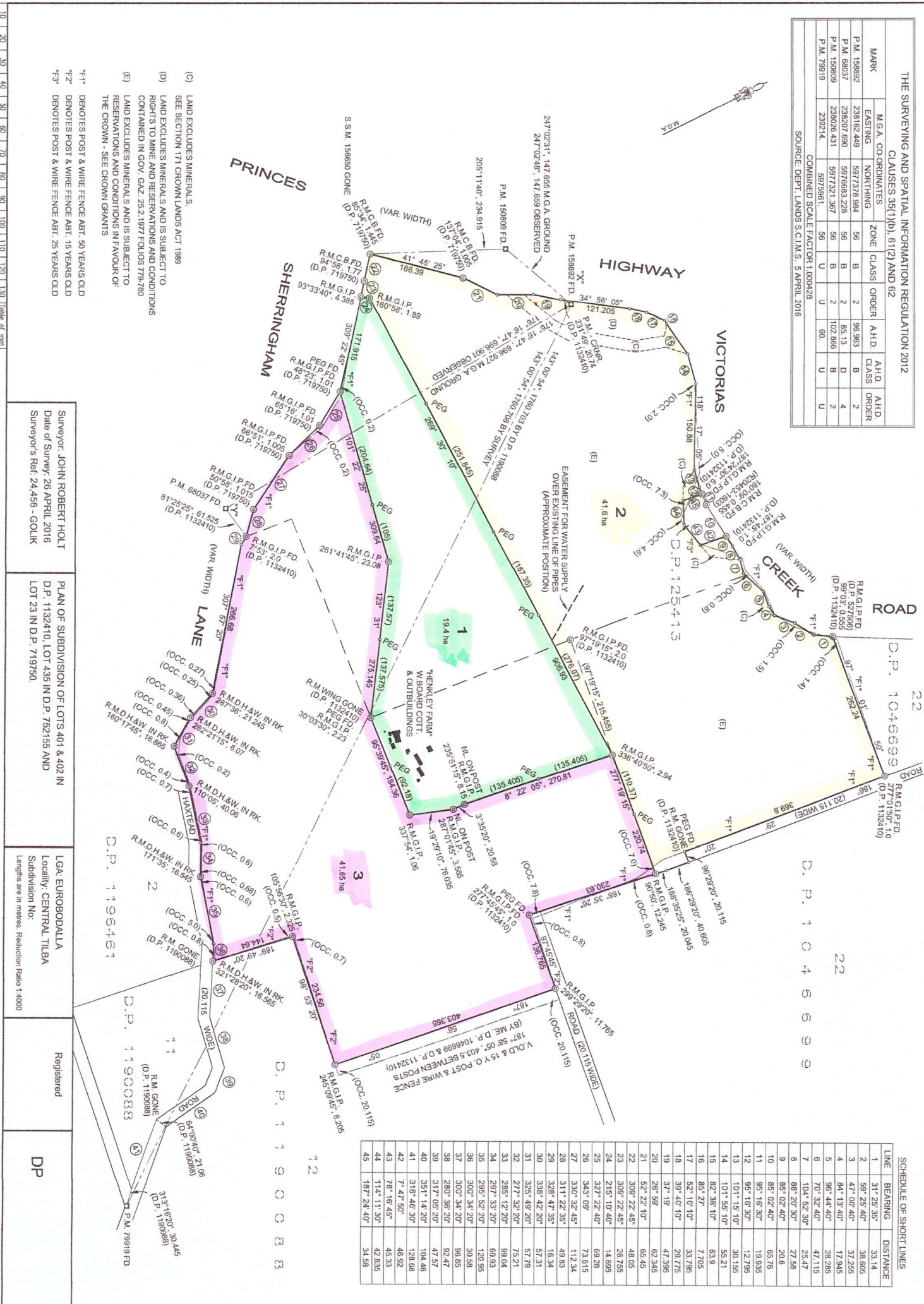


THE SURVEYING AND SPATIAL INFORMATION REGULATION 2012
CLAUSES 35(1)(b), 61(2) AND 62

MARK	M.G.A. CO-ORDINATES	ZONE	CLASS	ORDER	A.H.D.	A.I.D.	A.H.D.
	EASTING	NORTHING					
P.M. 159882	236162.649	597378.984	56	B	2	96.983	B
P.M. 69037	236207.690	5976683.228	56	B	2	85.13	D
P.M. 159809	236026.431	5977221.367	56	U	2	102.866	B
P.M. 79919	239214.	5975961.	56	U	2	80	U

COMBINED SCALE FACTOR 1.000428
SOURCE: DEPT. LANDS S.I.M.S. 5 APRIL 2016



SCHEDULE OF SHORT LINES

LINE	BEARING	DISTANCE
1	31° 25' 35"	33.14
2	59° 25' 40"	38.605
3	47° 00' 40"	37.255
4	84° 13' 40"	17.965
5	96° 44' 40"	28.285
6	70° 32' 40"	47.115
7	104° 52' 30"	25.47
8	88° 20' 30"	27.58
9	85° 02' 40"	20.6
10	85° 02' 40"	65.76
11	95° 16' 30"	19.935
12	99° 18' 30"	12.795
13	101° 55' 10"	30.155
14	101° 55' 10"	55.21
15	82° 38' 10"	63.9
16	85° 27'	7.705
17	52° 10' 10"	33.795
18	39° 40' 10"	29.775
19	37° 19'	47.395
20	28° 59'	62.345
21	52° 22' 10"	65.45
22	309° 22' 45"	48.05
23	309° 22' 45"	26.755
24	215° 10' 40"	14.695
25	327° 22' 40"	69.28
26	343° 09'	73.615
27	330° 32' 45"	112.34
28	311° 22' 35"	16.34
29	328° 47' 35"	57.31
30	338° 42' 20"	57.31
31	325° 48' 20"	57.79
32	277° 32' 20"	75.21
33	285° 12' 20"	99.04
34	297° 33' 20"	60.93
35	295° 52' 20"	120.95
36	300° 34' 20"	30.59
37	300° 34' 20"	96.55
38	280° 30' 20"	92.47
39	317° 05' 20"	47.57
40	351° 14' 20"	104.48
41	316° 46' 30"	128.88
42	7° 47' 50"	46.92
43	78° 16' 45"	45.33
44	114° 11' 30"	42.535
45	187° 24' 40"	34.58

10 20 30 40 50 60 70 80 90 100 110 120 130 (Scale of mm)

Surveyor: JOHN ROBERT HOLT
Date of Survey: 26 APRIL 2016
Surveyor's Ref: 24,456 - GOLIK

PLAN OF SUBDIVISION OF LOTS 401 & 402 IN
D.P. 1132410, LOT 435 IN D.P. 752155 AND
LOT 23 IN D.P. 719750

LGA: EUROBDALLA
Locality: CENTRAL TILBA
Subdivision No:
Lengths are in metres. Reduction Ratio 1:4000

Registered
DP

- (c) LAND EXCLUDES MINERALS.
SEE SECTION 171 CROWN LANDS ACT 1989
 - (d) LAND EXCLUDES MINERALS AND IS SUBJECT TO RIGHTS TO MINE AND RESERVATIONS AND CONDITIONS CONTAINED IN GOV. GAZ. 25.2.1977 FOLIOS 775-780
 - (e) LAND EXCLUDES MINERALS AND IS SUBJECT TO RESERVATIONS AND CONDITIONS IN FAVOUR OF THE CROWN - SEE CROWN GRANTS
- *F1 DENOTES POST & WIRE FENCE ABT. 50 YEARS OLD
*F2 DENOTES POST & WIRE FENCE ABT. 15 YEARS OLD
*F3 DENOTES POST & WIRE FENCE ABT. 25 YEARS OLD