

D. P. 8 1 2 9 7 7

D. P. 8 1 2 9 7 7


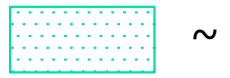




D. P. 8 1 2 9 7 7

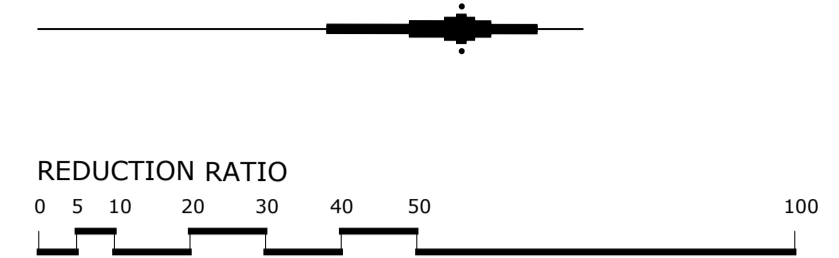
1

2

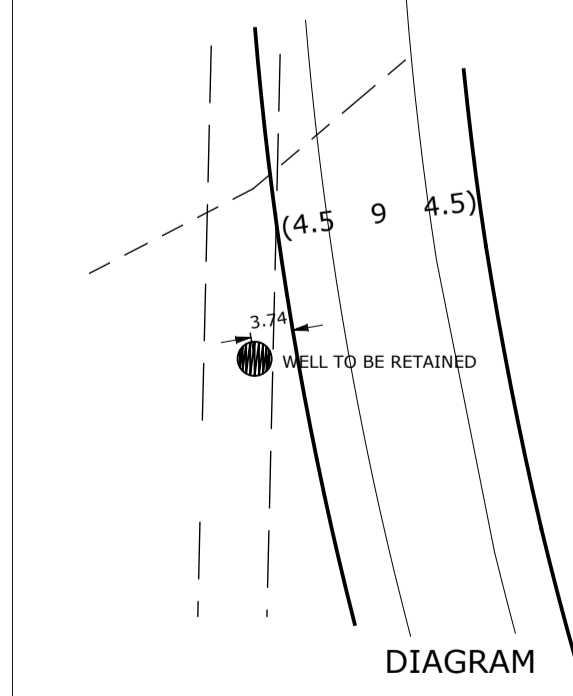
3

4

-  ~ STAGE 3
-  ~ STAGE 4
-  ~ STAGE 5
-  ~ STAGE 6
-  ~ STAGE 7
-  ~ STAGE 8



Line	Arc	Radius
1	20.51	50
2	3.1	50
3	2.92	50
4	20.7	50
5	24.36	50
6	9.25	6
7	33.92	22
8	1.98	300
9	112.81	318
10	17.5	300
11	17.53	300
12	16.17	300
13	35.06	300
14	7.74	12.5
15	4	12.5
16	6.94	12.5
17	8.76	12.5
18	10.1	15
19	9.53	12.5
20	16.12	10
21	10.1	15
22	10.1	15
23	8.94	15
24	7.5	12.5
25	1.15	15
26	4	12.5
27	6.23	15
28	15	12.5
29	5.11	15
30	7.5	12.5
31	8.7	15
32	4	12.5
33	14.59	12.5
34	14.1	12.5
35	4	12.5
36	13.83	12.5
37	4	12.5
38	7.9	12.5
39	4	12.5
40	11.66	12.5



27 D. P. 2 6 2 2 0

ALL DIMENSIONS ARE APPROXIMATE AND SUBJECT TO SURVEY

REDUCTION RATIO 1 : 1000	SURVEYED	AMENDMENTS	BY	DATE
DATUM : A.H.D.	DESIGNED G.B.			
CONTOUR INTERVAL :	DRAWN C.C.			
ORIGIN : S.S.M.	CHECKED G.B.			
: R.L.				
DATE OF PLAN : 12.04.2017	A1			

RYGATE & WEST
 (ULLADULLA) ABN 21 643 068 850
 CONSULTING SURVEYORS, PLANNERS,
 ROAD & DRAINAGE ENGINEERS
 P.O. BOX 107, ULLADULLA N.S.W. 2539 DX 5634
 266 GREEN STREET PH 02 44542137 FAX 02 44552916
 mail@rygateandwest.com.au

**ASHLEIGH DEVELOPMENTS
 PTY. LIMITED**

PLAN
 OF PROPOSED S96 MODIFICATION OF S/F 9634
 MILTON CITY OF SHOALHAVEN

REF. No. U12814_STAGE4-8
 DRAWING No U12814_ST4-8_S96.DWG
 ISSUE **A**
 SHEET **1** OF **1** SHEETS