

# ‘Miranui’

*Luxurious Living within Glorious Garden Paradise*

7 MARTHA STREET, BOWRAL



*Unlocking Possibilities*

**DUNNE**  
SOUTHERN HIGHLANDS



# ‘Miranui’

## BOWRAL

---

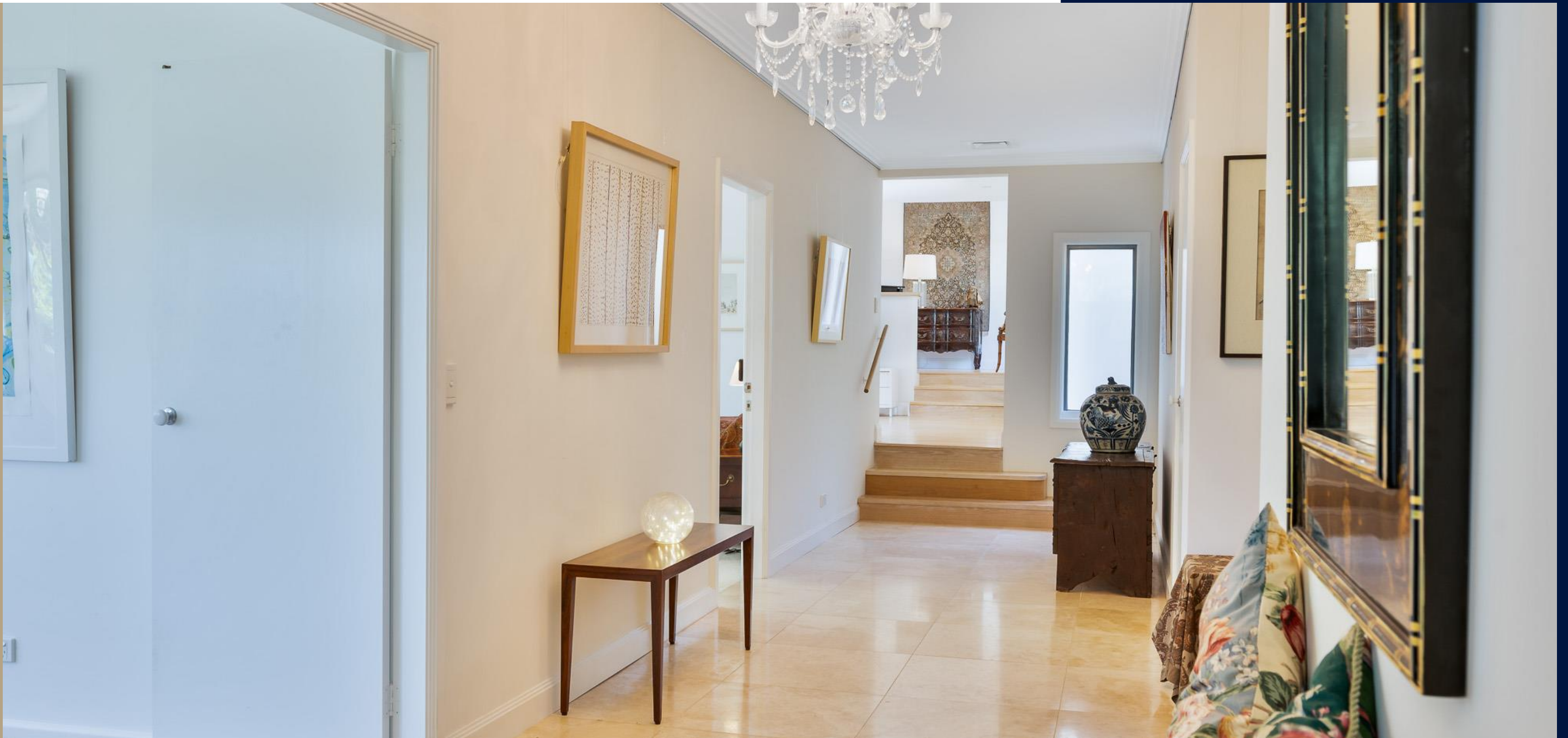
Private retreat only a short stroll to the centre of town, schools & quality medical services; offering spacious & luxurious accommodation in the main house plus a separate fully self-contained cottage ideal for guests or extended family. Set on three quarters of an acre looking north across glorious, landscaped gardens capturing Bowral’s iconic Oxley Hill view from all living rooms.

*Multiple living rooms both indoors and outdoors*



Architect designed split level home with high ceilings, good flow with living areas separate from bedrooms.

*Wide hallway with large cloakroom at entry*



Cloakroom at main entrance opening onto gallery; built-in professional art hanging systems in the living rooms & bedrooms.



Quality fittings finishes throughout the home & year-round comfort with air conditioning & zoned gas central heating.

*Luxury hand-made kitchen with marble bench tops and Philip Stark lighting*



Well-appointed & open plan cook's kitchen with quality European appliances.

*Views from all living rooms and master bedroom*



Four spacious bedrooms in the main house, master with walk-in robe & ensuite.

## *Multi-use fully independent cottage*



Separate fully renovated & self-contained guest cottage, with stand-alone metered services, light filled bedroom, vast large living area with full kitchen, bathroom & laundry: suitable for guests, extended family members or for the generation of additional income (80m2 approx.)

Perfect northerly aspect; all main rooms enjoying winter warmth & bright light

*Miranui means beautiful home...*



*Properties like Miranui are rarely available.*

Land size : 2,749 m<sup>2</sup>  
Area size : 362 m<sup>2</sup>  
Water Rates : \$1,176 pa  
Council Rates : \$4,072 pa



**7 MARTHA STREET, BOWRAL**

Floor plan measurements are approximate and are for illustration purposes only.  
Floor plan by Highlands Photography [highlandsp photography.com.au](http://highlandsp photography.com.au)  
Whilst all reasonable care has been taken in providing this information related companies and their representatives, consultants and agents accept no responsibility for the accuracy of any information contained herein or for any action taken in reliance thereon by any third party whether purchaser, potential purchaser or otherwise.

Floor plan measurements are approximate and are for illustration purposes only.  
Floor plan by Highlands Photography: [highlandsphotography.com.au](http://highlandsphotography.com.au)  
Whilst all reasonable care has been taken in providing this information related companies and their representatives, consultants and agents accept no responsibility for the accuracy of any information contained herein or for any action taken in reliance thereon by any third party whether purchaser, potential purchaser or otherwise.



*For Sale by Expressions of Interest*



*Contact Sandie Dunne 0414 243 352  
or Karl Zabel 0432 410 275  
to arrange inspection.*

[www.dunnerealestate.com.au](http://www.dunnerealestate.com.au)

[info@dunnerealestate.com.au](mailto:info@dunnerealestate.com.au)

**D**UNNE  
SOUTHERN HIGHLANDS  
*Unlocking Possibilities*

## *Dunne Southern Highlands*

