

## L2 Wide Bay Highway, Goomeri Access via Taylors Road, Goomeri

### Information Memorandum



## Property Description

Lifestyle or Livestock - your choice

Here is 63.73ha of good warm grazing country. There are good heavy black soil gullies and flat, running back to moderately timbered ridges. The timber is mainly narrow leaf and silver leaf iron bark. It is watered by one dam, and there is one equipped bore (440 gallons per hours). There is a solar pump and 5000gal tank with trough. The fencing is stockproof. Property can run approximately 20 breeders. Make this block either your lifestyle paradise or an extra paddock for your existing enterprise. Great location, close to Goomeri, wineries, and the Bjelke Petersen Dam and only an hour and half from the Sunshine Coast.

**Listing Price: \$480,000**

# L2 RP22767

## Wide Bay Highway, Goomeri

26°10'59"S 152°5'58"E

26°10'59"S 152°7'36"E



26°12'26"S 152°5'58"E

26°12'26"S 152°7'36"E

A product of



Legend located on next page



Scale: 1:15281

Printed at: A4

Print date: 19/6/2023

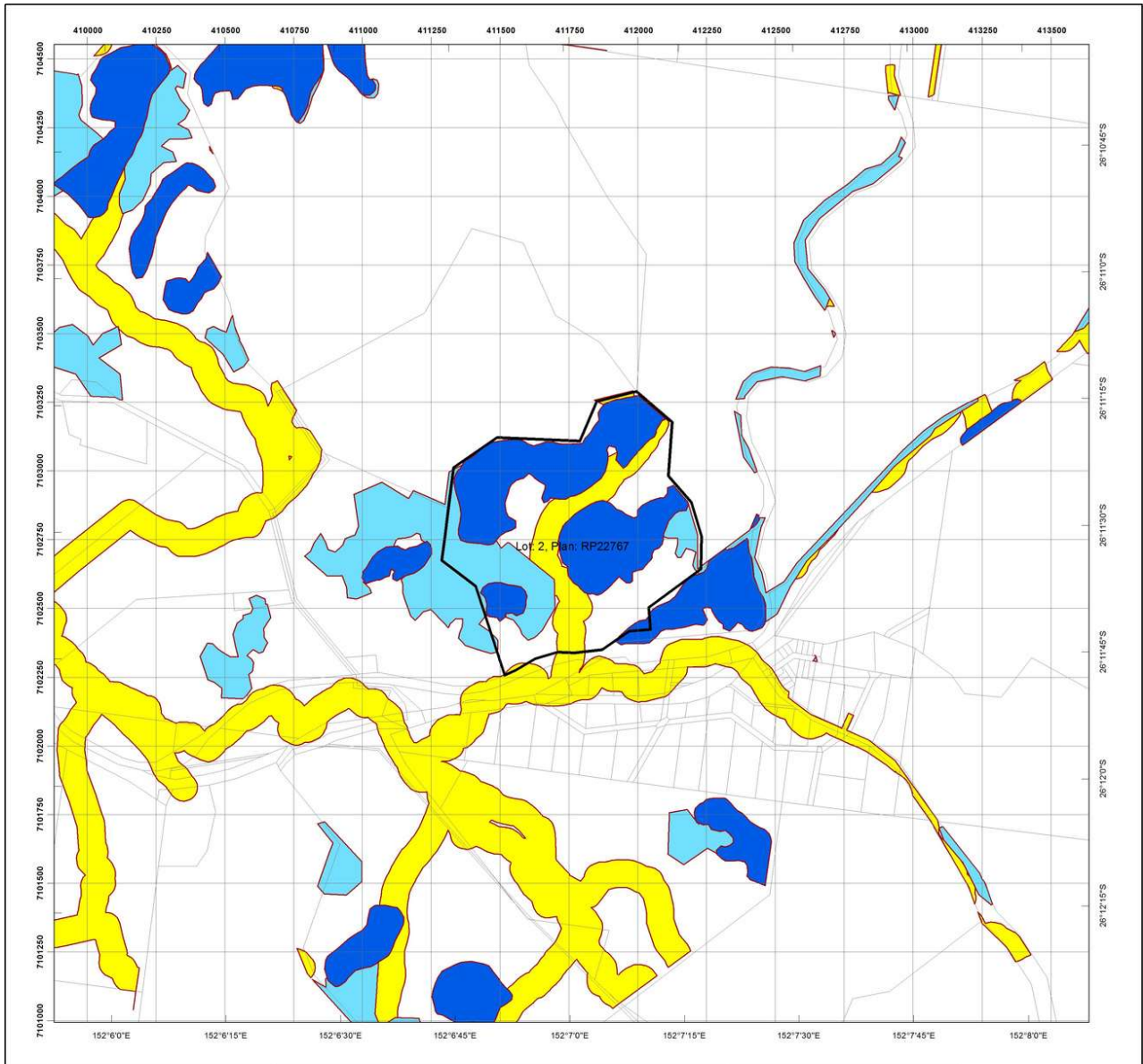
Not suitable for accurate measurement.  
Projection: Web Mercator EPSG 102100 (3857)

For more information, visit  
<https://qldglobe.information.qld.gov.au/help-info/Contact-us.html>

Includes material © State of Queensland 2023. You are responsible for ensuring that the map is suitable for your purposes. The State of Queensland makes no representation or warranties in relation to the map contents and disclaims all liability.

If imagery is displayed, imagery includes material © CNES reproduced under license from Airbus DS, all rights reserved © 21AT © Earth-i, all rights reserved, © Planet Labs PBC, 2023

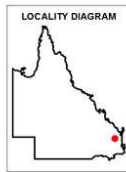




## Regulated Vegetation Management Map

### Legend

- Selected Lot and Plan
- Category A area (Vegetation offsets/compliance notices/VDecs)
- Category B area (Remnant vegetation)
- Category C area (High-value regrowth vegetation)
- Category R area (Reef regrowth watercourse vegetation)
- Category X area (Exempt clearing work on Freehold, Indigenous and Leasehold land)
- Water
- Other land parcel boundaries



This product is projected into:  
 GDA 1994 MGA Zone 56

**Disclaimer:**  
 While every care is taken to ensure the accuracy of this product, the Department of Resources makes no representations or warranties about its accuracy, reliability, completeness or suitability for any particular purpose and disclaims all responsibility and all liability (including without limitation, liability in negligence) for all expenses, losses, damages (including indirect or consequential damage) and costs which you might incur as a result of the product being inaccurate or incomplete in any way and for any reason.

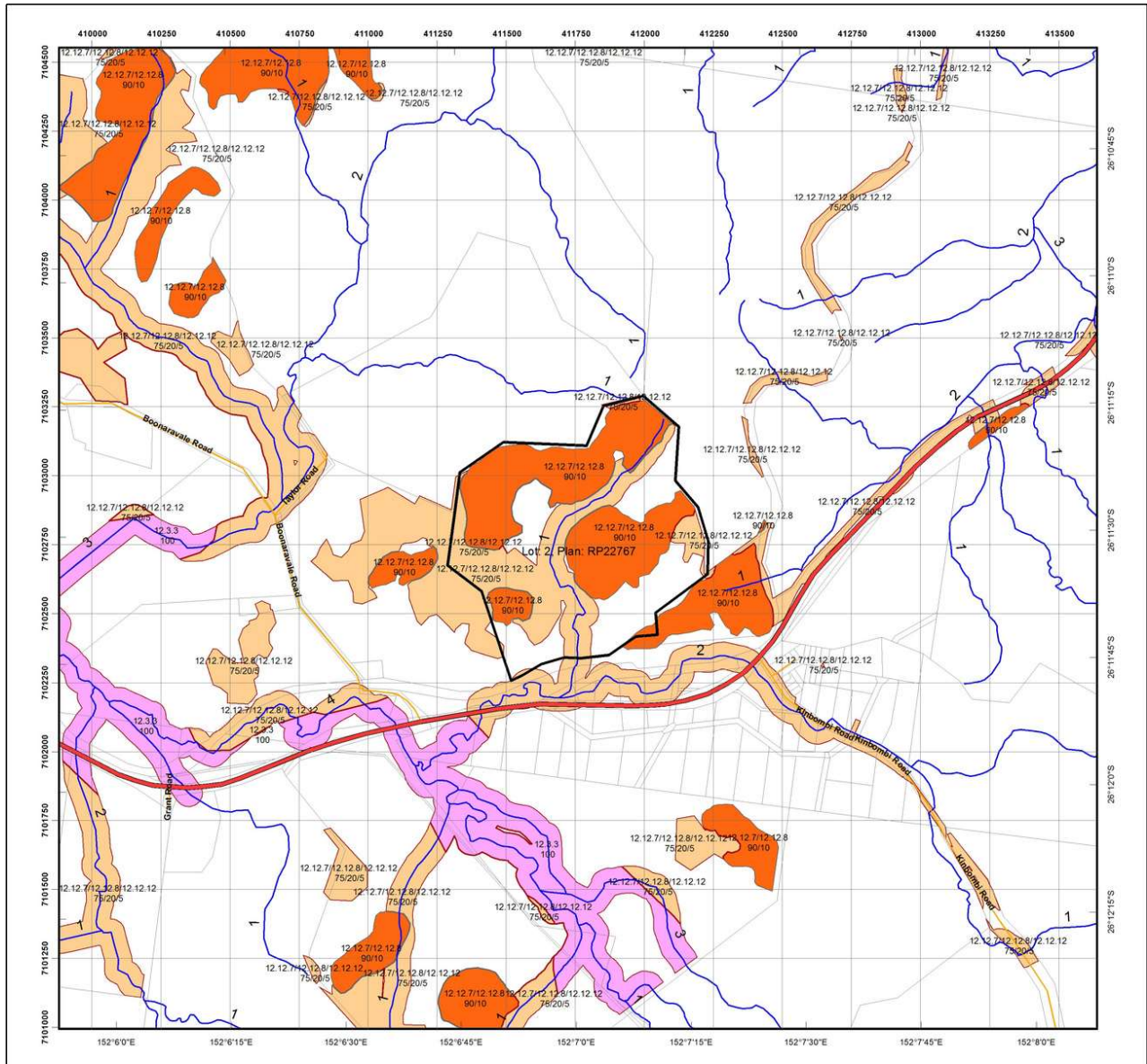
Additional information required for the assessment of vegetation values is provided in the accompanying "Vegetation Management Supporting map". For further information go to the web site: [www.resources.qld.gov.au](http://www.resources.qld.gov.au) or contact the Department of Resources.

Digital data for the regulated vegetation management map is available from the Queensland Spatial Portal at <http://www.information.qld.gov.au/>

Land parcel boundaries are provided as locational aid only.

This map is updated on a monthly basis to ensure new PMAVs are included as they are approved.

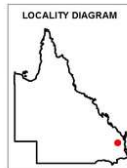




## Vegetation Management Supporting Map

### Legend

- Selected Lot and Plan
- Category A or B area containing endangered regional ecosystems
- Category A or B area containing of concern regional ecosystems
- Category A or B area that is a least concern regional ecosystem
- Category C or R area containing endangered regional ecosystems
- Category C or R area containing of concern regional ecosystems
- Category C or R area that is a least concern regional ecosystem
- Category X area
- Water
- Wetland on the vegetation management wetlands map
- Essential habitat on the essential habitat map
- Essential habitat species record
- ~ Watercourses and drainage features on the vegetation management watercourse and drainage features map (Stream order shown as black number against stream where available)
- Highway
- Connector
- Street/Local Road
- National Parks, State Forest and other reserves
- Other land parcel boundaries



0 140 280 420 560 700 m

This product is projected into:  
 GDA 1994 MGA Zone 56

Labels for Essential Habitat are centred on the area of enquiry.

Regional ecosystem linework has been compiled at a scale of 1:100 000, except in designated areas where a compilation scale of 1:50 000 is available. Linework should be used as a guide only. The positional accuracy of RE data mapped at a scale of 1:100 000 is +/- 100 metres.

**Disclaimer:**  
 While every care is taken to ensure the accuracy of this product, the Department of Resources makes no representations or warranties about its accuracy, reliability, completeness or suitability for any particular purpose and disclaims all responsibility and all liability (including without limitation, liability in negligence) for all expenses, losses, damages (including indirect or consequential damage) and costs which you might incur as a result of the product being inaccurate or incomplete in any way and for any reason.

Additional information may be required for the purposes of land clearing or assessment of a regional ecosystem map or PMAV applications. For further information go to the web site: [www.resources.qld.gov.au](http://www.resources.qld.gov.au) or contact the Department of Resources.

Digital data for the vegetation management watercourse and drainage feature map, vegetation management wetlands map, essential habitat map and the vegetation management remnant and regional ecosystem map are available from the Queensland Spatial Portal at <http://www.information.qld.gov.au/>

Land parcel boundaries are provided as locational aid only.



**LISTING AGENT**



**Chris Crouch**

**0429 656 162**

