



24 TENSING STREET, LIBERTON



POLLY MATENA-SCHAAF
021 904 393
polly@berealestate.co.nz

BE REAL
ESTATE

WARM & DOUBLE GLAZED WITH A NEW ROOF!

🏠 4 🚿 2 🚗 1 🏡 180 m² 📏 976 m²

Perched proudly in sought-after Liberton, this elevated home has panoramic views across the hills and captures every drop of sunshine throughout the day. Warm, welcoming, and wonderfully versatile, it's a property that offers more than meets the eye.

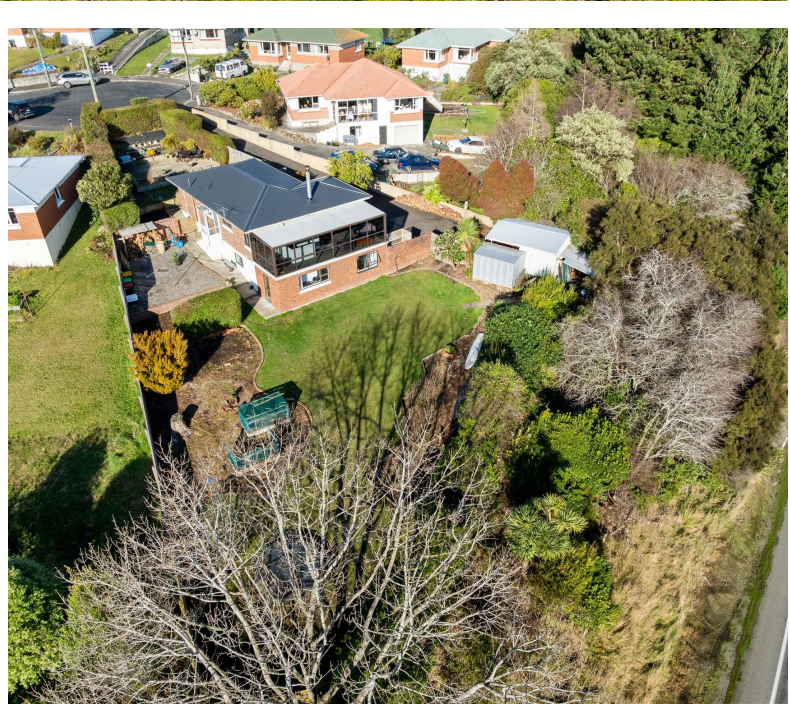
Upstairs, you'll find three double bedrooms, a tidy family bathroom, and a separate toilet. The living room is a cosy retreat with a log burner (complete with wetback), while the modern kitchen flows effortlessly into the living room or the sun-soaked conservatory — the perfect spot for a morning coffee or evening unwind. High-quality double glazing throughout and a brand-new roof (only six months old) complete the picture of long-term comfort.

Internal stairs lead to a smartly configured lower level — ideal for growing families, guests, or teens needing their own space. There's a compact but comfy fourth bedroom, a utility room that's easily transformed into an office or fifth sleeping space, a second bathroom, laundry nook, and more storage than you'd expect.

Outdoors, the fully fenced section is pet-friendly and low-maintenance, with established planting and a fabulous elevated BBQ area that soaks up the sun and showcases the stunning views. There's off-street parking, a carport, sheds, and excellent local schools and shops just minutes away.







LEGALS

Land Area	976 m
Floor Area	180 m
Tenure	Freehold
Rateable Value	\$570,000
Land Value	\$290,000
Improvements value	\$280,000
Council Zone	Residential1

ENERGY

Heating	Wood Burner
Insulation	Ceiling Insulation and Underfloor
Windows	Double Glazed and 2 Aluminium
Water Heating	Electric - wet back
Ventilation	DVS System

CONSTRUCTION

Year Built	1960s
Exterior	Brick
Roof	Colorsteel

EDUCATION

Early Childhood	Aurora Tamariki
Primary	Liberton Christian School, Pine Hill School
Secondary	Logan Park High School

CHATTELS

Window Treatments, Clothesline, Dishwasher, Electric Oven, Fixed Floor Coverings, Garden Shed (1), Heat Transfer System, Light Fittings, Range Hood, Smoke Detectors (4), TV Brackets, Wood Burner, DVS.

Excluded: Butchers Block (in the kitchen)

Negotiable: Fridge, Washing Machine

This image shows a blank sheet of white paper with horizontal ruling lines. The lines are evenly spaced and extend across the width of the page. There are no margins, text, or other markings on the paper.

BE REAL ESTATE

LEVEL ONE

Utility Room

Utility Room

Laundry

Bathroom

LEVEL TWO

Bedroom

Bedroom

Bedroom

Bedroom

Hallway

Bathroom

Toilet

Kitchen

Living

Sunroom

Carport

This floor plan is not to scale and is for illustrative purposes only.



SCAN QR CODE
FOR MORE
INFORMATION



BE supported every step of the way

At Be Real Estate, we're redefining the real estate experience by delivering exceptional service, building lasting relationships, and achieving life-changing outcomes. Founded on the principles of integrity, innovation, and personalized care, we are committed to guiding our clients through every stage of their property journey with expertise and heart.

Be Real Estate is the vision of Chris Adams and Polly, two dynamic real estate professionals with diverse expertise and a shared passion for delivering outstanding results. Together, they bring a unique blend of skills, local knowledge, and unwavering commitment to serving the Otago community and beyond.

BE
RE

berealestate.co.nz

POWERED BY OWNLY LTD. LICENSED REAA 2008