

PROPOSED DEVELOPMENT

13 CHEVIOT STREET

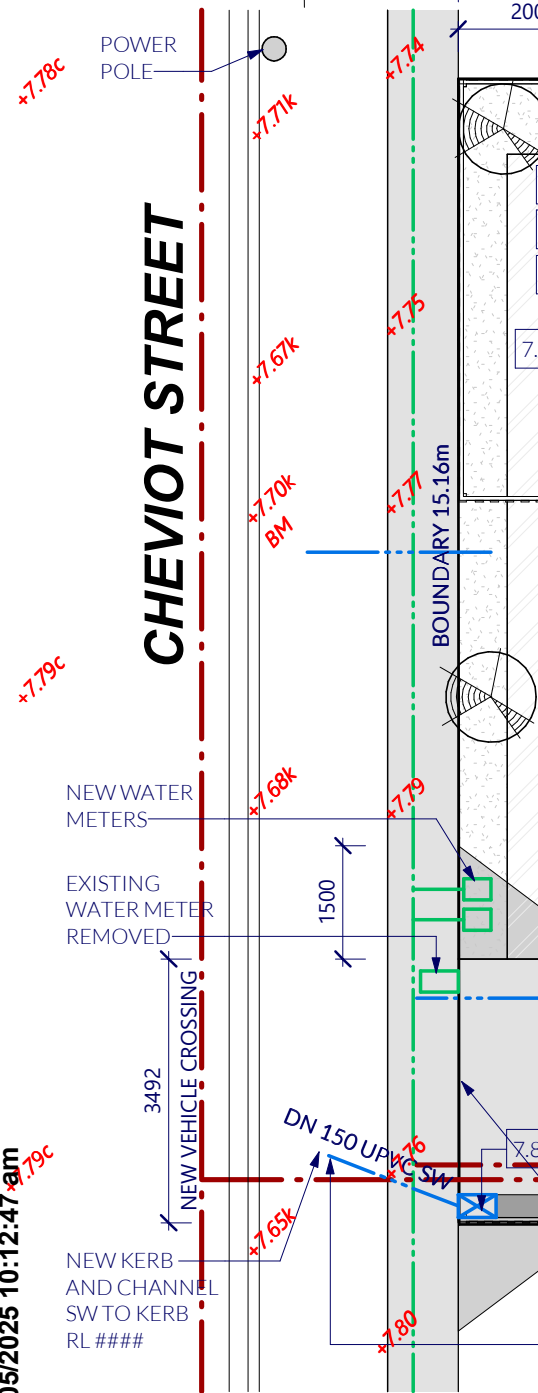


JosephDavid | Architecture

www.josephdavid.co.nz

Ph: 0210635931

e-mail: joe@josephdavid.co.nz



SITE AREA: 490m²

PROPOSED GROSS FLOOR SLAB AREA: 202.3m²

PROPOSED SITE COVERAGE (INCL EAVES) 202.3m²

MAXIMUM SITE COVERAGE: 40%

PROPOSED SITE COVERAGE: 41.2%

MAXIMUM BUILDING HEIGHT: 8m

REQUIRED LANDSCAPING: 20% = 98m²

SOFT PLANTING: 50% LANDSCAPING = 49m²

OUTDOOR LIVING SPACE REQUIRED : 50m²
(30m² WITH RESOURCE CONSENT)
(MIN 4m DIMENSION)

IN A FLOOD MANAGEMENT AREA - NO

IN A LIQUEFACTION MANAGEMENT AREA - YES

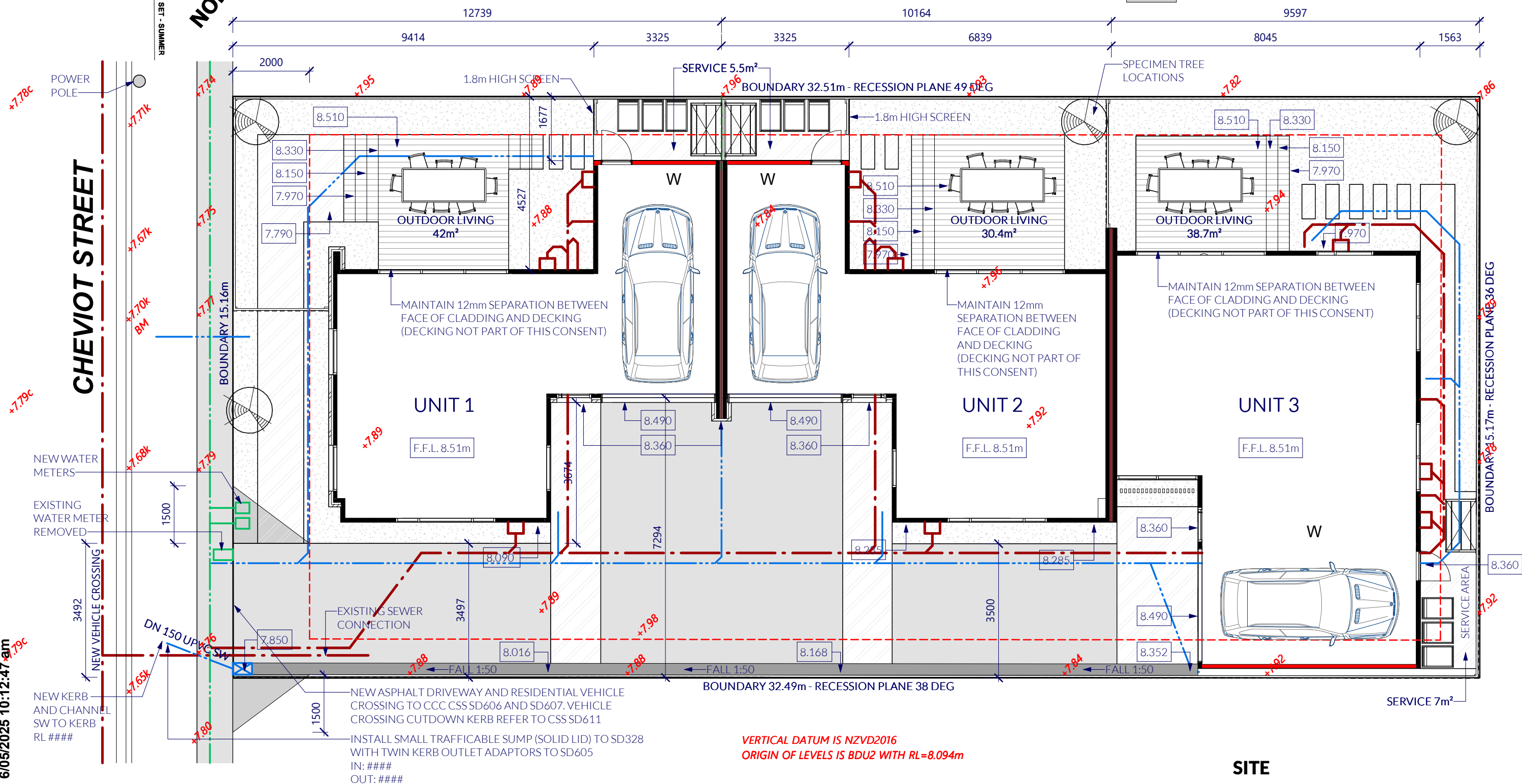
WIND ZONE - LOW

CLIMATE ZONE - 5

EARTHQUAKE ZONE - 2

EXPOSURE ZONE - C

	140 KWILA DECKING (DECKING PROFILE FACE UP) - 34m²
	EXPOSED AGGREGATE CONCRETE - 73.7m²
	SOFT PLANTING / FREE DRAINING - 82.7m²
	CONCRETE DRIVEWAY - 94.3m²



CONTRACTOR SHALL VERIFY ALL DIMENSIONS BEFORE STARTING WORK
DIMENSIONS ARE IN MILLIMETRES UNLESS STATED OTHERWISE

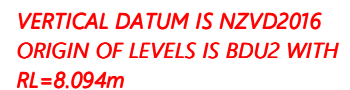
DSN. .
DRN. .
DRN CKD. .
APP. .
DATE 12/23/24

SCALE AT
1 : 100

FILE	DRAWING
19364	1.0
STAGE 2	

www.josephdavid.co.nz Ph: 0210635931 e-mail: joe@josephdavid.co.nz

PROPOSED DEVELOPMENT 13 CHEVIOT STREET



Stabilised Entry/Exit Pad - Building Sites

The diagram illustrates the construction and placement of a stabilised entry/exit pad. Key features and labels include:

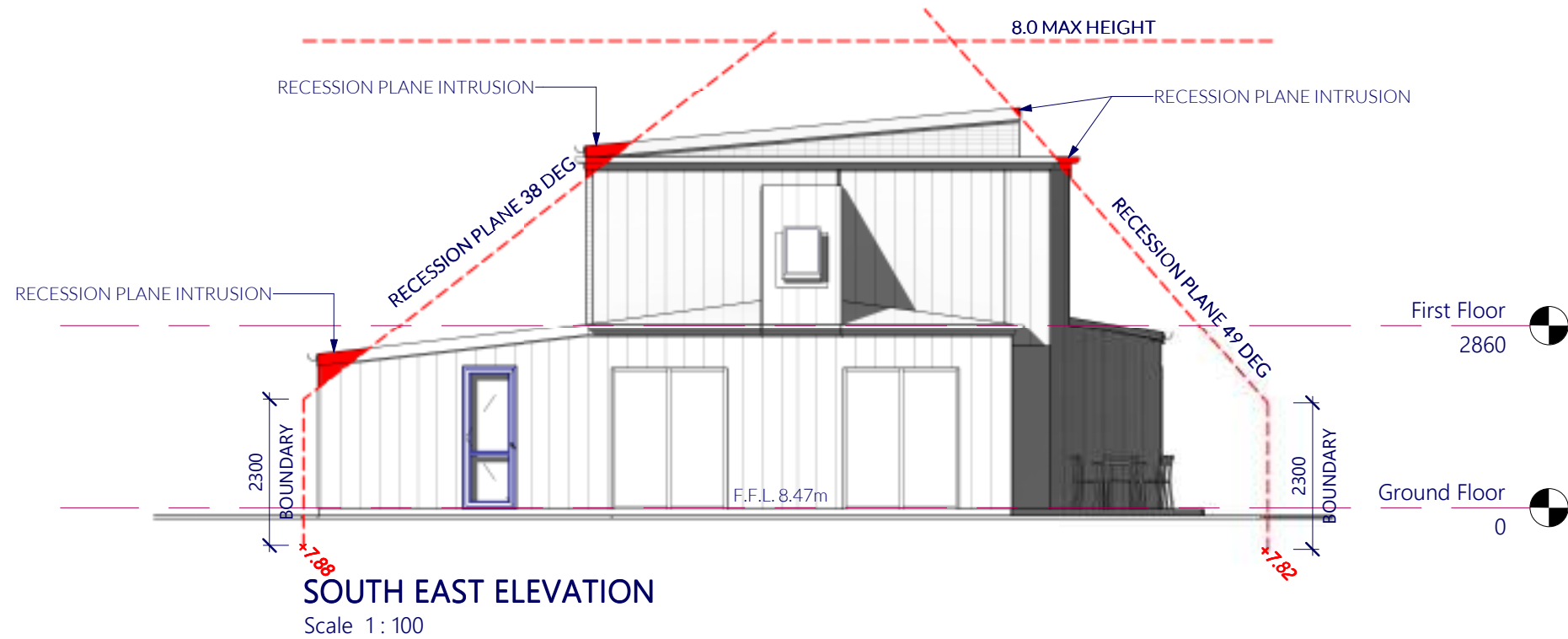
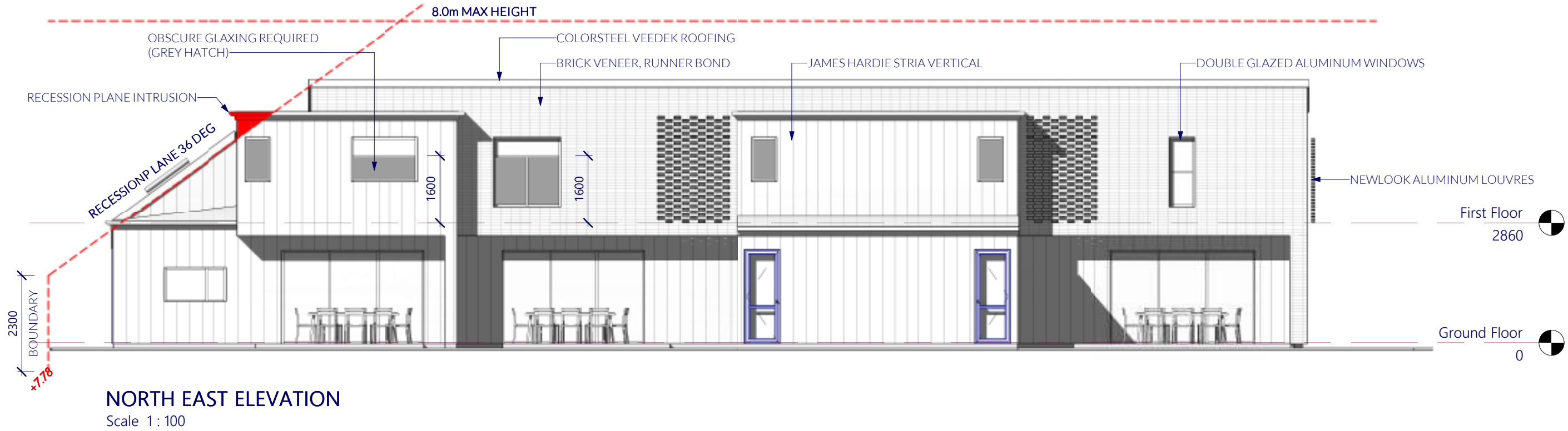
- Entry/exit pad extends from kerb to building slab where practical**
- Minimum length 10 m (min)**
- 200 mm (min)** (thickness of the top layer)
- 150 - 200 mm (min)** (thickness of the base layer)
- Width 2.0 m (min)**
- Runoff diversion bund incorporated into the pad when the entry/exit pad is located down-slope of the soil disturbance**
- Property boundary**
- Footpath**
- Roadway**
- Kerb**
- Make safe for pedestrian traffic**
- 40 - 75 mm crushed rock**
- Geotextile filter cloth (as directed or when working on clayey soils)**
- Runoff from pad directed to sediment trap**

© Catchments & Creeks Pty Ltd

The diagram illustrates the setup of a sediment fence. It shows a cross-section of the ground with a 'Disturbed area' on the left and an 'Undisturbed area' on the right. A 'Sediment fence fabric, not filter cloth or shade cloth' is installed across the boundary. The fabric is supported by vertical 'Support posts' placed at intervals of '2 m (max) without wire backing'. The fabric is secured to the ground with a '200mm' wide base and has a total height of '700mm (max)'. An arrow indicates the 'Direction of flow' from the disturbed area towards the fence. A label points to the top of the fabric, stating 'Sediment fence return to prevent flow bypass'. Another label points to the support posts, stating 'All support posts placed down-slope of fabric'.

The diagram compares two methods of securing a fabric liner to the ground. On the left, the 'With trench' method shows a vertical trench being cut into the soil. The fabric is placed over the trench, and the trench is filled with 'Back fill' to secure the fabric. A dimension line indicates a depth of '200 mm' for the backfill. On the right, the 'Without trench' method shows a 'Post' being driven through the fabric into the 'Soil' below. The fabric is secured by the post, and the area around the post is labeled 'Aggregate'. Both methods show the fabric being secured to the ground surface.

DSN.	SCALE AT A3	FILE	DRAWING
DRN.	1 : 100	19364	1.1
DRN CKD.			
APP.			
DATE 03/16/25		STAGE 2	



ELEVATIONS

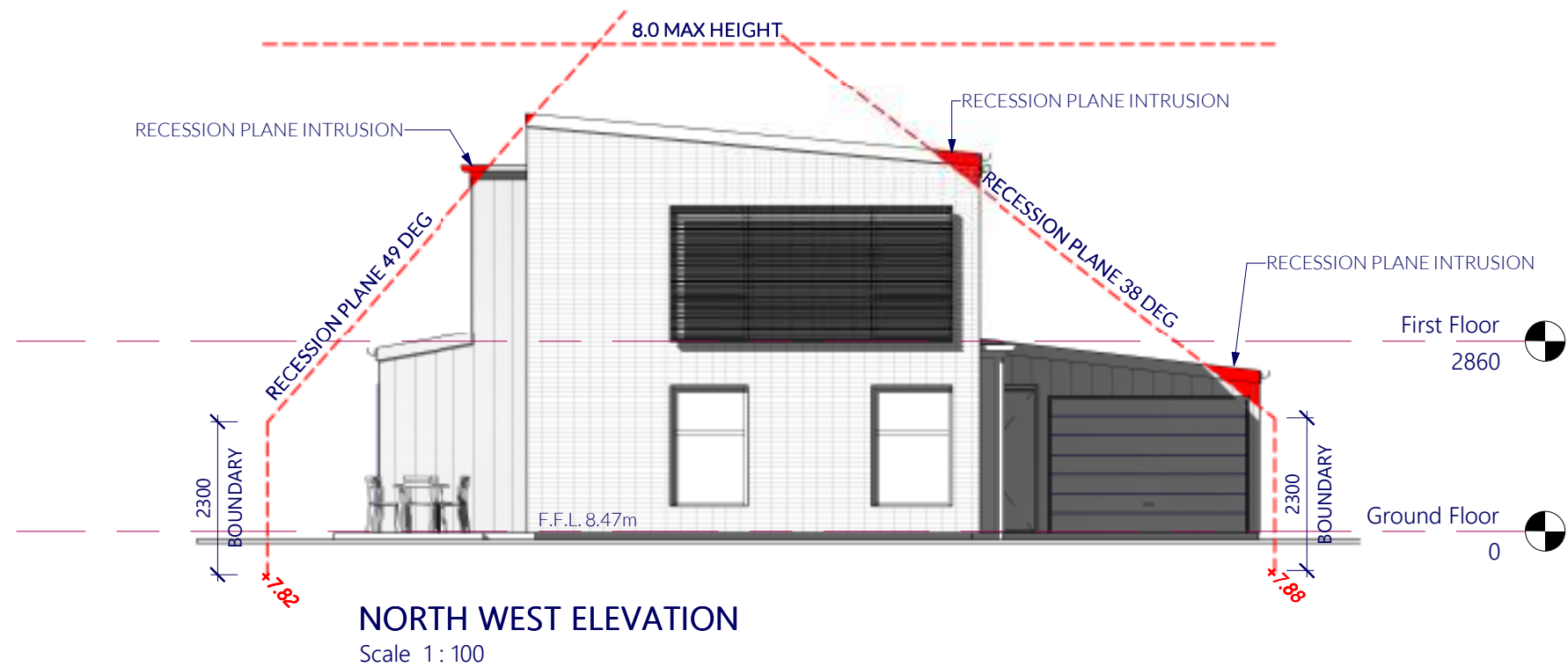
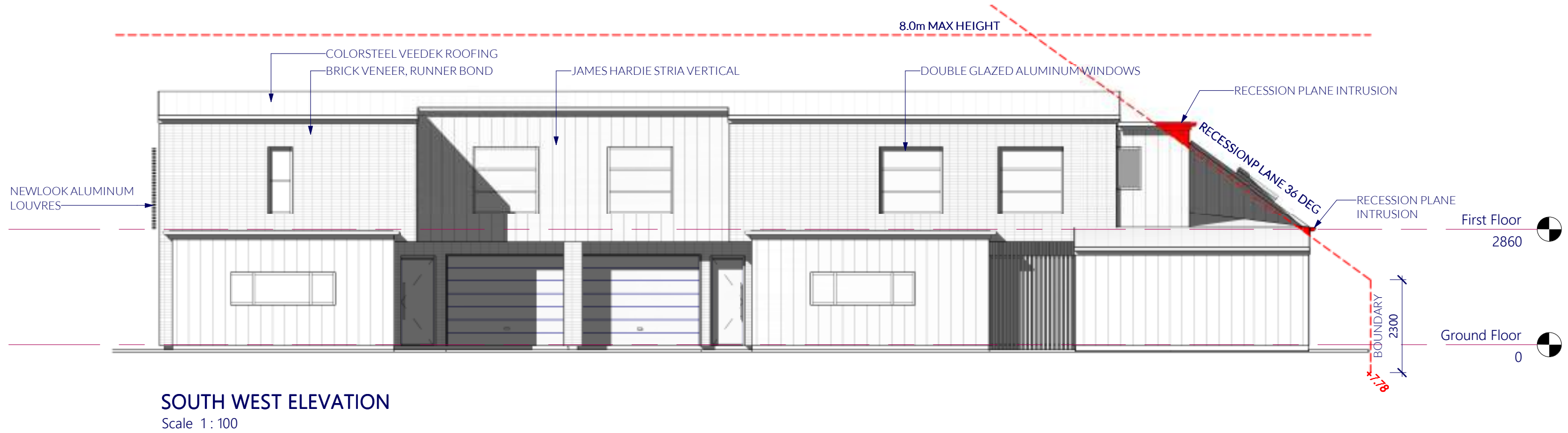
CONTRACTOR SHALL VERIFY ALL DIMENSIONS BEFORE STARTING WORK
DIMENSIONS ARE IN MILLIMETRES UNLESS STATED OTHERWISE

DSN.	SCALE AT A3	FILE	DRAWING
DRN.	1 : 100	19364	2.0
DRN CKD.			
APP.			
DATE 02/10/25		STAGE 2	

JosephDavid | Architecture

www.josephdavid.co.nz Ph: 0210635931 e-mail: joe@josephdavid.co.nz

PROPOSED DEVELOPMENT 13 CHEVIOT STREET



ELEVATIONS

CONTRACTOR SHALL VERIFY ALL DIMENSIONS BEFORE STARTING WORK
DIMENSIONS ARE IN MILLIMETRES UNLESS STATED OTHERWISE

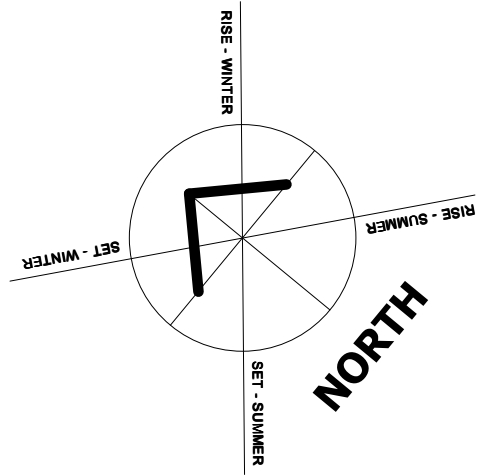
	SCALE AT A3	FILE	DRAWING
DSN.	1 : 100	19364	2.1
DRN.			
DRN CKD.			
APP.			
DATE	02/10/25	STAGE 2	

JosephDavid | Architecture

www.josephdavid.co.nz Ph: 0210635931 e-mail: joe@josephdavid.co.nz

PROPOSED DEVELOPMENT 13 CHEVIOT STREET

C:\Users\joepe\Dropbox\JOSEPHDAVID ARCHITECTURE\CURRENT JOBS\19364 13 CHEVIOT STREET\DRAWINGS (.rvt)\CHEVIOT STREET - RC
CHANGES.rvt
6/05/2025 10:13:05 am



GENERAL NOTES:

CLADDING MATERIAL:
JAMES HARDIE STRIA VERTICAL,
PAINT FINISH COOL BLACK RESENE X200

CANTERBURY CLAY BRICKS - KAWEKA - DARK GROUT
70 SEREIS BRICK VENEER - RUNNING BOND

ROOF CLADDING:
COLORSTEEL VEEDEK PROFILE - COLOUR - EBONY
ROOF PITCH: 5°

GROUND FLOOR HEIGHT TO UNDERSIDE OF STUDS: 2550
LINTEL HEIGHT: 2.200

FIRST FLOOR HEIGHT TO UNDERSIDE OF STUDS: 2400
LINTEL HEIGHT: 2.050

NB: ALL GLAZING (UNLESS STATED OTHERWISE) TO BE DOUBLE GLAZING TO COMPLY WITH NZS 4223
EBONY COLOUR POWDER COATED ALUMINIUM JOINERY.

ALL HARD FLOOR AREAS TO COMPLY WITH NZBC D1/AS1 TABLE 2.

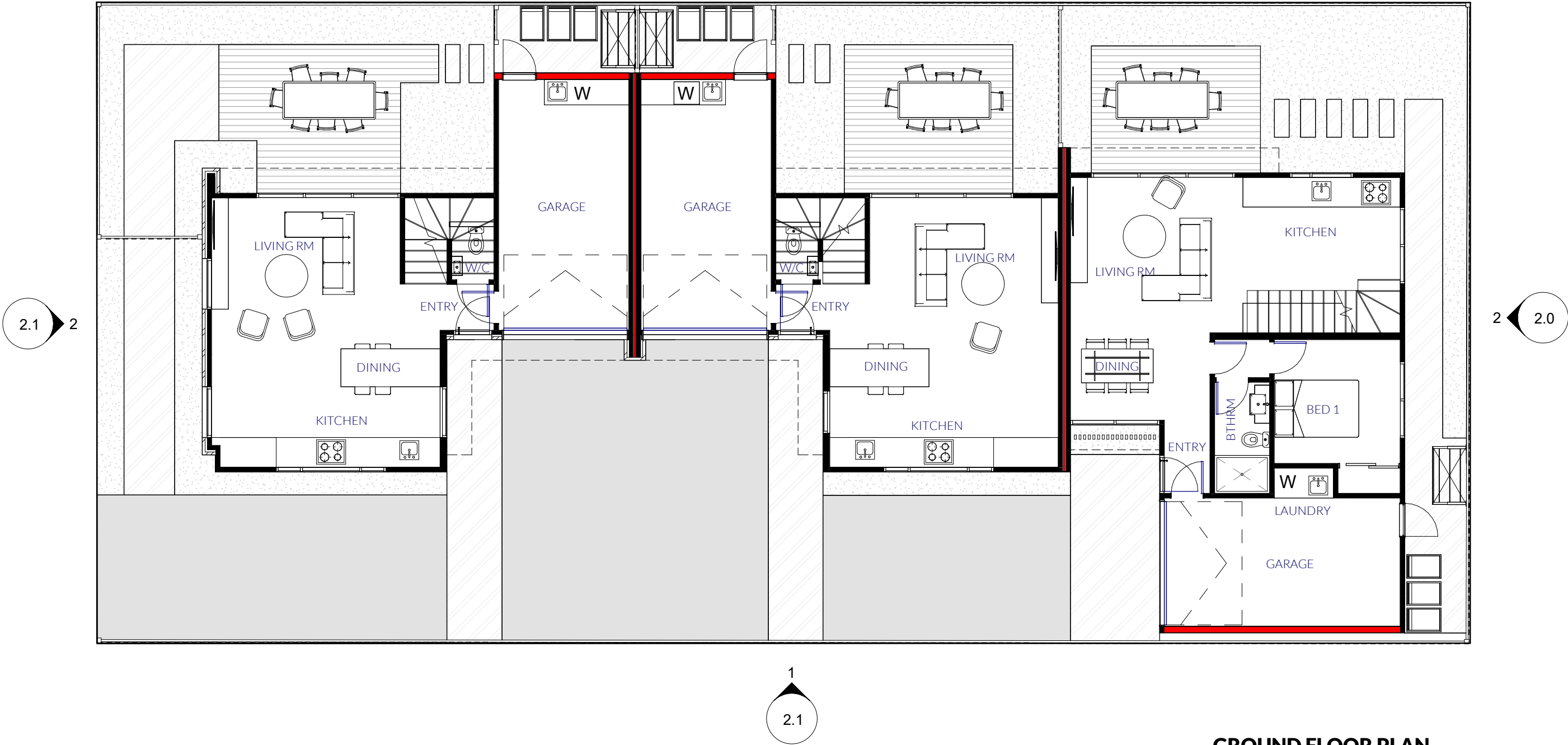
FLOOR TILES TO BE NON SLIP WITH SLIP RESISTANCE CO-EFFICIENT OF 0.35-0.65.

HEATING HEAT PUMPS

GIB AQUALINE WITH SATIN ENAMEL WALL FINISH TO ANY UNTILED BATHROOM AND ENSUITE WALLS AND
TO UNTILED WALLS ADJACENT TO SINKS/TUB IN KITCHEN/LAUNDRY.

MINIMUM OF ONE ROW OF TILES ABOVE ALL BASINS, TUBS, SINKS, BATH, VANITIES
AND KITCHEN/LAUNDRY BENCH TOPS.

KITCHEN BENCHTOPS TO BE IMPERVIOUS / PRESSURE LAMINATE OR ENGINEERED STONE
ANY BOTTOM EDGES TO BE FILLED WITH FUNGUS/MOLD RESISTANT SEALANT.



GROUND FLOOR PLAN

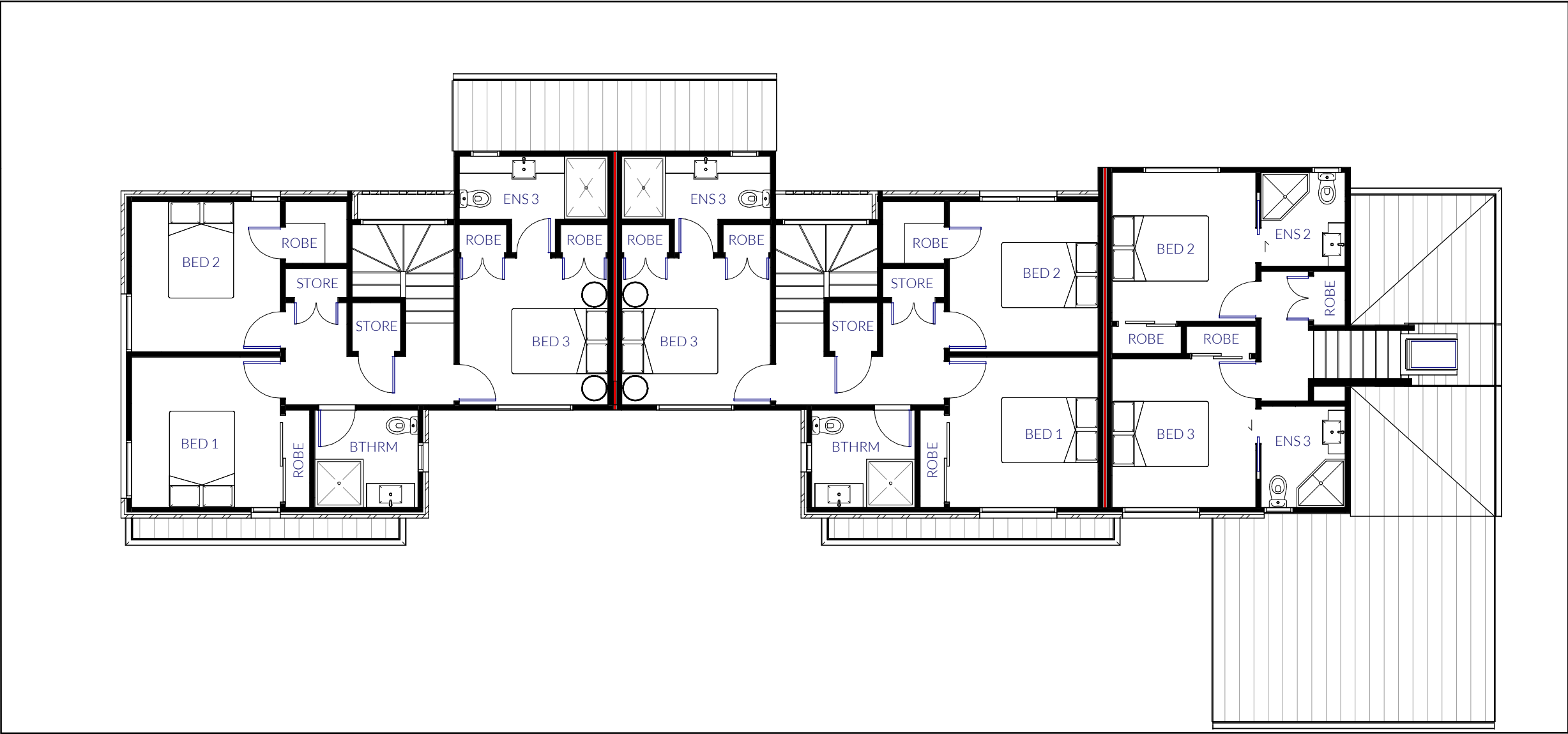
CONTRACTOR SHALL VERIFY ALL DIMENSIONS BEFORE STARTING WORK
DIMENSIONS ARE IN MILLIMETRES UNLESS STATED OTHERWISE

DSN.	SCALE AT A3	FILE	DRAWING
DRN.	1 : 100	19364	3.0
DRN CKD.			
APP.			
DATE 02/10/25		STAGE 2	

JosephDavid | Architecture

www.josephdavid.co.nz Ph: 0210635931 e-mail: joe@josephdavid.co.nz

PROPOSED DEVELOPMENT 13 CHEVIOT STREET



FIRST FLOOR PLAN

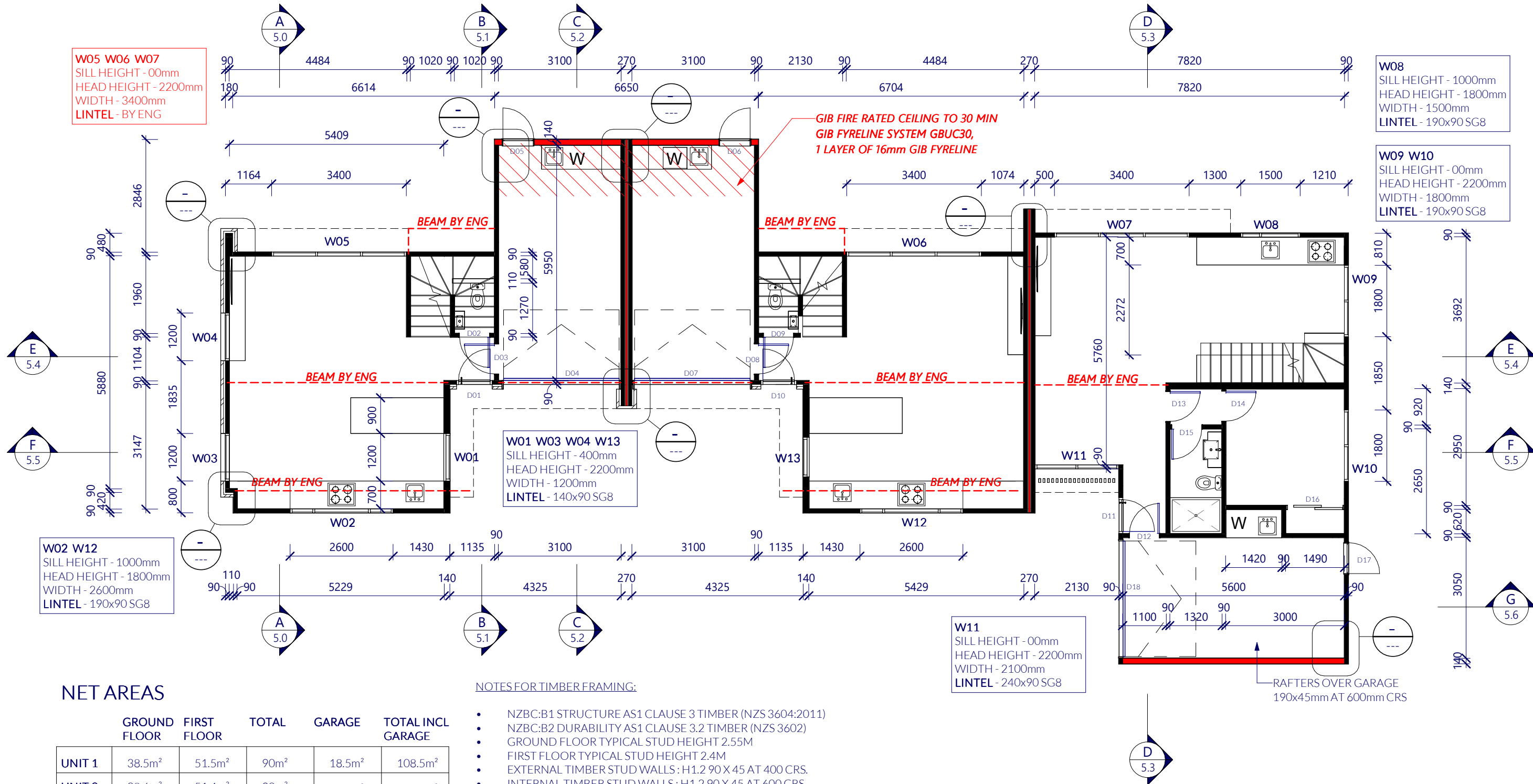
CONTRACTOR SHALL VERIFY ALL DIMENSIONS BEFORE STARTING WORK
DIMENSIONS ARE IN MILLIMETRES UNLESS STATED OTHERWISE

DSN.	SCALE AT A3	FILE	DRAWING
DRN.	1 : 100	19364	3.1
DRN CKD.		STAGE 2	
APP.			
DATE	02/10/25		

JosephDavid | Architecture

www.josephdavid.co.nz Ph: 0210635931 e-mail: joe@josephdavid.co.nz

PROPOSED DEVELOPMENT 13 CHEVIOT STREET



NET AREAS

	GROUND FLOOR	FIRST FLOOR	TOTAL	GARAGE	TOTAL INCL GARAGE
UNIT 1	38.5m²	51.5m²	90m²	18.5m²	108.5m²
UNIT 2	38.6m²	51.4m²	90m²	18.5m²	108.5m²
UNIT 3	52.2m²	32.6m²	84.8m²	18.2m²	103.1m²

GROSS AREAS

	GROUND FLOOR INCL GARAGE	FIRST FLOOR	TOTAL
UNIT 1	62.9m²	55.3m²	118.2m²
UNIT 2	62.6m²	55.3m²	117.9m²
UNIT 3	76.5m²	35m²	111.5m²

NOTES FOR TIMBER FRAMING:

- NZBC:B1 STRUCTURE AS1 CLAUSE 3 TIMBER (NZS 3604:2011)
- NZBC:B2 DURABILITY AS1 CLAUSE 3.2 TIMBER (NZS 3602)
- GROUND FLOOR TYPICAL STUD HEIGHT 2.55M
- FIRST FLOOR TYPICAL STUD HEIGHT 2.4M
- EXTERNAL TIMBER STUD WALLS: H1.2 90 X 45 AT 400 CRS.
- INTERNAL TIMBER STUD WALLS: H1.2 90 X 45 AT 600 CRS.
- STUDS FIXED TO BOTTOM PLATES WITH 4 SKEWED & 2 END NAILED 75 X 3.15 NAILS.
- TOP PLATES: 90 X 45 PLATE OVER 90 X 45 FIXED TO STUD/LINTEL WITH 2/90 X 3.15 END NAILS +2 WIRE DOGS AT 450 CTRS
- BOTTOM PLATES 90 X 45 FIXED TO SLAB OVER DPC WITH M10 X 140 BOWMAC SCREW BOLT AT 900MM CRS WITH 50 X 50 X 3.0 WASHER. MIN 150MM CROM EACH END OF TIMBER PLATE (REFER BRACING DETAILS FOR FIXINGS OF BRACING ELEMENTS.)
- 90 X 45 DWANGS AT 800MM CTRS FIXED TO STUDS WITH 2 SKEWED & 2 END NAILED 75 X 3.15 NAILS.
- LINTEL FIXINGS TO TRIMMING STUDS: 4 SKEWED & 2 END NAILED 75 X 3.15 NAILS.
- 13MM CEILING LININGS TO BE FIXED AS PER MANUFACTURERS RECOMENDATIONS TO USG CEILING BATTENS. BATTENS AT 450MM CRS MAX
- ALL FIXINGS TO COMPLY WITH NZS 3604:2011 SECTION 8 TABLE 8.19 NAILING SCHEDULE.
- MASONS BUILDING WRAP TO EXTERNAL WALLS
- MASONS ROOF UNDERLAY

REFER TO TRUSS MANUFACTURERS DOCUMENTATION

GROUND FLOOR FRAMING PLAN

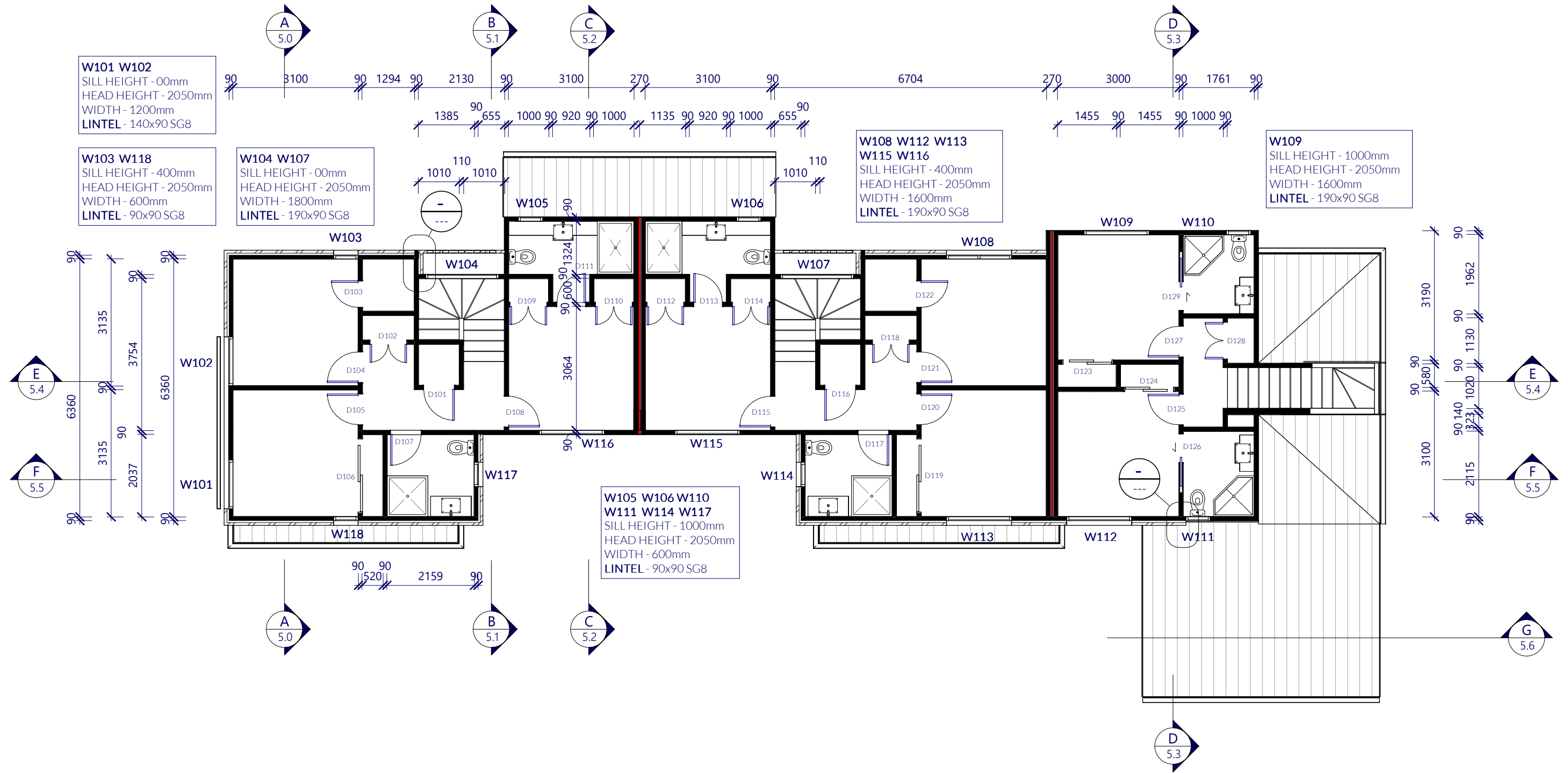
CONTRACTOR SHALL VERIFY ALL DIMENSIONS BEFORE STARTING WORK
DIMENSIONS ARE IN MILLIMETRES UNLESS STATED OTHERWISE

DSN.	SCALE AT A3	FILE	DRAWING
DRN.	1 : 100	19364	3.2
DRN CKD.			
APP.			
DATE 02/10/25		STAGE 2	

JosephDavid | Architecture

www.josephdavid.co.nz Ph: 0210635931 e-mail: joe@josephdavid.co.nz

PROPOSED DEVELOPMENT 13 CHEVIOT STREET



FIRST FLOOR FRAMING PLAN

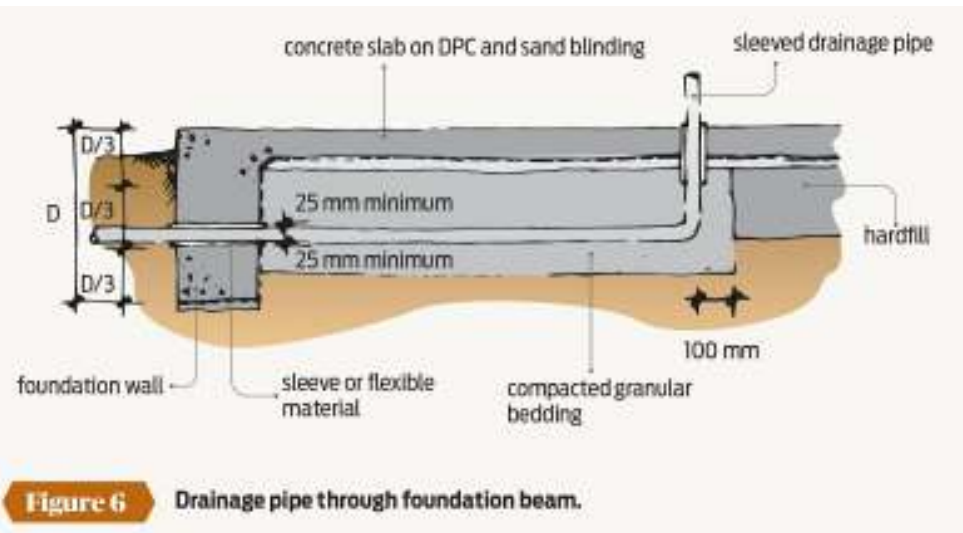
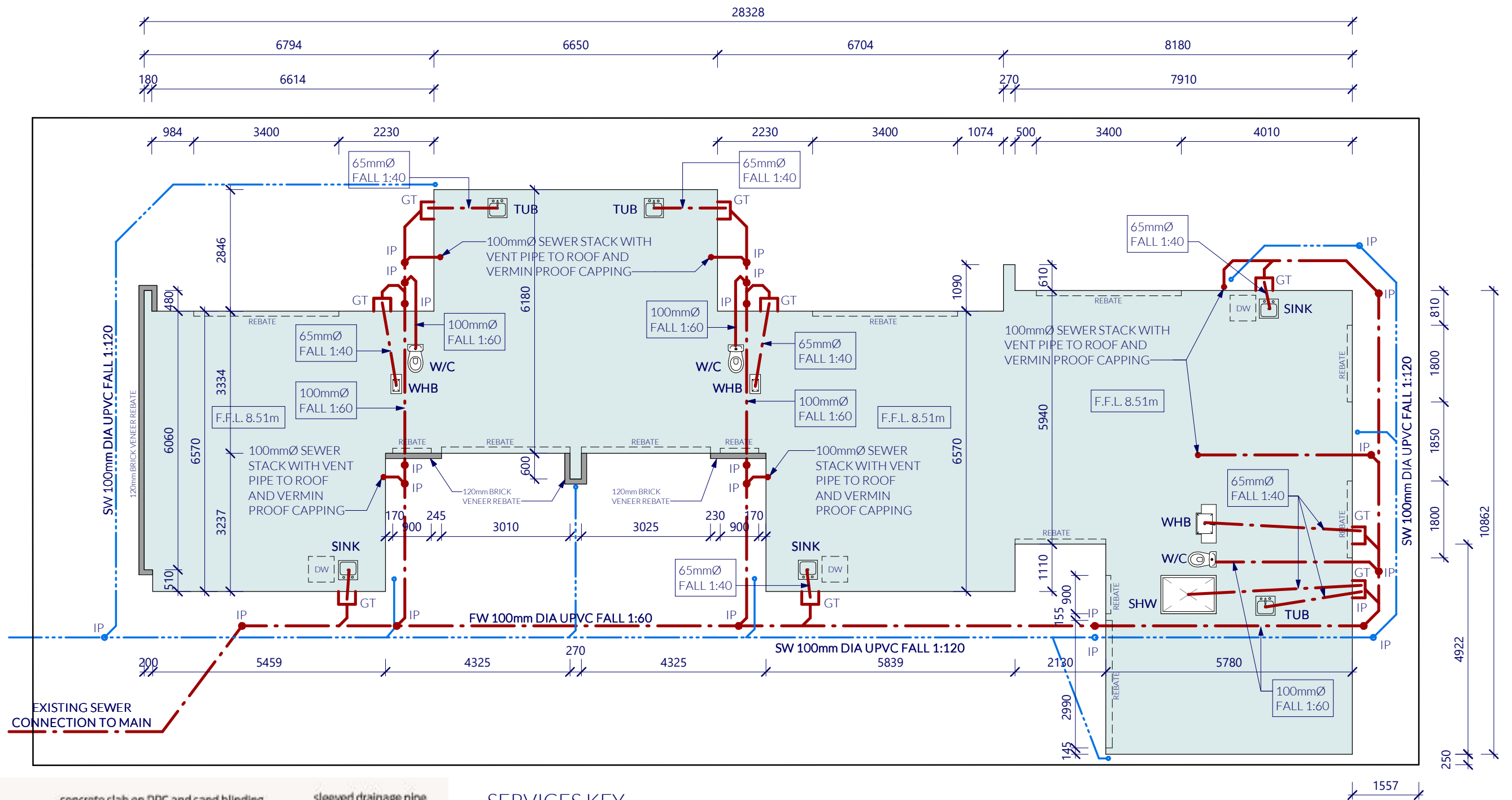
CONTRACTOR SHALL VERIFY ALL DIMENSIONS BEFORE STARTING WORK
DIMENSIONS ARE IN MILLIMETRES UNLESS STATED OTHERWISE

DSN.	SCALE AT A3	FILE	DRAWING
DRN.	1 : 100	19364	3.3
DRN CKD.			
APP.			
DATE 02/10/25		STAGE 2	

JosephDavid | Architecture

www.josephdavid.co.nz Ph: 0210635931 e-mail: joe@josephdavid.co.nz

PROPOSED DEVELOPMENT 13 CHEVIOT STREET



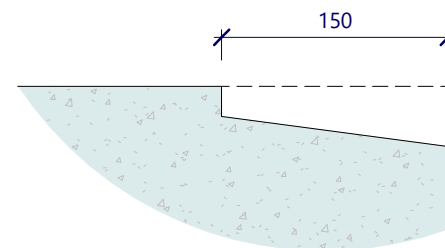
SERVICES KEY

- POWER
- SEWER
- WATER SUPPLY
- STORMWATER
- DATA

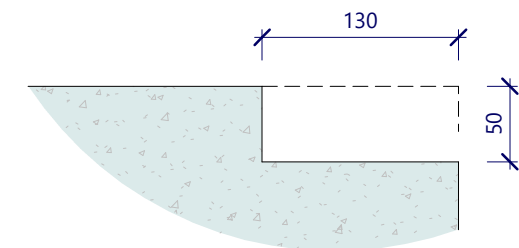
THE LOCATION OF ALL EXISTING SERVICES SHALL BE VERIFIED ON SITE BEFORE STARTING WORK. REFER TO UTILITY PROVIDER SERVICES PLANS FOR MORE DETAILED INFORMATION

HOT AND COLD WATER SUPPLY SYSTEMS TO COMPLY WITH SECTION 5 AND 6 G12/AS1 NZBC

PLUMBING TO BE INSTALLED AS PER NZBC G13/AS2



TYPICAL GARAGE REBATE



TYPICAL WINDOW REBATE

SLAB PLAN

CONTRACTOR SHALL VERIFY ALL DIMENSIONS BEFORE STARTING WORK
DIMENSIONS ARE IN MILLIMETRES UNLESS STATED OTHERWISE

SCALE AT A3	FILE	DRAWING
As indicated	19364	3.4
	STAGE 2	

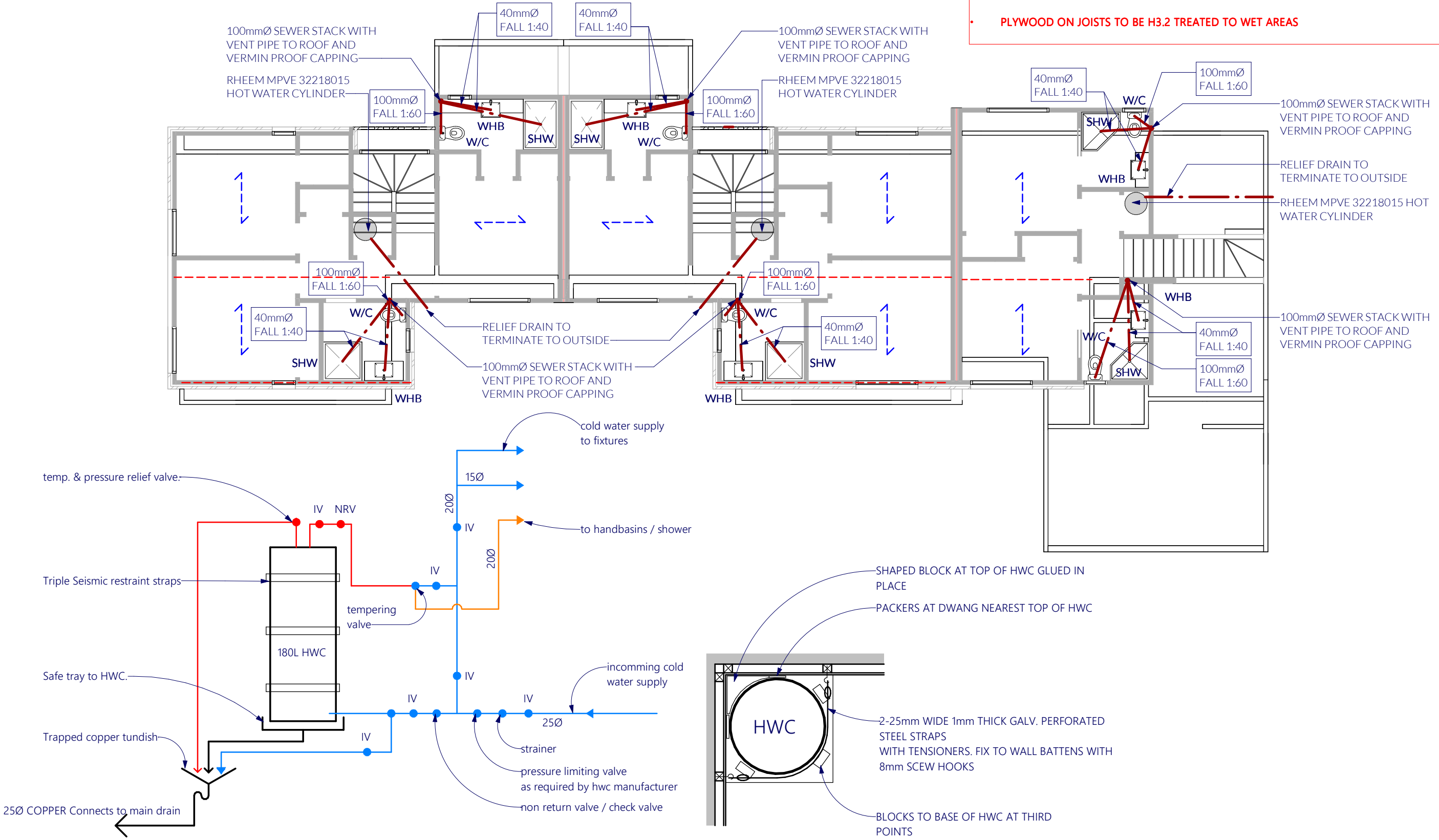
DSN.
DRN.
DRN CKD.
APP.
DATE 05/04/25

JosephDavid | Architecture

www.josephdavid.co.nz Ph: 0210635931 e-mail: joe@josephdavid.co.nz

PROPOSED DEVELOPMENT 13 CHEVIOT STREET

C:\Users\joepel\Dropbox\JOSEPHDAVID ARCHITECTURE\CURRENT JOBS\19364 13 CHEVIOT STREET\DRAWINGS (.rvt)\CHEVIOT STREET - RC
CHANGES.rvt
6/05/2025 10:13:07 am



WATER INSTALLATION LAYOUT - MAIN HWC

PLAN - HWC RESTRAINT

25L UNDERBENCH HWC DO NOT NEED RESTRAINT

JOIST / PLUMBING LAYOUT

CONTRACTOR SHALL VERIFY ALL DIMENSIONS BEFORE STARTING WORK
DIMENSIONS ARE IN MILLIMETRES UNLESS STATED OTHERWISE

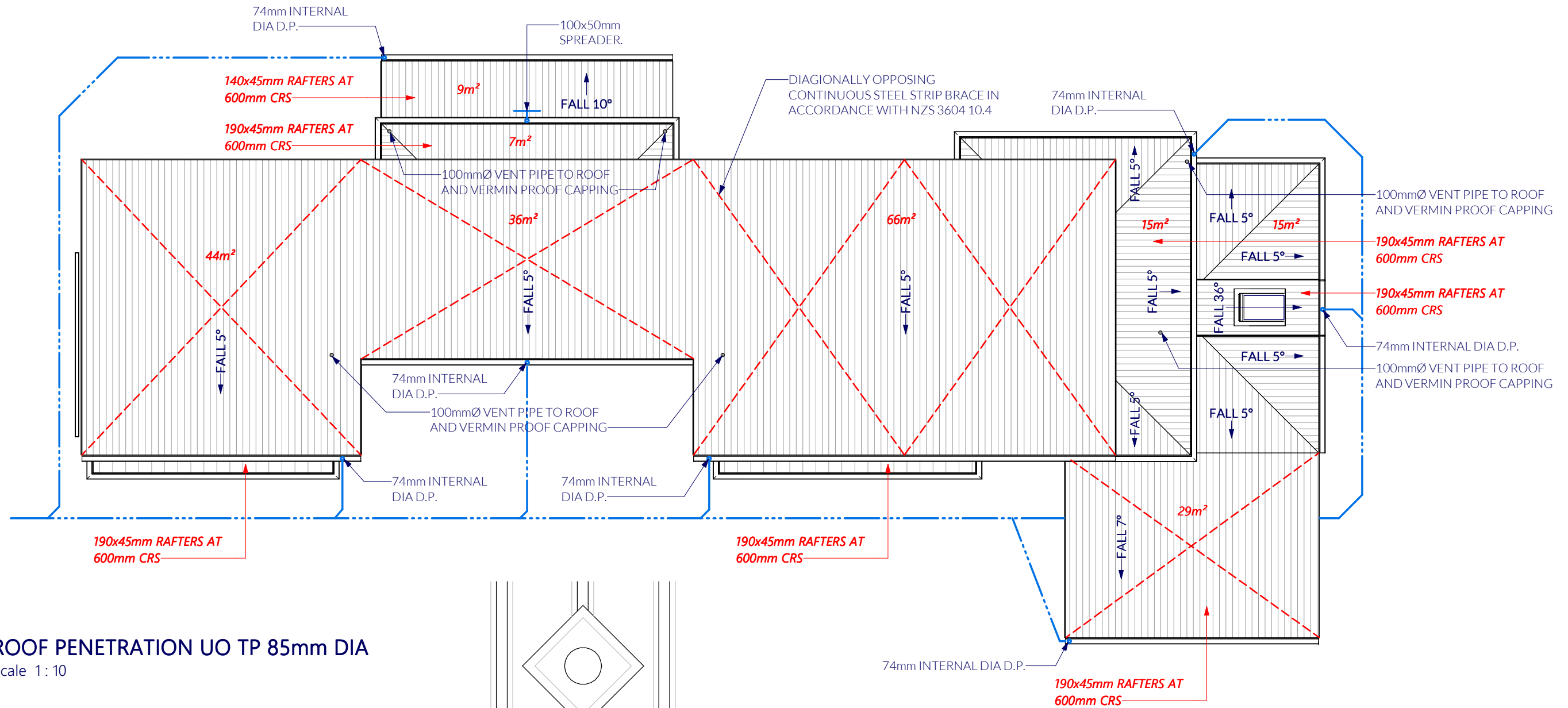
	SCALE AT A3	FILE	DRAWING
DSN.	As indicated	19364	3.5
DRN.			
DRN CKD.			
APP.			
DATE	05/04/25		
		STAGE 2	

JosephDavid | Architecture

www.josephdavid.co.nz Ph: 0210635931 e-mail: joe@josephdavid.co.nz

PROPOSED DEVELOPMENT 13 CHEVIOT STREET

C:\Users\joepe\Dropbox\JOSEPHDAVID ARCHITECTURE\CURRENT JOBS\19364 13 CHEVIOT STREET\DRAWINGS (.rvt)\CHEVIOT STREET - RC
CHANGES.rvt
6/05/2025 10:13:08 am



ROOF PENETRATION UO TP 85mm DIA

Scale 1: 10

UNDERLAY TO BE NEATLY CUT ONLY JUST LARGER THAN PIPE. TAPE PIPE TO UNDERLAY ALL WAY AROUND WITH WATERPROOF FLASHING TAPE

0.55BMT COLORSTEEL VEEDEK LONG RUN

ROOF UNDERLAY

MAXIMUM PIPE SIZE 85mmØ

DEKTITE FLEXIBLE CONE SLEEVE

PLAN

CENTRE PENETRATION ON A ROOFING RIDGE

DO NOT COMPLETELY BLOCK ANY ROOFING TROUGHS.

ROOF PLAN

CONTRACTOR SHALL VERIFY ALL DIMENSIONS BEFORE STARTING WORK
DIMENSIONS ARE IN MILLIMETRES UNLESS STATED OTHERWISE

DSN.	SCALE AT A3	FILE	DRAWING
DRN.	As indicated	19364	3.6
DRN CKD.			
APP.			
DATE	05/04/25	STAGE 2	

JosephDavid | Architecture

www.josephdavid.co.nz Ph: 0210635931 e-mail: joe@josephdavid.co.nz

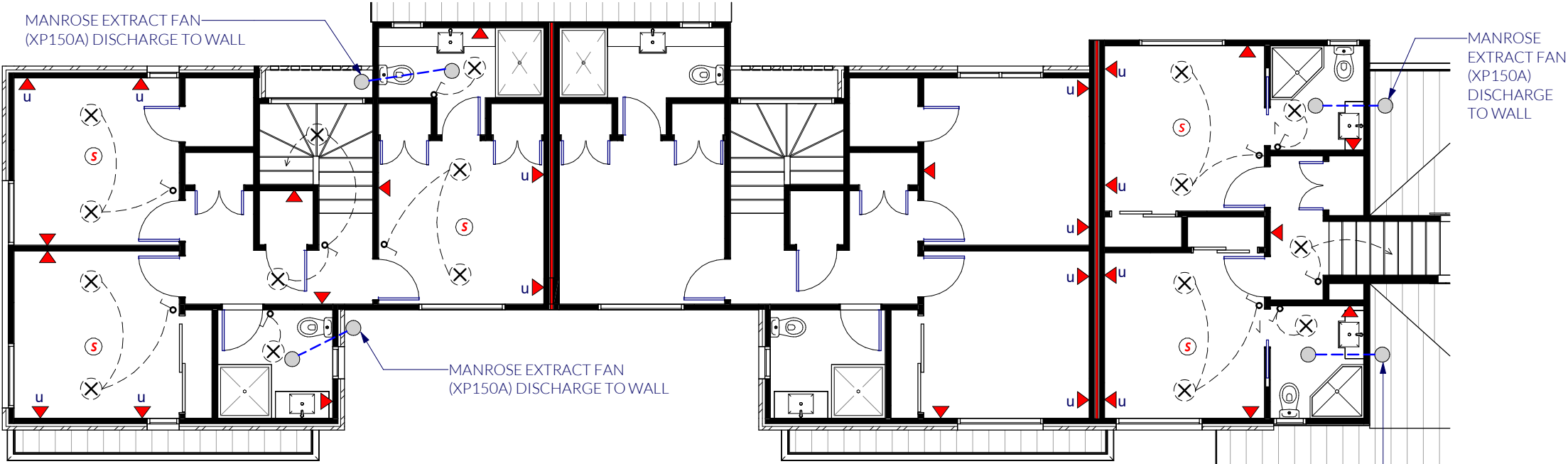
PROPOSED DEVELOPMENT 13 CHEVIOT STREET

ELECTRICAL KEY

Scale 1 : 100

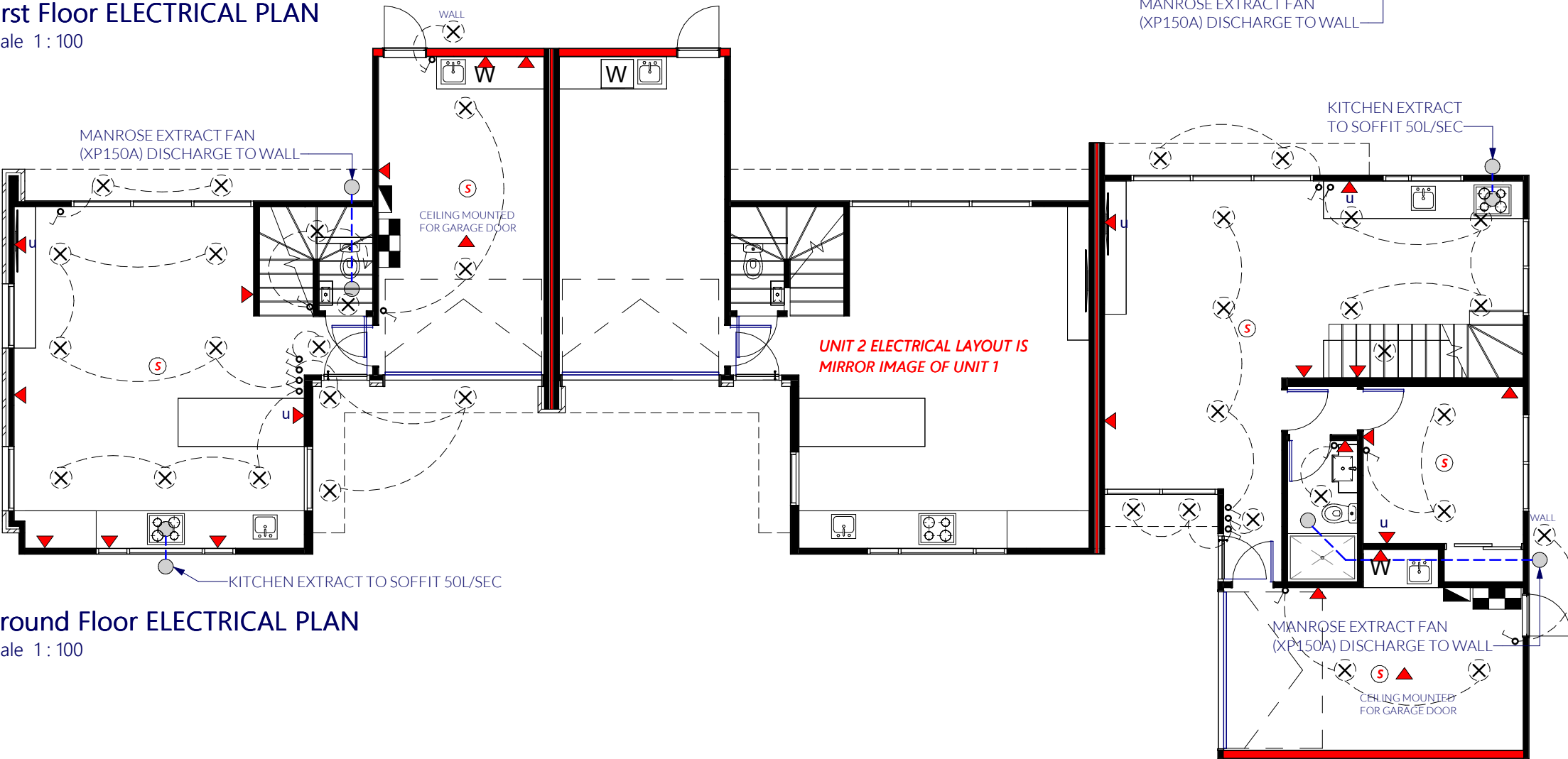
- POWER METER BOX
- POWER SWITCH BOX
- DOUBLE POWER SOCKET
- EXTERIOR SINGLE POWER SOCKET
- FAST CHARGE EV PLUG
- DOUBLE POWER SOCKET WITH USB PORT
- LIGHT SWITCH
- RECESSED IC RATED LED DOWN LIGHT
- PENDANT DROP LIGHT FITTING
- SURFACE MOUNTED LED LIGHT FITTING
- SENSOR ACTIVATED RECESSED IC RATED LED DOWN LIGHT
- EXTRACT FAN (ON TIME DELAY SWITCH FOR BATHROOMS)
- PHOTOELECTRIC INTERCONNECTING SMOKE DETECTORS ARE TO BE INSTALLED TO NZS 4514 A7 CONNECTED TO MAINS POWER

- NOTE:
- ALL DOWN LIGHTS ARE TO BE IC RATED
 - CONFIRM ALL DATA AND TELEPHONE REQUIREMENTS WITH OWNER
 - CONFIRM SECURITY MONITORING REQUIREMENTS WITH OWNER
 - INSTALL A HEAT PUMP SYSTEM AS REQUIRED
 - CONFIRM ANY LANDSCAPING LIGHTING WITH OWNER
 - SURFACE MOUNTED LIGHTS TO FIRE RATED CEILING ELEMENTS



First Floor ELECTRICAL PLAN

Scale 1 : 100



Ground Floor ELECTRICAL PLAN

Scale 1 : 100

ELECTRICAL PLAN

CONTRACTOR SHALL VERIFY ALL DIMENSIONS BEFORE STARTING WORK
DIMENSIONS ARE IN MILLIMETRES UNLESS STATED OTHERWISE

	SCALE AT A3	FILE	DRAWING
DSN.	1 : 100	19364	3.7
DRN.			
DRN CKD.			
APP.			
DATE	05/05/25	STAGE 2	

JosephDavid | Architecture

www.josephdavid.co.nz Ph: 0210635931 e-mail: joe@josephdavid.co.nz

PROPOSED DEVELOPMENT 13 CHEVIOT STREET

Door Schedule						
Mark	Width	Height	Operation	Description	Function	General
Ground Floor						
01	800	2150	RIGHT HAND OPENING	ALUMINUM CLAD WITH VISION PANEL	Interior	ARCHITECTURAL KEY PAD LOCK AND LEVER HANDLE
02	760	2200	LEFT HAND OPENING	HOLLOW CORE PANEL WITH PAINT FINISH	Interior	LEVER HANDLE WITH PRIVACY LOCK
03	760	2200	RIGHT HAND OPENING	HOLLOW CORE PANEL WITH PAINT FINISH	Interior	LEVER HANDLE ONLY
04	3000	2200	OVERHEAD SECTIONAL	FLAT PANEL ALUMINUM	Exterior	PUSH BUTTON AND REMOTE OPERATED
05	810	2200	LEFT HAND OPENING	DOUBLE GLAZED ALUMIUM FRAMED	Exterior	LEVER HANDLE WITH KEY LOCK TO OUTSIDE AND LATCH LOCK INSIDE
06	810	2200	RIGHT HAND OPENING	DOUBLE GLAZED ALUMIUM FRAMED	Exterior	LEVER HANDLE WITH KEY LOCK TO OUTSIDE AND LATCH LOCK INSIDE
07	3000	2200	OVERHEAD SECTIONAL	FLAT PANEL ALUMINUM	Exterior	PUSH BUTTON AND REMOTE OPERATED
08	760	2200	LEFT HAND OPENING	HOLLOW CORE PANEL WITH PAINT FINISH	Interior	LEVER HANDLE ONLY
09	760	2200	RIGHT HAND OPENING	HOLLOW CORE PANEL WITH PAINT FINISH	Interior	LEVER HANDLE WITH PRIVACY LOCK
10	800	2150	LEFT HAND OPENING	ALUMINUM CLAD WITH VISION PANEL	Interior	ARCHITECTURAL KEY PAD LOCK AND LEVER HANDLE
11	800	2150	RIGHT HAND OPENING	ALUMINUM CLAD WITH VISION PANEL	Interior	ARCHITECTURAL KEY PAD LOCK AND LEVER HANDLE
12	760	2200	RIGHT HAND OPENING	HOLLOW CORE PANEL WITH PAINT FINISH	Interior	LEVER HANDLE ONLY
13	760	2200	LEFT HAND OPENING	HOLLOW CORE PANEL WITH PAINT FINISH	Interior	LEVER HANDLE ONLY
14	760	2200	LEFT HAND OPENING	HOLLOW CORE PANEL WITH PAINT FINISH	Interior	LEVER HANDLE ONLY
15	760	2200	RIGHT HAND OPENING	HOLLOW CORE PANEL WITH PAINT FINISH	Interior	LEVER HANDLE WITH PRIVACY LOCK
16	1400	2200	DUAL SLIDING	MDF PANEL WITH PAINT FINISH	Interior	SOFT CLOSE EDGES WITH TOP AND BOTTOM TRACK
17	810	2200	RIGHT HAND OPENING	DOUBLE GLAZED ALUMIUM FRAMED	Exterior	LEVER HANDLE WITH KEY LOCK TO OUTSIDE AND LATCH LOCK INSIDE
18	3000	2000	OVERHEAD SECTIONAL	FLAT PANEL ALUMINUM	Exterior	PUSH BUTTON AND REMOTE OPERATED
First Floor						
101	760	2200	LEFT HAND OPENING	HOLLOW CORE PANEL WITH PAINT FINISH	Interior	LEVER HANDLE ONLY
102	900	2200	DUAL OPENING	HOLLOW CORE PANEL WITH PAINT FINISH	Interior	LEVER HANDLE ONLY
103	660	2200	RIGHT HAND OPENING	HOLLOW CORE PANEL WITH PAINT FINISH	Interior	LEVER HANDLE ONLY
104	760	2200	LEFT HAND OPENING	HOLLOW CORE PANEL WITH PAINT FINISH	Interior	LEVER HANDLE ONLY
105	760	2200	RIGHT HAND OPENING	HOLLOW CORE PANEL WITH PAINT FINISH	Interior	LEVER HANDLE ONLY
106	1800	2200	DUAL SLIDING	MDF PANEL WITH PAINT FINISH	Interior	SOFT CLOSE EDGES WITH TOP AND BOTTOM TRACK
107	760	2200	RIGHT HAND OPENING	HOLLOW CORE PANEL WITH PAINT FINISH	Interior	LEVER HANDLE WITH PRIVACY LOCK
108	760	2200	RIGHT HAND OPENING	HOLLOW CORE PANEL WITH PAINT FINISH	Interior	LEVER HANDLE ONLY
109	900	2200	DUAL OPENING	HOLLOW CORE PANEL WITH PAINT FINISH	Interior	LEVER HANDLE ONLY
110	900	2200	DUAL OPENING	HOLLOW CORE PANEL WITH PAINT FINISH	Interior	LEVER HANDLE ONLY
111	710	2200	RIGHT HAND OPENING	HOLLOW CORE PANEL WITH PAINT FINISH	Interior	LEVER HANDLE WITH PRIVACY LOCK
112	900	2200	DUAL OPENING	HOLLOW CORE PANEL WITH PAINT FINISH	Interior	LEVER HANDLE ONLY
113	710	2200	LEFT HAND OPENING	HOLLOW CORE PANEL WITH PAINT FINISH	Interior	LEVER HANDLE WITH PRIVACY LOCK
114	900	2200	DUAL OPENING	HOLLOW CORE PANEL WITH PAINT FINISH	Interior	LEVER HANDLE ONLY
115	760	2200	LEFT HAND OPENING	HOLLOW CORE PANEL WITH PAINT FINISH	Interior	LEVER HANDLE ONLY
116	760	2200	RIGHT HAND OPENING	HOLLOW CORE PANEL WITH PAINT FINISH	Interior	LEVER HANDLE ONLY
117	760	2200	LEFT HAND OPENING	HOLLOW CORE PANEL WITH PAINT FINISH	Interior	LEVER HANDLE WITH PRIVACY LOCK
118	900	2200	DUAL OPENING	HOLLOW CORE PANEL WITH PAINT FINISH	Interior	LEVER HANDLE ONLY
119	1800	2200	DUAL SLIDING	MDF PANEL WITH PAINT FINISH	Interior	SOFT CLOSE EDGES WITH TOP AND BOTTOM TRACK
120	760	2200	LEFT HAND OPENING	HOLLOW CORE PANEL WITH PAINT FINISH	Interior	LEVER HANDLE ONLY
121	760	2200	RIGHT HAND OPENING	HOLLOW CORE PANEL WITH PAINT FINISH	Interior	LEVER HANDLE ONLY
122	660	2200	LEFT HAND OPENING	HOLLOW CORE PANEL WITH PAINT FINISH	Interior	LEVER HANDLE ONLY
123	1200	2200	DUAL SLIDING	MDF PANEL WITH PAINT FINISH	Interior	SOFT CLOSE EDGES WITH TOP AND BOTTOM TRACK
124	1200	2200	DUAL SLIDING	MDF PANEL WITH PAINT FINISH	Interior	SOFT CLOSE EDGES WITH TOP AND BOTTOM TRACK
125	760	2200	RIGHT HAND OPENING	HOLLOW CORE PANEL WITH PAINT FINISH	Interior	LEVER HANDLE ONLY
126	710	2200	CAVITY SLIDER	HOLLOW CORE PANEL WITH PAINT FINISH	Interior	RECESSED HANDLE WITH PRIVACY LOCK
127	760	2200	LEFT HAND OPENING	HOLLOW CORE PANEL WITH PAINT FINISH	Interior	LEVER HANDLE ONLY
128	900	2200	DUAL OPENING	HOLLOW CORE PANEL WITH PAINT FINISH	Interior	LEVER HANDLE ONLY
129	710	2200	CAVITY SLIDER	HOLLOW CORE PANEL WITH PAINT FINISH	Interior	RECESSED HANDLE WITH PRIVACY LOCK

DOOR SCHEDULE

CONTRACTOR SHALL VERIFY ALL DIMENSIONS BEFORE STARTING WORK
DIMENSIONS ARE IN MILLIMETRES UNLESS STATED OTHERWISE

	SCALE AT A3	FILE	DRAWING
DSN.			
DRN.			
DRN CKD.			
APP.			
DATE	05/05/25		
		19364	4.0
		STAGE 2	

C:\Users\joepel\Dropbox\JOSEPHDAVID ARCHITECTURE\CURRENT JOBS\19364 13 CHEVIOT STREET\DRAWINGS (.rvt)\CHEVIOT STREET - RC CHANGES.rvt
6/05/2025 10:13:09 am

REQUIREMENTS FOR RADIATA PINE AND DOUGLAS FIR SOLID TIBER TO ACHIEVE A 15 YEAR DURABILITY PERFORMANCE

WOOD BASED BUILDING COMPONENT	TIMBER SPECIES	LEVEL OF TREATMENT TO NZS 3604 (2)
(B) MEMBERS PROTECTED FROM THE WEATHER AND DAMPNESS		
2B.1 • NON-LOAD BEARING INTERIOR WALL FRAMING	• RADIATA PINE • DOUGLAS FIR (14)	• H 1.2
2B.2 • STAIR TREADS, RISERS AND HANDRAILS	• RADIATA PINE • DOUGLAS FIR (14)	• NONE

REQUIREMENTS FOR RADIATA PINE AND DOUGLAS FIR SOLID TIBER TO ACHIEVE A MINIMUM 50 YEAR DURABILITY PERFORMANCE

WOOD BASED BUILDING COMPONENT	TIMBER SPECIES	LEVEL OF TREATMENT TO NZS 3604 (2)
(C) MEMBERS PROTECTED FROM THE WEATHER BUT EXPOSED TO GROUND ATMOSPHERE		
1C.1 • JACKSTUDS • SUBFLOOR BRACES • BEARERS • WALL PLATES • FLOOR JOISTS TO THE SUBFLOOR • BLOCKING • SUBFLOOR WALL STUDS • WAILINGS AND BATTENS • WALL STUDS AND NOGS • DIAGONAL BOARDS	• RADIATA PINE • DOUGLAS FIR	• H 1.2
1C.3 • INTERIOR FLOORING • SUSPENDED GROUND FLOORS	• RADIATA PINE • DOUGLAS FIR	• H 1.2
(D) MEMBERS PROTECTED FROM THE WEATHER BUT WITH A RISK OF MOISTURE PENETRATION CONDUCTIVE TO DECAY		
1D.1 • SARKING AND FRAMING NOT PROTECTED FROM SOLAR DRIVEN MOISTURE THROUGH ABSORBENT CLADDING MATERIAL (8)	• RADIATA PINE • DOUGLAS FIR	• H 1.2
1D.2 • ENCLOSED FLAT ROOF FRAMING AND ASSOCIATED ROOF MEMBERS	• RADIATA PINE • DOUGLAS FIR	• H 1.2
1D.3 • ENCLOSED SKILLION ROOF FRAMING AND ASSOCIATED ROOF MEMBERS	• RADIATA PINE • DOUGLAS FIR	• H 1.2
1D.4 • VALLEY BOARDS • BOARDS SUPPORTING FLASHINGS OF BOX GUTTERS • FLASHING TO ROOF PENETRATIONS AND UPSTANDS TO ROOF DECKS (10)	• RADIATA PINE • DOUGLAS FIR	• H 1.2

NOTES:

- (2) TIMBER TREATED TO A HIGHER LEVEL THAN THE MIMIMUM, SATASFIES THE MINIMUM REQUIREMENTS
- (5) H3.2 REFERS TO PRESERVATIVE TREATMENTS OUTLINES IN NZS 3604
- (8) TIMBER SHAKES AND SHINGLES, AND SIMILAR ABSORBENT CLADDINGS, ABSORB MOISTURE THAT CAN BE DRIVEN IN FRAME CAVITIES BY EVAPORATIONS. UNLESS THE CAVITIES ARE ADEQUATELY DRAINED AND VENTILATE, CONTINUING CONDENSATION CAUSED BY SOLAR DRIVEN TRANSFER INCREASES THE MOISTURE CONTENT IN THE CAVITIES AND TIMBER FRAMING REQUIRING A HIGHER LEVEL OF TIMBER TREATMENT TO RESIST DECAY
- (9) SUCH AS JOISTS, LINTELS, WALL PLATES AND DOUBLE TOP PLATES, STUDS, TOGETHER WIH PARAPETS, ENCLOSED BALUSTRADES, BOXED COLUMNS AND CHIMNEYS
- (10) ANY METAL FLASHING SHALL BE SEPARATED FROM THE TREATED TIMBER WITH BUILDING PAPER
- (11) EXPOSED ENDS OF JOISTS SHALL BE PROTECTED BY A BOUNDARY JOIST
- (14) EXCEPTIONS TO THE LEVELS OF TREATMENT FOR DOUGLAS FIR ARE PROVIDED IN PARAGAPH 3.2.2.2 OF NZBC B2 AS1

WOOD BASED BUILDING COMPONENT	TIMBER SPECIES	LEVEL OF TREATMENT TO NZS 3604 (2)
WALL MEMBERS (IN OR ASSOCIATED WITH)		
1D.5 • FRAMING AND OTHER MEMBERS WITHIN OR BENEATH A PARAPET	• RADIATA PINE • DOUGLAS FIR	• H 1.2
1D.6 • FRAMING AND OTHER MEMBERS WITHIN ENCLOSED DECKS OR BALCONIES	• RADIATA PINE • DOUGLAS FIR	• H 1.2
1D.7 • CANTILEVERED ENCLOSED DECK JOISTS • ASSOCIATED ENCLOSED DECK FRAMING, INCLUDING JOIST TRIMMERS, NOGS AND BLOCKING (5)	• RADIATA PINE • DOUGLAS FIR	• H 3.2
1D.8 • FRAMING AND OTHER MEMBERS SUPPORTING ENCLOSED DECKS (INCLUDING CANTILEVERED DECKS) OR BALCONIES	• RADIATA PINE • DOUGLAS FIR	• H 1.2
1D.10 • BATTENS USED BEHIND CLADDING TO FORM A CAVITY	• RADIATA PINE • DOUGLAS FIR	• H 3.1
1D.14 • ALL OTHER EXTERIOR WALL FRAMING AND OTHER MEMBERS INCLUDING EXTERIOR AND BOUNDARY JOIST (9) (11)	• RADIATA PINE • DOUGLAS FIR	• H 1.2
(E) MEMBERS NO EXPOSED TO WEATHER OR GROUND ATMOSPHERE AND IN DRY CONDITIONS		
1E.1 • ALL ROOF TRUSSES • ROOF FRAMING • CEILING AND EAVES FRAMING • PURLINS AND BATTENS	• RADIATA PINE • DOUGLAS FIR (14)	• H 1.2
1E.2 • ALL MIDFLOOR FRAMING • BOUNDARY JOISTS • CEILING FRAMING • CEILING BATTENS • DOUBLE TOP PLATES	• RADIATA PINE • DOUGLAS FIR (14)	• H 1.2
1E.3 • WALL FRAMING AND ROOF FRAMING (INCL TRUSSES) PROTECTED FROM THE WEATHER, IN UNLINES AND UNOCCUPIED FARM BUILDINGS AND OUTBUILDINGS EXCEPT THOSE NOT ALLOWED IN 110.2(F) OF NZS 3602	• RADIATA PINE • DOUGLAS FIR	• NONE
1E.5 • INTERNAL WALLS	• RADIATA PINE • DOUGLAS FIR (14)	• H 1.2
1E.7 • INTERIOR FLOORING	• PINUS SPECIES • DOUGLAS FIR (14)	• H 1.2

TIMBER TREATMENT

CONTRACTOR SHALL VERIFY ALL DIMENSIONS BEFORE STARTING WORK
DIMENSIONS ARE IN MILLIMETRES UNLESS STATED OTHERWISE

DSN.	SCALE AT A3	FILE	DRAWING
DRN.	1 : 100	19364	4.1
DRN CKD.			
APP.			
DATE	05/05/25	STAGE 2	

JosephDavid | Architecture

www.josephdavid.co.nz Ph: 0210635931 e-mail: joe@josephdavid.co.nz

PROPOSED DEVELOPMENT 13 CHEVIOT STREET



CROSS SECTION

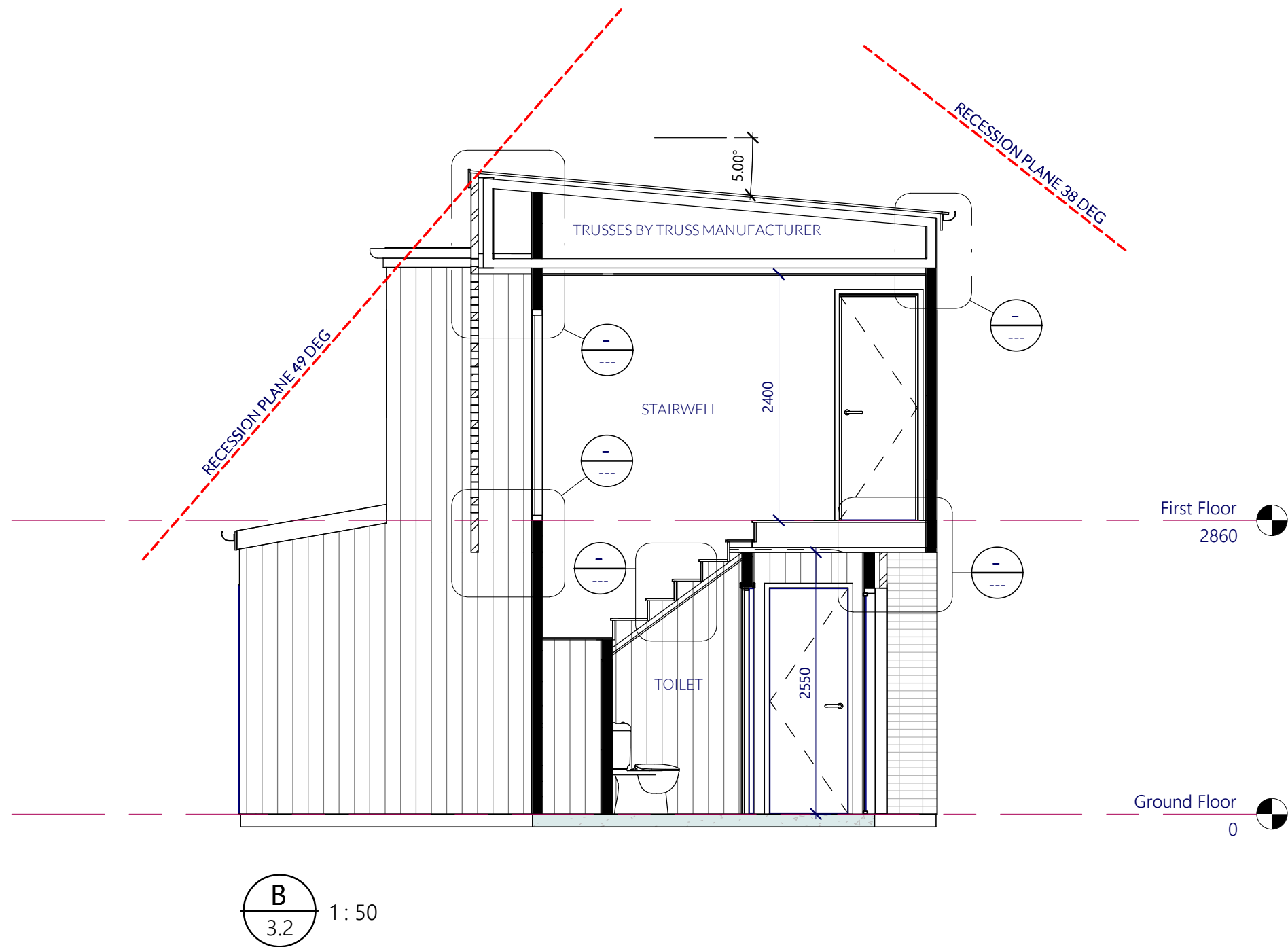
CONTRACTOR SHALL VERIFY ALL DIMENSIONS BEFORE STARTING WORK
DIMENSIONS ARE IN MILLIMETRES UNLESS STATED OTHERWISE

DSN.	SCALE AT A3	FILE	DRAWING
DRN.	1 : 50	19364	5.0
DRN CKD.			
APP.			
DATE 05/05/25		STAGE 2	

JosephDavid | Architecture

www.josephdavid.co.nz Ph: 0210635931 e-mail: joe@josephdavid.co.nz

PROPOSED DEVELOPMENT 13 CHEVIOT STREET



CROSS SECTION

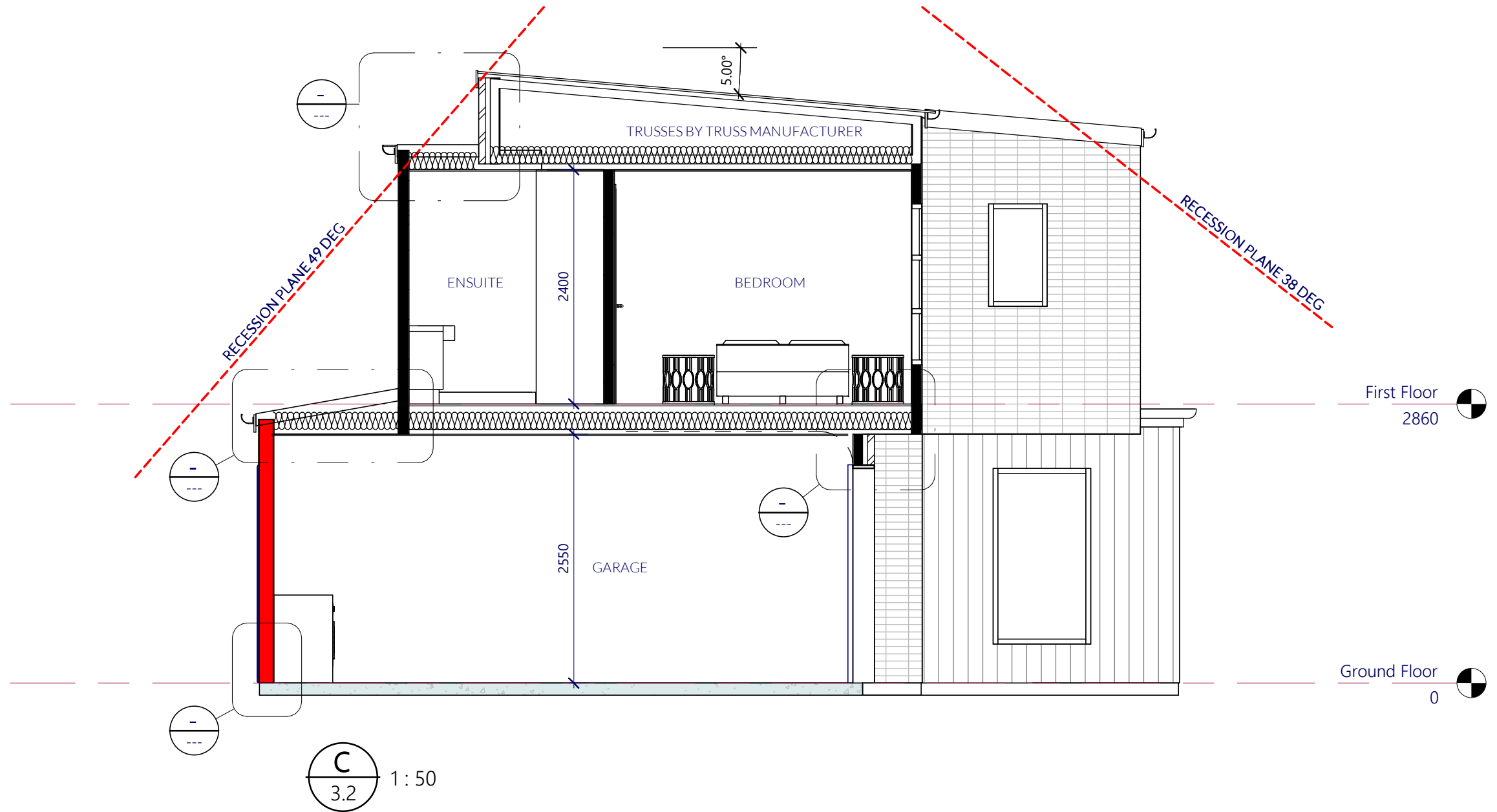
CONTRACTOR SHALL VERIFY ALL DIMENSIONS BEFORE STARTING WORK
DIMENSIONS ARE IN MILLIMETRES UNLESS STATED OTHERWISE

DSN.	SCALE AT A3	FILE	DRAWING
DRN.	1 : 50	19364	5.1
DRN CKD.			
APP.			
DATE 05/05/25		STAGE 2	

JosephDavid | Architecture

www.josephdavid.co.nz Ph: 0210635931 e-mail: joe@josephdavid.co.nz

PROPOSED DEVELOPMENT 13 CHEVIOT STREET



CROSS SECTION

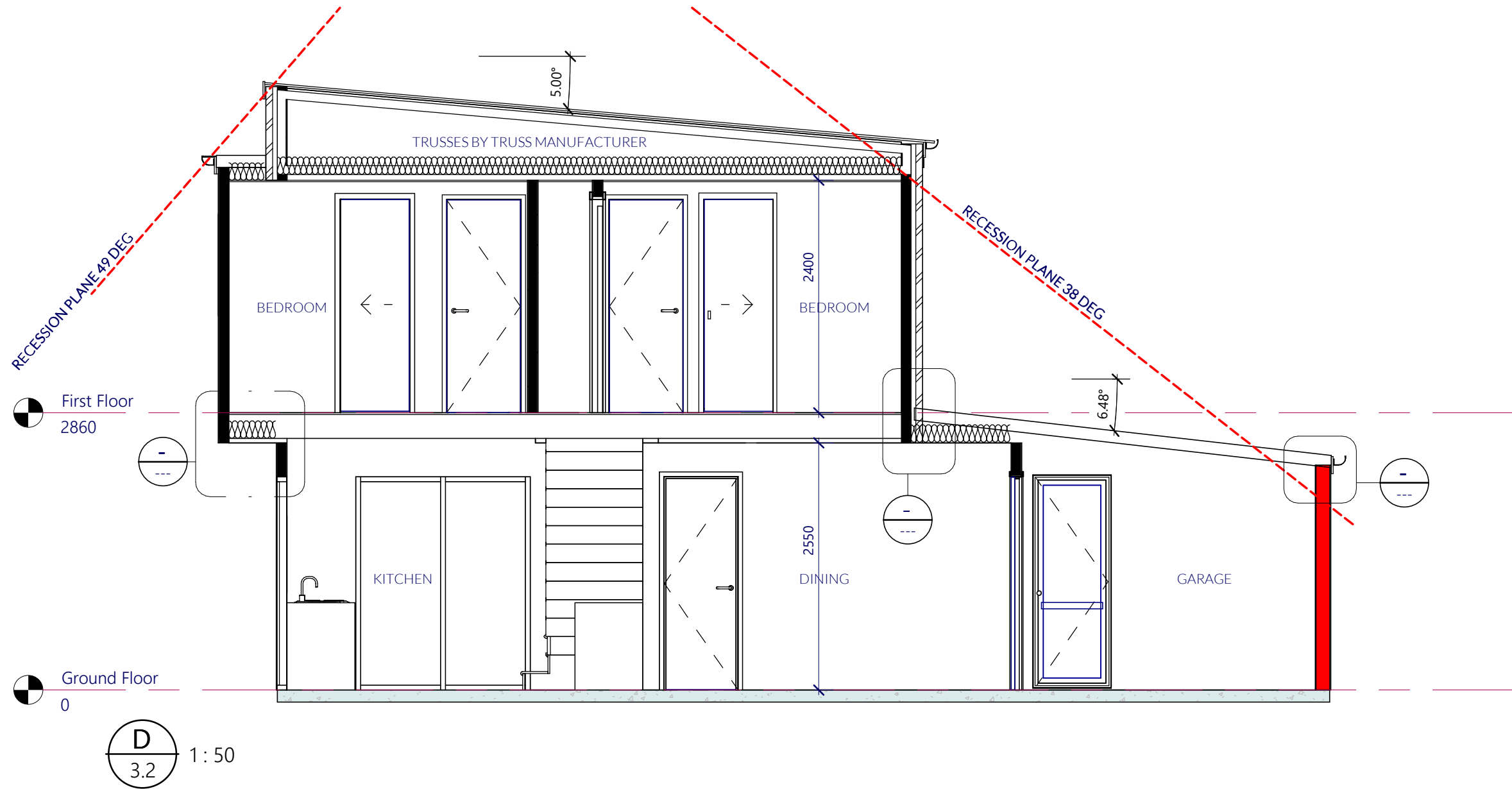
CONTRACTOR SHALL VERIFY ALL DIMENSIONS BEFORE STARTING WORK
DIMENSIONS ARE IN MILLIMETRES UNLESS STATED OTHERWISE

DSN.	SCALE AT A3	FILE	DRAWING
DRN.	1 : 50	19364	5.2
DRN CKD.			
APP.			
DATE 05/05/25		STAGE 2	

JosephDavid | Architecture

www.josephdavid.co.nz Ph: 0210635931 e-mail: joe@josephdavid.co.nz

PROPOSED DEVELOPMENT 13 CHEVIOT STREET



CROSS SECTION

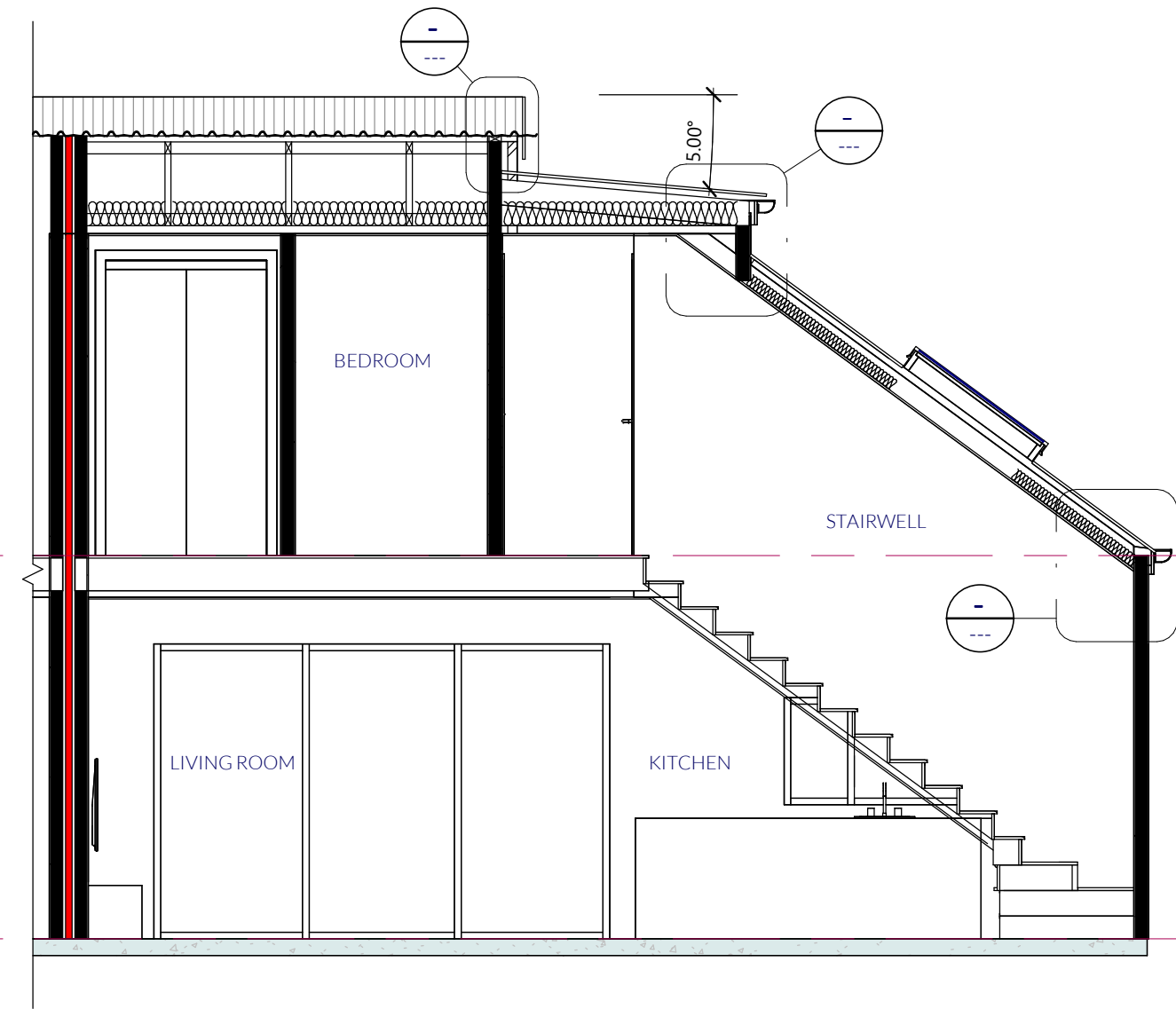
CONTRACTOR SHALL VERIFY ALL DIMENSIONS BEFORE STARTING WORK
DIMENSIONS ARE IN MILLIMETRES UNLESS STATED OTHERWISE

DSN.	SCALE AT A3	FILE	DRAWING
DRN.	1 : 50		
DRN CKD.		19364	5.3
APP.		STAGE 2	
DATE	05/05/25		

JosephDavid | Architecture

www.josephdavid.co.nz Ph: 0210635931 e-mail: joe@josephdavid.co.nz

PROPOSED DEVELOPMENT 13 CHEVIOT STREET



E
3.2 1:50

CROSS SECTION

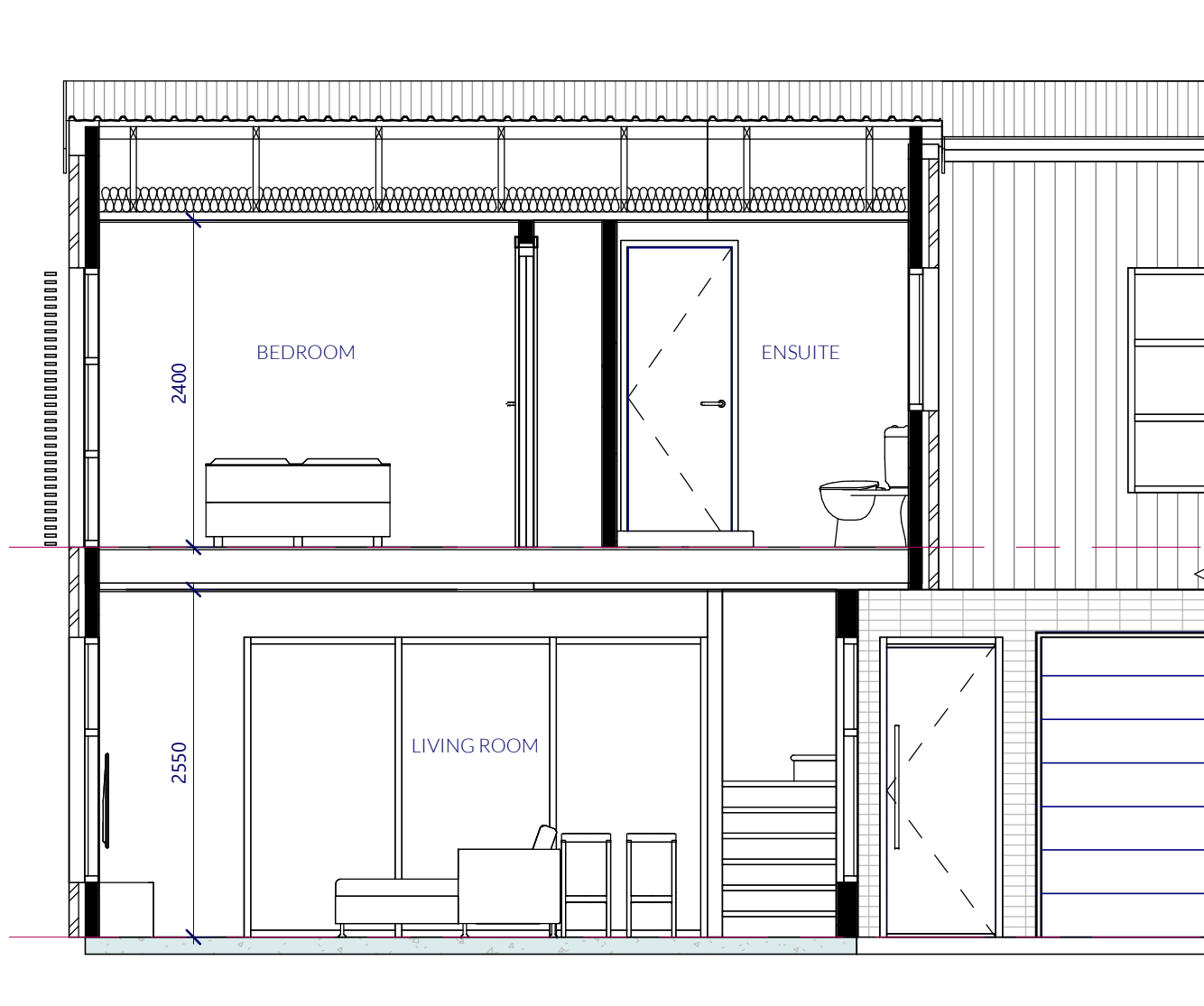
CONTRACTOR SHALL VERIFY ALL DIMENSIONS BEFORE STARTING WORK
DIMENSIONS ARE IN MILLIMETRES UNLESS STATED OTHERWISE

DSN.	SCALE AT A3	FILE	DRAWING
DRN.	1 : 50		
DRN CKD.		19364	5.4
APP.		STAGE 2	
DATE	05/05/25		

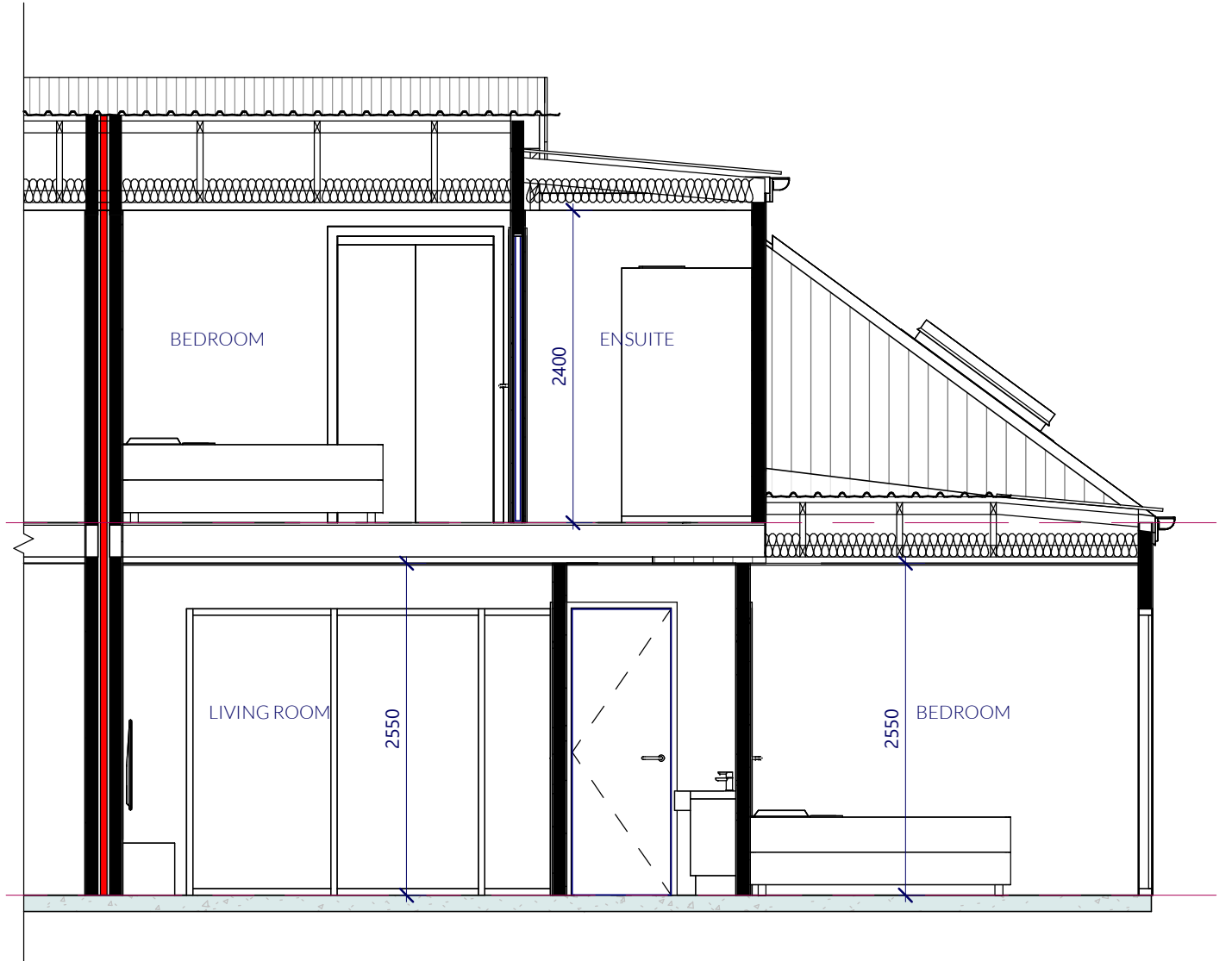
JosephDavid | Architecture

www.josephdavid.co.nz Ph: 0210635931 e-mail: joe@josephdavid.co.nz

PROPOSED DEVELOPMENT 13 CHEVIOT STREET



F
3.2 1 : 50



CROSS SECTION

CONTRACTOR SHALL VERIFY ALL DIMENSIONS BEFORE STARTING WORK
DIMENSIONS ARE IN MILLIMETRES UNLESS STATED OTHERWISE

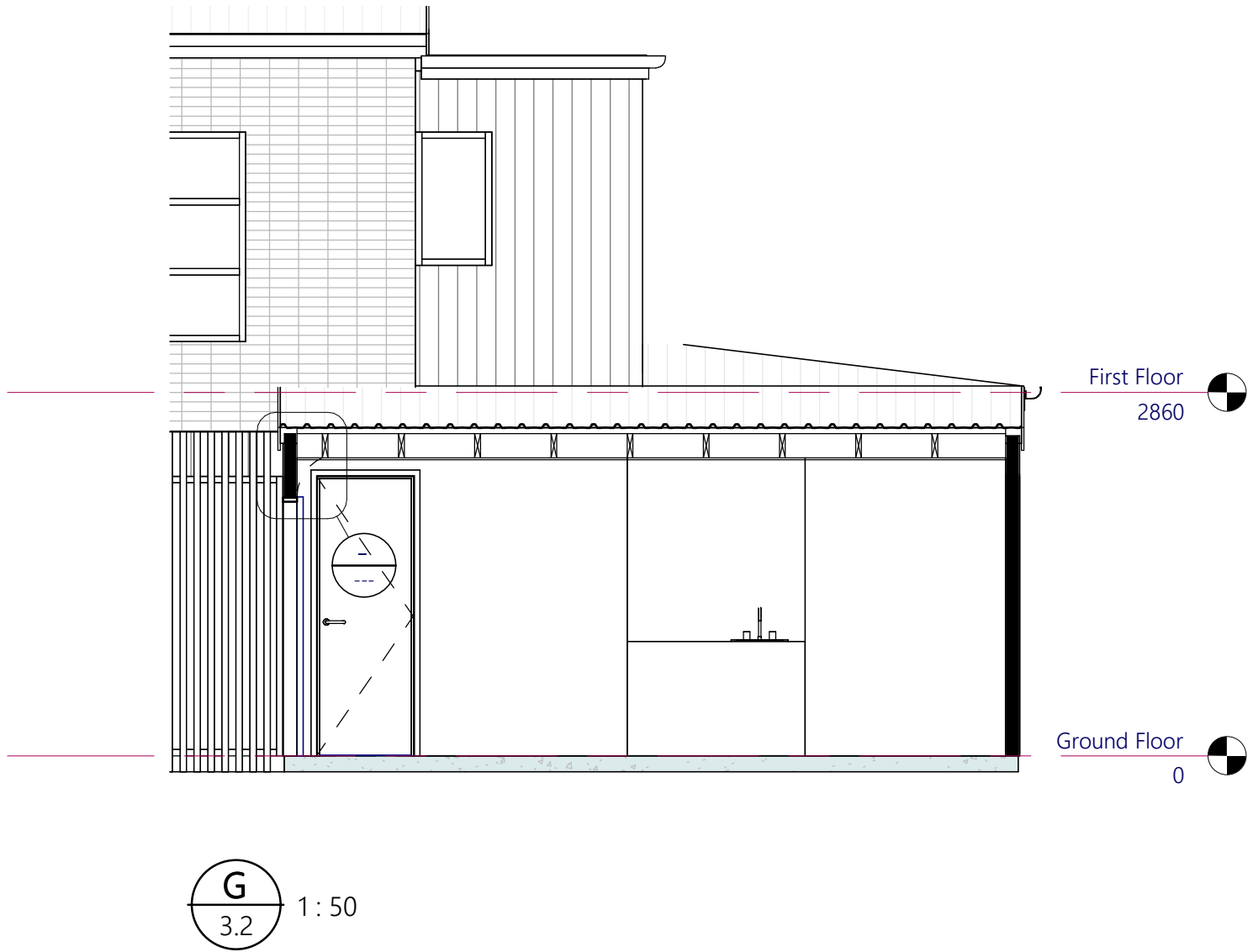
DSN.	SCALE AT A3	FILE	DRAWING
DRN.	1 : 50		
DRN CKD.		19364	5.5
APP.		STAGE 2	
DATE	05/05/25		

JosephDavid | Architecture

www.josephdavid.co.nz Ph: 0210635931 e-mail: joe@josephdavid.co.nz

PROPOSED DEVELOPMENT 13 CHEVIOT STREET

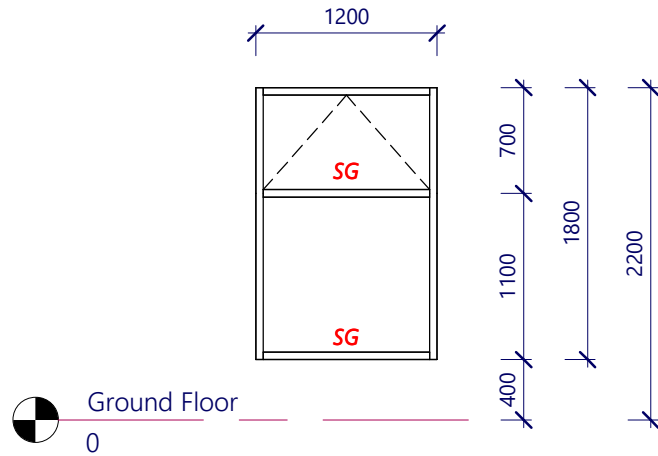
PROPOSED DEVELOPMENT 13 CHEVIOT STREET



CROSS SECTION

CONTRACTOR SHALL VERIFY ALL DIMENSIONS BEFORE STARTING WORK
DIMENSIONS ARE IN MILLIMETRES UNLESS STATED OTHERWISE

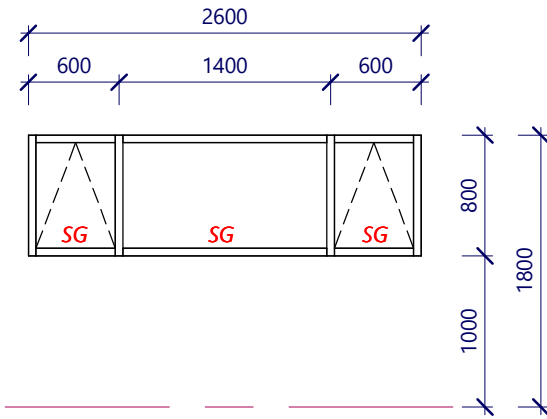
DSN.	SCALE AT A3	FILE	DRAWING
DRN.	1 : 50	19364	5.6
DRN CKD.			
APP.			
DATE	05/05/25	STAGE 2	



W01 W03 W04 W13

SILL HEIGHT - 400mm
HEAD HEIGHT - 2200mm
WIDTH - 1200mm

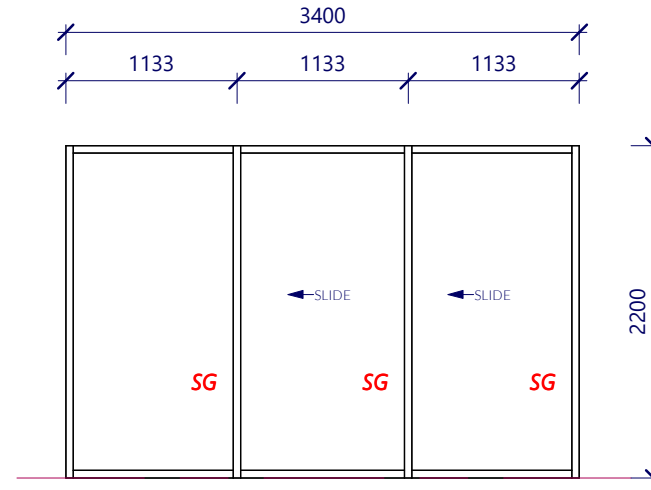
SG - DENOTES SAFETY RATED GLAZING



W02 W12

SILL HEIGHT - 1000mm
HEAD HEIGHT - 1800mm
WIDTH - 2600mm

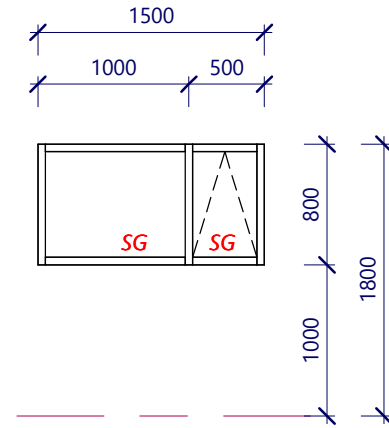
SG - DENOTES SAFETY RATED GLAZING



W05 W06 W07

SILL HEIGHT - 00mm
HEAD HEIGHT - 2200mm
WIDTH - 3400mm

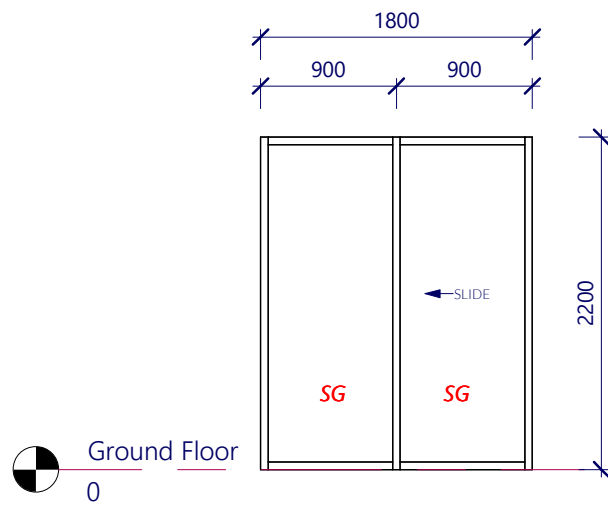
SG - DENOTES SAFETY RATED GLAZING



W08

SILL HEIGHT - 1000mm
HEAD HEIGHT - 1800mm
WIDTH - 1500mm

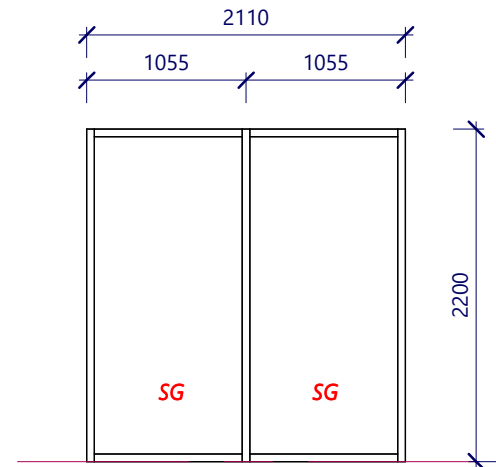
SG - DENOTES SAFETY RATED GLAZING



W09 W10

SILL HEIGHT - 00mm
HEAD HEIGHT - 2200mm
WIDTH - 1800mm

SG - DENOTES SAFETY RATED GLAZING



W11

SILL HEIGHT - 00mm
HEAD HEIGHT - 2200mm
WIDTH - 2100mm

SG - DENOTES SAFETY RATED GLAZING

WINDOW SCHEDULE

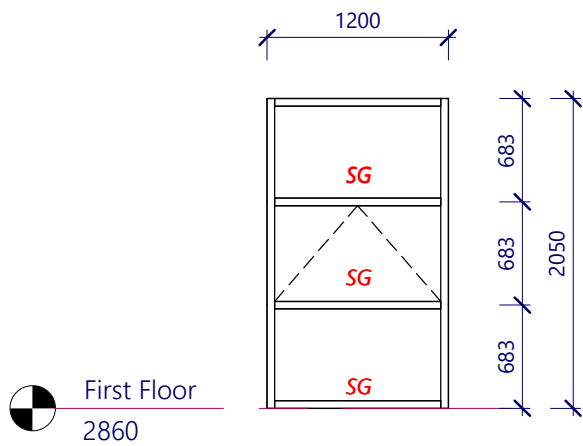
CONTRACTOR SHALL VERIFY ALL DIMENSIONS BEFORE STARTING WORK
DIMENSIONS ARE IN MILLIMETRES UNLESS STATED OTHERWISE

DSN.	SCALE AT A3	FILE	DRAWING
DRN.	1 : 50	19364	8.0
DRN CKD.			
APP.			
DATE	05/05/25	STAGE 2	

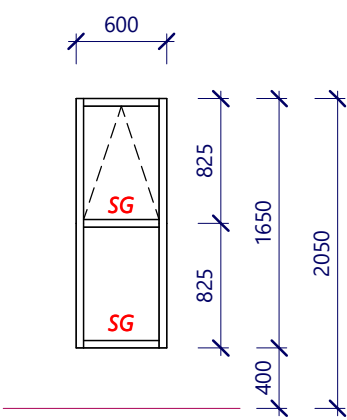
JosephDavid | Architecture

www.josephdavid.co.nz Ph: 0210635931 e-mail: joe@josephdavid.co.nz

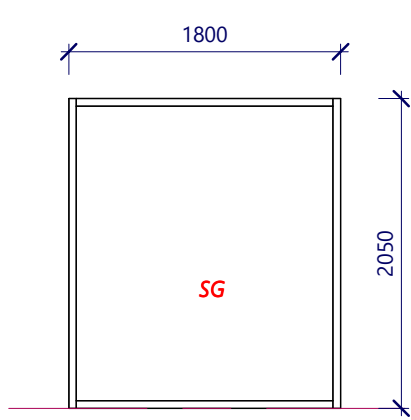
PROPOSED DEVELOPMENT 13 CHEVIOT STREET



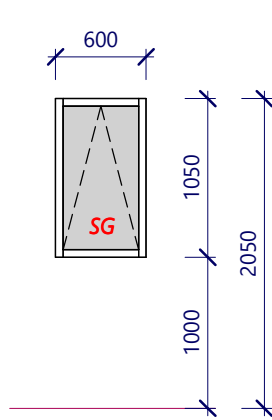
W101 W102
SILL HEIGHT - 00mm
HEAD HEIGHT - 2050mm
WIDTH - 1200mm
SG - DENOTES SAFETY RATED GLAZING



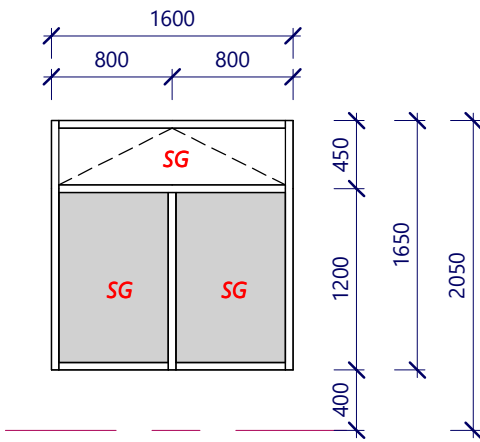
W103 W118
SILL HEIGHT - 400mm
HEAD HEIGHT - 2050mm
WIDTH - 600mm
SG - DENOTES SAFETY RATED GLAZING



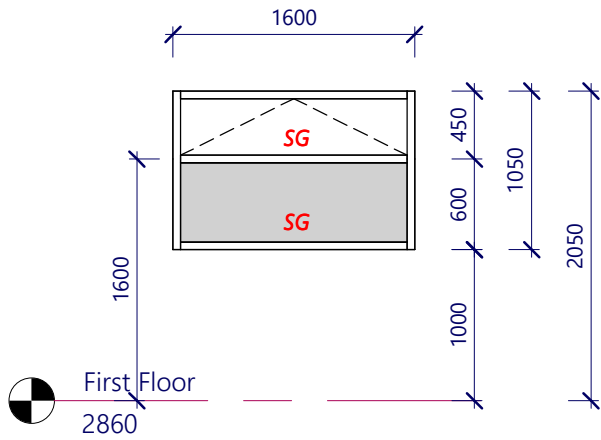
W104 W107
SILL HEIGHT - 00mm
HEAD HEIGHT - 2050mm
WIDTH - 1800mm
SG - DENOTES SAFETY RATED GLAZING



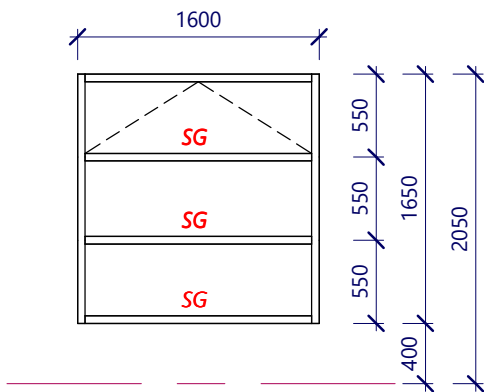
**W105 W106 W110
W111 W114 W117**
SILL HEIGHT - 1000mm
HEAD HEIGHT - 2050mm
WIDTH - 600mm
SG - DENOTES SAFETY RATED GLAZING
OBSCURE GLAZING REQUIRED



W108
SILL HEIGHT - 400mm
HEAD HEIGHT - 2050mm
WIDTH - 1600mm
SG - DENOTES SAFETY RATED GLAZING
OBSCURE GLAZING REQUIRED UP TO 1600mm



W109
SILL HEIGHT - 1000mm
HEAD HEIGHT - 2050mm
WIDTH - 1600mm
SG - DENOTES SAFETY RATED GLAZING
OBSCURE GLAZING REQUIRED UP TO 1600mm



W112 W113 W115 W116
SILL HEIGHT - 400mm
HEAD HEIGHT - 2050mm
WIDTH - 1600mm
SG - DENOTES SAFETY RATED GLAZING

WINDOW SCHEDULE

CONTRACTOR SHALL VERIFY ALL DIMENSIONS BEFORE STARTING WORK
DIMENSIONS ARE IN MILLIMETRES UNLESS STATED OTHERWISE

DSN.	SCALE AT A3	FILE	DRAWING
DRN.	1 : 50	19364	8.1
DRN CKD.			
APP.			
DATE	05/06/25	STAGE 2	

JosephDavid | Architecture

www.josephdavid.co.nz Ph: 0210635931 e-mail: joe@josephdavid.co.nz

PROPOSED DEVELOPMENT 13 CHEVIOT STREET



JosephDavid | Architecture

www.josephdavid.co.nz Ph: 0210635931 e-mail: joe@josephdavid.co.nz

PROPOSED DEVELOPMENT 13 CHEVIOT STREET

3D

CONTRACTOR SHALL VERIFY ALL DIMENSIONS BEFORE STARTING WORK
DIMENSIONS ARE IN MILLIMETRES UNLESS STATED OTHERWISE

DSN.	SCALE AT A3	FILE	DRAWING
DRN.	1 : 1		
DRN CKD.		19364	10.0
APP.		STAGE 2	
DATE	02/10/25		



3D

CONTRACTOR SHALL VERIFY ALL DIMENSIONS BEFORE STARTING WORK
DIMENSIONS ARE IN MILLIMETRES UNLESS STATED OTHERWISE

DSN. DRN. DRN CKD. APP. DATE	SCALE AT A3	FILE	DRAWING
	1 : 1	19364	10.1
02/10/25		STAGE 2	

JosephDavid | Architecture

www.josephdavid.co.nz Ph: 0210635931 e-mail: joe@josephdavid.co.nz

PROPOSED DEVELOPMENT 13 CHEVIOT STREET