

42 Harry Shaw Way
RAUMATI SOUTH

SOK



SOLD ON KĀPITI

Ownly
LICENSED REAA 2008



EXCELLENT HOME, ENVIABLE SPOT & EXCEPTIONAL VIEWS

42 HARRY SHAW WAY, RAUMATI SOUTH

 3  2  3  2  233 m²  1033 m²

Looking for a solid home with serious space and a standout view? Set in an elevated position overlooking Raumati Estate, this substantial home offers an incredible perspective on coastal life. Meticulously refreshed and lovingly maintained – this home and its sweeping views across Raumati and out to Kāpiti Island is a home like no other.

The upper level is where everyday life happens. The separate living makes the most of those epic views, flowing into the modern kitchen and dining space. All opening out onto the deck, it's the perfect spot to watch the sunset. There are 3 generously sized bedrooms and a study. The master bedroom is the star attraction, large and complete with a walk-in robe, ensuite and your very own deck with uninterrupted views. Completing this level is the family bathroom, laundry, and separate toilet.

Downstairs is where the large family room is located. This versatile space is the perfect place to send the kids when you need alone time, a media room for the family to relax, a spot for unexpected visitors, a creative space for your business or hobby – whatever you need! There is a double garage with internal access, which has a large storage nook perfect to store your bikes, tools, or toys.

Outside, there is additional off-street parking, a low-maintenance garden, and space to keep a garden without being high maintenance. The location is a winner for families. You're zoned for Raumati South School and Kāpiti College, with easy access to the Kāpiti Expressway and Transmission Gully. For weekend fun, the cycleway connecting to Coast35 is right there, the Sam's Way Tennis Court is just around the corner, and the beach is just at the end of Menin Road.

The photos and video only tell part of the story. To truly appreciate the scale, outlook, and the feel of this well-maintained home, you need to see it for yourself.

To be sold by Deadline Sale (Unless Sold Prior) on 10 September 2025 at 12 pm



PROPERTY INFORMATION

Legal

Legal Description: LOT 13 DP 87351 CT 54D/850
Council Rates: \$5,228.34
Rateable Value: \$890,000
Floor Area: 233 m²
Land Area: 1033 m²

Property Freehold

Built In: 2002
Bedrooms: 3
Bathrooms: 2
Lounges: 2
Roofing: Long Run Steel
Heating/Cooling: Heat pumps and fixed heaters
Hot Water: Gas (Reticulated)
Energy: Contact
Glazing: Aluminium
Internet: Fibre (Orcon)

Reports & Information

LIM and Council File: LIM & Council File Available
Title Available: Yes

Neighbourhood

School Zoning:
Raumati South School, Kapiti College, Our Lady of Kapiti School, Te Ra School

Water & Sewage: Mains
Storm Water: Mains

Chattels

Auto Garage Door With 2 Remotes, Window Treatments, Clothesline, Dishwasher, Electric Oven, Electric Cooktop, Bathroom Extractor Fans (2), Fixed Floor Coverings, Heated Towel Rails (2), Heat Pumps (2) With Remote, Infinity Water Heating System, Light Fittings, Rangehood, Security System (Unmonitored), Smoke Detectors (5), Waste Disposal, European Heaters (Fixed), Wood Burner, Garage Shelving, Firewood, Hose, Water Barrel

Not Included Chattels

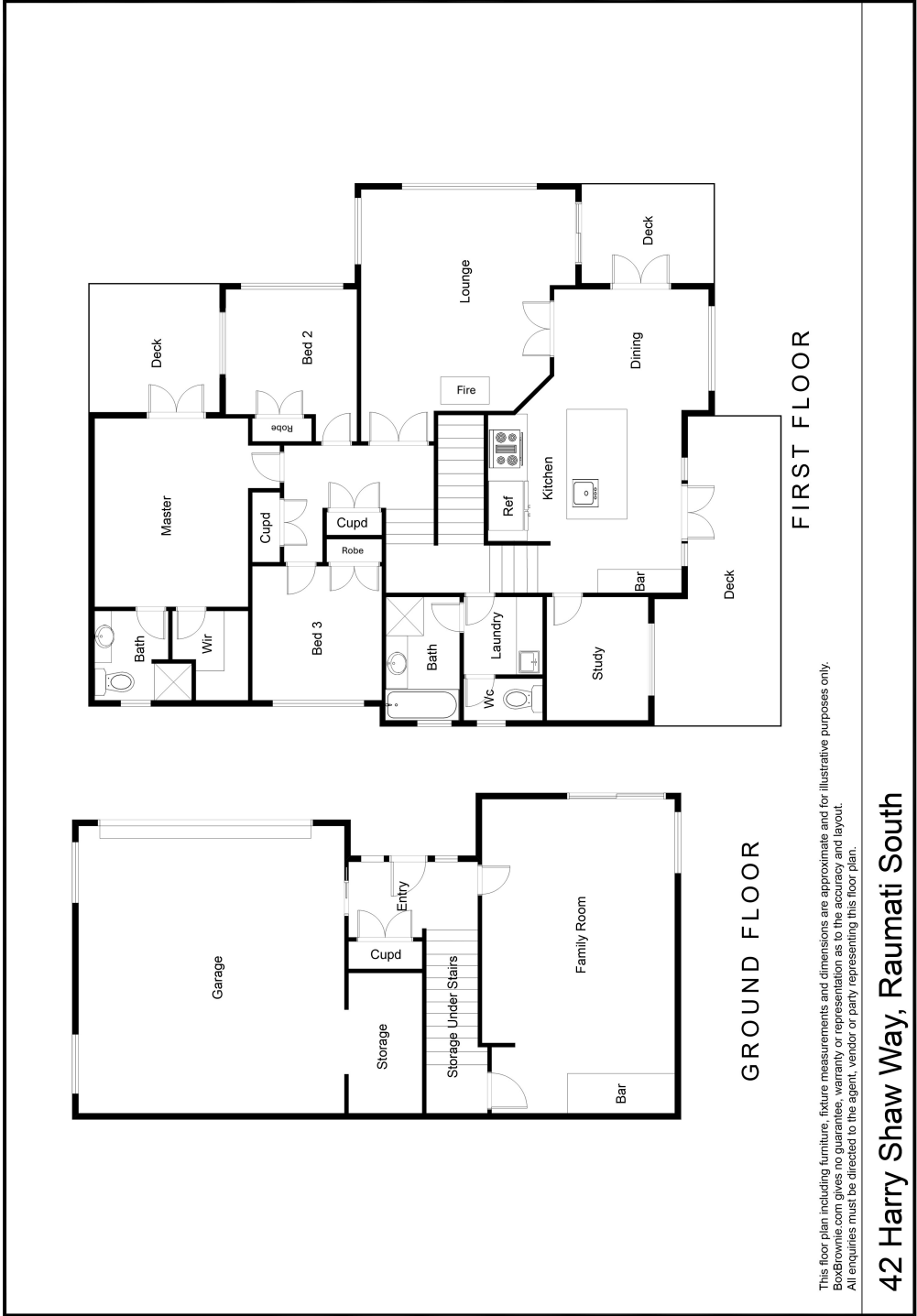
Fridges



sok



FLOOR PLAN



NOTES





SOLD ON KĀPITI

A local Real Estate Team serving the good people on the Kāpiti Coast. Our number one goal is to provide the best possible customer experience for our awesome clients.

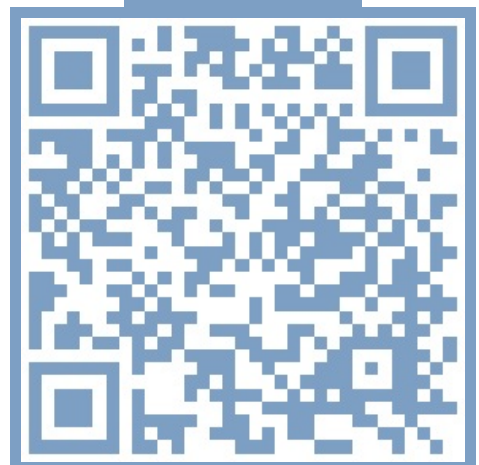
Having viewed this property you will receive an automatic email containing the properties file, please be aware this may go to your junk.

If you have further interest in this property, please reach out to one of our team ASAP so we can assist you with the next steps.

Karl Matakatea & Zoe Degotardi

📞 0800 52 71 81
✉️ hello@soldonkapiti.co.nz
🌐 soldonkapiti.co.nz

SCAN ME



Interested to know what your home is worth? Contact us for a no obligation property appraisal today.