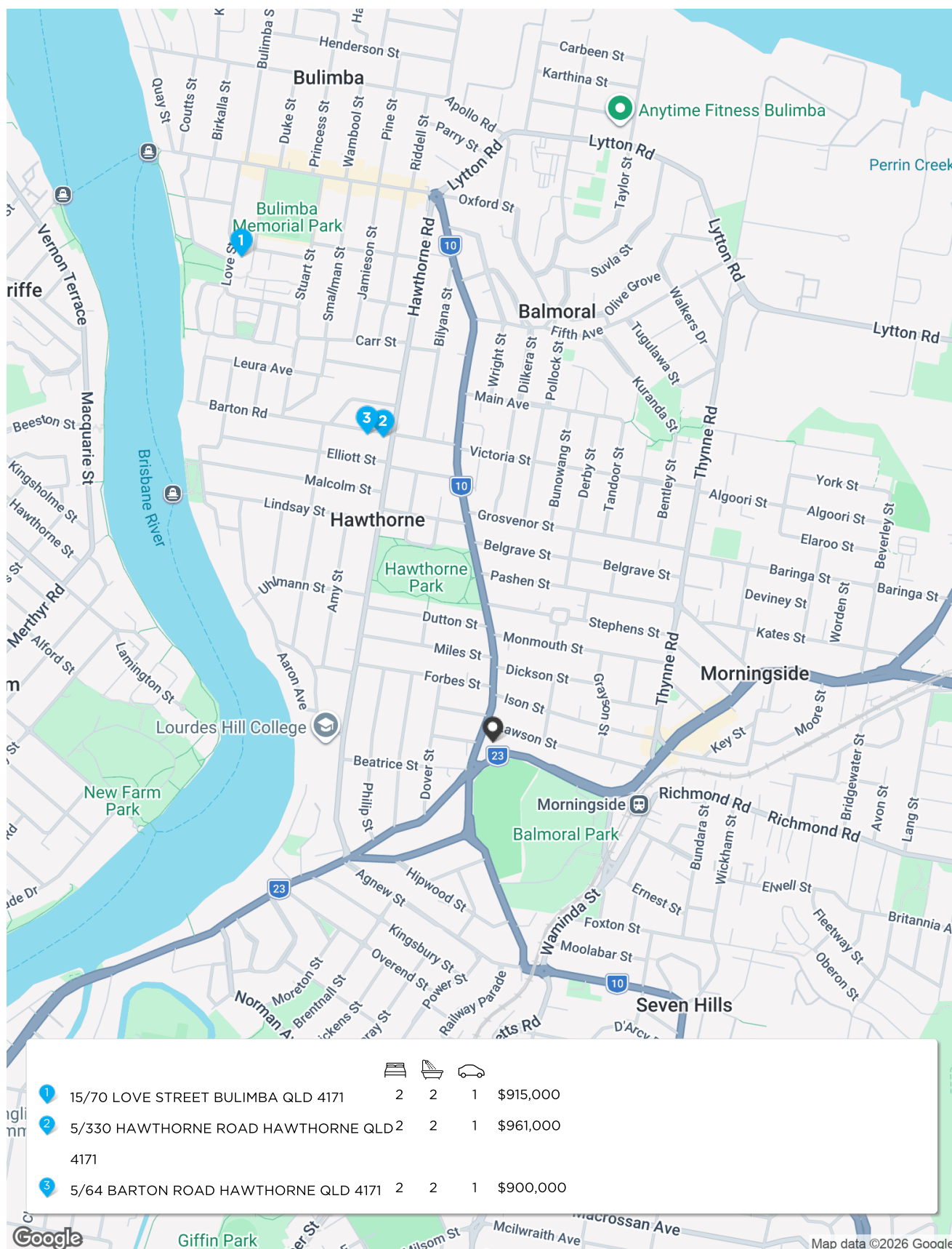


# Comparables Map: Sales



\* This data point was edited by the author of this CMA and has not been verified by Cotality

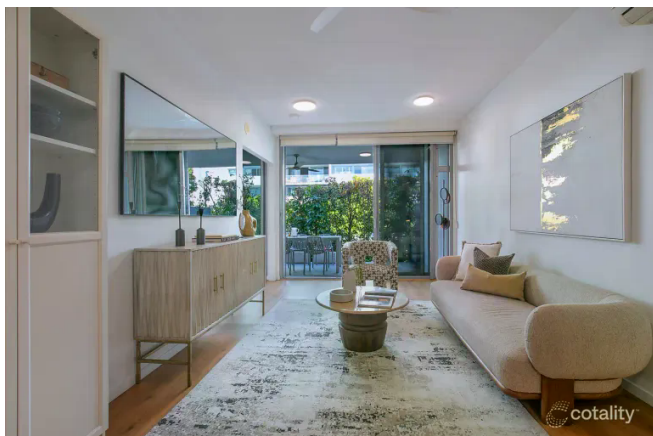
# Comparable Sales

1 15/70 LOVE STREET BULIMBA QLD 4171

Sold Price

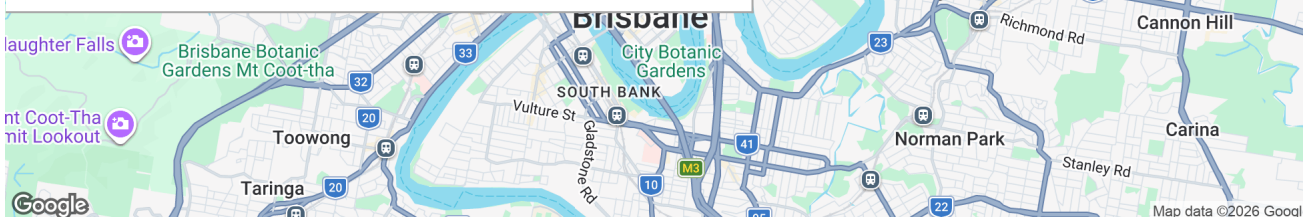
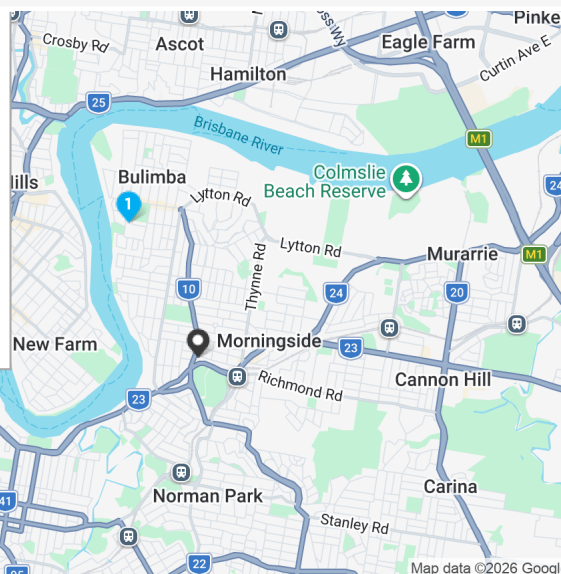
\$915,000

2 2 1 98m<sup>2</sup> 67m<sup>2</sup>



## Property Insights

Sold Date 29-Oct-25 Distance 1.9km  
DOM 57 days Year Built 2008  
First Listing  
Best Offers By Tues 30th Sep 4pm  
Last Listing  
Under Contract



RS = Recent sale UN = Undisclosed Sale \* This data point was edited by the author of this CMA and has not been verified by Cotality

# Comparable Sales

**2** 5/330 HAWTHORNE ROAD HAWTHORNE QLD 4171 **Sold Price** **RS \$961,000**

2 2 1 128m<sup>2</sup> 128m<sup>2</sup>



**5/330 HAWTHORNE ROAD,  
HAWTHORNE**

INTERNAL AREA 72 sqm  
EXTERNAL AREA 50 sqm  
TOTAL BUILDING AREA 122 sqm approx.

This plan is for illustrative purposes only. All areas, dimensions and fittings are approximate. Plants are decorative only. Floor Plan by Listing Agents.



## Property Insights

Sold Date	06-Jan-26	Distance	1.12km
DOM	19 days	Year Built	1998
First Listing			
Best Offers by 12th Jan if not sold prior			
Last Listing			
Best Offers by 6th Jan - if not prior			



RS = Recent sale UN = Undisclosed Sale \* This data point was edited by the author of this CMA and has not been verified by Cotality



# Comparable Sales

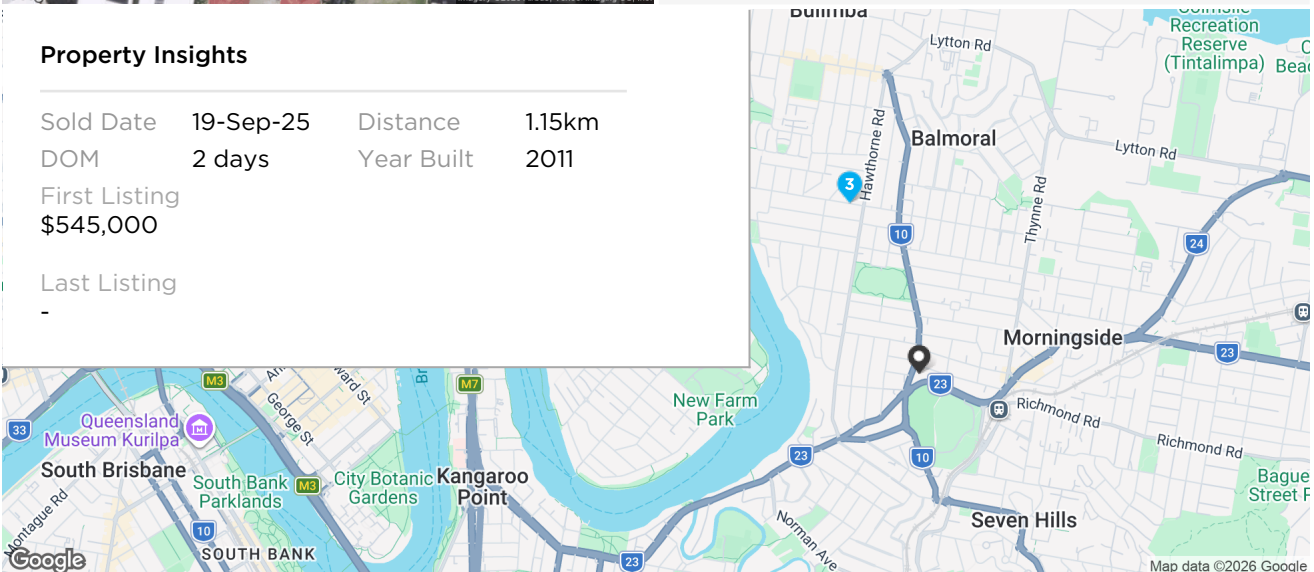
3 5/64 BARTON ROAD HAWTHORNE QLD 4171 Sold Price \$900,000

2 2 1 126m<sup>2</sup> 86m<sup>2</sup>



## Property Insights

Sold Date	19-Sep-25	Distance	1.15km
DOM	2 days	Year Built	2011
First Listing	\$545,000		
Last Listing	-		



RS = Recent sale UN = Undisclosed Sale \* This data point was edited by the author of this CMA and has not been verified by Cotality

## Disclaimer

---

Based on or contains data provided by the State of Queensland (Department of Resources) 2026. In consideration of the State permitting use of this data you acknowledge and agree that the State gives no warranty in relation to the data (including accuracy, reliability, completeness, currency or suitability) and accepts no liability (including without limitation, liability in negligence) for any loss, damage or costs (including consequential damage) relating to any use of the data. Data must not be used for direct marketing or be used in breach of the privacy laws; more information at [www.propertydatacodeofconduct.com.au](http://www.propertydatacodeofconduct.com.au)

The Appraisal Amount contained in the report may have been manually provided by the Agent; or may be based on an automated valuation model estimate provided by Cotality ('AVM Estimated Value'). AVM Estimated Values are current at the date of the publication only. It is computer generated and is not a professional appraisal of the subject property and should not be relied upon in lieu of appropriate professional advice. The accuracy of the methodology used to develop the AVM Estimated Value, the existence of the subject property, and the accuracy of the AVM Estimated Value and all rule sets provided are estimates based on available data and are not guaranteed or warranted. Cotality excludes all liability for any loss or damage arising in connection with the Appraisal Amount and/or AVM Estimated Value.

The Cotality Data provided in this publication is of a general nature and should not be construed as specific advice or relied upon in lieu of appropriate professional advice. While Cotality uses commercially reasonable efforts to ensure the Cotality Data is current, Cotality does not warrant the accuracy, currency or completeness of the Cotality Data and to the full extent permitted by law excludes all loss or damage howsoever arising (including through negligence) in connection with the Cotality Data.