



# PARK LANE

418 APPLEBY HIGHWAY & 4 LANSDOWNE ROAD, APPLEBY & FLOWER FARM BUSINESS



418 APPLEBY HIGHWAY & 4 LANSDOWNE ROAD, APPLEBY  
& FLOWER FARM BUSINESS

---

# Business is Blooming

A rare opportunity to secure a thriving flower farm, two dwellings, and a deeply liveable lifestyle, underpinned by proven income and long-term land value in sought-after Tasman.

Held across two titles and sold together, this established offering includes 418 Appleby Highway, 4 Lansdowne Road, and The Flower Farm. A profitable, fully operational business with over a decade of success. The sale reflects a family relocation only; the business itself is flourishing.

Set within productive, well-established grounds, the operation is fully consented for commercial use and comprehensively equipped, including bore water, dam share, glasshouses, sheds, chillers, and supporting infrastructure. Everything is in place for a seamless transition, whether you choose to be hands-on or install management and step back.

Two dwellings provide genuine flexibility: live on site, accommodate staff or management, or structure a model that balances lifestyle with income. Importantly, the current owners were not lifelong flower farmers, reinforcing how accessible and adaptable this operation is for families, investors, and new entrants alike.

This is an offering that appeals across multiple buyer profiles, lifestyle purchasers seeking meaning and income, families wanting a business with structure, investors drawn to land-backed yield, and commercial growers looking for an established platform.

Enquiries over \$2,750,000

A profitable operation supported by land and established infrastructure.



DOWNLOAD  
INFORMATION PACK

# House One

|            |        |
|------------|--------|
| BEDROOMS   | 3      |
| BATHROOMS  | 2      |
| FLOOR AREA | 136m2  |
| LAND       | 5360m2 |

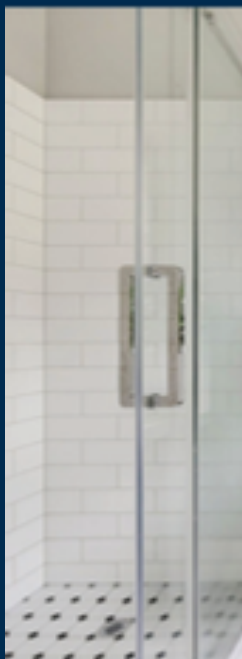
## Legal & Council

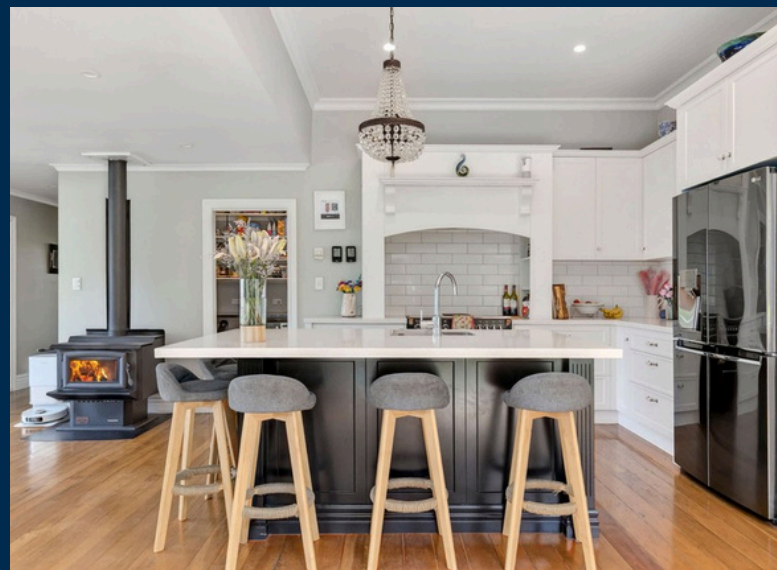
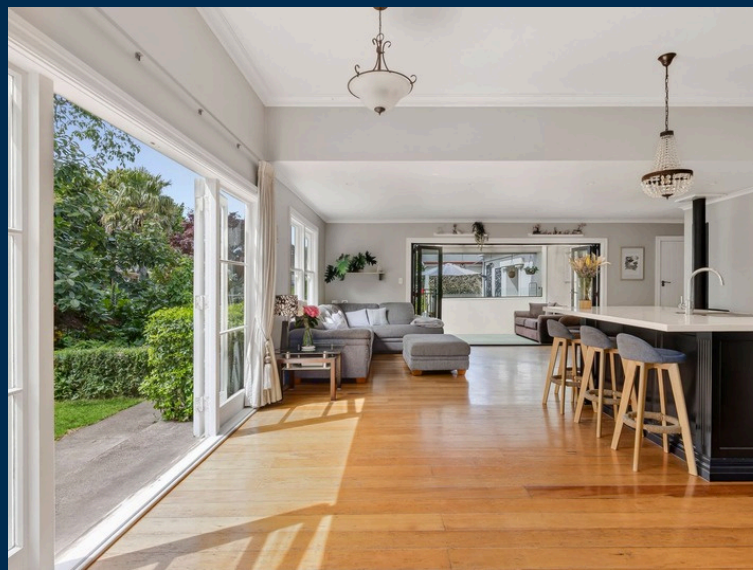
### LEGAL DESCRIPTION

|                      |   |
|----------------------|---|
| LOCATION             | 418 Appleby Highway, Appleby                  |
| LEGAL DESCRIPTION    | LOT 1 DP 14174 PT SEC 191<br>WAIMEA EAST DIST |
| CERTIFICATE OF TITLE | NL59/114 NL9A/623                             |
| ESTATE               | Freehold                                      |
| LAND AREA            | 5,360 m2 (more or less)                       |

### COUNCIL & RATES

|                       |                         |
|-----------------------|-------------------------|
| TERRITORIAL AUTHORITY | Tasman District Council |
| ZONE                  | Rural Industry Zone A   |
| RATING VALUATION      | \$1,250,000             |
| RATES                 | \$4,208.84              |





## PROPERTY INFORMATION - HOUSE TWO

---

# House Two

|            |                            |
|------------|----------------------------|
| PRICE      | ENQUIRIES OVER \$2,750,000 |
| BEDROOMS   | 3                          |
| BATHROOMS  | 2                          |
| FLOOR AREA | 156m2                      |
| LAND       | 3856m2                     |

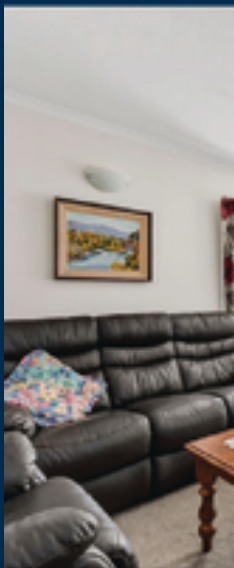
## Legal & Council

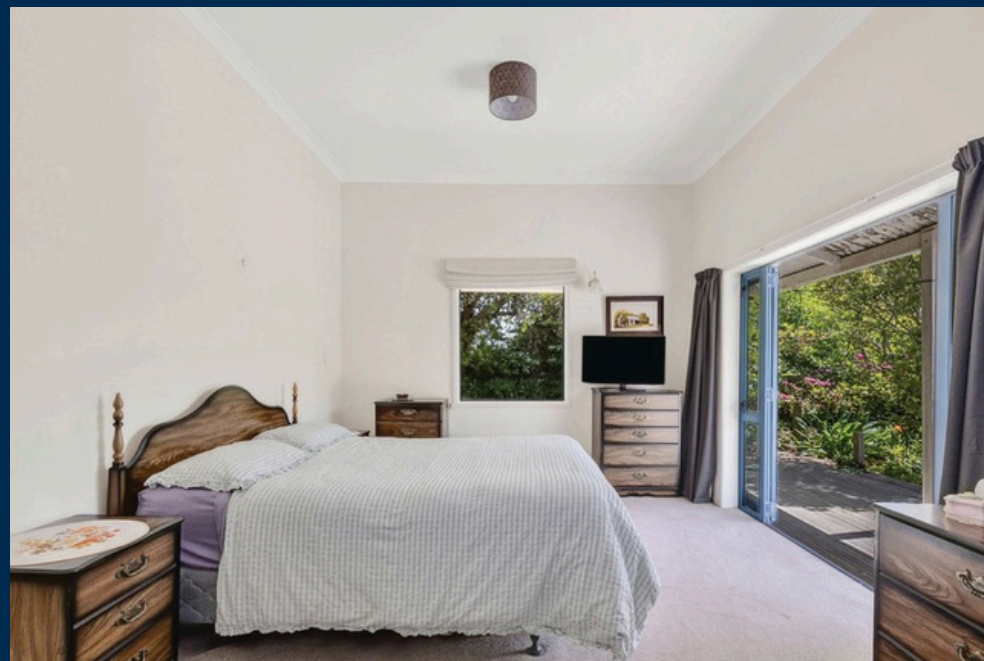
### LEGAL DESCRIPTION

|                      |  |
|----------------------|--|
| LOCATION             | 4 Lansdowne Road, Richmond               |
| LEGAL DESCRIPTION    | PART SECTION 191 WAIMEA<br>EAST DISTRICT |
| CERTIFICATE OF TITLE | 59/111                                   |
| ESTATE               | Freehold                                 |
| LAND AREA            | 3,856 m2 (more or less)                  |

### COUNCIL & RATES

|                       |                         |
|-----------------------|-------------------------|
| TERRITORIAL AUTHORITY | Tasman District Council |
| ZONE                  | Rural Industry Zone A   |
| RATING VALUATION      | \$820,000               |
| RATES                 | \$3,075.79              |







418 APPLEBY HIGHWAY & 4 LANSDOWNE ROAD, APPLEBY  
& FLOWER FARM BUSINESS

---

# The Flower Farm

The Flower Farm is a well-established wholesale and retail business with over 20 years of operation across the Nelson–Tasman region. The current owners acquired the business nearly five years ago and have since invested significantly in infrastructure, production capability and customer growth, resulting in a robust, year-round operation with strong turnover and a loyal wholesale and retail following.

The farm comprises approximately 2,700sqm of growing area, including tunnel houses, crop cover houses and glass houses. Notably, it is the only commercial cut-flower tulip producer in the South Island, delivering strong winter returns. Glass houses support hydroponic, year-round production of lilies and roses, with automated feeding and irrigation, recycled water run-off, and winter heating via a coal-fired boiler.

Infrastructure is extensive and well considered, including two three-bay sheds, a large workshop, multiple chillers, freezers and generous parking, with dual access from Appleby Highway and Lansdowne Road. Reliable bore water supplies irrigation needs, complemented by a share in the Waimea Dam water scheme, providing long-term security.

The retail operation is supported by a substantial on-site shop with ample customer parking, chiller room, office, staff facilities and outdoor patio, completing a comprehensive and future-proofed business offering.

[THE FLOWER FARM WEBSITE](#)

[THE FLOWER FARM FACEBOOK](#)

[THE FLOWER FARM INSTAGRAM](#)

# New Opportunities to Bloom

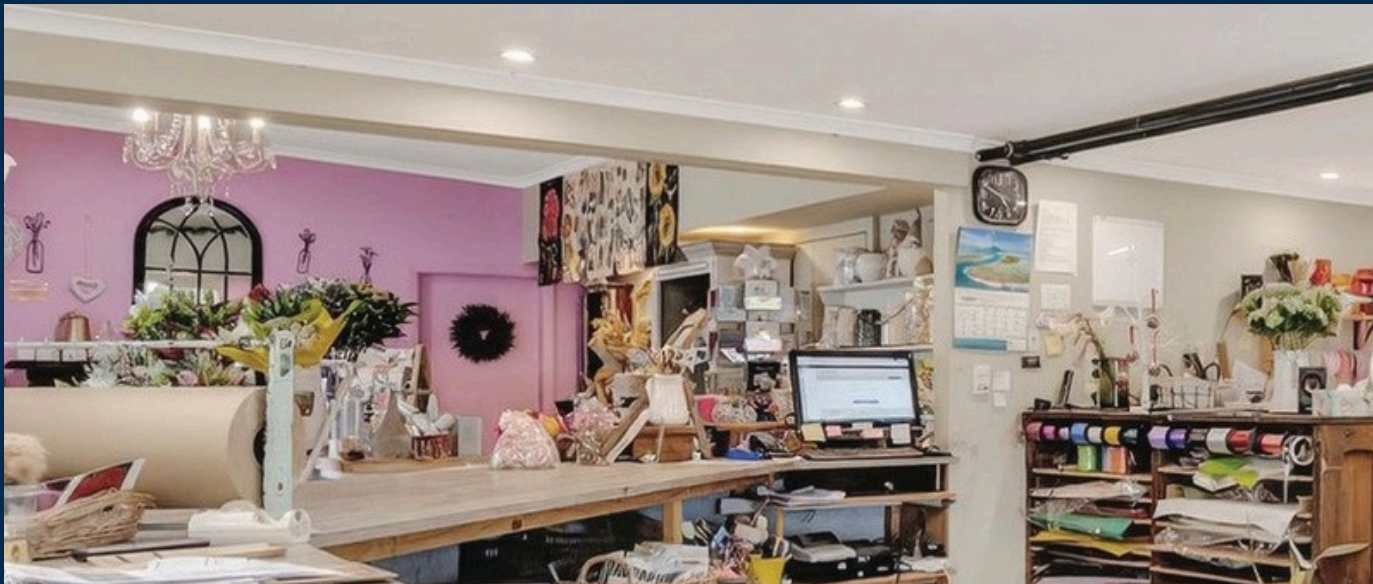
- Weddings and Events
- Flower Subscriptions
- Coffee/Real Fruit Ice Cream cart
- Hosting and running flower arranging workshops
- Eco-tourism/Farm Tours
- Contract Growing
- UFG-Flower Auction
- Pick Your Own
- Edible Flowers
- Freeze Dried Rose Petals

# What We Grow

- Roses
- Oriental and Asiatic Lillies
- Tulips
- Limonium
- Gypsophila
- Stock
- Snapdragons
- Dahlia
- Eucalyptus
- Magnolia
- Hypericum
- Birds of Paradise
- Sunflowers
- And much more







## Customers

The current owners have successfully diversified The Flower Farm into a balanced 50/50 wholesale and retail operation, while maintaining strong in-house production of roses, lilies and tulips. The introduction of part-time florists and an expanded product range has driven retail growth, while broader farm-grown and sourced offerings have strengthened wholesale sales. The business supplies Foodstuffs-approved supermarkets, minimarkets, florists and dairies throughout the South Island, supported by established freight relationships. Prominently positioned on the corner of Appleby Highway and Lansdowne Road, the attractive retail premises benefit from excellent visibility, generous parking and ongoing growth through a strong digital and social media presence.

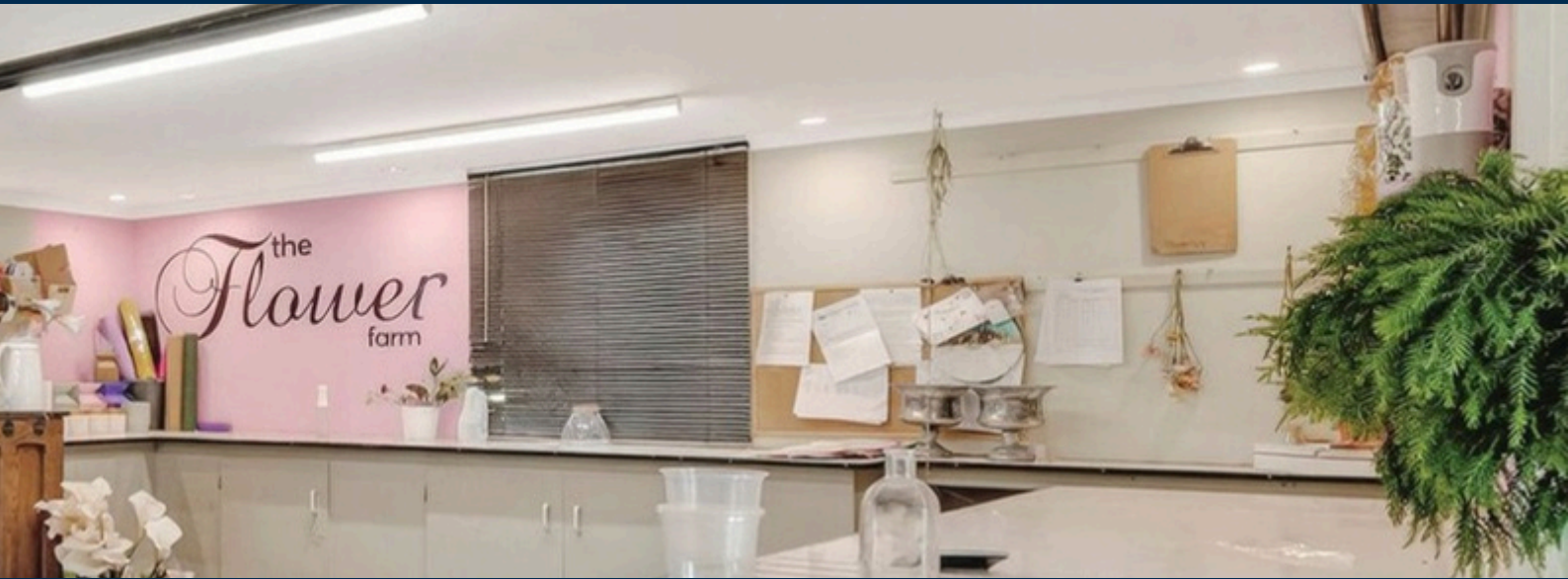
## Staff

The farm employs a skilled and dedicated team of eight staff across a range of year-round roles, supported by seasonal and project-based workers as required. There is also the opportunity to accommodate farmstay workers in exchange for food and board, providing additional operational flexibility.

### PERMANENT STAFF

1 x Farm Manager/Owner - Full time  
1 x Floriculture Specialist - Full time  
1 x Retail/flower processing/florist/customer support - 24 hours p/w  
1 x Floriculture assistant - 12-16 hours p/w

1 x Florist/Retail 18 hours p/w  
1 x Casual flower processor/retail 4 hours p/w  
1 x Casual farm hand 8 hours p/w  
1 x Administration assistant 4 hours p/w



# Buildings, Plant, Equipment & Land

The farm occupies a prominent corner site on Appleby Highway and Lansdowne Road, comprising approximately 9,216sqm of flat land across two titles at 418 Appleby Highway and 4 Lansdowne Road. An additional one-acre block is leased long-term from St Albans Anglican Church, with the Church supportive of the lease continuing.

Infrastructure is extensive and well established, including a retail shop, processing shed, office, fertigation and pump sheds, multiple workshops and garages, water storage tanks, two walk-in chillers and two walk-in freezers.

## SHOP

- Customer parking for six vehicles
- Light-filled, inviting retail shop
- Dedicated florist workspace
- Flower processing area
- Walk-in chiller for storage and customer access
- Office for accounts and administration
- Kitchenette
- Staff shower and toilet facilities
- Covered outdoor staff break area
- Staff parking
- Flower drying room
- POS system and till

## PROPERTY INFORMATION - THE FLOWER FARM

---

### ROSE HOUSE

- 40x36 metre glasshouse
- Automated irrigation system
- Automated heating system connected to boiler
- Automated ventilation system
- Automated shading system with new shade cloth
- Automated misting/cooling system
- Timer triggered lighting system
- Over 6,400 individual rose plants (over 4,400 new rose plants) plus Limonium, Solidago, Delphinium, Frangipani and other varieties
- Propagation bench
- New irrigation lines and drippers
- New weed mat and floor covering
- New high-pressure spray pump, hose and 200ltr tank
- Drainage sump for collecting fertigation run-off and pump to send it to Alstromeria house water tank
- 100+ spare sheets of precut glass panels

### ASIATIC HOUSE

- 16x7metre tunnel house (glass/plastic)
- Automated irrigation system
- Automated heating system connected to boiler
- Manual ventilation system
- Used for growing Asiatic Lilies and Delphinium among other small varieties

### CHURCH HOUSE

- 20x7 metre tunnel house (plastic)
- Automated irrigation system
- Manual ventilation system
- Brand new roof plastic
- Used for growing Snapdragons, Statice, Stock, Bells Of Ireland and other varieties

### ORIENTAL HOUSE

- 27x7metre tunnel house (glass/plastic)
- Automated irrigation system
- Automated heating system connected to boiler
- Manual ventilation system
- Timer triggered lighting system
- New plastic side and half roof
- Used for growing Oriental Lilies

### ALSTROMERIA HOUSE

- 29 x 7 metre tunnel house (newly constructed)
- Irrigation system and new water pump (manual trigger)
- Water storage tank
- Established and vast Alstromeria crop

### TULIP HOUSE

- 28 x 24 metre tunnel house (plastic)
- Irrigation system (manual trigger)
- Fertiliser mixing system into irrigation
- Used for growing Tulip in winter, Asiatic Lilies in summer and Snapdragons, Scabiosa, Nigella and many other varieties

## OUTDOOR GROWING SPACES

Variety of beds and plantations most with installed irrigation

- Eucalyptus
- Birds Of Paradise
- Hypericum
- Gypsophila
- Hydrangea
- Moulenbecia
- Dahlia
- Magnolia
- Twisted Willow
- Sunflowers
- Etc

## PUMP SHED

- 1 x bore and pump metered for all of the irrigation requirements
- 1 x bore and new pump for the house one supply

## CHEMICAL SHED

- Safe containment and control for all herbicides, insecticides, fungicides, cleaning products and other chemical products
- PPE for spraying storage
- Spray records and documentation

## FERTIGATION SHED

- Automated irrigation and fertiliser dosing system
- 2 x 1000ltr tanks for holding fertiliser mix with mixing motors
- 2 x new fertiliser injection pumps - adjustable
- 1 x new main water pump
- Irrigation dosing controller - up to 8 zones triggered by solar integrator
- Irrigation and fertiliser testing and monitoring equipment

## DRIVE-IN TULIP BULB FREEZER

- Used for providing pre-planted Tulips their "winter" season during NZ summer
- 14m x 6.5m x 2.6m
- New lighting
- Two large sliding doors to drive forklift or truck into freezer
- Spare RLZ 650 Refrigeration Compressor

## WALK-IN LILY BULB FREEZER

- Used for lily bulb storage before weekly planting
- 6m x 4m x 2.2m
- New refrigeration unit

## WALK-IN OVERFLOW CHILLER

- Overflow storage for extra flowers
- 4m x 2m x 2.2m
- New refrigeration unit

## WALK-IN SHOP CHILLER

Split into two zones for retail customers and shop storage

- 7.5m x 4m x 2.1m
- New refrigeration unit
- New lighting

## BOILER AND COAL BUNKER

- Recently installed and upgraded boiler
- Brand new hot water circulation pump

## WORKSHOP

- Farm workshop for tool storage
- Benches
- Air Compressor
- Concrete floor

## PROPERTY INFORMATION - THE FLOWER FARM

---



### OPEN FRONT SHED

- Two bay open front shed for farm vehicle storage
- Spare Irrigation supplies

### TWO BAY GARAGE

- One roller door
- One open front
- Benches
- Concrete flooring
- Vehicle storage

### EXTRA PLANT, EQUIPMENT AND BUILDINGS

- Propagation Shed with grow lights
- Farm implement shed
- Woodshed
- Daihatsu Hijet delivery truck with removable canopy (20,000km)
- Isuzu Elf farm truck
- Massey Ferguson 165 Tractor with loader bucket
- Komatsu Forklift
- Ride-On Lawnmower
- Pallet Trolley
- 2 x Flower carts
- Air compressor
- Wheel barrows
- Water Blaster
- Leaf blower/sucker
- Chainsaw
- Variety of hand/power tools
- Spare irrigation pipes, connectors, fittings etc
- Spare boiler circulation pump
- Approx 3000 crates for Tulip/Lilies etc
- Cardboard shipping cartons (S,M,L)
- Buckets 250



## Stock

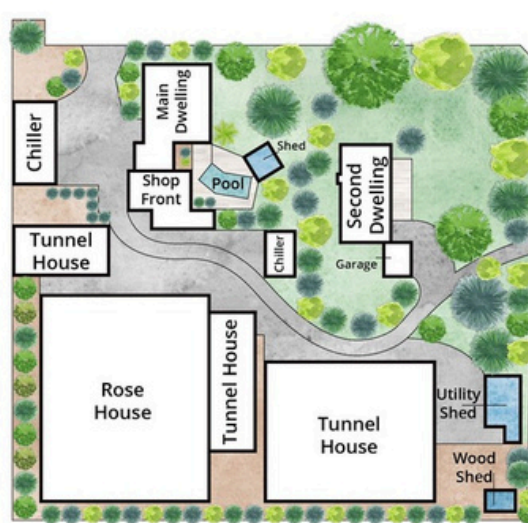
The stock is in constant flux and total amounts and value will be calculated more accurately at the time of any potential agreement.

- Approx 8,000 Lily bulbs stored in freezer for weekly succession planting
- Approx 150,000 pre-planted Tulip bulbs
- Shop giftware
- Floristry supplies
- Fertiliser
- Herbicides, Insecticides and Fungicides

## Accounts

Accounts and revenue figures prepared by Browns and Associates Chartered Accountants will be provided on request once a Non-Disclosure Agreement has been submitted by interested parties.

# FLOOR PLAN



FOR VISUAL PURPOSE ONLY

Drawings are approximate only and to be used for visual representations only.

ABOUT US

---

# PARK LANE

Park Lane delivers premium expertise, considered care, and a level of dedication reserved for Nelson's finest homes. Success in the upper-tier market requires focus and specialist capability, and we operate with a standard of execution that reflects the expectations of discerning clients and the calibre of the properties we represent.

Sharron, Brand Owner and Luxury Property Advisor, leads the business with a results-driven, client-first philosophy. Her career is defined by securing outcomes that genuinely elevate her clients' quality of life. With refined market insight, an intuitive understanding of premium buyer behaviour, and a disciplined approach to strategy and negotiation, she ensures every property is positioned with purpose and precision.

Sharron's process is meticulously tailored, designed to navigate the complexities of high-value real estate and maximise the potential of each home she brings to market.

At Park Lane, clients benefit from a curated, boutique approach underpinned by forward-focused marketing, specialist knowledge of the premium segment, and an unwavering commitment to quality at every touchpoint.

Your property isn't simply listed, it's showcased in a way that amplifies its strengths and outperforms in-market expectations.

Enquire with Park Lane today to activate a more sophisticated and strategically led property journey.



## Sharron Wetere

LUXURY PROPERTY ADVISOR

021 350 106  
sharron@park-lane.co.nz  
park-lane.co.nz



021 350 106 | [sharron@park-lane.co.nz](mailto:sharron@park-lane.co.nz) | [park-lane.co.nz](http://park-lane.co.nz)

---

POWERED BY OWNLY LTD. LICENSED REAA 2008