



**RECORD OF TITLE
UNDER LAND TRANSFER ACT 2017
FREEHOLD**

**Guaranteed Search Copy issued under Section 60 of the Land
Transfer Act 2017**




R.W. Muir
Registrar-General
of Land

Identifier **WN38C/487**

Land Registration District **Wellington**

Date Issued 21 August 1990

Prior References

WN33D/313

Estate Fee Simple
Area 763 square metres more or less
Legal Description Lot 8 Deposited Plan 67906

Registered Owners

Frederick van Reenen Visser and Angelique Visser

Interests

Subject to water drainage rights (in gross) over part marked CC and sewage drainage rights (in gross) over part marked DD on DP 67906 in favour of the Kapiti Coast District Council created by Transfer B103555.5 - 21.8.1990 at 2.35 pm

The easements created by Transfer B103555.5 are subject to Section 309 (1) (a) Local Government Act 1974

Land Covenant in Transfer B103555.8 - 21.8.1990 at 2.35 pm

Fencing Covenant in Transfer B103555.8 - 21.8.1990 at 2.35 pm

Appurtenant hereto is a right of way specified in Easement Certificate B103555.9 - 21.8.1990 at 2.35 pm

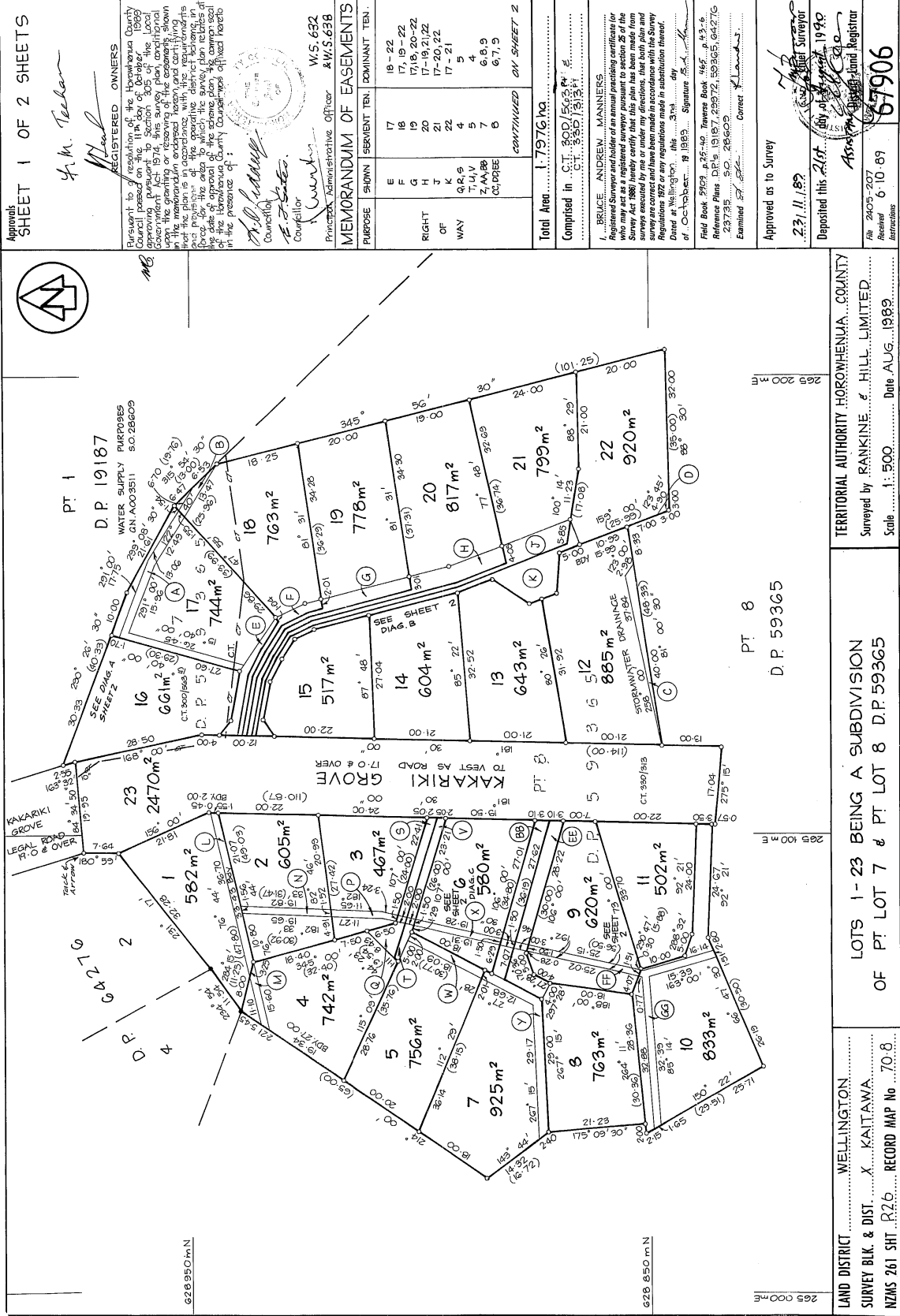
Subject to a right of way over parts marked CC and EE on DP 67906 specified in Easement Certificate B103555.9 - 21.8.1990 at 2.35 pm

The easements specified in Easement Certificate B103555.9 are subject to Section 309 (1) (a) Local Government Act 1974

Land Covenant in Transfer B217548.3 - 12.2.1992 at 10.58 am

8284656.2 Mortgage to Westpac New Zealand Limited - 17.9.2009 at 3:22 pm

12166874.3 Variation of Mortgage 8284656.2 - 1.7.2021 at 2:09 pm



Approved
SHEET 1 OF 2 SHEETS
4. M. Teckon
M. Head

REGISTERED OWNERS
Pursuant to a resolution of the Horowhenua County Council passed on the 15th day of September 1988, the Local Government Act 1974, this survey plan, conditional upon the granting or reserving of the easements shown in this plan, is hereby approved in accordance with the requirements of the operative district scheme, in force at the date on which the survey plan relates to, and the provisions of the Survey Act 1980, and the provisions of the Horowhenua County Councils (Consolidation) Act 1982, in the presence of:

M. Head
Councillor

M. Teckon
Councillor

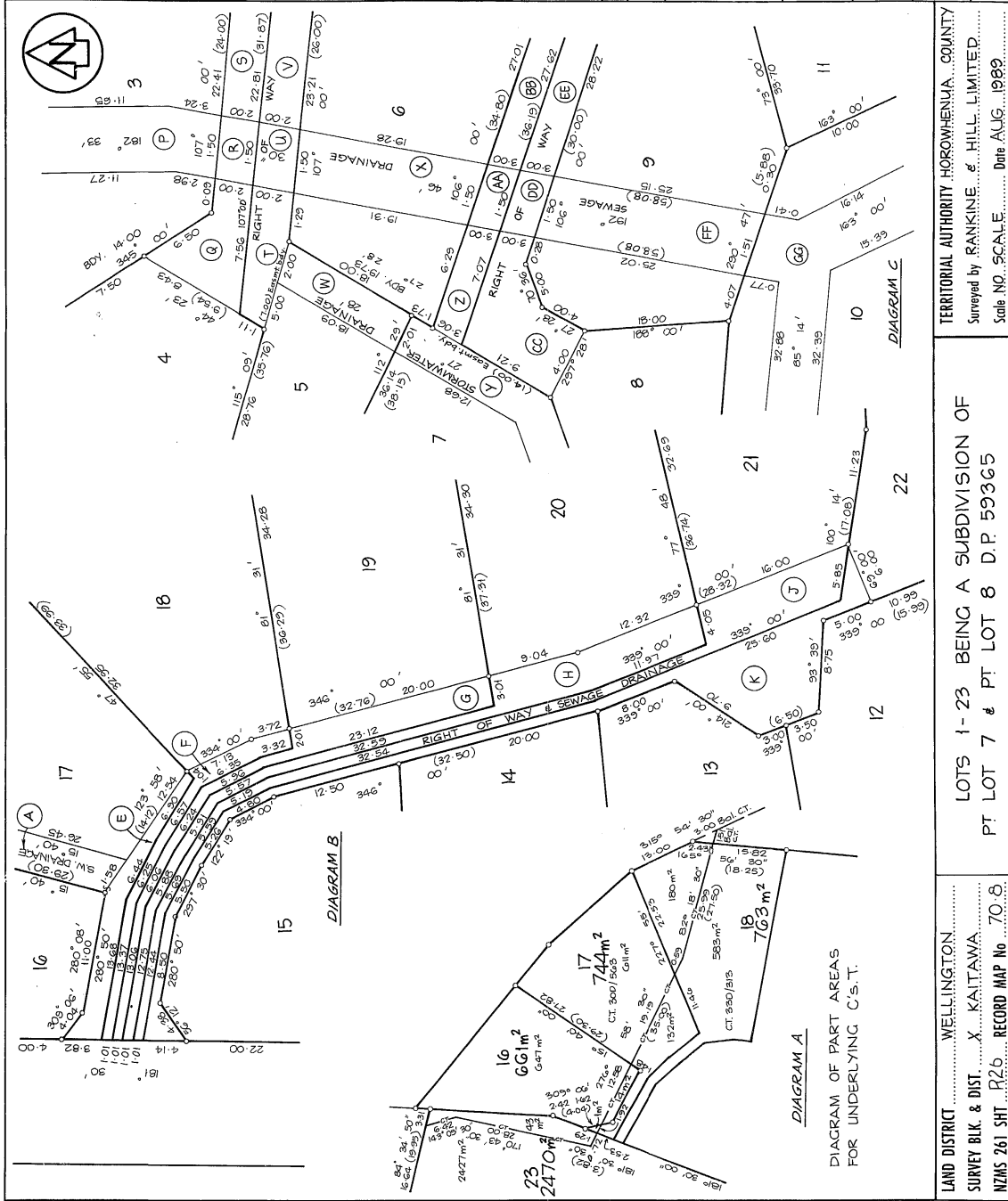
W.S. 632
K.W.S. 638
Principal Administrative Officer

MEMORANDUM OF EASEMENTS

PURPOSE	SHOWN	SERVIENT TEN.	DOMINANT TEN.
E	F	17	19-22
F	G	18	17, 19-22
G	H	19	17, 18, 20-22
H	I	20	17-19, 21, 22
I	J	21	17-22
J	K	22	17-22
K	L	22	17-22
L	M	22	17-22
M	N	22	17-22
N	O	22	17-22
O	P	22	17-22
P	Q	22	17-22
Q	R	22	17-22
R	S	22	17-22
S	T	22	17-22
T	U	22	17-22
U	V	22	17-22
V	W	22	17-22
W	X	22	17-22
X	Y	22	17-22
Y	Z	22	17-22
Z	AA	22	17-22
AA	BB	22	17-22
BB	CC	22	17-22
CC	DD	22	17-22
DD	EE	22	17-22
EE	FF	22	17-22
FF	GG	22	17-22
GG	HH	22	17-22
HH	II	22	17-22
II	JJ	22	17-22
JJ	KK	22	17-22
KK	LL	22	17-22
LL	MM	22	17-22
MM	NN	22	17-22
NN	OO	22	17-22
OO	PP	22	17-22
PP	QQ	22	17-22
QQ	RR	22	17-22
RR	SS	22	17-22
SS	TT	22	17-22
TT	UU	22	17-22
UU	VV	22	17-22
VV	WW	22	17-22
WW	XX	22	17-22
XX	YY	22	17-22
YY	ZZ	22	17-22
ZZ	AAA	22	17-22
AAA	BBB	22	17-22
BBB	CCC	22	17-22
CCC	DDD	22	17-22
DDD	EEE	22	17-22
EEE	FFF	22	17-22
FFF	GGG	22	17-22
GGG	HHH	22	17-22
HHH	III	22	17-22
III	JJJ	22	17-22
JJJ	KKK	22	17-22
KKK	LLL	22	17-22
LLL	MMM	22	17-22
MMM	NNN	22	17-22
NNN	OOO	22	17-22
OOO	PPP	22	17-22
PPP	QQQ	22	17-22
QQQ	RRR	22	17-22
RRR	SSS	22	17-22
SSS	TTT	22	17-22
TTT	UUU	22	17-22
UUU	VVV	22	17-22
VVV	WWW	22	17-22
WWW	XXX	22	17-22
XXX	YYY	22	17-22
YYY	ZZZ	22	17-22
ZZZ	AAA	22	17-22
AAA	BBB	22	17-22
BBB	CCC	22	17-22
CCC	DDD	22	17-22
DDD	EEE	22	17-22
EEE	FFF	22	17-22
FFF	GGG	22	17-22
GGG	HHH	22	17-22
HHH	III	22	17-22
III	JJJ	22	17-22
JJJ	KKK	22	17-22
KKK	LLL	22	17-22
LLL	MMM	22	17-22
MMM	NNN	22	17-22
NNN	OOO	22	17-22
OOO	PPP	22	17-22
PPP	QQQ	22	17-22
QQQ	RRR	22	17-22
RRR	SSS	22	17-22
SSS	TTT	22	17-22
TTT	UUU	22	17-22
UUU	VVV	22	17-22
VVV	WWW	22	17-22
WWW	XXX	22	17-22
XXX	YYY	22	17-22
YYY	ZZZ	22	17-22
ZZZ	AAA	22	17-22
AAA	BBB	22	17-22
BBB	CCC	22	17-22
CCC	DDD	22	17-22
DDD	EEE	22	17-22
EEE	FFF	22	17-22
FFF	GGG	22	17-22
GGG	HHH	22	17-22
HHH	III	22	17-22
III	JJJ	22	17-22
JJJ	KKK	22	17-22
KKK	LLL	22	17-22
LLL	MMM	22	17-22
MMM	NNN	22	17-22
NNN	OOO	22	17-22
OOO	PPP	22	17-22
PPP	QQQ	22	17-22
QQQ	RRR	22	17-22
RRR	SSS	22	17-22
SSS	TTT	22	17-22
TTT	UUU	22	17-22
UUU	VVV	22	17-22
VVV	WWW	22	17-22
WWW	XXX	22	17-22
XXX	YYY	22	17-22
YYY	ZZZ	22	17-22
ZZZ	AAA	22	17-22
AAA	BBB	22	17-22
BBB	CCC	22	17-22
CCC	DDD	22	17-22
DDD	EEE	22	17-22
EEE	FFF	22	17-22
FFF	GGG	22	17-22
GGG	HHH	22	17-22
HHH	III	22	17-22
III	JJJ	22	17-22
JJJ	KKK	22	17-22
KKK	LLL	22	17-22
LLL	MMM	22	17-22
MMM	NNN	22	17-22
NNN	OOO	22	17-22
OOO	PPP	22	17-22
PPP	QQQ	22	17-22
QQQ	RRR	22	17-22
RRR	SSS	22	17-22
SSS	TTT	22	17-22
TTT	UUU	22	17-22
UUU	VVV	22	17-22
VVV	WWW	22	17-22
WWW	XXX	22	17-22
XXX	YYY	22	17-22
YYY	ZZZ	22	17-22
ZZZ	AAA	22	17-22
AAA	BBB	22	17-22
BBB	CCC	22	17-22
CCC	DDD	22	17-22
DDD	EEE	22	17-22
EEE	FFF	22	17-22
FFF	GGG	22	17-22
GGG	HHH	22	17-22
HHH	III	22	17-22
III	JJJ	22	17-22
JJJ	KKK	22	17-22
KKK	LLL	22	17-22
LLL	MMM	22	17-22
MMM	NNN	22	17-22
NNN	OOO	22	17-22
OOO	PPP	22	17-22
PPP	QQQ	22	17-22
QQQ	RRR	22	17-22
RRR	SSS	22	17-22
SSS	TTT	22	17-22
TTT	UUU	22	17-22
UUU	VVV	22	17-22
VVV	WWW	22	17-22
WWW	XXX	22	17-22
XXX	YYY	22	17-22
YYY	ZZZ	22	17-22
ZZZ	AAA	22	17-22
AAA	BBB	22	17-22
BBB	CCC	22	17-22
CCC	DDD	22	17-22
DDD	EEE	22	17-22
EEE	FFF	22	17-22
FFF	GGG	22	17-22
GGG	HHH	22	17-22
HHH	III	22	17-22
III	JJJ	22	17-22
JJJ	KKK	22	17-22
KKK	LLL	22	17-22
LLL	MMM	22	17-22
MMM	NNN	22	17-22
NNN	OOO	22	17-22
OOO	PPP	22	17-22
PPP	QQQ	22	17-22
QQQ	RRR	22	17-22
RRR	SSS	22	17-22
SSS	TTT	22	17-22
TTT	UUU	22	17-22
UUU	VVV	22	17-22
VVV	WWW	22	17-22
WWW	XXX	22	17-22
XXX	YYY	22	17-22
YYY	ZZZ	22	17-22
ZZZ	AAA	22	17-22
AAA	BBB	22	17-22
BBB	CCC	22	17-22
CCC	DDD	22	17-22
DDD	EEE	22	17-22
EEE	FFF	22	17-22
FFF	GGG	22	17-22
GGG	HHH	22	17-22
HHH	III	22	17-22
III	JJJ	22	17-22
JJJ	KKK	22	17-22
KKK	LLL	22	17-22
LLL	MMM	22	17-22
MMM	NNN	22	17-22
NNN	OOO	22	17-22
OOO	PPP	22	17-22
PPP	QQQ	22	17-22
QQQ	RRR	22	17-22
RRR	SSS	22	17-22
SSS	TTT	22	17-22
TTT	UUU	22	17-22
UUU	VVV	22	17-22
VVV	WWW	22	17-22
WWW	XXX	22	17-22
XXX	YYY	22	17-22
YYY	ZZZ	22	17-22
ZZZ	AAA	22	17-22
AAA	BBB	22	17-22
BBB	CCC	22	17-22
CCC	DDD	22	17-22
DDD	EEE	22	17-22
EEE	FFF	22	17-22
FFF	GGG	22	17-22
GGG	HHH	22	17-22
HHH	III	22	17-22
III	JJJ	22	17-22
JJJ	KKK	22	17-22
KKK	LLL	22	17-22
LLL	MMM	22	17-22
MMM	NNN	22	17-22
NNN	OOO	22	17-22
OOO	PPP	22	17-22
PPP	QQQ	22	17-22
QQQ	RRR	22	17-22
RRR	SSS	22	17-22
SSS	TTT	22	17-22
TTT	UUU	22	17-22
UUU	VVV	22	17-22
VVV	WWW	22	17-22
WWW	XXX	22	17-22
XXX	YYY	22	17-22
YYY	ZZZ	22	17-22
ZZZ	AAA	22	17-22
AAA	BBB	22	17-22
BBB	CCC	22	17-22
CCC	DDD	22	17-22
DDD	EEE	22	17-22
EEE	FFF	22	17-22
FFF	GGG	22	17-22
GGG	HHH	22	17-22
HHH	III	22	17-22
III	JJJ	22	17-22
JJJ	KKK	22	17-22
KKK	LLL	22	17-22
LLL	MMM	22	17-22
MMM	NNN	22	17-22
NNN	OOO	22	17-22
OOO	PPP	22	17-22
PPP	QQQ	22	17-22
QQQ	RRR	22	17-22
RRR	SSS	22	17-22
SSS	TTT	22	17-22
TTT	UUU	22	17-22
UUU	VVV	22	17-22
VVV	WWW	22	17-22
WWW	XXX	22	17-22
XXX	YYY	22	17-22
YYY	ZZZ	22	17-22
ZZZ	AAA		

Approvals SHEET 2 OF 2 SHEETS
DIAGRAM SHEET

MEMORANDUM OF EASEMENTS			
PURPOSE	SHOWN	SERMENT TEN.	GRANTEE
STORM-WATER DRAINAGE	A	17	
	B	18	
	C	22	
	D	22	
	E	17	
	L	1	
	M, Q	4	
SEWAGE DRAINAGE	T, W	5	
	Y, Z	8	
			HOROWHENUA COUNTY COUNCIL
			17
			18
			19
			20
			21
			22
			2
			3
			4
			5
			6
			7
			8
			9
			10



Total Area

Comprised in

I, BRUCE ANDREW MANNERS, Surveyor, do hereby certify that this plan has been made from surveys executed by me or under my directions, that both plan and survey are correct and have been made in accordance with the Survey Act 1986. Dated at Wellington this 13th day of October 1989. Signature B.A.M.

Field Book 2709, p. 35-39; Trench Book 465, p. 43-46.

Reference Plans

Examined by

Approved as to Survey 23/11/89

Deposited this 21st day of August 1990

Surveyor Bruce Mannors

Abstract Land Registrar

File No. 2403-207-2
Received 6/10/89
Instructions 67906

TERRITORIAL AUTHORITY HOROWHENUA COUNTY
Surveyed by RANKINE & HILL LIMITED
Scale NO. SCALE Date AUG 1989

LAND DISTRICT WELLINGTON
SURVEY BLK. & DIST. X KAITAWA
NZMS 261 SH 126 RECORD MAP No 70.8
Walkindale 11

DIAGRAM OF PART AREAS FOR UNDERLYING C.S.T.

W.A. ROBERTSON, SURVEYOR GENERAL, DEPARTMENT OF SURVEY AND LAND INFORMATION, NEW ZEALAND