



Record of Survey - LT 608751

Survey Number LT 608751
Surveyor Reference 45168 - 4 Elizabeth Street, Rolleston
Surveyor John William Cochran
Survey Firm Davis Ogilvie & Partners Ltd (Christchurch)
Surveyor Declaration

Survey Details

Dataset Description LOTS 1 AND 2 BEING A SUBDIVISION OF LOT 45 DP 239
Purpose LT Subdivision
Status Initiated **Type** Survey
Land District Canterbury **Survey Class** Class A
Meridional Circuit Mount Pleasant 2000 **Vertical Datum** New Zealand Vertical Datum 2016

Survey Dates

Surveyed Date 04/03/2025 **Certified Date**
Submitted Date **Survey Approval Date**
Deposit Date

Referenced Surveys

Survey Number	Land District	Bearing Correction
DP 21711	Canterbury	0°00'00"
DP 239	Canterbury	0°00'00"
DP 42800	Canterbury	0°00'00"
DP 36030	Canterbury	0°00'00"
SO 9926	Canterbury	0°00'00"
DP 34041	Canterbury	0°00'00"
SO 315214	Canterbury	0°00'00"
DP 588881	Canterbury	0°00'00"
DP 593770	Canterbury	0°00'00"

Territorial Authorities

Selwyn District

Comprised In

RT CB8K/463

Created Parcels

Parcels	Parcel Intent	Area	RT Reference
Lot 1 Deposited Plan 608751	Fee Simple Title	0.0426 Ha	1228443
Lot 2 Deposited Plan 608751	Fee Simple Title	0.0586 Ha	1228444
Area A Deposited Plan 608751	Easement		
Height-Limited Area B Deposited Plan 608751	Easement		
Area C Deposited Plan 608751	Easement		



Record of Survey - LT 608751

Created Parcels

Parcels	Parcel Intent	Area	RT Reference
Area D Deposited Plan 608751	Easement		
Total Area		<hr/> 0.1012 Ha	

Mark and Vector

Survey Number DP 608751

Meridional Circuit Mount Pleasant 2000

From	To	Code	Bearing	Adpt Surv	Bearing Correction	Distance	Adpt Surv	Class
IS VI DP 48480	RN 10 SO 315214	ob34	142°21'50" M			50.52 M		
IS VI DP 48480	MA I DP 588881	ob35	27°32'35" M			118.25 M		
IS VI DP 48480	NAIL 200 DP 593770	ob36	296°18'00" M			91.47 M		
IS VI DP 48480	BS III DP 405513	ob37	304°09'25" M			286.74 M		
IS VI DP 48480	IT II SO 9926	ob38	304°45'15" M			87.52 M		
IS VI DP 48480	IR 36 DP 588881	ob39	9°05'20" M			58.02 M		
BS III DP 405513	NAIL 200 DP 593770	ob32	127°48'20" A	DP 588881	0°00'00"	196.53 A	DP 588881	
NAIL 200 DP 593770	MA III DP 588881	ob29	82°08'40" A	DP 588881	0°00'00"	102.28 A	DP 588881	
MA III DP 588881	IR II DP 588881	ob50	28°34'00" A	DP 588881	0°00'00"	16.06 A	DP 588881	
IR II DP 588881	MA I DP 588881	ob53	37°24'00" A	DP 588881	0°00'00"	45.61 A	DP 588881	
NAIL 200 DP 593770	RN 10 SO 315214	ob30	125°31'00" A	DP 588881	0°00'00"	138.63 A	DP 588881	
BS III DP 405513	IR 7 SO 315214	ob33	128°35'40" A	DP 588881	0°00'00"	366.37 A	DP 588881	
IR 7 SO 315214	IT XXII SO 9841	ob5	326°30'00" A	DP 588881	0°00'00"	21.31 A	SO 315214	
IT XXII SO 9841	RN 10 SO 315214	ob6	326°30'00" A	DP 588881	0°00'00"	11.72 A	SO 315214	
IT II SO 9926	IT IV SO 9926	ob48	34°45'45" A	DP 34041	0°00'00"	52.31 A	DP 42800	
IT IV SO 9926	IS V SO 9926	ob7	34°45'45" A	DP 36030	0°00'00"	65.38 A	DP 36030	
IS V SO 9926	IS XXVI DP 21711	ob9	124°45'50" A	SO 9926	0°00'00"	82.48 A	SO 9926	
IS XXVI DP 21711	IS XLII DP 21711	ob10	124°45'50" A	SO 9926	0°00'00"	50.29 A	SO 9926	
IS XLII DP 21711	PEG XLI DP 21711	ob11	214°45'50" A	DP 21711	0°00'00"	15.09 A	DP 21711	
PEG XLI DP 21711	IS XXXVIII DP 21711	ob12	214°45'50" A	DP 21711	0°00'00"	55.32 A	DP 21711	
IS XXXVIII DP 21711	PEG XXXIII DP 21711	ob13	214°45'50" A	DP 21711	0°00'00"	45.26 A	DP 21711	
PEG XXXIII DP 21711	IT XXII SO 9841	ob14	182°17'30" A	DP 21711	0°00'00"	25.65 A	DP 21711	
IT II SO 9926	PEG (3) DP 34014	ob49	119°34'00" A	DP 34041	0°00'00"	22.22 A	DP 34041	
PEG (3) DP 34014	PEG 6 DP 608751	ob15	124°45'50" A	DP 21711	0°00'00"	40.24 A	DP 239	
PEG 6 DP 608751	BOLT 3 DP 608751	ob19	124°45'50" A	DP 21711	0°00'00"	4.00 C		Class A
BOLT 3 DP 608751	PEG XIX DP 21711	ob60	124°45'50" A	DP 21711	0°00'00"	16.12 C		Class A
PEG XIX DP 21711	PEG XXXIII DP 21711	ob16	124°45'50" A	DP 21711	0°00'00"	50.29 A	DP 21711	

Mark and Vector

Survey Number DP 608751

Meridional Circuit Mount Pleasant 2000

From	To	Code	Bearing	Adpt Surv	Bearing Correction	Distance	Adpt Surv	Class
IT IV SO 9926	PEG (2) DP 34041	ob8	124°45'50"	A DP 34041	0°00'00"	22.13 A	DP 34041	
PEG (2) DP 34041	IR 36 DP 588881	ob55	124°45'50"	A DP 588881	0°00'00"	40.23 A	DP 239	
MA III DP 588881	DISK 30 DP 588881	ob51	143°49'00"	A DP 588881	0°00'00"	10.74 A	DP 588881	
PEG XIX DP 21711	DISK 4 DP 608751	ob17	34°45'50"	A DP 21711	0°00'00"	25.00 C		Class A
DISK 4 DP 608751	IS XXII DP 21711	ob58	34°45'50"	A DP 21711	0°00'00"	20.26 C		Class A
IS XXII DP 21711	DISK 30 DP 588881	ob18	34°45'50"	A DP 21711	0°00'00"	5.03 A	DP 21711	Class A
IR 36 DP 588881	DISK 30 DP 588881	ob67	124°45'50"	A DP 588881	0°00'00"	20.12 A	DP 588881	Class A
MA I DP 588881	PEG 28 DP 588881	ob26	181°12'00"	M		17.69 M		
MA I DP 588881	PEG 34 DP 588881	ob27	239°38'00"	M		16.25 M		
MA I DP 588881	PEG 33 DP 588881	ob28	249°49'00"	M		18.01 M		
PEG 28 DP 588881	PEG 29 DP 588881	ob21	214°45'50"	A DP 588881	0°00'00"	26.93 A	DP 588881	
PEG 29 DP 588881	DISK 30 DP 588881	ob24	214°45'50"	A DP 588881	0°00'00"	23.36 A	DP 588881	
NAIL 200 DP 593770	IT II SO 9926	ob31	47°08'00"	A DP 588881	0°00'00"	13.76 A	DP 588881	
RN 10 SO 315214	NAIL 1 DP 520212	ob25	40°41'20"	A DP 588881	0°00'00"	124.14 A	DP 588881	
NAIL 1 DP 520212	MA I DP 588881	ob54	311°38'00"	A DP 588881	0°00'00"	76.35 A	DP 588881	
PEG 6 DP 608751	UNMK 47 DP 608751	ob20	34°45'50"	A DP 21711	0°00'00"	25.00 C		Class A
UNMK 47 DP 608751	IR 36 DP 588881	ob56	34°45'50"	A DP 21711	0°00'00"	25.29 C		Class A
UNMK 47 DP 608751	BOLT 6 DP 608751	ob57	124°45'50"	C		5.00 C		Class A
UNMK 59 DP 608751	DISK 4 DP 608751	ob75	124°45'50"	C		10.61 C		Class A
BOLT 3 DP 608751	PEG 1 DP 608751	ob61	34°45'50"	C		11.40 C		Class A
PEG 1 DP 608751	UNMK 53 DP 608751	ob0	34°45'50"	C		1.47 C		Class A
UNMK 53 DP 608751	UNMK 54 DP 608751	ob62	34°45'50"	C		8.56 C		Class A
UNMK 54 DP 608751	UNMK 60 DP 608751	ob64	34°45'50"	C		0.68 C		Class A
BOLT 2 DP 608751	BOLT 5 DP 608751	ob2	34°45'50"	C		1.30 C		Class A

Mark and Vector

Survey Number DP 608751

Meridional Circuit Mount Pleasant 2000

From	To	Code	Bearing	Adpt Surv	Bearing Correction	Distance	Adpt Surv	Class
PEG 1 DP 608751	UNMK 50 DP 608751	ob1	304°45'50"	C		2.00 C		Class A
UNMK 50 DP 608751	UNMK 51 DP 608751	ob3	34°45'50"	C		11.30 C		Class A
UNMK 51 DP 608751	BOLT 2 DP 608751	ob4	124°45'50"	C		2.00 C		Class A
UNMK 53 DP 608751	UNMK 55 DP 608751	ob63	308°06'00"	C		0.65 C		Class A
UNMK 55 DP 608751	UNMK 56 DP 608751	ob65	38°06'00"	C		8.54 C		Class A
UNMK 56 DP 608751	UNMK 54 DP 608751	ob66	126°06'00"	C		0.15 C		Class A
IS VI DP 48480	PEG 6 DP 608751	ob40	309°19'00"	M		25.22 M		
IS VI DP 48480	PEG 3 DP 34014	ob41	306°20'00"	M		65.32 M		
MA III DP 588881	IR 36 DP 588881	ob52	285°16'00"	A	DP 588881	0°00'00"	10.57 A DP 588881	
IR 36 DP 588881	PEG 33 DP 588881	ob68	34°45'50"	A	DP 588881	0°00'00"	50.29 A DP 588881	
PEG 33 DP 588881	PEG 34 DP 588881	ob23	124°45'50"	A	DP 588881	0°00'00"	3.50 A DP 588881	
PEG 34 DP 588881	PEG 28 DP 588881	ob22	124°45'50"	A	DP 588881	0°00'00"	16.62 A DP 588881	
IS VI DP 48480	BOLT 3 DP 608751	ob42	310°11'30"	M		21.25 M		
IS VI DP 48480	PEG 1 DP 608751	ob43	337°09'30"	M		25.05 M		
IS VI DP 48480	BOLT 2 DP 608751	ob44	354°13'30"	M		32.53 M		
IS VI DP 48480	DISK 4 DP 608751	ob45	24°10'30"	M		27.47 M		
PEG 3 DP 34014	PEG (3) DP 34014	ob69	11°20'00"	C		0.23 C		
BOLT 5 DP 608751	BOLT 6 DP 608751	ob59	79°45'50"	C		1.41 C		Class A
IS VI DP 48480	BOLT 6 DP 608751	ob46	358°02'30"	M		33.69 M		
IS VI DP 48480	BOLT 5 DP 608751	ob47	355°39'00"	M		33.52 M		
UNMK 60 DP 608751	BOLT 2 DP 608751	ob71	34°45'50"	C		0.59 C		Class A
BOLT 6 DP 608751	UNMK 59 DP 608751	ob70	124°45'50"	C		4.51 C		Class A
UNMK 60 DP 608751	UNMK 57 DP 608751	ob72	74°23'00"	C		2.45 C		Class A
UNMK 57 DP 608751	UNMK 58 DP 608751	ob73	124°45'50"	C		3.94 C		Class A

Mark and Vector

Survey Number DP 608751

Meridional Circuit Mount Pleasant 2000

From	To	Code	Bearing	Adpt Surv	Bearing Correction	Distance	Adpt Surv	Class
UNMK 58 DP 608751	UNMK 59 DP 608751	ob74	34°45'50" C			1.00 C		Class A

Mark Name	Mark Condition	Description
BS III DP 405513		Flush in kerb.
IR 7 SO 315214		IR down 0.30m in grass berm.
IS VI DP 48480		down 0.25 in grass berm
IT II SO 9926		0.3m deep in berm
MA I DP 588881		flush in kerb
MA III DP 588881		in conc pad
NAIL 1 DP 520212		fl in drive
NAIL 200 DP 593770		fl in drive
PEG 6 DP 608751		Old PEG No Rec.
RN 10 SO 315214		flush in kerb

*** End of Report ***

LT 608751 Schedule/Memorandum

Land registration district
Canterbury

Territorial authority
Selwyn District

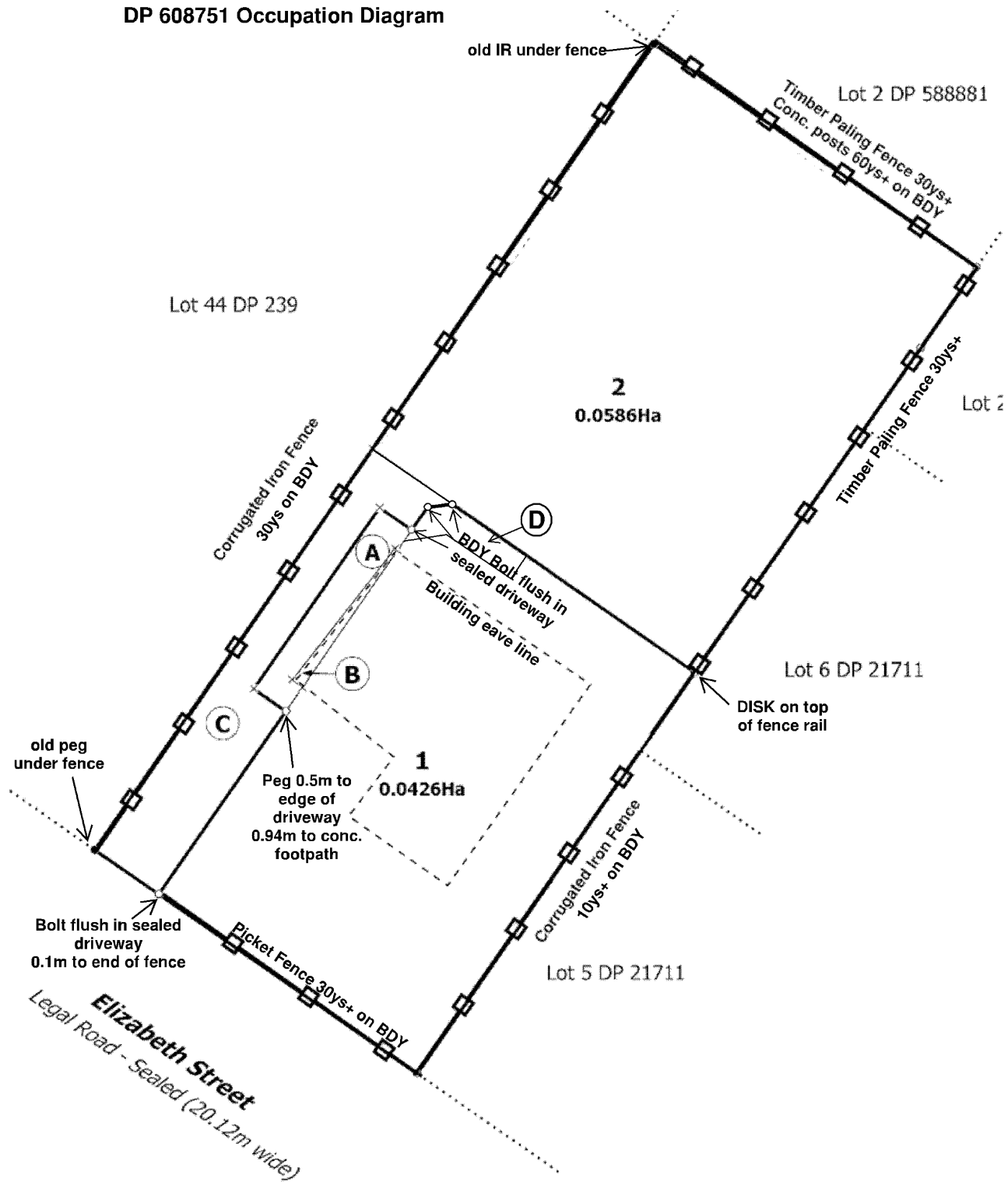
Memorandum of Easements

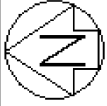
Parcels shown with a prefix of *HL*- include height-limited boundaries

PURPOSE	SHOWN	BURDENED LAND	BENEFITED LAND	UPPER LIMIT
Right of way Right to drain sewage, water Right to convey electricity, telecommunications, water	A	Lot 1	Lot 2	-
" "	<i>HL</i> -B	Lot 1	Lot 2	56.89
Right to drain sewage, water	C	Lot 2	Lot 1	-
Right to drain sewage	D	Lot 1	Lot 2	-

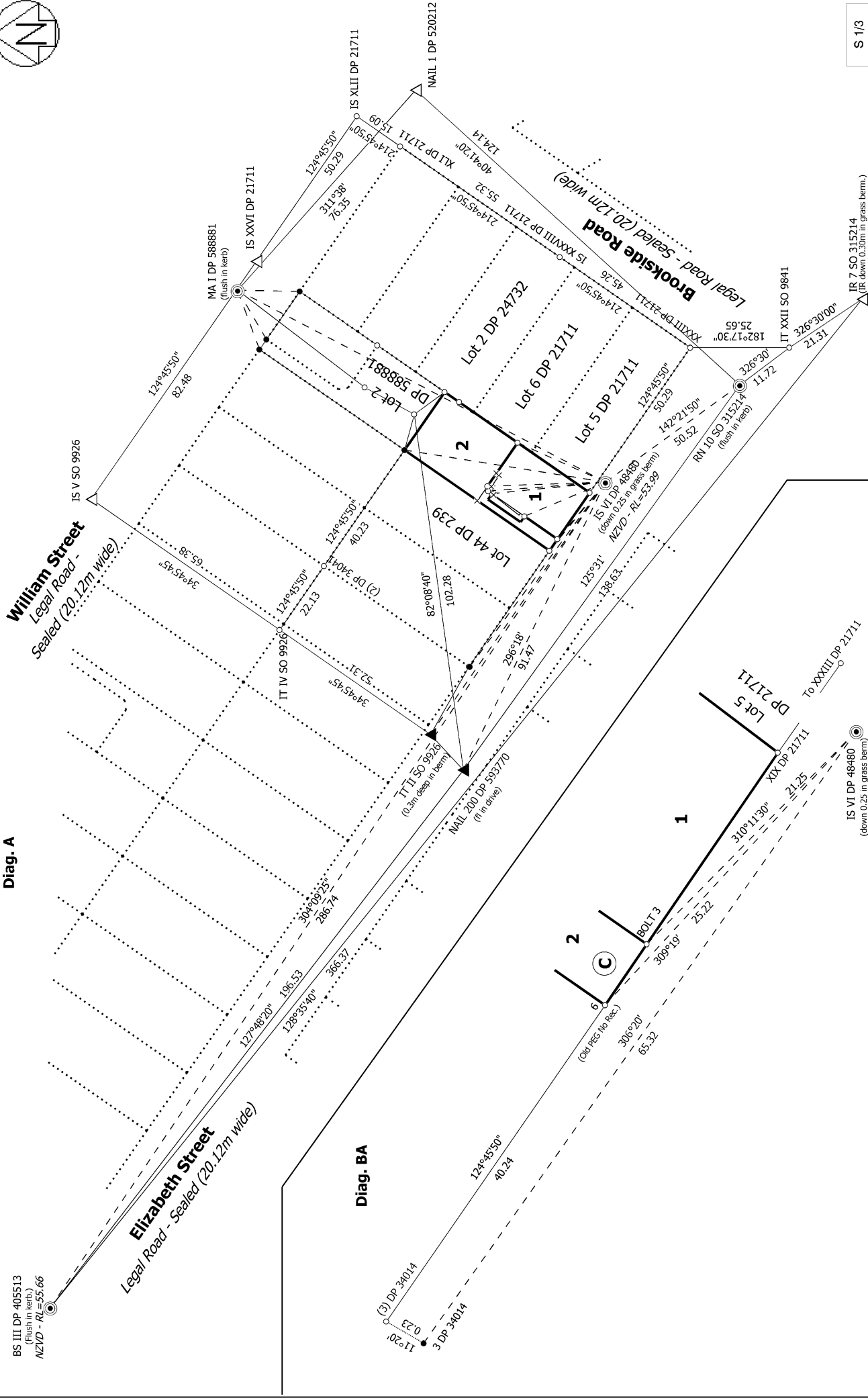
Occupation Diagram

DP 608751 Occupation Diagram





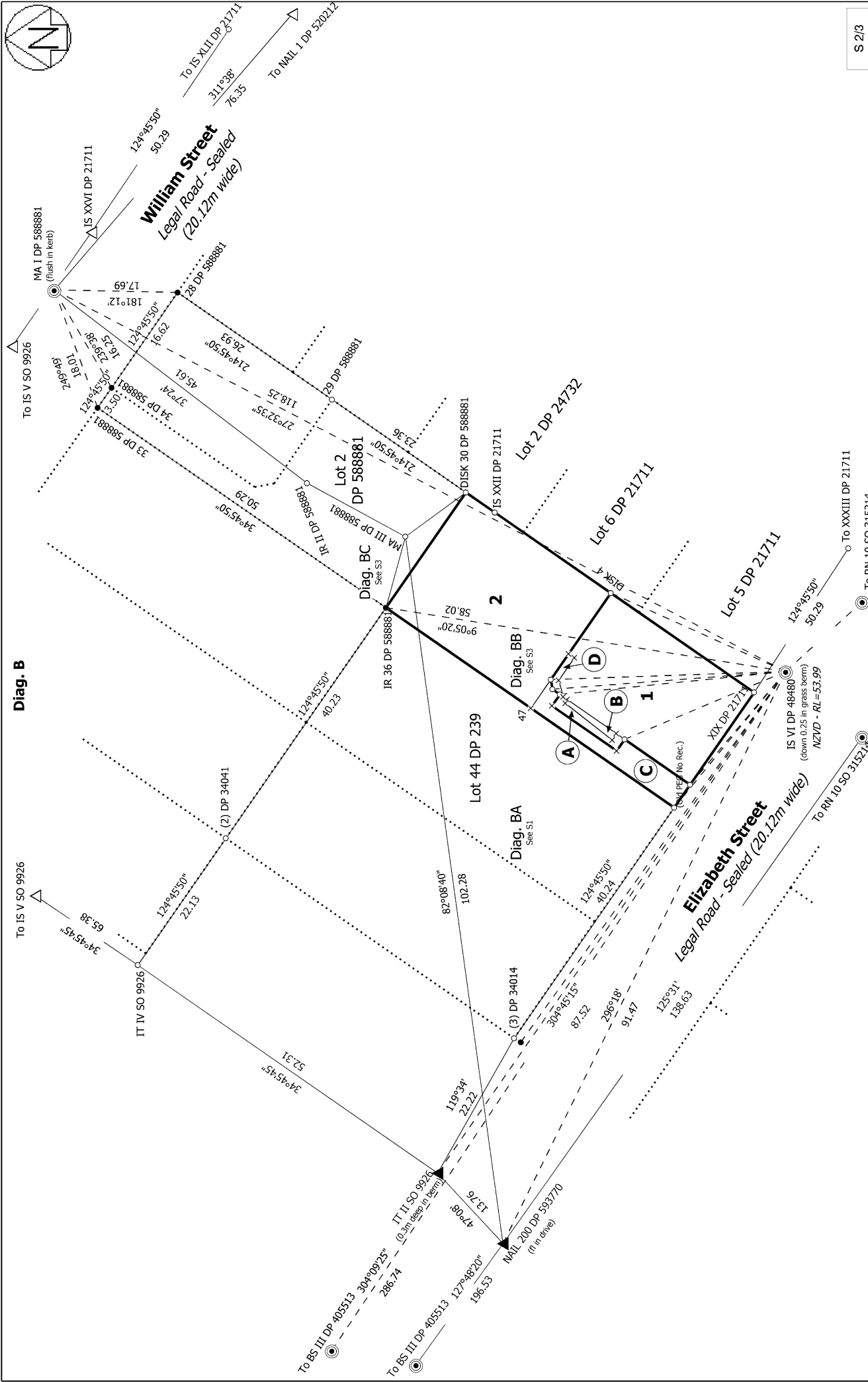
Diag. A



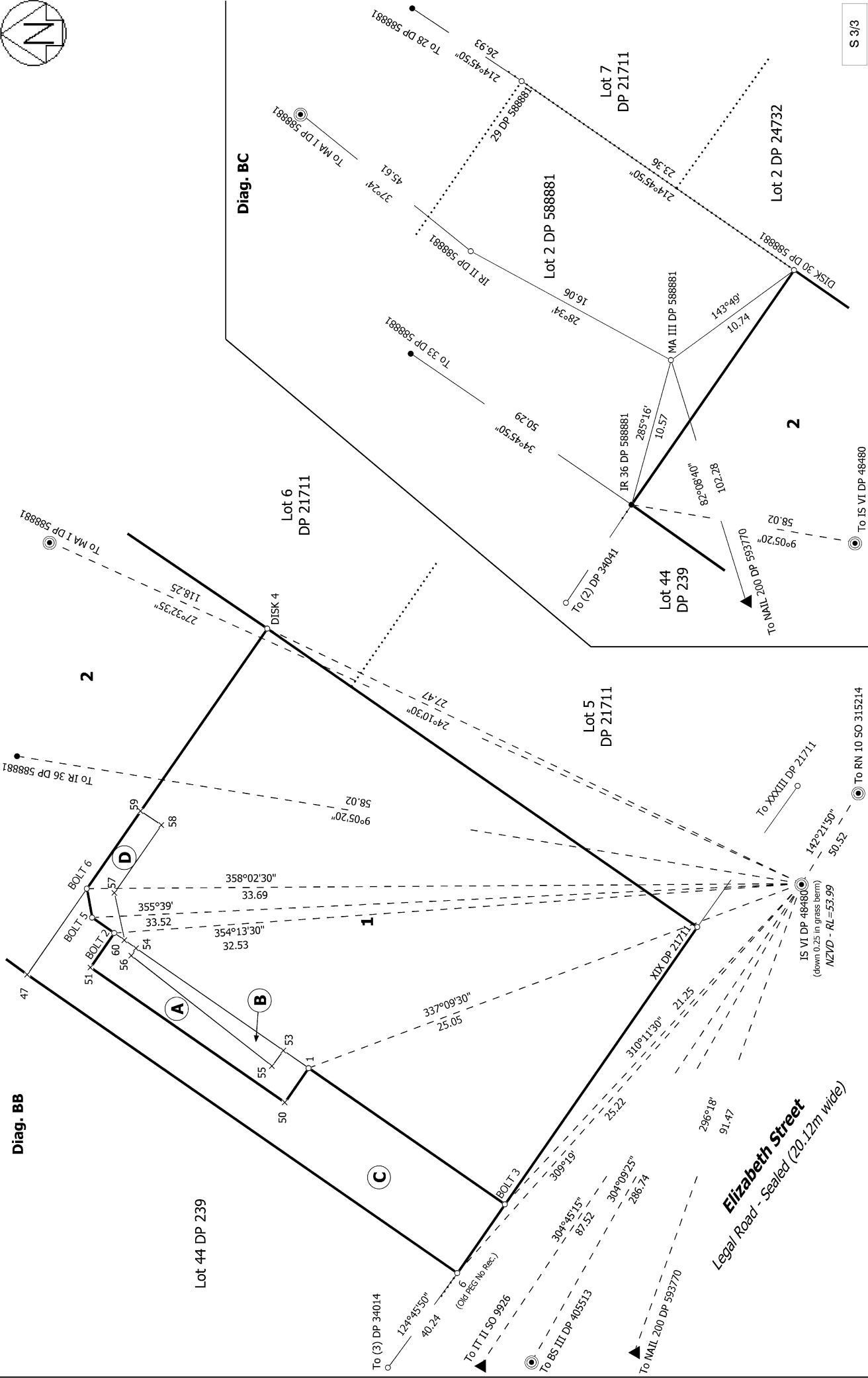
Diag. BA

S 1/3

<p>Land District: Canterbury</p>	<p>Surveyor: John William Cochran Firm: Davis Ogilvie & Partners Ltd (Christchurch) Date of Survey: 4/03/2025</p>	<p>Record of Survey LT 608751 DRAFT</p>
<p>LOTS 1 AND 2 BEING A SUBDIVISION OF LOT 45 DP 239</p>		
<p>Digitally Generated Plan Generated on: 09/04/2025 3:08pm Page 10 of 13</p>		



S 2/3	Record of Survey LT 608751 DRAFT	Surveyor: John William Cochran Firm: Davis Ogilvie & Partners Ltd (Christchurch) Date of Survey: 4/03/2025	LOTS 1 AND 2 BEING A SUBDIVISION OF LOT 45 DP 239	Land District: Canterbury Digitally Generated Plan Generated on: 09/04/2025 3:08pm Page 11 of 13
-------	--	--	---	---



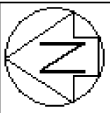
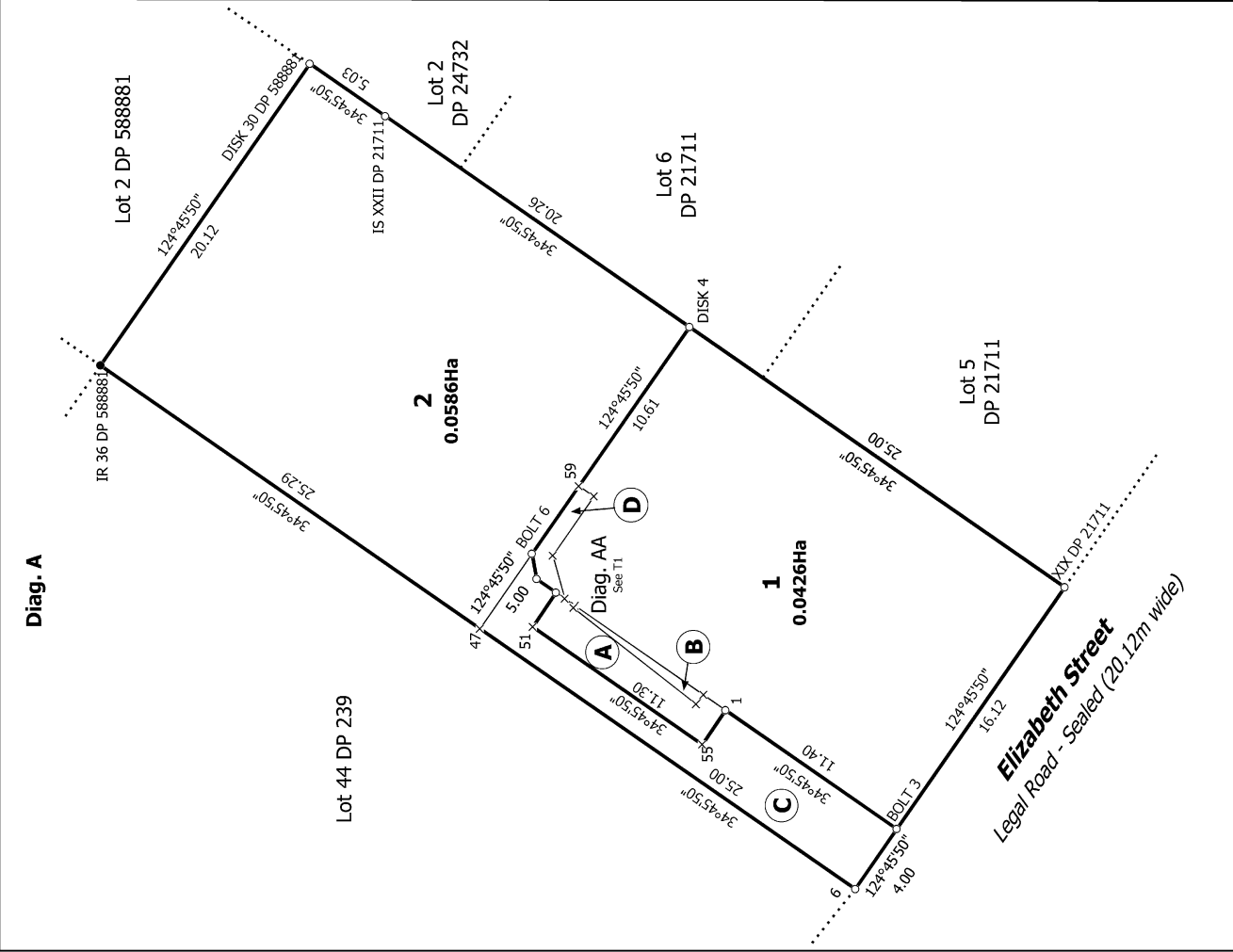
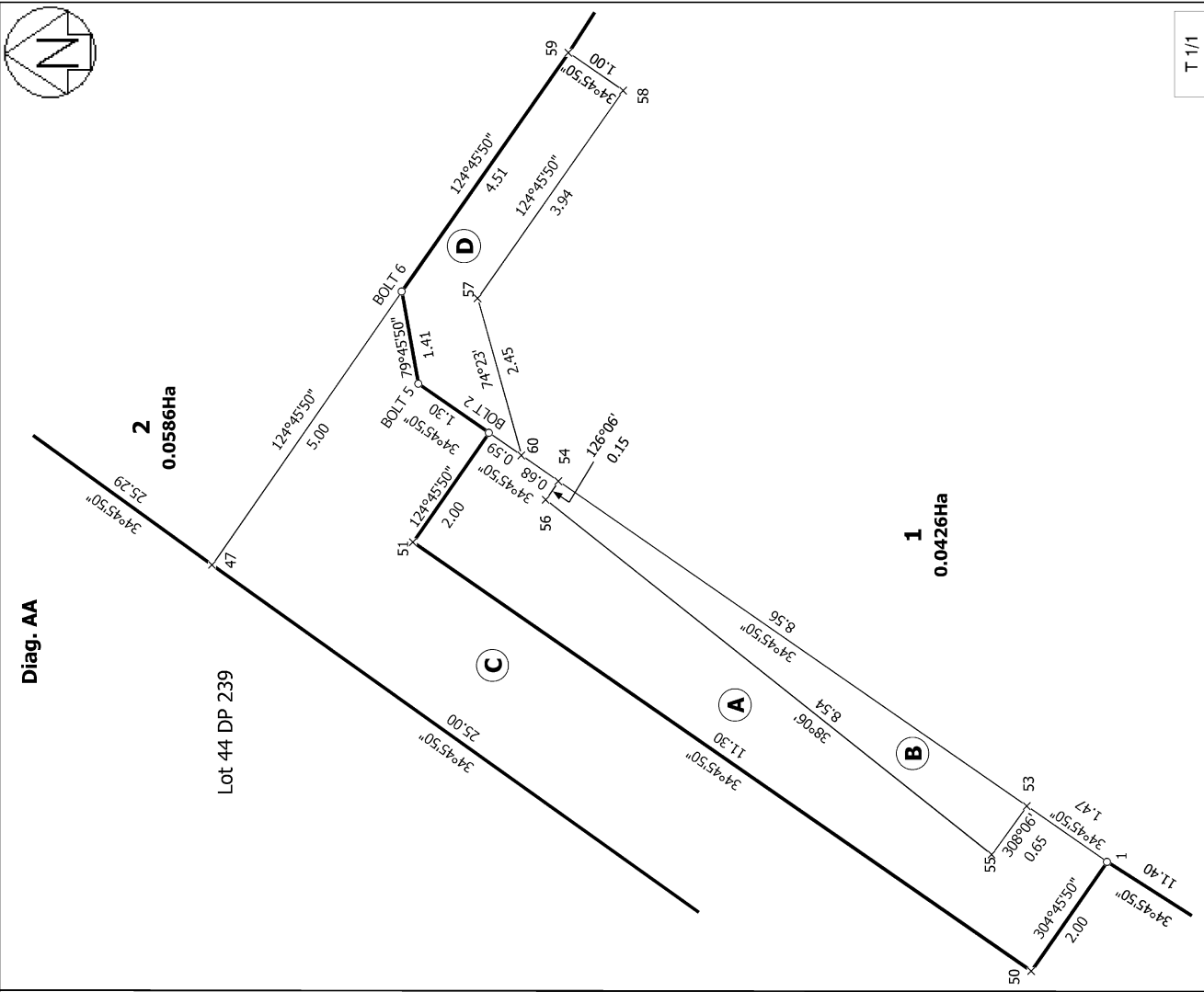
S 3/3

Record of Survey
LT 608751
DRAFT

Surveyor: John William Cochran
Firm: Davis Ogilvie & Partners Ltd (Christchurch)
Date of Survey: 4/03/2025

LOTS 1 AND 2 BEING A SUBDIVISION OF LOT 45 DP 239

Land District: Canterbury
Digitally Generated Plan
Generated on: 09/04/2025 3:08pm Page 12 of 13



T 1/1

Record of Survey
LT 608751
DRAFT

Surveyor: John William Cochran
Firm: Davis Ogilvie & Partners Ltd (Christchurch)
Date of Survey: 4/03/2025

LOTS 1 AND 2 BEING A SUBDIVISION OF LOT 45 DP 239

Land District: Canterbury
Digitally Generated Plan
Generated on: 09/04/2025 3:08pm Page 13 of 13