

Exercise 1

- What 3 flavors?
- Optionally Download [KMZ of Logan River Styles](#)












Download & Explore
[KMZ of Logan River Styles](#)

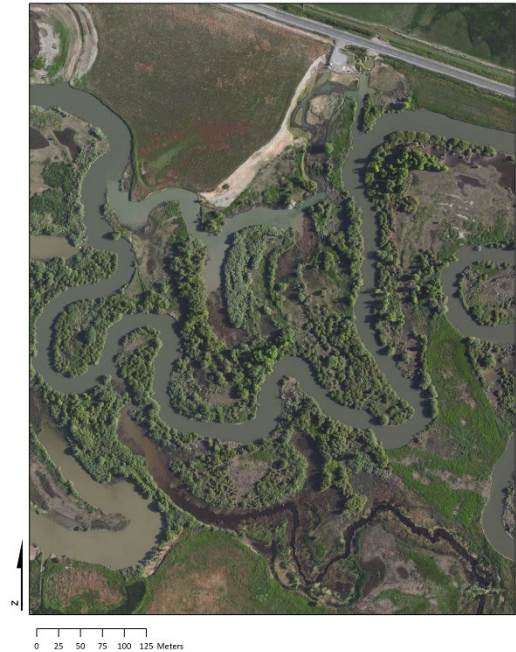
Legend

Logan River - River Styles

Unclassified

River Style

Partly Confined		Headwater
		Gorge
		Confined Valley with Occasional Floodplain Pockets
Partly Confined		PC Valley with Low Sinuosity Planform Control (SF)
		PC Valley with Low Sinuosity Planform Control (UF)
		PC Valley with Bedrock Control Discontinuous FP
Laterally Unconfined		LU Discontinuous Channel
		LU - Low Sinuosity
		LU - Meandering Gravel
		LU - Meandering Fine Grained
		Choose Your Own Adventure

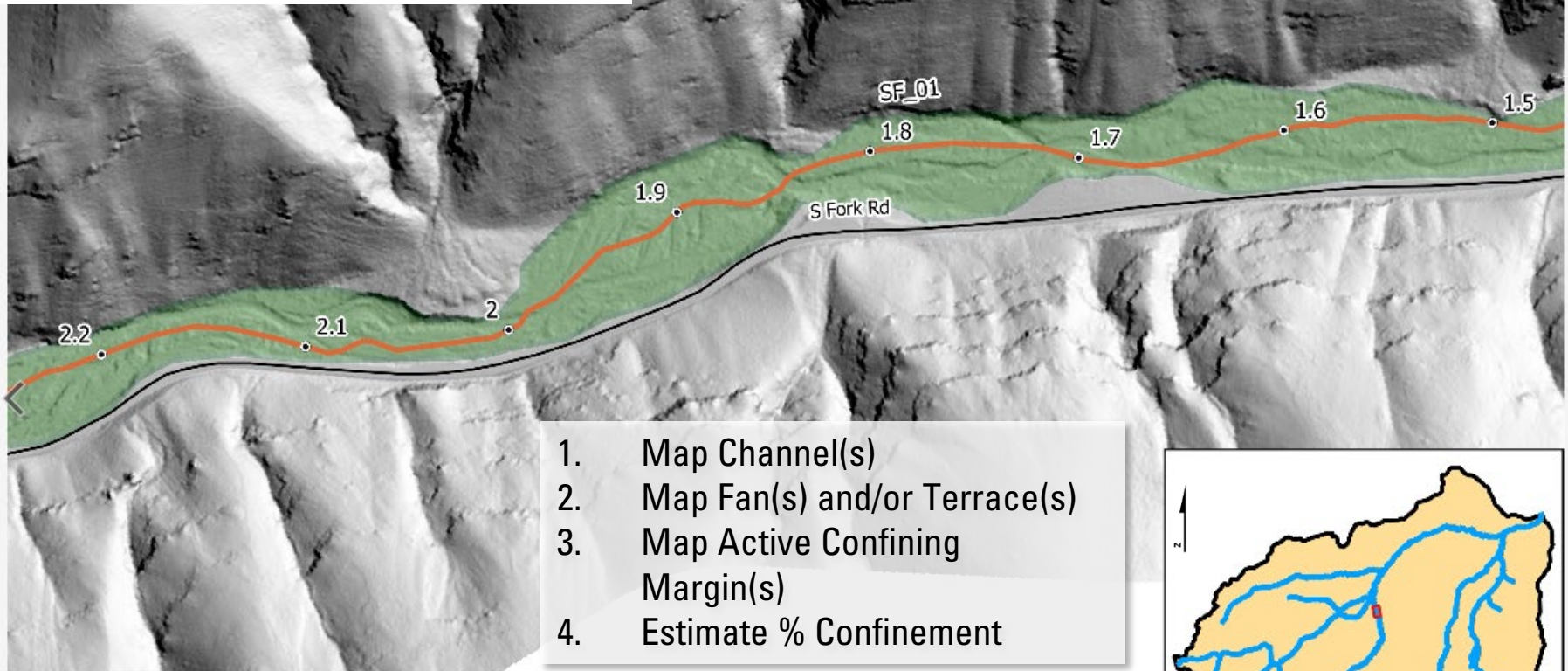


Exercise 2 – Reading Valley Setting

Print this Page

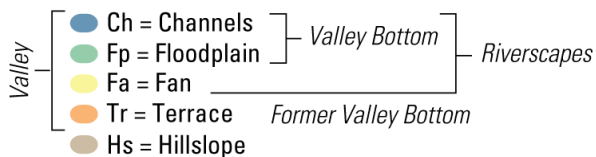
South Fork Asotin Creek
River Mile 1.5 to 2.2

0 250 500 750 1000 ft



1. Map Channel(s)
2. Map Fan(s) and/or Terrace(s)
3. Map Active Confining Margin(s)
4. Estimate % Confinement

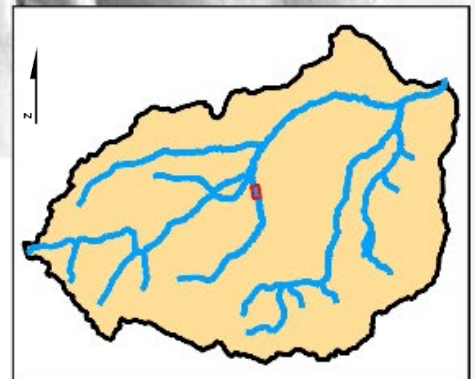
GEOMORPHIC UNIT KEY



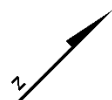
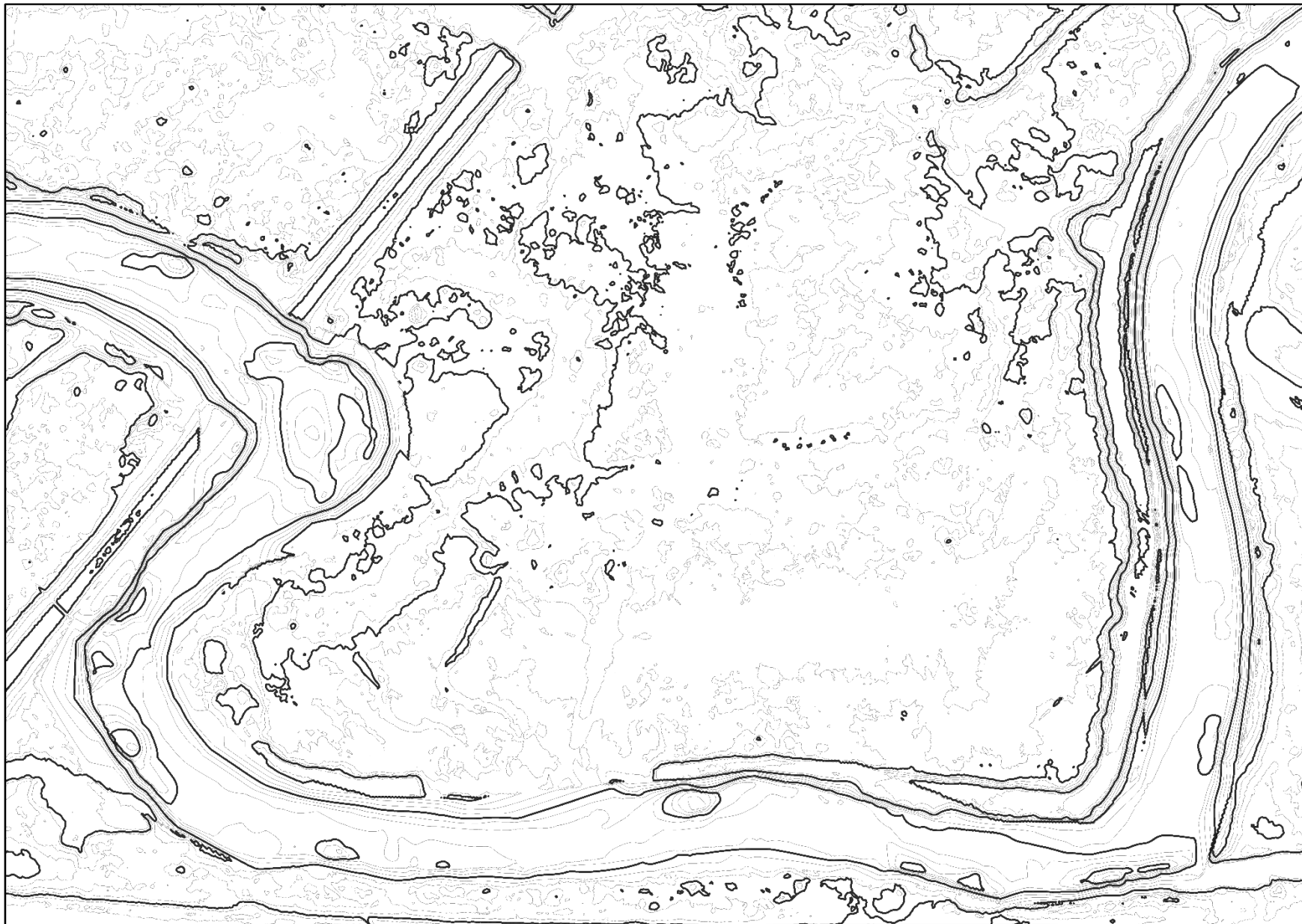
The valley bottom is comprised of areas that could plausibly flood in the contemporary flow regime.

MARGIN TYPES

- Valley Margin
- - Valley Bottom Margin
- Active Confining Margin



EXERCISE 3: MAP IN CHANNEL & OUT OF CHANNEL



0 10 20 30 40 50 Meters

1 m Contour

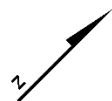
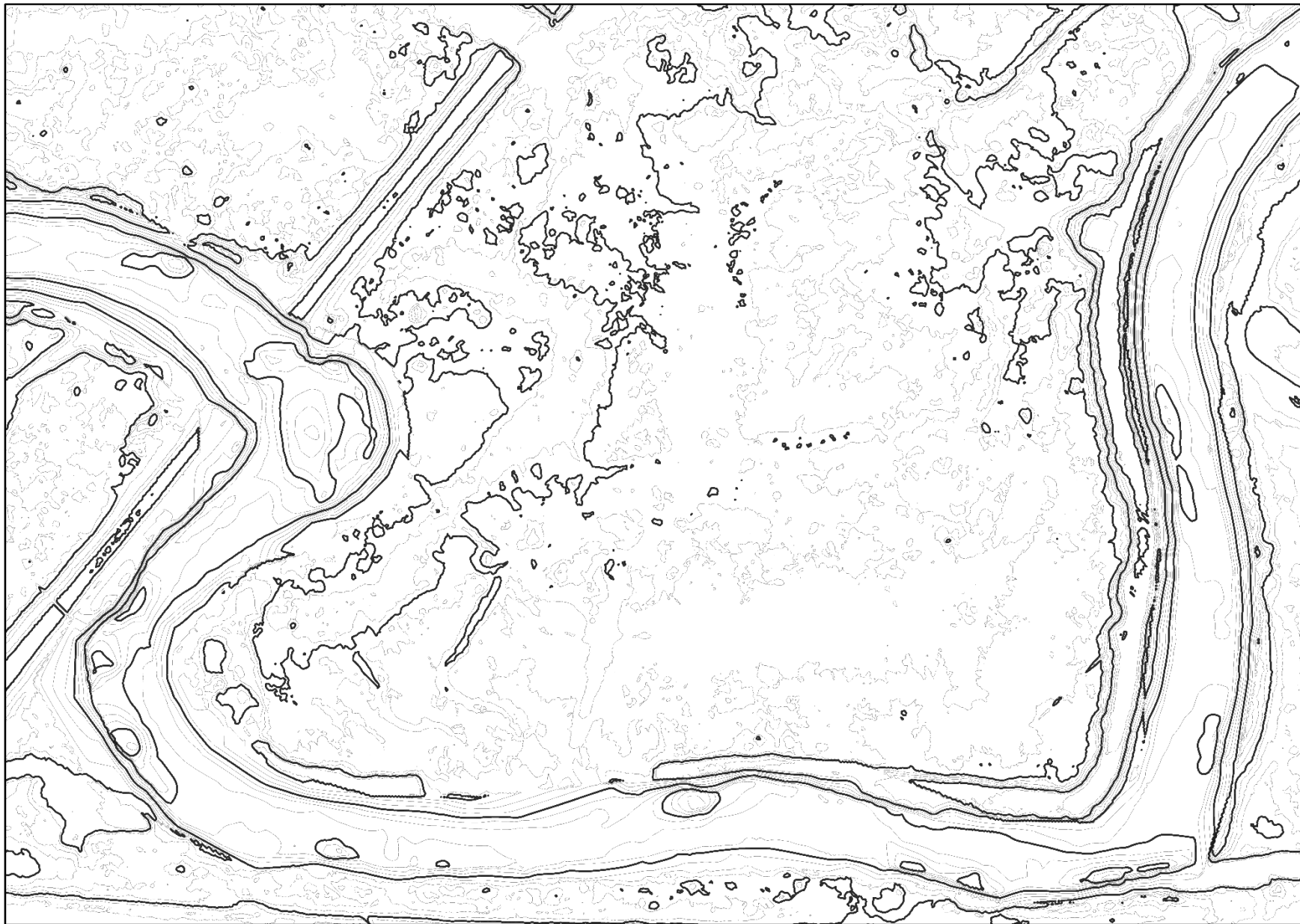
0.25 m Contour

[Print this Page](#)

TIER 1 - Valley & Flow Units

Valley Unit	Flow Unit
In-Channel	Submerged
Out-of-Channel	Emergent
	High

EXERCISE 4: MAP IN CHANNEL SHAPES (CONCAVITIES 1st, CONVEXITIES 2nd, PLANAR 3rd, TRANSITIONS)



0 10 20 30 40 50 Meters

1 m Contour

0.25 m Contour



Concave In-Channel (i.e. Pools)



Convex In-Channel Features (i.e. Bars)

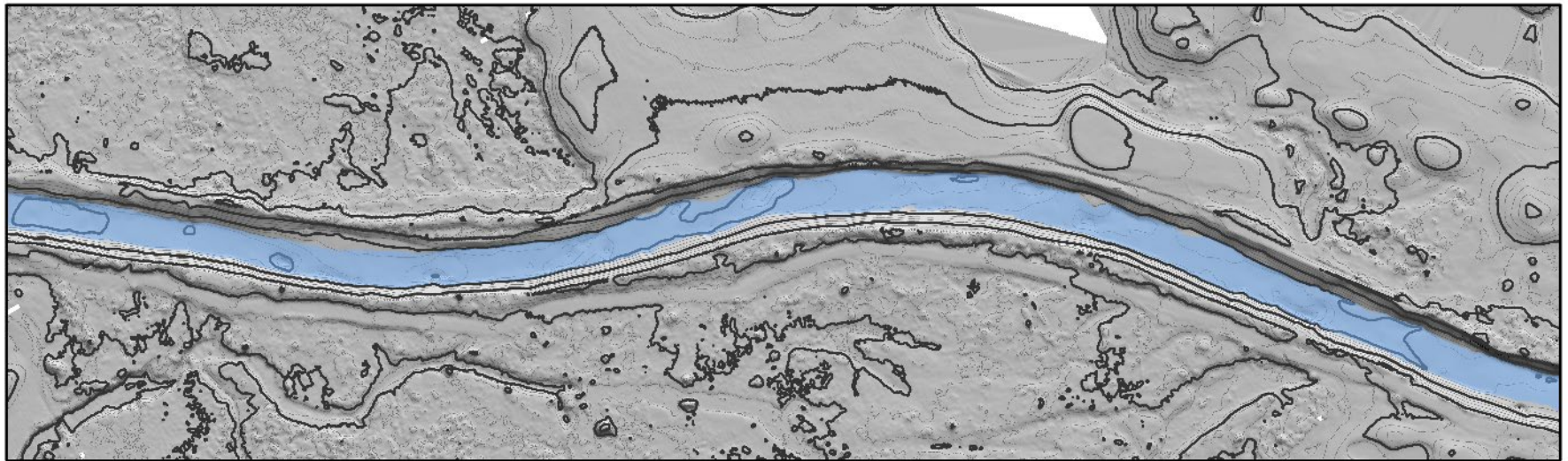


Planar In-Channel Features

[Print this Page](#)

EXERCISE 5 – MAP THALWEG

Print this Page



25 cm Contour Interval
Flow is right to left

Thalweg
WaterExtent
Centerline

0 25 50 75 100 125 Meters



As A Boater, Identifying Structural Elements Is Critical!

Rio Ara – Above Broto



<https://vimeo.com/68327211>

[Watch the Video](https://vimeo.com/68327211) & Identify S.E.s



QUESTIONS?

Post any Questions or Comments in
[Discussion Board for Module 1](#)