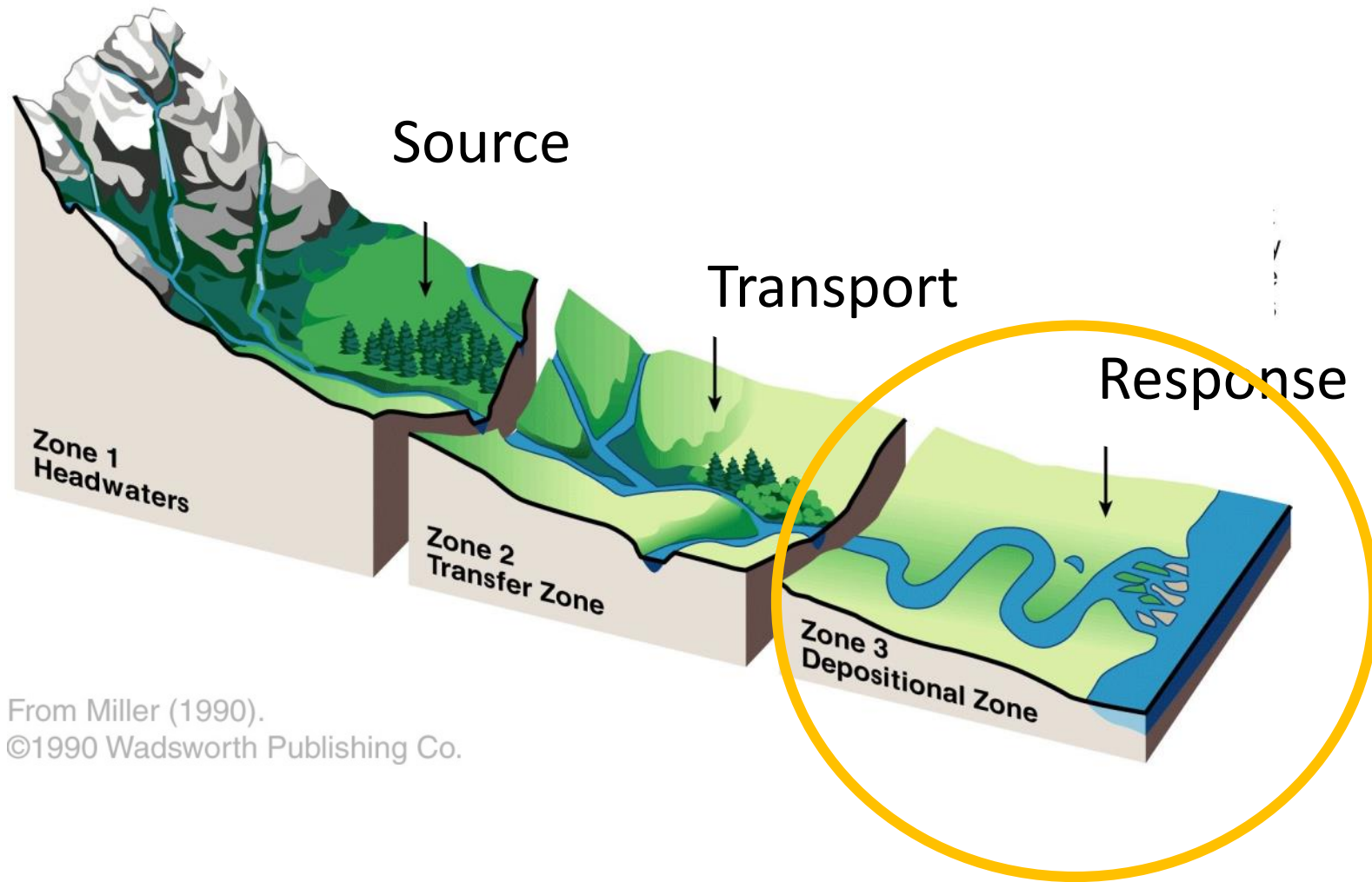


Identifying Appropriate Valley Types for Stage 0



Photo: Jay Mather



From Miller (1990).
©1990 Wadsworth Publishing Co.



05.18.2015 10:18

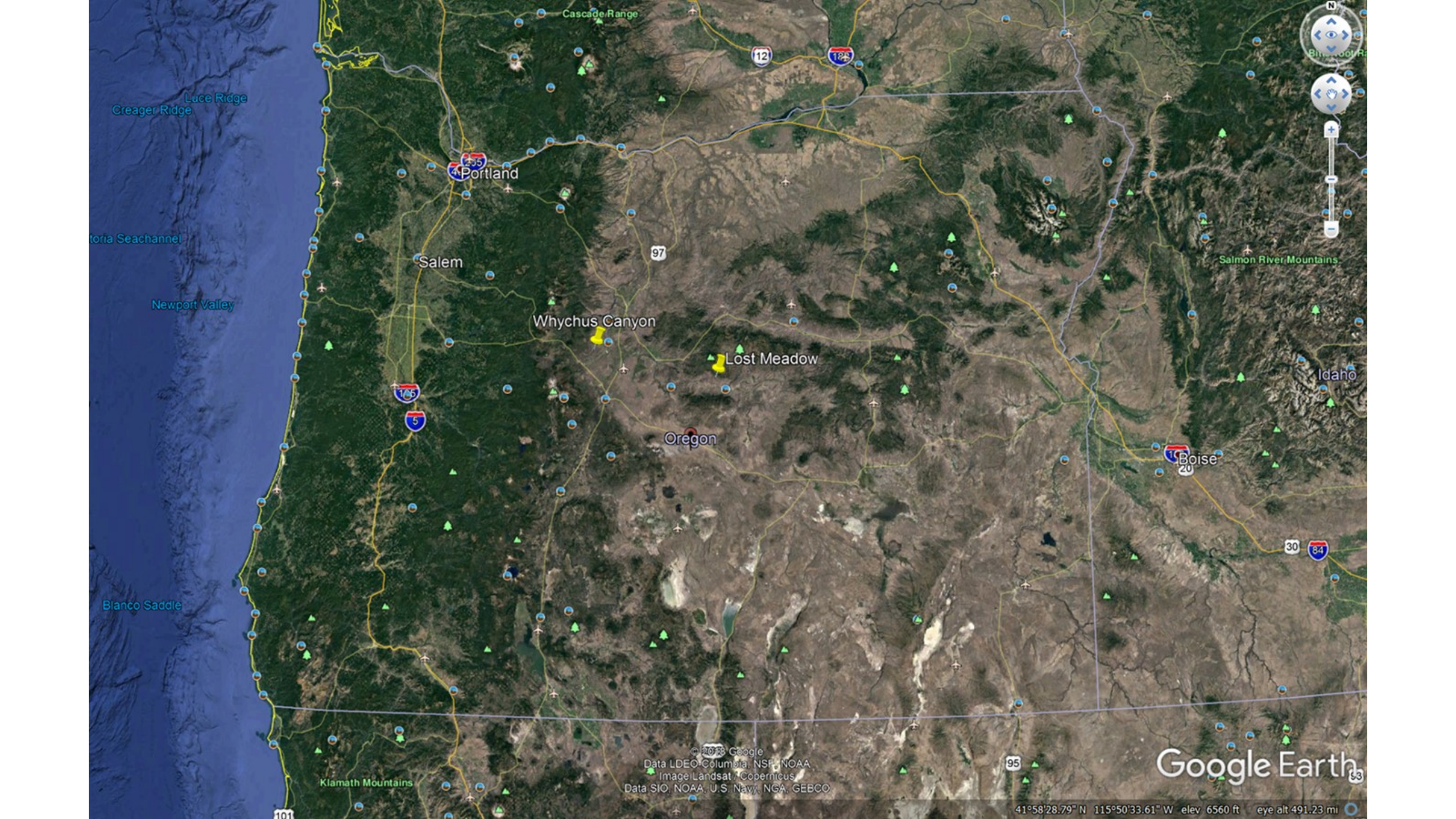




© 2018 Google
Image Landsat / Copernicus
Data SIO, NOAA, U.S. Navy, NGA, GEBCO
US Dept of State Geographer

Google Earth

Imagery Date: 12/13/2015 37°05'24.86" N 95°42'46.40" W elev 834 ft eye alt 3915.54 mi



Portland

Salem

Whychus Canyon

Lost Meadow

Oregon

Boise

Idaho

© 2023 Google
Data LDEO, Columbia, NSF, NOAA
Image Landsat, Copernicus
Data SIO, NOAA, U.S. Navy, NGA, GEBCO

Google Earth

41°58'28.79" N 115°50'33.61" W elev 6560 ft eye alt 491.23 mi

Search

Sisters, OR, USA Search

ex: Pizza near Clayville, NY

Get Directions History

Location pin icon Sisters

Location pin icon Sisters

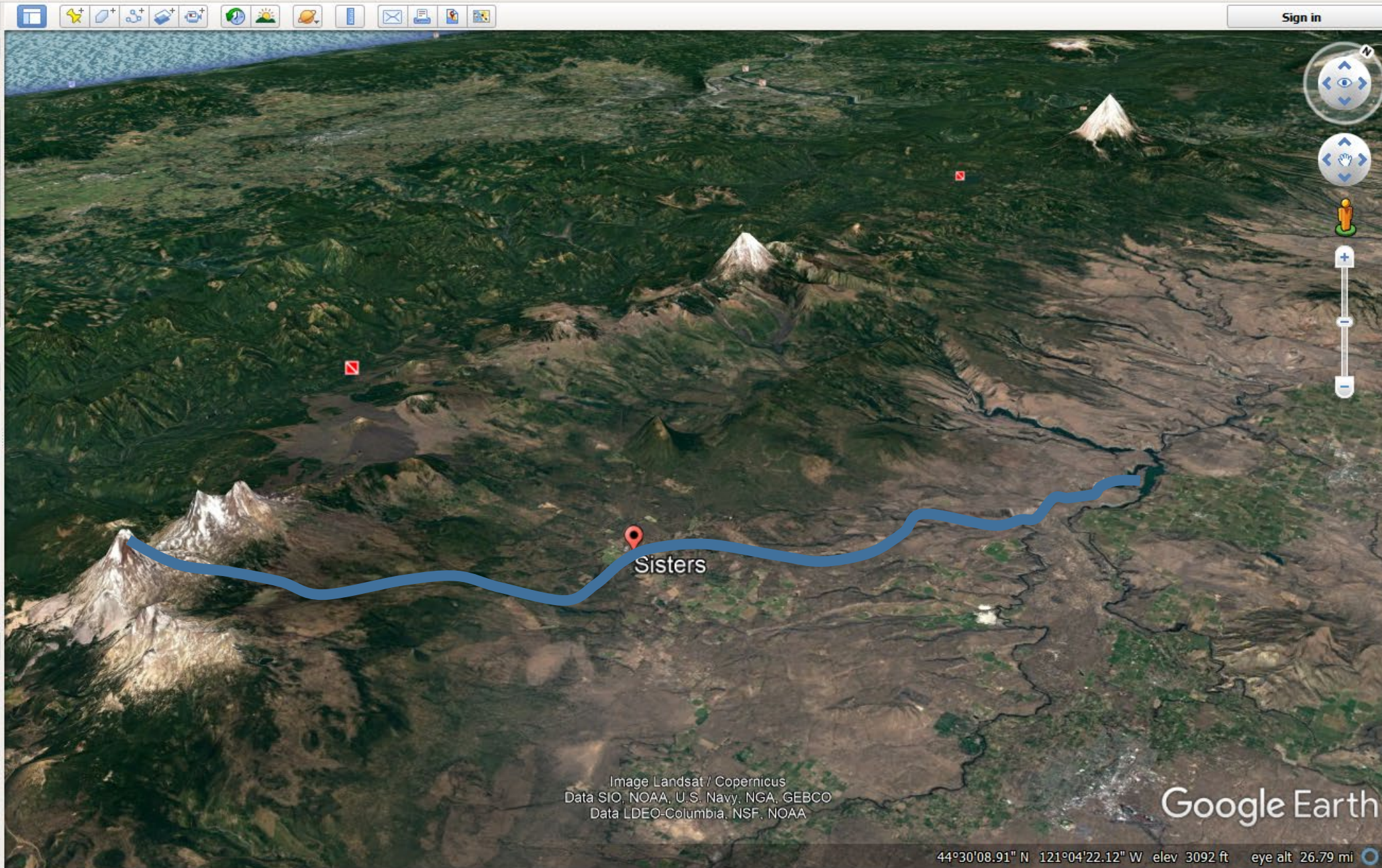
Places

- My Places
- Sightseeing Tour
 - Make sure 3D Buildings layer is checked
- Temporary Places

Search bar with up/down arrows

Layers

- Primary Database
- Borders and Labels
- Places
- Photos
- Roads
- 3D Buildings
- Ocean
- Weather
- Gallery
- Global Awareness
- More

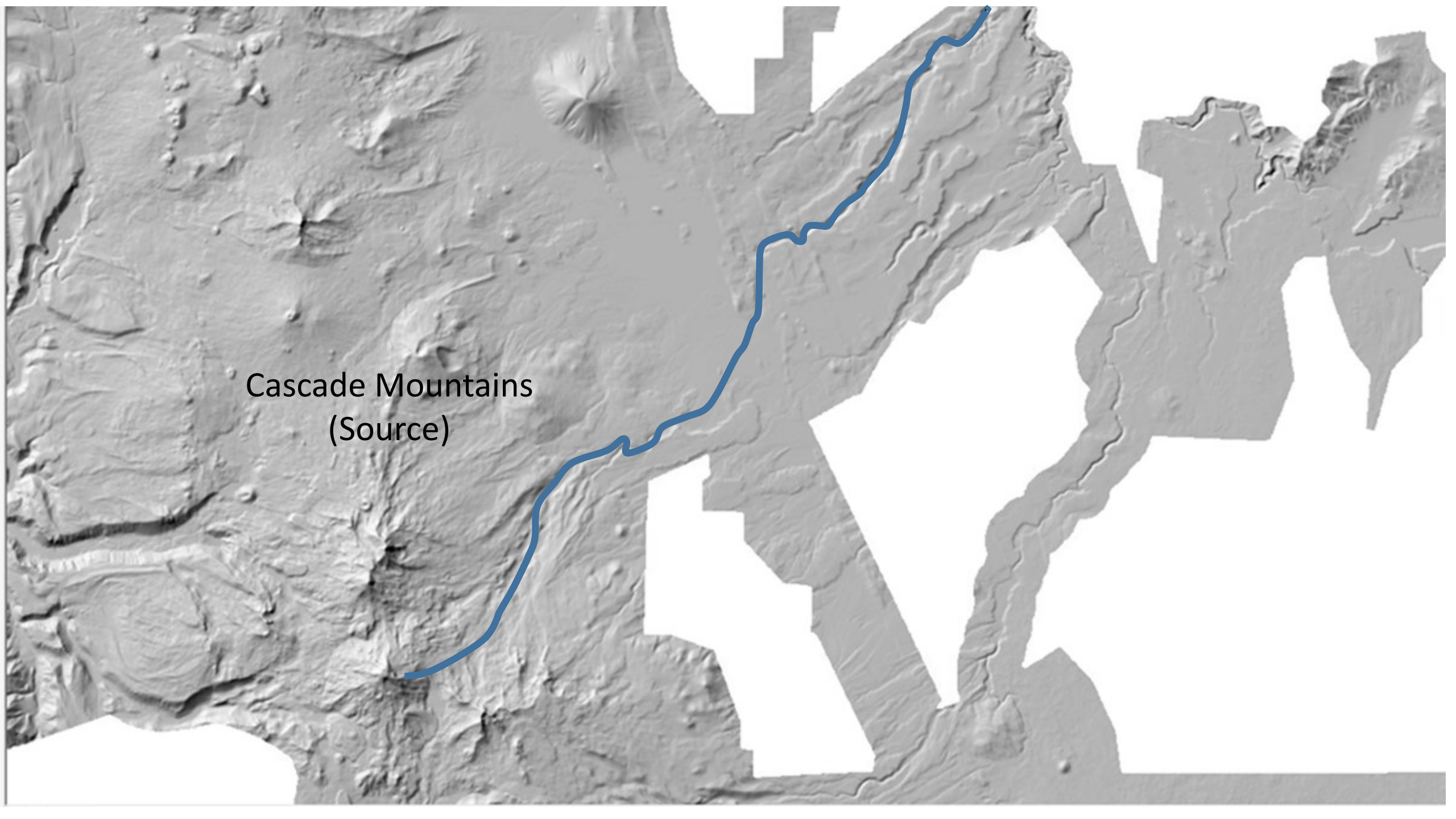


Navigation controls including a compass, a hand icon for panning, a person icon for street view, and a vertical zoom slider with plus and minus buttons.

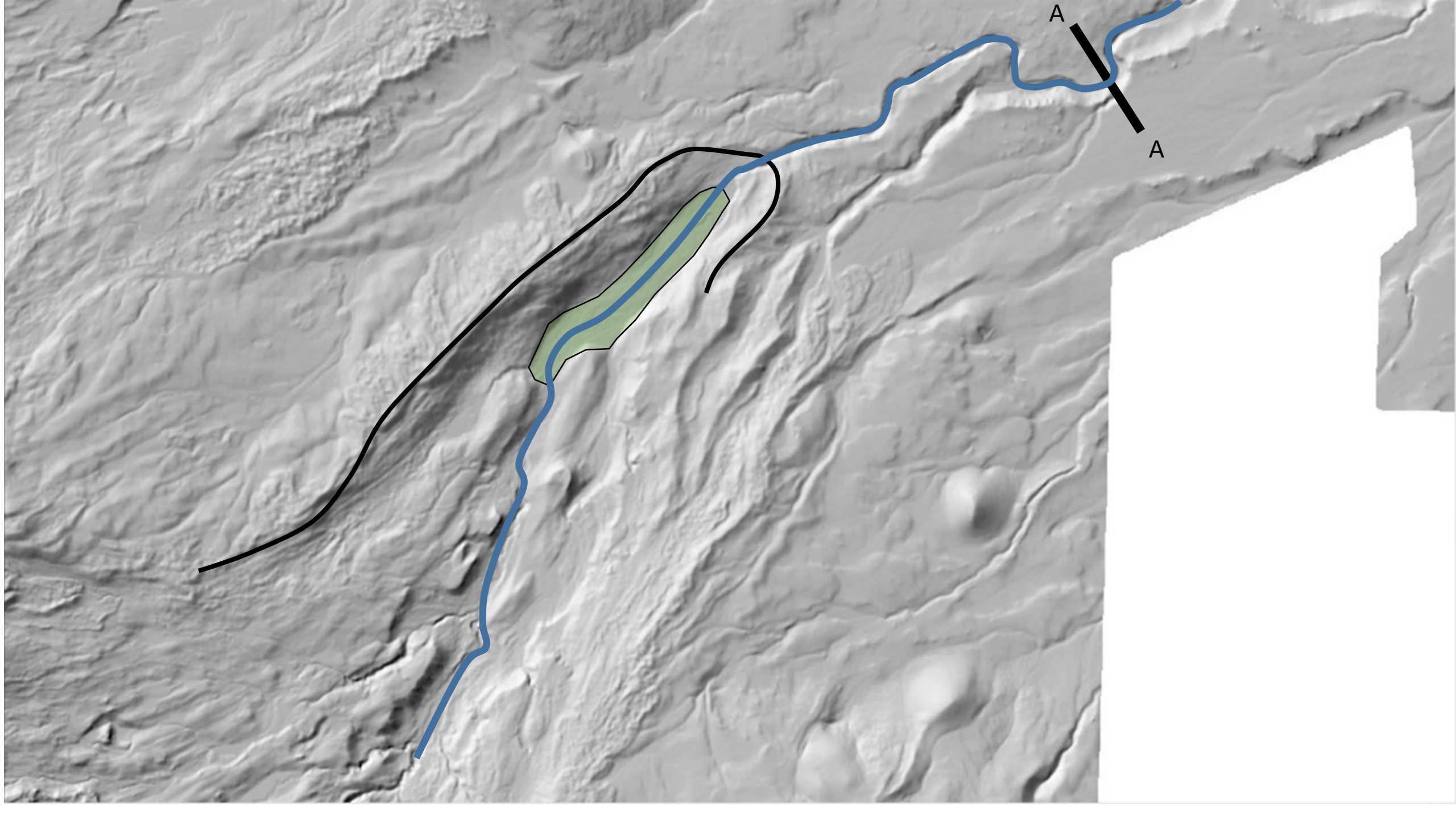
Image Landsat / Copernicus
 Data SIO, NOAA, U.S. Navy, NGA, GEBCO
 Data LDEO-Columbia, NSF, NOAA

Google Earth

44°30'08.91" N 121°04'22.12" W elev 3092 ft eye alt 26.79 mi



Cascade Mountains
(Source)



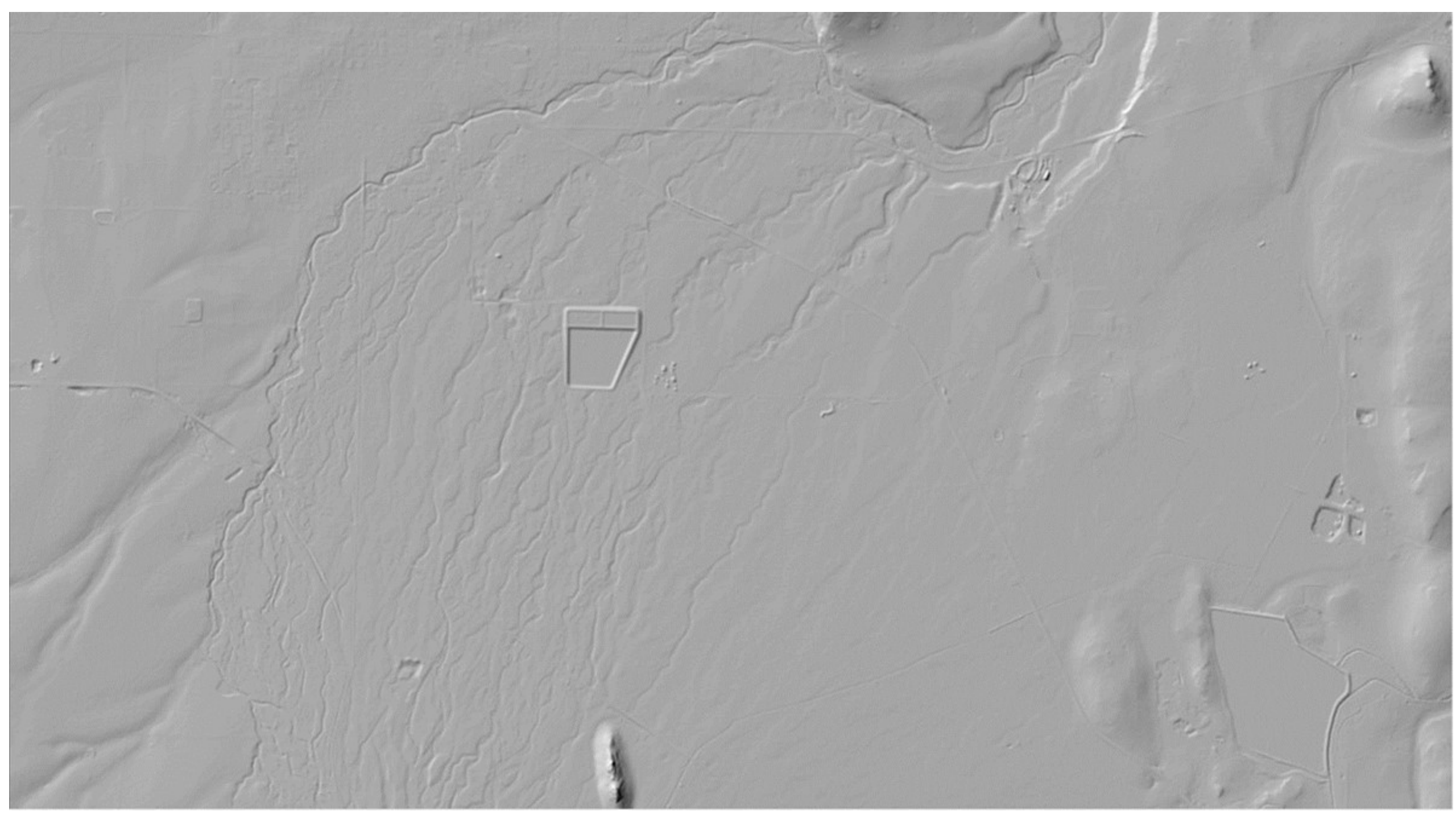


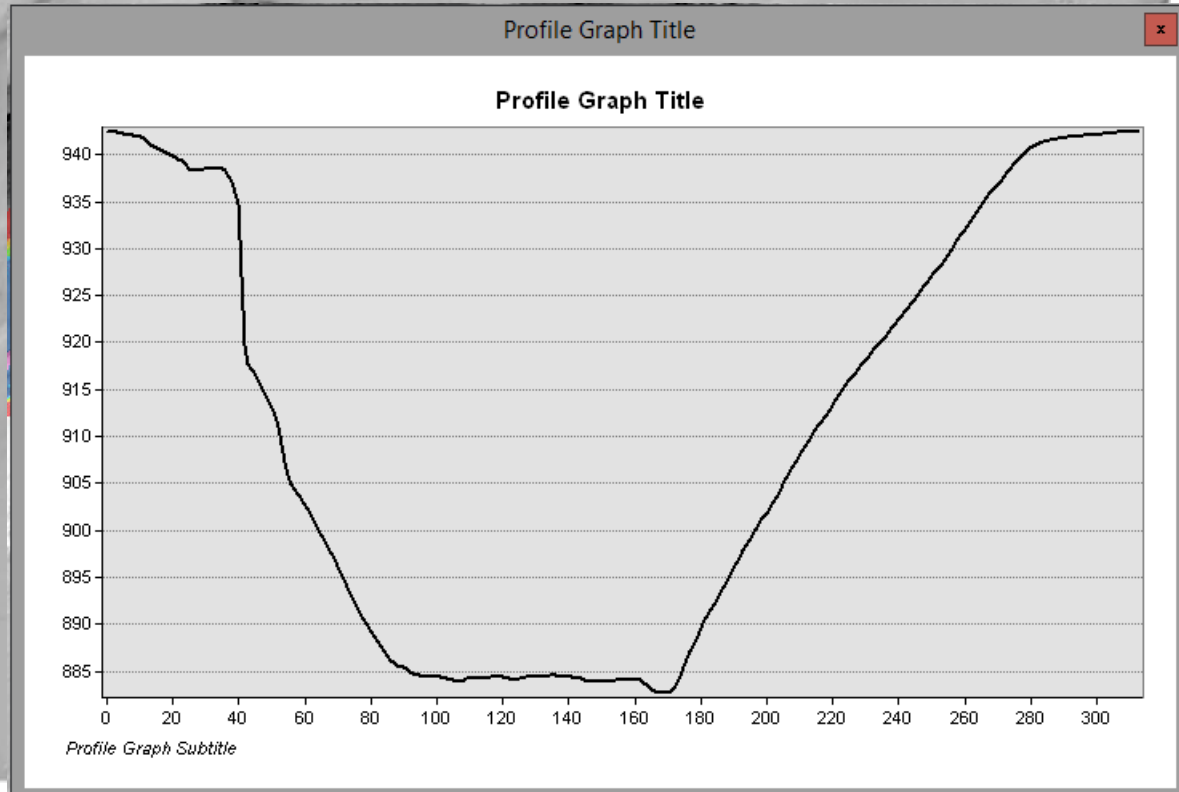
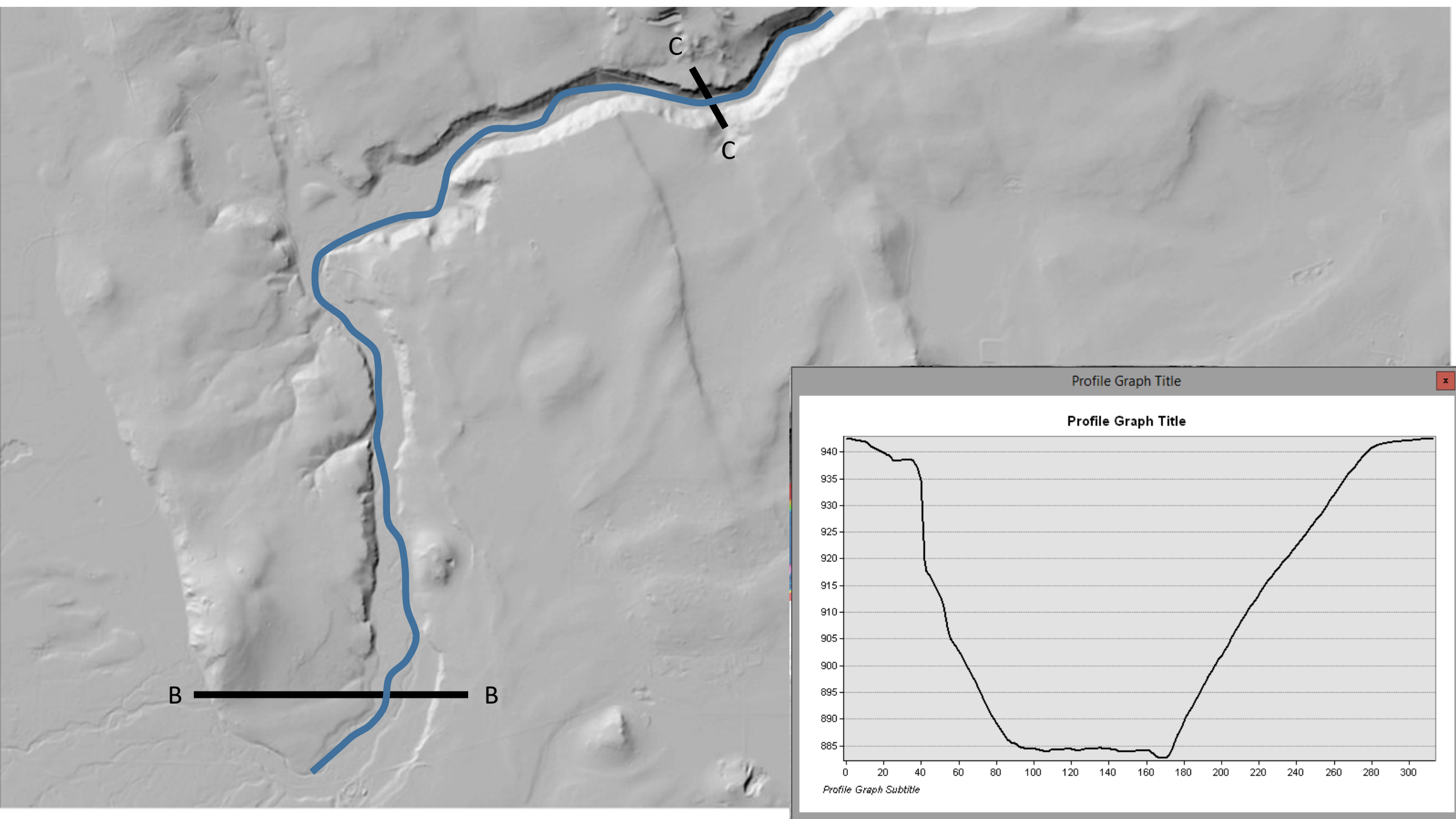
A

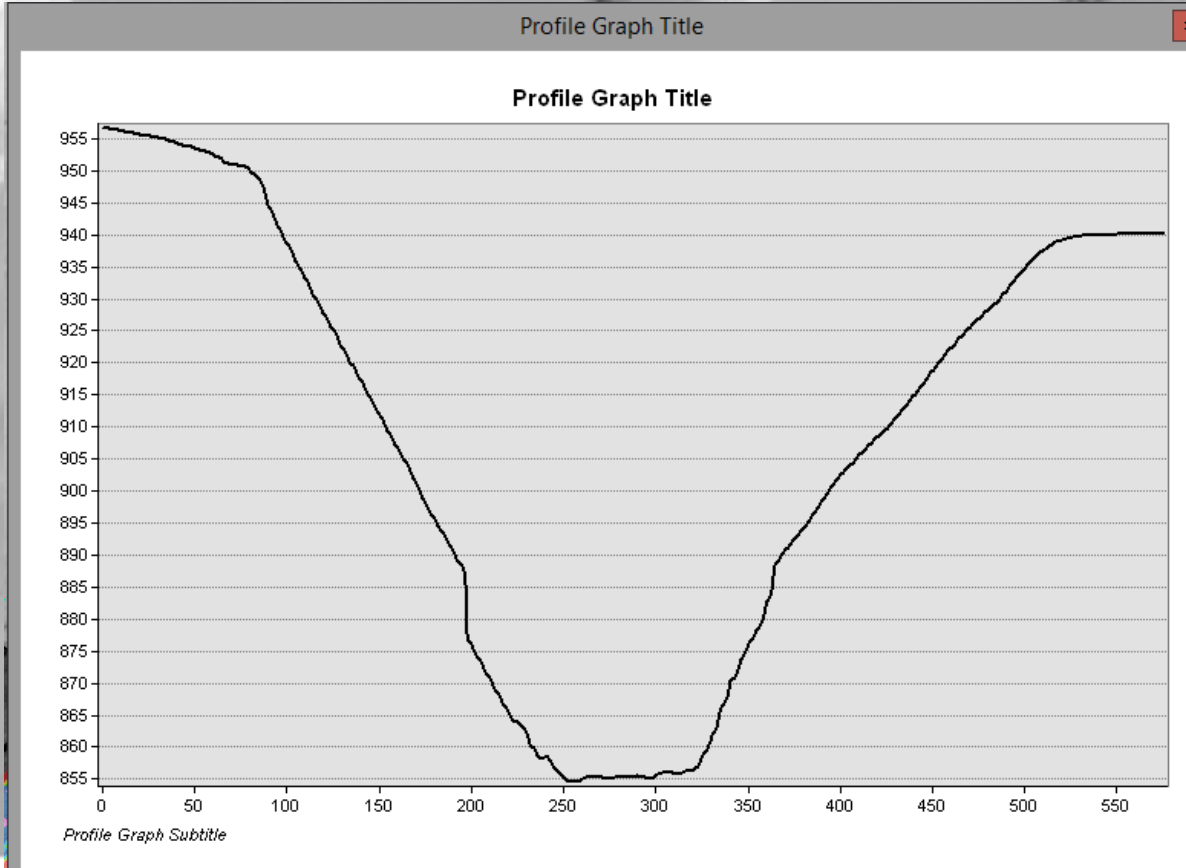
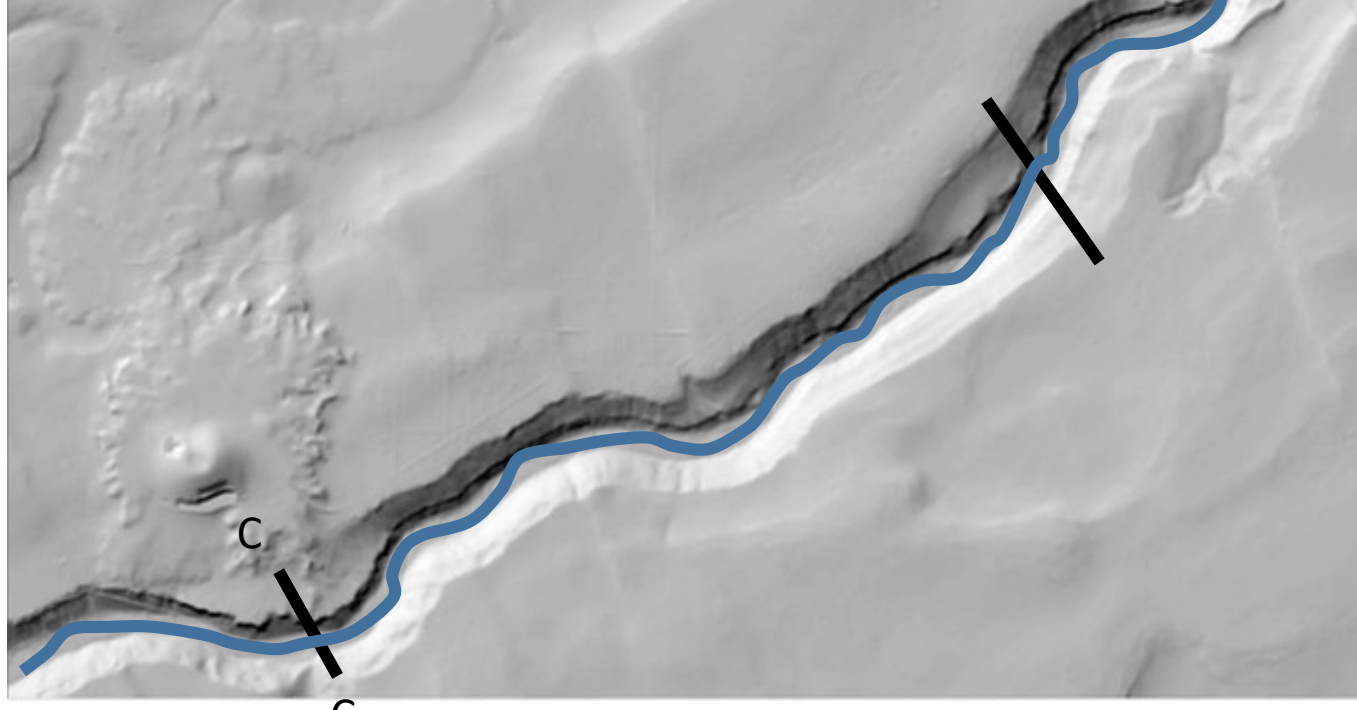
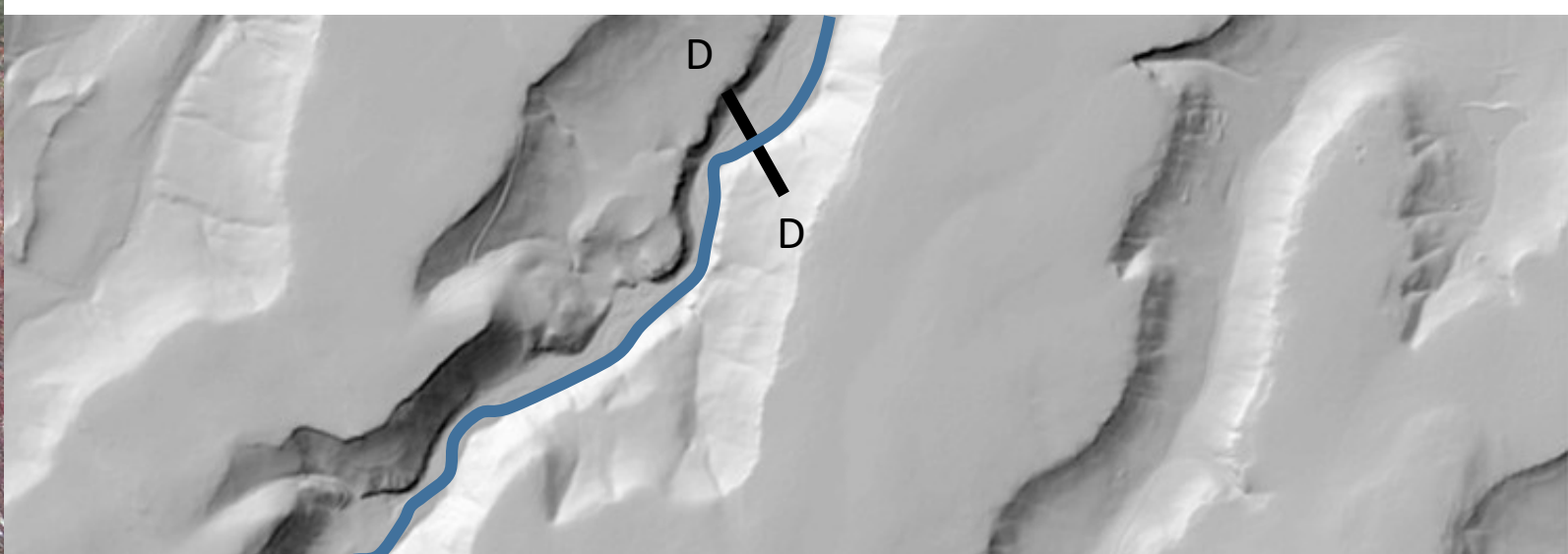
A

B

B







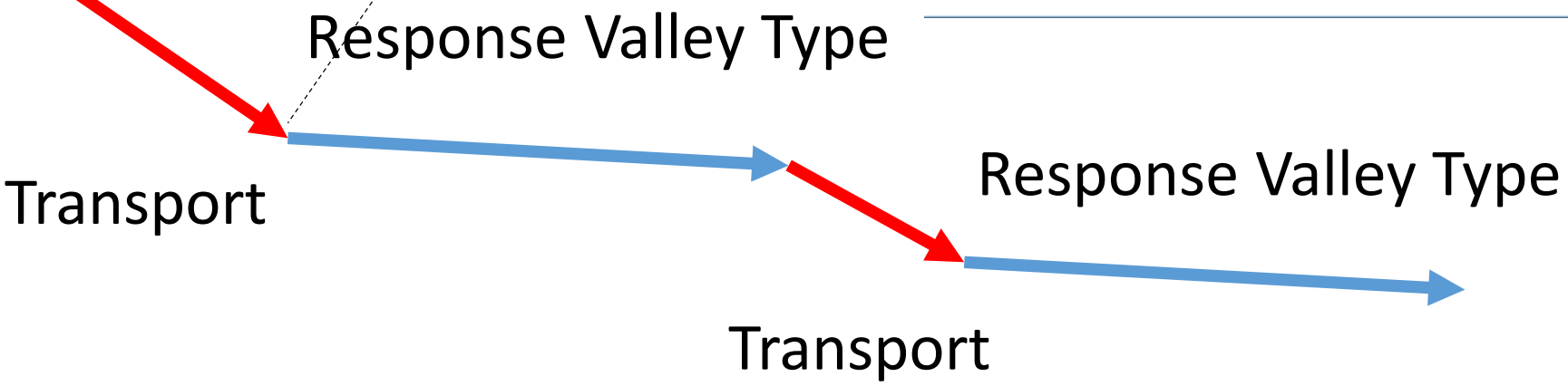
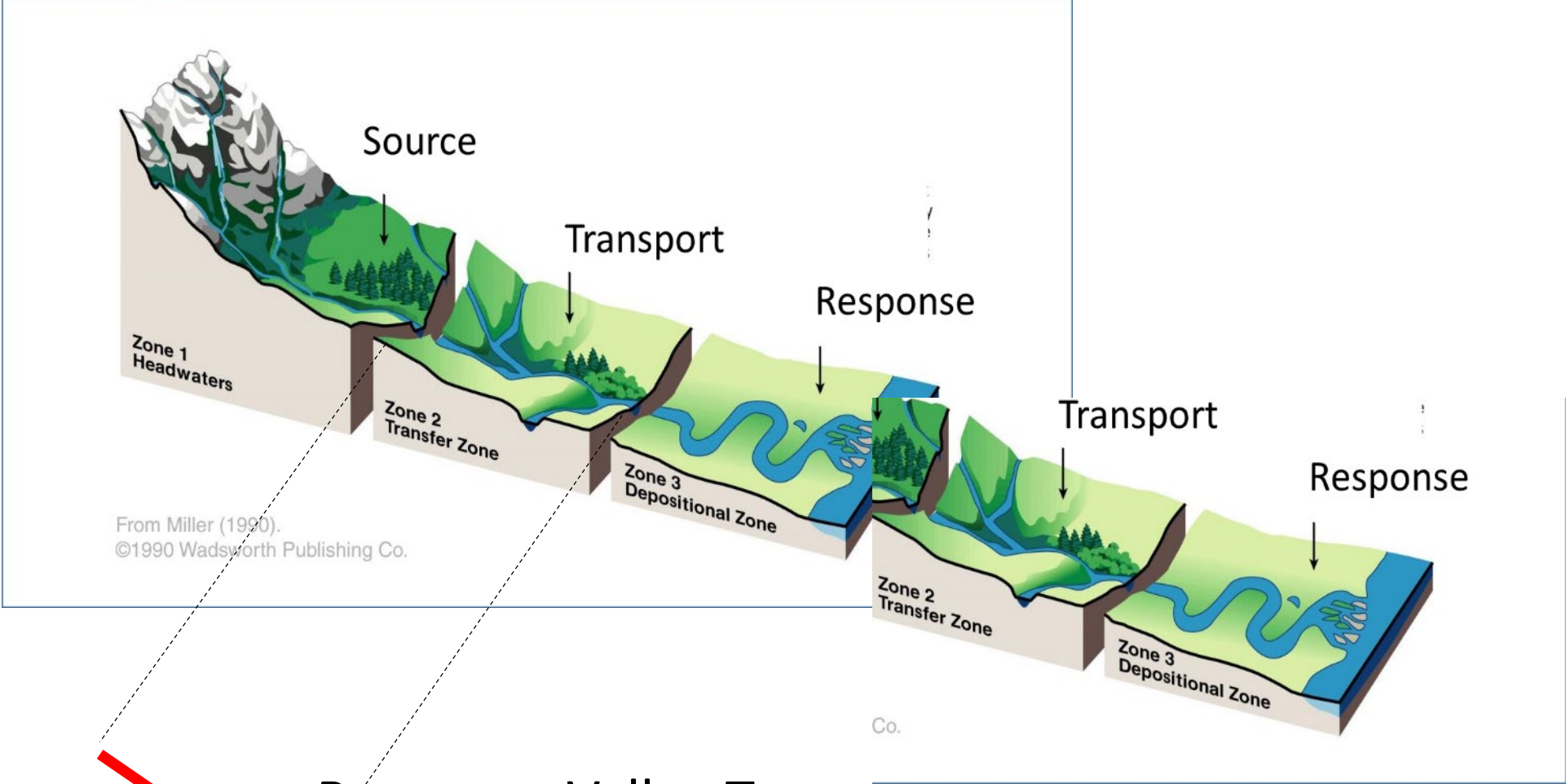
Geomorphic Control

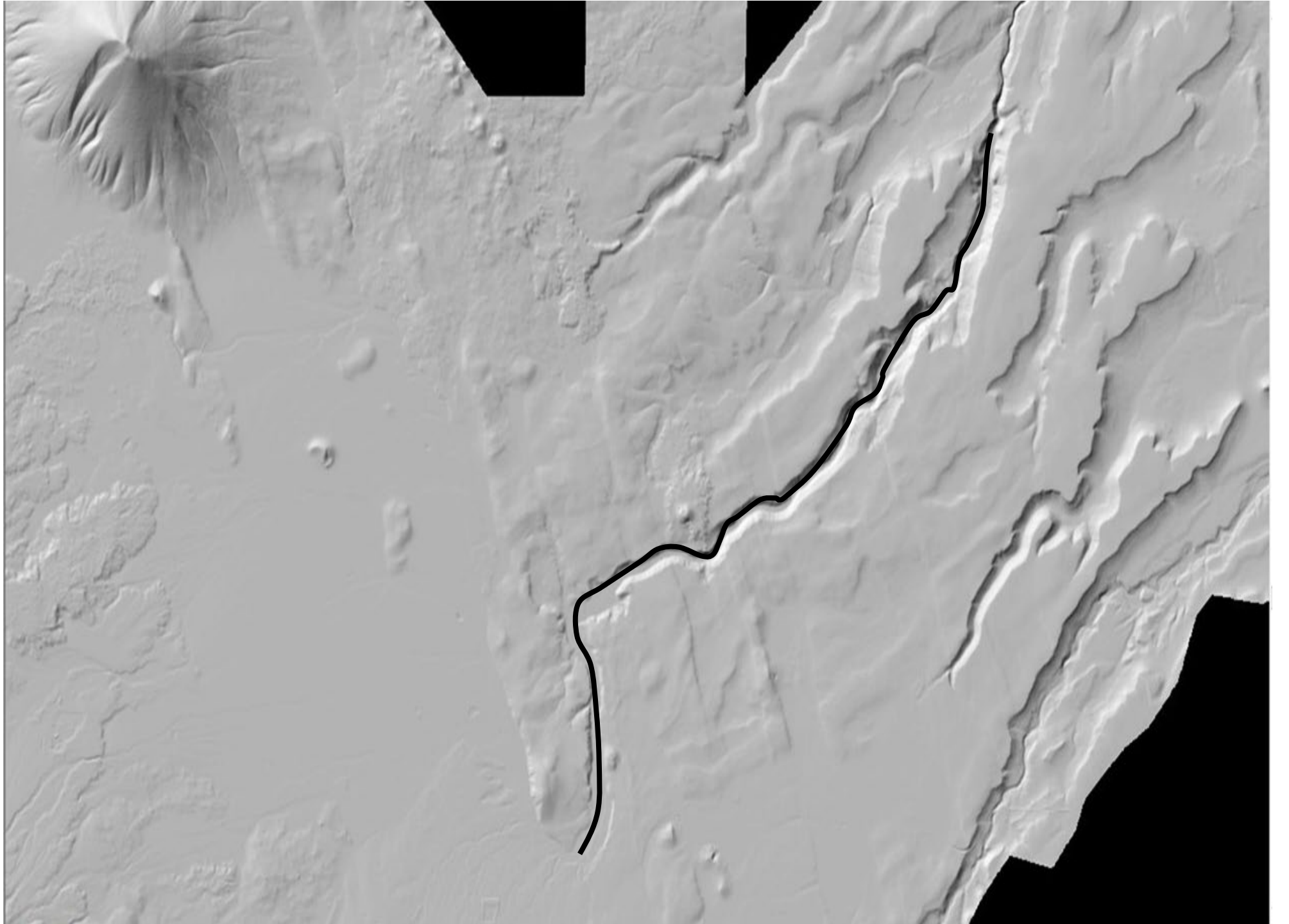


D

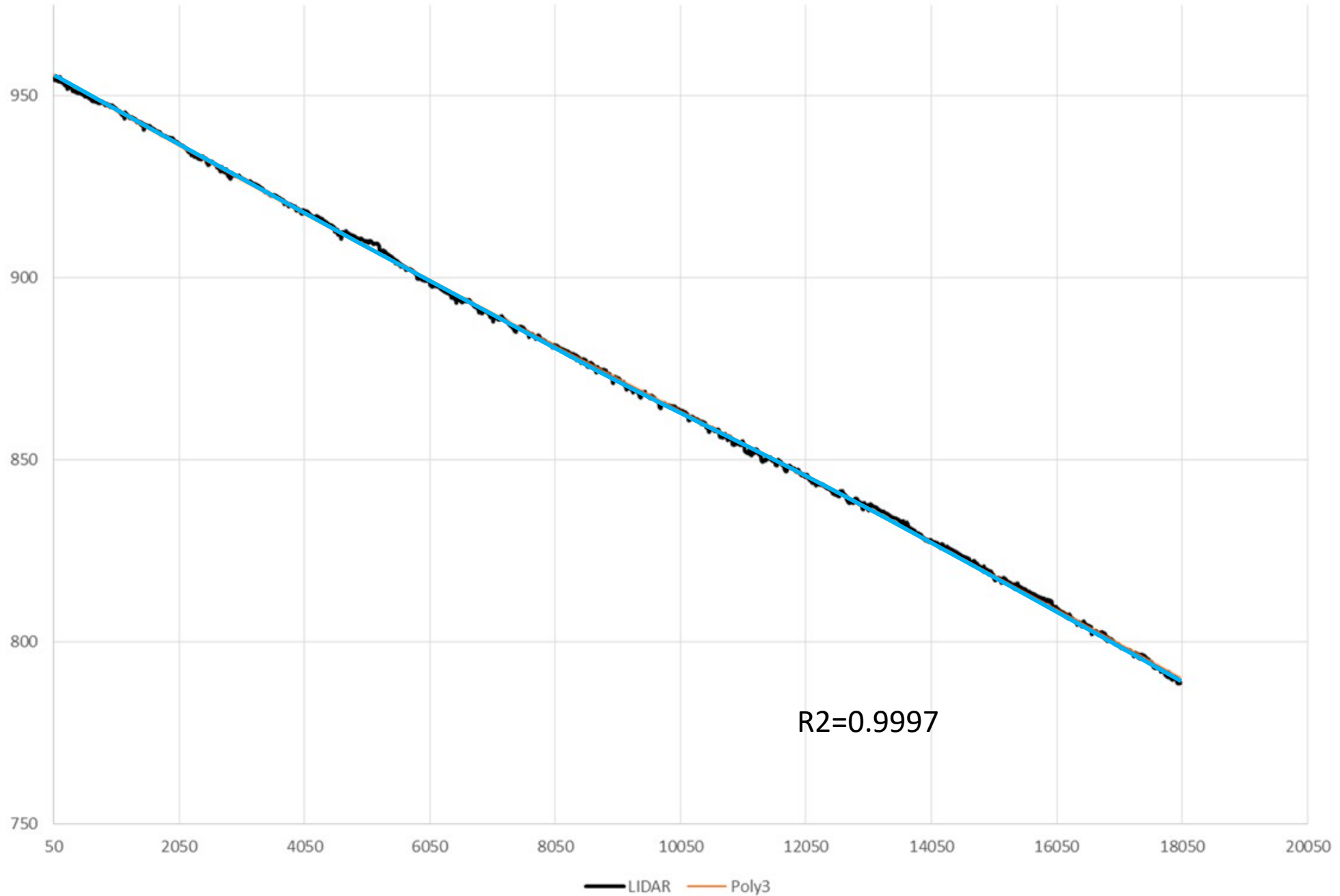


D

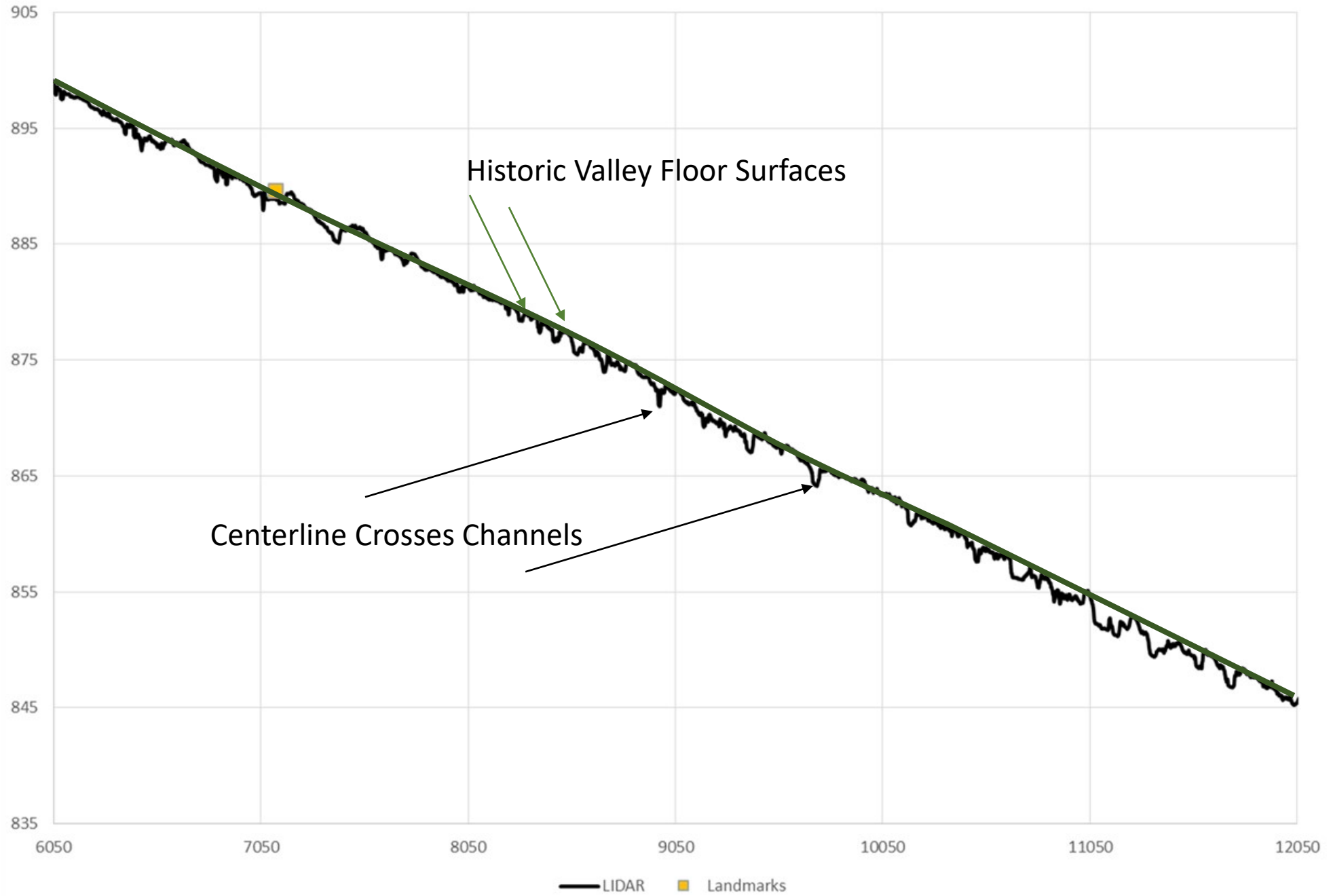




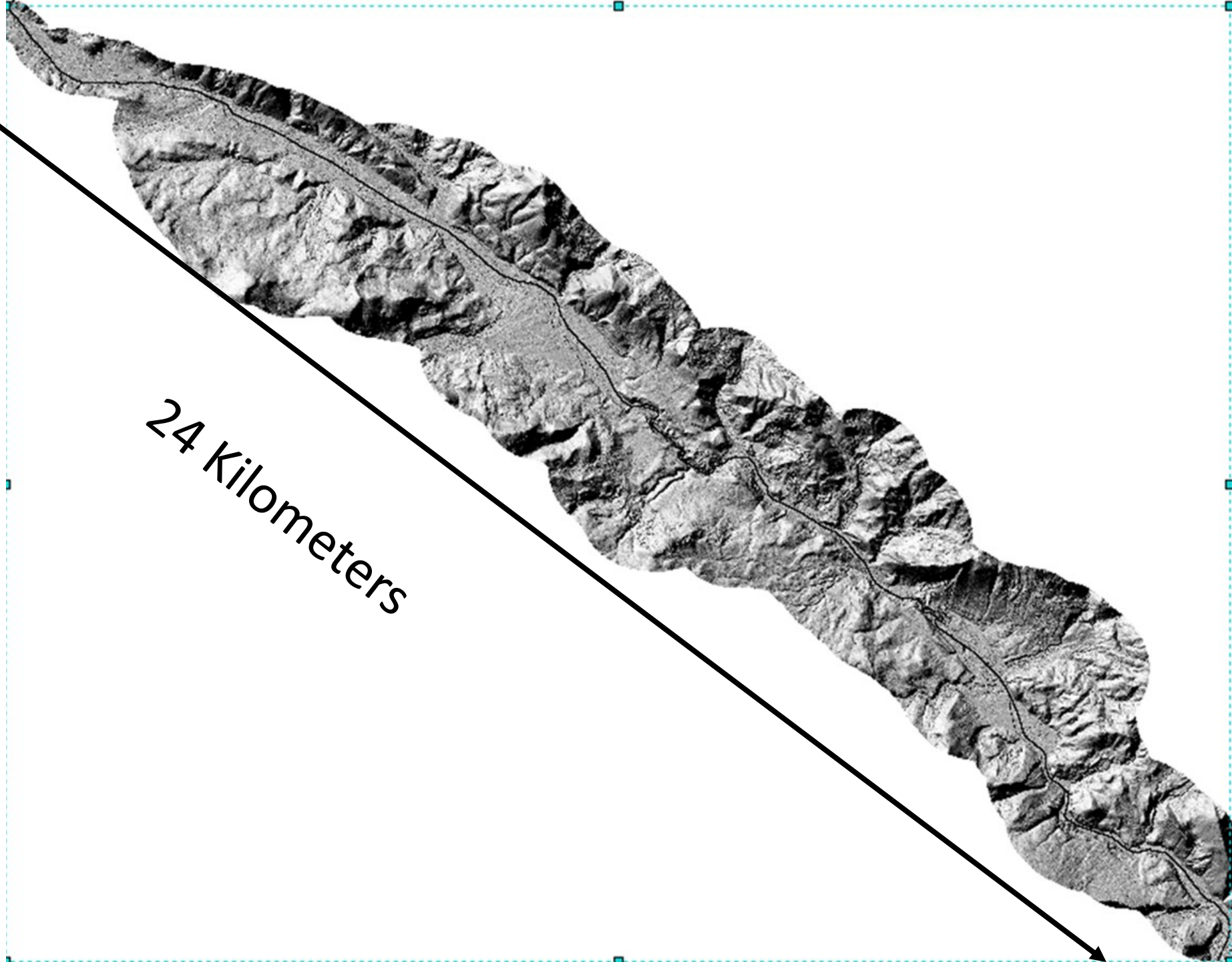
Whychus Creek Vally Profile Sisters to Transport Canyon



Whychus Creek Vally Profile Sisters to Transport Canyon



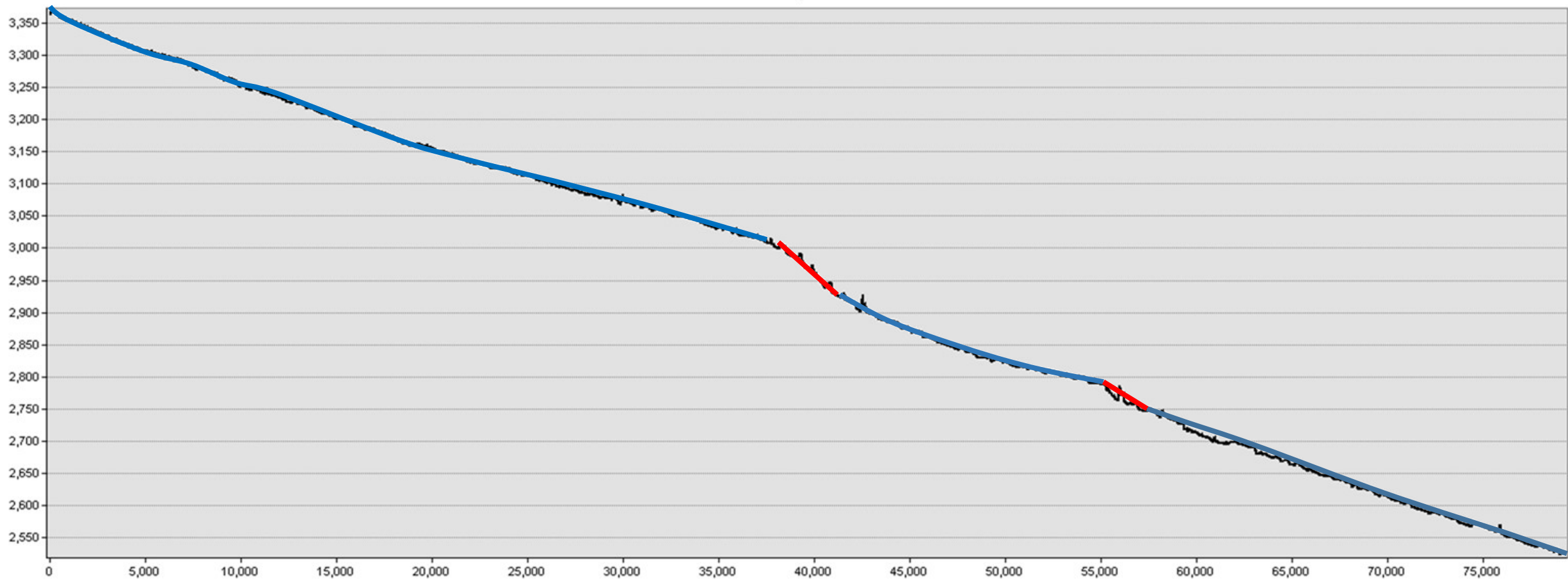
	A	B	C	D	E	F	G
1	OID	LOCATION	LIDAR	LINEAR	POLY2	POLY3	POLY4
2	-1	1	955.6659546	954.9439087	955.2911987	956.298645	954.9759
3	-1	2	955.5186157	954.9348145	955.2819214	956.2886963	954.9675
4	-1	3	955.3199463	954.9256592	955.2727051	956.2788086	954.959
5	-1	4	955.1220703	954.9165649	955.2634888	956.2689209	954.9506
6	-1	5	954.9539795	954.9074707	955.2542725	956.2590332	954.9422
7	-1	6	954.6061401	954.8983154	955.2449951	956.2491455	954.9337
8	-1	7	954.1876221	954.8892212	955.2357788	956.2391968	954.9253
9	-1	8	953.8937988	954.880127	955.2265625	956.2293091	954.9169
10	-1	9	953.6951294	954.8709717	955.2173462	956.2194214	954.9084
11	-1	10	953.6150513	954.8618774	955.2081299	956.2095337	954.9
12	-1	11	953.6266479	954.8527832	955.1988525	956.199646	954.8915
13	-1	12	953.6580811	954.8436279	955.1896362	956.1896973	954.8831
14	-1	13	953.6630859	954.8345337	955.1804199	956.1798096	954.8747
15	-1	14	953.7996826	954.8254395	955.1712036	956.1699219	954.8663
16	-1	15	953.9911499	954.8162842	955.1619263	956.1600342	954.8578
17	-1	16	954.2651978	954.8071899	955.15271	956.1501465	954.8494
18	-1	17	954.538147	954.7980957	955.1434937	956.1401978	954.8409
19	-1	18	954.7077026	954.7889404	955.1342773	956.1303101	954.8325
20	-1	19	954.7813721	954.7798462	955.125061	956.1204224	954.824
21	-1	20	954.800293	954.770752	955.1157837	956.1105347	954.8156
22	-1	21	954.8068237	954.7615967	955.1065674	956.100647	954.8071
23	-1	22	954.8706055	954.7525024	955.0973511	956.0907593	954.7987
24	-1	23	954.9615479	954.7434082	955.0881348	956.0808716	954.7903
25	-1	24	954.9680786	954.7342529	955.0788574	956.0709229	954.7818
26	-1	25	954.9257202	954.7251587	955.0696411	956.0610352	954.7734
27	-1	26	954.8828735	954.7160645	955.0604248	956.0511475	954.765
28	-1	27	954.8496704	954.7069092	955.0512085	956.0412598	954.7565
29	-1	28	954.8248901	954.6978149	955.0419922	956.0313721	954.748
30	-1	29	954.8093872	954.6887207	955.0327148	956.0214844	954.7396
31	-1	30	954.769165	954.6795654	955.0234985	956.0115967	954.7311
32	-1	31	954.7626343	954.6704712	955.0142822	956.0016479	954.7227
33	-1	32	954.7836914	954.661377	955.0050659	955.9917603	954.7142
34	-1	33	954.7949829	954.6522217	954.9957886	955.9818726	954.7058
35	-1	34	954.7857666	954.6431274	954.9865723	955.9719849	954.6973
36	-1	35	954.7728882	954.6340332	954.977356	955.9620972	954.6889
37	-1	36	954.7828979	954.6248779	954.9681396	955.9522095	954.6805
38	-1	37	954.7954712	954.6157837	954.9589233	955.9423218	954.672
39	-1	38	954.8181152	954.6066895	954.949646	955.9324341	954.6636



24 Kilometers

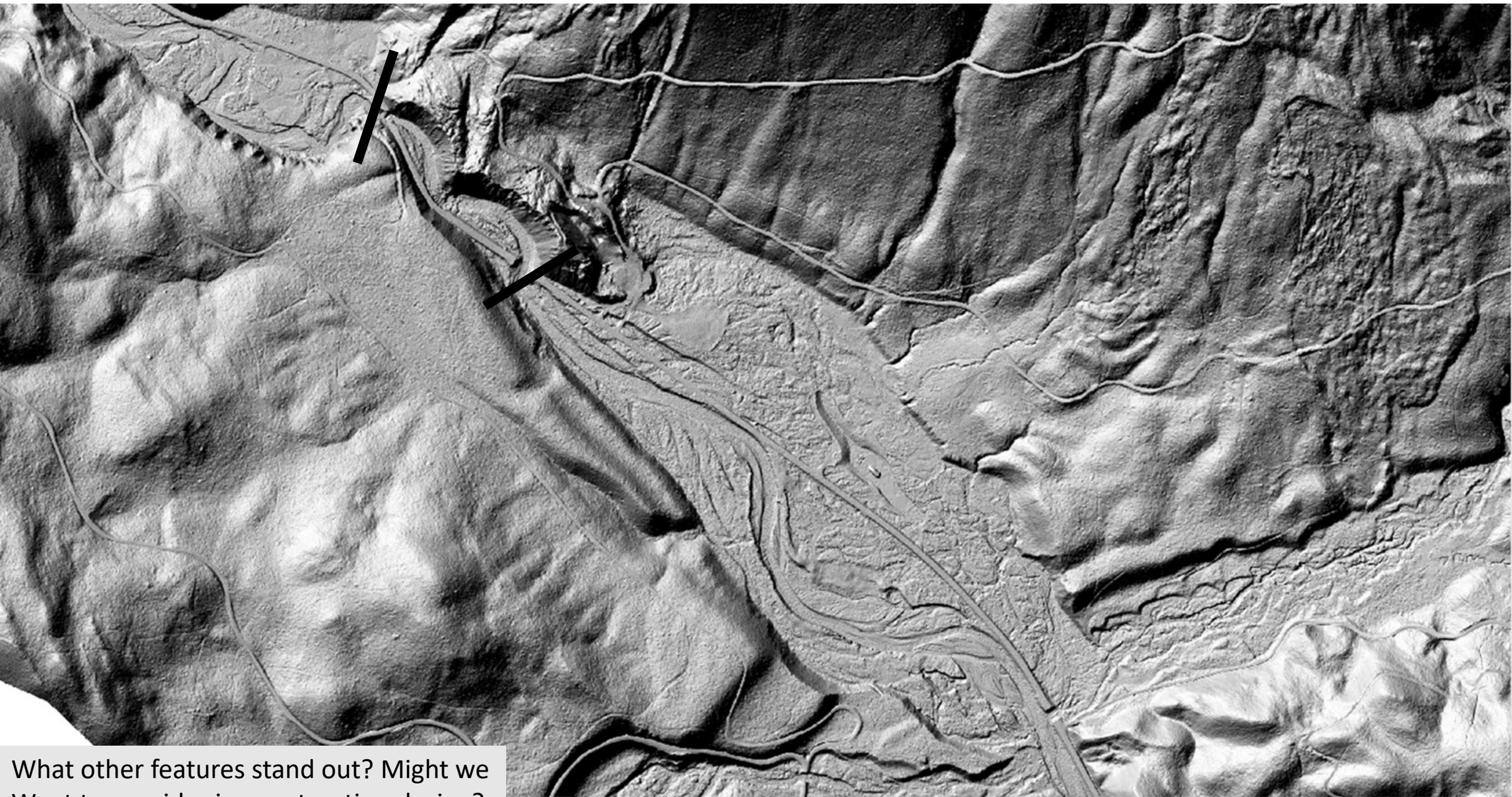
Profile Graph Title

Profile Graph Title

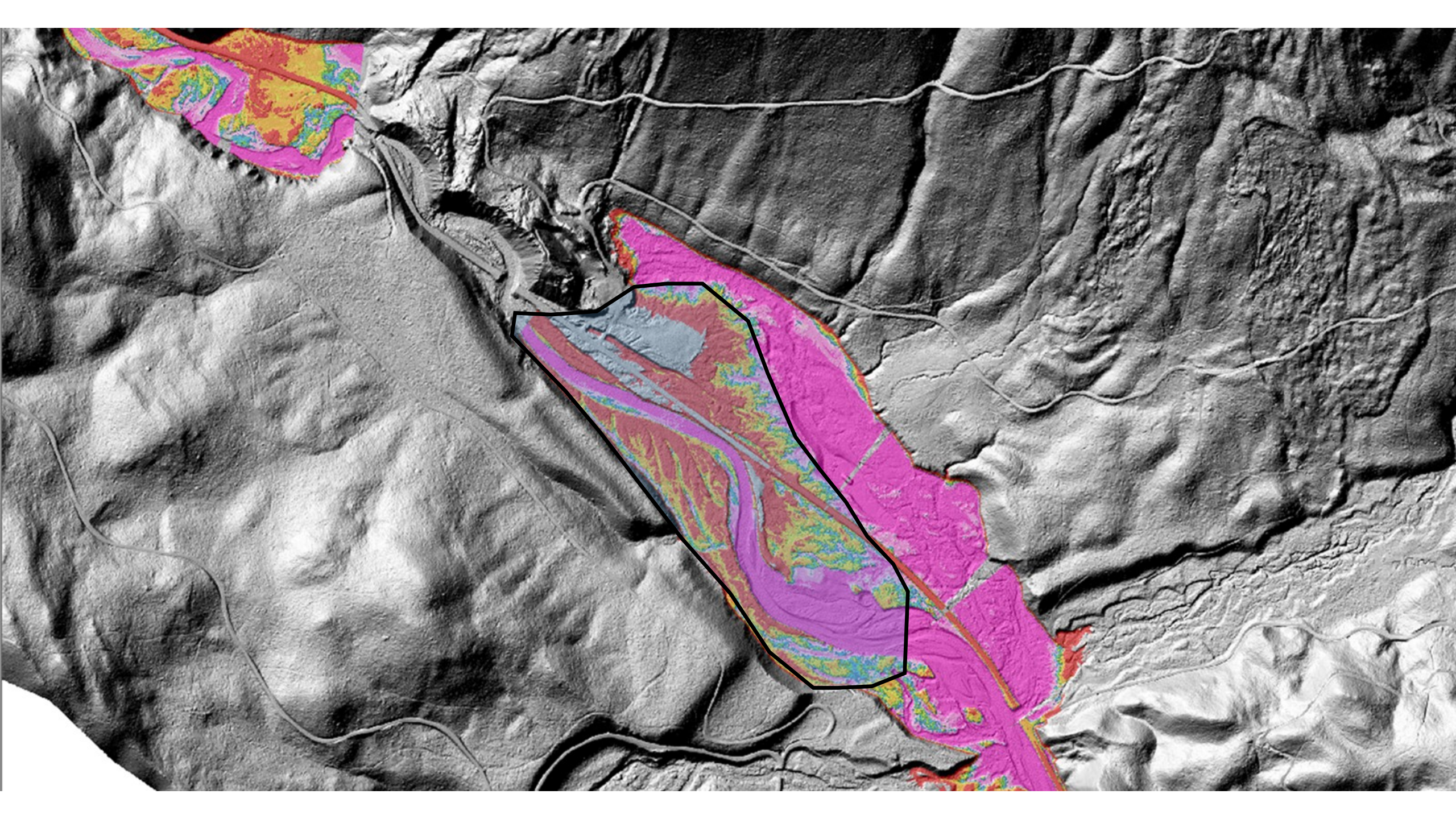


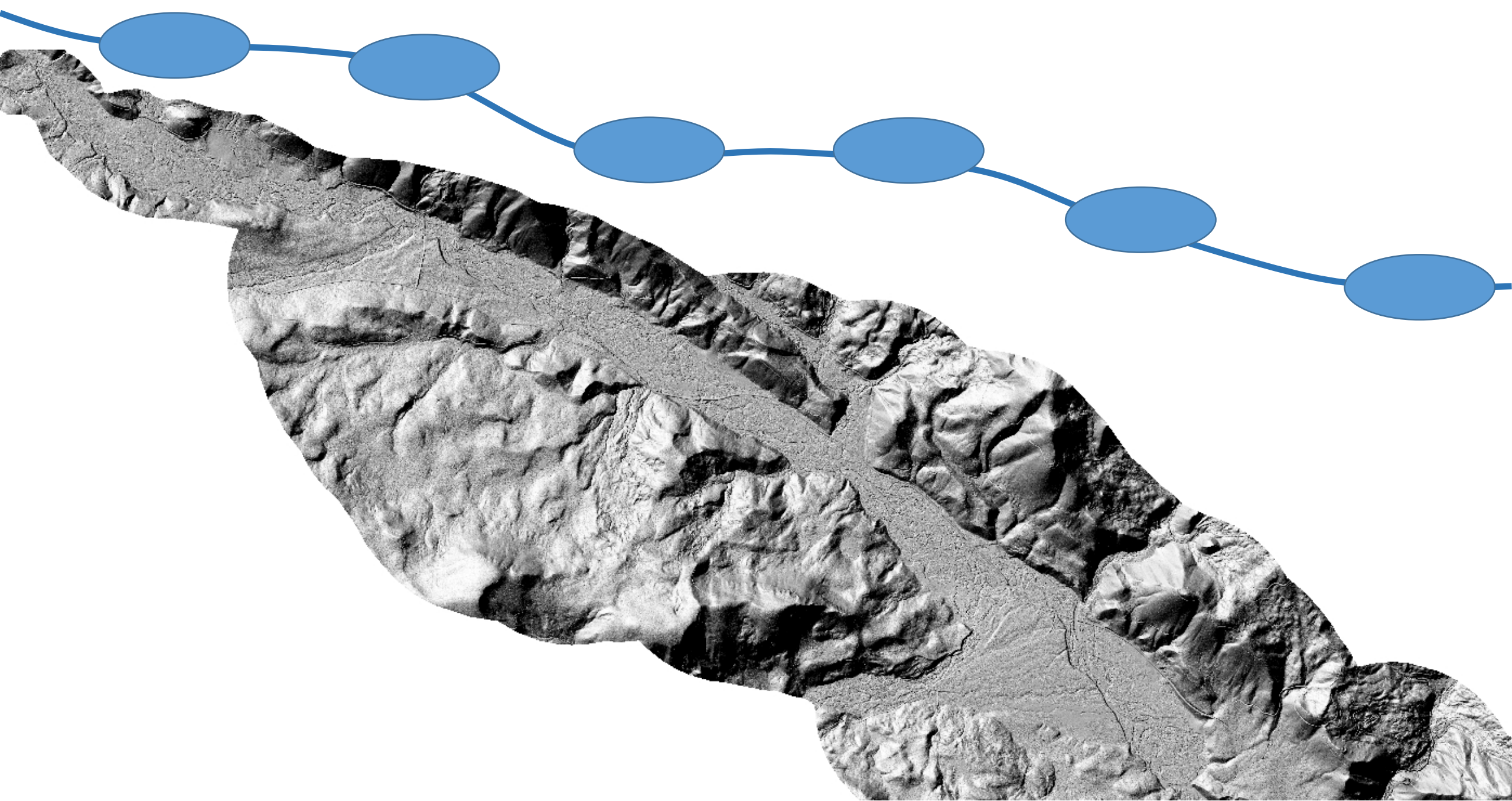
Profile Graph Subtitle

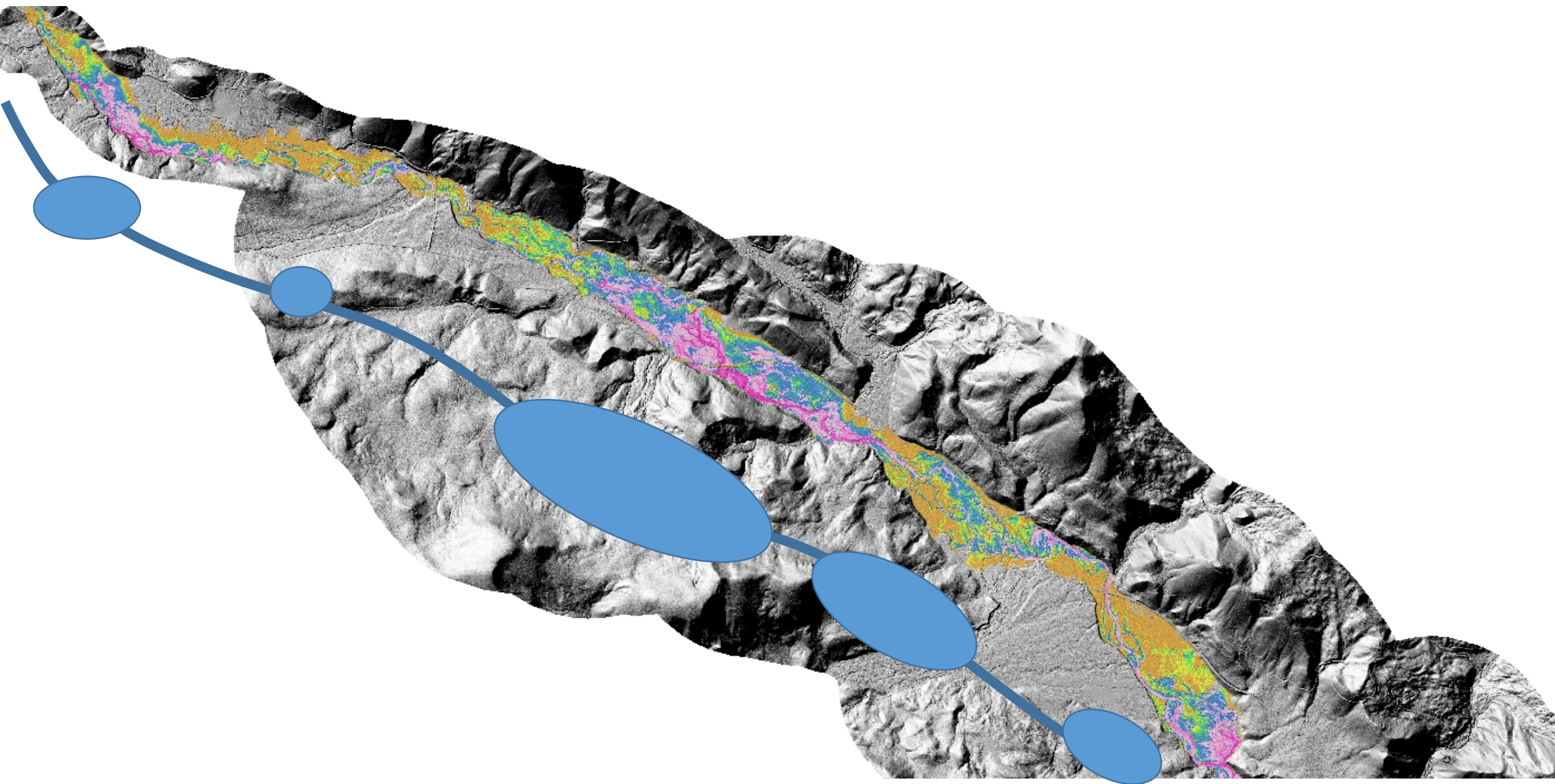


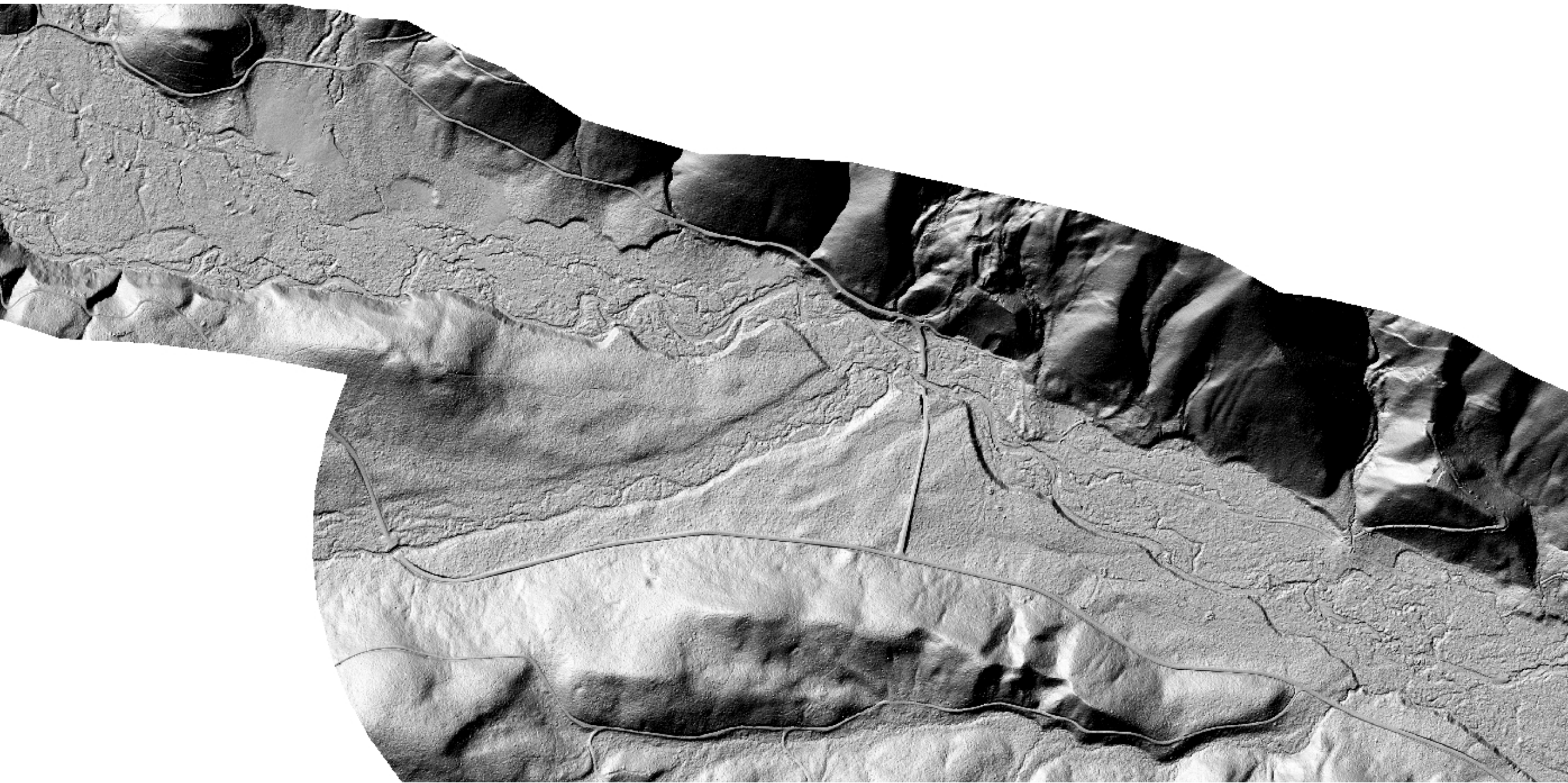


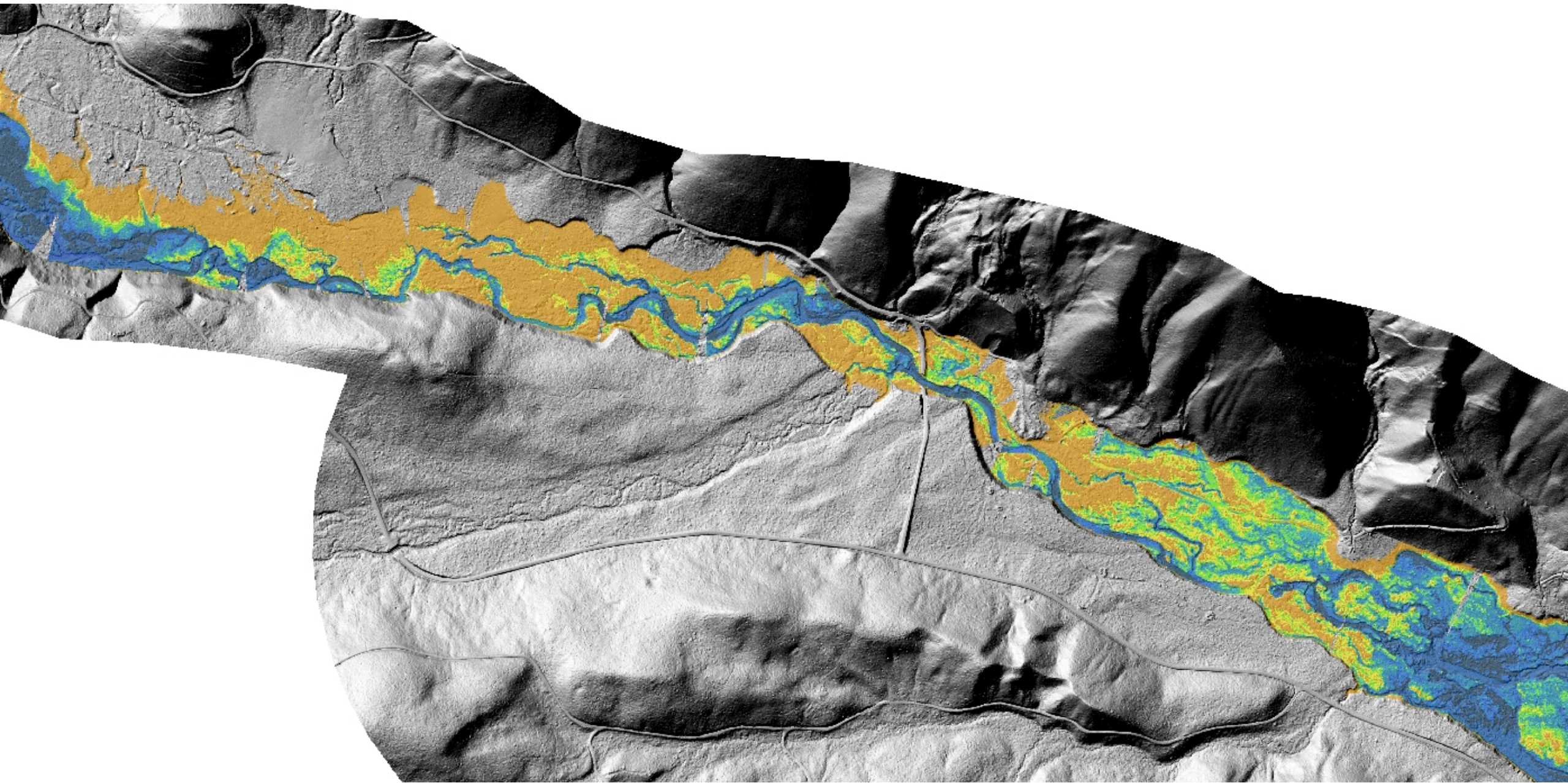
What other features stand out? Might we want to consider in a restoration design?





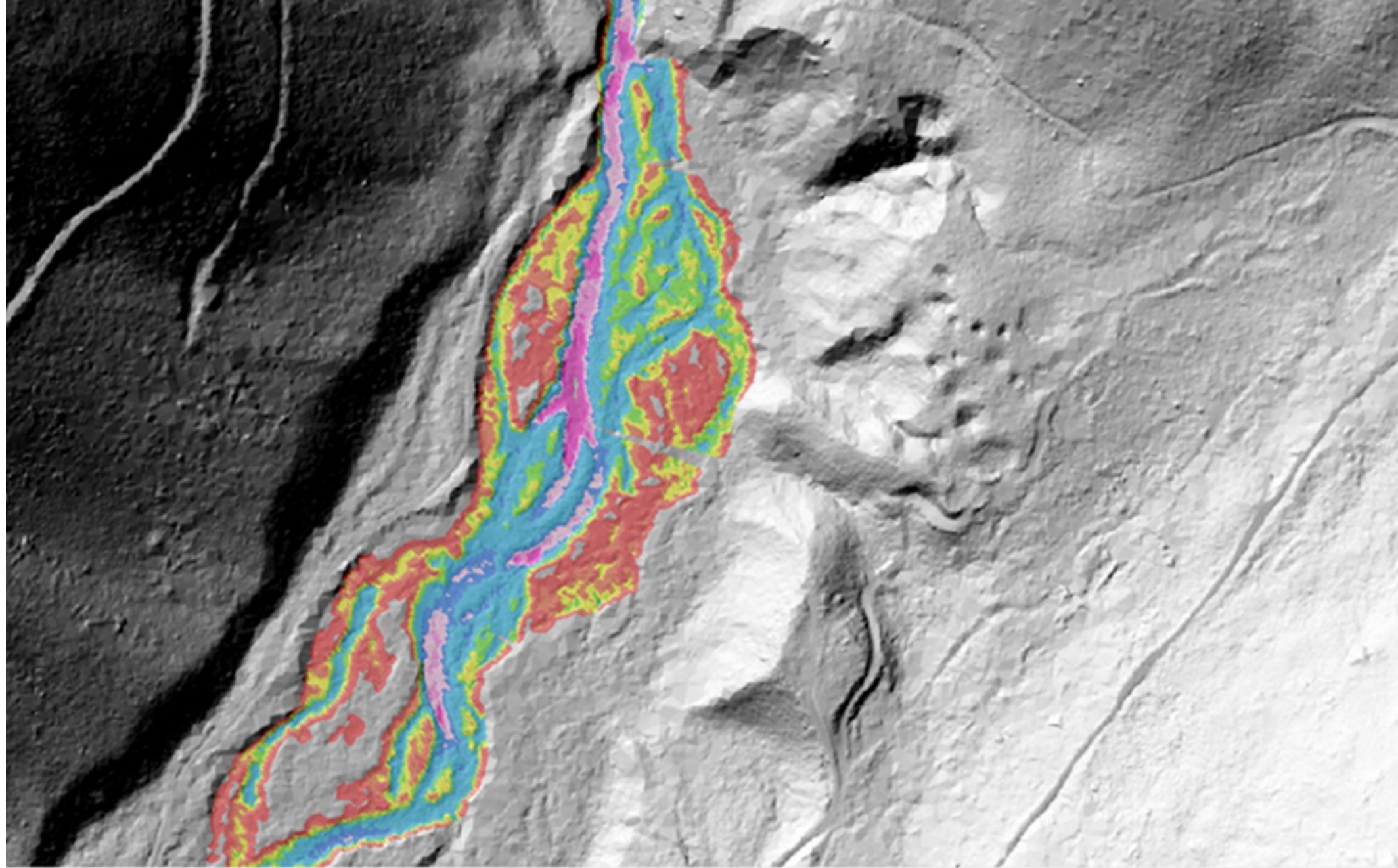








05.18.2015 10:18

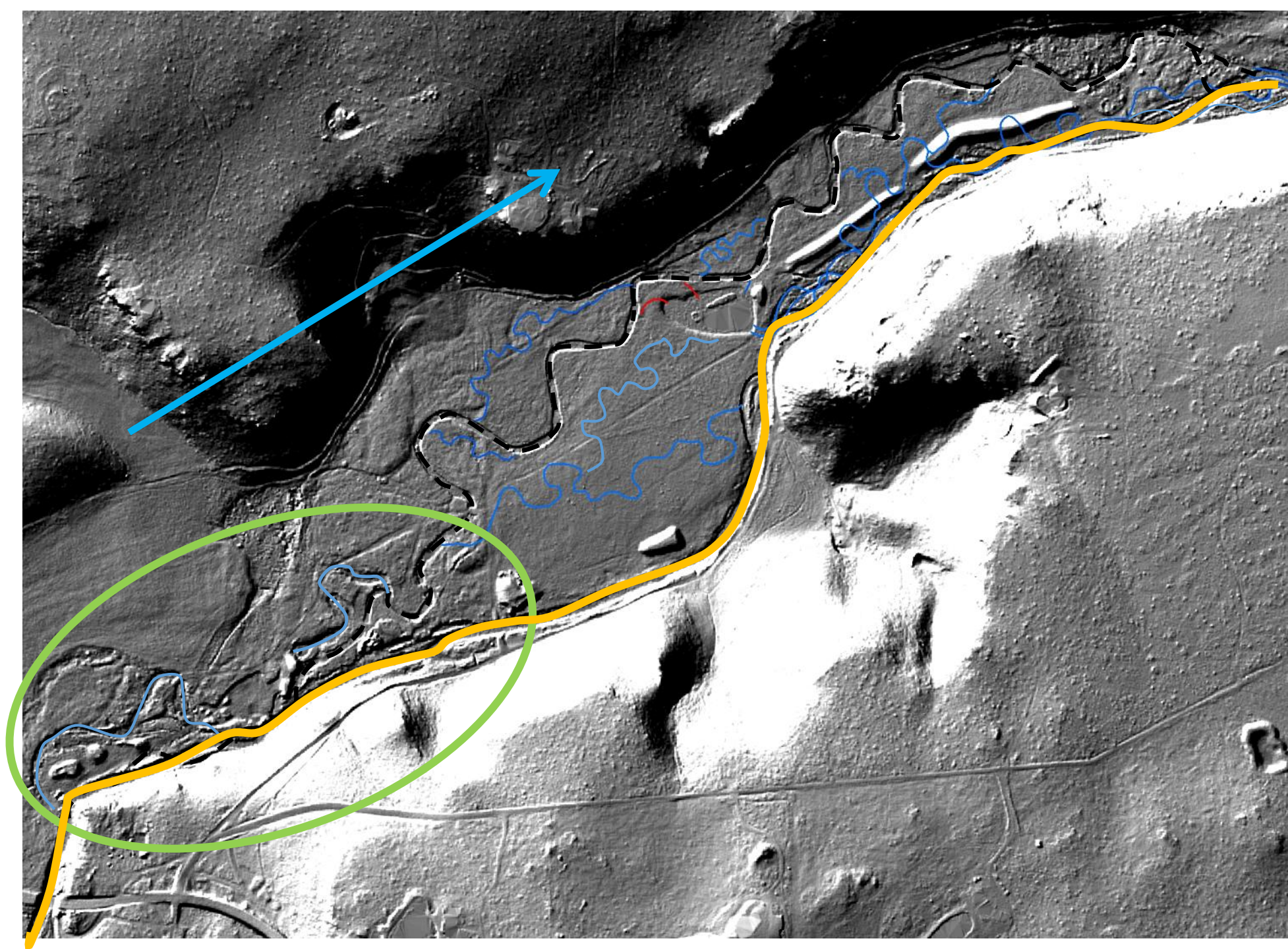


462681.174 1270589.29 Meters



9:13
4/10/2











8/12/2005

Image USDA Farm Service Agency
© 2012 Google

Google earth

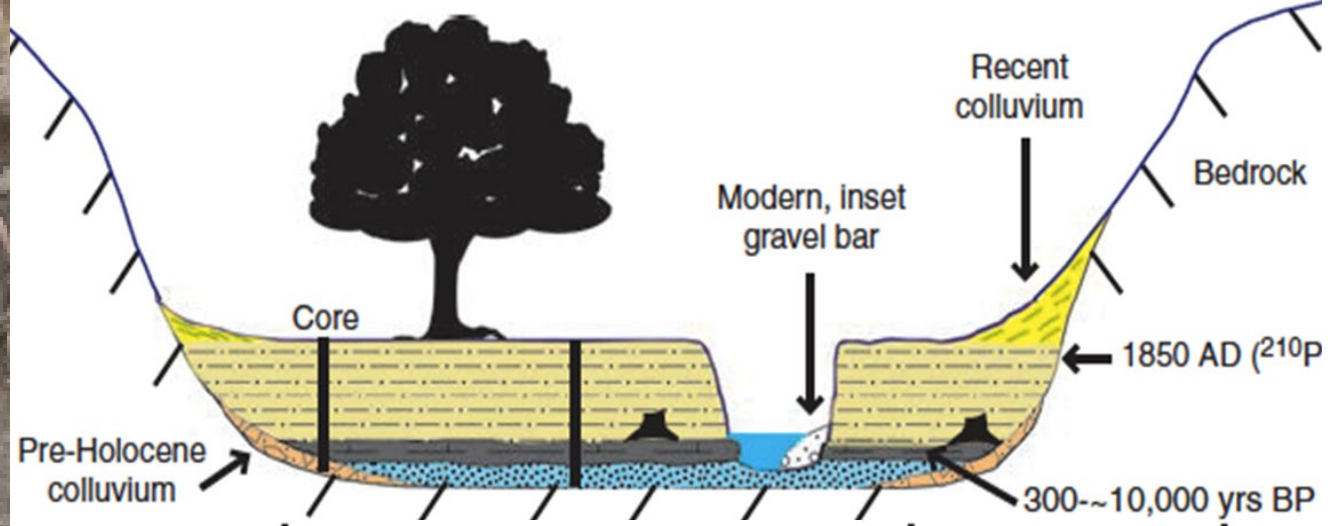
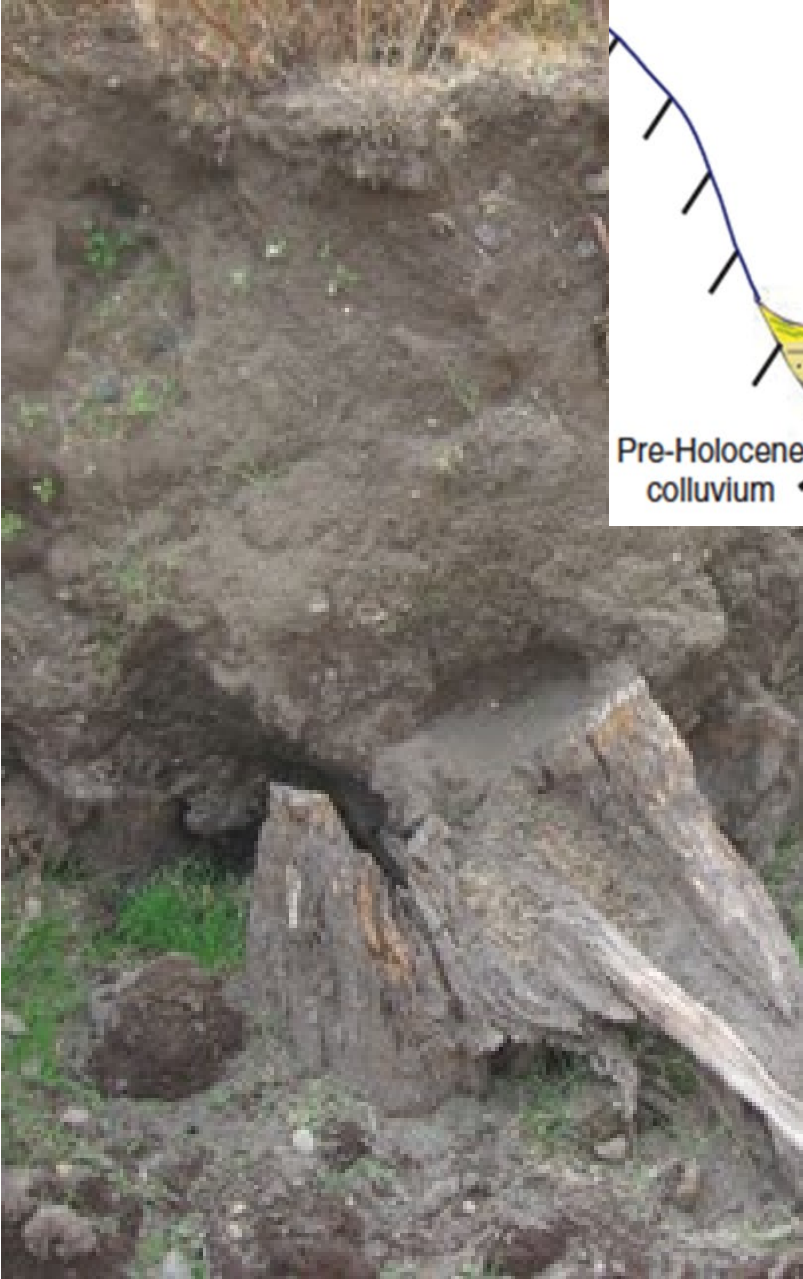
Imagery Date: 6/29/2005 1994

44°19'17.86" N 121°29'59.29" W elev 3114 ft

Eye alt 5767 ft



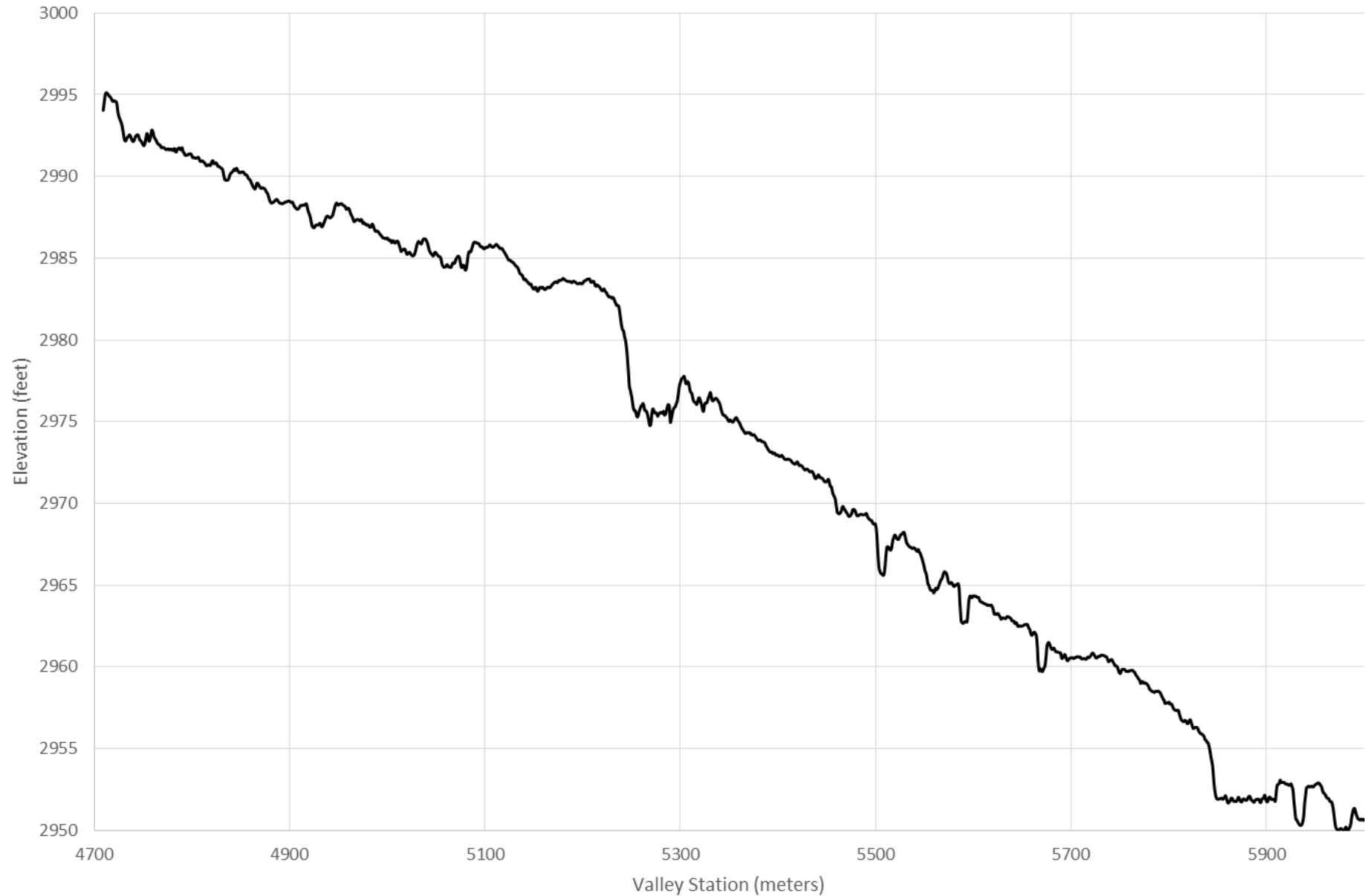




Walter and Merritts, 2008

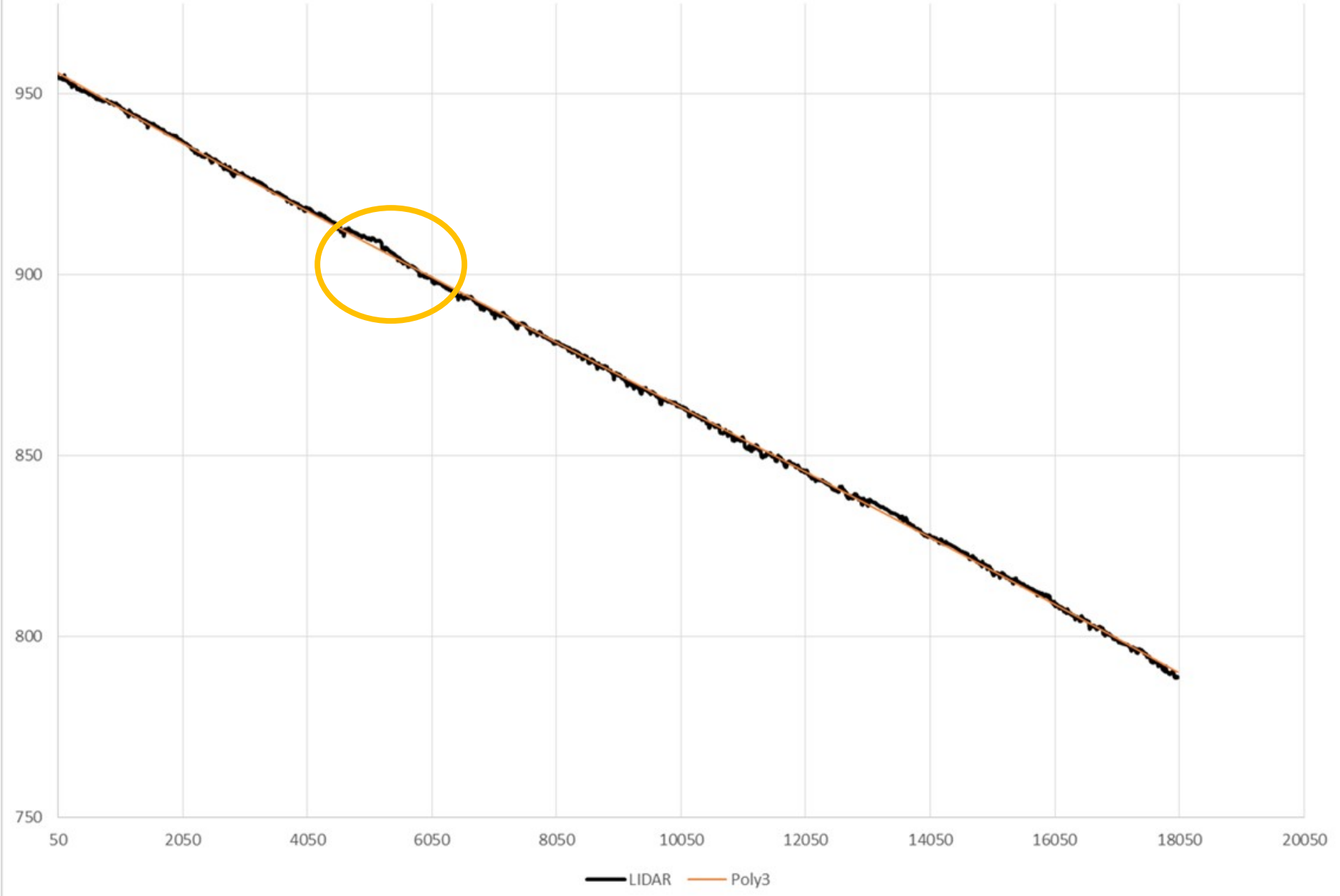


Whychus Valley Profile through Camp Polk



— Lidar

Whychus Creek Vally Profile Sisters to Transport Canyon



Whychus Valley Profile through Camp Polk

