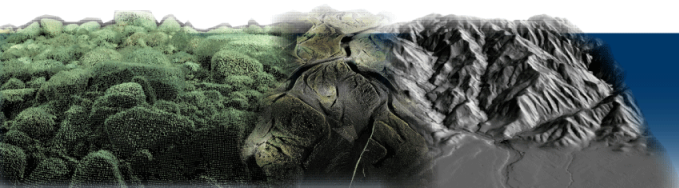
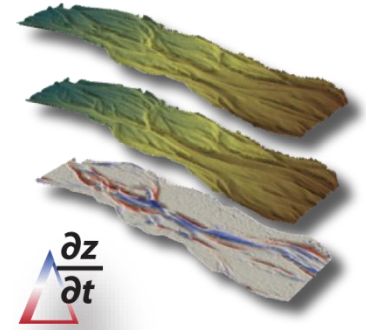
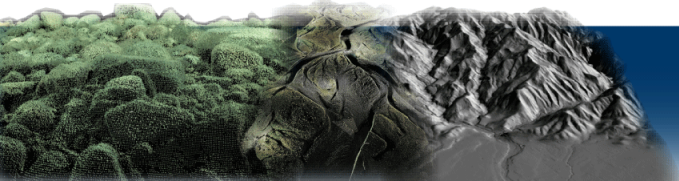
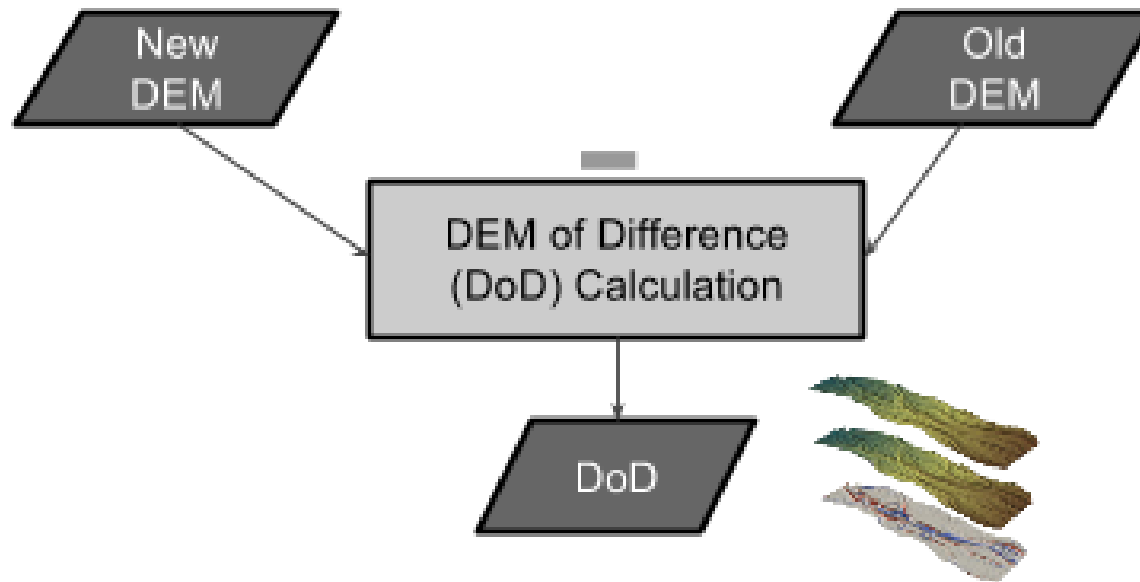


GEOMORPHIC CHANGE DETECTION

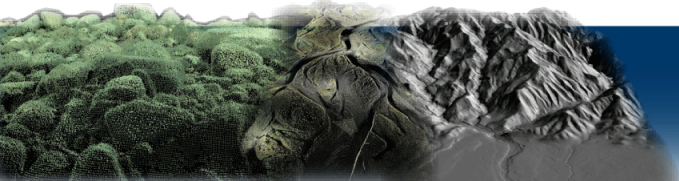
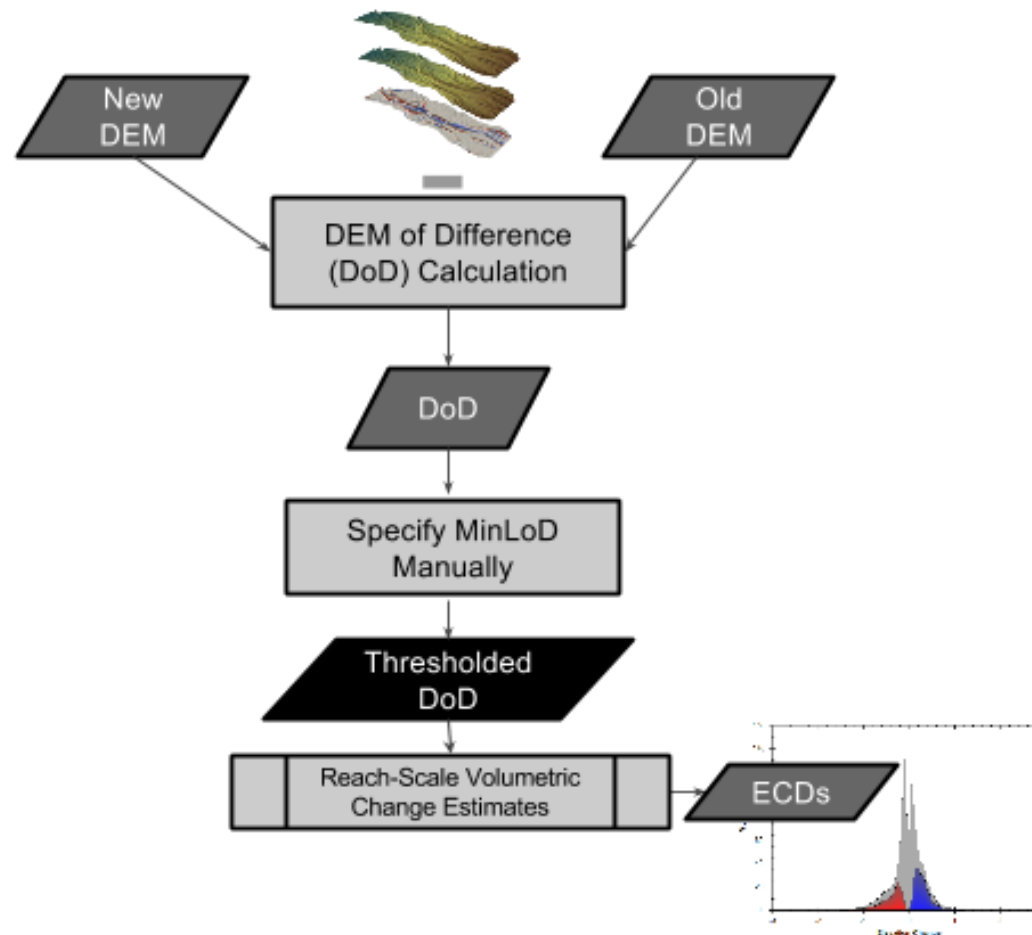
DAY 1 SYNTHESIS



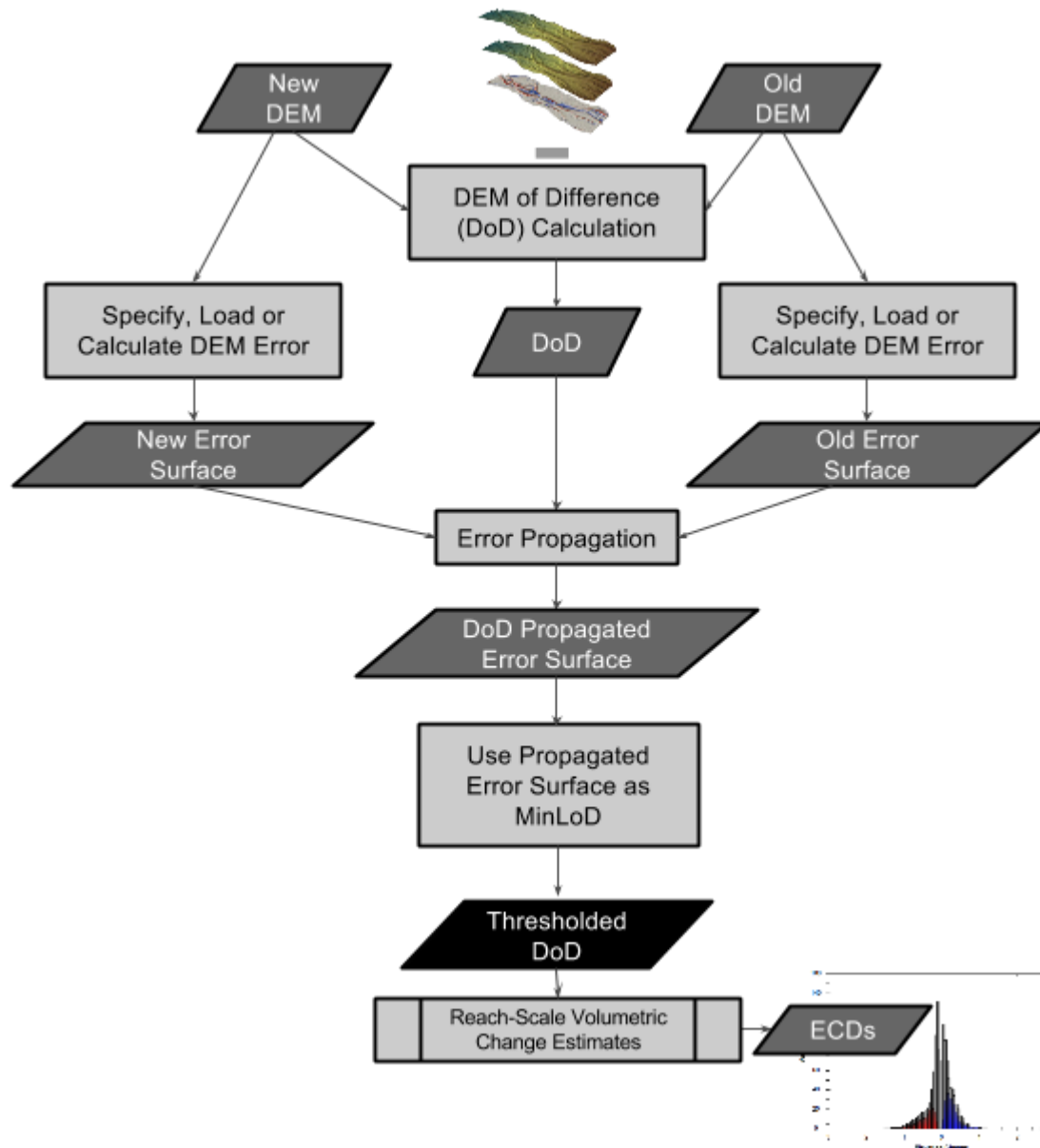
WE STARTED WITH SUBTRACTION



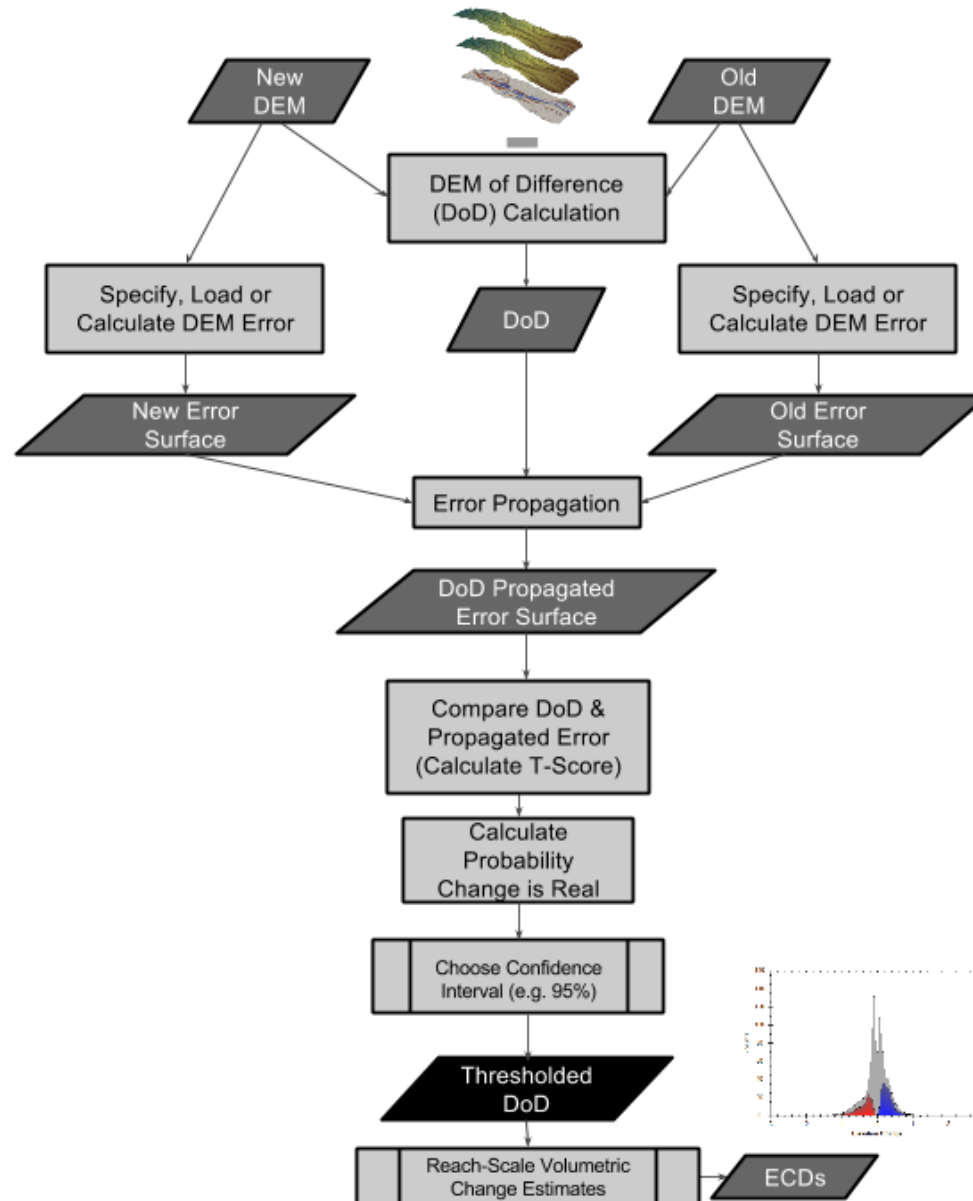
WE ADDED SIMPLE \min LoD LOGIC



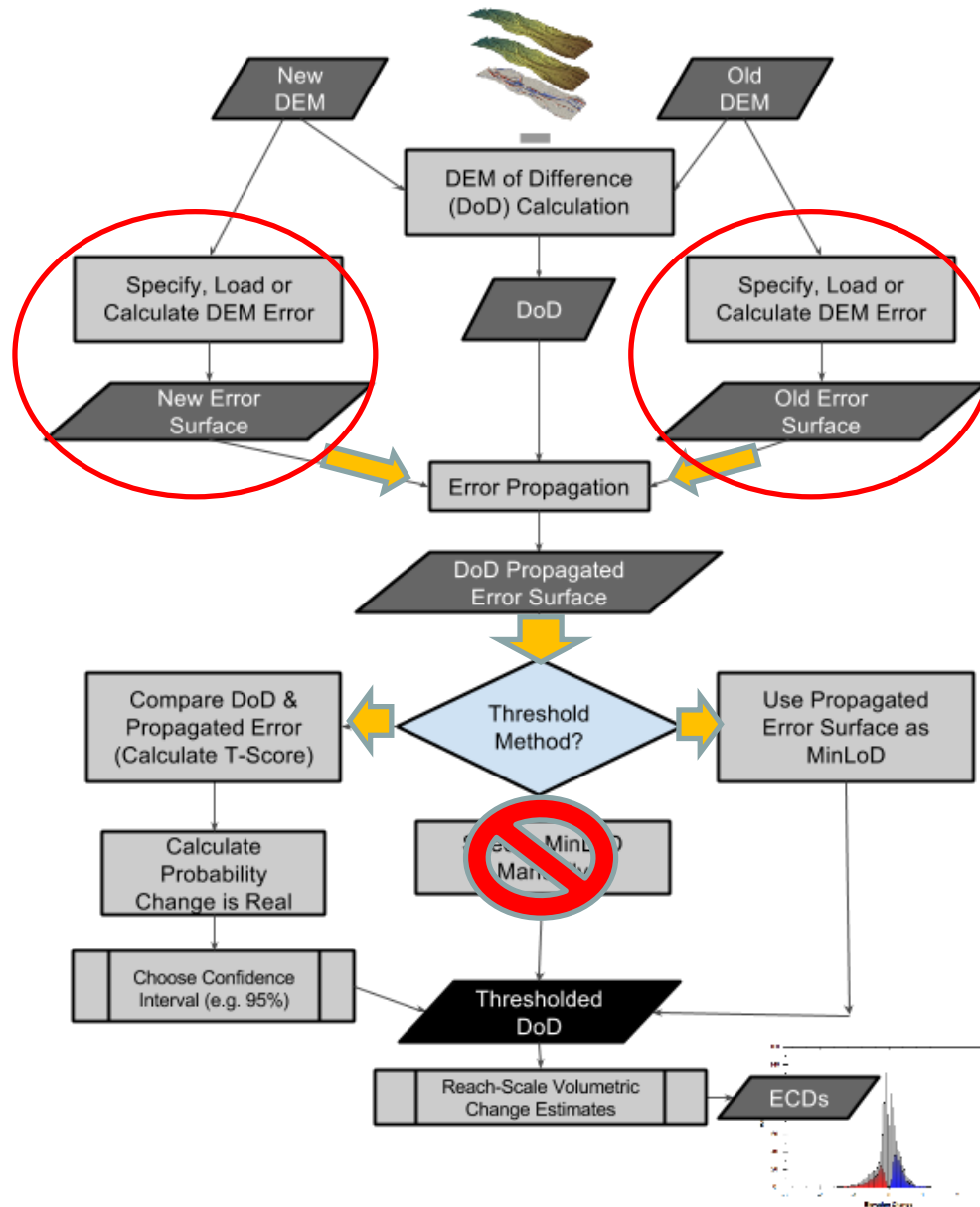
WE LOOKED AT PROPAGATED ERRORS



WE TRIED PROBABILISTIC THRESHOLDING



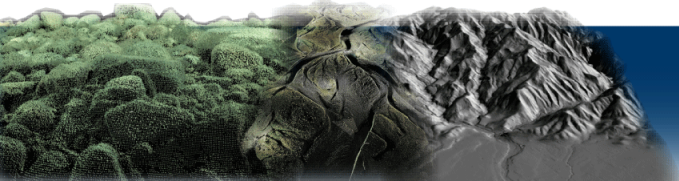
WE THEN FOCUSED ON ERROR MODELING



FOR ERROR MODELLING

We talked about:

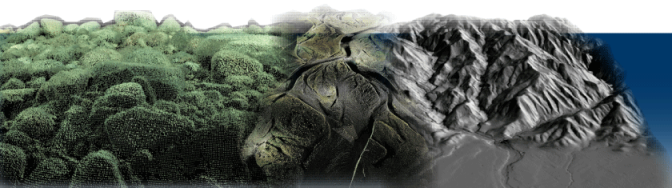
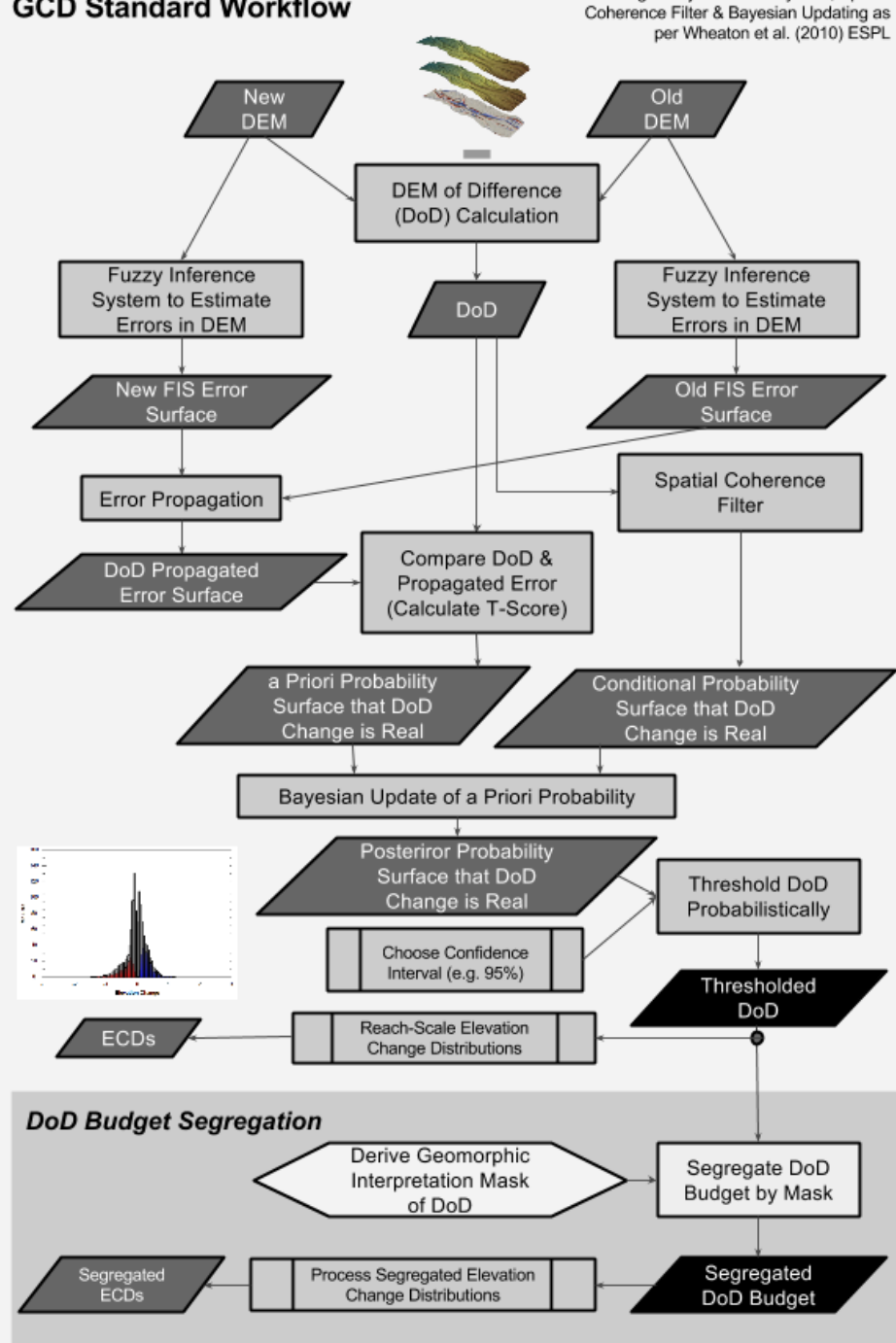
- Spatially Uniform
- Spatially Variable
 - Constant within regions by:
 - Wet/Dry
 - Survey Method
 - Cover Types
 - Statistical models of error
 - e.g. Detrended Standard Deviation (ToPCAT)



IN THE END, YOU HAVE CHOICES

Most important thing is:

- Not what pathway you take... but instead
- That the methods you use help you determine whether you can differentiate the signal of interest from noise



MAIN TAKE HOMES

- With error modeling, start simple, see if its good enough, and invest more effort only as needed
- Budget Segregation Extremely Flexible Way of Getting More Out of GCD
- Be Adaptable when Designing & Implementing Monitoring Campaigns... Hybrid A Reality
- 10% of Effort is Analysis – 90% is Data Preparation (e.g. Grid Concurrency; Building Surfaces; Removing Systematic Bias)

