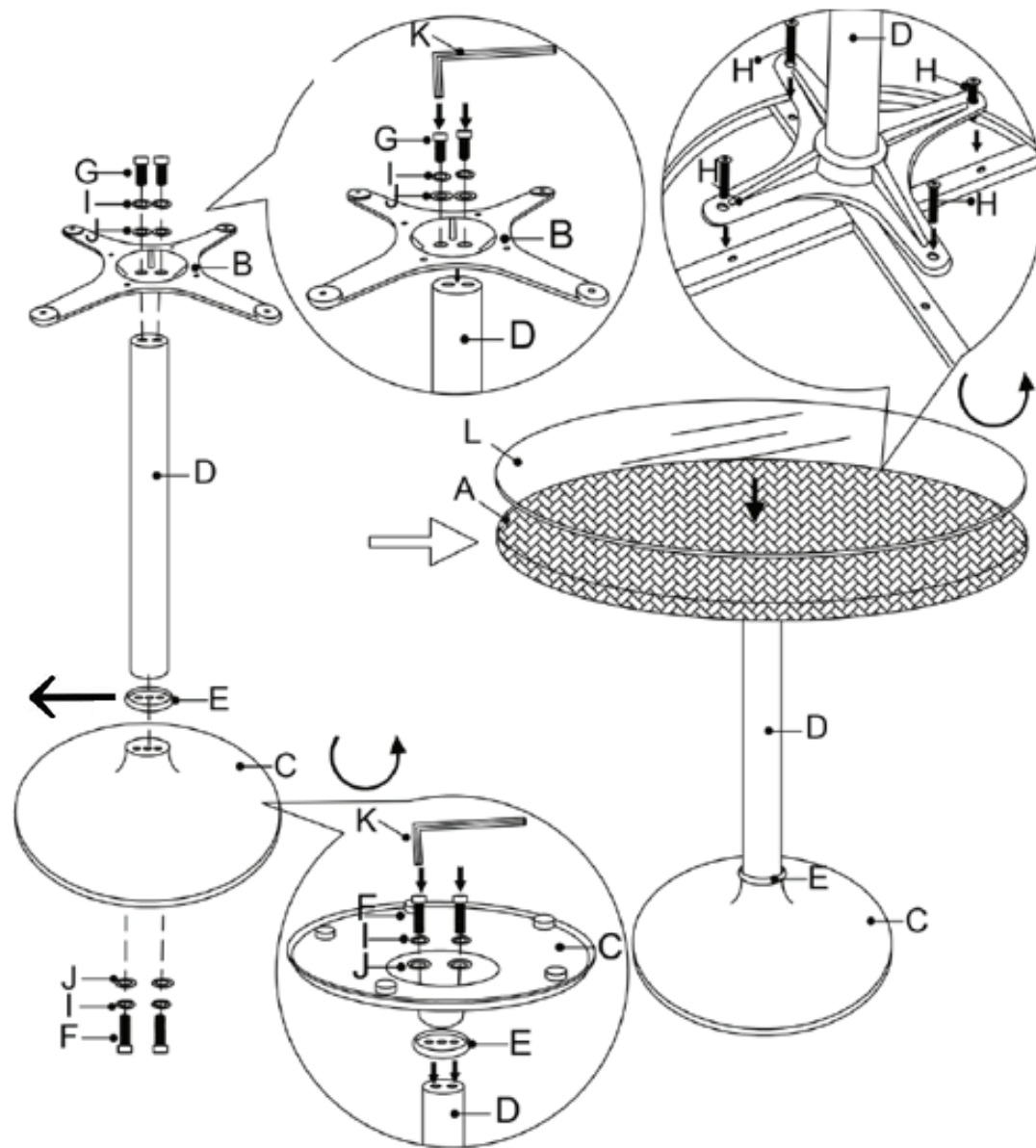


# Assembly Instructions

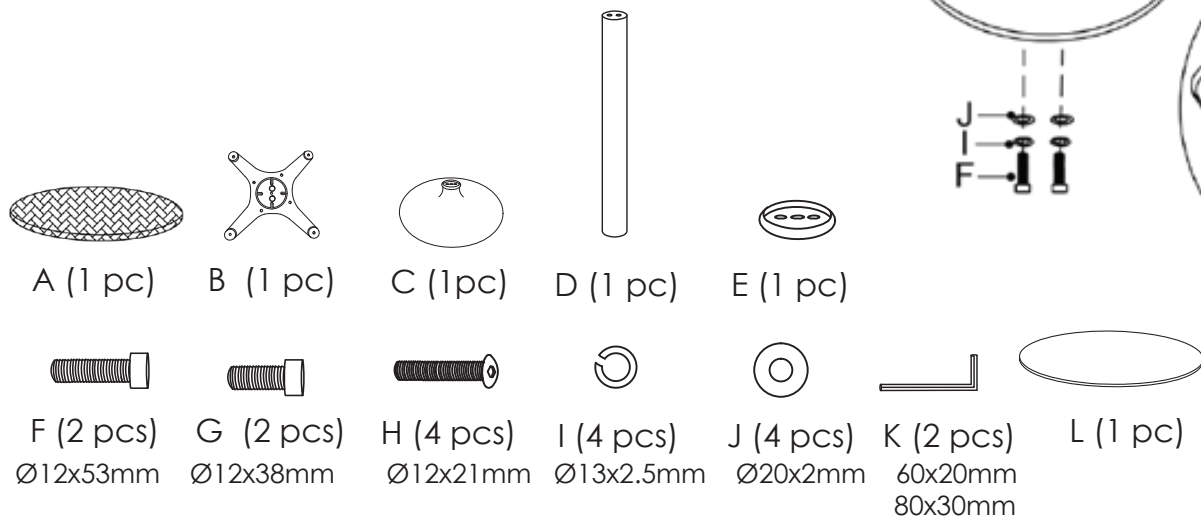
## ERLEND Round Dining Table

PLEASE NOTE: Check that you have received all components and hardware before assembling. If you are missing any parts, contact your retailer.



**Attention:** Small circle should face up and large circle should face down.

**Note:** Screws and washers (Part F, G, I and J) are preassembled on each side of column D. Please, remove to install as per instructions.



During assembly, hand tighten screws only. When the screws are in place, tighten completely.