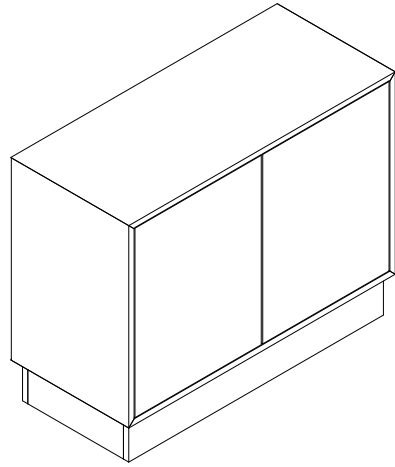
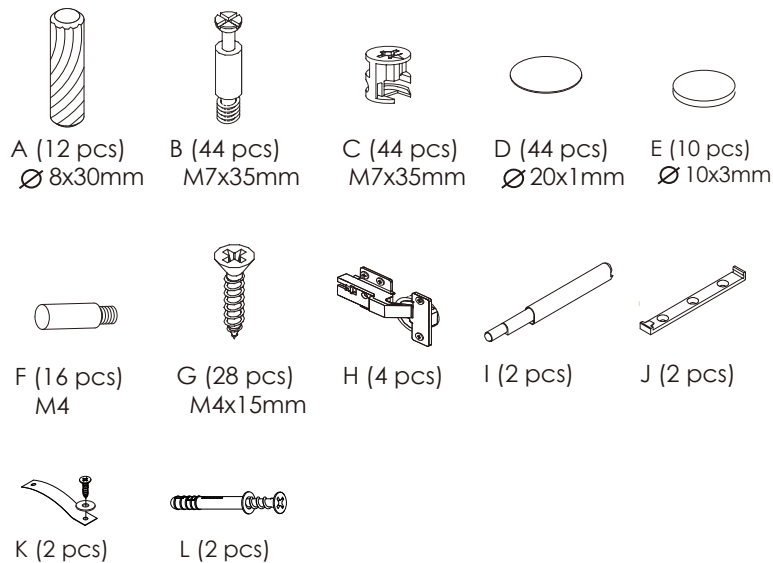
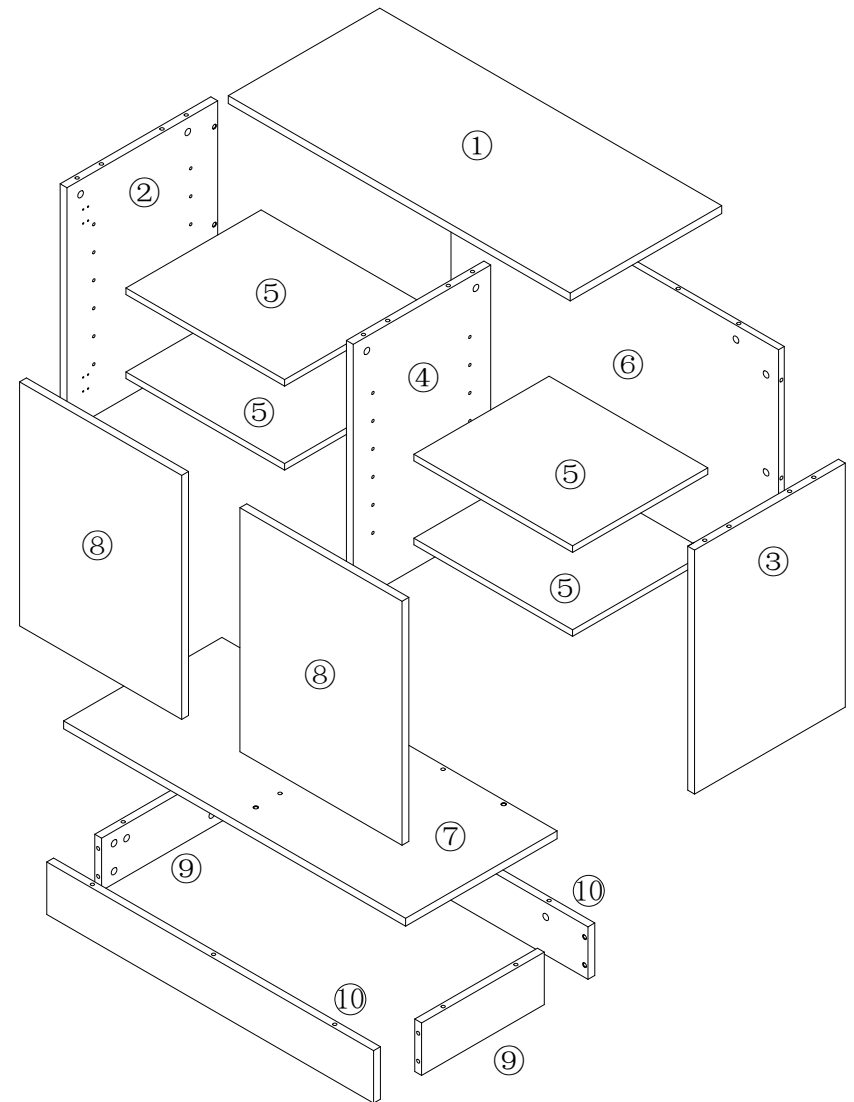


# Assembly Instructions

## TRESERO-44 Cabinet



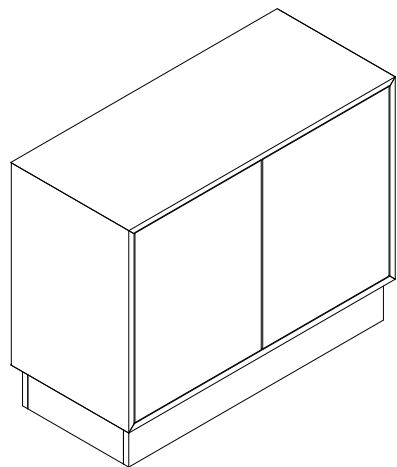
PLEASE NOTE: Check that you have received all components and hardware before assembling.  
If you are missing any parts, contact your retailer.



During assembly, hand tighten screws only. When the screws are in place, tighten completely.

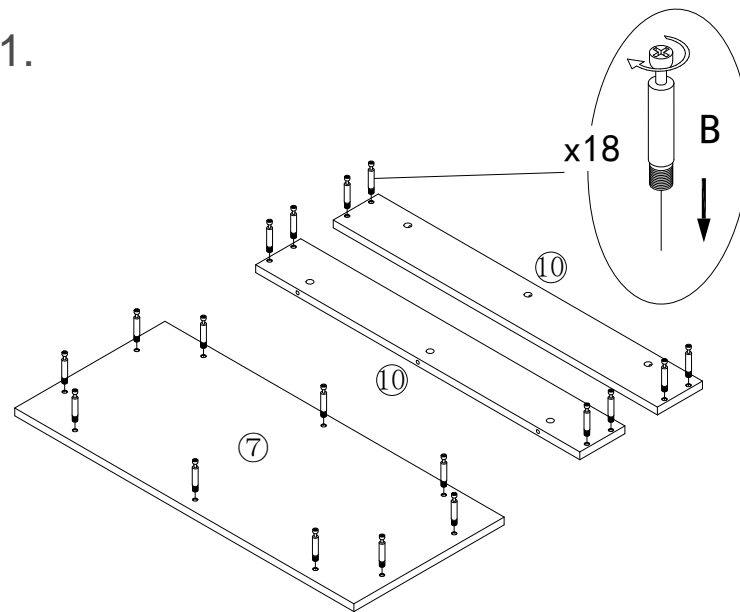
# Assembly Instructions

## TRESERO-44 Cabinet

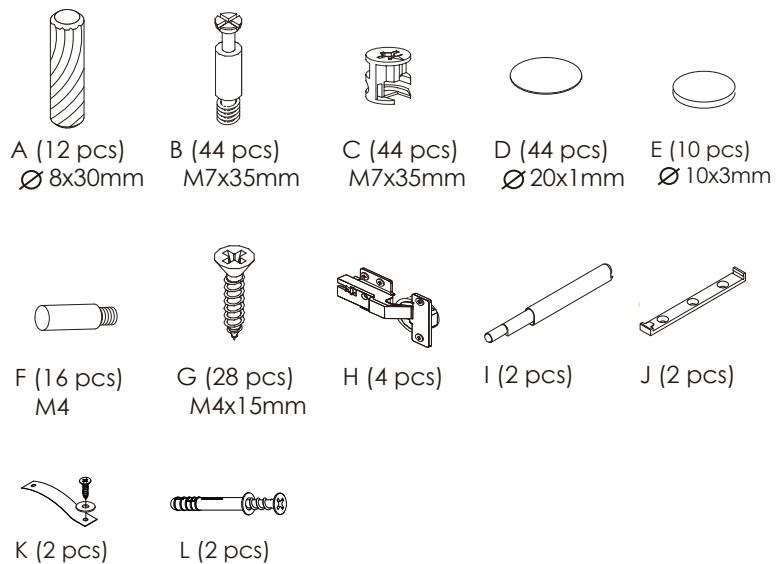
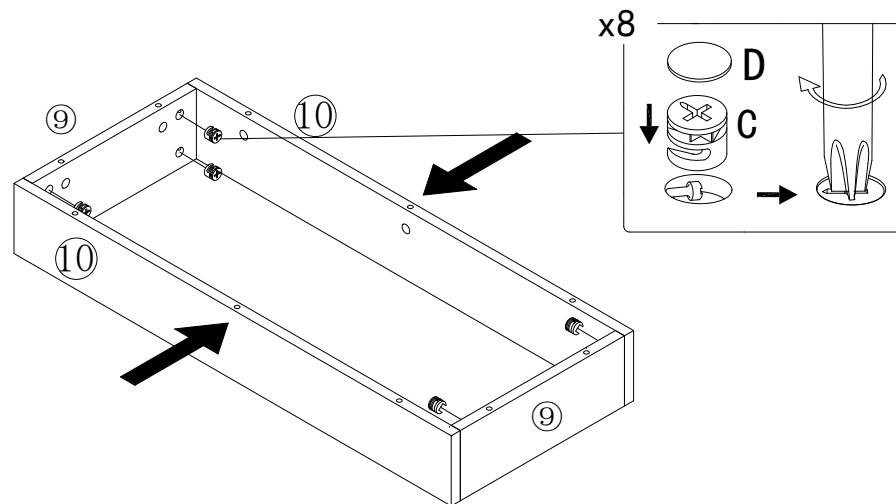


PLEASE NOTE: Check that you have received all components and hardware before assembling.  
If you are missing any parts, contact your retailer.

1.



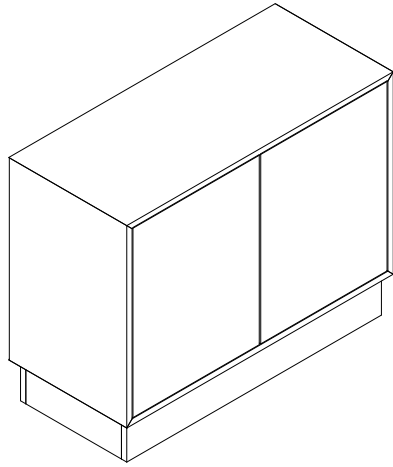
2.



During assembly, hand tighten screws only. When the screws are in place, tighten completely.

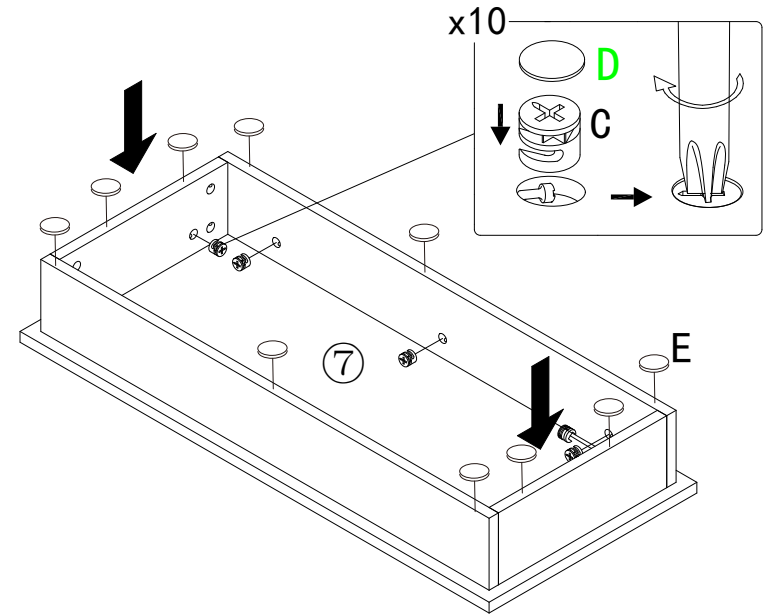
# Assembly Instructions

## TRESERO-44 Cabinet

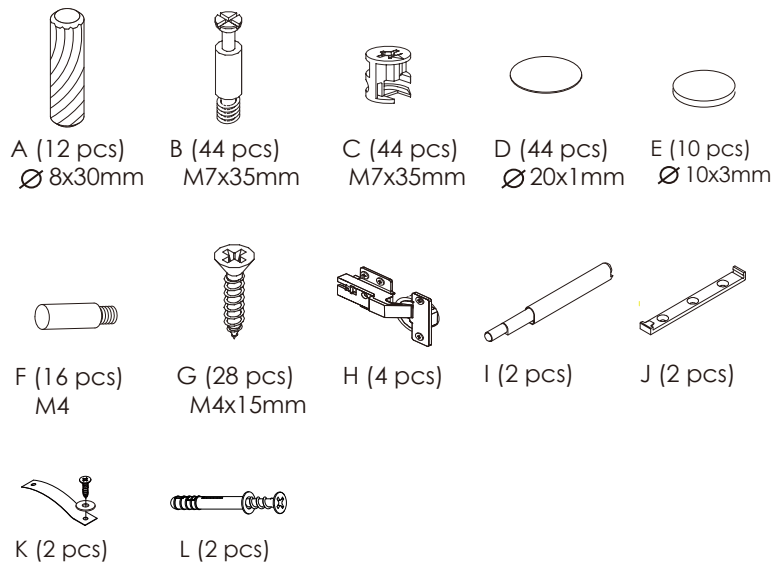
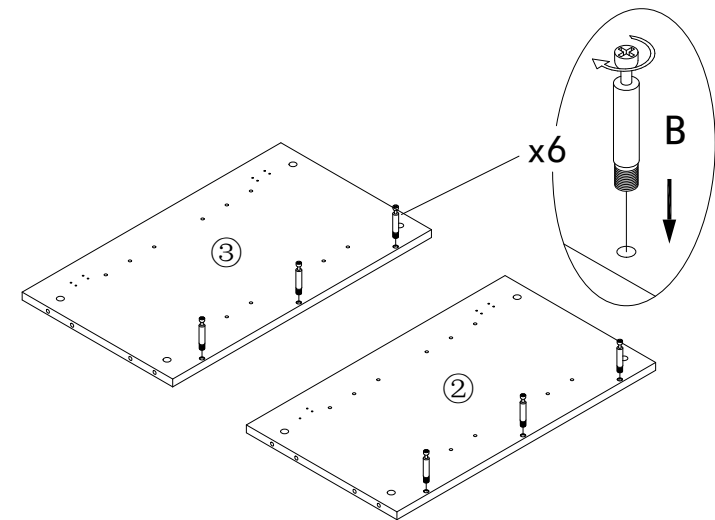


PLEASE NOTE: Check that you have received all components and hardware before assembling. If you are missing any parts, contact your retailer.

3.



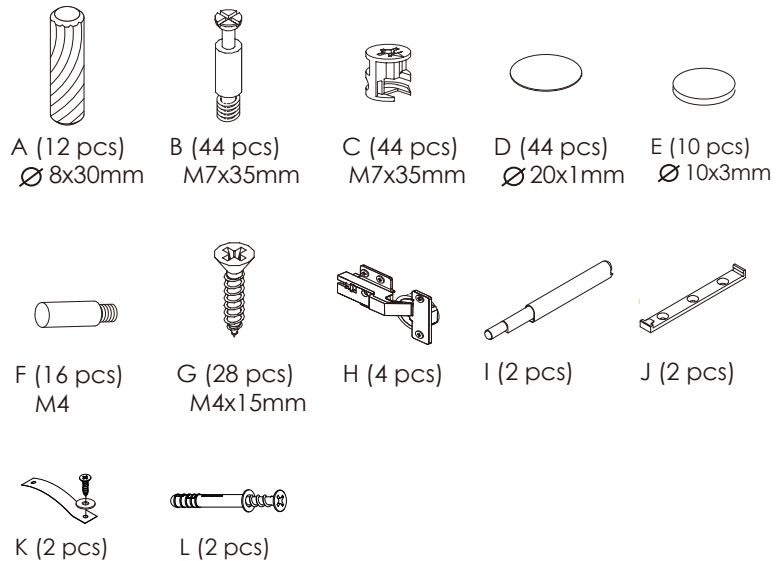
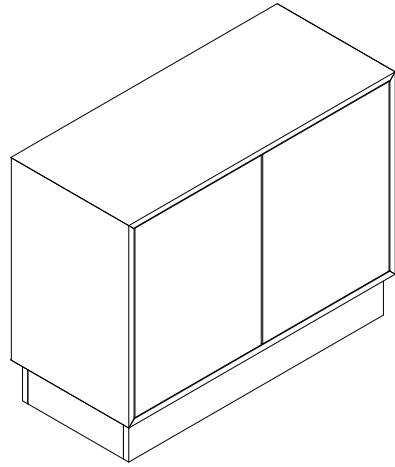
4.



During assembly, hand tighten screws only. When the screws are in place, tighten completely.

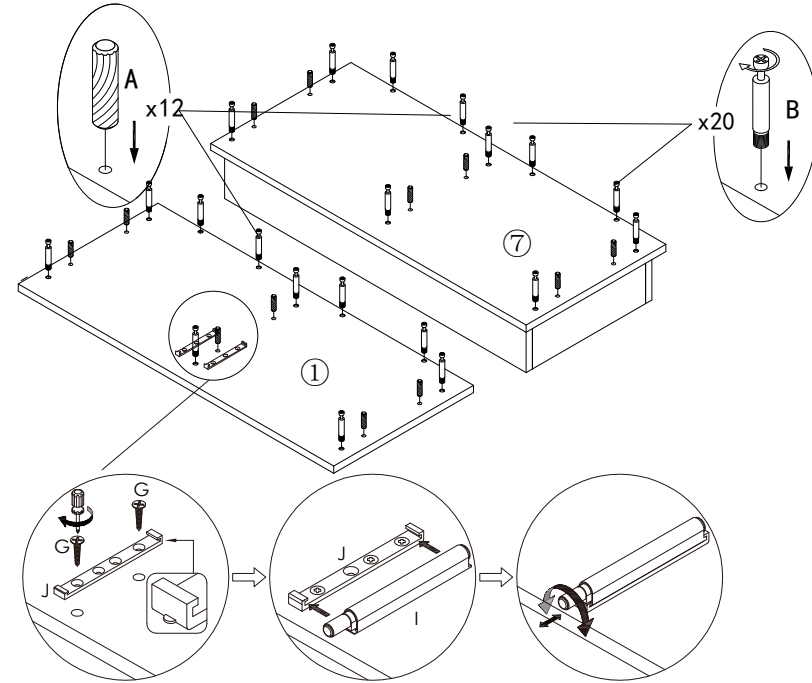
# Assembly Instructions

## TRESERO-44 Cabinet

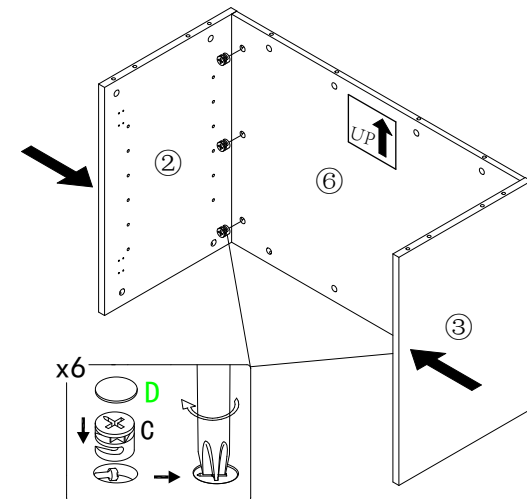


PLEASE NOTE: Check that you have received all components and hardware before assembling. If you are missing any parts, contact your retailer.

5.

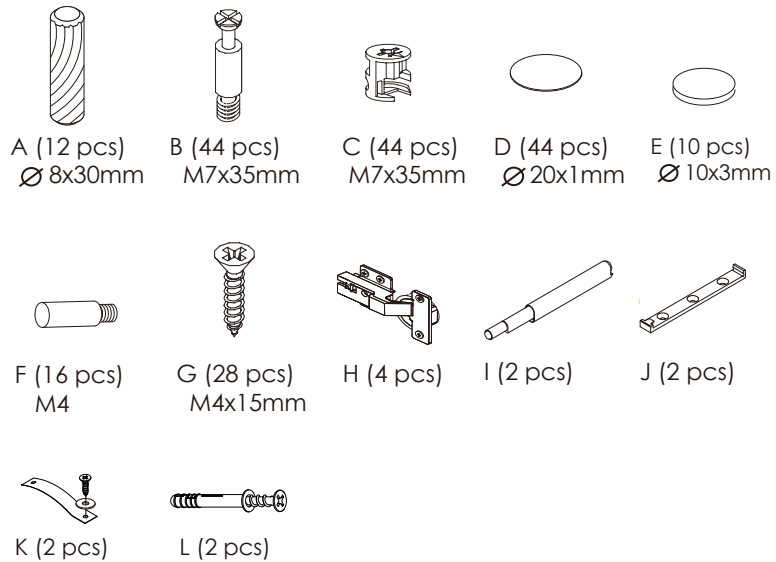
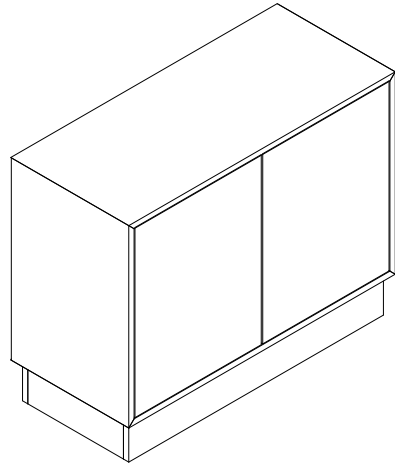


6.

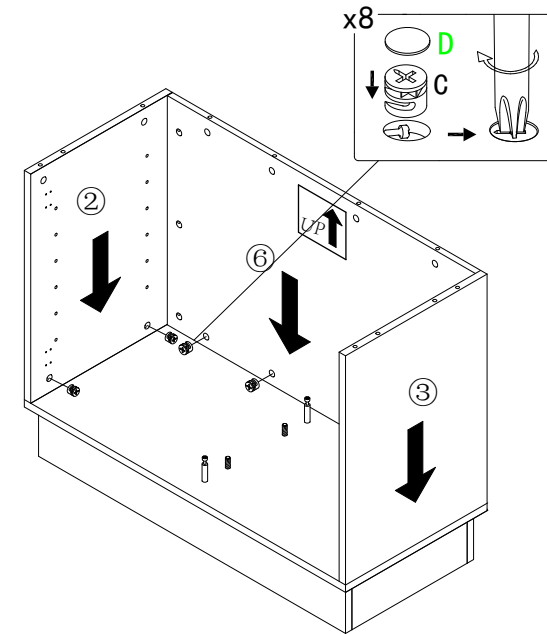


During assembly, hand tighten screws only. When the screws are in place, tighten completely.

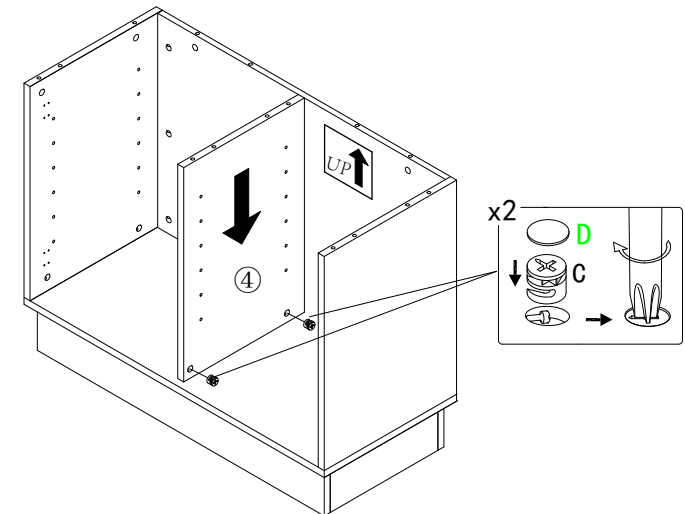
# Assembly Instructions TRESERO-44 Cabinet



7.

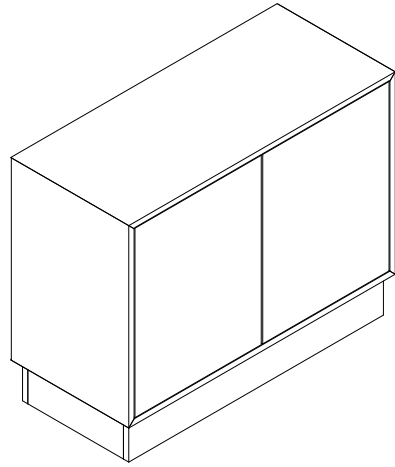


8.

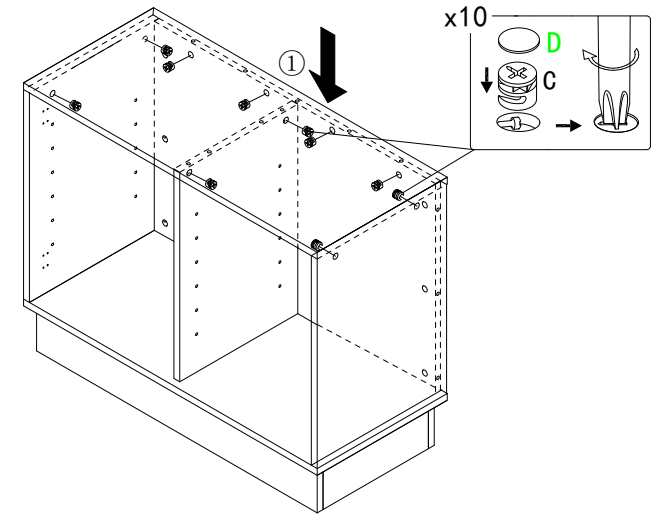


During assembly, hand tighten screws only. When the screws are in place, tighten completely.

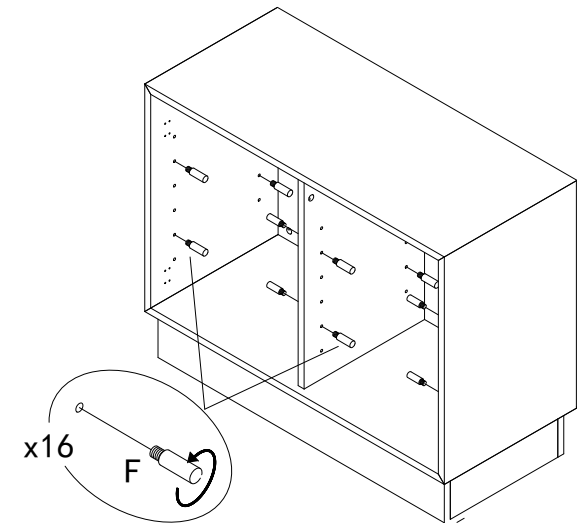
# Assembly Instructions TRESERO-44 Cabinet


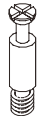





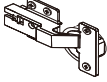
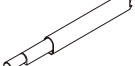
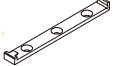




9.



10.



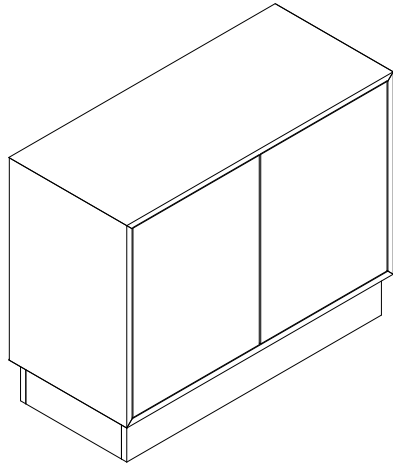
- |   |   |   |   |   |
|---|---|---|---|---|
|   |   |   |   |   |
| A (12 pcs)<br>Ø 8x30mm  | B (44 pcs)<br>M7x35mm   | C (44 pcs)<br>M7x35mm   | D (44 pcs)<br>Ø 20x1mm  | E (10 pcs)<br>Ø 10x3mm  |
|  |  |  |  |  |
| F (16 pcs)<br>M4  | G (28 pcs)<br>M4x15mm   | H (4 pcs)   | I (2 pcs)   | J (2 pcs)   |
|  |  |   |   |   |
| K (2 pcs)   | L (2 pcs)   |   |   |   |

During assembly, hand tighten screws only. When the screws are in place, tighten completely.

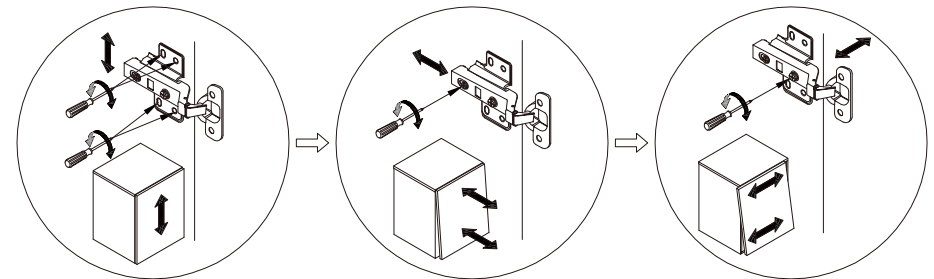
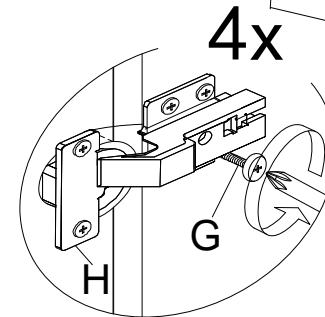
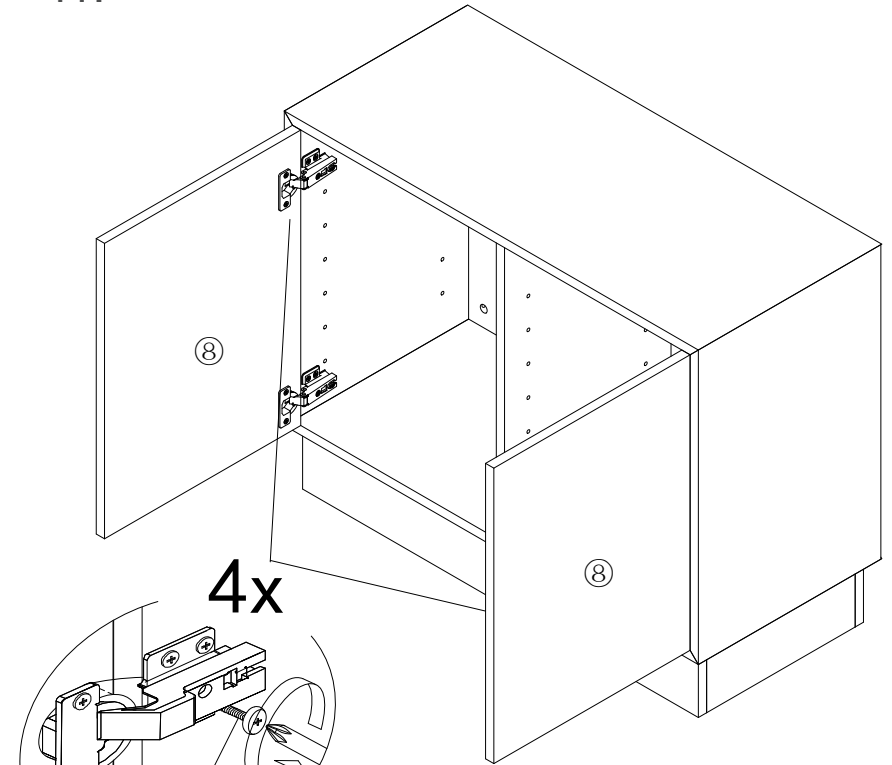
# Assembly Instructions

## TRESERO-44 Cabinet

PLEASE NOTE: Check that you have received all components and hardware before assembling.  
If you are missing any parts, contact your retailer.



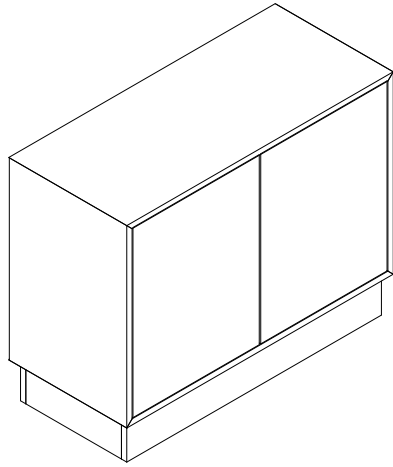
11.



- A (12 pcs)  $\varnothing$  8x30mm  
 B (44 pcs) M7x35mm  
 C (44 pcs) M7x35mm  
 D (44 pcs)  $\varnothing$  20x1mm  
 E (10 pcs)  $\varnothing$  10x3mm  
 F (16 pcs) M4  
 G (28 pcs) M4x15mm  
 H (4 pcs)  
 I (2 pcs)  
 J (2 pcs)  
 K (2 pcs)  
 L (2 pcs)

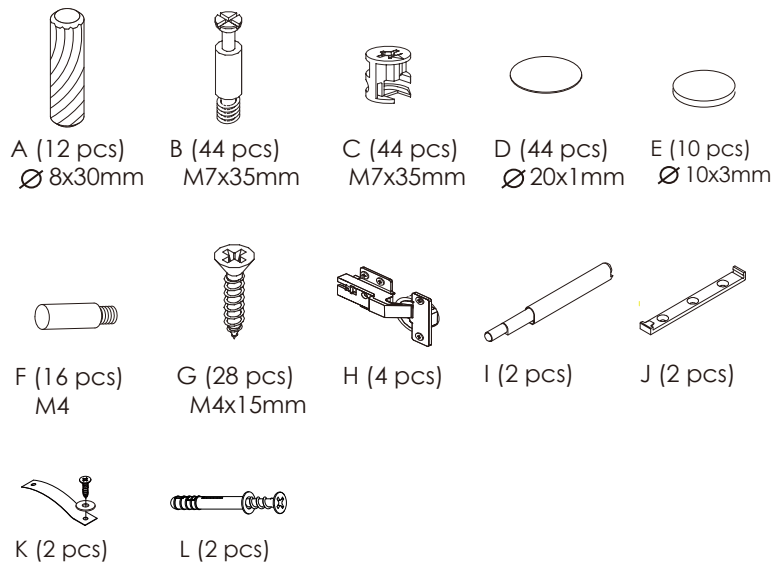
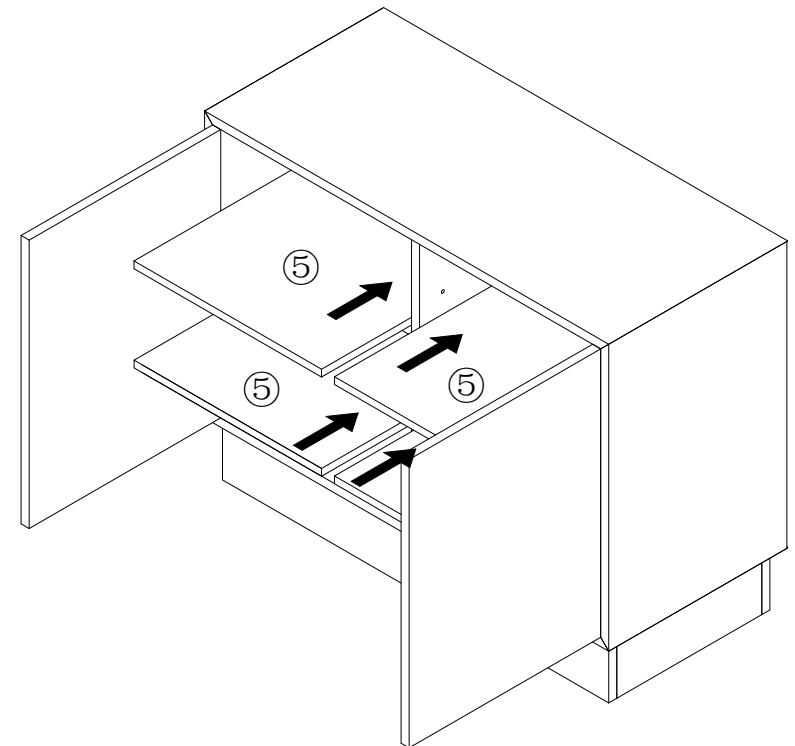
During assembly, hand tighten screws only. When the screws are in place, tighten completely.

# Assembly Instructions TRESERO-44 Cabinet



PLEASE NOTE: Check that you have received all components and hardware before assembling.  
If you are missing any parts, contact your retailer.

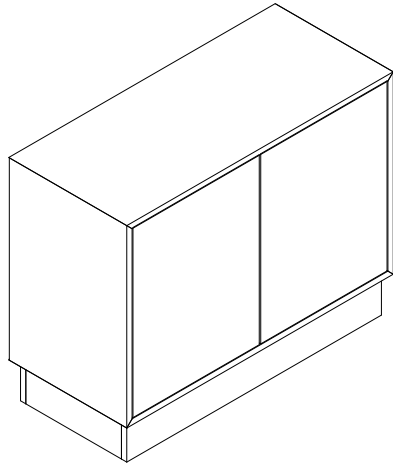
12.



During assembly, hand tighten screws only. When the screws are in place, tighten completely.

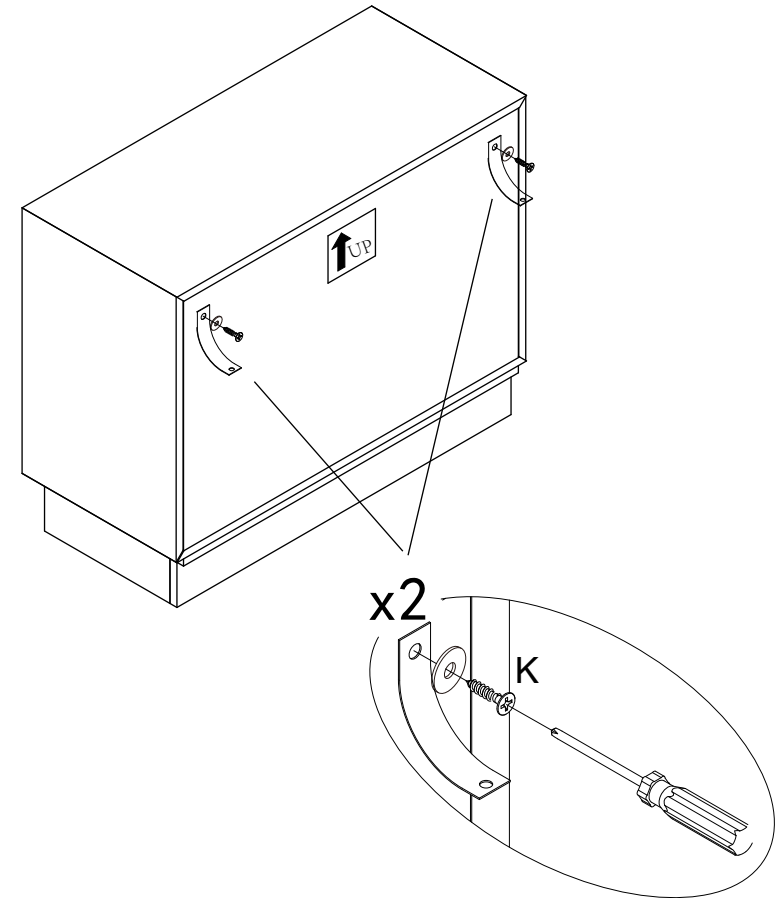



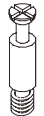





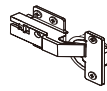
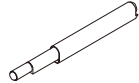
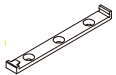
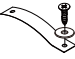

# Assembly Instructions TRESERO-44 Cabinet



PLEASE NOTE: Check that you have received all components and hardware before assembling.  
If you are missing any parts, contact your retailer.

13.

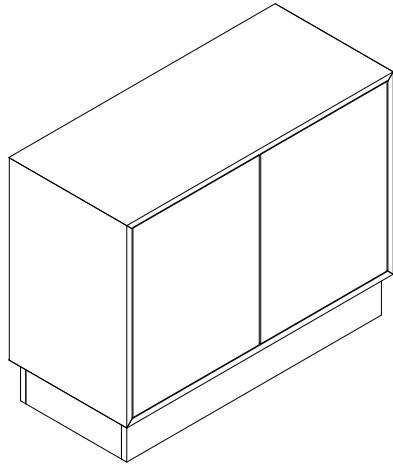


- |   |   |   |   |   |
|---|---|---|---|---|
|   |   |   |   |   |
| A (12 pcs)<br>Ø 8x30mm  | B (44 pcs)<br>M7x35mm   | C (44 pcs)<br>M7x35mm   | D (44 pcs)<br>Ø 20x1mm  | E (10 pcs)<br>Ø 10x3mm  |
|  |  |  |  |  |
| F (16 pcs)<br>M4  | G (28 pcs)<br>M4x15mm   | H (4 pcs)   | I (2 pcs)   | J (2 pcs)   |
|  |  |   |   |   |
| K (2 pcs)   | L (2 pcs)   |   |   |   |

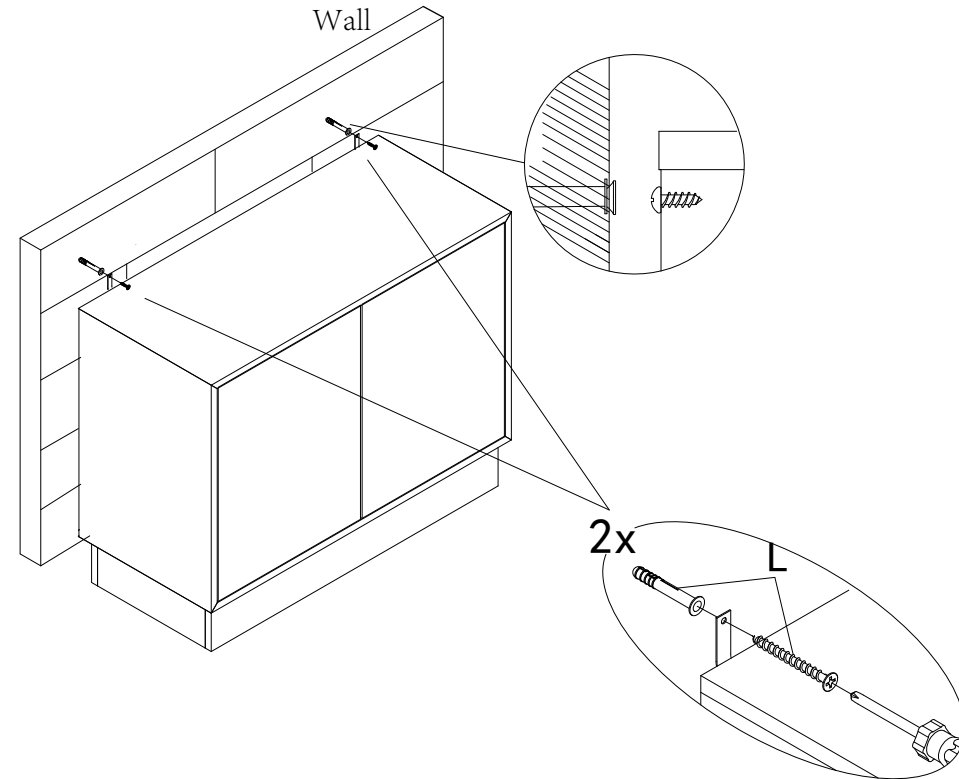
During assembly, hand tighten screws only. When the screws are in place, tighten completely.


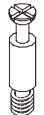





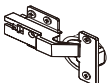
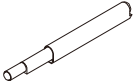
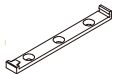
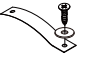

# Assembly Instructions TRESERO-44 Cabinet

PLEASE NOTE: Check that you have received all components and hardware before assembling.  
If you are missing any parts, contact your retailer.



14.



- |   |   |   |   |   |
|---|---|---|---|---|
|   |   |   |   |   |
| A (12 pcs)<br>Ø 8x30mm  | B (44 pcs)<br>M7x35mm   | C (44 pcs)<br>M7x35mm   | D (44 pcs)<br>Ø 20x1mm  | E (10 pcs)<br>Ø 10x3mm  |
|  |  |  |  |  |
| F (16 pcs)<br>M4  | G (28 pcs)<br>M4x15mm   | H (4 pcs)   | I (2 pcs)   | J (2 pcs)   |
|  |  |   |   |   |
| K (2 pcs)   | L (2 pcs)   |   |   |   |

During assembly, hand tighten screws only. When the screws are in place, tighten completely.