

# **Alsina**

**FORMWORK SOLUTIONS**

## **OUTSTANDING PROJECTS INDUSTRY AND ENERGY**



Waste Treatment Plant in Marseilles (France) |







La Paloma Biomethanisation plant (Spain)













Johns Processing Center in Wisconsin (United States) |

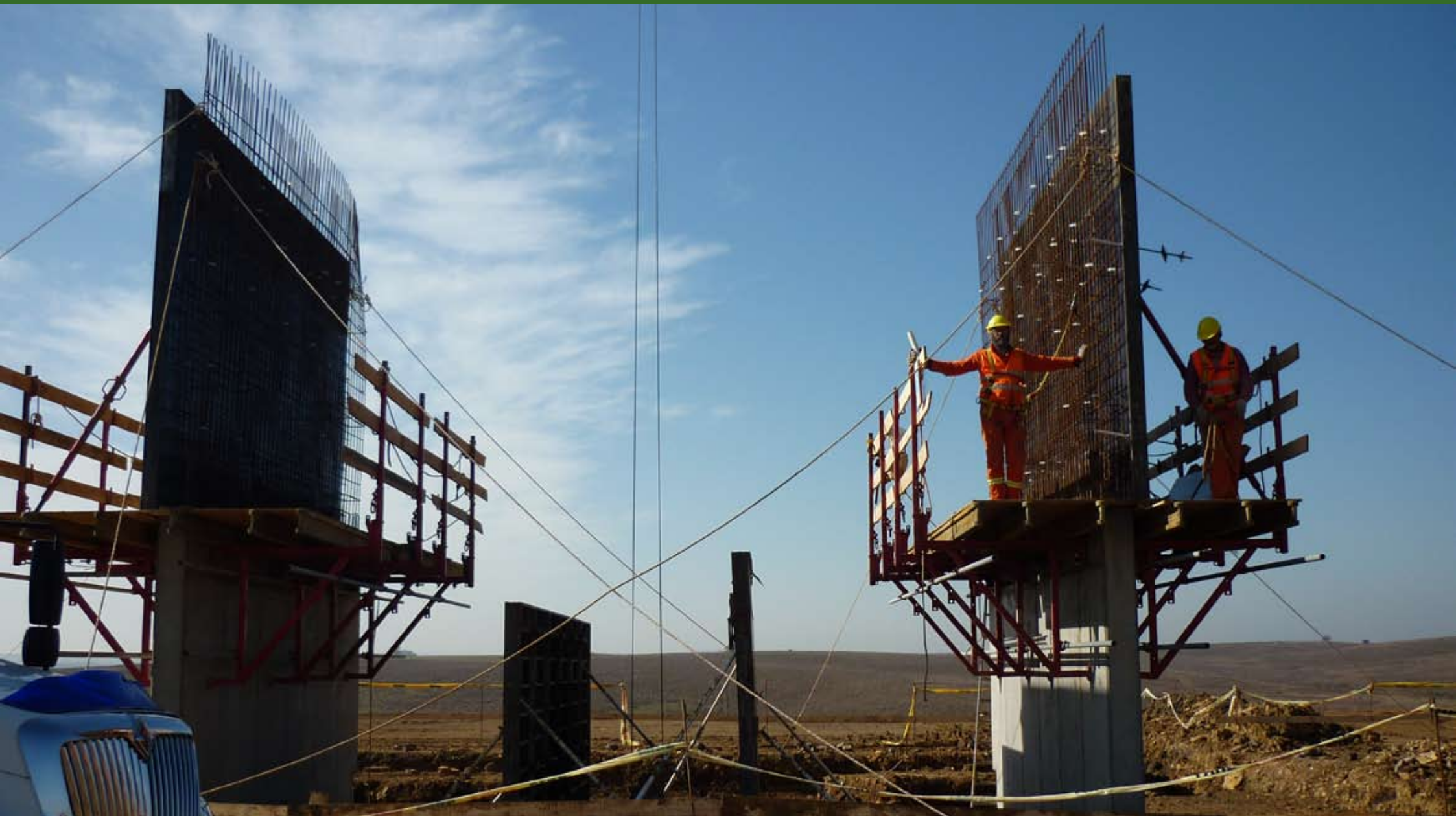






Las Higueras hydroelectric power station (Chile) |















Refinery extension in Cartagena (Spain) |



# Alsina

## FORMWORK SOLUTIONS

**Encofrados J. Alsina, S.A. (Headquarters)**  
 Pol. Ind. Pla d'en Coll, Camí de la Font Freda, 1  
 08110 - Montcada i Reixac - Barcelona (Spain)  
 Tel. (+34) 935 753 000 - Fax (+34) 935 647 059  
 E-mail: [alsinainfo@alsina.com](mailto:alsinainfo@alsina.com) - Web: [www.alsina.com](http://www.alsina.com)



**United States**  
[www.alsinaforms.com](http://www.alsinaforms.com)

**Chile**  
[www.alsina.cl](http://www.alsina.cl)

**Uruguay**  
[www.alsina.com.uy](http://www.alsina.com.uy)

**Peru**  
[www.alsina.pe](http://www.alsina.pe)

**Panama**  
[www.alsina.com.pa](http://www.alsina.com.pa)

**Colombia**  
[www.andamiosyencofrados.com](http://www.andamiosyencofrados.com)

**Paraguay**  
[www.alsina.com.py](http://www.alsina.com.py)

**Brazil**  
[www.alsina.com](http://www.alsina.com)

**Mexico**  
[www.alsina.com](http://www.alsina.com)

**Spain**  
[www.alsina.es](http://www.alsina.es)

**Italy**  
[www.alsina.it](http://www.alsina.it)

**Portugal**  
[www.alsina.pt](http://www.alsina.pt)

**Romania**  
[www.alsina.ro](http://www.alsina.ro)

**Poland**  
[www.alsina.pl](http://www.alsina.pl)

**Morocco**  
[www.alsinacoffrages.com](http://www.alsinacoffrages.com)

**India**  
[www.alsina.in](http://www.alsina.in)

**China**  
[www.alsina.cn](http://www.alsina.cn)

**Australia**  
[www.alsina.com](http://www.alsina.com)



**Alsitec  
Engineering**



**Mecanoconcept  
Slab formwork**



**Post-shores and  
shoring systems**



**Column formwork**



**Alisply Wall Solutions**



**Climbing systems**



**Multiform system for  
civil works**



**Ports, mine tunnels  
and advance carriages**



**Accesses and safety**



**Accessories**