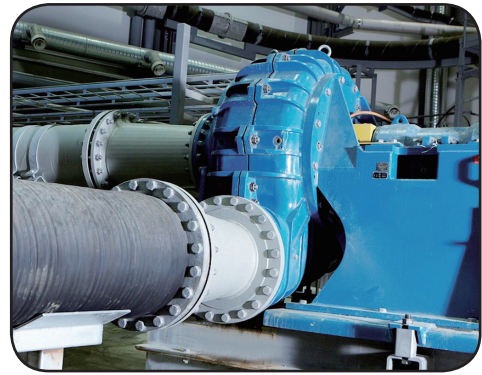


BULK MATERIAL SUCTION HOSE 150PSI



Construction:

Tube: Pure gum compound

Reinforcement: Multi ply synthetic fabric with steel wire helix

Cover: Black synthetic rubber, fabric impression, corrugated or smooth.

Application:

For suction, discharge or gravity flow of abrasives ,dry cement,sand,gravel etc from manufacturing, sandblast recovery, mineral processing, power plants.

Characteristic:

- High abrasion resistant.
- Weather and ozone resistant.
- Both smooth cover or corrugated cover available
- Corrugated cover make the hose more flexible

Temperature: -40°C to +82°C(-40°F to +180°F)

Item code	I.D		O.D	W.P		B.P		L	
	inch	mm	mm	bar	psi	bar	psi	m	ft
BMSH032	1 1/4"	31.8	46	10	150	30	300	61	200
BMSH038	1 1/2"	38	53	10	150	30	300	61	200
BMSH051	2"	50	69	10	150	30	300	61	200
BMSH064	2-1/2"	64	83	10	150	30	300	61	200
BMSH076	3"	76	98	10	150	30	300	61	200
BMSH089	3-1/2"	89	113	10	150	30	300	61	200
BMSH102	4"	102	126	10	150	30	300	61	200
BMSH127	5"	127	153	10	150	30	300	30.5	100
BMSH152	6"	152	180	10	150	30	300	30.5	100
BMSH203	8"	203	235	10	150	30	300	12	40
BMSH254	10"	254	287	10	150	30	300	12	40
BMSH304	12"	304.8	335	10	150	30	300	12	40