



1. The Wear Resistant Ceramic Patch Pipe and Fitting is made by compact the wear resistant ceramic patch onto the inner wall of the metal pipe and fitting by glue stick, welding fastener. It synthesizes the advantages of metal and ceramic in high hardness, good chemical inertia. It is with excellent wear resistance, corrosion resistance, hear resistance and anti mechanical shock.

It is applied on:

耐磨陶瓷贴片管道、管件，是一种在金属管道、管件内壁通过粘贴、紧固件焊接耐磨陶瓷贴片形成的复合管材，综合了耐磨陶瓷硬度高、化学惰性好和金属的优点，具有优异的耐磨、耐蚀、耐热和抗热冲击及抗机械冲击性能。应用于：

1) Pipe and Fitting used for the coal and ash conveying in the thermal power plant, the conveying of the ettle and the concentrate in the concentrating mill, the conveying of the slurry, sand and pulverized coal slurry.

要求高耐磨的管道管件：火力发电、热电厂煤和灰输送、煤粉输送管道，选矿厂尾矿输送和精矿输送管道，港口矿浆和泥沙输送管道，粉煤浆输送管道等。

2) Refine coal conveying pipe in the coal concentrating plant, and the desulfurization slurry conveying in the thermal power plant.

选煤厂精煤输送管道，要求高耐腐蚀性火力发电脱硫浆渣输送管道。

3) Melting aluminium conveying. 熔融铝液输送管道，管件。

4) Other situation required high resistance to wear, corrosion and heat.

其它要求高耐磨、高耐腐蚀、耐高温的各种管道、管件。

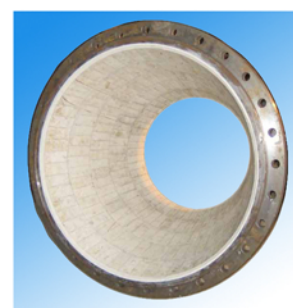
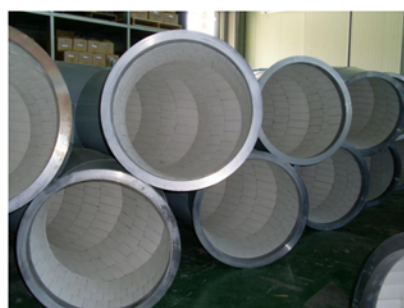
Materials of the ceramic patch 贴片陶瓷的材质	Al ₂ O ₃ 氧化铝	ZrO ₂ 氧化锆	Si ₃ N ₄ 氮化硅
--	------------------------------------	----------------------	------------------------------------

Products 分类	Pipe 管道		Pipe Fitting 管件			
Subdivision 细分	Without Flange 不带法兰	With Flange 带法兰	Elbow 弯头	Triplet 三通	Valve 阀门	Expansion Joint 膨胀节

Specification of the Patch Pip with Flange 带法兰的贴片陶瓷钢管 (mm)

Steel Pipe OD 钢管直径	50	80	100	125	150	175	200	250	300	350	400
Steel Pipe Wall Thickness 钢管壁厚	4									5	
Ceramic Thickness 陶瓷壁厚	20-22									20-25	
Flange OD 法兰外径	205	235	260	290	315	340	370	435	485	535	590
Flange Hole dia. 法兰孔中心	170	200	225	225	280	305	335	395	445	495	550
Weight 重量约 kg	13.5	21.5	25	28	32	38	42	50	60	72	81

Bending Radius 贴片陶瓷弯管弯曲半径 mm	500	1000	1500	2000	2500	3000
Angle 角度	90°		45°		30°	





Specification of the Patch Pip without Flange不带法兰的贴片陶瓷管规格 (mm)

Steel Pipe OD 钢管直径	200	220	250	275	300	325	350	380	400	450	475	500	600
Steel Pipe Wall Thickness 钢管壁厚	All in 8-10mm				Ceramic Thickness 陶瓷壁厚						All in 6mm		
Compact Pipe ID 复合管内径	178	198	228	253	278	303	328	358	378	428	453	478	578

2、Integral forming wear resistant ceramic pipe and fitting

整体成型耐磨陶瓷管道、管件

1) Moulding: iso-static press moulding.

成型方式：等静压成型



2) Integral forming wear resistant ceramic pipe and fitting are widely used in the conveying pipe of the abrasive granular materials and corrosive medium like sand, stone, ash, slag in the mine, power station, metallurgy, coal and chemical industries. It solved the problem that the ceramic patch fall off, so it is suitable for the special position which the ceramic patch can not work well.

整体成型耐磨陶瓷管道、管件广泛应用于矿山、电力、冶金、煤炭、化工等行业，作为输送砂石、灰粉、灰渣等磨削性颗粒材料和腐蚀性介质的管道中。它解决了特殊部位衬板贴片局部脱落的问题，特别适用于耐磨贴片不能满足工况要求的特殊部位。

3) Integral forming wear resistant ceramic pipe and fitting are suitable for the wear resistant liner and of the sand remover in the swirler of the papermaking and mining industries, and the high corrosion component in the textile industry.

整体成型耐磨陶瓷管道、管件适用于造纸、矿山旋流器的耐磨衬里和除沙嘴，以及纺织行业大高腐蚀部位。

Materials 材质	Al ₂ O ₃ 氧化铝	SiC 碳化硅	ZrO ₂ 氧化锆	Si ₃ N ₄ 氮化硅
--------------	------------------------------------	---------	----------------------	------------------------------------

Products 分类	Pipe 管道		Pipe Fitting 管件			
Subdivision 细分	Split Joint 拼接	Integral forming 整体	Straight Joint 直通	Seat Brick 座砖	Elbow 弯头	Triplet 三通

