

Image: Stratabound copper at the Paratoo Copper-Rare Earths Project in South Australia.
Image Credit: Core Group



**World class mineral
process engineering,
testwork and
technology solutions**

Need an effective metallurgical solution? Contact us today.

www.coreresources.com.au

Our Capabilities

WHAT WE CAN DO FOR YOU



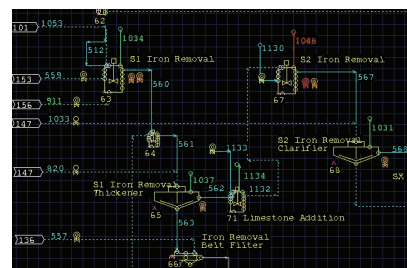
Metallurgical Testing

- » **Comminution** – Crushing, Milling up to several tonnes
- » **Beneficiation** – Flotation (incl. Jameson), Gravity, Screening, Heavy Media, Magnetic Separation
- » **Hydrometallurgy** – Cyanide, Acid/Alkali, Bacterial, Column, HPAL/POx leaching
- » **Metal Recovery** – Precipitation, Crystallisation, Solvent Extraction, Electrowinning



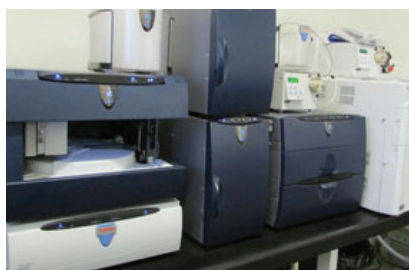
Metallurgical Pilot Plants

- » **Flotation Pilot Plant** – milling & flotation up to 400 kg/h
- » **Hydrometallurgical Pilot Plants** – 15 kg/day to 1 tonne/day fully integrated, incl. 19 L autoclave
- » **Solvent Extraction/Electrowinning** – full tankhouse size EW cells, 8 kA Rectifier
- » **Pilot Plant Design and Modelling**



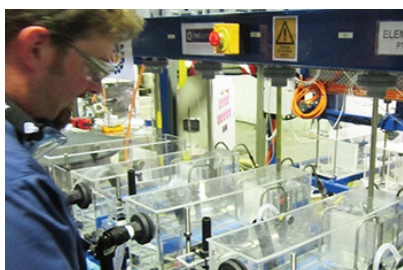
Process Engineering

- » **Flowsheet Development** for all mineral processes
- » **Process Modelling** using METSIM, HSC, Excel
- » **Techno-Economic Evaluations** of process options
- » **Process Optimisation**
- » **Development of Novel Processes**
- » **Study Management** through to DFS



Analytical Services

- » **NATA accredited** analytical laboratory on site
- » **Specialist Method Development**
- » **Sulphur Speciation** experts
- » **Mineralogy**
- » **On-Site Assay Lab Services**
- » **ICP-OES, AAS, Leco, HPLC, Full Wet Chemistry Capabilities**



Process Innovators

- » **Albion Process™** – metal recovery from refractory concentrates
- » **Toowong Process** – removing arsenic and antimony from concentrates
- » **Your process challenge** – our innovation solution



Metallurgy On Site

- » **Plant Audits**
- » **Plant Optimisation**
- » **Professional & Technical Staff Hire**
- » **Plant Commissioning**
- » **Site Based Trials**

Need an effective metallurgical solution? Contact us today.

Ph: +617 3262 6207 | W: coreresources.com.au | Postal Address: PO Box 127, Albion DC, QLD 4010 AUS